



# Full wwPDB X-ray Structure Validation Report ⓘ

Nov 22, 2023 – 12:26 PM JST

PDB ID : 7WNM  
Title : Structure of SARS-CoV-2 Gamma variant receptor-binding domain complexed with high affinity human ACE2 mutant (T27F,R273Q)  
Authors : Ma, R.Y.; Han, P.C.; Wang, Q.H.; Han, P.  
Deposited on : 2022-01-18  
Resolution : 2.70 Å(reported)

This is a Full wwPDB X-ray Structure Validation Report for a publicly released PDB entry.

We welcome your comments at [validation@mail.wwpdb.org](mailto:validation@mail.wwpdb.org)

A user guide is available at

<https://www.wwpdb.org/validation/2017/XrayValidationReportHelp>

with specific help available everywhere you see the ⓘ symbol.

The types of validation reports are described at

<http://www.wwpdb.org/validation/2017/FAQs#types>.

---

The following versions of software and data (see [references ⓘ](#)) were used in the production of this report:

MolProbity : 4.02b-467  
Mogul : 1.8.5 (274361), CSD as541be (2020)  
Xtrriage (Phenix) : 1.13  
EDS : 2.36  
buster-report : 1.1.7 (2018)  
Percentile statistics : 20191225.v01 (using entries in the PDB archive December 25th 2019)  
Refmac : 5.8.0158  
CCP4 : 7.0.044 (Gargrove)  
Ideal geometry (proteins) : Engh & Huber (2001)  
Ideal geometry (DNA, RNA) : Parkinson et al. (1996)  
Validation Pipeline (wwPDB-VP) : 2.36

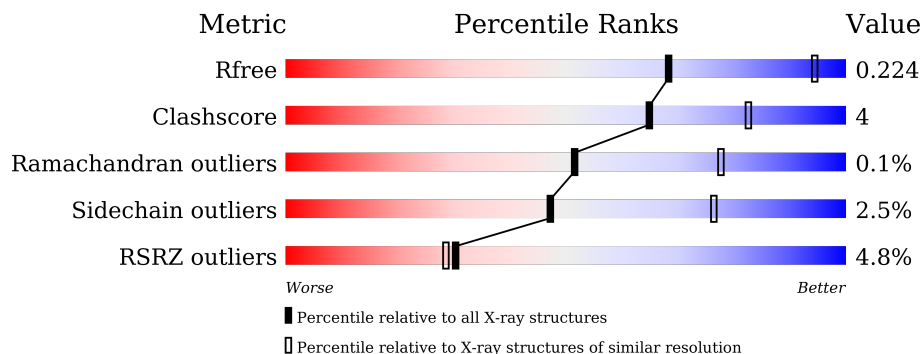
# 1 Overall quality at a glance

The following experimental techniques were used to determine the structure:

*X-RAY DIFFRACTION*

The reported resolution of this entry is 2.70 Å.

Percentile scores (ranging between 0-100) for global validation metrics of the entry are shown in the following graphic. The table shows the number of entries on which the scores are based.



Metric	Whole archive (#Entries)	Similar resolution (#Entries, resolution range(Å))
$R_{free}$	130704	2808 (2.70-2.70)
Clashscore	141614	3122 (2.70-2.70)
Ramachandran outliers	138981	3069 (2.70-2.70)
Sidechain outliers	138945	3069 (2.70-2.70)
RSRZ outliers	127900	2737 (2.70-2.70)

The table below summarises the geometric issues observed across the polymeric chains and their fit to the electron density. The red, orange, yellow and green segments of the lower bar indicate the fraction of residues that contain outliers for  $\geq 3$ , 2, 1 and 0 types of geometric quality criteria respectively. A grey segment represents the fraction of residues that are not modelled. The numeric value for each fraction is indicated below the corresponding segment, with a dot representing fractions  $\leq 5\%$ . The upper red bar (where present) indicates the fraction of residues that have poor fit to the electron density. The numeric value is given above the bar.

Mol	Chain	Length	Quality of chain
1	B	740	 4% 69% 11% 19%
2	A	244	 4% 71% 8% 20%

## 2 Entry composition [i](#)

There are 5 unique types of molecules in this entry. The entry contains 6521 atoms, of which 0 are hydrogens and 0 are deuteriums.

In the tables below, the ZeroOcc column contains the number of atoms modelled with zero occupancy, the AltConf column contains the number of residues with at least one atom in alternate conformation and the Trace column contains the number of residues modelled with at most 2 atoms.

- Molecule 1 is a protein called Angiotensin-converting enzyme 2.

Mol	Chain	Residues	Atoms					ZeroOcc	AltConf	Trace
			Total	C	N	O	S			
1	B	596	4864	3115	803	917	29	0	0	0

There are 2 discrepancies between the modelled and reference sequences:

Chain	Residue	Modelled	Actual	Comment	Reference
B	27	PHE	THR	engineered mutation	UNP Q9BYF1
B	273	GLN	ARG	engineered mutation	UNP Q9BYF1

- Molecule 2 is a protein called Spike protein S1.

Mol	Chain	Residues	Atoms					ZeroOcc	AltConf	Trace
			Total	C	N	O	S			
2	A	194	1538	989	255	286	8	0	0	0

There are 24 discrepancies between the modelled and reference sequences:

Chain	Residue	Modelled	Actual	Comment	Reference
A	304	MET	-	expression tag	UNP P0DTC2
A	305	PHE	-	expression tag	UNP P0DTC2
A	306	VAL	-	expression tag	UNP P0DTC2
A	307	PHE	-	expression tag	UNP P0DTC2
A	308	LEU	-	expression tag	UNP P0DTC2
A	309	VAL	-	expression tag	UNP P0DTC2
A	310	LEU	-	expression tag	UNP P0DTC2
A	311	LEU	-	expression tag	UNP P0DTC2
A	312	PRO	-	expression tag	UNP P0DTC2
A	313	LEU	-	expression tag	UNP P0DTC2
A	314	VAL	-	expression tag	UNP P0DTC2
A	315	SER	-	expression tag	UNP P0DTC2
A	316	SER	-	expression tag	UNP P0DTC2
A	317	GLN	-	expression tag	UNP P0DTC2

*Continued on next page...*

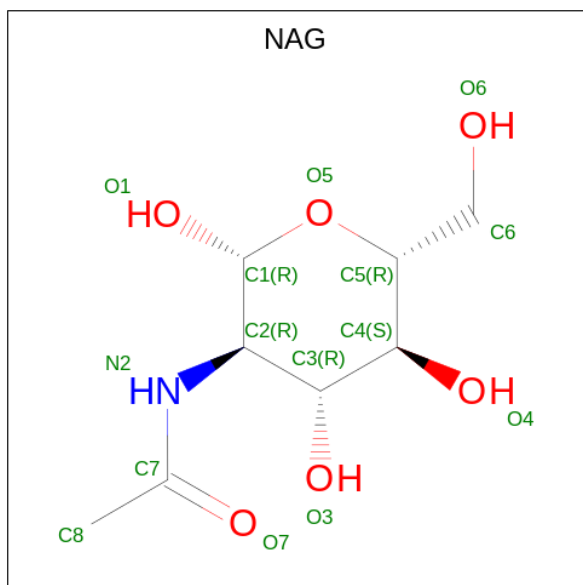
Continued from previous page...

Chain	Residue	Modelled	Actual	Comment	Reference
A	318	CYS	-	expression tag	UNP P0DTC2
A	417	THR	LYS	variant	UNP P0DTC2
A	484	LYS	GLU	variant	UNP P0DTC2
A	501	TYR	ASN	engineered mutation	UNP P0DTC2
A	542	HIS	-	expression tag	UNP P0DTC2
A	543	HIS	-	expression tag	UNP P0DTC2
A	544	HIS	-	expression tag	UNP P0DTC2
A	545	HIS	-	expression tag	UNP P0DTC2
A	546	HIS	-	expression tag	UNP P0DTC2
A	547	HIS	-	expression tag	UNP P0DTC2

- Molecule 3 is ZINC ION (three-letter code: ZN) (formula: Zn) (labeled as "Ligand of Interest" by depositor).

Mol	Chain	Residues	Atoms	ZeroOcc	AltConf
3	B	1	Total Zn 1 1	0	0

- Molecule 4 is 2-acetamido-2-deoxy-beta-D-glucopyranose (three-letter code: NAG) (formula: C<sub>8</sub>H<sub>15</sub>NO<sub>6</sub>) (labeled as "Ligand of Interest" by depositor).



Mol	Chain	Residues	Atoms	ZeroOcc	AltConf
4	A	1	Total C N O 14 8 1 5	0	0

- Molecule 5 is water.

<b>Mol</b>	<b>Chain</b>	<b>Residues</b>	<b>Atoms</b>		<b>ZeroOcc</b>	<b>AltConf</b>
5	B	77	Total 77	O 77	0	0
5	A	27	Total 27	O 27	0	0



## 4 Data and refinement statistics

Property	Value	Source
Space group	P 41 21 2	Depositor
Cell constants a, b, c, $\alpha$ , $\beta$ , $\gamma$	103.35Å 103.35Å 233.32Å 90.00° 90.00° 90.00°	Depositor
Resolution (Å)	17.57 – 2.70 38.68 – 2.70	Depositor EDS
% Data completeness (in resolution range)	99.9 (17.57-2.70) 94.5 (38.68-2.70)	Depositor EDS
$R_{merge}$	0.17	Depositor
$R_{sym}$	0.17	Depositor
$\langle I/\sigma(I) \rangle$ <sup>1</sup>	1.52 (at 2.69Å)	Xtrriage
Refinement program	PHENIX 1.19rc3_4028	Depositor
R, $R_{free}$	0.194 , 0.223 0.196 , 0.224	Depositor DCC
$R_{free}$ test set	2000 reflections (5.63%)	wwPDB-VP
Wilson B-factor (Å <sup>2</sup> )	35.3	Xtrriage
Anisotropy	0.406	Xtrriage
Bulk solvent $k_{sol}$ (e/Å <sup>3</sup> ), $B_{sol}$ (Å <sup>2</sup> )	0.34 , 38.6	EDS
L-test for twinning <sup>2</sup>	$\langle  L  \rangle = 0.48$ , $\langle L^2 \rangle = 0.32$	Xtrriage
Estimated twinning fraction	No twinning to report.	Xtrriage
$F_o, F_c$ correlation	0.93	EDS
Total number of atoms	6521	wwPDB-VP
Average B, all atoms (Å <sup>2</sup> )	43.0	wwPDB-VP

Xtrriage's analysis on translational NCS is as follows: *The largest off-origin peak in the Patterson function is 3.78% of the height of the origin peak. No significant pseudotranslation is detected.*

<sup>1</sup>Intensities estimated from amplitudes.

<sup>2</sup>Theoretical values of  $\langle |L| \rangle$ ,  $\langle L^2 \rangle$  for acentric reflections are 0.5, 0.333 respectively for untwinned datasets, and 0.375, 0.2 for perfectly twinned datasets.

## 5 Model quality [i](#)

### 5.1 Standard geometry [i](#)

Bond lengths and bond angles in the following residue types are not validated in this section: ZN, NAG

The Z score for a bond length (or angle) is the number of standard deviations the observed value is removed from the expected value. A bond length (or angle) with  $|Z| > 5$  is considered an outlier worth inspection. RMSZ is the root-mean-square of all Z scores of the bond lengths (or angles).

Mol	Chain	Bond lengths		Bond angles	
		RMSZ	# Z  >5	RMSZ	# Z  >5
1	B	0.26	0/5002	0.44	0/6796
2	A	0.27	0/1583	0.48	0/2156
All	All	0.26	0/6585	0.45	0/8952

There are no bond length outliers.

There are no bond angle outliers.

There are no chirality outliers.

There are no planarity outliers.

### 5.2 Too-close contacts [i](#)

In the following table, the Non-H and H(model) columns list the number of non-hydrogen atoms and hydrogen atoms in the chain respectively. The H(added) column lists the number of hydrogen atoms added and optimized by MolProbity. The Clashes column lists the number of clashes within the asymmetric unit, whereas Symm-Clashes lists symmetry-related clashes.

Mol	Chain	Non-H	H(model)	H(added)	Clashes	Symm-Clashes
1	B	4864	0	4636	41	0
2	A	1538	0	1456	11	0
3	B	1	0	0	0	0
4	A	14	0	13	0	0
5	A	27	0	0	0	0
5	B	77	0	0	0	0
All	All	6521	0	6105	51	0

The all-atom clashscore is defined as the number of clashes found per 1000 atoms (including hydrogen atoms). The all-atom clashscore for this structure is 4.

All (51) close contacts within the same asymmetric unit are listed below, sorted by their clash



magnitude.

Atom-1	Atom-2	Interatomic distance (Å)	Clash overlap (Å)
2:A:445:VAL:O	2:A:498:GLN:NE2	2.33	0.62
1:B:132:VAL:HG22	1:B:171:GLU:HG3	1.80	0.62
1:B:457:GLU:HG2	1:B:512:PHE:HB3	1.82	0.61
1:B:284:PRO:HD3	1:B:440:LEU:HD22	1.82	0.60
1:B:34:HIS:CE1	2:A:493:GLN:HB3	2.38	0.58
1:B:465:LYS:HD3	1:B:467:GLU:OE2	2.04	0.58
1:B:116:LEU:HD21	1:B:187:LYS:HD3	1.86	0.57
1:B:187:LYS:HE3	1:B:199:TYR:CZ	2.40	0.56
1:B:527:GLU:O	1:B:531:GLN:HG3	2.06	0.56
2:A:366:SER:HA	2:A:369:TYR:CZ	2.43	0.54
1:B:419:LYS:HE2	1:B:428:PHE:HB3	1.90	0.53
2:A:360:ASN:HA	2:A:523:THR:HB	1.91	0.52
1:B:524:GLN:HG2	1:B:583:PRO:HG2	1.92	0.51
1:B:367:ASP:O	1:B:371:THR:HG23	2.11	0.51
1:B:31:LYS:O	1:B:35:GLU:HG3	2.11	0.50
1:B:458:LYS:O	1:B:462:MET:HG3	2.13	0.49
2:A:366:SER:HA	2:A:369:TYR:CE1	2.48	0.49
1:B:470:LYS:HA	1:B:473:TRP:CD1	2.48	0.49
1:B:402:GLU:HB3	1:B:518:ARG:HD2	1.96	0.47
1:B:145:GLU:HB2	1:B:146:PRO:HD3	1.96	0.47
1:B:131:LYS:HD2	1:B:141:CYS:HB3	1.97	0.47
1:B:215:TYR:CE1	1:B:577:LYS:HD3	2.50	0.47
1:B:98:GLN:O	1:B:102:GLN:HG3	2.14	0.46
1:B:50:TYR:CE1	1:B:59:VAL:HG22	2.50	0.46
1:B:174:LYS:HE2	1:B:496:THR:OG1	2.15	0.46
2:A:447:GLY:HA2	2:A:498:GLN:HG2	1.99	0.45
1:B:110:GLU:O	1:B:114:LYS:HG3	2.17	0.45
1:B:293:VAL:O	1:B:297:MET:HG3	2.17	0.45
1:B:374:HIS:CE1	1:B:402:GLU:OE1	2.69	0.45
2:A:461:LEU:HD22	2:A:465:GLU:HB3	1.98	0.45
1:B:55:THR:O	1:B:59:VAL:HG23	2.17	0.44
1:B:31:LYS:HE2	1:B:35:GLU:OE2	2.18	0.44
2:A:390:LEU:HG	2:A:391:CYS:O	2.17	0.44
1:B:167:SER:O	1:B:171:GLU:HG2	2.18	0.43
1:B:332:MET:SD	1:B:336:PRO:HD3	2.59	0.43
1:B:398:GLU:HG3	1:B:514:ARG:HB3	2.00	0.43
2:A:394:ASN:OD1	2:A:516:GLU:HB2	2.18	0.43
1:B:177:ARG:HB2	1:B:498:CYS:HB2	2.01	0.42
1:B:144:LEU:HA	1:B:148:LEU:HB2	2.01	0.42
1:B:81:GLN:HG3	1:B:101:GLN:HG2	2.00	0.42
1:B:513:ILE:HD12	1:B:513:ILE:HA	1.88	0.42

*Continued on next page...*

Continued from previous page...

Atom-1	Atom-2	Interatomic distance (Å)	Clash overlap (Å)
1:B:233:ILE:HG13	1:B:581:VAL:HG21	2.01	0.42
1:B:297:MET:HE2	1:B:423:LEU:HD13	2.01	0.42
2:A:425:LEU:HD12	2:A:425:LEU:HA	1.94	0.42
1:B:523:PHE:CD2	1:B:584:LEU:HD12	2.55	0.42
1:B:465:LYS:HE3	1:B:465:LYS:HB2	1.71	0.41
1:B:294:THR:HG23	1:B:365:THR:HA	2.01	0.41
2:A:350:VAL:HG22	2:A:422:ASN:HB3	2.01	0.41
1:B:346:PRO:HB3	1:B:360:MET:HG3	2.03	0.41
1:B:477:TRP:CE3	1:B:500:PRO:HG3	2.55	0.41
1:B:424:LEU:HD23	1:B:424:LEU:HA	1.91	0.40

There are no symmetry-related clashes.

## 5.3 Torsion angles [i](#)

### 5.3.1 Protein backbone [i](#)

In the following table, the Percentiles column shows the percent Ramachandran outliers of the chain as a percentile score with respect to all X-ray entries followed by that with respect to entries of similar resolution.

The Analysed column shows the number of residues for which the backbone conformation was analysed, and the total number of residues.

Mol	Chain	Analysed	Favoured	Allowed	Outliers	Percentiles	
1	B	594/740 (80%)	584 (98%)	9 (2%)	1 (0%)	47	73
2	A	192/244 (79%)	179 (93%)	13 (7%)	0	100	100
All	All	786/984 (80%)	763 (97%)	22 (3%)	1 (0%)	51	78

All (1) Ramachandran outliers are listed below:

Mol	Chain	Res	Type
1	B	146	PRO

### 5.3.2 Protein sidechains [i](#)

In the following table, the Percentiles column shows the percent sidechain outliers of the chain as a percentile score with respect to all X-ray entries followed by that with respect to entries of similar resolution.

The Analysed column shows the number of residues for which the sidechain conformation was analysed, and the total number of residues.

Mol	Chain	Analysed	Rotameric	Outliers	Percentiles	
1	B	526/655 (80%)	513 (98%)	13 (2%)	47	76
2	A	167/217 (77%)	163 (98%)	4 (2%)	49	77
All	All	693/872 (80%)	676 (98%)	17 (2%)	47	76

All (17) residues with a non-rotameric sidechain are listed below:

Mol	Chain	Res	Type
1	B	86	GLN
1	B	106	SER
1	B	133	CYS
1	B	141	CYS
1	B	290	ASN
1	B	339	VAL
1	B	381	TYR
1	B	385	TYR
1	B	401	HIS
1	B	409	SER
1	B	441	LYS
1	B	511	SER
1	B	582	ARG
2	A	369	TYR
2	A	377	PHE
2	A	428	ASP
2	A	514	SER

Sometimes sidechains can be flipped to improve hydrogen bonding and reduce clashes. All (4) such sidechains are listed below:

Mol	Chain	Res	Type
1	B	137	ASN
1	B	394	ASN
1	B	531	GLN
2	A	498	GLN

### 5.3.3 RNA [i](#)

There are no RNA molecules in this entry.

## 5.4 Non-standard residues in protein, DNA, RNA chains [i](#)

There are no non-standard protein/DNA/RNA residues in this entry.

## 5.5 Carbohydrates [i](#)

There are no monosaccharides in this entry.

## 5.6 Ligand geometry [i](#)

Of 2 ligands modelled in this entry, 1 is monoatomic - leaving 1 for Mogul analysis.

In the following table, the Counts columns list the number of bonds (or angles) for which Mogul statistics could be retrieved, the number of bonds (or angles) that are observed in the model and the number of bonds (or angles) that are defined in the Chemical Component Dictionary. The Link column lists molecule types, if any, to which the group is linked. The Z score for a bond length (or angle) is the number of standard deviations the observed value is removed from the expected value. A bond length (or angle) with  $|Z| > 2$  is considered an outlier worth inspection. RMSZ is the root-mean-square of all Z scores of the bond lengths (or angles).

Mol	Type	Chain	Res	Link	Bond lengths			Bond angles		
					Counts	RMSZ	# Z  > 2	Counts	RMSZ	# Z  > 2
4	NAG	A	601	2	14,14,15	0.32	0	17,19,21	0.56	0

In the following table, the Chirals column lists the number of chiral outliers, the number of chiral centers analysed, the number of these observed in the model and the number defined in the Chemical Component Dictionary. Similar counts are reported in the Torsion and Rings columns. '-' means no outliers of that kind were identified.

Mol	Type	Chain	Res	Link	Chirals	Torsions	Rings
4	NAG	A	601	2	-	0/6/23/26	0/1/1/1

There are no bond length outliers.

There are no bond angle outliers.

There are no chirality outliers.

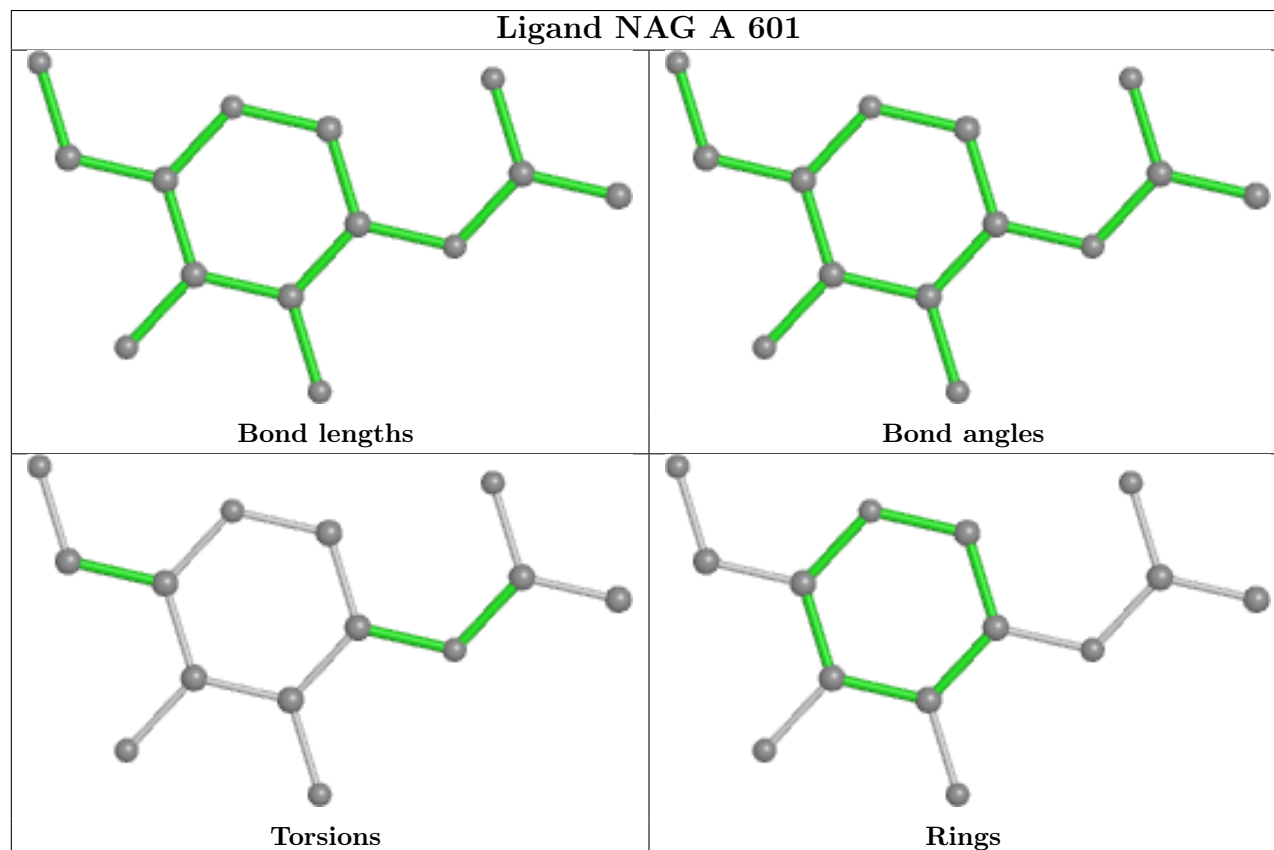
There are no torsion outliers.

There are no ring outliers.

No monomer is involved in short contacts.

The following is a two-dimensional graphical depiction of Mogul quality analysis of bond lengths, bond angles, torsion angles, and ring geometry for all instances of the Ligand of Interest. In addition, ligands with molecular weight > 250 and outliers as shown on the validation Tables will

also be included. For torsion angles, if less than 5% of the Mogul distribution of torsion angles is within 10 degrees of the torsion angle in question, then that torsion angle is considered an outlier. Any bond that is central to one or more torsion angles identified as an outlier by Mogul will be highlighted in the graph. For rings, the root-mean-square deviation (RMSD) between the ring in question and similar rings identified by Mogul is calculated over all ring torsion angles. If the average RMSD is greater than 60 degrees and the minimal RMSD between the ring in question and any Mogul-identified rings is also greater than 60 degrees, then that ring is considered an outlier. The outliers are highlighted in purple. The color gray indicates Mogul did not find sufficient equivalents in the CSD to analyse the geometry.



## 5.7 Other polymers [i](#)

There are no such residues in this entry.

## 5.8 Polymer linkage issues [i](#)

There are no chain breaks in this entry.

## 6 Fit of model and data

### 6.1 Protein, DNA and RNA chains

In the following table, the column labelled ‘#RSRZ > 2’ contains the number (and percentage) of RSRZ outliers, followed by percent RSRZ outliers for the chain as percentile scores relative to all X-ray entries and entries of similar resolution. The OWAB column contains the minimum, median, 95<sup>th</sup> percentile and maximum values of the occupancy-weighted average B-factor per residue. The column labelled ‘Q < 0.9’ lists the number of (and percentage) of residues with an average occupancy less than 0.9.

Mol	Chain	Analysed	<RSRZ>	#RSRZ>2	OWAB(Å <sup>2</sup> )	Q<0.9
1	B	596/740 (80%)	-0.08	29 (4%) 29 28	25, 40, 66, 103	0
2	A	194/244 (79%)	-0.05	9 (4%) 32 31	27, 41, 89, 100	0
All	All	790/984 (80%)	-0.07	38 (4%) 30 28	25, 40, 80, 103	0

All (38) RSRZ outliers are listed below:

Mol	Chain	Res	Type	RSRZ
1	B	339	VAL	5.9
1	B	138	PRO	5.4
2	A	372	ALA	5.0
2	A	371	SER	4.6
1	B	139	GLN	4.2
1	B	338	ASN	4.1
1	B	427	ASP	4.0
1	B	136	ASP	3.8
1	B	105	SER	3.7
1	B	134	ASN	3.7
1	B	429	GLN	3.6
1	B	428	PHE	3.4
2	A	334	ASN	3.3
2	A	370	ASN	3.0
1	B	140	GLU	3.0
2	A	335	LEU	3.0
2	A	367	VAL	3.0
1	B	89	GLN	2.9
1	B	60	GLN	2.9
1	B	133	CYS	2.9
2	A	523	THR	2.8
1	B	426	PRO	2.8
1	B	56	GLU	2.7
1	B	141	CYS	2.7

*Continued on next page...*

*Continued from previous page...*

Mol	Chain	Res	Type	RSRZ
1	B	344	CYS	2.6
1	B	425	SER	2.6
1	B	135	PRO	2.6
1	B	137	ASN	2.5
2	A	369	TYR	2.5
1	B	64	ASN	2.3
1	B	340	GLN	2.2
1	B	104	GLY	2.2
1	B	536	GLU	2.1
1	B	59	VAL	2.1
2	A	364	ASP	2.1
1	B	103	ASN	2.1
1	B	145	GLU	2.0
1	B	341	LYS	2.0

## 6.2 Non-standard residues in protein, DNA, RNA chains [i](#)

There are no non-standard protein/DNA/RNA residues in this entry.

## 6.3 Carbohydrates [i](#)

There are no monosaccharides in this entry.

## 6.4 Ligands [i](#)

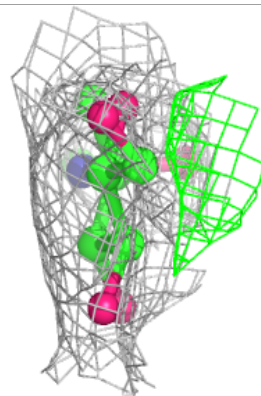
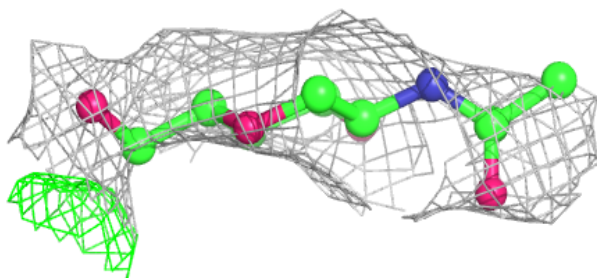
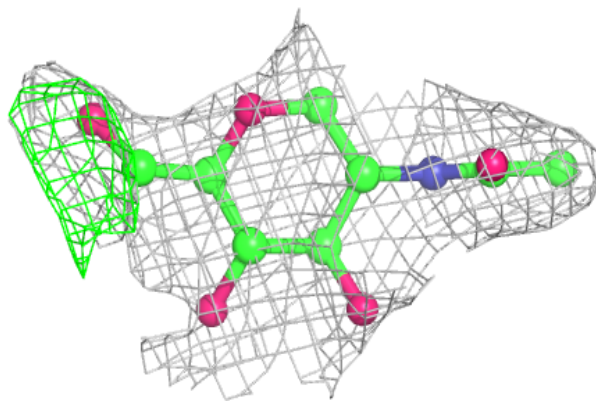
In the following table, the Atoms column lists the number of modelled atoms in the group and the number defined in the chemical component dictionary. The B-factors column lists the minimum, median, 95<sup>th</sup> percentile and maximum values of B factors of atoms in the group. The column labelled 'Q< 0.9' lists the number of atoms with occupancy less than 0.9.

Mol	Type	Chain	Res	Atoms	RSCC	RSR	B-factors(Å <sup>2</sup> )	Q<0.9
4	NAG	A	601	14/15	0.83	0.33	70,80,92,97	0
3	ZN	B	801	1/1	0.97	0.12	42,42,42,42	0

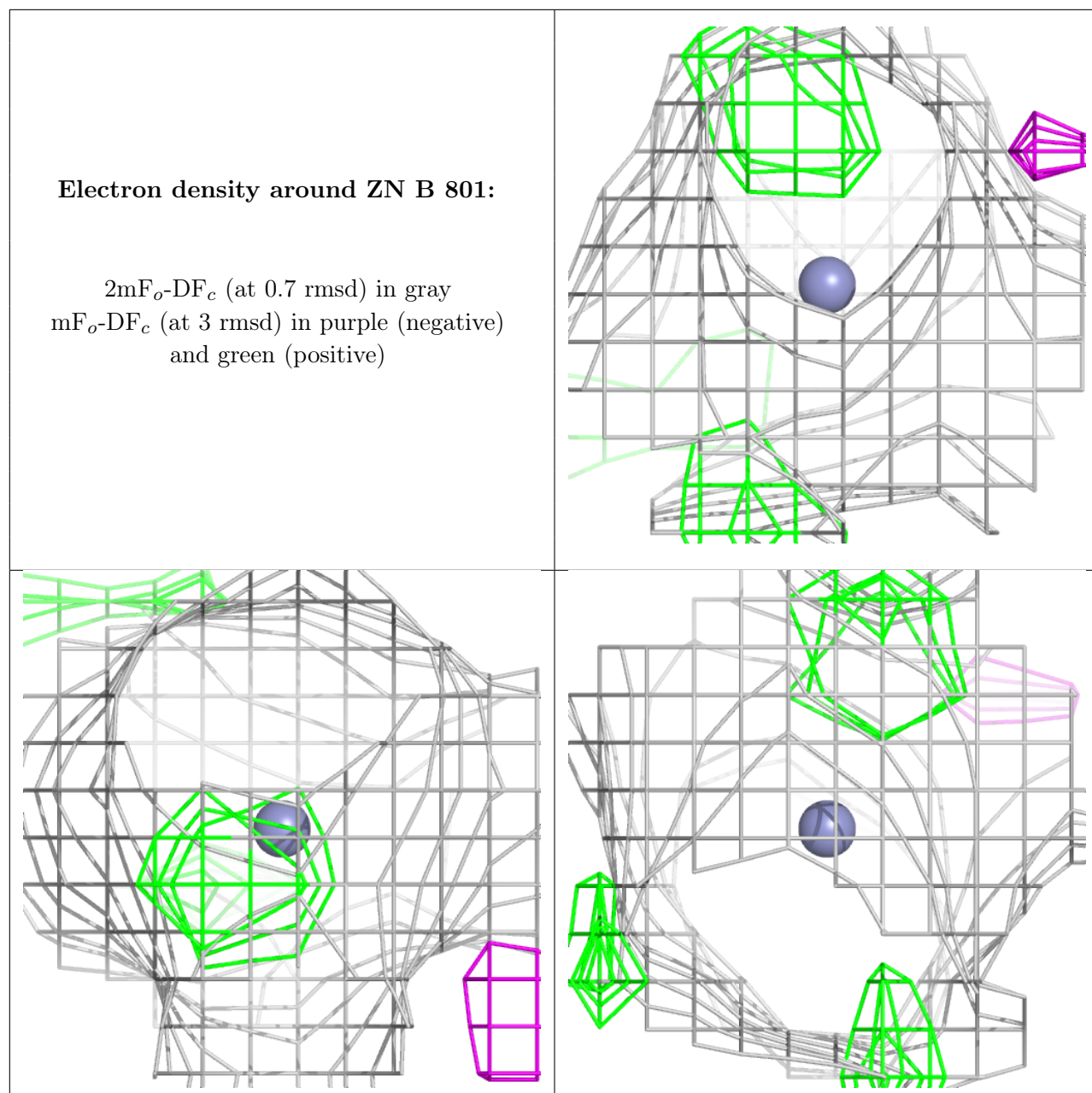
The following is a graphical depiction of the model fit to experimental electron density of all instances of the Ligand of Interest. In addition, ligands with molecular weight > 250 and outliers as shown on the geometry validation Tables will also be included. Each fit is shown from different orientation to approximate a three-dimensional view.

**Electron density around NAG A 601:**

$2mF_o-DF_c$  (at 0.7 rnsd) in gray  
 $mF_o-DF_c$  (at 3 rnsd) in purple (negative)  
and green (positive)







## 6.5 Other polymers ⓘ

There are no such residues in this entry.