



Full wwPDB EM Validation Report ⓘ

Feb 26, 2024 – 06:25 AM EST

PDB ID : 6WUA
EMDB ID : EMD-21908
Title : 30S subunit (head) of 70S Ribosome *Enterococcus faecalis* MultiBody refinement
Authors : Jogl, G.; Khayat, R.
Deposited on : 2020-05-04
Resolution : 3.20 Å (reported)
Based on initial models : 5LI0, 4YBB

This is a Full wwPDB EM Validation Report for a publicly released PDB entry.

We welcome your comments at validation@mail.wwpdb.org

A user guide is available at

<https://www.wwpdb.org/validation/2017/EMValidationReportHelp>

with specific help available everywhere you see the ⓘ symbol.

The types of validation reports are described at

<http://www.wwpdb.org/validation/2017/FAQs#types>.

The following versions of software and data (see [references ⓘ](#)) were used in the production of this report:

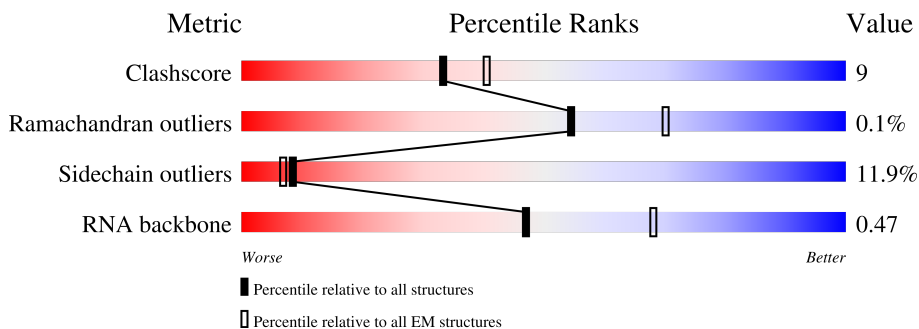
EMDB validation analysis : 0.0.1.dev70
MolProbity : 4.02b-467
Percentile statistics : 20191225.v01 (using entries in the PDB archive December 25th 2019)
MapQ : 1.9.13
Ideal geometry (proteins) : Engh & Huber (2001)
Ideal geometry (DNA, RNA) : Parkinson et al. (1996)
Validation Pipeline (wwPDB-VP) : 2.36

1 Overall quality at a glance i

The following experimental techniques were used to determine the structure:
ELECTRON MICROSCOPY

The reported resolution of this entry is 3.20 Å.

Percentile scores (ranging between 0-100) for global validation metrics of the entry are shown in the following graphic. The table shows the number of entries on which the scores are based.



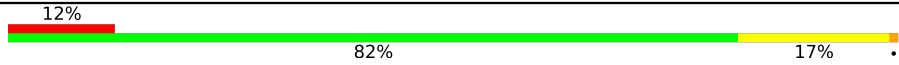
Metric	Whole archive (#Entries)	EM structures (#Entries)
Clashscore	158937	4297
Ramachandran outliers	154571	4023
Sidechain outliers	154315	3826
RNA backbone	4643	859

The table below summarises the geometric issues observed across the polymeric chains and their fit to the map. The red, orange, yellow and green segments of the bar indicate the fraction of residues that contain outliers for ≥ 3 , 2, 1 and 0 types of geometric quality criteria respectively. A grey segment represents the fraction of residues that are not modelled. The numeric value for each fraction is indicated below the corresponding segment, with a dot representing fractions $\leq 5\%$. The upper red bar (where present) indicates the fraction of residues that have poor fit to the EM map (all-atom inclusion $< 40\%$). The numeric value is given above the bar.

Mol	Chain	Length	Quality of chain
1	a	1548	
2	c	204	
3	g	154	
4	i	128	
5	j	99	
6	m	112	
7	n	60	

Continued on next page...

Continued from previous page...

Mol	Chain	Length	Quality of chain
8	s	78	 <p>A horizontal bar chart representing the quality of chain. The bar is divided into three segments: a red segment on the left labeled '12%', a large green segment in the middle labeled '82%', and a yellow segment on the right labeled '17%'. A small black dot is visible at the far right end of the bar.</p>

2 Entry composition [i](#)

There are 9 unique types of molecules in this entry. The entry contains 15195 atoms, of which 0 are hydrogens and 0 are deuteriums.

In the tables below, the AltConf column contains the number of residues with at least one atom in alternate conformation and the Trace column contains the number of residues modelled with at most 2 atoms.

- Molecule 1 is a RNA chain called 16S rRNA.

Mol	Chain	Residues	Atoms					AltConf	Trace
			Total	C	N	O	P		
1	a	402	8569	3828	1533	2806	402	0	0

- Molecule 2 is a protein called 30S ribosomal protein S3.

Mol	Chain	Residues	Atoms					AltConf	Trace
			Total	C	N	O	S		
2	c	204	1610	1012	303	292	3	0	0

- Molecule 3 is a protein called 30S ribosomal protein S7.

Mol	Chain	Residues	Atoms					AltConf	Trace
			Total	C	N	O	S		
3	g	154	1229	765	236	222	6	0	0

- Molecule 4 is a protein called 30S ribosomal protein S9.

Mol	Chain	Residues	Atoms					AltConf	Trace
			Total	C	N	O	S		
4	i	128	990	615	197	177	1	0	0

- Molecule 5 is a protein called 30S ribosomal protein S10.

Mol	Chain	Residues	Atoms					AltConf	Trace
			Total	C	N	O	S		
5	j	99	800	504	147	147	2	0	0

- Molecule 6 is a protein called 30S ribosomal protein S13.

Mol	Chain	Residues	Atoms					AltConf	Trace
			Total	C	N	O	S		
6	m	110	870	531	178	160	1	0	0

- Molecule 7 is a protein called 30S ribosomal protein S14 type Z.

Mol	Chain	Residues	Atoms					AltConf	Trace
			Total	C	N	O	S		
7	n	60	492	310	100	77	5	0	0

- Molecule 8 is a protein called 30S ribosomal protein S19.

Mol	Chain	Residues	Atoms					AltConf	Trace
			Total	C	N	O	S		
8	s	78	634	410	113	109	2	0	0

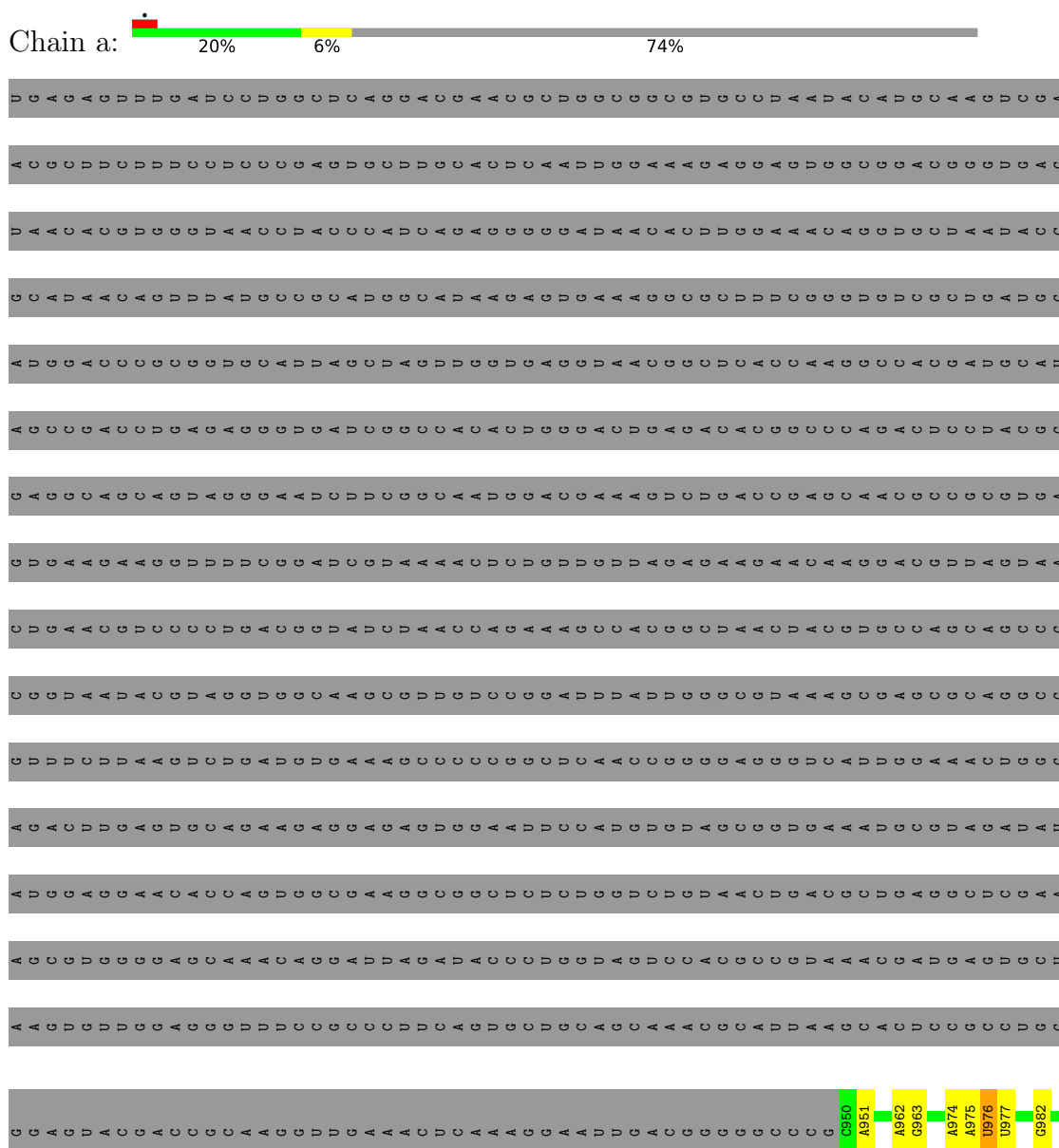
- Molecule 9 is ZINC ION (three-letter code: ZN) (formula: Zn) (labeled as "Ligand of Interest" by depositor).

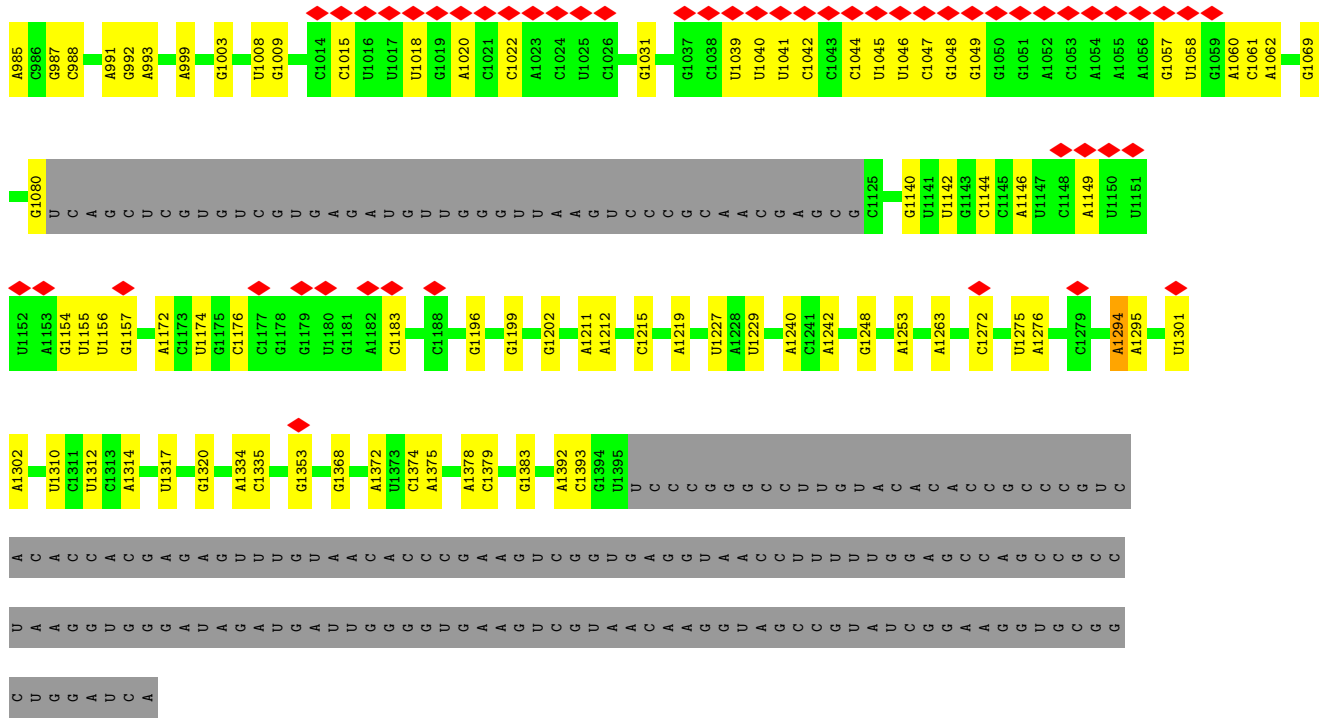
Mol	Chain	Residues	Atoms		AltConf
			Total	Zn	
9	n	1	1	1	0

3 Residue-property plots

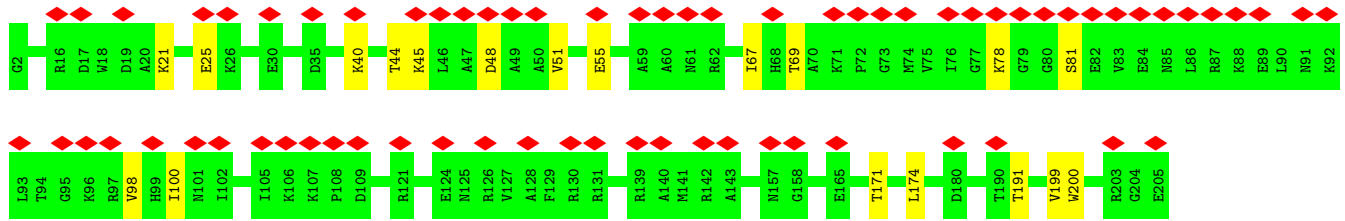
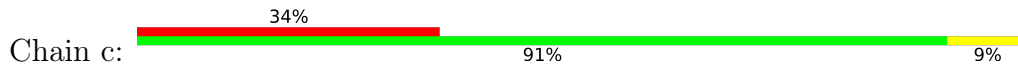
These plots are drawn for all protein, RNA, DNA and oligosaccharide chains in the entry. The first graphic for a chain summarises the proportions of the various outlier classes displayed in the second graphic. The second graphic shows the sequence view annotated by issues in geometry and atom inclusion in map density. Residues are color-coded according to the number of geometric quality criteria for which they contain at least one outlier: green = 0, yellow = 1, orange = 2 and red = 3 or more. A red diamond above a residue indicates a poor fit to the EM map for this residue (all-atom inclusion < 40%). Stretches of 2 or more consecutive residues without any outlier are shown as a green connector. Residues present in the sample, but not in the model, are shown in grey.

- Molecule 1: 16S rRNA

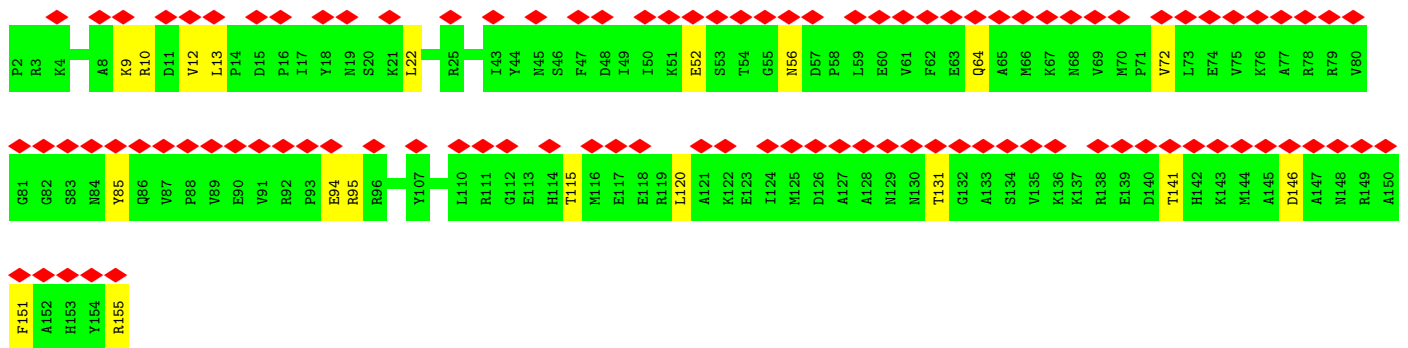
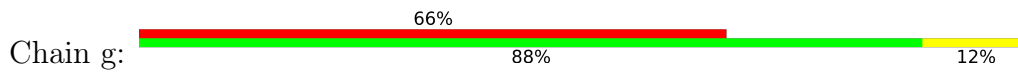




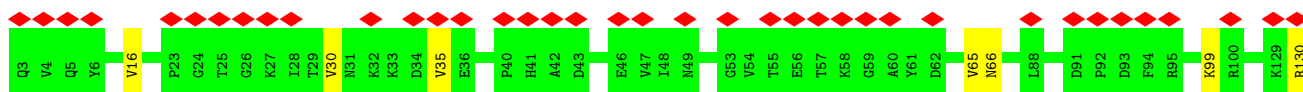
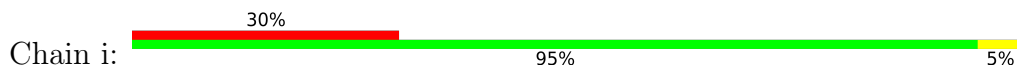
• Molecule 2: 30S ribosomal protein S3



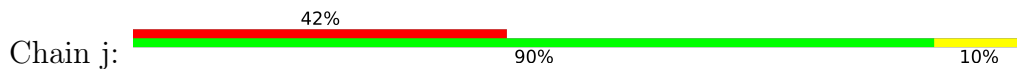
• Molecule 3: 30S ribosomal protein S7



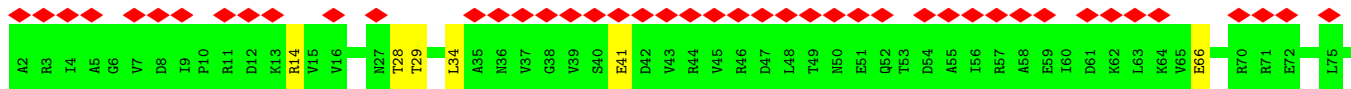
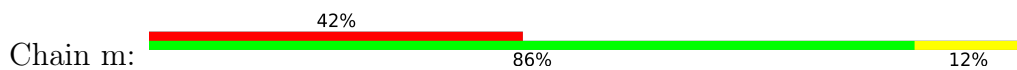
• Molecule 4: 30S ribosomal protein S9



• Molecule 5: 30S ribosomal protein S10



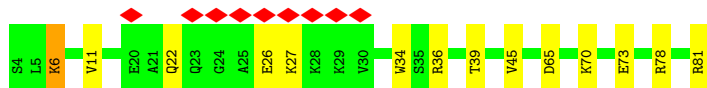
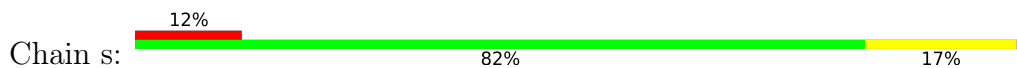
• Molecule 6: 30S ribosomal protein S13



• Molecule 7: 30S ribosomal protein S14 type Z



• Molecule 8: 30S ribosomal protein S19



4 Experimental information

Property	Value	Source
EM reconstruction method	SINGLE PARTICLE	Depositor
Imposed symmetry	POINT, C1	Depositor
Number of particles used	335675	Depositor
Resolution determination method	FSC 0.143 CUT-OFF	Depositor
CTF correction method	PHASE FLIPPING AND AMPLITUDE CORRECTION	Depositor
Microscope	FEI TITAN KRIOS	Depositor
Voltage (kV)	300	Depositor
Electron dose ($e^-/\text{\AA}^2$)	25	Depositor
Minimum defocus (nm)	Not provided	
Maximum defocus (nm)	Not provided	
Magnification	Not provided	
Image detector	GATAN K2 QUANTUM (4k x 4k)	Depositor
Maximum map value	0.117	Depositor
Minimum map value	-0.040	Depositor
Average map value	-0.001	Depositor
Map value standard deviation	0.003	Depositor
Recommended contour level	0.035	Depositor
Map size (Å)	482.68, 482.68, 482.68	wwPDB
Map dimensions	440, 440, 440	wwPDB
Map angles (°)	90.0, 90.0, 90.0	wwPDB
Pixel spacing (Å)	1.097, 1.097, 1.097	Depositor

5 Model quality [i](#)

5.1 Standard geometry [i](#)

Bond lengths and bond angles in the following residue types are not validated in this section:
ZN

The Z score for a bond length (or angle) is the number of standard deviations the observed value is removed from the expected value. A bond length (or angle) with $|Z| > 5$ is considered an outlier worth inspection. RMSZ is the root-mean-square of all Z scores of the bond lengths (or angles).

Mol	Chain	Bond lengths		Bond angles	
		RMSZ	# Z >5	RMSZ	# Z >5
1	a	0.76	0/9581	0.97	7/14928 (0.0%)
2	c	0.36	0/1635	0.49	0/2197
3	g	0.33	0/1249	0.47	0/1682
4	i	0.41	0/1003	0.51	0/1343
5	j	0.36	0/812	0.57	0/1093
6	m	0.36	0/875	0.56	0/1173
7	n	0.42	0/504	0.49	0/669
8	s	0.45	0/650	0.53	0/872
All	All	0.63	0/16309	0.83	7/23957 (0.0%)

Chiral center outliers are detected by calculating the chiral volume of a chiral center and verifying if the center is modelled as a planar moiety or with the opposite hand. A planarity outlier is detected by checking planarity of atoms in a peptide group, atoms in a mainchain group or atoms of a sidechain that are expected to be planar.

Mol	Chain	#Chirality outliers	#Planarity outliers
8	s	0	1

There are no bond length outliers.

All (7) bond angle outliers are listed below:

Mol	Chain	Res	Type	Atoms	Z	Observed(°)	Ideal(°)
1	a	1176	C	C2-N1-C1'	6.67	126.13	118.80
1	a	1294	A	N7-C8-N9	6.00	116.80	113.80
1	a	976	U	C5-C6-N1	-5.80	119.80	122.70
1	a	976	U	N1-C2-N3	5.72	118.33	114.90
1	a	1294	A	C8-N9-C4	-5.57	103.57	105.80
1	a	1375	A	N7-C8-N9	5.40	116.50	113.80
1	a	1176	C	C6-N1-C1'	-5.32	114.42	120.80

There are no chirality outliers.

All (1) planarity outliers are listed below:

Mol	Chain	Res	Type	Group
8	s	34	TRP	Peptide

5.2 Too-close contacts [i](#)

In the following table, the Non-H and H(model) columns list the number of non-hydrogen atoms and hydrogen atoms in the chain respectively. The H(added) column lists the number of hydrogen atoms added and optimized by MolProbity. The Clashes column lists the number of clashes within the asymmetric unit, whereas Symm-Clashes lists symmetry-related clashes.

Mol	Chain	Non-H	H(model)	H(added)	Clashes	Symm-Clashes
1	a	8569	0	4331	0	0
2	c	1610	0	1653	0	0
3	g	1229	0	1259	0	0
4	i	990	0	1035	0	0
5	j	800	0	846	0	0
6	m	870	0	918	0	0
7	n	492	0	509	0	0
8	s	634	0	649	0	0
9	n	1	0	0	0	0
All	All	15195	0	11200	0	0

The all-atom clashscore is defined as the number of clashes found per 1000 atoms (including hydrogen atoms). The all-atom clashscore for this structure is 9.

There are no clashes within the asymmetric unit.

There are no symmetry-related clashes.

5.3 Torsion angles [i](#)

5.3.1 Protein backbone [i](#)

In the following table, the Percentiles column shows the percent Ramachandran outliers of the chain as a percentile score with respect to all PDB entries followed by that with respect to all EM entries.

The Analysed column shows the number of residues for which the backbone conformation was analysed, and the total number of residues.

Mol	Chain	Analysed	Favoured	Allowed	Outliers	Percentiles	
2	c	202/204 (99%)	174 (86%)	28 (14%)	0	100	100
3	g	152/154 (99%)	138 (91%)	14 (9%)	0	100	100
4	i	126/128 (98%)	105 (83%)	21 (17%)	0	100	100
5	j	97/99 (98%)	79 (81%)	18 (19%)	0	100	100
6	m	108/112 (96%)	85 (79%)	23 (21%)	0	100	100
7	n	58/60 (97%)	49 (84%)	9 (16%)	0	100	100
8	s	76/78 (97%)	62 (82%)	13 (17%)	1 (1%)	12	47
All	All	819/835 (98%)	692 (84%)	126 (15%)	1 (0%)	54	83

All (1) Ramachandran outliers are listed below:

Mol	Chain	Res	Type
8	s	6	LYS

5.3.2 Protein sidechains [i](#)

In the following table, the Percentiles column shows the percent sidechain outliers of the chain as a percentile score with respect to all PDB entries followed by that with respect to all EM entries.

The Analysed column shows the number of residues for which the sidechain conformation was analysed, and the total number of residues.

Mol	Chain	Analysed	Rotameric	Outliers	Percentiles	
2	c	162/162 (100%)	143 (88%)	19 (12%)	5	23
3	g	131/131 (100%)	112 (86%)	19 (14%)	3	15
4	i	101/101 (100%)	94 (93%)	7 (7%)	15	49
5	j	90/90 (100%)	80 (89%)	10 (11%)	6	25
6	m	93/95 (98%)	79 (85%)	14 (15%)	3	14
7	n	51/51 (100%)	50 (98%)	1 (2%)	55	80
8	s	68/68 (100%)	55 (81%)	13 (19%)	1	8
All	All	696/698 (100%)	613 (88%)	83 (12%)	8	22

All (83) residues with a non-rotameric sidechain are listed below:

Mol	Chain	Res	Type
2	c	21	LYS

Continued on next page...

Continued from previous page...

Mol	Chain	Res	Type
2	c	25	GLU
2	c	40	LYS
2	c	44	THR
2	c	45	LYS
2	c	48	ASP
2	c	51	VAL
2	c	55	GLU
2	c	67	ILE
2	c	69	THR
2	c	78	LYS
2	c	81	SER
2	c	98	VAL
2	c	100	ILE
2	c	171	THR
2	c	174	LEU
2	c	191	THR
2	c	199	VAL
2	c	200	TRP
3	g	9	LYS
3	g	10	ARG
3	g	12	VAL
3	g	13	LEU
3	g	22	LEU
3	g	52	GLU
3	g	56	ASN
3	g	64	GLN
3	g	72	VAL
3	g	85	TYR
3	g	94	GLU
3	g	95	ARG
3	g	115	THR
3	g	120	LEU
3	g	131	THR
3	g	141	THR
3	g	146	ASP
3	g	151	PHE
3	g	155	ARG
4	i	16	VAL
4	i	30	VAL
4	i	35	VAL
4	i	65	VAL
4	i	66	ASN

Continued on next page...

Continued from previous page...

Mol	Chain	Res	Type
4	i	99	LYS
4	i	130	ARG
5	j	4	GLN
5	j	18	LEU
5	j	25	ILE
5	j	32	THR
5	j	51	VAL
5	j	63	GLU
5	j	72	ARG
5	j	85	ASP
5	j	87	LEU
5	j	91	ASP
6	m	14	ARG
6	m	28	THR
6	m	29	THR
6	m	34	LEU
6	m	41	GLU
6	m	66	GLU
6	m	80	LEU
6	m	83	ILE
6	m	91	HIS
6	m	98	ARG
6	m	100	GLN
6	m	102	THR
6	m	103	LYS
6	m	109	ARG
7	n	17	SER
8	s	6	LYS
8	s	11	VAL
8	s	22	GLN
8	s	26	GLU
8	s	27	LYS
8	s	36	ARG
8	s	39	THR
8	s	45	VAL
8	s	65	ASP
8	s	70	LYS
8	s	73	GLU
8	s	78	ARG
8	s	81	ARG

Sometimes sidechains can be flipped to improve hydrogen bonding and reduce clashes. All (11) such sidechains are listed below:

Mol	Chain	Res	Type
3	g	28	ASN
3	g	64	GLN
3	g	86	GLN
3	g	106	ASN
4	i	66	ASN
4	i	68	ASN
4	i	81	HIS
6	m	105	ASN
8	s	22	GLN
8	s	57	HIS
8	s	63	GLN

5.3.3 RNA [i](#)

Mol	Chain	Analysed	Backbone Outliers	Pucker Outliers
1	a	400/1548 (25%)	89 (22%)	0

All (89) RNA backbone outliers are listed below:

Mol	Chain	Res	Type
1	a	951	A
1	a	962	A
1	a	963	G
1	a	974	A
1	a	975	A
1	a	976	U
1	a	977	U
1	a	982	G
1	a	985	A
1	a	987	G
1	a	988	C
1	a	991	A
1	a	992	G
1	a	993	A
1	a	999	A
1	a	1003	G
1	a	1008	U
1	a	1009	G
1	a	1015	C
1	a	1018	U
1	a	1020	A
1	a	1022	C

Continued on next page...

Continued from previous page...

Mol	Chain	Res	Type
1	a	1031	G
1	a	1039	U
1	a	1040	U
1	a	1041	U
1	a	1042	C
1	a	1044	C
1	a	1045	U
1	a	1046	U
1	a	1047	C
1	a	1048	G
1	a	1049	G
1	a	1057	G
1	a	1058	U
1	a	1060	A
1	a	1061	C
1	a	1062	A
1	a	1069	G
1	a	1080	G
1	a	1140	G
1	a	1142	U
1	a	1144	C
1	a	1146	A
1	a	1149	A
1	a	1154	G
1	a	1155	U
1	a	1156	U
1	a	1157	G
1	a	1172	A
1	a	1174	U
1	a	1183	C
1	a	1196	G
1	a	1199	G
1	a	1202	G
1	a	1211	A
1	a	1212	A
1	a	1215	C
1	a	1219	A
1	a	1227	U
1	a	1229	U
1	a	1240	A
1	a	1242	A
1	a	1248	G

Continued on next page...

Continued from previous page...

Mol	Chain	Res	Type
1	a	1253	A
1	a	1263	A
1	a	1272	C
1	a	1275	U
1	a	1276	A
1	a	1294	A
1	a	1295	A
1	a	1301	U
1	a	1302	A
1	a	1310	U
1	a	1312	U
1	a	1314	A
1	a	1317	U
1	a	1320	G
1	a	1334	A
1	a	1335	C
1	a	1353	G
1	a	1368	G
1	a	1372	A
1	a	1374	C
1	a	1378	A
1	a	1379	C
1	a	1383	G
1	a	1392	A
1	a	1393	C

There are no RNA pucker outliers to report.

5.4 Non-standard residues in protein, DNA, RNA chains [i](#)

There are no non-standard protein/DNA/RNA residues in this entry.

5.5 Carbohydrates [i](#)

There are no monosaccharides in this entry.

5.6 Ligand geometry [i](#)

Of 1 ligands modelled in this entry, 1 is monoatomic - leaving 0 for Mogul analysis.

There are no bond length outliers.

There are no bond angle outliers.

There are no chirality outliers.

There are no torsion outliers.

There are no ring outliers.

No monomer is involved in short contacts.

5.7 Other polymers

There are no such residues in this entry.

5.8 Polymer linkage issues

There are no chain breaks in this entry.

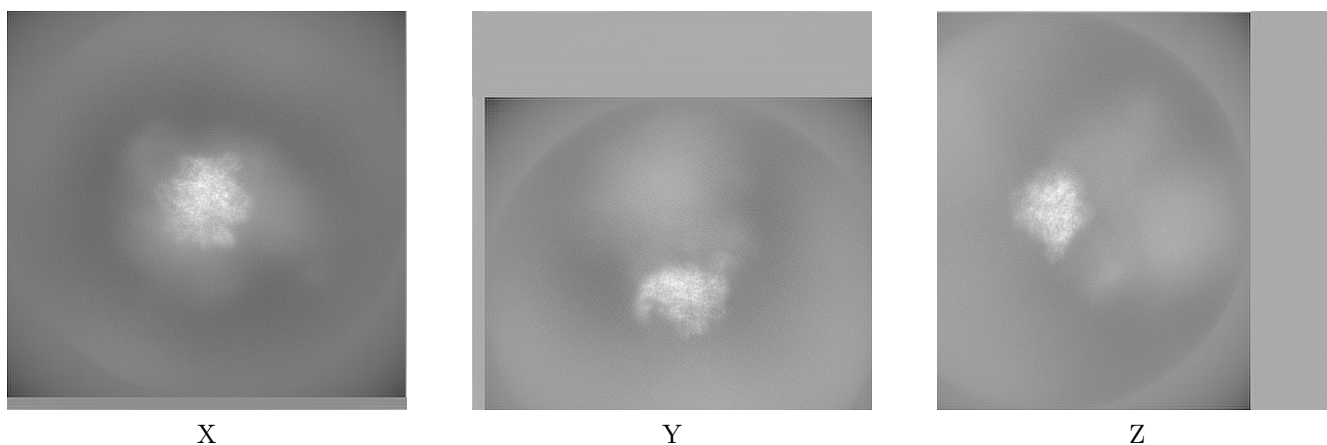
6 Map visualisation [i](#)

This section contains visualisations of the EMDB entry EMD-21908. These allow visual inspection of the internal detail of the map and identification of artifacts.

No raw map or half-maps were deposited for this entry and therefore no images, graphs, etc. pertaining to the raw map can be shown.

6.1 Orthogonal projections [i](#)

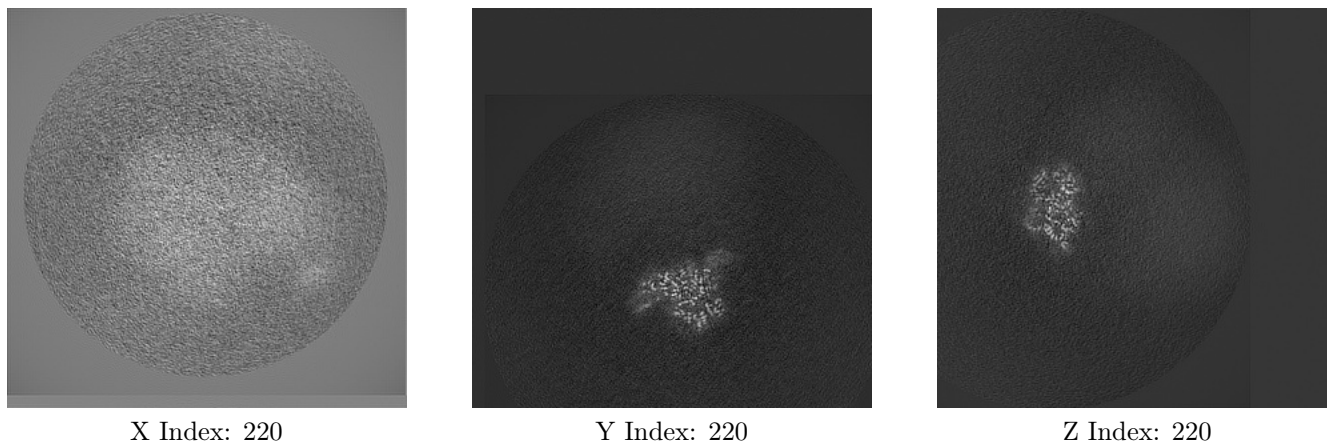
6.1.1 Primary map



The images above show the map projected in three orthogonal directions.

6.2 Central slices [i](#)

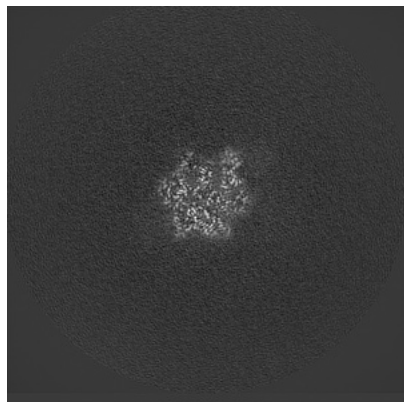
6.2.1 Primary map



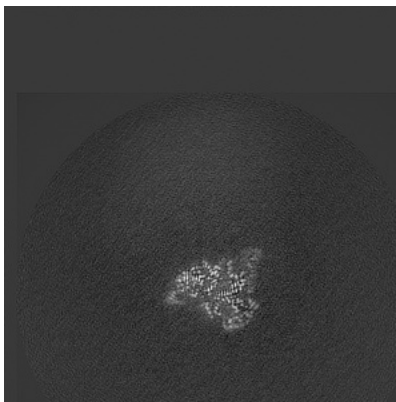
The images above show central slices of the map in three orthogonal directions.

6.3 Largest variance slices [i](#)

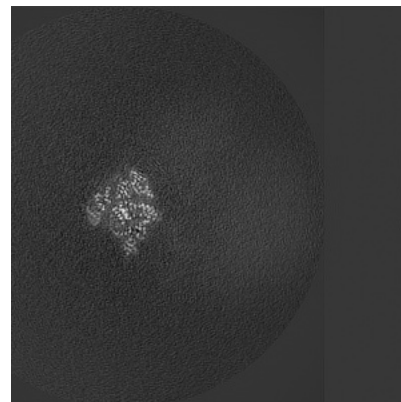
6.3.1 Primary map



X Index: 136



Y Index: 213

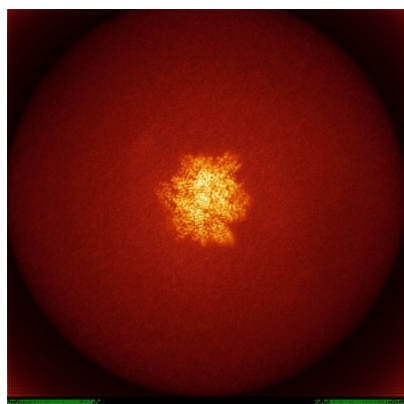


Z Index: 246

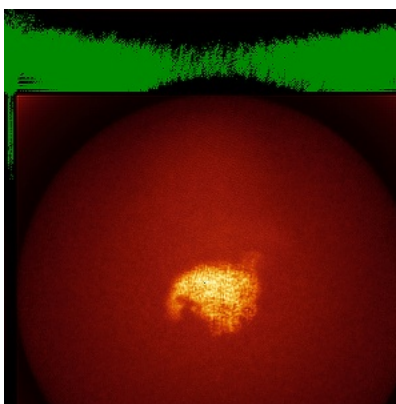
The images above show the largest variance slices of the map in three orthogonal directions.

6.4 Orthogonal standard-deviation projections (False-color) [i](#)

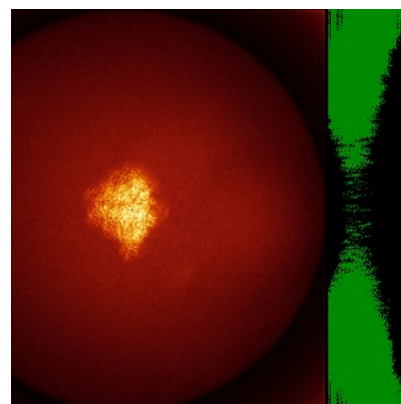
6.4.1 Primary map



X



Y



Z

The images above show the map standard deviation projections with false color in three orthogonal directions. Minimum values are shown in green, max in blue, and dark to light orange shades represent small to large values respectively.

6.5 Orthogonal surface views [i](#)

6.5.1 Primary map



The images above show the 3D surface view of the map at the recommended contour level 0.035. These images, in conjunction with the slice images, may facilitate assessment of whether an appropriate contour level has been provided.

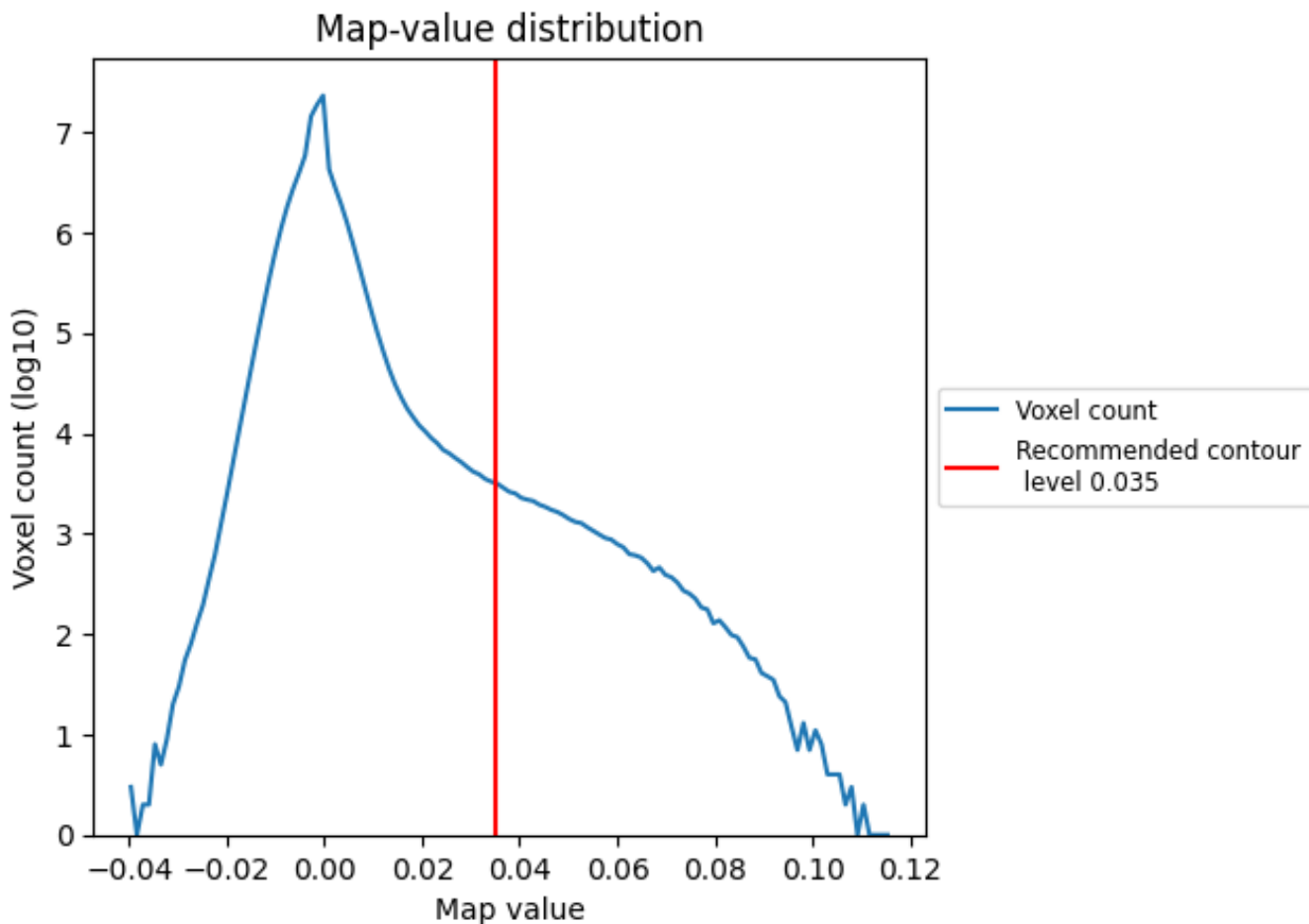
6.6 Mask visualisation [i](#)

This section was not generated. No masks/segmentation were deposited.

7 Map analysis [i](#)

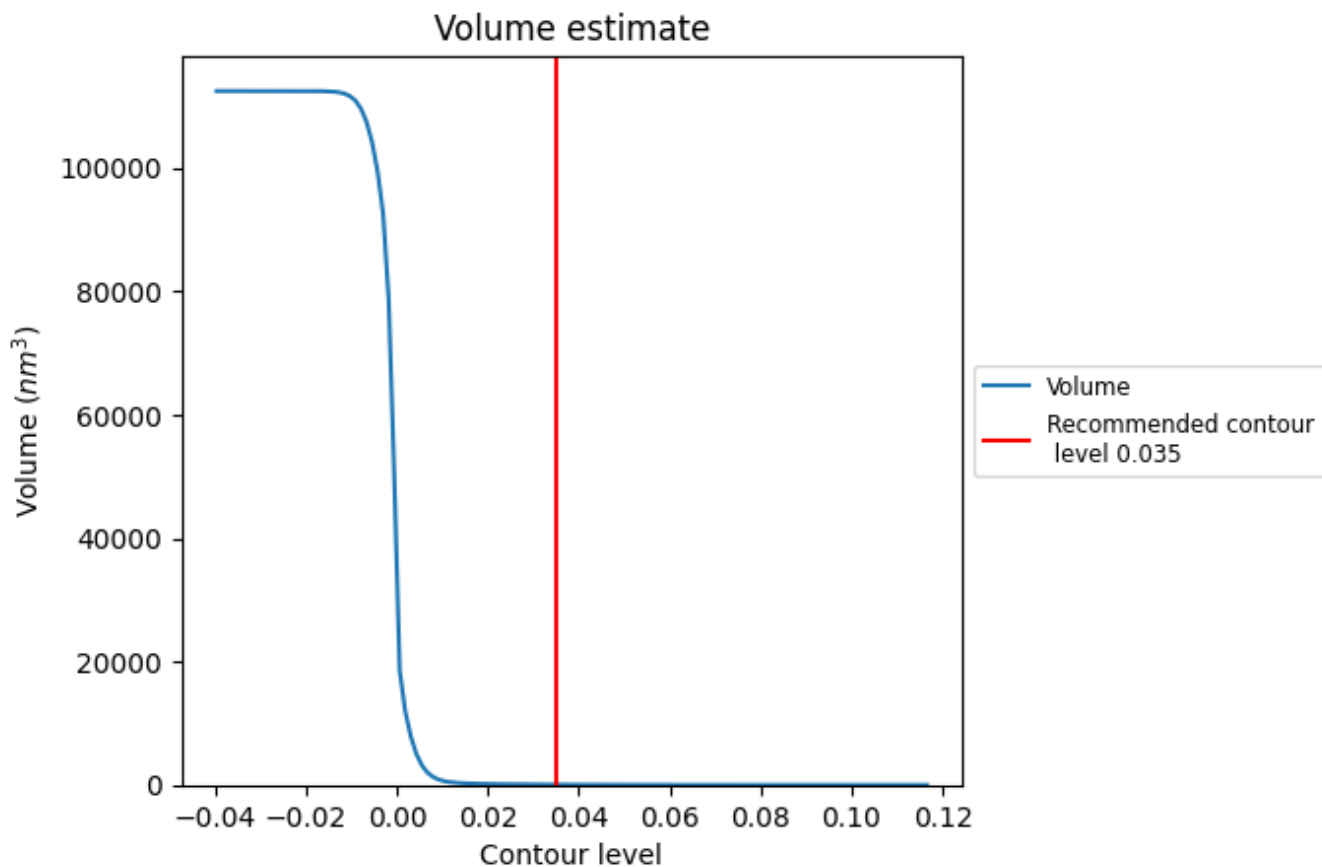
This section contains the results of statistical analysis of the map.

7.1 Map-value distribution [i](#)



The map-value distribution is plotted in 128 intervals along the x-axis. The y-axis is logarithmic. A spike in this graph at zero usually indicates that the volume has been masked.

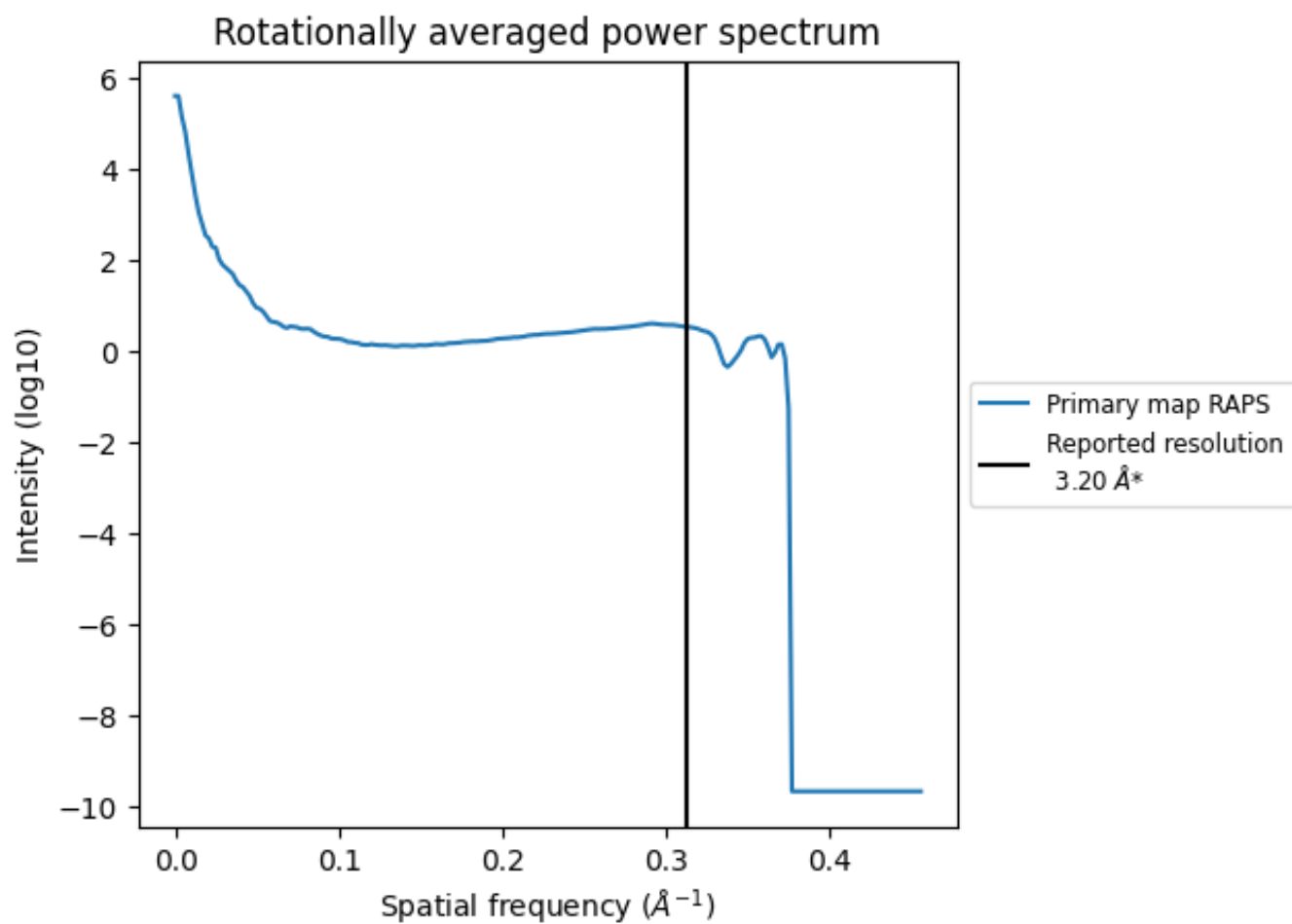
7.2 Volume estimate [\(i\)](#)



The volume at the recommended contour level is 59 nm^3 ; this corresponds to an approximate mass of 53 kDa.

The volume estimate graph shows how the enclosed volume varies with the contour level. The recommended contour level is shown as a vertical line and the intersection between the line and the curve gives the volume of the enclosed surface at the given level.

7.3 Rotationally averaged power spectrum [\(i\)](#)



*Reported resolution corresponds to spatial frequency of 0.312 Å⁻¹

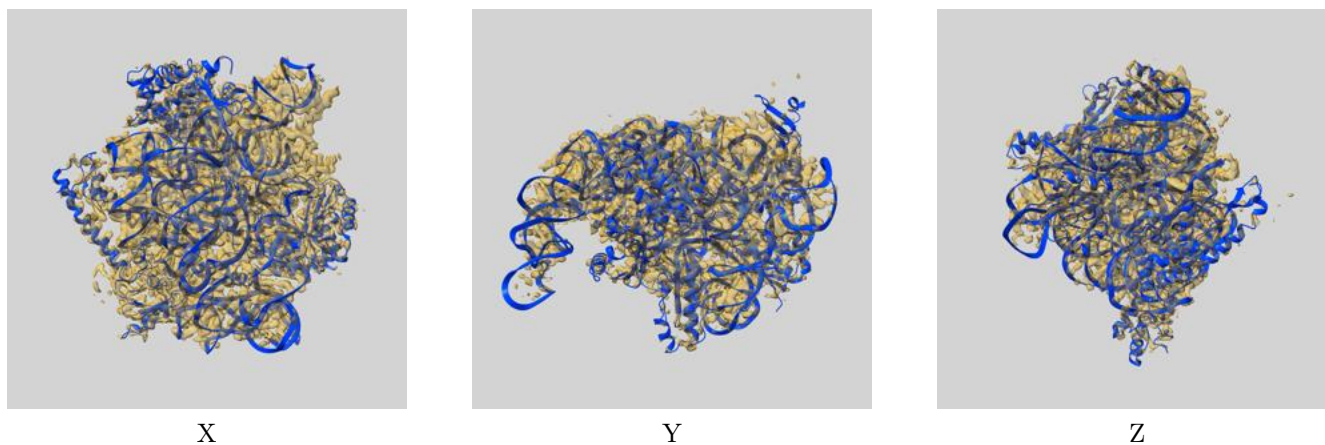
8 Fourier-Shell correlation

This section was not generated. No FSC curve or half-maps provided.

9 Map-model fit [i](#)

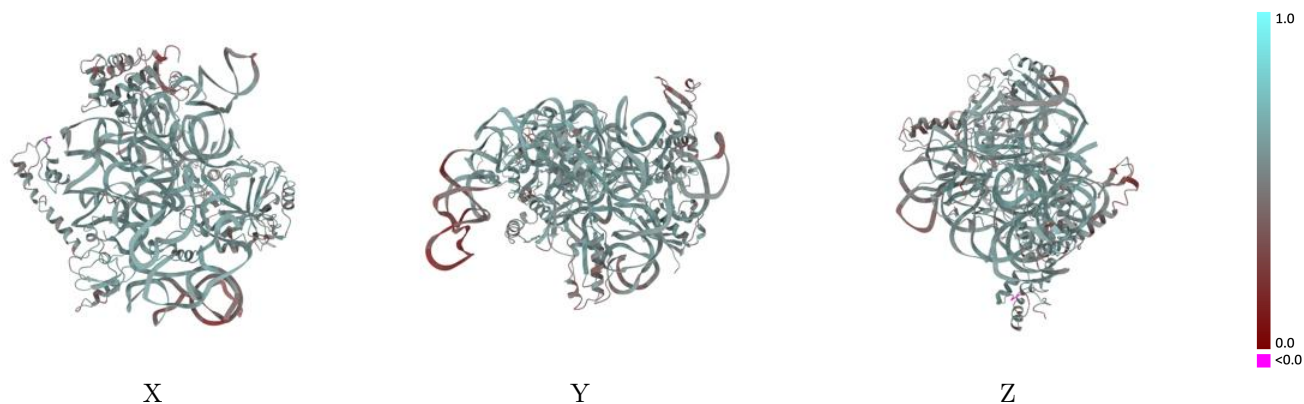
This section contains information regarding the fit between EMDB map EMD-21908 and PDB model 6WUA. Per-residue inclusion information can be found in section 3 on page 6.

9.1 Map-model overlay [i](#)



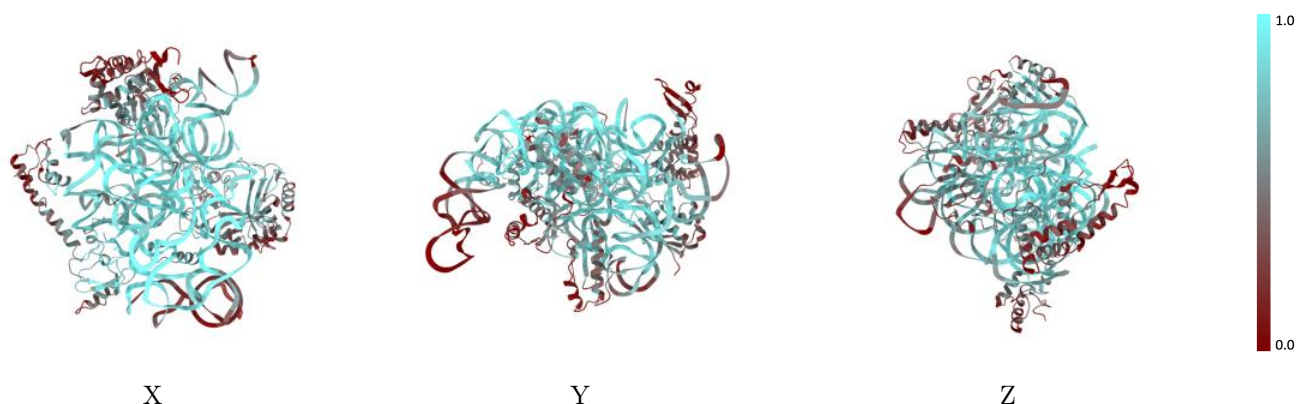
The images above show the 3D surface view of the map at the recommended contour level 0.035 at 50% transparency in yellow overlaid with a ribbon representation of the model coloured in blue. These images allow for the visual assessment of the quality of fit between the atomic model and the map.

9.2 Q-score mapped to coordinate model [\(i\)](#)



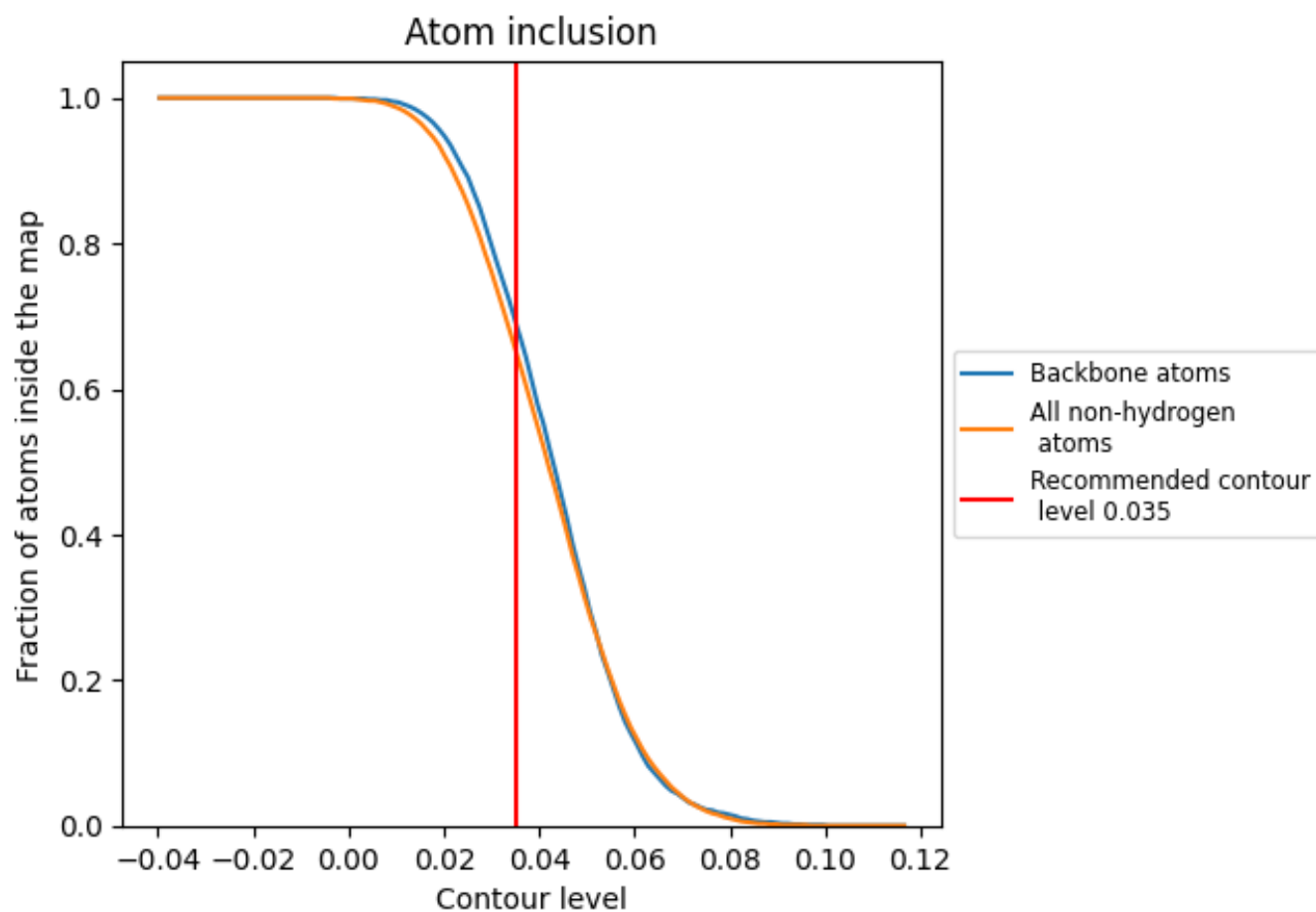
The images above show the model with each residue coloured according to its Q-score. This shows their resolvability in the map with higher Q-score values reflecting better resolvability. Please note: Q-score is calculating the resolvability of atoms, and thus high values are only expected at resolutions at which atoms can be resolved. Low Q-score values may therefore be expected for many entries.

9.3 Atom inclusion mapped to coordinate model [\(i\)](#)



The images above show the model with each residue coloured according to its atom inclusion. This shows to what extent they are inside the map at the recommended contour level (0.035).



















9.4 Atom inclusion [i](#)



At the recommended contour level, 69% of all backbone atoms, 66% of all non-hydrogen atoms, are inside the map.

9.5 Map-model fit summary [i](#)

The table lists the average atom inclusion at the recommended contour level (0.035) and Q-score for the entire model and for each chain.

Chain	Atom inclusion	Q-score
All	 0.6560	 0.5490
a	 0.7640	 0.5580
c	 0.5000	 0.5480
g	 0.3140	 0.4980
i	 0.5690	 0.5570
j	 0.5100	 0.5280
m	 0.4840	 0.5190
n	 0.7830	 0.5950
s	 0.6550	 0.5480

