



Full wwPDB X-ray Structure Validation Report

Dec 12, 2023 – 04:27 pm GMT

PDB ID : 2WXO
Title : The crystal structure of the murine class IA PI 3-kinase p110delta in complex with AS5.
Authors : Berndt, A.; Miller, S.; Williams, O.; Lee, D.D.; Houseman, B.T.; Pacold, J.I.; Gorrec, F.; Hon, W.-C.; Liu, Y.; Rommel, C.; Gaillard, P.; Ruckle, T.; Schwarz, M.K.; Shokat, K.M.; Shaw, J.P.; Williams, R.L.
Deposited on : 2009-11-09
Resolution : 2.49 Å(reported)

This is a Full wwPDB X-ray Structure Validation Report for a publicly released PDB entry.

We welcome your comments at validation@mail.wwpdb.org

A user guide is available at

<https://www.wwpdb.org/validation/2017/XrayValidationReportHelp>

with specific help available everywhere you see the  symbol.

The types of validation reports are described at

<http://www.wwpdb.org/validation/2017/FAQs#types>.

The following versions of software and data (see [references](#) ①) were used in the production of this report:

MolProbity : 4.02b-467
Mogul : 1.8.4, CSD as541be (2020)
Xtrriage (Phenix) : 1.13
EDS : 2.36
buster-report : 1.1.7 (2018)
Percentile statistics : 20191225.v01 (using entries in the PDB archive December 25th 2019)
Refmac : 5.8.0158
CCP4 : 7.0.044 (Gargrove)
Ideal geometry (proteins) : Engh & Huber (2001)
Ideal geometry (DNA, RNA) : Parkinson et al. (1996)
Validation Pipeline (wwPDB-VP) : 2.36

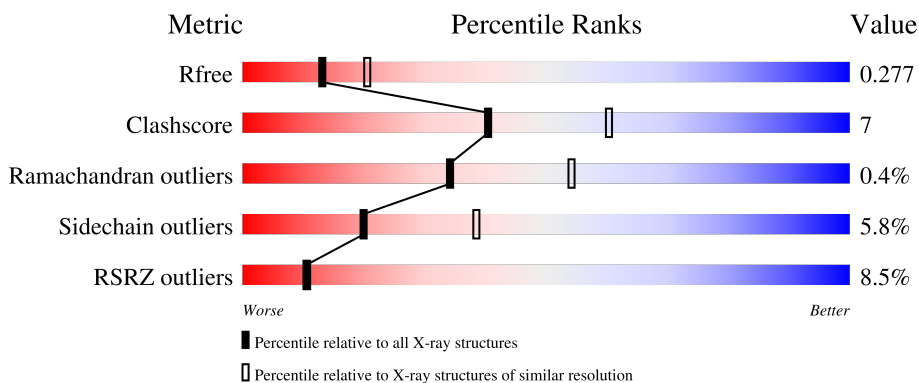
1 Overall quality at a glance

The following experimental techniques were used to determine the structure:

X-RAY DIFFRACTION

The reported resolution of this entry is 2.49 Å.

Percentile scores (ranging between 0-100) for global validation metrics of the entry are shown in the following graphic. The table shows the number of entries on which the scores are based.



Metric	Whole archive (#Entries)	Similar resolution (#Entries, resolution range(Å))
R_{free}	130704	4661 (2.50-2.50)
Clashscore	141614	5346 (2.50-2.50)
Ramachandran outliers	138981	5231 (2.50-2.50)
Sidechain outliers	138945	5233 (2.50-2.50)
RSRZ outliers	127900	4559 (2.50-2.50)

The table below summarises the geometric issues observed across the polymeric chains and their fit to the electron density. The red, orange, yellow and green segments of the lower bar indicate the fraction of residues that contain outliers for ≥ 3 , 2, 1 and 0 types of geometric quality criteria respectively. A grey segment represents the fraction of residues that are not modelled. The numeric value for each fraction is indicated below the corresponding segment, with a dot representing fractions $\leq 5\%$. The upper red bar (where present) indicates the fraction of residues that have poor fit to the electron density. The numeric value is given above the bar.

Mol	Chain	Length	Quality of chain
1	A	940	

2 Entry composition i

There are 3 unique types of molecules in this entry. The entry contains 6706 atoms, of which 0 are hydrogens and 0 are deuteriums.

In the tables below, the ZeroOcc column contains the number of atoms modelled with zero occupancy, the AltConf column contains the number of residues with at least one atom in alternate conformation and the Trace column contains the number of residues modelled with at most 2 atoms.

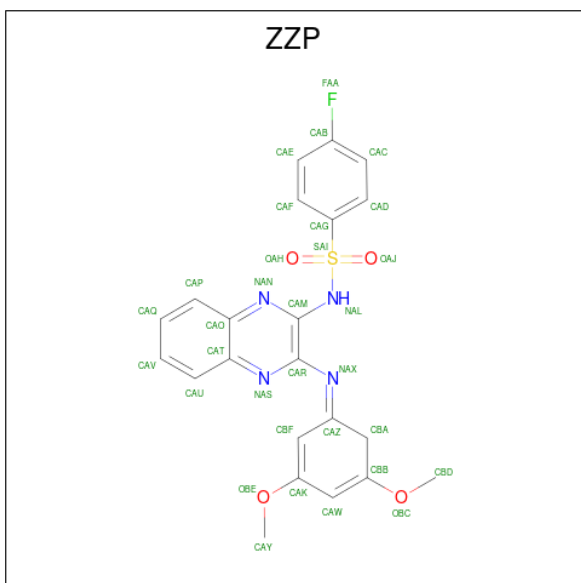
- Molecule 1 is a protein called PHOSPHATIDYLINOSITOL-4,5-BISPHOSPHATE 3-KINASE CATALYTIC SUBUNIT DELTA ISOFORM.

Mol	Chain	Residues	Atoms					ZeroOcc	AltConf	Trace
			Total	C	N	O	S			
1	A	822	6641	4259	1127	1200	55	0	2	0

There is a discrepancy between the modelled and reference sequences:

Chain	Residue	Modelled	Actual	Comment	Reference
A	105	GLY	-	expression tag	UNP Q3UDT3

- Molecule 2 is N-(3-([(1Z)-3,5-DIMETHOXYCYCLOHEXA-2,4-DIEN-1-YLIDENE]AMINO)QUINOXALIN-2-YL)-4-FLUOROBENZENESULFONAMIDE (three-letter code: ZZP) (formula: C₂₂H₁₉FN₄O₄S).



Mol	Chain	Residues	Atoms					ZeroOcc	AltConf	
			Total	C	F	N	O			S
2	A	1	32	22	1	4	4	1	0	0

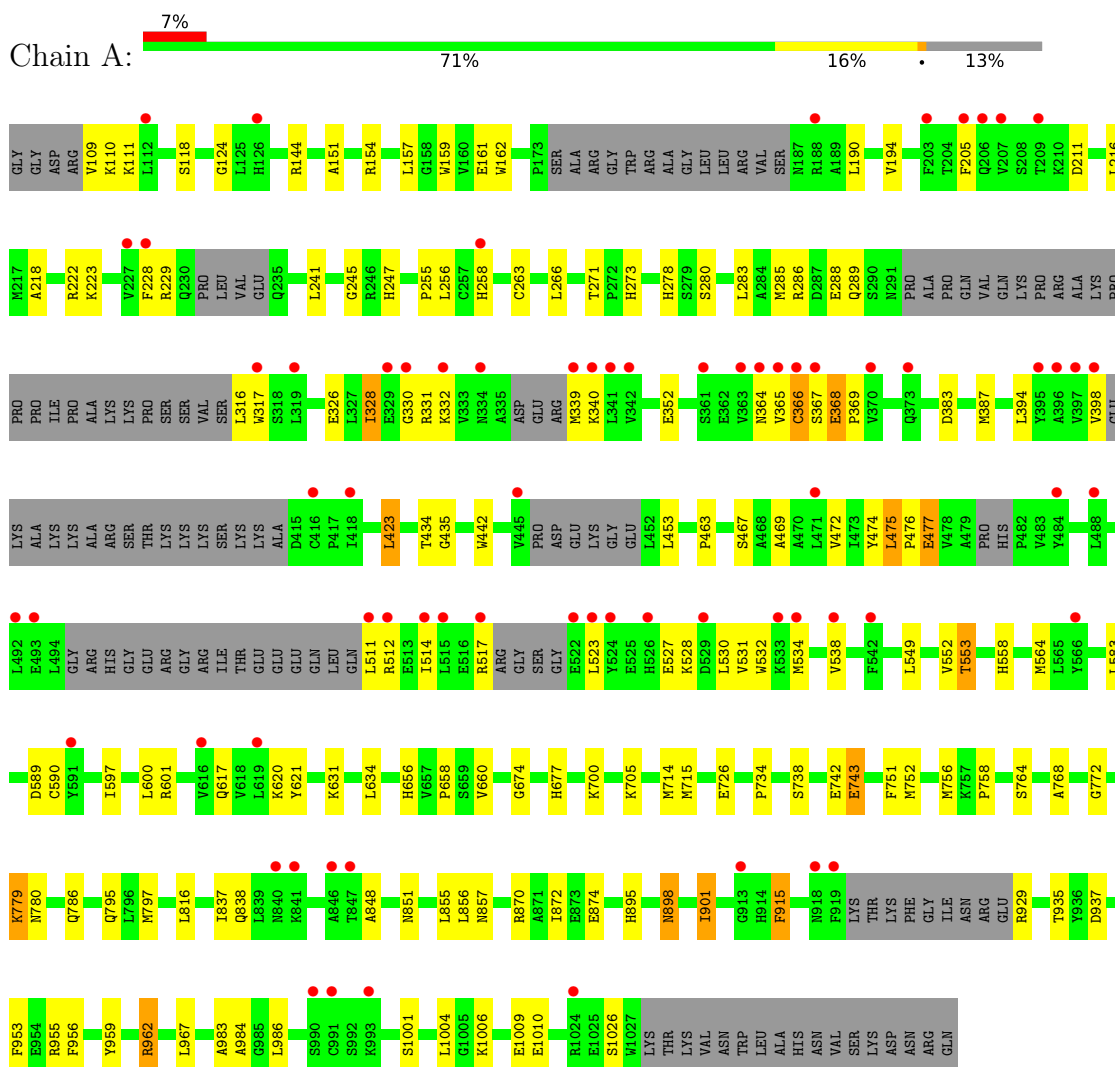
- Molecule 3 is water.

Mol	Chain	Residues	Atoms		ZeroOcc	AltConf
3	A	33	Total 33	O 33	0	0

3 Residue-property plots [i](#)

These plots are drawn for all protein, RNA, DNA and oligosaccharide chains in the entry. The first graphic for a chain summarises the proportions of the various outlier classes displayed in the second graphic. The second graphic shows the sequence view annotated by issues in geometry and electron density. Residues are color-coded according to the number of geometric quality criteria for which they contain at least one outlier: green = 0, yellow = 1, orange = 2 and red = 3 or more. A red dot above a residue indicates a poor fit to the electron density ($RSRZ > 2$). Stretches of 2 or more consecutive residues without any outlier are shown as a green connector. Residues present in the sample, but not in the model, are shown in grey.

- Molecule 1: PHOSPHATIDYLINOSITOL-4,5-BISPHOSPHATE 3-KINASE CATALYTIC SUBUNIT DELTA ISOFORM



4 Data and refinement statistics

Property	Value	Source
Space group	C 1 2 1	Depositor
Cell constants a, b, c, α , β , γ	142.89Å 64.17Å 117.00Å 90.00° 103.33° 90.00°	Depositor
Resolution (Å)	38.90 – 2.49 38.88 – 2.49	Depositor EDS
% Data completeness (in resolution range)	98.5 (38.90-2.49) 98.6 (38.88-2.49)	Depositor EDS
R_{merge}	0.08	Depositor
R_{sym}	(Not available)	Depositor
$\langle I/\sigma(I) \rangle$ ¹	2.59 (at 2.48Å)	Xtrriage
Refinement program	REFMAC 5.5.0046	Depositor
R, R_{free}	0.213 , 0.277 0.216 , 0.277	Depositor DCC
R_{free} test set	1123 reflections (3.12%)	wwPDB-VP
Wilson B-factor (Å ²)	41.1	Xtrriage
Anisotropy	0.104	Xtrriage
Bulk solvent k_{sol} (e/Å ³), B_{sol} (Å ²)	0.34 , 58.3	EDS
L-test for twinning ²	$\langle L \rangle = 0.44$, $\langle L^2 \rangle = 0.26$	Xtrriage
Estimated twinning fraction	No twinning to report.	Xtrriage
F_o, F_c correlation	0.93	EDS
Total number of atoms	6706	wwPDB-VP
Average B, all atoms (Å ²)	20.0	wwPDB-VP

Xtrriage's analysis on translational NCS is as follows: *The largest off-origin peak in the Patterson function is 4.28% of the height of the origin peak. No significant pseudotranslation is detected.*

¹Intensities estimated from amplitudes.

²Theoretical values of $\langle |L| \rangle$, $\langle L^2 \rangle$ for acentric reflections are 0.5, 0.333 respectively for untwinned datasets, and 0.375, 0.2 for perfectly twinned datasets.

5 Model quality [i](#)

5.1 Standard geometry [i](#)

Bond lengths and bond angles in the following residue types are not validated in this section: ZYP

The Z score for a bond length (or angle) is the number of standard deviations the observed value is removed from the expected value. A bond length (or angle) with $|Z| > 5$ is considered an outlier worth inspection. RMSZ is the root-mean-square of all Z scores of the bond lengths (or angles).

Mol	Chain	Bond lengths		Bond angles	
		RMSZ	# Z >5	RMSZ	# Z >5
1	A	0.51	0/6790	0.61	1/9161 (0.0%)

There are no bond length outliers.

All (1) bond angle outliers are listed below:

Mol	Chain	Res	Type	Atoms	Z	Observed(°)	Ideal(°)
1	A	423	LEU	CA-CB-CG	6.28	129.75	115.30

There are no chirality outliers.

There are no planarity outliers.

5.2 Too-close contacts [i](#)

In the following table, the Non-H and H(model) columns list the number of non-hydrogen atoms and hydrogen atoms in the chain respectively. The H(added) column lists the number of hydrogen atoms added and optimized by MolProbity. The Clashes column lists the number of clashes within the asymmetric unit, whereas Symm-Clashes lists symmetry-related clashes.

Mol	Chain	Non-H	H(model)	H(added)	Clashes	Symm-Clashes
1	A	6641	0	6626	95	4
2	A	32	0	19	1	0
3	A	33	0	0	3	0
All	All	6706	0	6645	96	4

The all-atom clashscore is defined as the number of clashes found per 1000 atoms (including hydrogen atoms). The all-atom clashscore for this structure is 7.

All (96) close contacts within the same asymmetric unit are listed below, sorted by their clash magnitude.

Atom-1	Atom-2	Interatomic distance (Å)	Clash overlap (Å)
1:A:837:ILE:CD1	1:A:901:ILE:HD11	1.85	1.06
1:A:367:SER:HB3	1:A:368:GLU:C	1.79	1.04
1:A:962:ARG:HG2	1:A:962:ARG:HH11	1.33	0.93
1:A:837:ILE:HD12	1:A:901:ILE:HD11	1.49	0.90
1:A:837:ILE:CD1	1:A:901:ILE:CD1	2.57	0.82
1:A:367:SER:HB3	1:A:368:GLU:CA	2.11	0.80
1:A:245:GLY:HA3	1:A:768:ALA:HB2	1.67	0.76
1:A:962:ARG:HG2	1:A:962:ARG:NH1	2.00	0.71
1:A:837:ILE:HD13	1:A:901:ILE:HD11	1.72	0.70
1:A:553:THR:HG21	1:A:564:MET:HG2	1.77	0.67
1:A:895:HIS:H	1:A:898:ASN:HD21	1.40	0.66
1:A:621:TYR:CZ	1:A:983:ALA:HB2	2.30	0.65
1:A:715:MET:HE1	1:A:751:PHE:HD1	1.62	0.65
1:A:534:MET:O	1:A:538:VAL:HG23	1.97	0.63
1:A:837:ILE:HD13	1:A:901:ILE:CD1	2.28	0.62
1:A:110:LYS:NZ	1:A:144:ARG:HH12	1.98	0.62
1:A:955:ARG:NH2	1:A:959:TYR:OH	2.32	0.62
1:A:984:ALA:CB	1:A:986:LEU:HD13	2.33	0.59
1:A:617:GLN:HE21	1:A:984:ALA:HA	1.68	0.59
1:A:435:GLY:HA2	1:A:475:LEU:O	2.03	0.58
2:A:1500:ZYP:NAS	2:A:1500:ZYP:HBF	2.19	0.58
1:A:154:ARG:NH2	1:A:674:GLY:O	2.37	0.56
1:A:838:GLN:NE2	1:A:937:ASP:OD2	2.38	0.56
1:A:984:ALA:HB1	1:A:986:LEU:HD13	1.86	0.56
1:A:527:GLU:O	1:A:531:VAL:HG23	2.07	0.55
1:A:617:GLN:NE2	1:A:984:ALA:HA	2.23	0.54
1:A:278:HIS:HD2	1:A:280:SER:OG	1.90	0.54
1:A:110:LYS:HZ1	1:A:144:ARG:HH12	1.55	0.54
1:A:617:GLN:HE22	1:A:620:LYS:NZ	2.08	0.52
1:A:583:LEU:HD11	1:A:600:LEU:HD11	1.90	0.52
1:A:205:PHE:CE1	1:A:223:LYS:HG3	2.44	0.52
1:A:118:SER:HB3	1:A:124:GLY:HA2	1.91	0.52
1:A:247:HIS:HB2	1:A:738:SER:HA	1.90	0.52
1:A:962:ARG:HH11	1:A:962:ARG:CG	2.14	0.52
1:A:255:PRO:HG2	1:A:258:HIS:CD2	2.45	0.51
1:A:157:LEU:HD22	1:A:161:GLU:HB3	1.91	0.51
1:A:953:PHE:O	1:A:956:PHE:HB3	2.11	0.51
1:A:216:LEU:HD22	1:A:241:LEU:HD11	1.93	0.50
1:A:387:MET:CE	1:A:590:CYS:SG	2.99	0.50
1:A:734:PRO:O	1:A:816:LEU:HD22	2.11	0.50
1:A:367:SER:CB	1:A:368:GLU:HB3	2.42	0.49
1:A:656:HIS:O	1:A:658:PRO:HD3	2.13	0.49

Continued on next page...

Continued from previous page...

Atom-1	Atom-2	Interatomic distance (Å)	Clash overlap (Å)
1:A:162:TRP:CE3	1:A:286:ARG:HG3	2.47	0.49
1:A:915:PHE:C	1:A:915:PHE:CD1	2.87	0.48
1:A:387:MET:HE2	1:A:590:CYS:SG	2.53	0.48
1:A:367:SER:HB3	1:A:368:GLU:CB	2.43	0.48
1:A:434:THR:HG21	1:A:477:GLU:HA	1.96	0.47
1:A:218:ALA:O	1:A:222:ARG:HG3	2.14	0.47
1:A:271:THR:O	1:A:273:HIS:HD2	1.97	0.47
1:A:620:LYS:HE2	1:A:660:VAL:HG11	1.96	0.46
1:A:442:TRP:CH2	1:A:463:PRO:HD2	2.50	0.46
1:A:387:MET:HG3	1:A:589:ASP:HA	1.97	0.46
1:A:364:ASN:C	1:A:366:CYS:H	2.19	0.46
1:A:367:SER:HB3	1:A:368:GLU:HB3	1.96	0.46
1:A:194:VAL:HG21	1:A:216:LEU:HD21	1.98	0.45
1:A:848:ALA:HB2	1:A:857:ASN:ND2	2.31	0.45
1:A:532:TRP:HZ3	1:A:564:MET:HE2	1.81	0.45
1:A:151:ALA:HB2	1:A:674:GLY:O	2.16	0.45
1:A:211:ASP:O	1:A:256:LEU:HG	2.17	0.45
1:A:330:GLY:O	1:A:368:GLU:HA	2.16	0.45
1:A:326:GLU:HB3	1:A:474:TYR:HB3	1.99	0.45
1:A:797:MET:HG2	1:A:967:LEU:CD2	2.46	0.45
1:A:915:PHE:C	1:A:915:PHE:HD1	2.20	0.45
1:A:532:TRP:CZ3	1:A:564:MET:HE2	2.51	0.45
1:A:367:SER:HB3	1:A:368:GLU:O	2.14	0.45
1:A:331:ARG:O	1:A:469:ALA:HA	2.17	0.44
1:A:700:LYS:HE3	1:A:756:MET:O	2.18	0.44
1:A:383:ASP:HA	1:A:558:HIS:HB3	1.99	0.44
1:A:109:VAL:N	3:A:2001:HOH:O	2.50	0.44
1:A:285:MET:O	1:A:288:GLU:HG2	2.18	0.43
1:A:549:LEU:HD21	1:A:564:MET:HE1	2.00	0.43
1:A:870:ARG:NH2	1:A:874:GLU:OE2	2.44	0.43
1:A:159:TRP:HB3	1:A:283:LEU:HG	2.01	0.43
1:A:289:GLN:HG2	1:A:677:HIS:CD2	2.53	0.43
1:A:962:ARG:HD3	3:A:2033:HOH:O	2.19	0.43
1:A:229:ARG:HA	1:A:229:ARG:HD3	1.82	0.43
1:A:368:GLU:O	1:A:368:GLU:HG3	2.19	0.43
1:A:278:HIS:CD2	1:A:280:SER:H	2.37	0.42
1:A:768:ALA:HB3	1:A:772:GLY:HA3	2.00	0.42
1:A:263:CYS:HA	1:A:266:LEU:HD12	2.01	0.42
1:A:742:GLU:HB2	1:A:764:SER:O	2.19	0.42
1:A:597:ILE:O	1:A:601:ARG:HG3	2.19	0.42
1:A:758:PRO:HA	3:A:2018:HOH:O	2.20	0.41

Continued on next page...

Continued from previous page...

Atom-1	Atom-2	Interatomic distance (Å)	Clash overlap (Å)
1:A:1006:LYS:HB3	1:A:1010:GLU:HB2	2.02	0.41
1:A:743:GLU:HG2	1:A:764:SER:O	2.21	0.41
1:A:328:ILE:HB	1:A:472:VAL:HG23	2.02	0.41
1:A:368:GLU:N	1:A:369:PRO:CD	2.83	0.41
1:A:512:ARG:CZ	1:A:512:ARG:HB3	2.50	0.41
1:A:528:LYS:HG2	1:A:552:VAL:HG12	2.02	0.40
1:A:435:GLY:O	1:A:475:LEU:N	2.41	0.40
1:A:758:PRO:HB3	1:A:779:LYS:HD3	2.04	0.40
1:A:929:ARG:HH22	1:A:1001:SER:HA	1.86	0.40
1:A:475:LEU:HA	1:A:476:PRO:HD3	1.90	0.40
1:A:856:LEU:HD11	1:A:872:ILE:HD11	2.04	0.40
1:A:700:LYS:NZ	1:A:780:ASN:O	2.47	0.40
1:A:715:MET:CE	1:A:751:PHE:HD1	2.32	0.40

All (4) symmetry-related close contacts are listed below. The label for Atom-2 includes the symmetry operator and encoded unit-cell translations to be applied.

Atom-1	Atom-2	Interatomic distance (Å)	Clash overlap (Å)
1:A:714:MET:CE	1:A:714:MET:CE[2_555]	0.94	1.26
1:A:714:MET:SD	1:A:714:MET:CE[2_555]	1.15	1.05
1:A:714:MET:CG	1:A:714:MET:CE[2_555]	2.03	0.17
1:A:714:MET:SD	1:A:714:MET:SD[2_555]	2.08	0.12

5.3 Torsion angles [i](#)

5.3.1 Protein backbone [i](#)

In the following table, the Percentiles column shows the percent Ramachandran outliers of the chain as a percentile score with respect to all X-ray entries followed by that with respect to entries of similar resolution.

The Analysed column shows the number of residues for which the backbone conformation was analysed, and the total number of residues.

Mol	Chain	Analysed	Favoured	Allowed	Outliers	Percentiles
1	A	802/940 (85%)	775 (97%)	24 (3%)	3 (0%)	34 54

All (3) Ramachandran outliers are listed below:

Mol	Chain	Res	Type
1	A	365	VAL
1	A	328	ILE
1	A	368	GLU

5.3.2 Protein sidechains [i](#)

In the following table, the Percentiles column shows the percent sidechain outliers of the chain as a percentile score with respect to all X-ray entries followed by that with respect to entries of similar resolution.

The Analysed column shows the number of residues for which the sidechain conformation was analysed, and the total number of residues.

Mol	Chain	Analysed	Rotameric	Outliers	Percentiles
1	A	730/827 (88%)	688 (94%)	42 (6%)	20 38

All (42) residues with a non-rotameric sidechain are listed below:

Mol	Chain	Res	Type
1	A	111	LYS
1	A	190	LEU
1	A	228	PHE
1	A	316	LEU
1	A	317	TRP
1	A	332	LYS
1	A	339	MET
1	A	340	LYS
1	A	352	GLU
1	A	366	CYS
1	A	394	LEU
1	A	398	VAL
1	A	423	LEU
1	A	453	LEU
1	A	467	SER
1	A	475	LEU
1	A	477	GLU
1	A	511	LEU
1	A	514	ILE
1	A	517	ARG
1	A	523	LEU
1	A	530	LEU
1	A	553	THR
1	A	631	LYS

Continued on next page...

Continued from previous page...

Mol	Chain	Res	Type
1	A	634	LEU
1	A	705	LYS
1	A	726	GLU
1	A	743	GLU
1	A	752	MET
1	A	779	LYS
1	A	786	GLN
1	A	795	GLN
1	A	851	ASN
1	A	855	LEU
1	A	898	ASN
1	A	901	ILE
1	A	915	PHE
1	A	935	THR
1	A	962	ARG
1	A	1004	LEU
1	A	1009	GLU
1	A	1026	SER

Sometimes sidechains can be flipped to improve hydrogen bonding and reduce clashes. All (14) such sidechains are listed below:

Mol	Chain	Res	Type
1	A	116	GLN
1	A	156	GLN
1	A	273	HIS
1	A	278	HIS
1	A	291	ASN
1	A	344	GLN
1	A	536	HIS
1	A	539	GLN
1	A	617	GLN
1	A	748	GLN
1	A	780	ASN
1	A	851	ASN
1	A	895	HIS
1	A	898	ASN

5.3.3 RNA

There are no RNA molecules in this entry.

5.4 Non-standard residues in protein, DNA, RNA chains [i](#)

There are no non-standard protein/DNA/RNA residues in this entry.

5.5 Carbohydrates [i](#)

There are no monosaccharides in this entry.

5.6 Ligand geometry [i](#)

1 ligand is modelled in this entry.

In the following table, the Counts columns list the number of bonds (or angles) for which Mogul statistics could be retrieved, the number of bonds (or angles) that are observed in the model and the number of bonds (or angles) that are defined in the Chemical Component Dictionary. The Link column lists molecule types, if any, to which the group is linked. The Z score for a bond length (or angle) is the number of standard deviations the observed value is removed from the expected value. A bond length (or angle) with $|Z| > 2$ is considered an outlier worth inspection. RMSZ is the root-mean-square of all Z scores of the bond lengths (or angles).

Mol	Type	Chain	Res	Link	Bond lengths			Bond angles		
					Counts	RMSZ	# Z > 2	Counts	RMSZ	# Z > 2
2	ZZP	A	1500	-	31,35,35	2.29	8 (25%)	40,50,50	1.94	6 (15%)

In the following table, the Chirals column lists the number of chiral outliers, the number of chiral centers analysed, the number of these observed in the model and the number defined in the Chemical Component Dictionary. Similar counts are reported in the Torsion and Rings columns. '-' means no outliers of that kind were identified.

Mol	Type	Chain	Res	Link	Chirals	Torsions	Rings
2	ZZP	A	1500	-	-	5/18/31/31	0/4/4/4

All (8) bond length outliers are listed below:

Mol	Chain	Res	Type	Atoms	Z	Observed(Å)	Ideal(Å)
2	A	1500	ZZP	OAH-SAI	8.72	1.53	1.43
2	A	1500	ZZP	OAJ-SAI	4.77	1.48	1.43
2	A	1500	ZZP	CAM-NAL	-3.45	1.34	1.40
2	A	1500	ZZP	CAW-CBB	2.52	1.40	1.34
2	A	1500	ZZP	CBF-CAK	2.25	1.40	1.36
2	A	1500	ZZP	CAZ-NAX	2.07	1.33	1.29
2	A	1500	ZZP	SAI-NAL	2.04	1.67	1.63
2	A	1500	ZZP	CAO-NAN	-2.01	1.34	1.37

All (6) bond angle outliers are listed below:

Mol	Chain	Res	Type	Atoms	Z	Observed(°)	Ideal(°)
2	A	1500	ZZP	OAH-SAI-OAJ	-6.93	111.03	119.55
2	A	1500	ZZP	OBC-CBB-CBA	4.52	120.01	110.71
2	A	1500	ZZP	OBC-CBB-CAW	-4.36	120.59	126.13
2	A	1500	ZZP	CAK-CBF-CAZ	-4.00	119.42	125.37
2	A	1500	ZZP	CBD-OBC-CBB	-3.34	113.07	117.36
2	A	1500	ZZP	CAM-NAN-CAO	2.86	122.08	116.56

There are no chirality outliers.

All (5) torsion outliers are listed below:

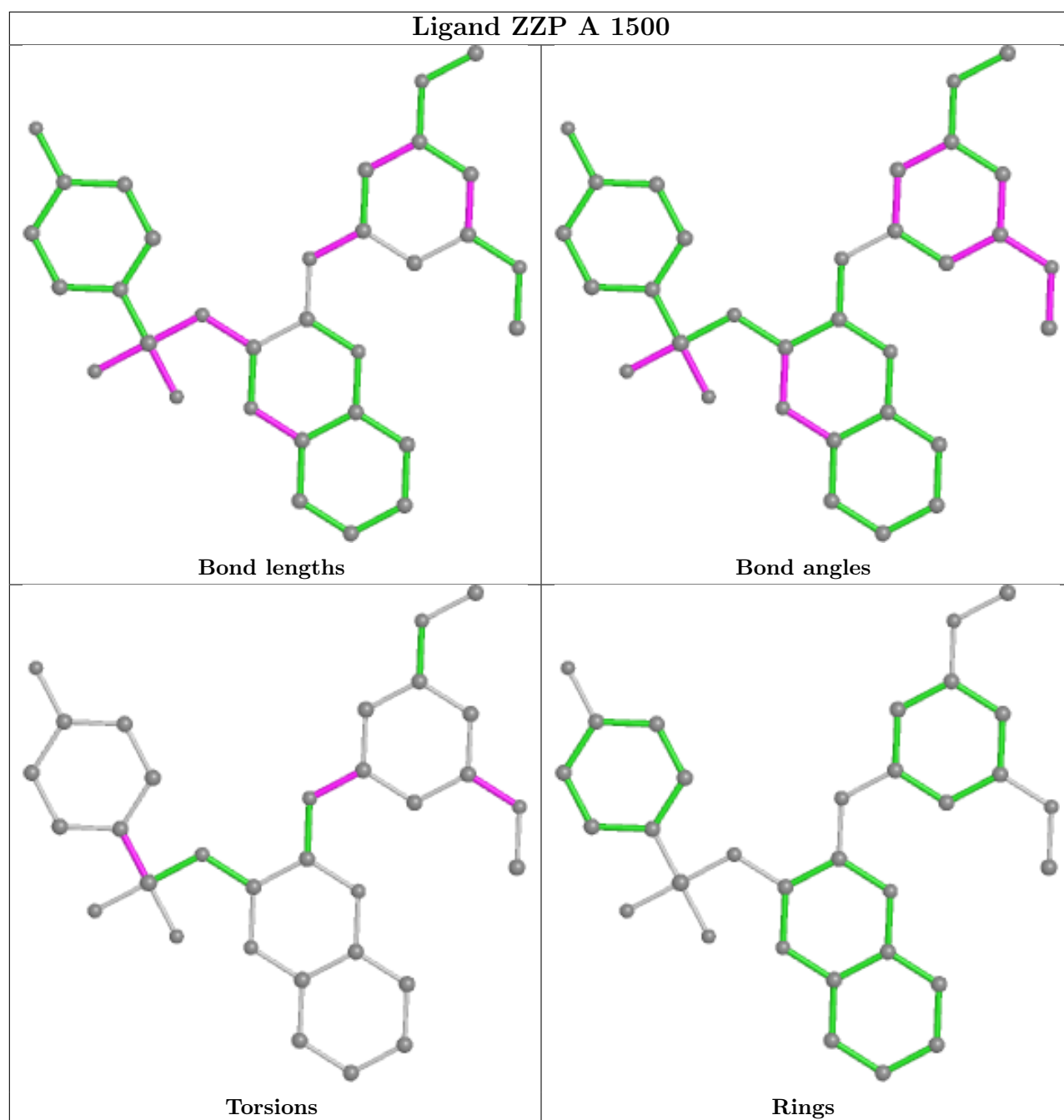
Mol	Chain	Res	Type	Atoms
2	A	1500	ZZP	CAW-CBB-OBC-CBD
2	A	1500	ZZP	CBA-CBB-OBC-CBD
2	A	1500	ZZP	CAD-CAG-SAI-OAJ
2	A	1500	ZZP	CAF-CAG-SAI-OAJ
2	A	1500	ZZP	CBA-CAZ-NAX-CAR

There are no ring outliers.

1 monomer is involved in 1 short contact:

Mol	Chain	Res	Type	Clashes	Symm-Clashes
2	A	1500	ZZP	1	0

The following is a two-dimensional graphical depiction of Mogul quality analysis of bond lengths, bond angles, torsion angles, and ring geometry for all instances of the Ligand of Interest. In addition, ligands with molecular weight > 250 and outliers as shown on the validation Tables will also be included. For torsion angles, if less than 5% of the Mogul distribution of torsion angles is within 10 degrees of the torsion angle in question, then that torsion angle is considered an outlier. Any bond that is central to one or more torsion angles identified as an outlier by Mogul will be highlighted in the graph. For rings, the root-mean-square deviation (RMSD) between the ring in question and similar rings identified by Mogul is calculated over all ring torsion angles. If the average RMSD is greater than 60 degrees and the minimal RMSD between the ring in question and any Mogul-identified rings is also greater than 60 degrees, then that ring is considered an outlier. The outliers are highlighted in purple. The color gray indicates Mogul did not find sufficient equivalents in the CSD to analyse the geometry.



5.7 Other polymers [\(i\)](#)

There are no such residues in this entry.

5.8 Polymer linkage issues [\(i\)](#)

There are no chain breaks in this entry.

6 Fit of model and data

6.1 Protein, DNA and RNA chains

In the following table, the column labelled ‘#RSRZ > 2’ contains the number (and percentage) of RSRZ outliers, followed by percent RSRZ outliers for the chain as percentile scores relative to all X-ray entries and entries of similar resolution. The OWAB column contains the minimum, median, 95th percentile and maximum values of the occupancy-weighted average B-factor per residue. The column labelled ‘Q < 0.9’ lists the number of (and percentage) of residues with an average occupancy less than 0.9.

Mol	Chain	Analysed	<RSRZ>	#RSRZ>2	OWAB(Å ²)	Q<0.9
1	A	822/940 (87%)	0.50	70 (8%) 10 10	8, 19, 35, 54	0

All (70) RSRZ outliers are listed below:

Mol	Chain	Res	Type	RSRZ
1	A	341	LEU	6.6
1	A	317	TRP	6.2
1	A	366	CYS	5.5
1	A	334	ASN	5.2
1	A	919	PHE	5.2
1	A	492	LEU	4.7
1	A	488	LEU	4.3
1	A	514	ILE	4.3
1	A	591	TYR	4.3
1	A	395	TYR	4.0
1	A	330	GLY	3.9
1	A	846	ALA	3.8
1	A	340	LYS	3.7
1	A	205	PHE	3.6
1	A	228	PHE	3.6
1	A	522	GLU	3.4
1	A	511	LEU	3.1
1	A	227	VAL	3.1
1	A	367	SER	3.0
1	A	396	ALA	3.0
1	A	332	LYS	3.0
1	A	512	ARG	3.0
1	A	416	CYS	3.0
1	A	517	ARG	2.9
1	A	542	PHE	2.9
1	A	339	MET	2.9
1	A	1024	ARG	2.9

Continued on next page...

Continued from previous page...

Mol	Chain	Res	Type	RSRZ
1	A	493	GLU	2.8
1	A	329	GLU	2.8
1	A	206	GLN	2.8
1	A	847	THR	2.7
1	A	370	VAL	2.7
1	A	529	ASP	2.7
1	A	207	VAL	2.7
1	A	990	SER	2.7
1	A	841	LYS	2.7
1	A	993	LYS	2.7
1	A	538	VAL	2.6
1	A	484	TYR	2.6
1	A	342	VAL	2.6
1	A	524	TYR	2.6
1	A	533	LYS	2.5
1	A	913	GLY	2.5
1	A	515	LEU	2.5
1	A	361	SER	2.4
1	A	365	VAL	2.4
1	A	398	VAL	2.3
1	A	418	ILE	2.3
1	A	209	THR	2.3
1	A	523	LEU	2.3
1	A	363	VAL	2.3
1	A	991	CYS	2.3
1	A	373	GLN	2.3
1	A	203	PHE	2.3
1	A	188	ARG	2.3
1	A	364	ASN	2.3
1	A	471	LEU	2.3
1	A	619	LEU	2.2
1	A	397	VAL	2.2
1	A	616	VAL	2.2
1	A	918	ASN	2.1
1	A	534	MET	2.1
1	A	445	VAL	2.1
1	A	258	HIS	2.0
1	A	526	HIS	2.0
1	A	566	TYR	2.0
1	A	840	ASN	2.0
1	A	319	LEU	2.0
1	A	126	HIS	2.0

Continued on next page...

Continued from previous page...

Mol	Chain	Res	Type	RSRZ
1	A	112	LEU	2.0

6.2 Non-standard residues in protein, DNA, RNA chains [i](#)

There are no non-standard protein/DNA/RNA residues in this entry.

6.3 Carbohydrates [i](#)

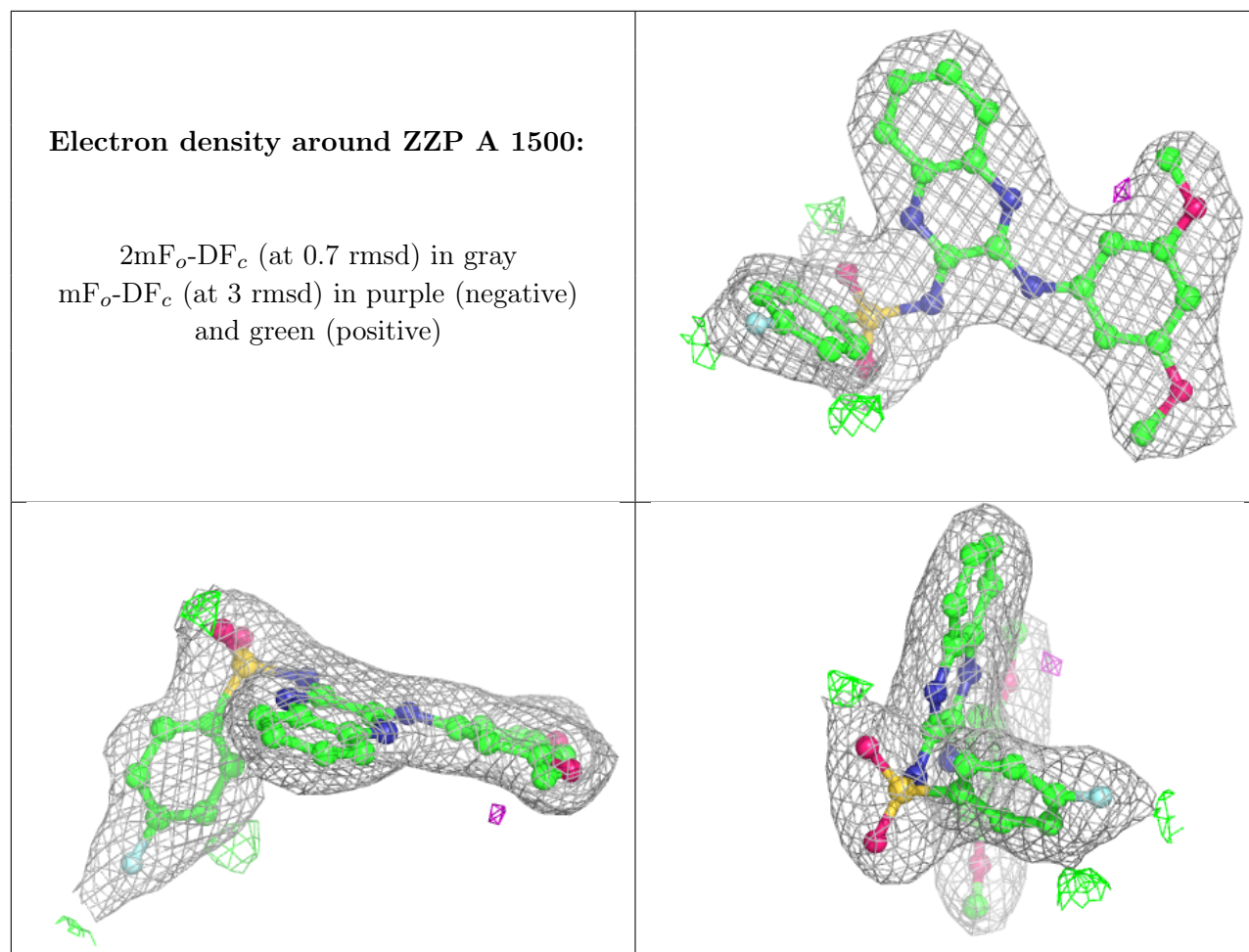
There are no monosaccharides in this entry.

6.4 Ligands [i](#)

In the following table, the Atoms column lists the number of modelled atoms in the group and the number defined in the chemical component dictionary. The B-factors column lists the minimum, median, 95th percentile and maximum values of B factors of atoms in the group. The column labelled 'Q< 0.9' lists the number of atoms with occupancy less than 0.9.

Mol	Type	Chain	Res	Atoms	RSCC	RSR	B-factors(\AA^2)	Q<0.9
2	ZZP	A	1500	32/32	0.97	0.15	20,25,33,35	0

The following is a graphical depiction of the model fit to experimental electron density of all instances of the Ligand of Interest. In addition, ligands with molecular weight > 250 and outliers as shown on the geometry validation Tables will also be included. Each fit is shown from different orientation to approximate a three-dimensional view.



6.5 Other polymers [i](#)

There are no such residues in this entry.