



Full wwPDB X-ray Structure Validation Report ⓘ

Aug 10, 2020 – 02:45 AM BST

PDB ID : 3WY6
Title : Structure of hyperthermophilic family 12 endocellulase (E197A) from *Pyrococcus furiosus* in complex with laminaribiose
Authors : Kataoka, M.; Ishikawa, K.
Deposited on : 2014-08-20
Resolution : 1.45 Å(reported)

This is a Full wwPDB X-ray Structure Validation Report for a publicly released PDB entry.

We welcome your comments at validation@mail.wwpdb.org

A user guide is available at

<https://www.wwpdb.org/validation/2017/XrayValidationReportHelp>

with specific help available everywhere you see the ⓘ symbol.

The following versions of software and data (see [references ⓘ](#)) were used in the production of this report:

MolProbity : 4.02b-467
Mogul : 1.8.5 (274361), CSD as541be (2020)
Xtriage (Phenix) : 1.13
EDS : 2.13.1
Percentile statistics : 20191225.v01 (using entries in the PDB archive December 25th 2019)
Refmac : 5.8.0158
CCP4 : 7.0.044 (Gargrove)
Ideal geometry (proteins) : Engh & Huber (2001)
Ideal geometry (DNA, RNA) : Parkinson et al. (1996)
Validation Pipeline (wwPDB-VP) : 2.13.1

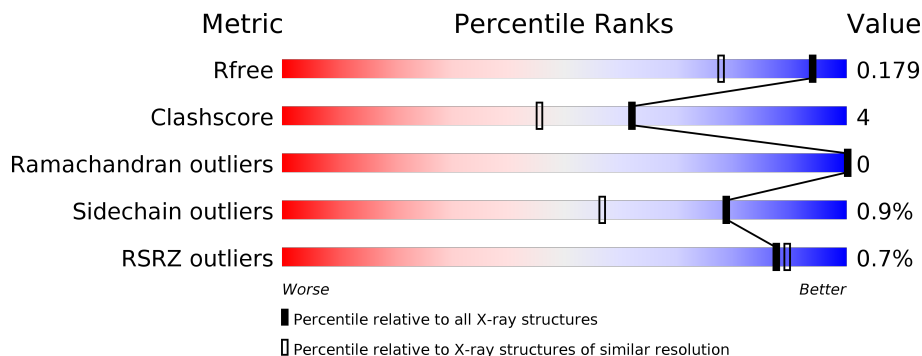
1 Overall quality at a glance

The following experimental techniques were used to determine the structure:

X-RAY DIFFRACTION


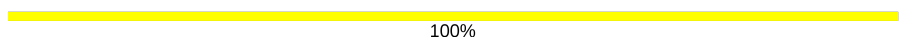
The reported resolution of this entry is 1.45 Å.

Percentile scores (ranging between 0-100) for global validation metrics of the entry are shown in the following graphic. The table shows the number of entries on which the scores are based.



Metric	Whole archive (#Entries)	Similar resolution (#Entries, resolution range(Å))
R_{free}	130704	1156 (1.46-1.46)
Clashscore	141614	1202 (1.46-1.46)
Ramachandran outliers	138981	1178 (1.46-1.46)
Sidechain outliers	138945	1178 (1.46-1.46)
RSRZ outliers	127900	1139 (1.46-1.46)

The table below summarises the geometric issues observed across the polymeric chains and their fit to the electron density. The red, orange, yellow and green segments on the lower bar indicate the fraction of residues that contain outliers for ≥ 3 , 2, 1 and 0 types of geometric quality criteria respectively. A grey segment represents the fraction of residues that are not modelled. The numeric value for each fraction is indicated below the corresponding segment, with a dot representing fractions $\leq 5\%$. The upper red bar (where present) indicates the fraction of residues that have poor fit to the electron density. The numeric value is given above the bar.

Mol	Chain	Length	Quality of chain
1	A	319	 % 76% 9% 15%
2	B	2	 100%

2 Entry composition [i](#)

There are 7 unique types of molecules in this entry. The entry contains 2623 atoms, of which 0 are hydrogens and 0 are deuteriums.

In the tables below, the ZeroOcc column contains the number of atoms modelled with zero occupancy, the AltConf column contains the number of residues with at least one atom in alternate conformation and the Trace column contains the number of residues modelled with at most 2 atoms.

- Molecule 1 is a protein called Endoglucanase A.

Mol	Chain	Residues	Atoms					ZeroOcc	AltConf	Trace
			Total	C	N	O	S			
1	A	270	2241	1456	356	426	3	0	10	0

There is a discrepancy between the modelled and reference sequences:

Chain	Residue	Modelled	Actual	Comment	Reference
A	197	ALA	GLU	engineered mutation	UNP Q9V2T0

- Molecule 2 is an oligosaccharide called beta-D-glucopyranose-(1-3)-beta-D-glucopyranose.

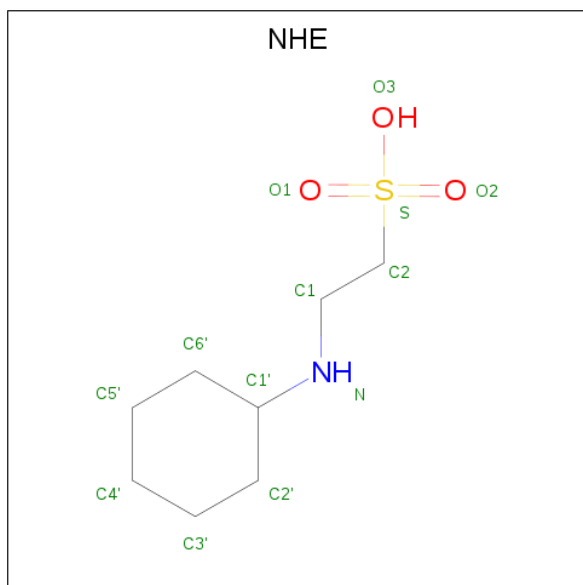


Mol	Chain	Residues	Atoms			ZeroOcc	AltConf	Trace
			Total	C	O			
2	B	2	23	12	11	0	0	0

- Molecule 3 is CALCIUM ION (three-letter code: CA) (formula: Ca).

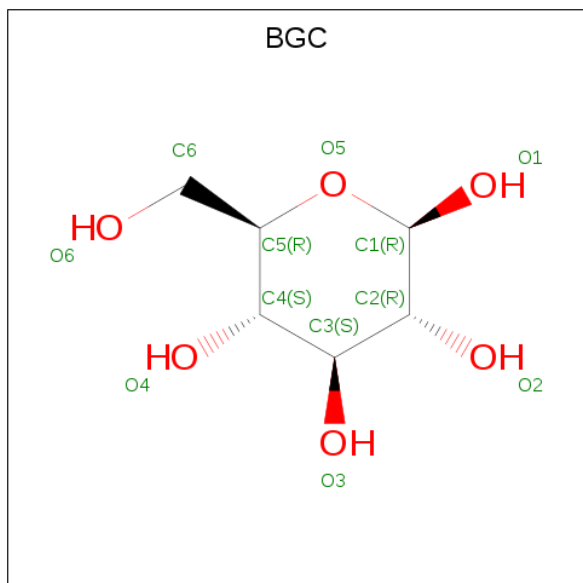
Mol	Chain	Residues	Atoms		ZeroOcc	AltConf
3	A	2	Total	Ca	0	0
			2	2		

- Molecule 4 is 2-[N-CYCLOHEXYLAMINO]ETHANE SULFONIC ACID (three-letter code: NHE) (formula: C₈H₁₇NO₃S).



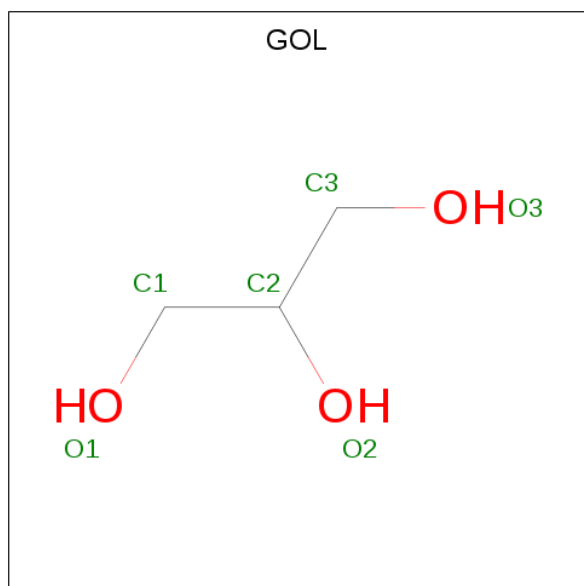
Mol	Chain	Residues	Atoms					ZeroOcc	AltConf
			Total	C	N	O	S		
4	A	1	Total	C	N	O	S	0	0
			13	8	1	3	1		
4	A	1	Total	C	N	O	S	0	0
			13	8	1	3	1		
4	A	1	Total	C	N	O	S	0	0
			13	8	1	3	1		
4	A	1	Total	C	N	O	S	0	0
			13	8	1	3	1		

- Molecule 5 is beta-D-glucopyranose (three-letter code: BGC) (formula: C₆H₁₂O₆).



Mol	Chain	Residues	Atoms	ZeroOcc	AltConf
5	A	1	Total C O 12 6 6	0	0

- Molecule 6 is GLYCEROL (three-letter code: GOL) (formula: $C_3H_8O_3$).



Mol	Chain	Residues	Atoms	ZeroOcc	AltConf
6	A	1	Total C O 6 3 3	0	0
6	A	1	Total C O 6 3 3	0	0
6	A	1	Total C O 6 3 3	0	0
6	A	1	Total C O 6 3 3	0	0
6	A	1	Total C O 6 3 3	0	0
6	A	1	Total C O 6 3 3	0	0
6	A	1	Total C O 6 3 3	0	0
6	A	1	Total C O 6 3 3	0	0

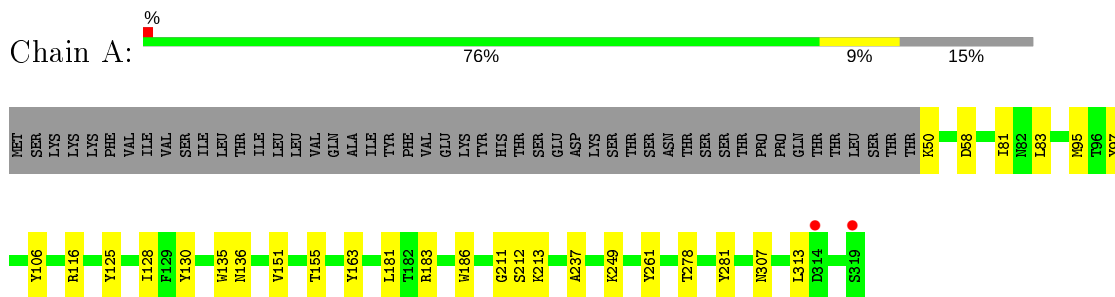
- Molecule 7 is water.

Mol	Chain	Residues	Atoms	ZeroOcc	AltConf
7	A	240	Total O 245 245	0	5

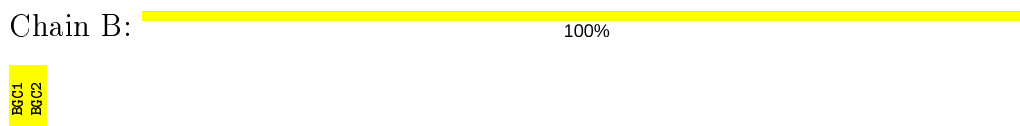
3 Residue-property plots [i](#)

These plots are drawn for all protein, RNA, DNA and oligosaccharide chains in the entry. The first graphic for a chain summarises the proportions of the various outlier classes displayed in the second graphic. The second graphic shows the sequence view annotated by issues in geometry and electron density. Residues are color-coded according to the number of geometric quality criteria for which they contain at least one outlier: green = 0, yellow = 1, orange = 2 and red = 3 or more. A red dot above a residue indicates a poor fit to the electron density ($RSRZ > 2$). Stretches of 2 or more consecutive residues without any outlier are shown as a green connector. Residues present in the sample, but not in the model, are shown in grey.

- Molecule 1: Endoglucanase A



- Molecule 2: beta-D-glucopyranose-(1-3)-beta-D-glucopyranose



4 Data and refinement statistics

Property	Value	Source
Space group	P 21 21 2	Depositor
Cell constants a, b, c, α , β , γ	58.03Å 118.86Å 46.87Å 90.00° 90.00° 90.00°	Depositor
Resolution (Å)	41.55 – 1.45 41.52 – 1.45	Depositor EDS
% Data completeness (in resolution range)	95.3 (41.55-1.45) 95.4 (41.52-1.45)	Depositor EDS
R_{merge}	0.07	Depositor
R_{sym}	(Not available)	Depositor
$\langle I/\sigma(I) \rangle$ ¹	2.25 (at 1.45Å)	Xtrriage
Refinement program	REFMAC 5.7.0029	Depositor
R, R_{free}	0.126 , 0.178 0.126 , 0.179	Depositor DCC
R_{free} test set	2790 reflections (5.02%)	wwPDB-VP
Wilson B-factor (Å ²)	10.0	Xtrriage
Anisotropy	0.445	Xtrriage
Bulk solvent k_{sol} (e/Å ³), B_{sol} (Å ²)	0.40 , 55.5	EDS
L-test for twinning ²	$\langle L \rangle = 0.48$, $\langle L^2 \rangle = 0.31$	Xtrriage
Estimated twinning fraction	No twinning to report.	Xtrriage
F_o, F_c correlation	0.98	EDS
Total number of atoms	2623	wwPDB-VP
Average B, all atoms (Å ²)	16.0	wwPDB-VP

Xtrriage's analysis on translational NCS is as follows: *The largest off-origin peak in the Patterson function is 6.48% of the height of the origin peak. No significant pseudotranslation is detected.*

¹Intensities estimated from amplitudes.

²Theoretical values of $\langle |L| \rangle$, $\langle L^2 \rangle$ for acentric reflections are 0.5, 0.333 respectively for untwinned datasets, and 0.375, 0.2 for perfectly twinned datasets.

5 Model quality [i](#)

5.1 Standard geometry [i](#)

Bond lengths and bond angles in the following residue types are not validated in this section: NHE, GOL, CA, BGC

The Z score for a bond length (or angle) is the number of standard deviations the observed value is removed from the expected value. A bond length (or angle) with $|Z| > 5$ is considered an outlier worth inspection. RMSZ is the root-mean-square of all Z scores of the bond lengths (or angles).

Mol	Chain	Bond lengths		Bond angles	
		RMSZ	# Z >5	RMSZ	# Z >5
1	A	1.21	5/2310 (0.2%)	1.02	5/3169 (0.2%)

All (5) bond length outliers are listed below:

Mol	Chain	Res	Type	Atoms	Z	Observed(Å)	Ideal(Å)
1	A	135	TRP	CB-CG	5.92	1.60	1.50
1	A	125	TYR	CE1-CZ	5.56	1.45	1.38
1	A	186	TRP	CE3-CZ3	5.49	1.47	1.38
1	A	212	SER	CA-CB	5.46	1.61	1.52
1	A	163	TYR	CG-CD1	5.37	1.46	1.39

All (5) bond angle outliers are listed below:

Mol	Chain	Res	Type	Atoms	Z	Observed(°)	Ideal(°)
1	A	183	ARG	NE-CZ-NH2	-8.85	115.87	120.30
1	A	116	ARG	NE-CZ-NH1	-6.51	117.05	120.30
1	A	213[A]	LYS	CD-CE-NZ	5.67	124.75	111.70
1	A	213[B]	LYS	CD-CE-NZ	5.67	124.75	111.70
1	A	130	TYR	CB-CG-CD1	-5.15	117.91	121.00

There are no chirality outliers.

There are no planarity outliers.

5.2 Too-close contacts [i](#)

In the following table, the Non-H and H(model) columns list the number of non-hydrogen atoms and hydrogen atoms in the chain respectively. The H(added) column lists the number of hydrogen atoms added and optimized by MolProbity. The Clashes column lists the number of clashes within the asymmetric unit, whereas Symm-Clashes lists symmetry related clashes.

Mol	Chain	Non-H	H(model)	H(added)	Clashes	Symm-Clashes
1	A	2241	0	2168	14	0
2	B	23	0	21	0	0
3	A	2	0	0	0	0
4	A	52	0	65	7	0
5	A	12	0	12	3	0
6	A	48	0	64	5	0
7	A	245	0	0	6	0
All	All	2623	0	2330	21	0

The all-atom clashscore is defined as the number of clashes found per 1000 atoms (including hydrogen atoms). The all-atom clashscore for this structure is 4.

All (21) close contacts within the same asymmetric unit are listed below, sorted by their clash magnitude.

Atom-1	Atom-2	Interatomic distance (Å)	Clash overlap (Å)
1:A:307[B]:ASN:OD1	7:A:585:HOH:O	1.69	1.10
4:A:404:NHE:O2	7:A:707:HOH:O	1.72	1.08
4:A:406:NHE:HC22	7:A:716:HOH:O	1.53	1.06
1:A:50:LYS:HE3	7:A:738:HOH:O	1.60	0.98
4:A:405:NHE:H3'1	7:A:652:HOH:O	1.62	0.98
1:A:97:TYR:CE1	4:A:406:NHE:H4'1	2.26	0.70
5:A:407:BGC:O1	6:A:417:GOL:O2	2.25	0.54
5:A:407:BGC:O4	6:A:415:GOL:H12	2.07	0.54
1:A:155[B]:THR:OG1	1:A:313:LEU:O	2.28	0.52
1:A:81:ILE:HG22	1:A:83:LEU:HG	1.92	0.51
5:A:407:BGC:O4	6:A:415:GOL:H2	2.11	0.51
1:A:249:LYS:HE2	7:A:580:HOH:O	2.11	0.50
1:A:136:ASN:HD22	6:A:417:GOL:C1	2.29	0.45
1:A:211:GLY:HA3	1:A:237:ALA:HB2	1.99	0.45
1:A:181:LEU:HA	1:A:281:TYR:O	2.16	0.45
4:A:406:NHE:H6'1	4:A:406:NHE:HC11	1.70	0.45
1:A:128:ILE:CD1	4:A:406:NHE:H4'2	2.46	0.45
1:A:151:VAL:CG2	1:A:278:THR:HA	2.47	0.45
1:A:307[A]:ASN:HA	4:A:406:NHE:HN	1.81	0.44
1:A:95[B]:MET:HG2	1:A:106:TYR:HD1	1.82	0.44
1:A:136:ASN:HD22	6:A:417:GOL:H12	1.87	0.40

There are no symmetry-related clashes.

5.3 Torsion angles [i](#)

5.3.1 Protein backbone [i](#)

In the following table, the Percentiles column shows the percent Ramachandran outliers of the chain as a percentile score with respect to all X-ray entries followed by that with respect to entries of similar resolution.

The Analysed column shows the number of residues for which the backbone conformation was analysed, and the total number of residues.

Mol	Chain	Analysed	Favoured	Allowed	Outliers	Percentiles
1	A	278/319 (87%)	271 (98%)	7 (2%)	0	100 100

There are no Ramachandran outliers to report.

5.3.2 Protein sidechains [i](#)

In the following table, the Percentiles column shows the percent sidechain outliers of the chain as a percentile score with respect to all X-ray entries followed by that with respect to entries of similar resolution.

The Analysed column shows the number of residues for which the sidechain conformation was analysed, and the total number of residues.

Mol	Chain	Analysed	Rotameric	Outliers	Percentiles
1	A	245/283 (87%)	243 (99%)	2 (1%)	81 62

All (2) residues with a non-rotameric sidechain are listed below:

Mol	Chain	Res	Type
1	A	58	ASP
1	A	261	TYR

Some sidechains can be flipped to improve hydrogen bonding and reduce clashes. All (1) such sidechains are listed below:

Mol	Chain	Res	Type
1	A	208	GLN

5.3.3 RNA [i](#)

There are no RNA molecules in this entry.

5.4 Non-standard residues in protein, DNA, RNA chains [i](#)

There are no non-standard protein/DNA/RNA residues in this entry.

5.5 Carbohydrates [i](#)

2 monosaccharides are modelled in this entry.

In the following table, the Counts columns list the number of bonds (or angles) for which Mogul statistics could be retrieved, the number of bonds (or angles) that are observed in the model and the number of bonds (or angles) that are defined in the Chemical Component Dictionary. The Link column lists molecule types, if any, to which the group is linked. The Z score for a bond length (or angle) is the number of standard deviations the observed value is removed from the expected value. A bond length (or angle) with $|Z| > 2$ is considered an outlier worth inspection. RMSZ is the root-mean-square of all Z scores of the bond lengths (or angles).

Mol	Type	Chain	Res	Link	Bond lengths			Bond angles		
					Counts	RMSZ	# Z > 2	Counts	RMSZ	# Z > 2
2	BGC	B	1	2	12,12,12	0.87	0	17,17,17	1.72	6 (35%)
2	BGC	B	2	2	11,11,12	1.15	1 (9%)	15,15,17	1.66	3 (20%)

In the following table, the Chirals column lists the number of chiral outliers, the number of chiral centers analysed, the number of these observed in the model and the number defined in the Chemical Component Dictionary. Similar counts are reported in the Torsion and Rings columns. '-' means no outliers of that kind were identified.

Mol	Type	Chain	Res	Link	Chirals	Torsions	Rings
2	BGC	B	1	2	-	0/2/22/22	0/1/1/1
2	BGC	B	2	2	-	0/2/19/22	0/1/1/1

All (1) bond length outliers are listed below:

Mol	Chain	Res	Type	Atoms	Z	Observed(Å)	Ideal(Å)
2	B	2	BGC	O3-C3	2.14	1.48	1.43

All (9) bond angle outliers are listed below:

Mol	Chain	Res	Type	Atoms	Z	Observed(°)	Ideal(°)
2	B	2	BGC	O2-C2-C3	-3.87	102.39	110.14
2	B	1	BGC	O5-C1-C2	-3.14	104.69	110.28
2	B	1	BGC	O5-C5-C4	-2.50	105.16	109.69
2	B	1	BGC	O3-C3-C2	-2.40	104.80	110.35
2	B	2	BGC	O5-C1-C2	-2.31	107.20	110.77
2	B	1	BGC	O2-C2-C3	-2.31	105.00	110.35

Continued on next page...

Continued from previous page...

Mol	Chain	Res	Type	Atoms	Z	Observed(°)	Ideal(°)
2	B	1	BGC	O6-C6-C5	-2.31	103.37	111.29
2	B	1	BGC	O5-C5-C6	2.10	111.66	106.44
2	B	2	BGC	O3-C3-C4	-2.01	105.70	110.35

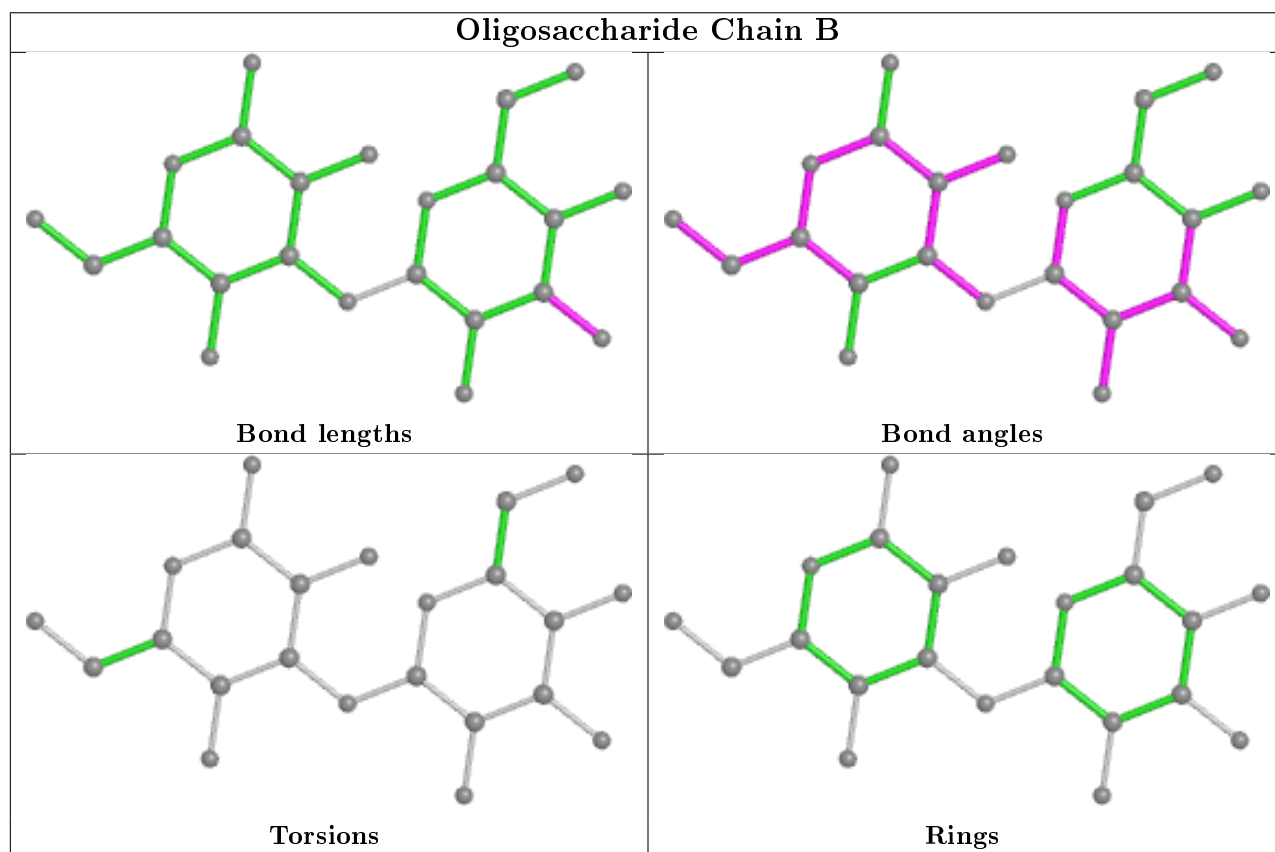
There are no chirality outliers.

There are no torsion outliers.

There are no ring outliers.

No monomer is involved in short contacts.

The following is a two-dimensional graphical depiction of Mogul quality analysis of bond lengths, bond angles, torsion angles, and ring geometry for oligosaccharide.



5.6 Ligand geometry [i](#)

Of 15 ligands modelled in this entry, 2 are monoatomic - leaving 13 for Mogul analysis.

In the following table, the Counts columns list the number of bonds (or angles) for which Mogul statistics could be retrieved, the number of bonds (or angles) that are observed in the model and the number of bonds (or angles) that are defined in the Chemical Component Dictionary. The Link column lists molecule types, if any, to which the group is linked. The Z score for a bond

length (or angle) is the number of standard deviations the observed value is removed from the expected value. A bond length (or angle) with $|Z| > 2$ is considered an outlier worth inspection. RMSZ is the root-mean-square of all Z scores of the bond lengths (or angles).

Mol	Type	Chain	Res	Link	Bond lengths			Bond angles		
					Counts	RMSZ	# Z > 2	Counts	RMSZ	# Z > 2
6	GOL	A	410	-	5,5,5	0.80	0	5,5,5	0.50	0
6	GOL	A	414	-	5,5,5	0.21	0	5,5,5	0.55	0
4	NHE	A	406	-	13,13,13	2.17	2 (15%)	16,17,17	2.57	6 (37%)
4	NHE	A	403	-	13,13,13	2.44	3 (23%)	16,17,17	2.79	7 (43%)
6	GOL	A	411	-	5,5,5	0.53	0	5,5,5	1.57	1 (20%)
6	GOL	A	416	-	5,5,5	0.60	0	5,5,5	0.96	0
6	GOL	A	412	-	5,5,5	0.33	0	5,5,5	0.68	0
6	GOL	A	415	-	5,5,5	0.98	0	5,5,5	1.39	1 (20%)
5	BGC	A	407	-	12,12,12	0.94	0	17,17,17	2.23	6 (35%)
4	NHE	A	404	-	13,13,13	2.95	2 (15%)	16,17,17	3.33	9 (56%)
6	GOL	A	413	-	5,5,5	0.45	0	5,5,5	0.91	0
4	NHE	A	405	-	13,13,13	2.54	2 (15%)	16,17,17	3.65	5 (31%)
6	GOL	A	417	-	5,5,5	0.44	0	5,5,5	0.27	0

In the following table, the Chirals column lists the number of chiral outliers, the number of chiral centers analysed, the number of these observed in the model and the number defined in the Chemical Component Dictionary. Similar counts are reported in the Torsion and Rings columns. '-' means no outliers of that kind were identified.

Mol	Type	Chain	Res	Link	Chirals	Torsions	Rings
6	GOL	A	410	-	-	0/4/4/4	-
6	GOL	A	414	-	-	2/4/4/4	-
4	NHE	A	406	-	-	4/7/15/15	0/1/1/1
4	NHE	A	403	-	-	1/7/15/15	0/1/1/1
6	GOL	A	411	-	-	4/4/4/4	-
6	GOL	A	416	-	-	0/4/4/4	-
6	GOL	A	412	-	-	4/4/4/4	-
6	GOL	A	415	-	-	3/4/4/4	-
5	BGC	A	407	-	-	2/2/22/22	0/1/1/1
4	NHE	A	404	-	-	3/7/15/15	0/1/1/1
6	GOL	A	413	-	-	2/4/4/4	-
4	NHE	A	405	-	-	5/7/15/15	0/1/1/1
6	GOL	A	417	-	-	4/4/4/4	-

All (9) bond length outliers are listed below:

Mol	Chain	Res	Type	Atoms	Z	Observed(Å)	Ideal(Å)
4	A	404	NHE	C2-S	-8.10	1.66	1.77
4	A	404	NHE	O1-S	6.63	1.64	1.45
4	A	405	NHE	O1-S	6.60	1.64	1.45
4	A	403	NHE	O2-S	6.22	1.63	1.45
4	A	406	NHE	C2-S	-5.90	1.69	1.77
4	A	405	NHE	C2-S	-5.70	1.69	1.77
4	A	403	NHE	C2-S	-5.30	1.70	1.77
4	A	406	NHE	O3-S	4.83	1.64	1.47
4	A	403	NHE	O1-S	-2.25	1.38	1.45

All (35) bond angle outliers are listed below:

Mol	Chain	Res	Type	Atoms	Z	Observed(°)	Ideal(°)
4	A	405	NHE	O2-S-C2	11.27	120.49	106.92
4	A	404	NHE	C1-N-C1'	6.77	127.44	114.14
4	A	404	NHE	C5'-C6'-C1'	6.53	123.39	111.11
4	A	406	NHE	O1-S-C2	6.25	114.44	106.92
4	A	405	NHE	C1-N-C1'	6.13	126.17	114.14
4	A	403	NHE	C1-N-C1'	5.60	125.13	114.14
4	A	404	NHE	C3'-C2'-C1'	5.49	121.44	111.11
4	A	403	NHE	C4'-C5'-C6'	5.36	122.33	111.42
5	A	407	BGC	C6-C5-C4	5.17	125.11	113.00
4	A	405	NHE	C4'-C3'-C2'	5.05	121.71	111.42
4	A	406	NHE	C6'-C1'-C2'	-4.91	102.30	110.82
4	A	403	NHE	C3'-C2'-C1'	4.48	119.55	111.11
4	A	403	NHE	C4'-C3'-C2'	4.17	119.92	111.42
4	A	404	NHE	C4'-C3'-C2'	4.06	119.70	111.42
5	A	407	BGC	O1-C1-O5	-3.98	98.44	110.38
5	A	407	BGC	C4-C3-C2	-3.73	104.31	110.82
4	A	404	NHE	C4'-C5'-C6'	3.47	118.49	111.42
4	A	406	NHE	C5'-C6'-C1'	-3.42	104.68	111.11
4	A	403	NHE	C5'-C6'-C1'	3.32	117.35	111.11
5	A	407	BGC	C1-O5-C5	-3.07	107.87	113.66
6	A	415	GOL	O2-C2-C1	-2.91	96.29	109.12
5	A	407	BGC	O5-C5-C4	-2.83	104.55	109.69
4	A	404	NHE	O2-S-C2	2.65	110.11	106.92
4	A	404	NHE	O1-S-C2	2.50	109.92	106.92
4	A	406	NHE	O3-S-O2	-2.39	105.44	111.27
4	A	405	NHE	O2-S-O1	-2.28	106.05	113.95
4	A	404	NHE	C2'-C1'-N	2.27	120.28	110.57
5	A	407	BGC	O2-C2-C1	2.24	114.36	109.16
4	A	403	NHE	O2-S-O1	-2.18	106.42	113.95
4	A	403	NHE	O3-S-C2	2.15	109.25	105.77

Continued on next page...

Continued from previous page...

Mol	Chain	Res	Type	Atoms	Z	Observed(°)	Ideal(°)
6	A	411	GOL	O1-C1-C2	-2.10	100.13	110.20
4	A	404	NHE	O3-S-C2	2.07	109.12	105.77
4	A	406	NHE	O2-S-O1	-2.07	106.80	113.95
4	A	406	NHE	C2-C1-N	2.06	117.10	111.25
4	A	405	NHE	C2'-C1'-N	2.03	119.27	110.57

There are no chirality outliers.

All (34) torsion outliers are listed below:

Mol	Chain	Res	Type	Atoms
6	A	414	GOL	C1-C2-C3-O3
4	A	406	NHE	N-C1-C2-S
4	A	406	NHE	C1-C2-S-O1
4	A	406	NHE	C1-C2-S-O2
4	A	406	NHE	C1-C2-S-O3
4	A	403	NHE	C6'-C1'-N-C1
6	A	411	GOL	C1-C2-C3-O3
6	A	411	GOL	O2-C2-C3-O3
6	A	412	GOL	C1-C2-C3-O3
6	A	415	GOL	O1-C1-C2-C3
4	A	404	NHE	C2'-C1'-N-C1
6	A	413	GOL	O1-C1-C2-C3
4	A	405	NHE	C2'-C1'-N-C1
4	A	405	NHE	N-C1-C2-S
6	A	417	GOL	C1-C2-C3-O3
5	A	407	BGC	C4-C5-C6-O6
5	A	407	BGC	O5-C5-C6-O6
6	A	411	GOL	O1-C1-C2-C3
6	A	412	GOL	O1-C1-C2-C3
6	A	415	GOL	C1-C2-C3-O3
6	A	417	GOL	O1-C1-C2-C3
4	A	405	NHE	C2-C1-N-C1'
6	A	412	GOL	O2-C2-C3-O3
6	A	415	GOL	O1-C1-C2-O2
6	A	413	GOL	O1-C1-C2-O2
6	A	417	GOL	O2-C2-C3-O3
4	A	404	NHE	C6'-C1'-N-C1
6	A	414	GOL	O2-C2-C3-O3
6	A	411	GOL	O1-C1-C2-O2
6	A	417	GOL	O1-C1-C2-O2
4	A	404	NHE	N-C1-C2-S
6	A	412	GOL	O1-C1-C2-O2

Continued on next page...

Continued from previous page...

Mol	Chain	Res	Type	Atoms
4	A	405	NHE	C6'-C1'-N-C1
4	A	405	NHE	C1-C2-S-O1

There are no ring outliers.

6 monomers are involved in 12 short contacts:

Mol	Chain	Res	Type	Clashes	Symm-Clashes
4	A	406	NHE	5	0
6	A	415	GOL	2	0
5	A	407	BGC	3	0
4	A	404	NHE	1	0
4	A	405	NHE	1	0
6	A	417	GOL	3	0

5.7 Other polymers [i](#)

There are no such residues in this entry.

5.8 Polymer linkage issues [i](#)

There are no chain breaks in this entry.

6 Fit of model and data [i](#)

6.1 Protein, DNA and RNA chains [i](#)

In the following table, the column labelled '#RSRZ > 2' contains the number (and percentage) of RSRZ outliers, followed by percent RSRZ outliers for the chain as percentile scores relative to all X-ray entries and entries of similar resolution. The OWAB column contains the minimum, median, 95th percentile and maximum values of the occupancy-weighted average B-factor per residue. The column labelled 'Q < 0.9' lists the number of (and percentage) of residues with an average occupancy less than 0.9.

Mol	Chain	Analysed	<RSRZ>	#RSRZ>2	OWAB(Å ²)	Q<0.9
1	A	270/319 (84%)	-0.86	2 (0%) 87 89	7, 12, 23, 46	0

All (2) RSRZ outliers are listed below:

Mol	Chain	Res	Type	RSRZ
1	A	314	ASP	2.4
1	A	319	SER	2.1

6.2 Non-standard residues in protein, DNA, RNA chains [i](#)

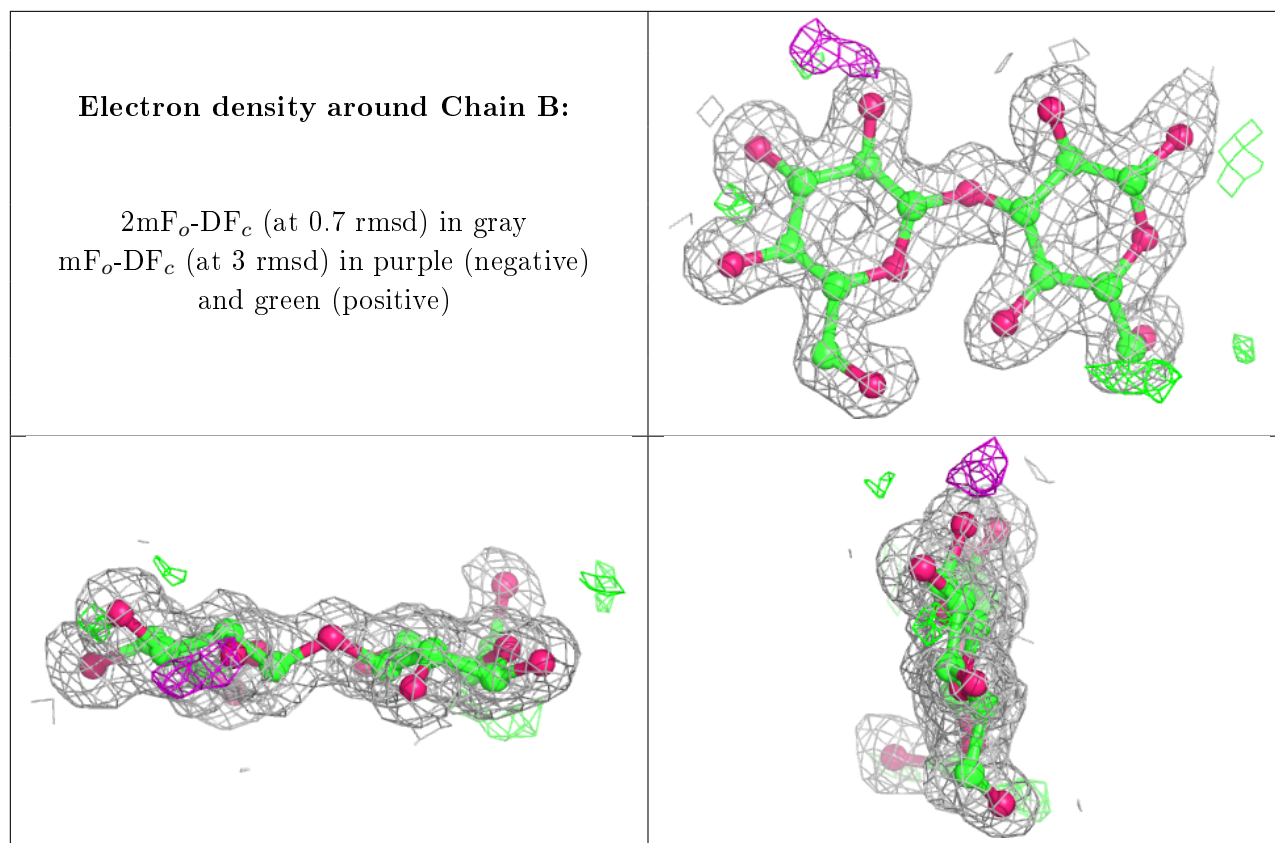
There are no non-standard protein/DNA/RNA residues in this entry.

6.3 Carbohydrates [i](#)

In the following table, the Atoms column lists the number of modelled atoms in the group and the number defined in the chemical component dictionary. The B-factors column lists the minimum, median, 95th percentile and maximum values of B factors of atoms in the group. The column labelled 'Q < 0.9' lists the number of atoms with occupancy less than 0.9.

Mol	Type	Chain	Res	Atoms	RSCC	RSR	B-factors(Å ²)	Q<0.9
2	BGC	B	1	12/12	0.96	0.05	17,20,28,36	12
2	BGC	B	2	11/12	0.97	0.06	12,16,23,23	0

The following is a graphical depiction of the model fit to experimental electron density for oligosaccharide. Each fit is shown from different orientation to approximate a three-dimensional view.



6.4 Ligands [\(i\)](#)

In the following table, the Atoms column lists the number of modelled atoms in the group and the number defined in the chemical component dictionary. The B-factors column lists the minimum, median, 95th percentile and maximum values of B factors of atoms in the group. The column labelled 'Q< 0.9' lists the number of atoms with occupancy less than 0.9.

Mol	Type	Chain	Res	Atoms	RSCC	RSR	B-factors(Å ²)	Q<0.9
6	GOL	A	412	6/6	0.78	0.15	54,63,71,87	0
4	NHE	A	406	13/13	0.79	0.19	19,22,78,90	13
6	GOL	A	411	6/6	0.91	0.11	22,30,36,36	6
4	NHE	A	404	13/13	0.92	0.11	15,24,79,84	13
6	GOL	A	414	6/6	0.93	0.07	40,43,59,67	0
6	GOL	A	417	6/6	0.93	0.08	33,45,53,60	6
6	GOL	A	416	6/6	0.94	0.09	16,25,28,29	6
5	BGC	A	407	12/12	0.95	0.11	10,22,35,37	12
6	GOL	A	413	6/6	0.96	0.06	27,32,39,49	6
4	NHE	A	405	13/13	0.96	0.11	20,25,29,46	13
6	GOL	A	415	6/6	0.96	0.11	11,23,37,43	6
4	NHE	A	403	13/13	0.97	0.07	21,24,34,40	13
6	GOL	A	410	6/6	0.98	0.06	14,23,35,45	6
3	CA	A	402	1/1	1.00	0.03	13,13,13,13	1

Continued on next page...

Continued from previous page...

Mol	Type	Chain	Res	Atoms	RSCC	RSR	B-factors(\AA^2)	Q<0.9
3	CA	A	401	1/1	1.00	0.02	14,14,14,14	1

6.5 Other polymers [i](#)

There are no such residues in this entry.