



## Full wwPDB EM Validation Report ⓘ

Apr 8, 2024 – 05:07 PM JST

PDB ID : 8WYF  
EMDB ID : EMD-37926  
Title : Cryo-EM structure of DSR2-DSAD1-NAD<sup>+</sup> (partial) complex  
Authors : Zhang, J.T.; Jia, N.; Liu, X.Y.  
Deposited on : 2023-10-30  
Resolution : 2.85 Å (reported)

This is a Full wwPDB EM Validation Report for a publicly released PDB entry.

We welcome your comments at [validation@mail.wwpdb.org](mailto:validation@mail.wwpdb.org)

A user guide is available at

<https://www.wwpdb.org/validation/2017/EMValidationReportHelp>

with specific help available everywhere you see the ⓘ symbol.

The types of validation reports are described at

<http://www.wwpdb.org/validation/2017/FAQs#types>.

---

The following versions of software and data (see [references ⓘ](#)) were used in the production of this report:

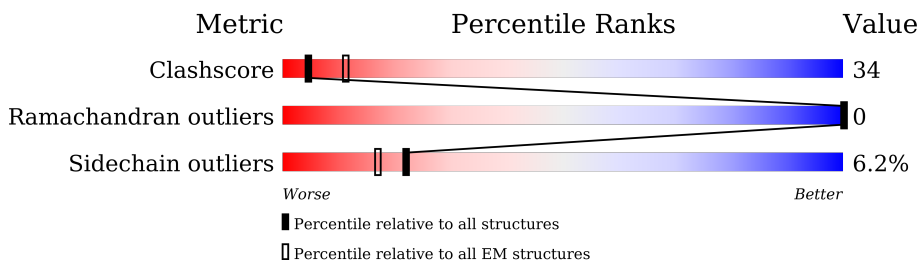
EMDB validation analysis : 0.0.1.dev70  
Mogul : 1.8.5 (274361), CSD as541be (2020)  
MolProbity : 4.02b-467  
buster-report : 1.1.7 (2018)  
Percentile statistics : 20191225.v01 (using entries in the PDB archive December 25th 2019)  
MapQ : 1.9.13  
Ideal geometry (proteins) : Engh & Huber (2001)  
Ideal geometry (DNA, RNA) : Parkinson et al. (1996)  
Validation Pipeline (wwPDB-VP) : 2.36

# 1 Overall quality at a glance

The following experimental techniques were used to determine the structure:  
*ELECTRON MICROSCOPY*

The reported resolution of this entry is 2.85 Å.

Percentile scores (ranging between 0-100) for global validation metrics of the entry are shown in the following graphic. The table shows the number of entries on which the scores are based.



Metric	Whole archive (#Entries)	EM structures (#Entries)
Clashscore	158937	4297
Ramachandran outliers	154571	4023
Sidechain outliers	154315	3826

The table below summarises the geometric issues observed across the polymeric chains and their fit to the map. The red, orange, yellow and green segments of the bar indicate the fraction of residues that contain outliers for  $\geq 3$ , 2, 1 and 0 types of geometric quality criteria respectively. A grey segment represents the fraction of residues that are not modelled. The numeric value for each fraction is indicated below the corresponding segment, with a dot representing fractions  $\leq 5\%$ . The upper red bar (where present) indicates the fraction of residues that have poor fit to the EM map (all-atom inclusion  $< 40\%$ ). The numeric value is given above the bar.

Mol	Chain	Length	Quality of chain
1	A	1005	
1	B	1005	
1	C	1005	
1	D	1005	
2	E	146	

The following table lists non-polymeric compounds, carbohydrate monomers and non-standard residues in protein, DNA, RNA chains that are outliers for geometric or electron-density-fit criteria:

Mol	Type	Chain	Res	Chirality	Geometry	Clashes	Electron density
3	NAD	A	1101	-	-	X	-

## 2 Entry composition i

There are 3 unique types of molecules in this entry. The entry contains 21408 atoms, of which 0 are hydrogens and 0 are deuteriums.

In the tables below, the AltConf column contains the number of residues with at least one atom in alternate conformation and the Trace column contains the number of residues modelled with at most 2 atoms.

- Molecule 1 is a protein called SIR2 family protein.

Mol	Chain	Residues	Atoms					AltConf	Trace
			Total	C	N	O	S		
1	A	945	7895	5115	1275	1474	31	0	0
1	B	953	7966	5162	1288	1486	30	0	0
1	C	271	2219	1429	360	423	7	0	0
1	D	268	2195	1417	355	416	7	0	0

- Molecule 2 is a protein called Bacillus phage SPbeta DSAD1 protein.

Mol	Chain	Residues	Atoms					AltConf	Trace
			Total	C	N	O	S		
2	E	116	957	625	154	175	3	0	0

There are 26 discrepancies between the modelled and reference sequences:

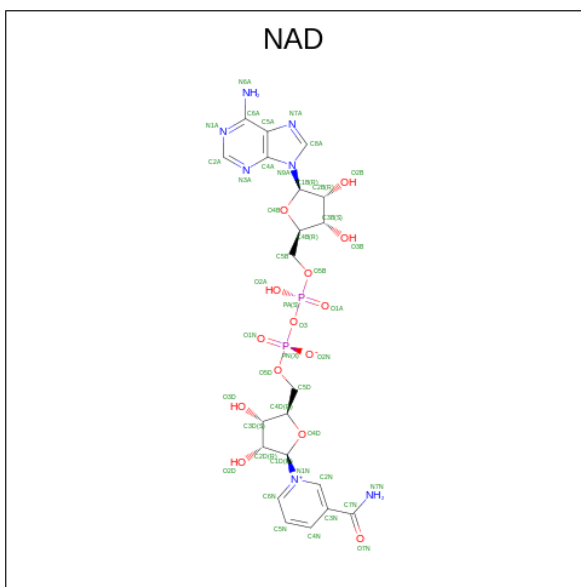
Chain	Residue	Modelled	Actual	Comment	Reference
E	121	TRP	-	expression tag	UNP O64191
E	122	SER	-	expression tag	UNP O64191
E	123	HIS	-	expression tag	UNP O64191
E	124	PRO	-	expression tag	UNP O64191
E	125	GLN	-	expression tag	UNP O64191
E	126	PHE	-	expression tag	UNP O64191
E	127	GLU	-	expression tag	UNP O64191
E	128	LYS	-	expression tag	UNP O64191
E	129	GLY	-	expression tag	UNP O64191
E	130	GLY	-	expression tag	UNP O64191
E	131	GLY	-	expression tag	UNP O64191
E	132	SER	-	expression tag	UNP O64191
E	133	GLY	-	expression tag	UNP O64191
E	134	GLY	-	expression tag	UNP O64191
E	135	GLY	-	expression tag	UNP O64191

*Continued on next page...*

Continued from previous page...

Chain	Residue	Modelled	Actual	Comment	Reference
E	136	SER	-	expression tag	UNP O64191
E	137	GLY	-	expression tag	UNP O64191
E	138	GLY	-	expression tag	UNP O64191
E	139	TRP	-	expression tag	UNP O64191
E	140	SER	-	expression tag	UNP O64191
E	141	HIS	-	expression tag	UNP O64191
E	142	PRO	-	expression tag	UNP O64191
E	143	GLN	-	expression tag	UNP O64191
E	144	PHE	-	expression tag	UNP O64191
E	145	GLU	-	expression tag	UNP O64191
E	146	LYS	-	expression tag	UNP O64191

- Molecule 3 is NICOTINAMIDE-ADENINE-DINUCLEOTIDE (three-letter code: NAD) (formula:  $C_{21}H_{27}N_7O_{14}P_2$ ) (labeled as "Ligand of Interest" by depositor).

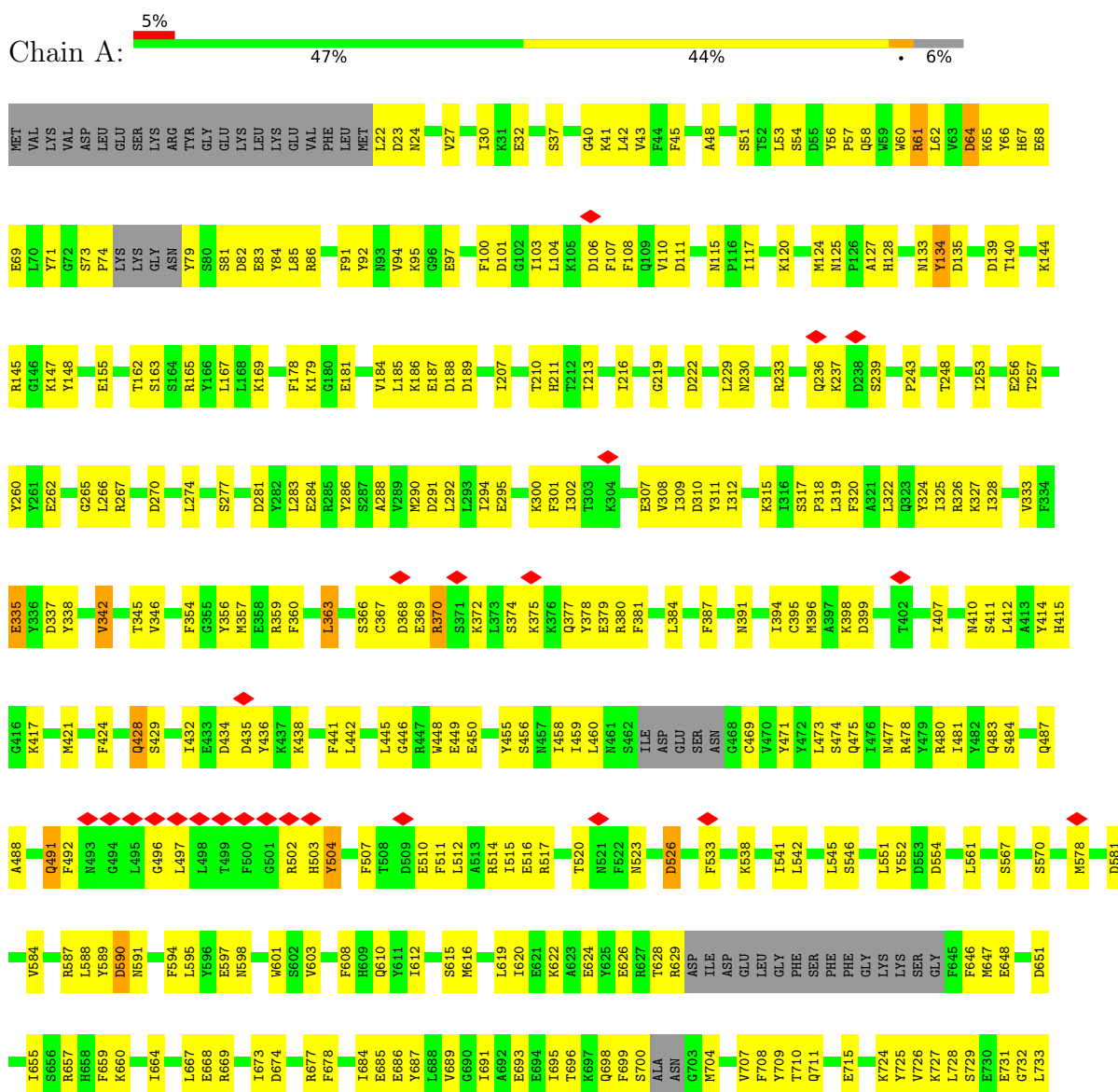


Mol	Chain	Residues	Atoms				AltConf	
			Total	C	N	O		P
3	A	1	44	21	7	14	2	0
3	B	1	44	21	7	14	2	0
3	C	1	44	21	7	14	2	0
3	D	1	44	21	7	14	2	0

### 3 Residue-property plots [i](#)

These plots are drawn for all protein, RNA, DNA and oligosaccharide chains in the entry. The first graphic for a chain summarises the proportions of the various outlier classes displayed in the second graphic. The second graphic shows the sequence view annotated by issues in geometry and atom inclusion in map density. Residues are color-coded according to the number of geometric quality criteria for which they contain at least one outlier: green = 0, yellow = 1, orange = 2 and red = 3 or more. A red diamond above a residue indicates a poor fit to the EM map for this residue (all-atom inclusion < 40%). Stretches of 2 or more consecutive residues without any outlier are shown as a green connector. Residues present in the sample, but not in the model, are shown in grey.

- Molecule 1: SIR2 family protein













## 4 Experimental information

Property	Value	Source
EM reconstruction method	SINGLE PARTICLE	Depositor
Imposed symmetry	POINT, Not provided	
Number of particles used	230498	Depositor
Resolution determination method	FSC 0.143 CUT-OFF	Depositor
CTF correction method	PHASE FLIPPING ONLY	Depositor
Microscope	FEI TITAN KRIOS	Depositor
Voltage (kV)	300	Depositor
Electron dose ( $e^-/\text{\AA}^2$ )	50	Depositor
Minimum defocus (nm)	1500	Depositor
Maximum defocus (nm)	2500	Depositor
Magnification	Not provided	
Image detector	GATAN K3 (6k x 4k)	Depositor
Maximum map value	3.724	Depositor
Minimum map value	-2.051	Depositor
Average map value	-0.000	Depositor
Map value standard deviation	0.077	Depositor
Recommended contour level	0.5	Depositor
Map size ( $\text{\AA}$ )	446.58002, 446.58002, 446.58002	wwPDB
Map dimensions	540, 540, 540	wwPDB
Map angles ( $^\circ$ )	90.0, 90.0, 90.0	wwPDB
Pixel spacing ( $\text{\AA}$ )	0.827, 0.827, 0.827	Depositor

## 5 Model quality [i](#)

### 5.1 Standard geometry [i](#)

Bond lengths and bond angles in the following residue types are not validated in this section: NAD

The Z score for a bond length (or angle) is the number of standard deviations the observed value is removed from the expected value. A bond length (or angle) with  $|Z| > 5$  is considered an outlier worth inspection. RMSZ is the root-mean-square of all Z scores of the bond lengths (or angles).

Mol	Chain	Bond lengths		Bond angles	
		RMSZ	# Z  >5	RMSZ	# Z  >5
1	A	0.27	0/8078	0.42	0/10881
1	B	0.27	0/8148	0.42	0/10973
1	C	0.26	0/2273	0.45	0/3082
1	D	0.26	0/2249	0.43	0/3049
2	E	0.26	0/983	0.44	0/1333
All	All	0.27	0/21731	0.43	0/29318

There are no bond length outliers.

There are no bond angle outliers.

There are no chirality outliers.

There are no planarity outliers.

### 5.2 Too-close contacts [i](#)

In the following table, the Non-H and H(model) columns list the number of non-hydrogen atoms and hydrogen atoms in the chain respectively. The H(added) column lists the number of hydrogen atoms added and optimized by MolProbity. The Clashes column lists the number of clashes within the asymmetric unit, whereas Symm-Clashes lists symmetry-related clashes.

Mol	Chain	Non-H	H(model)	H(added)	Clashes	Symm-Clashes
1	A	7895	0	7731	499	0
1	B	7966	0	7811	520	0
1	C	2219	0	2155	184	0
1	D	2195	0	2139	188	0
2	E	957	0	942	91	0
3	A	44	0	26	22	0
3	B	44	0	26	20	0
3	C	44	0	26	5	0

*Continued on next page...*

*Continued from previous page...*

Mol	Chain	Non-H	H(model)	H(added)	Clashes	Symm-Clashes
3	D	44	0	26	5	0
All	All	21408	0	20882	1451	0

The all-atom clashscore is defined as the number of clashes found per 1000 atoms (including hydrogen atoms). The all-atom clashscore for this structure is 34.

All (1451) close contacts within the same asymmetric unit are listed below, sorted by their clash magnitude.

Atom-1	Atom-2	Interatomic distance (Å)	Clash overlap (Å)
1:A:60:TRP:CZ3	3:A:1101:NAD:H5N	1.79	1.17
1:B:363:LEU:HD11	1:B:373:LEU:HD11	1.25	1.14
1:B:827:LEU:HD13	1:B:835:ILE:HG13	1.33	1.10
1:B:60:TRP:CE3	3:B:1101:NAD:H5N	1.86	1.09
1:B:60:TRP:CE3	3:B:1101:NAD:C5N	2.38	1.06
1:A:60:TRP:CH2	3:A:1101:NAD:H5N	1.91	1.05
1:B:375:LYS:HE2	1:B:375:LYS:HA	1.33	1.05
1:B:60:TRP:CE3	3:B:1101:NAD:H6N	1.93	1.04
1:B:60:TRP:CE3	3:B:1101:NAD:C6N	2.42	1.03
1:A:741:LEU:HA	1:A:754:ARG:HD3	1.41	1.01
1:D:246:ILE:HG12	1:D:269:ILE:HD11	1.39	1.01
1:A:79:TYR:N	3:A:1101:NAD:H72N	1.58	1.00
1:B:60:TRP:CD2	3:B:1101:NAD:C6N	2.44	0.99
1:A:829:GLN:HA	1:A:856:PHE:HZ	1.24	0.98
1:D:151:VAL:HG22	1:D:167:LEU:HD23	1.45	0.96
1:B:60:TRP:HE3	3:B:1101:NAD:H5N	1.21	0.95
1:D:274:LEU:HD23	1:D:275:ILE:HG23	1.51	0.93
1:B:920:TYR:HD2	1:B:944:VAL:HG22	1.30	0.93
1:B:429:SER:HB3	1:B:438:LYS:HE2	1.49	0.92
1:B:64:ASP:OD1	1:B:65:LYS:HD3	1.69	0.92
1:C:33:ILE:HD13	1:C:293:LEU:HD21	1.50	0.92
1:A:322:LEU:HD12	1:A:325:ILE:HD11	1.52	0.92
1:A:827:LEU:HD22	1:A:831:LYS:HE2	1.50	0.92
1:C:110:VAL:HG11	1:C:112:LYS:HE2	1.52	0.91
1:B:89:GLN:NE2	1:B:188:ASP:OD2	2.03	0.91
1:B:777:ASP:OD1	1:B:819:ARG:NH2	2.04	0.91
2:E:77:ASN:OD1	2:E:78:GLU:N	2.04	0.90
1:A:561:LEU:HD12	1:A:584:VAL:HG23	1.53	0.90
1:B:347:VAL:HG12	1:B:397:ALA:HB2	1.54	0.90
1:A:967:LEU:HD22	1:A:1005:ILE:HD13	1.54	0.90
1:B:60:TRP:CD2	3:B:1101:NAD:H6N	2.05	0.89
1:B:65:LYS:HG3	1:B:107:PHE:CE2	2.07	0.89

*Continued on next page...*

*Continued from previous page...*

Atom-1	Atom-2	Interatomic distance (Å)	Clash overlap (Å)
1:A:424:PHE:O	1:A:438:LYS:NZ	2.05	0.87
1:D:53:LEU:HD21	1:D:283:LEU:HD12	1.55	0.87
1:A:94:VAL:HG12	1:A:95:LYS:HD2	1.55	0.86
1:A:60:TRP:CE3	3:A:1101:NAD:C5N	2.58	0.86
1:C:34:THR:HG22	1:C:297:GLN:HB2	1.56	0.86
1:B:322:LEU:HD13	1:B:325:ILE:HD11	1.58	0.86
1:A:360:PHE:HA	1:A:363:LEU:HD12	1.58	0.85
1:A:829:GLN:HA	1:A:856:PHE:CZ	2.11	0.85
1:A:58:GLN:OE1	3:A:1101:NAD:H52N	1.77	0.84
1:A:789:GLN:HE22	1:A:832:GLN:H	1.23	0.84
1:B:37:SER:OG	1:B:124:MET:O	1.95	0.84
1:A:781:LEU:O	1:A:785:LYS:HG2	1.77	0.84
2:E:28:GLU:N	2:E:28:GLU:OE1	2.10	0.84
1:C:120:LYS:HB3	1:C:290:MET:HE2	1.58	0.84
1:A:30:ILE:HD11	1:A:292:LEU:HD21	1.58	0.83
1:A:60:TRP:CE3	3:A:1101:NAD:C4N	2.61	0.83
1:B:120:LYS:NZ	1:B:291:ASP:OD1	2.11	0.83
1:C:60:TRP:HB3	1:C:84:TYR:OH	1.78	0.83
1:A:60:TRP:CD2	3:A:1101:NAD:C5N	2.62	0.83
1:A:740:LEU:O	1:A:754:ARG:NH1	2.10	0.83
2:E:31:ILE:HG22	2:E:83:ILE:HA	1.61	0.83
1:B:884:LEU:HD12	1:B:887:GLU:OE1	1.78	0.83
1:D:242:LYS:HB2	1:D:267:ARG:HD2	1.60	0.83
3:D:1101:NAD:H4D	3:D:1101:NAD:O2N	1.78	0.83
2:E:33:LEU:HD13	2:E:37:LYS:HB3	1.59	0.83
1:A:755:TYR:HD2	1:A:799:LEU:HD13	1.43	0.83
1:A:689:VAL:O	1:A:693:GLU:HG3	1.78	0.82
1:A:886:ILE:O	1:A:890:GLU:HG2	1.79	0.82
1:C:42:LEU:O	1:C:127:ALA:N	2.08	0.82
1:B:222:ASP:OD1	1:B:223:TYR:N	2.12	0.82
1:B:887:GLU:O	1:B:891:THR:HG23	1.78	0.82
1:B:817:SER:OG	1:B:820:LEU:HB2	1.78	0.81
1:C:31:LYS:O	1:C:35:GLU:HG2	1.80	0.81
1:A:685:GLU:OE2	1:A:729:SER:OG	1.97	0.81
1:C:250:PRO:HA	1:C:285:ARG:HH12	1.45	0.81
1:D:68:GLU:HG3	1:D:74:PRO:HD3	1.59	0.81
1:A:165:ARG:HG3	1:A:165:ARG:HH11	1.46	0.81
1:A:930:MET:HB3	1:A:940:TYR:OH	1.81	0.81
1:B:286:TYR:OH	3:B:1101:NAD:O2B	1.99	0.81
1:A:938:ASP:OD1	1:A:953:LYS:HE2	1.80	0.80
1:C:30:ILE:HG23	1:C:293:LEU:HG	1.61	0.80

*Continued on next page...*

*Continued from previous page...*

Atom-1	Atom-2	Interatomic distance (Å)	Clash overlap (Å)
1:A:315:LYS:NZ	1:A:335:GLU:OE2	2.13	0.80
2:E:96:THR:HG22	2:E:100:LEU:HD21	1.63	0.80
1:A:417:LYS:O	1:A:421:MET:HG3	1.82	0.80
1:B:741:LEU:HA	1:B:754:ARG:HD3	1.64	0.80
1:D:36:SER:HB2	1:D:42:LEU:HB2	1.64	0.79
1:A:999:ILE:HG23	1:A:1005:ILE:HD12	1.63	0.79
1:B:476:ILE:HD13	1:B:524:ILE:HD11	1.64	0.79
1:A:291:ASP:O	1:A:295:GLU:HG2	1.81	0.79
1:A:889:LEU:HD22	1:A:933:PHE:CB	2.12	0.79
1:B:689:VAL:O	1:B:693:GLU:HG3	1.82	0.79
1:C:110:VAL:HG13	1:C:112:LYS:HG2	1.63	0.79
1:B:655:ILE:O	1:B:659:PHE:HB2	1.82	0.79
1:A:913:MET:HE2	1:A:936:MET:HB2	1.63	0.78
1:B:60:TRP:CD2	3:B:1101:NAD:C5N	2.67	0.78
3:C:1101:NAD:H8A	3:C:1101:NAD:H3B	1.63	0.78
1:D:173:ASP:OD2	1:D:175:ARG:HD3	1.82	0.78
1:B:60:TRP:HB2	3:B:1101:NAD:C5N	2.14	0.78
1:A:407:ILE:HG21	1:A:589:TYR:CG	2.18	0.78
1:A:32:GLU:OE1	1:A:267:ARG:NH1	2.15	0.78
1:B:94:VAL:HG12	1:B:95:LYS:HD3	1.65	0.78
2:E:52:ARG:NH1	2:E:54:ASN:HA	1.99	0.78
1:B:101:ASP:OD1	1:B:180:GLY:N	2.16	0.78
1:A:959:LEU:HD13	1:A:984:LEU:HD21	1.64	0.78
1:A:370:ARG:HB3	1:A:378:TYR:HE1	1.49	0.78
1:B:936:MET:SD	1:B:936:MET:N	2.55	0.78
1:D:34:THR:CG2	1:D:297:GLN:HA	2.14	0.78
1:A:60:TRP:CE3	3:A:1101:NAD:H5N	2.17	0.77
1:B:32:GLU:OE2	1:B:267:ARG:NH2	2.16	0.77
1:A:60:TRP:CD2	3:A:1101:NAD:C4N	2.66	0.77
1:A:455:TYR:O	1:A:459:ILE:HG12	1.84	0.77
1:B:472:TYR:OH	1:B:546:SER:OG	2.02	0.77
1:A:324:TYR:OH	1:A:590:ASP:OD1	2.00	0.77
1:A:79:TYR:N	3:A:1101:NAD:N7N	2.33	0.77
1:A:322:LEU:HD11	1:A:542:LEU:HD21	1.64	0.77
1:A:60:TRP:CZ3	3:A:1101:NAD:C5N	2.63	0.77
1:A:881:HIS:HA	1:A:884:LEU:HD12	1.67	0.77
2:E:103:SER:HA	2:E:111:PRO:HG2	1.67	0.77
1:A:588:LEU:HD11	1:A:612:ILE:HG23	1.67	0.76
1:B:842:LEU:HD12	1:B:853:LEU:HD23	1.66	0.76
1:A:101:ASP:OD1	1:A:179:LYS:HA	1.84	0.76
1:A:140:THR:HG22	1:A:144:LYS:HE3	1.66	0.76

*Continued on next page...*

*Continued from previous page...*

Atom-1	Atom-2	Interatomic distance (Å)	Clash overlap (Å)
1:A:436:TYR:OH	1:A:473:LEU:HB3	1.85	0.76
1:B:65:LYS:HG3	1:B:107:PHE:HE2	1.49	0.76
1:B:980:VAL:HG21	1:B:1005:ILE:HG22	1.66	0.76
1:D:253:ILE:HG22	1:D:270:ASP:OD2	1.85	0.76
1:B:829:GLN:HA	1:B:856:PHE:HE2	1.50	0.76
2:E:99:VAL:HG22	2:E:112:ILE:HD12	1.68	0.76
1:A:144:LYS:HA	1:B:460:LEU:HD21	1.68	0.76
1:B:1003:TYR:HB2	1:B:1005:ILE:HG13	1.68	0.76
1:A:367:CYS:HA	1:A:370:ARG:HE	1.50	0.75
1:B:14:LYS:HA	1:B:17:GLU:HG2	1.67	0.75
1:B:233:ARG:HH22	1:D:191:LEU:HD13	1.51	0.75
1:B:756:VAL:HG21	1:B:797:ASN:HD22	1.50	0.75
1:B:933:PHE:HB3	1:B:940:TYR:CE2	2.21	0.75
1:B:881:HIS:O	1:B:885:ILE:HD12	1.86	0.75
1:A:893:LYS:O	1:A:893:LYS:NZ	2.19	0.75
1:C:26:VAL:O	1:C:30:ILE:HG13	1.87	0.75
1:C:43:VAL:HG13	1:C:213:ILE:HD13	1.69	0.75
1:C:105:LYS:O	1:C:109:GLN:HG3	1.87	0.75
1:A:804:TYR:O	1:A:808:ILE:HG13	1.86	0.75
1:A:980:VAL:HG23	1:A:1005:ILE:O	1.84	0.75
1:B:319:LEU:HD11	1:B:333:VAL:HG21	1.68	0.75
1:B:866:MET:HA	1:B:866:MET:CE	2.17	0.75
1:C:53:LEU:HD11	1:C:286:TYR:CG	2.22	0.74
1:A:999:ILE:CG2	1:A:1005:ILE:HD12	2.17	0.74
1:B:755:TYR:HB2	1:B:804:TYR:CZ	2.21	0.74
1:D:90:ILE:O	1:D:94:VAL:HG22	1.88	0.74
2:E:20:ILE:O	2:E:22:THR:HG22	1.87	0.74
1:A:805:GLY:HA3	1:A:844:LEU:HD11	1.69	0.74
1:C:30:ILE:HA	1:C:33:ILE:HD12	1.70	0.74
1:C:150:SER:HB2	1:C:163:SER:HB3	1.70	0.74
1:A:800:TYR:N	1:A:803:ASP:OD2	2.20	0.74
1:B:975:HIS:O	1:B:976:MET:HG2	1.88	0.74
1:D:117:ILE:CD1	1:D:286:TYR:HB3	2.17	0.74
1:B:673:ILE:HA	1:B:676:ILE:HD12	1.69	0.73
1:A:480:ARG:NH2	1:A:546:SER:O	2.21	0.73
1:D:29:CYS:O	1:D:33:ILE:HG13	1.87	0.73
1:D:117:ILE:HD11	1:D:286:TYR:HB3	1.69	0.73
1:B:812:GLU:HG2	1:B:815:PHE:HB2	1.69	0.73
1:C:120:LYS:HB3	1:C:290:MET:CE	2.17	0.73
1:A:23:ASP:O	1:A:27:VAL:HG23	1.89	0.73
2:E:41:LYS:HA	2:E:41:LYS:HE2	1.70	0.73

*Continued on next page...*



*Continued from previous page...*

Atom-1	Atom-2	Interatomic distance (Å)	Clash overlap (Å)
1:B:101:ASP:OD1	1:B:179:LYS:HA	1.88	0.73
1:B:751:ILE:O	1:B:804:TYR:OH	2.06	0.73
1:A:60:TRP:CE2	3:A:1101:NAD:C5N	2.71	0.72
1:A:595:LEU:HB3	1:A:603:VAL:HG12	1.69	0.72
1:A:37:SER:OG	1:A:124:MET:O	2.06	0.72
1:A:302:ILE:HG22	1:A:307:GLU:HB3	1.70	0.72
1:A:456:SER:O	1:A:460:LEU:HG	1.88	0.72
1:B:831:LYS:O	1:B:835:ILE:HD12	1.89	0.72
1:A:64:ASP:OD1	1:A:65:LYS:N	2.22	0.72
1:A:655:ILE:O	1:A:659:PHE:HB2	1.88	0.72
1:A:854:LEU:HD11	1:A:873:LEU:HD21	1.72	0.72
1:A:858:SER:OG	1:A:860:GLU:OE1	2.07	0.72
1:A:947:GLU:HB3	1:A:975:HIS:CD2	2.23	0.72
1:A:554:ASP:OD2	1:A:591:ASN:ND2	2.19	0.72
1:B:339:HIS:NE2	1:B:341:GLU:OE1	2.21	0.72
1:A:60:TRP:CE3	3:A:1101:NAD:H4N	2.23	0.72
1:B:624:GLU:O	1:B:628:THR:HG23	1.89	0.72
1:D:184:VAL:HG13	1:D:189:ASP:HB3	1.71	0.72
1:A:414:TYR:O	1:A:657:ARG:NH2	2.19	0.72
1:B:920:TYR:CD2	1:B:944:VAL:HG22	2.20	0.72
1:D:153:SER:OG	1:D:173:ASP:OD2	2.03	0.72
1:B:967:LEU:HD22	1:B:1005:ILE:HD13	1.72	0.72
1:D:138:ILE:HG21	1:D:167:LEU:HD11	1.72	0.72
1:A:789:GLN:OE1	1:A:833:LYS:HG2	1.90	0.72
1:D:26:VAL:O	1:D:30:ILE:HG12	1.89	0.71
1:A:876:GLU:N	1:A:876:GLU:OE1	2.23	0.71
1:A:931:GLU:OE1	1:A:931:GLU:N	2.23	0.71
1:C:271:ALA:HB2	1:C:289:VAL:HG21	1.70	0.71
1:D:230:ASN:O	1:D:233:ARG:HG2	1.90	0.71
2:E:68:SER:OG	2:E:73:LEU:HD11	1.91	0.71
1:A:755:TYR:CD2	1:A:799:LEU:HD13	2.26	0.71
1:B:981:ILE:HG12	1:B:1005:ILE:O	1.90	0.71
1:B:414:TYR:OH	1:B:654:ASN:OD1	2.06	0.70
1:B:827:LEU:HD23	1:B:831:LYS:HE2	1.72	0.70
1:A:668:GLU:OE2	1:A:725:TYR:OH	2.07	0.70
1:B:929:LYS:O	1:B:932:GLU:HG3	1.90	0.70
1:B:39:ASN:OD1	1:B:537:LYS:NZ	2.18	0.70
1:B:893:LYS:NZ	1:B:932:GLU:O	2.18	0.70
1:B:940:TYR:HE1	1:B:944:VAL:HG21	1.56	0.70
1:C:53:LEU:HB2	1:C:115:ASN:HD22	1.55	0.70
1:B:668:GLU:HG2	1:B:673:ILE:HD12	1.73	0.70

*Continued on next page...*

*Continued from previous page...*

Atom-1	Atom-2	Interatomic distance (Å)	Clash overlap (Å)
1:B:933:PHE:HB3	1:B:940:TYR:HE2	1.56	0.70
1:A:771:ILE:O	1:A:775:ILE:HG13	1.92	0.70
1:A:861:ASN:HB2	1:A:864:ASP:OD1	1.91	0.70
1:A:940:TYR:O	1:A:944:VAL:HG22	1.90	0.70
2:E:94:ASP:OD1	2:E:96:THR:OG1	2.05	0.70
2:E:106:ILE:HG22	2:E:108:SER:HB3	1.72	0.70
1:A:687:TYR:OH	1:A:715:GLU:OE2	2.05	0.70
1:B:980:VAL:HA	1:B:983:VAL:HG12	1.74	0.70
1:A:691:ILE:O	1:A:695:ILE:HG12	1.91	0.70
2:E:41:LYS:HE2	2:E:41:LYS:CA	2.22	0.70
1:B:491:GLN:HA	1:B:491:GLN:OE1	1.90	0.70
1:B:324:TYR:OH	1:B:590:ASP:OD1	2.03	0.70
1:B:333:VAL:HG23	1:B:541:ILE:HG21	1.73	0.70
1:B:668:GLU:OE2	1:B:725:TYR:OH	2.05	0.70
1:A:1003:TYR:HB2	1:A:1005:ILE:HG13	1.73	0.70
1:B:889:LEU:HB3	1:B:933:PHE:HD2	1.56	0.70
1:A:312:ILE:HG22	1:A:384:LEU:HD13	1.74	0.69
1:D:121:ILE:HD11	1:D:216:ILE:HG21	1.72	0.69
1:B:999:ILE:HG23	1:B:1005:ILE:HD12	1.73	0.69
1:A:768:PRO:HD2	1:A:771:ILE:HG12	1.73	0.69
1:B:819:ARG:O	1:B:823:ILE:HG13	1.91	0.69
1:B:856:PHE:O	1:B:857:LYS:HD3	1.91	0.69
1:D:281:ASP:HB3	1:D:284:GLU:OE2	1.93	0.69
1:C:129:VAL:HG11	1:C:138:ILE:HG21	1.75	0.69
1:A:327:LYS:NZ	1:A:391:ASN:O	2.26	0.69
1:C:47:GLY:O	1:C:133:ASN:ND2	2.21	0.69
2:E:64:ILE:HD13	2:E:110:PHE:CG	2.27	0.69
1:B:801:SER:HA	1:B:804:TYR:HD1	1.56	0.69
1:B:950:ASP:OD2	1:B:953:LYS:NZ	2.25	0.69
1:A:309:ILE:HD11	1:A:363:LEU:HD13	1.75	0.69
1:A:317:SER:HA	1:A:320:PHE:CD2	2.28	0.69
1:A:752:GLY:H	1:A:795:SER:HB2	1.58	0.69
1:A:985:LYS:HA	1:B:1001:MET:HE1	1.75	0.69
1:B:613:ARG:HD3	1:B:658:HIS:O	1.93	0.69
1:A:768:PRO:HD2	1:A:771:ILE:CG1	2.22	0.68
1:A:923:GLU:HA	1:A:923:GLU:OE2	1.91	0.68
1:A:981:ILE:HG12	1:A:1005:ILE:O	1.92	0.68
1:B:828:THR:HG23	1:B:831:LYS:HZ1	1.58	0.68
1:A:363:LEU:HD23	1:A:369:GLU:OE2	1.94	0.68
1:B:784:GLU:O	1:B:787:ILE:HG12	1.93	0.68
1:C:43:VAL:CG1	1:C:213:ILE:HD13	2.22	0.68

*Continued on next page...*

*Continued from previous page...*

Atom-1	Atom-2	Interatomic distance (Å)	Clash overlap (Å)
2:E:27:VAL:HG11	2:E:95:VAL:HG21	1.76	0.68
1:A:483:GLN:O	1:A:487:GLN:HG3	1.93	0.68
1:B:184:VAL:HG13	1:B:189:ASP:HB3	1.74	0.68
1:D:120:LYS:HD2	1:D:290:MET:HB3	1.74	0.68
1:D:125:ASN:O	1:D:125:ASN:ND2	2.20	0.68
1:D:290:MET:O	1:D:294:ILE:HG13	1.93	0.68
1:A:517:ARG:HB2	1:A:517:ARG:NH1	2.09	0.68
1:B:756:VAL:HG21	1:B:797:ASN:ND2	2.09	0.68
1:A:317:SER:HA	1:A:320:PHE:CE2	2.29	0.68
1:D:274:LEU:CD2	1:D:275:ILE:HG23	2.22	0.68
1:A:624:GLU:O	1:A:628:THR:HG23	1.93	0.68
1:B:866:MET:HA	1:B:866:MET:HE3	1.75	0.68
1:B:980:VAL:CG2	1:B:1005:ILE:HG22	2.24	0.68
1:C:204:MET:O	1:C:208:ILE:HG13	1.94	0.68
1:A:120:LYS:HD3	1:A:290:MET:HB3	1.76	0.67
1:A:620:ILE:HD11	1:A:655:ILE:HD11	1.76	0.67
1:C:103:ILE:HA	1:C:106:ASP:OD2	1.94	0.67
1:C:213:ILE:HB	1:C:243:PRO:HB3	1.75	0.67
1:A:165:ARG:HG3	1:A:165:ARG:NH1	2.07	0.67
1:B:23:ASP:O	1:B:27:VAL:HG22	1.93	0.67
1:B:842:LEU:CD1	1:B:853:LEU:HD23	2.24	0.67
2:E:88:HIS:HB3	2:E:91:THR:O	1.93	0.67
1:B:801:SER:HA	1:B:804:TYR:CD1	2.30	0.67
1:C:122:LEU:O	1:C:147:LYS:HE3	1.94	0.67
1:B:110:VAL:HG21	1:B:112:LYS:HE2	1.77	0.67
1:C:54:SER:HB3	1:C:115:ASN:HB3	1.76	0.67
1:B:61:ARG:O	1:B:65:LYS:HG2	1.93	0.67
1:D:35:GLU:O	1:D:39:ASN:ND2	2.27	0.67
1:B:419:ASP:OD1	1:B:419:ASP:N	2.27	0.67
2:E:96:THR:O	2:E:100:LEU:HD22	1.94	0.67
1:B:15:LEU:HD13	1:B:295:GLU:OE2	1.94	0.67
1:B:696:THR:O	1:B:700:SER:HB3	1.95	0.67
1:B:934:ILE:HD11	1:B:944:VAL:HG11	1.75	0.67
1:C:125:ASN:OD1	1:C:147:LYS:NZ	2.18	0.67
1:D:155:GLU:OE2	1:D:200:ILE:HG13	1.94	0.67
1:D:169:LYS:HE2	1:D:173:ASP:HB3	1.77	0.67
1:D:249:ASP:O	1:D:272:ALA:HB2	1.95	0.67
1:A:256:GLU:OE1	1:A:256:GLU:N	2.22	0.67
1:B:788:ASP:OD1	1:B:790:ASN:N	2.24	0.67
1:D:54:SER:N	1:D:115:ASN:HD21	1.93	0.67
1:A:417:LYS:NZ	1:A:686:GLU:OE2	2.28	0.66

*Continued on next page...*

*Continued from previous page...*

Atom-1	Atom-2	Interatomic distance (Å)	Clash overlap (Å)
1:A:775:ILE:HG22	1:A:808:ILE:HD11	1.77	0.66
1:B:828:THR:O	1:B:835:ILE:HD11	1.94	0.66
1:A:816:ILE:HB	1:A:818:LYS:NZ	2.11	0.66
1:B:828:THR:HG23	1:B:831:LYS:NZ	2.10	0.66
1:A:492:PHE:HA	1:A:496:GLY:HA3	1.77	0.66
1:A:742:PHE:HE2	1:A:781:LEU:HD22	1.61	0.66
1:B:492:PHE:HE2	1:B:506:PRO:HG3	1.59	0.66
2:E:85:LYS:HE3	2:E:87:VAL:HG22	1.75	0.66
1:A:283:LEU:O	1:A:283:LEU:HD12	1.95	0.66
1:A:809:LYS:HD2	1:A:815:PHE:HB3	1.76	0.66
1:A:974:LYS:HD2	1:A:974:LYS:C	2.16	0.66
1:B:161:ALA:HB1	1:B:166:TYR:HE1	1.61	0.66
1:A:751:ILE:O	1:A:804:TYR:OH	2.13	0.66
1:A:805:GLY:CA	1:A:844:LEU:HD11	2.24	0.66
1:C:285:ARG:O	1:C:289:VAL:HG23	1.96	0.66
1:A:866:MET:O	1:A:869:ILE:HG22	1.94	0.66
1:A:184:VAL:HG13	1:A:189:ASP:HB3	1.77	0.66
1:A:588:LEU:HD12	1:A:612:ILE:HD13	1.76	0.66
1:A:925:ILE:HG21	1:A:930:MET:CE	2.25	0.66
1:B:997:LEU:O	1:B:1001:MET:HG2	1.96	0.66
1:A:60:TRP:CH2	3:A:1101:NAD:C5N	2.75	0.65
1:A:925:ILE:HG21	1:A:930:MET:HE3	1.79	0.65
1:B:755:TYR:CD2	1:B:799:LEU:HD13	2.31	0.65
1:B:923:GLU:OE2	1:B:923:GLU:HA	1.95	0.65
1:D:123:ALA:HA	1:D:145:ARG:NH1	2.11	0.65
1:A:831:LYS:HD2	1:A:831:LYS:O	1.95	0.65
1:B:933:PHE:C	1:B:936:MET:HE1	2.16	0.65
1:C:33:ILE:HG21	1:C:293:LEU:HD23	1.78	0.65
1:A:947:GLU:HB3	1:A:975:HIS:NE2	2.11	0.65
1:B:517:ARG:O	1:B:520:THR:HG22	1.95	0.65
1:A:359:ARG:O	1:A:363:LEU:HD12	1.96	0.65
2:E:85:LYS:HE3	2:E:87:VAL:CG2	2.27	0.65
1:B:613:ARG:HD2	1:B:663:ASP:OD2	1.97	0.65
1:B:622:LYS:O	1:B:626:GLU:HG2	1.97	0.65
2:E:106:ILE:CG2	2:E:108:SER:HB3	2.26	0.65
1:B:827:LEU:CD2	1:B:831:LYS:HG3	2.26	0.65
1:D:30:ILE:HG22	1:D:293:LEU:HD23	1.78	0.65
1:B:492:PHE:CE2	1:B:506:PRO:HG3	2.31	0.65
1:A:310:ASP:OD1	1:A:380:ARG:NH1	2.30	0.65
1:B:136:ASN:O	1:B:140:THR:HG23	1.96	0.65
1:D:33:ILE:HD12	1:D:293:LEU:HD21	1.78	0.65

*Continued on next page...*

*Continued from previous page...*

Atom-1	Atom-2	Interatomic distance (Å)	Clash overlap (Å)
1:D:59:TRP:HZ3	1:D:62:LEU:HD13	1.62	0.65
1:B:374:SER:HB3	1:B:377:GLN:HG2	1.77	0.65
1:A:578:MET:HA	1:A:578:MET:HE2	1.79	0.64
1:A:951:TYR:OH	1:A:976:MET:HB3	1.97	0.64
1:B:620:ILE:HD11	1:B:647:MET:HE2	1.78	0.64
1:D:53:LEU:HD22	1:D:286:TYR:HD2	1.61	0.64
1:B:809:LYS:NZ	1:B:813:LYS:O	2.29	0.64
1:A:60:TRP:CZ2	3:A:1101:NAD:C5N	2.81	0.64
1:A:789:GLN:OE1	1:A:789:GLN:HA	1.97	0.64
1:A:827:LEU:HD13	1:A:831:LYS:NZ	2.12	0.64
1:B:80:SER:OG	1:B:82:ASP:OD1	2.09	0.64
1:A:43:VAL:HB	1:A:213:ILE:HD13	1.78	0.64
1:B:104:LEU:HD13	1:B:108:PHE:CE2	2.32	0.64
1:D:253:ILE:HD11	1:D:258:LEU:HA	1.78	0.64
1:A:144:LYS:HA	1:B:460:LEU:CD2	2.27	0.64
1:A:987:ARG:HB3	1:A:996:TYR:CD2	2.33	0.64
1:A:308:VAL:HG21	1:A:354:PHE:HE2	1.62	0.64
1:A:552:TYR:CD1	1:B:552:TYR:HA	2.32	0.64
1:B:327:LYS:NZ	1:B:391:ASN:O	2.29	0.64
1:A:54:SER:CA	1:A:115:ASN:HD21	2.11	0.64
1:A:337:ASP:OD2	1:A:356:TYR:OH	2.15	0.64
1:B:368:ASP:O	1:B:372:LYS:NZ	2.27	0.64
1:A:100:PHE:HE1	1:A:104:LEU:HD11	1.62	0.64
1:A:971:ALA:O	1:A:977:LYS:HD2	1.97	0.64
1:B:64:ASP:HA	1:B:79:TYR:OH	1.98	0.64
1:C:104:LEU:HD11	1:C:185:LEU:CD1	2.27	0.64
1:B:115:ASN:ND2	1:B:117:ILE:HB	2.13	0.63
1:B:809:LYS:HE2	1:B:815:PHE:O	1.98	0.63
1:B:889:LEU:HB3	1:B:933:PHE:CD2	2.33	0.63
1:D:34:THR:HG21	1:D:297:GLN:HA	1.79	0.63
1:B:122:LEU:HB3	1:B:145:ARG:HD2	1.80	0.63
1:B:445:LEU:O	1:B:708:PHE:HB2	1.99	0.63
1:B:817:SER:O	1:B:821:SER:OG	2.12	0.63
1:D:136:ASN:O	1:D:140:THR:HG23	1.98	0.63
1:A:428:GLN:H	1:A:428:GLN:CD	2.02	0.63
1:B:747:ARG:HG2	1:B:747:ARG:HH11	1.63	0.63
1:B:866:MET:HG3	1:B:912:TYR:CE1	2.33	0.63
1:D:30:ILE:HG21	1:D:292:LEU:CD1	2.29	0.63
1:B:285:ARG:O	1:B:289:VAL:HG23	1.98	0.63
1:B:812:GLU:CG	1:B:815:PHE:HB2	2.28	0.63
1:B:83:GLU:OE1	1:B:87:ILE:HG12	1.99	0.63

*Continued on next page...*

*Continued from previous page...*

Atom-1	Atom-2	Interatomic distance (Å)	Clash overlap (Å)
1:B:56:TYR:CE1	1:B:135:ASP:HB3	2.33	0.63
1:B:1000:LEU:HD12	1:B:1000:LEU:O	1.99	0.63
1:D:216:ILE:HD13	1:D:290:MET:HE1	1.81	0.63
1:A:446:GLY:HA3	1:A:708:PHE:HB2	1.80	0.63
1:B:931:GLU:O	1:B:934:ILE:HG13	1.99	0.63
1:B:980:VAL:HA	1:B:983:VAL:CG1	2.29	0.63
2:E:23:PHE:HE2	2:E:106:ILE:HD11	1.63	0.62
1:B:375:LYS:HA	1:B:375:LYS:CE	2.17	0.62
1:D:262:GLU:HA	1:D:266:LEU:O	1.99	0.62
1:A:100:PHE:CE1	1:A:104:LEU:HD11	2.34	0.62
1:B:60:TRP:CZ3	3:B:1101:NAD:H6N	2.32	0.62
1:B:635:GLY:O	1:B:636:PHE:HB2	1.98	0.62
1:B:832:GLN:HA	1:B:835:ILE:HD12	1.81	0.62
2:E:55:GLY:N	2:E:58:ASP:OD2	2.31	0.62
1:A:41:LYS:NZ	1:A:210:THR:O	2.22	0.62
1:B:60:TRP:CB	3:B:1101:NAD:C5N	2.78	0.62
1:B:664:ILE:O	1:B:668:GLU:HG3	1.98	0.62
1:C:159:ALA:HB2	1:D:239:SER:O	1.99	0.62
1:A:758:LEU:HD21	1:A:775:ILE:HD13	1.80	0.62
1:A:947:GLU:HG2	1:A:948:ASN:N	2.14	0.62
1:B:110:VAL:CG2	1:B:112:LYS:HE2	2.29	0.62
1:B:197:TYR:HD2	1:B:200:ILE:HD12	1.63	0.62
1:A:511:PHE:O	1:A:515:ILE:HG23	1.98	0.62
1:A:981:ILE:O	1:A:985:LYS:HG3	1.99	0.62
1:D:70:LEU:HD23	1:D:95:LYS:HE3	1.81	0.62
1:A:731:GLU:HG3	1:A:732:GLY:N	2.13	0.62
1:A:842:LEU:HB3	1:A:871:ILE:HD12	1.82	0.62
1:C:49:GLY:HA3	1:C:286:TYR:OH	1.99	0.62
1:C:245:PHE:HB2	1:C:266:LEU:HD22	1.81	0.62
1:A:230:ASN:OD1	1:A:233:ARG:NH2	2.33	0.62
1:A:920:TYR:OH	1:A:931:GLU:OE2	2.18	0.62
1:C:177:GLY:O	1:C:182:ASN:ND2	2.33	0.62
1:D:138:ILE:HG22	1:D:167:LEU:HD21	1.82	0.62
1:A:459:ILE:HG21	1:A:475:GLN:HE21	1.65	0.62
1:D:229:LEU:HD21	1:D:266:LEU:HG	1.82	0.62
1:A:320:PHE:HE1	1:A:387:PHE:HB2	1.65	0.61
1:A:664:ILE:O	1:A:668:GLU:HG3	2.00	0.61
1:A:967:LEU:HD22	1:A:1005:ILE:CD1	2.28	0.61
1:B:151:VAL:HG22	1:B:167:LEU:HD23	1.81	0.61
1:B:65:LYS:HZ2	1:B:107:PHE:HE2	1.48	0.61
1:B:91:PHE:O	1:B:95:LYS:HB2	2.00	0.61

*Continued on next page...*

*Continued from previous page...*

Atom-1	Atom-2	Interatomic distance (Å)	Clash overlap (Å)
1:A:816:ILE:HB	1:A:818:LYS:HZ1	1.63	0.61
1:C:62:LEU:HG	1:C:107:PHE:CD2	2.35	0.61
2:E:46:LYS:HG3	2:E:113:VAL:HG21	1.81	0.61
1:B:863:ASN:OD1	2:E:77:ASN:HA	2.00	0.61
1:B:331:LYS:HE3	1:B:339:HIS:ND1	2.16	0.61
1:D:262:GLU:OE1	1:D:267:ARG:HA	2.00	0.61
1:B:46:VAL:HG13	1:B:50:VAL:HG21	1.82	0.61
1:B:247:ARG:HD2	1:B:253:ILE:HD12	1.81	0.61
1:B:620:ILE:HD11	1:B:647:MET:CE	2.31	0.61
1:B:768:PRO:HD2	1:B:771:ILE:CG1	2.31	0.61
1:D:272:ALA:HA	1:D:285:ARG:HD3	1.81	0.61
1:A:188:ASP:OD1	1:C:233:ARG:NH2	2.34	0.61
1:B:793:GLU:OE2	1:B:801:SER:HB2	2.00	0.61
1:C:291:ASP:OD1	1:C:292:LEU:N	2.34	0.61
1:B:885:ILE:O	1:B:889:LEU:HG	2.00	0.61
1:A:781:LEU:HB3	1:A:785:LYS:NZ	2.15	0.60
1:A:856:PHE:HD1	1:A:856:PHE:O	1.84	0.60
1:A:827:LEU:HB3	1:A:831:LYS:CE	2.30	0.60
1:A:880:GLU:O	1:A:884:LEU:HD12	2.01	0.60
1:B:115:ASN:HB2	1:B:116:PRO:HD2	1.82	0.60
1:B:341:GLU:HG2	1:B:345:THR:O	2.01	0.60
1:B:684:ILE:HG21	1:B:726:VAL:HG21	1.83	0.60
2:E:31:ILE:CG2	2:E:83:ILE:HD13	2.31	0.60
2:E:31:ILE:HD12	2:E:81:PHE:CD2	2.36	0.60
1:A:260:TYR:CG	1:C:90:ILE:HG12	2.36	0.60
1:A:911:ASP:O	1:A:915:THR:OG1	2.20	0.60
1:B:115:ASN:HD22	1:B:117:ILE:H	1.49	0.60
1:B:829:GLN:HA	1:B:856:PHE:CE2	2.35	0.60
1:A:767:LEU:HD21	1:A:775:ILE:HD12	1.82	0.60
1:A:971:ALA:HB2	1:A:1005:ILE:HG12	1.83	0.60
1:B:81:SER:HB2	1:D:82:ASP:OD2	2.01	0.60
1:C:94:VAL:HG23	1:C:95:LYS:HD3	1.83	0.60
2:E:43:TYR:CE1	2:E:67:PHE:HB2	2.36	0.60
1:A:497:LEU:HD23	1:A:503:HIS:HB2	1.82	0.60
1:A:817:SER:OG	1:A:820:LEU:HB2	2.00	0.60
1:B:358:GLU:O	1:B:362:GLU:HG3	2.01	0.60
1:B:797:ASN:HB3	2:E:119:LEU:HD21	1.84	0.60
1:D:248:THR:HG21	1:D:286:TYR:CE1	2.37	0.60
1:A:516:GLU:O	1:A:520:THR:HB	2.01	0.60
1:A:1003:TYR:HB2	1:A:1005:ILE:CG1	2.31	0.60
1:B:979:HIS:O	1:B:982:GLU:HG2	2.02	0.60

*Continued on next page...*

*Continued from previous page...*

Atom-1	Atom-2	Interatomic distance (Å)	Clash overlap (Å)
1:C:53:LEU:HD11	1:C:286:TYR:CD1	2.37	0.60
1:C:224:ASN:O	1:C:228:LEU:HD23	2.01	0.60
1:A:755:TYR:HB2	1:A:804:TYR:CZ	2.37	0.60
1:B:66:TYR:O	1:B:70:LEU:HD23	2.01	0.60
1:D:122:LEU:O	1:D:147:LYS:HE2	2.02	0.60
1:C:41:LYS:HD3	1:C:210:THR:O	2.02	0.60
1:C:271:ALA:HB2	1:C:289:VAL:CG2	2.31	0.60
1:A:471:TYR:OH	1:B:146:GLY:HA2	2.02	0.60
1:B:839:PHE:CE2	1:B:857:LYS:HG2	2.37	0.60
1:C:248:THR:HB	1:C:285:ARG:HB3	1.83	0.60
1:A:30:ILE:HD11	1:A:292:LEU:CD2	2.31	0.59
1:A:502:ARG:NH1	1:A:504:TYR:HA	2.17	0.59
1:B:184:VAL:HG13	1:B:189:ASP:CB	2.32	0.59
1:B:913:MET:CE	1:B:940:TYR:HD2	2.15	0.59
1:A:827:LEU:HD11	1:A:838:LEU:CD1	2.31	0.59
1:B:135:ASP:HB2	1:B:137:LEU:HD13	1.83	0.59
1:D:216:ILE:HD13	1:D:246:ILE:HD13	1.85	0.59
2:E:41:LYS:HE2	2:E:41:LYS:N	2.18	0.59
1:A:60:TRP:CZ2	3:A:1101:NAD:H5N	2.36	0.59
1:A:155:GLU:HG3	1:B:236:GLN:HG3	1.84	0.59
1:D:80:SER:OG	1:D:83:GLU:HG3	2.03	0.59
1:A:889:LEU:HD22	1:A:933:PHE:HB3	1.85	0.59
1:B:176:LYS:HB2	1:B:182:ASN:OD1	2.02	0.59
1:D:79:TYR:HB3	1:D:84:TYR:CE1	2.38	0.59
1:D:125:ASN:HD22	1:D:125:ASN:C	2.04	0.59
1:D:282:TYR:HD2	3:D:1101:NAD:C6A	2.16	0.59
1:A:368:ASP:OD1	1:A:369:GLU:N	2.36	0.59
1:B:52:THR:OG1	1:B:58:GLN:OE1	2.18	0.59
1:B:338:TYR:CZ	1:B:357:MET:HB2	2.38	0.59
1:B:561:LEU:HD11	1:B:584:VAL:HG11	1.84	0.59
1:D:118:HIS:CE1	1:D:137:LEU:HB3	2.38	0.59
1:D:153:SER:HG	1:D:175:ARG:HH11	1.49	0.59
2:E:31:ILE:HD12	2:E:81:PHE:HD2	1.67	0.59
1:A:54:SER:HA	1:A:115:ASN:HD21	1.67	0.59
1:A:68:GLU:HB2	1:A:74:PRO:HD3	1.85	0.59
1:B:341:GLU:HB2	1:B:343:ASN:OD1	2.02	0.59
1:B:347:VAL:CG1	1:B:397:ALA:HB2	2.31	0.59
2:E:52:ARG:HH11	2:E:54:ASN:HA	1.68	0.59
1:B:376:LYS:HA	1:B:379:GLU:OE1	2.03	0.59
1:B:827:LEU:HD13	1:B:835:ILE:CG1	2.23	0.59
1:A:913:MET:CE	1:A:936:MET:HB2	2.32	0.58

*Continued on next page...*



*Continued from previous page...*

Atom-1	Atom-2	Interatomic distance (Å)	Clash overlap (Å)
1:B:281:ASP:OD1	1:B:284:GLU:HB2	2.02	0.58
1:D:34:THR:HG23	1:D:297:GLN:HA	1.83	0.58
1:A:281:ASP:O	1:A:284:GLU:HG2	2.02	0.58
1:A:827:LEU:HD22	1:A:831:LYS:CE	2.31	0.58
1:A:831:LYS:HZ2	1:A:835:ILE:HB	1.68	0.58
1:B:1000:LEU:O	1:B:1004:PHE:HA	2.03	0.58
1:D:36:SER:CB	1:D:42:LEU:HB2	2.33	0.58
1:A:724:LYS:HB2	1:A:760:ARG:HB3	1.84	0.58
1:A:893:LYS:HZ1	1:A:897:ILE:HB	1.68	0.58
1:B:755:TYR:HD2	1:B:799:LEU:HD13	1.68	0.58
1:B:825:LEU:HD11	1:B:848:ASN:OD1	2.03	0.58
1:A:827:LEU:HD11	1:A:838:LEU:HD12	1.85	0.58
1:B:980:VAL:HG23	1:B:1005:ILE:O	2.03	0.58
1:C:249:ASP:O	1:C:285:ARG:NH1	2.37	0.58
1:D:151:VAL:CG2	1:D:167:LEU:HD23	2.27	0.58
1:D:248:THR:HG21	1:D:286:TYR:CD1	2.39	0.58
1:A:889:LEU:HD22	1:A:933:PHE:HB2	1.85	0.58
1:B:407:ILE:HD12	1:B:408:GLU:H	1.67	0.58
1:C:30:ILE:HD13	1:C:292:LEU:CD2	2.33	0.58
1:C:43:VAL:CG2	1:C:128:HIS:HB2	2.34	0.58
1:D:54:SER:CA	1:D:115:ASN:HD21	2.17	0.58
1:A:360:PHE:HA	1:A:363:LEU:CD1	2.32	0.58
1:A:523:ASN:HB3	1:A:526:ASP:OD2	2.04	0.58
1:A:812:GLU:CG	1:A:815:PHE:HB2	2.34	0.58
1:B:338:TYR:CE2	1:B:357:MET:HB2	2.39	0.58
1:C:262:GLU:HA	1:C:266:LEU:O	2.04	0.58
1:A:595:LEU:HB3	1:A:603:VAL:CG1	2.34	0.58
1:C:229:LEU:HD13	1:C:264:LYS:HD3	1.86	0.58
1:A:809:LYS:HE3	1:A:815:PHE:H	1.69	0.57
1:B:747:ARG:HG2	1:B:747:ARG:NH1	2.19	0.57
2:E:41:LYS:HE2	2:E:41:LYS:H	1.68	0.57
1:A:684:ILE:HG21	1:A:726:VAL:HG11	1.86	0.57
1:A:459:ILE:HD12	1:A:475:GLN:HG2	1.86	0.57
1:A:950:ASP:HB3	1:A:953:LYS:HD3	1.85	0.57
1:B:832:GLN:HA	1:B:835:ILE:CD1	2.34	0.57
1:C:110:VAL:CG1	1:C:112:LYS:HE2	2.31	0.57
2:E:98:ILE:O	2:E:102:LEU:HG	2.02	0.57
1:A:407:ILE:HG13	1:A:589:TYR:CD2	2.40	0.57
1:A:698:GLN:O	1:A:704:MET:HB2	2.03	0.57
1:B:60:TRP:CG	3:B:1101:NAD:C5N	2.87	0.57
1:B:291:ASP:O	1:B:295:GLU:HG3	2.05	0.57

*Continued on next page...*

*Continued from previous page...*

Atom-1	Atom-2	Interatomic distance (Å)	Clash overlap (Å)
1:B:771:ILE:O	1:B:775:ILE:HG13	2.05	0.57
1:D:45:PHE:HA	1:D:130:ILE:O	2.04	0.57
1:D:100:PHE:CE2	1:D:185:LEU:HD11	2.39	0.57
3:A:1101:NAD:O2N	3:A:1101:NAD:H2D	2.04	0.57
1:B:237:LYS:HE3	1:B:238:ASP:OD2	2.05	0.57
1:B:531:MET:O	1:B:536:GLN:NE2	2.28	0.57
1:C:43:VAL:HG23	1:C:128:HIS:HB2	1.87	0.57
1:B:981:ILE:HD11	1:B:1004:PHE:O	2.03	0.57
1:C:67:HIS:ND1	1:C:73:SER:O	2.37	0.57
1:C:174:PHE:CE1	1:C:183:VAL:HG21	2.39	0.57
1:D:105:LYS:O	1:D:109:GLN:HB2	2.04	0.57
1:D:246:ILE:CG1	1:D:269:ILE:HD11	2.26	0.57
2:E:20:ILE:HD13	2:E:48:PHE:HB2	1.87	0.57
1:A:312:ILE:HG22	1:A:384:LEU:CD1	2.33	0.57
1:B:64:ASP:OD1	1:B:65:LYS:N	2.38	0.57
1:B:724:LYS:HE3	2:E:124:PRO:HA	1.87	0.57
1:A:48:ALA:HA	1:A:133:ASN:OD1	2.04	0.57
1:A:767:LEU:HD12	1:A:771:ILE:HB	1.86	0.57
1:B:70:LEU:HD21	1:B:91:PHE:HB2	1.86	0.57
1:B:256:GLU:OE1	1:B:256:GLU:N	2.37	0.57
1:B:322:LEU:HD13	1:B:325:ILE:CD1	2.33	0.57
1:C:117:ILE:CD1	1:C:286:TYR:HB3	2.34	0.57
1:C:242:LYS:HB2	1:C:267:ARG:HG3	1.86	0.57
1:D:242:LYS:HE3	1:D:265:GLY:HA2	1.87	0.57
1:A:955:ILE:HB	1:A:958:TRP:CE2	2.39	0.57
1:B:226:ASN:OD1	1:D:86:ARG:NH2	2.38	0.57
2:E:13:ASP:OD1	2:E:13:ASP:N	2.35	0.57
1:B:152:ILE:HG21	1:B:158:VAL:HG22	1.87	0.56
1:B:147:LYS:HB3	1:B:165:ARG:HH21	1.70	0.56
1:D:121:ILE:CD1	1:D:216:ILE:HG21	2.34	0.56
1:A:308:VAL:HG21	1:A:354:PHE:CE2	2.40	0.56
1:A:312:ILE:CG2	1:A:384:LEU:HD13	2.35	0.56
1:A:325:ILE:HD12	1:A:541:ILE:CD1	2.35	0.56
1:A:491:GLN:O	1:A:496:GLY:N	2.37	0.56
1:C:115:ASN:HB2	1:C:116:PRO:HD2	1.87	0.56
1:D:30:ILE:HG22	1:D:293:LEU:CD2	2.35	0.56
1:D:155:GLU:O	1:D:158:VAL:HG23	2.05	0.56
1:D:282:TYR:CD2	3:D:1101:NAD:C5A	2.89	0.56
1:A:946:PRO:HB3	1:A:976:MET:SD	2.45	0.56
1:D:222:ASP:OD1	1:D:223:TYR:N	2.38	0.56
1:A:827:LEU:HD13	1:A:831:LYS:HZ1	1.70	0.56

*Continued on next page...*

*Continued from previous page...*

Atom-1	Atom-2	Interatomic distance (Å)	Clash overlap (Å)
1:D:59:TRP:CZ3	1:D:62:LEU:HD13	2.41	0.56
1:A:243:PRO:HD2	1:A:265:GLY:O	2.05	0.56
1:A:398:LYS:HG3	1:A:399:ASP:OD1	2.05	0.56
1:A:497:LEU:HA	1:A:502:ARG:O	2.05	0.56
1:A:578:MET:HA	1:A:578:MET:CE	2.36	0.56
1:C:61:ARG:HE	1:C:61:ARG:HA	1.70	0.56
1:C:118:HIS:NE2	1:C:137:LEU:HB3	2.21	0.56
1:A:442:LEU:HD22	1:A:450:GLU:HB2	1.87	0.56
1:B:256:GLU:HA	1:B:259:ILE:HD11	1.88	0.56
1:B:955:ILE:HD12	1:B:958:TRP:HE1	1.70	0.56
1:D:214:VAL:HG22	1:D:244:PHE:HD2	1.70	0.56
1:A:120:LYS:NZ	1:A:291:ASP:OD1	2.28	0.56
1:A:695:ILE:O	1:A:699:PHE:HD1	1.89	0.56
1:B:54:SER:OG	1:B:137:LEU:HD21	2.04	0.56
2:E:96:THR:HG22	2:E:100:LEU:CD2	2.36	0.56
1:A:309:ILE:HD11	1:A:363:LEU:CD1	2.36	0.56
1:A:561:LEU:CD1	1:A:584:VAL:HG23	2.31	0.56
1:A:834:GLN:HE21	1:A:838:LEU:HD11	1.71	0.56
1:B:395:CYS:SG	1:B:399:ASP:HB2	2.46	0.56
2:E:20:ILE:O	2:E:22:THR:N	2.38	0.56
1:A:236:GLN:HB3	1:A:239:SER:HB3	1.88	0.55
1:A:933:PHE:HB3	1:A:936:MET:HE1	1.87	0.55
1:B:783:ALA:HB2	1:B:837:PHE:CE2	2.41	0.55
1:B:940:TYR:HE1	1:B:944:VAL:CG2	2.20	0.55
1:C:23:ASP:OD1	1:C:24:ASN:N	2.40	0.55
1:A:73:SER:HB3	1:A:74:PRO:HD2	1.88	0.55
1:A:139:ASP:OD1	1:A:167:LEU:HD21	2.05	0.55
1:B:691:ILE:O	1:B:695:ILE:HG13	2.06	0.55
1:B:839:PHE:CE1	1:B:873:LEU:HD12	2.41	0.55
1:A:502:ARG:HD3	1:A:504:TYR:CD2	2.41	0.55
1:A:789:GLN:NE2	1:A:832:GLN:H	1.97	0.55
1:B:61:ARG:O	1:B:65:LYS:HE3	2.06	0.55
1:D:30:ILE:HG21	1:D:292:LEU:HD11	1.88	0.55
1:D:51:SER:O	1:D:56:TYR:HB2	2.06	0.55
1:D:124:MET:SD	1:D:294:ILE:HG12	2.47	0.55
1:D:125:ASN:HA	1:D:147:LYS:NZ	2.21	0.55
2:E:14:LEU:HD11	2:E:23:PHE:CD1	2.42	0.55
1:B:256:GLU:HG2	1:D:70:LEU:HD22	1.87	0.55
1:C:246:ILE:HG23	1:C:289:VAL:HG11	1.87	0.55
1:A:345:THR:HA	1:A:395:CYS:O	2.06	0.55
1:A:841:LEU:HB3	1:A:844:LEU:HD12	1.89	0.55

*Continued on next page...*

*Continued from previous page...*

Atom-1	Atom-2	Interatomic distance (Å)	Clash overlap (Å)
1:B:363:LEU:HD21	1:B:370:ARG:HA	1.87	0.55
1:B:945:ASP:OD2	1:B:948:ASN:HB3	2.06	0.55
1:C:55:ASP:O	1:C:55:ASP:OD1	2.25	0.55
1:C:151:VAL:HB	1:C:175:ARG:NH1	2.21	0.55
1:D:151:VAL:HG22	1:D:167:LEU:CD2	2.29	0.55
2:E:33:LEU:CD1	2:E:37:LYS:HB3	2.34	0.55
1:A:274:LEU:HD11	1:A:292:LEU:HD22	1.89	0.55
1:A:502:ARG:HD3	1:A:504:TYR:CE2	2.40	0.55
1:B:779:LEU:HD23	1:B:801:SER:OG	2.06	0.55
1:B:887:GLU:OE2	1:B:888:TYR:N	2.40	0.55
1:B:921:PHE:HE2	1:B:976:MET:CE	2.20	0.55
1:D:139:ASP:OD1	1:D:139:ASP:N	2.39	0.55
1:A:219:GLY:O	1:A:222:ASP:HB2	2.06	0.55
1:A:707:VAL:O	1:A:710:THR:OG1	2.23	0.55
1:B:60:TRP:HB2	3:B:1101:NAD:C4N	2.36	0.55
1:D:40:GLY:O	1:D:127:ALA:HB2	2.06	0.55
1:D:61:ARG:HG3	1:D:61:ARG:HH11	1.72	0.55
2:E:100:LEU:O	2:E:104:GLU:HG2	2.06	0.55
1:A:775:ILE:CG2	1:A:808:ILE:HD11	2.36	0.55
1:B:345:THR:HA	1:B:395:CYS:O	2.06	0.55
1:B:462:SER:OG	1:B:471:TYR:HB2	2.06	0.55
1:D:91:PHE:CE2	1:D:95:LYS:HG3	2.42	0.55
1:A:370:ARG:HH11	1:A:381:PHE:HE1	1.55	0.54
1:A:459:ILE:HG21	1:A:475:GLN:NE2	2.23	0.54
1:A:950:ASP:OD1	1:A:952:LYS:HE2	2.07	0.54
1:D:43:VAL:HB	1:D:213:ILE:HD13	1.87	0.54
1:D:101:ASP:OD1	1:D:180:GLY:N	2.39	0.54
1:C:64:ASP:O	1:C:68:GLU:HG2	2.07	0.54
1:C:169:LYS:HD3	1:C:173:ASP:HB3	1.89	0.54
2:E:102:LEU:HD12	2:E:112:ILE:HD11	1.89	0.54
1:C:53:LEU:HB2	1:C:115:ASN:ND2	2.22	0.54
1:A:833:LYS:HA	1:A:836:ASP:OD2	2.06	0.54
1:A:842:LEU:HD11	1:A:850:LYS:HB2	1.88	0.54
1:C:85:LEU:HB3	1:C:187:GLU:HA	1.90	0.54
1:D:34:THR:HG23	1:D:297:GLN:CD	2.28	0.54
1:A:374:SER:OG	1:A:375:LYS:N	2.41	0.54
1:B:839:PHE:CZ	1:B:857:LYS:HG2	2.43	0.54
1:C:105:LYS:HD2	1:C:109:GLN:CG	2.37	0.54
1:D:91:PHE:O	1:D:95:LYS:HB2	2.08	0.54
1:A:369:GLU:OE1	1:A:372:LYS:HD2	2.06	0.54
1:A:410:ASN:ND2	1:A:597:GLU:OE2	2.36	0.54

*Continued on next page...*

*Continued from previous page...*

Atom-1	Atom-2	Interatomic distance (Å)	Clash overlap (Å)
1:A:724:LYS:HE3	1:A:763:LYS:HG2	1.89	0.54
1:B:104:LEU:HD12	1:B:174:PHE:CZ	2.43	0.54
1:B:414:TYR:O	1:B:657:ARG:NH2	2.25	0.54
1:B:935:GLY:N	1:B:941:ASP:OD1	2.40	0.54
1:D:60:TRP:HB3	1:D:84:TYR:OH	2.08	0.54
1:A:594:PHE:O	1:A:598:ASN:HB2	2.07	0.54
1:A:824:THR:HA	1:A:827:LEU:CD1	2.37	0.54
1:A:827:LEU:CD2	1:A:831:LYS:HE2	2.31	0.54
1:B:30:ILE:HG12	1:B:293:LEU:HD23	1.88	0.54
1:A:281:ASP:HB3	1:A:284:GLU:OE2	2.08	0.54
1:B:255:ASN:O	1:B:259:ILE:HG12	2.06	0.54
1:B:925:ILE:HG22	1:B:927:ASN:H	1.72	0.54
2:E:97:GLU:HA	2:E:100:LEU:HD23	1.89	0.54
1:A:394:ILE:HG22	1:A:395:CYS:SG	2.48	0.53
1:A:515:ILE:HG13	1:A:516:GLU:N	2.23	0.53
1:A:646:PHE:HB2	1:A:677:ARG:O	2.08	0.53
1:B:339:HIS:HD2	1:B:347:VAL:HG22	1.73	0.53
1:C:243:PRO:HD2	1:C:265:GLY:O	2.07	0.53
1:A:646:PHE:HB2	1:A:677:ARG:HG3	1.90	0.53
1:B:954:PHE:HE1	1:B:956:PRO:HA	1.72	0.53
1:A:56:TYR:CZ	1:A:135:ASP:HB3	2.44	0.53
1:A:429:SER:OG	1:A:435:ASP:OD1	2.26	0.53
1:A:608:PHE:CZ	1:A:612:ILE:HD11	2.43	0.53
1:B:455:TYR:CZ	1:B:477:ASN:HB3	2.43	0.53
1:B:733:LEU:O	1:B:737:VAL:HG23	2.08	0.53
1:A:54:SER:O	1:A:54:SER:OG	2.22	0.53
1:C:51:SER:OG	1:C:135:ASP:OD2	2.21	0.53
1:C:173:ASP:OD1	1:C:175:ARG:N	2.31	0.53
1:D:117:ILE:CG1	1:D:286:TYR:HB3	2.38	0.53
1:D:120:LYS:HD3	1:D:291:ASP:OD1	2.08	0.53
1:A:455:TYR:CZ	1:A:477:ASN:HB3	2.44	0.53
1:B:827:LEU:HD21	1:B:834:GLN:HB2	1.90	0.53
1:A:448:TRP:HZ3	1:A:488:ALA:HB2	1.73	0.53
1:B:24:ASN:HA	1:B:27:VAL:CG2	2.38	0.53
1:C:151:VAL:HG22	1:C:167:LEU:HD23	1.91	0.53
1:C:222:ASP:O	1:C:226:ASN:ND2	2.29	0.53
1:B:687:TYR:CZ	1:B:691:ILE:HD11	2.44	0.53
1:A:322:LEU:HD12	1:A:325:ILE:CD1	2.34	0.53
1:A:838:LEU:C	1:A:853:LEU:HD21	2.29	0.53
1:A:951:TYR:CD2	1:A:979:HIS:HB3	2.44	0.53
1:A:985:LYS:HA	1:B:1001:MET:CE	2.39	0.53

*Continued on next page...*

*Continued from previous page...*

Atom-1	Atom-2	Interatomic distance (Å)	Clash overlap (Å)
1:B:665:LYS:HE2	2:E:121:TRP:NE1	2.23	0.53
1:B:959:LEU:HD13	1:B:984:LEU:HD21	1.91	0.53
1:D:27:VAL:HG12	1:D:31:LYS:HE3	1.91	0.53
1:D:292:LEU:O	1:D:292:LEU:HD22	2.08	0.53
1:A:342:VAL:HG11	1:A:587:ARG:HG2	1.91	0.53
1:A:824:THR:HA	1:A:827:LEU:HG	1.91	0.53
1:B:43:VAL:HB	1:B:213:ILE:HD13	1.89	0.53
1:C:105:LYS:CE	1:C:109:GLN:HG2	2.39	0.53
1:A:867:ASN:O	1:A:871:ILE:HG23	2.09	0.52
1:B:979:HIS:HA	1:B:982:GLU:OE2	2.08	0.52
1:A:277:SER:HB2	1:A:284:GLU:OE2	2.09	0.52
1:A:708:PHE:O	1:A:711:GLN:HG3	2.09	0.52
1:A:777:ASP:OD1	1:A:819:ARG:NH1	2.41	0.52
1:A:958:TRP:HB3	1:A:962:TYR:OH	2.09	0.52
1:B:91:PHE:HE1	1:B:100:PHE:N	2.06	0.52
1:A:828:THR:O	1:A:831:LYS:HE3	2.09	0.52
1:A:891:THR:O	1:A:894:VAL:HG22	2.10	0.52
3:A:1101:NAD:O2N	3:A:1101:NAD:H3D	2.09	0.52
1:B:14:LYS:O	1:B:17:GLU:HG3	2.08	0.52
1:D:117:ILE:HG13	1:D:286:TYR:HB3	1.91	0.52
1:A:831:LYS:NZ	1:A:835:ILE:HD13	2.25	0.52
1:D:56:TYR:CD2	1:D:112:LYS:HG3	2.44	0.52
1:A:360:PHE:CA	1:A:363:LEU:HD12	2.35	0.52
1:B:65:LYS:HG3	1:B:107:PHE:CZ	2.45	0.52
1:B:553:ASP:O	1:B:557:LYS:HG2	2.09	0.52
1:B:869:ILE:HD13	1:B:874:ILE:O	2.09	0.52
1:C:62:LEU:HD12	1:C:108:PHE:CE2	2.44	0.52
1:D:43:VAL:HG22	1:D:128:HIS:H	1.75	0.52
1:D:50:VAL:HG22	1:D:117:ILE:HG21	1.91	0.52
1:D:214:VAL:HG13	1:D:244:PHE:HB2	1.92	0.52
1:A:23:ASP:OD1	1:A:24:ASN:N	2.42	0.52
1:B:104:LEU:HD13	1:B:108:PHE:CD2	2.45	0.52
1:D:36:SER:HB2	1:D:42:LEU:CB	2.37	0.52
1:A:581:ASP:OD2	1:A:622:LYS:HG2	2.10	0.52
1:A:934:ILE:O	1:A:934:ILE:HG13	2.09	0.52
1:B:104:LEU:HD12	1:B:174:PHE:CE1	2.45	0.52
1:B:115:ASN:HD21	1:B:117:ILE:HB	1.73	0.52
1:B:139:ASP:HA	1:B:142:CYS:SG	2.50	0.52
1:B:508:THR:OG1	1:B:510:GLU:OE1	2.16	0.52
1:B:930:MET:O	1:B:940:TYR:OH	2.22	0.52
1:D:214:VAL:HG22	1:D:244:PHE:CD2	2.44	0.52

*Continued on next page...*

*Continued from previous page...*

Atom-1	Atom-2	Interatomic distance (Å)	Clash overlap (Å)
2:E:103:SER:HA	2:E:111:PRO:CG	2.36	0.52
1:A:733:LEU:O	1:A:737:VAL:HG23	2.10	0.52
1:B:136:ASN:HA	1:B:139:ASP:OD1	2.10	0.52
1:B:428:GLN:OE1	1:B:428:GLN:HA	2.09	0.52
1:B:432:ILE:HG12	1:B:458:ILE:HG23	1.91	0.52
1:C:256:GLU:O	1:C:259:ILE:HG12	2.09	0.52
1:D:53:LEU:HD22	1:D:286:TYR:CD2	2.44	0.52
2:E:20:ILE:HG13	2:E:22:THR:HG22	1.92	0.52
1:A:322:LEU:CD1	1:A:542:LEU:HD21	2.37	0.52
1:B:874:ILE:HD11	1:B:876:GLU:O	2.10	0.52
1:C:57:PRO:HB3	1:C:107:PHE:CE2	2.44	0.52
1:D:53:LEU:HD13	1:D:286:TYR:CE2	2.45	0.52
1:D:110:VAL:HG21	1:D:112:LYS:HE2	1.92	0.52
1:A:758:LEU:O	1:A:762:THR:HG23	2.09	0.52
1:B:53:LEU:HD23	3:B:1101:NAD:H2A	1.92	0.52
1:B:863:ASN:CG	2:E:77:ASN:HA	2.30	0.52
1:C:152:ILE:HB	1:C:168:LEU:HD12	1.91	0.52
2:E:44:PHE:HB3	2:E:64:ILE:HD11	1.92	0.52
2:E:100:LEU:HD22	2:E:100:LEU:H	1.75	0.52
1:B:510:GLU:H	1:B:510:GLU:CD	2.13	0.51
1:B:548:ASN:OD1	1:B:548:ASN:N	2.41	0.51
1:B:858:SER:O	1:B:864:ASP:HB3	2.09	0.51
1:B:53:LEU:HD13	1:B:283:LEU:HD13	1.91	0.51
1:B:1003:TYR:CD2	1:B:1005:ILE:HD11	2.46	0.51
1:D:62:LEU:HD22	1:D:66:TYR:CE2	2.46	0.51
1:B:478:ARG:O	1:B:481:ILE:HG22	2.10	0.51
1:A:85:LEU:HB3	1:A:187:GLU:HB2	1.93	0.51
1:B:40:GLY:O	1:B:127:ALA:HB2	2.10	0.51
1:B:60:TRP:CG	3:B:1101:NAD:C6N	2.92	0.51
1:B:699:PHE:CE2	1:B:745:PRO:HD3	2.45	0.51
1:B:809:LYS:HD3	1:B:844:LEU:HD23	1.91	0.51
1:D:248:THR:O	1:D:285:ARG:NH1	2.43	0.51
1:B:763:LYS:HB2	2:E:124:PRO:CB	2.40	0.51
1:B:775:ILE:HG22	1:B:808:ILE:HD11	1.93	0.51
1:A:53:LEU:HD13	3:A:1101:NAD:H2A	1.93	0.51
1:A:308:VAL:HG13	1:A:356:TYR:HB2	1.91	0.51
1:B:46:VAL:HG13	1:B:50:VAL:CG2	2.41	0.51
1:B:319:LEU:HD11	1:B:333:VAL:CG2	2.38	0.51
1:B:999:ILE:CG2	1:B:1005:ILE:HD12	2.40	0.51
1:D:282:TYR:HD2	3:D:1101:NAD:C5A	2.24	0.51
1:A:881:HIS:HA	1:A:884:LEU:CD1	2.38	0.51

*Continued on next page...*

*Continued from previous page...*

Atom-1	Atom-2	Interatomic distance (Å)	Clash overlap (Å)
1:A:890:GLU:O	1:A:894:VAL:HG13	2.11	0.51
1:B:70:LEU:HD21	1:B:91:PHE:CB	2.41	0.51
1:B:419:ASP:O	1:B:423:LYS:HG3	2.11	0.51
1:B:511:PHE:O	1:B:515:ILE:HG23	2.11	0.51
1:A:976:MET:O	1:A:980:VAL:HG22	2.11	0.51
1:B:363:LEU:CD2	1:B:370:ARG:HB2	2.41	0.51
1:C:250:PRO:CA	1:C:285:ARG:HH12	2.20	0.51
1:C:43:VAL:HG23	1:C:128:HIS:O	2.10	0.51
1:B:317:SER:N	1:B:318:PRO:HD2	2.26	0.51
1:B:581:ASP:OD1	1:B:622:LYS:NZ	2.23	0.51
1:B:955:ILE:HD12	1:B:958:TRP:NE1	2.25	0.51
1:C:43:VAL:HG23	1:C:128:HIS:C	2.32	0.51
3:C:1101:NAD:H8A	3:C:1101:NAD:H51N	1.92	0.51
1:D:43:VAL:HG13	1:D:128:HIS:O	2.11	0.51
1:D:282:TYR:HD1	1:D:285:ARG:HH12	1.58	0.51
2:E:103:SER:CA	2:E:111:PRO:HG2	2.40	0.51
1:A:445:LEU:O	1:A:708:PHE:HB2	2.11	0.50
1:A:588:LEU:HD12	1:A:612:ILE:CD1	2.41	0.50
1:B:682:GLU:HG2	1:B:683:LYS:N	2.26	0.50
1:B:699:PHE:CZ	1:B:745:PRO:HG3	2.46	0.50
1:C:283:LEU:O	1:C:283:LEU:HD22	2.11	0.50
1:D:116:PRO:O	1:D:120:LYS:HG3	2.11	0.50
1:A:363:LEU:HD23	1:A:369:GLU:CD	2.31	0.50
1:C:56:TYR:CZ	1:C:135:ASP:HB3	2.46	0.50
1:D:123:ALA:HA	1:D:145:ARG:HH12	1.76	0.50
1:A:58:GLN:HB2	1:A:60:TRP:CD1	2.46	0.50
1:A:61:ARG:HB3	1:A:107:PHE:HZ	1.77	0.50
1:B:139:ASP:OD2	1:B:169:LYS:NZ	2.38	0.50
1:B:670:SER:OG	1:B:671:CYS:SG	2.54	0.50
1:A:71:TYR:HH	1:C:257:THR:HG1	1.59	0.50
1:C:292:LEU:C	1:C:292:LEU:HD23	2.32	0.50
2:E:97:GLU:N	2:E:97:GLU:OE1	2.44	0.50
1:B:424:PHE:O	1:B:438:LYS:NZ	2.44	0.50
1:B:812:GLU:HB3	1:B:815:PHE:CB	2.42	0.50
1:A:237:LYS:HE3	1:A:237:LYS:CA	2.40	0.50
1:A:379:GLU:HA	1:A:379:GLU:OE1	2.12	0.50
1:A:478:ARG:O	1:A:481:ILE:HG22	2.12	0.50
1:A:832:GLN:O	1:A:835:ILE:HG22	2.12	0.50
1:B:130:ILE:HD11	1:B:207:ILE:CG2	2.40	0.50
1:B:229:LEU:HD13	1:B:264:LYS:HD3	1.94	0.50
1:D:65:LYS:O	1:D:65:LYS:HD3	2.12	0.50

*Continued on next page...*



*Continued from previous page...*

Atom-1	Atom-2	Interatomic distance (Å)	Clash overlap (Å)
1:A:922:LEU:HD21	1:A:965:LYS:HZ3	1.76	0.50
2:E:120:ASP:O	2:E:126:PHE:HB2	2.12	0.50
1:A:54:SER:N	1:A:115:ASN:HD21	2.09	0.50
1:A:237:LYS:HE3	1:A:237:LYS:HA	1.92	0.50
1:A:262:GLU:HA	1:A:266:LEU:O	2.11	0.50
1:A:317:SER:N	1:A:318:PRO:HD2	2.27	0.50
1:A:407:ILE:HD13	1:A:407:ILE:N	2.27	0.50
1:A:517:ARG:HB2	1:A:517:ARG:HH11	1.76	0.50
1:A:545:LEU:HD21	1:A:594:PHE:HE2	1.76	0.50
1:A:767:LEU:HD21	1:A:775:ILE:CD1	2.42	0.50
1:B:677:ARG:HD3	1:B:677:ARG:N	2.26	0.50
1:D:271:ALA:HA	1:D:274:LEU:HB3	1.92	0.50
1:B:407:ILE:HD12	1:B:408:GLU:N	2.26	0.50
1:B:588:LEU:CD1	1:B:612:ILE:HD13	2.41	0.50
1:A:62:LEU:HD11	1:A:107:PHE:HB3	1.93	0.49
1:B:781:LEU:O	1:B:785:LYS:HG3	2.13	0.49
1:A:148:TYR:HE2	1:A:163:SER:HB2	1.77	0.49
1:A:610:GLN:NE2	1:B:560:GLU:OE1	2.43	0.49
1:A:784:GLU:O	1:A:787:ILE:HG22	2.12	0.49
1:A:842:LEU:HA	1:A:845:LEU:HG	1.93	0.49
1:A:570:SER:CB	1:B:669:ARG:HD3	2.42	0.49
1:A:751:ILE:CG2	1:A:795:SER:HB3	2.42	0.49
1:A:866:MET:CG	1:A:912:TYR:HE1	2.25	0.49
1:B:980:VAL:CA	1:B:983:VAL:HG12	2.42	0.49
1:C:30:ILE:HD13	1:C:292:LEU:HD22	1.95	0.49
1:C:261:TYR:O	1:C:266:LEU:HB2	2.11	0.49
1:D:58:GLN:HB2	1:D:60:TRP:CD1	2.48	0.49
1:D:179:LYS:HB3	1:D:181:GLU:OE1	2.12	0.49
1:A:65:LYS:NZ	1:A:69:GLU:HB2	2.28	0.49
1:A:655:ILE:HA	1:A:659:PHE:CD1	2.47	0.49
1:B:793:GLU:OE1	1:B:800:TYR:HB3	2.12	0.49
1:D:271:ALA:HB2	1:D:289:VAL:CG1	2.42	0.49
1:A:229:LEU:HD21	1:A:266:LEU:HG	1.95	0.49
1:A:696:THR:O	1:A:700:SER:HB3	2.13	0.49
1:B:668:GLU:HA	1:B:673:ILE:CD1	2.42	0.49
1:B:987:ARG:HA	1:B:987:ARG:NE	2.26	0.49
1:C:155:GLU:OE1	1:C:200:ILE:HG12	2.12	0.49
1:D:203:LEU:O	1:D:207:ILE:HG13	2.11	0.49
2:E:52:ARG:HH12	2:E:54:ASN:HA	1.77	0.49
1:A:1001:MET:HE2	1:B:989:LYS:HG3	1.94	0.49
1:B:197:TYR:CD2	1:B:200:ILE:HD12	2.46	0.49

*Continued on next page...*

*Continued from previous page...*

Atom-1	Atom-2	Interatomic distance (Å)	Clash overlap (Å)
1:B:295:GLU:HB2	1:B:301:PHE:CZ	2.48	0.49
1:B:724:LYS:HB2	1:B:760:ARG:HB3	1.94	0.49
1:B:961:ASN:O	2:E:61:VAL:N	2.42	0.49
1:C:132:THR:OG1	1:C:218:TYR:OH	2.08	0.49
2:E:22:THR:OG1	2:E:23:PHE:N	2.44	0.49
1:A:57:PRO:CB	1:A:107:PHE:HE1	2.26	0.49
1:A:253:ILE:HD11	1:A:257:THR:HG22	1.95	0.49
1:A:781:LEU:HB3	1:A:785:LYS:HZ1	1.77	0.49
1:B:25:ASN:OD1	1:B:26:VAL:N	2.46	0.49
1:A:780:VAL:O	1:A:784:GLU:HG3	2.12	0.49
1:B:312:ILE:CG2	1:B:384:LEU:HD13	2.43	0.49
1:C:66:TYR:CE1	1:C:103:ILE:HG21	2.48	0.49
1:C:208:ILE:HG23	1:C:213:ILE:HG13	1.93	0.49
2:E:23:PHE:CE2	2:E:106:ILE:HD11	2.46	0.49
1:A:927:ASN:OD1	1:A:929:LYS:N	2.39	0.49
1:B:363:LEU:HD23	1:B:363:LEU:O	2.12	0.49
1:B:783:ALA:HB2	1:B:837:PHE:HE2	1.78	0.49
1:B:870:ARG:NH2	2:E:75:ILE:O	2.46	0.49
1:D:94:VAL:HG23	1:D:95:LYS:N	2.28	0.49
1:B:440:PHE:HB2	1:B:599:CYS:HB3	1.95	0.48
1:D:216:ILE:CD1	1:D:290:MET:HE1	2.43	0.48
2:E:120:ASP:OD1	2:E:120:ASP:N	2.43	0.48
1:A:64:ASP:OD1	1:A:64:ASP:C	2.51	0.48
1:A:82:ASP:OD1	1:A:83:GLU:N	2.46	0.48
1:A:973:ASN:O	1:A:974:LYS:HG3	2.12	0.48
1:B:458:ILE:O	1:B:462:SER:HB3	2.13	0.48
1:B:588:LEU:HD11	1:B:612:ILE:HD13	1.95	0.48
1:A:328:ILE:HD13	1:A:554:ASP:OD1	2.12	0.48
2:E:88:HIS:CE1	2:E:90:ALA:HB3	2.48	0.48
2:E:96:THR:O	2:E:99:VAL:N	2.46	0.48
1:A:216:ILE:HD12	1:A:290:MET:CE	2.43	0.48
1:A:497:LEU:HD21	1:A:503:HIS:ND1	2.28	0.48
1:A:767:LEU:CD1	1:A:771:ILE:HB	2.43	0.48
1:B:130:ILE:HD11	1:B:207:ILE:HG21	1.96	0.48
1:B:312:ILE:HG22	1:B:384:LEU:HD22	1.94	0.48
1:C:53:LEU:HG	3:C:1101:NAD:H2A	1.95	0.48
1:C:173:ASP:OD1	1:C:175:ARG:HG3	2.13	0.48
1:C:271:ALA:HB1	1:C:285:ARG:HG3	1.94	0.48
1:A:377:GLN:N	1:A:377:GLN:OE1	2.47	0.48
1:B:633:GLU:HA	1:B:633:GLU:OE2	2.13	0.48
1:B:768:PRO:HD2	1:B:771:ILE:HG12	1.95	0.48

*Continued on next page...*

*Continued from previous page...*

Atom-1	Atom-2	Interatomic distance (Å)	Clash overlap (Å)
1:C:90:ILE:O	1:C:94:VAL:HG13	2.12	0.48
1:D:236:GLN:O	1:D:239:SER:OG	2.14	0.48
1:A:42:LEU:O	1:A:127:ALA:N	2.46	0.48
1:A:85:LEU:HB3	1:A:187:GLU:HA	1.95	0.48
1:A:966:LEU:O	1:A:970:ILE:HG13	2.13	0.48
1:B:58:GLN:HB3	1:B:60:TRP:CD1	2.49	0.48
1:B:552:TYR:O	1:B:556:VAL:HG23	2.14	0.48
1:B:708:PHE:O	1:B:711:GLN:HG3	2.13	0.48
1:C:128:HIS:HB3	1:C:166:TYR:O	2.14	0.48
1:C:152:ILE:HD12	1:C:158:VAL:HA	1.96	0.48
1:A:233:ARG:NH1	1:C:191:LEU:HD22	2.28	0.48
1:A:839:PHE:HA	1:A:853:LEU:CD2	2.43	0.48
1:B:62:LEU:HD22	1:B:107:PHE:HD2	1.79	0.48
1:B:839:PHE:HA	1:B:853:LEU:HD21	1.95	0.48
1:C:94:VAL:CG2	1:C:95:LYS:N	2.77	0.48
1:C:248:THR:O	1:C:248:THR:OG1	2.27	0.48
1:A:64:ASP:HA	1:A:79:TYR:OH	2.14	0.48
1:B:363:LEU:HD23	1:B:370:ARG:HB2	1.96	0.48
1:C:215:PHE:HB2	1:C:245:PHE:HA	1.94	0.48
1:D:184:VAL:HG13	1:D:189:ASP:CB	2.41	0.48
1:A:43:VAL:HG21	1:A:207:ILE:CG2	2.44	0.48
1:A:608:PHE:O	1:A:612:ILE:HG12	2.14	0.48
1:C:33:ILE:HG12	1:C:244:PHE:CD2	2.49	0.48
1:C:44:PHE:CD1	1:C:214:VAL:HB	2.49	0.48
1:C:120:LYS:CB	1:C:290:MET:HE2	2.36	0.48
1:D:247:ARG:HD3	1:D:253:ILE:HB	1.96	0.48
1:A:1003:TYR:HB2	1:A:1005:ILE:CD1	2.44	0.47
1:C:50:VAL:CG2	1:C:216:ILE:HG12	2.43	0.47
1:C:55:ASP:O	1:C:112:LYS:HE3	2.14	0.47
1:C:152:ILE:HD13	1:C:157:ASP:HB3	1.96	0.47
1:C:246:ILE:HG22	1:C:248:THR:CG2	2.44	0.47
1:D:99:ALA:O	1:D:103:ILE:HD13	2.14	0.47
1:D:190:TYR:CD1	1:D:223:TYR:HE2	2.31	0.47
1:A:511:PHE:HD1	1:A:514:ARG:HH21	1.62	0.47
1:B:825:LEU:HD21	1:B:848:ASN:OD1	2.14	0.47
1:D:274:LEU:HD23	1:D:275:ILE:CG2	2.33	0.47
1:D:277:SER:HB2	1:D:284:GLU:OE2	2.14	0.47
2:E:67:PHE:HA	2:E:72:ARG:HA	1.97	0.47
2:E:76:GLU:OE1	2:E:76:GLU:N	2.30	0.47
2:E:97:GLU:HG2	2:E:98:ILE:N	2.29	0.47
1:A:53:LEU:HD23	1:A:117:ILE:HD13	1.96	0.47

*Continued on next page...*

*Continued from previous page...*

Atom-1	Atom-2	Interatomic distance (Å)	Clash overlap (Å)
1:A:248:THR:OG1	3:A:1101:NAD:O2B	2.33	0.47
1:A:432:ILE:HG12	1:A:458:ILE:HG23	1.96	0.47
1:B:668:GLU:HA	1:B:673:ILE:HD11	1.96	0.47
1:B:775:ILE:CG2	1:B:808:ILE:HD11	2.45	0.47
1:A:862:ILE:HD11	1:A:916:PHE:CZ	2.50	0.47
1:A:966:LEU:O	1:A:966:LEU:HD12	2.15	0.47
1:B:665:LYS:HE2	2:E:121:TRP:HE1	1.77	0.47
2:E:26:ASP:OD1	2:E:89:VAL:HB	2.15	0.47
1:A:40:GLY:O	1:A:127:ALA:HB2	2.14	0.47
1:A:780:VAL:HG21	1:A:819:ARG:HB2	1.95	0.47
1:B:308:VAL:HG21	1:B:354:PHE:HE2	1.79	0.47
1:B:364:LYS:HA	1:B:381:PHE:HZ	1.79	0.47
1:B:827:LEU:CD1	1:B:835:ILE:HA	2.44	0.47
3:B:1101:NAD:O2N	3:B:1101:NAD:H2D	2.14	0.47
1:C:225:ILE:O	1:C:229:LEU:HG	2.13	0.47
1:A:647:MET:HG2	1:A:678:PHE:CE2	2.49	0.47
1:B:24:ASN:HA	1:B:27:VAL:HG22	1.96	0.47
1:B:152:ILE:HD11	1:B:166:TYR:CD1	2.49	0.47
1:B:476:ILE:HD11	1:B:527:LEU:HD23	1.95	0.47
1:B:799:LEU:HD22	1:B:803:ASP:OD1	2.14	0.47
1:A:459:ILE:HD12	1:A:475:GLN:HE21	1.80	0.47
1:A:497:LEU:HD12	1:A:497:LEU:H	1.80	0.47
1:A:741:LEU:HD23	1:A:754:ARG:CG	2.44	0.47
1:A:760:ARG:O	1:A:763:LYS:HB2	2.15	0.47
1:A:809:LYS:HG2	1:A:844:LEU:CD2	2.45	0.47
1:A:821:SER:O	1:A:825:LEU:HG	2.14	0.47
1:C:87:ILE:HB	1:C:88:PRO:HD3	1.97	0.47
1:C:109:GLN:OE1	1:C:109:GLN:O	2.31	0.47
1:C:208:ILE:HA	1:C:213:ILE:HD11	1.97	0.47
1:C:242:LYS:HB3	1:C:265:GLY:O	2.15	0.47
1:D:58:GLN:HB2	1:D:60:TRP:HD1	1.79	0.47
1:B:660:LYS:O	1:B:664:ILE:HG13	2.15	0.47
1:C:105:LYS:HD2	1:C:109:GLN:HG2	1.96	0.47
3:C:1101:NAD:C8A	3:C:1101:NAD:C3B	2.93	0.47
1:A:179:LYS:HB3	1:A:181:GLU:OE1	2.15	0.47
1:A:622:LYS:O	1:A:626:GLU:HG2	2.15	0.47
1:B:812:GLU:HB3	1:B:815:PHE:HB2	1.96	0.47
1:C:43:VAL:HG23	1:C:128:HIS:CA	2.45	0.47
1:C:45:PHE:HB2	1:C:213:ILE:HG23	1.97	0.47
1:D:61:ARG:HG3	1:D:61:ARG:NH1	2.29	0.47
1:A:502:ARG:HG2	1:A:503:HIS:N	2.29	0.47

*Continued on next page...*

*Continued from previous page...*

Atom-1	Atom-2	Interatomic distance (Å)	Clash overlap (Å)
1:A:745:PRO:HG2	1:A:748:ASP:OD2	2.15	0.47
1:A:755:TYR:O	1:A:759:GLU:HG3	2.15	0.47
1:A:923:GLU:OE2	1:A:923:GLU:CA	2.63	0.47
1:B:845:LEU:O	1:B:850:LYS:NZ	2.47	0.47
1:C:124:MET:HE3	1:C:293:LEU:HB3	1.97	0.47
1:B:34:THR:O	1:B:38:ARG:HD3	2.14	0.46
1:B:788:ASP:OD1	1:B:789:GLN:N	2.48	0.46
1:C:33:ILE:HD11	1:C:269:ILE:HD11	1.96	0.46
1:D:138:ILE:HG22	1:D:167:LEU:CD2	2.44	0.46
1:A:412:LEU:HB2	1:A:441:PHE:CZ	2.50	0.46
1:A:866:MET:HG3	1:A:912:TYR:HE1	1.80	0.46
3:A:1101:NAD:H2D	3:A:1101:NAD:H2N	1.57	0.46
1:A:326:ARG:HG3	1:A:594:PHE:HB2	1.98	0.46
1:B:537:LYS:HE2	1:B:537:LYS:HB3	1.55	0.46
1:B:545:LEU:HD21	1:B:600:LEU:HD13	1.98	0.46
1:B:767:LEU:HD23	1:B:767:LEU:HA	1.78	0.46
1:C:62:LEU:HD23	1:C:62:LEU:HA	1.78	0.46
2:E:99:VAL:O	2:E:103:SER:OG	2.27	0.46
1:A:411:SER:O	1:A:415:HIS:HD2	1.98	0.46
1:A:821:SER:OG	1:A:846:SER:N	2.48	0.46
1:A:839:PHE:HA	1:A:853:LEU:HD23	1.97	0.46
1:B:128:HIS:ND1	1:B:166:TYR:HB2	2.29	0.46
1:B:361:PHE:CD2	1:B:396:MET:HG2	2.50	0.46
1:B:934:ILE:HA	1:B:941:ASP:OD1	2.15	0.46
1:B:940:TYR:CE1	1:B:944:VAL:HG21	2.44	0.46
1:C:61:ARG:HD2	1:C:61:ARG:N	2.30	0.46
1:A:801:SER:HA	1:A:804:TYR:CD1	2.50	0.46
1:B:132:THR:HG22	1:B:170:VAL:CG2	2.46	0.46
1:B:652:PHE:CD1	1:B:684:ILE:HG23	2.51	0.46
1:B:865:LEU:HD21	1:B:885:ILE:HD11	1.96	0.46
1:C:281:ASP:O	1:C:285:ARG:NE	2.48	0.46
1:A:873:LEU:O	1:A:873:LEU:HD13	2.15	0.46
1:A:936:MET:SD	1:A:936:MET:N	2.89	0.46
1:B:70:LEU:CD2	1:B:91:PHE:HD2	2.29	0.46
1:B:31:LYS:HB3	1:B:31:LYS:HE3	1.63	0.46
1:B:81:SER:O	1:B:84:TYR:HB2	2.15	0.46
1:B:214:VAL:HA	1:B:244:PHE:O	2.16	0.46
1:B:951:TYR:CD2	1:B:979:HIS:HB3	2.51	0.46
1:D:147:LYS:HZ1	1:D:165:ARG:HH22	1.62	0.46
2:E:64:ILE:HD13	2:E:110:PHE:CD2	2.50	0.46
1:A:507:PHE:CZ	1:A:707:VAL:HG21	2.50	0.46

*Continued on next page...*

*Continued from previous page...*

Atom-1	Atom-2	Interatomic distance (Å)	Clash overlap (Å)
1:C:237:LYS:HD2	1:C:238:ASP:CG	2.36	0.46
1:A:660:LYS:O	1:A:664:ILE:HG13	2.16	0.46
1:B:148:TYR:HE2	1:B:162:THR:OG1	1.99	0.46
1:B:302:ILE:HA	1:B:307:GLU:OE2	2.16	0.46
1:B:809:LYS:HE3	1:B:843:PRO:O	2.15	0.46
1:B:863:ASN:ND2	2:E:77:ASN:HA	2.31	0.46
1:D:32:GLU:OE2	1:D:32:GLU:O	2.34	0.46
1:D:62:LEU:HD23	1:D:62:LEU:O	2.16	0.46
1:D:125:ASN:ND2	1:D:125:ASN:C	2.66	0.46
1:D:197:TYR:HD2	1:D:200:ILE:HD12	1.80	0.46
1:A:319:LEU:HD11	1:A:333:VAL:HG21	1.98	0.46
1:A:727:LYS:HD2	1:A:728:LEU:H	1.81	0.46
1:B:411:SER:O	1:B:415:HIS:HD2	1.98	0.46
1:D:138:ILE:HG21	1:D:167:LEU:CD1	2.45	0.46
1:D:271:ALA:HB2	1:D:289:VAL:HG13	1.98	0.46
1:D:274:LEU:HD21	1:D:288:ALA:HB1	1.97	0.46
1:A:456:SER:OG	1:A:478:ARG:NH1	2.48	0.45
1:A:620:ILE:HD12	1:A:667:LEU:HD13	1.98	0.45
1:B:179:LYS:HB2	1:B:181:GLU:OE2	2.15	0.45
1:B:339:HIS:HD2	1:B:347:VAL:CG2	2.29	0.45
1:B:515:ILE:HG13	1:B:516:GLU:N	2.31	0.45
1:B:809:LYS:HE3	1:B:843:PRO:C	2.36	0.45
1:A:56:TYR:HH	1:A:108:PHE:HD1	1.64	0.45
1:A:145:ARG:O	1:A:145:ARG:HD3	2.16	0.45
1:A:274:LEU:HD11	1:A:292:LEU:CD2	2.46	0.45
1:A:435:ASP:HB3	1:A:458:ILE:HG12	1.97	0.45
1:A:984:LEU:O	1:A:988:VAL:HG23	2.16	0.45
1:A:1001:MET:CE	1:B:989:LYS:HG3	2.46	0.45
1:B:17:GLU:O	1:B:21:MET:HG2	2.16	0.45
1:D:27:VAL:O	1:D:31:LYS:HG3	2.15	0.45
1:A:53:LEU:CD2	1:A:117:ILE:HD13	2.47	0.45
1:A:253:ILE:HG22	1:A:270:ASP:OD2	2.17	0.45
1:A:469:CYS:SG	1:A:542:LEU:HD11	2.56	0.45
1:B:596:TYR:CE2	1:B:603:VAL:HG21	2.51	0.45
1:B:713:ILE:HD12	1:B:713:ILE:HA	1.82	0.45
1:B:965:LYS:HB3	1:B:965:LYS:HE3	1.71	0.45
1:C:121:ILE:HD11	1:C:216:ILE:HD13	1.99	0.45
1:C:158:VAL:HG13	1:C:203:LEU:HD22	1.98	0.45
1:D:53:LEU:CD2	1:D:286:TYR:HD2	2.29	0.45
1:A:369:GLU:OE2	1:A:369:GLU:C	2.55	0.45
1:B:42:LEU:O	1:B:127:ALA:N	2.49	0.45

*Continued on next page...*

*Continued from previous page...*

Atom-1	Atom-2	Interatomic distance (Å)	Clash overlap (Å)
1:C:174:PHE:CZ	1:C:183:VAL:HG21	2.51	0.45
3:C:1101:NAD:H3B	3:C:1101:NAD:C8A	2.40	0.45
1:D:48:ALA:HA	1:D:133:ASN:OD1	2.16	0.45
1:A:300:LYS:HE3	1:A:311:TYR:OH	2.16	0.45
1:A:937:ASP:OD1	1:A:940:TYR:HB3	2.16	0.45
1:C:150:SER:HB2	1:C:163:SER:CB	2.44	0.45
1:C:151:VAL:HB	1:C:175:ARG:HH12	1.81	0.45
1:D:33:ILE:CD1	1:D:293:LEU:HD11	2.47	0.45
1:D:282:TYR:CD2	3:D:1101:NAD:C6A	2.99	0.45
1:A:125:ASN:ND2	1:B:521:ASN:OD1	2.49	0.45
1:B:64:ASP:HB3	1:B:79:TYR:CE2	2.51	0.45
1:B:751:ILE:CG2	1:B:795:SER:HB2	2.47	0.45
1:B:959:LEU:CD1	1:B:984:LEU:HD21	2.46	0.45
1:D:125:ASN:HA	1:D:147:LYS:CE	2.46	0.45
1:D:216:ILE:HD13	1:D:246:ILE:CD1	2.47	0.45
1:A:835:ILE:HG23	1:A:836:ASP:N	2.32	0.45
1:B:62:LEU:HD22	1:B:107:PHE:CD2	2.52	0.45
1:B:256:GLU:HG2	1:D:70:LEU:CD2	2.47	0.45
1:C:92:TYR:CE2	1:C:97:GLU:HG2	2.52	0.45
1:D:151:VAL:HA	1:D:167:LEU:HB3	1.99	0.45
1:A:274:LEU:HD23	1:A:288:ALA:HB1	1.98	0.45
1:A:480:ARG:HB3	1:A:601:TRP:HD1	1.82	0.45
1:A:995:ARG:NH1	1:A:998:GLU:OE2	2.49	0.45
1:B:531:MET:HB3	1:B:531:MET:HE3	1.78	0.45
1:B:869:ILE:HD12	2:E:57:CYS:SG	2.57	0.45
1:A:497:LEU:CD2	1:A:503:HIS:HB2	2.47	0.45
1:A:845:LEU:N	1:A:845:LEU:HD23	2.32	0.45
3:A:1101:NAD:H3D	3:A:1101:NAD:PN	2.57	0.45
1:B:763:LYS:HD3	1:B:764:CYS:SG	2.56	0.45
1:C:62:LEU:HD11	1:C:104:LEU:HD23	1.99	0.45
1:C:205:LYS:HD3	1:C:231:TRP:NE1	2.32	0.45
1:D:120:LYS:HB3	1:D:290:MET:HG3	1.99	0.45
2:E:96:THR:O	2:E:99:VAL:HB	2.17	0.45
1:A:551:LEU:HD23	1:A:551:LEU:HA	1.84	0.45
1:B:117:ILE:HG13	1:B:286:TYR:HB3	1.99	0.45
1:B:236:GLN:H	1:B:236:GLN:HG2	1.62	0.45
1:B:359:ARG:HA	1:B:359:ARG:HD2	1.87	0.45
1:B:596:TYR:CD2	1:B:603:VAL:HG21	2.52	0.45
1:B:617:SER:HA	1:B:667:LEU:HD21	1.99	0.45
1:B:755:TYR:HB2	1:B:804:TYR:CE2	2.52	0.45
1:C:42:LEU:HD21	1:C:44:PHE:CE2	2.52	0.45

*Continued on next page...*

*Continued from previous page...*

Atom-1	Atom-2	Interatomic distance (Å)	Clash overlap (Å)
1:C:60:TRP:CD1	1:C:61:ARG:HD2	2.51	0.45
1:C:89:GLN:OE1	1:C:188:ASP:HB2	2.17	0.45
1:C:220:LEU:HD23	1:C:220:LEU:HA	1.86	0.45
1:D:27:VAL:O	1:D:30:ILE:HG13	2.17	0.45
1:D:85:LEU:HD22	1:D:190:TYR:CE2	2.52	0.45
1:A:459:ILE:CG2	1:A:475:GLN:HE21	2.29	0.44
1:B:131:THR:O	1:B:169:LYS:HA	2.17	0.44
1:B:755:TYR:CE2	1:B:799:LEU:HD13	2.52	0.44
1:C:108:PHE:CZ	1:C:134:TYR:HE1	2.35	0.44
1:A:106:ASP:OD1	1:A:107:PHE:N	2.50	0.44
1:C:94:VAL:HG23	1:C:95:LYS:N	2.31	0.44
1:C:130:ILE:HG12	1:C:168:LEU:HB3	1.99	0.44
1:C:152:ILE:HG22	1:C:200:ILE:CD1	2.47	0.44
1:A:67:HIS:CD2	1:A:71:TYR:HD2	2.36	0.44
1:A:120:LYS:HD3	1:A:290:MET:CB	2.44	0.44
1:B:141:ALA:HA	1:B:145:ARG:HH21	1.83	0.44
1:B:275:ILE:HG12	1:B:288:ALA:CB	2.47	0.44
1:B:514:ARG:HG2	1:B:518:GLU:OE1	2.17	0.44
1:B:727:LYS:HD2	1:B:765:ASN:OD1	2.17	0.44
1:C:70:LEU:HD11	1:C:90:ILE:HG22	1.99	0.44
1:D:253:ILE:HD11	1:D:258:LEU:CA	2.45	0.44
2:E:40:ASN:OD1	2:E:41:LYS:HE3	2.17	0.44
1:A:85:LEU:HB3	1:A:187:GLU:CA	2.48	0.44
1:B:56:TYR:CG	1:B:57:PRO:HD2	2.52	0.44
1:B:328:ILE:HD12	1:B:328:ILE:H	1.82	0.44
1:B:660:LYS:HA	1:B:660:LYS:HD3	1.72	0.44
1:B:668:GLU:N	1:B:673:ILE:HD11	2.33	0.44
1:B:809:LYS:HA	1:B:812:GLU:O	2.18	0.44
1:B:921:PHE:CD1	1:B:921:PHE:C	2.91	0.44
1:B:999:ILE:HG23	1:B:1005:ILE:CD1	2.45	0.44
1:C:92:TYR:CZ	1:C:97:GLU:HG2	2.52	0.44
1:C:152:ILE:HD11	1:C:161:ALA:HB2	1.99	0.44
1:A:101:ASP:OD1	1:A:178:PHE:O	2.35	0.44
1:A:839:PHE:N	1:A:853:LEU:HD21	2.32	0.44
1:B:173:ASP:O	1:B:182:ASN:HB3	2.18	0.44
1:A:43:VAL:HG23	1:A:211:HIS:CD2	2.52	0.44
1:A:207:ILE:O	1:A:211:HIS:HB2	2.18	0.44
1:B:247:ARG:CD	1:B:253:ILE:HD12	2.46	0.44
1:B:375:LYS:HE2	1:B:375:LYS:CA	2.13	0.44
1:C:105:LYS:NZ	1:C:109:GLN:HG2	2.33	0.44
1:C:110:VAL:CG1	1:C:112:LYS:HG2	2.41	0.44

*Continued on next page...*



*Continued from previous page...*

Atom-1	Atom-2	Interatomic distance (Å)	Clash overlap (Å)
1:D:220:LEU:HD22	1:D:247:ARG:HD2	1.99	0.44
1:A:73:SER:CB	1:A:74:PRO:HD2	2.46	0.44
1:A:260:TYR:CD2	1:C:90:ILE:HG12	2.53	0.44
1:A:302:ILE:HD12	1:A:308:VAL:HG22	1.99	0.44
1:A:758:LEU:HD21	1:A:775:ILE:CD1	2.45	0.44
1:A:865:LEU:CD1	1:A:874:ILE:HD13	2.47	0.44
1:A:1003:TYR:HB2	1:A:1005:ILE:HD11	1.98	0.44
1:B:243:PRO:HD2	1:B:265:GLY:O	2.17	0.44
1:B:299:ASN:HB3	1:B:302:ILE:HD13	1.98	0.44
1:B:737:VAL:HG11	1:B:771:ILE:HG23	1.99	0.44
1:B:886:ILE:HD11	1:B:927:ASN:ND2	2.33	0.44
1:B:977:LYS:HE3	1:B:1004:PHE:O	2.18	0.44
1:A:51:SER:HB2	1:A:135:ASP:OD2	2.18	0.44
1:A:57:PRO:HB2	1:A:107:PHE:HE1	1.82	0.44
1:A:66:TYR:CE1	1:A:103:ILE:HG21	2.52	0.44
1:B:143:TRP:HZ3	1:B:148:TYR:CD1	2.36	0.44
1:B:425:ILE:HD13	1:B:442:LEU:HG	1.99	0.44
1:B:553:ASP:OD1	1:B:557:LYS:NZ	2.36	0.44
1:C:157:ASP:OD2	1:C:175:ARG:NH2	2.48	0.44
1:C:237:LYS:HB3	1:C:237:LYS:HE3	1.72	0.44
1:D:246:ILE:HG21	1:D:289:VAL:HG21	1.98	0.44
1:A:648:GLU:N	1:A:651:ASP:OD2	2.40	0.44
1:B:101:ASP:OD1	1:B:179:LYS:CA	2.64	0.44
1:B:721:TYR:O	1:B:760:ARG:NH2	2.47	0.44
1:B:763:LYS:HB2	2:E:124:PRO:HB2	2.00	0.44
1:B:885:ILE:HG12	1:B:916:PHE:CD1	2.53	0.44
1:C:91:PHE:CZ	1:C:103:ILE:HD13	2.53	0.44
1:C:104:LEU:HD23	1:C:104:LEU:HA	1.87	0.44
1:C:239:SER:O	1:C:239:SER:OG	2.34	0.44
1:A:922:LEU:HD21	1:A:965:LYS:NZ	2.33	0.43
1:A:931:GLU:O	1:A:934:ILE:HG23	2.18	0.43
1:B:933:PHE:HD1	1:B:936:MET:CE	2.31	0.43
1:B:969:LYS:HB2	1:B:969:LYS:HE2	1.52	0.43
1:C:43:VAL:HG23	1:C:128:HIS:CB	2.48	0.43
1:A:338:TYR:CD1	1:A:357:MET:HG3	2.52	0.43
1:A:755:TYR:HB2	1:A:804:TYR:CE1	2.53	0.43
1:B:876:GLU:OE1	1:B:877:PHE:N	2.51	0.43
1:B:946:PRO:HB2	1:B:976:MET:HB3	2.00	0.43
1:B:956:PRO:HG3	1:B:983:VAL:CG2	2.48	0.43
1:B:973:ASN:O	1:B:974:LYS:HB3	2.18	0.43
1:B:143:TRP:HZ3	1:B:148:TYR:HD1	1.67	0.43

*Continued on next page...*

*Continued from previous page...*

Atom-1	Atom-2	Interatomic distance (Å)	Clash overlap (Å)
1:B:824:THR:OG1	1:B:838:LEU:HD22	2.18	0.43
1:C:61:ARG:HA	1:C:61:ARG:NE	2.33	0.43
2:E:71:LYS:HE3	2:E:73:LEU:CD2	2.49	0.43
2:E:113:VAL:HG12	2:E:115:GLU:N	2.33	0.43
1:A:322:LEU:HD21	1:A:469:CYS:SG	2.58	0.43
1:A:974:LYS:HD2	1:A:974:LYS:O	2.19	0.43
1:B:114:THR:O	1:B:114:THR:OG1	2.31	0.43
1:B:786:HIS:HD2	1:B:837:PHE:HB2	1.83	0.43
1:B:934:ILE:HG23	1:B:941:ASP:OD1	2.19	0.43
1:B:940:TYR:HD1	1:B:940:TYR:O	2.02	0.43
1:B:1003:TYR:HB2	1:B:1005:ILE:CG1	2.43	0.43
3:B:1101:NAD:H8A	3:B:1101:NAD:H52A	2.01	0.43
1:D:258:LEU:HD12	1:D:268:ILE:HB	2.00	0.43
2:E:32:VAL:HG22	2:E:84:THR:CG2	2.49	0.43
1:A:742:PHE:CE2	1:A:781:LEU:HD22	2.48	0.43
1:D:59:TRP:HH2	1:D:185:LEU:HD13	1.84	0.43
1:A:346:VAL:O	1:A:396:MET:HA	2.18	0.43
1:A:767:LEU:HD12	1:A:767:LEU:HA	1.85	0.43
1:D:57:PRO:HB2	1:D:107:PHE:HE1	1.83	0.43
1:A:290:MET:O	1:A:294:ILE:HG13	2.19	0.43
1:A:941:ASP:N	1:A:941:ASP:OD1	2.51	0.43
1:B:148:TYR:HE2	1:B:162:THR:HG1	1.66	0.43
1:B:705:ASN:HB3	1:B:708:PHE:HB3	2.01	0.43
1:B:724:LYS:CE	2:E:124:PRO:HA	2.49	0.43
1:B:886:ILE:HD11	1:B:927:ASN:CG	2.39	0.43
3:B:1101:NAD:H2D	3:B:1101:NAD:H2N	1.51	0.43
1:C:61:ARG:N	1:C:61:ARG:CD	2.81	0.43
2:E:66:ILE:HD13	2:E:75:ILE:CG1	2.48	0.43
1:A:41:LYS:HE3	1:A:41:LYS:HB3	1.81	0.43
1:A:372:LYS:O	1:A:372:LYS:HG2	2.18	0.43
1:B:183:VAL:HG21	1:B:185:LEU:HD11	1.99	0.43
1:B:271:ALA:CB	1:B:285:ARG:HB3	2.49	0.43
1:B:929:LYS:O	1:B:929:LYS:CG	2.67	0.43
1:B:951:TYR:OH	1:B:976:MET:HB2	2.18	0.43
1:C:229:LEU:CD1	1:C:264:LYS:HD3	2.49	0.43
1:C:283:LEU:C	1:C:283:LEU:HD13	2.39	0.43
1:A:854:LEU:HD23	1:A:854:LEU:HA	1.75	0.43
1:A:922:LEU:CD2	1:A:965:LYS:NZ	2.82	0.43
1:B:510:GLU:OE1	1:B:510:GLU:N	2.41	0.43
1:B:698:GLN:HE21	1:B:698:GLN:HB2	1.67	0.43
1:B:930:MET:H	1:B:930:MET:HG2	1.62	0.43

*Continued on next page...*

*Continued from previous page...*

Atom-1	Atom-2	Interatomic distance (Å)	Clash overlap (Å)
1:B:971:ALA:O	1:B:977:LYS:HG3	2.19	0.43
1:D:117:ILE:HD13	1:D:120:LYS:HE2	2.00	0.43
1:D:272:ALA:CA	1:D:285:ARG:HD3	2.46	0.43
2:E:66:ILE:O	2:E:72:ARG:HA	2.19	0.43
1:A:81:SER:OG	1:C:82:ASP:OD2	2.14	0.43
1:A:820:LEU:HD23	1:A:820:LEU:HA	1.81	0.43
1:B:865:LEU:HD13	1:B:881:HIS:CD2	2.54	0.43
1:B:977:LYS:HG2	1:B:1005:ILE:O	2.19	0.43
1:A:588:LEU:CD1	1:A:612:ILE:HG23	2.45	0.42
1:A:852:HIS:HD1	1:A:852:HIS:C	2.23	0.42
1:B:277:SER:OG	1:B:285:ARG:NH1	2.52	0.42
1:C:117:ILE:HG22	1:C:121:ILE:HD12	2.01	0.42
1:C:236:GLN:O	1:C:239:SER:HB3	2.19	0.42
1:D:59:TRP:CH2	1:D:185:LEU:HD13	2.53	0.42
1:D:147:LYS:NZ	1:D:165:ARG:HH22	2.17	0.42
1:D:246:ILE:HG12	1:D:269:ILE:CD1	2.29	0.42
2:E:121:TRP:HD1	2:E:122:SER:N	2.17	0.42
1:A:843:PRO:HD3	1:A:871:ILE:HB	2.01	0.42
1:B:24:ASN:O	1:B:28:GLU:HG2	2.19	0.42
1:B:155:GLU:OE1	1:B:199:LEU:HB2	2.19	0.42
1:B:347:VAL:HG12	1:B:397:ALA:CB	2.37	0.42
1:B:976:MET:O	1:B:980:VAL:HG22	2.19	0.42
1:C:54:SER:OG	1:C:137:LEU:HD21	2.19	0.42
1:C:154:ALA:HB3	1:C:157:ASP:OD1	2.20	0.42
1:A:1004:PHE:CZ	1:B:985:LYS:HD3	2.54	0.42
1:B:432:ILE:CG1	1:B:458:ILE:HG23	2.50	0.42
1:B:966:LEU:HD12	1:B:966:LEU:O	2.20	0.42
1:C:44:PHE:CE1	1:C:214:VAL:HB	2.55	0.42
1:C:235:LEU:HD13	1:D:199:LEU:HD21	2.01	0.42
1:C:282:TYR:O	1:C:286:TYR:HD1	2.01	0.42
1:D:275:ILE:HD12	1:D:276:ASP:O	2.19	0.42
1:A:145:ARG:NH1	1:A:147:LYS:HE2	2.34	0.42
1:A:809:LYS:HG3	1:A:843:PRO:HB2	2.00	0.42
1:B:304:LYS:H	1:B:304:LYS:HG2	1.65	0.42
1:D:155:GLU:OE1	1:D:199:LEU:HB2	2.19	0.42
1:D:220:LEU:HD13	1:D:245:PHE:CD1	2.54	0.42
1:A:882:GLU:OE2	1:A:886:ILE:HD11	2.20	0.42
1:B:428:GLN:OE1	1:B:429:SER:N	2.52	0.42
1:B:454:LEU:O	1:B:458:ILE:HG13	2.18	0.42
1:B:821:SER:HB3	1:B:846:SER:OG	2.20	0.42
1:D:53:LEU:HD13	1:D:286:TYR:CD2	2.54	0.42

*Continued on next page...*

*Continued from previous page...*

Atom-1	Atom-2	Interatomic distance (Å)	Clash overlap (Å)
1:A:56:TYR:CG	1:A:57:PRO:HD2	2.54	0.42
1:A:407:ILE:HG21	1:A:589:TYR:CD1	2.54	0.42
1:B:174:PHE:CD1	1:B:178:PHE:HA	2.55	0.42
1:B:322:LEU:CD1	1:B:325:ILE:HD11	2.40	0.42
1:B:442:LEU:HD22	1:B:450:GLU:HB2	2.00	0.42
1:B:866:MET:CE	1:B:866:MET:CA	2.93	0.42
1:C:59:TRP:HA	1:C:59:TRP:CE3	2.54	0.42
1:C:256:GLU:HA	1:C:256:GLU:OE1	2.20	0.42
1:D:220:LEU:HD13	1:D:245:PHE:CE1	2.54	0.42
1:A:959:LEU:HD13	1:A:984:LEU:CD2	2.42	0.42
1:C:59:TRP:CZ3	1:C:62:LEU:HB3	2.54	0.42
1:C:109:GLN:O	1:C:109:GLN:CD	2.58	0.42
1:D:70:LEU:HD21	1:D:94:VAL:CG2	2.50	0.42
2:E:20:ILE:O	2:E:20:ILE:HG13	2.20	0.42
1:A:101:ASP:OD2	1:A:179:LYS:NZ	2.45	0.42
1:A:184:VAL:HG13	1:A:189:ASP:CB	2.47	0.42
1:A:449:GLU:HG3	1:A:511:PHE:CE1	2.54	0.42
1:A:502:ARG:NH1	1:A:503:HIS:O	2.53	0.42
1:B:22:LEU:CD2	1:B:26:VAL:HG12	2.50	0.42
1:B:631:ILE:O	1:B:635:GLY:HA2	2.20	0.42
1:B:808:ILE:O	1:B:812:GLU:N	2.51	0.42
1:B:833:LYS:HD2	1:B:833:LYS:HA	1.75	0.42
1:B:833:LYS:O	1:B:836:ASP:OD1	2.38	0.42
1:C:33:ILE:HG21	1:C:293:LEU:CD2	2.47	0.42
1:C:229:LEU:HD13	1:C:264:LYS:HB3	2.02	0.42
1:C:233:ARG:NH1	1:C:233:ARG:HG2	2.35	0.42
2:E:118:TYR:HB2	2:E:121:TRP:CZ2	2.55	0.42
1:A:881:HIS:CA	1:A:884:LEU:HD12	2.45	0.42
1:B:220:LEU:HD23	1:B:220:LEU:HA	1.88	0.42
1:B:436:TYR:OH	1:B:473:LEU:HB3	2.19	0.42
1:B:884:LEU:O	1:B:887:GLU:OE1	2.37	0.42
1:C:50:VAL:HG22	1:C:117:ILE:HG21	2.01	0.42
1:C:215:PHE:N	1:C:244:PHE:O	2.35	0.42
1:D:33:ILE:HD12	1:D:293:LEU:HD11	2.01	0.42
2:E:44:PHE:O	2:E:114:LYS:N	2.46	0.42
1:A:61:ARG:HB3	1:A:107:PHE:CZ	2.55	0.42
1:A:551:LEU:HD11	1:A:608:PHE:HA	2.02	0.42
1:A:669:ARG:O	1:A:994:LYS:HG2	2.20	0.42
1:A:827:LEU:HD21	1:A:838:LEU:CD1	2.50	0.42
1:A:873:LEU:HD13	1:A:873:LEU:C	2.41	0.42
1:A:874:ILE:O	1:A:874:ILE:HG13	2.19	0.42

*Continued on next page...*

*Continued from previous page...*

Atom-1	Atom-2	Interatomic distance (Å)	Clash overlap (Å)
1:A:911:ASP:OD1	1:A:911:ASP:N	2.52	0.42
1:A:944:VAL:HG23	1:A:945:ASP:OD2	2.20	0.42
1:A:967:LEU:HD23	1:A:967:LEU:HA	1.95	0.42
1:B:834:GLN:O	1:B:838:LEU:HD12	2.20	0.42
1:B:859:VAL:O	1:B:859:VAL:HG13	2.20	0.42
1:B:873:LEU:C	1:B:873:LEU:HD23	2.40	0.42
1:B:933:PHE:O	1:B:936:MET:HE1	2.19	0.42
2:E:123:HIS:CG	2:E:124:PRO:HD2	2.55	0.42
1:A:186:LYS:HE3	1:A:186:LYS:HB2	1.86	0.41
1:A:889:LEU:HD13	1:A:933:PHE:CD2	2.54	0.41
1:A:996:TYR:OH	1:B:632:ASP:OD1	2.35	0.41
1:B:594:PHE:O	1:B:598:ASN:HB2	2.20	0.41
1:B:827:LEU:HD21	1:B:834:GLN:CB	2.50	0.41
1:B:839:PHE:CZ	1:B:873:LEU:HD12	2.55	0.41
1:B:920:TYR:OH	1:B:928:SER:HA	2.19	0.41
1:A:308:VAL:HG13	1:A:356:TYR:CB	2.50	0.41
1:A:601:TRP:HA	1:A:601:TRP:CE3	2.56	0.41
1:A:1004:PHE:HD1	1:A:1004:PHE:HA	1.74	0.41
1:B:86:ARG:HD3	1:D:261:TYR:OH	2.20	0.41
1:B:544:PHE:HZ	1:B:594:PHE:CE2	2.38	0.41
1:B:687:TYR:OH	1:B:715:GLU:OE2	2.26	0.41
1:B:914:SER:O	1:B:918:ILE:HD12	2.20	0.41
1:D:208:ILE:HD12	1:D:228:LEU:HD11	2.02	0.41
1:A:771:ILE:HD13	1:A:771:ILE:N	2.35	0.41
1:A:824:THR:HA	1:A:827:LEU:CG	2.50	0.41
1:A:882:GLU:O	1:A:886:ILE:HG12	2.19	0.41
1:A:967:LEU:HB3	1:A:1005:ILE:HD11	2.03	0.41
1:A:985:LYS:HB3	1:A:985:LYS:HE3	1.73	0.41
1:B:64:ASP:OD1	1:B:64:ASP:C	2.59	0.41
1:B:912:TYR:CE2	2:E:78:GLU:HG3	2.55	0.41
1:B:967:LEU:HB3	1:B:1005:ILE:HD11	2.02	0.41
1:D:114:THR:OG1	1:D:144:LYS:NZ	2.53	0.41
1:A:667:LEU:HB3	1:A:673:ILE:HD11	2.02	0.41
1:A:695:ILE:N	1:A:695:ILE:HD13	2.35	0.41
1:C:232:VAL:HG13	1:C:240:PHE:CZ	2.55	0.41
1:D:45:PHE:HD2	1:D:218:TYR:CE2	2.37	0.41
1:D:63:VAL:HG12	1:D:79:TYR:CE1	2.56	0.41
2:E:102:LEU:O	2:E:106:ILE:HG12	2.20	0.41
1:A:92:TYR:CE1	1:A:97:GLU:HA	2.55	0.41
1:A:110:VAL:HG23	1:A:110:VAL:O	2.20	0.41
1:A:588:LEU:CD1	1:A:612:ILE:HD13	2.46	0.41

*Continued on next page...*

*Continued from previous page...*

Atom-1	Atom-2	Interatomic distance (Å)	Clash overlap (Å)
1:A:781:LEU:HB3	1:A:785:LYS:HZ2	1.81	0.41
1:B:64:ASP:HA	1:B:79:TYR:CZ	2.55	0.41
1:B:122:LEU:HD13	1:B:122:LEU:HA	1.87	0.41
1:B:929:LYS:O	1:B:929:LYS:HG3	2.20	0.41
1:C:129:VAL:O	1:C:168:LEU:N	2.46	0.41
1:C:252:PRO:HA	1:C:272:ALA:HB3	2.03	0.41
1:D:252:PRO:HB3	1:D:273:SER:OG	2.21	0.41
1:B:60:TRP:HB3	1:B:84:TYR:OH	2.20	0.41
1:B:262:GLU:HA	1:B:266:LEU:O	2.20	0.41
1:B:813:LYS:HD2	1:B:814:ASN:OD1	2.21	0.41
1:B:827:LEU:HD22	1:B:831:LYS:HG3	2.03	0.41
1:D:220:LEU:HA	1:D:245:PHE:CZ	2.56	0.41
1:D:246:ILE:HA	1:D:269:ILE:HG13	2.02	0.41
1:A:30:ILE:CD1	1:A:292:LEU:HD11	2.50	0.41
1:A:86:ARG:HH11	1:A:86:ARG:HG2	1.86	0.41
1:B:22:LEU:HB3	1:B:27:VAL:HG13	2.02	0.41
1:B:651:ASP:O	1:B:655:ILE:HG13	2.20	0.41
1:B:913:MET:HE1	1:B:940:TYR:HD2	1.84	0.41
1:B:1003:TYR:HD2	1:B:1005:ILE:HD11	1.84	0.41
1:C:152:ILE:HG23	1:C:157:ASP:HB2	2.03	0.41
1:C:278:ASN:HB2	1:C:281:ASP:OD1	2.20	0.41
1:D:103:ILE:O	1:D:107:PHE:HB2	2.21	0.41
1:D:281:ASP:O	1:D:284:GLU:HG2	2.19	0.41
2:E:29:PHE:HD2	2:E:44:PHE:HE1	1.69	0.41
1:A:134:TYR:CZ	1:A:185:LEU:HD23	2.56	0.41
1:A:216:ILE:HD12	1:A:290:MET:HE2	2.03	0.41
1:A:318:PRO:HB3	1:A:538:LYS:CE	2.51	0.41
1:A:512:LEU:HA	1:A:515:ILE:HG12	2.03	0.41
1:B:70:LEU:HD21	1:B:91:PHE:CA	2.50	0.41
1:B:105:LYS:HE3	1:B:178:PHE:HB2	2.03	0.41
1:B:780:VAL:HG21	1:B:819:ARG:HB2	2.03	0.41
1:B:839:PHE:CE2	1:B:857:LYS:HE3	2.54	0.41
1:B:940:TYR:CD1	1:B:940:TYR:C	2.92	0.41
1:D:294:ILE:O	1:D:297:GLN:HG2	2.20	0.41
1:A:117:ILE:HD13	1:A:286:TYR:CB	2.51	0.41
1:A:616:MET:O	1:A:620:ILE:HG13	2.21	0.41
1:A:777:ASP:HA	1:A:819:ARG:HH22	1.85	0.41
1:A:789:GLN:NE2	1:A:831:LYS:HA	2.36	0.41
1:A:929:LYS:O	1:A:929:LYS:HG2	2.20	0.41
1:A:950:ASP:O	1:A:953:LYS:HG2	2.21	0.41
1:B:17:GLU:HG3	1:B:18:VAL:N	2.36	0.41

*Continued on next page...*

*Continued from previous page...*

Atom-1	Atom-2	Interatomic distance (Å)	Clash overlap (Å)
1:B:42:LEU:O	1:B:126:PRO:HA	2.20	0.41
1:B:65:LYS:HD3	1:B:65:LYS:N	2.36	0.41
1:B:67:HIS:HB3	1:B:79:TYR:OH	2.21	0.41
1:B:70:LEU:HD21	1:B:91:PHE:HA	2.03	0.41
1:B:281:ASP:CG	1:B:284:GLU:HB2	2.41	0.41
1:B:363:LEU:HD21	1:B:370:ARG:CB	2.51	0.41
1:B:717:LYS:HD3	1:B:749:LEU:HD13	2.03	0.41
1:C:57:PRO:HB3	1:C:107:PHE:HE2	1.85	0.41
1:C:262:GLU:OE2	1:C:267:ARG:HA	2.20	0.41
1:D:70:LEU:HD21	1:D:94:VAL:HG21	2.03	0.41
1:A:91:PHE:CZ	1:A:103:ILE:HD12	2.56	0.41
1:A:139:ASP:OD2	1:A:169:LYS:NZ	2.41	0.41
1:B:118:HIS:O	1:B:122:LEU:HD23	2.21	0.41
1:B:222:ASP:OD1	1:B:222:ASP:C	2.57	0.41
1:B:705:ASN:O	1:B:709:TYR:HB3	2.20	0.41
1:B:942:PHE:CE1	1:B:976:MET:SD	3.14	0.41
1:C:174:PHE:CD1	1:C:178:PHE:HA	2.56	0.41
1:D:237:LYS:HE3	1:D:237:LYS:HB2	1.90	0.41
1:A:318:PRO:HB3	1:A:538:LYS:HE3	2.02	0.40
1:B:61:ARG:C	1:B:65:LYS:HE3	2.42	0.40
1:B:282:TYR:O	1:B:286:TYR:HD1	2.04	0.40
1:B:866:MET:SD	1:B:919:TRP:HH2	2.44	0.40
1:B:867:ASN:O	1:B:871:ILE:HG12	2.21	0.40
1:C:44:PHE:HD2	1:C:126:PRO:HB3	1.86	0.40
1:C:105:LYS:CD	1:C:109:GLN:HG2	2.51	0.40
1:C:295:GLU:HA	1:C:295:GLU:OE1	2.21	0.40
1:D:42:LEU:CD1	1:D:214:VAL:HG23	2.51	0.40
2:E:53:ILE:O	2:E:53:ILE:HG22	2.20	0.40
1:A:53:LEU:HD12	1:A:53:LEU:HA	1.78	0.40
1:A:62:LEU:HD11	1:A:107:PHE:CB	2.52	0.40
1:A:517:ARG:O	1:A:520:THR:HG22	2.21	0.40
1:A:687:TYR:CZ	1:A:691:ILE:HD11	2.56	0.40
1:A:955:ILE:HG12	1:A:958:TRP:CZ2	2.56	0.40
1:A:980:VAL:HG21	1:A:1005:ILE:HG22	2.03	0.40
1:B:313:TYR:HA	1:B:384:LEU:HD21	2.04	0.40
1:C:249:ASP:HB3	1:C:250:PRO:HD2	2.03	0.40
1:D:274:LEU:CD2	1:D:288:ALA:HB1	2.51	0.40
1:A:459:ILE:HG23	1:A:471:TYR:CE1	2.56	0.40
1:A:615:SER:O	1:A:619:LEU:HG	2.22	0.40
1:A:749:LEU:HD12	1:A:749:LEU:HA	1.81	0.40
1:A:756:VAL:O	1:A:759:GLU:HG3	2.22	0.40

*Continued on next page...*

Continued from previous page...

Atom-1	Atom-2	Interatomic distance (Å)	Clash overlap (Å)
1:A:939:GLN:HE21	1:A:962:TYR:HE1	1.70	0.40
1:B:208:ILE:HD13	1:B:228:LEU:HD22	2.03	0.40
1:B:440:PHE:CB	1:B:599:CYS:HB3	2.51	0.40
1:B:667:LEU:C	1:B:673:ILE:HD11	2.41	0.40
1:C:154:ALA:N	1:C:157:ASP:OD1	2.54	0.40
1:D:131:THR:OG1	1:D:133:ASN:ND2	2.55	0.40
2:E:45:VAL:HG22	2:E:115:GLU:HG2	2.03	0.40
1:A:43:VAL:HG22	1:A:128:HIS:HB2	2.04	0.40
1:A:326:ARG:HG3	1:A:594:PHE:CB	2.51	0.40
1:B:60:TRP:HB2	3:B:1101:NAD:H5N	1.98	0.40
1:B:213:ILE:HB	1:B:243:PRO:HB3	2.04	0.40
1:B:398:LYS:HG2	1:B:399:ASP:N	2.37	0.40
1:D:120:LYS:HB3	1:D:290:MET:CG	2.52	0.40
1:D:153:SER:HB3	1:D:169:LYS:HD3	2.03	0.40
1:D:292:LEU:HD13	1:D:292:LEU:C	2.41	0.40
1:A:53:LEU:HD23	1:A:117:ILE:CD1	2.51	0.40
1:A:186:LYS:H	1:A:186:LYS:HG3	1.73	0.40
1:A:459:ILE:HD13	1:A:474:SER:HB2	2.04	0.40
1:A:827:LEU:HD11	1:A:838:LEU:HD13	2.02	0.40
1:A:987:ARG:NE	1:A:987:ARG:HA	2.36	0.40
1:B:66:TYR:OH	1:B:104:LEU:HD23	2.22	0.40
1:B:763:LYS:HB2	2:E:124:PRO:HB3	2.03	0.40
1:B:912:TYR:O	1:B:916:PHE:CD2	2.75	0.40
1:B:923:GLU:OE2	1:B:923:GLU:CA	2.67	0.40
1:B:934:ILE:HD11	1:B:944:VAL:CG1	2.45	0.40

There are no symmetry-related clashes.

## 5.3 Torsion angles [i](#)

### 5.3.1 Protein backbone [i](#)

In the following table, the Percentiles column shows the percent Ramachandran outliers of the chain as a percentile score with respect to all PDB entries followed by that with respect to all EM entries.

The Analysed column shows the number of residues for which the backbone conformation was analysed, and the total number of residues.

Mol	Chain	Analysed	Favoured	Allowed	Outliers	Percentiles
1	A	933/1005 (93%)	915 (98%)	18 (2%)	0	100 100

Continued on next page...



*Continued from previous page...*

Mol	Chain	Analysed	Favoured	Allowed	Outliers	Percentiles	
1	B	939/1005 (93%)	921 (98%)	18 (2%)	0	100	100
1	C	267/1005 (27%)	259 (97%)	8 (3%)	0	100	100
1	D	264/1005 (26%)	259 (98%)	5 (2%)	0	100	100
2	E	114/146 (78%)	108 (95%)	6 (5%)	0	100	100
All	All	2517/4166 (60%)	2462 (98%)	55 (2%)	0	100	100

There are no Ramachandran outliers to report.

### 5.3.2 Protein sidechains [i](#)

In the following table, the Percentiles column shows the percent sidechain outliers of the chain as a percentile score with respect to all PDB entries followed by that with respect to all EM entries.

The Analysed column shows the number of residues for which the sidechain conformation was analysed, and the total number of residues.

Mol	Chain	Analysed	Rotameric	Outliers	Percentiles	
1	A	870/923 (94%)	821 (94%)	49 (6%)	21	47
1	B	877/923 (95%)	825 (94%)	52 (6%)	19	45
1	C	245/923 (26%)	228 (93%)	17 (7%)	15	38
1	D	242/923 (26%)	224 (93%)	18 (7%)	13	35
2	E	111/131 (85%)	102 (92%)	9 (8%)	11	30
All	All	2345/3823 (61%)	2200 (94%)	145 (6%)	22	43

All (145) residues with a non-rotameric sidechain are listed below:

Mol	Chain	Res	Type
1	A	22	LEU
1	A	45	PHE
1	A	61	ARG
1	A	64	ASP
1	A	84	TYR
1	A	111	ASP
1	A	134	TYR
1	A	162	THR
1	A	301	PHE
1	A	335	GLU

*Continued on next page...*

*Continued from previous page...*

<b>Mol</b>	<b>Chain</b>	<b>Res</b>	<b>Type</b>
1	A	342	VAL
1	A	363	LEU
1	A	366	SER
1	A	370	ARG
1	A	428	GLN
1	A	434	ASP
1	A	484	SER
1	A	491	GLN
1	A	504	TYR
1	A	510	GLU
1	A	526	ASP
1	A	533	PHE
1	A	567	SER
1	A	590	ASP
1	A	629	ARG
1	A	674	ASP
1	A	709	TYR
1	A	757	TRP
1	A	759	GLU
1	A	765	ASN
1	A	769	LYS
1	A	770	SER
1	A	795	SER
1	A	813	LYS
1	A	831	LYS
1	A	856	PHE
1	A	864	ASP
1	A	874	ILE
1	A	915	THR
1	A	927	ASN
1	A	936	MET
1	A	938	ASP
1	A	945	ASP
1	A	961	ASN
1	A	964	ASP
1	A	974	LYS
1	A	975	HIS
1	A	994	LYS
1	A	1004	PHE
1	B	10	ARG
1	B	25	ASN
1	B	38	ARG

*Continued on next page...*

*Continued from previous page...*

<b>Mol</b>	<b>Chain</b>	<b>Res</b>	<b>Type</b>
1	B	45	PHE
1	B	54	SER
1	B	84	TYR
1	B	114	THR
1	B	134	TYR
1	B	135	ASP
1	B	139	ASP
1	B	145	ARG
1	B	182	ASN
1	B	236	GLN
1	B	279	GLU
1	B	284	GLU
1	B	299	ASN
1	B	342	VAL
1	B	349	HIS
1	B	375	LYS
1	B	419	ASP
1	B	428	GLN
1	B	502	ARG
1	B	504	TYR
1	B	508	THR
1	B	509	ASP
1	B	564	LYS
1	B	590	ASP
1	B	669	ARG
1	B	670	SER
1	B	674	ASP
1	B	722	PHE
1	B	729	SER
1	B	744	PHE
1	B	750	ASP
1	B	765	ASN
1	B	781	LEU
1	B	786	HIS
1	B	801	SER
1	B	833	LYS
1	B	839	PHE
1	B	887	GLU
1	B	892	ARG
1	B	914	SER
1	B	933	PHE
1	B	936	MET

*Continued on next page...*

*Continued from previous page...*

<b>Mol</b>	<b>Chain</b>	<b>Res</b>	<b>Type</b>
1	B	940	TYR
1	B	944	VAL
1	B	957	SER
1	B	969	LYS
1	B	975	HIS
1	B	985	LYS
1	B	994	LYS
1	C	51	SER
1	C	61	ARG
1	C	62	LEU
1	C	84	TYR
1	C	103	ILE
1	C	119	ASP
1	C	124	MET
1	C	134	TYR
1	C	144	LYS
1	C	145	ARG
1	C	182	ASN
1	C	191	LEU
1	C	233	ARG
1	C	237	LYS
1	C	248	THR
1	C	279	GLU
1	C	285	ARG
1	D	45	PHE
1	D	56	TYR
1	D	84	TYR
1	D	115	ASN
1	D	125	ASN
1	D	134	TYR
1	D	139	ASP
1	D	145	ARG
1	D	179	LYS
1	D	183	VAL
1	D	233	ARG
1	D	236	GLN
1	D	238	ASP
1	D	249	ASP
1	D	273	SER
1	D	276	ASP
1	D	278	ASN
1	D	280	TYR

*Continued on next page...*

*Continued from previous page...*

Mol	Chain	Res	Type
2	E	11	THR
2	E	71	LYS
2	E	72	ARG
2	E	81	PHE
2	E	103	SER
2	E	105	ARG
2	E	108	SER
2	E	115	GLU
2	E	121	TRP

Sometimes sidechains can be flipped to improve hydrogen bonding and reduce clashes. All (6) such sidechains are listed below:

Mol	Chain	Res	Type
1	A	115	ASN
1	A	475	GLN
1	B	115	ASN
1	B	797	ASN
1	D	115	ASN
1	D	118	HIS

### 5.3.3 RNA [i](#)

There are no RNA molecules in this entry.

### 5.4 Non-standard residues in protein, DNA, RNA chains [i](#)

There are no non-standard protein/DNA/RNA residues in this entry.

### 5.5 Carbohydrates [i](#)

There are no monosaccharides in this entry.

### 5.6 Ligand geometry [i](#)

4 ligands are modelled in this entry.

In the following table, the Counts columns list the number of bonds (or angles) for which Mogul statistics could be retrieved, the number of bonds (or angles) that are observed in the model and the number of bonds (or angles) that are defined in the Chemical Component Dictionary. The

Link column lists molecule types, if any, to which the group is linked. The Z score for a bond length (or angle) is the number of standard deviations the observed value is removed from the expected value. A bond length (or angle) with  $|Z| > 2$  is considered an outlier worth inspection. RMSZ is the root-mean-square of all Z scores of the bond lengths (or angles).

Mol	Type	Chain	Res	Link	Bond lengths			Bond angles		
					Counts	RMSZ	# Z  > 2	Counts	RMSZ	# Z  > 2
3	NAD	D	1101	-	42,48,48	0.93	2 (4%)	50,73,73	1.37	7 (14%)
3	NAD	B	1101	-	42,48,48	1.04	3 (7%)	50,73,73	1.43	7 (14%)
3	NAD	C	1101	-	42,48,48	1.08	2 (4%)	50,73,73	1.30	6 (12%)
3	NAD	A	1101	-	42,48,48	1.12	2 (4%)	50,73,73	1.47	7 (14%)

In the following table, the Chirals column lists the number of chiral outliers, the number of chiral centers analysed, the number of these observed in the model and the number defined in the Chemical Component Dictionary. Similar counts are reported in the Torsion and Rings columns. '-' means no outliers of that kind were identified.

Mol	Type	Chain	Res	Link	Chirals	Torsions	Rings
3	NAD	D	1101	-	-	13/26/62/62	0/5/5/5
3	NAD	B	1101	-	-	16/26/62/62	0/5/5/5
3	NAD	C	1101	-	-	10/26/62/62	0/5/5/5
3	NAD	A	1101	-	-	10/26/62/62	0/5/5/5

All (9) bond length outliers are listed below:

Mol	Chain	Res	Type	Atoms	Z	Observed(Å)	Ideal(Å)
3	A	1101	NAD	C2B-C1B	-3.47	1.48	1.53
3	B	1101	NAD	C2B-C1B	-3.40	1.48	1.53
3	C	1101	NAD	C2B-C1B	-2.66	1.49	1.53
3	A	1101	NAD	O4B-C4B	-2.46	1.39	1.45
3	B	1101	NAD	O4B-C4B	-2.39	1.39	1.45
3	D	1101	NAD	C2B-C1B	-2.17	1.50	1.53
3	D	1101	NAD	O4D-C1D	2.13	1.44	1.41
3	C	1101	NAD	C4A-N3A	-2.06	1.32	1.35
3	B	1101	NAD	C5A-N7A	-2.00	1.32	1.39

All (27) bond angle outliers are listed below:

Mol	Chain	Res	Type	Atoms	Z	Observed(°)	Ideal(°)
3	A	1101	NAD	N3A-C2A-N1A	-4.18	122.14	128.68
3	B	1101	NAD	N3A-C2A-N1A	-4.06	122.33	128.68
3	A	1101	NAD	PN-O3-PA	-3.93	119.35	132.83

*Continued on next page...*

Continued from previous page...

Mol	Chain	Res	Type	Atoms	Z	Observed(°)	Ideal(°)
3	C	1101	NAD	N3A-C2A-N1A	-3.66	122.95	128.68
3	D	1101	NAD	O3B-C3B-C4B	-3.55	100.80	111.05
3	D	1101	NAD	N3A-C2A-N1A	-3.42	123.33	128.68
3	A	1101	NAD	C3B-C2B-C1B	3.13	105.69	100.98
3	C	1101	NAD	C4A-C5A-N7A	-3.02	106.25	109.40
3	B	1101	NAD	O4D-C1D-C2D	-3.01	102.52	106.93
3	B	1101	NAD	PN-O3-PA	-2.90	122.88	132.83
3	B	1101	NAD	C3B-C2B-C1B	2.86	105.28	100.98
3	C	1101	NAD	O4D-C1D-C2D	-2.83	102.78	106.93
3	C	1101	NAD	PN-O3-PA	-2.55	124.09	132.83
3	A	1101	NAD	C3D-C2D-C1D	2.46	104.68	100.98
3	B	1101	NAD	C4A-C5A-N7A	-2.42	106.87	109.40
3	D	1101	NAD	C4A-C5A-N7A	-2.41	106.89	109.40
3	D	1101	NAD	O3B-C3B-C2B	-2.28	104.45	111.82
3	B	1101	NAD	O5D-C5D-C4D	2.27	116.79	108.99
3	A	1101	NAD	C2N-C3N-C4N	2.26	120.82	118.26
3	C	1101	NAD	C5N-C4N-C3N	-2.26	117.67	120.34
3	A	1101	NAD	C4A-C5A-N7A	-2.25	107.05	109.40
3	D	1101	NAD	O4D-C4D-C5D	2.22	116.69	109.37
3	D	1101	NAD	PN-O3-PA	-2.18	125.34	132.83
3	A	1101	NAD	O2B-C2B-C1B	-2.16	102.88	110.85
3	C	1101	NAD	O4B-C1B-C2B	-2.15	103.79	106.93
3	B	1101	NAD	C2A-N1A-C6A	2.10	122.34	118.75
3	D	1101	NAD	C6N-N1N-C2N	-2.01	120.14	121.97

There are no chirality outliers.

All (49) torsion outliers are listed below:

Mol	Chain	Res	Type	Atoms
3	A	1101	NAD	C5B-O5B-PA-O2A
3	A	1101	NAD	C5D-O5D-PN-O1N
3	A	1101	NAD	C2D-C1D-N1N-C6N
3	B	1101	NAD	C5B-O5B-PA-O2A
3	B	1101	NAD	O4D-C4D-C5D-O5D
3	B	1101	NAD	O4D-C1D-N1N-C2N
3	B	1101	NAD	O4D-C1D-N1N-C6N
3	B	1101	NAD	C2D-C1D-N1N-C6N
3	B	1101	NAD	C2N-C3N-C7N-O7N
3	B	1101	NAD	C2N-C3N-C7N-N7N
3	C	1101	NAD	C5B-O5B-PA-O1A
3	C	1101	NAD	C5B-O5B-PA-O2A
3	C	1101	NAD	PN-O3-PA-O5B

Continued on next page...

*Continued from previous page...*

Mol	Chain	Res	Type	Atoms
3	C	1101	NAD	O4B-C4B-C5B-O5B
3	C	1101	NAD	O4D-C4D-C5D-O5D
3	C	1101	NAD	C2D-C1D-N1N-C2N
3	C	1101	NAD	C2D-C1D-N1N-C6N
3	D	1101	NAD	C5B-O5B-PA-O1A
3	D	1101	NAD	C5D-O5D-PN-O3
3	D	1101	NAD	C4D-C5D-O5D-PN
3	B	1101	NAD	C4N-C3N-C7N-O7N
3	B	1101	NAD	C4N-C3N-C7N-N7N
3	A	1101	NAD	O4B-C4B-C5B-O5B
3	A	1101	NAD	C3B-C4B-C5B-O5B
3	B	1101	NAD	C3D-C4D-C5D-O5D
3	C	1101	NAD	C3D-C4D-C5D-O5D
3	D	1101	NAD	O4B-C4B-C5B-O5B
3	D	1101	NAD	C3B-C4B-C5B-O5B
3	D	1101	NAD	O4D-C4D-C5D-O5D
3	B	1101	NAD	C4D-C5D-O5D-PN
3	D	1101	NAD	C3D-C4D-C5D-O5D
3	D	1101	NAD	PN-O3-PA-O1A
3	A	1101	NAD	O4D-C4D-C5D-O5D
3	A	1101	NAD	C5B-O5B-PA-O3
3	B	1101	NAD	C5B-O5B-PA-O3
3	D	1101	NAD	C5B-O5B-PA-O3
3	A	1101	NAD	C5B-O5B-PA-O1A
3	D	1101	NAD	C5B-O5B-PA-O2A
3	D	1101	NAD	C5D-O5D-PN-O1N
3	D	1101	NAD	PN-O3-PA-O2A
3	A	1101	NAD	C4D-C5D-O5D-PN
3	C	1101	NAD	C4D-C5D-O5D-PN
3	D	1101	NAD	PA-O3-PN-O2N
3	A	1101	NAD	C2D-C1D-N1N-C2N
3	B	1101	NAD	C2D-C1D-N1N-C2N
3	C	1101	NAD	C5B-O5B-PA-O3
3	B	1101	NAD	PN-O3-PA-O1A
3	B	1101	NAD	PN-O3-PA-O2A
3	B	1101	NAD	C5B-O5B-PA-O1A

There are no ring outliers.

4 monomers are involved in 52 short contacts:

Mol	Chain	Res	Type	Clashes	Symm-Clashes
3	D	1101	NAD	5	0

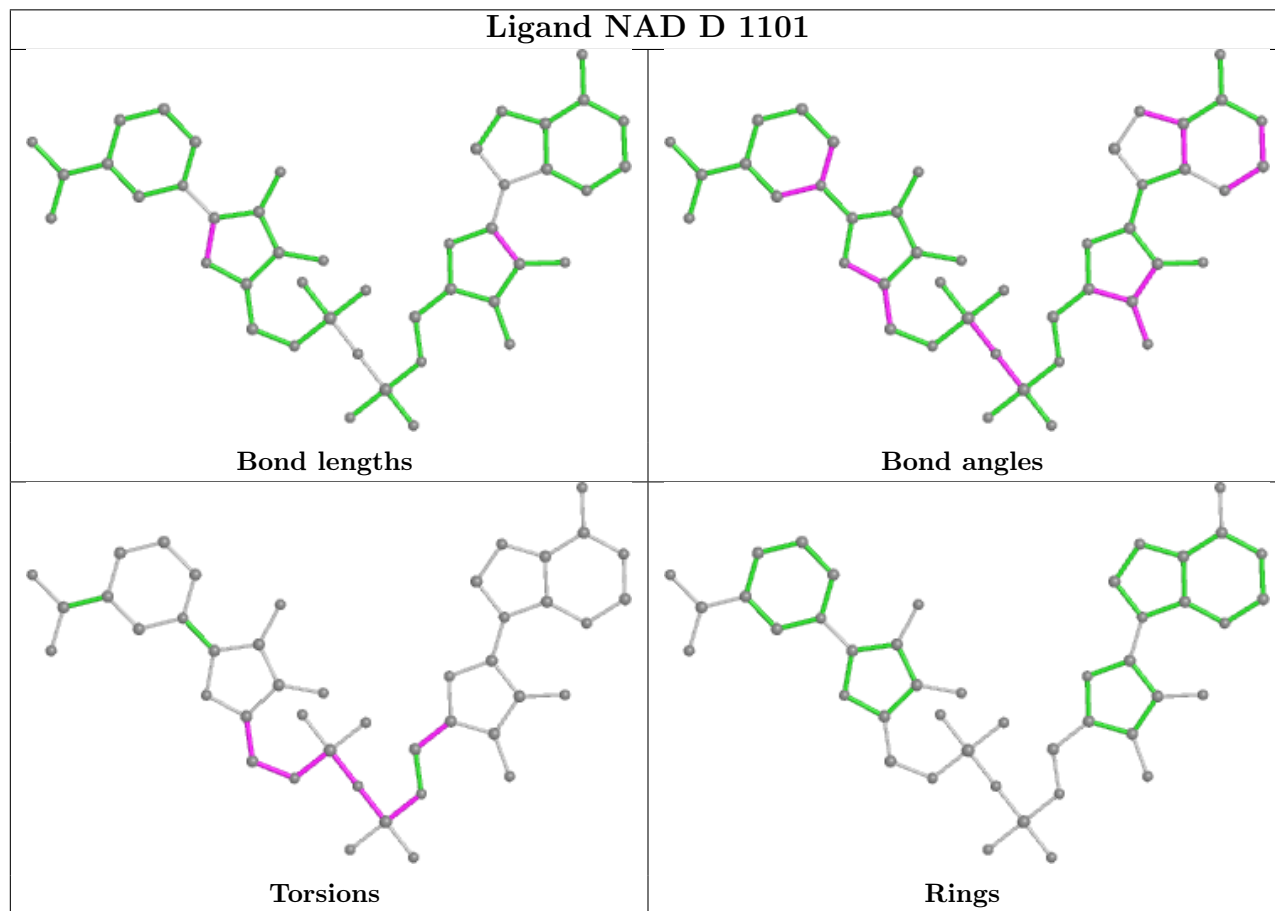
*Continued on next page...*

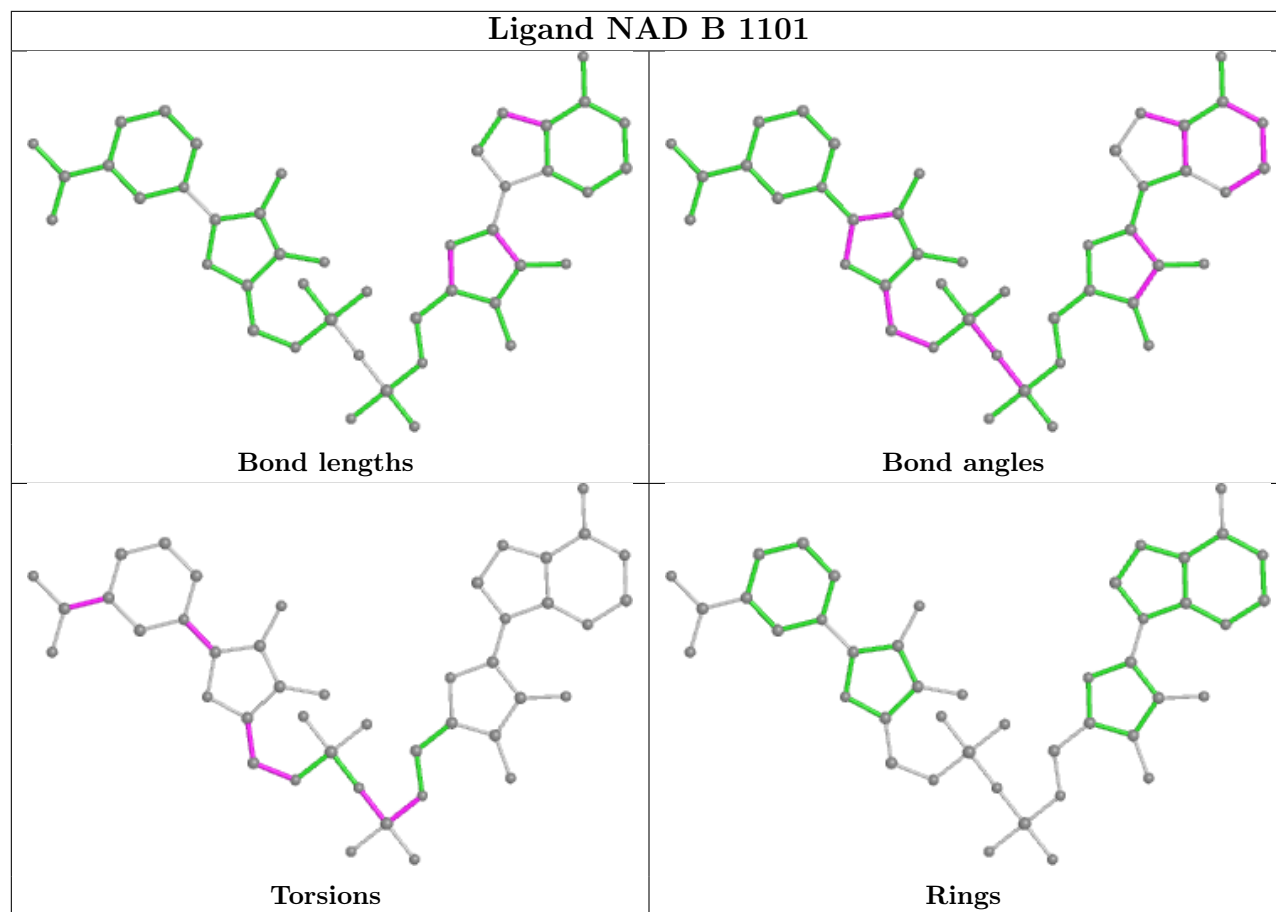


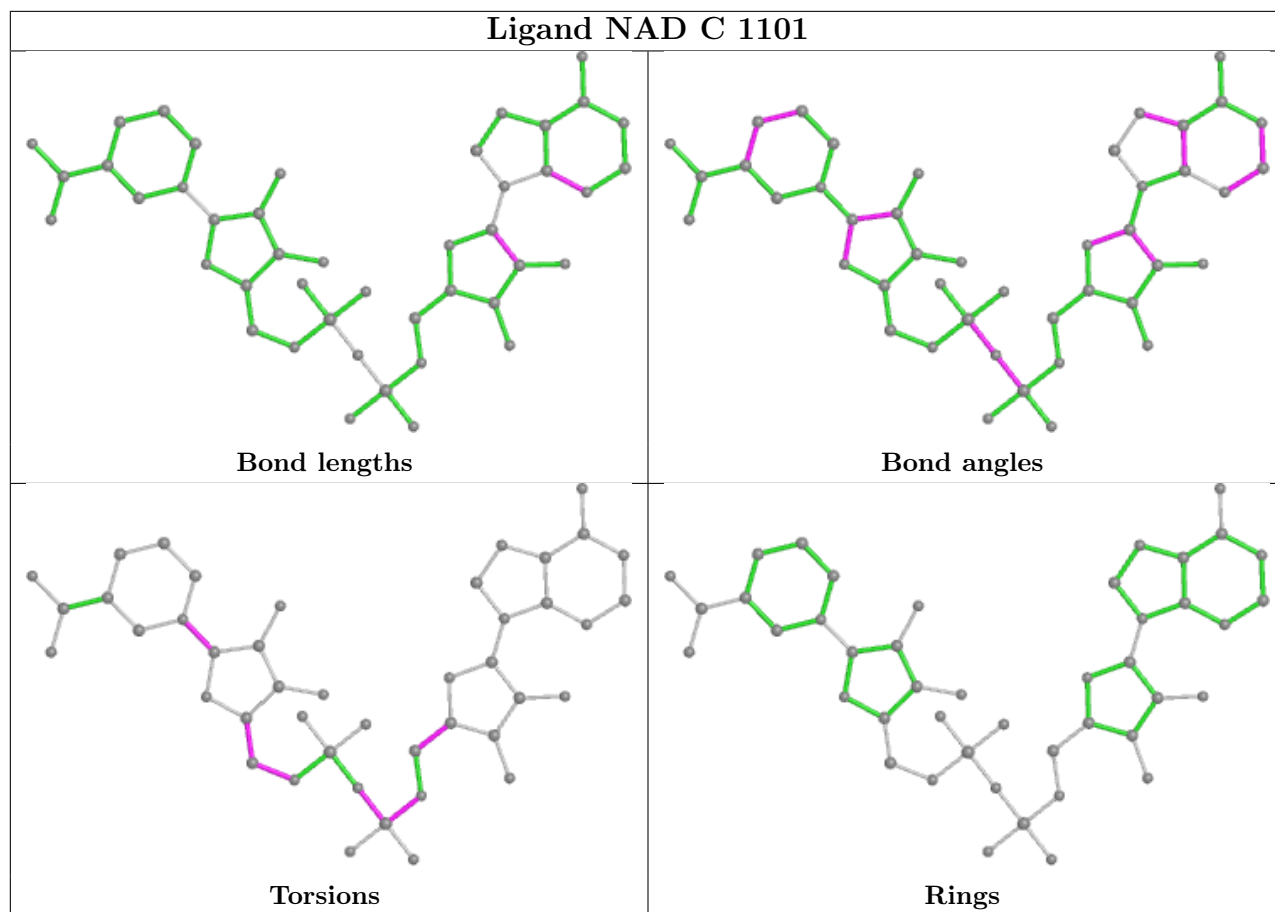
Continued from previous page...

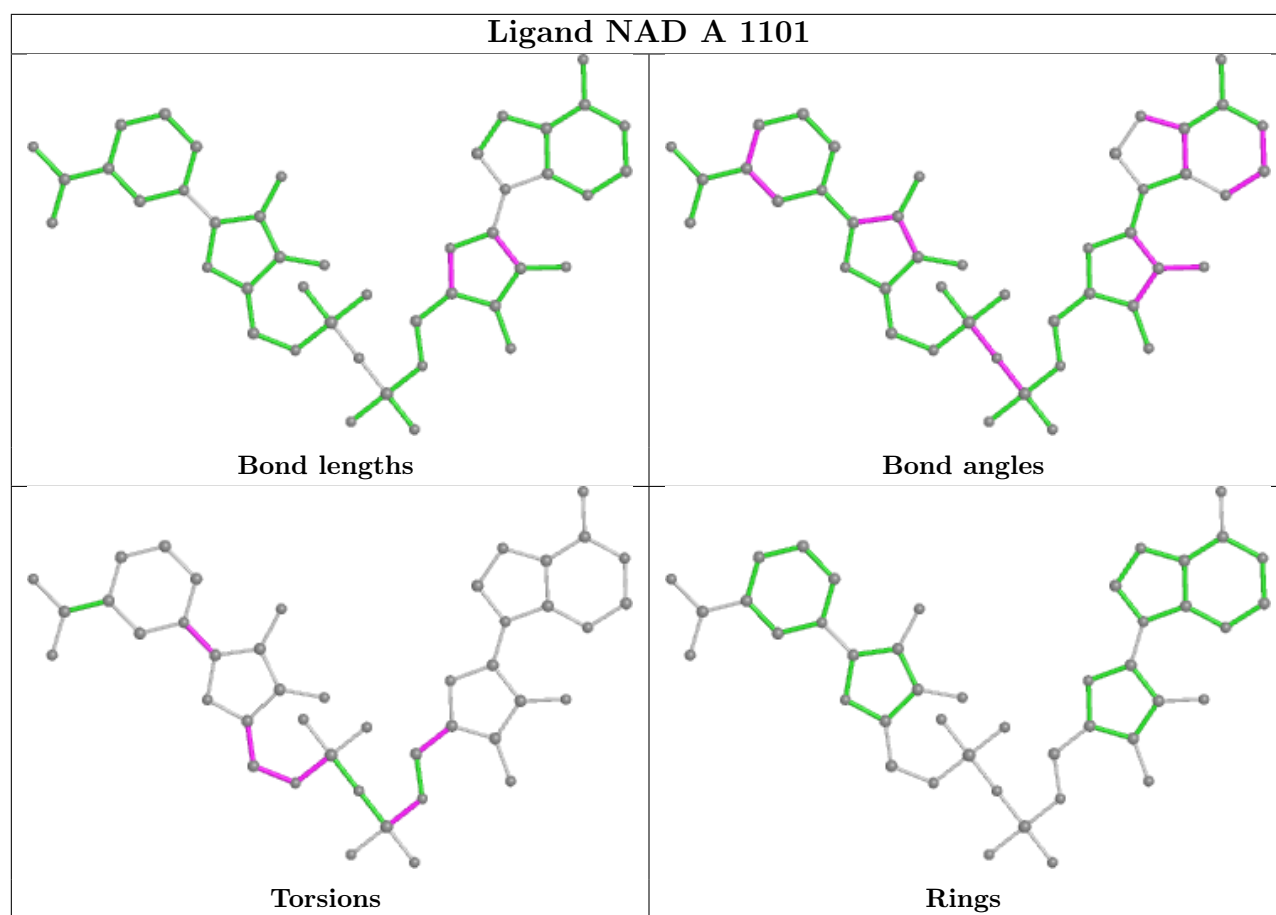
Mol	Chain	Res	Type	Clashes	Symm-Clashes
3	B	1101	NAD	20	0
3	C	1101	NAD	5	0
3	A	1101	NAD	22	0

The following is a two-dimensional graphical depiction of Mogul quality analysis of bond lengths, bond angles, torsion angles, and ring geometry for all instances of the Ligand of Interest. In addition, ligands with molecular weight > 250 and outliers as shown on the validation Tables will also be included. For torsion angles, if less than 5% of the Mogul distribution of torsion angles is within 10 degrees of the torsion angle in question, then that torsion angle is considered an outlier. Any bond that is central to one or more torsion angles identified as an outlier by Mogul will be highlighted in the graph. For rings, the root-mean-square deviation (RMSD) between the ring in question and similar rings identified by Mogul is calculated over all ring torsion angles. If the average RMSD is greater than 60 degrees and the minimal RMSD between the ring in question and any Mogul-identified rings is also greater than 60 degrees, then that ring is considered an outlier. The outliers are highlighted in purple. The color gray indicates Mogul did not find sufficient equivalents in the CSD to analyse the geometry.









## 5.7 Other polymers [i](#)

There are no such residues in this entry.

## 5.8 Polymer linkage issues [i](#)

There are no chain breaks in this entry.

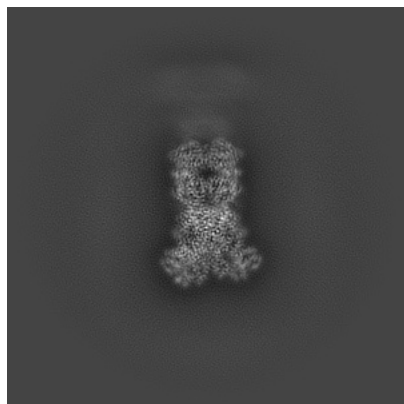
## 6 Map visualisation [i](#)

This section contains visualisations of the EMDB entry EMD-37926. These allow visual inspection of the internal detail of the map and identification of artifacts.

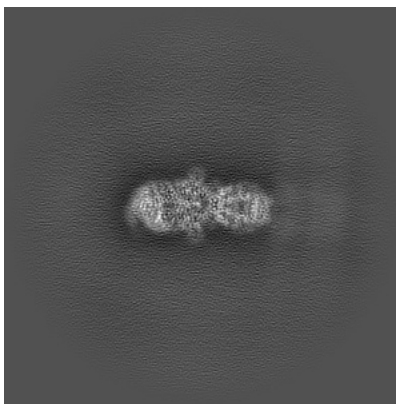
Images derived from a raw map, generated by summing the deposited half-maps, are presented below the corresponding image components of the primary map to allow further visual inspection and comparison with those of the primary map.

### 6.1 Orthogonal projections [i](#)

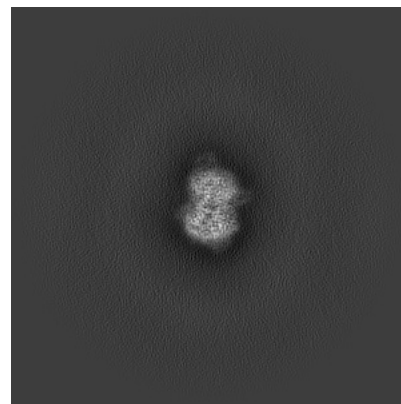
#### 6.1.1 Primary map



X

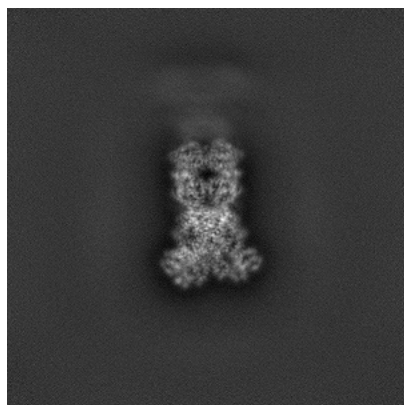


Y

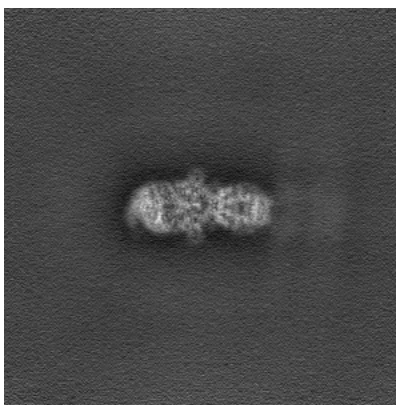


Z

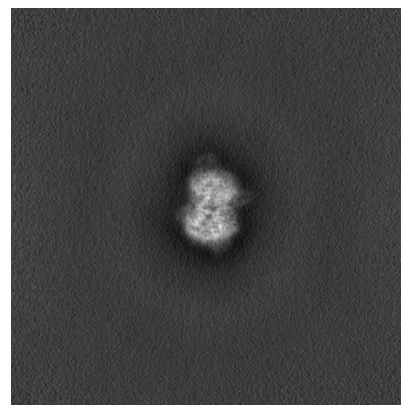
#### 6.1.2 Raw map



X



Y

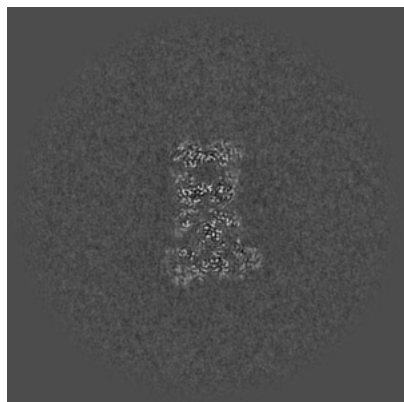


Z

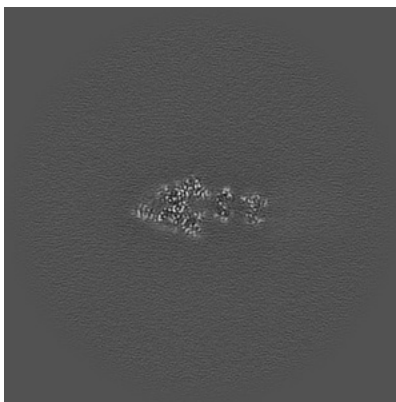
The images above show the map projected in three orthogonal directions.

## 6.2 Central slices [i](#)

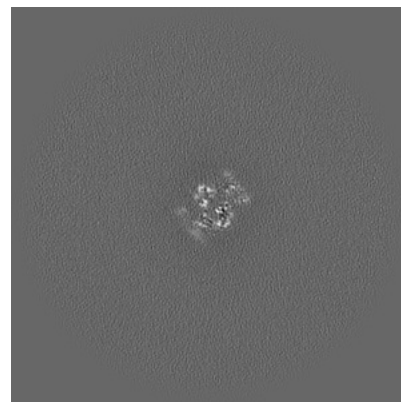
### 6.2.1 Primary map



X Index: 270

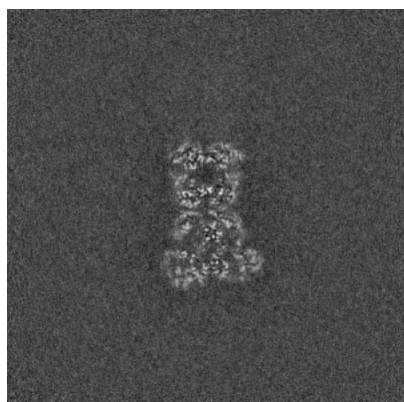


Y Index: 270

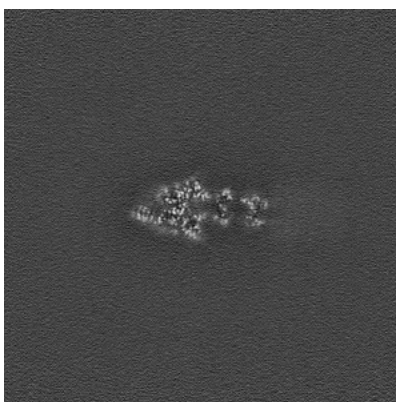


Z Index: 270

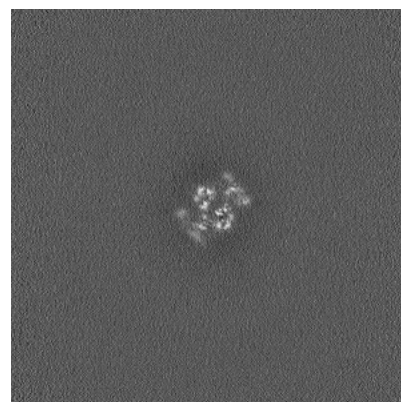
### 6.2.2 Raw map



X Index: 270



Y Index: 270

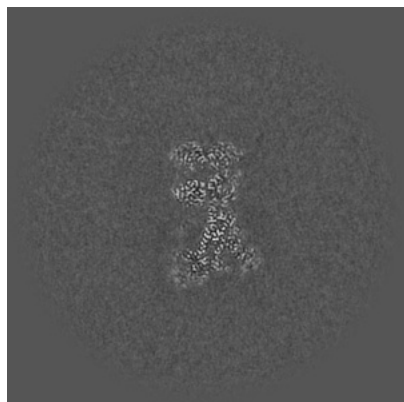


Z Index: 270

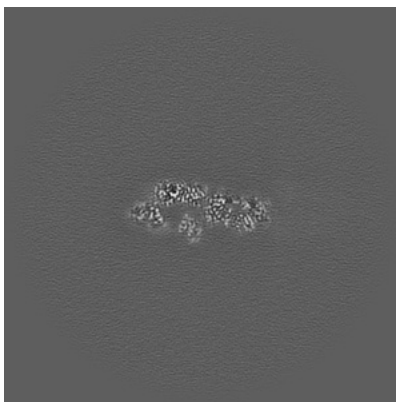
The images above show central slices of the map in three orthogonal directions.

## 6.3 Largest variance slices [i](#)

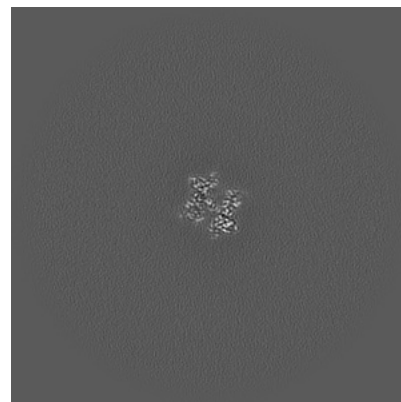
### 6.3.1 Primary map



X Index: 264

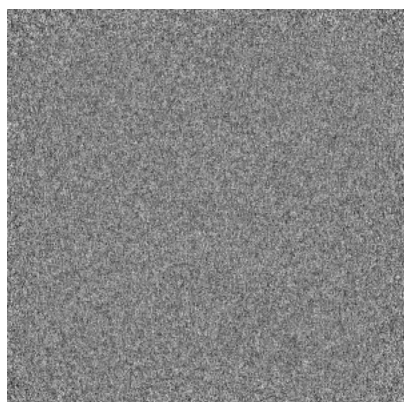


Y Index: 254

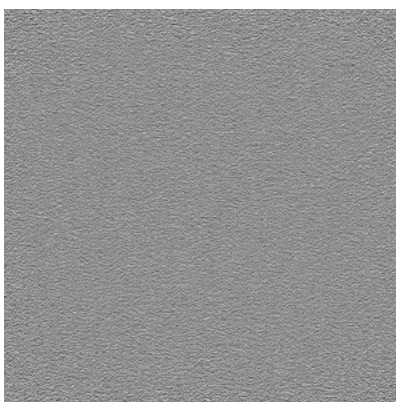


Z Index: 246

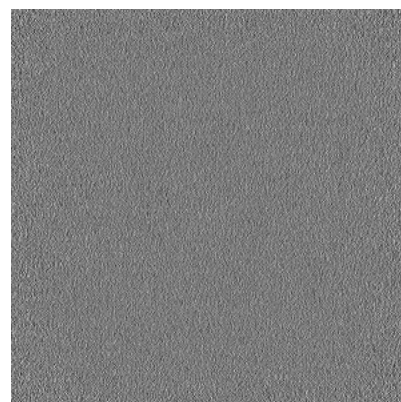
### 6.3.2 Raw map



X Index: 0



Y Index: 0

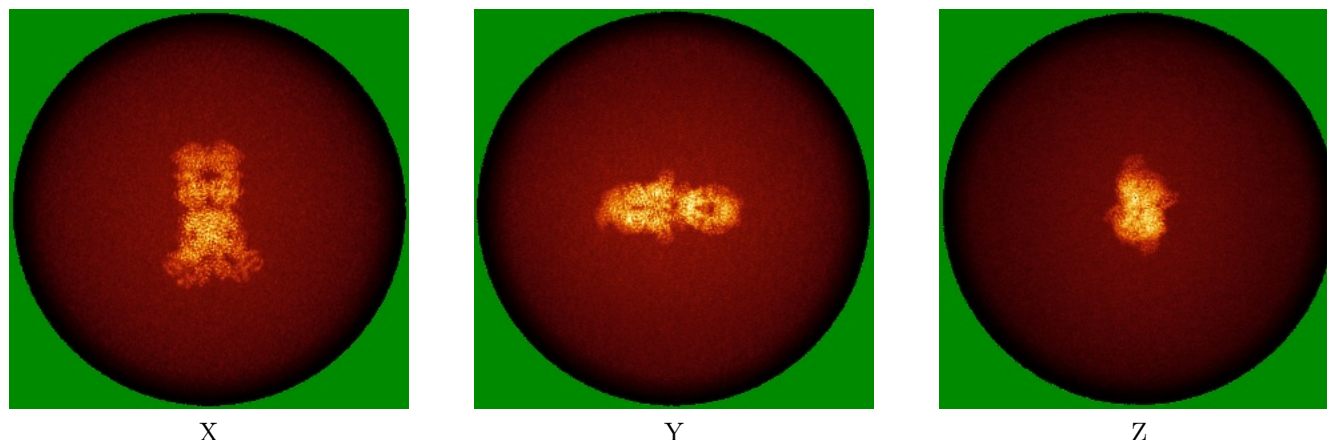


Z Index: 539

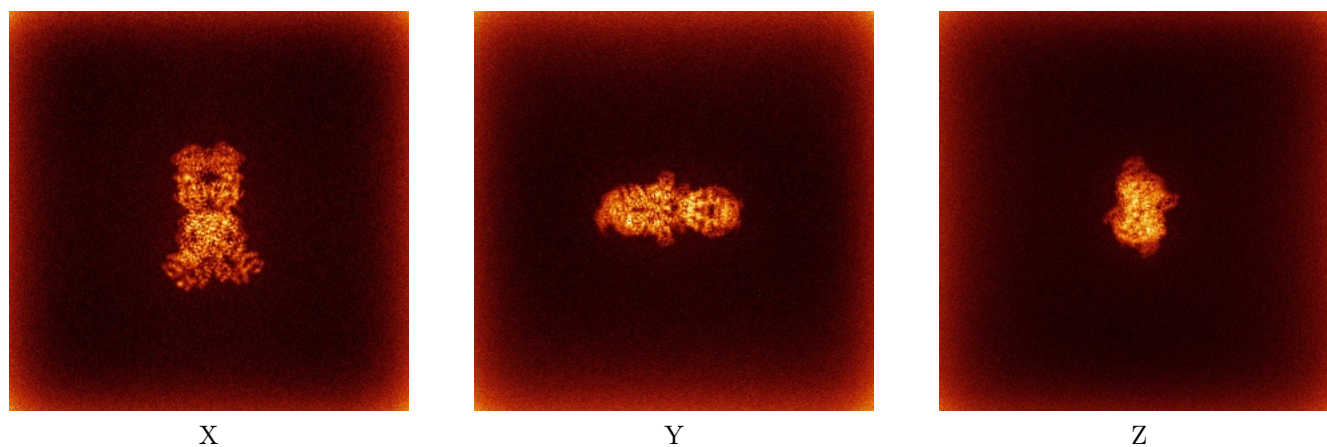
The images above show the largest variance slices of the map in three orthogonal directions.

## 6.4 Orthogonal standard-deviation projections (False-color) [i](#)

### 6.4.1 Primary map



### 6.4.2 Raw map

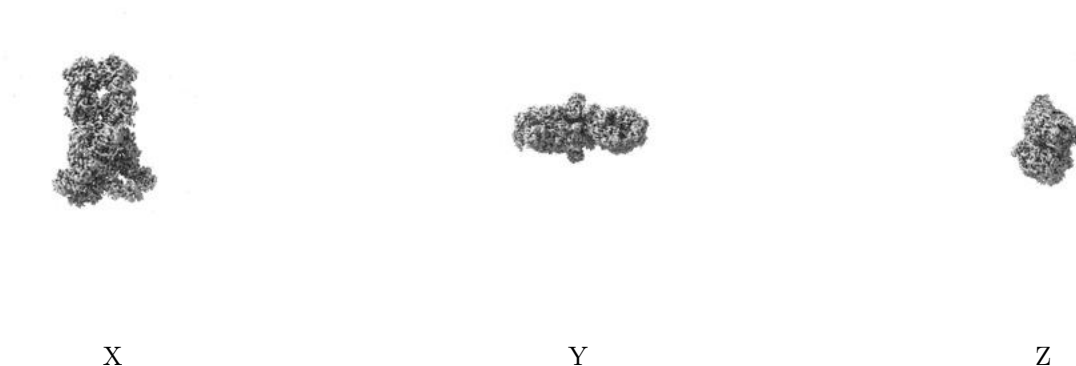


The images above show the map standard deviation projections with false color in three orthogonal directions. Minimum values are shown in green, max in blue, and dark to light orange shades represent small to large values respectively.



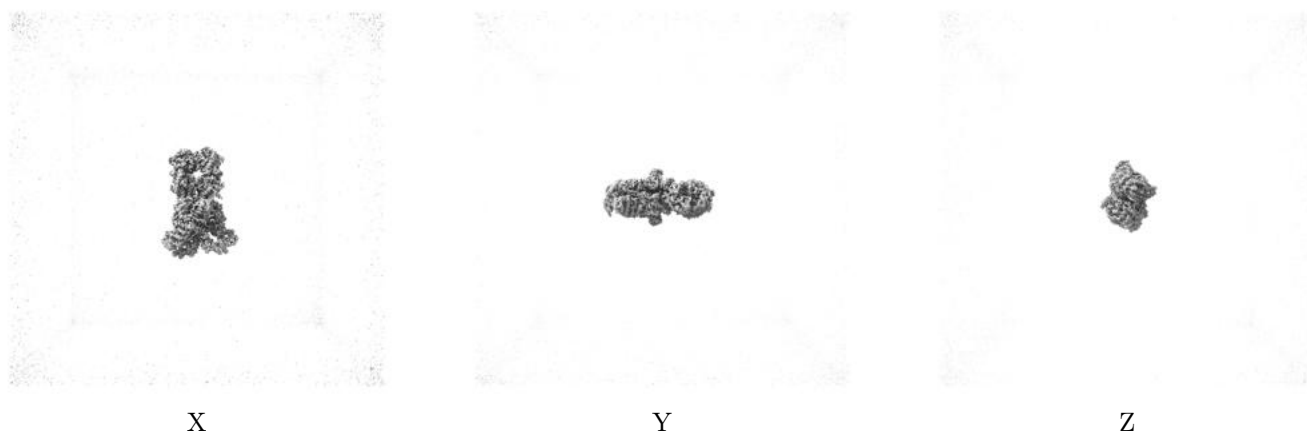
## 6.5 Orthogonal surface views [i](#)

### 6.5.1 Primary map



The images above show the 3D surface view of the map at the recommended contour level 0.5. These images, in conjunction with the slice images, may facilitate assessment of whether an appropriate contour level has been provided.

### 6.5.2 Raw map



These images show the 3D surface of the raw map. The raw map's contour level was selected so that its surface encloses the same volume as the primary map does at its recommended contour level.

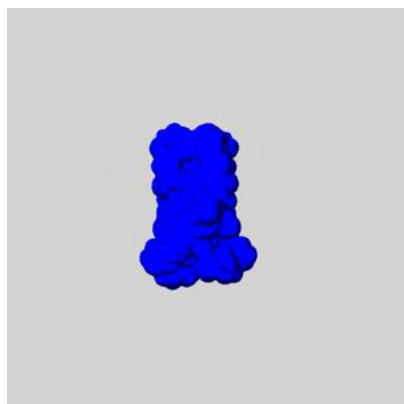
## 6.6 Mask visualisation [i](#)

This section shows the 3D surface view of the primary map at 50% transparency overlaid with the specified mask at 0% transparency

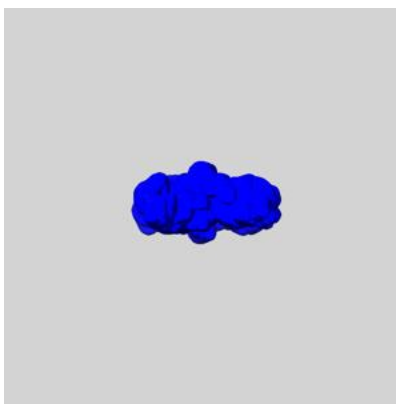
A mask typically either:

- Encompasses the whole structure
- Separates out a domain, a functional unit, a monomer or an area of interest from a larger structure

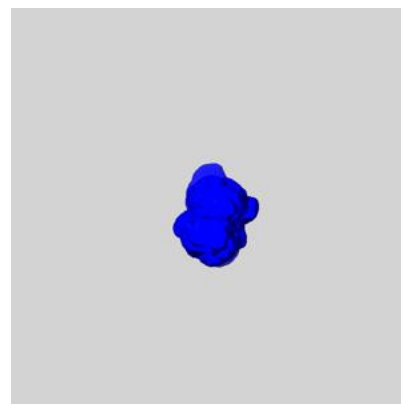
### 6.6.1 emd\_37926\_msk\_1.map [i](#)



X



Y

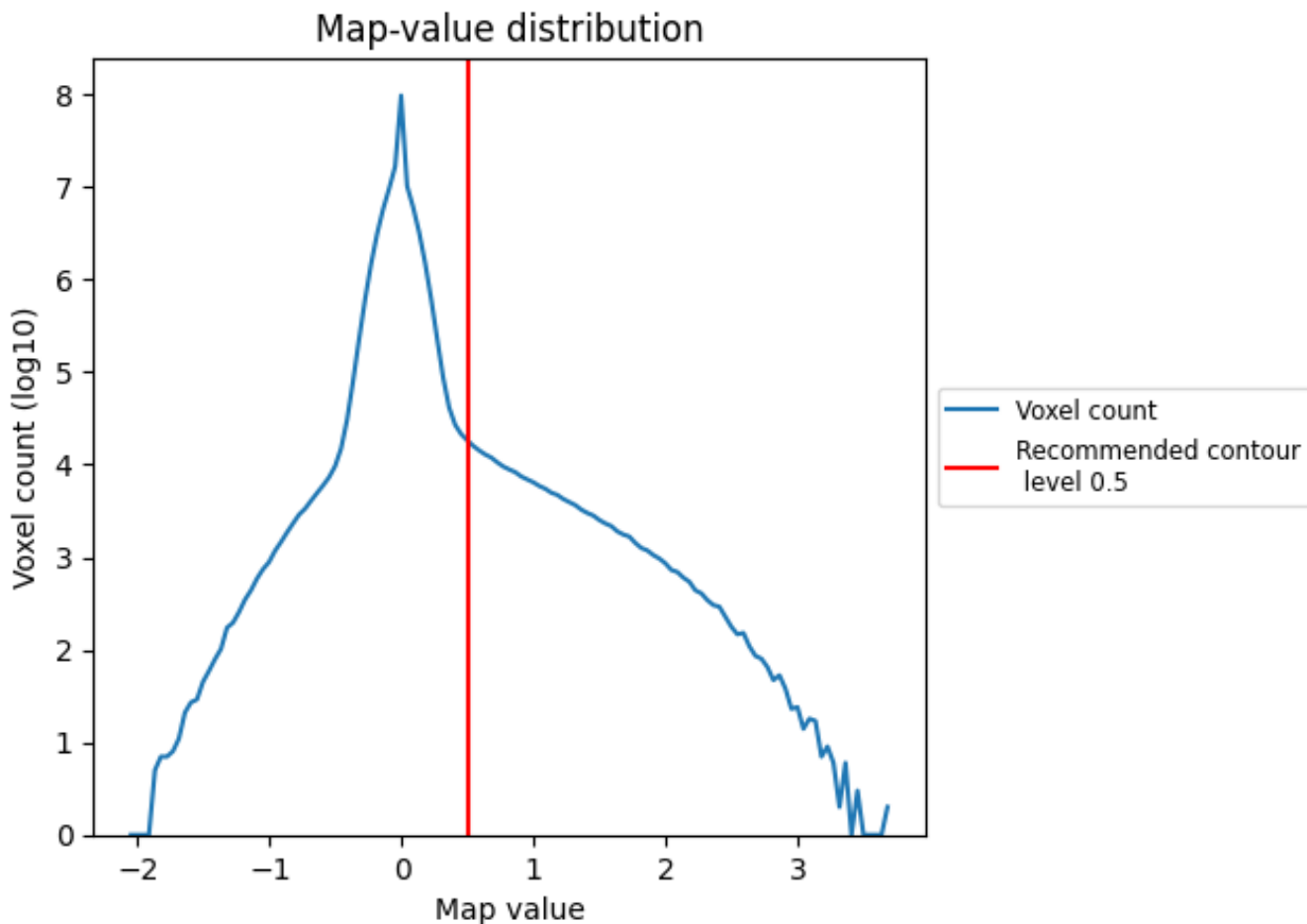


Z

## 7 Map analysis [i](#)

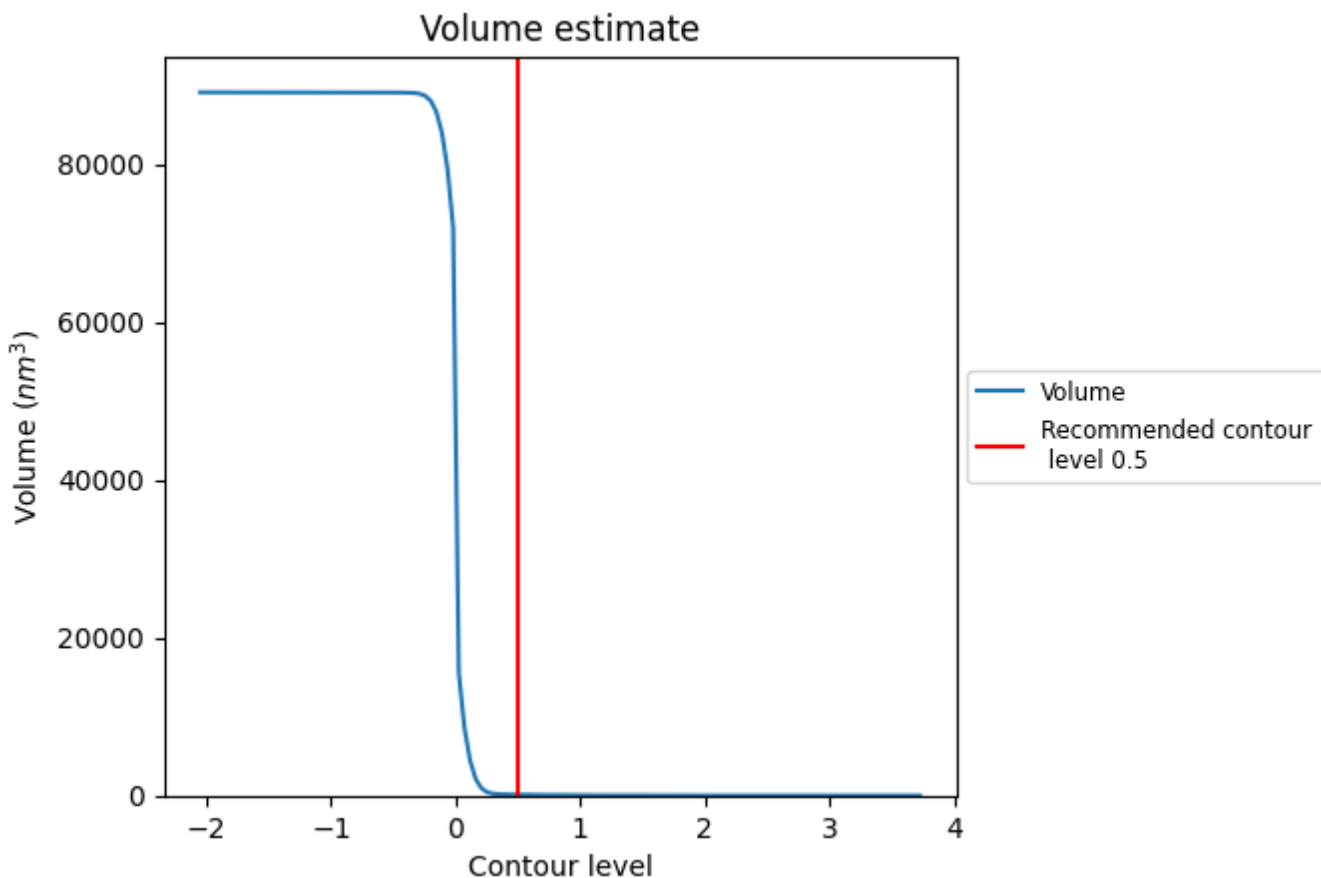
This section contains the results of statistical analysis of the map.

### 7.1 Map-value distribution [i](#)



The map-value distribution is plotted in 128 intervals along the x-axis. The y-axis is logarithmic. A spike in this graph at zero usually indicates that the volume has been masked.

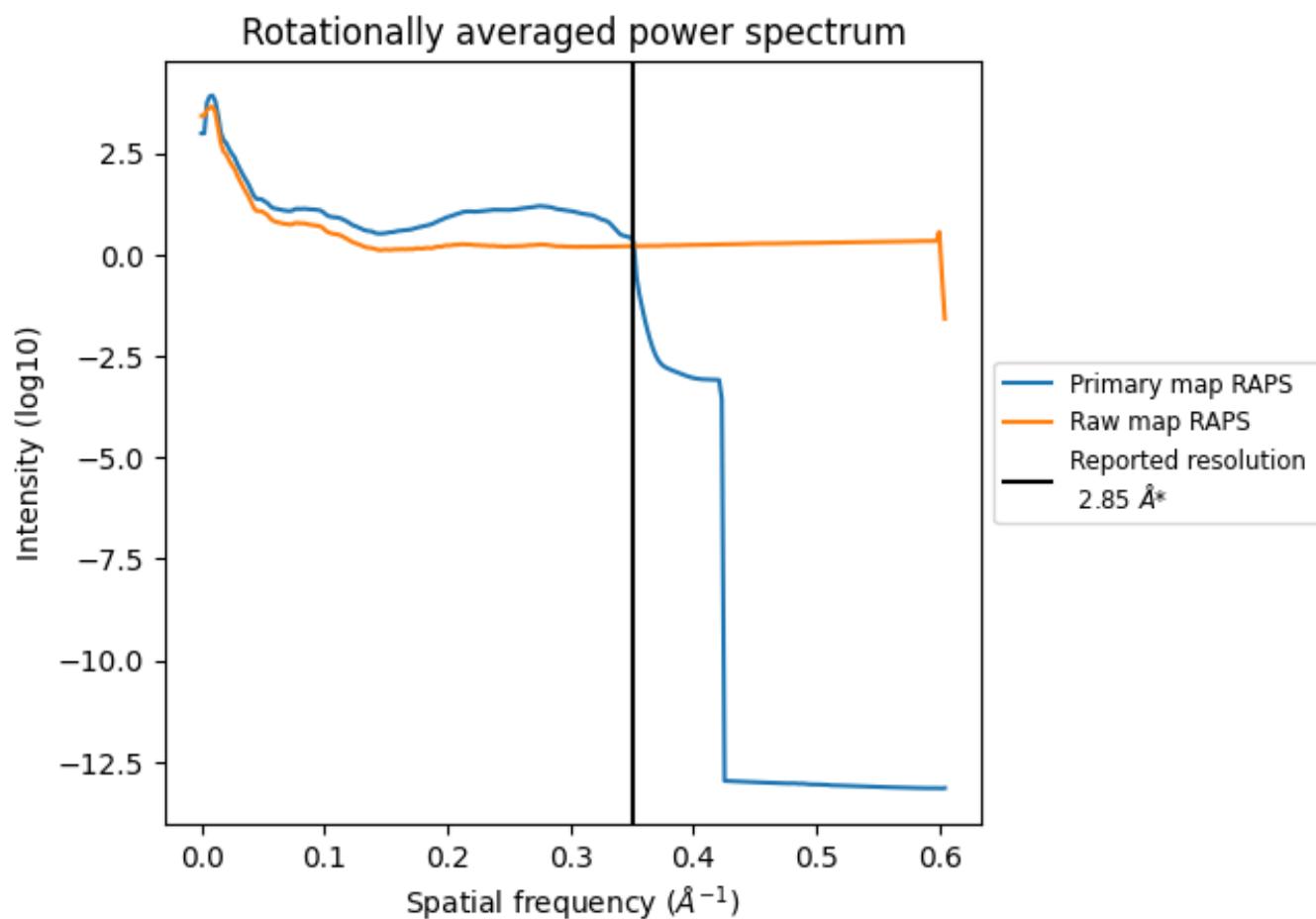
## 7.2 Volume estimate [i](#)



The volume at the recommended contour level is 111 nm<sup>3</sup>; this corresponds to an approximate mass of 101 kDa.

The volume estimate graph shows how the enclosed volume varies with the contour level. The recommended contour level is shown as a vertical line and the intersection between the line and the curve gives the volume of the enclosed surface at the given level.

### 7.3 Rotationally averaged power spectrum i

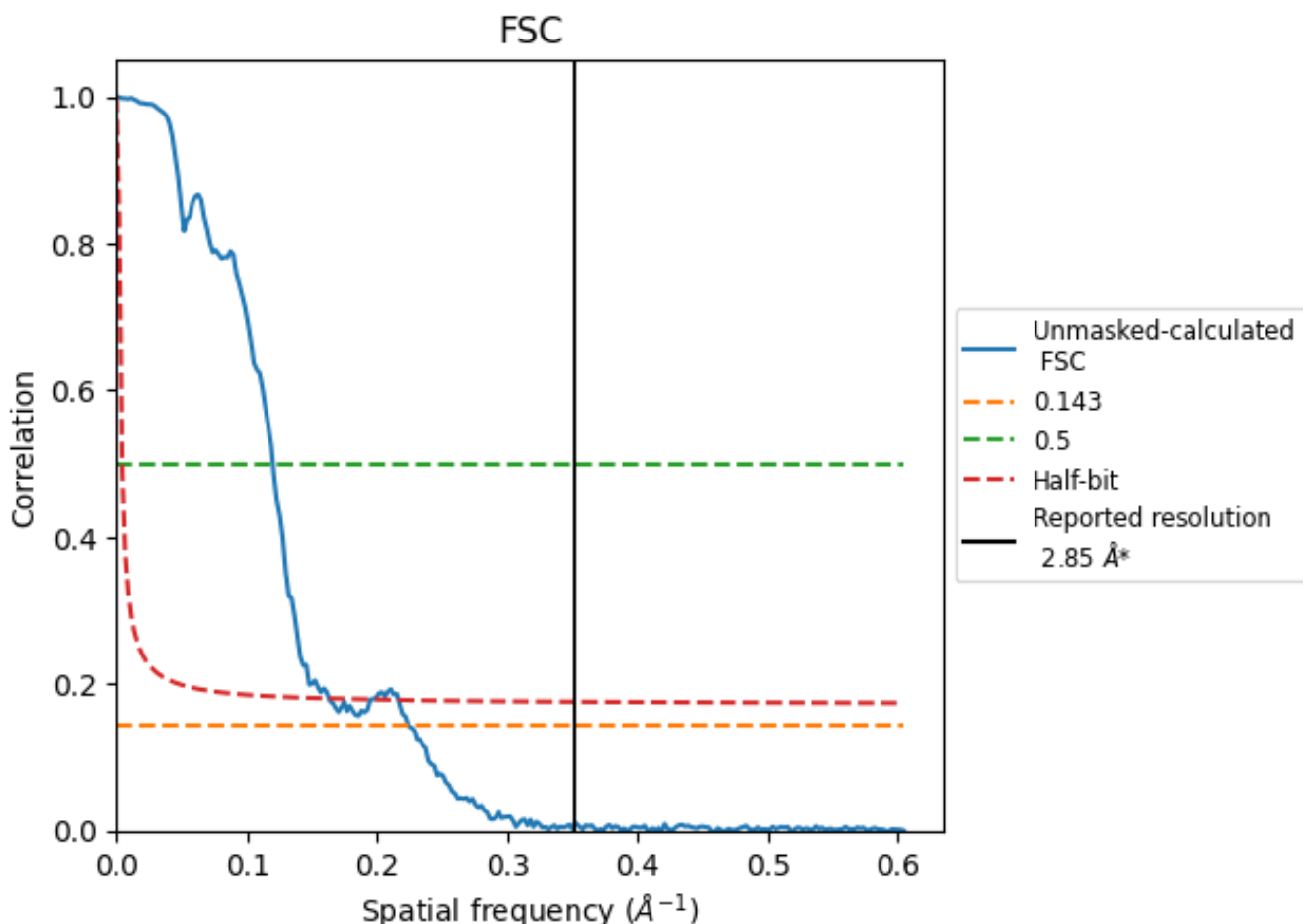


\*Reported resolution corresponds to spatial frequency of  $0.351 \text{ \AA}^{-1}$

## 8 Fourier-Shell correlation [i](#)

Fourier-Shell Correlation (FSC) is the most commonly used method to estimate the resolution of single-particle and subtomogram-averaged maps. The shape of the curve depends on the imposed symmetry, mask and whether or not the two 3D reconstructions used were processed from a common reference. The reported resolution is shown as a black line. A curve is displayed for the half-bit criterion in addition to lines showing the 0.143 gold standard cut-off and 0.5 cut-off.

### 8.1 FSC [i](#)



\*Reported resolution corresponds to spatial frequency of 0.351  $\text{\AA}^{-1}$

## 8.2 Resolution estimates [i](#)

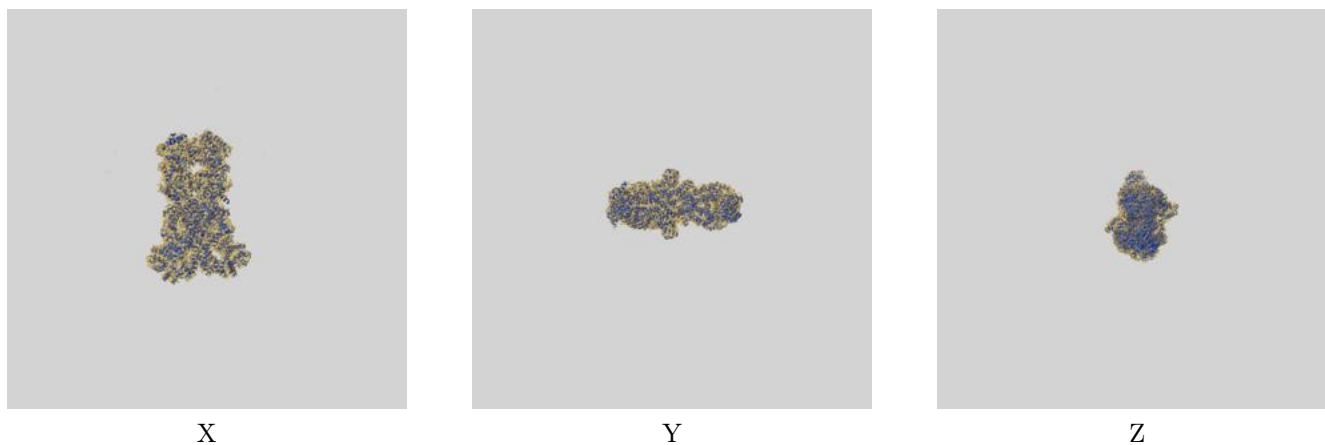
Resolution estimate (Å)	Estimation criterion (FSC cut-off)		
	0.143	0.5	Half-bit
Reported by author	2.85	-	-
Author-provided FSC curve	-	-	-
Unmasked-calculated*	4.47	8.33	6.14

\*Resolution estimate based on FSC curve calculated by comparison of deposited half-maps. The value from deposited half-maps intersecting FSC 0.143 CUT-OFF 4.47 differs from the reported value 2.85 by more than 10 %

## 9 Map-model fit [i](#)

This section contains information regarding the fit between EMDB map EMD-37926 and PDB model 8WYF. Per-residue inclusion information can be found in section [3](#) on page [6](#).

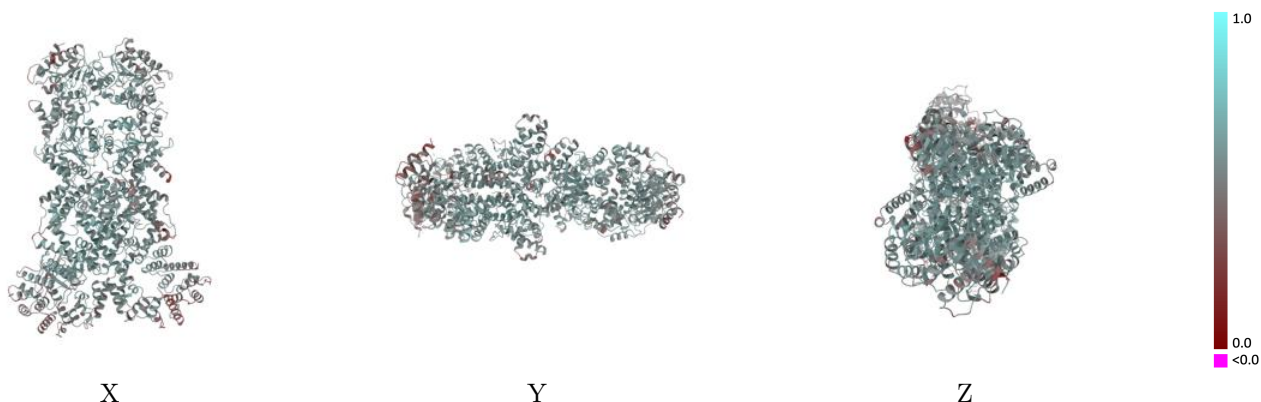
### 9.1 Map-model overlay [i](#)



The images above show the 3D surface view of the map at the recommended contour level 0.5 at 50% transparency in yellow overlaid with a ribbon representation of the model coloured in blue. These images allow for the visual assessment of the quality of fit between the atomic model and the map.

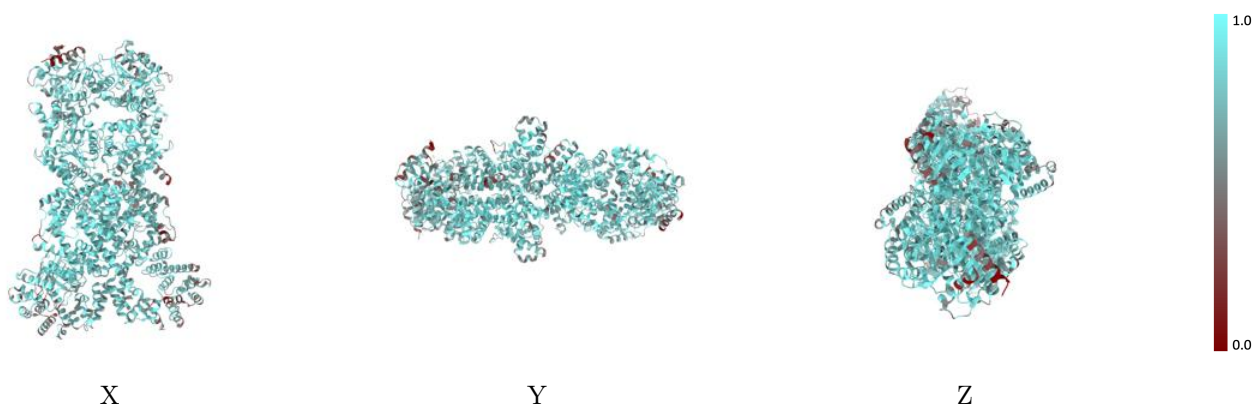


## 9.2 Q-score mapped to coordinate model [i](#)



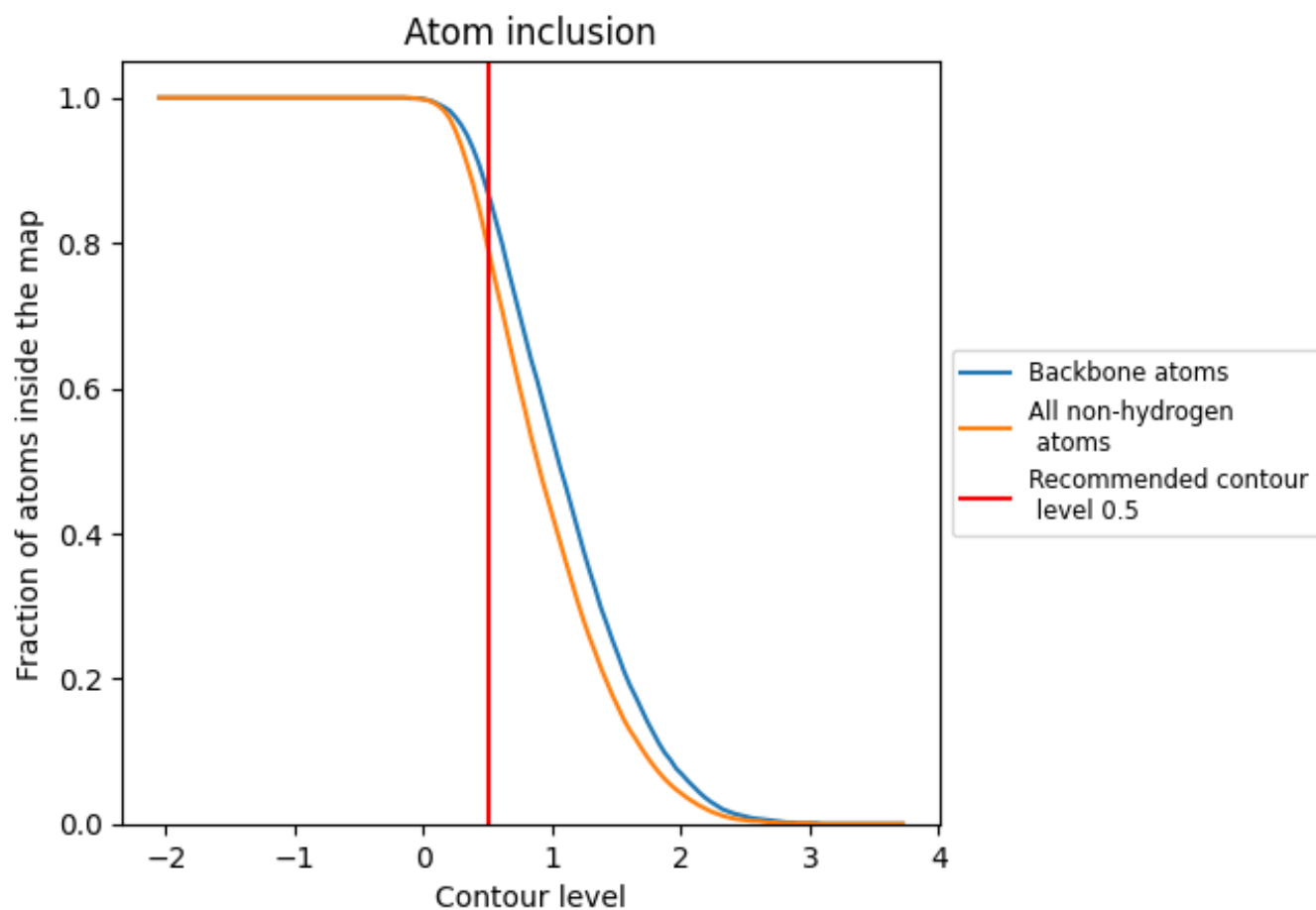
The images above show the model with each residue coloured according to its Q-score. This shows their resolvability in the map with higher Q-score values reflecting better resolvability. Please note: Q-score is calculating the resolvability of atoms, and thus high values are only expected at resolutions at which atoms can be resolved. Low Q-score values may therefore be expected for many entries.

## 9.3 Atom inclusion mapped to coordinate model [i](#)



The images above show the model with each residue coloured according to its atom inclusion. This shows to what extent they are inside the map at the recommended contour level (0.5).













## 9.4 Atom inclusion [i](#)



At the recommended contour level, 87% of all backbone atoms, 79% of all non-hydrogen atoms, are inside the map.

## 9.5 Map-model fit summary

The table lists the average atom inclusion at the recommended contour level (0.5) and Q-score for the entire model and for each chain.

Chain	Atom inclusion	Q-score
All	 0.7930	 0.5460
A	 0.8060	 0.5510
B	 0.8060	 0.5510
C	 0.7740	 0.5410
D	 0.7770	 0.5390
E	 0.6670	 0.4960

