



Full wwPDB X-ray Structure Validation Report ⓘ

Aug 20, 2020 – 02:01 PM BST

PDB ID : 3X1B
Title : Crystal structure of laccase from *Lentinus* sp. at 1.8 Å resolution
Authors : Jeng, W.Y.; Shyur, L.F.; Wang, A.H.J.
Deposited on : 2014-10-31
Resolution : 1.80 Å (reported)

This is a Full wwPDB X-ray Structure Validation Report for a publicly released PDB entry.

We welcome your comments at validation@mail.wwpdb.org

A user guide is available at

<https://www.wwpdb.org/validation/2017/XrayValidationReportHelp>

with specific help available everywhere you see the ⓘ symbol.

The following versions of software and data (see [references ⓘ](#)) were used in the production of this report:

MolProbity : 4.02b-467
Mogul : 1.8.5 (274361), CSD as541be (2020)
Xtriage (Phenix) : 1.13
EDS : 2.13.1
Percentile statistics : 20191225.v01 (using entries in the PDB archive December 25th 2019)
Refmac : 5.8.0158
CCP4 : 7.0.044 (Gargrove)
Ideal geometry (proteins) : Engh & Huber (2001)
Ideal geometry (DNA, RNA) : Parkinson et al. (1996)
Validation Pipeline (wwPDB-VP) : 2.13.1

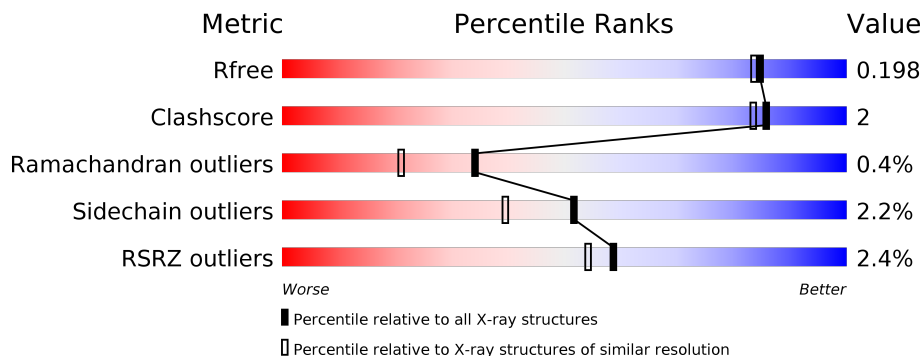
1 Overall quality at a glance

The following experimental techniques were used to determine the structure:

X-RAY DIFFRACTION

The reported resolution of this entry is 1.80 Å.

Percentile scores (ranging between 0-100) for global validation metrics of the entry are shown in the following graphic. The table shows the number of entries on which the scores are based.



Metric	Whole archive (#Entries)	Similar resolution (#Entries, resolution range(Å))
R_{free}	130704	5950 (1.80-1.80)
Clashscore	141614	6793 (1.80-1.80)
Ramachandran outliers	138981	6697 (1.80-1.80)
Sidechain outliers	138945	6696 (1.80-1.80)
RSRZ outliers	127900	5850 (1.80-1.80)

The table below summarises the geometric issues observed across the polymeric chains and their fit to the electron density. The red, orange, yellow and green segments on the lower bar indicate the fraction of residues that contain outliers for ≥ 3 , 2, 1 and 0 types of geometric quality criteria respectively. A grey segment represents the fraction of residues that are not modelled. The numeric value for each fraction is indicated below the corresponding segment, with a dot representing fractions $\leq 5\%$. The upper red bar (where present) indicates the fraction of residues that have poor fit to the electron density. The numeric value is given above the bar.

Mol	Chain	Length	Quality of chain
1	A	521	 2% 90% 6%
1	B	521	 3% 89% 7%
2	C	6	 67% 33%
2	D	6	 33% 33% 33%
3	E	6	 17% 83%
4	F	7	 29% 71%

The following table lists non-polymeric compounds, carbohydrate monomers and non-standard residues in protein, DNA, RNA chains that are outliers for geometric or electron-density-fit criteria:

Mol	Type	Chain	Res	Chirality	Geometry	Clashes	Electron density
5	NAG	A	613	-	-	-	X

2 Entry composition i

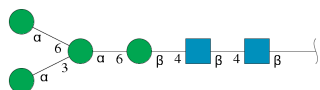
There are 7 unique types of molecules in this entry. The entry contains 9079 atoms, of which 0 are hydrogens and 0 are deuteriums.

In the tables below, the ZeroOcc column contains the number of atoms modelled with zero occupancy, the AltConf column contains the number of residues with at least one atom in alternate conformation and the Trace column contains the number of residues modelled with at most 2 atoms.

- Molecule 1 is a protein called laccase.

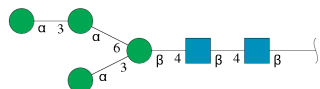
Mol	Chain	Residues	Atoms					ZeroOcc	AltConf	Trace
			Total	C	N	O	S			
1	A	500	Total	C	N	O	S	0	0	0
			3814	2435	648	724	7			
1	B	500	Total	C	N	O	S	0	0	0
			3814	2435	648	724	7			

- Molecule 2 is an oligosaccharide called alpha-D-mannopyranose-(1-3)-[alpha-D-mannopyranose-(1-6)]alpha-D-mannopyranose-(1-6)-beta-D-mannopyranose-(1-4)-2-acetamido-2-deoxy-beta-D-glucopyranose-(1-4)-2-acetamido-2-deoxy-beta-D-glucopyranose.



Mol	Chain	Residues	Atoms				ZeroOcc	AltConf	Trace
			Total	C	N	O			
2	C	6	Total	C	N	O	0	0	0
			72	40	2	30			
2	D	6	Total	C	N	O	0	0	0
			72	40	2	30			

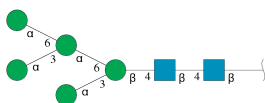
- Molecule 3 is an oligosaccharide called alpha-D-mannopyranose-(1-3)-alpha-D-mannopyranose-(1-6)-[alpha-D-mannopyranose-(1-3)]beta-D-mannopyranose-(1-4)-2-acetamido-2-deoxy-beta-D-glucopyranose-(1-4)-2-acetamido-2-deoxy-beta-D-glucopyranose.



Mol	Chain	Residues	Atoms				ZeroOcc	AltConf	Trace
			Total	C	N	O			
3	E	6	Total	C	N	O	0	0	0
			72	40	2	30			

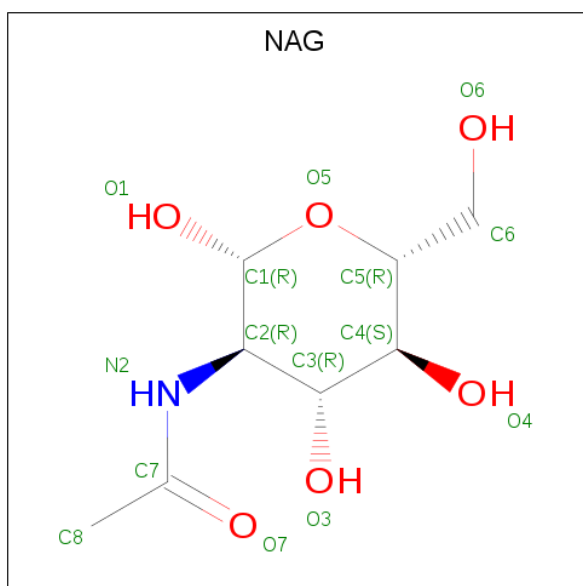
- Molecule 4 is an oligosaccharide called alpha-D-mannopyranose-(1-3)-[alpha-D-mannopyran

ose-(1-6)]alpha-D-mannopyranose-(1-6)-[alpha-D-mannopyranose-(1-3)]beta-D-mannopyranose-(1-4)-2-acetamido-2-deoxy-beta-D-glucopyranose-(1-4)-2-acetamido-2-deoxy-beta-D-glucopyranose.



Mol	Chain	Residues	Atoms				ZeroOcc	AltConf	Trace
			Total	C	N	O			
4	F	7	83	46	2	35	0	0	0

- Molecule 5 is 2-acetamido-2-deoxy-beta-D-glucopyranose (three-letter code: NAG) (formula: $C_8H_{15}NO_6$).



Mol	Chain	Residues	Atoms				ZeroOcc	AltConf
			Total	C	N	O		
5	A	1	14	8	1	5	0	0
5	B	1	14	8	1	5	0	0

- Molecule 6 is COPPER (II) ION (three-letter code: CU) (formula: Cu).

Mol	Chain	Residues	Atoms		ZeroOcc	AltConf
			Total	Cu		
6	B	4	4	4	0	0
6	A	4	4	4	0	0

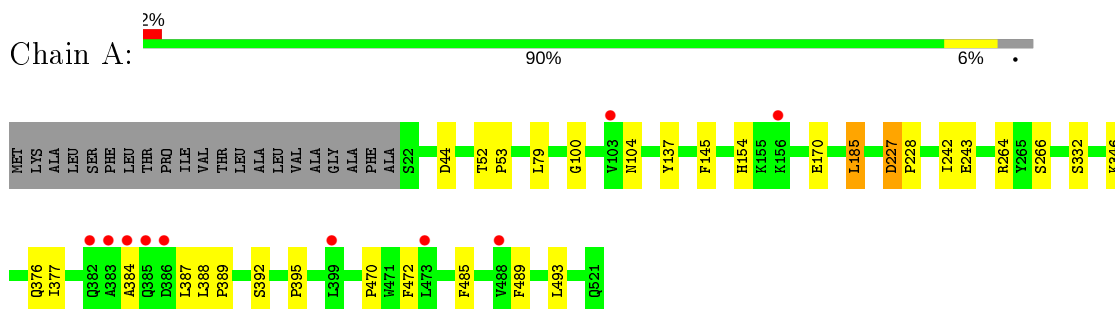
- Molecule 7 is water.

Mol	Chain	Residues	Atoms		ZeroOcc	AltConf
7	A	619	Total 619	O 619	0	0
7	B	497	Total 497	O 497	0	0

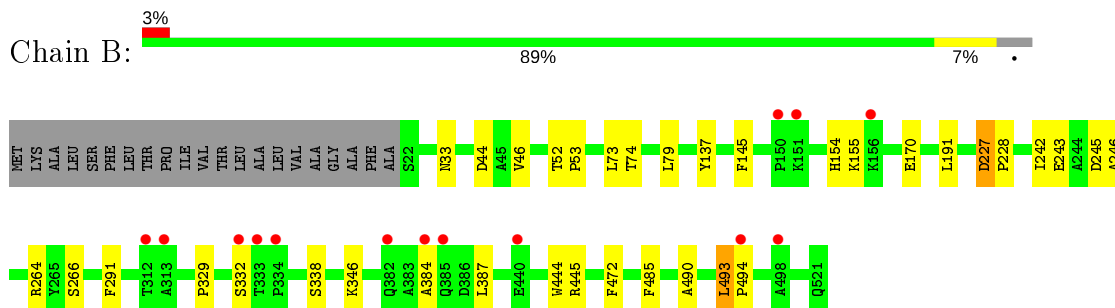
3 Residue-property plots [i](#)

These plots are drawn for all protein, RNA, DNA and oligosaccharide chains in the entry. The first graphic for a chain summarises the proportions of the various outlier classes displayed in the second graphic. The second graphic shows the sequence view annotated by issues in geometry and electron density. Residues are color-coded according to the number of geometric quality criteria for which they contain at least one outlier: green = 0, yellow = 1, orange = 2 and red = 3 or more. A red dot above a residue indicates a poor fit to the electron density ($RSRZ > 2$). Stretches of 2 or more consecutive residues without any outlier are shown as a green connector. Residues present in the sample, but not in the model, are shown in grey.

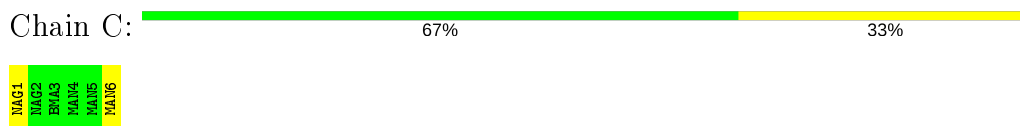
- Molecule 1: laccase



- Molecule 1: laccase



- Molecule 2: alpha-D-mannopyranose-(1-3)-[alpha-D-mannopyranose-(1-6)]alpha-D-mannopyranose-(1-6)-beta-D-mannopyranose-(1-4)-2-acetamido-2-deoxy-beta-D-glucopyranose-(1-4)-2-acetamido-2-deoxy-beta-D-glucopyranose



- Molecule 2: alpha-D-mannopyranose-(1-3)-[alpha-D-mannopyranose-(1-6)]alpha-D-mannopyranose-(1-6)-beta-D-mannopyranose-(1-4)-2-acetamido-2-deoxy-beta-D-glucopyranose-(1-4)-2-acetamido-2-deoxy-beta-D-glucopyranose



- Molecule 3: alpha-D-mannopyranose-(1-3)-alpha-D-mannopyranose-(1-6)-[alpha-D-mannopyranose-(1-3)]beta-D-mannopyranose-(1-4)-2-acetamido-2-deoxy-beta-D-glucopyranose-(1-4)-2-acetamido-2-deoxy-beta-D-glucopyranose

Chain E:  17% 83%

MAG1
MAG2
EMAG3
MAN4
MAN5
MAN6

- Molecule 4: alpha-D-mannopyranose-(1-3)-[alpha-D-mannopyranose-(1-6)]alpha-D-mannopyranose-(1-6)-[alpha-D-mannopyranose-(1-3)]beta-D-mannopyranose-(1-4)-2-acetamido-2-deoxy-beta-D-glucopyranose-(1-4)-2-acetamido-2-deoxy-beta-D-glucopyranose

Chain F:  29% 71%

MAG1
MAG2
EMAG3
MAN4
MAN5
MAN6
MAN7

4 Data and refinement statistics

Property	Value	Source
Space group	P 21 21 2	Depositor
Cell constants a, b, c, α , β , γ	99.27Å 188.68Å 65.41Å 90.00° 90.00° 90.00°	Depositor
Resolution (Å)	30.00 – 1.80 29.98 – 1.80	Depositor EDS
% Data completeness (in resolution range)	99.8 (30.00-1.80) 99.7 (29.98-1.80)	Depositor EDS
R_{merge}	0.09	Depositor
R_{sym}	(Not available)	Depositor
$\langle I/\sigma(I) \rangle$ ¹	3.16 (at 1.80Å)	Xtriage
Refinement program	REFMAC 5.5.0109	Depositor
R, R_{free}	0.145 , 0.197 0.146 , 0.198	Depositor DCC
R_{free} test set	5729 reflections (5.01%)	wwPDB-VP
Wilson B-factor (Å ²)	18.9	Xtriage
Anisotropy	1.025	Xtriage
Bulk solvent k_{sol} (e/Å ³), B_{sol} (Å ²)	0.35 , 45.4	EDS
L-test for twinning ²	$\langle L \rangle = 0.50$, $\langle L^2 \rangle = 0.33$	Xtriage
Estimated twinning fraction	No twinning to report.	Xtriage
F_o, F_c correlation	0.97	EDS
Total number of atoms	9079	wwPDB-VP
Average B, all atoms (Å ²)	29.0	wwPDB-VP

Xtriage's analysis on translational NCS is as follows: *The largest off-origin peak in the Patterson function is 3.60% of the height of the origin peak. No significant pseudotranslation is detected.*

¹Intensities estimated from amplitudes.

²Theoretical values of $\langle |L| \rangle$, $\langle L^2 \rangle$ for acentric reflections are 0.5, 0.333 respectively for untwinned datasets, and 0.375, 0.2 for perfectly twinned datasets.

5 Model quality [i](#)

5.1 Standard geometry [i](#)

Bond lengths and bond angles in the following residue types are not validated in this section: BMA, NAG, CU, MAN

The Z score for a bond length (or angle) is the number of standard deviations the observed value is removed from the expected value. A bond length (or angle) with $|Z| > 5$ is considered an outlier worth inspection. RMSZ is the root-mean-square of all Z scores of the bond lengths (or angles).

Mol	Chain	Bond lengths		Bond angles	
		RMSZ	# Z >5	RMSZ	# Z >5
1	A	0.40	0/3934	0.66	0/5401
1	B	0.37	0/3934	0.63	0/5401
All	All	0.38	0/7868	0.65	0/10802

There are no bond length outliers.

There are no bond angle outliers.

There are no chirality outliers.

There are no planarity outliers.

5.2 Too-close contacts [i](#)

In the following table, the Non-H and H(model) columns list the number of non-hydrogen atoms and hydrogen atoms in the chain respectively. The H(added) column lists the number of hydrogen atoms added and optimized by MolProbity. The Clashes column lists the number of clashes within the asymmetric unit, whereas Symm-Clashes lists symmetry related clashes.

Mol	Chain	Non-H	H(model)	H(added)	Clashes	Symm-Clashes
1	A	3814	0	3625	15	0
1	B	3814	0	3625	17	0
2	C	72	0	61	0	0
2	D	72	0	61	3	0
3	E	72	0	61	0	0
4	F	83	0	70	0	0
5	A	14	0	13	0	0
5	B	14	0	13	0	0
6	A	4	0	0	0	0
6	B	4	0	0	0	0
7	A	619	0	0	2	0

Continued on next page...

Continued from previous page...

Mol	Chain	Non-H	H(model)	H(added)	Clashes	Symm-Clashes
7	B	497	0	0	1	0
All	All	9079	0	7529	34	0

The all-atom clashscore is defined as the number of clashes found per 1000 atoms (including hydrogen atoms). The all-atom clashscore for this structure is 2.

All (34) close contacts within the same asymmetric unit are listed below, sorted by their clash magnitude.

Atom-1	Atom-2	Interatomic distance (Å)	Clash overlap (Å)
1:A:376:GLN:HE22	1:A:388:LEU:H	1.14	0.89
2:D:4:MAN:H2	2:D:5:MAN:O2	1.76	0.85
1:A:170:GLU:OE1	7:A:1037:HOH:O	2.16	0.60
1:B:33:ASN:ND2	1:B:74:THR:H	2.00	0.60
1:B:170:GLU:HG2	1:B:191:LEU:HB2	1.83	0.60
1:B:44:ASP:OD2	7:B:1085:HOH:O	2.17	0.59
1:A:227:ASP:HB3	1:A:228:PRO:CD	2.35	0.56
1:A:389:PRO:HG2	1:A:392:SER:HB2	1.88	0.56
1:B:493:LEU:HB3	1:B:494:PRO:HD3	1.89	0.55
1:B:245:ASP:OD2	1:B:445:ARG:HB2	2.07	0.54
1:B:227:ASP:HB3	1:B:228:PRO:CD	2.38	0.54
1:A:44:ASP:OD2	7:A:1110:HOH:O	2.19	0.54
1:B:154:HIS:CD2	1:B:242:ILE:HB	2.43	0.54
1:B:227:ASP:HB3	1:B:228:PRO:HD3	1.94	0.50
1:B:243:GLU:HB3	1:B:266:SER:HB2	1.93	0.50
2:D:4:MAN:H2	2:D:5:MAN:C2	2.41	0.50
1:B:33:ASN:HD22	1:B:74:THR:H	1.58	0.49
1:A:243:GLU:HB3	1:A:266:SER:HB2	1.95	0.48
1:A:100:GLY:H	1:A:104:ASN:HD22	1.61	0.48
1:A:377:ILE:HG12	1:A:493:LEU:HD11	1.95	0.48
1:A:52:THR:HA	1:A:53:PRO:C	2.34	0.48
1:A:154:HIS:CD2	1:A:242:ILE:HB	2.49	0.48
1:A:227:ASP:HB3	1:A:228:PRO:HD3	1.96	0.47
1:B:490:ALA:HB1	1:B:493:LEU:HD23	1.97	0.46
1:A:185:LEU:HD22	1:B:291:PHE:H	1.82	0.45
2:D:4:MAN:H2	2:D:5:MAN:HO2	1.77	0.44
1:B:384:ALA:HA	1:B:387:LEU:HD12	2.01	0.43
1:B:46:VAL:HG13	1:B:73:LEU:HD21	2.01	0.43
1:B:52:THR:HA	1:B:53:PRO:C	2.39	0.43
1:A:384:ALA:HB3	1:A:395:PRO:HD3	2.01	0.42
1:B:329:PRO:HG3	1:B:444:TRP:HD1	1.85	0.41
1:A:384:ALA:HA	1:A:387:LEU:HD12	2.03	0.41

Continued on next page...

Continued from previous page...

Atom-1	Atom-2	Interatomic distance (Å)	Clash overlap (Å)
1:A:470:PRO:HA	1:A:489:PHE:O	2.20	0.41
1:B:243:GLU:OE2	1:B:246:ALA:HA	2.22	0.40

There are no symmetry-related clashes.

5.3 Torsion angles [i](#)

5.3.1 Protein backbone [i](#)

In the following table, the Percentiles column shows the percent Ramachandran outliers of the chain as a percentile score with respect to all X-ray entries followed by that with respect to entries of similar resolution.

The Analysed column shows the number of residues for which the backbone conformation was analysed, and the total number of residues.

Mol	Chain	Analysed	Favoured	Allowed	Outliers	Percentiles	
1	A	498/521 (96%)	488 (98%)	8 (2%)	2 (0%)	34	21
1	B	498/521 (96%)	485 (97%)	11 (2%)	2 (0%)	34	21
All	All	996/1042 (96%)	973 (98%)	19 (2%)	4 (0%)	34	21

All (4) Ramachandran outliers are listed below:

Mol	Chain	Res	Type
1	A	227	ASP
1	B	227	ASP
1	B	79	LEU
1	A	79	LEU

5.3.2 Protein sidechains [i](#)

In the following table, the Percentiles column shows the percent sidechain outliers of the chain as a percentile score with respect to all X-ray entries followed by that with respect to entries of similar resolution.

The Analysed column shows the number of residues for which the sidechain conformation was analysed, and the total number of residues.

Continued on next page...

Continued from previous page...

Mol	Chain	Analysed	Rotameric	Outliers	Percentiles	
1	A	411/426 (96%)	403 (98%)	8 (2%)	57	46
1	B	411/426 (96%)	401 (98%)	10 (2%)	49	36
All	All	822/852 (96%)	804 (98%)	18 (2%)	52	39

All (18) residues with a non-rotameric sidechain are listed below:

Mol	Chain	Res	Type
1	A	137	TYR
1	A	145	PHE
1	A	185	LEU
1	A	264	ARG
1	A	332	SER
1	A	346	LYS
1	A	472	PHE
1	A	485	PHE
1	B	137	TYR
1	B	145	PHE
1	B	155	LYS
1	B	264	ARG
1	B	332	SER
1	B	338	SER
1	B	346	LYS
1	B	472	PHE
1	B	485	PHE
1	B	493	LEU

Some sidechains can be flipped to improve hydrogen bonding and reduce clashes. All (10) such sidechains are listed below:

Mol	Chain	Res	Type
1	A	60	ASN
1	A	64	ASN
1	A	104	ASN
1	A	288	ASN
1	A	376	GLN
1	B	33	ASN
1	B	60	ASN
1	B	293	ASN
1	B	411	ASN

Continued on next page...

Continued from previous page...

Mol	Chain	Res	Type
1	B	521	GLN

5.3.3 RNA [i](#)

There are no RNA molecules in this entry.

5.4 Non-standard residues in protein, DNA, RNA chains [i](#)

There are no non-standard protein/DNA/RNA residues in this entry.

5.5 Carbohydrates [i](#)

25 monosaccharides are modelled in this entry.

In the following table, the Counts columns list the number of bonds (or angles) for which Mogul statistics could be retrieved, the number of bonds (or angles) that are observed in the model and the number of bonds (or angles) that are defined in the Chemical Component Dictionary. The Link column lists molecule types, if any, to which the group is linked. The Z score for a bond length (or angle) is the number of standard deviations the observed value is removed from the expected value. A bond length (or angle) with $|Z| > 2$ is considered an outlier worth inspection. RMSZ is the root-mean-square of all Z scores of the bond lengths (or angles).

Mol	Type	Chain	Res	Link	Bond lengths			Bond angles		
					Counts	RMSZ	$\# Z > 2$	Counts	RMSZ	$\# Z > 2$
2	NAG	C	1	1,2	14,14,15	0.52	0	17,19,21	1.43	3 (17%)
2	NAG	C	2	2	14,14,15	0.63	0	17,19,21	0.95	0
2	BMA	C	3	2	11,11,12	0.32	0	15,15,17	0.83	0
2	MAN	C	4	2	11,11,12	0.58	0	15,15,17	0.89	0
2	MAN	C	5	2	11,11,12	0.51	0	15,15,17	0.93	0
2	MAN	C	6	2	11,11,12	0.53	0	15,15,17	1.08	1 (6%)
2	NAG	D	1	1,2	14,14,15	0.46	0	17,19,21	1.02	0
2	NAG	D	2	2	14,14,15	0.56	0	17,19,21	0.85	0
2	BMA	D	3	2	11,11,12	0.38	0	15,15,17	1.28	2 (13%)
2	MAN	D	4	2	11,11,12	0.65	0	15,15,17	1.35	2 (13%)
2	MAN	D	5	2	11,11,12	0.54	0	15,15,17	1.09	1 (6%)
2	MAN	D	6	2	11,11,12	0.57	0	15,15,17	1.07	1 (6%)
3	NAG	E	1	1,3	14,14,15	0.55	0	17,19,21	1.16	2 (11%)
3	NAG	E	2	3	14,14,15	0.51	0	17,19,21	1.14	1 (5%)
3	BMA	E	3	3	11,11,12	0.31	0	15,15,17	0.98	0
3	MAN	E	4	3	11,11,12	0.67	0	15,15,17	1.34	2 (13%)

Mol	Type	Chain	Res	Link	Bond lengths			Bond angles		
					Counts	RMSZ	# Z > 2	Counts	RMSZ	# Z > 2
3	MAN	E	5	3	11,11,12	0.58	0	15,15,17	1.06	1 (6%)
3	MAN	E	6	3	11,11,12	0.65	0	15,15,17	1.46	2 (13%)
4	NAG	F	1	1,4	14,14,15	0.47	0	17,19,21	1.12	2 (11%)
4	NAG	F	2	4	14,14,15	0.61	0	17,19,21	0.82	0
4	BMA	F	3	4	11,11,12	0.34	0	15,15,17	0.97	1 (6%)
4	MAN	F	4	4	11,11,12	0.62	0	15,15,17	1.94	5 (33%)
4	MAN	F	5	4	11,11,12	0.62	0	15,15,17	2.32	5 (33%)
4	MAN	F	6	4	11,11,12	0.75	0	15,15,17	1.94	2 (13%)
4	MAN	F	7	4	11,11,12	0.61	0	15,15,17	0.92	0

In the following table, the Chirals column lists the number of chiral outliers, the number of chiral centers analysed, the number of these observed in the model and the number defined in the Chemical Component Dictionary. Similar counts are reported in the Torsion and Rings columns. '-' means no outliers of that kind were identified.

Mol	Type	Chain	Res	Link	Chirals	Torsions	Rings
2	NAG	C	1	1,2	-	0/6/23/26	0/1/1/1
2	NAG	C	2	2	-	0/6/23/26	0/1/1/1
2	BMA	C	3	2	-	0/2/19/22	0/1/1/1
2	MAN	C	4	2	-	0/2/19/22	0/1/1/1
2	MAN	C	5	2	-	0/2/19/22	0/1/1/1
2	MAN	C	6	2	-	0/2/19/22	0/1/1/1
2	NAG	D	1	1,2	-	0/6/23/26	0/1/1/1
2	NAG	D	2	2	-	0/6/23/26	0/1/1/1
2	BMA	D	3	2	-	0/2/19/22	0/1/1/1
2	MAN	D	4	2	-	0/2/19/22	0/1/1/1
2	MAN	D	5	2	-	0/2/19/22	1/1/1/1
2	MAN	D	6	2	-	0/2/19/22	0/1/1/1
3	NAG	E	1	1,3	-	0/6/23/26	0/1/1/1
3	NAG	E	2	3	-	0/6/23/26	0/1/1/1
3	BMA	E	3	3	-	0/2/19/22	0/1/1/1
3	MAN	E	4	3	-	0/2/19/22	0/1/1/1
3	MAN	E	5	3	-	0/2/19/22	0/1/1/1
3	MAN	E	6	3	-	1/2/19/22	0/1/1/1
4	NAG	F	1	1,4	-	0/6/23/26	0/1/1/1
4	NAG	F	2	4	-	0/6/23/26	0/1/1/1
4	BMA	F	3	4	-	2/2/19/22	0/1/1/1
4	MAN	F	4	4	-	2/2/19/22	0/1/1/1
4	MAN	F	5	4	-	2/2/19/22	1/1/1/1
4	MAN	F	6	4	-	0/2/19/22	0/1/1/1

Continued on next page...

Continued from previous page...

Mol	Type	Chain	Res	Link	Chirals	Torsions	Rings
4	MAN	F	7	4	-	1/2/19/22	0/1/1/1

There are no bond length outliers.

All (33) bond angle outliers are listed below:

Mol	Chain	Res	Type	Atoms	Z	Observed(°)	Ideal(°)
4	F	5	MAN	C1-C2-C3	-6.05	102.23	109.67
4	F	6	MAN	C1-C2-C3	5.43	116.34	109.67
4	F	4	MAN	C3-C4-C5	4.17	117.68	110.24
4	F	6	MAN	C2-C3-C4	4.12	118.03	110.89
4	F	4	MAN	C1-O5-C5	3.89	117.46	112.19
3	E	6	MAN	C1-C2-C3	3.67	114.17	109.67
4	F	5	MAN	C1-O5-C5	-3.67	107.22	112.19
4	F	5	MAN	O2-C2-C1	3.67	116.65	109.15
2	D	4	MAN	C1-O5-C5	3.39	116.78	112.19
2	D	6	MAN	C1-O5-C5	3.34	116.72	112.19
2	C	1	NAG	O5-C5-C6	3.33	112.42	107.20
3	E	4	MAN	C1-C2-C3	3.21	113.62	109.67
2	C	6	MAN	O5-C5-C6	2.96	111.84	107.20
4	F	1	NAG	C1-O5-C5	2.95	116.19	112.19
3	E	5	MAN	C1-O5-C5	2.95	116.18	112.19
3	E	4	MAN	O5-C5-C6	2.91	111.77	107.20
4	F	4	MAN	O3-C3-C4	-2.77	103.95	110.35
2	C	1	NAG	O4-C4-C5	-2.67	102.66	109.30
2	D	5	MAN	O5-C5-C6	2.64	111.34	107.20
4	F	3	BMA	O5-C5-C6	2.64	111.34	107.20
2	D	3	BMA	O4-C4-C5	-2.63	102.78	109.30
3	E	6	MAN	O5-C5-C6	2.59	111.26	107.20
3	E	1	NAG	C1-O5-C5	2.54	115.64	112.19
3	E	2	NAG	C1-O5-C5	-2.52	108.77	112.19
3	E	1	NAG	O4-C4-C5	-2.50	103.08	109.30
2	D	3	BMA	C3-C4-C5	2.37	114.47	110.24
4	F	1	NAG	C1-C2-N2	2.20	114.24	110.49
4	F	4	MAN	O5-C5-C4	2.19	116.16	110.83
4	F	4	MAN	O5-C5-C6	-2.18	103.79	107.20
2	D	4	MAN	O3-C3-C2	2.16	114.14	109.99
2	C	1	NAG	C1-C2-N2	-2.15	106.82	110.49
4	F	5	MAN	C2-C3-C4	-2.14	107.19	110.89
4	F	5	MAN	O5-C5-C6	2.11	110.51	107.20

There are no chirality outliers.

All (8) torsion outliers are listed below:

Mol	Chain	Res	Type	Atoms
4	F	5	MAN	O5-C5-C6-O6
4	F	4	MAN	O5-C5-C6-O6
4	F	5	MAN	C4-C5-C6-O6
4	F	4	MAN	C4-C5-C6-O6
4	F	3	BMA	O5-C5-C6-O6
4	F	3	BMA	C4-C5-C6-O6
4	F	7	MAN	O5-C5-C6-O6
3	E	6	MAN	O5-C5-C6-O6

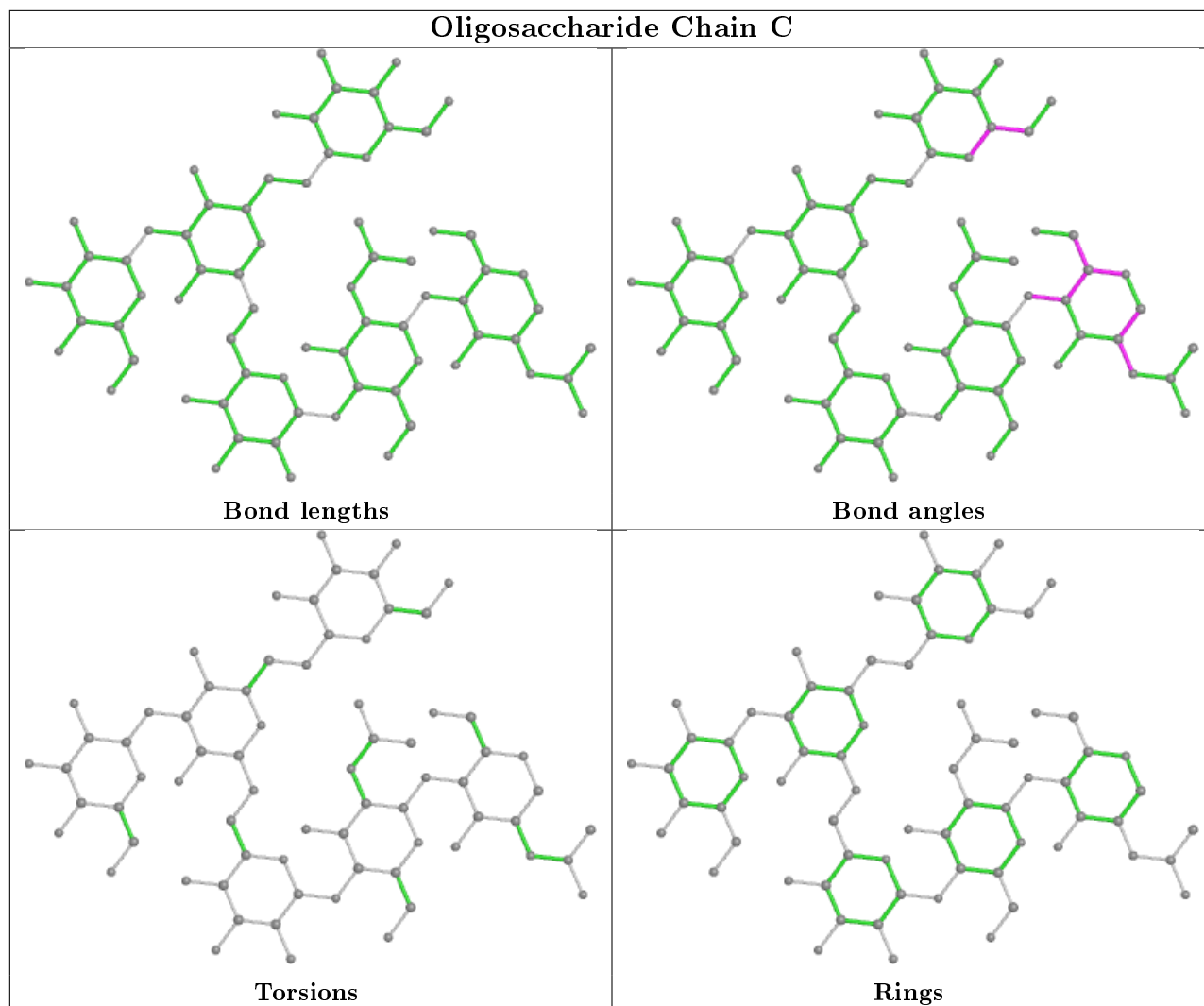
All (2) ring outliers are listed below:

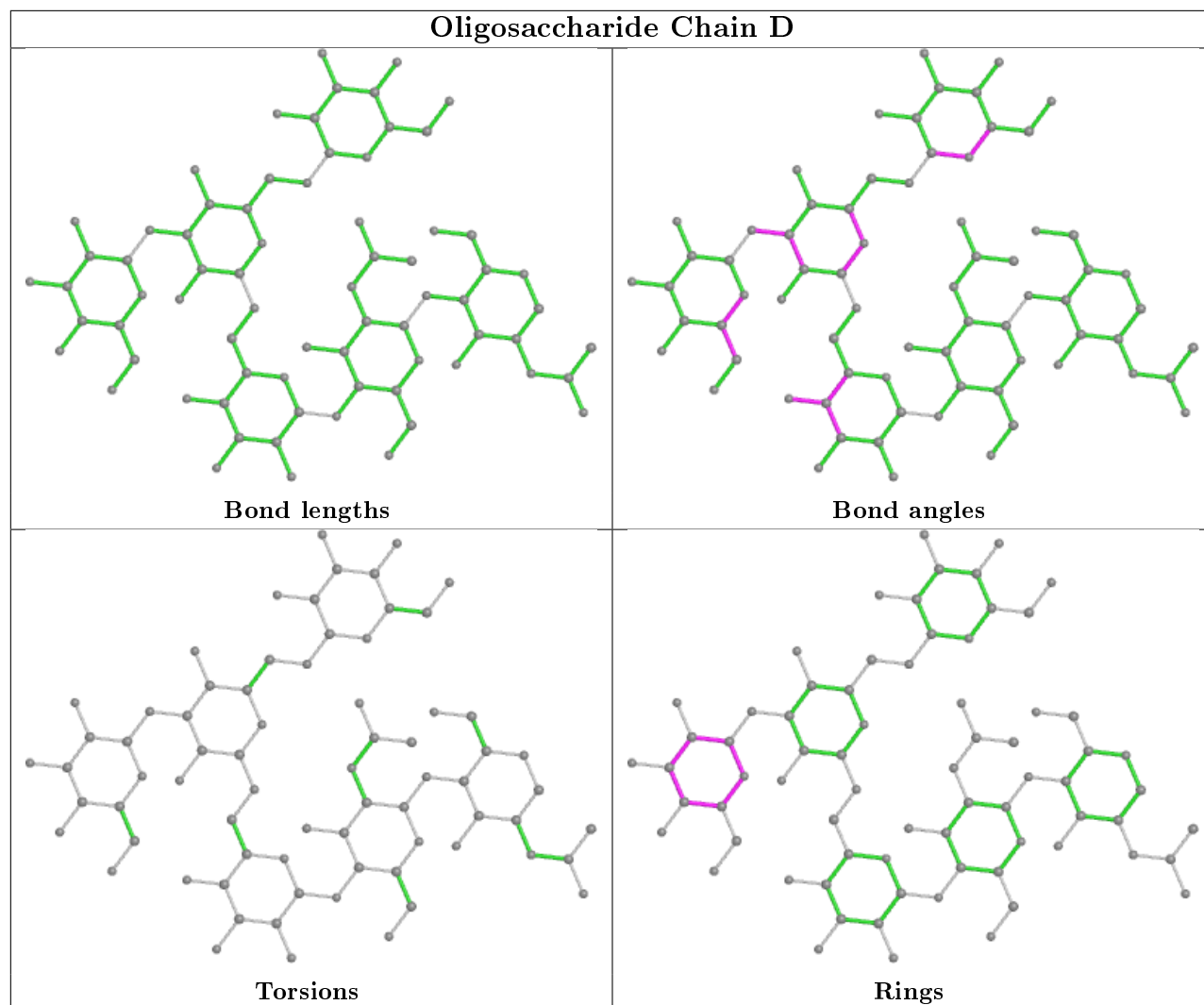
Mol	Chain	Res	Type	Atoms
2	D	5	MAN	C1-C2-C3-C4-C5-O5
4	F	5	MAN	C1-C2-C3-C4-C5-O5

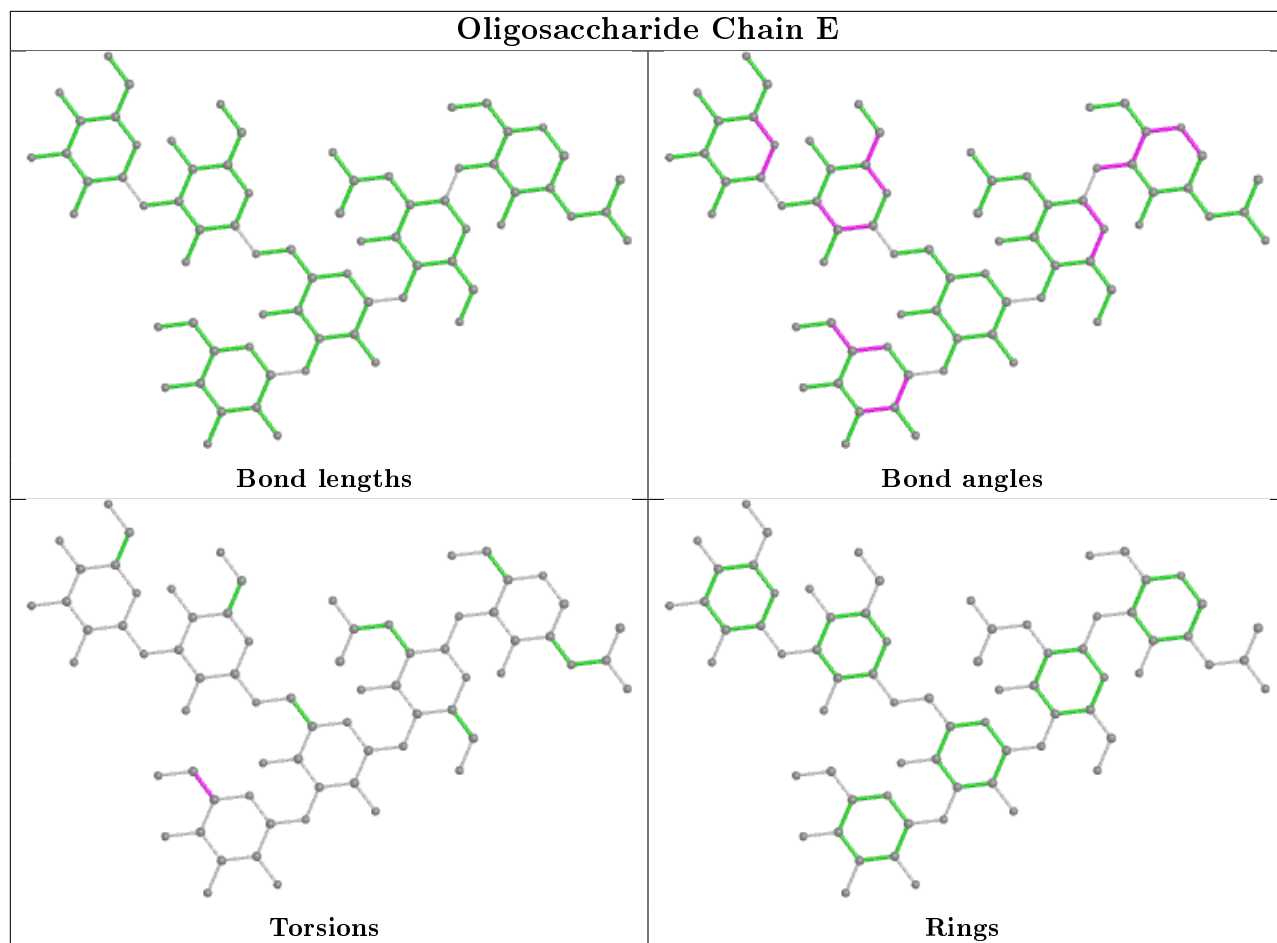
2 monomers are involved in 3 short contacts:

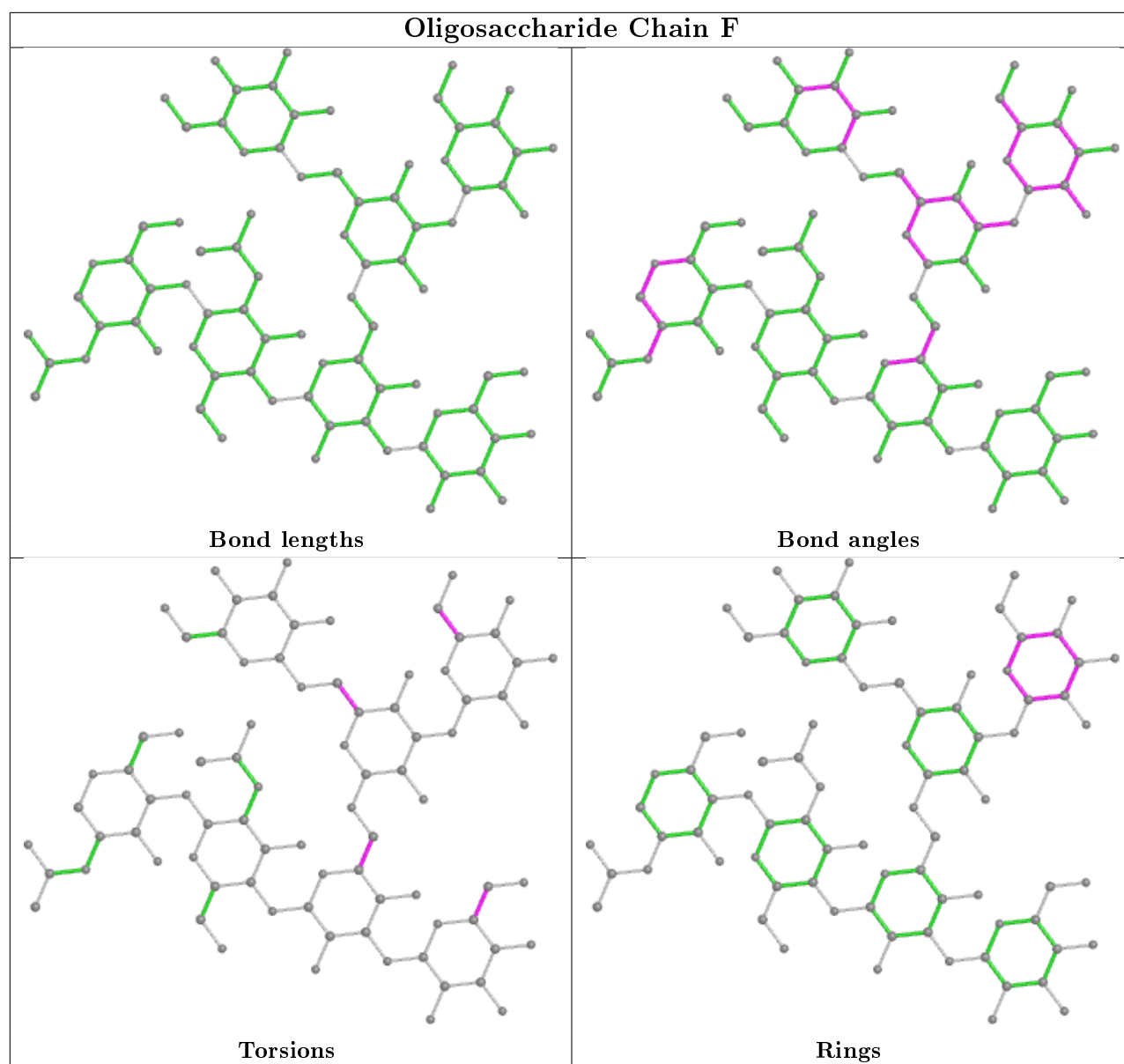
Mol	Chain	Res	Type	Clashes	Symm-Clashes
2	D	5	MAN	3	0
2	D	4	MAN	3	0

The following is a two-dimensional graphical depiction of Mogul quality analysis of bond lengths, bond angles, torsion angles, and ring geometry for oligosaccharide.









5.6 Ligand geometry [i](#)

Of 10 ligands modelled in this entry, 8 are monoatomic - leaving 2 for Mogul analysis.

In the following table, the Counts columns list the number of bonds (or angles) for which Mogul statistics could be retrieved, the number of bonds (or angles) that are observed in the model and the number of bonds (or angles) that are defined in the Chemical Component Dictionary. The Link column lists molecule types, if any, to which the group is linked. The Z score for a bond length (or angle) is the number of standard deviations the observed value is removed from the expected value. A bond length (or angle) with $|Z| > 2$ is considered an outlier worth inspection. RMSZ is the root-mean-square of all Z scores of the bond lengths (or angles).

Mol	Type	Chain	Res	Link	Bond lengths			Bond angles		
					Counts	RMSZ	# Z > 2	Counts	RMSZ	# Z > 2
5	NAG	A	613	1	14,14,15	0.47	0	17,19,21	1.00	1 (5%)
5	NAG	B	614	1	14,14,15	0.47	0	17,19,21	1.26	2 (11%)

In the following table, the Chirals column lists the number of chiral outliers, the number of chiral centers analysed, the number of these observed in the model and the number defined in the Chemical Component Dictionary. Similar counts are reported in the Torsion and Rings columns. '-' means no outliers of that kind were identified.

Mol	Type	Chain	Res	Link	Chirals	Torsions	Rings
5	NAG	A	613	1	-	2/6/23/26	0/1/1/1
5	NAG	B	614	1	-	4/6/23/26	0/1/1/1

There are no bond length outliers.

All (3) bond angle outliers are listed below:

Mol	Chain	Res	Type	Atoms	Z	Observed(°)	Ideal(°)
5	B	614	NAG	C1-O5-C5	3.08	116.37	112.19
5	A	613	NAG	O5-C5-C6	2.29	110.80	107.20
5	B	614	NAG	C8-C7-N2	2.07	119.61	116.10

There are no chirality outliers.

All (6) torsion outliers are listed below:

Mol	Chain	Res	Type	Atoms
5	A	613	NAG	C8-C7-N2-C2
5	A	613	NAG	O7-C7-N2-C2
5	B	614	NAG	C8-C7-N2-C2
5	B	614	NAG	O7-C7-N2-C2
5	B	614	NAG	C4-C5-C6-O6
5	B	614	NAG	O5-C5-C6-O6

There are no ring outliers.

No monomer is involved in short contacts.

5.7 Other polymers [i](#)

There are no such residues in this entry.

5.8 Polymer linkage issues

There are no chain breaks in this entry.

6 Fit of model and data

6.1 Protein, DNA and RNA chains

In the following table, the column labelled ‘#RSRZ> 2’ contains the number (and percentage) of RSRZ outliers, followed by percent RSRZ outliers for the chain as percentile scores relative to all X-ray entries and entries of similar resolution. The OWAB column contains the minimum, median, 95th percentile and maximum values of the occupancy-weighted average B-factor per residue. The column labelled ‘Q< 0.9’ lists the number of (and percentage) of residues with an average occupancy less than 0.9.

Mol	Chain	Analysed	<RSRZ>	#RSRZ>2	OWAB(Å ²)	Q<0.9
1	A	500/521 (95%)	-0.42	10 (2%) 65 61	15, 24, 38, 64	0
1	B	500/521 (95%)	-0.35	14 (2%) 53 47	16, 27, 48, 62	0
All	All	1000/1042 (95%)	-0.39	24 (2%) 59 54	15, 25, 44, 64	0

All (24) RSRZ outliers are listed below:

Mol	Chain	Res	Type	RSRZ
1	A	385	GLN	6.3
1	A	384	ALA	4.7
1	A	386	ASP	4.4
1	B	334	PRO	4.1
1	A	382	GLN	3.9
1	B	333	THR	3.5
1	B	385	GLN	3.5
1	B	440	GLU	3.3
1	B	382	GLN	3.2
1	B	384	ALA	2.9
1	B	156	LYS	2.8
1	B	332	SER	2.8
1	B	494	PRO	2.8
1	A	399	LEU	2.5
1	A	156	LYS	2.4
1	B	312	THR	2.4
1	A	103	VAL	2.4
1	A	383	ALA	2.3
1	B	151	LYS	2.3
1	B	498	ALA	2.3
1	A	473	LEU	2.2
1	A	488	VAL	2.2
1	B	150	PRO	2.1
1	B	313	ALA	2.0

6.2 Non-standard residues in protein, DNA, RNA chains [i](#)

There are no non-standard protein/DNA/RNA residues in this entry.

6.3 Carbohydrates [i](#)

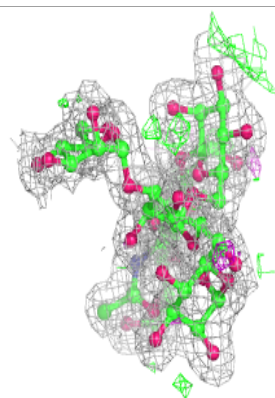
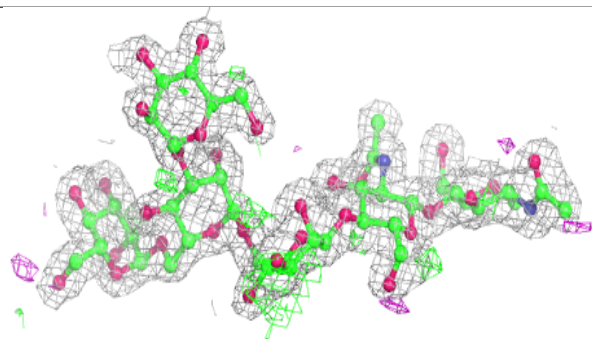
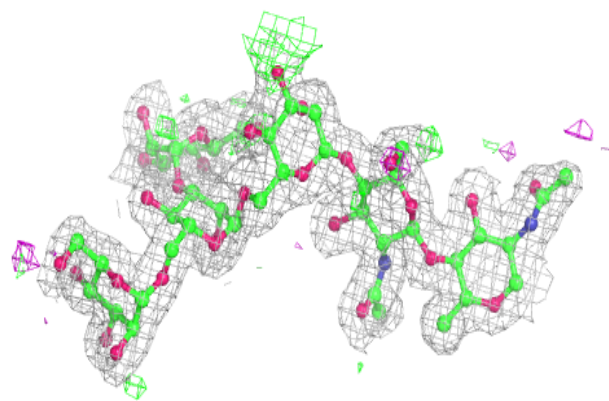
In the following table, the Atoms column lists the number of modelled atoms in the group and the number defined in the chemical component dictionary. The B-factors column lists the minimum, median, 95th percentile and maximum values of B factors of atoms in the group. The column labelled 'Q< 0.9' lists the number of atoms with occupancy less than 0.9.

Mol	Type	Chain	Res	Atoms	RSCC	RSR	B-factors(Å ²)	Q<0.9
2	MAN	D	5	11/12	0.65	0.37	63,64,65,65	0
3	MAN	E	5	11/12	0.70	0.32	80,81,82,83	0
4	MAN	F	6	11/12	0.73	0.18	69,73,75,75	0
3	MAN	E	4	11/12	0.77	0.27	70,73,74,77	0
4	MAN	F	7	11/12	0.81	0.38	77,79,80,81	0
4	MAN	F	5	11/12	0.82	0.31	80,80,81,81	0
2	MAN	D	6	11/12	0.82	0.19	52,56,57,58	0
4	MAN	F	4	11/12	0.83	0.23	75,77,78,79	0
4	BMA	F	3	11/12	0.84	0.25	66,69,73,74	0
2	BMA	D	3	11/12	0.85	0.21	47,50,52,52	0
2	MAN	D	4	11/12	0.90	0.21	54,56,57,60	0
3	MAN	E	6	11/12	0.90	0.32	60,61,63,65	0
2	NAG	D	2	14/15	0.91	0.14	33,34,40,42	0
3	BMA	E	3	11/12	0.91	0.19	47,52,56,62	0
4	NAG	F	2	14/15	0.92	0.11	47,49,56,59	0
2	BMA	C	3	11/12	0.94	0.08	27,31,37,37	0
2	MAN	C	6	11/12	0.96	0.07	33,34,36,37	0
2	MAN	C	5	11/12	0.96	0.15	36,37,39,39	0
2	NAG	D	1	14/15	0.96	0.08	28,30,32,32	0
2	NAG	C	2	14/15	0.97	0.06	16,22,30,32	0
4	NAG	F	1	14/15	0.97	0.09	36,38,39,43	0
2	NAG	C	1	14/15	0.97	0.07	19,21,30,32	0
3	NAG	E	2	14/15	0.97	0.11	19,25,35,36	0
2	MAN	C	4	11/12	0.97	0.08	31,31,33,35	0
3	NAG	E	1	14/15	0.97	0.08	22,24,33,34	0

The following is a graphical depiction of the model fit to experimental electron density for oligosaccharide. Each fit is shown from different orientation to approximate a three-dimensional view.

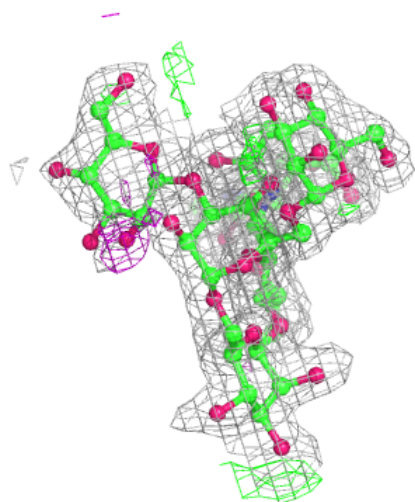
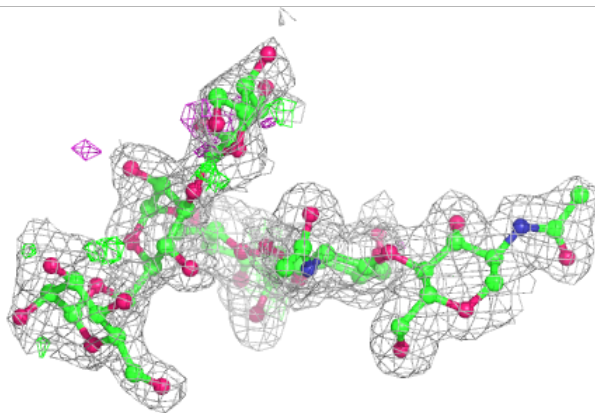
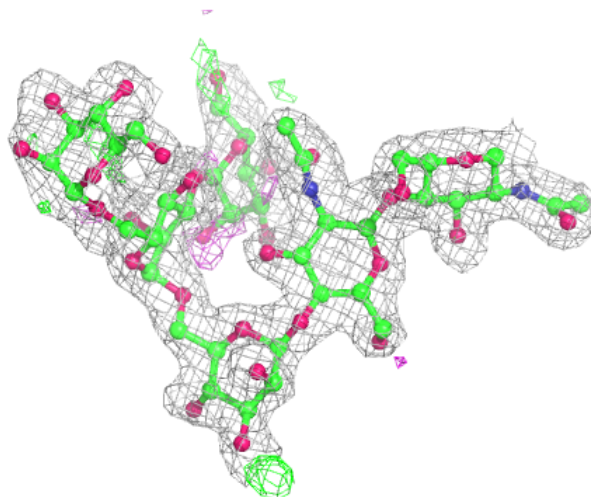
Electron density around Chain C:

$2mF_o-DF_c$ (at 0.7 rmsd) in gray
 mF_o-DF_c (at 3 rmsd) in purple (negative)
and green (positive)



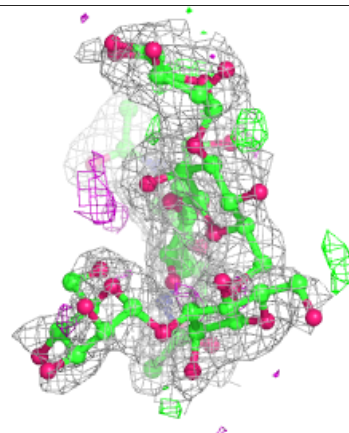
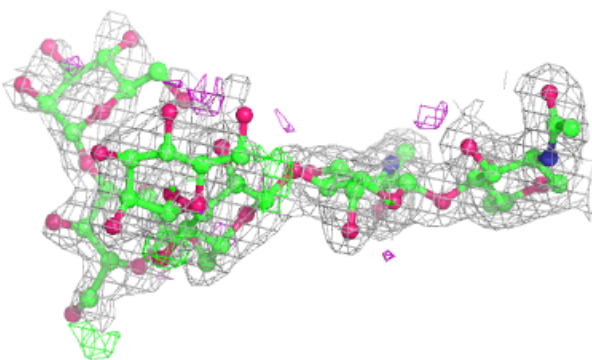
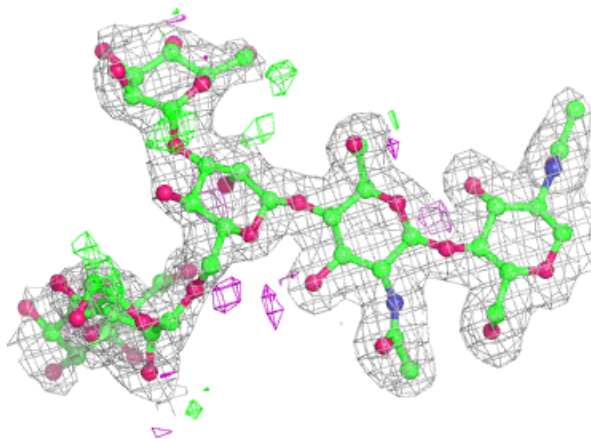
Electron density around Chain D:

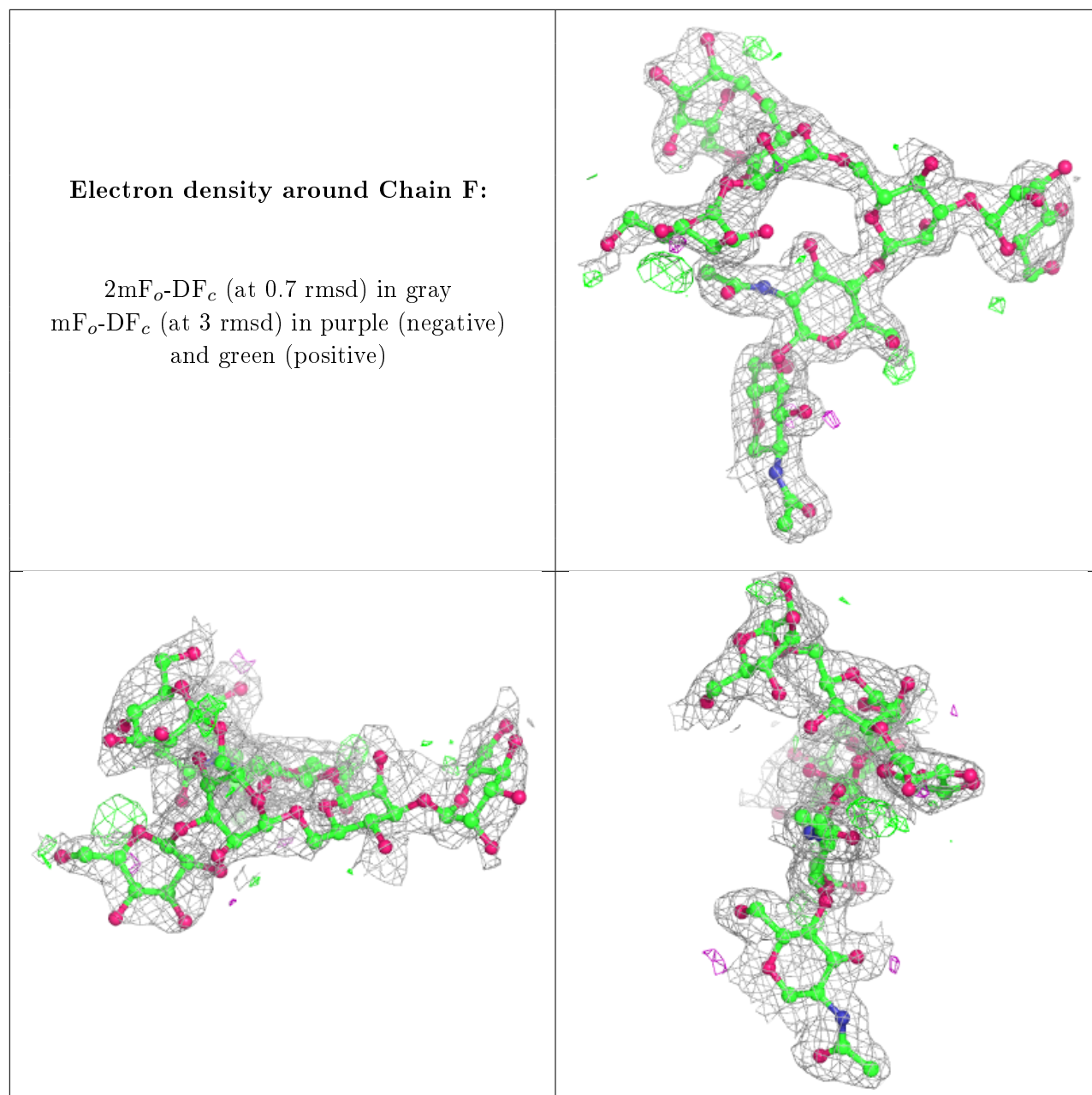
$2mF_o-DF_c$ (at 0.7 rmsd) in gray
 mF_o-DF_c (at 3 rmsd) in purple (negative)
and green (positive)



Electron density around Chain E:

$2mF_o-DF_c$ (at 0.7 rmsd) in gray
 mF_o-DF_c (at 3 rmsd) in purple (negative)
and green (positive)





6.4 Ligands [i](#)

In the following table, the Atoms column lists the number of modelled atoms in the group and the number defined in the chemical component dictionary. The B-factors column lists the minimum, median, 95th percentile and maximum values of B factors of atoms in the group. The column labelled 'Q< 0.9' lists the number of atoms with occupancy less than 0.9.

Mol	Type	Chain	Res	Atoms	RSCC	RSR	B-factors(Å ²)	Q<0.9
5	NAG	A	613	14/15	0.74	0.40	46,52,55,55	0
5	NAG	B	614	14/15	0.82	0.19	47,52,54,55	0
6	CU	A	617	1/1	0.99	0.04	25,25,25,25	0

Continued on next page...

Continued from previous page...

Mol	Type	Chain	Res	Atoms	RSCC	RSR	B-factors(\AA^2)	Q<0.9
6	CU	B	618	1/1	0.99	0.02	27,27,27,27	0
6	CU	A	616	1/1	1.00	0.05	24,24,24,24	0
6	CU	A	614	1/1	1.00	0.02	28,28,28,28	0
6	CU	B	617	1/1	1.00	0.06	27,27,27,27	0
6	CU	B	616	1/1	1.00	0.03	25,25,25,25	0
6	CU	B	615	1/1	1.00	0.02	31,31,31,31	0
6	CU	A	615	1/1	1.00	0.03	22,22,22,22	0

6.5 Other polymers [i](#)

There are no such residues in this entry.