



Full wwPDB X-ray Structure Validation Report ⓘ

Nov 22, 2023 – 09:34 PM JST

PDB ID : 7X4L
Title : Crystal structure of Bacteroides thetaiotaomicron glutamate decarboxylase mutant Y303F-PLP complex
Authors : Liu, S.; Guoming, D.; Yulu, W.; Boting, W.; Xin, F.
Deposited on : 2022-03-02
Resolution : 2.59 Å(reported)

This is a Full wwPDB X-ray Structure Validation Report for a publicly released PDB entry.

We welcome your comments at validation@mail.wwpdb.org

A user guide is available at

<https://www.wwpdb.org/validation/2017/XrayValidationReportHelp>

with specific help available everywhere you see the ⓘ symbol.

The types of validation reports are described at

<http://www.wwpdb.org/validation/2017/FAQs#types>.

The following versions of software and data (see [references ⓘ](#)) were used in the production of this report:

MolProbity : 4.02b-467
Mogul : 1.8.5 (274361), CSD as541be (2020)
Xtriage (Phenix) : 1.13
EDS : 2.36
buster-report : 1.1.7 (2018)
Percentile statistics : 20191225.v01 (using entries in the PDB archive December 25th 2019)
Refmac : 5.8.0158
CCP4 : 7.0.044 (Gargrove)
Ideal geometry (proteins) : Engh & Huber (2001)
Ideal geometry (DNA, RNA) : Parkinson et al. (1996)
Validation Pipeline (wwPDB-VP) : 2.36

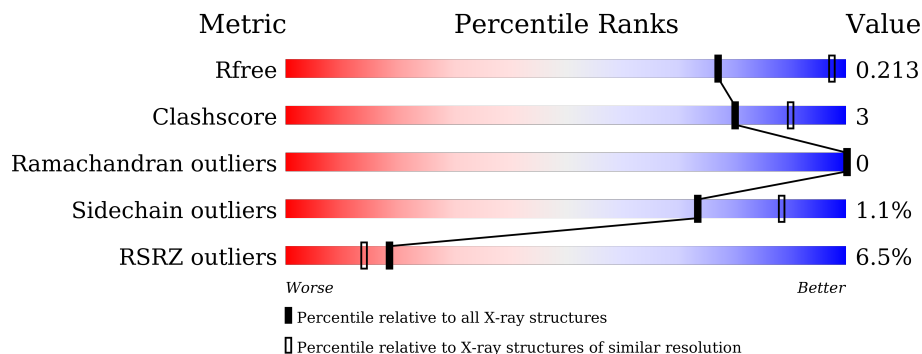
1 Overall quality at a glance

The following experimental techniques were used to determine the structure:

X-RAY DIFFRACTION

The reported resolution of this entry is 2.59 Å.

Percentile scores (ranging between 0-100) for global validation metrics of the entry are shown in the following graphic. The table shows the number of entries on which the scores are based.



Metric	Whole archive (#Entries)	Similar resolution (#Entries, resolution range(Å))
R_{free}	130704	3163 (2.60-2.60)
Clashscore	141614	3518 (2.60-2.60)
Ramachandran outliers	138981	3455 (2.60-2.60)
Sidechain outliers	138945	3455 (2.60-2.60)
RSRZ outliers	127900	3104 (2.60-2.60)

The table below summarises the geometric issues observed across the polymeric chains and their fit to the electron density. The red, orange, yellow and green segments of the lower bar indicate the fraction of residues that contain outliers for ≥ 3 , 2, 1 and 0 types of geometric quality criteria respectively. A grey segment represents the fraction of residues that are not modelled. The numeric value for each fraction is indicated below the corresponding segment, with a dot representing fractions $\leq 5\%$. The upper red bar (where present) indicates the fraction of residues that have poor fit to the electron density. The numeric value is given above the bar.

Mol	Chain	Length	Quality of chain
1	A	481	 4% 88% 5% 7%
1	B	481	 4% 87% 6% 6%
1	C	481	 6% 85% 7% 7%
1	D	481	 9% 86% 7% 6%
1	E	481	 5% 88% 5% 8%
1	F	481	 7% 86% 7% 6%

The following table lists non-polymeric compounds, carbohydrate monomers and non-standard residues in protein, DNA, RNA chains that are outliers for geometric or electron-density-fit criteria:

Mol	Type	Chain	Res	Chirality	Geometry	Clashes	Electron density
2	PLP	A	501	-	-	X	-
2	PLP	C	501	-	-	X	-
2	PLP	F	501	-	-	X	-

2 Entry composition

There are 3 unique types of molecules in this entry. The entry contains 21530 atoms, of which 0 are hydrogens and 0 are deuteriums.

In the tables below, the ZeroOcc column contains the number of atoms modelled with zero occupancy, the AltConf column contains the number of residues with at least one atom in alternate conformation and the Trace column contains the number of residues modelled with at most 2 atoms.

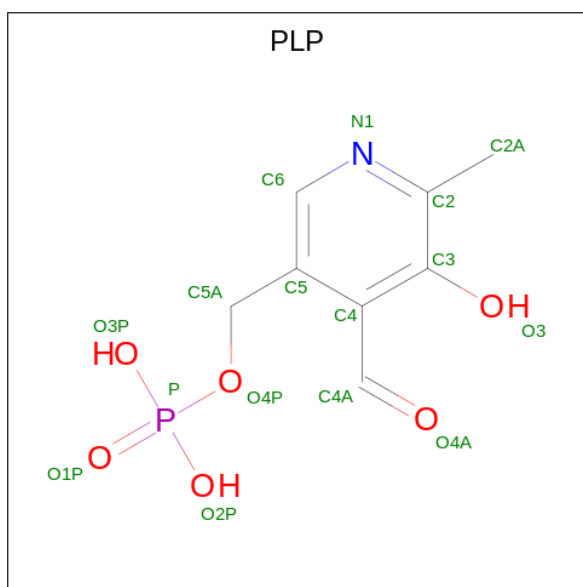
- Molecule 1 is a protein called Glutamate decarboxylase.

Mol	Chain	Residues	Atoms					ZeroOcc	AltConf	Trace
			Total	C	N	O	S			
1	A	448	3542	2294	586	642	20	4	0	0
1	B	450	3551	2301	585	645	20	4	0	0
1	C	446	3514	2282	580	632	20	4	0	0
1	D	450	3523	2285	581	637	20	4	0	0
1	E	444	3514	2283	579	632	20	4	0	0
1	F	450	3547	2301	586	640	20	4	0	0

There are 6 discrepancies between the modelled and reference sequences:

Chain	Residue	Modelled	Actual	Comment	Reference
A	303	PHE	TYR	engineered mutation	UNP Q8A4M9
B	303	PHE	TYR	engineered mutation	UNP Q8A4M9
C	303	PHE	TYR	engineered mutation	UNP Q8A4M9
D	303	PHE	TYR	engineered mutation	UNP Q8A4M9
E	303	PHE	TYR	engineered mutation	UNP Q8A4M9
F	303	PHE	TYR	engineered mutation	UNP Q8A4M9

- Molecule 2 is PYRIDOXAL-5'-PHOSPHATE (three-letter code: PLP) (formula: C₈H₁₀NO₆P) (labeled as "Ligand of Interest" by depositor).



Mol	Chain	Residues	Atoms					ZeroOcc	AltConf
			Total	C	N	O	P		
2	A	1	Total 15	C 8	N 1	O 5	P 1	0	0
2	B	1	Total 15	C 8	N 1	O 5	P 1	0	0
2	C	1	Total 15	C 8	N 1	O 5	P 1	0	0
2	D	1	Total 15	C 8	N 1	O 5	P 1	0	0
2	E	1	Total 15	C 8	N 1	O 5	P 1	0	0
2	F	1	Total 15	C 8	N 1	O 5	P 1	0	0

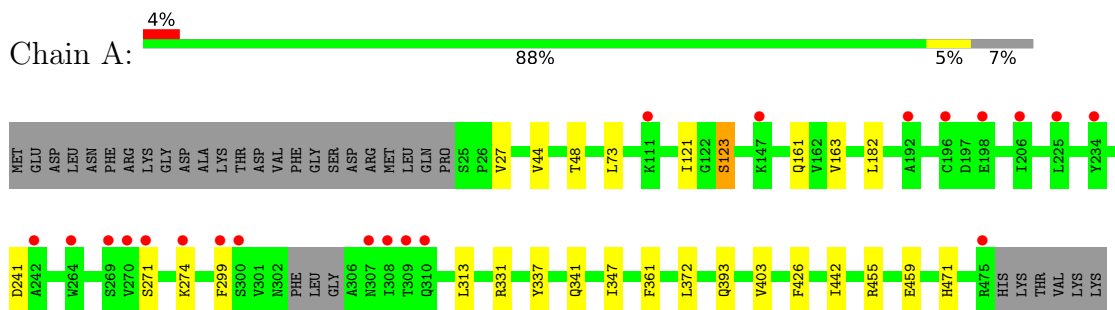
- Molecule 3 is water.

Mol	Chain	Residues	Atoms		ZeroOcc	AltConf
3	A	44	Total 44	O 44	0	0
3	B	64	Total 64	O 64	0	0
3	C	24	Total 24	O 24	0	0
3	D	31	Total 31	O 31	0	0
3	E	40	Total 40	O 40	0	0
3	F	46	Total 46	O 46	0	0

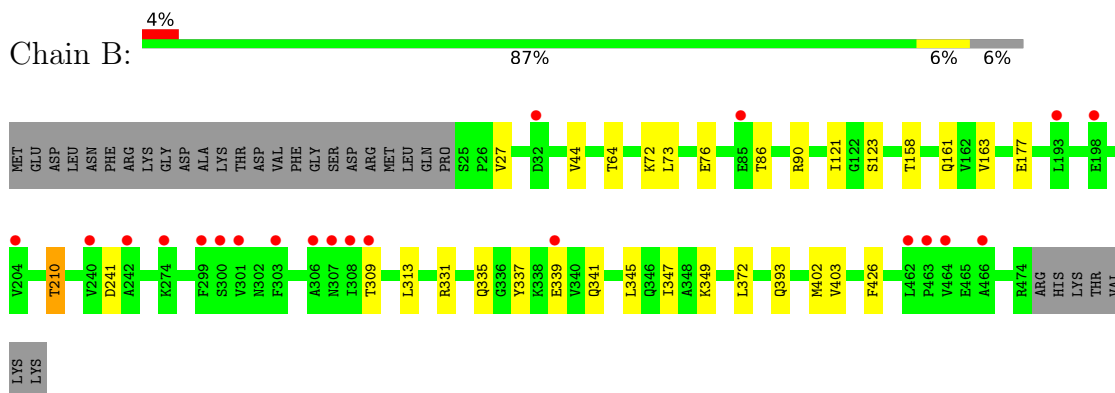
3 Residue-property plots [i](#)

These plots are drawn for all protein, RNA, DNA and oligosaccharide chains in the entry. The first graphic for a chain summarises the proportions of the various outlier classes displayed in the second graphic. The second graphic shows the sequence view annotated by issues in geometry and electron density. Residues are color-coded according to the number of geometric quality criteria for which they contain at least one outlier: green = 0, yellow = 1, orange = 2 and red = 3 or more. A red dot above a residue indicates a poor fit to the electron density ($RSRZ > 2$). Stretches of 2 or more consecutive residues without any outlier are shown as a green connector. Residues present in the sample, but not in the model, are shown in grey.

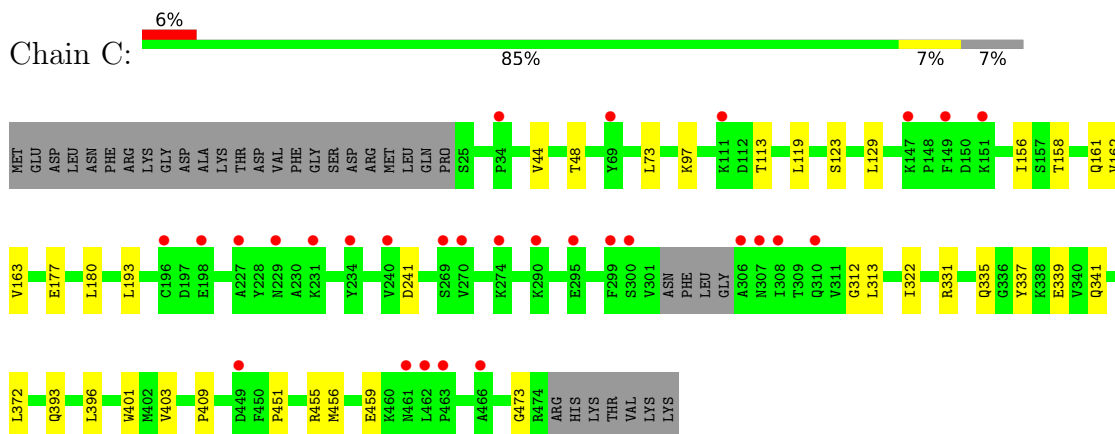
- Molecule 1: Glutamate decarboxylase



- Molecule 1: Glutamate decarboxylase

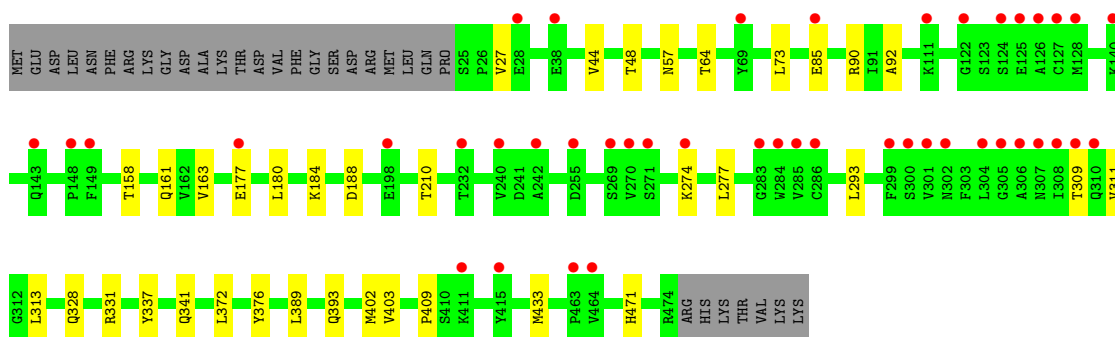


- Molecule 1: Glutamate decarboxylase



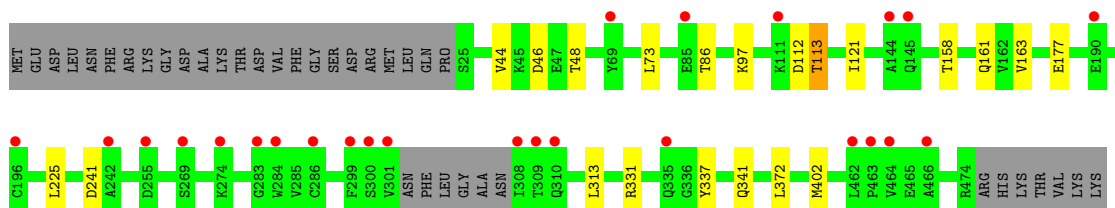
- Molecule 1: Glutamate decarboxylase

Chain D: 9% 86% 7% 6%



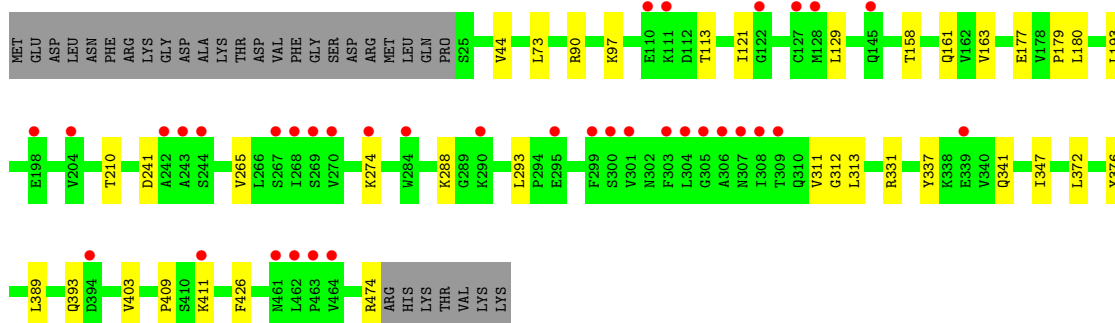
- Molecule 1: Glutamate decarboxylase

Chain E: 5% 88% 8%



- Molecule 1: Glutamate decarboxylase

Chain F: 7% 86% 7% 6%



4 Data and refinement statistics i

Property	Value	Source
Space group	P 21 21 21	Depositor
Cell constants a, b, c, α , β , γ	155.45Å 176.38Å 176.80Å 90.00° 90.00° 90.00°	Depositor
Resolution (Å)	29.40 – 2.59 29.40 – 2.59	Depositor EDS
% Data completeness (in resolution range)	99.3 (29.40-2.59) 99.4 (29.40-2.59)	Depositor EDS
R_{merge}	0.08	Depositor
R_{sym}	(Not available)	Depositor
$\langle I/\sigma(I) \rangle$ ¹	1.98 (at 2.57Å)	Xtrriage
Refinement program	PHENIX (1.19.1_4122: ???)	Depositor
R, R_{free}	0.203 , 0.214 0.203 , 0.213	Depositor DCC
R_{free} test set	7436 reflections (4.94%)	wwPDB-VP
Wilson B-factor (Å ²)	59.4	Xtrriage
Anisotropy	0.075	Xtrriage
Bulk solvent k_{sol} (e/Å ³), B_{sol} (Å ²)	0.30 , 37.5	EDS
L-test for twinning ²	$\langle L \rangle = 0.48$, $\langle L^2 \rangle = 0.30$	Xtrriage
Estimated twinning fraction	0.017 for -h,l,k	Xtrriage
F_o, F_c correlation	0.94	EDS
Total number of atoms	21530	wwPDB-VP
Average B, all atoms (Å ²)	66.0	wwPDB-VP

Xtrriage's analysis on translational NCS is as follows: *The largest off-origin peak in the Patterson function is 1.78% of the height of the origin peak. No significant pseudotranslation is detected.*

¹Intensities estimated from amplitudes.

²Theoretical values of $\langle |L| \rangle$, $\langle L^2 \rangle$ for acentric reflections are 0.5, 0.333 respectively for untwinned datasets, and 0.375, 0.2 for perfectly twinned datasets.

5 Model quality [i](#)

5.1 Standard geometry [i](#)

Bond lengths and bond angles in the following residue types are not validated in this section: PLP

The Z score for a bond length (or angle) is the number of standard deviations the observed value is removed from the expected value. A bond length (or angle) with $|Z| > 5$ is considered an outlier worth inspection. RMSZ is the root-mean-square of all Z scores of the bond lengths (or angles).

Mol	Chain	Bond lengths		Bond angles	
		RMSZ	# Z >5	RMSZ	# Z >5
1	A	0.25	0/3639	0.48	0/4957
1	B	0.25	0/3649	0.47	0/4971
1	C	0.25	0/3611	0.47	0/4919
1	D	0.27	0/3621	0.48	0/4940
1	E	0.25	0/3611	0.47	0/4917
1	F	0.27	0/3645	0.48	0/4965
All	All	0.26	0/21776	0.47	0/29669

There are no bond length outliers.

There are no bond angle outliers.

There are no chirality outliers.

There are no planarity outliers.

5.2 Too-close contacts [i](#)

In the following table, the Non-H and H(model) columns list the number of non-hydrogen atoms and hydrogen atoms in the chain respectively. The H(added) column lists the number of hydrogen atoms added and optimized by MolProbity. The Clashes column lists the number of clashes within the asymmetric unit, whereas Symm-Clashes lists symmetry-related clashes.

Mol	Chain	Non-H	H(model)	H(added)	Clashes	Symm-Clashes
1	A	3542	0	3454	20	0
1	B	3551	0	3465	21	0
1	C	3514	0	3438	25	0
1	D	3523	0	3416	23	0
1	E	3514	0	3452	16	0
1	F	3547	0	3468	26	0
2	A	15	0	6	6	0

Continued on next page...

Continued from previous page...

Mol	Chain	Non-H	H(model)	H(added)	Clashes	Symm-Clashes
2	B	15	0	6	5	0
2	C	15	0	6	6	0
2	D	15	0	6	3	0
2	E	15	0	6	2	0
2	F	15	0	6	6	0
3	A	44	0	0	0	0
3	B	64	0	0	0	0
3	C	24	0	0	0	0
3	D	31	0	0	0	0
3	E	40	0	0	0	0
3	F	46	0	0	0	0
All	All	21530	0	20729	113	0

The all-atom clashscore is defined as the number of clashes found per 1000 atoms (including hydrogen atoms). The all-atom clashscore for this structure is 3.

All (113) close contacts within the same asymmetric unit are listed below, sorted by their clash magnitude.

Atom-1	Atom-2	Interatomic distance (Å)	Clash overlap (Å)
1:C:241:ASP:OD2	2:C:501:PLP:H2A2	1.61	1.00
1:B:241:ASP:OD2	2:B:501:PLP:H2A2	1.70	0.92
1:D:274:LYS:NZ	1:D:471:HIS:NE2	2.20	0.89
1:F:274:LYS:NZ	2:F:501:PLP:C5A	2.37	0.86
1:A:274:LYS:NZ	2:A:501:PLP:C5A	2.38	0.84
1:F:241:ASP:OD2	2:F:501:PLP:H2A2	1.80	0.81
1:A:241:ASP:OD2	2:A:501:PLP:H2A2	1.88	0.74
1:D:274:LYS:NZ	1:D:471:HIS:CD2	2.58	0.71
1:A:274:LYS:NZ	2:A:501:PLP:H5A1	2.11	0.66
1:F:274:LYS:NZ	2:F:501:PLP:H5A2	2.11	0.65
1:F:274:LYS:NZ	2:F:501:PLP:H5A1	2.11	0.64
1:D:293:LEU:HD21	1:D:311:VAL:HG21	1.85	0.59
1:C:313:LEU:HD13	1:D:313:LEU:HD13	1.85	0.58
1:B:90:ARG:NH2	1:E:46:ASP:O	2.37	0.58
1:C:335:GLN:O	1:C:339:GLU:HG2	2.04	0.57
1:B:72:LYS:NZ	1:B:76:GLU:OE2	2.38	0.56
1:A:274:LYS:NZ	2:A:501:PLP:H5A2	2.18	0.55
1:A:123:SER:HB2	1:A:271:SER:OG	2.07	0.54
1:B:86:THR:HG22	1:E:402:MET:HE1	1.89	0.54
1:C:97:LYS:HD2	1:D:27:VAL:HA	1.88	0.54
1:C:180:LEU:HD12	1:C:409:PRO:HG2	1.90	0.53
1:B:345:LEU:HG	1:B:349:LYS:HE2	1.91	0.53

Continued on next page...

Continued from previous page...

Atom-1	Atom-2	Interatomic distance (Å)	Clash overlap (Å)
1:C:129:LEU:HD11	1:C:312:GLY:HA2	1.91	0.53
1:D:180:LEU:HD12	1:D:409:PRO:HG2	1.90	0.53
1:B:44:VAL:HG11	1:E:73:LEU:HD21	1.92	0.52
1:F:158:THR:HG22	1:F:177:GLU:HB3	1.92	0.52
1:A:313:LEU:HD13	1:F:313:LEU:HD13	1.92	0.51
1:B:161:GLN:OE1	1:B:163:VAL:HG13	2.11	0.51
1:C:123:SER:HB2	2:C:501:PLP:C5A	2.41	0.50
1:C:241:ASP:OD2	2:C:501:PLP:C2A	2.47	0.50
1:B:73:LEU:HD21	1:E:44:VAL:HG11	1.94	0.50
1:C:123:SER:HB2	2:C:501:PLP:H5A1	1.93	0.50
1:F:158:THR:O	1:F:474:ARG:NH2	2.44	0.49
1:D:161:GLN:OE1	1:D:163:VAL:HG13	2.12	0.49
1:B:335:GLN:O	1:B:339:GLU:HG2	2.13	0.49
1:F:161:GLN:OE1	1:F:163:VAL:HG13	2.13	0.49
1:C:161:GLN:OE1	1:C:163:VAL:HG13	2.12	0.48
1:E:337:TYR:O	1:E:341:GLN:HG2	2.13	0.48
1:B:27:VAL:HA	1:E:97:LYS:HD2	1.96	0.48
1:D:85:GLU:HG2	1:D:92:ALA:HB2	1.96	0.48
1:F:241:ASP:OD2	2:F:501:PLP:C2A	2.57	0.48
1:B:241:ASP:OD2	2:B:501:PLP:C2A	2.54	0.47
1:A:161:GLN:OE1	1:A:163:VAL:HG13	2.14	0.47
1:E:241:ASP:OD2	2:E:501:PLP:H2A2	2.14	0.47
1:C:73:LEU:HD21	1:D:44:VAL:HG11	1.95	0.47
1:C:241:ASP:CG	2:C:501:PLP:H2A2	2.34	0.47
1:E:161:GLN:HB2	2:E:501:PLP:H2A3	1.97	0.47
1:E:158:THR:HG22	1:E:177:GLU:HB3	1.97	0.46
1:D:337:TYR:O	1:D:341:GLN:HG2	2.15	0.46
1:D:376:TYR:HA	1:D:389:LEU:HD11	1.97	0.46
1:D:161:GLN:HB2	2:D:501:PLP:H2A3	1.97	0.46
1:A:44:VAL:HG11	1:F:73:LEU:HD21	1.98	0.46
1:B:337:TYR:O	1:B:341:GLN:HG2	2.16	0.45
1:E:161:GLN:OE1	1:E:163:VAL:HG13	2.16	0.45
1:A:337:TYR:O	1:A:341:GLN:HG2	2.16	0.45
1:A:471:HIS:CD2	2:A:501:PLP:C4A	3.00	0.45
1:C:44:VAL:HG11	1:D:73:LEU:HD21	1.99	0.45
1:C:337:TYR:O	1:C:341:GLN:HG2	2.17	0.45
1:C:396:LEU:HB3	1:C:401:TRP:HB2	1.99	0.45
1:F:393:GLN:HG3	1:F:403:VAL:O	2.17	0.45
1:A:44:VAL:O	1:A:48:THR:HG23	2.17	0.45
1:B:121:ILE:HG13	1:E:121:ILE:HG13	1.99	0.45
1:D:44:VAL:O	1:D:48:THR:HG23	2.17	0.45

Continued on next page...

Continued from previous page...

Atom-1	Atom-2	Interatomic distance (Å)	Clash overlap (Å)
1:A:73:LEU:HD21	1:F:44:VAL:HG11	2.00	0.44
1:A:161:GLN:HB2	2:A:501:PLP:H2A3	1.98	0.44
1:F:241:ASP:CG	2:F:501:PLP:H2A2	2.38	0.44
1:F:90:ARG:HE	1:F:90:ARG:HB2	1.59	0.44
1:C:455:ARG:NH1	1:C:459:GLU:HG2	2.34	0.43
1:A:27:VAL:HA	1:F:97:LYS:HD2	2.01	0.43
1:C:193:LEU:HD23	1:C:193:LEU:HA	1.82	0.43
1:E:112:ASP:OD1	1:E:113:THR:N	2.51	0.43
1:F:293:LEU:HD21	1:F:311:VAL:HG21	1.99	0.43
1:D:158:THR:HG22	1:D:177:GLU:HB3	2.00	0.43
1:F:347:ILE:HD13	1:F:426:PHE:O	2.19	0.43
1:F:180:LEU:HD12	1:F:409:PRO:HG2	2.01	0.43
1:A:347:ILE:HD13	1:A:426:PHE:O	2.19	0.43
1:D:90:ARG:HE	1:D:90:ARG:HB2	1.46	0.43
1:E:44:VAL:O	1:E:48:THR:HG23	2.19	0.43
1:F:193:LEU:HA	1:F:193:LEU:HD13	1.82	0.43
1:C:44:VAL:O	1:C:48:THR:HG23	2.19	0.43
1:C:393:GLN:HG3	1:C:403:VAL:O	2.19	0.42
1:F:129:LEU:HD11	1:F:312:GLY:HA2	2.01	0.42
1:C:158:THR:HG22	1:C:177:GLU:HB3	2.01	0.42
1:B:393:GLN:HG3	1:B:403:VAL:O	2.19	0.42
1:D:57:ASN:HA	1:D:402:MET:HB2	2.02	0.42
1:F:337:TYR:O	1:F:341:GLN:HG2	2.19	0.42
1:B:158:THR:HG22	1:B:177:GLU:HB3	2.00	0.42
1:B:210:THR:HG22	2:B:501:PLP:O3	2.19	0.42
1:B:241:ASP:CG	2:B:501:PLP:H2A2	2.39	0.42
1:A:121:ILE:HG13	1:F:121:ILE:HG13	2.00	0.42
1:C:161:GLN:HB2	2:C:501:PLP:H2A3	2.02	0.42
1:C:162:VAL:HB	1:C:473:GLY:HA3	2.00	0.42
1:D:393:GLN:HG3	1:D:403:VAL:O	2.20	0.42
1:A:393:GLN:HG3	1:A:403:VAL:O	2.20	0.41
1:A:455:ARG:NH1	1:A:459:GLU:HG2	2.35	0.41
1:D:277:LEU:HB2	1:D:328:GLN:HE21	1.85	0.41
1:B:347:ILE:HD13	1:B:426:PHE:O	2.21	0.41
1:F:376:TYR:HA	1:F:389:LEU:HD11	2.02	0.41
1:D:210:THR:OG1	2:D:501:PLP:O3	2.37	0.41
1:F:179:PRO:HB2	1:F:411:LYS:HD2	2.02	0.41
1:B:313:LEU:HD13	1:E:313:LEU:HD13	2.02	0.41
1:A:361:PHE:CE2	1:A:442:ILE:HD11	2.56	0.41
1:D:433:MET:SD	1:F:90:ARG:HD3	2.61	0.41
1:E:225:LEU:HD12	1:E:225:LEU:HA	1.85	0.41

Continued on next page...

Continued from previous page...

Atom-1	Atom-2	Interatomic distance (Å)	Clash overlap (Å)
1:F:265:VAL:O	1:F:288:LYS:HE3	2.21	0.41
1:B:161:GLN:HB2	2:B:501:PLP:H2A3	2.03	0.41
1:A:182:LEU:HD23	1:A:182:LEU:HA	1.90	0.40
1:D:274:LYS:HE3	2:D:501:PLP:C5A	2.52	0.40
1:B:402:MET:HE1	1:E:86:THR:HG22	2.03	0.40
1:C:119:LEU:HD22	1:C:322:ILE:HD11	2.03	0.40
1:C:156:ILE:O	1:C:177:GLU:HA	2.21	0.40
1:C:451:PRO:HB2	1:C:456:MET:HG2	2.04	0.40
1:D:184:LYS:HD2	1:D:188:ASP:HB2	2.02	0.40

There are no symmetry-related clashes.

5.3 Torsion angles [i](#)

5.3.1 Protein backbone [i](#)

In the following table, the Percentiles column shows the percent Ramachandran outliers of the chain as a percentile score with respect to all X-ray entries followed by that with respect to entries of similar resolution.

The Analysed column shows the number of residues for which the backbone conformation was analysed, and the total number of residues.

Mol	Chain	Analysed	Favoured	Allowed	Outliers	Percentiles	
1	A	444/481 (92%)	429 (97%)	15 (3%)	0	100	100
1	B	448/481 (93%)	432 (96%)	16 (4%)	0	100	100
1	C	442/481 (92%)	427 (97%)	15 (3%)	0	100	100
1	D	448/481 (93%)	434 (97%)	14 (3%)	0	100	100
1	E	440/481 (92%)	425 (97%)	15 (3%)	0	100	100
1	F	448/481 (93%)	430 (96%)	18 (4%)	0	100	100
All	All	2670/2886 (92%)	2577 (96%)	93 (4%)	0	100	100

There are no Ramachandran outliers to report.

5.3.2 Protein sidechains [i](#)

In the following table, the Percentiles column shows the percent sidechain outliers of the chain as a percentile score with respect to all X-ray entries followed by that with respect to entries of similar resolution.

The Analysed column shows the number of residues for which the sidechain conformation was analysed, and the total number of residues.

Mol	Chain	Analysed	Rotameric	Outliers	Percentiles	
1	A	370/414 (89%)	366 (99%)	4 (1%)	73	88
1	B	371/414 (90%)	365 (98%)	6 (2%)	62	82
1	C	366/414 (88%)	363 (99%)	3 (1%)	81	92
1	D	364/414 (88%)	360 (99%)	4 (1%)	73	88
1	E	369/414 (89%)	366 (99%)	3 (1%)	81	92
1	F	369/414 (89%)	365 (99%)	4 (1%)	73	88
All	All	2209/2484 (89%)	2185 (99%)	24 (1%)	73	88

All (24) residues with a non-rotameric sidechain are listed below:

Mol	Chain	Res	Type
1	A	123	SER
1	A	299	PHE
1	A	331	ARG
1	A	372	LEU
1	B	64	THR
1	B	123	SER
1	B	210	THR
1	B	309	THR
1	B	331	ARG
1	B	372	LEU
1	C	113	THR
1	C	331	ARG
1	C	372	LEU
1	D	64	THR
1	D	309	THR
1	D	331	ARG
1	D	372	LEU
1	E	113	THR
1	E	331	ARG
1	E	372	LEU
1	F	113	THR
1	F	210	THR
1	F	331	ARG
1	F	372	LEU

Sometimes sidechains can be flipped to improve hydrogen bonding and reduce clashes. There are no such sidechains identified.

5.3.3 RNA [i](#)

There are no RNA molecules in this entry.

5.4 Non-standard residues in protein, DNA, RNA chains [i](#)

There are no non-standard protein/DNA/RNA residues in this entry.

5.5 Carbohydrates [i](#)

There are no monosaccharides in this entry.

5.6 Ligand geometry [i](#)

6 ligands are modelled in this entry.

In the following table, the Counts columns list the number of bonds (or angles) for which Mogul statistics could be retrieved, the number of bonds (or angles) that are observed in the model and the number of bonds (or angles) that are defined in the Chemical Component Dictionary. The Link column lists molecule types, if any, to which the group is linked. The Z score for a bond length (or angle) is the number of standard deviations the observed value is removed from the expected value. A bond length (or angle) with $|Z| > 2$ is considered an outlier worth inspection. RMSZ is the root-mean-square of all Z scores of the bond lengths (or angles).

Mol	Type	Chain	Res	Link	Bond lengths			Bond angles		
					Counts	RMSZ	# Z > 2	Counts	RMSZ	# Z > 2
2	PLP	C	501	1	15,15,16	1.12	2 (13%)	20,22,23	1.47	2 (10%)
2	PLP	D	501	1	15,15,16	1.11	2 (13%)	20,22,23	1.48	2 (10%)
2	PLP	A	501	1	15,15,16	1.12	2 (13%)	20,22,23	1.48	2 (10%)
2	PLP	E	501	1	15,15,16	1.12	2 (13%)	20,22,23	1.48	2 (10%)
2	PLP	B	501	1	15,15,16	1.14	2 (13%)	20,22,23	1.48	2 (10%)
2	PLP	F	501	1	15,15,16	1.11	2 (13%)	20,22,23	1.48	2 (10%)

In the following table, the Chirals column lists the number of chiral outliers, the number of chiral centers analysed, the number of these observed in the model and the number defined in the Chemical Component Dictionary. Similar counts are reported in the Torsion and Rings columns. '-' means no outliers of that kind were identified.

Mol	Type	Chain	Res	Link	Chirals	Torsions	Rings
2	PLP	C	501	1	-	0/6/6/8	0/1/1/1
2	PLP	D	501	1	-	0/6/6/8	0/1/1/1
2	PLP	A	501	1	-	0/6/6/8	0/1/1/1

Continued on next page...

Continued from previous page...

Mol	Type	Chain	Res	Link	Chirals	Torsions	Rings
2	PLP	E	501	1	-	0/6/6/8	0/1/1/1
2	PLP	B	501	1	-	0/6/6/8	0/1/1/1
2	PLP	F	501	1	-	0/6/6/8	0/1/1/1

All (12) bond length outliers are listed below:

Mol	Chain	Res	Type	Atoms	Z	Observed(Å)	Ideal(Å)
2	A	501	PLP	C4A-C4	-2.71	1.46	1.51
2	B	501	PLP	C4A-C4	-2.71	1.46	1.51
2	D	501	PLP	C4A-C4	-2.71	1.46	1.51
2	F	501	PLP	C4A-C4	-2.70	1.46	1.51
2	E	501	PLP	C4A-C4	-2.70	1.46	1.51
2	C	501	PLP	C4A-C4	-2.69	1.46	1.51
2	B	501	PLP	C3-C2	-2.60	1.38	1.40
2	C	501	PLP	C3-C2	-2.55	1.38	1.40
2	A	501	PLP	C3-C2	-2.53	1.38	1.40
2	E	501	PLP	C3-C2	-2.51	1.38	1.40
2	D	501	PLP	C3-C2	-2.49	1.38	1.40
2	F	501	PLP	C3-C2	-2.49	1.38	1.40

All (12) bond angle outliers are listed below:

Mol	Chain	Res	Type	Atoms	Z	Observed(°)	Ideal(°)
2	D	501	PLP	O4P-C5A-C5	4.78	118.46	109.35
2	F	501	PLP	O4P-C5A-C5	4.77	118.45	109.35
2	E	501	PLP	O4P-C5A-C5	4.77	118.45	109.35
2	C	501	PLP	O4P-C5A-C5	4.77	118.43	109.35
2	A	501	PLP	O4P-C5A-C5	4.76	118.43	109.35
2	B	501	PLP	O4P-C5A-C5	4.76	118.42	109.35
2	B	501	PLP	C4A-C4-C5	2.48	123.49	120.94
2	D	501	PLP	C4A-C4-C5	2.46	123.47	120.94
2	A	501	PLP	C4A-C4-C5	2.46	123.47	120.94
2	F	501	PLP	C4A-C4-C5	2.45	123.46	120.94
2	E	501	PLP	C4A-C4-C5	2.43	123.44	120.94
2	C	501	PLP	C4A-C4-C5	2.42	123.42	120.94

There are no chirality outliers.

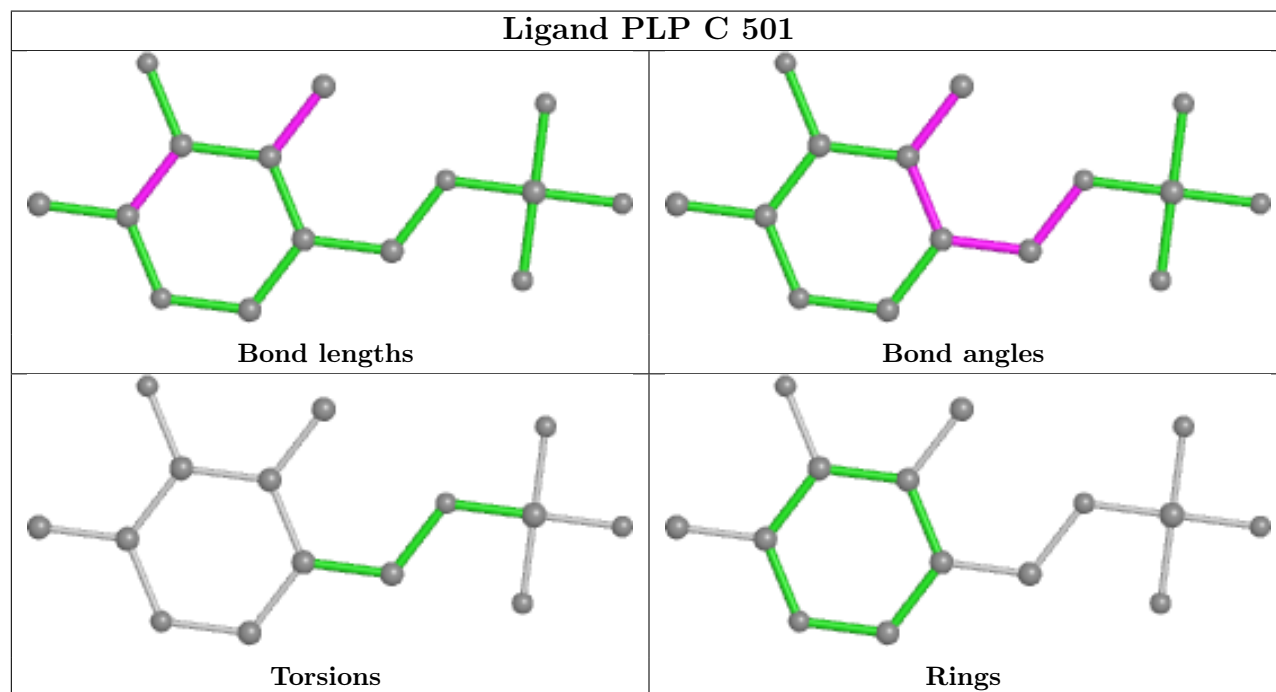
There are no torsion outliers.

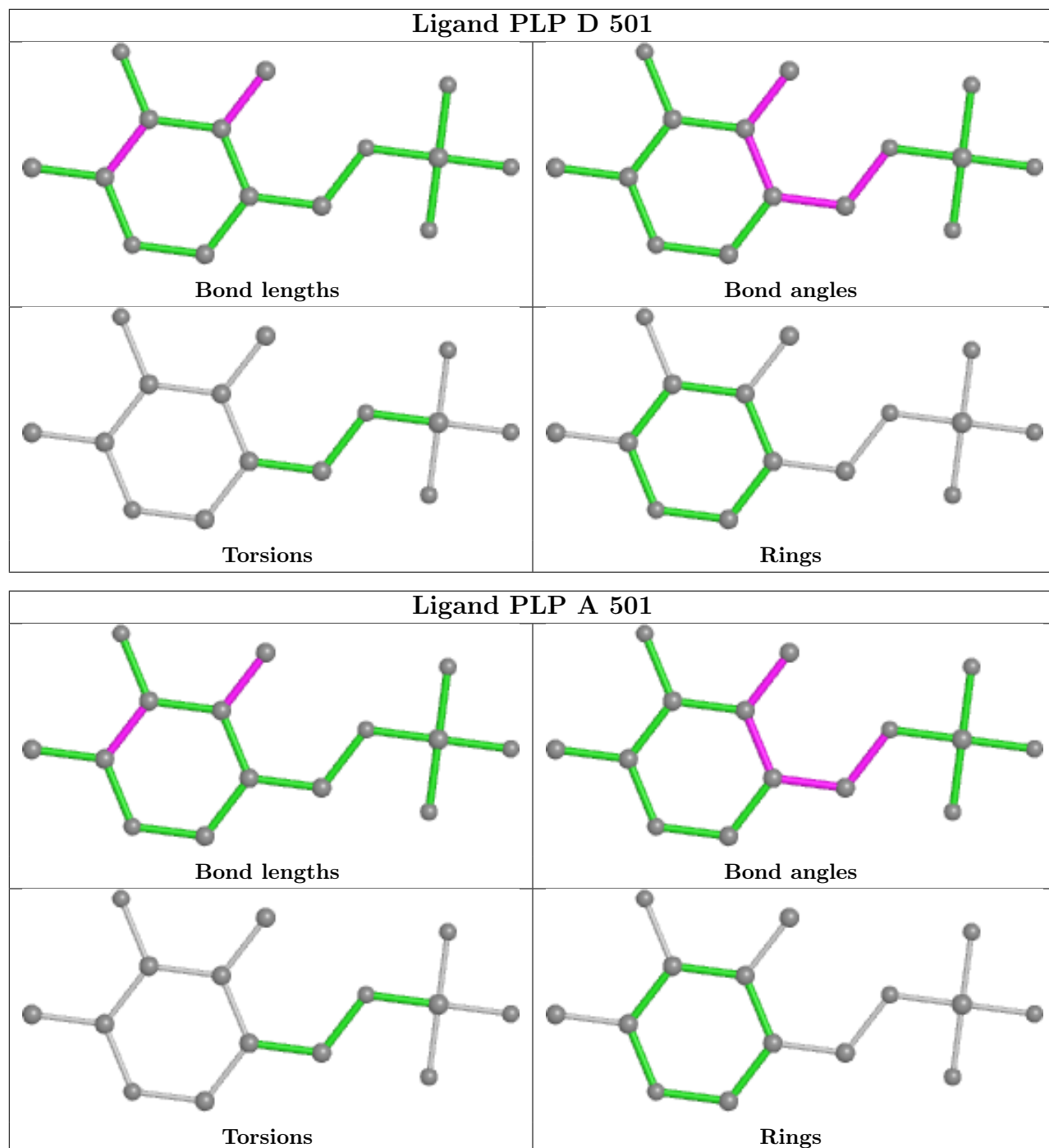
There are no ring outliers.

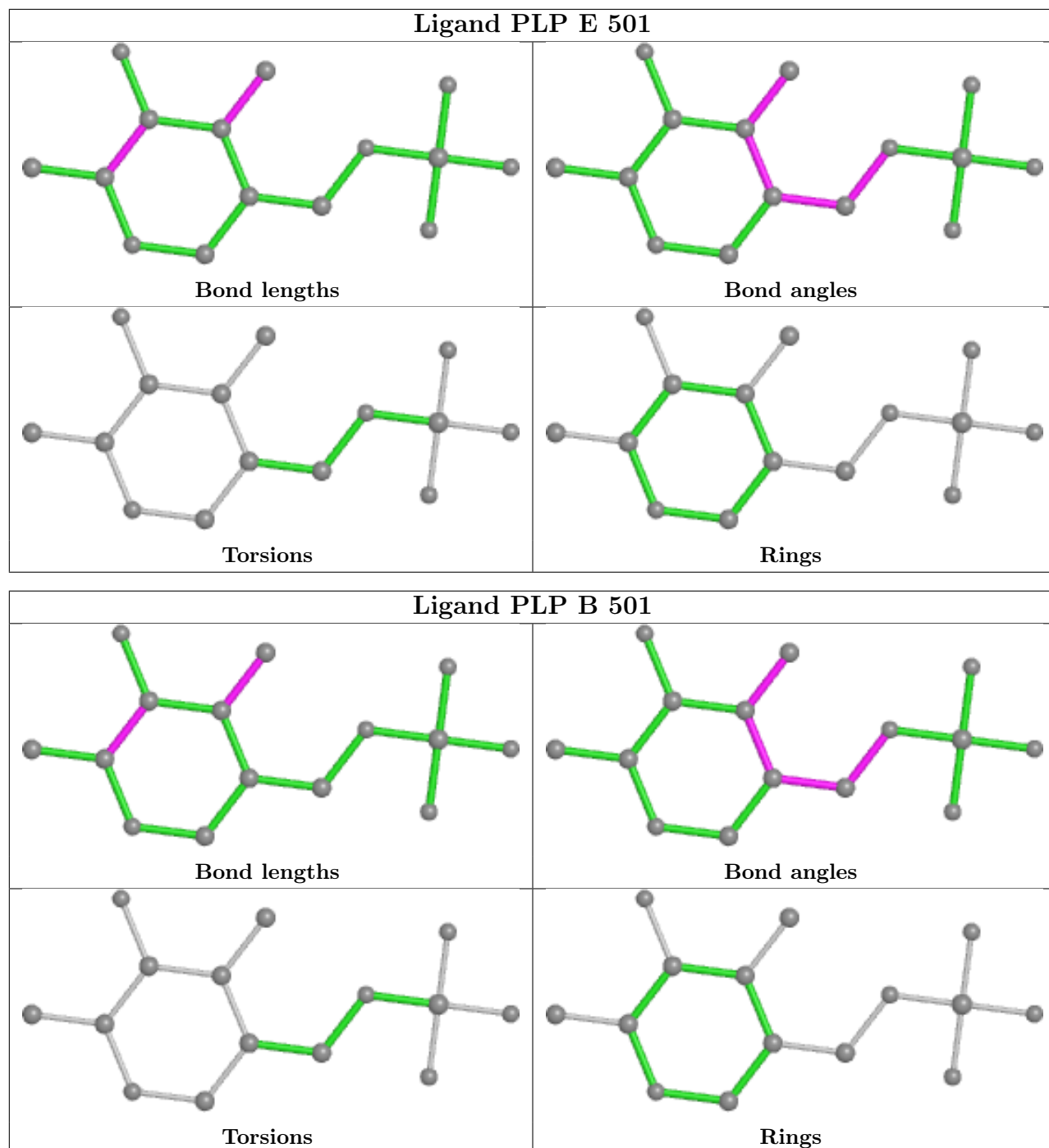
6 monomers are involved in 28 short contacts:

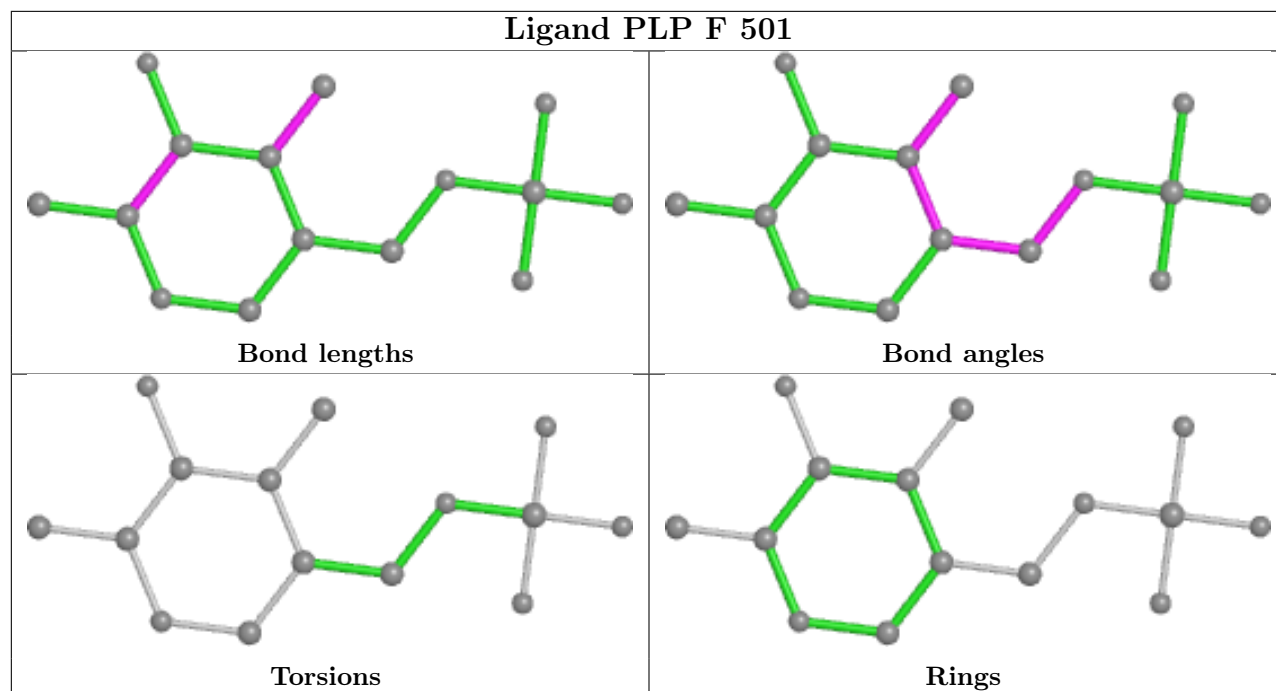
Mol	Chain	Res	Type	Clashes	Symm-Clashes
2	C	501	PLP	6	0
2	D	501	PLP	3	0
2	A	501	PLP	6	0
2	E	501	PLP	2	0
2	B	501	PLP	5	0
2	F	501	PLP	6	0

The following is a two-dimensional graphical depiction of Mogul quality analysis of bond lengths, bond angles, torsion angles, and ring geometry for all instances of the Ligand of Interest. In addition, ligands with molecular weight > 250 and outliers as shown on the validation Tables will also be included. For torsion angles, if less than 5% of the Mogul distribution of torsion angles is within 10 degrees of the torsion angle in question, then that torsion angle is considered an outlier. Any bond that is central to one or more torsion angles identified as an outlier by Mogul will be highlighted in the graph. For rings, the root-mean-square deviation (RMSD) between the ring in question and similar rings identified by Mogul is calculated over all ring torsion angles. If the average RMSD is greater than 60 degrees and the minimal RMSD between the ring in question and any Mogul-identified rings is also greater than 60 degrees, then that ring is considered an outlier. The outliers are highlighted in purple. The color gray indicates Mogul did not find sufficient equivalents in the CSD to analyse the geometry.









5.7 Other polymers [i](#)

There are no such residues in this entry.

5.8 Polymer linkage issues [i](#)

There are no chain breaks in this entry.

6 Fit of model and data

6.1 Protein, DNA and RNA chains

In the following table, the column labelled ‘#RSRZ > 2’ contains the number (and percentage) of RSRZ outliers, followed by percent RSRZ outliers for the chain as percentile scores relative to all X-ray entries and entries of similar resolution. The OWAB column contains the minimum, median, 95th percentile and maximum values of the occupancy-weighted average B-factor per residue. The column labelled ‘Q < 0.9’ lists the number of (and percentage) of residues with an average occupancy less than 0.9.

Mol	Chain	Analysed	<RSRZ>	#RSRZ>2	OWAB(Å ²)	Q<0.9
1	A	448/481 (93%)	0.30	21 (4%) 31 25	38, 62, 104, 148	1 (0%)
1	B	450/481 (93%)	0.12	21 (4%) 31 25	35, 54, 88, 113	1 (0%)
1	C	446/481 (92%)	0.30	29 (6%) 18 14	42, 66, 108, 141	1 (0%)
1	D	450/481 (93%)	0.52	44 (9%) 7 5	43, 69, 112, 150	1 (0%)
1	E	444/481 (92%)	0.28	25 (5%) 24 19	42, 61, 97, 133	1 (0%)
1	F	450/481 (93%)	0.36	36 (8%) 12 9	41, 61, 99, 142	1 (0%)
All	All	2688/2886 (93%)	0.31	176 (6%) 18 14	35, 62, 104, 150	6 (0%)

All (176) RSRZ outliers are listed below:

Mol	Chain	Res	Type	RSRZ
1	D	304	LEU	6.8
1	F	274	LYS	5.4
1	D	274	LYS	5.4
1	D	306	ALA	5.2
1	D	305	GLY	4.9
1	F	306	ALA	4.8
1	B	307	ASN	4.7
1	D	307	ASN	4.6
1	D	149	PHE	4.6
1	A	475	ARG	4.6
1	B	301	VAL	4.6
1	A	274	LYS	4.5
1	F	300	SER	4.4
1	F	299	PHE	4.4
1	C	274	LYS	4.1
1	C	308	ILE	4.1
1	C	307	ASN	4.0
1	A	196	CYS	4.0
1	E	144	ALA	4.0

Continued on next page...

Continued from previous page...

Mol	Chain	Res	Type	RSRZ
1	F	295	GLU	3.9
1	D	301	VAL	3.9
1	D	308	ILE	3.8
1	C	306	ALA	3.7
1	A	192	ALA	3.7
1	D	270	VAL	3.7
1	D	464	VAL	3.6
1	A	299	PHE	3.6
1	D	85	GLU	3.6
1	D	310	GLN	3.4
1	B	309	THR	3.4
1	A	198	GLU	3.4
1	E	301	VAL	3.3
1	F	269	SER	3.3
1	D	232	THR	3.3
1	E	309	THR	3.3
1	D	299	PHE	3.2
1	E	286	CYS	3.2
1	C	149	PHE	3.2
1	E	85	GLU	3.2
1	F	301	VAL	3.2
1	A	308	ILE	3.1
1	F	305	GLY	3.1
1	F	303	PHE	3.1
1	D	126	ALA	3.1
1	C	299	PHE	3.1
1	A	242	ALA	3.0
1	B	299	PHE	3.0
1	B	466	ALA	3.0
1	E	274	LYS	3.0
1	D	269	SER	3.0
1	D	283	GLY	3.0
1	D	271	SER	3.0
1	B	85	GLU	2.9
1	E	300	SER	2.9
1	D	69	TYR	2.9
1	A	111	LYS	2.9
1	D	302	ASN	2.9
1	B	308	ILE	2.9
1	C	34	PRO	2.9
1	D	463	PRO	2.9
1	C	229	ASN	2.8

Continued on next page...

Continued from previous page...

Mol	Chain	Res	Type	RSRZ
1	F	411	LYS	2.8
1	A	307	ASN	2.8
1	C	310	GLN	2.8
1	A	269	SER	2.8
1	D	300	SER	2.8
1	E	196	CYS	2.8
1	E	242	ALA	2.8
1	E	255	ASP	2.8
1	C	270	VAL	2.7
1	C	461	ASN	2.7
1	D	28	GLU	2.7
1	A	147	LYS	2.7
1	D	284	TRP	2.7
1	D	127	CYS	2.7
1	D	148	PRO	2.7
1	A	271	SER	2.7
1	F	462	LEU	2.7
1	B	463	PRO	2.7
1	B	464	VAL	2.7
1	E	111	LYS	2.7
1	D	128	MET	2.7
1	E	464	VAL	2.6
1	B	300	SER	2.6
1	A	309	THR	2.6
1	F	110	GLU	2.6
1	F	290	LYS	2.6
1	B	306	ALA	2.6
1	D	38	GLU	2.6
1	E	284	TRP	2.6
1	D	198	GLU	2.6
1	C	463	PRO	2.6
1	B	198	GLU	2.6
1	D	415	TYR	2.6
1	C	466	ALA	2.6
1	F	309	THR	2.6
1	E	299	PHE	2.5
1	A	234	TYR	2.5
1	E	69	TYR	2.5
1	E	463	PRO	2.5
1	A	206	ILE	2.5
1	F	242	ALA	2.5
1	B	32	ASP	2.5

Continued on next page...

Continued from previous page...

Mol	Chain	Res	Type	RSRZ
1	B	274	LYS	2.5
1	F	307	ASN	2.5
1	E	308	ILE	2.5
1	D	255	ASP	2.5
1	C	462	LEU	2.5
1	B	240	VAL	2.4
1	D	124	SER	2.4
1	C	240	VAL	2.4
1	D	177	GLU	2.4
1	C	231	LYS	2.4
1	F	268	ILE	2.4
1	B	242	ALA	2.4
1	C	196	CYS	2.3
1	D	242	ALA	2.3
1	F	244	SER	2.3
1	F	461	ASN	2.3
1	D	240	VAL	2.3
1	F	284	TRP	2.3
1	F	127	CYS	2.3
1	F	243	ALA	2.3
1	F	128	MET	2.3
1	C	227	ALA	2.3
1	C	111	LYS	2.2
1	D	140	LYS	2.2
1	E	310	GLN	2.2
1	F	270	VAL	2.2
1	F	308	ILE	2.2
1	E	145	GLN	2.2
1	E	269	SER	2.2
1	D	143	GLN	2.2
1	F	304	LEU	2.2
1	F	111	LYS	2.2
1	C	69	TYR	2.2
1	C	300	SER	2.2
1	A	270	VAL	2.2
1	C	198	GLU	2.2
1	B	462	LEU	2.2
1	D	286	CYS	2.2
1	A	264	TRP	2.2
1	C	290	LYS	2.2
1	F	198	GLU	2.2
1	F	267	SER	2.2

Continued on next page...

Continued from previous page...

Mol	Chain	Res	Type	RSRZ
1	F	204	VAL	2.1
1	D	111	LYS	2.1
1	B	204	VAL	2.1
1	F	463	PRO	2.1
1	F	145	GLN	2.1
1	E	462	LEU	2.1
1	F	394	ASP	2.1
1	D	285	VAL	2.1
1	F	464	VAL	2.1
1	A	300	SER	2.1
1	D	411	LYS	2.1
1	D	122	GLY	2.1
1	A	310	GLN	2.1
1	D	125	GLU	2.1
1	C	269	SER	2.1
1	C	147	LYS	2.1
1	C	234	TYR	2.1
1	E	283	GLY	2.0
1	F	122	GLY	2.0
1	B	339	GLU	2.0
1	C	295	GLU	2.0
1	D	309	THR	2.0
1	F	339	GLU	2.0
1	E	335	GLN	2.0
1	C	151	LYS	2.0
1	B	303	PHE	2.0
1	C	449	ASP	2.0
1	E	466	ALA	2.0
1	A	225	LEU	2.0
1	B	193	LEU	2.0
1	E	190	GLU	2.0

6.2 Non-standard residues in protein, DNA, RNA chains [i](#)

There are no non-standard protein/DNA/RNA residues in this entry.

6.3 Carbohydrates [i](#)

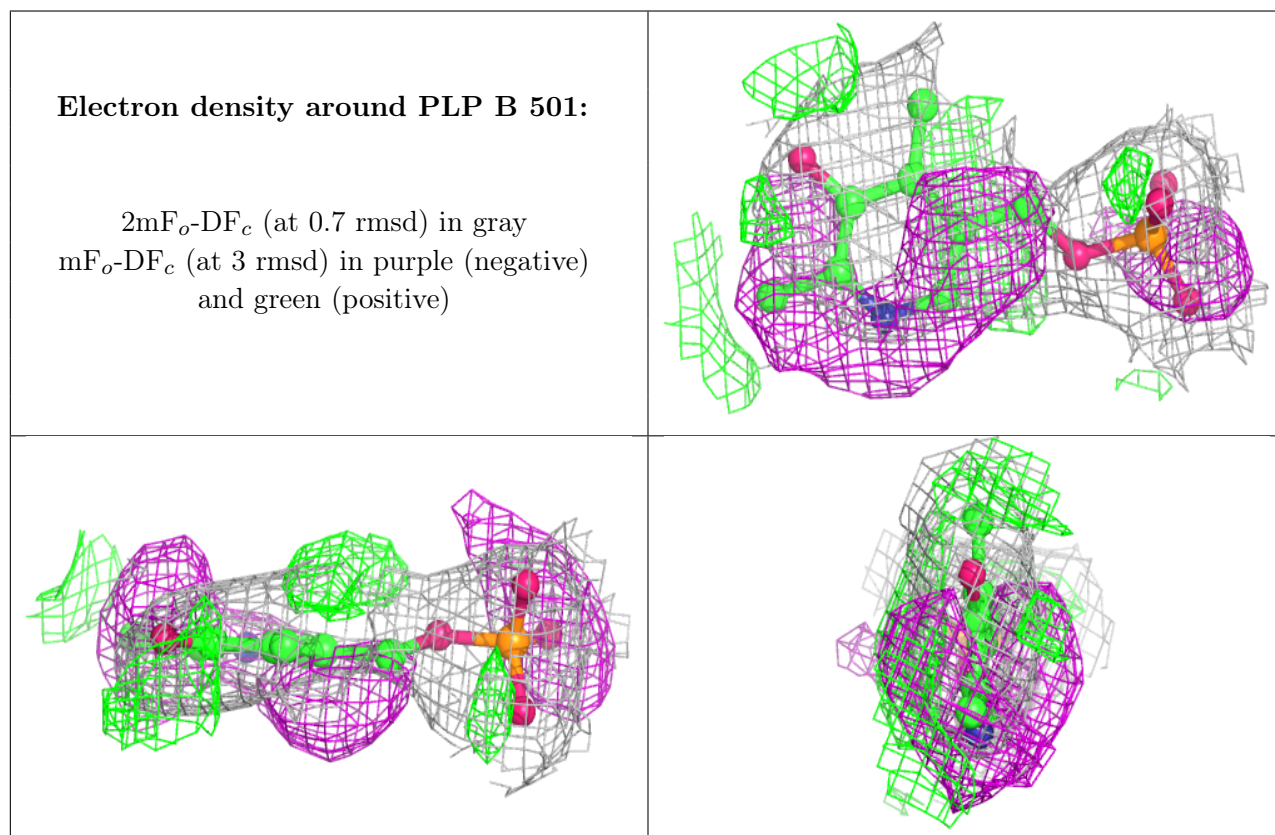
There are no monosaccharides in this entry.

6.4 Ligands [i](#)

In the following table, the Atoms column lists the number of modelled atoms in the group and the number defined in the chemical component dictionary. The B-factors column lists the minimum, median, 95th percentile and maximum values of B factors of atoms in the group. The column labelled 'Q<0.9' lists the number of atoms with occupancy less than 0.9.

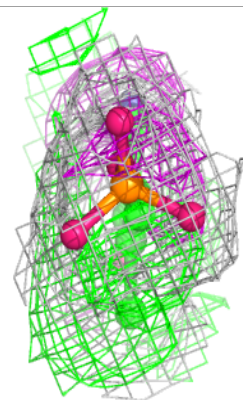
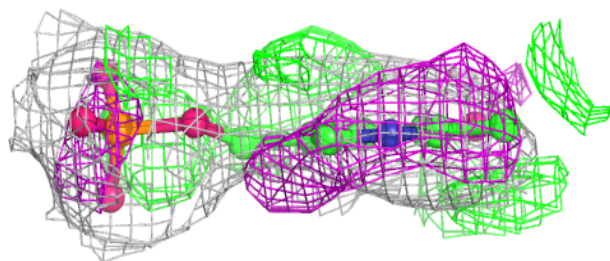
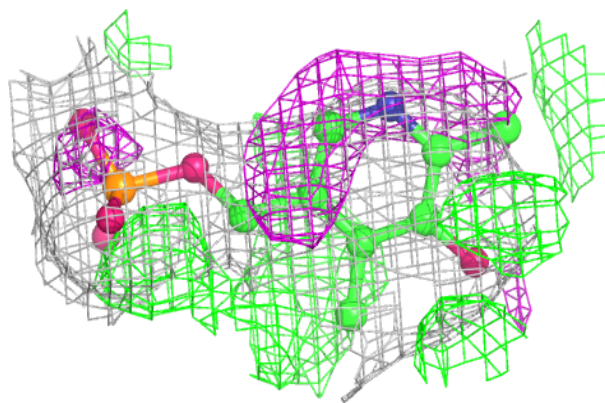
Mol	Type	Chain	Res	Atoms	RSCC	RSR	B-factors(Å ²)	Q<0.9
2	PLP	B	501	15/16	0.89	0.25	41,46,48,53	0
2	PLP	C	501	15/16	0.89	0.24	41,46,48,53	0
2	PLP	E	501	15/16	0.91	0.21	41,46,48,53	0
2	PLP	F	501	15/16	0.91	0.25	41,46,48,53	0
2	PLP	D	501	15/16	0.92	0.20	41,46,48,53	0
2	PLP	A	501	15/16	0.93	0.24	41,46,48,53	0

The following is a graphical depiction of the model fit to experimental electron density of all instances of the Ligand of Interest. In addition, ligands with molecular weight > 250 and outliers as shown on the geometry validation Tables will also be included. Each fit is shown from different orientation to approximate a three-dimensional view.

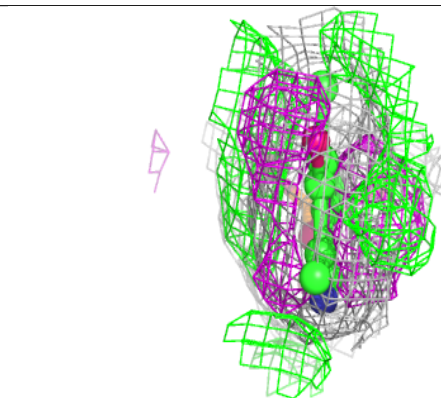
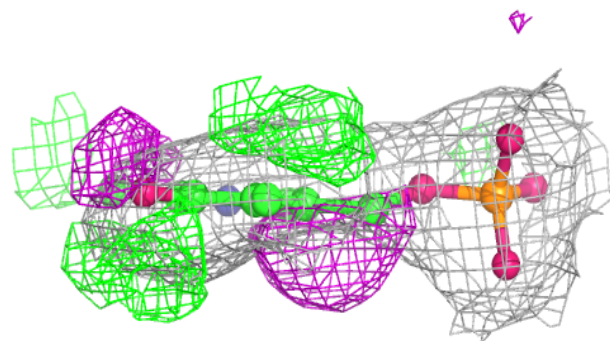
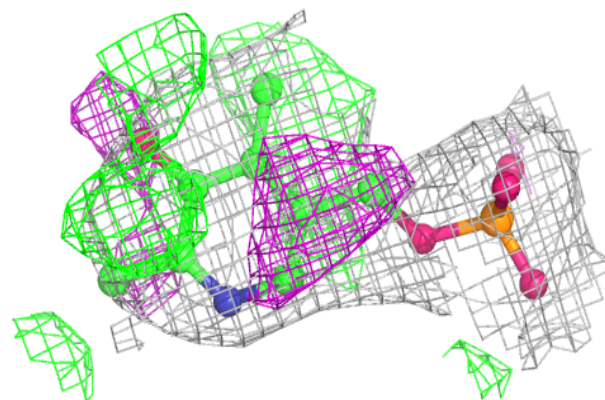


Electron density around PLP C 501:

$2mF_o-DF_c$ (at 0.7 rmsd) in gray
 mF_o-DF_c (at 3 rmsd) in purple (negative)
and green (positive)

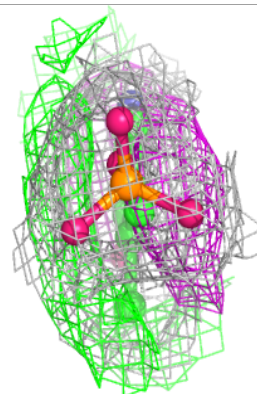
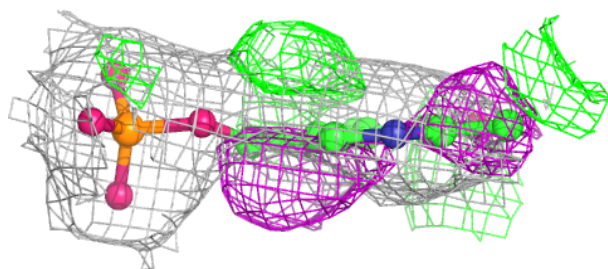
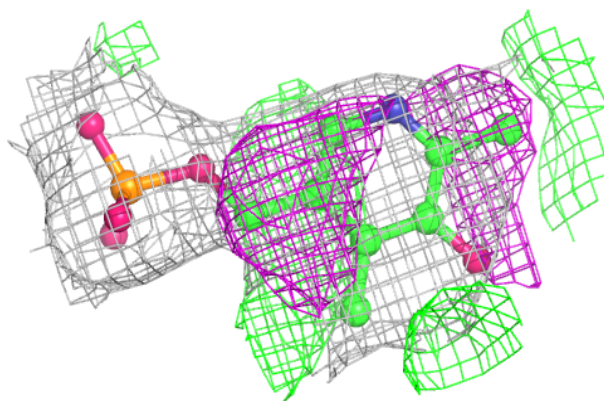
**Electron density around PLP E 501:**

$2mF_o-DF_c$ (at 0.7 rmsd) in gray
 mF_o-DF_c (at 3 rmsd) in purple (negative)
and green (positive)

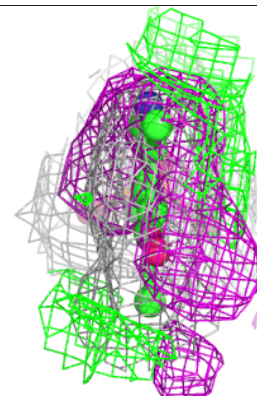
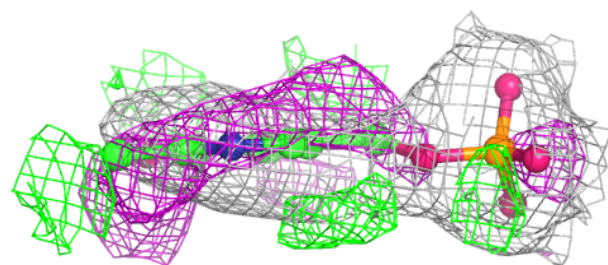
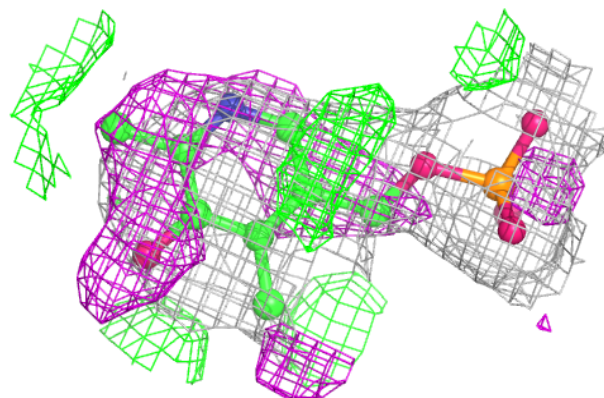


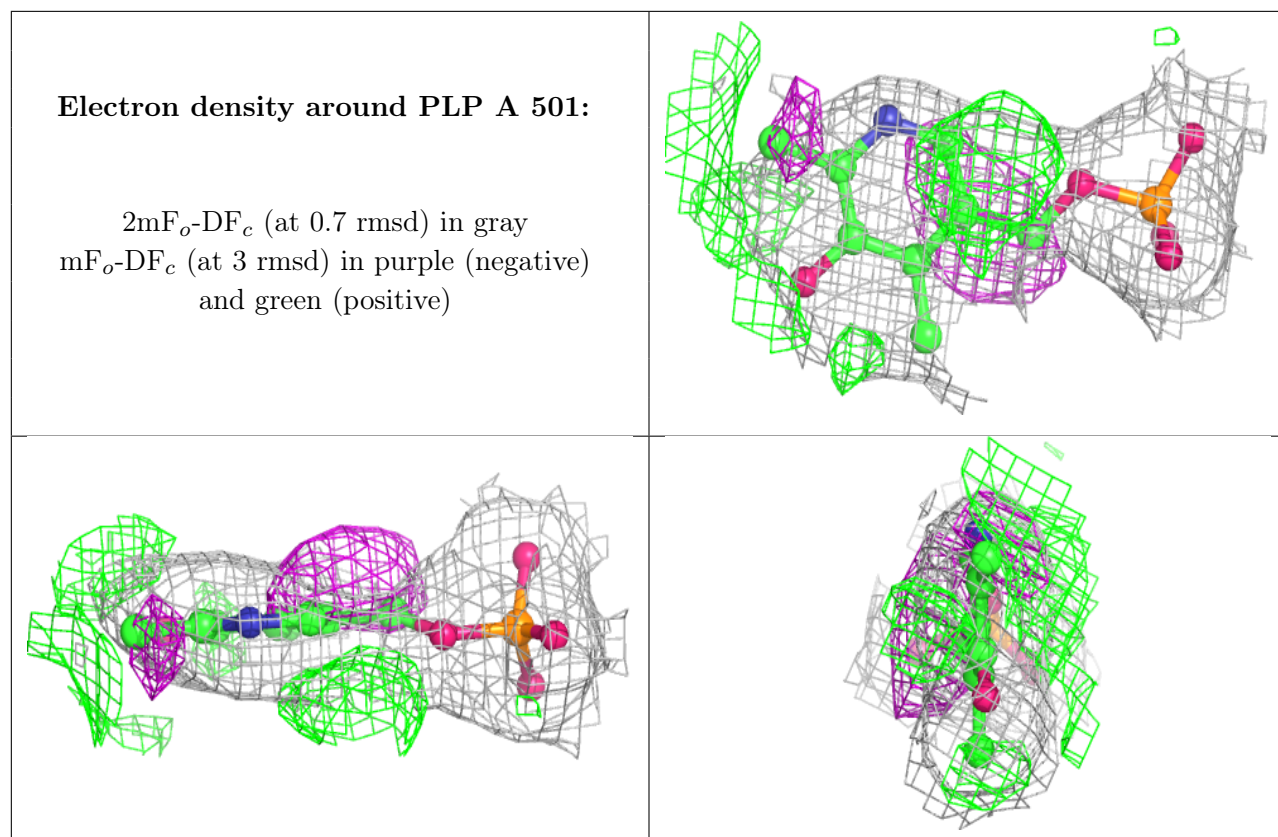
Electron density around PLP F 501:

$2mF_o-DF_c$ (at 0.7 rmsd) in gray
 mF_o-DF_c (at 3 rmsd) in purple (negative)
and green (positive)

**Electron density around PLP D 501:**

$2mF_o-DF_c$ (at 0.7 rmsd) in gray
 mF_o-DF_c (at 3 rmsd) in purple (negative)
and green (positive)





6.5 Other polymers [i](#)

There are no such residues in this entry.