



Full wwPDB X-ray Structure Validation Report ⓘ

Dec 12, 2023 – 09:11 pm GMT

PDB ID : 2X6V
Title : Crystal structure of human TBX5 in the DNA-bound and DNA-free form
Authors : Ptchelkine, D.; Stirnimann, C.U.; Grimm, C.; Mueller, C.W.
Deposited on : 2010-02-22
Resolution : 2.20 Å(reported)

This is a Full wwPDB X-ray Structure Validation Report for a publicly released PDB entry.

We welcome your comments at validation@mail.wwpdb.org

A user guide is available at

<https://www.wwpdb.org/validation/2017/XrayValidationReportHelp>

with specific help available everywhere you see the ⓘ symbol.

The types of validation reports are described at

<http://www.wwpdb.org/validation/2017/FAQs#types>.

The following versions of software and data (see [references ⓘ](#)) were used in the production of this report:

MolProbity : 4.02b-467
Mogul : 1.8.4, CSD as541be (2020)
Xtriage (Phenix) : 1.13
EDS : 2.36
buster-report : 1.1.7 (2018)
Percentile statistics : 20191225.v01 (using entries in the PDB archive December 25th 2019)
Refmac : 5.8.0158
CCP4 : 7.0.044 (Gargrove)
Ideal geometry (proteins) : Engh & Huber (2001)
Ideal geometry (DNA, RNA) : Parkinson et al. (1996)
Validation Pipeline (wwPDB-VP) : 2.36

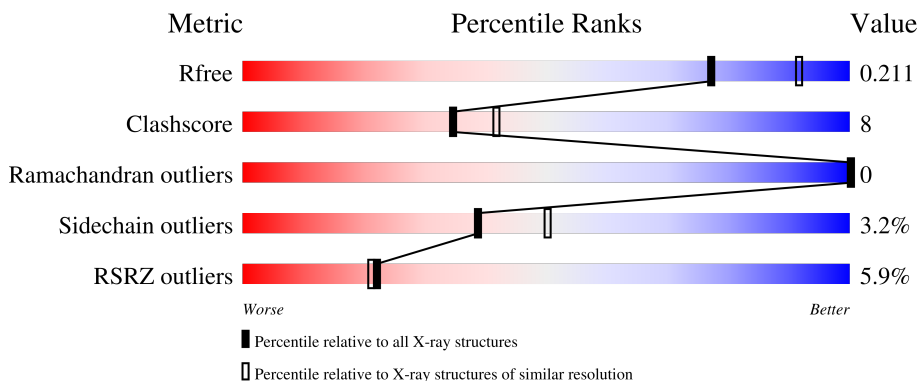
1 Overall quality at a glance

The following experimental techniques were used to determine the structure:

X-RAY DIFFRACTION

The reported resolution of this entry is 2.20 Å.

Percentile scores (ranging between 0-100) for global validation metrics of the entry are shown in the following graphic. The table shows the number of entries on which the scores are based.



Metric	Whole archive (#Entries)	Similar resolution (#Entries, resolution range(Å))
R_{free}	130704	4898 (2.20-2.20)
Clashscore	141614	5594 (2.20-2.20)
Ramachandran outliers	138981	5503 (2.20-2.20)
Sidechain outliers	138945	5504 (2.20-2.20)
RSRZ outliers	127900	4800 (2.20-2.20)

The table below summarises the geometric issues observed across the polymeric chains and their fit to the electron density. The red, orange, yellow and green segments of the lower bar indicate the fraction of residues that contain outliers for ≥ 3 , 2, 1 and 0 types of geometric quality criteria respectively. A grey segment represents the fraction of residues that are not modelled. The numeric value for each fraction is indicated below the corresponding segment, with a dot representing fractions $\leq 5\%$. The upper red bar (where present) indicates the fraction of residues that have poor fit to the electron density. The numeric value is given above the bar.

Mol	Chain	Length	Quality of chain
1	A	203	 3% 71% 14% • 13%
1	B	203	 7% 70% 13% • 15%
2	C	11	 27% 36% 36%
3	D	11	 9% 64% 36%

2 Entry composition i

There are 6 unique types of molecules in this entry. The entry contains 3759 atoms, of which 0 are hydrogens and 0 are deuteriums.

In the tables below, the ZeroOcc column contains the number of atoms modelled with zero occupancy, the AltConf column contains the number of residues with at least one atom in alternate conformation and the Trace column contains the number of residues modelled with at most 2 atoms.

- Molecule 1 is a protein called T-BOX TRANSCRIPTION FACTOR TBX5.

Mol	Chain	Residues	Atoms					ZeroOcc	AltConf	Trace
			Total	C	N	O	S			
1	A	177	1483	963	262	251	7	9	5	0
1	B	172	1454	943	259	244	8	4	5	0

- Molecule 2 is a DNA chain called 5'-D(*TP*CP*TP*CP*AP*CP*AP*CP*CP*TP*TP)-3'.

Mol	Chain	Residues	Atoms					ZeroOcc	AltConf	Trace
			Total	C	N	O	P			
2	C	11	198	95	31	62	10	0	0	1

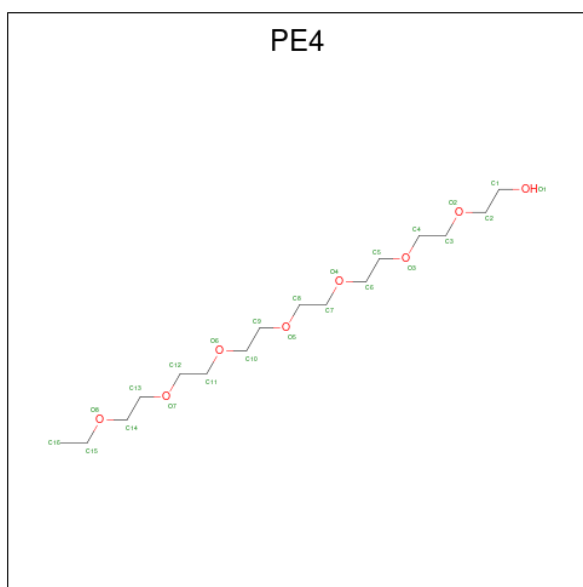
- Molecule 3 is a DNA chain called 5'-D(*TP*AP*AP*GP*GP*TP*GP*TP*GP*AP*GP)-3'.

Mol	Chain	Residues	Atoms					ZeroOcc	AltConf	Trace
			Total	C	N	O	P			
3	D	11	230	110	46	64	10	0	0	0

- Molecule 4 is MAGNESIUM ION (three-letter code: MG) (formula: Mg).

Mol	Chain	Residues	Atoms		ZeroOcc	AltConf
4	A	1	Total	Mg	0	0
			1	1		
4	B	1	Total	Mg	0	0
			1	1		

- Molecule 5 is 2-{2-[2-(2-{2-[2-(2-ETHOXY-ETHOXY)-ETHOXY]-ETHOXY}-ETHOXY)-ETHOXY]-ETHOXY}-ETHANOL (three-letter code: PE4) (formula: C₁₆H₃₄O₈).



Mol	Chain	Residues	Atoms		ZeroOcc	AltConf
5	B	1	Total	C O	0	0
			24	16 8		

- Molecule 6 is water.

Mol	Chain	Residues	Atoms		ZeroOcc	AltConf
6	A	165	Total	O	0	0
			165	165		
6	B	120	Total	O	0	0
			120	120		
6	C	45	Total	O	0	0
			45	45		
6	D	38	Total	O	0	0
			38	38		

4 Data and refinement statistics

Property	Value	Source
Space group	P 61 2 2	Depositor
Cell constants a, b, c, α , β , γ	118.24Å 118.24Å 243.00Å 90.00° 90.00° 120.00°	Depositor
Resolution (Å)	19.71 – 2.20 19.71 – 2.20	Depositor EDS
% Data completeness (in resolution range)	98.9 (19.71-2.20) 98.9 (19.71-2.20)	Depositor EDS
R_{merge}	0.07	Depositor
R_{sym}	(Not available)	Depositor
$\langle I/\sigma(I) \rangle$ ¹	1.91 (at 2.19Å)	Xtrriage
Refinement program	PHENIX (PHENIX.REFINE)	Depositor
R, R_{free}	0.197 , 0.225 0.183 , 0.211	Depositor DCC
R_{free} test set	2553 reflections (5.00%)	wwPDB-VP
Wilson B-factor (Å ²)	46.1	Xtrriage
Anisotropy	0.100	Xtrriage
Bulk solvent k_{sol} (e/Å ³), B_{sol} (Å ²)	0.37 , 54.6	EDS
L-test for twinning ²	$\langle L \rangle = 0.47$, $\langle L^2 \rangle = 0.30$	Xtrriage
Estimated twinning fraction	No twinning to report.	Xtrriage
F_o, F_c correlation	0.96	EDS
Total number of atoms	3759	wwPDB-VP
Average B, all atoms (Å ²)	48.0	wwPDB-VP

Xtrriage's analysis on translational NCS is as follows: *The largest off-origin peak in the Patterson function is 4.19% of the height of the origin peak. No significant pseudotranslation is detected.*

¹Intensities estimated from amplitudes.

²Theoretical values of $\langle |L| \rangle$, $\langle L^2 \rangle$ for acentric reflections are 0.5, 0.333 respectively for untwinned datasets, and 0.375, 0.2 for perfectly twinned datasets.

5 Model quality [i](#)

5.1 Standard geometry [i](#)

Bond lengths and bond angles in the following residue types are not validated in this section: MG, PE4

The Z score for a bond length (or angle) is the number of standard deviations the observed value is removed from the expected value. A bond length (or angle) with $|Z| > 5$ is considered an outlier worth inspection. RMSZ is the root-mean-square of all Z scores of the bond lengths (or angles).

Mol	Chain	Bond lengths		Bond angles	
		RMSZ	# Z >5	RMSZ	# Z >5
1	A	0.46	0/1526	0.58	0/2062
1	B	0.41	0/1496	0.56	0/2021
2	C	0.85	0/219	1.87	9/335 (2.7%)
3	D	0.92	0/259	1.48	1/400 (0.2%)
All	All	0.52	0/3500	0.84	10/4818 (0.2%)

There are no bond length outliers.

All (10) bond angle outliers are listed below:

Mol	Chain	Res	Type	Atoms	Z	Observed(°)	Ideal(°)
2	C	4	DC	O4'-C1'-N1	-8.66	101.94	108.00
2	C	5	DA	O4'-C1'-N9	-8.42	102.11	108.00
2	C	9	DC	O4'-C4'-C3'	-7.51	101.50	106.00
2	C	7	DA	O4'-C1'-N9	-7.37	102.84	108.00
3	D	19	DT	O4'-C1'-N1	-7.16	102.99	108.00
2	C	10	DT	O4'-C1'-N1	-6.97	103.12	108.00
2	C	3	DT	O4'-C1'-N1	-6.93	103.15	108.00
2	C	2	DC	O4'-C1'-N1	-6.74	103.28	108.00
2	C	9	DC	C1'-O4'-C4'	-6.15	103.95	110.10
2	C	11	DT	C4-C5-C7	5.50	122.30	119.00

There are no chirality outliers.

There are no planarity outliers.

5.2 Too-close contacts [i](#)

In the following table, the Non-H and H(model) columns list the number of non-hydrogen atoms and hydrogen atoms in the chain respectively. The H(added) column lists the number of hydrogen

atoms added and optimized by MolProbity. The Clashes column lists the number of clashes within the asymmetric unit, whereas Symm-Clashes lists symmetry-related clashes.

Mol	Chain	Non-H	H(model)	H(added)	Clashes	Symm-Clashes
1	A	1483	0	1492	26	0
1	B	1454	0	1468	26	0
2	C	198	0	114	5	0
3	D	230	0	126	2	0
4	A	1	0	0	0	0
4	B	1	0	0	0	0
5	B	24	0	34	7	0
6	A	165	0	0	5	0
6	B	120	0	0	6	0
6	C	45	0	0	0	0
6	D	38	0	0	1	0
All	All	3759	0	3234	55	0

The all-atom clashscore is defined as the number of clashes found per 1000 atoms (including hydrogen atoms). The all-atom clashscore for this structure is 8.

All (55) close contacts within the same asymmetric unit are listed below, sorted by their clash magnitude.

Atom-1	Atom-2	Interatomic distance (Å)	Clash overlap (Å)
1:A:128:GLU:H	1:A:177:HIS:HE1	1.16	0.93
1:A:53:GLY:HA3	1:A:93:GLY:HA3	1.65	0.77
1:A:128:GLU:HG2	6:A:2054:HOH:O	1.84	0.75
1:A:187:LYS:HE3	1:A:188:ALA:O	1.88	0.74
1:A:95:ASN:HB2	6:A:2051:HOH:O	1.89	0.72
1:B:182[A]:ARG:NH2	5:B:1234:PE4:H62	2.05	0.71
1:B:176:MET:HE3	6:B:2104:HOH:O	1.91	0.71
1:A:105:ASP:OD1	1:A:182:ARG:HD3	1.93	0.69
1:A:76:ILE:HD12	1:A:162:ASN:HB3	1.74	0.68
1:B:105:ASP:OD1	1:B:182[A]:ARG:HD3	1.94	0.67
1:A:215:THR:HG22	6:A:2145:HOH:O	1.96	0.66
1:B:62:GLU:H	1:B:62:GLU:CD	2.02	0.63
1:B:170:HIS:HD2	6:B:2093:HOH:O	1.83	0.59
1:A:205:VAL:O	1:B:199:THR:HB	2.03	0.58
1:B:76:ILE:HG13	1:B:162:ASN:HB3	1.85	0.58
1:B:182[A]:ARG:HH22	5:B:1234:PE4:C6	2.16	0.57
1:A:62[A]:GLU:H	1:A:62[A]:GLU:CD	2.08	0.57
1:A:187:LYS:HG2	1:A:188:ALA:H	1.73	0.54
1:A:151:GLN:HB2	6:A:2107:HOH:O	2.08	0.53
1:A:128:GLU:H	1:A:177:HIS:CE1	2.09	0.53

Continued on next page...

Continued from previous page...

Atom-1	Atom-2	Interatomic distance (Å)	Clash overlap (Å)
2:C:4:DC:H2''	2:C:5:DA:C8	2.44	0.53
1:B:62:GLU:HG2	6:B:2010:HOH:O	2.10	0.51
1:A:175:SER:O	1:A:177:HIS:HD2	1.93	0.51
3:D:22:DG:OP2	6:D:2035:HOH:O	2.20	0.50
1:B:231:PRO:O	1:B:232:PHE:HB2	2.10	0.50
3:D:17:DT:H2'	3:D:18:DG:C8	2.47	0.49
1:A:235:GLY:CA	2:C:9:DC:H5'	2.44	0.48
1:B:99[B]:LYS:NZ	6:B:2037:HOH:O	2.47	0.48
1:A:53:GLY:CA	1:A:93:GLY:HA3	2.39	0.48
1:B:182[B]:ARG:NH1	5:B:1234:PE4:H71	2.29	0.47
1:B:182[A]:ARG:HH2	5:B:1234:PE4:H61	1.79	0.47
1:B:182[A]:ARG:NH2	5:B:1234:PE4:C6	2.72	0.47
1:B:182[B]:ARG:HH12	5:B:1234:PE4:H71	1.80	0.47
1:A:84:PHE:HA	1:A:85:PRO:C	2.36	0.46
1:B:113:ARG:HG2	1:B:124:THR:HG22	1.99	0.45
1:A:234:LYS:HD2	2:C:9:DC:H5''	1.99	0.45
1:B:215:THR:HB	6:B:2104:HOH:O	2.16	0.45
1:A:76:ILE:CD1	1:A:162:ASN:HB3	2.44	0.44
1:B:128:GLU:HG3	1:B:129:PRO:HD2	2.00	0.44
2:C:9:DC:H2''	2:C:10:DT:H5'	1.99	0.44
1:B:223:THR:O	1:B:227:ILE:HG13	2.18	0.44
1:B:182[B]:ARG:HH12	5:B:1234:PE4:H62	1.82	0.44
1:A:67:PHE:CE1	1:A:225:LEU:HB3	2.53	0.43
1:A:166:ASP:HA	1:A:167:PRO:HD3	1.75	0.43
1:A:158:LEU:HD23	1:A:158:LEU:C	2.39	0.42
1:A:235:GLY:HA2	2:C:9:DC:H5'	2.01	0.42
1:B:219:ASN:OD1	1:B:221:LYS:HB2	2.20	0.42
1:A:164:HIS:HE1	6:A:2080:HOH:O	2.02	0.42
1:B:83[B]:MET:HG2	1:B:160:LEU:HD11	2.02	0.42
1:A:116:PHE:CZ	1:A:119:ASN:HA	2.55	0.41
1:B:52:GLU:HA	1:B:54:ILE:HD12	2.03	0.41
1:B:82:ARG:NH2	6:B:2020:HOH:O	2.46	0.41
1:A:100:TYR:CE2	1:A:187:LYS:HG3	2.56	0.40
1:B:166:ASP:HA	1:B:167:PRO:HD3	1.74	0.40
1:B:230:ASN:O	1:B:230:ASN:CG	2.59	0.40

There are no symmetry-related clashes.

5.3 Torsion angles [i](#)

5.3.1 Protein backbone [i](#)

In the following table, the Percentiles column shows the percent Ramachandran outliers of the chain as a percentile score with respect to all X-ray entries followed by that with respect to entries of similar resolution.

The Analysed column shows the number of residues for which the backbone conformation was analysed, and the total number of residues.

Mol	Chain	Analysed	Favoured	Allowed	Outliers	Percentiles	
1	A	178/203 (88%)	174 (98%)	4 (2%)	0	100	100
1	B	173/203 (85%)	170 (98%)	3 (2%)	0	100	100
All	All	351/406 (86%)	344 (98%)	7 (2%)	0	100	100

There are no Ramachandran outliers to report.

5.3.2 Protein sidechains [i](#)

In the following table, the Percentiles column shows the percent sidechain outliers of the chain as a percentile score with respect to all X-ray entries followed by that with respect to entries of similar resolution.

The Analysed column shows the number of residues for which the sidechain conformation was analysed, and the total number of residues.

Mol	Chain	Analysed	Rotameric	Outliers	Percentiles	
1	A	160/177 (90%)	154 (96%)	6 (4%)	33	42
1	B	158/177 (89%)	154 (98%)	4 (2%)	47	60
All	All	318/354 (90%)	308 (97%)	10 (3%)	39	51

All (10) residues with a non-rotameric sidechain are listed below:

Mol	Chain	Res	Type
1	A	55	LYS
1	A	119	ASN
1	A	124	THR
1	A	199	THR
1	A	215	THR
1	A	225	LEU
1	B	124	THR
1	B	215	THR

Continued on next page...

Continued from previous page...

Mol	Chain	Res	Type
1	B	226	LYS
1	B	232	PHE

Sometimes sidechains can be flipped to improve hydrogen bonding and reduce clashes. All (6) such sidechains are listed below:

Mol	Chain	Res	Type
1	A	59	HIS
1	A	119	ASN
1	A	177	HIS
1	A	204	HIS
1	B	220	HIS
1	B	229	ASN

5.3.3 RNA [i](#)

There are no RNA molecules in this entry.

5.4 Non-standard residues in protein, DNA, RNA chains [i](#)

There are no non-standard protein/DNA/RNA residues in this entry.

5.5 Carbohydrates [i](#)

There are no monosaccharides in this entry.

5.6 Ligand geometry [i](#)

Of 3 ligands modelled in this entry, 2 are monoatomic - leaving 1 for Mogul analysis.

In the following table, the Counts columns list the number of bonds (or angles) for which Mogul statistics could be retrieved, the number of bonds (or angles) that are observed in the model and the number of bonds (or angles) that are defined in the Chemical Component Dictionary. The Link column lists molecule types, if any, to which the group is linked. The Z score for a bond length (or angle) is the number of standard deviations the observed value is removed from the expected value. A bond length (or angle) with $|Z| > 2$ is considered an outlier worth inspection. RMSZ is the root-mean-square of all Z scores of the bond lengths (or angles).

Mol	Type	Chain	Res	Link	Bond lengths			Bond angles		
					Counts	RMSZ	$\# Z > 2$	Counts	RMSZ	$\# Z > 2$
5	PE4	B	1234	-	23,23,23	0.59	0	22,22,22	0.97	1 (4%)

In the following table, the Chirals column lists the number of chiral outliers, the number of chiral centers analysed, the number of these observed in the model and the number defined in the Chemical Component Dictionary. Similar counts are reported in the Torsion and Rings columns. '-' means no outliers of that kind were identified.

Mol	Type	Chain	Res	Link	Chirals	Torsions	Rings
5	PE4	B	1234	-	-	11/21/21/21	-

There are no bond length outliers.

All (1) bond angle outliers are listed below:

Mol	Chain	Res	Type	Atoms	Z	Observed(°)	Ideal(°)
5	B	1234	PE4	C15-O8-C14	2.28	121.08	112.90

There are no chirality outliers.

All (11) torsion outliers are listed below:

Mol	Chain	Res	Type	Atoms
5	B	1234	PE4	C1-C2-O2-C3
5	B	1234	PE4	O4-C7-C8-O5
5	B	1234	PE4	O2-C3-C4-O3
5	B	1234	PE4	O3-C5-C6-O4
5	B	1234	PE4	O7-C13-C14-O8
5	B	1234	PE4	O1-C1-C2-O2
5	B	1234	PE4	O6-C11-C12-O7
5	B	1234	PE4	C8-C7-O4-C6
5	B	1234	PE4	C16-C15-O8-C14
5	B	1234	PE4	C3-C4-O3-C5
5	B	1234	PE4	C6-C5-O3-C4

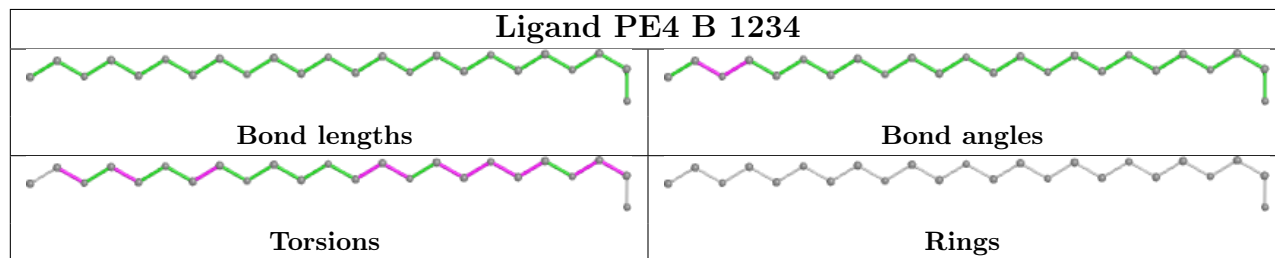
There are no ring outliers.

1 monomer is involved in 7 short contacts:

Mol	Chain	Res	Type	Clashes	Symm-Clashes
5	B	1234	PE4	7	0

The following is a two-dimensional graphical depiction of Mogul quality analysis of bond lengths, bond angles, torsion angles, and ring geometry for all instances of the Ligand of Interest. In addition, ligands with molecular weight > 250 and outliers as shown on the validation Tables will also be included. For torsion angles, if less than 5% of the Mogul distribution of torsion angles is within 10 degrees of the torsion angle in question, then that torsion angle is considered an outlier. Any bond that is central to one or more torsion angles identified as an outlier by Mogul will be highlighted in the graph. For rings, the root-mean-square deviation (RMSD) between the ring

in question and similar rings identified by Mogul is calculated over all ring torsion angles. If the average RMSD is greater than 60 degrees and the minimal RMSD between the ring in question and any Mogul-identified rings is also greater than 60 degrees, then that ring is considered an outlier. The outliers are highlighted in purple. The color gray indicates Mogul did not find sufficient equivalents in the CSD to analyse the geometry.



5.7 Other polymers [i](#)

There are no such residues in this entry.

5.8 Polymer linkage issues [i](#)

There are no chain breaks in this entry.

6 Fit of model and data [i](#)

6.1 Protein, DNA and RNA chains [i](#)

In the following table, the column labelled ‘#RSRZ > 2’ contains the number (and percentage) of RSRZ outliers, followed by percent RSRZ outliers for the chain as percentile scores relative to all X-ray entries and entries of similar resolution. The OWAB column contains the minimum, median, 95th percentile and maximum values of the occupancy-weighted average B-factor per residue. The column labelled ‘Q < 0.9’ lists the number of (and percentage) of residues with an average occupancy less than 0.9.

Mol	Chain	Analysed	<RSRZ>	#RSRZ>2	OWAB(Å ²)	Q<0.9
1	A	177/203 (87%)	-0.04	7 (3%) 38 36	30, 41, 66, 105	4 (2%)
1	B	172/203 (84%)	0.22	14 (8%) 12 10	33, 49, 81, 102	2 (1%)
2	C	11/11 (100%)	-0.86	0 100 100	38, 44, 57, 59	0
3	D	11/11 (100%)	0.26	1 (9%) 9 8	34, 45, 78, 87	0
All	All	371/428 (86%)	0.06	22 (5%) 22 21	30, 44, 78, 105	6 (1%)

All (22) RSRZ outliers are listed below:

Mol	Chain	Res	Type	RSRZ
1	B	232	PHE	6.7
1	A	188	ALA	5.6
1	A	189	ASP	5.2
1	B	189	ASP	4.7
1	A	238	GLY	4.1
1	B	118	ASP	4.0
3	D	12	DT	3.7
1	B	102	LEU	3.2
1	A	102	LEU	3.1
1	B	119	ASN	3.0
1	B	188	ALA	3.0
1	B	224	GLN	3.0
1	B	231	PRO	2.9
1	B	117	ALA	2.6
1	B	120	LYS	2.5
1	A	185	ILE	2.4
1	B	211	PHE	2.3
1	B	150	ARG	2.2
1	A	53	GLY	2.1
1	A	91[A]	VAL	2.1
1	B	126	LYS	2.0
1	B	111	ASP	2.0

6.2 Non-standard residues in protein, DNA, RNA chains [i](#)

There are no non-standard protein/DNA/RNA residues in this entry.

6.3 Carbohydrates [i](#)

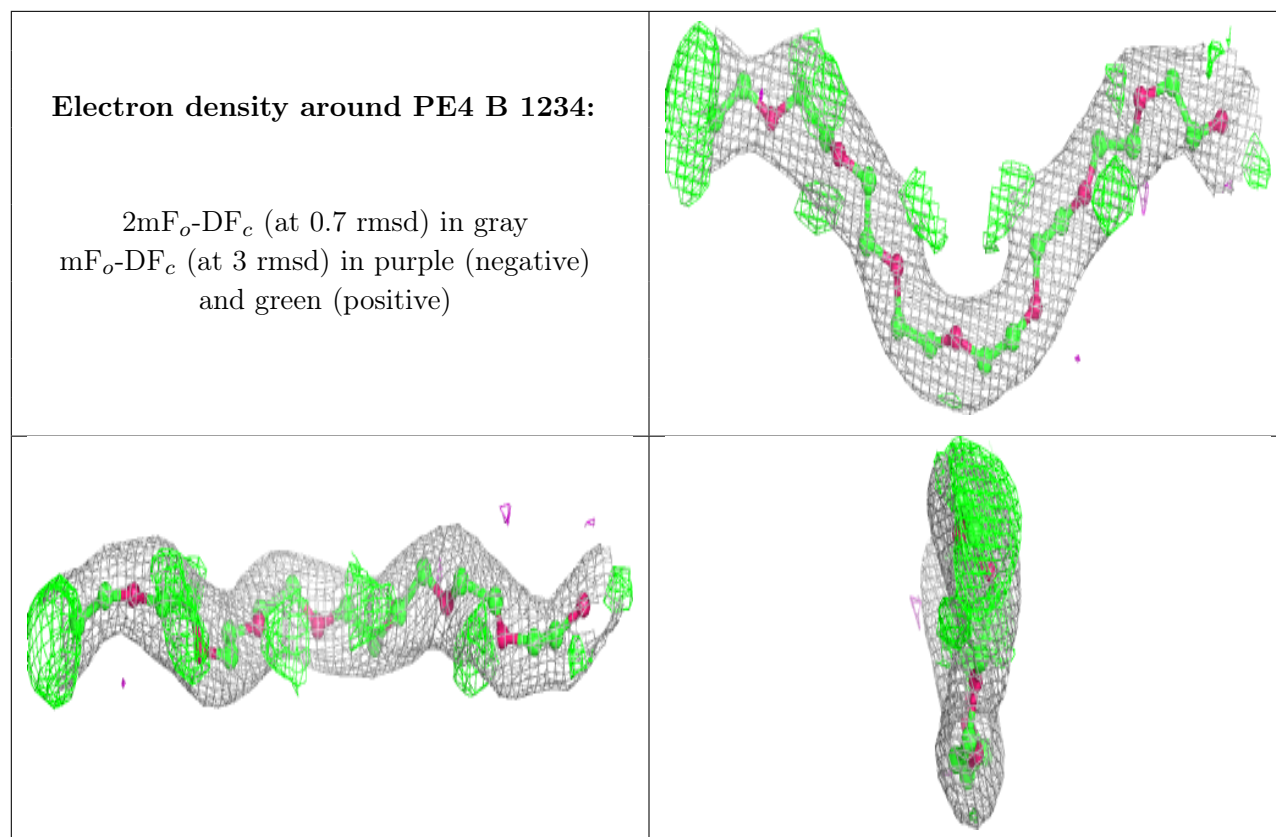
There are no monosaccharides in this entry.

6.4 Ligands [i](#)

In the following table, the Atoms column lists the number of modelled atoms in the group and the number defined in the chemical component dictionary. The B-factors column lists the minimum, median, 95th percentile and maximum values of B factors of atoms in the group. The column labelled 'Q < 0.9' lists the number of atoms with occupancy less than 0.9.

Mol	Type	Chain	Res	Atoms	RSCC	RSR	B-factors(\AA^2)	Q<0.9
4	MG	B	1233	1/1	0.87	0.30	72,72,72,72	0
5	PE4	B	1234	24/24	0.88	0.13	36,56,82,83	0
4	MG	A	1239	1/1	0.96	0.10	61,61,61,61	0

The following is a graphical depiction of the model fit to experimental electron density of all instances of the Ligand of Interest. In addition, ligands with molecular weight > 250 and outliers as shown on the geometry validation Tables will also be included. Each fit is shown from different orientation to approximate a three-dimensional view.



6.5 Other polymers [i](#)

There are no such residues in this entry.