



Full wwPDB X-ray Structure Validation Report ⓘ

May 22, 2020 – 06:06 pm BST

PDB ID : 2X9V
Title : High resolution structure of TbPTR1 with trimetrexate
Authors : Dawson, A.; Tulloch, L.B.; Barrack, K.L.; Hunter, W.N.
Deposited on : 2010-03-24
Resolution : 1.30 Å(reported)

This is a Full wwPDB X-ray Structure Validation Report for a publicly released PDB entry.

We welcome your comments at validation@mail.wwpdb.org

A user guide is available at

<https://www.wwpdb.org/validation/2017/XrayValidationReportHelp>

with specific help available everywhere you see the ⓘ symbol.

The following versions of software and data (see [references ⓘ](#)) were used in the production of this report:

MolProbity : 4.02b-467
Mogul : 1.8.5 (274361), CSD as541be (2020)
Xtriage (Phenix) : 1.13
EDS : 2.11
buster-report : 1.1.7 (2018)
Percentile statistics : 20191225.v01 (using entries in the PDB archive December 25th 2019)
Refmac : 5.8.0158
CCP4 : 7.0.044 (Gargrove)
Ideal geometry (proteins) : Engh & Huber (2001)
Ideal geometry (DNA, RNA) : Parkinson et al. (1996)
Validation Pipeline (wwPDB-VP) : 2.11

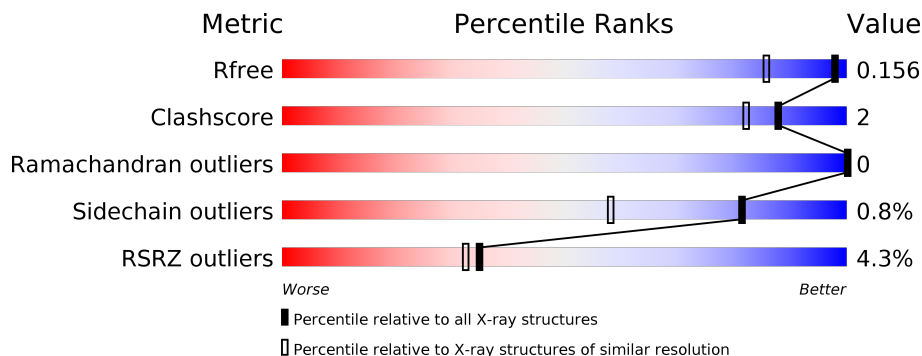
1 Overall quality at a glance i

The following experimental techniques were used to determine the structure:

X-RAY DIFFRACTION

The reported resolution of this entry is 1.30 Å.

Percentile scores (ranging between 0-100) for global validation metrics of the entry are shown in the following graphic. The table shows the number of entries on which the scores are based.



Metric	Whole archive (#Entries)	Similar resolution (#Entries, resolution range(Å))
R_{free}	130704	1058 (1.30-1.30)
Clashscore	141614	1101 (1.30-1.30)
Ramachandran outliers	138981	1058 (1.30-1.30)
Sidechain outliers	138945	1058 (1.30-1.30)
RSRZ outliers	127900	1029 (1.30-1.30)

The table below summarises the geometric issues observed across the polymeric chains and their fit to the electron density. The red, orange, yellow and green segments on the lower bar indicate the fraction of residues that contain outliers for ≥ 3 , 2, 1 and 0 types of geometric quality criteria respectively. A grey segment represents the fraction of residues that are not modelled. The numeric value for each fraction is indicated below the corresponding segment, with a dot representing fractions $\leq 5\%$. The upper red bar (where present) indicates the fraction of residues that have poor fit to the electron density. The numeric value is given above the bar.

Mol	Chain	Length	Quality of chain
1	A	288	<div style="display: flex; align-items: center;"> <div style="width: 3%; height: 10px; background-color: red; margin-right: 2px;"></div> <div style="width: 83%; height: 10px; background-color: green; margin-right: 2px;"></div> <div style="width: 5%; height: 10px; background-color: yellow; margin-right: 2px;"></div> <div style="width: 13%; height: 10px; background-color: grey;"></div> </div> <p style="margin-left: 10px;">3% 83% • 13%</p>
1	B	288	<div style="display: flex; align-items: center;"> <div style="width: 2%; height: 10px; background-color: red; margin-right: 2px;"></div> <div style="width: 84%; height: 10px; background-color: green; margin-right: 2px;"></div> <div style="width: 5%; height: 10px; background-color: yellow; margin-right: 2px;"></div> <div style="width: 13%; height: 10px; background-color: grey;"></div> </div> <p style="margin-left: 10px;">2% 84% • 13%</p>
1	C	288	<div style="display: flex; align-items: center;"> <div style="width: 4%; height: 10px; background-color: red; margin-right: 2px;"></div> <div style="width: 82%; height: 10px; background-color: green; margin-right: 2px;"></div> <div style="width: 5%; height: 10px; background-color: yellow; margin-right: 2px;"></div> <div style="width: 14%; height: 10px; background-color: grey;"></div> </div> <p style="margin-left: 10px;">4% 82% 5% 14%</p>
1	D	288	<div style="display: flex; align-items: center;"> <div style="width: 6%; height: 10px; background-color: red; margin-right: 2px;"></div> <div style="width: 84%; height: 10px; background-color: green; margin-right: 2px;"></div> <div style="width: 5%; height: 10px; background-color: yellow; margin-right: 2px;"></div> <div style="width: 13%; height: 10px; background-color: grey;"></div> </div> <p style="margin-left: 10px;">6% 84% • 13%</p>

2 Entry composition i

There are 5 unique types of molecules in this entry. The entry contains 9148 atoms, of which 0 are hydrogens and 0 are deuteriums.

In the tables below, the ZeroOcc column contains the number of atoms modelled with zero occupancy, the AltConf column contains the number of residues with at least one atom in alternate conformation and the Trace column contains the number of residues modelled with at most 2 atoms.

- Molecule 1 is a protein called PTERIDINE REDUCTASE.

Mol	Chain	Residues	Atoms					ZeroOcc	AltConf	Trace
			Total	C	N	O	S			
1	A	250	Total 1910	C 1205	N 337	O 357	S 11	0	11	0
1	B	251	Total 1906	C 1200	N 333	O 361	S 12	0	13	0
1	C	249	Total 1897	C 1194	N 330	O 361	S 12	0	11	0
1	D	250	Total 1909	C 1202	N 331	O 364	S 12	0	13	0

There are 80 discrepancies between the modelled and reference sequences:

Chain	Residue	Modelled	Actual	Comment	Reference
A	-19	MET	-	expression tag	UNP O76290
A	-18	GLY	-	expression tag	UNP O76290
A	-17	SER	-	expression tag	UNP O76290
A	-16	SER	-	expression tag	UNP O76290
A	-15	HIS	-	expression tag	UNP O76290
A	-14	HIS	-	expression tag	UNP O76290
A	-13	HIS	-	expression tag	UNP O76290
A	-12	HIS	-	expression tag	UNP O76290
A	-11	HIS	-	expression tag	UNP O76290
A	-10	HIS	-	expression tag	UNP O76290
A	-9	SER	-	expression tag	UNP O76290
A	-8	SER	-	expression tag	UNP O76290
A	-7	GLY	-	expression tag	UNP O76290
A	-6	LEU	-	expression tag	UNP O76290
A	-5	VAL	-	expression tag	UNP O76290
A	-4	PRO	-	expression tag	UNP O76290
A	-3	ARG	-	expression tag	UNP O76290
A	-2	GLY	-	expression tag	UNP O76290
A	-1	SER	-	expression tag	UNP O76290
A	0	HIS	-	expression tag	UNP O76290
B	-19	MET	-	expression tag	UNP O76290

Continued on next page...

Continued from previous page...

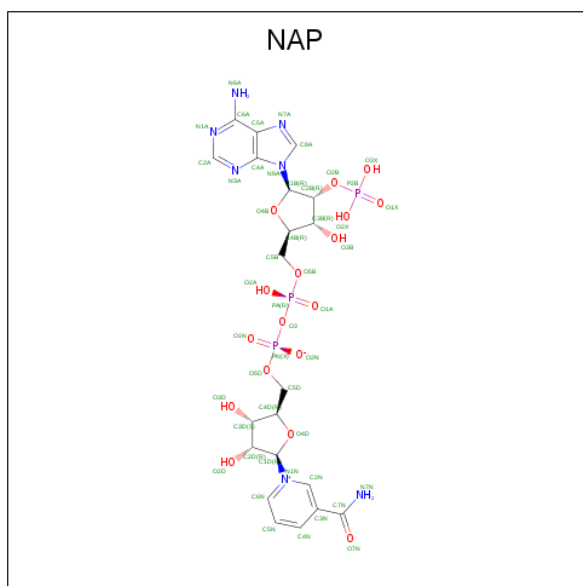
Chain	Residue	Modelled	Actual	Comment	Reference
B	-18	GLY	-	expression tag	UNP O76290
B	-17	SER	-	expression tag	UNP O76290
B	-16	SER	-	expression tag	UNP O76290
B	-15	HIS	-	expression tag	UNP O76290
B	-14	HIS	-	expression tag	UNP O76290
B	-13	HIS	-	expression tag	UNP O76290
B	-12	HIS	-	expression tag	UNP O76290
B	-11	HIS	-	expression tag	UNP O76290
B	-10	HIS	-	expression tag	UNP O76290
B	-9	SER	-	expression tag	UNP O76290
B	-8	SER	-	expression tag	UNP O76290
B	-7	GLY	-	expression tag	UNP O76290
B	-6	LEU	-	expression tag	UNP O76290
B	-5	VAL	-	expression tag	UNP O76290
B	-4	PRO	-	expression tag	UNP O76290
B	-3	ARG	-	expression tag	UNP O76290
B	-2	GLY	-	expression tag	UNP O76290
B	-1	SER	-	expression tag	UNP O76290
B	0	HIS	-	expression tag	UNP O76290
C	-19	MET	-	expression tag	UNP O76290
C	-18	GLY	-	expression tag	UNP O76290
C	-17	SER	-	expression tag	UNP O76290
C	-16	SER	-	expression tag	UNP O76290
C	-15	HIS	-	expression tag	UNP O76290
C	-14	HIS	-	expression tag	UNP O76290
C	-13	HIS	-	expression tag	UNP O76290
C	-12	HIS	-	expression tag	UNP O76290
C	-11	HIS	-	expression tag	UNP O76290
C	-10	HIS	-	expression tag	UNP O76290
C	-9	SER	-	expression tag	UNP O76290
C	-8	SER	-	expression tag	UNP O76290
C	-7	GLY	-	expression tag	UNP O76290
C	-6	LEU	-	expression tag	UNP O76290
C	-5	VAL	-	expression tag	UNP O76290
C	-4	PRO	-	expression tag	UNP O76290
C	-3	ARG	-	expression tag	UNP O76290
C	-2	GLY	-	expression tag	UNP O76290
C	-1	SER	-	expression tag	UNP O76290
C	0	HIS	-	expression tag	UNP O76290
D	-19	MET	-	expression tag	UNP O76290
D	-18	GLY	-	expression tag	UNP O76290
D	-17	SER	-	expression tag	UNP O76290

Continued on next page...

Continued from previous page...

Chain	Residue	Modelled	Actual	Comment	Reference
D	-16	SER	-	expression tag	UNP O76290
D	-15	HIS	-	expression tag	UNP O76290
D	-14	HIS	-	expression tag	UNP O76290
D	-13	HIS	-	expression tag	UNP O76290
D	-12	HIS	-	expression tag	UNP O76290
D	-11	HIS	-	expression tag	UNP O76290
D	-10	HIS	-	expression tag	UNP O76290
D	-9	SER	-	expression tag	UNP O76290
D	-8	SER	-	expression tag	UNP O76290
D	-7	GLY	-	expression tag	UNP O76290
D	-6	LEU	-	expression tag	UNP O76290
D	-5	VAL	-	expression tag	UNP O76290
D	-4	PRO	-	expression tag	UNP O76290
D	-3	ARG	-	expression tag	UNP O76290
D	-2	GLY	-	expression tag	UNP O76290
D	-1	SER	-	expression tag	UNP O76290
D	0	HIS	-	expression tag	UNP O76290

- Molecule 2 is NADP NICOTINAMIDE-ADENINE-DINUCLEOTIDE PHOSPHATE (three-letter code: NAP) (formula: C₂₁H₂₈N₇O₁₇P₃).



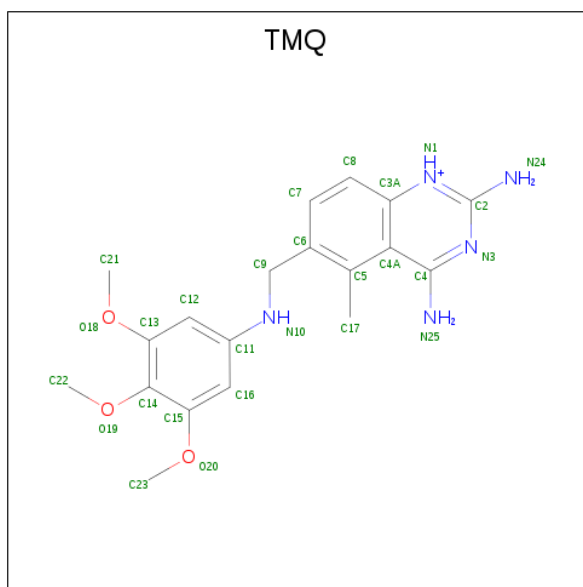
Mol	Chain	Residues	Atoms				ZeroOcc	AltConf		
			Total	C	N	O			P	
2	A	1	Total	48	21	7	17	3	0	0
2	B	1	Total	48	21	7	17	3	0	0

Continued on next page...

Continued from previous page...

Mol	Chain	Residues	Atoms				ZeroOcc	AltConf	
2	C	1	Total	C	N	O	P	0	0
			48	21	7	17	3		
2	D	1	Total	C	N	O	P	0	0
			48	21	7	17	3		

- Molecule 3 is TRIMETREXATE (three-letter code: TMQ) (formula: $C_{19}H_{24}N_5O_3$).



Mol	Chain	Residues	Atoms				ZeroOcc	AltConf
3	A	1	Total	C	N	O	0	0
			27	19	5	3		
3	B	1	Total	C	N	O	0	0
			27	19	5	3		
3	C	1	Total	C	N	O	0	0
			27	19	5	3		
3	D	1	Total	C	N	O	0	0
			27	19	5	3		

- Molecule 4 is ACETATE ION (three-letter code: ACT) (formula: $C_2H_3O_2$).



Mol	Chain	Residues	Atoms	ZeroOcc	AltConf
4	A	1	Total C O 4 2 2	0	0
4	B	1	Total C O 4 2 2	0	0
4	B	1	Total C O 4 2 2	0	0
4	C	1	Total C O 4 2 2	0	0
4	C	1	Total C O 4 2 2	0	0
4	D	1	Total C O 4 2 2	0	0

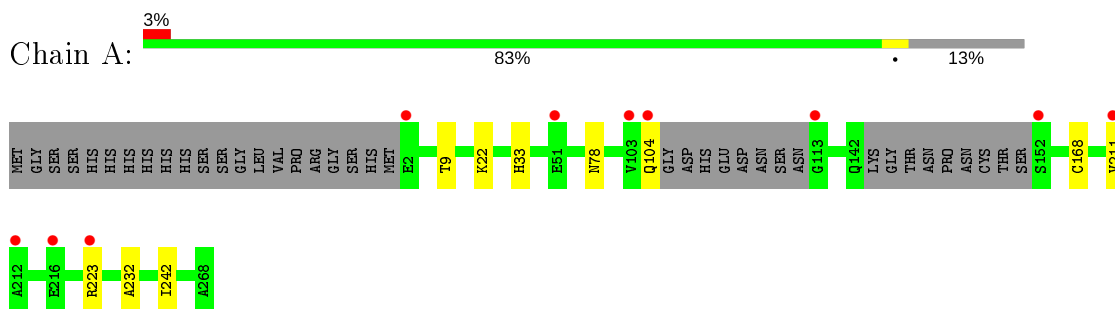
- Molecule 5 is water.

Mol	Chain	Residues	Atoms	ZeroOcc	AltConf
5	A	313	Total O 313 313	0	0
5	B	326	Total O 326 326	0	0
5	C	283	Total O 283 283	0	0
5	D	280	Total O 280 280	0	0

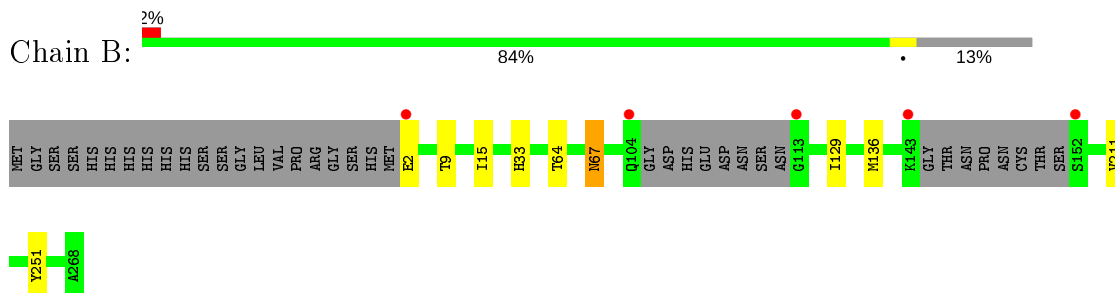
3 Residue-property plots [i](#)

These plots are drawn for all protein, RNA and DNA chains in the entry. The first graphic for a chain summarises the proportions of the various outlier classes displayed in the second graphic. The second graphic shows the sequence view annotated by issues in geometry and electron density. Residues are color-coded according to the number of geometric quality criteria for which they contain at least one outlier: green = 0, yellow = 1, orange = 2 and red = 3 or more. A red dot above a residue indicates a poor fit to the electron density ($RSRZ > 2$). Stretches of 2 or more consecutive residues without any outlier are shown as a green connector. Residues present in the sample, but not in the model, are shown in grey.

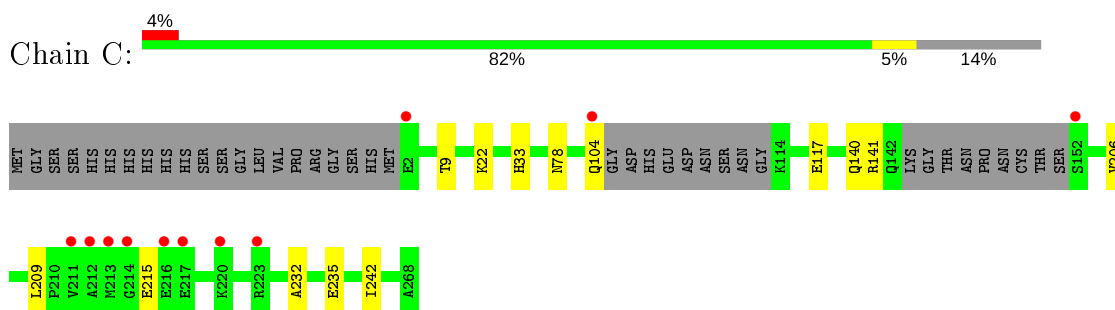
- Molecule 1: PTERIDINE REDUCTASE



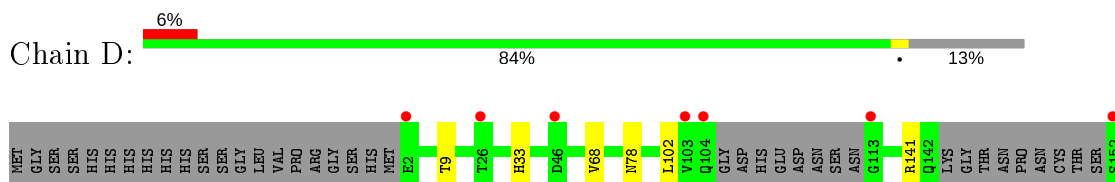
- Molecule 1: PTERIDINE REDUCTASE

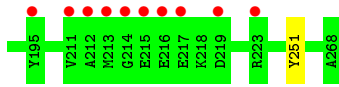


- Molecule 1: PTERIDINE REDUCTASE



- Molecule 1: PTERIDINE REDUCTASE





4 Data and refinement statistics

Property	Value	Source
Space group	P 1 21 1	Depositor
Cell constants a, b, c, α , β , γ	74.56Å 90.71Å 82.46Å 90.00° 115.69° 90.00°	Depositor
Resolution (Å)	31.05 – 1.30 31.05 – 1.30	Depositor EDS
% Data completeness (in resolution range)	98.7 (31.05-1.30) 98.7 (31.05-1.30)	Depositor EDS
R_{merge}	0.09	Depositor
R_{sym}	(Not available)	Depositor
$\langle I/\sigma(I) \rangle$ ¹	3.81 (at 1.30Å)	Xtrriage
Refinement program	REFMAC 5.5.0109	Depositor
R, R_{free}	0.121 , 0.148 0.131 , 0.156	Depositor DCC
R_{free} test set	12059 reflections (5.05%)	wwPDB-VP
Wilson B-factor (Å ²)	9.8	Xtrriage
Anisotropy	0.230	Xtrriage
Bulk solvent k_{sol} (e/Å ³), B_{sol} (Å ²)	0.39 , 64.1	EDS
L-test for twinning ²	$\langle L \rangle = 0.49$, $\langle L^2 \rangle = 0.32$	Xtrriage
Estimated twinning fraction	0.013 for h,-k,-h-l	Xtrriage
F_o, F_c correlation	0.98	EDS
Total number of atoms	9148	wwPDB-VP
Average B, all atoms (Å ²)	15.0	wwPDB-VP

Xtrriage's analysis on translational NCS is as follows: *The largest off-origin peak in the Patterson function is 10.06% of the height of the origin peak. No significant pseudotranslation is detected.*

¹Intensities estimated from amplitudes.

²Theoretical values of $\langle |L| \rangle$, $\langle L^2 \rangle$ for acentric reflections are 0.5, 0.333 respectively for untwinned datasets, and 0.375, 0.2 for perfectly twinned datasets.

5 Model quality [i](#)

5.1 Standard geometry [i](#)

Bond lengths and bond angles in the following residue types are not validated in this section: TMQ, NAP, ACT

The Z score for a bond length (or angle) is the number of standard deviations the observed value is removed from the expected value. A bond length (or angle) with $|Z| > 5$ is considered an outlier worth inspection. RMSZ is the root-mean-square of all Z scores of the bond lengths (or angles).

Mol	Chain	Bond lengths		Bond angles	
		RMSZ	# Z >5	RMSZ	# Z >5
1	A	0.46	0/1982	0.65	0/2687
1	B	0.47	0/1991	0.66	0/2699
1	C	0.45	0/1968	0.61	0/2668
1	D	0.46	0/1993	0.63	0/2704
All	All	0.46	0/7934	0.64	0/10758

There are no bond length outliers.

There are no bond angle outliers.

There are no chirality outliers.

There are no planarity outliers.

5.2 Too-close contacts [i](#)

In the following table, the Non-H and H(model) columns list the number of non-hydrogen atoms and hydrogen atoms in the chain respectively. The H(added) column lists the number of hydrogen atoms added and optimized by MolProbity. The Clashes column lists the number of clashes within the asymmetric unit, whereas Symm-Clashes lists symmetry related clashes.

Mol	Chain	Non-H	H(model)	H(added)	Clashes	Symm-Clashes
1	A	1910	0	1946	8	0
1	B	1906	0	1939	7	0
1	C	1897	0	1918	8	0
1	D	1909	0	1931	6	0
2	A	48	0	25	0	0
2	B	48	0	25	1	0
2	C	48	0	25	0	0
2	D	48	0	25	0	0
3	A	27	0	24	3	0

Continued on next page...

Continued from previous page...

Mol	Chain	Non-H	H(model)	H(added)	Clashes	Symm-Clashes
3	B	27	0	24	1	0
3	C	27	0	24	1	0
3	D	27	0	24	1	0
4	A	4	0	3	1	0
4	B	8	0	6	0	0
4	C	8	0	6	0	0
4	D	4	0	3	0	0
5	A	313	0	0	4	1
5	B	326	0	0	1	0
5	C	283	0	0	1	0
5	D	280	0	0	2	1
All	All	9148	0	7948	31	1

The all-atom clashscore is defined as the number of clashes found per 1000 atoms (including hydrogen atoms). The all-atom clashscore for this structure is 2.

All (31) close contacts within the same asymmetric unit are listed below, sorted by their clash magnitude.

Atom-1	Atom-2	Interatomic distance (Å)	Clash overlap (Å)
1:C:78[B]:ASN:OD1	1:C:141:ARG:NH2	2.03	0.91
1:C:117[B]:GLU:OE1	5:C:2168:HOH:O	1.89	0.87
1:A:104:GLN:H	1:C:140:GLN:HE22	1.24	0.83
1:A:78:ASN:ND2	5:A:2152:HOH:O	2.21	0.69
1:D:78[A]:ASN:OD1	1:D:141:ARG:NH1	2.27	0.67
3:C:1270:TMQ:HN52	3:C:1270:TMQ:C17	2.18	0.56
3:D:1270:TMQ:HN52	3:D:1270:TMQ:C17	2.18	0.56
3:A:1270:TMQ:C17	3:A:1270:TMQ:HN52	2.20	0.54
3:B:1270:TMQ:C17	3:B:1270:TMQ:HN52	2.21	0.53
1:D:141:ARG:HG2	5:D:2132:HOH:O	2.09	0.52
1:C:22[A]:LYS:NZ	1:C:235:GLU:O	2.43	0.51
1:C:9:THR:HA	1:C:33:HIS:HB3	1.97	0.47
3:A:1270:TMQ:H171	3:A:1270:TMQ:N10	2.30	0.46
1:A:168:CYS:SG	3:A:1270:TMQ:H233	2.56	0.46
1:C:22[A]:LYS:HG2	1:C:242:ILE:HG13	1.99	0.45
1:A:22:LYS:HG2	1:A:242:ILE:HG12	1.97	0.45
1:B:9:THR:HA	1:B:33:HIS:HB3	1.99	0.45
1:A:9:THR:HA	1:A:33:HIS:HB3	2.00	0.43
1:D:9:THR:HA	1:D:33:HIS:HB3	2.00	0.43
1:D:68[A]:VAL:HG23	5:D:2118:HOH:O	2.18	0.42
1:A:223[A]:ARG:NH2	5:A:2255:HOH:O	2.50	0.42
4:A:1271:ACT:O	5:A:2313:HOH:O	2.21	0.42

Continued on next page...

Continued from previous page...

Atom-1	Atom-2	Interatomic distance (Å)	Clash overlap (Å)
1:A:211:VAL:HG22	5:A:2243:HOH:O	2.19	0.42
1:B:15:ILE:HB	2:B:1269:NAP:H51N	2.02	0.42
1:A:232:ALA:HB2	1:B:251:TYR:CE2	2.55	0.42
1:C:206:VAL:HB	1:C:209:LEU:HD21	2.03	0.41
1:B:67[B]:ASN:ND2	5:B:2145:HOH:O	2.45	0.41
1:B:136[B]:MET:HG3	1:D:102:LEU:O	2.22	0.40
1:C:232:ALA:HB2	1:D:251:TYR:CE2	2.56	0.40

All (1) symmetry-related close contacts are listed below. The label for Atom-2 includes the symmetry operator and encoded unit-cell translations to be applied.

Atom-1	Atom-2	Interatomic distance (Å)	Clash overlap (Å)
5:A:2152:HOH:O	5:D:2124:HOH:O[1_655]	2.15	0.05

5.3 Torsion angles [i](#)

5.3.1 Protein backbone [i](#)

In the following table, the Percentiles column shows the percent Ramachandran outliers of the chain as a percentile score with respect to all X-ray entries followed by that with respect to entries of similar resolution.

The Analysed column shows the number of residues for which the backbone conformation was analysed, and the total number of residues.

Mol	Chain	Analysed	Favoured	Allowed	Outliers	Percentiles	
1	A	255/288 (88%)	245 (96%)	10 (4%)	0	100	100
1	B	257/288 (89%)	246 (96%)	11 (4%)	0	100	100
1	C	254/288 (88%)	245 (96%)	9 (4%)	0	100	100
1	D	258/288 (90%)	249 (96%)	9 (4%)	0	100	100
All	All	1024/1152 (89%)	985 (96%)	39 (4%)	0	100	100

There are no Ramachandran outliers to report.

5.3.2 Protein sidechains [i](#)

In the following table, the Percentiles column shows the percent sidechain outliers of the chain as a percentile score with respect to all X-ray entries followed by that with respect to entries of similar

resolution.

The Analysed column shows the number of residues for which the sidechain conformation was analysed, and the total number of residues.

Mol	Chain	Analysed	Rotameric	Outliers	Percentiles	
1	A	209/231 (90%)	209 (100%)	0	100	100
1	B	212/231 (92%)	205 (97%)	7 (3%)	38	5
1	C	209/231 (90%)	207 (99%)	2 (1%)	76	48
1	D	212/231 (92%)	212 (100%)	0	100	100
All	All	842/924 (91%)	833 (99%)	9 (1%)	81	45

All (9) residues with a non-rotameric sidechain are listed below:

Mol	Chain	Res	Type
1	B	2	GLU
1	B	64[A]	THR
1	B	64[B]	THR
1	B	67[A]	ASN
1	B	67[B]	ASN
1	B	211[A]	VAL
1	B	211[B]	VAL
1	C	104	GLN
1	C	215	GLU

Some sidechains can be flipped to improve hydrogen bonding and reduce clashes. All (6) such sidechains are listed below:

Mol	Chain	Res	Type
1	A	104	GLN
1	A	175	ASN
1	B	175	ASN
1	C	140	GLN
1	C	175	ASN
1	D	175	ASN

5.3.3 RNA

There are no RNA molecules in this entry.

5.4 Non-standard residues in protein, DNA, RNA chains [i](#)

There are no non-standard protein/DNA/RNA residues in this entry.

5.5 Carbohydrates [i](#)

There are no carbohydrates in this entry.

5.6 Ligand geometry [i](#)

14 ligands are modelled in this entry.

In the following table, the Counts columns list the number of bonds (or angles) for which Mogul statistics could be retrieved, the number of bonds (or angles) that are observed in the model and the number of bonds (or angles) that are defined in the Chemical Component Dictionary. The Link column lists molecule types, if any, to which the group is linked. The Z score for a bond length (or angle) is the number of standard deviations the observed value is removed from the expected value. A bond length (or angle) with $|Z| > 2$ is considered an outlier worth inspection. RMSZ is the root-mean-square of all Z scores of the bond lengths (or angles).

Mol	Type	Chain	Res	Link	Bond lengths			Bond angles		
					Counts	RMSZ	# Z > 2	Counts	RMSZ	# Z > 2
2	NAP	B	1269	-	45,52,52	1.12	5 (11%)	56,80,80	1.13	3 (5%)
4	ACT	B	1271	-	1,3,3	1.28	0	0,3,3	0.00	-
4	ACT	D	1271	-	1,3,3	0.88	0	0,3,3	0.00	-
3	TMQ	D	1270	-	29,29,29	0.92	1 (3%)	39,41,41	1.62	7 (17%)
4	ACT	B	1272	-	1,3,3	1.33	0	0,3,3	0.00	-
4	ACT	C	1272	-	1,3,3	2.79	1 (100%)	0,3,3	0.00	-
2	NAP	C	1269	-	45,52,52	1.13	4 (8%)	56,80,80	1.15	6 (10%)
2	NAP	A	1269	-	45,52,52	1.05	4 (8%)	56,80,80	1.09	4 (7%)
3	TMQ	B	1270	-	29,29,29	0.84	1 (3%)	39,41,41	1.33	5 (12%)
2	NAP	D	1269	-	45,52,52	1.05	2 (4%)	56,80,80	1.15	4 (7%)
3	TMQ	C	1270	-	29,29,29	0.94	1 (3%)	39,41,41	1.46	6 (15%)
4	ACT	A	1271	-	1,3,3	0.93	0	0,3,3	0.00	-
3	TMQ	A	1270	-	29,29,29	0.90	1 (3%)	39,41,41	1.37	4 (10%)
4	ACT	C	1271	-	1,3,3	1.15	0	0,3,3	0.00	-

In the following table, the Chirals column lists the number of chiral outliers, the number of chiral centers analysed, the number of these observed in the model and the number defined in the Chemical Component Dictionary. Similar counts are reported in the Torsion and Rings columns. '-' means no outliers of that kind were identified.

Mol	Type	Chain	Res	Link	Chirals	Torsions	Rings
2	NAP	B	1269	-	-	0/31/67/67	0/5/5/5
3	TMQ	D	1270	-	-	2/11/11/11	0/3/3/3
2	NAP	C	1269	-	-	0/31/67/67	0/5/5/5
2	NAP	A	1269	-	-	0/31/67/67	0/5/5/5
3	TMQ	B	1270	-	-	4/11/11/11	0/3/3/3
2	NAP	D	1269	-	-	0/31/67/67	0/5/5/5
3	TMQ	C	1270	-	-	2/11/11/11	0/3/3/3
3	TMQ	A	1270	-	-	2/11/11/11	0/3/3/3

All (20) bond length outliers are listed below:

Mol	Chain	Res	Type	Atoms	Z	Observed(Å)	Ideal(Å)
2	B	1269	NAP	C2N-N1N	3.59	1.39	1.35
2	A	1269	NAP	O7N-C7N	3.53	1.30	1.24
2	C	1269	NAP	O7N-C7N	3.28	1.30	1.24
2	B	1269	NAP	O7N-C7N	3.26	1.30	1.24
3	A	1270	TMQ	C13-C14	3.25	1.47	1.41
2	D	1269	NAP	O7N-C7N	3.24	1.30	1.24
3	D	1270	TMQ	C13-C14	3.23	1.47	1.41
3	C	1270	TMQ	C13-C14	3.21	1.47	1.41
2	C	1269	NAP	C2N-N1N	3.11	1.38	1.35
2	D	1269	NAP	C2N-N1N	2.86	1.38	1.35
2	C	1269	NAP	O4B-C1B	-2.85	1.37	1.41
4	C	1272	ACT	CH3-C	2.79	1.52	1.48
2	A	1269	NAP	C2N-N1N	2.49	1.38	1.35
2	C	1269	NAP	P2B-O2B	2.41	1.63	1.59
3	B	1270	TMQ	C13-C14	2.36	1.46	1.41
2	A	1269	NAP	O4B-C1B	-2.35	1.37	1.41
2	B	1269	NAP	O4B-C1B	-2.11	1.38	1.41
2	B	1269	NAP	P2B-O1X	2.03	1.57	1.50
2	A	1269	NAP	P2B-O1X	2.03	1.57	1.50
2	B	1269	NAP	P2B-O3X	-2.01	1.47	1.54

All (39) bond angle outliers are listed below:

Mol	Chain	Res	Type	Atoms	Z	Observed(°)	Ideal(°)
3	D	1270	TMQ	N1-C2-N3	-5.63	119.71	127.22
3	C	1270	TMQ	N1-C2-N3	-4.65	121.02	127.22
3	B	1270	TMQ	N1-C2-N3	-4.59	121.11	127.22
3	A	1270	TMQ	N1-C2-N3	-3.72	122.25	127.22
3	A	1270	TMQ	C17-C5-C6	-3.61	116.67	120.80
2	B	1269	NAP	C3N-C7N-N7N	3.43	121.86	117.75

Continued on next page...

Continued from previous page...

Mol	Chain	Res	Type	Atoms	Z	Observed(°)	Ideal(°)
3	C	1270	TMQ	O18-C13-C14	3.36	121.07	115.16
2	A	1269	NAP	N3A-C2A-N1A	-3.34	123.45	128.68
3	C	1270	TMQ	C23-O20-C15	3.33	122.55	117.53
3	D	1270	TMQ	C23-O20-C15	3.27	122.46	117.53
2	D	1269	NAP	N3A-C2A-N1A	-3.19	123.69	128.68
3	B	1270	TMQ	C23-O20-C15	3.15	122.29	117.53
3	A	1270	TMQ	C23-O20-C15	3.14	122.27	117.53
2	B	1269	NAP	N3A-C2A-N1A	-2.99	124.00	128.68
2	C	1269	NAP	C3N-C7N-N7N	2.97	121.31	117.75
2	D	1269	NAP	C4A-C5A-N7A	-2.90	106.38	109.40
2	C	1269	NAP	N3A-C2A-N1A	-2.83	124.25	128.68
2	C	1269	NAP	C3N-C2N-N1N	-2.68	117.81	120.43
2	C	1269	NAP	C2N-C3N-C4N	2.67	121.28	118.26
2	D	1269	NAP	O7N-C7N-C3N	-2.56	116.57	119.63
3	B	1270	TMQ	C17-C5-C6	-2.54	117.89	120.80
2	B	1269	NAP	C1B-N9A-C4A	-2.49	122.27	126.64
3	D	1270	TMQ	C4-C4A-C3A	2.48	116.55	114.86
3	D	1270	TMQ	C17-C5-C6	-2.44	118.01	120.80
3	D	1270	TMQ	C2-N1-C3A	2.38	122.21	116.33
3	C	1270	TMQ	C17-C5-C6	-2.33	118.13	120.80
2	A	1269	NAP	O7N-C7N-C3N	-2.31	116.87	119.63
2	A	1269	NAP	C3N-C7N-N7N	2.30	120.52	117.75
2	D	1269	NAP	C3N-C7N-N7N	2.30	120.52	117.75
2	C	1269	NAP	C5A-C6A-N6A	2.30	123.85	120.35
3	A	1270	TMQ	C11-C16-C15	2.24	122.47	119.45
3	D	1270	TMQ	C21-O18-C13	2.21	120.86	117.53
2	A	1269	NAP	C1B-N9A-C4A	-2.21	122.76	126.64
3	B	1270	TMQ	C2-N1-C3A	2.14	121.64	116.33
3	C	1270	TMQ	O18-C13-C12	-2.13	120.46	124.12
2	C	1269	NAP	O7N-C7N-C3N	-2.10	117.12	119.63
3	C	1270	TMQ	C9-C6-C7	-2.06	116.31	121.00
3	D	1270	TMQ	O18-C13-C14	2.04	118.75	115.16
3	B	1270	TMQ	C9-C6-C7	-2.02	116.41	121.00

There are no chirality outliers.

All (10) torsion outliers are listed below:

Mol	Chain	Res	Type	Atoms
3	A	1270	TMQ	C14-C13-O18-C21
3	B	1270	TMQ	C14-C13-O18-C21
3	C	1270	TMQ	C14-C13-O18-C21
3	A	1270	TMQ	C12-C13-O18-C21

Continued on next page...

Continued from previous page...

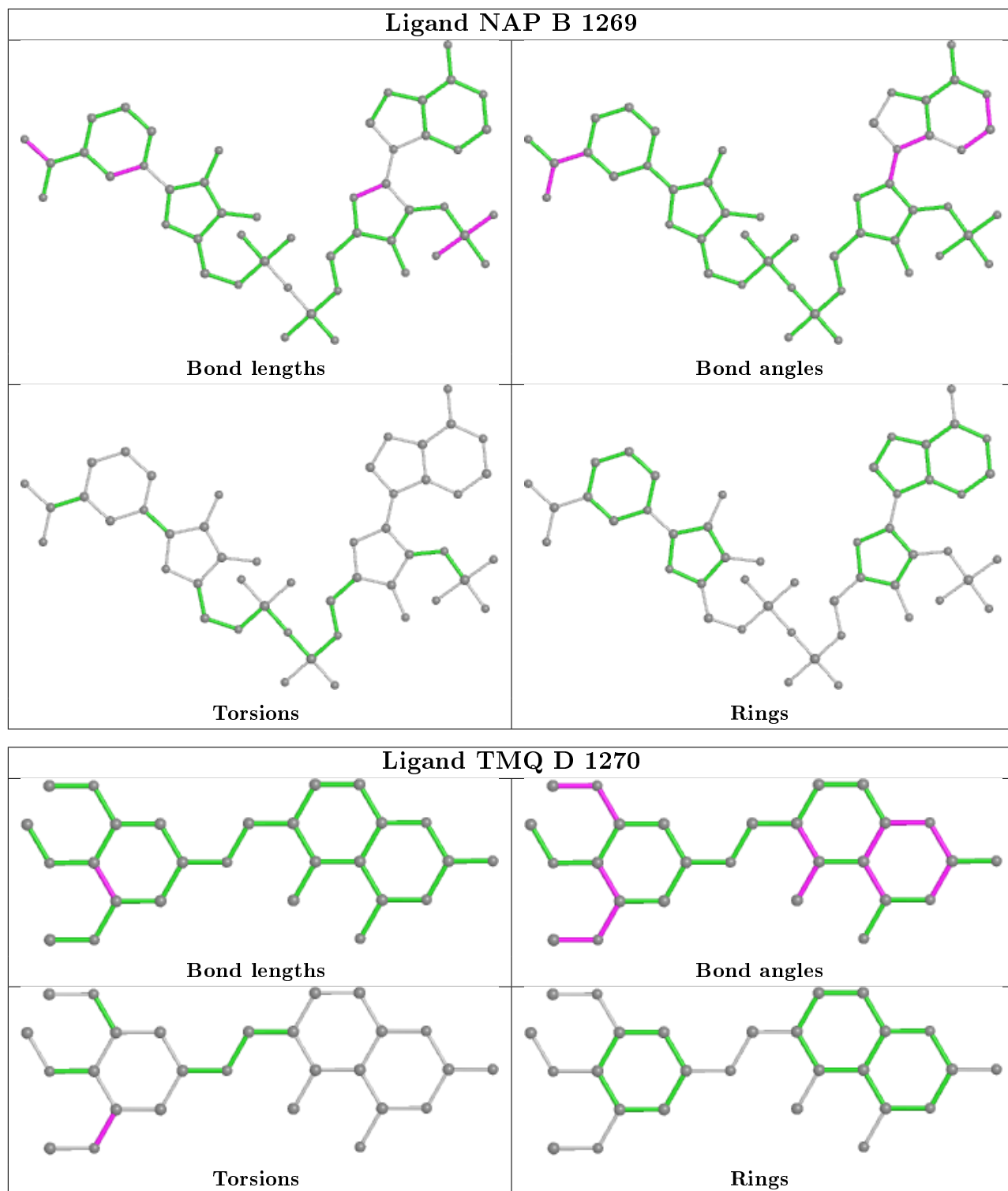
Mol	Chain	Res	Type	Atoms
3	B	1270	TMQ	C12-C13-O18-C21
3	C	1270	TMQ	C12-C13-O18-C21
3	D	1270	TMQ	C14-C13-O18-C21
3	D	1270	TMQ	C12-C13-O18-C21
3	B	1270	TMQ	C14-C15-O20-C23
3	B	1270	TMQ	C16-C15-O20-C23

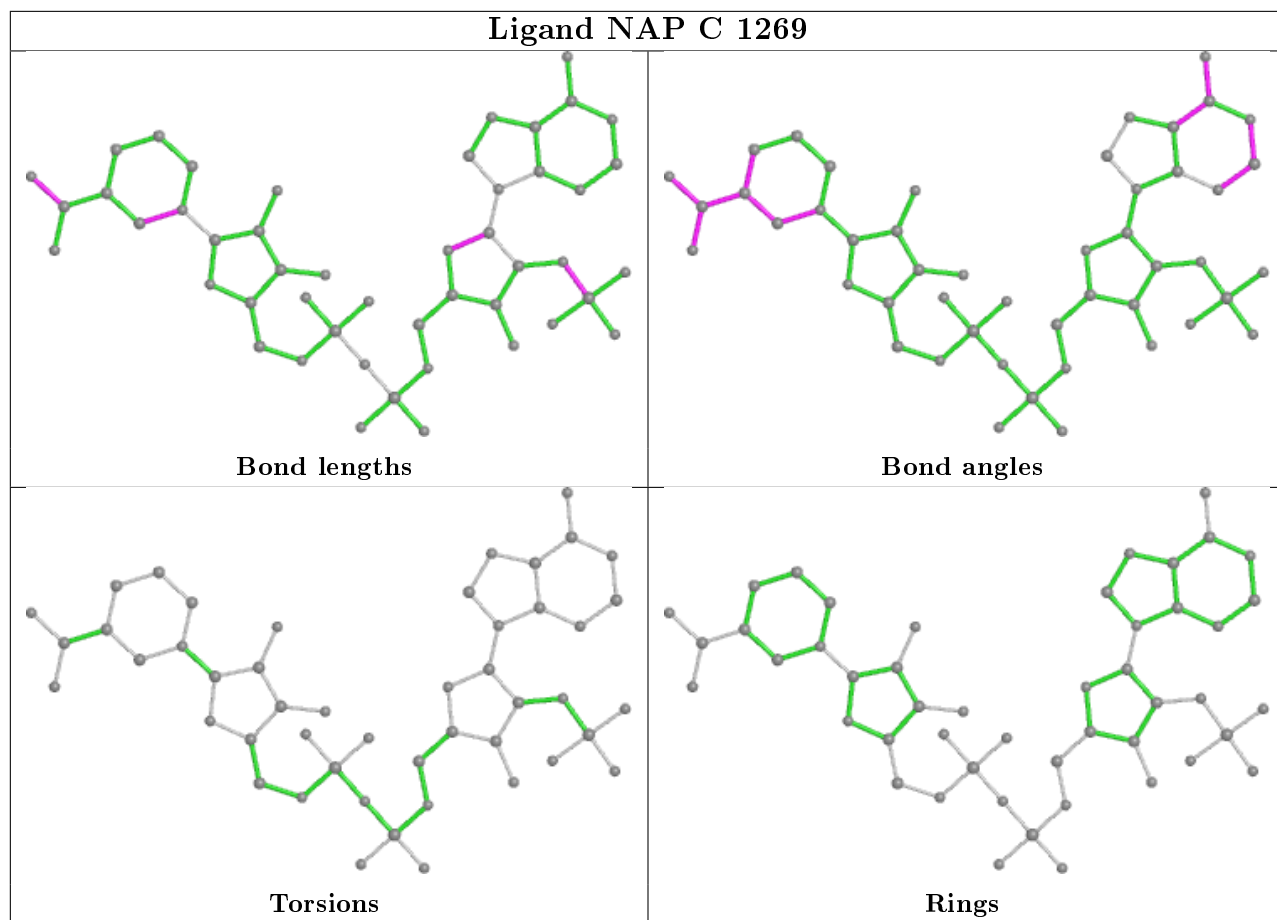
There are no ring outliers.

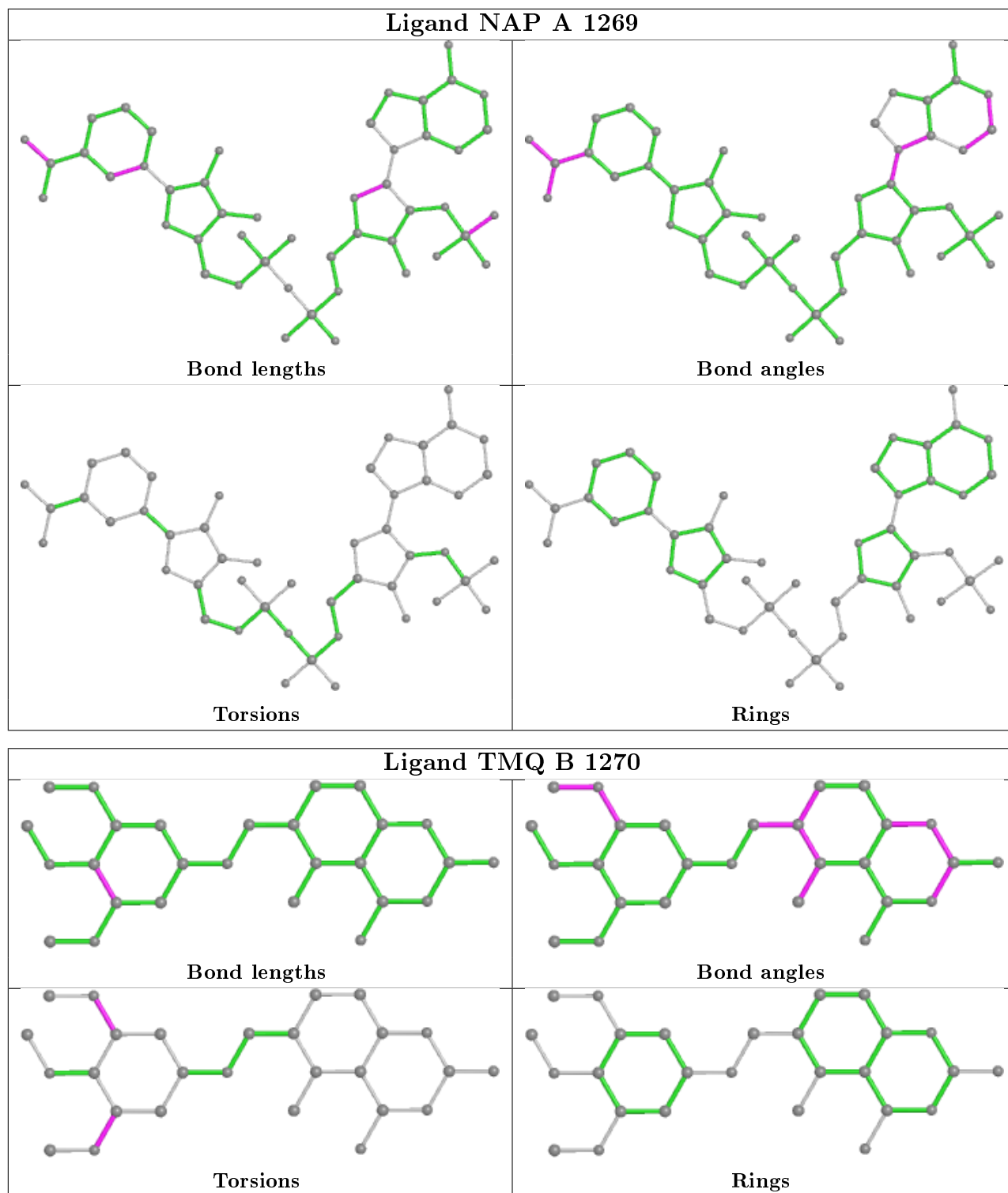
6 monomers are involved in 8 short contacts:

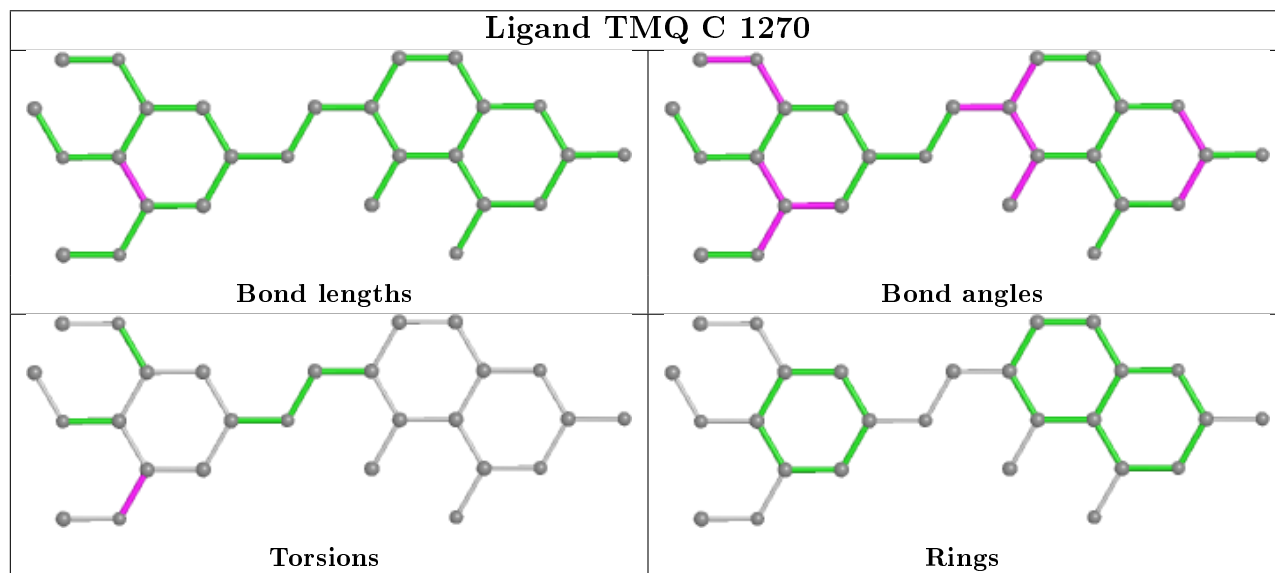
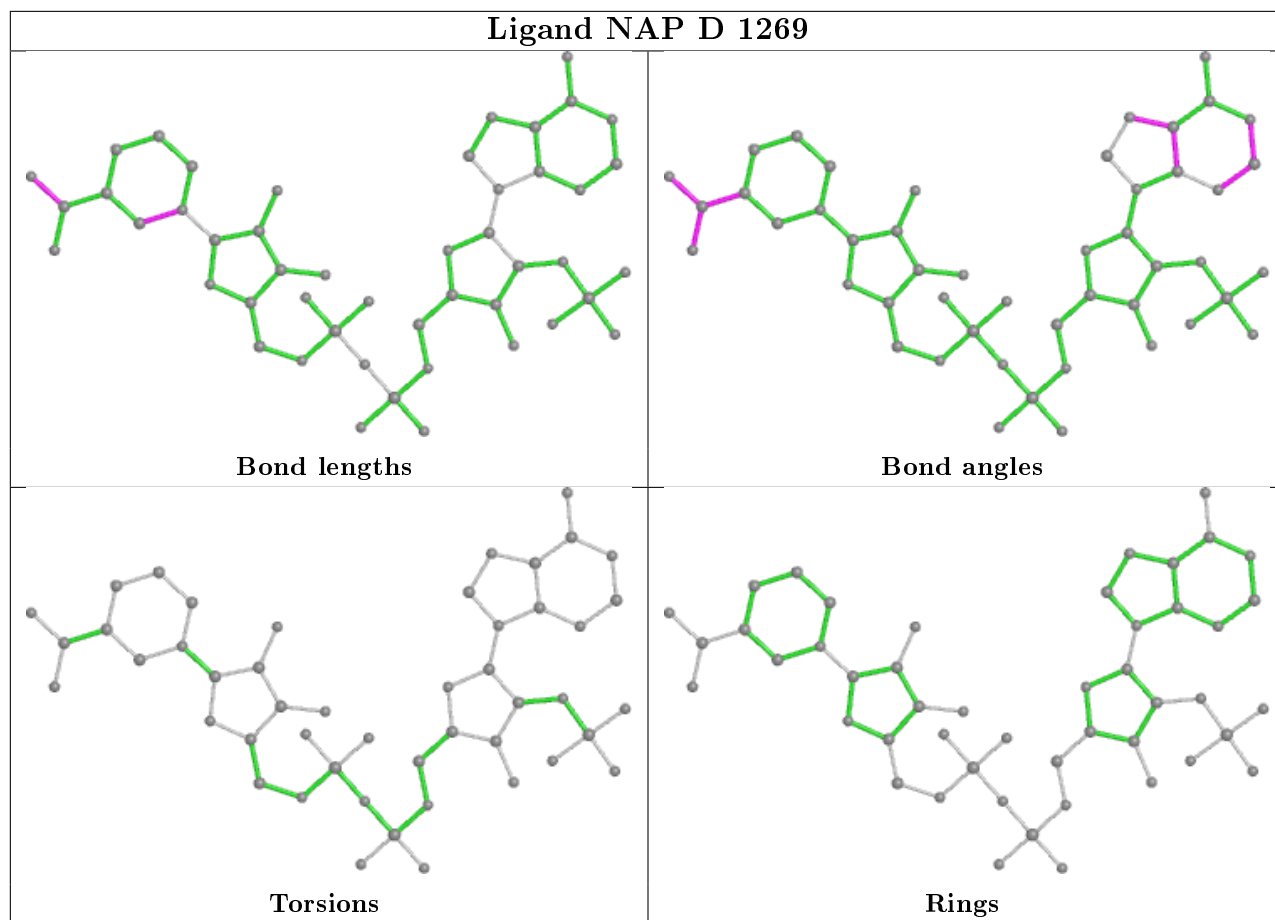
Mol	Chain	Res	Type	Clashes	Symm-Clashes
2	B	1269	NAP	1	0
3	D	1270	TMQ	1	0
3	B	1270	TMQ	1	0
3	C	1270	TMQ	1	0
4	A	1271	ACT	1	0
3	A	1270	TMQ	3	0

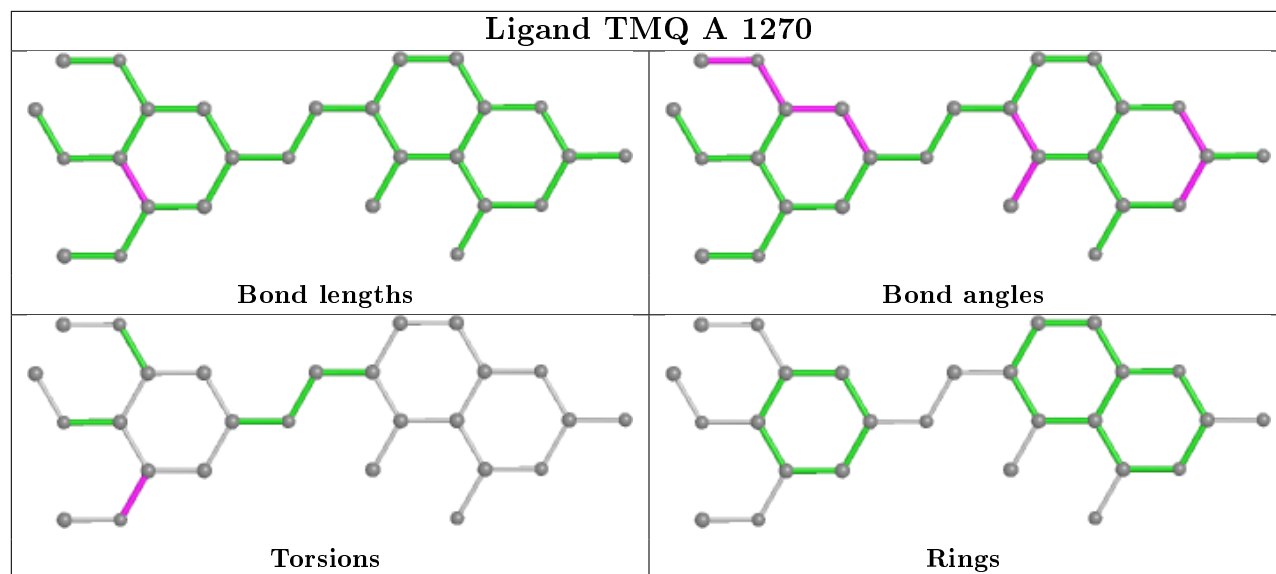
The following is a two-dimensional graphical depiction of Mogul quality analysis of bond lengths, bond angles, torsion angles, and ring geometry for all instances of the Ligand of Interest. In addition, ligands with molecular weight > 250 and outliers as shown on the validation Tables will also be included. For torsion angles, if less than 5% of the Mogul distribution of torsion angles is within 10 degrees of the torsion angle in question, then that torsion angle is considered an outlier. Any bond that is central to one or more torsion angles identified as an outlier by Mogul will be highlighted in the graph. For rings, the root-mean-square deviation (RMSD) between the ring in question and similar rings identified by Mogul is calculated over all ring torsion angles. If the average RMSD is greater than 60 degrees and the minimal RMSD between the ring in question and any Mogul-identified rings is also greater than 60 degrees, then that ring is considered an outlier. The outliers are highlighted in purple. The color gray indicates Mogul did not find sufficient equivalents in the CSD to analyse the geometry.











5.7 Other polymers [i](#)

There are no such residues in this entry.

5.8 Polymer linkage issues [i](#)

There are no chain breaks in this entry.

6 Fit of model and data [i](#)

6.1 Protein, DNA and RNA chains [i](#)

In the following table, the column labelled '#RSRZ > 2' contains the number (and percentage) of RSRZ outliers, followed by percent RSRZ outliers for the chain as percentile scores relative to all X-ray entries and entries of similar resolution. The OWAB column contains the minimum, median, 95th percentile and maximum values of the occupancy-weighted average B-factor per residue. The column labelled 'Q < 0.9' lists the number of (and percentage) of residues with an average occupancy less than 0.9.

Mol	Chain	Analysed	<RSRZ>	#RSRZ>2	OWAB(Å ²)	Q<0.9
1	A	250/288 (86%)	0.13	10 (4%) 38 35	6, 10, 21, 30	2 (0%)
1	B	251/288 (87%)	0.03	5 (1%) 65 65	6, 10, 20, 34	3 (1%)
1	C	249/288 (86%)	0.22	11 (4%) 34 32	6, 10, 25, 44	2 (0%)
1	D	250/288 (86%)	0.19	17 (6%) 17 14	6, 11, 24, 32	5 (2%)
All	All	1000/1152 (86%)	0.14	43 (4%) 35 32	6, 10, 22, 44	12 (1%)

All (43) RSRZ outliers are listed below:

Mol	Chain	Res	Type	RSRZ
1	C	212	ALA	10.8
1	B	104	GLN	9.4
1	B	113	GLY	8.1
1	D	104	GLN	7.5
1	D	113	GLY	7.1
1	A	113	GLY	6.9
1	A	104	GLN	6.2
1	C	104	GLN	5.8
1	C	2	GLU	5.8
1	C	214	GLY	5.6
1	A	212	ALA	5.2
1	C	211	VAL	5.1
1	C	216	GLU	4.5
1	B	2	GLU	4.1
1	D	214	GLY	3.9
1	D	2	GLU	3.6
1	D	152	SER	3.5
1	C	217	GLU	3.2
1	A	216	GLU	3.1
1	C	152	SER	3.1
1	D	213	MET	3.0

Continued on next page...

Continued from previous page...

Mol	Chain	Res	Type	RSRZ
1	A	2	GLU	3.0
1	D	217	GLU	3.0
1	D	195	TYR	2.9
1	A	223[A]	ARG	2.9
1	C	213	MET	2.7
1	C	223	ARG	2.7
1	D	212	ALA	2.6
1	B	143	LYS	2.5
1	D	223	ARG	2.4
1	B	152[A]	SER	2.4
1	A	152	SER	2.3
1	D	103	VAL	2.3
1	A	51[A]	GLU	2.3
1	D	211	VAL	2.3
1	D	46	ASP	2.2
1	D	216	GLU	2.2
1	D	215[A]	GLU	2.2
1	A	211	VAL	2.2
1	D	219	ASP	2.1
1	D	26	THR	2.1
1	C	220	LYS	2.1
1	A	103	VAL	2.1

6.2 Non-standard residues in protein, DNA, RNA chains [i](#)

There are no non-standard protein/DNA/RNA residues in this entry.

6.3 Carbohydrates [i](#)

There are no carbohydrates in this entry.

6.4 Ligands [i](#)

In the following table, the Atoms column lists the number of modelled atoms in the group and the number defined in the chemical component dictionary. The B-factors column lists the minimum, median, 95th percentile and maximum values of B factors of atoms in the group. The column labelled 'Q< 0.9' lists the number of atoms with occupancy less than 0.9.

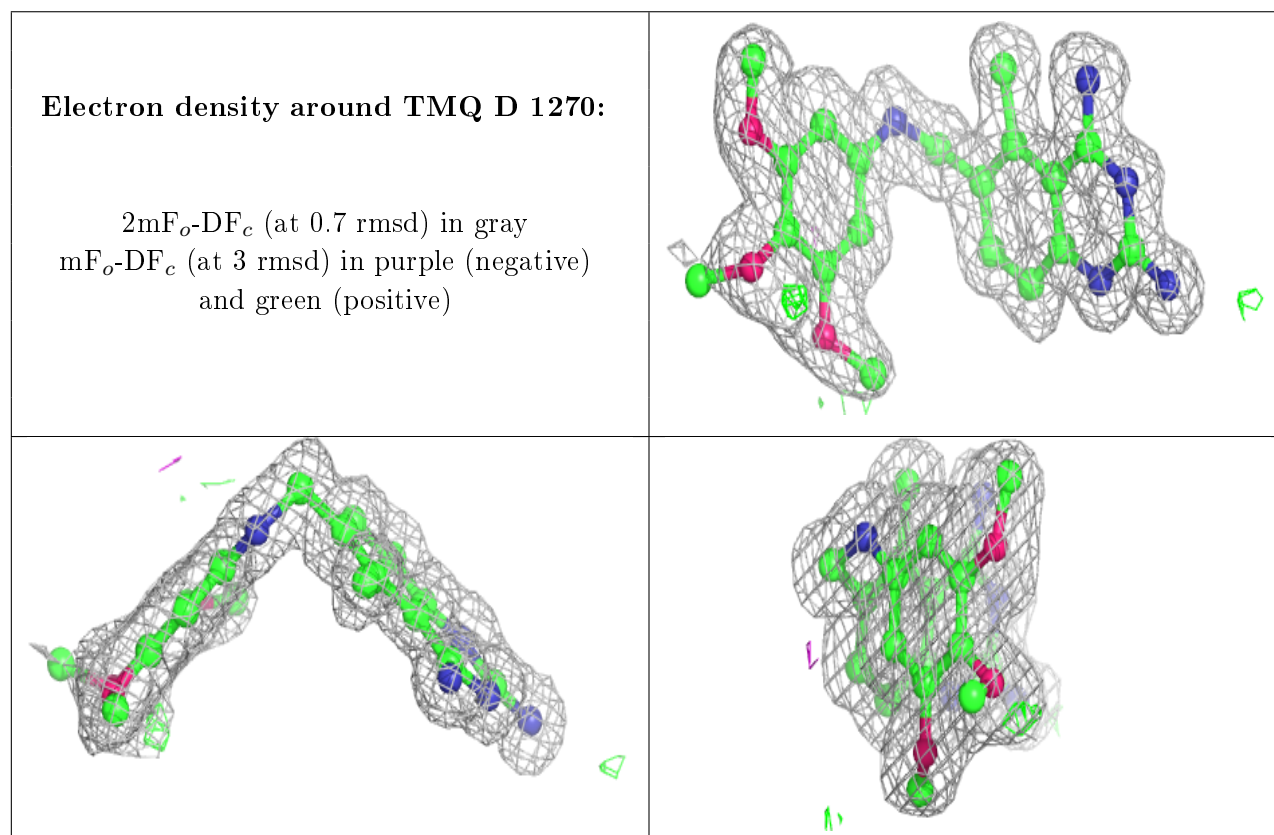
Mol	Type	Chain	Res	Atoms	RSCC	RSR	B-factors(\AA^2)	Q<0.9
4	ACT	A	1271	4/4	0.85	0.18	21,21,21,22	0

Continued on next page...

Continued from previous page...

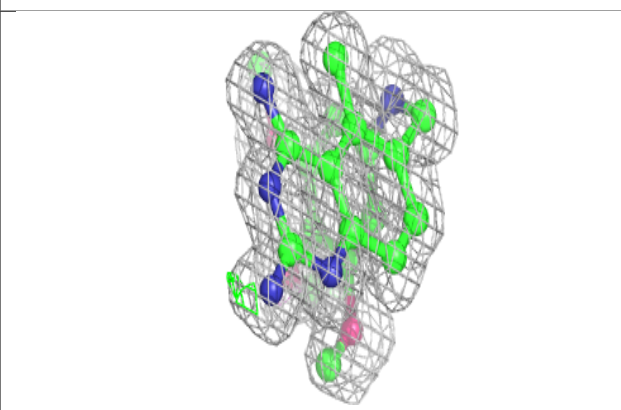
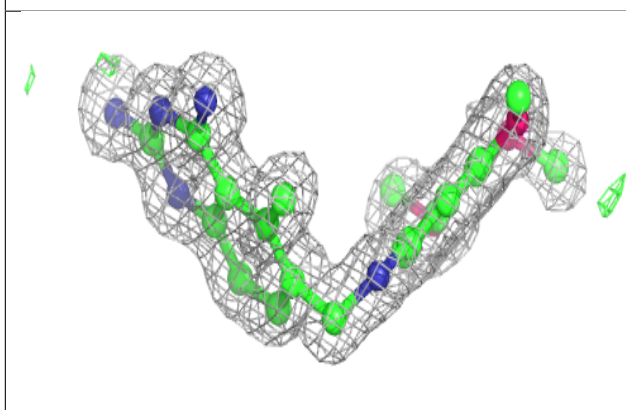
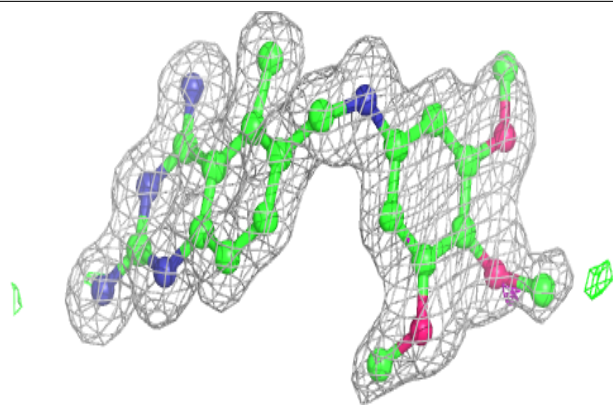
Mol	Type	Chain	Res	Atoms	RSCC	RSR	B-factors(\AA^2)	Q<0.9
4	ACT	D	1271	4/4	0.88	0.17	21,21,21,22	0
4	ACT	C	1271	4/4	0.89	0.18	19,20,20,21	0
4	ACT	C	1272	4/4	0.91	0.14	19,21,21,22	0
4	ACT	B	1272	4/4	0.92	0.15	20,20,21,22	0
3	TMQ	D	1270	27/27	0.96	0.08	8,14,25,29	0
3	TMQ	A	1270	27/27	0.96	0.08	8,12,26,29	0
3	TMQ	C	1270	27/27	0.96	0.07	7,12,24,28	0
3	TMQ	B	1270	27/27	0.97	0.06	7,11,22,23	0
4	ACT	B	1271	4/4	0.98	0.06	10,11,11,11	0
2	NAP	C	1269	48/48	0.99	0.05	6,8,10,11	0
2	NAP	A	1269	48/48	0.99	0.06	6,8,10,12	0
2	NAP	B	1269	48/48	0.99	0.06	6,8,10,10	0
2	NAP	D	1269	48/48	0.99	0.06	7,9,11,15	0

The following is a graphical depiction of the model fit to experimental electron density of all instances of the Ligand of Interest. In addition, ligands with molecular weight > 250 and outliers as shown on the geometry validation Tables will also be included. Each fit is shown from different orientation to approximate a three-dimensional view.

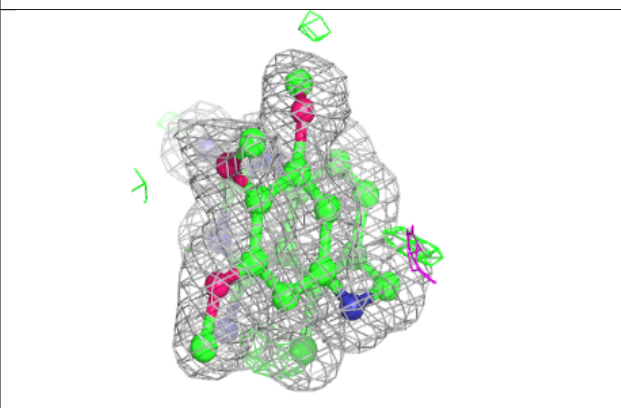
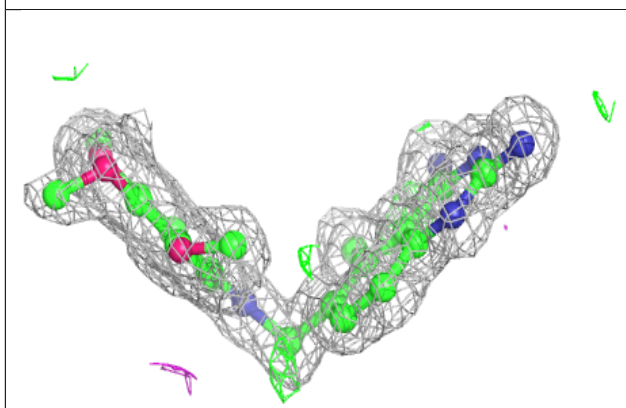
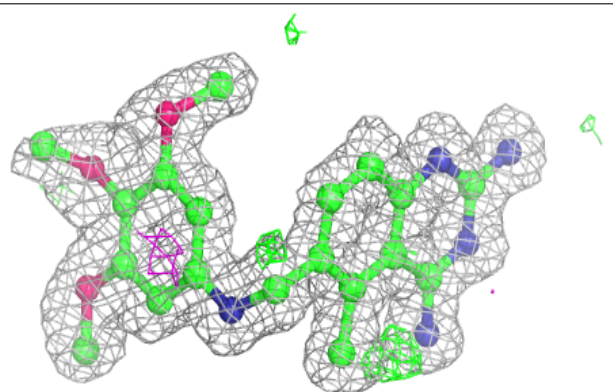


Electron density around TMQ A 1270:

$2mF_o-DF_c$ (at 0.7 rmsd) in gray
 mF_o-DF_c (at 3 rmsd) in purple (negative)
and green (positive)

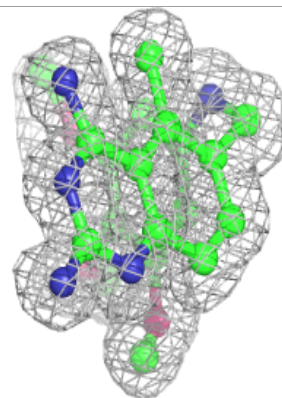
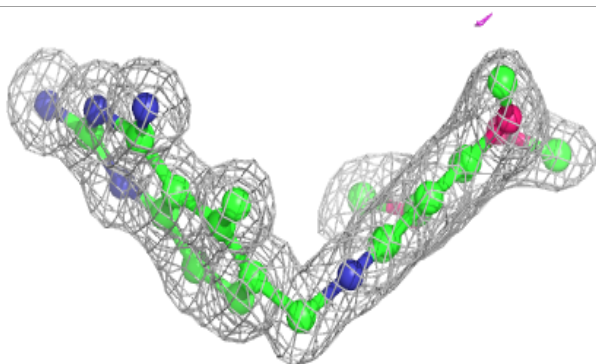
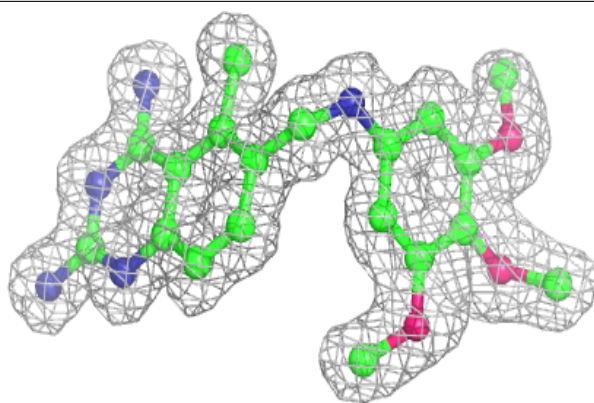
**Electron density around TMQ C 1270:**

$2mF_o-DF_c$ (at 0.7 rmsd) in gray
 mF_o-DF_c (at 3 rmsd) in purple (negative)
and green (positive)

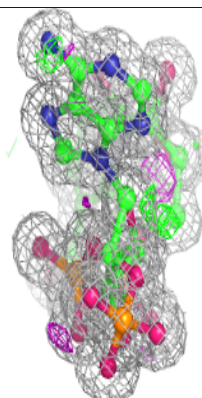
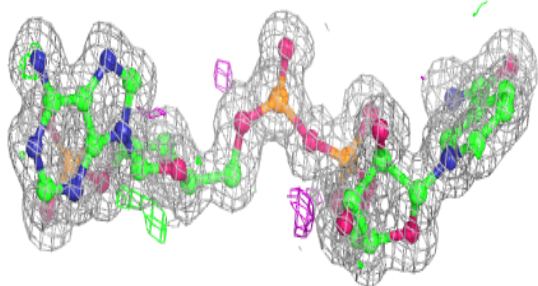
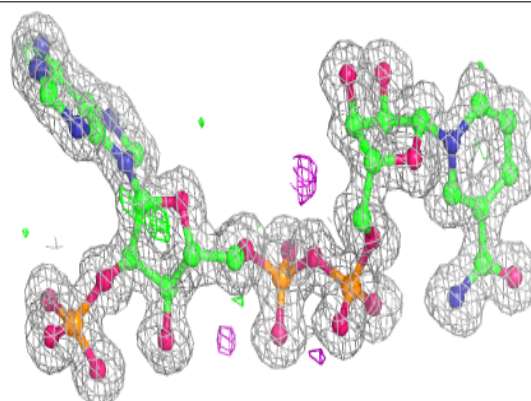


Electron density around TMQ B 1270:

$2mF_o-DF_c$ (at 0.7 rmsd) in gray
 mF_o-DF_c (at 3 rmsd) in purple (negative)
and green (positive)

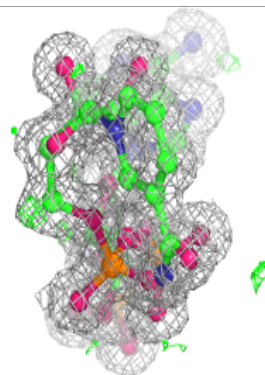
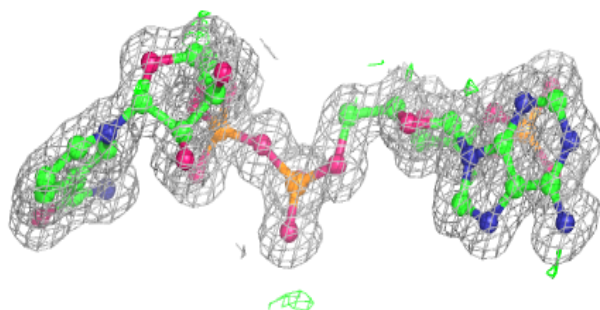
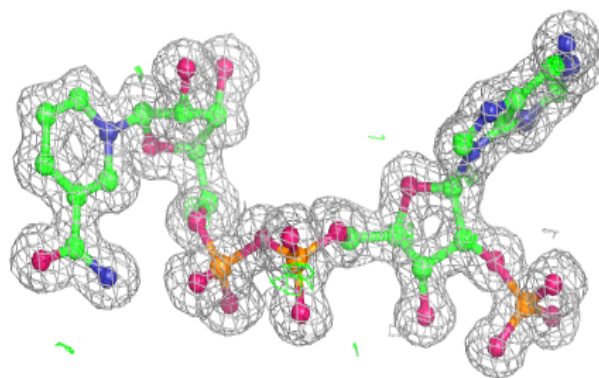
**Electron density around NAP C 1269:**

$2mF_o-DF_c$ (at 0.7 rmsd) in gray
 mF_o-DF_c (at 3 rmsd) in purple (negative)
and green (positive)

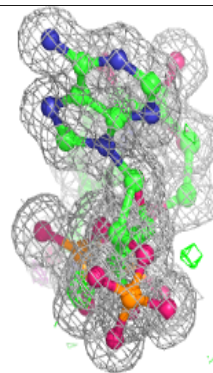
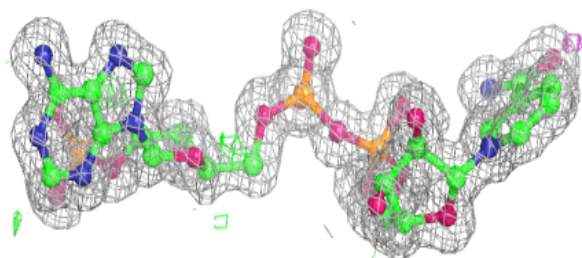
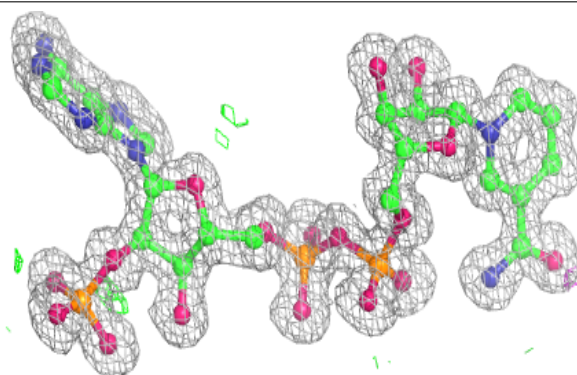


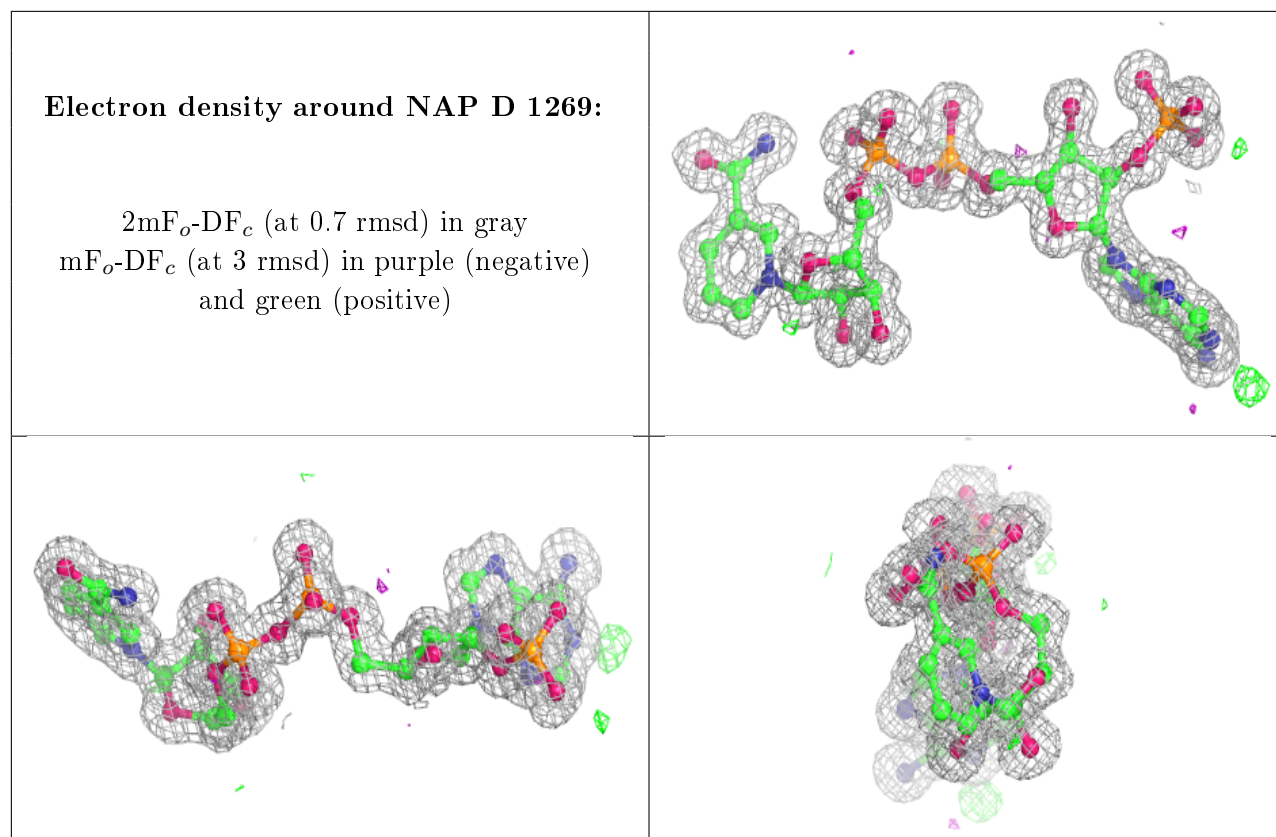
Electron density around NAP A 1269:

$2mF_o-DF_c$ (at 0.7 rmsd) in gray
 mF_o-DF_c (at 3 rmsd) in purple (negative)
and green (positive)

**Electron density around NAP B 1269:**

$2mF_o-DF_c$ (at 0.7 rmsd) in gray
 mF_o-DF_c (at 3 rmsd) in purple (negative)
and green (positive)





6.5 Other polymers [i](#)

There are no such residues in this entry.