



# Full wwPDB X-ray Structure Validation Report ⓘ

Nov 5, 2023 – 09:50 PM EST

PDB ID : 4XAG  
Title : Cycles of destabilization and repair underlie the evolution of new enzyme function  
Authors : Jackson, C.J.; Campbell, E.; Kaltenbach, M.; Tokuriki, N.  
Deposited on : 2014-12-14  
Resolution : 1.60 Å(reported)

This is a Full wwPDB X-ray Structure Validation Report for a publicly released PDB entry.

We welcome your comments at [validation@mail.wwpdb.org](mailto:validation@mail.wwpdb.org)

A user guide is available at

<https://www.wwpdb.org/validation/2017/XrayValidationReportHelp>

with specific help available everywhere you see the ⓘ symbol.

The types of validation reports are described at

<http://www.wwpdb.org/validation/2017/FAQs#types>.

---

The following versions of software and data (see [references ⓘ](#)) were used in the production of this report:

MolProbity : 4.02b-467  
Mogul : 1.8.5 (274361), CSD as541be (2020)  
Xtriage (Phenix) : 1.13  
EDS : 2.36  
Percentile statistics : 20191225.v01 (using entries in the PDB archive December 25th 2019)  
Refmac : 5.8.0158  
CCP4 : 7.0.044 (Gargrove)  
Ideal geometry (proteins) : Engh & Huber (2001)  
Ideal geometry (DNA, RNA) : Parkinson et al. (1996)  
Validation Pipeline (wwPDB-VP) : 2.36

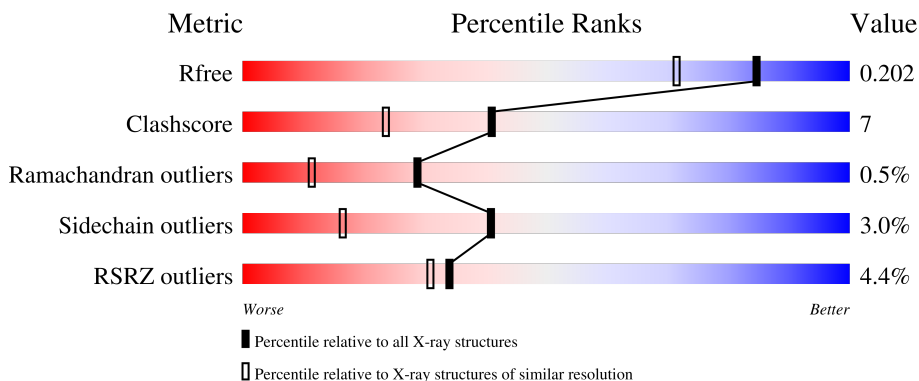
# 1 Overall quality at a glance

The following experimental techniques were used to determine the structure:

*X-RAY DIFFRACTION*

The reported resolution of this entry is 1.60 Å.

Percentile scores (ranging between 0-100) for global validation metrics of the entry are shown in the following graphic. The table shows the number of entries on which the scores are based.



Metric	Whole archive (#Entries)	Similar resolution (#Entries, resolution range(Å))
$R_{free}$	130704	3398 (1.60-1.60)
Clashscore	141614	3665 (1.60-1.60)
Ramachandran outliers	138981	3564 (1.60-1.60)
Sidechain outliers	138945	3563 (1.60-1.60)
RSRZ outliers	127900	3321 (1.60-1.60)

The table below summarises the geometric issues observed across the polymeric chains and their fit to the electron density. The red, orange, yellow and green segments of the lower bar indicate the fraction of residues that contain outliers for  $\geq 3$ , 2, 1 and 0 types of geometric quality criteria respectively. A grey segment represents the fraction of residues that are not modelled. The numeric value for each fraction is indicated below the corresponding segment, with a dot representing fractions  $\leq 5\%$ . The upper red bar (where present) indicates the fraction of residues that have poor fit to the electron density. The numeric value is given above the bar.

Mol	Chain	Length	Quality of chain
1	A	333	 6% 86% 11% ..
1	G	333	 2% 86% 11% ..

The following table lists non-polymeric compounds, carbohydrate monomers and non-standard residues in protein, DNA, RNA chains that are outliers for geometric or electron-density-fit criteria:

Mol	Type	Chain	Res	Chirality	Geometry	Clashes	Electron density
3	MPD	A	2403	-	-	X	X
3	MPD	A	2405	-	-	X	X

## 2 Entry composition [i](#)

There are 5 unique types of molecules in this entry. The entry contains 5791 atoms, of which 0 are hydrogens and 0 are deuteriums.

In the tables below, the ZeroOcc column contains the number of atoms modelled with zero occupancy, the AltConf column contains the number of residues with at least one atom in alternate conformation and the Trace column contains the number of residues modelled with at most 2 atoms.

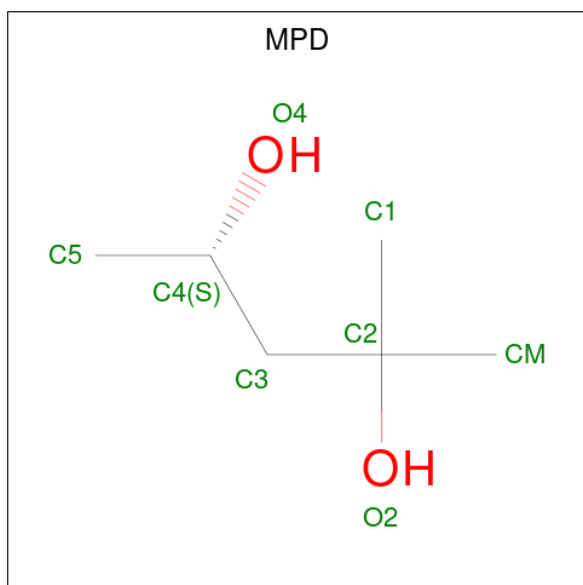
- Molecule 1 is a protein called Phosphotriesterase variant PTE-R6.

Mol	Chain	Residues	Atoms					ZeroOcc	AltConf	Trace
			Total	C	N	O	S			
1	A	329	Total 2678	C 1693	N 481	O 496	S 8	0	24	0
1	G	329	Total 2604	C 1642	N 461	O 493	S 8	0	16	0

- Molecule 2 is ZINC ION (three-letter code: ZN) (formula: Zn).

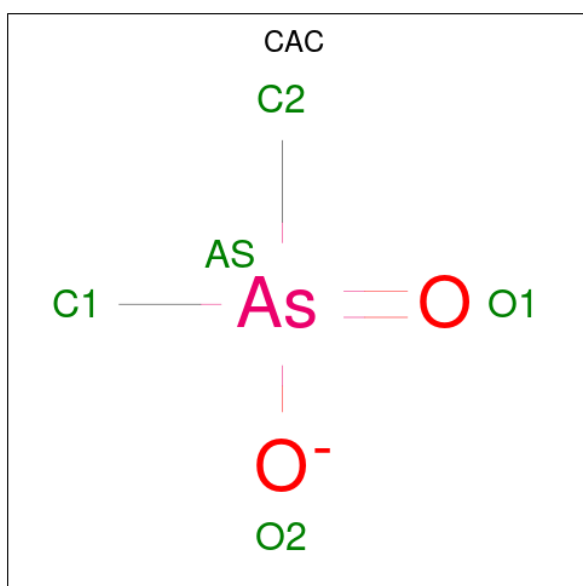
Mol	Chain	Residues	Atoms		ZeroOcc	AltConf
2	A	2	Total 2	Zn 2	0	0
2	G	2	Total 2	Zn 2	0	0

- Molecule 3 is (4S)-2-METHYL-2,4-PENTANEDIOL (three-letter code: MPD) (formula: C<sub>6</sub>H<sub>14</sub>O<sub>2</sub>).



Mol	Chain	Residues	Atoms			ZeroOcc	AltConf
3	A	1	Total	C	O	0	0
			8	6	2		
3	A	1	Total	C	O	0	0
			8	6	2		
3	A	1	Total	C	O	0	0
			8	6	2		
3	G	1	Total	C	O	0	0
			8	6	2		

- Molecule 4 is CACODYLATE ION (three-letter code: CAC) (formula:  $C_2H_6AsO_2$ ).



Mol	Chain	Residues	Atoms				ZeroOcc	AltConf
4	G	1	Total	As	C	O	0	0
			5	1	2	2		

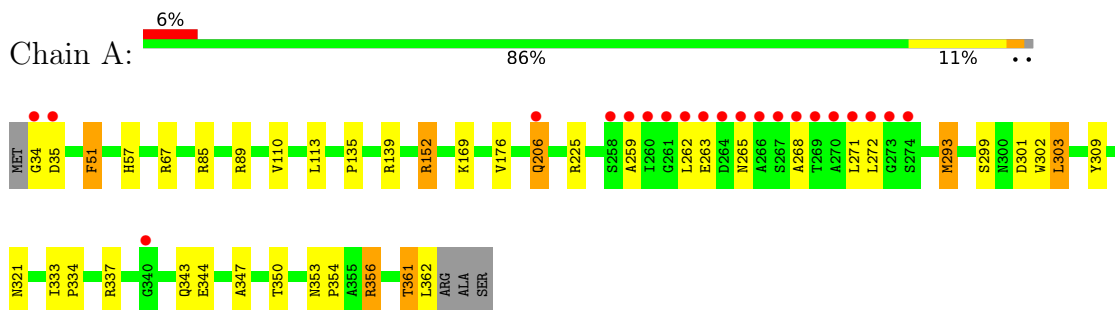
- Molecule 5 is water.

Mol	Chain	Residues	Atoms		ZeroOcc	AltConf
5	A	228	Total	O	0	1
			228	228		
5	G	240	Total	O	0	0
			240	240		

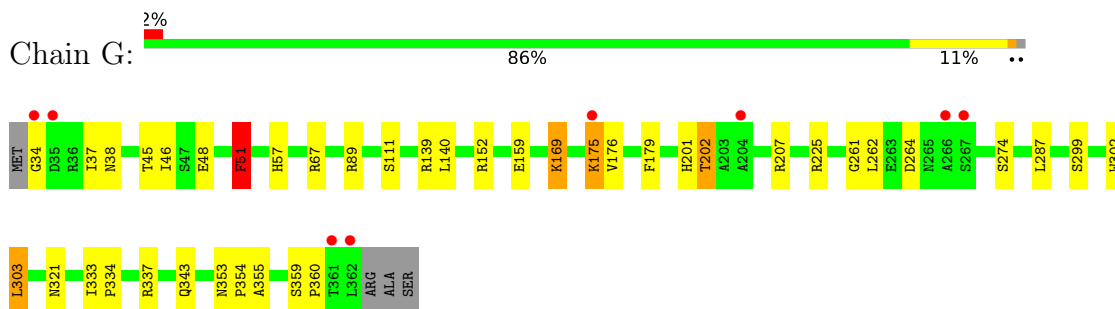
### 3 Residue-property plots [i](#)

These plots are drawn for all protein, RNA, DNA and oligosaccharide chains in the entry. The first graphic for a chain summarises the proportions of the various outlier classes displayed in the second graphic. The second graphic shows the sequence view annotated by issues in geometry and electron density. Residues are color-coded according to the number of geometric quality criteria for which they contain at least one outlier: green = 0, yellow = 1, orange = 2 and red = 3 or more. A red dot above a residue indicates a poor fit to the electron density ( $RSRZ > 2$ ). Stretches of 2 or more consecutive residues without any outlier are shown as a green connector. Residues present in the sample, but not in the model, are shown in grey.

- Molecule 1: Phosphotriesterase variant PTE-R6



- Molecule 1: Phosphotriesterase variant PTE-R6



## 4 Data and refinement statistics i

Property	Value	Source
Space group	P 21 21 2	Depositor
Cell constants a, b, c, $\alpha$ , $\beta$ , $\gamma$	85.89Å 86.30Å 88.58Å 90.00° 90.00° 90.00°	Depositor
Resolution (Å)	39.41 – 1.60 42.94 – 1.60	Depositor EDS
% Data completeness (in resolution range)	100.0 (39.41-1.60) 92.7 (42.94-1.60)	Depositor EDS
$R_{merge}$	0.12	Depositor
$R_{sym}$	(Not available)	Depositor
$\langle I/\sigma(I) \rangle$ <sup>1</sup>	1.97 (at 1.60Å)	Xtriage
Refinement program	PHENIX (phenix.refine: 1.9_1692)	Depositor
R, $R_{free}$	0.164 , 0.202 0.165 , 0.202	Depositor DCC
$R_{free}$ test set	4381 reflections (5.01%)	wwPDB-VP
Wilson B-factor (Å <sup>2</sup> )	12.8	Xtriage
Anisotropy	0.545	Xtriage
Bulk solvent $k_{sol}$ (e/Å <sup>3</sup> ), $B_{sol}$ (Å <sup>2</sup> )	0.34 , 52.2	EDS
L-test for twinning <sup>2</sup>	$\langle  L  \rangle = 0.48$ , $\langle L^2 \rangle = 0.31$	Xtriage
Estimated twinning fraction	0.017 for -h,l,k 0.022 for -l,-k,-h 0.018 for k,h,-l 0.008 for k,l,h 0.008 for l,h,k	Xtriage
$F_o, F_c$ correlation	0.96	EDS
Total number of atoms	5791	wwPDB-VP
Average B, all atoms (Å <sup>2</sup> )	20.0	wwPDB-VP

Xtriage's analysis on translational NCS is as follows: *The largest off-origin peak in the Patterson function is 4.75% of the height of the origin peak. No significant pseudotranslation is detected.*

<sup>1</sup>Intensities estimated from amplitudes.

<sup>2</sup>Theoretical values of  $\langle |L| \rangle$ ,  $\langle L^2 \rangle$  for acentric reflections are 0.5, 0.333 respectively for untwinned datasets, and 0.375, 0.2 for perfectly twinned datasets.

## 5 Model quality i

### 5.1 Standard geometry i

Bond lengths and bond angles in the following residue types are not validated in this section: CAC, MPD, ZN, KCX

The Z score for a bond length (or angle) is the number of standard deviations the observed value is removed from the expected value. A bond length (or angle) with  $|Z| > 5$  is considered an outlier worth inspection. RMSZ is the root-mean-square of all Z scores of the bond lengths (or angles).

Mol	Chain	Bond lengths		Bond angles	
		RMSZ	# Z  >5	RMSZ	# Z  >5
1	A	0.81	0/2726	0.89	8/3698 (0.2%)
1	G	0.84	0/2651	0.88	3/3599 (0.1%)
All	All	0.82	0/5377	0.89	11/7297 (0.2%)

There are no bond length outliers.

All (11) bond angle outliers are listed below:

Mol	Chain	Res	Type	Atoms	Z	Observed(°)	Ideal(°)
1	A	152	ARG	NE-CZ-NH2	8.14	124.37	120.30
1	G	225	ARG	NE-CZ-NH2	7.86	124.23	120.30
1	A	225	ARG	NE-CZ-NH1	-6.75	116.92	120.30
1	A	356[A]	ARG	NE-CZ-NH2	-6.04	117.28	120.30
1	A	356[B]	ARG	NE-CZ-NH2	-6.04	117.28	120.30
1	G	225	ARG	NE-CZ-NH1	-5.95	117.33	120.30
1	A	225	ARG	NE-CZ-NH2	5.75	123.17	120.30
1	G	51	PHE	CB-CG-CD1	5.19	124.44	120.80
1	A	139	ARG	NE-CZ-NH1	5.07	122.83	120.30
1	A	293[A]	MET	CG-SD-CE	-5.05	92.12	100.20
1	A	293[B]	MET	CG-SD-CE	-5.05	92.12	100.20

There are no chirality outliers.

There are no planarity outliers.

### 5.2 Too-close contacts i

In the following table, the Non-H and H(model) columns list the number of non-hydrogen atoms and hydrogen atoms in the chain respectively. The H(added) column lists the number of hydrogen atoms added and optimized by MolProbity. The Clashes column lists the number of clashes within the asymmetric unit, whereas Symm-Clashes lists symmetry-related clashes.



Mol	Chain	Non-H	H(model)	H(added)	Clashes	Symm-Clashes
1	A	2678	0	2727	40	0
1	G	2604	0	2628	29	0
2	A	2	0	0	0	0
2	G	2	0	0	0	0
3	A	24	0	42	24	0
3	G	8	0	14	3	0
4	G	5	0	0	1	0
5	A	228	0	0	9	0
5	G	240	0	0	5	1
All	All	5791	0	5411	77	1

The all-atom clashscore is defined as the number of clashes found per 1000 atoms (including hydrogen atoms). The all-atom clashscore for this structure is 7.

All (77) close contacts within the same asymmetric unit are listed below, sorted by their clash magnitude.

Atom-1	Atom-2	Interatomic distance (Å)	Clash overlap (Å)
3:A:2403:MPD:O2	3:A:2405:MPD:O4	1.76	1.02
1:A:350:THR:OG1	3:A:2405:MPD:O2	1.80	0.90
3:A:2403:MPD:H32	3:A:2405:MPD:H12	1.57	0.83
1:A:347:ALA:HB2	3:A:2403:MPD:HM2	1.63	0.80
1:A:343:GLN:HE22	3:A:2403:MPD:C3	1.96	0.78
1:A:301:ASP:OD2	5:A:2639:HOH:O	2.04	0.75
1:A:337[B]:ARG:NH2	5:A:2717:HOH:O	2.11	0.75
1:A:343:GLN:HE22	3:A:2403:MPD:H31	1.50	0.74
1:A:51:PHE:HD2	3:A:2405:MPD:H52	1.51	0.73
1:A:51:PHE:CE2	3:A:2405:MPD:HM1	2.25	0.72
1:G:202:THR:HG21	1:G:207:ARG:O	1.91	0.70
1:A:51:PHE:CD2	3:A:2405:MPD:H31	2.28	0.69
1:G:175:LYS:HD3	1:G:175:LYS:H	1.61	0.65
1:A:343:GLN:NE2	3:A:2403:MPD:H11	2.12	0.63
1:G:38[A]:ASN:OD1	5:G:626:HOH:O	2.14	0.63
1:A:343:GLN:NE2	3:A:2403:MPD:H31	2.14	0.62
1:A:347:ALA:CB	3:A:2403:MPD:HM2	2.29	0.62
1:G:34:GLY:N	1:G:359[B]:SER:HG	1.98	0.62
1:G:45:THR:OG1	1:G:48[A]:GLU:HG3	2.00	0.61
1:G:37[A]:ILE:HG22	1:G:360:PRO:HD3	1.82	0.61
1:G:46:ILE:HG23	1:G:355:ALA:HB1	1.82	0.61
1:G:175:LYS:H	1:G:175:LYS:CD	2.12	0.61
3:A:2403:MPD:HM1	3:A:2405:MPD:H32	1.82	0.60
1:A:350:THR:HG21	3:A:2405:MPD:HM3	1.84	0.59
1:A:89[A]:ARG:HG3	5:A:2514:HOH:O	2.02	0.58

*Continued on next page...*

*Continued from previous page...*

Atom-1	Atom-2	Interatomic distance (Å)	Clash overlap (Å)
3:A:2403:MPD:O4	3:A:2405:MPD:H11	2.04	0.56
1:G:343:GLN:HE22	3:G:404:MPD:C1	2.17	0.56
1:A:51:PHE:CD2	3:A:2405:MPD:H52	2.36	0.56
1:A:206[A]:GLN:O	1:A:206[A]:GLN:NE2	2.32	0.56
1:G:51:PHE:HB2	3:G:404:MPD:H52	1.90	0.53
3:A:2403:MPD:HM1	3:A:2405:MPD:O2	2.10	0.52
3:A:2403:MPD:H32	3:A:2405:MPD:C1	2.33	0.52
1:G:89[A]:ARG:NH1	5:G:717:HOH:O	2.42	0.51
1:G:333:ILE:HB	1:G:334:PRO:HD3	1.93	0.51
1:A:343:GLN:HE21	3:A:2403:MPD:H11	1.76	0.50
1:G:261:GLY:O	1:G:262:LEU:HD12	2.12	0.49
1:G:202:THR:HG22	5:G:737:HOH:O	2.12	0.49
1:G:343:GLN:NE2	3:G:404:MPD:H12	2.27	0.49
1:A:57:HIS:HB2	1:A:303:LEU:HB3	1.94	0.49
1:G:139:ARG:HA	1:G:179:PHE:CE1	2.48	0.49
1:A:89[A]:ARG:HD3	5:A:2649:HOH:O	2.13	0.48
1:A:259:ALA:HB1	1:A:262:LEU:HD13	1.95	0.48
1:G:67:ARG:NH2	1:G:111[A]:SER:OG	2.46	0.48
1:G:37[A]:ILE:O	1:G:37[A]:ILE:HG13	2.12	0.48
3:A:2403:MPD:HM1	3:A:2405:MPD:C2	2.44	0.47
1:A:51:PHE:CZ	3:A:2405:MPD:HM1	2.49	0.47
1:A:344:GLU:CD	1:A:344:GLU:H	2.17	0.47
3:A:2403:MPD:HM1	3:A:2405:MPD:C3	2.44	0.47
3:A:2403:MPD:HM1	3:A:2405:MPD:H12	1.97	0.47
3:A:2403:MPD:H4	3:A:2405:MPD:O4	2.14	0.47
1:G:302:TRP:CH2	1:G:321:ASN:HB3	2.51	0.46
1:A:110[B]:VAL:HA	1:A:113[B]:LEU:HG	1.98	0.46
1:A:333:ILE:HB	1:A:334:PRO:HD3	1.98	0.46
1:A:361:THR:HG23	5:A:2724:HOH:O	2.16	0.45
1:G:57:HIS:O	1:G:303:LEU:HA	2.17	0.45
1:A:67[A]:ARG:HG2	1:G:159:GLU:HG2	1.99	0.45
1:G:57:HIS:HB2	1:G:303:LEU:HB3	1.99	0.45
1:A:265:ASN:HB3	1:A:268:ALA:HB3	2.00	0.44
1:G:353:ASN:HB2	1:G:354:PRO:HD3	1.99	0.44
1:A:57:HIS:O	1:A:303:LEU:HA	2.16	0.44
1:A:259:ALA:HB1	1:A:262:LEU:HB2	1.99	0.44
1:A:302:TRP:CH2	1:A:321:ASN:HB3	2.53	0.44
1:A:34:GLY:N	5:A:2711:HOH:O	2.50	0.44
1:G:337:ARG:HG3	5:G:734:HOH:O	2.17	0.44
1:A:259:ALA:HB2	1:A:272:LEU:HD13	2.00	0.43
1:G:287:LEU:HD23	1:G:287:LEU:HA	1.83	0.43

*Continued on next page...*

Continued from previous page...

Atom-1	Atom-2	Interatomic distance (Å)	Clash overlap (Å)
1:A:309:TYR:CA	1:G:140[A]:LEU:HD23	2.50	0.42
1:A:362[A]:LEU:HD23	5:A:2537:HOH:O	2.18	0.42
1:A:353:ASN:OD1	1:A:356[A]:ARG:NH2	2.53	0.42
1:G:201:HIS:CE1	4:G:401:CAC:O2	2.73	0.42
1:A:135[A]:PRO:CG	5:G:628:HOH:O	2.67	0.41
1:A:353:ASN:HB2	1:A:354:PRO:HD3	2.02	0.41
1:A:34:GLY:HA2	5:A:2723:HOH:O	2.21	0.41
1:A:85:ARG:O	1:A:89[B]:ARG:HG3	2.21	0.41
1:A:89[A]:ARG:CD	5:A:2649:HOH:O	2.68	0.41
1:G:169:KCX:OQ1	1:G:201:HIS:HB2	2.21	0.40
1:G:264:ASP:OD1	1:G:264:ASP:N	2.52	0.40

All (1) symmetry-related close contacts are listed below. The label for Atom-2 includes the symmetry operator and encoded unit-cell translations to be applied.

Atom-1	Atom-2	Interatomic distance (Å)	Clash overlap (Å)
5:G:541:HOH:O	5:G:543:HOH:O[4_454]	2.09	0.11

## 5.3 Torsion angles [i](#)

### 5.3.1 Protein backbone [i](#)

In the following table, the Percentiles column shows the percent Ramachandran outliers of the chain as a percentile score with respect to all X-ray entries followed by that with respect to entries of similar resolution.

The Analysed column shows the number of residues for which the backbone conformation was analysed, and the total number of residues.

Mol	Chain	Analysed	Favoured	Allowed	Outliers	Percentiles
1	A	349/333 (105%)	333 (95%)	14 (4%)	2 (1%)	25   8
1	G	341/333 (102%)	330 (97%)	10 (3%)	1 (0%)	41   21
All	All	690/666 (104%)	663 (96%)	24 (4%)	3 (0%)	29   15

All (3) Ramachandran outliers are listed below:

Mol	Chain	Res	Type
1	A	35	ASP
1	A	176	VAL

Continued on next page...

*Continued from previous page...*

Mol	Chain	Res	Type
1	G	176	VAL

### 5.3.2 Protein sidechains [i](#)

In the following table, the Percentiles column shows the percent sidechain outliers of the chain as a percentile score with respect to all X-ray entries followed by that with respect to entries of similar resolution.

The Analysed column shows the number of residues for which the sidechain conformation was analysed, and the total number of residues.

Mol	Chain	Analysed	Rotameric	Outliers	Percentiles	
1	A	285/266 (107%)	274 (96%)	11 (4%)	32	10
1	G	278/266 (104%)	271 (98%)	7 (2%)	47	22
All	All	563/532 (106%)	545 (97%)	18 (3%)	41	15

All (18) residues with a non-rotameric sidechain are listed below:

Mol	Chain	Res	Type
1	A	51	PHE
1	A	152	ARG
1	A	206[A]	GLN
1	A	206[B]	GLN
1	A	263	GLU
1	A	271	LEU
1	A	293[A]	MET
1	A	293[B]	MET
1	A	299	SER
1	A	303	LEU
1	A	361	THR
1	G	51	PHE
1	G	152	ARG
1	G	175	LYS
1	G	202	THR
1	G	274	SER
1	G	299	SER
1	G	303	LEU

Sometimes sidechains can be flipped to improve hydrogen bonding and reduce clashes. All (2) such sidechains are listed below:

Mol	Chain	Res	Type
1	G	290	GLN
1	G	343	GLN

### 5.3.3 RNA [i](#)

There are no RNA molecules in this entry.

## 5.4 Non-standard residues in protein, DNA, RNA chains [i](#)

2 non-standard protein/DNA/RNA residues are modelled in this entry.

In the following table, the Counts columns list the number of bonds (or angles) for which Mogul statistics could be retrieved, the number of bonds (or angles) that are observed in the model and the number of bonds (or angles) that are defined in the Chemical Component Dictionary. The Link column lists molecule types, if any, to which the group is linked. The Z score for a bond length (or angle) is the number of standard deviations the observed value is removed from the expected value. A bond length (or angle) with  $|Z| > 2$  is considered an outlier worth inspection. RMSZ is the root-mean-square of all Z scores of the bond lengths (or angles).

Mol	Type	Chain	Res	Link	Bond lengths			Bond angles		
					Counts	RMSZ	# Z  > 2	Counts	RMSZ	# Z  > 2
1	KCX	A	169	2,1	9,11,12	1.50	2 (22%)	5,12,14	2.28	1 (20%)
1	KCX	G	169	2,1	9,11,12	1.46	2 (22%)	5,12,14	1.53	1 (20%)

In the following table, the Chirals column lists the number of chiral outliers, the number of chiral centers analysed, the number of these observed in the model and the number defined in the Chemical Component Dictionary. Similar counts are reported in the Torsion and Rings columns. '-' means no outliers of that kind were identified.

Mol	Type	Chain	Res	Link	Chirals	Torsions	Rings
1	KCX	A	169	2,1	-	0/9/10/12	-
1	KCX	G	169	2,1	-	0/9/10/12	-

All (4) bond length outliers are listed below:

Mol	Chain	Res	Type	Atoms	Z	Observed(Å)	Ideal(Å)
1	A	169	KCX	CE-NZ	2.96	1.52	1.46
1	G	169	KCX	OQ1-CX	2.90	1.27	1.21
1	A	169	KCX	CB-CA	2.74	1.57	1.53
1	G	169	KCX	CE-NZ	2.26	1.51	1.46

All (2) bond angle outliers are listed below:

Mol	Chain	Res	Type	Atoms	Z	Observed(°)	Ideal(°)
1	A	169	KCX	OQ1-CX-NZ	-4.63	117.79	124.96
1	G	169	KCX	OQ1-CX-NZ	-2.80	120.62	124.96

There are no chirality outliers.

There are no torsion outliers.

There are no ring outliers.

1 monomer is involved in 1 short contact:

Mol	Chain	Res	Type	Clashes	Symm-Clashes
1	G	169	KCX	1	0

## 5.5 Carbohydrates [i](#)

There are no monosaccharides in this entry.

## 5.6 Ligand geometry [i](#)

Of 9 ligands modelled in this entry, 4 are monoatomic - leaving 5 for Mogul analysis.

In the following table, the Counts columns list the number of bonds (or angles) for which Mogul statistics could be retrieved, the number of bonds (or angles) that are observed in the model and the number of bonds (or angles) that are defined in the Chemical Component Dictionary. The Link column lists molecule types, if any, to which the group is linked. The Z score for a bond length (or angle) is the number of standard deviations the observed value is removed from the expected value. A bond length (or angle) with  $|Z| > 2$  is considered an outlier worth inspection. RMSZ is the root-mean-square of all Z scores of the bond lengths (or angles).

Mol	Type	Chain	Res	Link	Bond lengths			Bond angles		
					Counts	RMSZ	$\# Z  > 2$	Counts	RMSZ	$\# Z  > 2$
3	MPD	A	2403	-	7,7,7	0.64	0	9,10,10	1.49	1 (11%)
3	MPD	A	2404	-	7,7,7	0.31	0	9,10,10	0.94	0
3	MPD	A	2405	-	7,7,7	0.58	0	9,10,10	3.41	5 (55%)
4	CAC	G	401	2	0,4,4	-	-	0,6,6	-	-
3	MPD	G	404	-	7,7,7	0.31	0	9,10,10	1.17	1 (11%)

In the following table, the Chirals column lists the number of chiral outliers, the number of chiral centers analysed, the number of these observed in the model and the number defined in the Chemical Component Dictionary. Similar counts are reported in the Torsion and Rings columns. '-' means no outliers of that kind were identified.

Mol	Type	Chain	Res	Link	Chirals	Torsions	Rings
3	MPD	A	2404	-	-	0/5/5/5	-
3	MPD	A	2403	-	-	5/5/5/5	-
3	MPD	A	2405	-	-	2/5/5/5	-
3	MPD	G	404	-	-	0/5/5/5	-

There are no bond length outliers.

All (7) bond angle outliers are listed below:

Mol	Chain	Res	Type	Atoms	Z	Observed(°)	Ideal(°)
3	A	2405	MPD	C1-C2-C3	5.30	134.64	109.96
3	A	2405	MPD	O2-C2-C3	-4.77	91.88	109.80
3	A	2405	MPD	CM-C2-C1	-4.67	100.84	110.57
3	A	2405	MPD	O4-C4-C5	-4.23	91.06	109.38
3	A	2403	MPD	O2-C2-CM	-3.33	97.39	108.08
3	G	404	MPD	CM-C2-C1	-2.77	104.80	110.57
3	A	2405	MPD	O2-C2-C1	-2.70	99.40	108.08

There are no chirality outliers.

All (7) torsion outliers are listed below:

Mol	Chain	Res	Type	Atoms
3	A	2403	MPD	O2-C2-C3-C4
3	A	2403	MPD	C2-C3-C4-C5
3	A	2403	MPD	C2-C3-C4-O4
3	A	2403	MPD	C1-C2-C3-C4
3	A	2403	MPD	CM-C2-C3-C4
3	A	2405	MPD	O2-C2-C3-C4
3	A	2405	MPD	C2-C3-C4-O4

There are no ring outliers.

4 monomers are involved in 28 short contacts:

Mol	Chain	Res	Type	Clashes	Symm-Clashes
3	A	2403	MPD	17	0
3	A	2405	MPD	17	0
4	G	401	CAC	1	0
3	G	404	MPD	3	0

## 5.7 Other polymers [i](#)

There are no such residues in this entry.

## 5.8 Polymer linkage issues [i](#)

There are no chain breaks in this entry.



## 6 Fit of model and data

### 6.1 Protein, DNA and RNA chains

In the following table, the column labelled ‘#RSRZ > 2’ contains the number (and percentage) of RSRZ outliers, followed by percent RSRZ outliers for the chain as percentile scores relative to all X-ray entries and entries of similar resolution. The OWAB column contains the minimum, median, 95<sup>th</sup> percentile and maximum values of the occupancy-weighted average B-factor per residue. The column labelled ‘Q < 0.9’ lists the number of (and percentage) of residues with an average occupancy less than 0.9.

Mol	Chain	Analysed	<RSRZ>	#RSRZ>2	OWAB(Å <sup>2</sup> )	Q<0.9
1	A	328/333 (98%)	0.07	21 (6%) 19 17	9, 15, 54, 108	0
1	G	328/333 (98%)	-0.33	8 (2%) 59 56	11, 17, 36, 62	0
All	All	656/666 (98%)	-0.13	29 (4%) 34 31	9, 16, 39, 108	0

All (29) RSRZ outliers are listed below:

Mol	Chain	Res	Type	RSRZ
1	A	260	ILE	27.3
1	A	261	GLY	14.6
1	A	266	ALA	14.1
1	A	265	ASN	11.3
1	A	271	LEU	11.2
1	A	262	LEU	10.3
1	A	264	ASP	9.0
1	A	259	ALA	8.9
1	A	268	ALA	8.2
1	A	273	GLY	7.5
1	A	206[A]	GLN	5.5
1	A	270	ALA	5.2
1	A	34	GLY	4.4
1	G	362	LEU	4.2
1	A	267	SER	3.9
1	A	272	LEU	3.6
1	A	274	SER	3.6
1	A	269	THR	3.0
1	A	263	GLU	2.8
1	A	258	SER	2.8
1	A	35	ASP	2.7
1	G	175	LYS	2.6
1	G	35	ASP	2.5
1	G	34	GLY	2.4

*Continued on next page...*

Continued from previous page...

Mol	Chain	Res	Type	RSRZ
1	G	204	ALA	2.3
1	A	340	GLY	2.1
1	G	361	THR	2.0
1	G	266	ALA	2.0
1	G	267	SER	2.0

## 6.2 Non-standard residues in protein, DNA, RNA chains [i](#)

In the following table, the Atoms column lists the number of modelled atoms in the group and the number defined in the chemical component dictionary. The B-factors column lists the minimum, median, 95<sup>th</sup> percentile and maximum values of B factors of atoms in the group. The column labelled 'Q< 0.9' lists the number of atoms with occupancy less than 0.9.

Mol	Type	Chain	Res	Atoms	RSCC	RSR	B-factors(Å <sup>2</sup> )	Q<0.9
1	KCX	G	169	12/13	0.95	0.08	10,11,14,16	0
1	KCX	A	169	12/13	0.97	0.08	8,11,12,14	0

## 6.3 Carbohydrates [i](#)

There are no monosaccharides in this entry.

## 6.4 Ligands [i](#)

In the following table, the Atoms column lists the number of modelled atoms in the group and the number defined in the chemical component dictionary. The B-factors column lists the minimum, median, 95<sup>th</sup> percentile and maximum values of B factors of atoms in the group. The column labelled 'Q< 0.9' lists the number of atoms with occupancy less than 0.9.

Mol	Type	Chain	Res	Atoms	RSCC	RSR	B-factors(Å <sup>2</sup> )	Q<0.9
3	MPD	A	2403	8/8	0.09	0.73	50,59,65,70	0
3	MPD	A	2405	8/8	0.49	0.83	37,56,62,65	0
3	MPD	G	404	8/8	0.76	0.24	35,43,45,47	0
4	CAC	G	401	5/5	0.83	0.23	10,24,47,57	5
3	MPD	A	2404	8/8	0.95	0.08	20,27,33,36	0
2	ZN	A	2402	1/1	1.00	0.04	13,13,13,13	0
2	ZN	G	402	1/1	1.00	0.05	13,13,13,13	0
2	ZN	G	403	1/1	1.00	0.04	16,16,16,16	0
2	ZN	A	2401	1/1	1.00	0.05	10,10,10,10	0

## 6.5 Other polymers [i](#)

There are no such residues in this entry.