



# Full wwPDB X-ray Structure Validation Report ⓘ

Nov 22, 2023 – 07:48 PM JST

PDB ID : 7XBI  
Title : The crystal structure of human TrkA kinase bound to the inhibitor  
Authors : Wu, C.Y.; Wang, G.; Ouyang, L.  
Deposited on : 2022-03-21  
Resolution : 2.16 Å(reported)

This is a Full wwPDB X-ray Structure Validation Report for a publicly released PDB entry.

We welcome your comments at [validation@mail.wwpdb.org](mailto:validation@mail.wwpdb.org)

A user guide is available at

<https://www.wwpdb.org/validation/2017/XrayValidationReportHelp>

with specific help available everywhere you see the ⓘ symbol.

The types of validation reports are described at

<http://www.wwpdb.org/validation/2017/FAQs#types>.

---

The following versions of software and data (see [references ⓘ](#)) were used in the production of this report:

MolProbity : 4.02b-467  
Mogul : 1.8.5 (274361), CSD as541be (2020)  
Xtriage (Phenix) : 1.13  
EDS : 2.36  
buster-report : 1.1.7 (2018)  
Percentile statistics : 20191225.v01 (using entries in the PDB archive December 25th 2019)  
Refmac : 5.8.0158  
CCP4 : 7.0.044 (Gargrove)  
Ideal geometry (proteins) : Engh & Huber (2001)  
Ideal geometry (DNA, RNA) : Parkinson et al. (1996)  
Validation Pipeline (wwPDB-VP) : 2.36

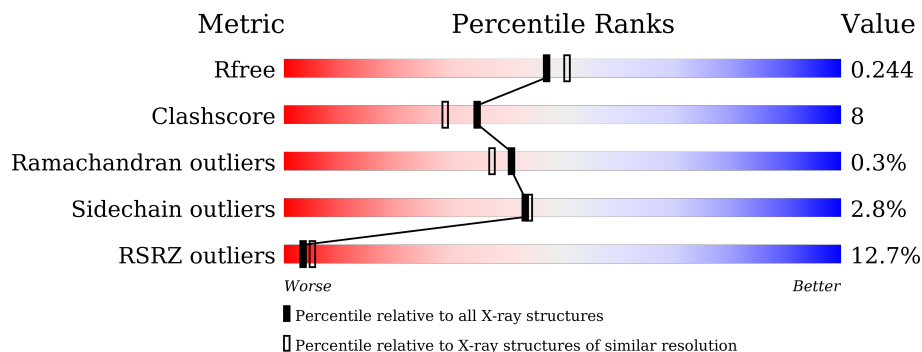
# 1 Overall quality at a glance

The following experimental techniques were used to determine the structure:

*X-RAY DIFFRACTION*

The reported resolution of this entry is 2.16 Å.

Percentile scores (ranging between 0-100) for global validation metrics of the entry are shown in the following graphic. The table shows the number of entries on which the scores are based.



Metric	Whole archive (#Entries)	Similar resolution (#Entries, resolution range(Å))
$R_{free}$	130704	1479 (2.16-2.16)
Clashscore	141614	1585 (2.16-2.16)
Ramachandran outliers	138981	1560 (2.16-2.16)
Sidechain outliers	138945	1559 (2.16-2.16)
RSRZ outliers	127900	1456 (2.16-2.16)

The table below summarises the geometric issues observed across the polymeric chains and their fit to the electron density. The red, orange, yellow and green segments of the lower bar indicate the fraction of residues that contain outliers for  $\geq 3$ , 2, 1 and 0 types of geometric quality criteria respectively. A grey segment represents the fraction of residues that are not modelled. The numeric value for each fraction is indicated below the corresponding segment, with a dot representing fractions  $\leq 5\%$ . The upper red bar (where present) indicates the fraction of residues that have poor fit to the electron density. The numeric value is given above the bar.

Mol	Chain	Length	Quality of chain
1	A	311	

## 2 Entry composition [i](#)

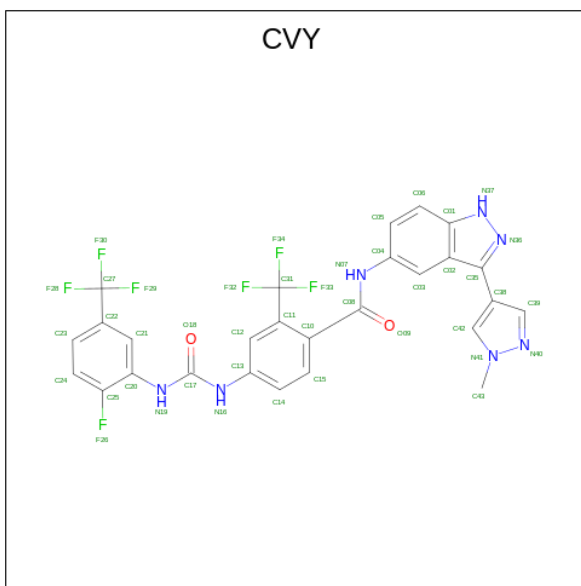
There are 4 unique types of molecules in this entry. The entry contains 4945 atoms, of which 2418 are hydrogens and 0 are deuteriums.

In the tables below, the ZeroOcc column contains the number of atoms modelled with zero occupancy, the AltConf column contains the number of residues with at least one atom in alternate conformation and the Trace column contains the number of residues modelled with at most 2 atoms.

- Molecule 1 is a protein called High affinity nerve growth factor receptor.

Mol	Chain	Residues	Atoms					ZeroOcc	AltConf	Trace	
			Total	C	H	N	O				S
1	A	299	4811	1542	2400	432	421	16	60	4	0

- Molecule 2 is 4-[[2-fluoranyl-5-(trifluoromethyl)phenyl]carbamoylamino]-{N}-[3-(1-methylpyrazol-4-yl)-1 {H}-indazol-5-yl]-2-(trifluoromethyl)benzamide (three-letter code: CVY) (formula: C<sub>27</sub>H<sub>18</sub>F<sub>7</sub>N<sub>7</sub>O<sub>2</sub>) (labeled as "Ligand of Interest" by depositor).



Mol	Chain	Residues	Atoms					ZeroOcc	AltConf	
			Total	C	F	H	N			O
2	A	1	61	27	7	18	7	2	0	0

- Molecule 3 is CHLORIDE ION (three-letter code: CL) (formula: Cl).

Mol	Chain	Residues	Atoms	ZeroOcc	AltConf
3	A	1	Total 1 Cl 1	0	0

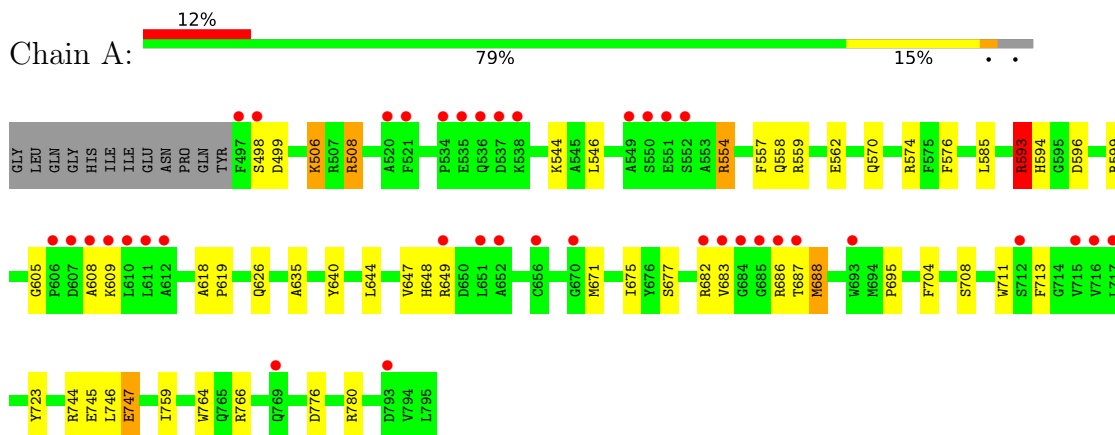
- Molecule 4 is water.

<b>Mol</b>	<b>Chain</b>	<b>Residues</b>	<b>Atoms</b>		<b>ZeroOcc</b>	<b>AltConf</b>
4	A	72	Total	O	0	0
			72	72		

### 3 Residue-property plots [i](#)

These plots are drawn for all protein, RNA, DNA and oligosaccharide chains in the entry. The first graphic for a chain summarises the proportions of the various outlier classes displayed in the second graphic. The second graphic shows the sequence view annotated by issues in geometry and electron density. Residues are color-coded according to the number of geometric quality criteria for which they contain at least one outlier: green = 0, yellow = 1, orange = 2 and red = 3 or more. A red dot above a residue indicates a poor fit to the electron density ( $RSRZ > 2$ ). Stretches of 2 or more consecutive residues without any outlier are shown as a green connector. Residues present in the sample, but not in the model, are shown in grey.

- Molecule 1: High affinity nerve growth factor receptor



## 4 Data and refinement statistics i

Property	Value	Source
Space group	P 31 1 2	Depositor
Cell constants a, b, c, $\alpha$ , $\beta$ , $\gamma$	52.01Å 52.01Å 229.51Å 90.00° 90.00° 120.00°	Depositor
Resolution (Å)	29.16 – 2.16 29.16 – 2.16	Depositor EDS
% Data completeness (in resolution range)	99.4 (29.16-2.16) 99.4 (29.16-2.16)	Depositor EDS
$R_{merge}$	0.17	Depositor
$R_{sym}$	(Not available)	Depositor
$\langle I/\sigma(I) \rangle$ <sup>1</sup>	1.87 (at 2.16Å)	Xtrriage
Refinement program	PHENIX 1.20_4459	Depositor
R, $R_{free}$	0.188 , 0.246 0.186 , 0.244	Depositor DCC
$R_{free}$ test set	1960 reflections (10.08%)	wwPDB-VP
Wilson B-factor (Å <sup>2</sup> )	35.6	Xtrriage
Anisotropy	0.196	Xtrriage
Bulk solvent $k_{sol}$ (e/Å <sup>3</sup> ), $B_{sol}$ (Å <sup>2</sup> )	0.46 , 52.0	EDS
L-test for twinning <sup>2</sup>	$\langle  L  \rangle = 0.51$ , $\langle L^2 \rangle = 0.34$	Xtrriage
Estimated twinning fraction	0.059 for -h,-k,l	Xtrriage
$F_o, F_c$ correlation	0.95	EDS
Total number of atoms	4945	wwPDB-VP
Average B, all atoms (Å <sup>2</sup> )	48.0	wwPDB-VP

Xtrriage's analysis on translational NCS is as follows: *The largest off-origin peak in the Patterson function is 4.94% of the height of the origin peak. No significant pseudotranslation is detected.*

<sup>1</sup>Intensities estimated from amplitudes.

<sup>2</sup>Theoretical values of  $\langle |L| \rangle$ ,  $\langle L^2 \rangle$  for acentric reflections are 0.5, 0.333 respectively for untwinned datasets, and 0.375, 0.2 for perfectly twinned datasets.

## 5 Model quality [i](#)

### 5.1 Standard geometry [i](#)

Bond lengths and bond angles in the following residue types are not validated in this section: CL, CVY

The Z score for a bond length (or angle) is the number of standard deviations the observed value is removed from the expected value. A bond length (or angle) with  $|Z| > 5$  is considered an outlier worth inspection. RMSZ is the root-mean-square of all Z scores of the bond lengths (or angles).

Mol	Chain	Bond lengths		Bond angles	
		RMSZ	$\# Z  > 5$	RMSZ	$\# Z  > 5$
1	A	0.66	1/2487 (0.0%)	0.80	1/3367 (0.0%)

Chiral center outliers are detected by calculating the chiral volume of a chiral center and verifying if the center is modelled as a planar moiety or with the opposite hand. A planarity outlier is detected by checking planarity of atoms in a peptide group, atoms in a mainchain group or atoms of a sidechain that are expected to be planar.

Mol	Chain	#Chirality outliers	#Planarity outliers
1	A	0	1

All (1) bond length outliers are listed below:

Mol	Chain	Res	Type	Atoms	Z	Observed(Å)	Ideal(Å)
1	A	747	GLU	CB-CG	7.11	1.65	1.52

All (1) bond angle outliers are listed below:

Mol	Chain	Res	Type	Atoms	Z	Observed(°)	Ideal(°)
1	A	593	ARG	CG-CD-NE	-5.73	99.77	111.80

There are no chirality outliers.

All (1) planarity outliers are listed below:

Mol	Chain	Res	Type	Group
1	A	593	ARG	Sidechain

## 5.2 Too-close contacts

In the following table, the Non-H and H(model) columns list the number of non-hydrogen atoms and hydrogen atoms in the chain respectively. The H(added) column lists the number of hydrogen atoms added and optimized by MolProbity. The Clashes column lists the number of clashes within the asymmetric unit, whereas Symm-Clashes lists symmetry-related clashes.

Mol	Chain	Non-H	H(model)	H(added)	Clashes	Symm-Clashes
1	A	2411	2400	2387	40	0
2	A	43	18	0	1	0
3	A	1	0	0	0	0
4	A	72	0	0	4	0
All	All	2527	2418	2387	40	0

The all-atom clashscore is defined as the number of clashes found per 1000 atoms (including hydrogen atoms). The all-atom clashscore for this structure is 8.

All (40) close contacts within the same asymmetric unit are listed below, sorted by their clash magnitude.

Atom-1	Atom-2	Interatomic distance (Å)	Clash overlap (Å)
1:A:745:GLU:OE2	4:A:901:HOH:O	1.90	0.90
1:A:626:GLN:NE2	4:A:902:HOH:O	2.14	0.81
1:A:766:ARG:NH1	4:A:904:HOH:O	2.15	0.67
1:A:570:GLN:O	4:A:903:HOH:O	2.14	0.64
1:A:747:GLU:OE1	1:A:747:GLU:N	2.23	0.64
1:A:508:ARG:HD2	1:A:508:ARG:H	1.65	0.62
1:A:506:LYS:HB3	1:A:508:ARG:HD2	1.83	0.59
1:A:554:ARG:O	1:A:558:GLN:HG3	2.03	0.59
1:A:704[B]:PHE:CD1	1:A:708:SER:OG	2.56	0.58
1:A:747:GLU:H	1:A:747:GLU:CD	1.99	0.58
1:A:544:LYS:HD3	2:A:801:CVY:C31	2.35	0.56
1:A:508:ARG:H	1:A:508:ARG:CD	2.20	0.54
1:A:640:TYR:CZ	1:A:644:LEU:HD11	2.43	0.54
1:A:618:ALA:HB1	1:A:619:PRO:HD2	1.90	0.53
1:A:608:ALA:O	1:A:609:LYS:HD2	2.09	0.52
1:A:605:GLY:HA2	1:A:723:TYR:CD1	2.46	0.51
1:A:683:VAL:HG23	1:A:687:THR:HB	1.91	0.51
1:A:546:LEU:HD22	1:A:585:LEU:HD12	1.93	0.50
1:A:746:LEU:HA	1:A:747:GLU:OE1	2.12	0.50
1:A:506:LYS:HE2	1:A:508:ARG:HD3	1.94	0.49
1:A:648:HIS:O	1:A:649[A]:ARG:HB2	2.13	0.49
1:A:776:ASP:HB3	1:A:780:ARG:NH2	2.27	0.49
1:A:677:SER:HB2	1:A:682:ARG:HH22	1.78	0.49

*Continued on next page...*



Continued from previous page...

Atom-1	Atom-2	Interatomic distance (Å)	Clash overlap (Å)
1:A:682:ARG:NH1	1:A:688:MET:SD	2.88	0.47
1:A:599:ARG:HH22	1:A:675:ILE:HG21	1.80	0.46
1:A:635:ALA:HB2	1:A:713:PHE:CZ	2.52	0.45
1:A:677:SER:HB2	1:A:682:ARG:NH2	2.32	0.45
1:A:671:MET:HB3	1:A:688:MET:HE2	1.99	0.45
1:A:593:ARG:HG2	1:A:594:HIS:N	2.32	0.44
1:A:671:MET:HB3	1:A:688:MET:CE	2.49	0.43
1:A:759:ILE:HD11	1:A:780:ARG:HB3	2.01	0.43
1:A:695:PRO:HB3	1:A:711:TRP:CG	2.54	0.42
1:A:711:TRP:CE3	1:A:764:TRP:HA	2.54	0.42
1:A:557:PHE:C	1:A:557:PHE:CD1	2.93	0.42
1:A:683:VAL:CG2	1:A:687:THR:HB	2.49	0.42
1:A:686:ARG:NE	1:A:686:ARG:HA	2.34	0.41
1:A:766:ARG:HH11	1:A:766:ARG:HG3	1.85	0.41
1:A:574:ARG:HD2	1:A:576:PHE:CE1	2.55	0.41
1:A:498:SER:OG	1:A:562:GLU:CD	2.59	0.41
1:A:647:VAL:CG1	1:A:704[B]:PHE:HD1	2.34	0.41

There are no symmetry-related clashes.

## 5.3 Torsion angles [i](#)

### 5.3.1 Protein backbone [i](#)

In the following table, the Percentiles column shows the percent Ramachandran outliers of the chain as a percentile score with respect to all X-ray entries followed by that with respect to entries of similar resolution.

The Analysed column shows the number of residues for which the backbone conformation was analysed, and the total number of residues.

Mol	Chain	Analysed	Favoured	Allowed	Outliers	Percentiles
1	A	301/311 (97%)	286 (95%)	14 (5%)	1 (0%)	41 37

All (1) Ramachandran outliers are listed below:

Mol	Chain	Res	Type
1	A	499	ASP

### 5.3.2 Protein sidechains [i](#)

In the following table, the Percentiles column shows the percent sidechain outliers of the chain as a percentile score with respect to all X-ray entries followed by that with respect to entries of similar resolution.

The Analysed column shows the number of residues for which the sidechain conformation was analysed, and the total number of residues.

Mol	Chain	Analysed	Rotameric	Outliers	Percentiles
1	A	255/261 (98%)	248 (97%)	7 (3%)	44   46

All (7) residues with a non-rotameric sidechain are listed below:

Mol	Chain	Res	Type
1	A	506	LYS
1	A	508	ARG
1	A	554	ARG
1	A	559	ARG
1	A	596	ASP
1	A	688	MET
1	A	744	ARG

Sometimes sidechains can be flipped to improve hydrogen bonding and reduce clashes. There are no such sidechains identified.

### 5.3.3 RNA [i](#)

There are no RNA molecules in this entry.

## 5.4 Non-standard residues in protein, DNA, RNA chains [i](#)

There are no non-standard protein/DNA/RNA residues in this entry.

### 5.5 Carbohydrates [i](#)

There are no monosaccharides in this entry.

### 5.6 Ligand geometry [i](#)

Of 2 ligands modelled in this entry, 1 is monoatomic - leaving 1 for Mogul analysis.

In the following table, the Counts columns list the number of bonds (or angles) for which Mogul statistics could be retrieved, the number of bonds (or angles) that are observed in the model and the number of bonds (or angles) that are defined in the Chemical Component Dictionary. The Link column lists molecule types, if any, to which the group is linked. The Z score for a bond length (or angle) is the number of standard deviations the observed value is removed from the expected value. A bond length (or angle) with  $|Z| > 2$  is considered an outlier worth inspection. RMSZ is the root-mean-square of all Z scores of the bond lengths (or angles).

Mol	Type	Chain	Res	Link	Bond lengths			Bond angles		
					Counts	RMSZ	# Z  > 2	Counts	RMSZ	# Z  > 2
2	CVY	A	801	-	42,47,47	1.71	6 (14%)	60,71,71	2.26	19 (31%)

In the following table, the Chirals column lists the number of chiral outliers, the number of chiral centers analysed, the number of these observed in the model and the number defined in the Chemical Component Dictionary. Similar counts are reported in the Torsion and Rings columns. '-' means no outliers of that kind were identified.

Mol	Type	Chain	Res	Link	Chirals	Torsions	Rings
2	CVY	A	801	-	-	2/28/32/32	0/5/5/5

All (6) bond length outliers are listed below:

Mol	Chain	Res	Type	Atoms	Z	Observed(Å)	Ideal(Å)
2	A	801	CVY	C38-C35	-5.91	1.41	1.49
2	A	801	CVY	C08-N07	3.69	1.45	1.35
2	A	801	CVY	C17-N19	3.16	1.44	1.37
2	A	801	CVY	C17-N16	2.94	1.43	1.37
2	A	801	CVY	O18-C17	-2.46	1.18	1.23
2	A	801	CVY	C04-N07	2.33	1.46	1.41

All (19) bond angle outliers are listed below:

Mol	Chain	Res	Type	Atoms	Z	Observed(°)	Ideal(°)
2	A	801	CVY	C10-C08-N07	6.13	127.78	116.06
2	A	801	CVY	C39-N40-N41	4.70	109.13	104.23
2	A	801	CVY	F33-C31-C11	-4.63	104.64	112.70
2	A	801	CVY	C43-N41-N40	4.54	125.84	120.50
2	A	801	CVY	O09-C08-C10	-4.52	112.75	121.01
2	A	801	CVY	C42-N41-N40	-4.38	107.74	111.56
2	A	801	CVY	C11-C10-C08	-3.53	117.51	122.80
2	A	801	CVY	C38-C35-N36	3.49	126.76	120.78
2	A	801	CVY	F26-C25-C20	3.21	121.53	117.50
2	A	801	CVY	C21-C20-C25	3.20	120.69	117.75
2	A	801	CVY	F30-C27-C22	-3.04	106.26	112.93

*Continued on next page...*

*Continued from previous page...*

Mol	Chain	Res	Type	Atoms	Z	Observed(°)	Ideal(°)
2	A	801	CVY	C03-C04-N07	-2.98	113.20	123.13
2	A	801	CVY	C12-C13-N16	-2.85	110.89	120.18
2	A	801	CVY	F28-C27-C22	-2.79	106.80	112.93
2	A	801	CVY	C24-C25-C20	-2.78	120.08	123.24
2	A	801	CVY	C13-N16-C17	-2.47	121.55	126.61
2	A	801	CVY	C23-C22-C21	2.44	122.46	117.76
2	A	801	CVY	C21-C22-C27	-2.37	116.37	119.58
2	A	801	CVY	O18-C17-N19	2.15	127.26	123.62

There are no chirality outliers.

All (2) torsion outliers are listed below:

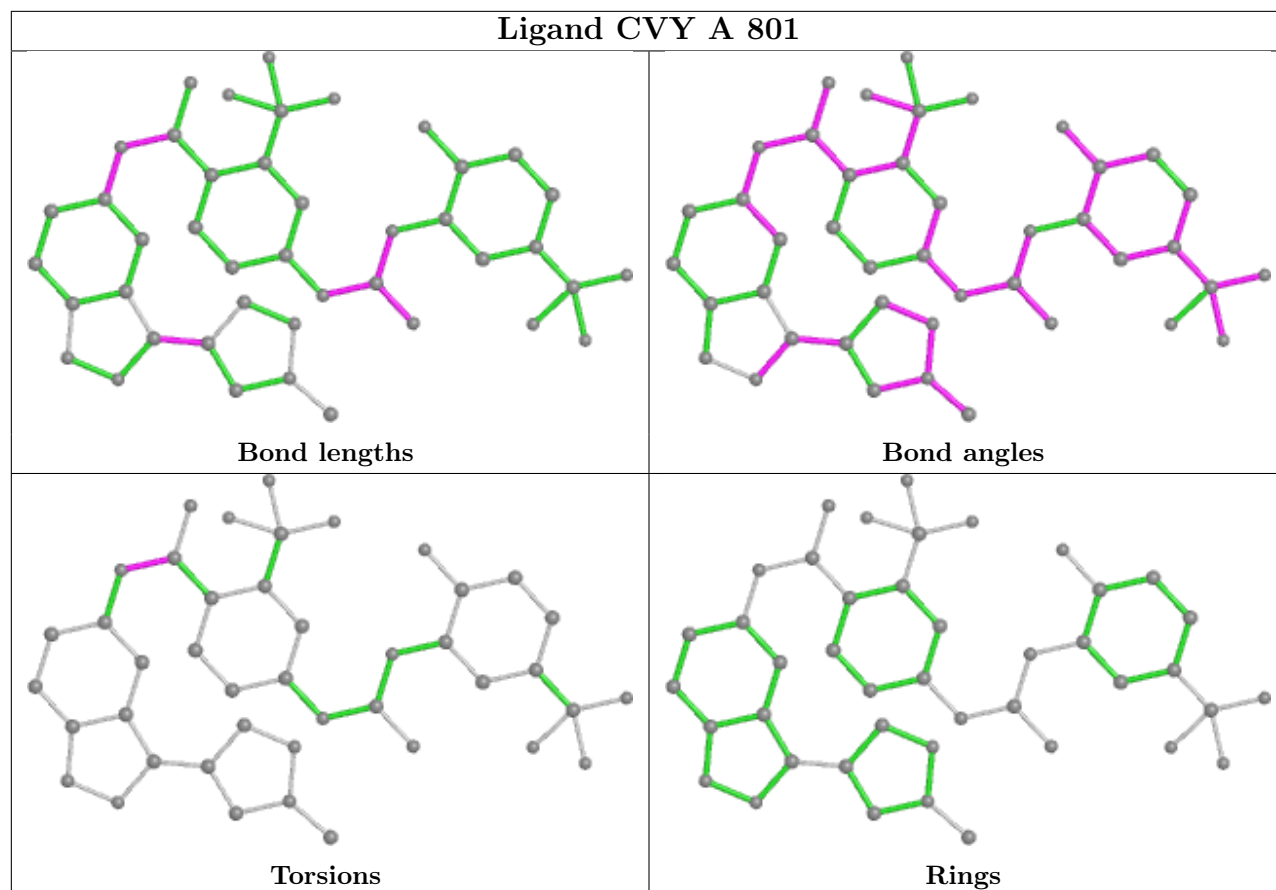
Mol	Chain	Res	Type	Atoms
2	A	801	CVY	O09-C08-N07-C04
2	A	801	CVY	C10-C08-N07-C04

There are no ring outliers.

1 monomer is involved in 1 short contact:

Mol	Chain	Res	Type	Clashes	Symm-Clashes
2	A	801	CVY	1	0

The following is a two-dimensional graphical depiction of Mogul quality analysis of bond lengths, bond angles, torsion angles, and ring geometry for all instances of the Ligand of Interest. In addition, ligands with molecular weight > 250 and outliers as shown on the validation Tables will also be included. For torsion angles, if less than 5% of the Mogul distribution of torsion angles is within 10 degrees of the torsion angle in question, then that torsion angle is considered an outlier. Any bond that is central to one or more torsion angles identified as an outlier by Mogul will be highlighted in the graph. For rings, the root-mean-square deviation (RMSD) between the ring in question and similar rings identified by Mogul is calculated over all ring torsion angles. If the average RMSD is greater than 60 degrees and the minimal RMSD between the ring in question and any Mogul-identified rings is also greater than 60 degrees, then that ring is considered an outlier. The outliers are highlighted in purple. The color gray indicates Mogul did not find sufficient equivalents in the CSD to analyse the geometry.



## 5.7 Other polymers [i](#)

There are no such residues in this entry.

## 5.8 Polymer linkage issues [i](#)

There are no chain breaks in this entry.

## 6 Fit of model and data [i](#)

### 6.1 Protein, DNA and RNA chains [i](#)

In the following table, the column labelled ‘#RSRZ> 2’ contains the number (and percentage) of RSRZ outliers, followed by percent RSRZ outliers for the chain as percentile scores relative to all X-ray entries and entries of similar resolution. The OWAB column contains the minimum, median, 95<sup>th</sup> percentile and maximum values of the occupancy-weighted average B-factor per residue. The column labelled ‘Q< 0.9’ lists the number of (and percentage) of residues with an average occupancy less than 0.9.

Mol	Chain	Analysed	<RSRZ>	#RSRZ>2	OWAB(Å <sup>2</sup> )	Q<0.9
1	A	299/311 (96%)	0.68	38 (12%) <b>3</b> <b>5</b>	23, 38, 79, 105	6 (2%)

All (38) RSRZ outliers are listed below:

Mol	Chain	Res	Type	RSRZ
1	A	684	GLY	10.5
1	A	610	LEU	9.3
1	A	686	ARG	7.8
1	A	521	PHE	6.3
1	A	611	LEU	6.2
1	A	537	ASP	6.1
1	A	607	ASP	5.9
1	A	612	ALA	5.7
1	A	549	ALA	5.4
1	A	685	GLY	5.3
1	A	683	VAL	5.1
1	A	609	LYS	5.0
1	A	534	PRO	5.0
1	A	550	SER	4.9
1	A	608	ALA	4.6
1	A	551	GLU	3.9
1	A	535	GLU	3.9
1	A	552	SER	3.7
1	A	687	THR	3.7
1	A	536	GLN	3.6
1	A	520	ALA	3.5
1	A	656	CYS	3.2
1	A	538	LYS	3.0
1	A	693	TRP	2.9
1	A	606	PRO	2.7
1	A	715	VAL	2.5
1	A	651	LEU	2.5

*Continued on next page...*

*Continued from previous page...*

Mol	Chain	Res	Type	RSRZ
1	A	497	PHE	2.5
1	A	716	VAL	2.4
1	A	652	ALA	2.4
1	A	649[A]	ARG	2.3
1	A	670	GLY	2.3
1	A	793	ASP	2.2
1	A	769	GLN	2.1
1	A	712	SER	2.1
1	A	498	SER	2.0
1	A	682	ARG	2.0
1	A	717	LEU	2.0

## 6.2 Non-standard residues in protein, DNA, RNA chains [i](#)

There are no non-standard protein/DNA/RNA residues in this entry.

## 6.3 Carbohydrates [i](#)

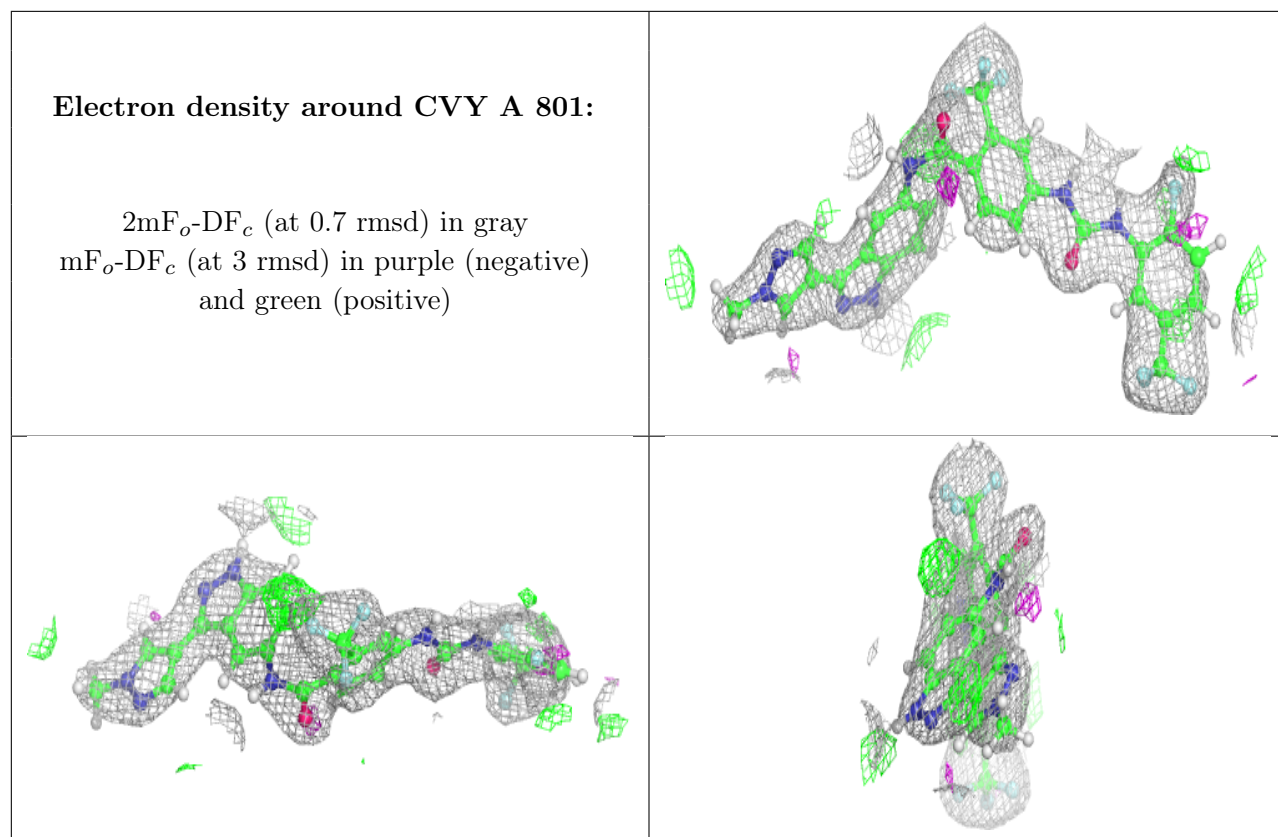
There are no monosaccharides in this entry.

## 6.4 Ligands [i](#)

In the following table, the Atoms column lists the number of modelled atoms in the group and the number defined in the chemical component dictionary. The B-factors column lists the minimum, median, 95<sup>th</sup> percentile and maximum values of B factors of atoms in the group. The column labelled 'Q< 0.9' lists the number of atoms with occupancy less than 0.9.

Mol	Type	Chain	Res	Atoms	RSCC	RSR	B-factors(Å <sup>2</sup> )	Q<0.9
2	CVY	A	801	43/43	0.91	0.16	28,46,65,78	0
3	CL	A	802	1/1	0.97	0.12	49,49,49,49	0

The following is a graphical depiction of the model fit to experimental electron density of all instances of the Ligand of Interest. In addition, ligands with molecular weight > 250 and outliers as shown on the geometry validation Tables will also be included. Each fit is shown from different orientation to approximate a three-dimensional view.



## 6.5 Other polymers [i](#)

There are no such residues in this entry.