



# Full wwPDB X-ray Structure Validation Report ⓘ

Nov 5, 2023 – 02:01 AM EST

PDB ID : 4XD5  
Title : Phosphotriesterase variant R2  
Authors : Campbell, E.; Kaltenbach, M.; Tokuriki, N.; Jackson, C.J.  
Deposited on : 2014-12-19  
Resolution : 1.85 Å(reported)

This is a Full wwPDB X-ray Structure Validation Report for a publicly released PDB entry.

We welcome your comments at [validation@mail.wwpdb.org](mailto:validation@mail.wwpdb.org)

A user guide is available at

<https://www.wwpdb.org/validation/2017/XrayValidationReportHelp>

with specific help available everywhere you see the ⓘ symbol.

The types of validation reports are described at

<http://www.wwpdb.org/validation/2017/FAQs#types>.

---

The following versions of software and data (see [references ⓘ](#)) were used in the production of this report:

MolProbity : 4.02b-467  
Mogul : 1.8.5 (274361), CSD as541be (2020)  
Xtriage (Phenix) : 1.13  
EDS : 2.36  
Percentile statistics : 20191225.v01 (using entries in the PDB archive December 25th 2019)  
Refmac : 5.8.0158  
CCP4 : 7.0.044 (Gargrove)  
Ideal geometry (proteins) : Engh & Huber (2001)  
Ideal geometry (DNA, RNA) : Parkinson et al. (1996)  
Validation Pipeline (wwPDB-VP) : 2.36

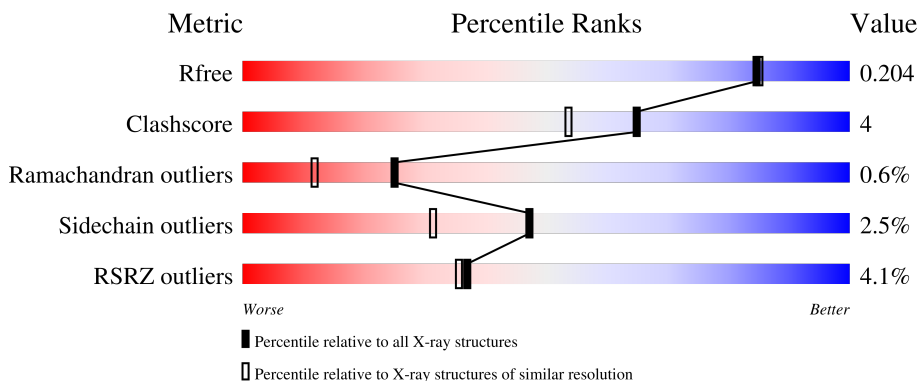
# 1 Overall quality at a glance

The following experimental techniques were used to determine the structure:

*X-RAY DIFFRACTION*


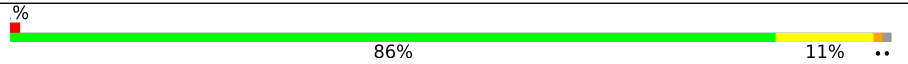
The reported resolution of this entry is 1.85 Å.

Percentile scores (ranging between 0-100) for global validation metrics of the entry are shown in the following graphic. The table shows the number of entries on which the scores are based.



Metric	Whole archive (#Entries)	Similar resolution (#Entries, resolution range(Å))
$R_{free}$	130704	2469 (1.86-1.86)
Clashscore	141614	2625 (1.86-1.86)
Ramachandran outliers	138981	2592 (1.86-1.86)
Sidechain outliers	138945	2592 (1.86-1.86)
RSRZ outliers	127900	2436 (1.86-1.86)

The table below summarises the geometric issues observed across the polymeric chains and their fit to the electron density. The red, orange, yellow and green segments of the lower bar indicate the fraction of residues that contain outliers for  $\geq 3$ , 2, 1 and 0 types of geometric quality criteria respectively. A grey segment represents the fraction of residues that are not modelled. The numeric value for each fraction is indicated below the corresponding segment, with a dot representing fractions  $\leq 5\%$ . The upper red bar (where present) indicates the fraction of residues that have poor fit to the electron density. The numeric value is given above the bar.

Mol	Chain	Length	Quality of chain
1	A	333	
1	G	333	

## 2 Entry composition [i](#)

There are 5 unique types of molecules in this entry. The entry contains 5809 atoms, of which 0 are hydrogens and 0 are deuteriums.

In the tables below, the ZeroOcc column contains the number of atoms modelled with zero occupancy, the AltConf column contains the number of residues with at least one atom in alternate conformation and the Trace column contains the number of residues modelled with at most 2 atoms.

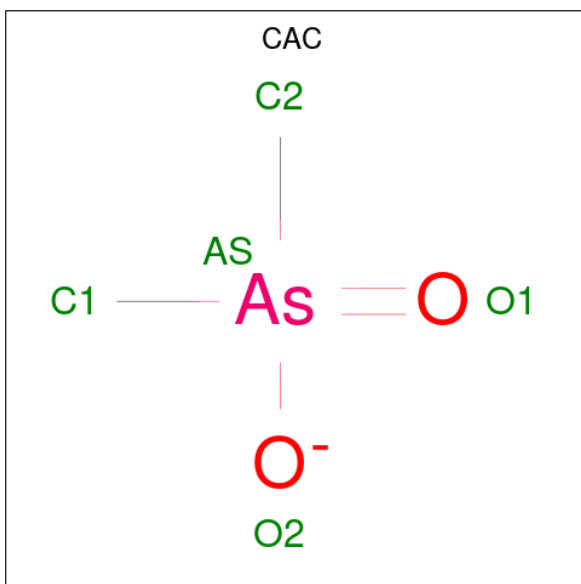
- Molecule 1 is a protein called Phosphotriesterase variant PTE-R2.

Mol	Chain	Residues	Atoms					ZeroOcc	AltConf	Trace
			Total	C	N	O	S			
1	A	331	Total 2706	C 1706	N 495	O 498	S 7	0	25	0
1	G	329	Total 2681	C 1692	N 482	O 499	S 8	0	25	0

- Molecule 2 is ZINC ION (three-letter code: ZN) (formula: Zn).

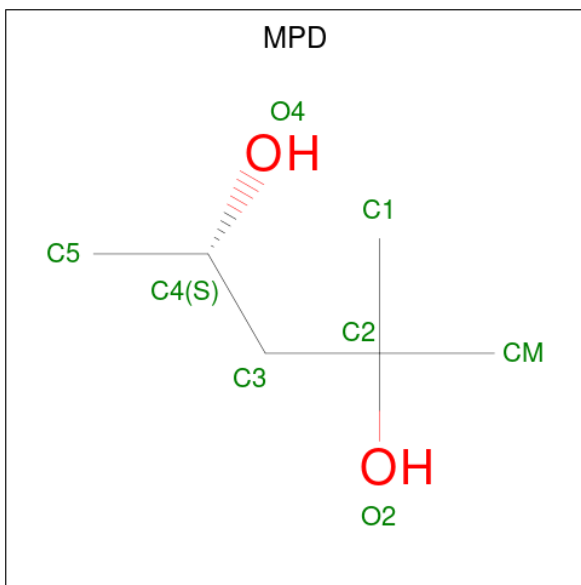
Mol	Chain	Residues	Atoms		ZeroOcc	AltConf
2	A	2	Total 2	Zn 2	0	0
2	G	2	Total 2	Zn 2	0	0

- Molecule 3 is CACODYLATE ION (three-letter code: CAC) (formula: C<sub>2</sub>H<sub>6</sub>AsO<sub>2</sub>).



Mol	Chain	Residues	Atoms				ZeroOcc	AltConf
			Total	As	C	O		
3	A	1	5	1	2	2	0	0
3	G	1	5	1	2	2	0	0

- Molecule 4 is (4S)-2-METHYL-2,4-PENTANEDIOL (three-letter code: MPD) (formula: C<sub>6</sub>H<sub>14</sub>O<sub>2</sub>).



Mol	Chain	Residues	Atoms			ZeroOcc	AltConf
			Total	C	O		
4	A	1	8	6	2	0	0
4	A	1	8	6	2	0	0
4	G	1	8	6	2	0	0

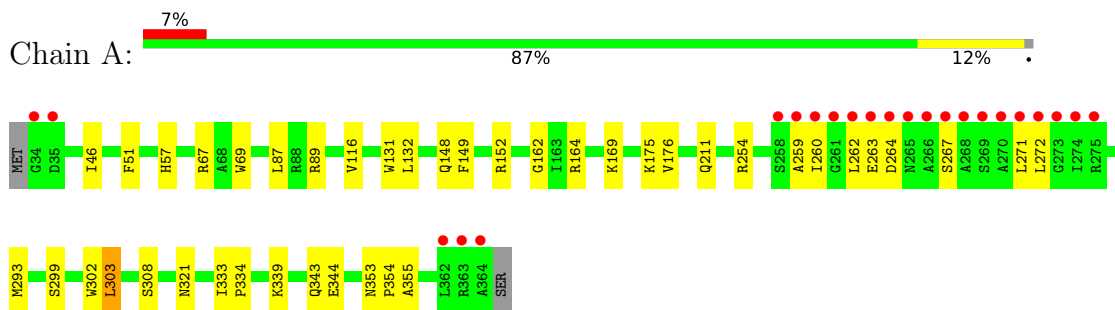
- Molecule 5 is water.

Mol	Chain	Residues	Atoms		ZeroOcc	AltConf
			Total	O		
5	A	181	181	181	0	0
5	G	203	203	203	0	0

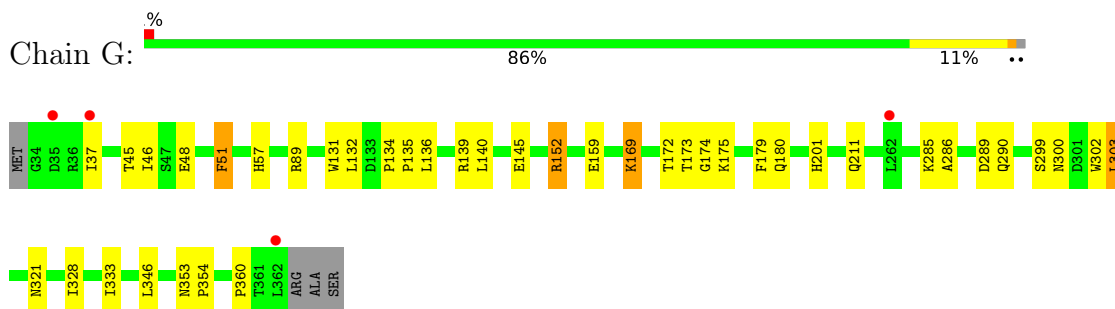
### 3 Residue-property plots [i](#)

These plots are drawn for all protein, RNA, DNA and oligosaccharide chains in the entry. The first graphic for a chain summarises the proportions of the various outlier classes displayed in the second graphic. The second graphic shows the sequence view annotated by issues in geometry and electron density. Residues are color-coded according to the number of geometric quality criteria for which they contain at least one outlier: green = 0, yellow = 1, orange = 2 and red = 3 or more. A red dot above a residue indicates a poor fit to the electron density ( $RSRZ > 2$ ). Stretches of 2 or more consecutive residues without any outlier are shown as a green connector. Residues present in the sample, but not in the model, are shown in grey.

- Molecule 1: Phosphotriesterase variant PTE-R2



- Molecule 1: Phosphotriesterase variant PTE-R2



## 4 Data and refinement statistics i

Property	Value	Source
Space group	P 21 21 2	Depositor
Cell constants a, b, c, $\alpha$ , $\beta$ , $\gamma$	85.70Å 85.87Å 88.38Å 90.00° 90.00° 90.00°	Depositor
Resolution (Å)	44.19 – 1.85 44.19 – 1.85	Depositor EDS
% Data completeness (in resolution range)	90.5 (44.19-1.85) 87.5 (44.19-1.85)	Depositor EDS
$R_{merge}$	0.05	Depositor
$R_{sym}$	(Not available)	Depositor
$\langle I/\sigma(I) \rangle$ <sup>1</sup>	4.88 (at 1.86Å)	Xtriage
Refinement program	PHENIX (phenix.refine: 1.9_1692)	Depositor
R, $R_{free}$	0.161 , 0.204 0.162 , 0.204	Depositor DCC
$R_{free}$ test set	2565 reflections (5.03%)	wwPDB-VP
Wilson B-factor (Å <sup>2</sup> )	16.9	Xtriage
Anisotropy	0.559	Xtriage
Bulk solvent $k_{sol}$ (e/Å <sup>3</sup> ), $B_{sol}$ (Å <sup>2</sup> )	0.36 , 59.1	EDS
L-test for twinning <sup>2</sup>	$\langle  L  \rangle = 0.49$ , $\langle L^2 \rangle = 0.32$	Xtriage
Estimated twinning fraction	0.017 for -h,l,k 0.017 for -l,-k,-h 0.018 for k,h,-l 0.007 for k,l,h 0.007 for l,h,k	Xtriage
$F_o, F_c$ correlation	0.96	EDS
Total number of atoms	5809	wwPDB-VP
Average B, all atoms (Å <sup>2</sup> )	23.0	wwPDB-VP

Xtriage's analysis on translational NCS is as follows: *The largest off-origin peak in the Patterson function is 4.77% of the height of the origin peak. No significant pseudotranslation is detected.*

<sup>1</sup>Intensities estimated from amplitudes.

<sup>2</sup>Theoretical values of  $\langle |L| \rangle$ ,  $\langle L^2 \rangle$  for acentric reflections are 0.5, 0.333 respectively for untwinned datasets, and 0.375, 0.2 for perfectly twinned datasets.

## 5 Model quality

### 5.1 Standard geometry

Bond lengths and bond angles in the following residue types are not validated in this section: ZN, MPD, CAC, KCX

The Z score for a bond length (or angle) is the number of standard deviations the observed value is removed from the expected value. A bond length (or angle) with  $|Z| > 5$  is considered an outlier worth inspection. RMSZ is the root-mean-square of all Z scores of the bond lengths (or angles).

Mol	Chain	Bond lengths		Bond angles	
		RMSZ	# Z  >5	RMSZ	# Z  >5
1	A	0.36	0/2774	0.54	0/3760
1	G	0.35	0/2735	0.52	0/3708
All	All	0.35	0/5509	0.53	0/7468

There are no bond length outliers.

There are no bond angle outliers.

There are no chirality outliers.

There are no planarity outliers.

### 5.2 Too-close contacts

In the following table, the Non-H and H(model) columns list the number of non-hydrogen atoms and hydrogen atoms in the chain respectively. The H(added) column lists the number of hydrogen atoms added and optimized by MolProbity. The Clashes column lists the number of clashes within the asymmetric unit, whereas Symm-Clashes lists symmetry-related clashes.

Mol	Chain	Non-H	H(model)	H(added)	Clashes	Symm-Clashes
1	A	2706	0	2744	21	0
1	G	2681	0	2712	24	0
2	A	2	0	0	0	0
2	G	2	0	0	0	0
3	A	5	0	0	0	0
3	G	5	0	0	0	0
4	A	16	0	28	5	0
4	G	8	0	14	1	0
5	A	181	0	0	1	0
5	G	203	0	0	2	1
All	All	5809	0	5498	45	1

The all-atom clashscore is defined as the number of clashes found per 1000 atoms (including hydrogen atoms). The all-atom clashscore for this structure is 4.

All (45) close contacts within the same asymmetric unit are listed below, sorted by their clash magnitude.

Atom-1	Atom-2	Interatomic distance (Å)	Clash overlap (Å)
1:A:343:GLN:HE22	4:A:2404:MPD:HM2	1.58	0.67
1:A:69:TRP:HE1	4:A:2405:MPD:H11	1.63	0.62
1:G:37[A]:ILE:HG22	1:G:360:PRO:HD3	1.80	0.62
4:A:2404:MPD:HO2	4:A:2404:MPD:HO4	1.49	0.61
1:A:259:ALA:HB1	1:A:262:LEU:HD13	1.82	0.60
1:A:87:LEU:HD12	1:A:116[B]:VAL:HG12	1.83	0.59
1:G:286:ALA:O	1:G:290[B]:GLN:HG2	2.05	0.56
4:A:2404:MPD:O4	4:A:2404:MPD:O2	2.21	0.55
1:G:285:LYS:NZ	1:G:289:ASP:OD2	2.34	0.54
1:G:302:TRP:CH2	1:G:321:ASN:HB3	2.42	0.53
1:A:254[A]:ARG:NH2	1:A:271:LEU:O	2.43	0.52
1:A:175:LYS:HA	1:A:211[A]:GLN:HE21	1.75	0.51
1:A:259:ALA:HB2	1:A:272:LEU:HB3	1.92	0.51
1:G:139:ARG:HA	1:G:179:PHE:CE1	2.45	0.50
1:A:67[B]:ARG:HG2	1:G:159:GLU:HG2	1.94	0.50
1:A:57:HIS:HB2	1:A:303:LEU:HB3	1.93	0.50
1:A:344:GLU:CD	1:A:344:GLU:H	2.15	0.50
1:G:57:HIS:HB2	1:G:303:LEU:HB3	1.95	0.49
1:A:46:ILE:HG23	1:A:355:ALA:HB1	1.96	0.48
1:A:89[A]:ARG:HG3	5:A:2523:HOH:O	2.14	0.48
1:A:162:GLY:O	1:A:164[A]:ARG:NH1	2.48	0.46
1:G:131:TRP:CG	1:G:132:LEU:N	2.84	0.46
1:G:300:ASN:OD1	1:G:328:ILE:HG12	2.16	0.46
1:A:148[B]:GLN:HG3	1:A:149:PHE:N	2.29	0.45
1:A:302:TRP:CH2	1:A:321:ASN:HB3	2.51	0.45
1:G:173:THR:O	1:G:175[A]:LYS:N	2.50	0.45
1:G:57:HIS:O	1:G:303:LEU:HA	2.17	0.45
1:A:333:ILE:HB	1:A:334:PRO:HD3	1.98	0.45
1:G:172:THR:HG22	1:G:180:GLN:HB3	1.98	0.45
1:G:89[B]:ARG:NH2	5:G:606:HOH:O	2.48	0.44
1:G:173:THR:O	1:G:175[B]:LYS:N	2.50	0.44
1:G:45[A]:THR:OG1	1:G:48[A]:GLU:HG3	2.18	0.44
1:A:339:LYS:HA	1:A:339:LYS:HD3	1.82	0.43
1:G:333:ILE:HG23	1:G:346:LEU:HD13	2.01	0.43
1:G:353:ASN:HB2	1:G:354:PRO:HD3	2.01	0.43
1:A:131:TRP:CG	1:A:132:LEU:N	2.87	0.43
1:A:353:ASN:HB2	1:A:354:PRO:HD3	2.00	0.43

*Continued on next page...*



Continued from previous page...

Atom-1	Atom-2	Interatomic distance (Å)	Clash overlap (Å)
4:A:2405:MPD:H4	1:G:145:GLU:HG2	2.01	0.42
1:A:57:HIS:O	1:A:303:LEU:HA	2.20	0.42
1:G:136[B]:LEU:HG	1:G:140:LEU:HD22	2.02	0.42
1:A:308:SER:HB3	1:G:136[B]:LEU:HD23	2.01	0.42
1:G:169:KCX:OQ1	1:G:201:HIS:HB2	2.19	0.41
1:G:51:PHE:CD2	4:G:404:MPD:H31	2.55	0.41
1:G:134:PRO:HA	1:G:135[A]:PRO:HD3	1.82	0.41
1:G:152[B]:ARG:NH2	5:G:618:HOH:O	2.46	0.40

All (1) symmetry-related close contacts are listed below. The label for Atom-2 includes the symmetry operator and encoded unit-cell translations to be applied.

Atom-1	Atom-2	Interatomic distance (Å)	Clash overlap (Å)
5:G:541:HOH:O	5:G:666:HOH:O[4_456]	2.12	0.08

## 5.3 Torsion angles [i](#)

### 5.3.1 Protein backbone [i](#)

In the following table, the Percentiles column shows the percent Ramachandran outliers of the chain as a percentile score with respect to all X-ray entries followed by that with respect to entries of similar resolution.

The Analysed column shows the number of residues for which the backbone conformation was analysed, and the total number of residues.

Mol	Chain	Analysed	Favoured	Allowed	Outliers	Percentiles	
1	A	353/333 (106%)	336 (95%)	14 (4%)	3 (1%)	19	7
1	G	350/333 (105%)	341 (97%)	8 (2%)	1 (0%)	41	26
All	All	703/666 (106%)	677 (96%)	22 (3%)	4 (1%)	25	12

All (4) Ramachandran outliers are listed below:

Mol	Chain	Res	Type
1	G	174	GLY
1	A	176	VAL
1	A	260	ILE
1	A	267	SER

### 5.3.2 Protein sidechains [i](#)

In the following table, the Percentiles column shows the percent sidechain outliers of the chain as a percentile score with respect to all X-ray entries followed by that with respect to entries of similar resolution.

The Analysed column shows the number of residues for which the sidechain conformation was analysed, and the total number of residues.

Mol	Chain	Analysed	Rotameric	Outliers	Percentiles	
1	A	287/266 (108%)	280 (98%)	7 (2%)	49	33
1	G	284/266 (107%)	276 (97%)	8 (3%)	43	27
All	All	571/532 (107%)	556 (97%)	15 (3%)	47	30

All (15) residues with a non-rotameric sidechain are listed below:

Mol	Chain	Res	Type
1	A	51	PHE
1	A	152	ARG
1	A	263	GLU
1	A	264	ASP
1	A	293	MET
1	A	299	SER
1	A	303	LEU
1	G	46[A]	ILE
1	G	46[B]	ILE
1	G	51	PHE
1	G	152[A]	ARG
1	G	152[B]	ARG
1	G	211	GLN
1	G	299	SER
1	G	303	LEU

Sometimes sidechains can be flipped to improve hydrogen bonding and reduce clashes. There are no such sidechains identified.

### 5.3.3 RNA [i](#)

There are no RNA molecules in this entry.

## 5.4 Non-standard residues in protein, DNA, RNA chains [i](#)

2 non-standard protein/DNA/RNA residues are modelled in this entry.

In the following table, the Counts columns list the number of bonds (or angles) for which Mogul statistics could be retrieved, the number of bonds (or angles) that are observed in the model and the number of bonds (or angles) that are defined in the Chemical Component Dictionary. The Link column lists molecule types, if any, to which the group is linked. The Z score for a bond length (or angle) is the number of standard deviations the observed value is removed from the expected value. A bond length (or angle) with  $|Z| > 2$  is considered an outlier worth inspection. RMSZ is the root-mean-square of all Z scores of the bond lengths (or angles).

Mol	Type	Chain	Res	Link	Bond lengths			Bond angles		
					Counts	RMSZ	# Z  > 2	Counts	RMSZ	# Z  > 2
1	KCX	G	169	2,1	9,11,12	1.19	1 (11%)	5,12,14	1.45	1 (20%)
1	KCX	A	169	2,1	9,11,12	1.09	1 (11%)	5,12,14	1.55	1 (20%)

In the following table, the Chirals column lists the number of chiral outliers, the number of chiral centers analysed, the number of these observed in the model and the number defined in the Chemical Component Dictionary. Similar counts are reported in the Torsion and Rings columns. '-' means no outliers of that kind were identified.

Mol	Type	Chain	Res	Link	Chirals	Torsions	Rings
1	KCX	G	169	2,1	-	0/9/10/12	-
1	KCX	A	169	2,1	-	0/9/10/12	-

All (2) bond length outliers are listed below:

Mol	Chain	Res	Type	Atoms	Z	Observed(Å)	Ideal(Å)
1	G	169	KCX	OQ1-CX	2.34	1.26	1.21
1	A	169	KCX	CE-NZ	2.33	1.51	1.46

All (2) bond angle outliers are listed below:

Mol	Chain	Res	Type	Atoms	Z	Observed(°)	Ideal(°)
1	A	169	KCX	OQ1-CX-NZ	-3.27	119.89	124.96
1	G	169	KCX	OQ1-CX-NZ	-2.90	120.46	124.96

There are no chirality outliers.

There are no torsion outliers.

There are no ring outliers.

1 monomer is involved in 1 short contact:

Mol	Chain	Res	Type	Clashes	Symm-Clashes
1	G	169	KCX	1	0

## 5.5 Carbohydrates [i](#)

There are no monosaccharides in this entry.

## 5.6 Ligand geometry [i](#)

Of 9 ligands modelled in this entry, 4 are monoatomic - leaving 5 for Mogul analysis.

In the following table, the Counts columns list the number of bonds (or angles) for which Mogul statistics could be retrieved, the number of bonds (or angles) that are observed in the model and the number of bonds (or angles) that are defined in the Chemical Component Dictionary. The Link column lists molecule types, if any, to which the group is linked. The Z score for a bond length (or angle) is the number of standard deviations the observed value is removed from the expected value. A bond length (or angle) with  $|Z| > 2$  is considered an outlier worth inspection. RMSZ is the root-mean-square of all Z scores of the bond lengths (or angles).

Mol	Type	Chain	Res	Link	Bond lengths			Bond angles		
					Counts	RMSZ	# Z  > 2	Counts	RMSZ	# Z  > 2
4	MPD	A	2405	-	7,7,7	0.28	0	9,10,10	0.41	0
3	CAC	G	401	2	0,4,4	-	-	0,6,6	-	-
4	MPD	G	404	-	7,7,7	0.32	0	9,10,10	0.35	0
3	CAC	A	2403	2	0,4,4	-	-	0,6,6	-	-
4	MPD	A	2404	-	7,7,7	0.28	0	9,10,10	0.20	0

In the following table, the Chirals column lists the number of chiral outliers, the number of chiral centers analysed, the number of these observed in the model and the number defined in the Chemical Component Dictionary. Similar counts are reported in the Torsion and Rings columns. '-' means no outliers of that kind were identified.

Mol	Type	Chain	Res	Link	Chirals	Torsions	Rings
4	MPD	A	2405	-	-	1/5/5/5	-
4	MPD	A	2404	-	-	2/5/5/5	-
4	MPD	G	404	-	-	5/5/5/5	-

There are no bond length outliers.

There are no bond angle outliers.

There are no chirality outliers.

All (8) torsion outliers are listed below:

Mol	Chain	Res	Type	Atoms
4	A	2404	MPD	C2-C3-C4-C5
4	G	404	MPD	O2-C2-C3-C4

*Continued on next page...*

*Continued from previous page...*

Mol	Chain	Res	Type	Atoms
4	A	2405	MPD	C2-C3-C4-C5
4	G	404	MPD	C1-C2-C3-C4
4	G	404	MPD	CM-C2-C3-C4
4	G	404	MPD	C2-C3-C4-C5
4	A	2404	MPD	C2-C3-C4-O4
4	G	404	MPD	C2-C3-C4-O4

There are no ring outliers.

3 monomers are involved in 6 short contacts:

Mol	Chain	Res	Type	Clashes	Symm-Clashes
4	A	2405	MPD	2	0
4	G	404	MPD	1	0
4	A	2404	MPD	3	0

## 5.7 Other polymers [i](#)

There are no such residues in this entry.

## 5.8 Polymer linkage issues [i](#)

There are no chain breaks in this entry.

## 6 Fit of model and data

### 6.1 Protein, DNA and RNA chains

In the following table, the column labelled ‘#RSRZ > 2’ contains the number (and percentage) of RSRZ outliers, followed by percent RSRZ outliers for the chain as percentile scores relative to all X-ray entries and entries of similar resolution. The OWAB column contains the minimum, median, 95<sup>th</sup> percentile and maximum values of the occupancy-weighted average B-factor per residue. The column labelled ‘Q < 0.9’ lists the number of (and percentage) of residues with an average occupancy less than 0.9.

Mol	Chain	Analysed	<RSRZ>	#RSRZ>2	OWAB(Å <sup>2</sup> )	Q<0.9
1	A	330/333 (99%)	0.64	23 (6%) 16 15	7, 17, 71, 145	0
1	G	328/333 (98%)	-0.23	4 (1%) 79 79	9, 19, 38, 64	0
All	All	658/666 (98%)	0.21	27 (4%) 37 35	7, 18, 47, 145	0

All (27) RSRZ outliers are listed below:

Mol	Chain	Res	Type	RSRZ
1	A	260	ILE	33.6
1	A	270	ALA	31.2
1	A	262	LEU	23.0
1	A	261	GLY	21.7
1	A	266	ALA	21.3
1	A	268	ALA	21.1
1	A	273	GLY	19.6
1	A	265	ASN	18.7
1	A	271	LEU	16.9
1	A	274	ILE	16.6
1	A	263	GLU	13.3
1	A	264	ASP	11.4
1	A	272	LEU	11.0
1	A	269	SER	10.0
1	A	267	SER	9.8
1	A	259	ALA	9.7
1	A	275	ARG	6.6
1	G	362	LEU	5.6
1	A	35	ASP	4.0
1	A	363	ARG	3.7
1	G	35	ASP	2.9
1	A	364	ALA	2.8
1	A	34	GLY	2.6
1	A	362	LEU	2.5

*Continued on next page...*

*Continued from previous page...*

Mol	Chain	Res	Type	RSRZ
1	G	262	LEU	2.3
1	G	37[A]	ILE	2.3
1	A	258	SER	2.3

## 6.2 Non-standard residues in protein, DNA, RNA chains [i](#)

In the following table, the Atoms column lists the number of modelled atoms in the group and the number defined in the chemical component dictionary. The B-factors column lists the minimum, median, 95<sup>th</sup> percentile and maximum values of B factors of atoms in the group. The column labelled 'Q< 0.9' lists the number of atoms with occupancy less than 0.9.

Mol	Type	Chain	Res	Atoms	RSCC	RSR	B-factors(Å <sup>2</sup> )	Q<0.9
1	KCX	G	169	12/13	0.94	0.09	8,15,17,19	0
1	KCX	A	169	12/13	0.95	0.10	8,10,16,17	0

## 6.3 Carbohydrates [i](#)

There are no monosaccharides in this entry.

## 6.4 Ligands [i](#)

In the following table, the Atoms column lists the number of modelled atoms in the group and the number defined in the chemical component dictionary. The B-factors column lists the minimum, median, 95<sup>th</sup> percentile and maximum values of B factors of atoms in the group. The column labelled 'Q< 0.9' lists the number of atoms with occupancy less than 0.9.

Mol	Type	Chain	Res	Atoms	RSCC	RSR	B-factors(Å <sup>2</sup> )	Q<0.9
4	MPD	G	404	8/8	0.74	0.27	44,54,58,60	0
4	MPD	A	2405	8/8	0.85	0.13	42,48,62,72	0
4	MPD	A	2404	8/8	0.86	0.25	37,47,62,66	0
3	CAC	A	2403	5/5	0.96	0.14	9,18,25,26	5
3	CAC	G	401	5/5	0.98	0.10	17,19,26,26	5
2	ZN	A	2402	1/1	0.99	0.10	14,14,14,14	1
2	ZN	G	403	1/1	1.00	0.05	17,17,17,17	1
2	ZN	A	2401	1/1	1.00	0.07	13,13,13,13	0
2	ZN	G	402	1/1	1.00	0.06	14,14,14,14	0

## 6.5 Other polymers [i](#)

There are no such residues in this entry.