



# Full wwPDB X-ray Structure Validation Report ⓘ

Sep 30, 2021 – 01:07 PM EDT

PDB ID : 6XD0  
Title : Dengue serotype 3 RNA-dependent RNA polymerase bound to NITD-434  
Authors : Arora, R.; Benson, T.E.; Liew, C.W.; Lescar, J.  
Deposited on : 2020-06-09  
Resolution : 2.01 Å(reported)

This is a Full wwPDB X-ray Structure Validation Report for a publicly released PDB entry.

We welcome your comments at [validation@mail.wwpdb.org](mailto:validation@mail.wwpdb.org)

A user guide is available at

<https://www.wwpdb.org/validation/2017/XrayValidationReportHelp>

with specific help available everywhere you see the ⓘ symbol.

---

The following versions of software and data (see [references ⓘ](#)) were used in the production of this report:

MolProbity : 4.02b-467  
Mogul : 1.8.5 (274361), CSD as541be (2020)  
Xtriage (Phenix) : 1.13  
EDS : 2.23.2  
buster-report : 1.1.7 (2018)  
Percentile statistics : 20191225.v01 (using entries in the PDB archive December 25th 2019)  
Refmac : 5.8.0158  
CCP4 : 7.0.044 (Gargrove)  
Ideal geometry (proteins) : Engh & Huber (2001)  
Ideal geometry (DNA, RNA) : Parkinson et al. (1996)  
Validation Pipeline (wwPDB-VP) : 2.23.2

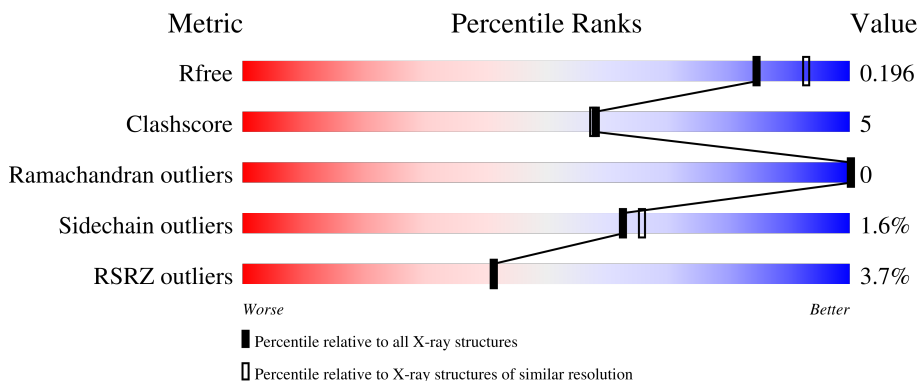
# 1 Overall quality at a glance

The following experimental techniques were used to determine the structure:

*X-RAY DIFFRACTION*

The reported resolution of this entry is 2.01 Å.

Percentile scores (ranging between 0-100) for global validation metrics of the entry are shown in the following graphic. The table shows the number of entries on which the scores are based.



Metric	Whole archive (#Entries)	Similar resolution (#Entries, resolution range(Å))
$R_{free}$	130704	10434 (2.04-2.00)
Clashscore	141614	11643 (2.04-2.00)
Ramachandran outliers	138981	11493 (2.04-2.00)
Sidechain outliers	138945	11492 (2.04-2.00)
RSRZ outliers	127900	10220 (2.04-2.00)

The table below summarises the geometric issues observed across the polymeric chains and their fit to the electron density. The red, orange, yellow and green segments of the lower bar indicate the fraction of residues that contain outliers for  $\geq 3$ , 2, 1 and 0 types of geometric quality criteria respectively. A grey segment represents the fraction of residues that are not modelled. The numeric value for each fraction is indicated below the corresponding segment, with a dot representing fractions  $\leq 5\%$ . The upper red bar (where present) indicates the fraction of residues that have poor fit to the electron density. The numeric value is given above the bar.

Mol	Chain	Length	Quality of chain
1	A	635	

The following table lists non-polymeric compounds, carbohydrate monomers and non-standard residues in protein, DNA, RNA chains that are outliers for geometric or electron-density-fit criteria:

Mol	Type	Chain	Res	Chirality	Geometry	Clashes	Electron density
4	PEG	A	1005	-	-	X	-

## 2 Entry composition

There are 6 unique types of molecules in this entry. The entry contains 5288 atoms, of which 0 are hydrogens and 0 are deuteriums.

In the tables below, the ZeroOcc column contains the number of atoms modelled with zero occupancy, the AltConf column contains the number of residues with at least one atom in alternate conformation and the Trace column contains the number of residues modelled with at most 2 atoms.

- Molecule 1 is a protein called RNA-dependent RNA polymerase.

Mol	Chain	Residues	Atoms					ZeroOcc	AltConf	Trace
			Total	C	N	O	S			
1	A	589	4824	3045	866	881	32	0	3	0

There are 8 discrepancies between the modelled and reference sequences:

Chain	Residue	Modelled	Actual	Comment	Reference
A	266	GLY	-	expression tag	UNP A1XTB9
A	267	SER	-	expression tag	UNP A1XTB9
A	268	HIS	-	expression tag	UNP A1XTB9
A	269	MET	-	expression tag	UNP A1XTB9
A	270	LEU	-	expression tag	UNP A1XTB9
A	271	ASP	-	expression tag	UNP A1XTB9
A	366	LEU	MET	conflict	UNP A1XTB9
A	480	VAL	ALA	conflict	UNP A1XTB9

- Molecule 2 is ZINC ION (three-letter code: ZN) (formula: Zn).

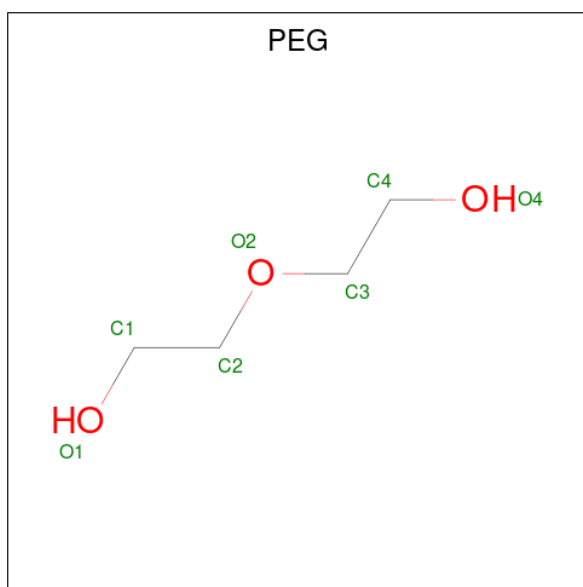
Mol	Chain	Residues	Atoms		ZeroOcc	AltConf
2	A	2	Total	Zn	0	0
			2	2		

- Molecule 3 is GLYCEROL (three-letter code: GOL) (formula: C<sub>3</sub>H<sub>8</sub>O<sub>3</sub>).



Mol	Chain	Residues	Atoms			ZeroOcc	AltConf
3	A	1	Total	C	O	0	0
			6	3	3		
3	A	1	Total	C	O	0	0
			6	3	3		
3	A	1	Total	C	O	0	0
			6	3	3		

- Molecule 4 is DI(HYDROXYETHYL)ETHER (three-letter code: PEG) (formula: C<sub>4</sub>H<sub>10</sub>O<sub>3</sub>).



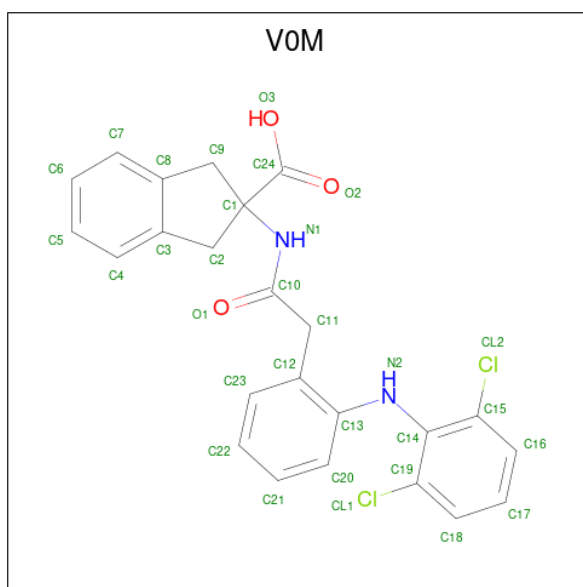
Mol	Chain	Residues	Atoms			ZeroOcc	AltConf
4	A	1	Total	C	O	0	0
			7	4	3		

*Continued on next page...*

Continued from previous page...

Mol	Chain	Residues	Atoms			ZeroOcc	AltConf
4	A	1	Total	C	O	0	0
			7	4	3		

- Molecule 5 is 2-[(2-[(2,6-dichlorophenyl)amino]phenyl)acetyl]amino]-2,3-dihydro-1H-inden-2-carboxylic acid (three-letter code: V0M) (formula: C<sub>24</sub>H<sub>20</sub>Cl<sub>2</sub>N<sub>2</sub>O<sub>3</sub>) (labeled as "Ligand of Interest" by depositor).



Mol	Chain	Residues	Atoms					ZeroOcc	AltConf
5	A	1	Total	C	Cl	N	O	0	0
			31	24	2	2	3		

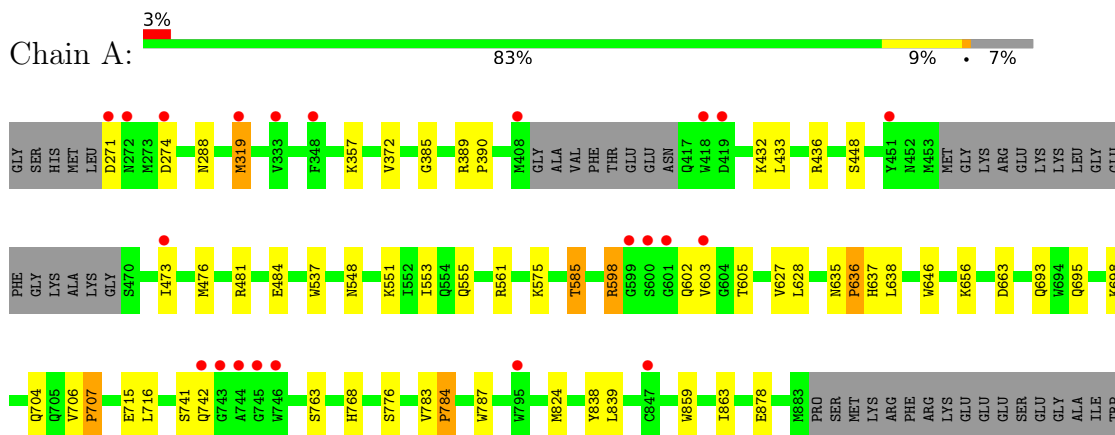
- Molecule 6 is water.

Mol	Chain	Residues	Atoms		ZeroOcc	AltConf
6	A	399	Total	O	0	0
			399	399		

### 3 Residue-property plots [i](#)

These plots are drawn for all protein, RNA, DNA and oligosaccharide chains in the entry. The first graphic for a chain summarises the proportions of the various outlier classes displayed in the second graphic. The second graphic shows the sequence view annotated by issues in geometry and electron density. Residues are color-coded according to the number of geometric quality criteria for which they contain at least one outlier: green = 0, yellow = 1, orange = 2 and red = 3 or more. A red dot above a residue indicates a poor fit to the electron density ( $RSRZ > 2$ ). Stretches of 2 or more consecutive residues without any outlier are shown as a green connector. Residues present in the sample, but not in the model, are shown in grey.

- Molecule 1: RNA-dependent RNA polymerase



## 4 Data and refinement statistics

Property	Value	Source
Space group	C 2 2 21	Depositor
Cell constants a, b, c, $\alpha$ , $\beta$ , $\gamma$	161.66Å 176.24Å 57.76Å 90.00° 90.00° 90.00°	Depositor
Resolution (Å)	20.00 – 2.01 88.12 – 2.01	Depositor EDS
% Data completeness (in resolution range)	98.6 (20.00-2.01) 98.6 (88.12-2.01)	Depositor EDS
$R_{merge}$	0.05	Depositor
$R_{sym}$	(Not available)	Depositor
$\langle I/\sigma(I) \rangle$ <sup>1</sup>	2.73 (at 2.02Å)	Xtrriage
Refinement program	BUSTER 2.10.3 (3-OCT-2019)	Depositor
R, $R_{free}$	0.175 , 0.194 0.179 , 0.196	Depositor DCC
$R_{free}$ test set	2769 reflections (5.08%)	wwPDB-VP
Wilson B-factor (Å <sup>2</sup> )	39.6	Xtrriage
Anisotropy	0.509	Xtrriage
Bulk solvent $k_{sol}$ (e/Å <sup>3</sup> ), $B_{sol}$ (Å <sup>2</sup> )	0.36 , 59.1	EDS
L-test for twinning <sup>2</sup>	$\langle  L  \rangle = 0.48$ , $\langle L^2 \rangle = 0.32$	Xtrriage
Estimated twinning fraction	No twinning to report.	Xtrriage
$F_o, F_c$ correlation	0.96	EDS
Total number of atoms	5288	wwPDB-VP
Average B, all atoms (Å <sup>2</sup> )	48.0	wwPDB-VP

Xtrriage's analysis on translational NCS is as follows: *The largest off-origin peak in the Patterson function is 4.92% of the height of the origin peak. No significant pseudotranslation is detected.*

<sup>1</sup>Intensities estimated from amplitudes.

<sup>2</sup>Theoretical values of  $\langle |L| \rangle$ ,  $\langle L^2 \rangle$  for acentric reflections are 0.5, 0.333 respectively for untwinned datasets, and 0.375, 0.2 for perfectly twinned datasets.

## 5 Model quality [i](#)

### 5.1 Standard geometry [i](#)

Bond lengths and bond angles in the following residue types are not validated in this section: ZN, PEG, V0M, GOL

The Z score for a bond length (or angle) is the number of standard deviations the observed value is removed from the expected value. A bond length (or angle) with  $|Z| > 5$  is considered an outlier worth inspection. RMSZ is the root-mean-square of all Z scores of the bond lengths (or angles).

Mol	Chain	Bond lengths		Bond angles	
		RMSZ	# $ Z  > 5$	RMSZ	# $ Z  > 5$
1	A	0.58	7/4953 (0.1%)	0.64	6/6708 (0.1%)

All (7) bond length outliers are listed below:

Mol	Chain	Res	Type	Atoms	Z	Observed(Å)	Ideal(Å)
1	A	784	PRO	N-CA	12.82	1.69	1.47
1	A	636	PRO	N-CA	12.47	1.68	1.47
1	A	707	PRO	N-CA	12.25	1.68	1.47
1	A	695	GLN	C-N	7.91	1.49	1.34
1	A	783	VAL	C-N	5.36	1.44	1.34
1	A	706	VAL	C-N	5.29	1.44	1.34
1	A	635	ASN	C-N	5.27	1.44	1.34

All (6) bond angle outliers are listed below:

Mol	Chain	Res	Type	Atoms	Z	Observed(°)	Ideal(°)
1	A	707	PRO	CA-N-CD	-6.37	102.58	111.50
1	A	636	PRO	CA-N-CD	-6.34	102.63	111.50
1	A	784	PRO	CA-N-CD	-6.11	102.95	111.50
1	A	598	ARG	CB-CA-C	-5.72	98.96	110.40
1	A	784	PRO	N-CA-C	-5.43	97.97	112.10
1	A	271	ASP	CB-CG-OD2	5.21	122.99	118.30

There are no chirality outliers.

There are no planarity outliers.



## 5.2 Too-close contacts [i](#)

In the following table, the Non-H and H(model) columns list the number of non-hydrogen atoms and hydrogen atoms in the chain respectively. The H(added) column lists the number of hydrogen atoms added and optimized by MolProbity. The Clashes column lists the number of clashes within the asymmetric unit, whereas Symm-Clashes lists symmetry-related clashes.

Mol	Chain	Non-H	H(model)	H(added)	Clashes	Symm-Clashes
1	A	4824	0	4715	46	0
2	A	2	0	0	0	0
3	A	18	0	24	4	0
4	A	14	0	20	6	0
5	A	31	0	0	0	0
6	A	399	0	0	0	1
All	All	5288	0	4759	46	1

The all-atom clashscore is defined as the number of clashes found per 1000 atoms (including hydrogen atoms). The all-atom clashscore for this structure is 5.

All (46) close contacts within the same asymmetric unit are listed below, sorted by their clash magnitude.

Atom-1	Atom-2	Interatomic distance (Å)	Clash overlap (Å)
1:A:784:PRO:N	1:A:784:PRO:CA	1.69	1.44
1:A:636:PRO:CA	1:A:636:PRO:N	1.68	1.32
1:A:707:PRO:CA	1:A:707:PRO:N	1.68	1.30
1:A:484:GLU:OE1	1:A:602:GLN:HB3	1.86	0.74
1:A:784:PRO:N	1:A:784:PRO:C	2.43	0.72
1:A:636:PRO:N	1:A:636:PRO:C	2.45	0.69
1:A:742:GLN:NE2	1:A:742:GLN:HA	2.09	0.66
1:A:707:PRO:N	1:A:707:PRO:C	2.47	0.66
1:A:716:LEU:HD21	1:A:839:LEU:HD23	1.77	0.66
1:A:372:VAL:HG21	1:A:628:LEU:HD11	1.81	0.63
1:A:742:GLN:HA	1:A:742:GLN:HE21	1.64	0.62
1:A:656:LYS:HZ3	4:A:1005:PEG:H32	1.68	0.59
1:A:385:GLY:HA3	1:A:555:GLN:HE22	1.69	0.57
1:A:585:THR:O	1:A:585:THR:HG23	2.03	0.57
1:A:656:LYS:HZ3	4:A:1005:PEG:C3	2.17	0.57
1:A:704:GLN:NE2	1:A:715:GLU:H	2.03	0.56
1:A:704:GLN:HE21	1:A:715:GLU:H	1.54	0.55
1:A:602:GLN:HB2	1:A:605:THR:HG23	1.90	0.54
1:A:768:HIS:HA	1:A:838:TYR:HA	1.90	0.53
1:A:656:LYS:NZ	4:A:1005:PEG:H32	2.23	0.52
1:A:598:ARG:HD2	1:A:605:THR:HB	1.92	0.51

*Continued on next page...*

Continued from previous page...

Atom-1	Atom-2	Interatomic distance (Å)	Clash overlap (Å)
1:A:432:LYS:NZ	3:A:1004:GOL:H2	2.26	0.51
1:A:432:LYS:HZ3	3:A:1004:GOL:H2	1.78	0.48
1:A:693:GLN:NE2	3:A:1006:GOL:O2	2.39	0.48
1:A:553:ILE:HB	1:A:561[A]:ARG:HG3	1.96	0.48
1:A:656:LYS:HZ3	4:A:1005:PEG:C2	2.28	0.47
1:A:636:PRO:N	1:A:637:HIS:N	2.63	0.46
1:A:537:TRP:CG	1:A:663:ASP:HB3	2.50	0.46
1:A:548:ASN:HD22	1:A:551:LYS:HE2	1.80	0.46
1:A:638:LEU:HD12	1:A:638:LEU:C	2.35	0.46
1:A:656:LYS:NZ	4:A:1005:PEG:C3	2.79	0.46
1:A:656:LYS:HZ3	4:A:1005:PEG:H22	1.82	0.44
1:A:448:SER:HB2	1:A:476:MET:HE3	1.99	0.44
1:A:602:GLN:HB2	1:A:602:GLN:HE21	1.51	0.44
1:A:627:VAL:HG21	1:A:646:TRP:CD1	2.52	0.44
1:A:784:PRO:HB2	1:A:787:TRP:CD1	2.54	0.43
1:A:824:MET:HA	3:A:1002:GOL:H2	2.00	0.43
1:A:863:ILE:HD12	1:A:863:ILE:HA	1.94	0.42
1:A:784:PRO:HA	1:A:878:GLU:O	2.19	0.42
1:A:859:TRP:CD1	1:A:863:ILE:HD13	2.55	0.41
1:A:357:LYS:HE3	1:A:357:LYS:HB3	1.95	0.41
1:A:433:LEU:HD23	1:A:436:ARG:HH21	1.84	0.41
1:A:763[A]:SER:HG	1:A:776:SER:HG	1.65	0.41
1:A:319:MET:HB3	1:A:741:SER:HB3	2.03	0.41
1:A:603:VAL:O	1:A:603:VAL:CG1	2.69	0.40
1:A:389:ARG:HG2	1:A:390:PRO:HD2	2.03	0.40

All (1) symmetry-related close contacts are listed below. The label for Atom-2 includes the symmetry operator and encoded unit-cell translations to be applied.

Atom-1	Atom-2	Interatomic distance (Å)	Clash overlap (Å)
6:A:1447:HOH:O	6:A:1447:HOH:O[3_555]	1.99	0.21

## 5.3 Torsion angles [i](#)

### 5.3.1 Protein backbone [i](#)

In the following table, the Percentiles column shows the percent Ramachandran outliers of the chain as a percentile score with respect to all X-ray entries followed by that with respect to entries of similar resolution.

The Analysed column shows the number of residues for which the backbone conformation was analysed, and the total number of residues.

Mol	Chain	Analysed	Favoured	Allowed	Outliers	Percentiles	
1	A	586/635 (92%)	577 (98%)	9 (2%)	0	100	100

There are no Ramachandran outliers to report.

### 5.3.2 Protein sidechains [i](#)

In the following table, the Percentiles column shows the percent sidechain outliers of the chain as a percentile score with respect to all X-ray entries followed by that with respect to entries of similar resolution.

The Analysed column shows the number of residues for which the sidechain conformation was analysed, and the total number of residues.

Mol	Chain	Analysed	Rotameric	Outliers	Percentiles	
1	A	518/552 (94%)	510 (98%)	8 (2%)	65	68

All (8) residues with a non-rotameric sidechain are listed below:

Mol	Chain	Res	Type
1	A	274	ASP
1	A	288	ASN
1	A	319	MET
1	A	473	ILE
1	A	481	ARG
1	A	575	LYS
1	A	585	THR
1	A	698	LYS

Sometimes sidechains can be flipped to improve hydrogen bonding and reduce clashes. All (15) such sidechains are listed below:

Mol	Chain	Res	Type
1	A	297	ASN
1	A	339	GLN
1	A	387	ASN
1	A	548	ASN
1	A	555	GLN
1	A	602	GLN
1	A	676	ASN
1	A	693	GLN

*Continued on next page...*

*Continued from previous page...*

Mol	Chain	Res	Type
1	A	704	GLN
1	A	742	GLN
1	A	760	GLN
1	A	768	HIS
1	A	835	ASN
1	A	869	GLN
1	A	876	ASN

### 5.3.3 RNA [i](#)

There are no RNA molecules in this entry.

### 5.4 Non-standard residues in protein, DNA, RNA chains [i](#)

There are no non-standard protein/DNA/RNA residues in this entry.

### 5.5 Carbohydrates [i](#)

There are no monosaccharides in this entry.

### 5.6 Ligand geometry [i](#)

Of 8 ligands modelled in this entry, 2 are monoatomic - leaving 6 for Mogul analysis.

In the following table, the Counts columns list the number of bonds (or angles) for which Mogul statistics could be retrieved, the number of bonds (or angles) that are observed in the model and the number of bonds (or angles) that are defined in the Chemical Component Dictionary. The Link column lists molecule types, if any, to which the group is linked. The Z score for a bond length (or angle) is the number of standard deviations the observed value is removed from the expected value. A bond length (or angle) with  $|Z| > 2$  is considered an outlier worth inspection. RMSZ is the root-mean-square of all Z scores of the bond lengths (or angles).

Mol	Type	Chain	Res	Link	Bond lengths			Bond angles		
					Counts	RMSZ	# Z  > 2	Counts	RMSZ	# Z  > 2
5	V0M	A	1008	-	30,34,34	1.15	2 (6%)	43,49,49	1.63	4 (9%)
3	GOL	A	1004	-	5,5,5	0.41	0	5,5,5	0.35	0
3	GOL	A	1006	-	5,5,5	0.34	0	5,5,5	0.36	0
4	PEG	A	1003	-	6,6,6	0.54	0	5,5,5	0.15	0
4	PEG	A	1005	-	6,6,6	0.54	0	5,5,5	0.43	0
3	GOL	A	1002	-	5,5,5	0.27	0	5,5,5	0.35	0

In the following table, the Chirals column lists the number of chiral outliers, the number of chiral centers analysed, the number of these observed in the model and the number defined in the Chemical Component Dictionary. Similar counts are reported in the Torsion and Rings columns. '-' means no outliers of that kind were identified.

Mol	Type	Chain	Res	Link	Chirals	Torsions	Rings
5	V0M	A	1008	-	-	0/13/29/29	0/4/4/4
3	GOL	A	1004	-	-	4/4/4/4	-
3	GOL	A	1006	-	-	2/4/4/4	-
4	PEG	A	1003	-	-	2/4/4/4	-
4	PEG	A	1005	-	-	2/4/4/4	-
3	GOL	A	1002	-	-	4/4/4/4	-

All (2) bond length outliers are listed below:

Mol	Chain	Res	Type	Atoms	Z	Observed(Å)	Ideal(Å)
5	A	1008	V0M	C13-C12	2.22	1.43	1.40
5	A	1008	V0M	C14-C15	2.03	1.43	1.40

All (4) bond angle outliers are listed below:

Mol	Chain	Res	Type	Atoms	Z	Observed(°)	Ideal(°)
5	A	1008	V0M	C14-N2-C13	7.33	138.31	123.01
5	A	1008	V0M	C1-N1-C10	3.96	131.19	123.66
5	A	1008	V0M	C12-C13-N2	2.56	120.63	118.60
5	A	1008	V0M	C14-C15-CL2	2.17	121.76	119.27

There are no chirality outliers.

All (14) torsion outliers are listed below:

Mol	Chain	Res	Type	Atoms
3	A	1002	GOL	O1-C1-C2-C3
3	A	1002	GOL	C1-C2-C3-O3
3	A	1004	GOL	O1-C1-C2-C3
3	A	1004	GOL	C1-C2-C3-O3
4	A	1005	PEG	O1-C1-C2-O2
3	A	1002	GOL	O1-C1-C2-O2
3	A	1002	GOL	O2-C2-C3-O3
3	A	1004	GOL	O1-C1-C2-O2
3	A	1004	GOL	O2-C2-C3-O3
4	A	1005	PEG	O2-C3-C4-O4
4	A	1003	PEG	O2-C3-C4-O4

*Continued on next page...*

*Continued from previous page...*

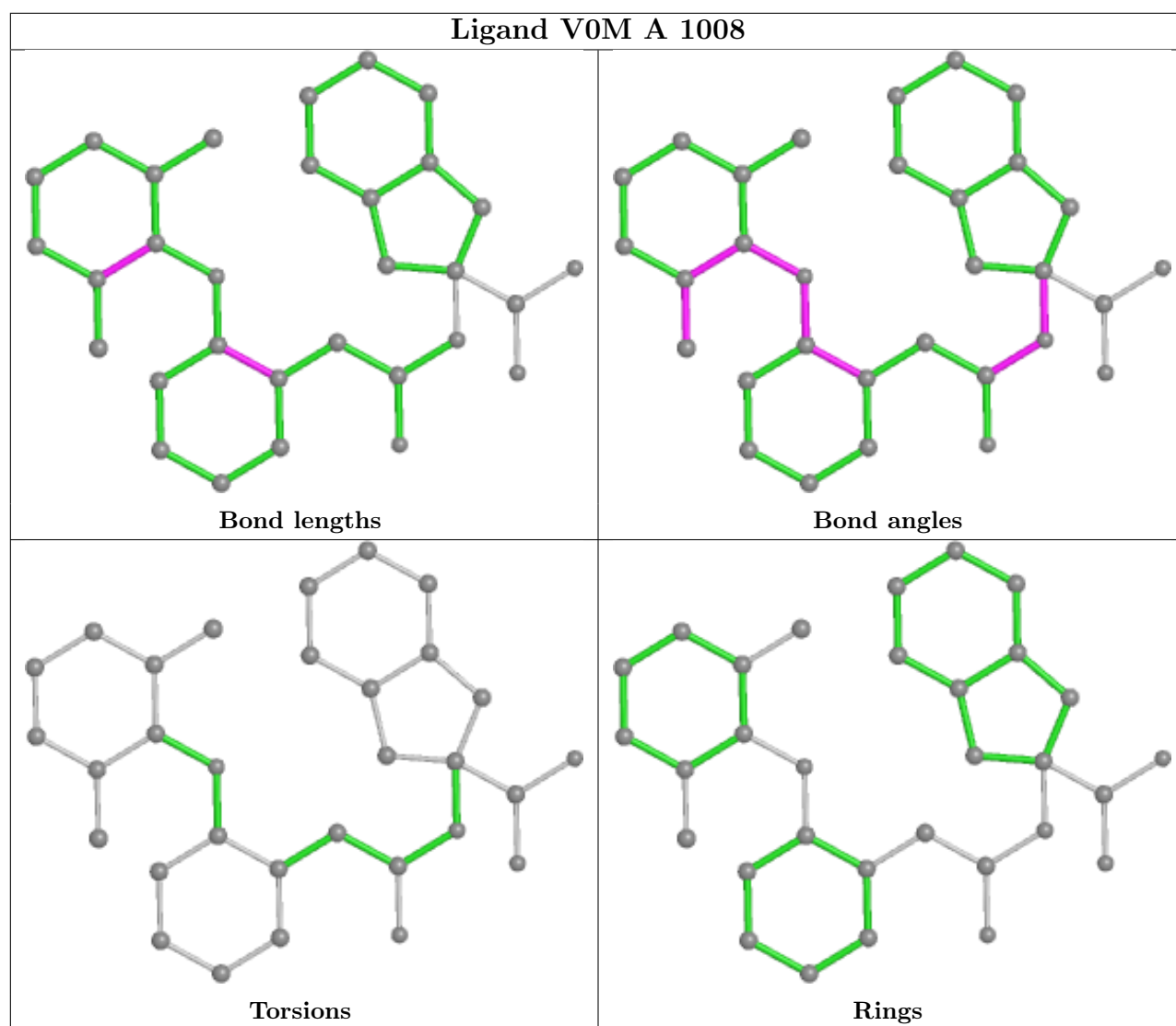
Mol	Chain	Res	Type	Atoms
3	A	1006	GOL	O1-C1-C2-C3
3	A	1006	GOL	O1-C1-C2-O2
4	A	1003	PEG	C4-C3-O2-C2

There are no ring outliers.

4 monomers are involved in 10 short contacts:

Mol	Chain	Res	Type	Clashes	Symm-Clashes
3	A	1004	GOL	2	0
3	A	1006	GOL	1	0
4	A	1005	PEG	6	0
3	A	1002	GOL	1	0

The following is a two-dimensional graphical depiction of Mogul quality analysis of bond lengths, bond angles, torsion angles, and ring geometry for all instances of the Ligand of Interest. In addition, ligands with molecular weight > 250 and outliers as shown on the validation Tables will also be included. For torsion angles, if less than 5% of the Mogul distribution of torsion angles is within 10 degrees of the torsion angle in question, then that torsion angle is considered an outlier. Any bond that is central to one or more torsion angles identified as an outlier by Mogul will be highlighted in the graph. For rings, the root-mean-square deviation (RMSD) between the ring in question and similar rings identified by Mogul is calculated over all ring torsion angles. If the average RMSD is greater than 60 degrees and the minimal RMSD between the ring in question and any Mogul-identified rings is also greater than 60 degrees, then that ring is considered an outlier. The outliers are highlighted in purple. The color gray indicates Mogul did not find sufficient equivalents in the CSD to analyse the geometry.



## 5.7 Other polymers [i](#)

There are no such residues in this entry.

## 5.8 Polymer linkage issues [i](#)

There are no chain breaks in this entry.

## 6 Fit of model and data [i](#)

### 6.1 Protein, DNA and RNA chains [i](#)

In the following table, the column labelled ‘#RSRZ> 2’ contains the number (and percentage) of RSRZ outliers, followed by percent RSRZ outliers for the chain as percentile scores relative to all X-ray entries and entries of similar resolution. The OWAB column contains the minimum, median, 95<sup>th</sup> percentile and maximum values of the occupancy-weighted average B-factor per residue. The column labelled ‘Q< 0.9’ lists the number of (and percentage) of residues with an average occupancy less than 0.9.

Mol	Chain	Analysed	<RSRZ>	#RSRZ>2	OWAB(Å <sup>2</sup> )	Q<0.9
1	A	589/635 (92%)	0.22	22 (3%) 41 41	28, 44, 73, 86	0

All (22) RSRZ outliers are listed below:

Mol	Chain	Res	Type	RSRZ
1	A	601	GLY	6.2
1	A	743	GLY	6.1
1	A	745	GLY	5.6
1	A	271	ASP	5.0
1	A	744	ALA	4.8
1	A	603	VAL	4.5
1	A	272	ASN	4.4
1	A	418	TRP	4.3
1	A	600	SER	3.9
1	A	742	GLN	3.5
1	A	746	TRP	3.1
1	A	599	GLY	3.0
1	A	408	MET	2.9
1	A	451	TYR	2.5
1	A	795	TRP	2.5
1	A	348	PHE	2.4
1	A	333	VAL	2.4
1	A	847	CYS	2.3
1	A	274	ASP	2.3
1	A	473	ILE	2.1
1	A	319	MET	2.0
1	A	419	ASP	2.0

### 6.2 Non-standard residues in protein, DNA, RNA chains [i](#)

There are no non-standard protein/DNA/RNA residues in this entry.



### 6.3 Carbohydrates

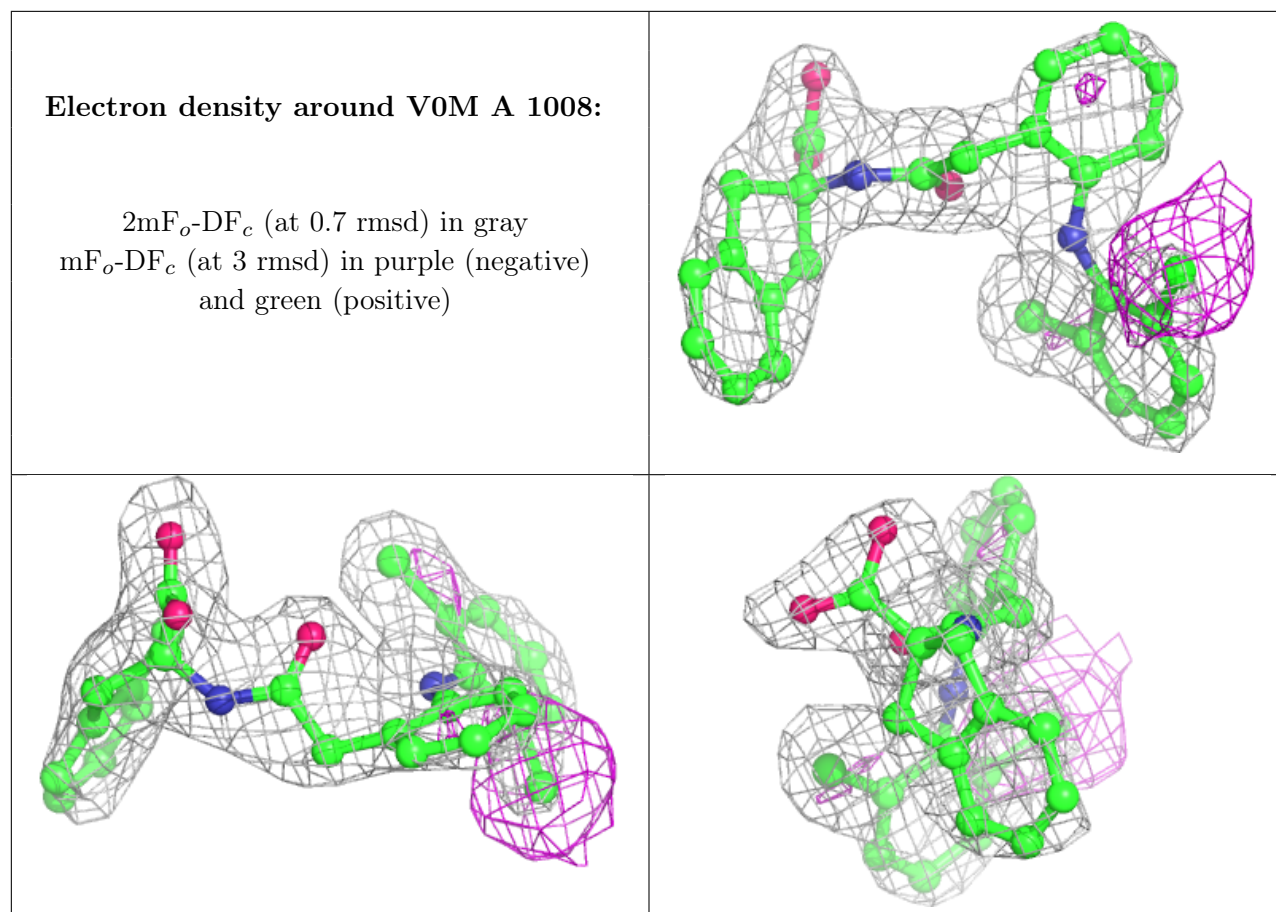
There are no monosaccharides in this entry.

### 6.4 Ligands

In the following table, the Atoms column lists the number of modelled atoms in the group and the number defined in the chemical component dictionary. The B-factors column lists the minimum, median, 95<sup>th</sup> percentile and maximum values of B factors of atoms in the group. The column labelled 'Q< 0.9' lists the number of atoms with occupancy less than 0.9.

Mol	Type	Chain	Res	Atoms	RSCC	RSR	B-factors( $\text{\AA}^2$ )	Q<0.9
4	PEG	A	1005	7/7	0.77	0.30	75,75,76,76	0
5	V0M	A	1008	31/31	0.82	0.28	63,64,67,69	0
3	GOL	A	1002	6/6	0.85	0.28	57,57,58,58	0
3	GOL	A	1006	6/6	0.87	0.38	64,65,65,65	0
3	GOL	A	1004	6/6	0.89	0.16	62,63,63,63	0
4	PEG	A	1003	7/7	0.92	0.11	54,54,56,56	0
2	ZN	A	1001	1/1	0.99	0.18	36,36,36,36	0
2	ZN	A	1007	1/1	1.00	0.12	41,41,41,41	0

The following is a graphical depiction of the model fit to experimental electron density of all instances of the Ligand of Interest. In addition, ligands with molecular weight > 250 and outliers as shown on the geometry validation Tables will also be included. Each fit is shown from different orientation to approximate a three-dimensional view.



## 6.5 Other polymers [i](#)

There are no such residues in this entry.