



wwPDB X-ray Structure Validation Summary Report ⓘ

May 13, 2020 – 12:19 am BST

PDB ID : 2XGM
Title : Substrate and product analogues as human O-GlcNAc transferase inhibitors.
Authors : Dorfmueller, H.C.; Borodkin, V.S.; Blair, D.E.; Pathak, S.; Navratilova, I.;
van Aalten, D.M.
Deposited on : 2010-06-07
Resolution : 2.55 Å(reported)

This is a wwPDB X-ray Structure Validation Summary Report for a publicly released PDB entry.

We welcome your comments at validation@mail.wwpdb.org

A user guide is available at

<https://www.wwpdb.org/validation/2017/XrayValidationReportHelp>

with specific help available everywhere you see the ⓘ symbol.

The following versions of software and data (see [references ⓘ](#)) were used in the production of this report:

MolProbity : 4.02b-467
Mogul : 1.8.5 (274361), CSD as541be (2020)
Xtriage (Phenix) : 1.13
EDS : 2.11
Percentile statistics : 20191225.v01 (using entries in the PDB archive December 25th 2019)
Refmac : 5.8.0158
CCP4 : 7.0.044 (Gargrove)
Ideal geometry (proteins) : Engh & Huber (2001)
Ideal geometry (DNA, RNA) : Parkinson et al. (1996)
Validation Pipeline (wwPDB-VP) : 2.11

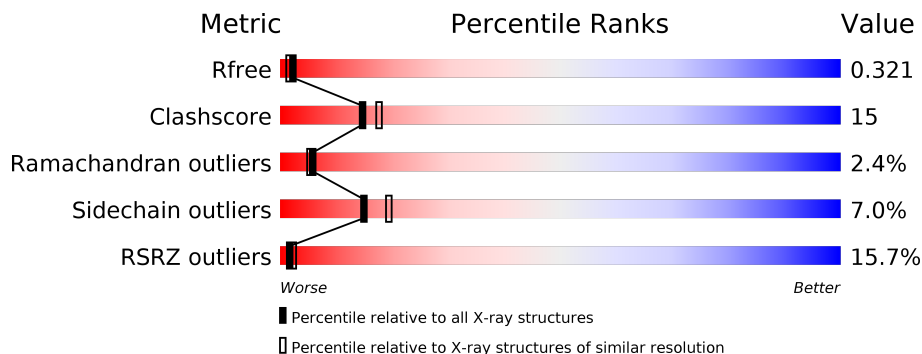
1 Overall quality at a glance i

The following experimental techniques were used to determine the structure:

X-RAY DIFFRACTION

The reported resolution of this entry is 2.55 Å.

Percentile scores (ranging between 0-100) for global validation metrics of the entry are shown in the following graphic. The table shows the number of entries on which the scores are based.



Metric	Whole archive (#Entries)	Similar resolution (#Entries, resolution range(Å))
R_{free}	130704	1284 (2.56-2.52)
Clashscore	141614	1332 (2.56-2.52)
Ramachandran outliers	138981	1315 (2.56-2.52)
Sidechain outliers	138945	1315 (2.56-2.52)
RSRZ outliers	127900	1272 (2.56-2.52)

The table below summarises the geometric issues observed across the polymeric chains and their fit to the electron density. The red, orange, yellow and green segments on the lower bar indicate the fraction of residues that contain outliers for ≥ 3 , 2, 1 and 0 types of geometric quality criteria respectively. A grey segment represents the fraction of residues that are not modelled. The numeric value for each fraction is indicated below the corresponding segment, with a dot representing fractions $\leq 5\%$. The upper red bar (where present) indicates the fraction of residues that have poor fit to the electron density. The numeric value is given above the bar.

Mol	Chain	Length	Quality of chain
1	A	568	
1	B	568	

2 Entry composition [i](#)

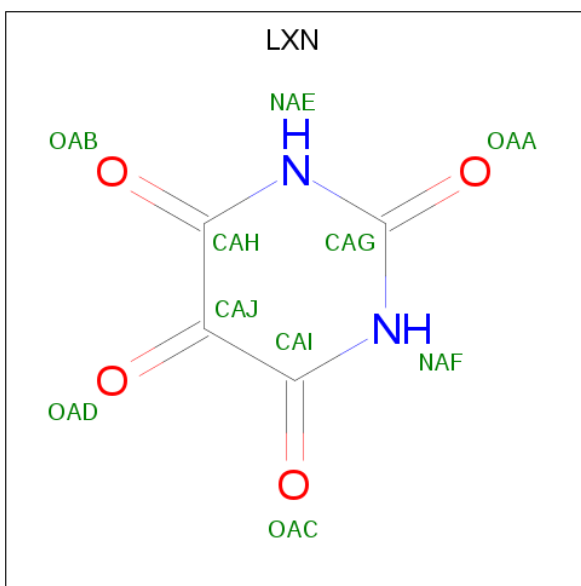
There are 3 unique types of molecules in this entry. The entry contains 8113 atoms, of which 0 are hydrogens and 0 are deuteriums.

In the tables below, the ZeroOcc column contains the number of atoms modelled with zero occupancy, the AltConf column contains the number of residues with at least one atom in alternate conformation and the Trace column contains the number of residues modelled with at most 2 atoms.

- Molecule 1 is a protein called XCOGT.

Mol	Chain	Residues	Atoms					ZeroOcc	AltConf	Trace
			Total	C	N	O	S			
1	A	512	Total 3923	C 2480	N 730	O 700	S 13	0	2	0
1	B	542	Total 4112	C 2595	N 761	O 740	S 16	0	0	0

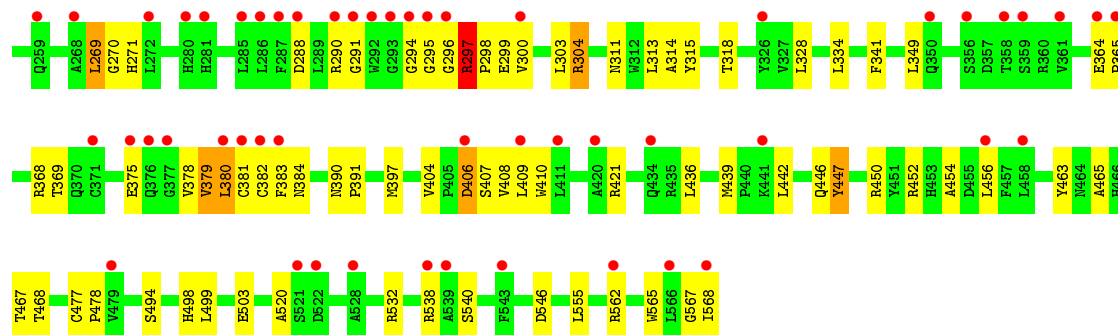
- Molecule 2 is ALLOXAN (three-letter code: LXN) (formula: C₄H₂N₂O₄).



Mol	Chain	Residues	Atoms				ZeroOcc	AltConf
			Total	C	N	O		
2	A	1	Total 10	C 4	N 2	O 4	0	0
2	B	1	Total 10	C 4	N 2	O 4	0	0

- Molecule 3 is water.

Mol	Chain	Residues	Atoms		ZeroOcc	AltConf
3	A	21	Total 21	O 21	0	0
3	B	37	Total 37	O 37	0	0



4 Data and refinement statistics

Property	Value	Source
Space group	P 21 21 21	Depositor
Cell constants a, b, c, α , β , γ	83.53Å 99.98Å 157.20Å 90.00° 90.00° 90.00°	Depositor
Resolution (Å)	20.00 – 2.55 20.00 – 2.55	Depositor EDS
% Data completeness (in resolution range)	100.0 (20.00-2.55) 97.7 (20.00-2.55)	Depositor EDS
R_{merge}	0.05	Depositor
R_{sym}	(Not available)	Depositor
$\langle I/\sigma(I) \rangle$ ¹	2.94 (at 2.56Å)	Xtrriage
Refinement program	REFMAC 5.5.0109	Depositor
R, R_{free}	0.267 , 0.309 0.278 , 0.321	Depositor DCC
R_{free} test set	1334 reflections (3.13%)	wwPDB-VP
Wilson B-factor (Å ²)	74.6	Xtrriage
Anisotropy	0.227	Xtrriage
Bulk solvent k_{sol} (e/Å ³), B_{sol} (Å ²)	0.31 , 66.7	EDS
L-test for twinning ²	$\langle L \rangle = 0.51$, $\langle L^2 \rangle = 0.35$	Xtrriage
Estimated twinning fraction	No twinning to report.	Xtrriage
F_o, F_c correlation	0.93	EDS
Total number of atoms	8113	wwPDB-VP
Average B, all atoms (Å ²)	39.0	wwPDB-VP

Xtrriage's analysis on translational NCS is as follows: *The largest off-origin peak in the Patterson function is 3.64% of the height of the origin peak. No significant pseudotranslation is detected.*

¹Intensities estimated from amplitudes.

²Theoretical values of $\langle |L| \rangle$, $\langle L^2 \rangle$ for acentric reflections are 0.5, 0.333 respectively for untwinned datasets, and 0.375, 0.2 for perfectly twinned datasets.

5 Model quality [i](#)

5.1 Standard geometry [i](#)

Bond lengths and bond angles in the following residue types are not validated in this section: LXN

The Z score for a bond length (or angle) is the number of standard deviations the observed value is removed from the expected value. A bond length (or angle) with $|Z| > 5$ is considered an outlier worth inspection. RMSZ is the root-mean-square of all Z scores of the bond lengths (or angles).

Mol	Chain	Bond lengths		Bond angles	
		RMSZ	# $ Z > 5$	RMSZ	# $ Z > 5$
1	A	0.78	1/4031 (0.0%)	0.87	8/5501 (0.1%)
1	B	0.64	0/4217	0.83	7/5753 (0.1%)
All	All	0.71	1/8248 (0.0%)	0.85	15/11254 (0.1%)

Chiral center outliers are detected by calculating the chiral volume of a chiral center and verifying if the center is modelled as a planar moiety or with the opposite hand. A planarity outlier is detected by checking planarity of atoms in a peptide group, atoms in a mainchain group or atoms of a sidechain that are expected to be planar.

Mol	Chain	#Chirality outliers	#Planarity outliers
1	A	0	3
1	B	0	5
All	All	0	8

All (1) bond length outliers are listed below:

Mol	Chain	Res	Type	Atoms	Z	Observed(Å)	Ideal(Å)
1	A	139	CYS	CB-SG	-5.97	1.72	1.81

The worst 5 of 15 bond angle outliers are listed below:

Mol	Chain	Res	Type	Atoms	Z	Observed(°)	Ideal(°)
1	B	562	ARG	NE-CZ-NH1	-9.71	115.45	120.30
1	A	562	ARG	NE-CZ-NH1	8.90	124.75	120.30
1	B	562	ARG	NE-CZ-NH2	8.28	124.44	120.30
1	A	562	ARG	NE-CZ-NH2	-8.16	116.22	120.30
1	A	297	ARG	NE-CZ-NH2	-7.76	116.42	120.30

There are no chirality outliers.

5 of 8 planarity outliers are listed below:

Mol	Chain	Res	Type	Group
1	A	203	LYS	Peptide
1	A	296	GLY	Peptide
1	A	406	ASP	Peptide
1	B	63	LEU	Peptide
1	B	64	GLY	Peptide

5.2 Too-close contacts [i](#)

In the following table, the Non-H and H(model) columns list the number of non-hydrogen atoms and hydrogen atoms in the chain respectively. The H(added) column lists the number of hydrogen atoms added and optimized by MolProbity. The Clashes column lists the number of clashes within the asymmetric unit, whereas Symm-Clashes lists symmetry related clashes.

Mol	Chain	Non-H	H(model)	H(added)	Clashes	Symm-Clashes
1	A	3923	0	3855	116	0
1	B	4112	0	4043	134	0
2	A	10	0	2	0	0
2	B	10	0	2	0	0
3	A	21	0	0	4	0
3	B	37	0	0	10	0
All	All	8113	0	7902	244	0

The all-atom clashscore is defined as the number of clashes found per 1000 atoms (including hydrogen atoms). The all-atom clashscore for this structure is 15.

The worst 5 of 244 close contacts within the same asymmetric unit are listed below, sorted by their clash magnitude.

Atom-1	Atom-2	Interatomic distance (Å)	Clash overlap (Å)
1:B:442:LEU:HB3	3:B:2031:HOH:O	1.31	1.26
1:A:67:ARG:HD2	3:A:2001:HOH:O	1.44	1.15
1:B:382:CYS:HB2	1:B:397:MET:HE1	1.24	1.12
1:B:40:THR:HA	1:B:41:ALA:HB3	1.44	0.99
1:B:382:CYS:HB2	1:B:397:MET:CE	1.93	0.98

There are no symmetry-related clashes.

5.3 Torsion angles [i](#)

5.3.1 Protein backbone [i](#)

In the following table, the Percentiles column shows the percent Ramachandran outliers of the chain as a percentile score with respect to all X-ray entries followed by that with respect to entries of similar resolution.

The Analysed column shows the number of residues for which the backbone conformation was analysed, and the total number of residues.

Mol	Chain	Analysed	Favoured	Allowed	Outliers	Percentiles	
1	A	512/568 (90%)	472 (92%)	32 (6%)	8 (2%)	9	12
1	B	540/568 (95%)	490 (91%)	33 (6%)	17 (3%)	4	3
All	All	1052/1136 (93%)	962 (91%)	65 (6%)	25 (2%)	6	5

5 of 25 Ramachandran outliers are listed below:

Mol	Chain	Res	Type
1	A	71	GLN
1	A	159	VAL
1	A	296	GLY
1	B	49	GLY
1	B	65	ARG

5.3.2 Protein sidechains [i](#)

In the following table, the Percentiles column shows the percent sidechain outliers of the chain as a percentile score with respect to all X-ray entries followed by that with respect to entries of similar resolution.

The Analysed column shows the number of residues for which the sidechain conformation was analysed, and the total number of residues.

Mol	Chain	Analysed	Rotameric	Outliers	Percentiles	
1	A	390/429 (91%)	364 (93%)	26 (7%)	16	21
1	B	407/429 (95%)	377 (93%)	30 (7%)	13	18
All	All	797/858 (93%)	741 (93%)	56 (7%)	15	19

5 of 56 residues with a non-rotameric sidechain are listed below:

Mol	Chain	Res	Type
1	A	562	ARG

Continued on next page...

Continued from previous page...

Mol	Chain	Res	Type
1	B	65	ARG
1	B	447	TYR
1	B	29	LEU
1	B	40	THR

Some sidechains can be flipped to improve hydrogen bonding and reduce clashes. 5 of 26 such sidechains are listed below:

Mol	Chain	Res	Type
1	B	47	GLN
1	B	82	GLN
1	B	434	GLN
1	B	56	HIS
1	B	71	GLN

5.3.3 RNA [i](#)

There are no RNA molecules in this entry.

5.4 Non-standard residues in protein, DNA, RNA chains [i](#)

There are no non-standard protein/DNA/RNA residues in this entry.

5.5 Carbohydrates [i](#)

There are no carbohydrates in this entry.

5.6 Ligand geometry [i](#)

2 ligands are modelled in this entry.

In the following table, the Counts columns list the number of bonds (or angles) for which Mogul statistics could be retrieved, the number of bonds (or angles) that are observed in the model and the number of bonds (or angles) that are defined in the Chemical Component Dictionary. The Link column lists molecule types, if any, to which the group is linked. The Z score for a bond length (or angle) is the number of standard deviations the observed value is removed from the expected value. A bond length (or angle) with $|Z| > 2$ is considered an outlier worth inspection. RMSZ is the root-mean-square of all Z scores of the bond lengths (or angles).

Mol	Type	Chain	Res	Link	Bond lengths			Bond angles		
					Counts	RMSZ	# Z > 2	Counts	RMSZ	# Z > 2
2	LXN	A	1569	-	10,10,10	6.52	2 (20%)	14,14,14	2.25	5 (35%)
2	LXN	B	1569	-	10,10,10	6.52	3 (30%)	14,14,14	2.28	3 (21%)

In the following table, the Chirals column lists the number of chiral outliers, the number of chiral centers analysed, the number of these observed in the model and the number defined in the Chemical Component Dictionary. Similar counts are reported in the Torsion and Rings columns. '-' means no outliers of that kind were identified.

Mol	Type	Chain	Res	Link	Chirals	Torsions	Rings
2	LXN	A	1569	-	-	-	0/1/1/1
2	LXN	B	1569	-	-	-	0/1/1/1

All (5) bond length outliers are listed below:

Mol	Chain	Res	Type	Atoms	Z	Observed(Å)	Ideal(Å)
2	A	1569	LXN	CAI-CAJ	-15.20	1.39	1.54
2	B	1569	LXN	CAI-CAJ	-14.56	1.39	1.54
2	B	1569	LXN	CAH-CAJ	-14.06	1.40	1.54
2	A	1569	LXN	CAH-CAJ	-13.72	1.40	1.54
2	B	1569	LXN	CAG-NAE	2.44	1.41	1.37

The worst 5 of 8 bond angle outliers are listed below:

Mol	Chain	Res	Type	Atoms	Z	Observed(°)	Ideal(°)
2	B	1569	LXN	CAH-NAE-CAG	-5.31	118.69	126.34
2	A	1569	LXN	CAI-NAF-CAG	-4.55	119.78	126.34
2	B	1569	LXN	CAI-NAF-CAG	-4.52	119.83	126.34
2	A	1569	LXN	CAH-NAE-CAG	-4.30	120.14	126.34
2	B	1569	LXN	NAE-CAG-NAF	2.95	120.54	115.80

There are no chirality outliers.

There are no torsion outliers.

There are no ring outliers.

No monomer is involved in short contacts.

5.7 Other polymers [\(i\)](#)

There are no such residues in this entry.

5.8 Polymer linkage issues

There are no chain breaks in this entry.

6 Fit of model and data [i](#)

6.1 Protein, DNA and RNA chains [i](#)

In the following table, the column labelled ‘#RSRZ> 2’ contains the number (and percentage) of RSRZ outliers, followed by percent RSRZ outliers for the chain as percentile scores relative to all X-ray entries and entries of similar resolution. The OWAB column contains the minimum, median, 95th percentile and maximum values of the occupancy-weighted average B-factor per residue. The column labelled ‘Q< 0.9’ lists the number of (and percentage) of residues with an average occupancy less than 0.9.

Mol	Chain	Analysed	<RSRZ>	#RSRZ>2	OWAB(Å ²)	Q<0.9
1	A	512/568 (90%)	0.45	52 (10%) 6 8	35, 38, 42, 74	0
1	B	542/568 (95%)	1.16	114 (21%) 1 0	35, 38, 52, 74	0
All	All	1054/1136 (92%)	0.81	166 (15%) 2 2	35, 38, 48, 74	0

The worst 5 of 166 RSRZ outliers are listed below:

Mol	Chain	Res	Type	RSRZ
1	B	39	THR	13.8
1	B	44	MET	8.7
1	B	285	LEU	7.8
1	B	293	GLY	7.3
1	B	52	LEU	7.1

6.2 Non-standard residues in protein, DNA, RNA chains [i](#)

There are no non-standard protein/DNA/RNA residues in this entry.

6.3 Carbohydrates [i](#)

There are no carbohydrates in this entry.

6.4 Ligands [i](#)

In the following table, the Atoms column lists the number of modelled atoms in the group and the number defined in the chemical component dictionary. The B-factors column lists the minimum, median, 95th percentile and maximum values of B factors of atoms in the group. The column labelled ‘Q< 0.9’ lists the number of atoms with occupancy less than 0.9.

Mol	Type	Chain	Res	Atoms	RSCC	RSR	B-factors(\AA^2)	Q<0.9
2	LXN	A	1569	10/10	0.89	0.21	23,26,27,29	0
2	LXN	B	1569	10/10	0.90	0.21	52,54,55,55	0

6.5 Other polymers [i](#)

There are no such residues in this entry.