



wwPDB EM Validation Summary Report ⓘ

Aug 1, 2023 – 10:21 PM JST

PDB ID : 7XG4
EMDB ID : EMD-33185
Title : CryoEM structure of type IV-A CasDinG bound NTS-nicked Csf-crRNA-dsDNA quaternary complex in a second state
Authors : Zhang, J.T.; Cui, N.; Huang, H.D.; Jia, N.
Deposited on : 2022-04-02
Resolution : 3.70 Å(reported)

This is a wwPDB EM Validation Summary Report for a publicly released PDB entry.

We welcome your comments at validation@mail.wwpdb.org

A user guide is available at

<https://www.wwpdb.org/validation/2017/EMValidationReportHelp>

with specific help available everywhere you see the ⓘ symbol.

The types of validation reports are described at

<http://www.wwpdb.org/validation/2017/FAQs#types>.

The following versions of software and data (see [references ⓘ](#)) were used in the production of this report:

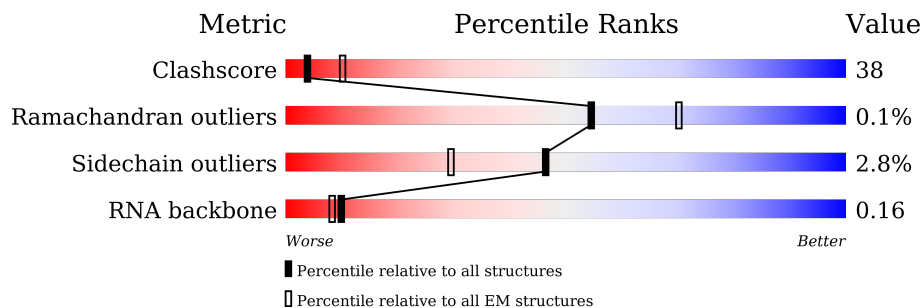
EMDB validation analysis : 0.0.1.dev50
Mogul : 1.8.5 (274361), CSD as541be (2020)
MolProbity : 4.02b-467
Percentile statistics : 20191225.v01 (using entries in the PDB archive December 25th 2019)
MapQ : 1.9.9
Ideal geometry (proteins) : Engh & Huber (2001)
Ideal geometry (DNA, RNA) : Parkinson et al. (1996)
Validation Pipeline (wwPDB-VP) : 2.34

1 Overall quality at a glance

The following experimental techniques were used to determine the structure:
ELECTRON MICROSCOPY

The reported resolution of this entry is 3.70 Å.

Percentile scores (ranging between 0-100) for global validation metrics of the entry are shown in the following graphic. The table shows the number of entries on which the scores are based.



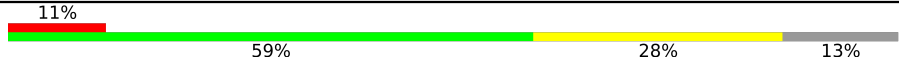

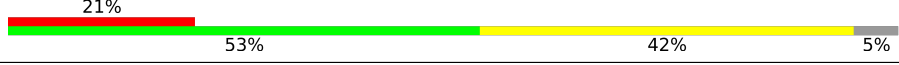
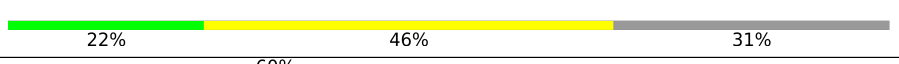

Metric	Whole archive (#Entries)	EM structures (#Entries)
Clashscore	158937	4297
Ramachandran outliers	154571	4023
Sidechain outliers	154315	3826
RNA backbone	4643	859

The table below summarises the geometric issues observed across the polymeric chains and their fit to the map. The red, orange, yellow and green segments of the bar indicate the fraction of residues that contain outliers for ≥ 3 , 2, 1 and 0 types of geometric quality criteria respectively. A grey segment represents the fraction of residues that are not modelled. The numeric value for each fraction is indicated below the corresponding segment, with a dot representing fractions $\leq 5\%$. The upper red bar (where present) indicates the fraction of residues that have poor fit to the EM map (all-atom inclusion $< 40\%$). The numeric value is given above the bar.

Mol	Chain	Length	Quality of chain
1	A	253	 6% 51% 43% • 5%
2	B	220	 5% 57% 40% •
3	C	348	 63% 31% • 5%
3	D	348	 66% 28% • 5%
3	E	348	 54% 38% • 7%
3	F	348	 5% 51% 41% • 7%
3	G	348	 6% 47% 32% • 20%

Continued on next page...

Continued from previous page...

Mol	Chain	Length	Quality of chain
4	H	268	
5	I	61	
6	J	38	
7	K	54	
8	L	626	

The following table lists non-polymeric compounds, carbohydrate monomers and non-standard residues in protein, DNA, RNA chains that are outliers for geometric or electron-density-fit criteria:

Mol	Type	Chain	Res	Chirality	Geometry	Clashes	Electron density
5	23G	I	61	-	-	X	-

2 Entry composition

There are 9 unique types of molecules in this entry. The entry contains 24769 atoms, of which 0 are hydrogens and 0 are deuteriums.

In the tables below, the AltConf column contains the number of residues with at least one atom in alternate conformation and the Trace column contains the number of residues modelled with at most 2 atoms.

- Molecule 1 is a protein called Csf1.

Mol	Chain	Residues	Atoms					AltConf	Trace
			Total	C	N	O	S		
1	A	241	1897	1202	336	347	12	0	0

- Molecule 2 is a protein called Csf3.

Mol	Chain	Residues	Atoms					AltConf	Trace
			Total	C	N	O	S		
2	B	219	1709	1080	316	305	8	0	0

- Molecule 3 is a protein called Csf2.

Mol	Chain	Residues	Atoms					AltConf	Trace
			Total	C	N	O	S		
3	C	329	2488	1570	439	467	12	0	0
3	D	331	2503	1580	441	470	12	0	0
3	E	324	2450	1546	431	461	12	0	0
3	F	324	2450	1546	431	461	12	0	0
3	G	280	2131	1352	370	398	11	0	0

- Molecule 4 is a protein called Csf5.

Mol	Chain	Residues	Atoms					AltConf	Trace
			Total	C	N	O	S		
4	H	234	1800	1149	322	322	7	0	0

- Molecule 5 is a RNA chain called crRNA.

Mol	Chain	Residues	Atoms					AltConf	Trace
			Total	C	N	O	P		
5	I	61	1317	586	247	423	61	0	0

- Molecule 6 is a DNA chain called NTS.

Mol	Chain	Residues	Atoms					AltConf	Trace
			Total	C	N	O	P		
6	J	36	722	355	98	233	36	0	0

- Molecule 7 is a DNA chain called TS.

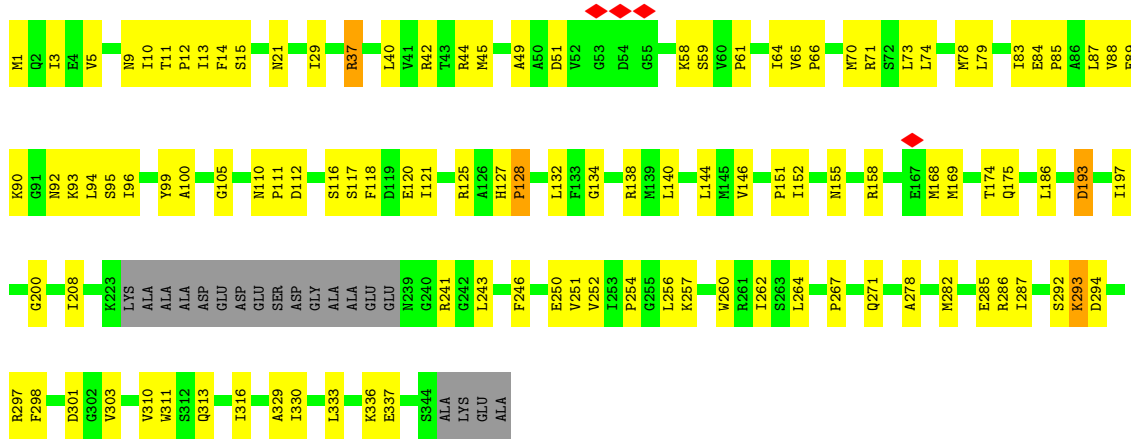
Mol	Chain	Residues	Atoms					AltConf	Trace
			Total	C	N	O	P		
7	K	37	759	361	137	224	37	0	0

- Molecule 8 is a protein called Csf4.

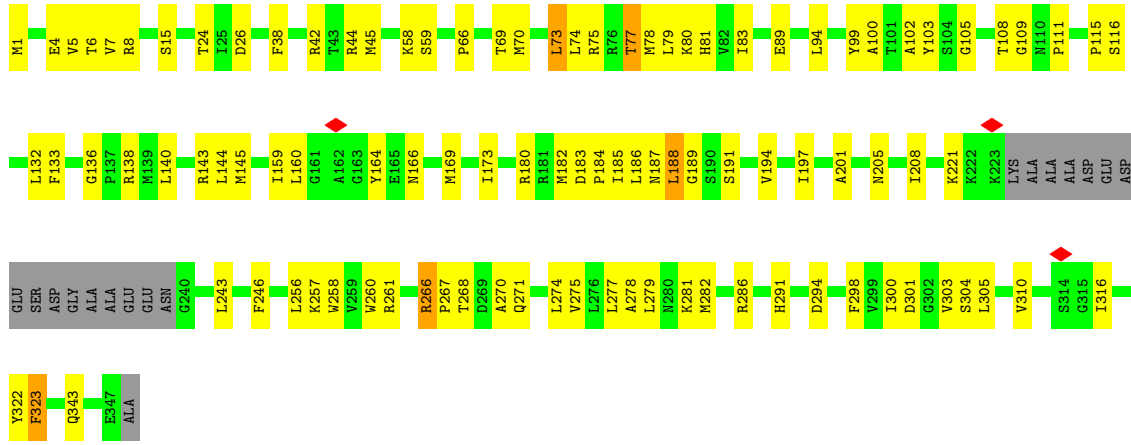
Mol	Chain	Residues	Atoms					AltConf	Trace
			Total	C	N	O	S		
8	L	594	4542	2872	817	834	19	0	0

- Molecule 9 is ZINC ION (three-letter code: ZN) (formula: Zn) (labeled as "Ligand of Interest" by depositor).

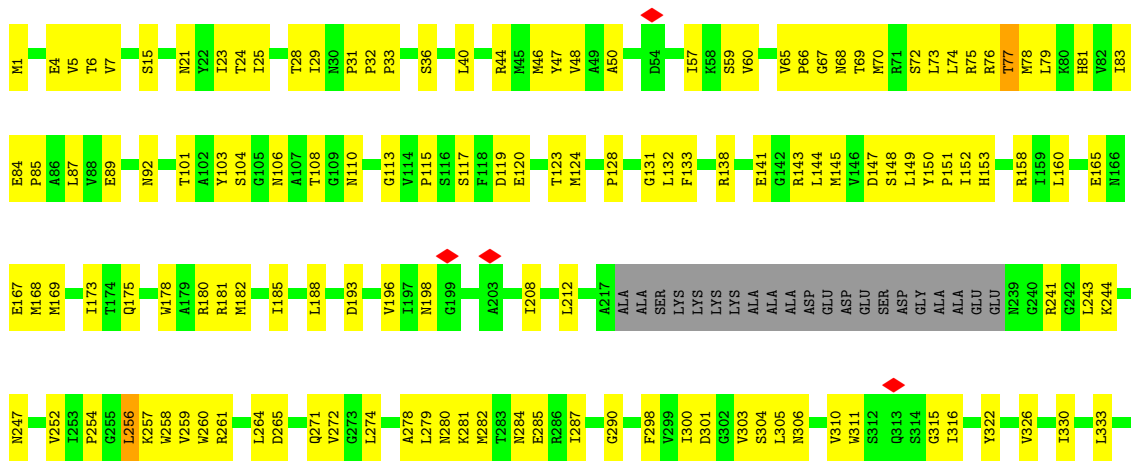
Mol	Chain	Residues	Atoms		AltConf
9	A	1	Total	Zn	0
			1	1	



• Molecule 3: Csf2



• Molecule 3: Csf2



C193	R256	T316	G376	E443	K509	K597
M197	P257	L317	L377	V444	A510	N598
L198	L258	G318	M378	A445	G511	L599
H201	M259	A319	N379	T446	I512	V600
R202	R260	L320	A380	E447	R513	V601
M204	T261	P321	T381	C448	F514	L602
M205	I262	T322	G382	A449	V515	
Q206	E263	K323	G383	Q450	L519	
M207	G264	G324	A384	T451	A522	
R208	LEU	M325	T385	I452	G525	
GLY	GLY	S326	L386	Q453		
LEU	SER	R327	V387	G454		
GLY	ARG	D328	S388	V455		
ASN	GLY	A329	L391	A456		
ASP	LYS	R330	F392	S457		
GLU	PRO	R331	T393	T458		
GLU	ALA	S332	T394	A459		
LEU	D275	I333	G395	T463		
ASP	A276	R334	D396	L464		
GLU	L277	I335	N397	C467		
PRO	K278	A336	G398	T468		
THR	E279	T337	S399	S469		
GLY	L280	R338	L400	Y470		
L224	F281	A339	T401	Q471		
S225	T282	A340	L405	M472		
L226	Q283	N341	E406	T473		
P227	M284	D342	V407	E474		
H228	Q285	A343	P408	L475		
F229	V286	L344	T409	L476		
I230	A287	S345	E410	A477		
D231	SER	G346	R411	G478		
T232	ALA	H347	F414	R479		
L233	ARG	S348	L415	L480		
I234	SER	R349	P416	G481		
V235	T292	L350	P417	A482		
D236	N293	R351	V418	A483		
E237	T294	I352	A421	L484		
A238	S295	V353	A425	G485		
H239	L296	V354	L428	D486		
L240	N297	T355	L429	R487		
L241	V298	P356	H429	L488		
E242	P299	V357	H430	Q491		
Q243	L300	H358	K431	S492		
A244	S301	S359	E432	K493		
F245	D302	Y360	F433	T494		
A246	V303	P361	C434	S495		
S247	P304	M362	A435	S496		
Y248	E305	L363	A436	A497		
Y249	L306	L364	H436	A498		
T250	I307	S365	E437	T499		
H251	P308	G366	P438	C500		
T252	A309	R367	D439	Q503		
L253	L310	S368	D440	A506		
R254	K311	N369	S441	K507		
L255	D312	L370	P442	H508		
	T313	Q371				
	V314	R372				
	K315	L373				
		L374				
		L375				

4 Experimental information

Property	Value	Source
EM reconstruction method	SINGLE PARTICLE	Depositor
Imposed symmetry	POINT, Not provided	
Number of particles used	8882	Depositor
Resolution determination method	FSC 0.143 CUT-OFF	Depositor
CTF correction method	PHASE FLIPPING ONLY	Depositor
Microscope	FEI TITAN KRIOS	Depositor
Voltage (kV)	300	Depositor
Electron dose ($e^-/\text{\AA}^2$)	50	Depositor
Minimum defocus (nm)	1500	Depositor
Maximum defocus (nm)	2500	Depositor
Magnification	Not provided	
Image detector	GATAN K3 (6k x 4k)	Depositor
Maximum map value	0.072	Depositor
Minimum map value	-0.031	Depositor
Average map value	0.000	Depositor
Map value standard deviation	0.001	Depositor
Recommended contour level	0.008	Depositor
Map size (\AA)	396.0, 396.0, 396.0	wwPDB
Map dimensions	360, 360, 360	wwPDB
Map angles ($^\circ$)	90.0, 90.0, 90.0	wwPDB
Pixel spacing (\AA)	1.1, 1.1, 1.1	Depositor

5 Model quality [i](#)

5.1 Standard geometry [i](#)

Bond lengths and bond angles in the following residue types are not validated in this section: ZN, 23G

The Z score for a bond length (or angle) is the number of standard deviations the observed value is removed from the expected value. A bond length (or angle) with $|Z| > 5$ is considered an outlier worth inspection. RMSZ is the root-mean-square of all Z scores of the bond lengths (or angles).

Mol	Chain	Bond lengths		Bond angles	
		RMSZ	# Z >5	RMSZ	# Z >5
1	A	0.53	0/1945	0.74	0/2643
2	B	0.48	0/1754	0.71	0/2384
3	C	0.47	0/2537	0.69	0/3439
3	D	0.46	0/2552	0.68	0/3458
3	E	0.49	0/2499	0.69	0/3391
3	F	0.48	0/2499	0.70	0/3391
3	G	0.52	0/2177	0.76	0/2955
4	H	0.46	0/1835	0.69	0/2475
5	I	0.44	0/1446	1.08	0/2256
6	J	0.65	0/800	1.21	0/1231
7	K	0.73	0/850	1.03	0/1310
8	L	0.41	0/4632	0.68	0/6301
All	All	0.49	0/25526	0.77	0/35234

There are no bond length outliers.

There are no bond angle outliers.

There are no chirality outliers.

There are no planarity outliers.

5.2 Too-close contacts [i](#)

In the following table, the Non-H and H(model) columns list the number of non-hydrogen atoms and hydrogen atoms in the chain respectively. The H(added) column lists the number of hydrogen atoms added and optimized by MolProbity. The Clashes column lists the number of clashes within the asymmetric unit, whereas Symm-Clashes lists symmetry-related clashes.

Mol	Chain	Non-H	H(model)	H(added)	Clashes	Symm-Clashes
1	A	1897	0	1892	217	0

Continued on next page...

Continued from previous page...

Mol	Chain	Non-H	H(model)	H(added)	Clashes	Symm-Clashes
2	B	1709	0	1694	179	0
3	C	2488	0	2494	169	0
3	D	2503	0	2513	176	0
3	E	2450	0	2446	268	0
3	F	2450	0	2446	212	0
3	G	2131	0	2128	246	0
4	H	1800	0	1838	129	0
5	I	1317	0	659	194	0
6	J	722	0	421	39	0
7	K	759	0	418	76	0
8	L	4542	0	4629	193	0
9	A	1	0	0	0	0
All	All	24769	0	23578	1810	0

The all-atom clashscore is defined as the number of clashes found per 1000 atoms (including hydrogen atoms). The all-atom clashscore for this structure is 38.

The worst 5 of 1810 close contacts within the same asymmetric unit are listed below, sorted by their clash magnitude.

Atom-1	Atom-2	Interatomic distance (Å)	Clash overlap (Å)
3:F:180:ARG:HG2	5:I:33:U:C5'	1.21	1.62
2:B:102:LEU:CD2	2:B:104:LEU:HD23	1.29	1.62
3:G:48:VAL:HG21	3:G:62:LEU:CD1	1.19	1.61
3:D:70:MET:CA	3:D:73:LEU:HD23	1.24	1.60
3:G:82:VAL:CG2	3:G:277:LEU:HD21	1.26	1.59

There are no symmetry-related clashes.

5.3 Torsion angles [i](#)

5.3.1 Protein backbone [i](#)

In the following table, the Percentiles column shows the percent Ramachandran outliers of the chain as a percentile score with respect to all PDB entries followed by that with respect to all EM entries.

The Analysed column shows the number of residues for which the backbone conformation was analysed, and the total number of residues.

Mol	Chain	Analysed	Favoured	Allowed	Outliers	Percentiles	
1	A	239/253 (94%)	226 (95%)	13 (5%)	0	100	100
2	B	217/220 (99%)	204 (94%)	12 (6%)	1 (0%)	29	66
3	C	325/348 (93%)	310 (95%)	14 (4%)	1 (0%)	41	74
3	D	327/348 (94%)	312 (95%)	15 (5%)	0	100	100
3	E	320/348 (92%)	310 (97%)	10 (3%)	0	100	100
3	F	320/348 (92%)	306 (96%)	14 (4%)	0	100	100
3	G	276/348 (79%)	263 (95%)	13 (5%)	0	100	100
4	H	232/268 (87%)	228 (98%)	4 (2%)	0	100	100
8	L	586/626 (94%)	572 (98%)	14 (2%)	0	100	100
All	All	2842/3107 (92%)	2731 (96%)	109 (4%)	2 (0%)	54	83

All (2) Ramachandran outliers are listed below:

Mol	Chain	Res	Type
2	B	185	ASP
3	C	128	PRO

5.3.2 Protein sidechains [i](#)

In the following table, the Percentiles column shows the percent sidechain outliers of the chain as a percentile score with respect to all PDB entries followed by that with respect to all EM entries.

The Analysed column shows the number of residues for which the sidechain conformation was analysed, and the total number of residues.

Mol	Chain	Analysed	Rotameric	Outliers	Percentiles	
1	A	210/222 (95%)	200 (95%)	10 (5%)	25	56
2	B	176/177 (99%)	168 (96%)	8 (4%)	27	57
3	C	263/274 (96%)	257 (98%)	6 (2%)	50	71
3	D	264/274 (96%)	257 (97%)	7 (3%)	44	68
3	E	259/274 (94%)	253 (98%)	6 (2%)	50	71
3	F	259/274 (94%)	250 (96%)	9 (4%)	36	63
3	G	227/274 (83%)	219 (96%)	8 (4%)	36	63
4	H	191/215 (89%)	188 (98%)	3 (2%)	62	80
8	L	480/503 (95%)	472 (98%)	8 (2%)	60	79

Continued on next page...

Continued from previous page...

Mol	Chain	Analysed	Rotameric	Outliers	Percentiles
All	All	2329/2487 (94%)	2264 (97%)	65 (3%)	46 67

5 of 65 residues with a non-rotameric sidechain are listed below:

Mol	Chain	Res	Type
8	L	52	LEU
8	L	193	CYS
3	D	59	SER
3	C	336	LYS
8	L	275	ASP

Sometimes sidechains can be flipped to improve hydrogen bonding and reduce clashes. 5 of 18 such sidechains are listed below:

Mol	Chain	Res	Type
4	H	230	GLN
8	L	575	GLN
8	L	472	ASN
3	D	2	GLN
3	F	340	GLN

5.3.3 RNA [i](#)

Mol	Chain	Analysed	Backbone Outliers	Pucker Outliers
5	I	59/61 (96%)	40 (67%)	14 (23%)

5 of 40 RNA backbone outliers are listed below:

Mol	Chain	Res	Type
5	I	2	U
5	I	3	G
5	I	4	A
5	I	6	C
5	I	9	U

5 of 14 RNA pucker outliers are listed below:

Mol	Chain	Res	Type
5	I	34	G
5	I	38	A
5	I	48	C

Continued on next page...

Continued from previous page...

Mol	Chain	Res	Type
5	I	46	C
5	I	47	C

5.4 Non-standard residues in protein, DNA, RNA chains [i](#)

1 non-standard protein/DNA/RNA residue is modelled in this entry.

In the following table, the Counts columns list the number of bonds (or angles) for which Mogul statistics could be retrieved, the number of bonds (or angles) that are observed in the model and the number of bonds (or angles) that are defined in the Chemical Component Dictionary. The Link column lists molecule types, if any, to which the group is linked. The Z score for a bond length (or angle) is the number of standard deviations the observed value is removed from the expected value. A bond length (or angle) with $|Z| > 2$ is considered an outlier worth inspection. RMSZ is the root-mean-square of all Z scores of the bond lengths (or angles).

Mol	Type	Chain	Res	Link	Bond lengths			Bond angles		
					Counts	RMSZ	# $ Z > 2$	Counts	RMSZ	# $ Z > 2$
5	23G	I	61	5	19,29,30	1.07	1 (5%)	20,45,48	1.46	4 (20%)

In the following table, the Chirals column lists the number of chiral outliers, the number of chiral centers analysed, the number of these observed in the model and the number defined in the Chemical Component Dictionary. Similar counts are reported in the Torsion and Rings columns. '-' means no outliers of that kind were identified.

Mol	Type	Chain	Res	Link	Chirals	Torsions	Rings
5	23G	I	61	5	-	0/3/35/36	0/4/4/4

All (1) bond length outliers are listed below:

Mol	Chain	Res	Type	Atoms	Z	Observed(Å)	Ideal(Å)
5	I	61	23G	C6-N1	-2.44	1.34	1.37

All (4) bond angle outliers are listed below:

Mol	Chain	Res	Type	Atoms	Z	Observed(°)	Ideal(°)
5	I	61	23G	OC1-PC-OC2	3.32	120.62	109.89
5	I	61	23G	O3'-PC-OC2	-2.43	109.35	115.76
5	I	61	23G	C8-N7-C5	2.32	107.41	102.99
5	I	61	23G	C5-C6-N1	2.29	117.99	113.95

There are no chirality outliers.

There are no torsion outliers.

There are no ring outliers.

1 monomer is involved in 9 short contacts:

Mol	Chain	Res	Type	Clashes	Symm-Clashes
5	I	61	23G	9	0

5.5 Carbohydrates [i](#)

There are no monosaccharides in this entry.

5.6 Ligand geometry [i](#)

Of 1 ligands modelled in this entry, 1 is monoatomic - leaving 0 for Mogul analysis.

There are no bond length outliers.

There are no bond angle outliers.

There are no chirality outliers.

There are no torsion outliers.

There are no ring outliers.

No monomer is involved in short contacts.

5.7 Other polymers [i](#)

There are no such residues in this entry.

5.8 Polymer linkage issues [i](#)

There are no chain breaks in this entry.

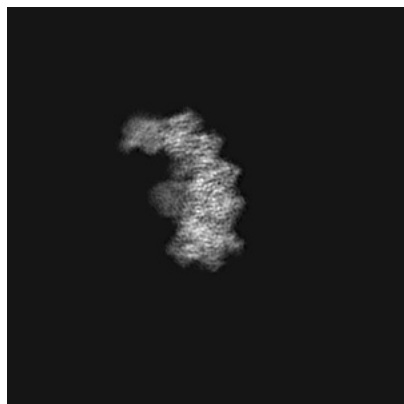
6 Map visualisation [i](#)

This section contains visualisations of the EMDB entry EMD-33185. These allow visual inspection of the internal detail of the map and identification of artifacts.

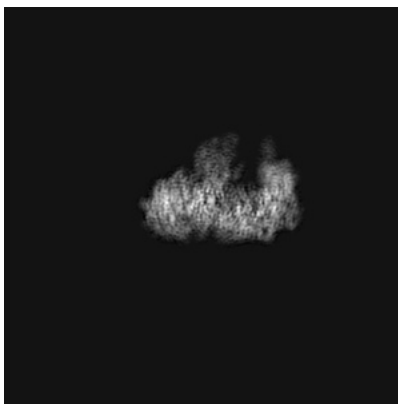
Images derived from a raw map, generated by summing the deposited half-maps, are presented below the corresponding image components of the primary map to allow further visual inspection and comparison with those of the primary map.

6.1 Orthogonal projections [i](#)

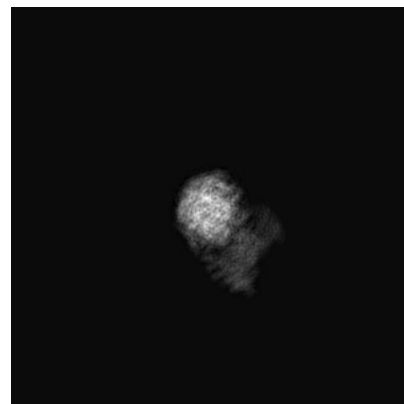
6.1.1 Primary map



X

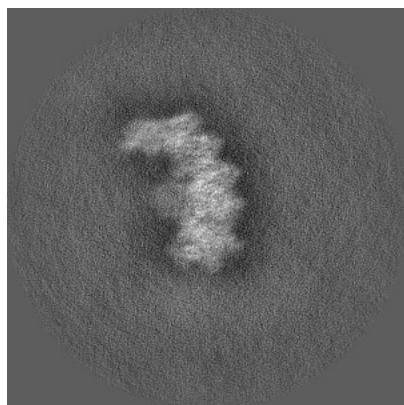


Y

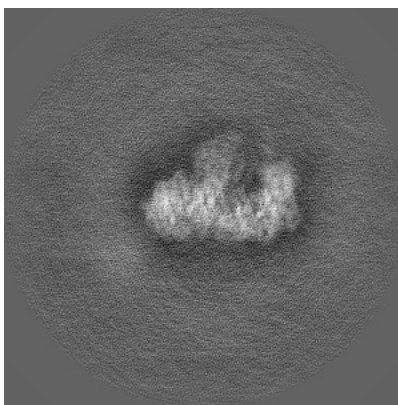


Z

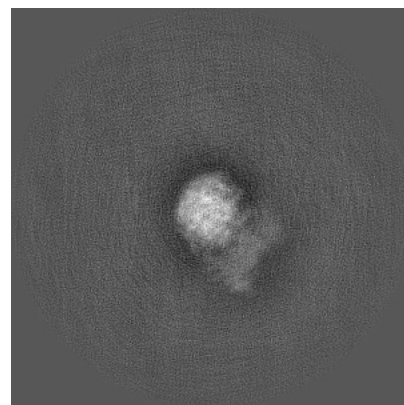
6.1.2 Raw map



X



Y

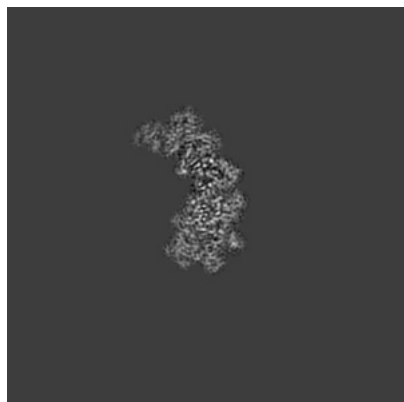


Z

The images above show the map projected in three orthogonal directions.

6.2 Central slices [i](#)

6.2.1 Primary map



X Index: 180

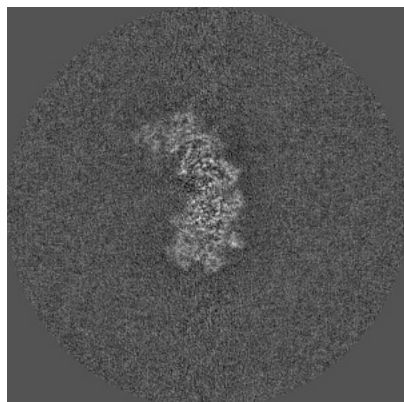


Y Index: 180

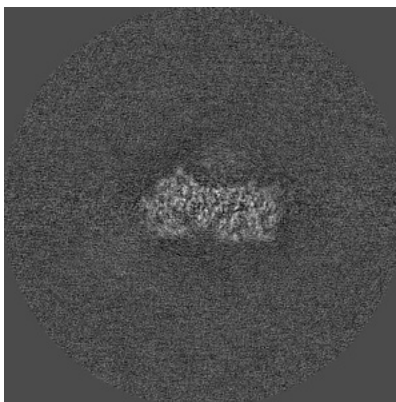


Z Index: 180

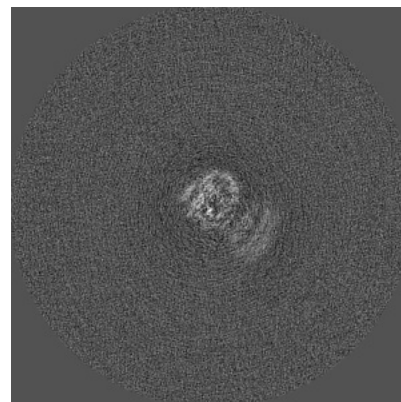
6.2.2 Raw map



X Index: 180



Y Index: 180

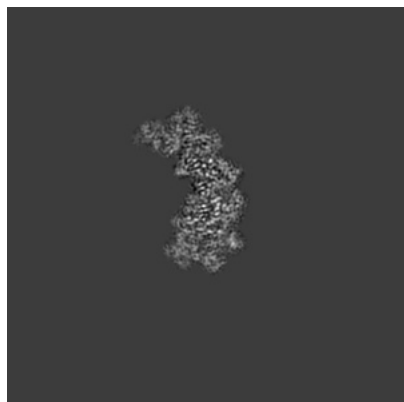


Z Index: 180

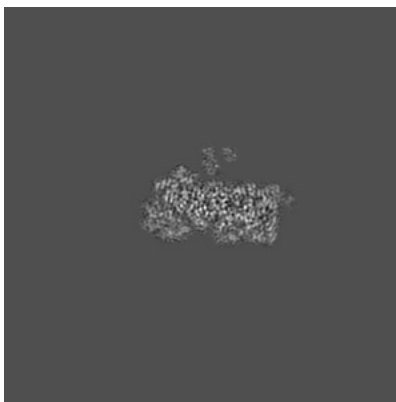
The images above show central slices of the map in three orthogonal directions.

6.3 Largest variance slices [i](#)

6.3.1 Primary map



X Index: 179

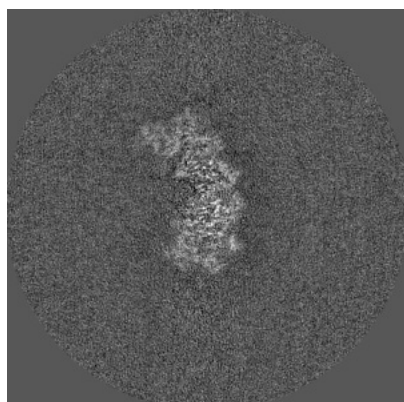


Y Index: 177

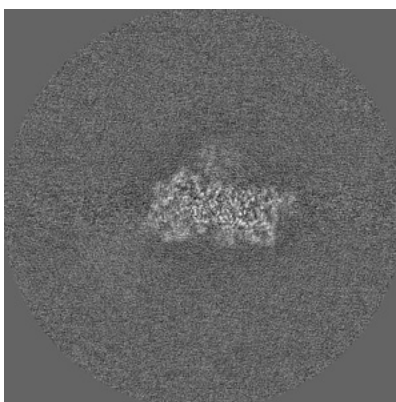


Z Index: 183

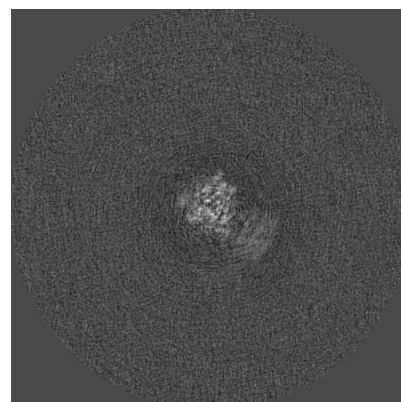
6.3.2 Raw map



X Index: 179



Y Index: 174

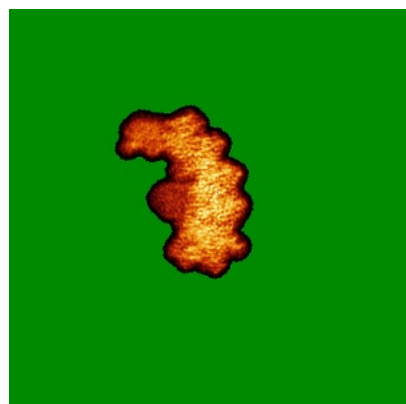


Z Index: 176

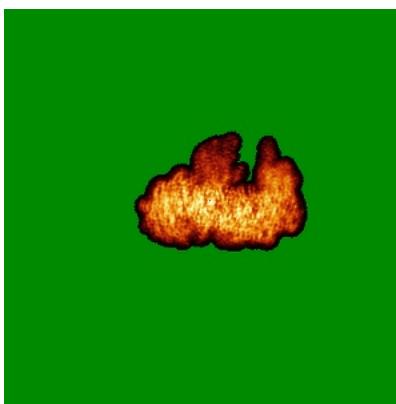
The images above show the largest variance slices of the map in three orthogonal directions.

6.4 Orthogonal standard-deviation projections (False-color) [i](#)

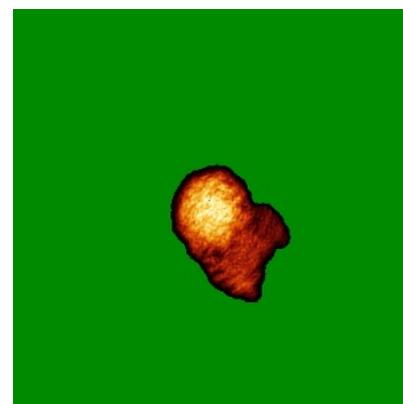
6.4.1 Primary map



X

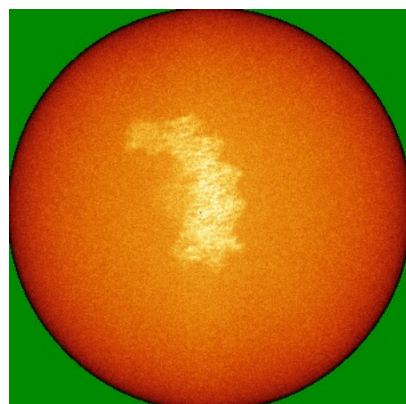


Y

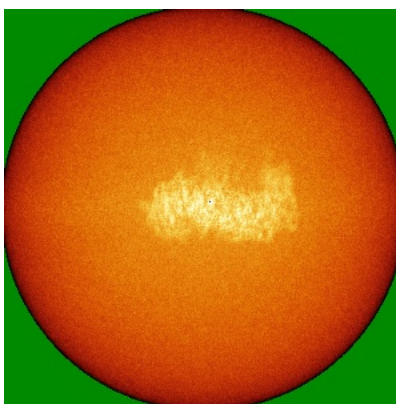


Z

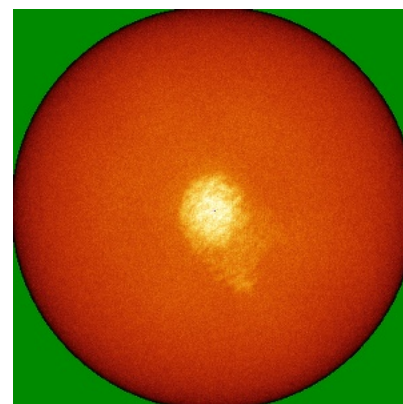
6.4.2 Raw map



X



Y



Z

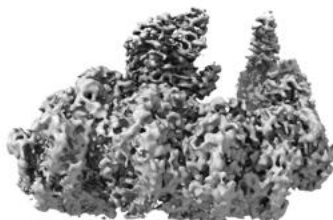
The images above show the map standard deviation projections with false color in three orthogonal directions. Minimum values are shown in green, max in blue, and dark to light orange shades represent small to large values respectively.

6.5 Orthogonal surface views [i](#)

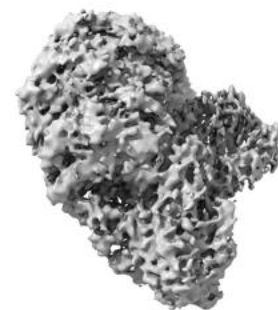
6.5.1 Primary map



X



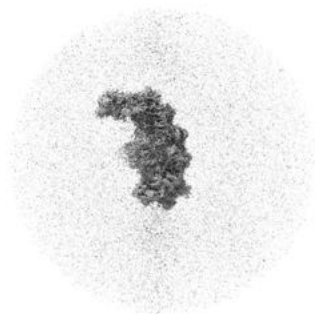
Y



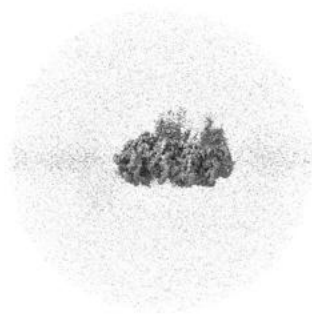
Z

The images above show the 3D surface view of the map at the recommended contour level 0.008. These images, in conjunction with the slice images, may facilitate assessment of whether an appropriate contour level has been provided.

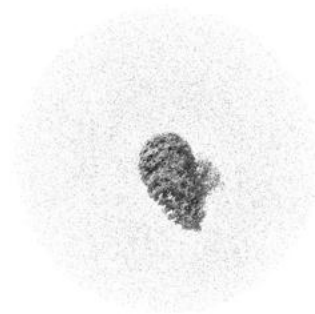
6.5.2 Raw map



X



Y



Z

These images show the 3D surface of the raw map. The raw map's contour level was selected so that its surface encloses the same volume as the primary map does at its recommended contour level.

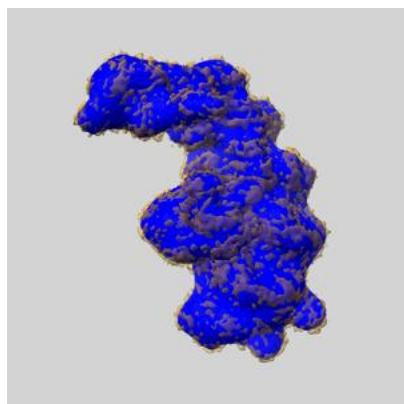
6.6 Mask visualisation [i](#)

This section shows the 3D surface view of the primary map at 50% transparency overlaid with the specified mask at 0% transparency

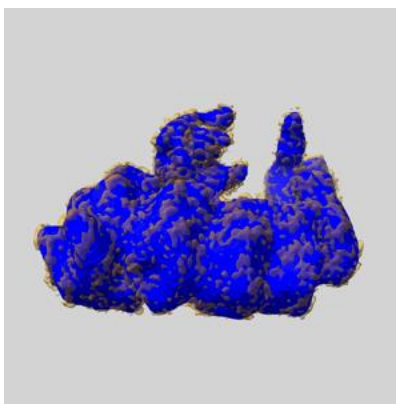
A mask typically either:

- Encompasses the whole structure
- Separates out a domain, a functional unit, a monomer or an area of interest from a larger structure

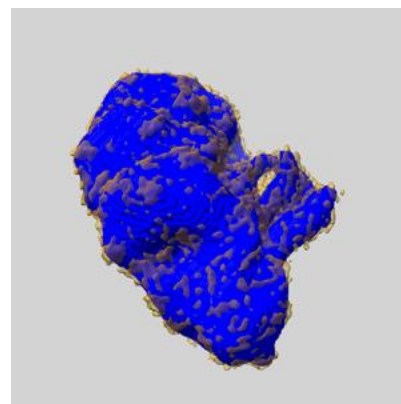
6.6.1 emd_33185_msk_1.map [i](#)



X



Y

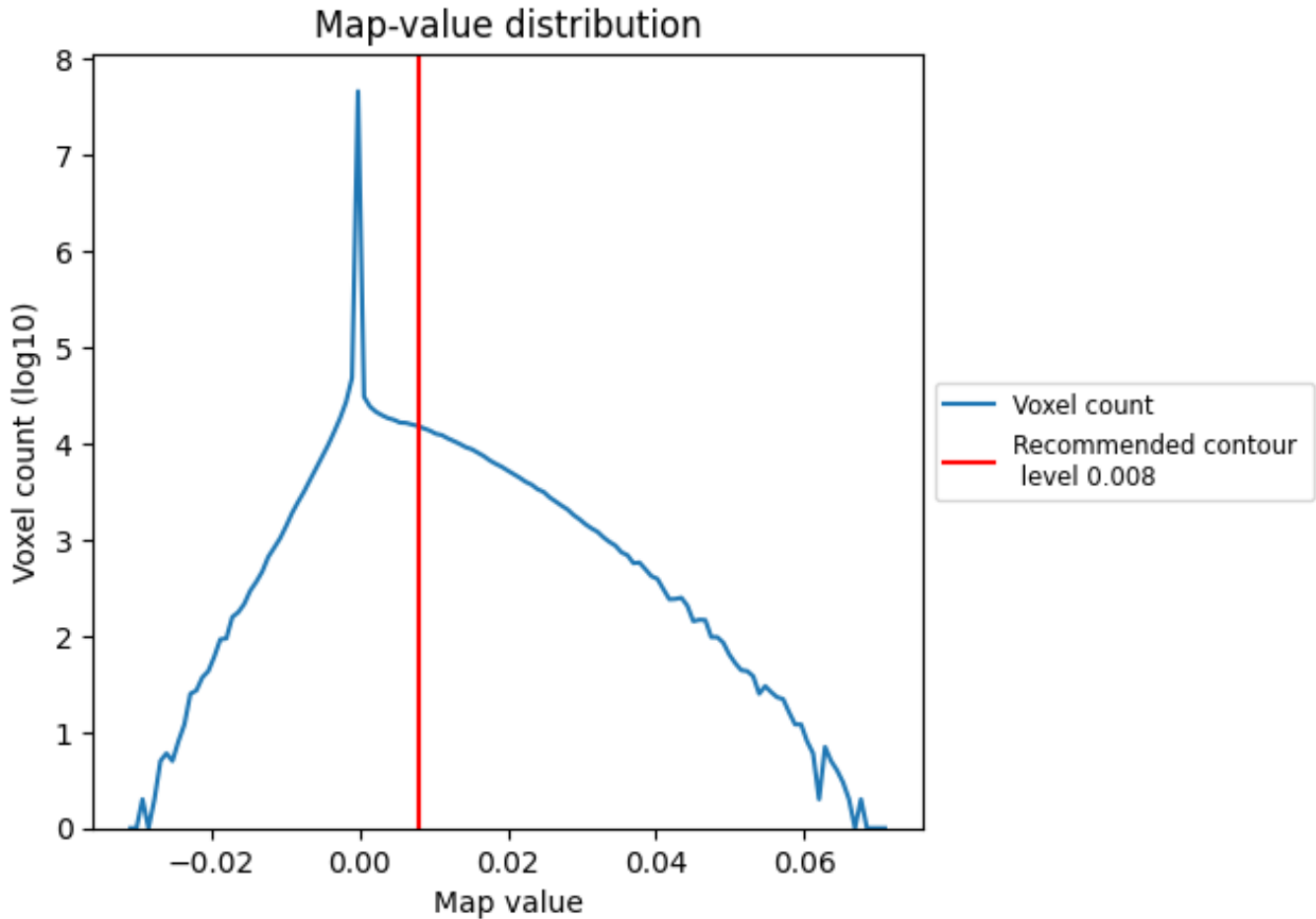


Z

7 Map analysis [i](#)

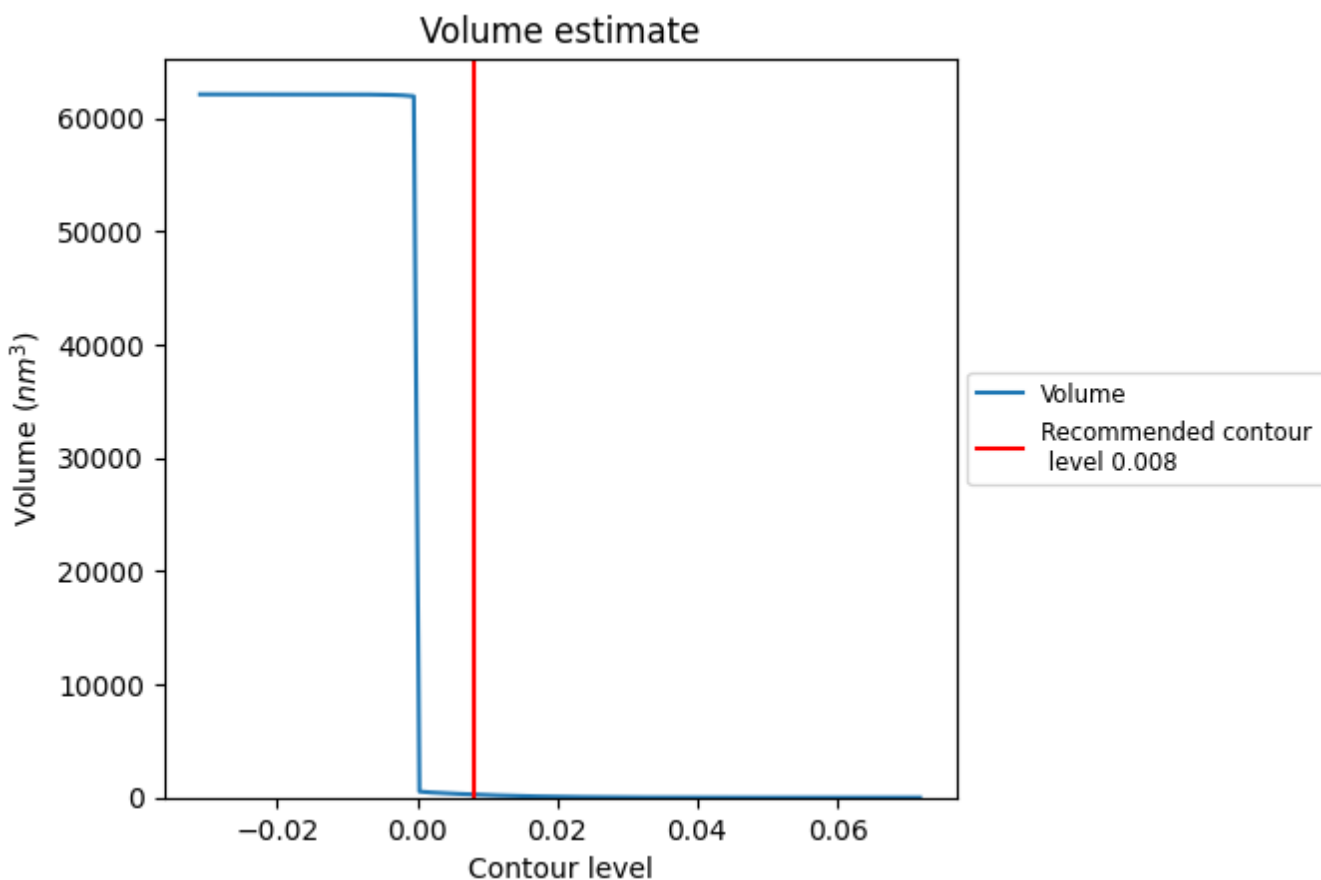
This section contains the results of statistical analysis of the map.

7.1 Map-value distribution [i](#)



The map-value distribution is plotted in 128 intervals along the x-axis. The y-axis is logarithmic. A spike in this graph at zero usually indicates that the volume has been masked.

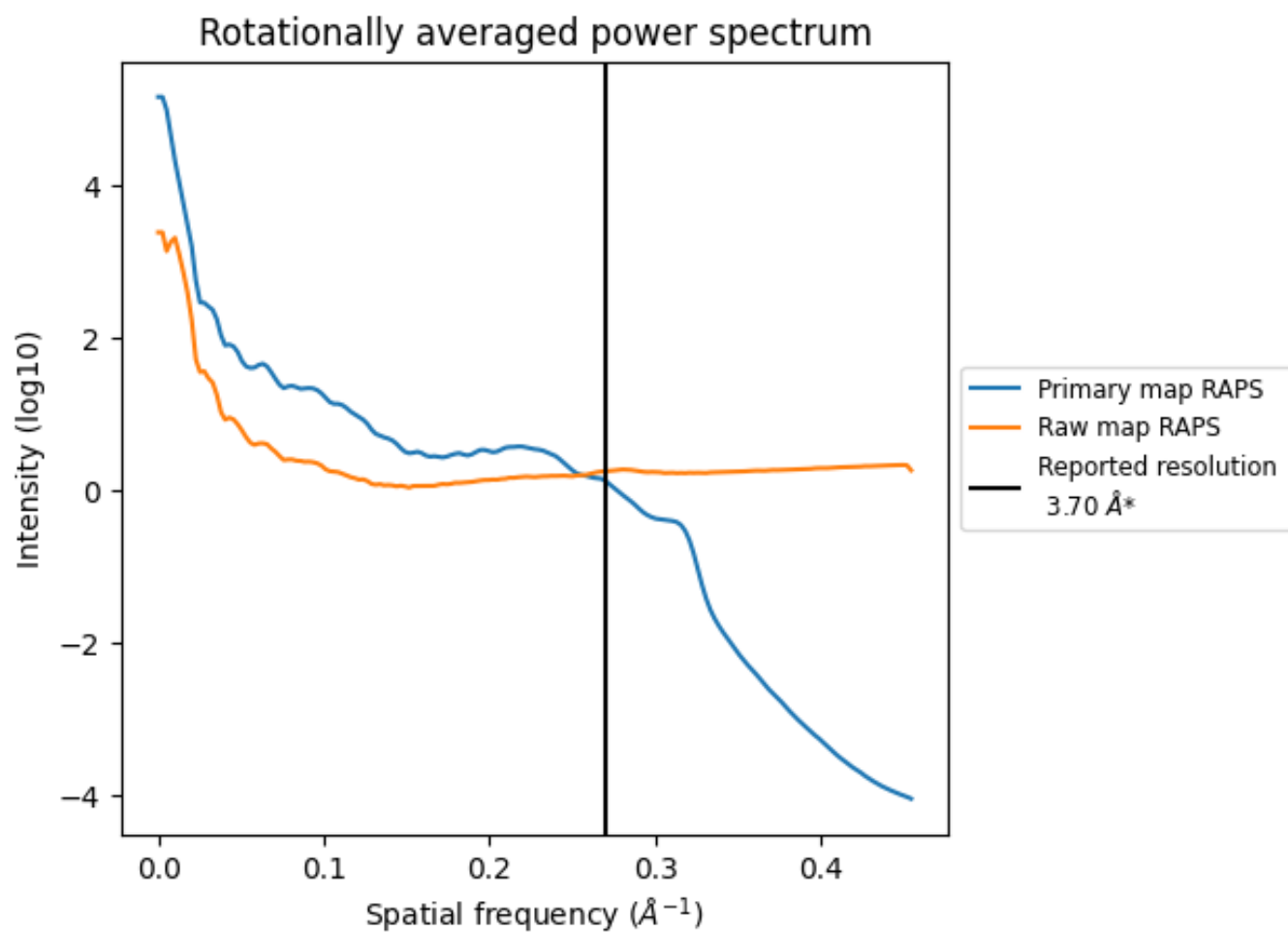
7.2 Volume estimate [i](#)



The volume at the recommended contour level is 272 nm³; this corresponds to an approximate mass of 245 kDa.

The volume estimate graph shows how the enclosed volume varies with the contour level. The recommended contour level is shown as a vertical line and the intersection between the line and the curve gives the volume of the enclosed surface at the given level.

7.3 Rotationally averaged power spectrum i

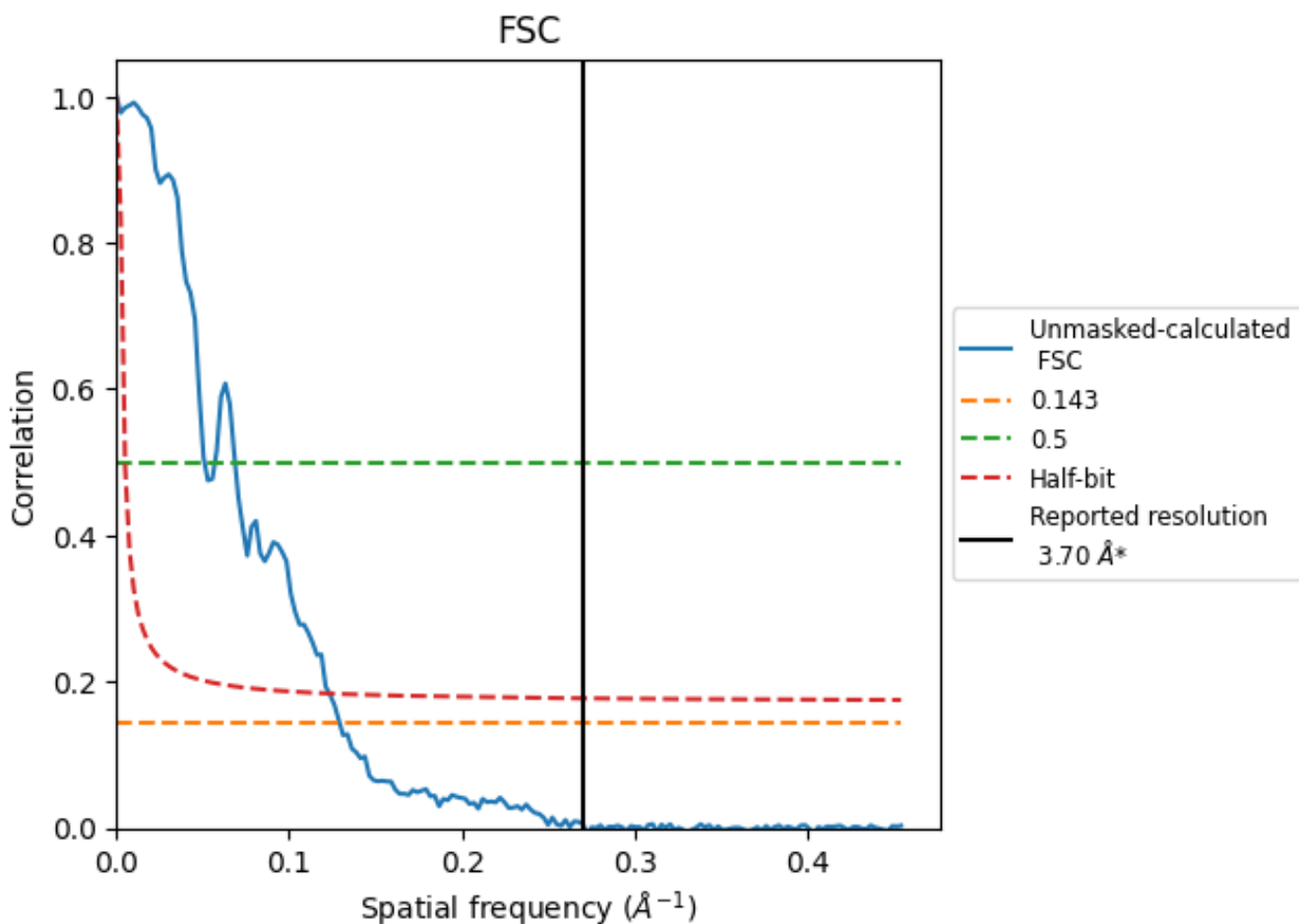


*Reported resolution corresponds to spatial frequency of 0.270 Å⁻¹

8 Fourier-Shell correlation [i](#)

Fourier-Shell Correlation (FSC) is the most commonly used method to estimate the resolution of single-particle and subtomogram-averaged maps. The shape of the curve depends on the imposed symmetry, mask and whether or not the two 3D reconstructions used were processed from a common reference. The reported resolution is shown as a black line. A curve is displayed for the half-bit criterion in addition to lines showing the 0.143 gold standard cut-off and 0.5 cut-off.

8.1 FSC [i](#)



*Reported resolution corresponds to spatial frequency of 0.270 \AA^{-1}

8.2 Resolution estimates [i](#)

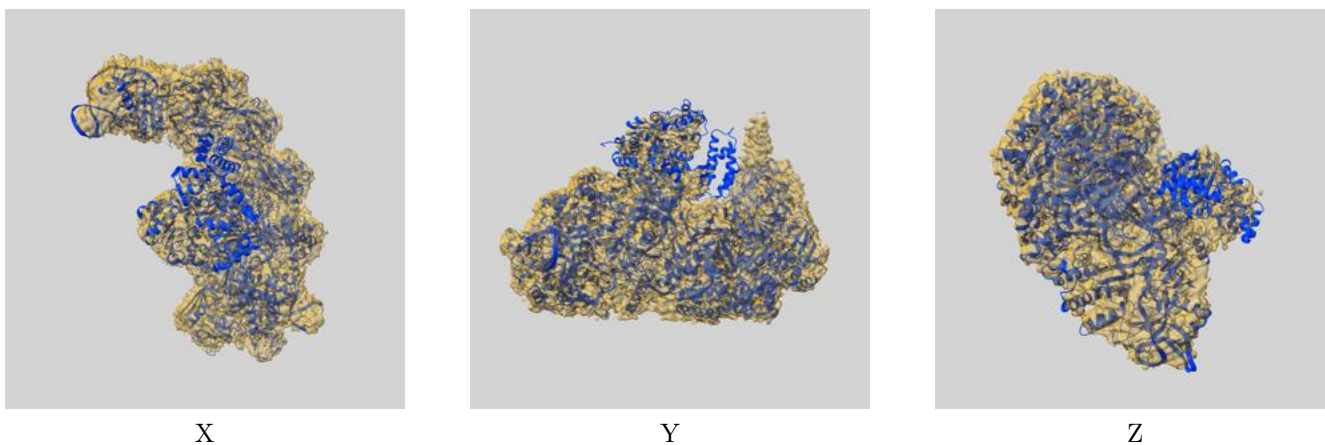
Resolution estimate (Å)	Estimation criterion (FSC cut-off)		
	0.143	0.5	Half-bit
Reported by author	3.70	-	-
Author-provided FSC curve	-	-	-
Unmasked-calculated*	7.73	19.61	8.10

*Resolution estimate based on FSC curve calculated by comparison of deposited half-maps. The value from deposited half-maps intersecting FSC 0.143 CUT-OFF 7.73 differs from the reported value 3.7 by more than 10 %

9 Map-model fit [i](#)

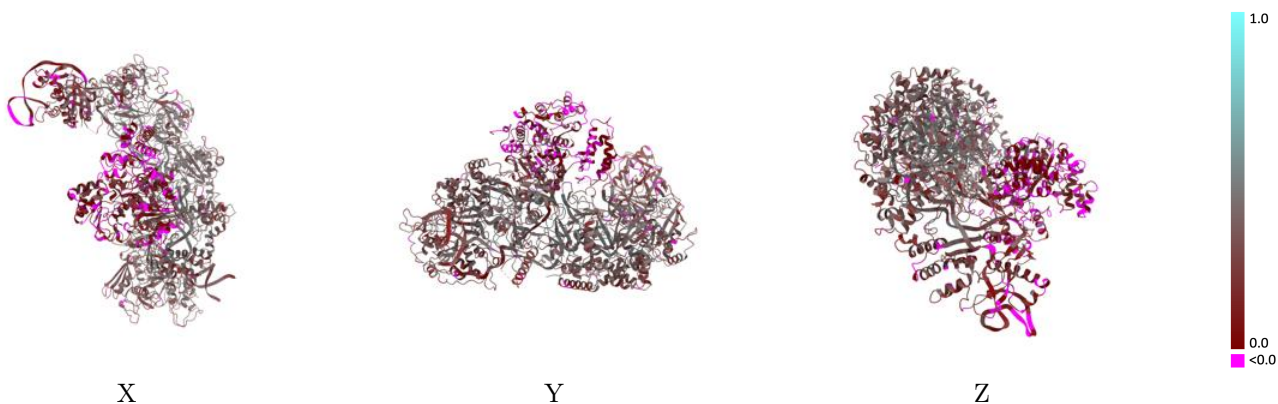
This section contains information regarding the fit between EMDB map EMD-33185 and PDB model 7XG4. Per-residue inclusion information can be found in section 3 on page 6.

9.1 Map-model overlay [i](#)



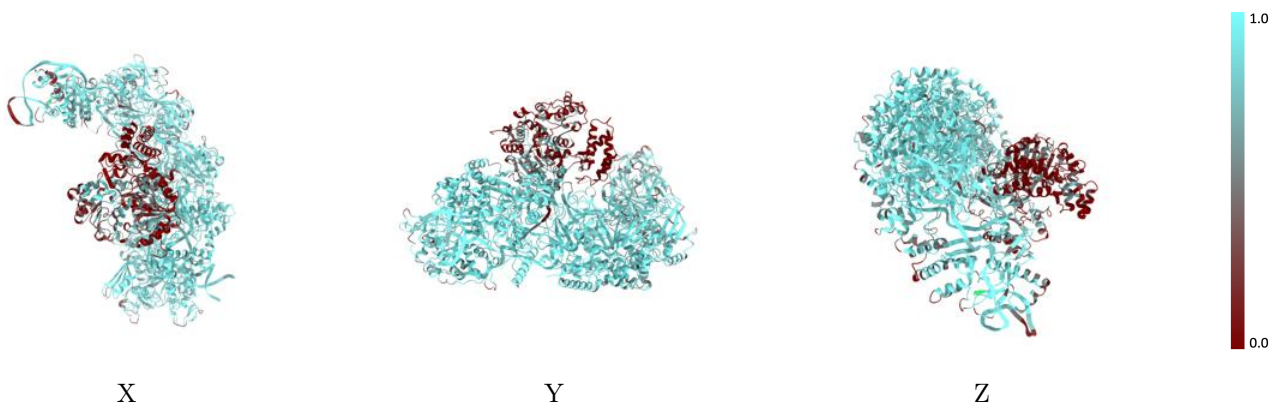
The images above show the 3D surface view of the map at the recommended contour level 0.008 at 50% transparency in yellow overlaid with a ribbon representation of the model coloured in blue. These images allow for the visual assessment of the quality of fit between the atomic model and the map.

9.2 Q-score mapped to coordinate model [i](#)



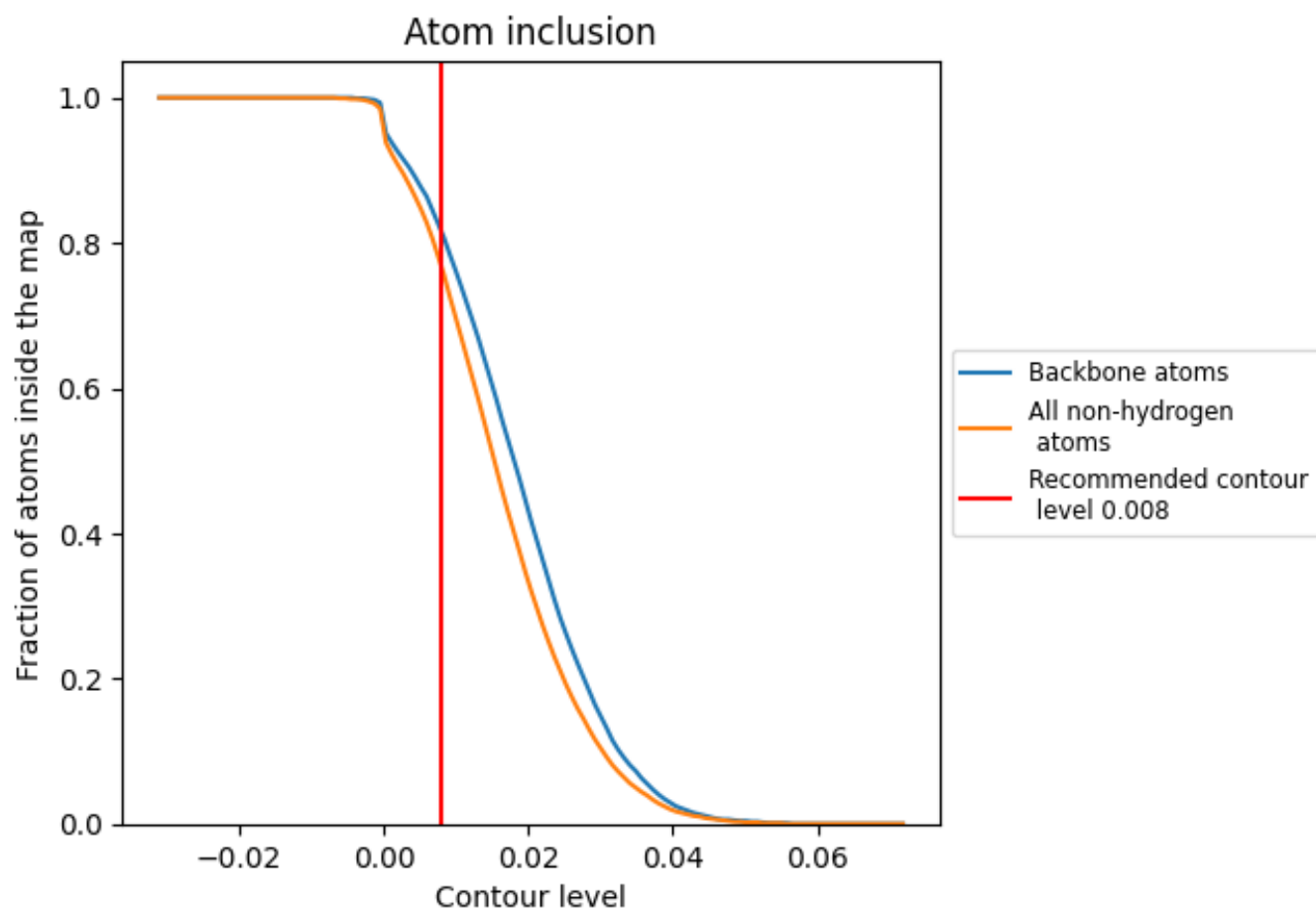
The images above show the model with each residue coloured according to its Q-score. This shows their resolvability in the map with higher Q-score values reflecting better resolvability. Please note: Q-score is calculating the resolvability of atoms, and thus high values are only expected at resolutions at which atoms can be resolved. Low Q-score values may therefore be expected for many entries.

9.3 Atom inclusion mapped to coordinate model [i](#)



The images above show the model with each residue coloured according to its atom inclusion. This shows to what extent they are inside the map at the recommended contour level (0.008).

























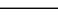
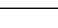
9.4 Atom inclusion [i](#)



At the recommended contour level, 82% of all backbone atoms, 77% of all non-hydrogen atoms, are inside the map.

9.5 Map-model fit summary

The table lists the average atom inclusion at the recommended contour level (0.008) and Q-score for the entire model and for each chain.

Chain	Atom inclusion	Q-score
All	 0.7680	 0.2850
A	 0.8600	 0.3050
B	 0.8950	 0.3170
C	 0.9150	 0.3600
D	 0.9330	 0.3880
E	 0.9090	 0.3880
F	 0.8560	 0.3510
G	 0.8120	 0.3110
H	 0.7820	 0.2140
I	 0.8970	 0.3030
J	 0.6790	 0.1980
K	 0.9310	 0.3700
L	 0.3100	 0.0860

