



Full wwPDB X-ray Structure Validation Report ⓘ

Nov 13, 2023 – 03:15 PM JST

PDB ID : 5XJB
Title : The Crystal Structure of the Minimal Core Domain of the Microtubule Depolymerizer KIF2C Complexed with ADP-Mg-BeFx
Authors : Ogawa, T.; Jiang, X.; Hirokawa, N.
Deposited on : 2017-04-30
Resolution : 3.10 Å(reported)

This is a Full wwPDB X-ray Structure Validation Report for a publicly released PDB entry.

We welcome your comments at validation@mail.wwpdb.org

A user guide is available at

<https://www.wwpdb.org/validation/2017/XrayValidationReportHelp>

with specific help available everywhere you see the ⓘ symbol.

The types of validation reports are described at

<http://www.wwpdb.org/validation/2017/FAQs#types>.

The following versions of software and data (see [references ⓘ](#)) were used in the production of this report:

MolProbity : 4.02b-467
Mogul : 1.8.5 (274361), CSD as541be (2020)
Xtriage (Phenix) : 1.13
EDS : 2.36
buster-report : 1.1.7 (2018)
Percentile statistics : 20191225.v01 (using entries in the PDB archive December 25th 2019)
Refmac : 5.8.0158
CCP4 : 7.0.044 (Gargrove)
Ideal geometry (proteins) : Engh & Huber (2001)
Ideal geometry (DNA, RNA) : Parkinson et al. (1996)
Validation Pipeline (wwPDB-VP) : 2.36

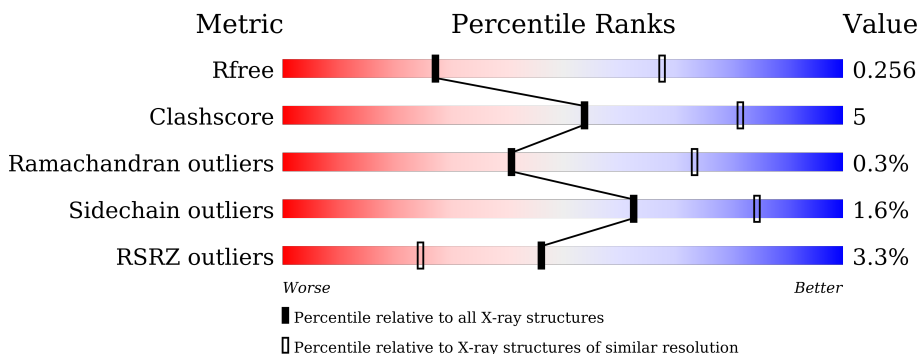
1 Overall quality at a glance

The following experimental techniques were used to determine the structure:

X-RAY DIFFRACTION

The reported resolution of this entry is 3.10 Å.

Percentile scores (ranging between 0-100) for global validation metrics of the entry are shown in the following graphic. The table shows the number of entries on which the scores are based.



Metric	Whole archive (#Entries)	Similar resolution (#Entries, resolution range(Å))
R_{free}	130704	1094 (3.10-3.10)
Clashscore	141614	1184 (3.10-3.10)
Ramachandran outliers	138981	1141 (3.10-3.10)
Sidechain outliers	138945	1141 (3.10-3.10)
RSRZ outliers	127900	1067 (3.10-3.10)

The table below summarises the geometric issues observed across the polymeric chains and their fit to the electron density. The red, orange, yellow and green segments of the lower bar indicate the fraction of residues that contain outliers for ≥ 3 , 2, 1 and 0 types of geometric quality criteria respectively. A grey segment represents the fraction of residues that are not modelled. The numeric value for each fraction is indicated below the corresponding segment, with a dot representing fractions $\leq 5\%$. The upper red bar (where present) indicates the fraction of residues that have poor fit to the electron density. The numeric value is given above the bar.

Mol	Chain	Length	Quality of chain
1	A	426	
1	B	426	

The following table lists non-polymeric compounds, carbohydrate monomers and non-standard residues in protein, DNA, RNA chains that are outliers for geometric or electron-density-fit criteria:

Mol	Type	Chain	Res	Chirality	Geometry	Clashes	Electron density
3	BEF	A	602	-	-	X	-
3	BEF	B	602	-	-	X	X

2 Entry composition [i](#)

There are 5 unique types of molecules in this entry. The entry contains 5344 atoms, of which 0 are hydrogens and 0 are deuteriums.

In the tables below, the ZeroOcc column contains the number of atoms modelled with zero occupancy, the AltConf column contains the number of residues with at least one atom in alternate conformation and the Trace column contains the number of residues modelled with at most 2 atoms.

- Molecule 1 is a protein called Kinesin-like protein KIF2C.

Mol	Chain	Residues	Atoms					ZeroOcc	AltConf	Trace
			Total	C	N	O	S			
1	A	341	2663	1678	472	492	21	0	0	0
1	B	333	2612	1650	460	481	21	0	0	0

There are 48 discrepancies between the modelled and reference sequences:

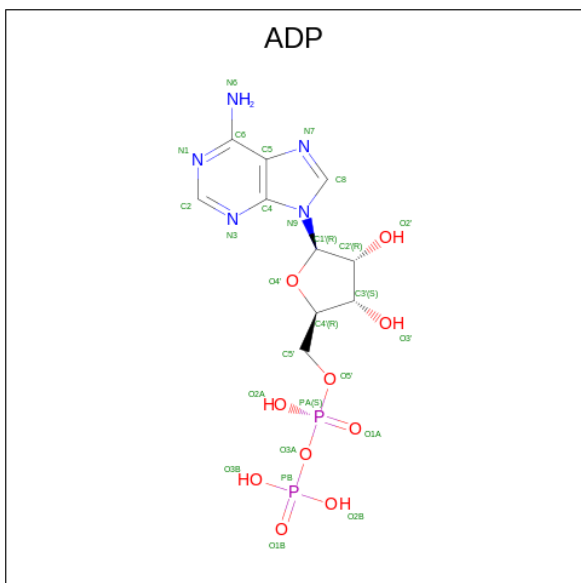
Chain	Residue	Modelled	Actual	Comment	Reference
A	167	MET	-	initiating methionine	UNP Q922S8
A	168	ALA	-	expression tag	UNP Q922S8
A	169	SER	-	expression tag	UNP Q922S8
A	170	MET	-	expression tag	UNP Q922S8
A	171	THR	-	expression tag	UNP Q922S8
A	172	GLY	-	expression tag	UNP Q922S8
A	173	GLY	-	expression tag	UNP Q922S8
A	174	GLN	-	expression tag	UNP Q922S8
A	175	GLN	-	expression tag	UNP Q922S8
A	176	MET	-	expression tag	UNP Q922S8
A	177	GLY	-	expression tag	UNP Q922S8
A	178	ARG	-	expression tag	UNP Q922S8
A	179	ASP	-	expression tag	UNP Q922S8
A	180	PRO	-	expression tag	UNP Q922S8
A	181	ASN	-	expression tag	UNP Q922S8
A	182	SER	-	expression tag	UNP Q922S8
A	183	SER	-	expression tag	UNP Q922S8
A	586	HIS	-	expression tag	UNP Q922S8
A	587	HIS	-	expression tag	UNP Q922S8
A	588	HIS	-	expression tag	UNP Q922S8
A	589	HIS	-	expression tag	UNP Q922S8
A	590	HIS	-	expression tag	UNP Q922S8
A	591	HIS	-	expression tag	UNP Q922S8
A	592	HIS	-	expression tag	UNP Q922S8
B	167	MET	-	initiating methionine	UNP Q922S8

Continued on next page...

Continued from previous page...

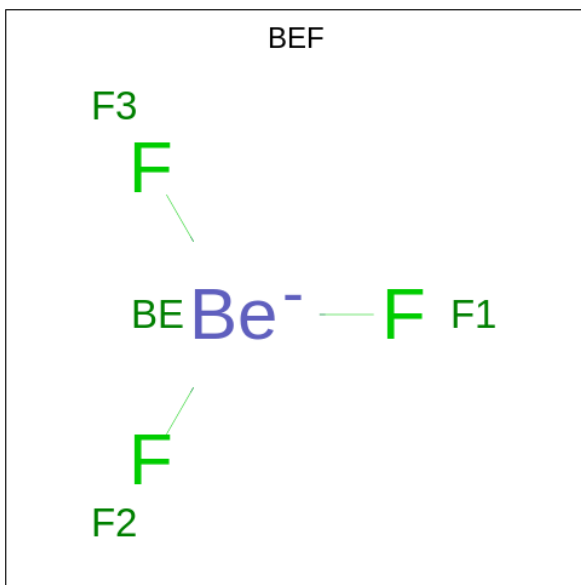
Chain	Residue	Modelled	Actual	Comment	Reference
B	168	ALA	-	expression tag	UNP Q922S8
B	169	SER	-	expression tag	UNP Q922S8
B	170	MET	-	expression tag	UNP Q922S8
B	171	THR	-	expression tag	UNP Q922S8
B	172	GLY	-	expression tag	UNP Q922S8
B	173	GLY	-	expression tag	UNP Q922S8
B	174	GLN	-	expression tag	UNP Q922S8
B	175	GLN	-	expression tag	UNP Q922S8
B	176	MET	-	expression tag	UNP Q922S8
B	177	GLY	-	expression tag	UNP Q922S8
B	178	ARG	-	expression tag	UNP Q922S8
B	179	ASP	-	expression tag	UNP Q922S8
B	180	PRO	-	expression tag	UNP Q922S8
B	181	ASN	-	expression tag	UNP Q922S8
B	182	SER	-	expression tag	UNP Q922S8
B	183	SER	-	expression tag	UNP Q922S8
B	586	HIS	-	expression tag	UNP Q922S8
B	587	HIS	-	expression tag	UNP Q922S8
B	588	HIS	-	expression tag	UNP Q922S8
B	589	HIS	-	expression tag	UNP Q922S8
B	590	HIS	-	expression tag	UNP Q922S8
B	591	HIS	-	expression tag	UNP Q922S8
B	592	HIS	-	expression tag	UNP Q922S8

- Molecule 2 is ADENOSINE-5'-DIPHOSPHATE (three-letter code: ADP) (formula: $C_{10}H_{15}N_5O_{10}P_2$).



Mol	Chain	Residues	Atoms					ZeroOcc	AltConf
			Total	C	N	O	P		
2	A	1	27	10	5	10	2	0	0
2	B	1	27	10	5	10	2	0	0

- Molecule 3 is BERYLLIUM TRIFLUORIDE ION (three-letter code: BEF) (formula: BeF₃).



Mol	Chain	Residues	Atoms			ZeroOcc	AltConf
			Total	Be	F		
3	A	1	4	1	3	0	0
3	B	1	4	1	3	0	0

- Molecule 4 is MAGNESIUM ION (three-letter code: MG) (formula: Mg).

Mol	Chain	Residues	Atoms		ZeroOcc	AltConf
			Total	Mg		
4	A	1	1	1	0	0
4	B	1	1	1	0	0

- Molecule 5 is water.

Mol	Chain	Residues	Atoms		ZeroOcc	AltConf
			Total	O		
5	A	3	3	3	0	0

Continued on next page...

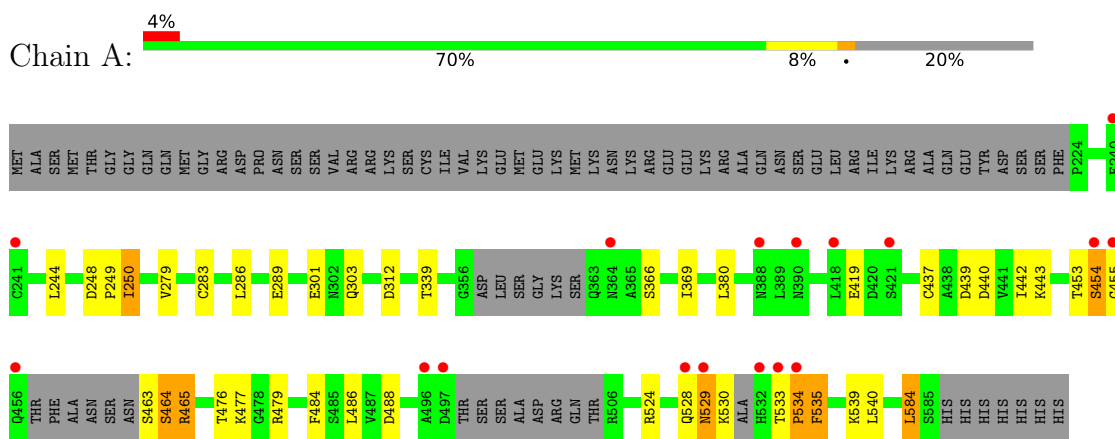
Continued from previous page...

Mol	Chain	Residues	Atoms		ZeroOcc	AltConf
5	B	2	Total	O	0	0
			2	2		

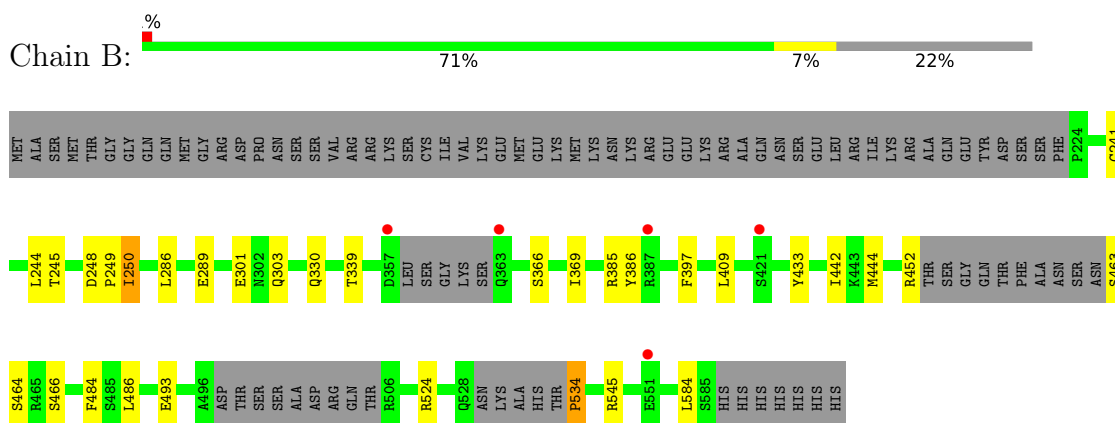
3 Residue-property plots [i](#)

These plots are drawn for all protein, RNA, DNA and oligosaccharide chains in the entry. The first graphic for a chain summarises the proportions of the various outlier classes displayed in the second graphic. The second graphic shows the sequence view annotated by issues in geometry and electron density. Residues are color-coded according to the number of geometric quality criteria for which they contain at least one outlier: green = 0, yellow = 1, orange = 2 and red = 3 or more. A red dot above a residue indicates a poor fit to the electron density ($RSRZ > 2$). Stretches of 2 or more consecutive residues without any outlier are shown as a green connector. Residues present in the sample, but not in the model, are shown in grey.

- Molecule 1: Kinesin-like protein KIF2C



- Molecule 1: Kinesin-like protein KIF2C



4 Data and refinement statistics

Property	Value	Source
Space group	P 21 21 2	Depositor
Cell constants a, b, c, α , β , γ	89.45Å 166.59Å 75.50Å 90.00° 90.00° 90.00°	Depositor
Resolution (Å)	30.00 – 3.10 29.48 – 3.10	Depositor EDS
% Data completeness (in resolution range)	99.8 (30.00-3.10) 99.9 (29.48-3.10)	Depositor EDS
R_{merge}	0.07	Depositor
R_{sym}	(Not available)	Depositor
$\langle I/\sigma(I) \rangle$ ¹	2.94 (at 3.11Å)	Xtrriage
Refinement program	REFMAC 5.8.0135	Depositor
R, R_{free}	0.201 , 0.261 0.209 , 0.256	Depositor DCC
R_{free} test set	1061 reflections (5.03%)	wwPDB-VP
Wilson B-factor (Å ²)	72.8	Xtrriage
Anisotropy	0.755	Xtrriage
Bulk solvent k_{sol} (e/Å ³), B_{sol} (Å ²)	0.33 , 56.3	EDS
L-test for twinning ²	$\langle L \rangle = 0.49$, $\langle L^2 \rangle = 0.32$	Xtrriage
Estimated twinning fraction	No twinning to report.	Xtrriage
F_o, F_c correlation	0.93	EDS
Total number of atoms	5344	wwPDB-VP
Average B, all atoms (Å ²)	79.0	wwPDB-VP

Xtrriage's analysis on translational NCS is as follows: *The largest off-origin peak in the Patterson function is 4.98% of the height of the origin peak. No significant pseudotranslation is detected.*

¹Intensities estimated from amplitudes.

²Theoretical values of $\langle |L| \rangle$, $\langle L^2 \rangle$ for acentric reflections are 0.5, 0.333 respectively for untwinned datasets, and 0.375, 0.2 for perfectly twinned datasets.

5 Model quality i

5.1 Standard geometry i

Bond lengths and bond angles in the following residue types are not validated in this section: ADP, BEF, MG

The Z score for a bond length (or angle) is the number of standard deviations the observed value is removed from the expected value. A bond length (or angle) with $|Z| > 5$ is considered an outlier worth inspection. RMSZ is the root-mean-square of all Z scores of the bond lengths (or angles).

Mol	Chain	Bond lengths		Bond angles	
		RMSZ	# Z >5	RMSZ	# Z >5
1	A	0.64	3/2700 (0.1%)	1.05	12/3627 (0.3%)
1	B	0.61	0/2649	0.88	5/3558 (0.1%)
All	All	0.63	3/5349 (0.1%)	0.97	17/7185 (0.2%)

Chiral center outliers are detected by calculating the chiral volume of a chiral center and verifying if the center is modelled as a planar moiety or with the opposite hand. A planarity outlier is detected by checking planarity of atoms in a peptide group, atoms in a mainchain group or atoms of a sidechain that are expected to be planar.

Mol	Chain	#Chirality outliers	#Planarity outliers
1	A	0	2
1	B	0	1
All	All	0	3

All (3) bond length outliers are listed below:

Mol	Chain	Res	Type	Atoms	Z	Observed(Å)	Ideal(Å)
1	A	454	SER	CA-CB	-5.82	1.44	1.52
1	A	455	GLY	CA-C	5.66	1.60	1.51
1	A	529	ASN	C-N	5.02	1.45	1.34

All (17) bond angle outliers are listed below:

Mol	Chain	Res	Type	Atoms	Z	Observed(°)	Ideal(°)
1	A	529	ASN	CB-CA-C	-19.35	71.70	110.40
1	A	529	ASN	O-C-N	13.54	144.37	122.70
1	A	529	ASN	N-CA-C	-13.42	74.76	111.00
1	A	529	ASN	CA-C-N	-11.37	92.20	117.20
1	A	535	PHE	CB-CA-C	-10.12	90.16	110.40
1	A	535	PHE	N-CA-C	9.83	137.53	111.00

Continued on next page...

Continued from previous page...

Mol	Chain	Res	Type	Atoms	Z	Observed(°)	Ideal(°)
1	A	534	PRO	N-CA-CB	7.71	112.56	103.30
1	B	466	SER	N-CA-CB	-7.60	99.10	110.50
1	A	465	ARG	N-CA-C	-7.04	91.98	111.00
1	A	529	ASN	C-N-CA	6.98	139.15	121.70
1	A	534	PRO	C-N-CA	-6.21	106.18	121.70
1	A	465	ARG	CB-CA-C	6.17	122.75	110.40
1	B	534	PRO	N-CA-CB	5.74	110.18	103.30
1	B	493	GLU	CB-CA-C	-5.32	99.76	110.40
1	A	488	ASP	CB-CG-OD1	5.16	122.94	118.30
1	B	545	ARG	CG-CD-NE	5.07	122.45	111.80
1	B	545	ARG	NE-CZ-NH2	-5.03	117.79	120.30

There are no chirality outliers.

All (3) planarity outliers are listed below:

Mol	Chain	Res	Type	Group
1	A	535	PHE	Peptide
1	A	584	LEU	Peptide
1	B	534	PRO	Peptide

5.2 Too-close contacts

In the following table, the Non-H and H(model) columns list the number of non-hydrogen atoms and hydrogen atoms in the chain respectively. The H(added) column lists the number of hydrogen atoms added and optimized by MolProbity. The Clashes column lists the number of clashes within the asymmetric unit, whereas Symm-Clashes lists symmetry-related clashes.

Mol	Chain	Non-H	H(model)	H(added)	Clashes	Symm-Clashes
1	A	2663	0	2676	36	1
1	B	2612	0	2637	23	1
2	A	27	0	12	0	0
2	B	27	0	12	0	0
3	A	4	0	0	3	0
3	B	4	0	0	3	0
4	A	1	0	0	0	0
4	B	1	0	0	0	0
5	A	3	0	0	1	0
5	B	2	0	0	0	0
All	All	5344	0	5337	57	2

The all-atom clashscore is defined as the number of clashes found per 1000 atoms (including

hydrogen atoms). The all-atom clashscore for this structure is 5.

All (57) close contacts within the same asymmetric unit are listed below, sorted by their clash magnitude.

Atom-1	Atom-2	Interatomic distance (Å)	Clash overlap (Å)
1:B:464:SER:N	3:B:602:BEF:F3	1.80	1.04
1:A:528:GLN:O	1:A:530:LYS:CB	2.13	0.97
1:A:528:GLN:O	1:A:529:ASN:C	2.03	0.96
1:A:463:SER:N	1:A:465:ARG:HG2	1.85	0.91
1:B:463:SER:OG	3:B:602:BEF:F3	1.75	0.91
1:A:528:GLN:O	1:A:530:LYS:N	2.12	0.81
1:A:464:SER:OG	3:A:602:BEF:F3	1.88	0.81
1:B:463:SER:OG	1:B:464:SER:N	2.20	0.71
1:B:463:SER:HG	1:B:464:SER:H	1.41	0.69
1:A:476:THR:HG23	1:A:477:LYS:H	1.59	0.68
1:A:463:SER:N	1:A:465:ARG:CG	2.56	0.66
1:A:283:CYS:SG	5:A:701:HOH:O	2.54	0.65
1:A:476:THR:HG23	1:A:477:LYS:N	2.12	0.65
1:A:464:SER:N	3:A:602:BEF:F1	2.24	0.60
1:B:464:SER:CA	3:B:602:BEF:F3	2.38	0.59
1:B:463:SER:O	1:B:464:SER:HB2	2.03	0.58
1:A:463:SER:OG	3:A:602:BEF:F1	2.00	0.54
1:A:477:LYS:C	1:A:479:ARG:H	2.10	0.53
1:A:476:THR:CG2	1:A:477:LYS:H	2.22	0.52
1:A:463:SER:N	1:A:465:ARG:HE	2.08	0.51
1:B:524:ARG:HG2	1:B:584:LEU:HB2	1.94	0.50
1:A:528:GLN:O	1:A:530:LYS:CA	2.60	0.50
1:B:369:ILE:HG22	1:B:486:LEU:HD23	1.94	0.49
1:A:533:THR:O	1:A:534:PRO:C	2.49	0.49
1:A:369:ILE:HG22	1:A:486:LEU:HD23	1.94	0.48
1:B:409:LEU:HD22	1:B:444:MET:HE3	1.96	0.48
1:B:385:ARG:HG3	1:B:386:TYR:CD1	2.49	0.48
1:A:366:SER:HB3	1:A:442:ILE:HD13	1.95	0.48
1:A:476:THR:CG2	1:A:477:LYS:N	2.77	0.47
1:B:433:TYR:CG	1:B:444:MET:HE2	2.50	0.47
1:A:463:SER:N	1:A:465:ARG:NE	2.63	0.47
1:A:249:PRO:O	1:A:250:ILE:HB	2.15	0.47
1:B:385:ARG:NE	1:B:386:TYR:CE1	2.82	0.47
1:B:248:ASP:OD1	1:B:249:PRO:O	2.34	0.46
1:A:539:LYS:O	1:A:540:LEU:C	2.51	0.46
1:B:463:SER:HG	1:B:464:SER:N	2.04	0.46
1:A:524:ARG:HG2	1:A:584:LEU:HB2	1.98	0.46
1:A:380:LEU:HD11	1:B:250:ILE:HA	1.98	0.46

Continued on next page...

Continued from previous page...

Atom-1	Atom-2	Interatomic distance (Å)	Clash overlap (Å)
1:B:244:LEU:O	1:B:248:ASP:HB2	2.15	0.45
1:B:241:CYS:SG	1:B:245:THR:OG1	2.51	0.45
1:A:248:ASP:OD1	1:A:249:PRO:O	2.35	0.45
1:A:249:PRO:O	1:A:250:ILE:CB	2.64	0.45
1:A:454:SER:O	1:A:454:SER:OG	2.30	0.45
1:A:439:ASP:O	1:A:443:LYS:HG2	2.17	0.44
1:A:244:LEU:O	1:A:248:ASP:HB2	2.17	0.44
1:B:452:ARG:CZ	1:B:463:SER:OG	2.65	0.44
1:B:249:PRO:O	1:B:250:ILE:HB	2.18	0.44
1:A:249:PRO:HB2	1:B:330:GLN:OE1	2.18	0.44
1:A:453:THR:HG22	1:A:454:SER:N	2.33	0.43
1:B:289:GLU:OE1	1:B:303:GLN:NE2	2.53	0.42
1:B:249:PRO:O	1:B:250:ILE:CB	2.68	0.42
1:A:289:GLU:OE1	1:A:303:GLN:NE2	2.54	0.41
1:A:437:CYS:HB3	1:A:440:ASP:CG	2.41	0.41
1:A:463:SER:N	1:A:465:ARG:CD	2.84	0.40
1:A:279:VAL:HB	1:A:312:ASP:HB3	2.02	0.40
1:A:463:SER:C	1:A:465:ARG:HG2	2.41	0.40
1:B:366:SER:HB3	1:B:442:ILE:HD12	2.02	0.40

All (2) symmetry-related close contacts are listed below. The label for Atom-2 includes the symmetry operator and encoded unit-cell translations to be applied.

Atom-1	Atom-2	Interatomic distance (Å)	Clash overlap (Å)
1:A:301:GLU:OE2	1:A:301:GLU:OE2[2_655]	1.78	0.42
1:B:301:GLU:OE2	1:B:301:GLU:OE2[2_655]	1.88	0.32

5.3 Torsion angles [i](#)

5.3.1 Protein backbone [i](#)

In the following table, the Percentiles column shows the percent Ramachandran outliers of the chain as a percentile score with respect to all X-ray entries followed by that with respect to entries of similar resolution.

The Analysed column shows the number of residues for which the backbone conformation was analysed, and the total number of residues.

Mol	Chain	Analysed	Favoured	Allowed	Outliers	Percentiles
1	A	331/426 (78%)	300 (91%)	30 (9%)	1 (0%)	41 73

Continued on next page...

Continued from previous page...

Mol	Chain	Analysed	Favoured	Allowed	Outliers	Percentiles	
1	B	323/426 (76%)	304 (94%)	18 (6%)	1 (0%)	41	73
All	All	654/852 (77%)	604 (92%)	48 (7%)	2 (0%)	41	73

All (2) Ramachandran outliers are listed below:

Mol	Chain	Res	Type
1	A	250	ILE
1	B	250	ILE

5.3.2 Protein sidechains [i](#)

In the following table, the Percentiles column shows the percent sidechain outliers of the chain as a percentile score with respect to all X-ray entries followed by that with respect to entries of similar resolution.

The Analysed column shows the number of residues for which the sidechain conformation was analysed, and the total number of residues.

Mol	Chain	Analysed	Rotameric	Outliers	Percentiles	
1	A	288/374 (77%)	283 (98%)	5 (2%)	60	83
1	B	284/374 (76%)	280 (99%)	4 (1%)	67	86
All	All	572/748 (76%)	563 (98%)	9 (2%)	62	84

All (9) residues with a non-rotameric sidechain are listed below:

Mol	Chain	Res	Type
1	A	286	LEU
1	A	339	THR
1	A	419	GLU
1	A	464	SER
1	A	484	PHE
1	B	286	LEU
1	B	339	THR
1	B	397	PHE
1	B	484	PHE

Sometimes sidechains can be flipped to improve hydrogen bonding and reduce clashes. All (6) such sidechains are listed below:

Mol	Chain	Res	Type
1	A	303	GLN
1	A	390	ASN
1	A	467	HIS
1	B	303	GLN
1	B	390	ASN
1	B	467	HIS

5.3.3 RNA [i](#)

There are no RNA molecules in this entry.

5.4 Non-standard residues in protein, DNA, RNA chains [i](#)

There are no non-standard protein/DNA/RNA residues in this entry.

5.5 Carbohydrates [i](#)

There are no monosaccharides in this entry.

5.6 Ligand geometry [i](#)

Of 6 ligands modelled in this entry, 2 are monoatomic - leaving 4 for Mogul analysis.

In the following table, the Counts columns list the number of bonds (or angles) for which Mogul statistics could be retrieved, the number of bonds (or angles) that are observed in the model and the number of bonds (or angles) that are defined in the Chemical Component Dictionary. The Link column lists molecule types, if any, to which the group is linked. The Z score for a bond length (or angle) is the number of standard deviations the observed value is removed from the expected value. A bond length (or angle) with $|Z| > 2$ is considered an outlier worth inspection. RMSZ is the root-mean-square of all Z scores of the bond lengths (or angles).

Mol	Type	Chain	Res	Link	Bond lengths			Bond angles		
					Counts	RMSZ	$\# Z > 2$	Counts	RMSZ	$\# Z > 2$
2	ADP	A	601	4	24,29,29	1.20	3 (12%)	29,45,45	1.60	6 (20%)
2	ADP	B	601	4	24,29,29	1.13	3 (12%)	29,45,45	1.72	8 (27%)
3	BEF	B	602	-	0,3,3	-	-	-	-	-
3	BEF	A	602	-	0,3,3	-	-	-	-	-

In the following table, the Chirals column lists the number of chiral outliers, the number of chiral centers analysed, the number of these observed in the model and the number defined in the Chemical Component Dictionary. Similar counts are reported in the Torsion and Rings columns.

'-' means no outliers of that kind were identified.

Mol	Type	Chain	Res	Link	Chirals	Torsions	Rings
2	ADP	A	601	4	-	5/12/32/32	0/3/3/3
2	ADP	B	601	4	-	4/12/32/32	0/3/3/3

All (6) bond length outliers are listed below:

Mol	Chain	Res	Type	Atoms	Z	Observed(Å)	Ideal(Å)
2	A	601	ADP	O4'-C1'	3.29	1.45	1.41
2	B	601	ADP	O4'-C1'	2.73	1.44	1.41
2	A	601	ADP	C5-C4	2.62	1.47	1.40
2	B	601	ADP	C5-C4	2.50	1.47	1.40
2	A	601	ADP	C2-N3	2.48	1.36	1.32
2	B	601	ADP	C2-N3	2.32	1.35	1.32

All (14) bond angle outliers are listed below:

Mol	Chain	Res	Type	Atoms	Z	Observed(°)	Ideal(°)
2	B	601	ADP	C5'-C4'-C3'	-3.61	101.64	115.18
2	B	601	ADP	N3-C2-N1	-3.32	123.49	128.68
2	B	601	ADP	PA-O3A-PB	-3.30	121.49	132.83
2	A	601	ADP	N3-C2-N1	-3.17	123.73	128.68
2	A	601	ADP	PA-O3A-PB	-2.95	122.69	132.83
2	B	601	ADP	N6-C6-N1	2.63	124.04	118.57
2	A	601	ADP	O5'-PA-O1A	-2.63	98.80	109.07
2	B	601	ADP	C3'-C2'-C1'	2.49	104.72	100.98
2	A	601	ADP	N6-C6-N1	2.44	123.64	118.57
2	A	601	ADP	O3B-PB-O2B	2.29	116.37	107.64
2	B	601	ADP	O3B-PB-O2B	2.27	116.31	107.64
2	B	601	ADP	C4-C5-N7	-2.14	107.17	109.40
2	A	601	ADP	C5'-C4'-C3'	-2.07	107.43	115.18
2	B	601	ADP	PA-O5'-C5'	-2.04	109.73	121.68

There are no chirality outliers.

All (9) torsion outliers are listed below:

Mol	Chain	Res	Type	Atoms
2	A	601	ADP	C5'-O5'-PA-O1A
2	A	601	ADP	C3'-C4'-C5'-O5'
2	A	601	ADP	O4'-C4'-C5'-O5'
2	B	601	ADP	PA-O3A-PB-O1B
2	A	601	ADP	PA-O3A-PB-O3B

Continued on next page...

Continued from previous page...

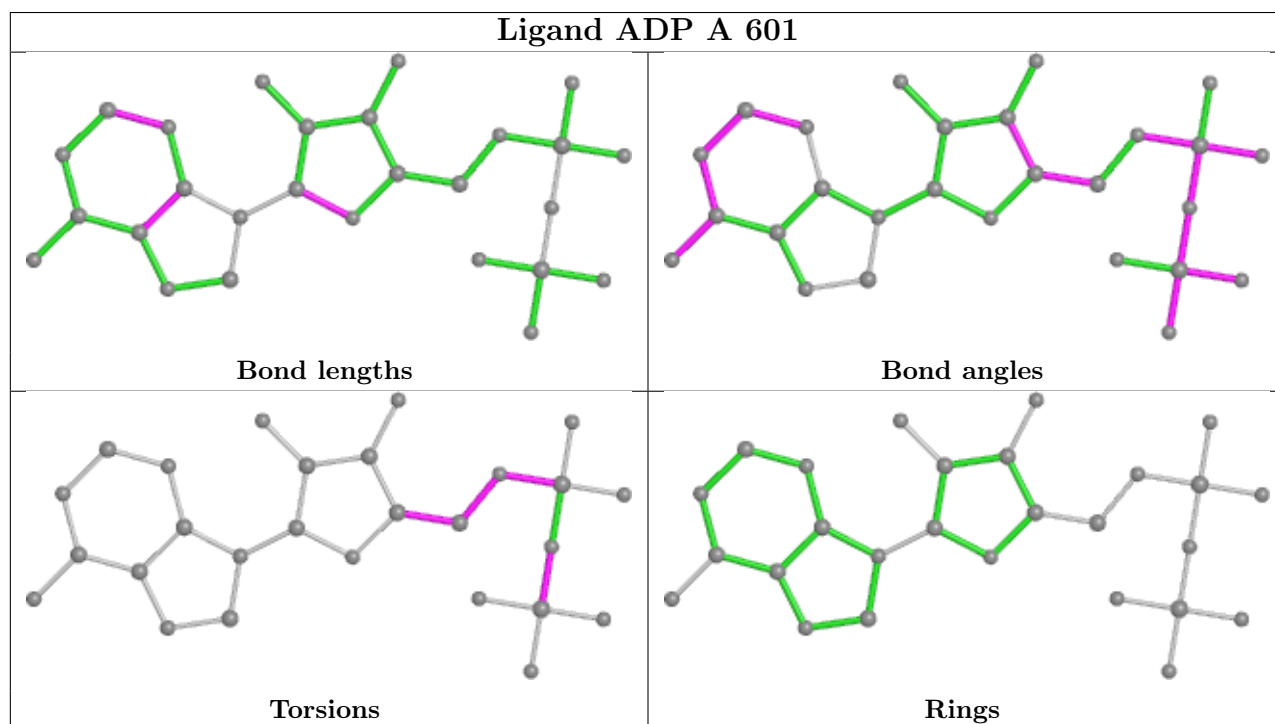
Mol	Chain	Res	Type	Atoms
2	A	601	ADP	C4'-C5'-O5'-PA
2	B	601	ADP	PA-O3A-PB-O2B
2	B	601	ADP	PA-O3A-PB-O3B
2	B	601	ADP	C5'-O5'-PA-O1A

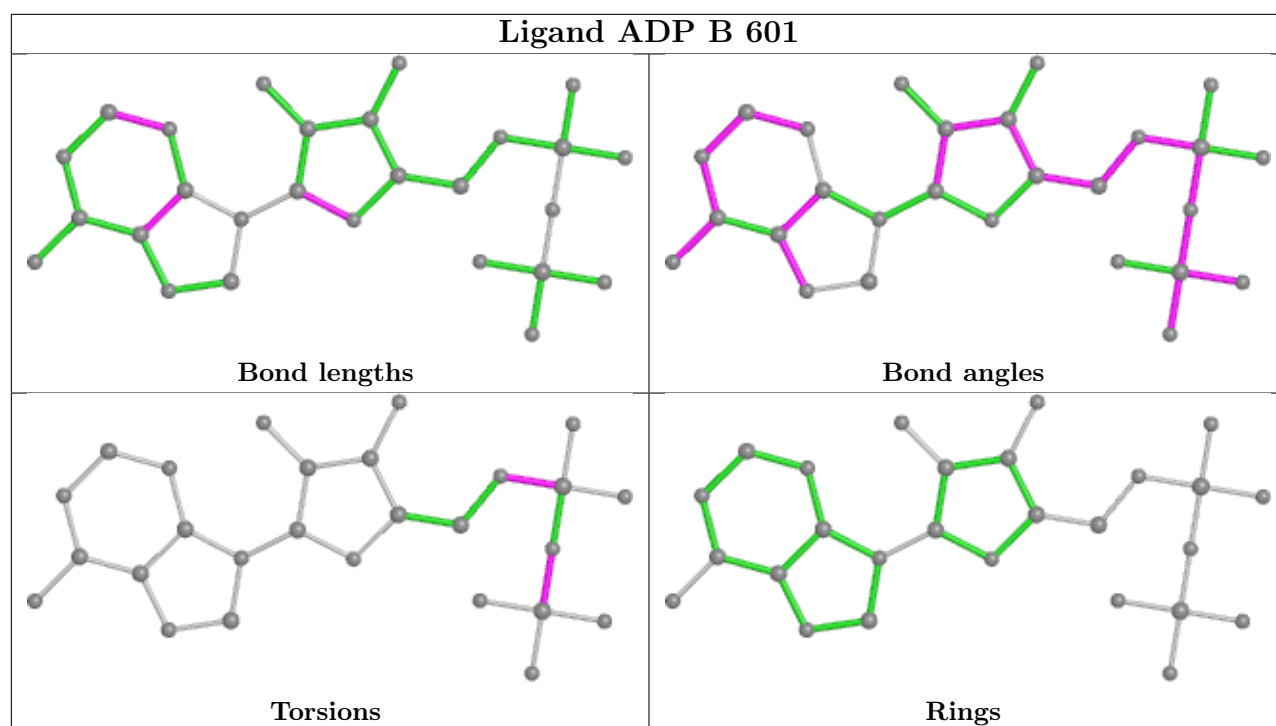
There are no ring outliers.

2 monomers are involved in 6 short contacts:

Mol	Chain	Res	Type	Clashes	Symm-Clashes
3	B	602	BEF	3	0
3	A	602	BEF	3	0

The following is a two-dimensional graphical depiction of Mogul quality analysis of bond lengths, bond angles, torsion angles, and ring geometry for all instances of the Ligand of Interest. In addition, ligands with molecular weight > 250 and outliers as shown on the validation Tables will also be included. For torsion angles, if less than 5% of the Mogul distribution of torsion angles is within 10 degrees of the torsion angle in question, then that torsion angle is considered an outlier. Any bond that is central to one or more torsion angles identified as an outlier by Mogul will be highlighted in the graph. For rings, the root-mean-square deviation (RMSD) between the ring in question and similar rings identified by Mogul is calculated over all ring torsion angles. If the average RMSD is greater than 60 degrees and the minimal RMSD between the ring in question and any Mogul-identified rings is also greater than 60 degrees, then that ring is considered an outlier. The outliers are highlighted in purple. The color gray indicates Mogul did not find sufficient equivalents in the CSD to analyse the geometry.





5.7 Other polymers [i](#)

There are no such residues in this entry.

5.8 Polymer linkage issues [i](#)

There are no chain breaks in this entry.

6 Fit of model and data

6.1 Protein, DNA and RNA chains

In the following table, the column labelled ‘#RSRZ > 2’ contains the number (and percentage) of RSRZ outliers, followed by percent RSRZ outliers for the chain as percentile scores relative to all X-ray entries and entries of similar resolution. The OWAB column contains the minimum, median, 95th percentile and maximum values of the occupancy-weighted average B-factor per residue. The column labelled ‘Q < 0.9’ lists the number of (and percentage) of residues with an average occupancy less than 0.9.

Mol	Chain	Analysed	<RSRZ>	#RSRZ>2	OWAB(Å ²)	Q<0.9
1	A	341/426 (80%)	0.02	17 (4%) 28 13	30, 73, 127, 165	0
1	B	333/426 (78%)	-0.13	5 (1%) 73 54	46, 74, 122, 144	0
All	All	674/852 (79%)	-0.05	22 (3%) 46 24	30, 74, 126, 165	0

All (22) RSRZ outliers are listed below:

Mol	Chain	Res	Type	RSRZ
1	A	421	SER	4.7
1	A	528	GLN	4.2
1	A	455	GLY	4.2
1	A	456	GLN	3.6
1	A	388	ASN	3.5
1	A	532	HIS	3.5
1	A	364	ASN	3.2
1	A	533	THR	3.2
1	A	529	ASN	3.1
1	A	454	SER	3.1
1	A	534	PRO	3.0
1	A	240	GLU	3.0
1	A	497	ASP	2.7
1	A	241	CYS	2.2
1	A	390	ASN	2.2
1	B	357	ASP	2.1
1	A	418	LEU	2.1
1	B	363	GLN	2.1
1	B	421	SER	2.1
1	B	551	GLU	2.1
1	A	496	ALA	2.0
1	B	387	ARG	2.0

6.2 Non-standard residues in protein, DNA, RNA chains [i](#)

There are no non-standard protein/DNA/RNA residues in this entry.

6.3 Carbohydrates [i](#)

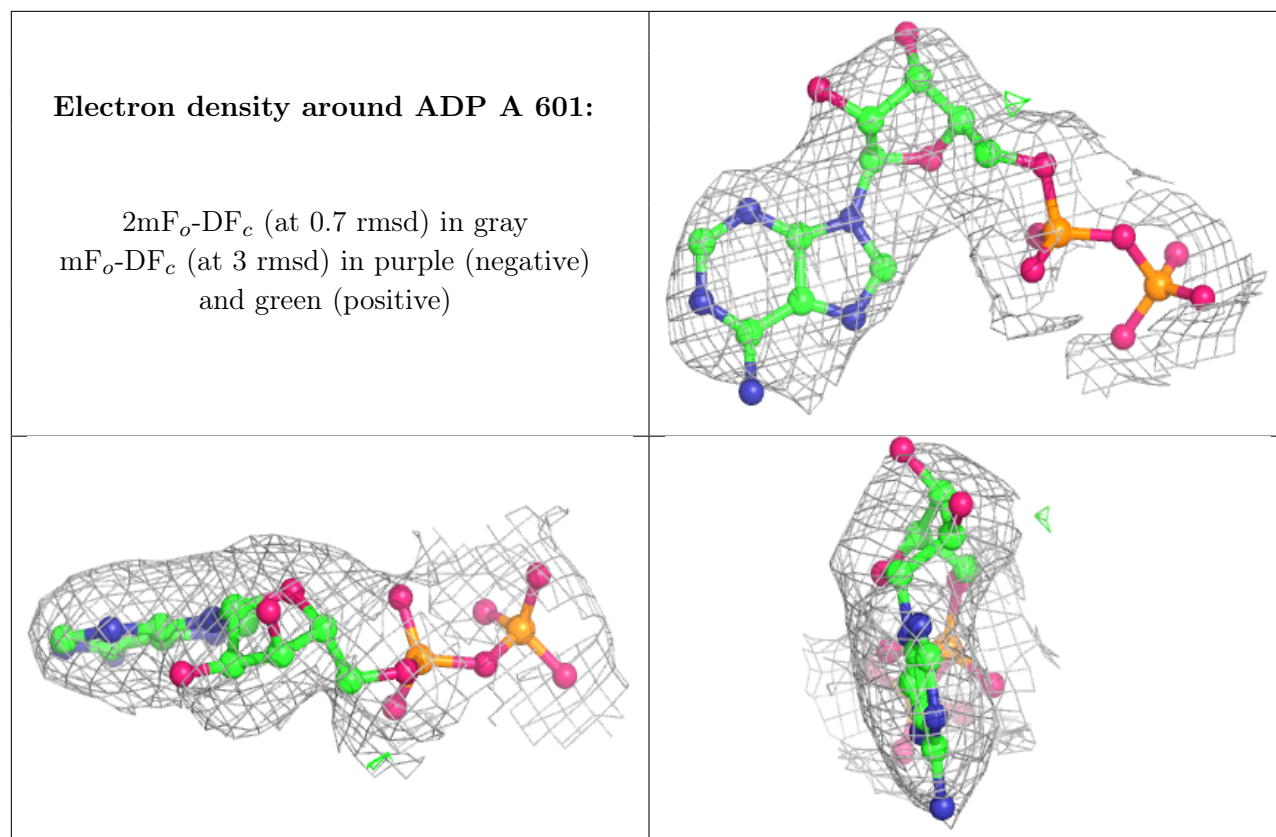
There are no monosaccharides in this entry.

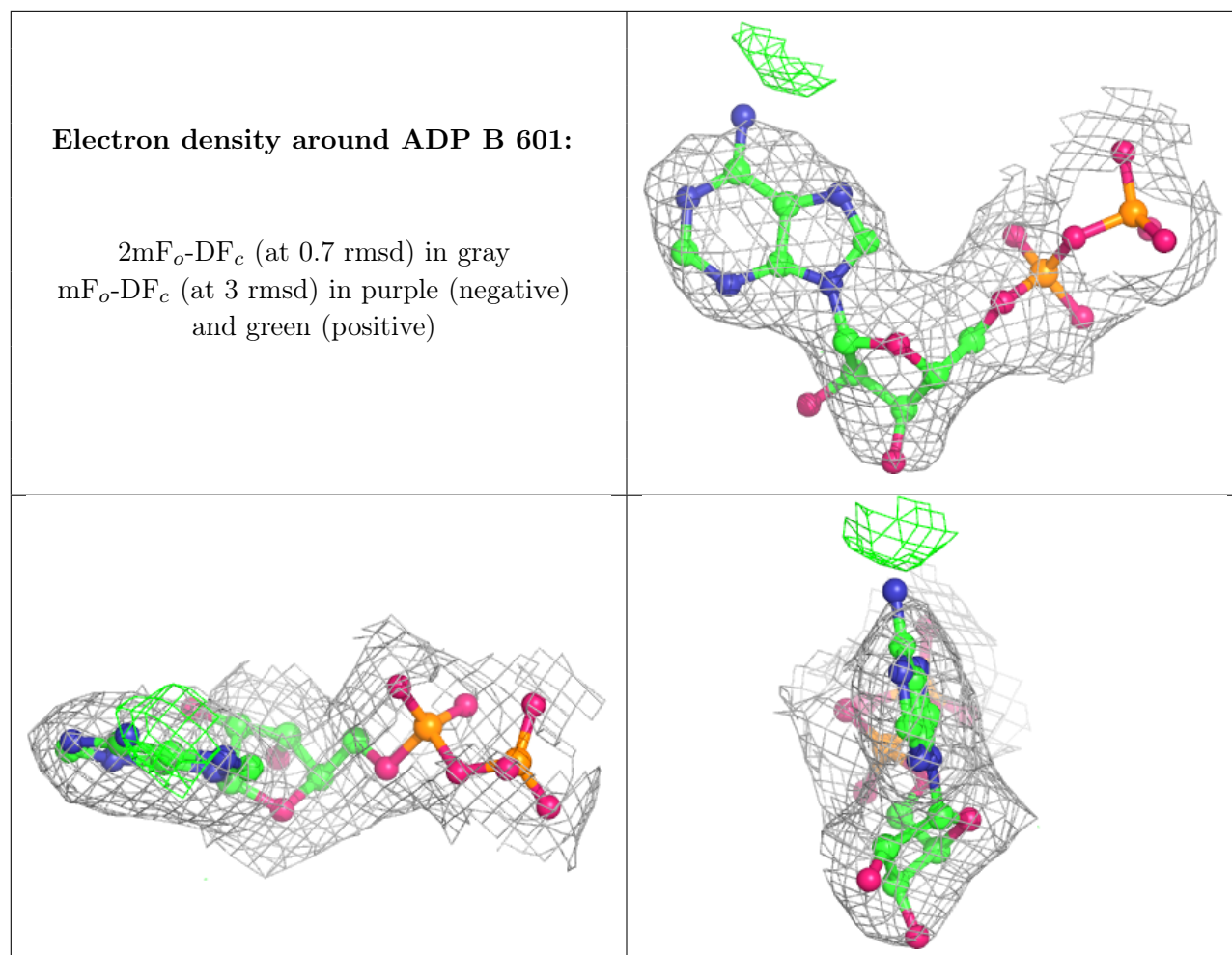
6.4 Ligands [i](#)

In the following table, the Atoms column lists the number of modelled atoms in the group and the number defined in the chemical component dictionary. The B-factors column lists the minimum, median, 95th percentile and maximum values of B factors of atoms in the group. The column labelled 'Q< 0.9' lists the number of atoms with occupancy less than 0.9.

Mol	Type	Chain	Res	Atoms	RSCC	RSR	B-factors(Å ²)	Q<0.9
3	BEF	B	602	4/4	0.53	0.53	104,122,124,127	0
3	BEF	A	602	4/4	0.57	0.38	102,110,114,115	0
4	MG	B	603	1/1	0.73	0.13	62,62,62,62	0
4	MG	A	603	1/1	0.82	0.10	66,66,66,66	0
2	ADP	A	601	27/27	0.95	0.15	67,78,99,107	0
2	ADP	B	601	27/27	0.96	0.14	67,84,99,119	0

The following is a graphical depiction of the model fit to experimental electron density of all instances of the Ligand of Interest. In addition, ligands with molecular weight > 250 and outliers as shown on the geometry validation Tables will also be included. Each fit is shown from different orientation to approximate a three-dimensional view.





6.5 Other polymers [\(i\)](#)

There are no such residues in this entry.