



Full wwPDB EM Validation Report ⓘ

Nov 30, 2022 – 12:54 AM JST

PDB ID : 7XK5
EMDB ID : EMD-33244
Title : Cryo-EM structure of Na⁺-pumping NADH-ubiquinone oxidoreductase from *Vibrio cholerae*, state 3
Authors : Kishikawa, J.; Ishikawa, M.; Masuya, T.; Murai, M.; Barquera, B.; Miyoshi, H.
Deposited on : 2022-04-19
Resolution : 3.10 Å (reported)
Based on initial model : 4P6V

This is a Full wwPDB EM Validation Report for a publicly released PDB entry.

We welcome your comments at validation@mail.wwpdb.org

A user guide is available at

<https://www.wwpdb.org/validation/2017/EMValidationReportHelp>

with specific help available everywhere you see the ⓘ symbol.

The types of validation reports are described at

<http://www.wwpdb.org/validation/2017/FAQs#types>.

The following versions of software and data (see [references ⓘ](#)) were used in the production of this report:

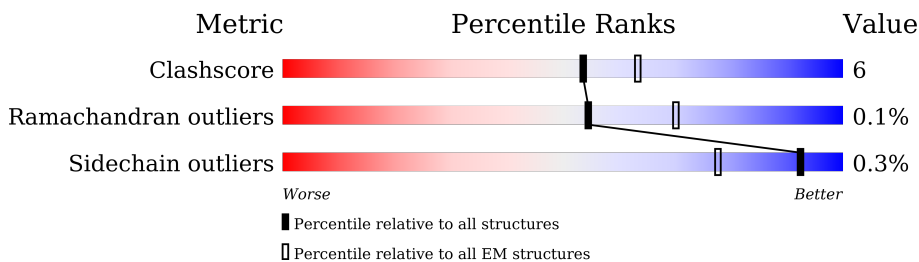
EMDB validation analysis : 0.0.1.dev43
Mogul : 1.8.5 (274361), CSD as541be (2020)
MolProbity : 4.02b-467
buster-report : 1.1.7 (2018)
Percentile statistics : 20191225.v01 (using entries in the PDB archive December 25th 2019)
MapQ : 1.9.9
Ideal geometry (proteins) : Engh & Huber (2001)
Ideal geometry (DNA, RNA) : Parkinson et al. (1996)
Validation Pipeline (wwPDB-VP) : 2.31.3

1 Overall quality at a glance

The following experimental techniques were used to determine the structure:
ELECTRON MICROSCOPY

The reported resolution of this entry is 3.10 Å.

Percentile scores (ranging between 0-100) for global validation metrics of the entry are shown in the following graphic. The table shows the number of entries on which the scores are based.



Metric	Whole archive (#Entries)	EM structures (#Entries)
Clashscore	158937	4297
Ramachandran outliers	154571	4023
Sidechain outliers	154315	3826

The table below summarises the geometric issues observed across the polymeric chains and their fit to the map. The red, orange, yellow and green segments of the bar indicate the fraction of residues that contain outliers for ≥ 3 , 2, 1 and 0 types of geometric quality criteria respectively. A grey segment represents the fraction of residues that are not modelled. The numeric value for each fraction is indicated below the corresponding segment, with a dot representing fractions $\leq 5\%$. The upper red bar (where present) indicates the fraction of residues that have poor fit to the EM map (all-atom inclusion $< 40\%$). The numeric value is given above the bar.

Mol	Chain	Length	Quality of chain
1	A	446	
2	B	415	
3	C	257	
4	D	210	
5	E	198	
6	F	414	

2 Entry composition

There are 13 unique types of molecules in this entry. The entry contains 14834 atoms, of which 0 are hydrogens and 0 are deuteriums.

In the tables below, the AltConf column contains the number of residues with at least one atom in alternate conformation and the Trace column contains the number of residues modelled with at most 2 atoms.

- Molecule 1 is a protein called Na(+)-translocating NADH-quinone reductase subunit A.

Mol	Chain	Residues	Atoms					AltConf	Trace
			Total	C	N	O	S		
1	A	446	3421	2168	585	651	17	1	0

- Molecule 2 is a protein called Na(+)-translocating NADH-quinone reductase subunit B.

Mol	Chain	Residues	Atoms					AltConf	Trace
			Total	C	N	O	S		
2	B	387	2964	1960	481	501	22	0	0

- Molecule 3 is a protein called Na(+)-translocating NADH-quinone reductase subunit C.

Mol	Chain	Residues	Atoms					AltConf	Trace
			Total	C	N	O	S		
3	C	251	1902	1204	327	367	4	0	0

- Molecule 4 is a protein called Na(+)-translocating NADH-quinone reductase subunit D.

Mol	Chain	Residues	Atoms					AltConf	Trace
			Total	C	N	O	S		
4	D	204	1562	1037	247	268	10	0	0

- Molecule 5 is a protein called Na(+)-translocating NADH-quinone reductase subunit E.

Mol	Chain	Residues	Atoms					AltConf	Trace
			Total	C	N	O	S		
5	E	198	1511	1013	230	257	11	0	0

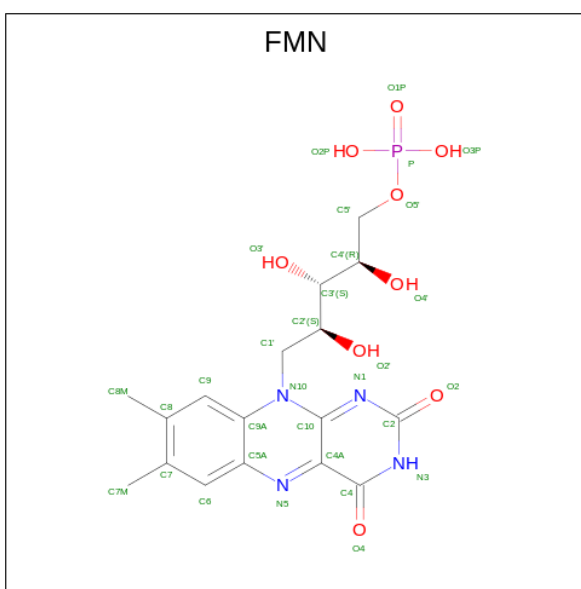
- Molecule 6 is a protein called Na(+)-translocating NADH-quinone reductase subunit F.

Mol	Chain	Residues	Atoms					AltConf	Trace
			Total	C	N	O	S		
6	F	408	3153	2018	516	595	24	0	0

There are 6 discrepancies between the modelled and reference sequences:

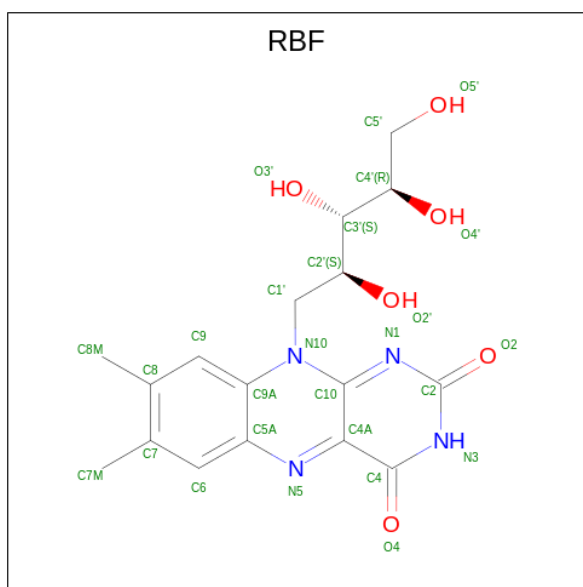
Chain	Residue	Modelled	Actual	Comment	Reference
F	409	HIS	-	expression tag	UNP A5F5Y4
F	410	HIS	-	expression tag	UNP A5F5Y4
F	411	HIS	-	expression tag	UNP A5F5Y4
F	412	HIS	-	expression tag	UNP A5F5Y4
F	413	HIS	-	expression tag	UNP A5F5Y4
F	414	HIS	-	expression tag	UNP A5F5Y4

- Molecule 7 is FLAVIN MONONUCLEOTIDE (three-letter code: FMN) (formula: C₁₇H₂₁N₄O₉P) (labeled as "Ligand of Interest" by depositor).



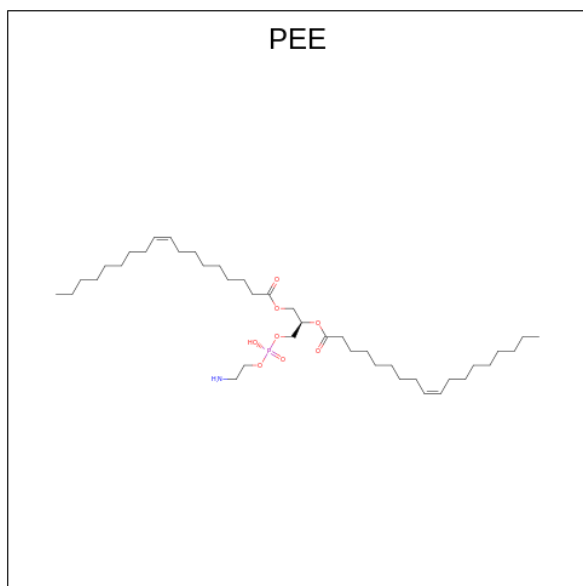
Mol	Chain	Residues	Atoms				AltConf	
			Total	C	N	O		P
7	B	1	30	17	4	8	1	0
7	C	1	30	17	4	8	1	0

- Molecule 8 is RIBOFLAVIN (three-letter code: RBF) (formula: C₁₇H₂₀N₄O₆) (labeled as "Ligand of Interest" by depositor).



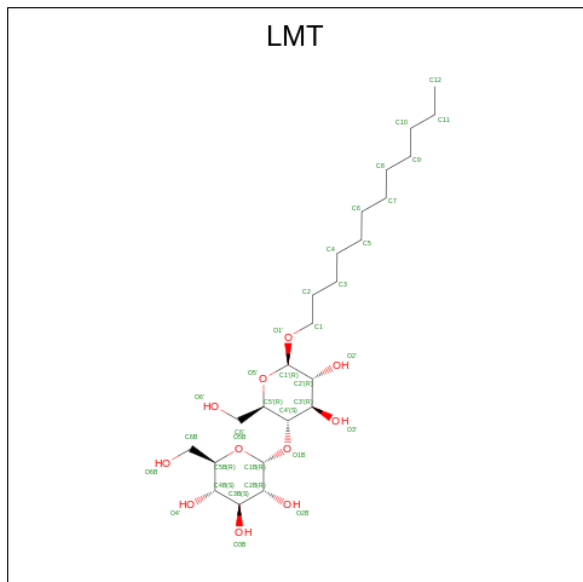
Mol	Chain	Residues	Atoms				AltConf
			Total	C	N	O	
8	B	1	27	17	4	6	0

- Molecule 9 is 1,2-dioleoyl-sn-glycero-3-phosphoethanolamine (three-letter code: PEE) (formula: $C_{41}H_{78}NO_8P$).



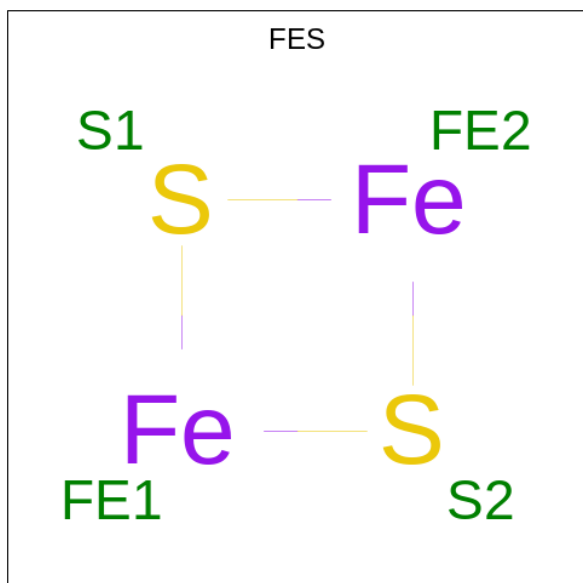
Mol	Chain	Residues	Atoms					AltConf
			Total	C	N	O	P	
9	B	1	102	82	2	16	2	0
9	B	1	102	82	2	16	2	0

- Molecule 10 is DODECYL-BETA-D-MALTOSE (three-letter code: LMT) (formula: $C_{24}H_{46}O_{11}$).



Mol	Chain	Residues	Atoms			AltConf
10	B	1	Total	C	O	0
			35	24	11	
10	D	1	Total	C	O	0
			35	24	11	

- Molecule 11 is FE2/S2 (INORGANIC) CLUSTER (three-letter code: FES) (formula: Fe_2S_2) (labeled as "Ligand of Interest" by depositor).

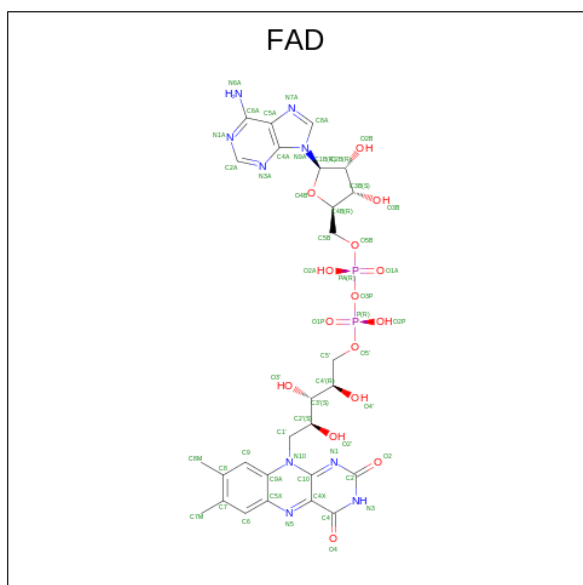


Mol	Chain	Residues	Atoms			AltConf
11	D	1	Total	Fe	S	0
			4	2	2	
11	F	1	Total	Fe	S	0
			4	2	2	

- Molecule 12 is CALCIUM ION (three-letter code: CA) (formula: Ca) (labeled as "Ligand of Interest" by depositor).

Mol	Chain	Residues	Atoms		AltConf
12	E	1	Total	Ca	0
			1	1	

- Molecule 13 is FLAVIN-ADENINE DINUCLEOTIDE (three-letter code: FAD) (formula: C₂₇H₃₃N₉O₁₅P₂) (labeled as "Ligand of Interest" by depositor).

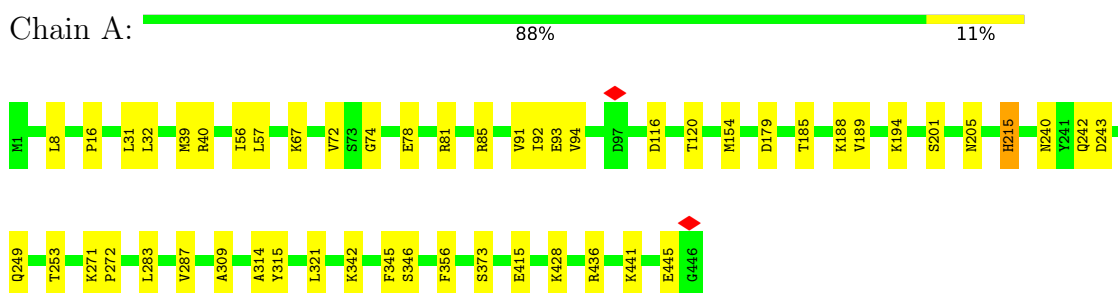


Mol	Chain	Residues	Atoms					AltConf
13	F	1	Total	C	N	O	P	0
			53	27	9	15	2	

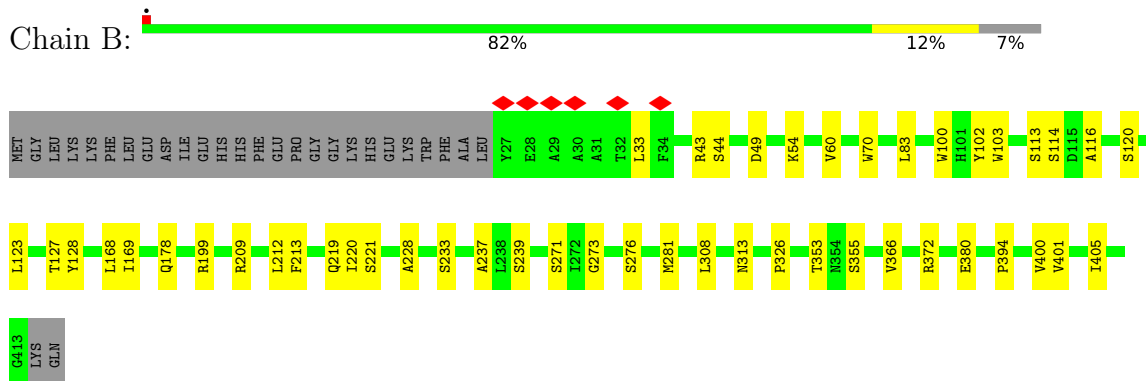
3 Residue-property plots

These plots are drawn for all protein, RNA, DNA and oligosaccharide chains in the entry. The first graphic for a chain summarises the proportions of the various outlier classes displayed in the second graphic. The second graphic shows the sequence view annotated by issues in geometry and atom inclusion in map density. Residues are color-coded according to the number of geometric quality criteria for which they contain at least one outlier: green = 0, yellow = 1, orange = 2 and red = 3 or more. A red diamond above a residue indicates a poor fit to the EM map for this residue (all-atom inclusion < 40%). Stretches of 2 or more consecutive residues without any outlier are shown as a green connector. Residues present in the sample, but not in the model, are shown in grey.

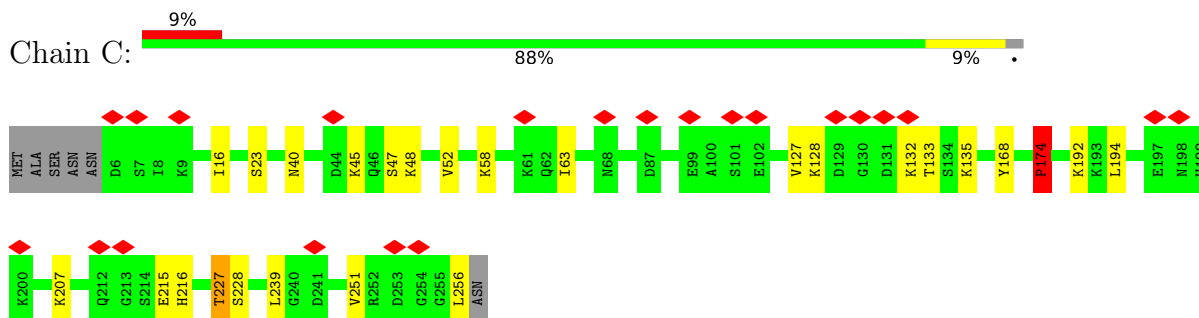
- Molecule 1: Na(+)-translocating NADH-quinone reductase subunit A



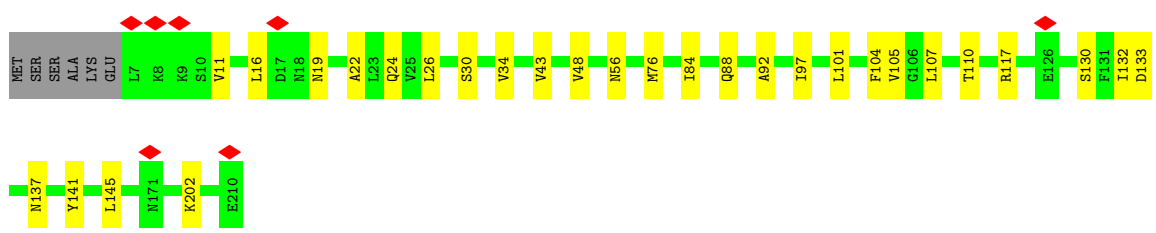
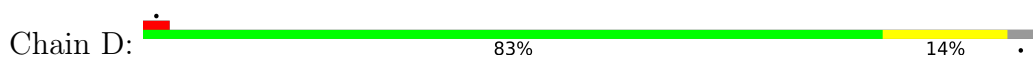
- Molecule 2: Na(+)-translocating NADH-quinone reductase subunit B



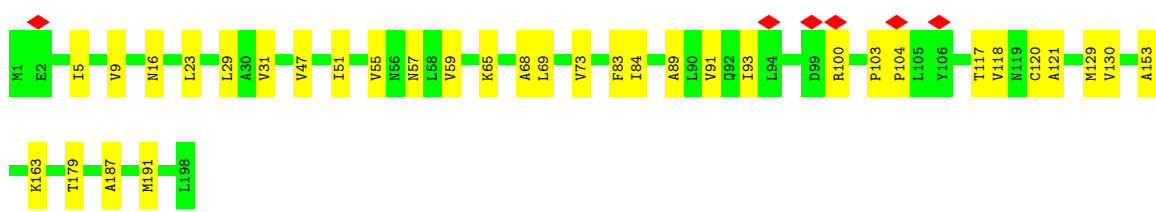
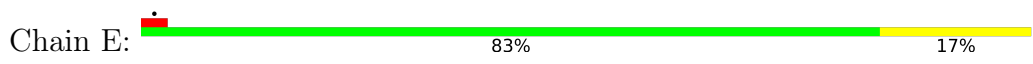
- Molecule 3: Na(+)-translocating NADH-quinone reductase subunit C



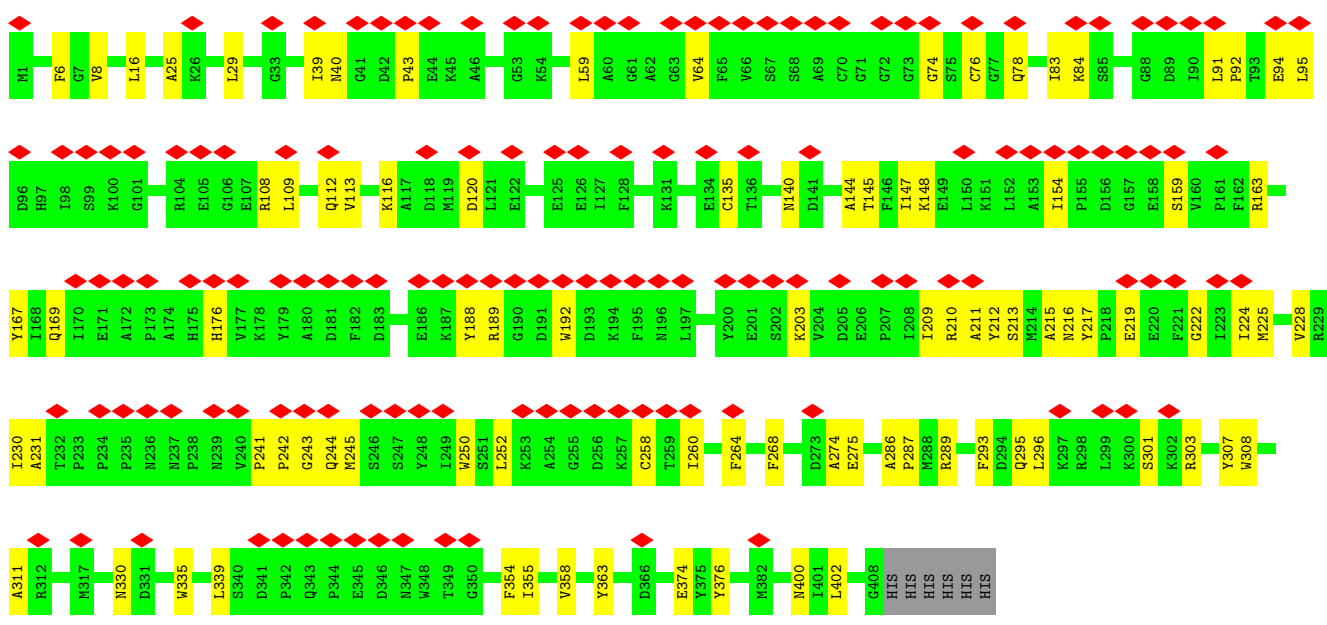
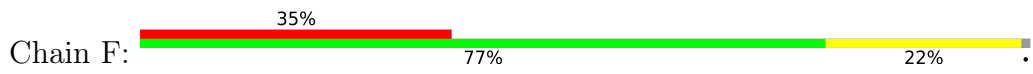
- Molecule 4: Na(+)-translocating NADH-quinone reductase subunit D



- Molecule 5: Na(+)-translocating NADH-quinone reductase subunit E



- Molecule 6: Na(+)-translocating NADH-quinone reductase subunit F



4 Experimental information

Property	Value	Source
EM reconstruction method	SINGLE PARTICLE	Depositor
Imposed symmetry	POINT, C1	Depositor
Number of particles used	72234	Depositor
Resolution determination method	FSC 0.143 CUT-OFF	Depositor
CTF correction method	PHASE FLIPPING AND AMPLITUDE CORRECTION	Depositor
Microscope	FEI TITAN KRIOS	Depositor
Voltage (kV)	300	Depositor
Electron dose ($e^-/\text{\AA}^2$)	65	Depositor
Minimum defocus (nm)	800	Depositor
Maximum defocus (nm)	2000	Depositor
Magnification	81000	Depositor
Image detector	GATAN K3 BIOQUANTUM (6k x 4k)	Depositor
Maximum map value	3.674	Depositor
Minimum map value	-2.327	Depositor
Average map value	0.000	Depositor
Map value standard deviation	0.091	Depositor
Recommended contour level	0.5	Depositor
Map size (Å)	281.6, 281.6, 281.6	wwPDB
Map dimensions	320, 320, 320	wwPDB
Map angles (°)	90.0, 90.0, 90.0	wwPDB
Pixel spacing (Å)	0.88, 0.88, 0.88	Depositor

5 Model quality i

5.1 Standard geometry i

Bond lengths and bond angles in the following residue types are not validated in this section: LMT, FAD, FES, RBF, PEE, FMN, CA

The Z score for a bond length (or angle) is the number of standard deviations the observed value is removed from the expected value. A bond length (or angle) with $|Z| > 5$ is considered an outlier worth inspection. RMSZ is the root-mean-square of all Z scores of the bond lengths (or angles).

Mol	Chain	Bond lengths		Bond angles	
		RMSZ	# Z >5	RMSZ	# Z >5
1	A	0.26	0/3485	0.44	0/4722
2	B	0.44	4/3053 (0.1%)	0.54	0/4160
3	C	0.39	1/1934 (0.1%)	0.55	3/2610 (0.1%)
4	D	0.28	0/1594	0.43	0/2164
5	E	0.27	0/1544	0.41	0/2094
6	F	0.26	0/3231	0.42	0/4377
All	All	0.32	5/14841 (0.0%)	0.47	3/20127 (0.0%)

Chiral center outliers are detected by calculating the chiral volume of a chiral center and verifying if the center is modelled as a planar moiety or with the opposite hand. A planarity outlier is detected by checking planarity of atoms in a peptide group, atoms in a mainchain group or atoms of a sidechain that are expected to be planar.

Mol	Chain	#Chirality outliers	#Planarity outliers
1	A	0	1

All (5) bond length outliers are listed below:

Mol	Chain	Res	Type	Atoms	Z	Observed(Å)	Ideal(Å)
2	B	239	SER	CA-CB	-7.85	1.41	1.52
3	C	228	SER	CA-CB	-6.56	1.43	1.52
2	B	233	SER	CA-CB	-5.83	1.44	1.52
2	B	271	SER	CA-CB	-5.29	1.45	1.52
2	B	221	SER	CA-CB	-5.28	1.45	1.52

All (3) bond angle outliers are listed below:

Mol	Chain	Res	Type	Atoms	Z	Observed(°)	Ideal(°)
3	C	227	THR	CB-CA-C	-7.29	91.93	111.60
3	C	174	PRO	N-CA-CB	-5.97	96.03	102.60

Continued on next page...

Continued from previous page...

Mol	Chain	Res	Type	Atoms	Z	Observed(°)	Ideal(°)
3	C	174	PRO	N-CA-C	5.15	125.50	112.10

There are no chirality outliers.

All (1) planarity outliers are listed below:

Mol	Chain	Res	Type	Group
1	A	215	HIS	Peptide

5.2 Too-close contacts [i](#)

In the following table, the Non-H and H(model) columns list the number of non-hydrogen atoms and hydrogen atoms in the chain respectively. The H(added) column lists the number of hydrogen atoms added and optimized by MolProbity. The Clashes column lists the number of clashes within the asymmetric unit, whereas Symm-Clashes lists symmetry-related clashes.

Mol	Chain	Non-H	H(model)	H(added)	Clashes	Symm-Clashes
1	A	3421	0	3467	30	0
2	B	2964	0	2951	25	0
3	C	1902	0	1910	15	0
4	D	1562	0	1650	18	0
5	E	1511	0	1588	20	0
6	F	3153	0	3072	61	0
7	B	30	0	19	0	0
7	C	30	0	19	1	0
8	B	27	0	20	3	0
9	B	102	0	164	1	0
10	B	35	0	45	0	0
10	D	35	0	45	1	0
11	D	4	0	0	0	0
11	F	4	0	0	1	0
12	E	1	0	0	0	0
13	F	53	0	31	2	0
All	All	14834	0	14981	164	0

The all-atom clashscore is defined as the number of clashes found per 1000 atoms (including hydrogen atoms). The all-atom clashscore for this structure is 6.

All (164) close contacts within the same asymmetric unit are listed below, sorted by their clash magnitude.

Atom-1	Atom-2	Interatomic distance (Å)	Clash overlap (Å)
6:F:148:LYS:HZ3	6:F:250:TRP:HA	1.51	0.75
4:D:110:THR:HG1	5:E:120:CYS:HG	1.35	0.73
6:F:144:ALA:HB3	6:F:147:ILE:HB	1.73	0.70
6:F:140:ASN:ND2	6:F:252:LEU:O	2.22	0.70
4:D:76:MET:HE3	5:E:118:VAL:HG21	1.75	0.69
3:C:48:LYS:HE2	3:C:168:TYR:HB3	1.75	0.68
1:A:31:LEU:HD12	1:A:57:LEU:HD12	1.77	0.67
6:F:91:LEU:HD12	6:F:112:GLN:HB3	1.77	0.65
1:A:240:ASN:ND2	1:A:243:ASP:OD2	2.29	0.65
3:C:16:ILE:HD11	6:F:16:LEU:HD21	1.79	0.65
6:F:275:GLU:OE2	6:F:363:TYR:OH	2.14	0.64
6:F:169:GLN:HB3	6:F:209:ILE:HD11	1.79	0.63
6:F:189:ARG:HA	6:F:192:TRP:HB2	1.80	0.63
2:B:353:THR:HG21	2:B:400:VAL:HG11	1.79	0.63
2:B:169:ILE:O	2:B:209:ARG:NH1	2.32	0.62
3:C:128:LYS:HE2	3:C:133:THR:HG22	1.83	0.60
4:D:24:GLN:O	4:D:26:LEU:N	2.34	0.60
6:F:39:ILE:HG13	6:F:40:ASN:H	1.66	0.60
5:E:84:ILE:HD11	5:E:118:VAL:HG13	1.83	0.59
6:F:169:GLN:HG3	6:F:264:PHE:HZ	1.66	0.59
2:B:213:PHE:HA	2:B:220:ILE:HG21	1.85	0.59
6:F:154:ILE:HD12	6:F:159:SER:HA	1.85	0.58
3:C:47:SER:HB2	3:C:63:ILE:HD13	1.86	0.58
6:F:215:ALA:O	6:F:289:ARG:NH1	2.37	0.57
2:B:178:GLN:HE22	2:B:219:GLN:HE21	1.51	0.57
1:A:39:MET:O	1:A:40:ARG:NH1	2.37	0.57
4:D:16:LEU:HB3	4:D:202:LYS:HE3	1.87	0.57
5:E:65:LYS:HB3	5:E:68:ALA:HB2	1.85	0.57
6:F:295:GLN:O	6:F:301:SER:OG	2.21	0.57
1:A:57:LEU:HD11	1:A:92:ILE:HD11	1.88	0.56
1:A:215:HIS:ND1	1:A:215:HIS:O	2.38	0.56
1:A:185:THR:HG21	1:A:189:VAL:HG23	1.88	0.56
10:D:302:LMT:O6'	10:D:302:LMT:O1B	2.24	0.55
4:D:56:ASN:HB3	4:D:130:SER:HB3	1.89	0.55
1:A:81:ARG:NH1	1:A:85:ARG:O	2.40	0.55
2:B:372:ARG:HE	2:B:380:GLU:HG3	1.70	0.55
4:D:11:VAL:HG22	4:D:132:ILE:HG23	1.87	0.55
4:D:19:ASN:HB3	4:D:22:ALA:HB3	1.89	0.55
4:D:84:ILE:O	4:D:88:GLN:HG2	2.07	0.55
6:F:215:ALA:HB2	6:F:286:ALA:HB1	1.88	0.54
3:C:40:ASN:ND2	4:D:92:ALA:O	2.40	0.54
3:C:23:SER:OG	6:F:8:VAL:HA	2.08	0.54

Continued on next page...

Continued from previous page...

Atom-1	Atom-2	Interatomic distance (Å)	Clash overlap (Å)
8:B:502:RBF:O5'	8:B:502:RBF:O3'	2.22	0.53
6:F:244:GLN:HG3	6:F:245:MET:H	1.73	0.53
1:A:16:PRO:HA	1:A:272:PRO:HB2	1.89	0.53
3:C:127:VAL:HB	3:C:135:LYS:HB2	1.90	0.53
6:F:176:HIS:CD2	6:F:203:LYS:HE2	2.44	0.53
6:F:148:LYS:HE3	6:F:250:TRP:CD2	2.44	0.53
2:B:116:ALA:HB1	2:B:120:SER:HB2	1.91	0.52
1:A:283:LEU:O	1:A:287:VAL:HG12	2.09	0.52
1:A:309:ALA:HB1	1:A:314:ALA:HA	1.91	0.52
6:F:217:TYR:CE2	6:F:219:GLU:HB2	2.44	0.52
6:F:92:PRO:HA	6:F:95:LEU:HD12	1.92	0.52
6:F:148:LYS:NZ	6:F:250:TRP:HA	2.24	0.51
1:A:154:MET:HE3	1:A:194:LYS:HG3	1.91	0.51
1:A:215:HIS:O	1:A:215:HIS:CG	2.64	0.51
6:F:231:ALA:HB3	6:F:243:GLY:HA3	1.92	0.51
1:A:441:LYS:O	1:A:445:GLU:HG2	2.11	0.51
4:D:43:VAL:HG21	4:D:97:ILE:HG21	1.93	0.50
6:F:74:GLY:HA2	11:F:501:FES:S1	2.51	0.50
6:F:230:ILE:HB	6:F:250:TRP:CE2	2.46	0.50
6:F:25:ALA:O	6:F:29:LEU:HB2	2.12	0.50
6:F:40:ASN:HB3	6:F:43:PRO:HD2	1.93	0.50
1:A:116:ASP:O	1:A:120:THR:HG23	2.12	0.50
1:A:72:VAL:HG21	1:A:94:VAL:HG22	1.95	0.49
6:F:76:CYS:SG	6:F:78:GLN:NE2	2.83	0.49
3:C:215:GLU:HG3	3:C:216:HIS:CD2	2.48	0.49
2:B:394:PRO:HG3	5:E:163:LYS:HD2	1.95	0.48
6:F:274:ALA:O	6:F:303:ARG:NH2	2.45	0.48
2:B:60:VAL:HG21	8:B:502:RBF:HC82	1.94	0.48
1:A:8:LEU:HD11	1:A:345:PHE:HZ	1.78	0.48
2:B:168:LEU:HD22	2:B:273:GLY:HA3	1.96	0.48
2:B:123:LEU:O	2:B:127:THR:HG23	2.13	0.48
6:F:354:PHE:O	6:F:358:VAL:HG23	2.13	0.48
6:F:216:ASN:ND2	6:F:225:MET:H	2.11	0.47
2:B:70:TRP:CD1	2:B:276:SER:HB2	2.49	0.47
5:E:83:PHE:CZ	5:E:130:VAL:HG11	2.49	0.47
6:F:216:ASN:HD22	6:F:225:MET:H	1.62	0.47
6:F:217:TYR:HE2	6:F:219:GLU:HB2	1.80	0.47
6:F:167:TYR:HD2	6:F:211:ALA:HB1	1.80	0.47
6:F:213:SER:OG	13:F:502:FAD:O4	2.28	0.47
6:F:286:ALA:HB3	6:F:287:PRO:HD3	1.97	0.47
3:C:251:VAL:HG22	3:C:256:LEU:HD13	1.97	0.47

Continued on next page...

Continued from previous page...

Atom-1	Atom-2	Interatomic distance (Å)	Clash overlap (Å)
5:E:31:VAL:HG12	5:E:31:VAL:O	2.15	0.47
6:F:252:LEU:HD11	6:F:258:CYS:SG	2.55	0.46
3:C:194:LEU:HD22	3:C:239:LEU:HD11	1.96	0.46
5:E:16:ASN:HD21	5:E:153:ALA:HB2	1.80	0.46
1:A:415:GLU:OE2	1:A:436:ARG:NE	2.45	0.46
3:C:58:LYS:HA	3:C:58:LYS:HD2	1.72	0.46
4:D:133:ASP:OD1	4:D:137:ASN:ND2	2.49	0.46
1:A:56:ILE:HD12	1:A:67:LYS:HD2	1.98	0.46
2:B:281:MET:HE1	9:B:503:PEE:H24	1.97	0.46
6:F:83:ILE:HD13	6:F:108:ARG:HE	1.81	0.46
6:F:109:LEU:O	6:F:113:VAL:HG23	2.16	0.46
6:F:163:ARG:HB2	6:F:268:PHE:CE1	2.51	0.46
1:A:188:LYS:HA	1:A:205:ASN:OD1	2.15	0.45
5:E:29:LEU:HD22	5:E:179:THR:HG22	1.97	0.45
6:F:94:GLU:HB3	6:F:112:GLN:HG3	1.97	0.45
1:A:346:SER:HA	2:B:49:ASP:OD1	2.16	0.45
6:F:243:GLY:HA2	13:F:502:FAD:H52A	1.97	0.45
1:A:249:GLN:O	1:A:253:THR:OG1	2.33	0.45
5:E:103:PRO:N	5:E:104:PRO:HD2	2.32	0.45
4:D:104:PHE:HA	4:D:107:LEU:HB2	1.99	0.44
5:E:23:LEU:HB3	5:E:121:ALA:HA	1.99	0.44
2:B:100:TRP:HA	2:B:103:TRP:CD1	2.52	0.44
6:F:217:TYR:CD1	6:F:293:PHE:HB3	2.52	0.44
6:F:116:LYS:HE2	6:F:116:LYS:HB2	1.67	0.44
6:F:209:ILE:O	6:F:210:ARG:NH1	2.43	0.44
2:B:113:SER:OG	2:B:114:SER:N	2.51	0.44
6:F:224:ILE:HG21	6:F:260:ILE:HD13	1.98	0.44
5:E:57:ASN:HB2	5:E:129:MET:SD	2.58	0.44
6:F:311:ALA:O	6:F:339:LEU:HA	2.18	0.44
1:A:428:LYS:HA	1:A:428:LYS:HD3	1.84	0.44
1:A:271:LYS:HE2	1:A:271:LYS:HB2	1.89	0.43
2:B:313:ASN:HD21	2:B:326:PRO:HA	1.83	0.43
7:C:301:FMN:H4'	7:C:301:FMN:H1'2	1.73	0.43
4:D:141:TYR:CE2	4:D:145:LEU:HD11	2.52	0.43
1:A:373:SER:OG	2:B:199:ARG:NH1	2.52	0.43
2:B:128:TYR:CZ	2:B:228:ALA:HB1	2.54	0.43
6:F:159:SER:HB2	6:F:222:GLY:H	1.84	0.43
4:D:56:ASN:HD21	4:D:117:ARG:HB3	1.83	0.43
5:E:91:VAL:HG21	5:E:117:THR:HA	2.00	0.43
1:A:74:GLY:HA3	1:A:93:GLU:O	2.18	0.43
2:B:308:LEU:HD22	2:B:366:VAL:HG13	2.00	0.43

Continued on next page...

Continued from previous page...

Atom-1	Atom-2	Interatomic distance (Å)	Clash overlap (Å)
2:B:401:VAL:O	2:B:405:ILE:HG13	2.19	0.43
6:F:145:THR:HA	6:F:188:TYR:CG	2.54	0.43
3:C:45:LYS:HE2	3:C:45:LYS:HB3	1.84	0.43
6:F:308:TRP:HB3	6:F:355:ILE:HD11	2.01	0.43
6:F:84:LYS:HE3	6:F:120:ASP:HB2	2.01	0.42
6:F:244:GLN:HG3	6:F:245:MET:N	2.34	0.42
5:E:73:VAL:HG21	6:F:6:PHE:HD2	1.84	0.42
2:B:43:ARG:HB3	2:B:44:SER:H	1.62	0.42
1:A:179:ASP:OD1	1:A:201:SER:OG	2.35	0.42
6:F:212:TYR:CD1	6:F:228:VAL:HG12	2.54	0.42
6:F:241:PRO:HA	6:F:242:PRO:HD3	1.94	0.42
2:B:100:TRP:HA	2:B:103:TRP:NE1	2.34	0.42
5:E:89:ALA:O	5:E:93:ILE:HG13	2.20	0.42
4:D:30:SER:O	4:D:34:VAL:HG22	2.20	0.42
2:B:83:LEU:HD11	2:B:102:TYR:CZ	2.54	0.41
8:B:502:RBF:HC3'	8:B:502:RBF:N1	2.34	0.41
6:F:376:TYR:CE2	6:F:402:LEU:HD13	2.55	0.41
1:A:342:LYS:HG2	1:A:356:PHE:HE2	1.84	0.41
2:B:353:THR:HG22	2:B:355:SER:H	1.85	0.41
1:A:32:LEU:HD21	1:A:315:TYR:HB2	2.01	0.41
5:E:187:ALA:O	5:E:191:MET:HG3	2.20	0.41
6:F:135:CYS:SG	6:F:154:ILE:HA	2.60	0.41
2:B:33:LEU:HD12	2:B:54:LYS:HD3	2.03	0.41
4:D:101:LEU:O	4:D:105:VAL:HG23	2.20	0.41
5:E:47:VAL:O	5:E:51:ILE:HG12	2.20	0.41
5:E:69:LEU:HD12	5:E:69:LEU:HA	1.92	0.41
6:F:296:LEU:HD22	6:F:330:ASN:ND2	2.35	0.41
5:E:5:ILE:O	5:E:9:VAL:HG23	2.20	0.41
6:F:59:LEU:HB3	6:F:64:VAL:HG23	2.02	0.41
3:C:48:LYS:O	3:C:52:VAL:HG23	2.20	0.41
6:F:374:GLU:HA	6:F:400:ASN:HB3	2.02	0.41
1:A:242:GLN:NE2	1:A:321:LEU:HD22	2.35	0.41
1:A:78:GLU:HB2	1:A:91:VAL:HB	2.03	0.40
3:C:132:LYS:HA	3:C:132:LYS:HD2	1.78	0.40
3:C:192:LYS:HA	3:C:192:LYS:HD3	1.90	0.40
5:E:55:VAL:O	5:E:59:VAL:HG23	2.21	0.40
4:D:30:SER:HB2	4:D:141:TYR:OH	2.21	0.40
4:D:48:VAL:HG21	4:D:141:TYR:CE2	2.57	0.40
6:F:140:ASN:O	6:F:148:LYS:HD2	2.21	0.40
6:F:307:TYR:HB3	6:F:335:TRP:HB2	2.03	0.40

There are no symmetry-related clashes.

5.3 Torsion angles [i](#)

5.3.1 Protein backbone [i](#)

In the following table, the Percentiles column shows the percent Ramachandran outliers of the chain as a percentile score with respect to all PDB entries followed by that with respect to all EM entries.

The Analysed column shows the number of residues for which the backbone conformation was analysed, and the total number of residues.

Mol	Chain	Analysed	Favoured	Allowed	Outliers	Percentiles	
1	A	445/446 (100%)	429 (96%)	16 (4%)	0	100	100
2	B	385/415 (93%)	371 (96%)	13 (3%)	1 (0%)	41	73
3	C	249/257 (97%)	244 (98%)	4 (2%)	1 (0%)	34	69
4	D	202/210 (96%)	195 (96%)	7 (4%)	0	100	100
5	E	196/198 (99%)	190 (97%)	6 (3%)	0	100	100
6	F	406/414 (98%)	393 (97%)	13 (3%)	0	100	100
All	All	1883/1940 (97%)	1822 (97%)	59 (3%)	2 (0%)	54	83

All (2) Ramachandran outliers are listed below:

Mol	Chain	Res	Type
3	C	174	PRO
2	B	237	ALA

5.3.2 Protein sidechains [i](#)

In the following table, the Percentiles column shows the percent sidechain outliers of the chain as a percentile score with respect to all PDB entries followed by that with respect to all EM entries.

The Analysed column shows the number of residues for which the sidechain conformation was analysed, and the total number of residues.

Mol	Chain	Analysed	Rotameric	Outliers	Percentiles	
1	A	376/376 (100%)	376 (100%)	0	100	100
2	B	296/320 (92%)	295 (100%)	1 (0%)	92	96
3	C	200/205 (98%)	197 (98%)	3 (2%)	65	85
4	D	171/176 (97%)	171 (100%)	0	100	100
5	E	165/165 (100%)	164 (99%)	1 (1%)	86	94

Continued on next page...

Continued from previous page...

Mol	Chain	Analysed	Rotameric	Outliers	Percentiles	
6	F	334/343 (97%)	334 (100%)	0	100	100
All	All	1542/1585 (97%)	1537 (100%)	5 (0%)	92	96

All (5) residues with a non-rotameric sidechain are listed below:

Mol	Chain	Res	Type
2	B	212	LEU
3	C	174	PRO
3	C	207	LYS
3	C	227	THR
5	E	100	ARG

Sometimes sidechains can be flipped to improve hydrogen bonding and reduce clashes. All (26) such sidechains are listed below:

Mol	Chain	Res	Type
1	A	209	HIS
1	A	225	HIS
2	B	74	ASN
2	B	219	GLN
2	B	240	GLN
2	B	243	GLN
2	B	251	ASN
2	B	252	ASN
3	C	37	GLN
3	C	40	ASN
3	C	46	GLN
3	C	216	HIS
4	D	56	ASN
4	D	88	GLN
4	D	171	ASN
4	D	176	GLN
5	E	79	ASN
6	F	169	GLN
6	F	175	HIS
6	F	176	HIS
6	F	216	ASN
6	F	295	GLN
6	F	330	ASN
6	F	347	ASN
6	F	356	HIS
6	F	367	HIS

5.3.3 RNA [i](#)

There are no RNA molecules in this entry.

5.4 Non-standard residues in protein, DNA, RNA chains [i](#)

There are no non-standard protein/DNA/RNA residues in this entry.

5.5 Carbohydrates [i](#)

There are no monosaccharides in this entry.

5.6 Ligand geometry [i](#)

Of 11 ligands modelled in this entry, 1 is monoatomic - leaving 10 for Mogul analysis.

In the following table, the Counts columns list the number of bonds (or angles) for which Mogul statistics could be retrieved, the number of bonds (or angles) that are observed in the model and the number of bonds (or angles) that are defined in the Chemical Component Dictionary. The Link column lists molecule types, if any, to which the group is linked. The Z score for a bond length (or angle) is the number of standard deviations the observed value is removed from the expected value. A bond length (or angle) with $|Z| > 2$ is considered an outlier worth inspection. RMSZ is the root-mean-square of all Z scores of the bond lengths (or angles).

Mol	Type	Chain	Res	Link	Bond lengths			Bond angles		
					Counts	RMSZ	# Z > 2	Counts	RMSZ	# Z > 2
8	RBF	B	502	-	29,29,29	2.91	10 (34%)	41,43,43	1.88	11 (26%)
9	PEE	B	505	-	50,50,50	1.15	6 (12%)	53,55,55	1.13	2 (3%)
10	LMT	B	504	-	36,36,36	1.19	6 (16%)	47,47,47	0.98	2 (4%)
11	FES	D	301	-	0,4,4	-	-	-	-	-
13	FAD	F	502	-	53,58,58	0.46	0	68,89,89	0.55	2 (2%)
10	LMT	D	302	-	36,36,36	1.17	6 (16%)	47,47,47	1.05	3 (6%)
11	FES	F	501	6	0,4,4	-	-	-	-	-
7	FMN	C	301	3	29,32,33	1.11	2 (6%)	40,47,50	0.90	2 (5%)
7	FMN	B	501	2	29,32,33	1.14	3 (10%)	40,47,50	0.87	2 (5%)
9	PEE	B	503	-	50,50,50	1.14	6 (12%)	53,55,55	1.13	3 (5%)

In the following table, the Chirals column lists the number of chiral outliers, the number of chiral centers analysed, the number of these observed in the model and the number defined in the Chemical Component Dictionary. Similar counts are reported in the Torsion and Rings columns. '-' means no outliers of that kind were identified.

Mol	Type	Chain	Res	Link	Chirals	Torsions	Rings
8	RBF	B	502	-	-	9/14/14/14	0/3/3/3
9	PEE	B	505	-	-	23/54/54/54	-
10	LMT	B	504	-	-	8/21/61/61	0/2/2/2
11	FES	D	301	-	-	-	0/1/1/1
13	FAD	F	502	-	-	10/30/50/50	0/6/6/6
10	LMT	D	302	-	-	8/21/61/61	0/2/2/2
11	FES	F	501	6	-	-	0/1/1/1
7	FMN	C	301	3	-	7/15/17/18	0/3/3/3
7	FMN	B	501	2	-	6/15/17/18	0/3/3/3
9	PEE	B	503	-	-	36/54/54/54	-

All (39) bond length outliers are listed below:

Mol	Chain	Res	Type	Atoms	Z	Observed(Å)	Ideal(Å)
8	B	502	RBF	C4A-N5	7.46	1.45	1.30
8	B	502	RBF	C10-N1	6.50	1.46	1.33
8	B	502	RBF	C5A-N5	5.16	1.49	1.39
8	B	502	RBF	C9A-N10	4.88	1.49	1.41
8	B	502	RBF	C2-N1	4.73	1.48	1.36
8	B	502	RBF	C2-N3	4.23	1.48	1.39
8	B	502	RBF	C4-N3	3.78	1.45	1.38
8	B	502	RBF	C10-N10	3.73	1.45	1.37
9	B	505	PEE	C18-C19	3.71	1.53	1.31
9	B	505	PEE	C39-C38	3.71	1.53	1.31
9	B	503	PEE	C39-C38	3.71	1.53	1.31
9	B	503	PEE	C18-C19	3.64	1.52	1.31
8	B	502	RBF	O2-C2	-3.10	1.18	1.24
7	C	301	FMN	C2-N3	-2.93	1.32	1.39
10	B	504	LMT	O3'-C3'	-2.68	1.36	1.43
10	D	302	LMT	O3'-C3'	-2.64	1.36	1.43
8	B	502	RBF	O4-C4	-2.62	1.18	1.23
9	B	505	PEE	O2-C2	-2.52	1.40	1.46
10	B	504	LMT	O2B-C2B	-2.46	1.37	1.43
9	B	503	PEE	O3-C30	2.44	1.40	1.33
10	B	504	LMT	O3B-C3B	-2.42	1.37	1.43
9	B	505	PEE	O3-C30	2.41	1.40	1.33
10	D	302	LMT	O2'-C2'	-2.40	1.37	1.43
10	D	302	LMT	O3B-C3B	-2.35	1.37	1.43
10	B	504	LMT	O2'-C2'	-2.35	1.37	1.43
7	B	501	FMN	C2-N3	-2.29	1.33	1.39
10	D	302	LMT	O2B-C2B	-2.28	1.37	1.43

Continued on next page...

Continued from previous page...

Mol	Chain	Res	Type	Atoms	Z	Observed(Å)	Ideal(Å)
10	B	504	LMT	O4'-C4B	-2.26	1.37	1.43
9	B	503	PEE	O2-C10	2.23	1.40	1.34
10	D	302	LMT	O1'-C1'	-2.22	1.36	1.40
9	B	503	PEE	O2-C2	-2.20	1.41	1.46
7	B	501	FMN	O2'-C2'	-2.18	1.38	1.43
9	B	505	PEE	O2-C10	2.13	1.40	1.34
10	D	302	LMT	O4'-C4B	-2.13	1.38	1.43
9	B	503	PEE	O3-C3	-2.12	1.40	1.45
7	C	301	FMN	O2-C2	-2.07	1.20	1.24
9	B	505	PEE	O3-C3	-2.06	1.40	1.45
10	B	504	LMT	O1'-C1'	-2.05	1.36	1.40
7	B	501	FMN	C1'-C2'	-2.00	1.49	1.52

All (27) bond angle outliers are listed below:

Mol	Chain	Res	Type	Atoms	Z	Observed(°)	Ideal(°)
8	B	502	RBF	C7M-C7-C6	-6.35	107.75	119.49
8	B	502	RBF	C7M-C7-C8	5.64	132.29	120.74
9	B	505	PEE	O2-C10-C11	3.81	119.72	111.50
9	B	503	PEE	O2-C10-C11	3.81	119.71	111.50
8	B	502	RBF	C4-N3-C2	-3.30	119.54	125.64
13	F	502	FAD	P-O3P-PA	-2.78	123.30	132.83
10	D	302	LMT	C3'-C4'-C5'	-2.68	104.78	110.93
8	B	502	RBF	C4A-C4-N3	2.67	119.98	113.19
8	B	502	RBF	C4A-C10-N10	2.65	120.36	116.48
10	B	504	LMT	C3'-C4'-C5'	-2.60	104.97	110.93
10	B	504	LMT	C1'-O5'-C5'	-2.57	108.64	113.69
9	B	503	PEE	O3-C30-C31	2.54	119.88	111.91
8	B	502	RBF	O4-C4-C4A	-2.51	119.95	126.60
9	B	505	PEE	O3-C30-C31	2.46	119.62	111.91
7	C	301	FMN	N3-C2-N1	2.33	123.95	119.38
8	B	502	RBF	C10-C4A-N5	-2.28	120.02	124.86
13	F	502	FAD	C5A-C6A-N6A	2.28	123.82	120.35
10	D	302	LMT	C1'-O5'-C5'	-2.28	109.21	113.69
7	C	301	FMN	C4-N3-C2	-2.25	121.49	125.64
8	B	502	RBF	C5A-C9A-N10	2.22	120.25	117.95
10	D	302	LMT	O1B-C4'-C3'	2.09	112.84	107.28
8	B	502	RBF	C4'-C3'-C2'	-2.09	109.01	113.36
7	B	501	FMN	C4A-C4-N3	2.08	118.48	113.19
8	B	502	RBF	C9A-C5A-N5	-2.04	120.22	122.43
7	B	501	FMN	C4-N3-C2	-2.04	121.88	125.64
9	B	503	PEE	C20-C19-C18	-2.03	109.11	124.73

Continued on next page...

Continued from previous page...

Mol	Chain	Res	Type	Atoms	Z	Observed(°)	Ideal(°)
8	B	502	RBF	C4A-C10-N1	-2.02	120.05	124.73

There are no chirality outliers.

All (107) torsion outliers are listed below:

Mol	Chain	Res	Type	Atoms
7	B	501	FMN	C3'-C4'-C5'-O5'
7	B	501	FMN	O4'-C4'-C5'-O5'
7	C	301	FMN	N10-C1'-C2'-O2'
7	C	301	FMN	C1'-C2'-C3'-O3'
7	C	301	FMN	C1'-C2'-C3'-C4'
7	C	301	FMN	O2'-C2'-C3'-O3'
7	C	301	FMN	C3'-C4'-C5'-O5'
7	C	301	FMN	O4'-C4'-C5'-O5'
8	B	502	RBF	N10-C1'-C2'-O2'
8	B	502	RBF	N10-C1'-C2'-C3'
8	B	502	RBF	C2'-C3'-C4'-O4'
8	B	502	RBF	O3'-C3'-C4'-O4'
8	B	502	RBF	O3'-C3'-C4'-C5'
9	B	503	PEE	C11-C10-O2-C2
9	B	503	PEE	O4-C10-O2-C2
9	B	503	PEE	C1-O3P-P-O2P
9	B	503	PEE	C1-O3P-P-O1P
9	B	503	PEE	C4-O4P-P-O3P
9	B	503	PEE	C4-O4P-P-O2P
9	B	503	PEE	C4-O4P-P-O1P
9	B	503	PEE	O4P-C4-C5-N
9	B	505	PEE	C1-O3P-P-O2P
10	B	504	LMT	C2-C1-O1'-C1'
13	F	502	FAD	O4B-C4B-C5B-O5B
13	F	502	FAD	C3B-C4B-C5B-O5B
13	F	502	FAD	C1'-C2'-C3'-O3'
13	F	502	FAD	C1'-C2'-C3'-C4'
13	F	502	FAD	O2'-C2'-C3'-O3'
13	F	502	FAD	O2'-C2'-C3'-C4'
13	F	502	FAD	C5'-O5'-P-O1P
13	F	502	FAD	C5'-O5'-P-O2P
10	D	302	LMT	C3'-C4'-O1B-C1B
9	B	503	PEE	O5-C30-O3-C3
9	B	503	PEE	C31-C30-O3-C3
9	B	503	PEE	C17-C18-C19-C20
9	B	505	PEE	C17-C18-C19-C20

Continued on next page...

Continued from previous page...

Mol	Chain	Res	Type	Atoms
10	D	302	LMT	O5'-C5'-C6'-O6'
10	B	504	LMT	O5'-C5'-C6'-O6'
8	B	502	RBF	C2'-C3'-C4'-C5'
10	B	504	LMT	C4'-C5'-C6'-O6'
7	B	501	FMN	O3'-C3'-C4'-C5'
9	B	503	PEE	C1-O3P-P-O4P
9	B	505	PEE	C1-O3P-P-O4P
9	B	503	PEE	C20-C21-C22-C23
9	B	503	PEE	C21-C22-C23-C24
7	C	301	FMN	O2'-C2'-C3'-C4'
10	D	302	LMT	C4'-C5'-C6'-O6'
9	B	503	PEE	C43-C44-C45-C46
9	B	505	PEE	C40-C41-C42-C43
9	B	505	PEE	C12-C13-C14-C15
9	B	505	PEE	C37-C38-C39-C40
7	B	501	FMN	C2'-C3'-C4'-C5'
9	B	503	PEE	C10-C11-C12-C13
9	B	503	PEE	C19-C20-C21-C22
9	B	505	PEE	C35-C36-C37-C38
10	D	302	LMT	O1'-C1-C2-C3
9	B	503	PEE	C34-C35-C36-C37
9	B	503	PEE	C39-C40-C41-C42
9	B	503	PEE	C40-C41-C42-C43
9	B	503	PEE	C31-C32-C33-C34
9	B	503	PEE	C14-C15-C16-C17
7	B	501	FMN	C2'-C3'-C4'-O4'
9	B	503	PEE	C15-C16-C17-C18
9	B	505	PEE	C19-C20-C21-C22
9	B	503	PEE	C3-C2-O2-C10
9	B	503	PEE	O2-C2-C3-O3
9	B	503	PEE	C44-C45-C46-C47
10	D	302	LMT	C1-C2-C3-C4
9	B	503	PEE	C22-C23-C24-C25
9	B	505	PEE	C31-C32-C33-C34
10	D	302	LMT	C9-C10-C11-C12
9	B	503	PEE	C13-C14-C15-C16
10	B	504	LMT	O5'-C1'-O1'-C1
9	B	503	PEE	C2-C1-O3P-P
9	B	505	PEE	C13-C14-C15-C16
9	B	505	PEE	O3P-C1-C2-C3
9	B	503	PEE	C23-C24-C25-C26
10	D	302	LMT	C11-C10-C9-C8

Continued on next page...

Continued from previous page...

Mol	Chain	Res	Type	Atoms
9	B	503	PEE	O3P-C1-C2-O2
10	B	504	LMT	O1'-C1-C2-C3
13	F	502	FAD	C5'-O5'-P-O3P
13	F	502	FAD	C4'-C5'-O5'-P
9	B	503	PEE	O3P-C1-C2-C3
9	B	503	PEE	C42-C43-C44-C45
8	B	502	RBF	C1'-C2'-C3'-O3'
9	B	505	PEE	O3P-C1-C2-O2
8	B	502	RBF	O2'-C2'-C3'-C4'
9	B	505	PEE	C43-C44-C45-C46
7	B	501	FMN	O3'-C3'-C4'-O4'
9	B	505	PEE	C4-O4P-P-O3P
9	B	505	PEE	C14-C15-C16-C17
10	D	302	LMT	C3-C4-C5-C6
9	B	503	PEE	C1-C2-C3-O3
9	B	505	PEE	C36-C37-C38-C39
10	B	504	LMT	C9-C10-C11-C12
9	B	505	PEE	O2-C2-C3-O3
9	B	505	PEE	C42-C43-C44-C45
9	B	503	PEE	C38-C39-C40-C41
9	B	503	PEE	C18-C19-C20-C21
9	B	505	PEE	C18-C19-C20-C21
9	B	505	PEE	C38-C39-C40-C41
8	B	502	RBF	O2'-C2'-C3'-O3'
9	B	505	PEE	O2-C10-C11-C12
10	B	504	LMT	C11-C10-C9-C8
9	B	505	PEE	O4-C10-C11-C12
10	B	504	LMT	C5-C6-C7-C8
9	B	505	PEE	C10-C11-C12-C13

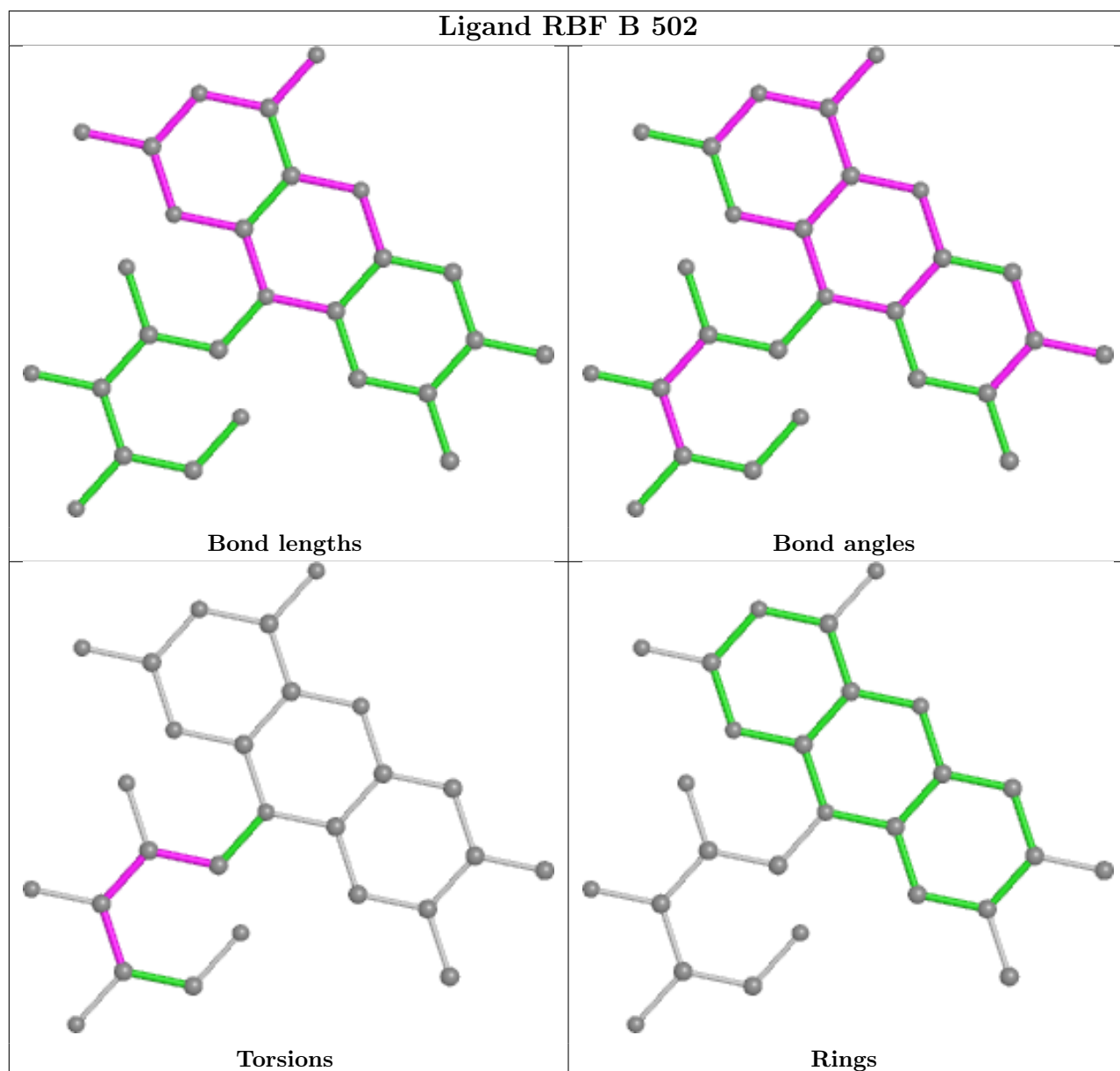
There are no ring outliers.

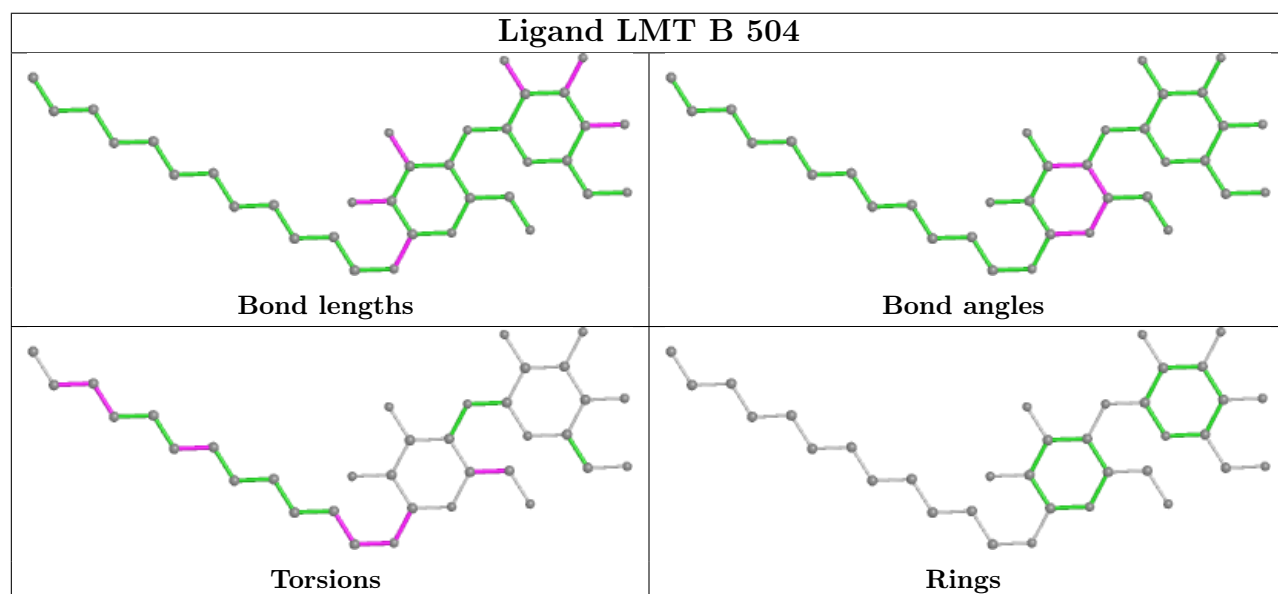
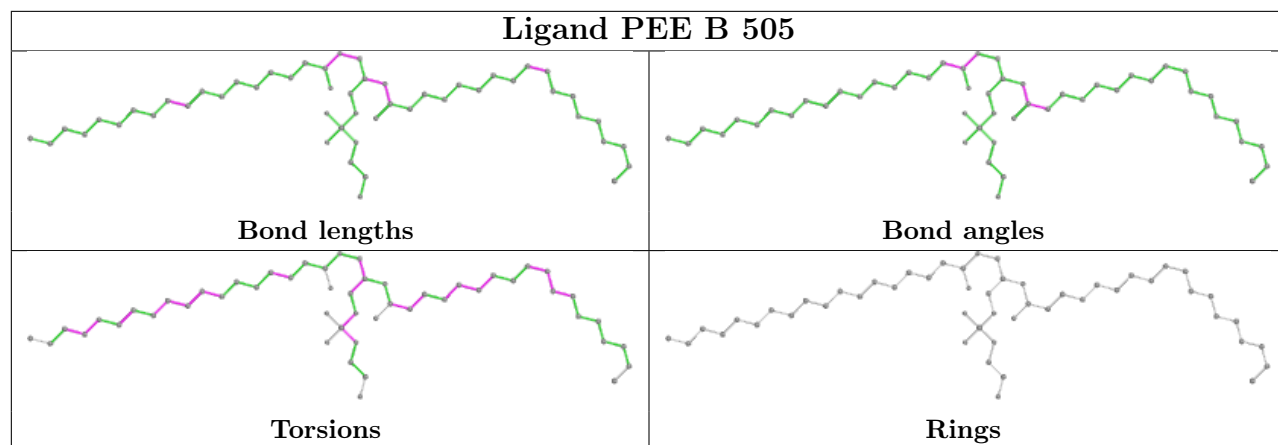
6 monomers are involved in 9 short contacts:

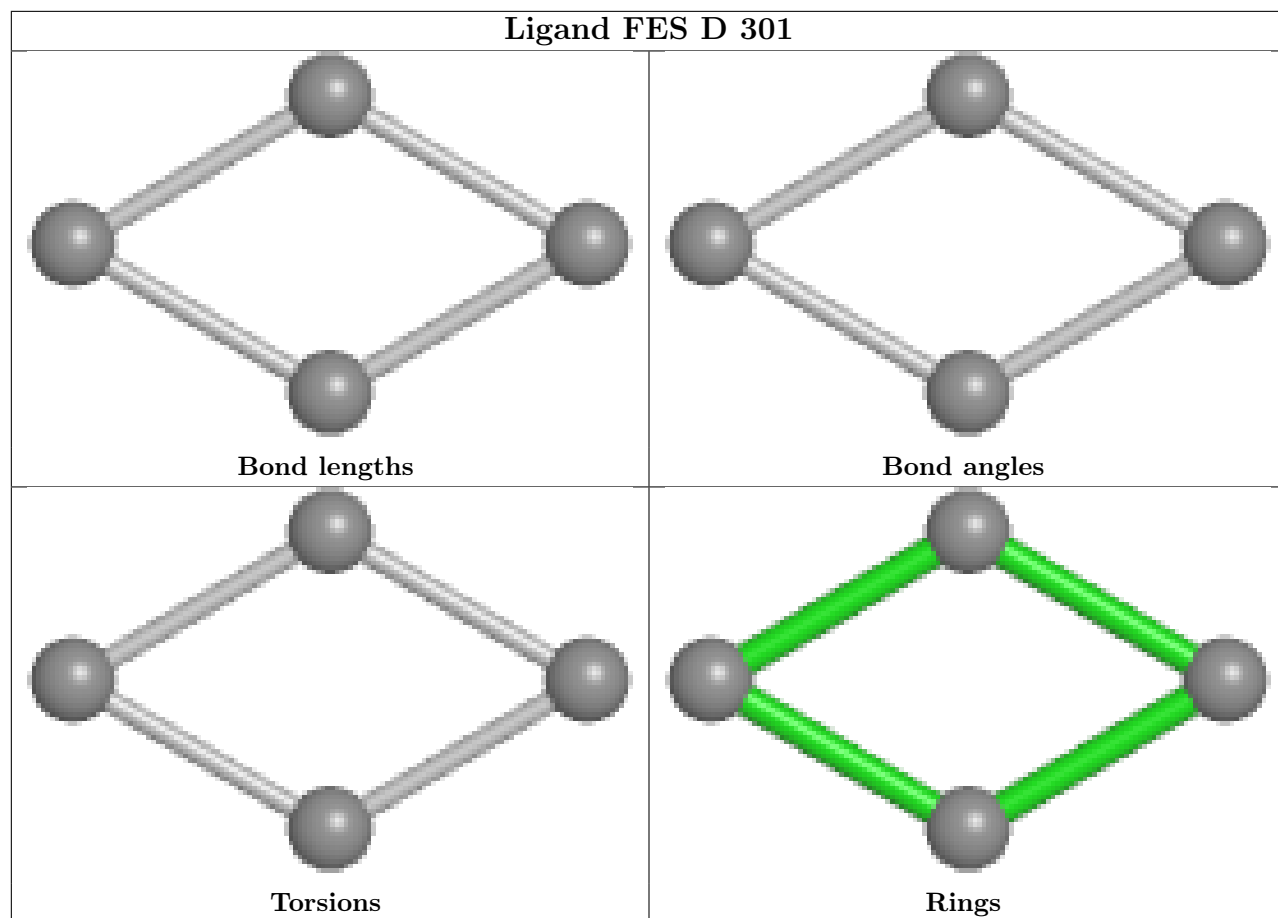
Mol	Chain	Res	Type	Clashes	Symm-Clashes
8	B	502	RBF	3	0
13	F	502	FAD	2	0
10	D	302	LMT	1	0
11	F	501	FES	1	0
7	C	301	FMN	1	0
9	B	503	PEE	1	0

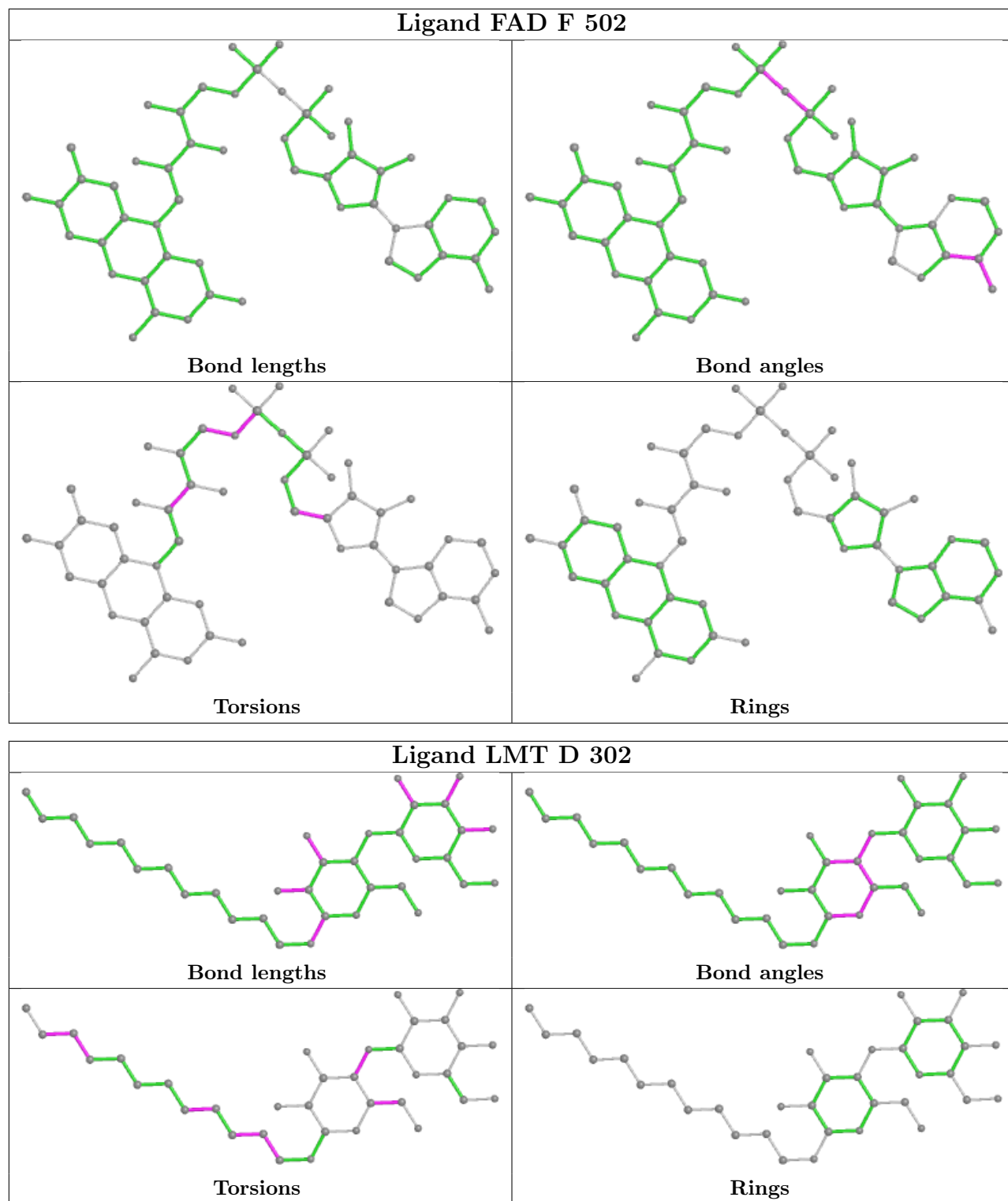
The following is a two-dimensional graphical depiction of Mogul quality analysis of bond lengths,

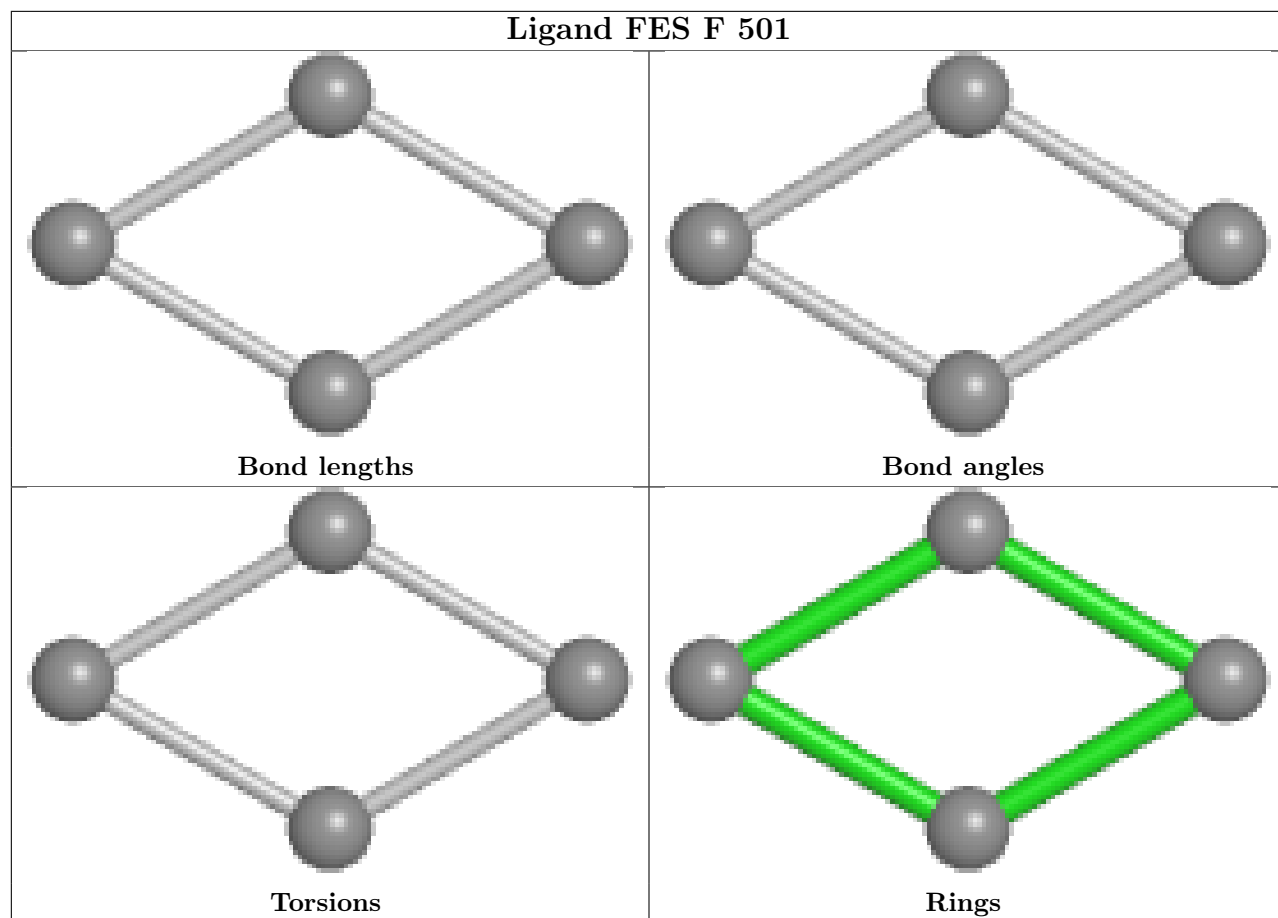
bond angles, torsion angles, and ring geometry for all instances of the Ligand of Interest. In addition, ligands with molecular weight > 250 and outliers as shown on the validation Tables will also be included. For torsion angles, if less than 5% of the Mogul distribution of torsion angles is within 10 degrees of the torsion angle in question, then that torsion angle is considered an outlier. Any bond that is central to one or more torsion angles identified as an outlier by Mogul will be highlighted in the graph. For rings, the root-mean-square deviation (RMSD) between the ring in question and similar rings identified by Mogul is calculated over all ring torsion angles. If the average RMSD is greater than 60 degrees and the minimal RMSD between the ring in question and any Mogul-identified rings is also greater than 60 degrees, then that ring is considered an outlier. The outliers are highlighted in purple. The color gray indicates Mogul did not find sufficient equivalents in the CSD to analyse the geometry.

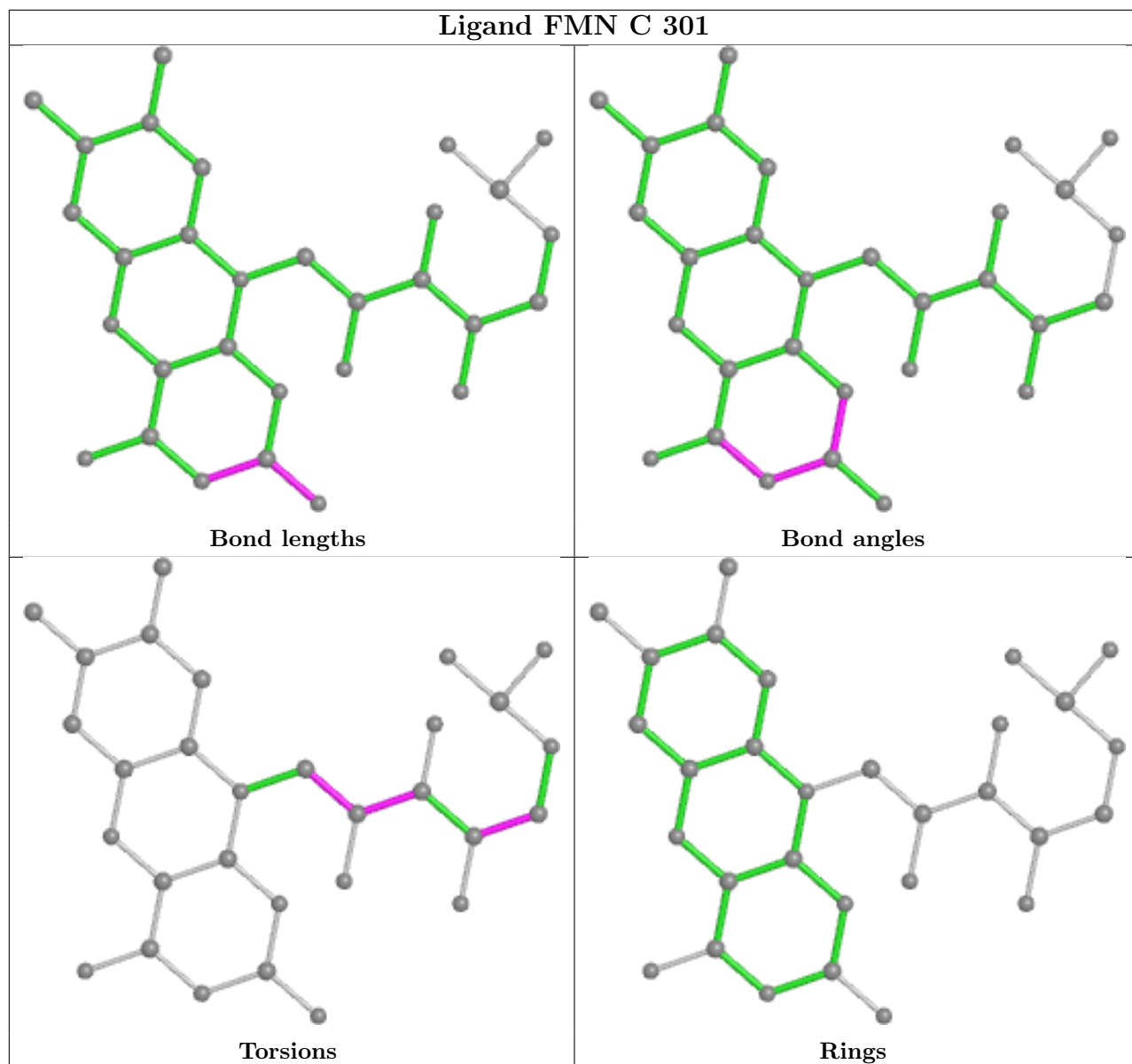


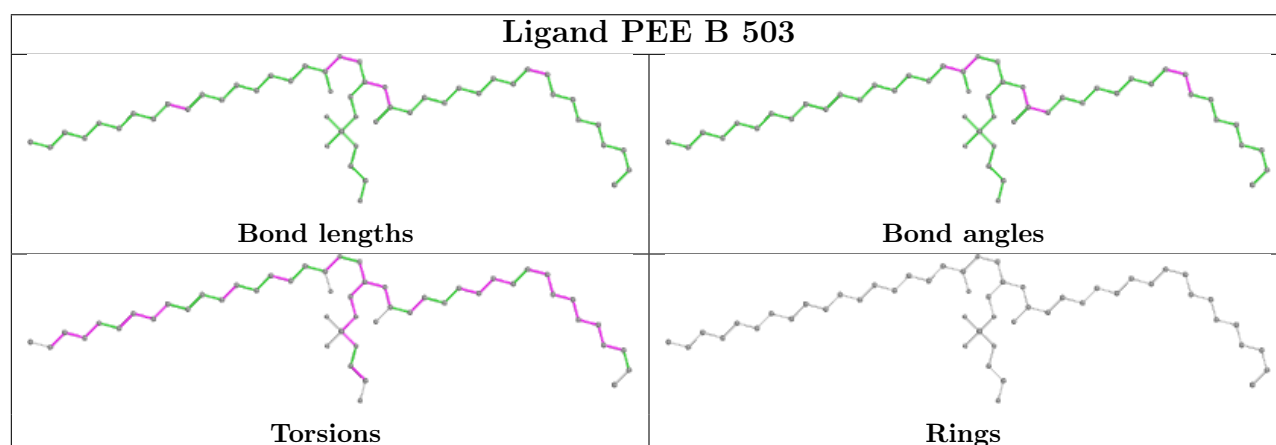
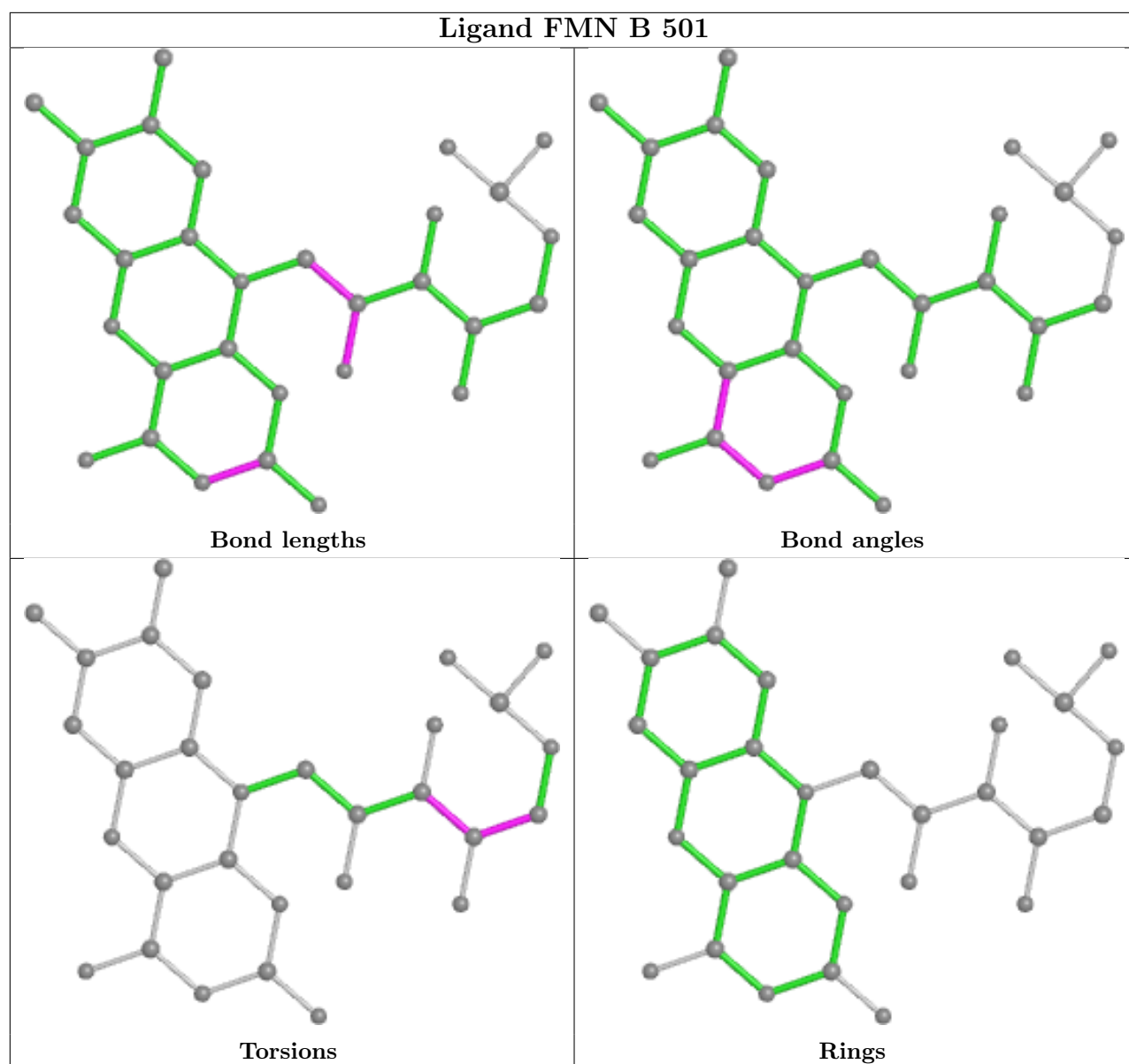












5.7 Other polymers [i](#)

There are no such residues in this entry.

5.8 Polymer linkage issues [i](#)

There are no chain breaks in this entry.

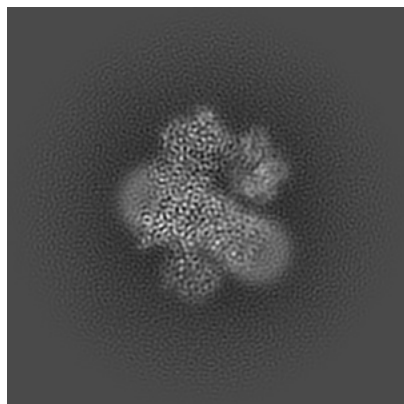
6 Map visualisation [i](#)

This section contains visualisations of the EMDB entry EMD-33244. These allow visual inspection of the internal detail of the map and identification of artifacts.

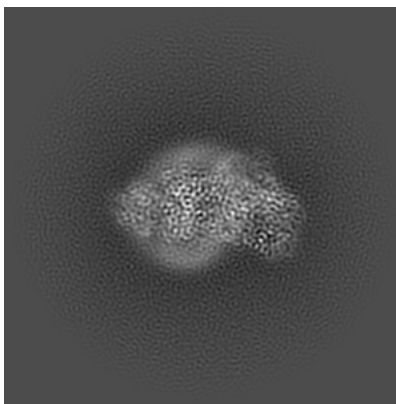
Images derived from a raw map, generated by summing the deposited half-maps, are presented below the corresponding image components of the primary map to allow further visual inspection and comparison with those of the primary map.

6.1 Orthogonal projections [i](#)

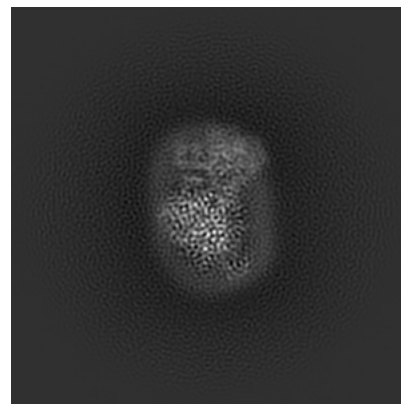
6.1.1 Primary map



X

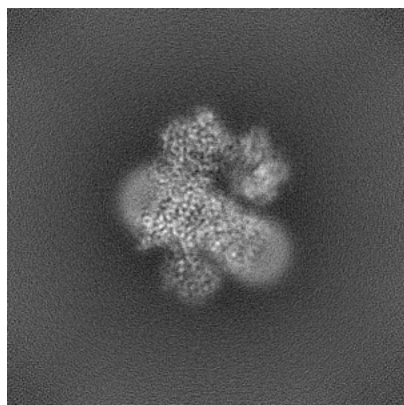


Y

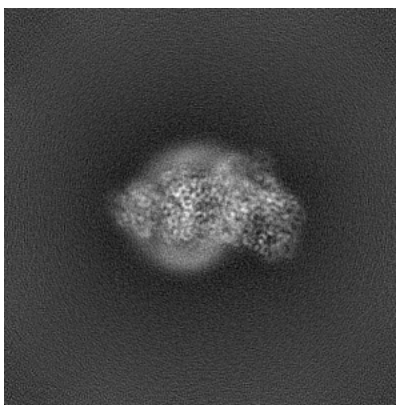


Z

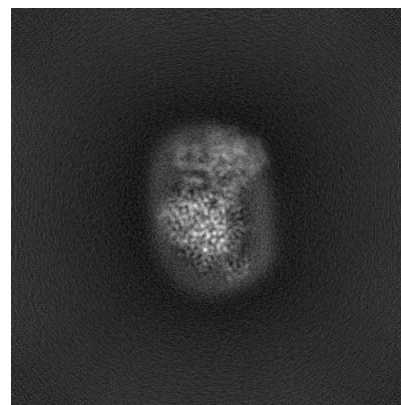
6.1.2 Raw map



X



Y

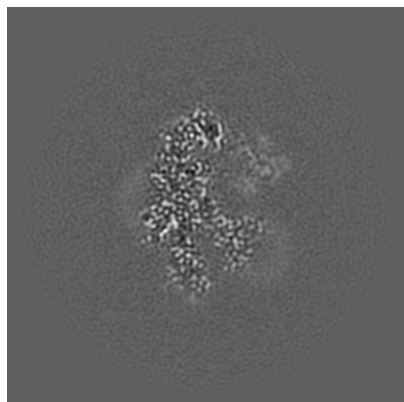


Z

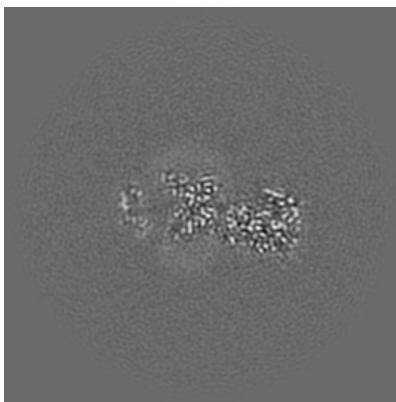
The images above show the map projected in three orthogonal directions.

6.2 Central slices [i](#)

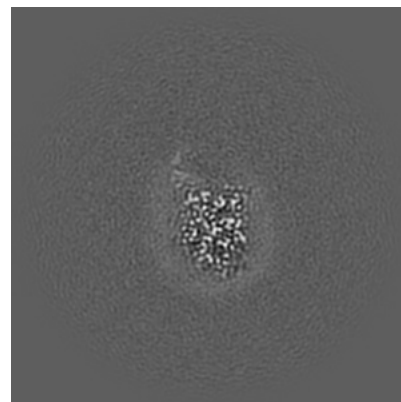
6.2.1 Primary map



X Index: 160

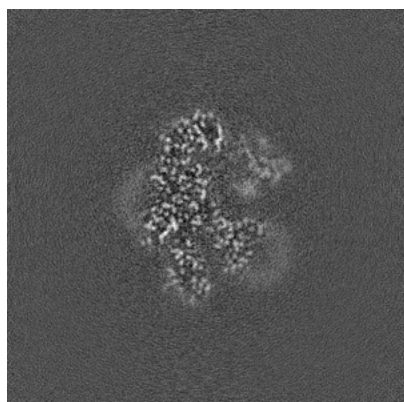


Y Index: 160

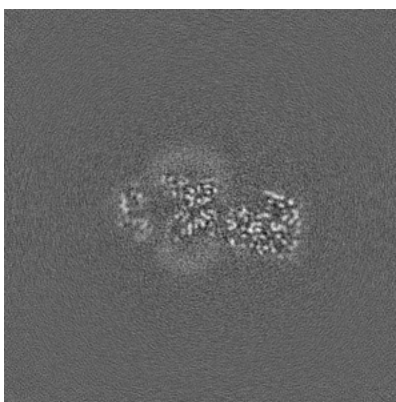


Z Index: 160

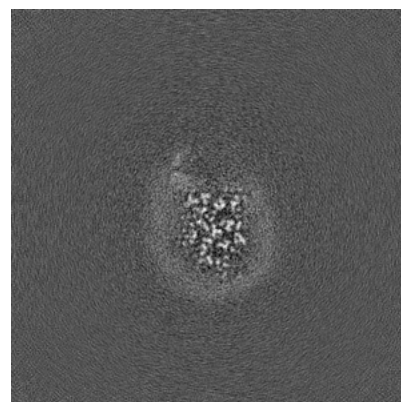
6.2.2 Raw map



X Index: 160



Y Index: 160

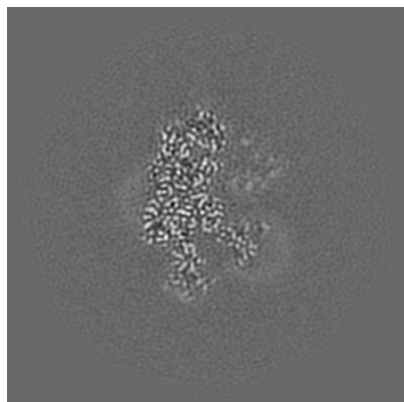


Z Index: 160

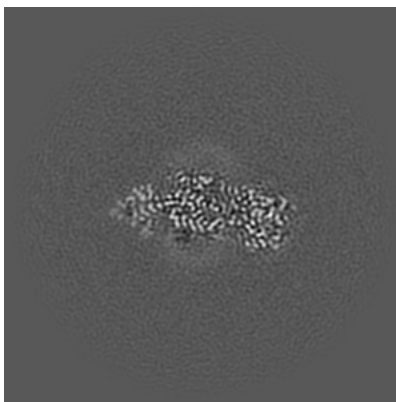
The images above show central slices of the map in three orthogonal directions.

6.3 Largest variance slices [i](#)

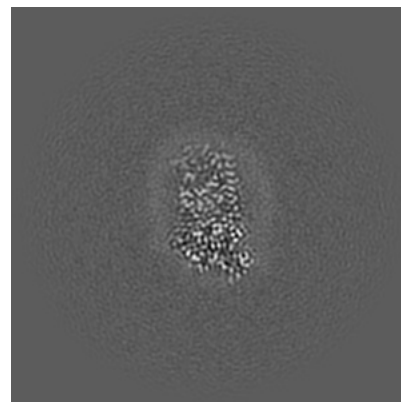
6.3.1 Primary map



X Index: 156

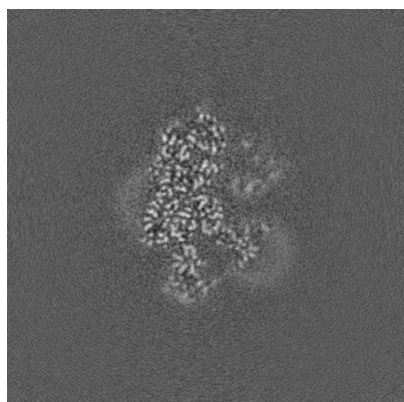


Y Index: 139

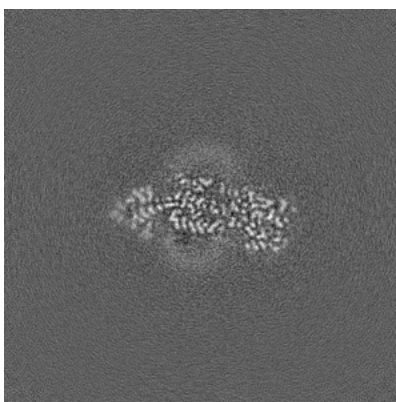


Z Index: 143

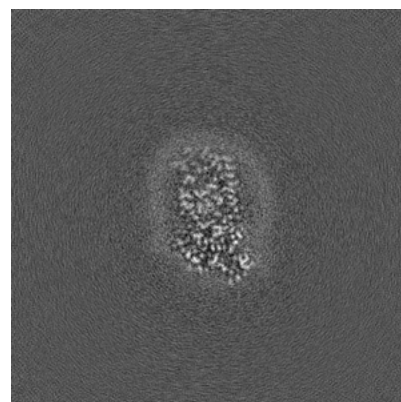
6.3.2 Raw map



X Index: 156



Y Index: 139

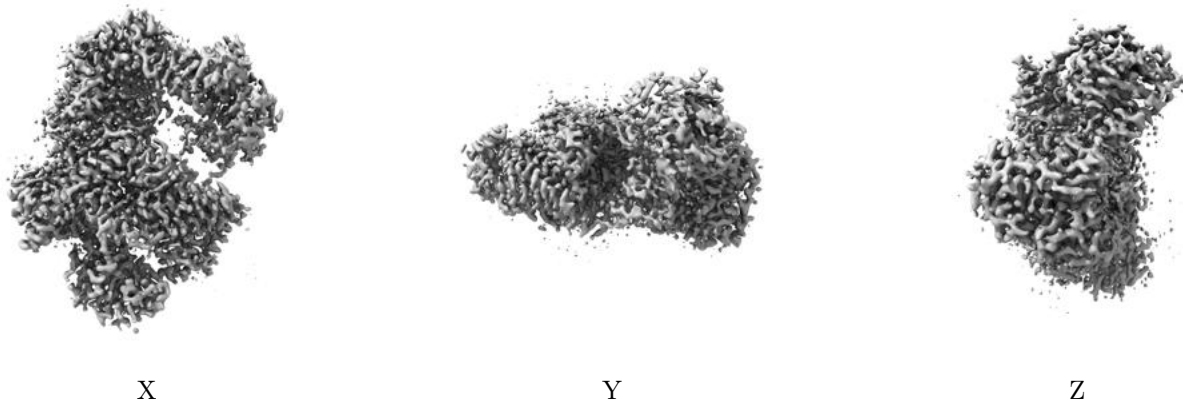


Z Index: 143

The images above show the largest variance slices of the map in three orthogonal directions.

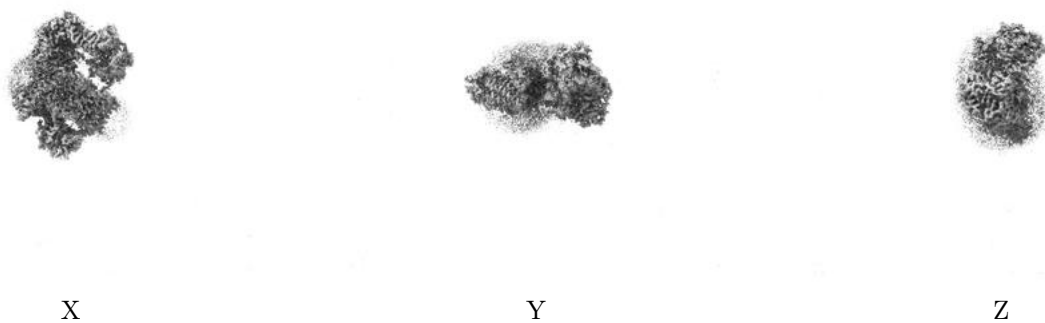
6.4 Orthogonal surface views [i](#)

6.4.1 Primary map



The images above show the 3D surface view of the map at the recommended contour level 0.5. These images, in conjunction with the slice images, may facilitate assessment of whether an appropriate contour level has been provided.

6.4.2 Raw map



These images show the 3D surface of the raw map. The raw map's contour level was selected so that its surface encloses the same volume as the primary map does at its recommended contour level.

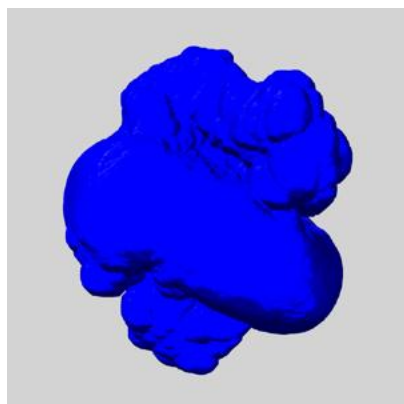
6.5 Mask visualisation [i](#)

This section shows the 3D surface view of the primary map at 50% transparency overlaid with the specified mask at 0% transparency

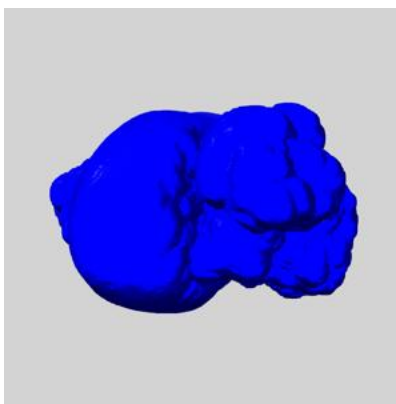
A mask typically either:

- Encompasses the whole structure
- Separates out a domain, a functional unit, a monomer or an area of interest from a larger structure

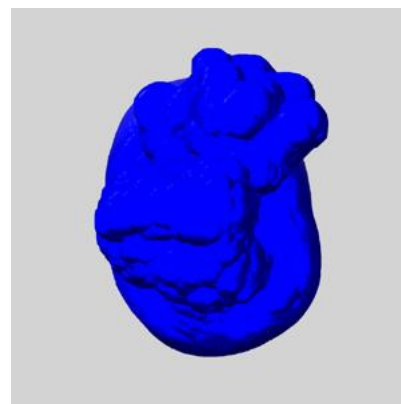
6.5.1 emd_33244_msk_1.map [i](#)



X



Y

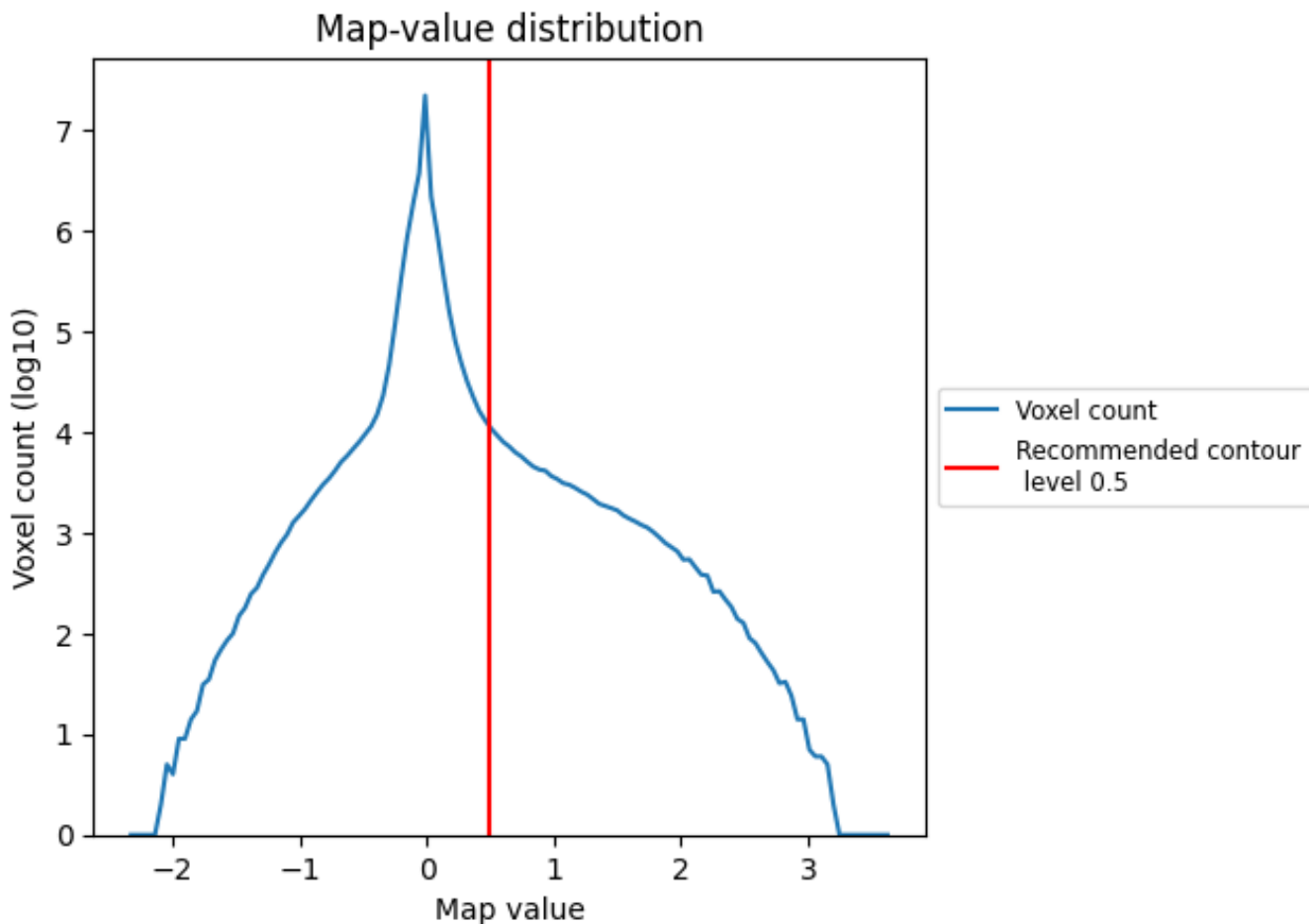


Z

7 Map analysis [i](#)

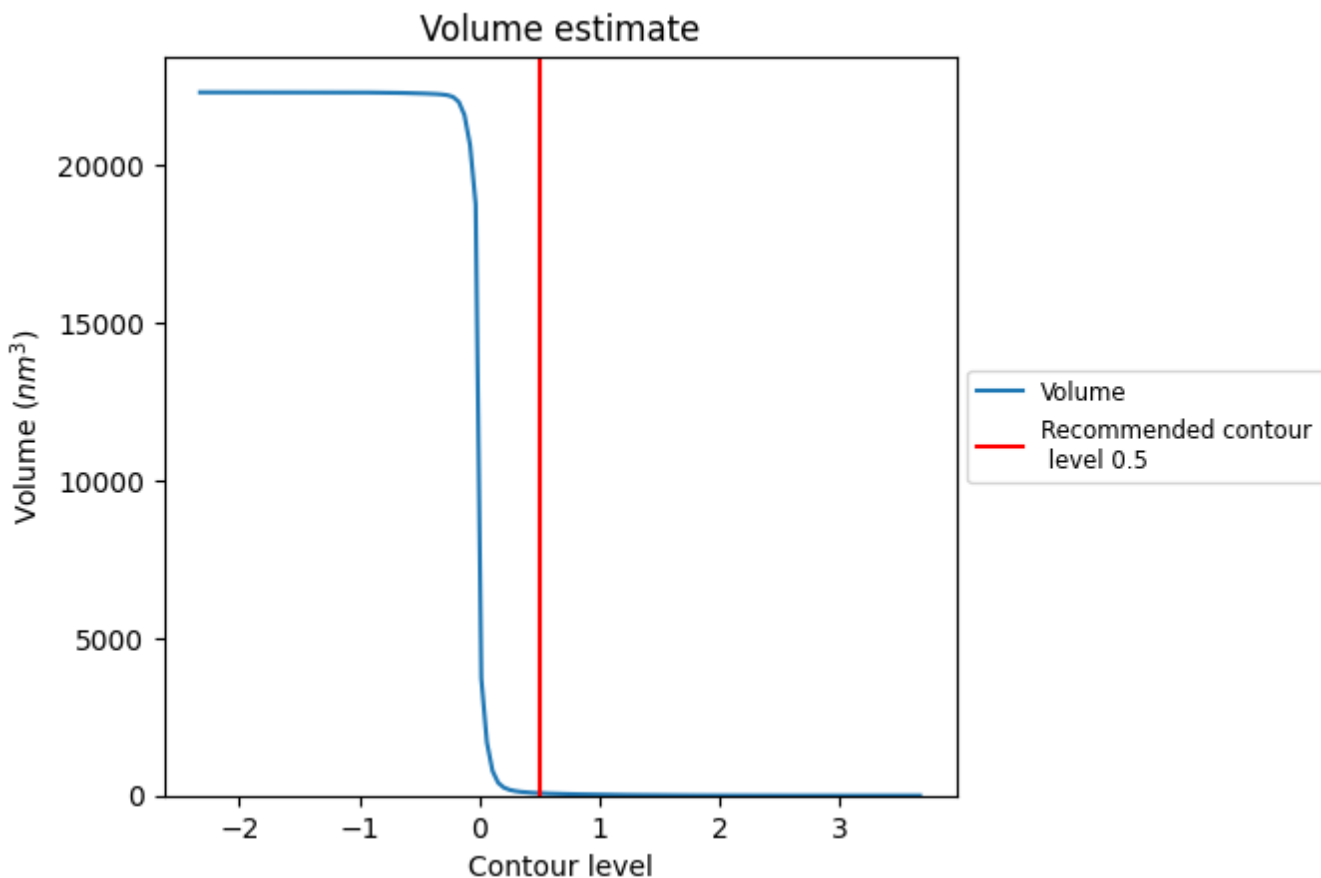
This section contains the results of statistical analysis of the map.

7.1 Map-value distribution [i](#)



The map-value distribution is plotted in 128 intervals along the x-axis. The y-axis is logarithmic. A spike in this graph at zero usually indicates that the volume has been masked.

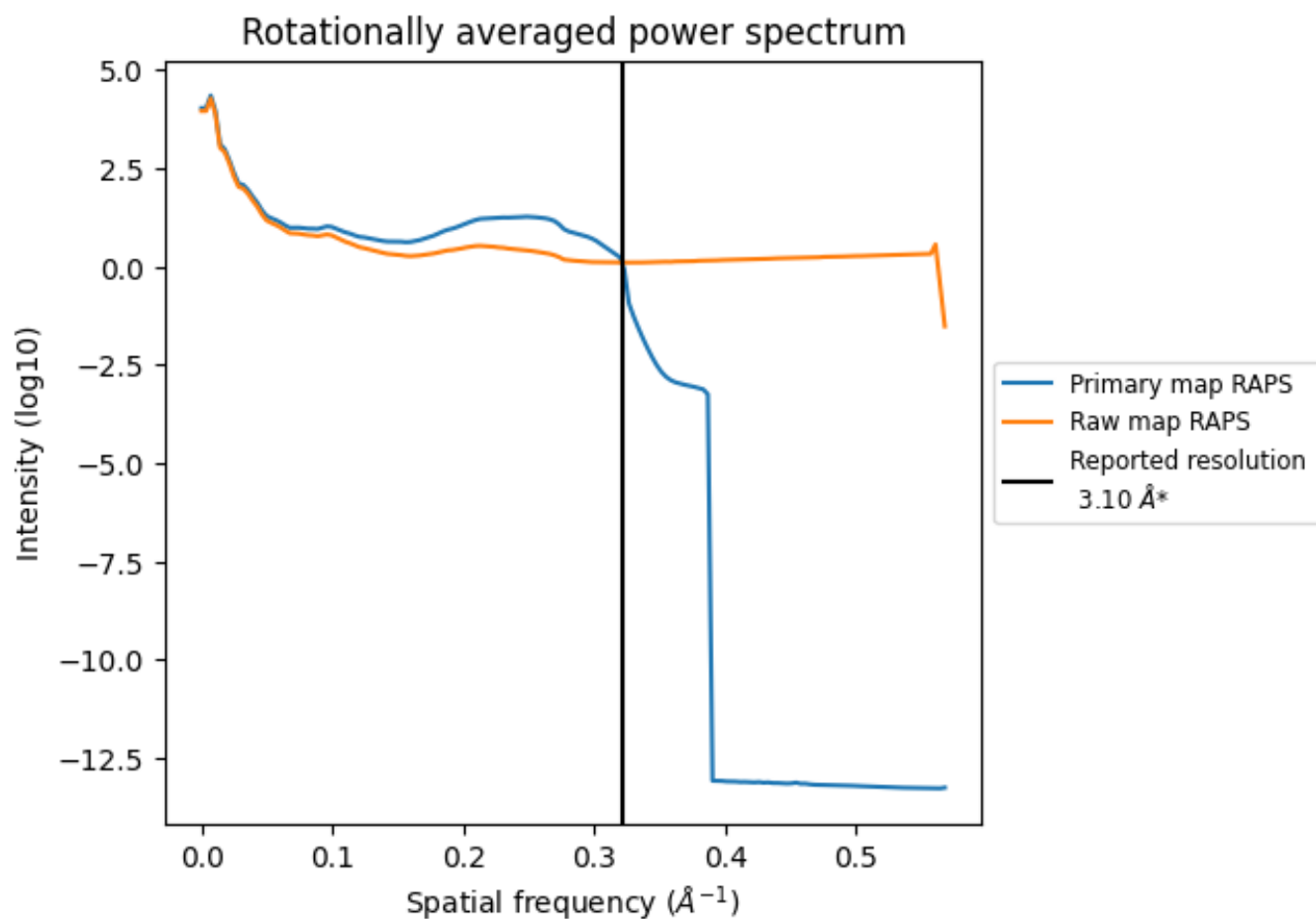
7.2 Volume estimate [i](#)



The volume at the recommended contour level is 76 nm³; this corresponds to an approximate mass of 69 kDa.

The volume estimate graph shows how the enclosed volume varies with the contour level. The recommended contour level is shown as a vertical line and the intersection between the line and the curve gives the volume of the enclosed surface at the given level.

7.3 Rotationally averaged power spectrum [i](#)

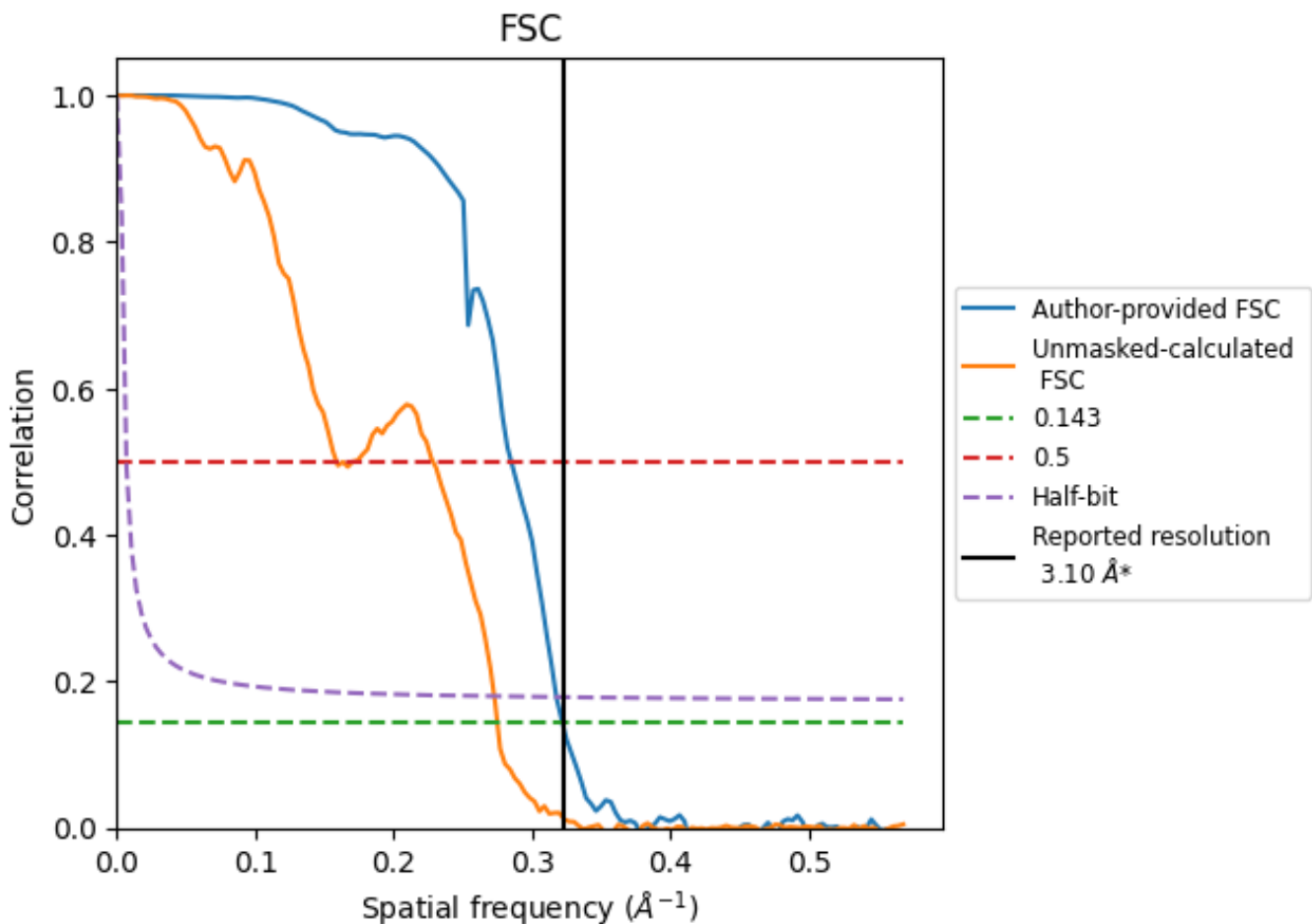


*Reported resolution corresponds to spatial frequency of 0.323 Å⁻¹

8 Fourier-Shell correlation [i](#)

Fourier-Shell Correlation (FSC) is the most commonly used method to estimate the resolution of single-particle and subtomogram-averaged maps. The shape of the curve depends on the imposed symmetry, mask and whether or not the two 3D reconstructions used were processed from a common reference. The reported resolution is shown as a black line. A curve is displayed for the half-bit criterion in addition to lines showing the 0.143 gold standard cut-off and 0.5 cut-off.

8.1 FSC [i](#)



*Reported resolution corresponds to spatial frequency of 0.323 Å⁻¹

8.2 Resolution estimates [i](#)

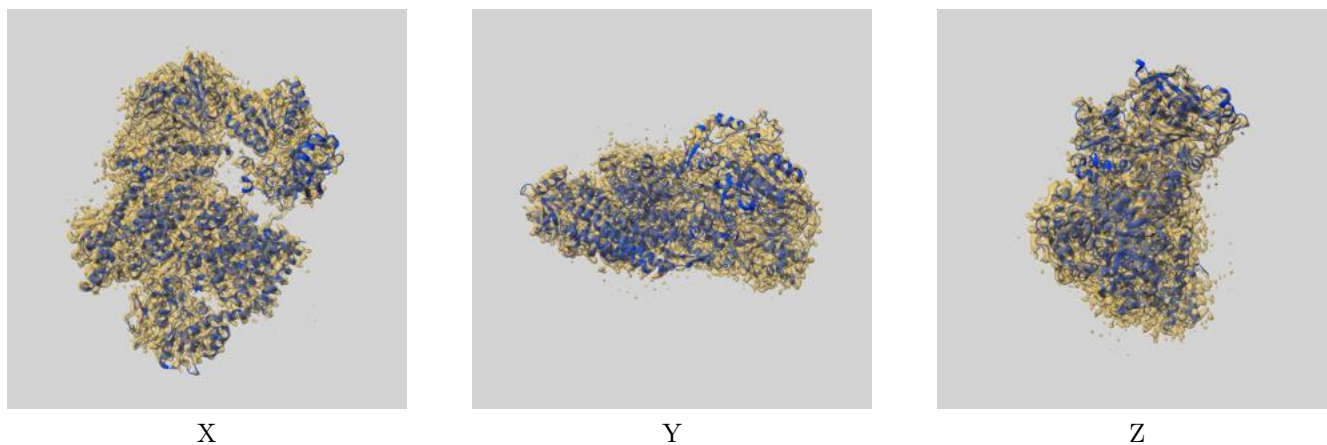
Resolution estimate (Å)	Estimation criterion (FSC cut-off)		
	0.143	0.5	Half-bit
Reported by author	3.10	-	-
Author-provided FSC curve	3.11	3.51	3.15
Unmasked-calculated*	3.64	6.30	3.67

*Resolution estimate based on FSC curve calculated by comparison of deposited half-maps. The value from deposited half-maps intersecting FSC 0.143 CUT-OFF 3.64 differs from the reported value 3.1 by more than 10 %

9 Map-model fit [i](#)

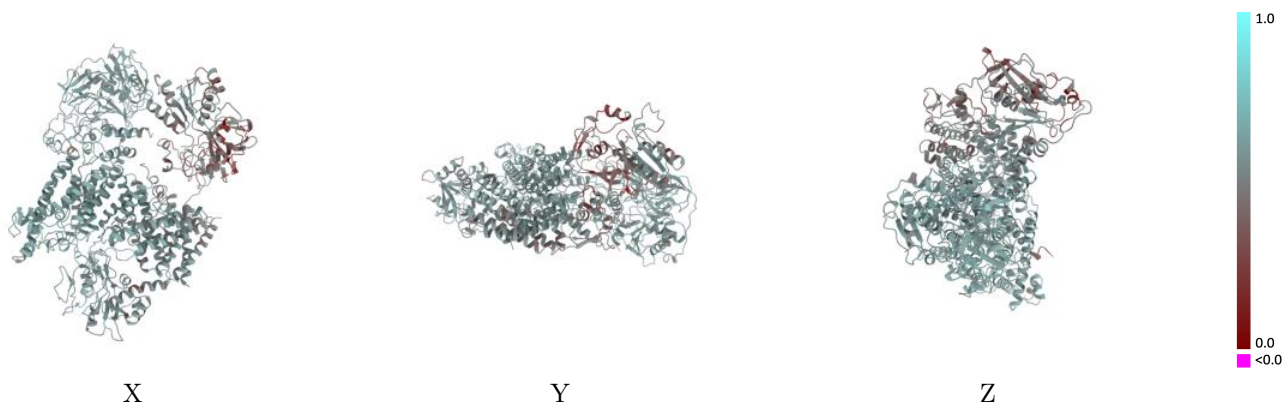
This section contains information regarding the fit between EMDB map EMD-33244 and PDB model 7XK5. Per-residue inclusion information can be found in section 3 on page 8.

9.1 Map-model overlay [i](#)



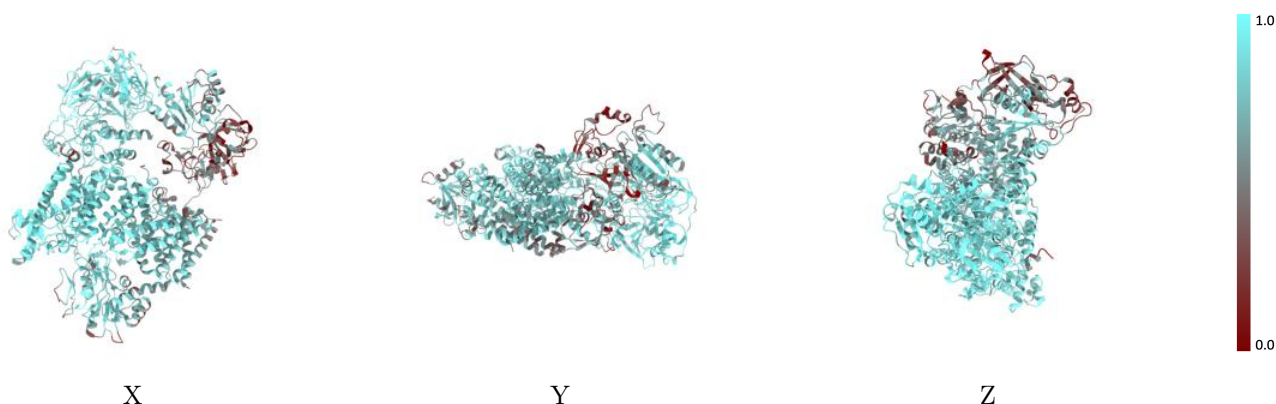
The images above show the 3D surface view of the map at the recommended contour level 0.5 at 50% transparency in yellow overlaid with a ribbon representation of the model coloured in blue. These images allow for the visual assessment of the quality of fit between the atomic model and the map.

9.2 Q-score mapped to coordinate model [i](#)



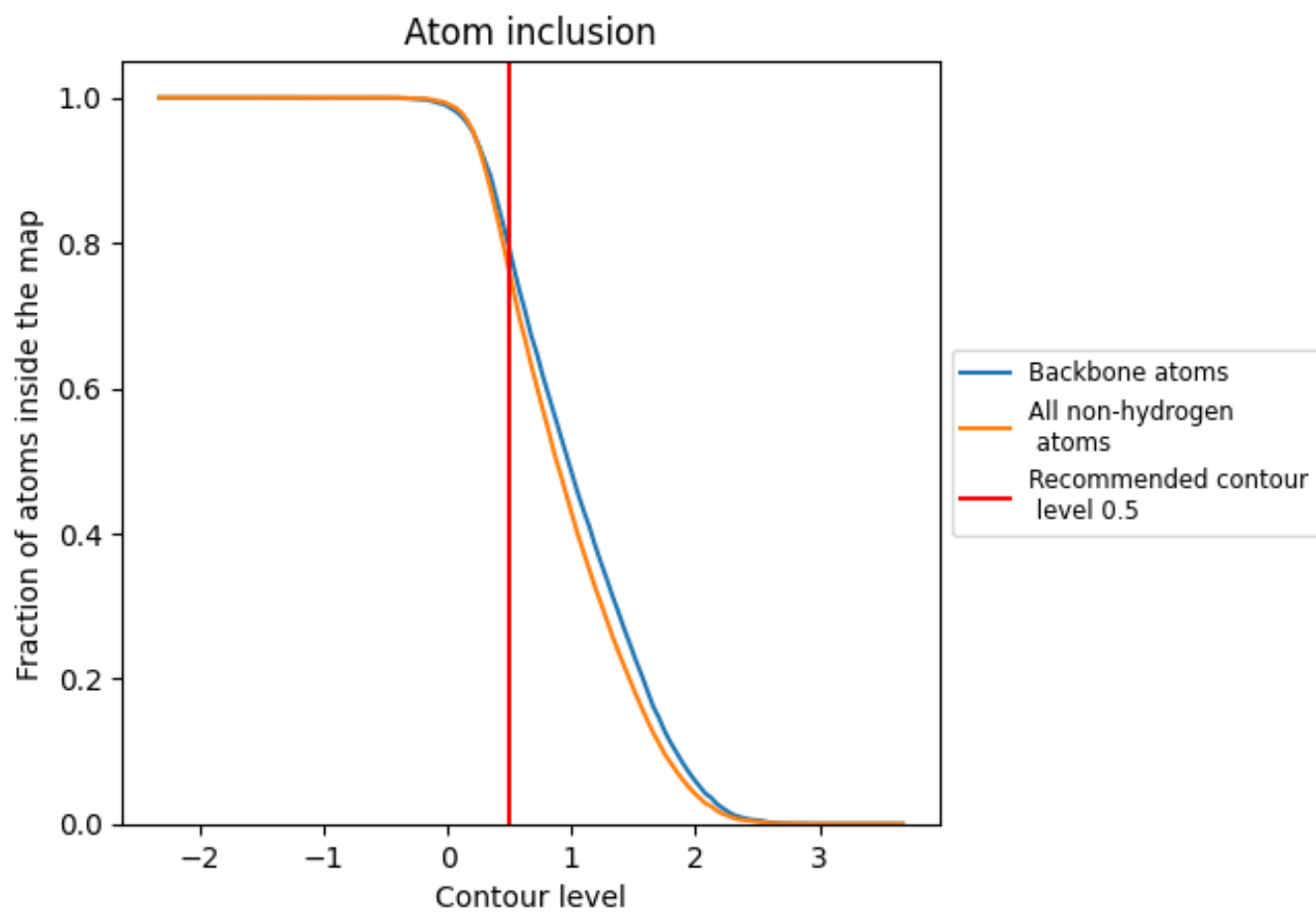
The images above show the model with each residue coloured according to its Q-score. This shows their resolvability in the map with higher Q-score values reflecting better resolvability. Please note: Q-score is calculating the resolvability of atoms, and thus high values are only expected at resolutions at which atoms can be resolved. Low Q-score values may therefore be expected for many entries.

9.3 Atom inclusion mapped to coordinate model [i](#)



The images above show the model with each residue coloured according to its atom inclusion. This shows to what extent they are inside the map at the recommended contour level (0.5).



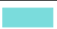











9.4 Atom inclusion [i](#)



At the recommended contour level, 79% of all backbone atoms, 76% of all non-hydrogen atoms, are inside the map.

9.5 Map-model fit summary [i](#)

The table lists the average atom inclusion at the recommended contour level (0.5) and Q-score for the entire model and for each chain.

Chain	Atom inclusion	Q-score
All	 0.7586	 0.5460
A	 0.8662	 0.5810
B	 0.8825	 0.5940
C	 0.7271	 0.5500
D	 0.7981	 0.5630
E	 0.7809	 0.5610
F	 0.5112	 0.4420

