



# Full wwPDB X-ray Structure Validation Report ⓘ

Jun 25, 2024 – 03:12 PM EDT

PDB ID : 5XMH  
Title : Crystal structure of an IgM rheumatoid factor YES8c in complex with IgG1 Fc  
Authors : Shiroishi, M.; Shimokawa, K.; Lee, J.M.; Kusakabe, M.; Ueda, T.  
Deposited on : 2017-05-15  
Resolution : 2.80 Å(reported)

This is a Full wwPDB X-ray Structure Validation Report for a publicly released PDB entry.

We welcome your comments at [validation@mail.wwpdb.org](mailto:validation@mail.wwpdb.org)

A user guide is available at

<https://www.wwpdb.org/validation/2017/XrayValidationReportHelp>

with specific help available everywhere you see the ⓘ symbol.

The types of validation reports are described at

<http://www.wwpdb.org/validation/2017/FAQs#types>.

---

The following versions of software and data (see [references ⓘ](#)) were used in the production of this report:

MolProbity : 4.02b-467  
Mogul : 1.8.5 (274361), CSD as541be (2020)  
Xtriage (Phenix) : 1.13  
EDS : 2.37.1  
Percentile statistics : 20191225.v01 (using entries in the PDB archive December 25th 2019)  
Refmac : 5.8.0158  
CCP4 : 7.0.044 (Gargrove)  
Ideal geometry (proteins) : Engh & Huber (2001)  
Ideal geometry (DNA, RNA) : Parkinson et al. (1996)  
Validation Pipeline (wwPDB-VP) : 2.37.1

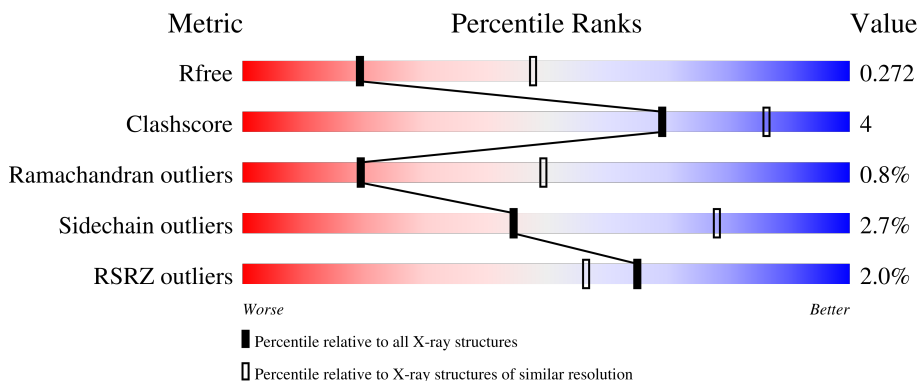
# 1 Overall quality at a glance

The following experimental techniques were used to determine the structure:

*X-RAY DIFFRACTION*

The reported resolution of this entry is 2.80 Å.

Percentile scores (ranging between 0-100) for global validation metrics of the entry are shown in the following graphic. The table shows the number of entries on which the scores are based.



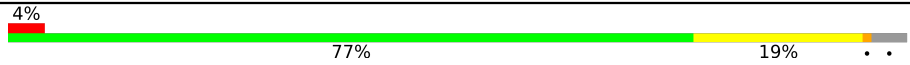


Metric	Whole archive (#Entries)	Similar resolution (#Entries, resolution range(Å))
$R_{free}$	130704	3140 (2.80-2.80)
Clashscore	141614	3569 (2.80-2.80)
Ramachandran outliers	138981	3498 (2.80-2.80)
Sidechain outliers	138945	3500 (2.80-2.80)
RSRZ outliers	127900	3078 (2.80-2.80)

The table below summarises the geometric issues observed across the polymeric chains and their fit to the electron density. The red, orange, yellow and green segments of the lower bar indicate the fraction of residues that contain outliers for  $\geq 3$ , 2, 1 and 0 types of geometric quality criteria respectively. A grey segment represents the fraction of residues that are not modelled. The numeric value for each fraction is indicated below the corresponding segment, with a dot representing fractions  $\leq 5\%$ . The upper red bar (where present) indicates the fraction of residues that have poor fit to the electron density. The numeric value is given above the bar.

Mol	Chain	Length	Quality of chain
1	A	208	
1	B	208	
2	C	216	
2	L	216	
3	D	226	

*Continued on next page...*

*Continued from previous page...*

Mol	Chain	Length	Quality of chain
3	H	226	 <p>4% 77% 19% . .</p>
4	E	8	 <p>50% 38% 12%</p>
5	F	6	 <p>33% 67%</p>

## 2 Entry composition [i](#)

There are 6 unique types of molecules in this entry. The entry contains 8222 atoms, of which 0 are hydrogens and 0 are deuteriums.

In the tables below, the ZeroOcc column contains the number of atoms modelled with zero occupancy, the AltConf column contains the number of residues with at least one atom in alternate conformation and the Trace column contains the number of residues modelled with at most 2 atoms.

- Molecule 1 is a protein called Immunoglobulin gamma-1 heavy chain.

Mol	Chain	Residues	Atoms					ZeroOcc	AltConf	Trace
			Total	C	N	O	S			
1	A	208	Total 1619	C 1031	N 271	O 311	S 6	0	0	0
1	B	207	Total 1547	C 987	N 258	O 296	S 6	0	0	0

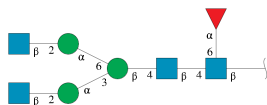
- Molecule 2 is a protein called YES8c light chain.

Mol	Chain	Residues	Atoms					ZeroOcc	AltConf	Trace
			Total	C	N	O	S			
2	L	214	Total 1606	C 1005	N 268	O 329	S 4	0	0	0
2	C	107	Total 791	C 498	N 131	O 160	S 2	0	0	0

- Molecule 3 is a protein called YES8c heavy chain.

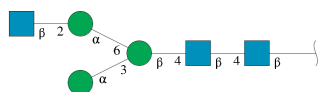
Mol	Chain	Residues	Atoms					ZeroOcc	AltConf	Trace
			Total	C	N	O	S			
3	H	217	Total 1538	C 981	N 252	O 300	S 5	0	0	0
3	D	123	Total 883	C 565	N 144	O 171	S 3	0	0	0

- Molecule 4 is an oligosaccharide called 2-acetamido-2-deoxy-beta-D-glucopyranose-(1-2)-alpha-D-mannopyranose-(1-3)-[2-acetamido-2-deoxy-beta-D-glucopyranose-(1-2)-alpha-D-mannopyranose-(1-6)]beta-D-mannopyranose-(1-4)-2-acetamido-2-deoxy-beta-D-glucopyranose-(1-4)-[alpha-L-fucopyranose-(1-6)]2-acetamido-2-deoxy-beta-D-glucopyranose.



Mol	Chain	Residues	Atoms				ZeroOcc	AltConf	Trace
			Total	C	N	O			
4	E	8	99	56	4	39	0	0	0

- Molecule 5 is an oligosaccharide called 2-acetamido-2-deoxy-beta-D-glucopyranose-(1-2)-alpha-D-mannopyranose-(1-6)-[alpha-D-mannopyranose-(1-3)]beta-D-mannopyranose-(1-4)-2-acetamido-2-deoxy-beta-D-glucopyranose-(1-4)-2-acetamido-2-deoxy-beta-D-glucopyranose.



Mol	Chain	Residues	Atoms				ZeroOcc	AltConf	Trace
			Total	C	N	O			
5	F	6	75	42	3	30	0	0	0

- Molecule 6 is water.

Mol	Chain	Residues	Atoms		ZeroOcc	AltConf
6	A	19	Total	O	0	0
			19	19		
6	B	9	Total	O	0	0
			9	9		
6	L	18	Total	O	0	0
			18	18		
6	H	13	Total	O	0	0
			13	13		
6	D	2	Total	O	0	0
			2	2		
6	C	3	Total	O	0	0
			3	3		





## 4 Data and refinement statistics i

Property	Value	Source
Space group	P 65	Depositor
Cell constants a, b, c, $\alpha$ , $\beta$ , $\gamma$	189.90Å 189.90Å 79.60Å 90.00° 90.00° 120.00°	Depositor
Resolution (Å)	19.90 – 2.80 19.90 – 2.80	Depositor EDS
% Data completeness (in resolution range)	99.5 (19.90-2.80) 99.5 (19.90-2.80)	Depositor EDS
$R_{merge}$	0.07	Depositor
$R_{sym}$	(Not available)	Depositor
$\langle I/\sigma(I) \rangle$ <sup>1</sup>	3.45 (at 2.79Å)	Xtrriage
Refinement program	PHENIX 1.10.1_2155	Depositor
R, $R_{free}$	0.220 , 0.272 0.222 , 0.272	Depositor DCC
$R_{free}$ test set	2038 reflections (5.08%)	wwPDB-VP
Wilson B-factor (Å <sup>2</sup> )	54.7	Xtrriage
Anisotropy	0.425	Xtrriage
Bulk solvent $k_{sol}$ (e/Å <sup>3</sup> ), $B_{sol}$ (Å <sup>2</sup> )	0.31 , 31.9	EDS
L-test for twinning <sup>2</sup>	$\langle  L  \rangle = 0.49$ , $\langle L^2 \rangle = 0.32$	Xtrriage
Estimated twinning fraction	0.029 for h,-h-k,-l	Xtrriage
$F_o, F_c$ correlation	0.91	EDS
Total number of atoms	8222	wwPDB-VP
Average B, all atoms (Å <sup>2</sup> )	52.0	wwPDB-VP

Xtrriage's analysis on translational NCS is as follows: *The largest off-origin peak in the Patterson function is 2.03% of the height of the origin peak. No significant pseudotranslation is detected.*

<sup>1</sup>Intensities estimated from amplitudes.

<sup>2</sup>Theoretical values of  $\langle |L| \rangle$ ,  $\langle L^2 \rangle$  for acentric reflections are 0.5, 0.333 respectively for untwinned datasets, and 0.375, 0.2 for perfectly twinned datasets.



## 5 Model quality [i](#)

### 5.1 Standard geometry [i](#)

Bond lengths and bond angles in the following residue types are not validated in this section: NAG, BMA, FUC, MAN

The Z score for a bond length (or angle) is the number of standard deviations the observed value is removed from the expected value. A bond length (or angle) with  $|Z| > 5$  is considered an outlier worth inspection. RMSZ is the root-mean-square of all Z scores of the bond lengths (or angles).

Mol	Chain	Bond lengths		Bond angles	
		RMSZ	# Z  >5	RMSZ	# Z  >5
1	A	0.25	0/1665	0.44	0/2280
1	B	0.25	0/1591	0.44	0/2186
2	C	0.26	0/810	0.46	0/1103
2	L	0.26	0/1642	0.46	0/2239
3	D	0.25	0/905	0.47	0/1233
3	H	0.27	0/1578	0.49	0/2165
All	All	0.26	0/8191	0.46	0/11206

There are no bond length outliers.

There are no bond angle outliers.

There are no chirality outliers.

There are no planarity outliers.

### 5.2 Too-close contacts [i](#)

In the following table, the Non-H and H(model) columns list the number of non-hydrogen atoms and hydrogen atoms in the chain respectively. The H(added) column lists the number of hydrogen atoms added and optimized by MolProbity. The Clashes column lists the number of clashes within the asymmetric unit, whereas Symm-Clashes lists symmetry-related clashes.

Mol	Chain	Non-H	H(model)	H(added)	Clashes	Symm-Clashes
1	A	1619	0	1526	9	0
1	B	1547	0	1392	10	0
2	C	791	0	732	6	0
2	L	1606	0	1496	9	0
3	D	883	0	799	10	0
3	H	1538	0	1412	21	0
4	E	99	0	85	1	0

*Continued on next page...*

*Continued from previous page...*

Mol	Chain	Non-H	H(model)	H(added)	Clashes	Symm-Clashes
5	F	75	0	64	0	0
6	A	19	0	0	0	0
6	B	9	0	0	0	0
6	C	3	0	0	0	0
6	D	2	0	0	0	0
6	H	13	0	0	1	0
6	L	18	0	0	0	0
All	All	8222	0	7506	58	0

The all-atom clashscore is defined as the number of clashes found per 1000 atoms (including hydrogen atoms). The all-atom clashscore for this structure is 4.

All (58) close contacts within the same asymmetric unit are listed below, sorted by their clash magnitude.

Atom-1	Atom-2	Interatomic distance (Å)	Clash overlap (Å)
2:L:108:ARG:NH1	2:L:109:THR:O	2.21	0.74
1:A:272:GLU:O	1:A:325:ASN:ND2	2.22	0.71
3:H:126:PRO:HG3	3:H:138:LEU:HB3	1.73	0.71
2:L:189:HIS:O	2:L:211:ARG:NH1	2.27	0.68
3:H:94:ARG:HB2	3:H:95:GLY:HA3	1.79	0.64
2:L:164:THR:HG22	2:L:174:SER:H	1.62	0.62
1:B:346:PRO:HB3	1:B:372:PHE:HB3	1.82	0.62
3:H:67:VAL:HG22	3:H:82:VAL:HG22	1.83	0.60
1:A:295:GLN:HG2	4:E:1:NAG:H62	1.83	0.60
2:C:37:GLN:HB2	2:C:47:LEU:HD11	1.85	0.58
3:D:94:ARG:O	3:D:101:PHE:N	2.37	0.58
1:A:351:LEU:HB2	1:A:366:THR:HB	1.85	0.58
1:B:418:GLN:HA	1:B:443:LEU:HD22	1.84	0.57
1:B:436:TYR:CE1	3:D:100(B):PRO:HG3	2.40	0.57
3:H:115:SER:O	3:H:117:LYS:N	2.40	0.55
3:H:94:ARG:O	3:H:102:TYR:N	2.36	0.54
3:H:33:PRO:HB3	3:H:52:ILE:HG12	1.91	0.52
3:H:203:SER:HG	3:H:205:THR:HG1	1.51	0.51
3:H:59:TYR:HB2	3:H:64:GLN:HG2	1.94	0.50
3:D:52:ILE:HD13	3:D:99:ALA:HB1	1.95	0.49
3:D:87:THR:HG23	3:D:110:THR:HA	1.93	0.49
2:L:54:ARG:HG2	2:L:58:ILE:HB	1.95	0.49
3:H:83:ARG:NH2	6:H:303:HOH:O	2.38	0.49
3:D:30:SER:HA	3:D:52(A):PRO:HG2	1.94	0.49
3:D:35:SER:HB3	3:D:47:TRP:HE1	1.78	0.48
1:A:434:ASN:HA	3:H:52:ILE:HD11	1.95	0.48

*Continued on next page...*

Continued from previous page...

Atom-1	Atom-2	Interatomic distance (Å)	Clash overlap (Å)
3:D:100(B):PRO:HG2	2:C:32:TYR:CZ	2.49	0.48
1:A:368:LEU:HD13	1:A:407:TYR:CZ	2.48	0.47
1:A:346:PRO:HB3	1:A:372:PHE:HB3	1.96	0.47
1:B:368:LEU:HD13	1:B:407:TYR:CZ	2.51	0.46
1:B:367:CYS:HB2	1:B:381:TRP:CZ2	2.51	0.46
1:A:438:GLN:O	2:L:93:SER:HB3	2.16	0.45
3:H:87:THR:HG23	3:H:110:THR:HA	1.97	0.45
1:B:248:LYS:NZ	1:B:380:GLU:OE2	2.40	0.45
1:B:422:VAL:HG21	2:C:68:GLY:HA2	1.97	0.45
1:A:394:THR:HA	1:B:397:VAL:HG21	1.99	0.45
1:A:370:LYS:HB2	1:A:370:LYS:HE3	1.84	0.44
3:H:96:ILE:N	3:H:100(C):ASP:OD1	2.48	0.44
2:L:140:TYR:CG	2:L:141:PRO:HA	2.52	0.44
3:H:119:PRO:HD2	3:H:205:THR:HG21	1.99	0.44
3:D:52(A):PRO:HB3	3:D:71:ALA:HB1	2.00	0.44
3:H:146:PHE:HA	3:H:147:PRO:HA	1.75	0.43
3:H:52:ILE:HD13	3:H:99:ALA:HB1	1.99	0.43
3:H:200:HIS:CE1	3:H:202:PRO:HD2	2.54	0.42
2:L:113:PRO:HB3	2:L:139:PHE:HB3	2.01	0.42
3:H:172:SER:HA	3:H:173:SER:HA	1.48	0.42
1:B:434:ASN:HA	3:D:52:ILE:HD11	2.02	0.42
2:L:108:ARG:HG3	2:L:109:THR:O	2.19	0.42
3:D:96:ILE:N	3:D:100(C):ASP:OD1	2.46	0.42
2:L:37:GLN:HB2	2:L:47:LEU:HD11	2.00	0.42
3:H:84:SER:HA	3:H:111:VAL:HB	2.02	0.42
1:B:297:ASN:OD1	1:B:299:THR:N	2.53	0.41
2:C:1:GLU:OE2	2:C:1:GLU:N	2.48	0.41
3:H:138:LEU:HG	3:H:182:VAL:HG23	2.02	0.41
3:H:147:PRO:HD2	3:H:202:PRO:HG2	2.03	0.41
3:H:170:LEU:HD13	3:H:176:TYR:CZ	2.56	0.40
2:C:59:PRO:HB2	2:C:61:ARG:HG2	2.03	0.40
2:C:16:GLY:N	2:C:78:LEU:O	2.49	0.40

There are no symmetry-related clashes.

## 5.3 Torsion angles [i](#)

### 5.3.1 Protein backbone [i](#)

In the following table, the Percentiles column shows the percent Ramachandran outliers of the chain as a percentile score with respect to all X-ray entries followed by that with respect to entries

of similar resolution.

The Analysed column shows the number of residues for which the backbone conformation was analysed, and the total number of residues.

Mol	Chain	Analysed	Favoured	Allowed	Outliers	Percentiles	
1	A	206/208 (99%)	198 (96%)	7 (3%)	1 (0%)	29	61
1	B	205/208 (99%)	199 (97%)	5 (2%)	1 (0%)	29	61
2	C	105/216 (49%)	102 (97%)	3 (3%)	0	100	100
2	L	212/216 (98%)	203 (96%)	9 (4%)	0	100	100
3	D	121/226 (54%)	113 (93%)	8 (7%)	0	100	100
3	H	213/226 (94%)	194 (91%)	13 (6%)	6 (3%)	5	17
All	All	1062/1300 (82%)	1009 (95%)	45 (4%)	8 (1%)	19	49

All (8) Ramachandran outliers are listed below:

Mol	Chain	Res	Type
3	H	116	THR
1	A	340	LYS
3	H	157	GLY
3	H	188	SER
3	H	203	SER
1	B	340	LYS
3	H	191	THR
3	H	149	PRO

### 5.3.2 Protein sidechains [i](#)

In the following table, the Percentiles column shows the percent sidechain outliers of the chain as a percentile score with respect to all X-ray entries followed by that with respect to entries of similar resolution.

The Analysed column shows the number of residues for which the sidechain conformation was analysed, and the total number of residues.

Mol	Chain	Analysed	Rotameric	Outliers	Percentiles	
1	A	180/194 (93%)	178 (99%)	2 (1%)	73	92
1	B	159/194 (82%)	155 (98%)	4 (2%)	47	80
2	C	82/187 (44%)	78 (95%)	4 (5%)	25	57
2	L	172/187 (92%)	168 (98%)	4 (2%)	50	82
3	D	82/187 (44%)	81 (99%)	1 (1%)	71	92

*Continued on next page...*

Continued from previous page...

Mol	Chain	Analysed	Rotameric	Outliers	Percentiles	
3	H	153/187 (82%)	146 (95%)	7 (5%)	27	60
All	All	828/1136 (73%)	806 (97%)	22 (3%)	44	78

All (22) residues with a non-rotameric sidechain are listed below:

Mol	Chain	Res	Type
1	A	311	GLN
1	A	363	VAL
1	B	266	VAL
1	B	286	ASN
1	B	295	GLN
1	B	363	VAL
2	L	33	LEU
2	L	85	VAL
2	L	94	SER
2	L	105	GLU
3	H	140	CYS
3	H	151	THR
3	H	153	SER
3	H	178	LEU
3	H	182	VAL
3	H	193	THR
3	H	196	CYS
3	D	75	THR
2	C	69	THR
2	C	85	VAL
2	C	97	THR
2	C	105	GLU

Sometimes sidechains can be flipped to improve hydrogen bonding and reduce clashes. All (1) such sidechains are listed below:

Mol	Chain	Res	Type
1	A	325	ASN

### 5.3.3 RNA [i](#)

There are no RNA molecules in this entry.

## 5.4 Non-standard residues in protein, DNA, RNA chains [i](#)

There are no non-standard protein/DNA/RNA residues in this entry.

## 5.5 Carbohydrates [i](#)

14 monosaccharides are modelled in this entry.

In the following table, the Counts columns list the number of bonds (or angles) for which Mogul statistics could be retrieved, the number of bonds (or angles) that are observed in the model and the number of bonds (or angles) that are defined in the Chemical Component Dictionary. The Link column lists molecule types, if any, to which the group is linked. The Z score for a bond length (or angle) is the number of standard deviations the observed value is removed from the expected value. A bond length (or angle) with  $|Z| > 2$  is considered an outlier worth inspection. RMSZ is the root-mean-square of all Z scores of the bond lengths (or angles).

Mol	Type	Chain	Res	Link	Bond lengths			Bond angles		
					Counts	RMSZ	# Z  > 2	Counts	RMSZ	# Z  > 2
4	NAG	E	1	4,1	14,14,15	0.25	0	17,19,21	0.63	1 (5%)
4	NAG	E	2	4	14,14,15	0.41	0	17,19,21	0.41	0
4	BMA	E	3	4	11,11,12	0.93	0	15,15,17	1.01	1 (6%)
4	MAN	E	4	4	11,11,12	0.78	0	15,15,17	1.12	1 (6%)
4	NAG	E	5	4	14,14,15	0.18	0	17,19,21	0.44	0
4	MAN	E	6	4	11,11,12	0.65	0	15,15,17	1.01	2 (13%)
4	NAG	E	7	4	14,14,15	0.24	0	17,19,21	0.56	0
4	FUC	E	8	4	10,10,11	0.72	0	14,14,16	0.94	0
5	NAG	F	1	5,1	14,14,15	0.82	1 (7%)	17,19,21	0.95	1 (5%)
5	NAG	F	2	5	14,14,15	0.18	0	17,19,21	0.51	0
5	BMA	F	3	5	11,11,12	0.63	0	15,15,17	1.02	1 (6%)
5	MAN	F	4	5	11,11,12	0.70	0	15,15,17	1.08	2 (13%)
5	NAG	F	5	5	14,14,15	0.26	0	17,19,21	0.46	0
5	MAN	F	6	5	11,11,12	0.85	0	15,15,17	1.00	1 (6%)

In the following table, the Chirals column lists the number of chiral outliers, the number of chiral centers analysed, the number of these observed in the model and the number defined in the Chemical Component Dictionary. Similar counts are reported in the Torsion and Rings columns. '-' means no outliers of that kind were identified.

Mol	Type	Chain	Res	Link	Chirals	Torsions	Rings
4	NAG	E	1	4,1	-	2/6/23/26	0/1/1/1
4	NAG	E	2	4	-	0/6/23/26	0/1/1/1
4	BMA	E	3	4	-	0/2/19/22	0/1/1/1
4	MAN	E	4	4	-	0/2/19/22	0/1/1/1

*Continued on next page...*

Continued from previous page...

Mol	Type	Chain	Res	Link	Chirals	Torsions	Rings
4	NAG	E	5	4	-	4/6/23/26	0/1/1/1
4	MAN	E	6	4	-	0/2/19/22	0/1/1/1
4	NAG	E	7	4	-	4/6/23/26	0/1/1/1
4	FUC	E	8	4	-	-	0/1/1/1
5	NAG	F	1	5,1	-	4/6/23/26	0/1/1/1
5	NAG	F	2	5	-	0/6/23/26	0/1/1/1
5	BMA	F	3	5	-	0/2/19/22	0/1/1/1
5	MAN	F	4	5	-	0/2/19/22	0/1/1/1
5	NAG	F	5	5	-	4/6/23/26	0/1/1/1
5	MAN	F	6	5	-	0/2/19/22	0/1/1/1

All (1) bond length outliers are listed below:

Mol	Chain	Res	Type	Atoms	Z	Observed(Å)	Ideal(Å)
5	F	1	NAG	O5-C1	-2.76	1.39	1.43

All (10) bond angle outliers are listed below:

Mol	Chain	Res	Type	Atoms	Z	Observed(°)	Ideal(°)
4	E	4	MAN	O2-C2-C3	-3.09	103.95	110.14
5	F	4	MAN	O2-C2-C3	-2.68	104.77	110.14
5	F	4	MAN	C1-O5-C5	2.55	115.64	112.19
4	E	6	MAN	O2-C2-C3	-2.48	105.17	110.14
5	F	1	NAG	C3-C4-C5	2.45	114.61	110.24
4	E	6	MAN	C1-O5-C5	2.18	115.15	112.19
4	E	1	NAG	C1-O5-C5	2.14	115.09	112.19
5	F	6	MAN	O2-C2-C3	-2.10	105.94	110.14
4	E	3	BMA	C1-C2-C3	2.08	112.22	109.67
5	F	3	BMA	C1-O5-C5	2.07	115.00	112.19

There are no chirality outliers.

All (18) torsion outliers are listed below:

Mol	Chain	Res	Type	Atoms
5	F	5	NAG	C4-C5-C6-O6
4	E	5	NAG	O5-C5-C6-O6
5	F	5	NAG	O5-C5-C6-O6
4	E	5	NAG	C4-C5-C6-O6
4	E	1	NAG	C8-C7-N2-C2
4	E	1	NAG	O7-C7-N2-C2

Continued on next page...

*Continued from previous page...*

Mol	Chain	Res	Type	Atoms
4	E	5	NAG	C8-C7-N2-C2
4	E	5	NAG	O7-C7-N2-C2
4	E	7	NAG	C8-C7-N2-C2
4	E	7	NAG	O7-C7-N2-C2
5	F	1	NAG	C8-C7-N2-C2
5	F	1	NAG	O7-C7-N2-C2
5	F	5	NAG	C8-C7-N2-C2
5	F	5	NAG	O7-C7-N2-C2
5	F	1	NAG	C4-C5-C6-O6
5	F	1	NAG	O5-C5-C6-O6
4	E	7	NAG	C4-C5-C6-O6
4	E	7	NAG	O5-C5-C6-O6

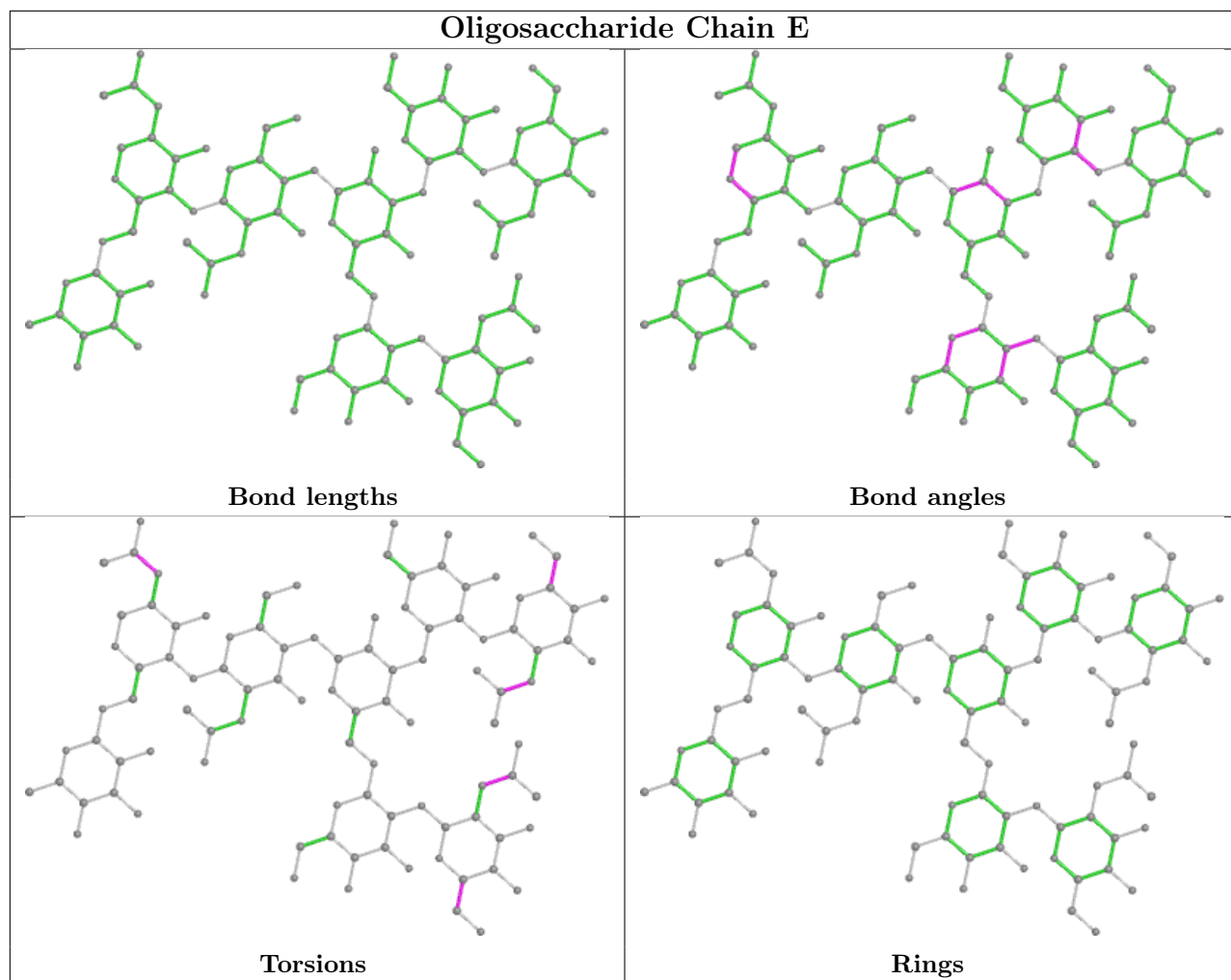
There are no ring outliers.

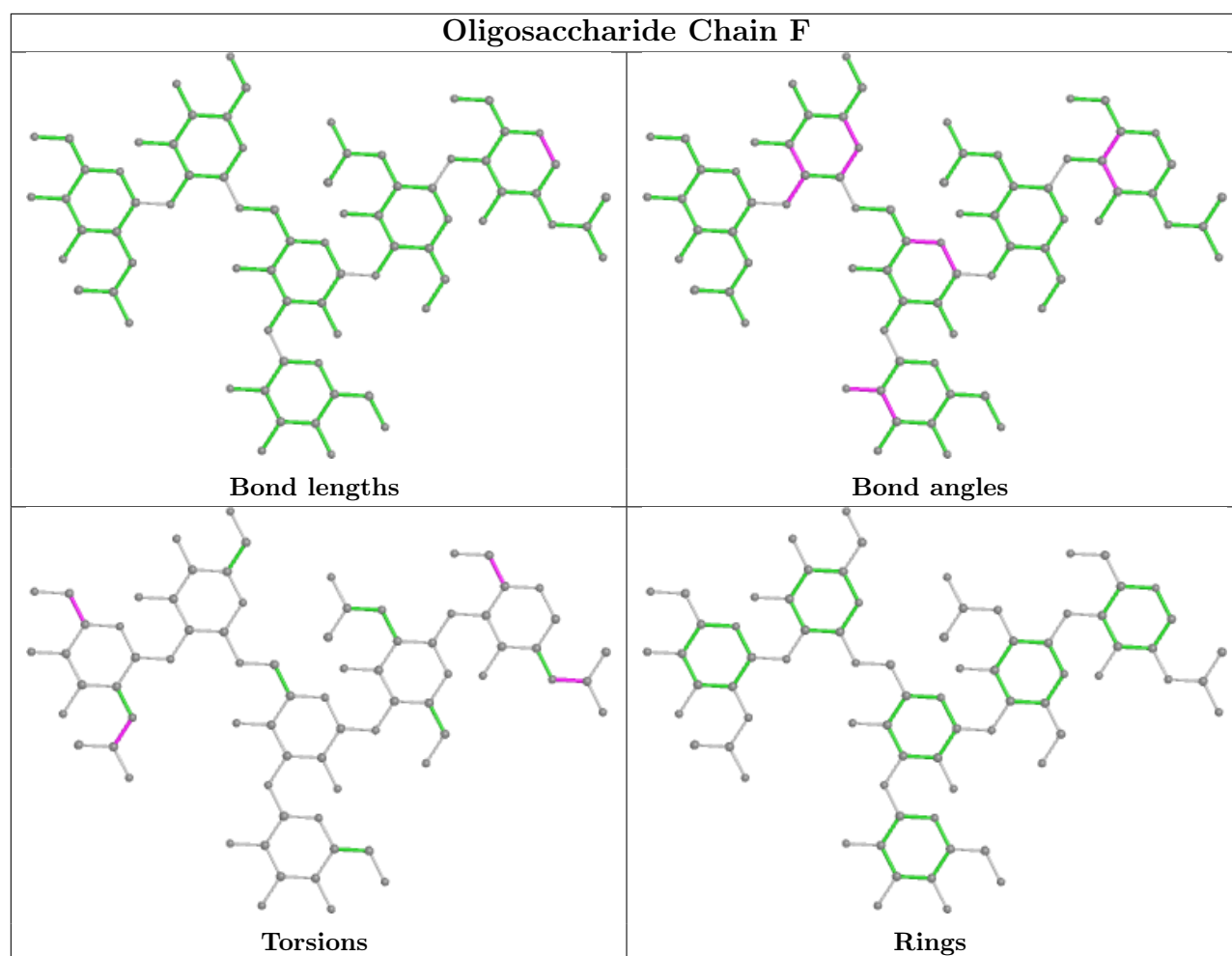
1 monomer is involved in 1 short contact:

Mol	Chain	Res	Type	Clashes	Symm-Clashes
4	E	1	NAG	1	0

The following is a two-dimensional graphical depiction of Mogul quality analysis of bond lengths, bond angles, torsion angles, and ring geometry for oligosaccharide.







## 5.6 Ligand geometry [i](#)

There are no ligands in this entry.

## 5.7 Other polymers [i](#)

There are no such residues in this entry.

## 5.8 Polymer linkage issues [i](#)

There are no chain breaks in this entry.

## 6 Fit of model and data

### 6.1 Protein, DNA and RNA chains

In the following table, the column labelled ‘#RSRZ > 2’ contains the number (and percentage) of RSRZ outliers, followed by percent RSRZ outliers for the chain as percentile scores relative to all X-ray entries and entries of similar resolution. The OWAB column contains the minimum, median, 95<sup>th</sup> percentile and maximum values of the occupancy-weighted average B-factor per residue. The column labelled ‘Q < 0.9’ lists the number of (and percentage) of residues with an average occupancy less than 0.9.

Mol	Chain	Analysed	<RSRZ>	#RSRZ>2	OWAB(Å <sup>2</sup> )	Q<0.9
1	A	208/208 (100%)	-0.20	2 (0%) 82 77	35, 46, 73, 81	0
1	B	207/208 (99%)	0.07	8 (3%) 39 29	36, 53, 89, 99	0
2	C	107/216 (49%)	-0.19	0 100 100	48, 56, 68, 71	0
2	L	214/216 (99%)	-0.34	0 100 100	30, 40, 59, 67	0
3	D	123/226 (54%)	-0.01	2 (1%) 72 66	49, 58, 75, 85	0
3	H	217/226 (96%)	0.10	10 (4%) 32 22	35, 49, 82, 89	0
All	All	1076/1300 (82%)	-0.09	22 (2%) 65 56	30, 51, 78, 99	0

All (22) RSRZ outliers are listed below:

Mol	Chain	Res	Type	RSRZ
1	B	296	TYR	4.4
1	B	329	PRO	4.2
3	H	190	GLY	4.1
3	H	208	ASP	3.9
3	H	204	ASN	3.9
1	B	444	SER	3.1
3	H	158	ALA	2.9
1	B	295	GLN	2.9
3	H	116	THR	2.9
1	B	328	LEU	2.7
3	H	172	SER	2.7
3	D	42	GLY	2.6
3	H	145	TYR	2.5
3	H	112	SER	2.4
1	B	330	ALA	2.3
1	B	261	CYS	2.2
3	H	187	SER	2.2
1	A	330	ALA	2.2
1	B	359	THR	2.1

*Continued on next page...*

*Continued from previous page...*

Mol	Chain	Res	Type	RSRZ
1	A	263	VAL	2.1
3	D	41	PRO	2.0
3	H	64	GLN	2.0

## 6.2 Non-standard residues in protein, DNA, RNA chains [i](#)

There are no non-standard protein/DNA/RNA residues in this entry.

## 6.3 Carbohydrates [i](#)

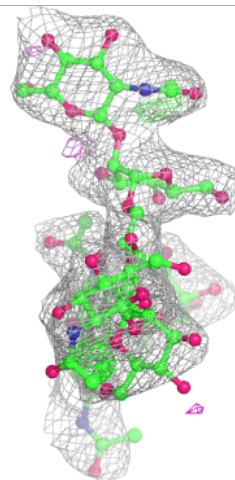
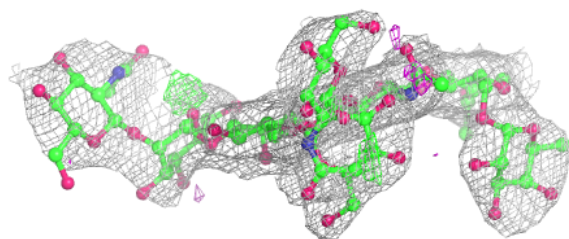
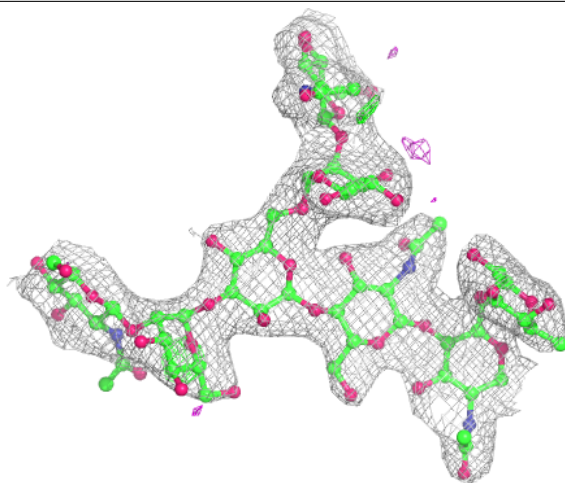
In the following table, the Atoms column lists the number of modelled atoms in the group and the number defined in the chemical component dictionary. The B-factors column lists the minimum, median, 95<sup>th</sup> percentile and maximum values of B factors of atoms in the group. The column labelled 'Q< 0.9' lists the number of atoms with occupancy less than 0.9.

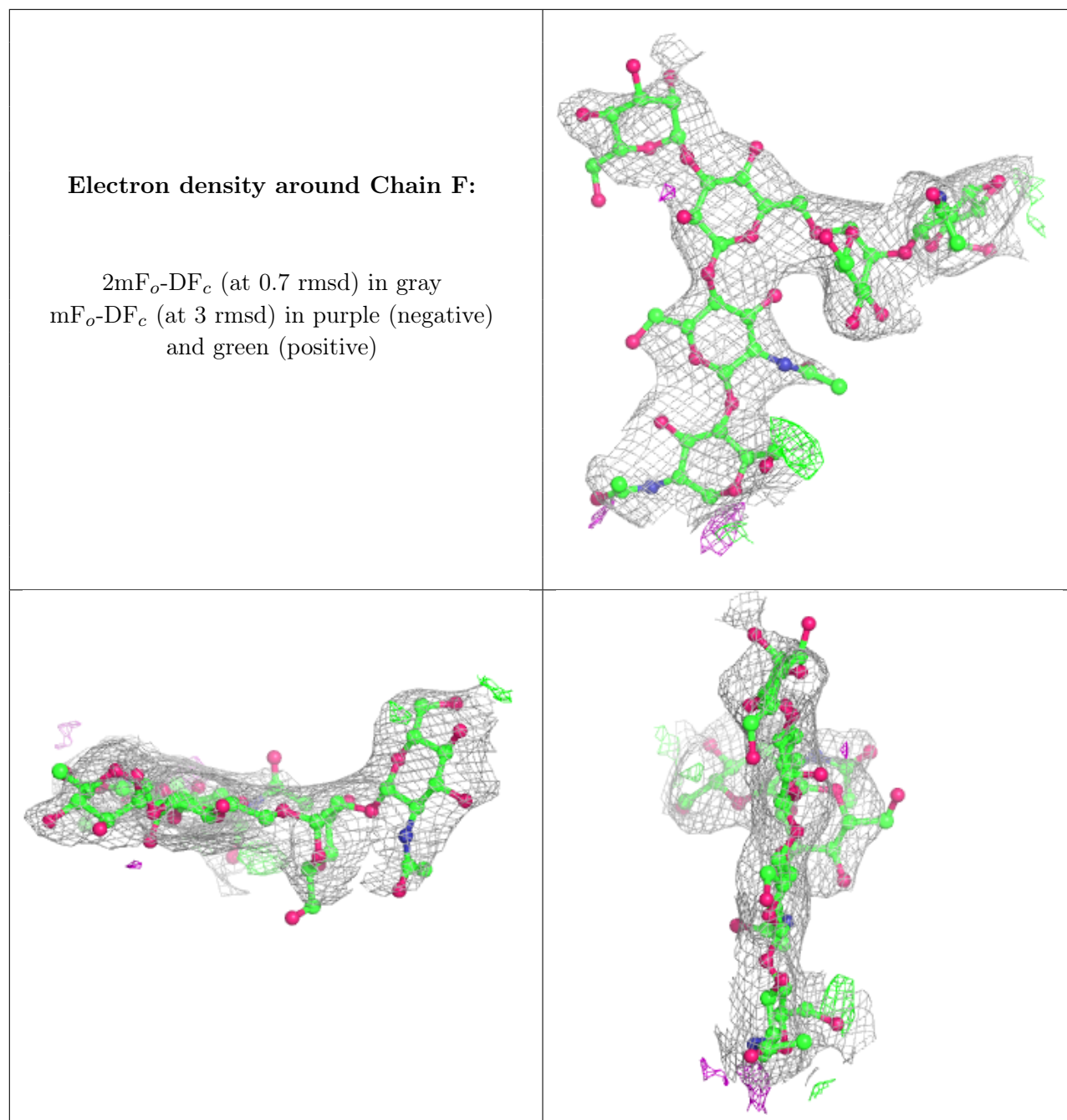
Mol	Type	Chain	Res	Atoms	RSCC	RSR	B-factors(Å <sup>2</sup> )	Q<0.9
5	NAG	F	1	14/15	0.73	0.24	89,91,93,94	0
5	NAG	F	5	14/15	0.73	0.28	76,81,85,86	0
4	NAG	E	5	14/15	0.81	0.43	85,89,93,93	0
4	MAN	E	4	11/12	0.82	0.35	75,77,81,84	0
5	MAN	F	6	11/12	0.82	0.38	77,85,86,87	0
5	NAG	F	2	14/15	0.85	0.34	85,88,89,89	0
5	MAN	F	4	11/12	0.85	0.29	82,85,87,91	0
4	NAG	E	1	14/15	0.87	0.21	60,62,65,66	0
5	BMA	F	3	11/12	0.90	0.20	83,85,86,86	0
4	BMA	E	3	11/12	0.92	0.17	58,63,70,72	0
4	NAG	E	7	14/15	0.92	0.22	53,55,57,58	0
4	MAN	E	6	11/12	0.94	0.16	53,55,58,58	0
4	NAG	E	2	14/15	0.94	0.13	57,60,63,64	0
4	FUC	E	8	10/11	0.95	0.28	57,57,59,60	0

The following is a graphical depiction of the model fit to experimental electron density for oligosaccharide. Each fit is shown from different orientation to approximate a three-dimensional view.

**Electron density around Chain E:**

$2mF_o-DF_c$  (at 0.7 rmsd) in gray  
 $mF_o-DF_c$  (at 3 rmsd) in purple (negative)  
and green (positive)





## 6.4 Ligands [i](#)

There are no ligands in this entry.

## 6.5 Other polymers [i](#)

There are no such residues in this entry.