



# Full wwPDB X-ray Structure Validation Report ⓘ

Jun 23, 2024 – 02:12 AM EDT

PDB ID : 4XPD  
Title : Crystal structure of yeast N-terminal acetyltransferase NatE (ppGpp) in complex with a bisubstrate  
Authors : Dong, J.; Wang, S.; York, J.D.  
Deposited on : 2015-01-16  
Resolution : 2.81 Å(reported)

This is a Full wwPDB X-ray Structure Validation Report for a publicly released PDB entry.

We welcome your comments at [validation@mail.wwpdb.org](mailto:validation@mail.wwpdb.org)

A user guide is available at

<https://www.wwpdb.org/validation/2017/XrayValidationReportHelp>

with specific help available everywhere you see the ⓘ symbol.

The types of validation reports are described at

<http://www.wwpdb.org/validation/2017/FAQs#types>.

---

The following versions of software and data (see [references ⓘ](#)) were used in the production of this report:

MolProbity : 4.02b-467  
Mogul : 1.8.5 (274361), CSD as541be (2020)  
Xtriage (Phenix) : 1.13  
EDS : 2.37.1  
buster-report : 1.1.7 (2018)  
Percentile statistics : 20191225.v01 (using entries in the PDB archive December 25th 2019)  
Refmac : 5.8.0158  
CCP4 : 7.0.044 (Gargrove)  
Ideal geometry (proteins) : Engh & Huber (2001)  
Ideal geometry (DNA, RNA) : Parkinson et al. (1996)  
Validation Pipeline (wwPDB-VP) : 2.37.1

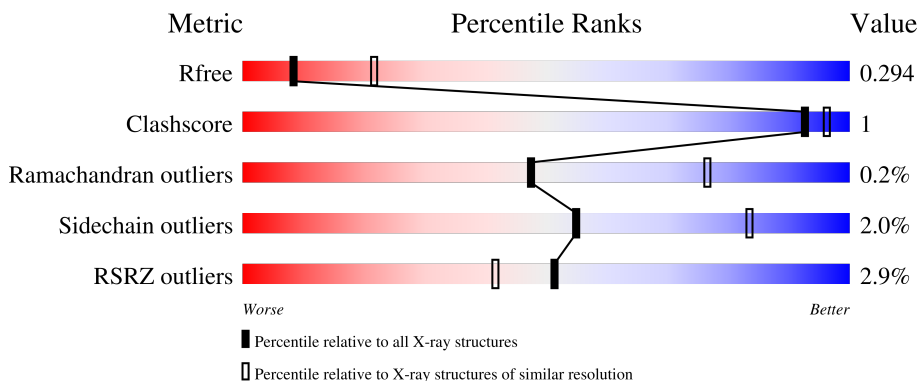
# 1 Overall quality at a glance

The following experimental techniques were used to determine the structure:

*X-RAY DIFFRACTION*

The reported resolution of this entry is 2.81 Å.

Percentile scores (ranging between 0-100) for global validation metrics of the entry are shown in the following graphic. The table shows the number of entries on which the scores are based.



Metric	Whole archive (#Entries)	Similar resolution (#Entries, resolution range(Å))
$R_{free}$	130704	3617 (2.84-2.80)
Clashscore	141614	4060 (2.84-2.80)
Ramachandran outliers	138981	3978 (2.84-2.80)
Sidechain outliers	138945	3980 (2.84-2.80)
RSRZ outliers	127900	3552 (2.84-2.80)

The table below summarises the geometric issues observed across the polymeric chains and their fit to the electron density. The red, orange, yellow and green segments of the lower bar indicate the fraction of residues that contain outliers for  $\geq 3$ , 2, 1 and 0 types of geometric quality criteria respectively. A grey segment represents the fraction of residues that are not modelled. The numeric value for each fraction is indicated below the corresponding segment, with a dot representing fractions  $\leq 5\%$ . The upper red bar (where present) indicates the fraction of residues that have poor fit to the electron density. The numeric value is given above the bar.

Mol	Chain	Length	Quality of chain
1	A	854	
2	B	238	
3	C	176	
4	F	8	

## 2 Entry composition

There are 8 unique types of molecules in this entry. The entry contains 9262 atoms, of which 0 are hydrogens and 0 are deuteriums.

In the tables below, the ZeroOcc column contains the number of atoms modelled with zero occupancy, the AltConf column contains the number of residues with at least one atom in alternate conformation and the Trace column contains the number of residues modelled with at most 2 atoms.

- Molecule 1 is a protein called N-terminal acetyltransferase A complex subunit NAT1.

Mol	Chain	Residues	Atoms					ZeroOcc	AltConf	Trace
			Total	C	N	O	S			
1	A	774	6311	4071	1046	1172	22	0	0	0

- Molecule 2 is a protein called N-terminal acetyltransferase A complex catalytic subunit ARD1.

Mol	Chain	Residues	Atoms					ZeroOcc	AltConf	Trace
			Total	C	N	O	S			
2	B	187	1527	966	264	287	10	0	0	0

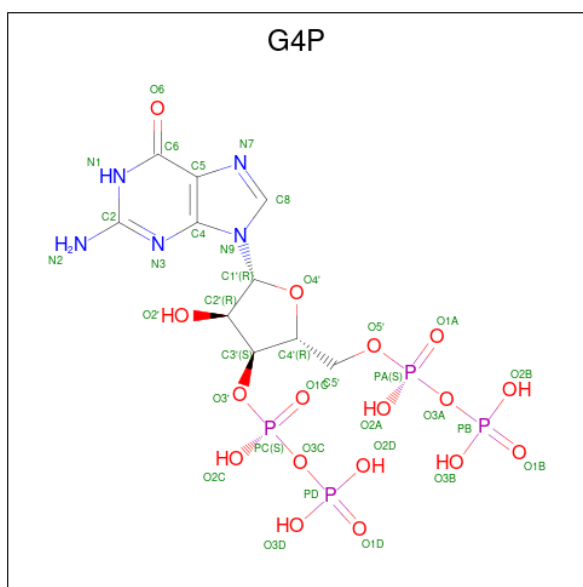
- Molecule 3 is a protein called N-terminal acetyltransferase A complex subunit NAT5.

Mol	Chain	Residues	Atoms					ZeroOcc	AltConf	Trace
			Total	C	N	O	S			
3	C	155	1222	793	203	221	5	0	0	0

- Molecule 4 is a protein called human ACTH8.

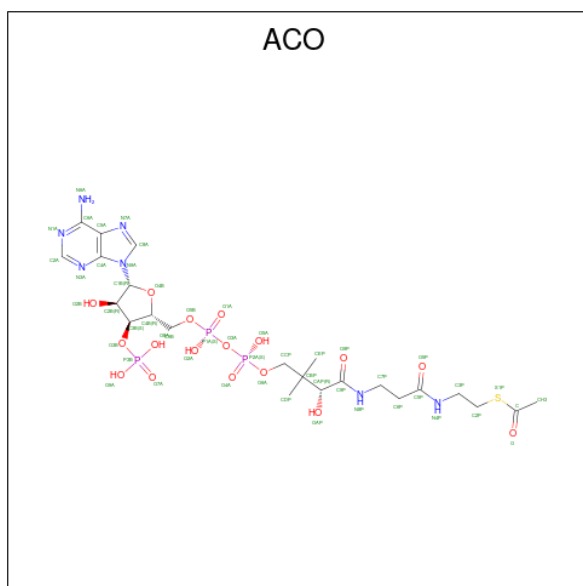
Mol	Chain	Residues	Atoms					ZeroOcc	AltConf	Trace
			Total	C	N	O	S			
4	F	6	51	31	8	11	1	0	0	0

- Molecule 5 is GUANOSINE-5',3'-TETRAPHOSPHATE (three-letter code: G4P) (formula: C<sub>10</sub>H<sub>17</sub>N<sub>5</sub>O<sub>17</sub>P<sub>4</sub>).



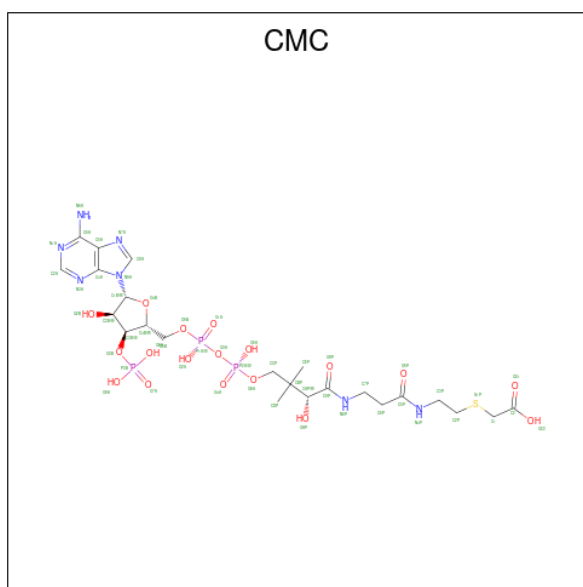
Mol	Chain	Residues	Atoms					ZeroOcc	AltConf
			Total	C	N	O	P		
5	A	1	36	10	5	17	4	0	0

- Molecule 6 is ACETYL COENZYME \*A (three-letter code: ACO) (formula:  $C_{23}H_{38}N_7O_{17}P_3S$ ).



Mol	Chain	Residues	Atoms						ZeroOcc	AltConf
			Total	C	N	O	P	S		
6	C	1	51	23	7	17	3	1	0	0

- Molecule 7 is CARBOXYMETHYL COENZYME \*A (three-letter code: CMC) (formula:  $C_{23}H_{38}N_7O_{18}P_3S$ ).



Mol	Chain	Residues	Atoms					ZeroOcc	AltConf	
			Total	C	N	O	P			S
7	F	1	51	23	7	17	3	1	0	0

- Molecule 8 is water.

Mol	Chain	Residues	Atoms	ZeroOcc	AltConf
8	A	9	Total O 9 9	0	0
8	B	3	Total O 3 3	0	0
8	C	1	Total O 1 1	0	0





## 4 Data and refinement statistics

Property	Value	Source
Space group	P 21 21 21	Depositor
Cell constants a, b, c, $\alpha$ , $\beta$ , $\gamma$	85.56Å 113.65Å 146.72Å 90.00° 90.00° 90.00°	Depositor
Resolution (Å)	50.00 – 2.81 50.01 – 2.81	Depositor EDS
% Data completeness (in resolution range)	86.0 (50.00-2.81) 86.1 (50.01-2.81)	Depositor EDS
$R_{merge}$	(Not available)	Depositor
$R_{sym}$	(Not available)	Depositor
$\langle I/\sigma(I) \rangle$ <sup>1</sup>	4.06 (at 2.81Å)	Xtrriage
Refinement program	REFMAC 5.8.0073	Depositor
R, $R_{free}$	0.236 , 0.297 0.236 , 0.294	Depositor DCC
$R_{free}$ test set	1560 reflections (5.07%)	wwPDB-VP
Wilson B-factor (Å <sup>2</sup> )	44.6	Xtrriage
Anisotropy	0.198	Xtrriage
Bulk solvent $k_{sol}$ (e/Å <sup>3</sup> ), $B_{sol}$ (Å <sup>2</sup> )	0.30 , 38.0	EDS
L-test for twinning <sup>2</sup>	$\langle  L  \rangle = 0.49$ , $\langle L^2 \rangle = 0.33$	Xtrriage
Estimated twinning fraction	No twinning to report.	Xtrriage
$F_o, F_c$ correlation	0.89	EDS
Total number of atoms	9262	wwPDB-VP
Average B, all atoms (Å <sup>2</sup> )	48.0	wwPDB-VP

Xtrriage's analysis on translational NCS is as follows: *The largest off-origin peak in the Patterson function is 3.41% of the height of the origin peak. No significant pseudotranslation is detected.*

<sup>1</sup>Intensities estimated from amplitudes.

<sup>2</sup>Theoretical values of  $\langle |L| \rangle$ ,  $\langle L^2 \rangle$  for acentric reflections are 0.5, 0.333 respectively for untwinned datasets, and 0.375, 0.2 for perfectly twinned datasets.



## 5 Model quality [i](#)

### 5.1 Standard geometry [i](#)

Bond lengths and bond angles in the following residue types are not validated in this section: CMC, ACO, G4P

The Z score for a bond length (or angle) is the number of standard deviations the observed value is removed from the expected value. A bond length (or angle) with  $|Z| > 5$  is considered an outlier worth inspection. RMSZ is the root-mean-square of all Z scores of the bond lengths (or angles).

Mol	Chain	Bond lengths		Bond angles	
		RMSZ	# Z  >5	RMSZ	# Z  >5
1	A	0.30	0/6447	0.46	0/8692
2	B	0.29	0/1555	0.51	0/2099
3	C	0.29	0/1249	0.45	0/1689
4	F	0.30	0/52	0.38	0/68
All	All	0.29	0/9303	0.46	0/12548

There are no bond length outliers.

There are no bond angle outliers.

There are no chirality outliers.

There are no planarity outliers.

### 5.2 Too-close contacts [i](#)

In the following table, the Non-H and H(model) columns list the number of non-hydrogen atoms and hydrogen atoms in the chain respectively. The H(added) column lists the number of hydrogen atoms added and optimized by MolProbity. The Clashes column lists the number of clashes within the asymmetric unit, whereas Symm-Clashes lists symmetry-related clashes.

Mol	Chain	Non-H	H(model)	H(added)	Clashes	Symm-Clashes
1	A	6311	0	6246	14	0
2	B	1527	0	1506	8	0
3	C	1222	0	1210	4	0
4	F	51	0	41	0	0
5	A	36	0	11	0	0
6	C	51	0	34	1	0
7	F	51	0	32	0	0
8	A	9	0	0	0	0
8	B	3	0	0	0	0

*Continued on next page...*

*Continued from previous page...*

Mol	Chain	Non-H	H(model)	H(added)	Clashes	Symm-Clashes
8	C	1	0	0	0	0
All	All	9262	0	9080	27	0

The all-atom clashscore is defined as the number of clashes found per 1000 atoms (including hydrogen atoms). The all-atom clashscore for this structure is 1.

All (27) close contacts within the same asymmetric unit are listed below, sorted by their clash magnitude.

Atom-1	Atom-2	Interatomic distance (Å)	Clash overlap (Å)
2:B:223:ASP:OD1	2:B:224:LEU:N	2.39	0.55
3:C:20:THR:HG22	3:C:36:PHE:CG	2.44	0.52
1:A:321:ASP:OD1	1:A:321:ASP:N	2.44	0.51
2:B:222:SER:HB3	2:B:223:ASP:HB2	1.93	0.51
3:C:102:TYR:O	3:C:107:ILE:HD12	2.13	0.48
1:A:305:TYR:HB3	1:A:308:CYS:SG	2.55	0.47
1:A:47:LEU:HD21	1:A:56:SER:HB2	1.96	0.46
1:A:561:ILE:HB	1:A:562:PRO:HD3	1.96	0.46
1:A:700:TYR:OH	1:A:717:ASP:HB3	2.16	0.45
1:A:772:VAL:HG13	1:A:773:VAL:HG23	1.99	0.45
2:B:107:GLN:HA	2:B:108:ASN:HA	1.74	0.45
1:A:364:GLU:O	1:A:368:LEU:HB2	2.16	0.44
2:B:39:SER:HB2	2:B:40:TRP:CE3	2.53	0.43
1:A:349:LYS:N	1:A:350:PRO:HD2	2.34	0.43
6:C:201:ACO:O9P	6:C:201:ACO:H61	2.18	0.43
2:B:175:SER:OG	2:B:176:ILE:N	2.52	0.43
1:A:434:MET:HB3	1:A:465:ALA:HB2	2.00	0.42
1:A:760:ARG:HA	1:A:761:ASN:HA	1.88	0.42
3:C:87:SER:N	3:C:88:LEU:HB2	2.35	0.42
1:A:67:VAL:N	1:A:68:GLY:HA2	2.35	0.41
2:B:95:TYR:CE2	2:B:119:SER:HB2	2.55	0.41
3:C:134:VAL:HG22	3:C:166:GLN:OE1	2.20	0.41
1:A:237:VAL:O	1:A:240:LYS:CE	2.69	0.41
2:B:109:GLU:HB3	2:B:110:PRO:HD2	2.03	0.41
1:A:700:TYR:OH	1:A:717:ASP:CB	2.70	0.40
1:A:482:ASP:OD1	1:A:482:ASP:N	2.54	0.40
2:B:219:ASP:O	2:B:220:LEU:HB2	2.21	0.40

There are no symmetry-related clashes.

## 5.3 Torsion angles [i](#)

### 5.3.1 Protein backbone [i](#)

In the following table, the Percentiles column shows the percent Ramachandran outliers of the chain as a percentile score with respect to all X-ray entries followed by that with respect to entries of similar resolution.

The Analysed column shows the number of residues for which the backbone conformation was analysed, and the total number of residues.

Mol	Chain	Analysed	Favoured	Allowed	Outliers	Percentiles	
1	A	762/854 (89%)	730 (96%)	32 (4%)	0	100	100
2	B	179/238 (75%)	171 (96%)	7 (4%)	1 (1%)	25	54
3	C	149/176 (85%)	145 (97%)	3 (2%)	1 (1%)	22	51
4	F	4/8 (50%)	4 (100%)	0	0	100	100
All	All	1094/1276 (86%)	1050 (96%)	42 (4%)	2 (0%)	47	76

All (2) Ramachandran outliers are listed below:

Mol	Chain	Res	Type
2	B	220	LEU
3	C	153	THR

### 5.3.2 Protein sidechains [i](#)

In the following table, the Percentiles column shows the percent sidechain outliers of the chain as a percentile score with respect to all X-ray entries followed by that with respect to entries of similar resolution.

The Analysed column shows the number of residues for which the sidechain conformation was analysed, and the total number of residues.

Mol	Chain	Analysed	Rotameric	Outliers	Percentiles	
1	A	674/759 (89%)	660 (98%)	14 (2%)	53	82
2	B	167/216 (77%)	163 (98%)	4 (2%)	49	80
3	C	132/153 (86%)	131 (99%)	1 (1%)	81	94
4	F	6/8 (75%)	5 (83%)	1 (17%)	2	6
All	All	979/1136 (86%)	959 (98%)	20 (2%)	55	83

All (20) residues with a non-rotameric sidechain are listed below:

Mol	Chain	Res	Type
1	A	129	ARG
1	A	232	ASP
1	A	266	THR
1	A	309	GLU
1	A	368	LEU
1	A	434	MET
1	A	450	GLN
1	A	514	ARG
1	A	526	LYS
1	A	661	ARG
1	A	697	THR
1	A	740	ARG
1	A	789	GLU
1	A	825	ILE
2	B	7	ARG
2	B	50	THR
2	B	53	ASP
2	B	208	ARG
3	C	136	ASP
4	F	6	HIS

Sometimes sidechains can be flipped to improve hydrogen bonding and reduce clashes. All (1) such sidechains are listed below:

Mol	Chain	Res	Type
3	C	101	ASN

### 5.3.3 RNA [i](#)

There are no RNA molecules in this entry.

### 5.4 Non-standard residues in protein, DNA, RNA chains [i](#)

There are no non-standard protein/DNA/RNA residues in this entry.

### 5.5 Carbohydrates [i](#)

There are no monosaccharides in this entry.

## 5.6 Ligand geometry

3 ligands are modelled in this entry.

In the following table, the Counts columns list the number of bonds (or angles) for which Mogul statistics could be retrieved, the number of bonds (or angles) that are observed in the model and the number of bonds (or angles) that are defined in the Chemical Component Dictionary. The Link column lists molecule types, if any, to which the group is linked. The Z score for a bond length (or angle) is the number of standard deviations the observed value is removed from the expected value. A bond length (or angle) with  $|Z| > 2$  is considered an outlier worth inspection. RMSZ is the root-mean-square of all Z scores of the bond lengths (or angles).

Mol	Type	Chain	Res	Link	Bond lengths			Bond angles		
					Counts	RMSZ	# Z  > 2	Counts	RMSZ	# Z  > 2
7	CMC	F	101	4	45,53,54	1.02	2 (4%)	55,78,80	1.34	5 (9%)
5	G4P	A	901	-	30,38,38	0.93	1 (3%)	42,61,61	1.24	5 (11%)
6	ACO	C	201	-	45,53,53	0.89	3 (6%)	56,79,79	1.47	9 (16%)

In the following table, the Chirals column lists the number of chiral outliers, the number of chiral centers analysed, the number of these observed in the model and the number defined in the Chemical Component Dictionary. Similar counts are reported in the Torsion and Rings columns. '-' means no outliers of that kind were identified.

Mol	Type	Chain	Res	Link	Chirals	Torsions	Rings
7	CMC	F	101	4	-	7/46/67/68	0/3/3/3
5	G4P	A	901	-	-	3/23/43/43	0/3/3/3
6	ACO	C	201	-	-	18/47/67/67	0/3/3/3

All (6) bond length outliers are listed below:

Mol	Chain	Res	Type	Atoms	Z	Observed(Å)	Ideal(Å)
7	F	101	CMC	C9P-N8P	-3.31	1.26	1.33
7	F	101	CMC	C5P-N4P	-3.22	1.26	1.33
5	A	901	G4P	C6-N1	-2.26	1.34	1.37
6	C	201	ACO	C5A-C4A	2.25	1.46	1.40
6	C	201	ACO	O4B-C1B	2.16	1.44	1.41
6	C	201	ACO	P3B-O3B	2.04	1.63	1.59

All (19) bond angle outliers are listed below:

Mol	Chain	Res	Type	Atoms	Z	Observed(°)	Ideal(°)
7	F	101	CMC	N3A-C2A-N1A	-4.28	121.99	128.68
6	C	201	ACO	N3A-C2A-N1A	-4.24	122.05	128.68

*Continued on next page...*

Continued from previous page...

Mol	Chain	Res	Type	Atoms	Z	Observed(°)	Ideal(°)
6	C	201	ACO	C2P-C3P-N4P	4.08	121.00	112.42
7	F	101	CMC	P2A-O3A-P1A	-3.95	119.27	132.83
6	C	201	ACO	C1B-N9A-C4A	-3.89	119.81	126.64
7	F	101	CMC	C2P-S1P-C1	3.41	107.41	101.71
5	A	901	G4P	O4'-C1'-C2'	-3.08	102.43	106.93
6	C	201	ACO	P2A-O3A-P1A	-3.00	122.55	132.83
6	C	201	ACO	C4A-C5A-N7A	-2.89	106.39	109.40
5	A	901	G4P	C8-N7-C5	2.56	107.86	102.99
5	A	901	G4P	PC-O3C-PD	-2.50	124.25	132.83
5	A	901	G4P	C5-C6-N1	2.45	118.28	113.95
7	F	101	CMC	C7P-N8P-C9P	2.44	126.95	122.59
5	A	901	G4P	PA-O3A-PB	-2.41	124.56	132.83
6	C	201	ACO	C7P-C6P-C5P	-2.30	108.53	112.36
6	C	201	ACO	C2P-S1P-C	2.30	113.76	101.68
6	C	201	ACO	C2A-N1A-C6A	2.27	122.64	118.75
6	C	201	ACO	C6P-C7P-N8P	2.09	116.11	111.90
7	F	101	CMC	C2P-C3P-N4P	-2.07	108.08	112.42

There are no chirality outliers.

All (28) torsion outliers are listed below:

Mol	Chain	Res	Type	Atoms
6	C	201	ACO	C4B-C3B-O3B-P3B
6	C	201	ACO	C3B-O3B-P3B-O7A
6	C	201	ACO	C5B-O5B-P1A-O1A
6	C	201	ACO	C5B-O5B-P1A-O2A
6	C	201	ACO	C3P-C2P-S1P-C
6	C	201	ACO	O-C-S1P-C2P
6	C	201	ACO	CH3-C-S1P-C2P
7	F	101	CMC	C5B-O5B-P1A-O2A
7	F	101	CMC	CCP-O6A-P2A-O3A
7	F	101	CMC	CCP-O6A-P2A-O4A
6	C	201	ACO	C6P-C7P-N8P-C9P
5	A	901	G4P	O4'-C4'-C5'-O5'
5	A	901	G4P	C3'-C4'-C5'-O5'
6	C	201	ACO	O4B-C4B-C5B-O5B
6	C	201	ACO	C5P-C6P-C7P-N8P
5	A	901	G4P	C4'-C5'-O5'-PA
6	C	201	ACO	S1P-C2P-C3P-N4P
6	C	201	ACO	C3B-O3B-P3B-O9A
6	C	201	ACO	C5B-O5B-P1A-O3A
7	F	101	CMC	C5B-O5B-P1A-O3A

Continued on next page...

Continued from previous page...

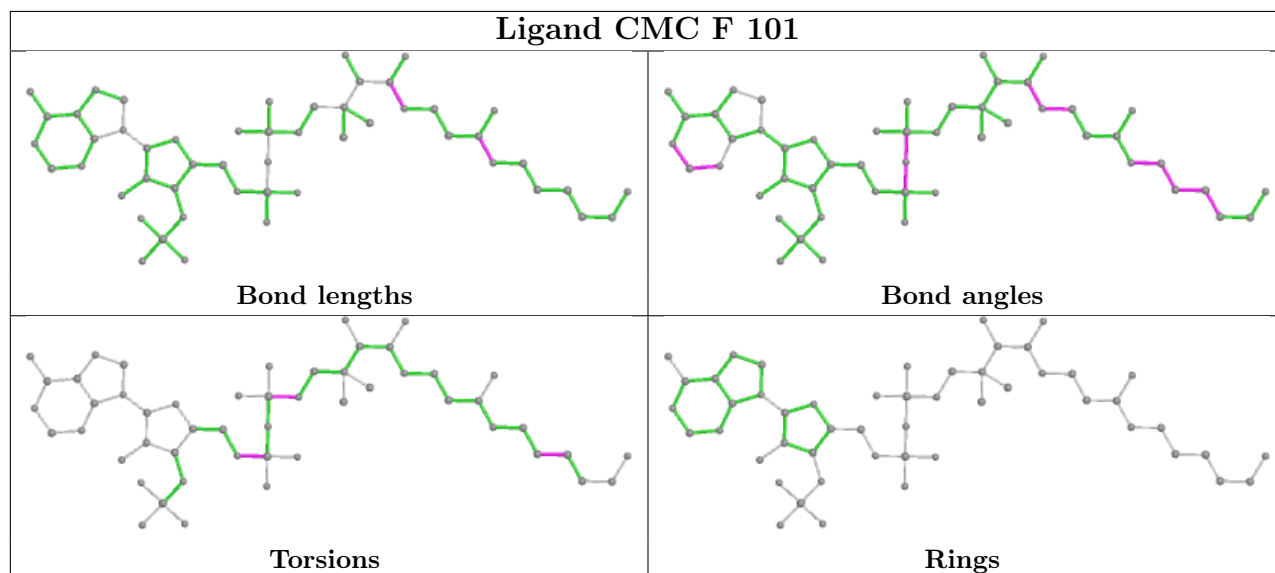
Mol	Chain	Res	Type	Atoms
7	F	101	CMC	CCP-O6A-P2A-O5A
6	C	201	ACO	O5P-C5P-C6P-C7P
6	C	201	ACO	N4P-C5P-C6P-C7P
6	C	201	ACO	C6P-C5P-N4P-C3P
6	C	201	ACO	N8P-C9P-CAP-OAP
7	F	101	CMC	C3P-C2P-S1P-C1
6	C	201	ACO	C2P-C3P-N4P-C5P
7	F	101	CMC	C5B-O5B-P1A-O1A

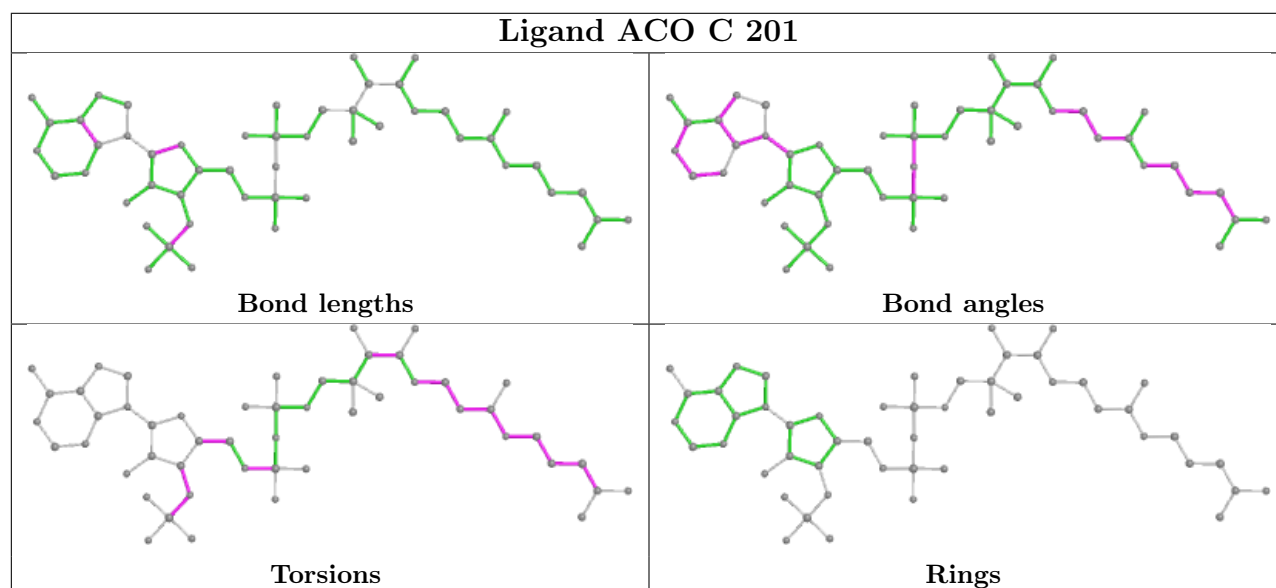
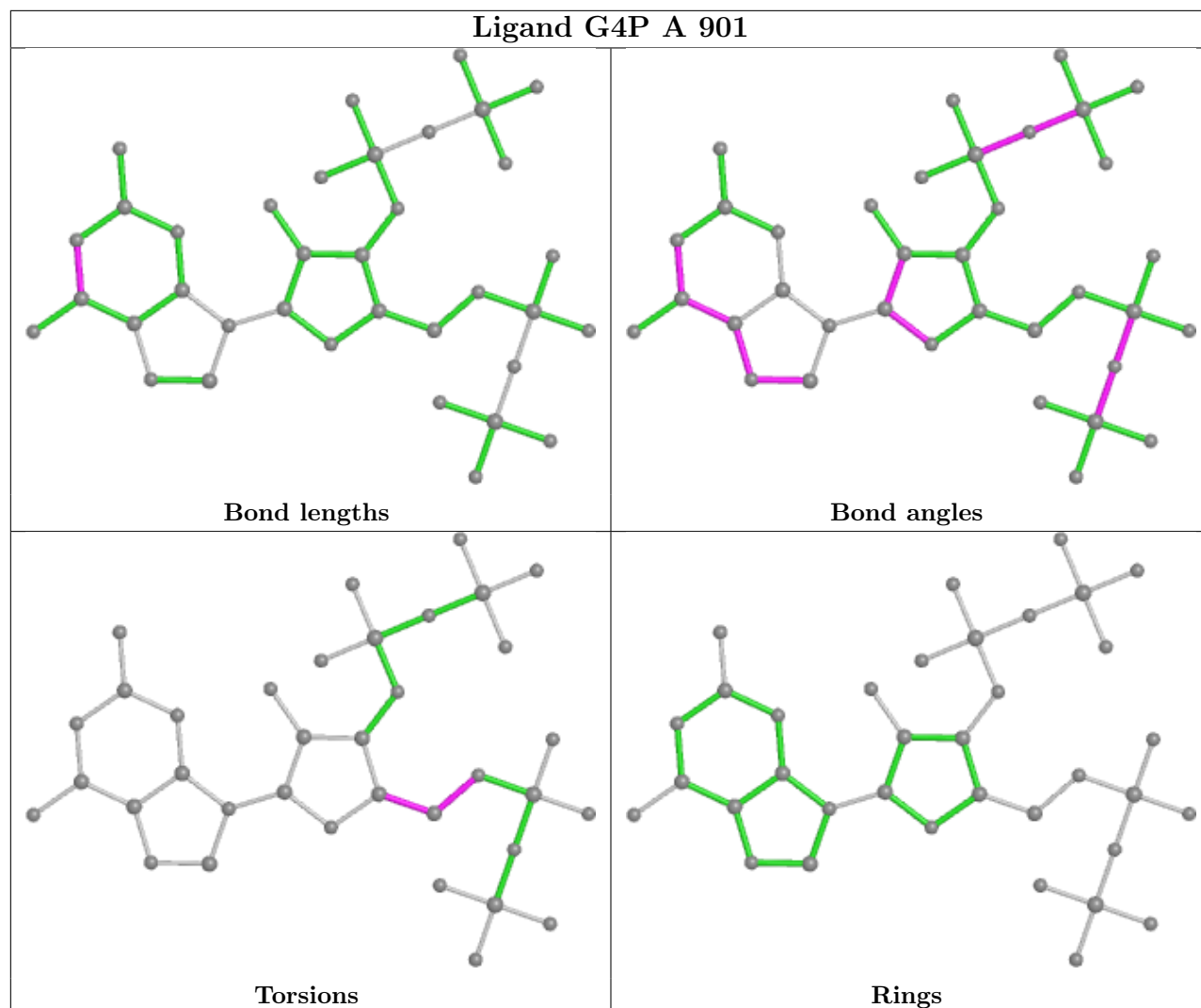
There are no ring outliers.

1 monomer is involved in 1 short contact:

Mol	Chain	Res	Type	Clashes	Symm-Clashes
6	C	201	ACO	1	0

The following is a two-dimensional graphical depiction of Mogul quality analysis of bond lengths, bond angles, torsion angles, and ring geometry for all instances of the Ligand of Interest. In addition, ligands with molecular weight > 250 and outliers as shown on the validation Tables will also be included. For torsion angles, if less than 5% of the Mogul distribution of torsion angles is within 10 degrees of the torsion angle in question, then that torsion angle is considered an outlier. Any bond that is central to one or more torsion angles identified as an outlier by Mogul will be highlighted in the graph. For rings, the root-mean-square deviation (RMSD) between the ring in question and similar rings identified by Mogul is calculated over all ring torsion angles. If the average RMSD is greater than 60 degrees and the minimal RMSD between the ring in question and any Mogul-identified rings is also greater than 60 degrees, then that ring is considered an outlier. The outliers are highlighted in purple. The color gray indicates Mogul did not find sufficient equivalents in the CSD to analyse the geometry.







## 5.7 Other polymers [i](#)

There are no such residues in this entry.

## 5.8 Polymer linkage issues [i](#)

There are no chain breaks in this entry.

## 6 Fit of model and data

### 6.1 Protein, DNA and RNA chains

In the following table, the column labelled ‘#RSRZ > 2’ contains the number (and percentage) of RSRZ outliers, followed by percent RSRZ outliers for the chain as percentile scores relative to all X-ray entries and entries of similar resolution. The OWAB column contains the minimum, median, 95<sup>th</sup> percentile and maximum values of the occupancy-weighted average B-factor per residue. The column labelled ‘Q < 0.9’ lists the number of (and percentage) of residues with an average occupancy less than 0.9.

Mol	Chain	Analysed	<RSRZ>	#RSRZ>2	OWAB(Å <sup>2</sup> )	Q<0.9
1	A	774/854 (90%)	0.21	26 (3%) 45 35	21, 51, 84, 99	0
2	B	187/238 (78%)	-0.00	5 (2%) 54 44	16, 34, 84, 97	0
3	C	155/176 (88%)	0.05	1 (0%) 89 86	29, 50, 72, 80	0
4	F	6/8 (75%)	0.60	0 100 100	25, 37, 77, 84	0
All	All	1122/1276 (87%)	0.15	32 (2%) 51 41	16, 48, 83, 99	0

All (32) RSRZ outliers are listed below:

Mol	Chain	Res	Type	RSRZ
2	B	220	LEU	5.1
3	C	88	LEU	3.8
2	B	53	ASP	3.8
1	A	328	LYS	3.7
1	A	330	ARG	3.4
1	A	289	GLY	3.4
1	A	93	CYS	3.3
2	B	216	LEU	3.2
1	A	31	TYR	3.1
2	B	222	SER	3.0
1	A	280	LEU	3.0
1	A	260	ALA	2.9
1	A	258	LYS	2.9
1	A	46	ILE	2.9
1	A	286	GLY	2.9
1	A	291	ASN	2.8
1	A	58	ALA	2.8
1	A	50	ASP	2.5
1	A	290	ASP	2.5
1	A	837	SER	2.4
1	A	232	ASP	2.4

*Continued on next page...*

*Continued from previous page...*

Mol	Chain	Res	Type	RSRZ
1	A	113	TRP	2.4
1	A	360	SER	2.3
1	A	40	LEU	2.3
1	A	119	ASN	2.3
1	A	298	TYR	2.3
2	B	83	PRO	2.3
1	A	257	LEU	2.2
1	A	785	PHE	2.2
1	A	295	LYS	2.1
1	A	288	GLN	2.0
1	A	545	TRP	2.0

## 6.2 Non-standard residues in protein, DNA, RNA chains [i](#)

There are no non-standard protein/DNA/RNA residues in this entry.

## 6.3 Carbohydrates [i](#)

There are no monosaccharides in this entry.

## 6.4 Ligands [i](#)

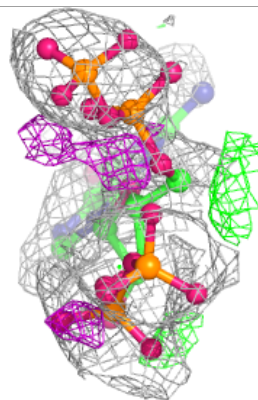
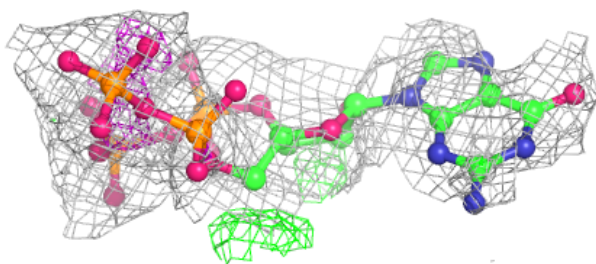
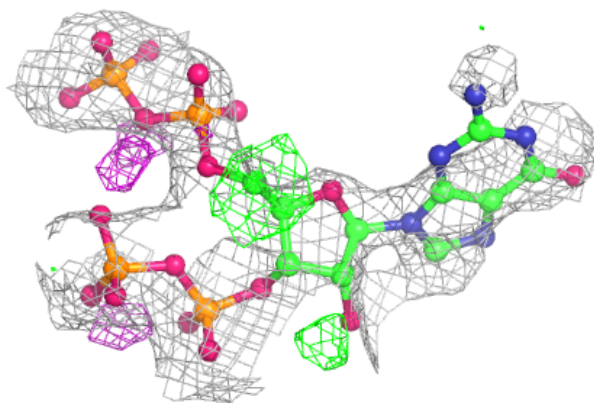
In the following table, the Atoms column lists the number of modelled atoms in the group and the number defined in the chemical component dictionary. The B-factors column lists the minimum, median, 95<sup>th</sup> percentile and maximum values of B factors of atoms in the group. The column labelled 'Q< 0.9' lists the number of atoms with occupancy less than 0.9.

Mol	Type	Chain	Res	Atoms	RSCC	RSR	B-factors(Å <sup>2</sup> )	Q<0.9
5	G4P	A	901	36/36	0.76	0.28	78,101,109,109	0
6	ACO	C	201	51/51	0.91	0.21	39,46,72,73	0
7	CMC	F	101	51/52	0.96	0.15	26,29,35,36	0

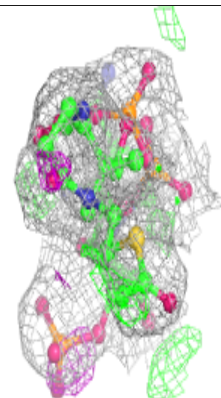
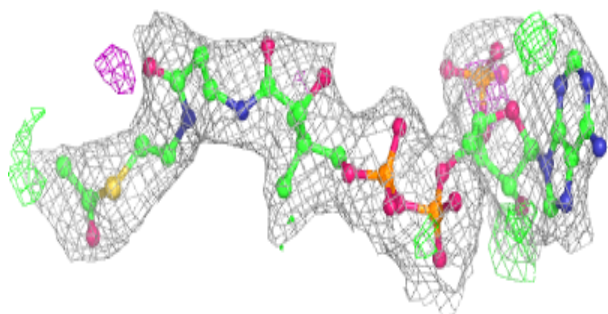
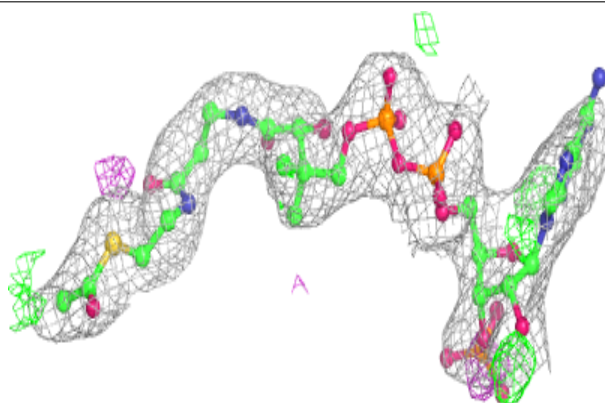
The following is a graphical depiction of the model fit to experimental electron density of all instances of the Ligand of Interest. In addition, ligands with molecular weight > 250 and outliers as shown on the geometry validation Tables will also be included. Each fit is shown from different orientation to approximate a three-dimensional view.

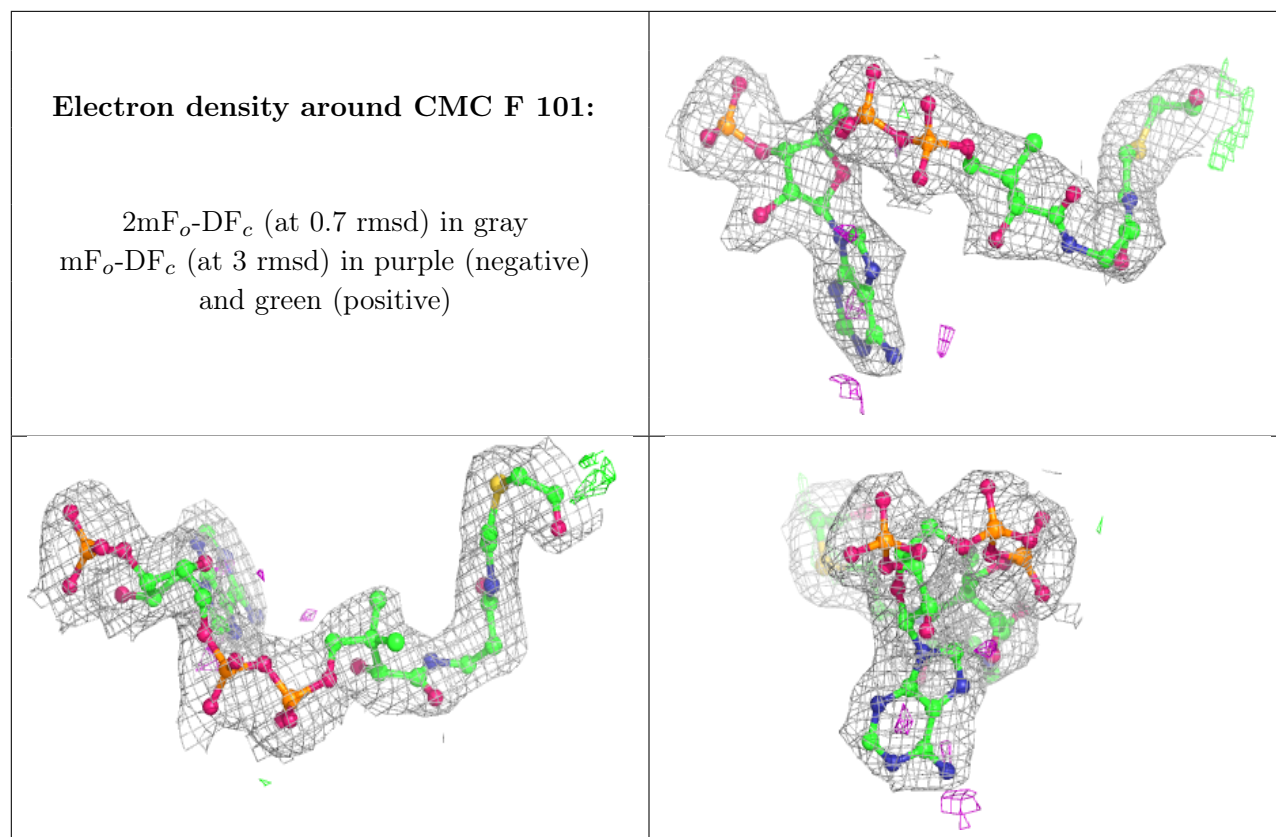
**Electron density around G4P A 901:**

$2mF_o-DF_c$  (at 0.7 rmsd) in gray  
 $mF_o-DF_c$  (at 3 rmsd) in purple (negative)  
and green (positive)

**Electron density around ACO C 201:**

$2mF_o-DF_c$  (at 0.7 rmsd) in gray  
 $mF_o-DF_c$  (at 3 rmsd) in purple (negative)  
and green (positive)





## 6.5 Other polymers [i](#)

There are no such residues in this entry.