



Full wwPDB X-ray Structure Validation Report ⓘ

Sep 17, 2023 – 07:54 PM EDT

PDB ID : 4XPF
Title : X-ray structure of Drosophila dopamine transporter with subsiteB mutations (D121G/S426M) bound to RTI-55
Authors : Penmatsa, A.; Wang, K.H.; Gouaux, E.
Deposited on : 2015-01-16
Resolution : 3.27 Å (reported)

This is a Full wwPDB X-ray Structure Validation Report for a publicly released PDB entry.

We welcome your comments at validation@mail.wwpdb.org

A user guide is available at

<https://www.wwpdb.org/validation/2017/XrayValidationReportHelp>

with specific help available everywhere you see the ⓘ symbol.

The types of validation reports are described at

<http://www.wwpdb.org/validation/2017/FAQs#types>.

The following versions of software and data (see [references ⓘ](#)) were used in the production of this report:

MolProbity : 4.02b-467
Mogul : 1.8.5 (274361), CSD as541be (2020)
Xtriage (Phenix) : 1.13
EDS : 2.35.1
buster-report : 1.1.7 (2018)
Percentile statistics : 20191225.v01 (using entries in the PDB archive December 25th 2019)
Refmac : 5.8.0158
CCP4 : 7.0.044 (Gargrove)
Ideal geometry (proteins) : Engh & Huber (2001)
Ideal geometry (DNA, RNA) : Parkinson et al. (1996)
Validation Pipeline (wwPDB-VP) : 2.35.1

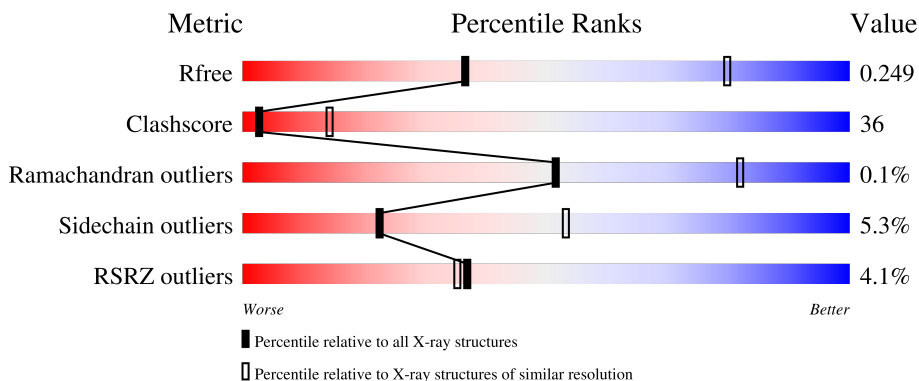
1 Overall quality at a glance

The following experimental techniques were used to determine the structure:

X-RAY DIFFRACTION


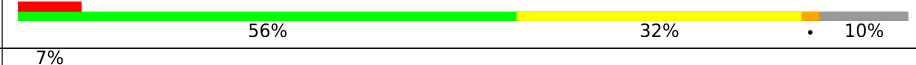
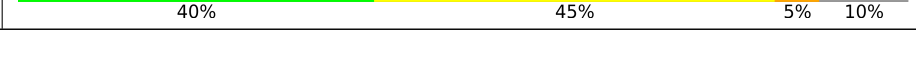
The reported resolution of this entry is 3.27 Å.

Percentile scores (ranging between 0-100) for global validation metrics of the entry are shown in the following graphic. The table shows the number of entries on which the scores are based.



Metric	Whole archive (#Entries)	Similar resolution (#Entries, resolution range(Å))
R_{free}	130704	1177 (3.32-3.24)
Clashscore	141614	1044 (3.30-3.26)
Ramachandran outliers	138981	1026 (3.30-3.26)
Sidechain outliers	138945	1025 (3.30-3.26)
RSRZ outliers	127900	1141 (3.32-3.24)

The table below summarises the geometric issues observed across the polymeric chains and their fit to the electron density. The red, orange, yellow and green segments of the lower bar indicate the fraction of residues that contain outliers for ≥ 3 , 2, 1 and 0 types of geometric quality criteria respectively. A grey segment represents the fraction of residues that are not modelled. The numeric value for each fraction is indicated below the corresponding segment, with a dot representing fractions $\leq 5\%$. The upper red bar (where present) indicates the fraction of residues that have poor fit to the electron density. The numeric value is given above the bar.

Mol	Chain	Length	Quality of chain
1	A	543	
2	L	237	
3	H	240	

The following table lists non-polymeric compounds, carbohydrate monomers and non-standard residues in protein, DNA, RNA chains that are outliers for geometric or electron-density-fit criteria:

Mol	Type	Chain	Res	Chirality	Geometry	Clashes	Electron density
5	P4G	A	702	-	-	-	X
6	42F	A	703	-	-	X	X

2 Entry composition

There are 10 unique types of molecules in this entry. The entry contains 7532 atoms, of which 18 are hydrogens and 0 are deuteriums.

In the tables below, the ZeroOcc column contains the number of atoms modelled with zero occupancy, the AltConf column contains the number of residues with at least one atom in alternate conformation and the Trace column contains the number of residues modelled with at most 2 atoms.

- Molecule 1 is a protein called Dopamine transporter-protein.

Mol	Chain	Residues	Atoms					ZeroOcc	AltConf	Trace
			Total	C	N	O	S			
1	A	532	4167	2796	642	710	19	0	0	0

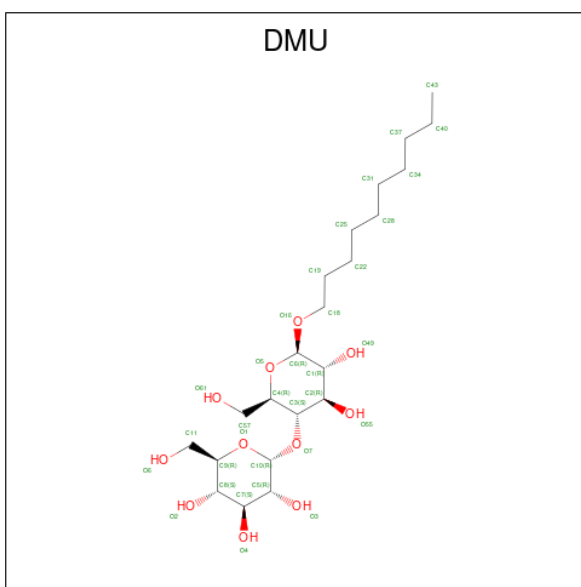
- Molecule 2 is a protein called ANTIBODY FRAGMENT HEAVY CHAIN-PROTEIN, 9D5-HEAVY CHAIN.

Mol	Chain	Residues	Atoms					ZeroOcc	AltConf	Trace
			Total	C	N	O	S			
2	L	214	1616	1004	267	337	8	0	0	0

- Molecule 3 is a protein called ANTIBODY FRAGMENT LIGHT CHAIN-PROTEIN, 9D5-LIGHT CHAIN.

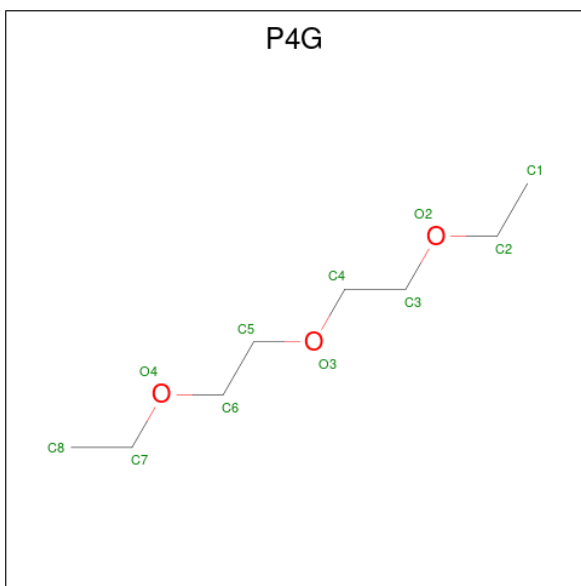
Mol	Chain	Residues	Atoms					ZeroOcc	AltConf	Trace
			Total	C	N	O	S			
3	H	215	1602	1011	269	314	8	0	0	0

- Molecule 4 is DECYL-BETA-D-MALTOPYRANOSIDE (three-letter code: DMU) (formula: C₂₂H₄₂O₁₁).



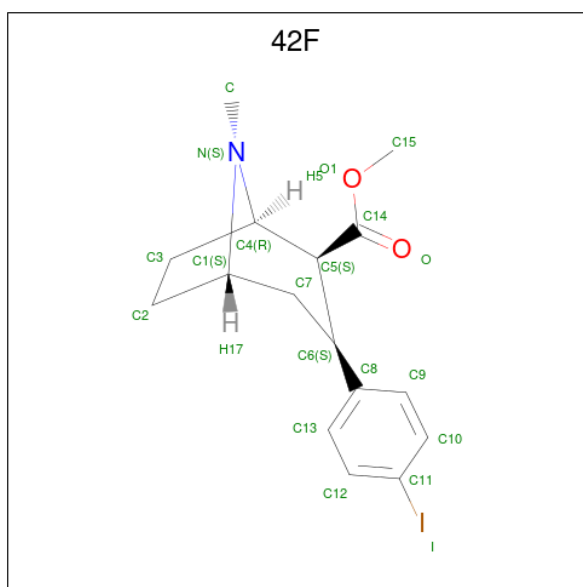
Mol	Chain	Residues	Atoms			ZeroOcc	AltConf
4	A	1	Total	C	O	0	0
			33	22	11		

- Molecule 5 is 1-ETHOXY-2-(2-ETHOXYETHOXY)ETHANE (three-letter code: P4G) (formula: $C_8H_{18}O_3$).



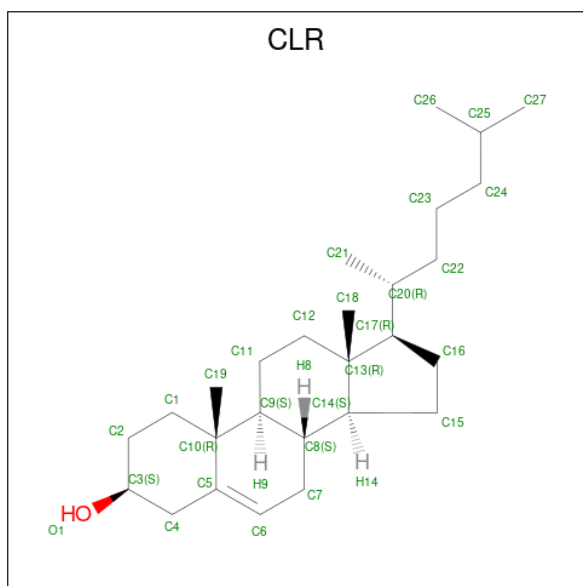
Mol	Chain	Residues	Atoms				ZeroOcc	AltConf
5	A	1	Total	C	H	O	0	0
			29	8	18	3		

- Molecule 6 is methyl (1R,2S,3S,5S)-3-(4-iodophenyl)-8-methyl-8-azabicyclo[3.2.1]octane-2-carboxylate (three-letter code: 42F) (formula: $C_{16}H_{20}INO_2$).



Mol	Chain	Residues	Atoms				ZeroOcc	AltConf	
6	A	1	Total	C	I	N	O	0	0
			20	16	1	1	2		

- Molecule 7 is CHOLESTEROL (three-letter code: CLR) (formula: $C_{27}H_{46}O$).



Mol	Chain	Residues	Atoms		ZeroOcc	AltConf	
7	A	1	Total	C	O	0	0
			28	27	1		
7	A	1	Total	C	O	0	0
			28	27	1		

- Molecule 8 is SODIUM ION (three-letter code: NA) (formula: Na).

Mol	Chain	Residues	Atoms	ZeroOcc	AltConf
8	A	2	Total Na 2 2	0	0

- Molecule 9 is CHLORIDE ION (three-letter code: CL) (formula: Cl).

Mol	Chain	Residues	Atoms	ZeroOcc	AltConf
9	A	1	Total Cl 1 1	0	0

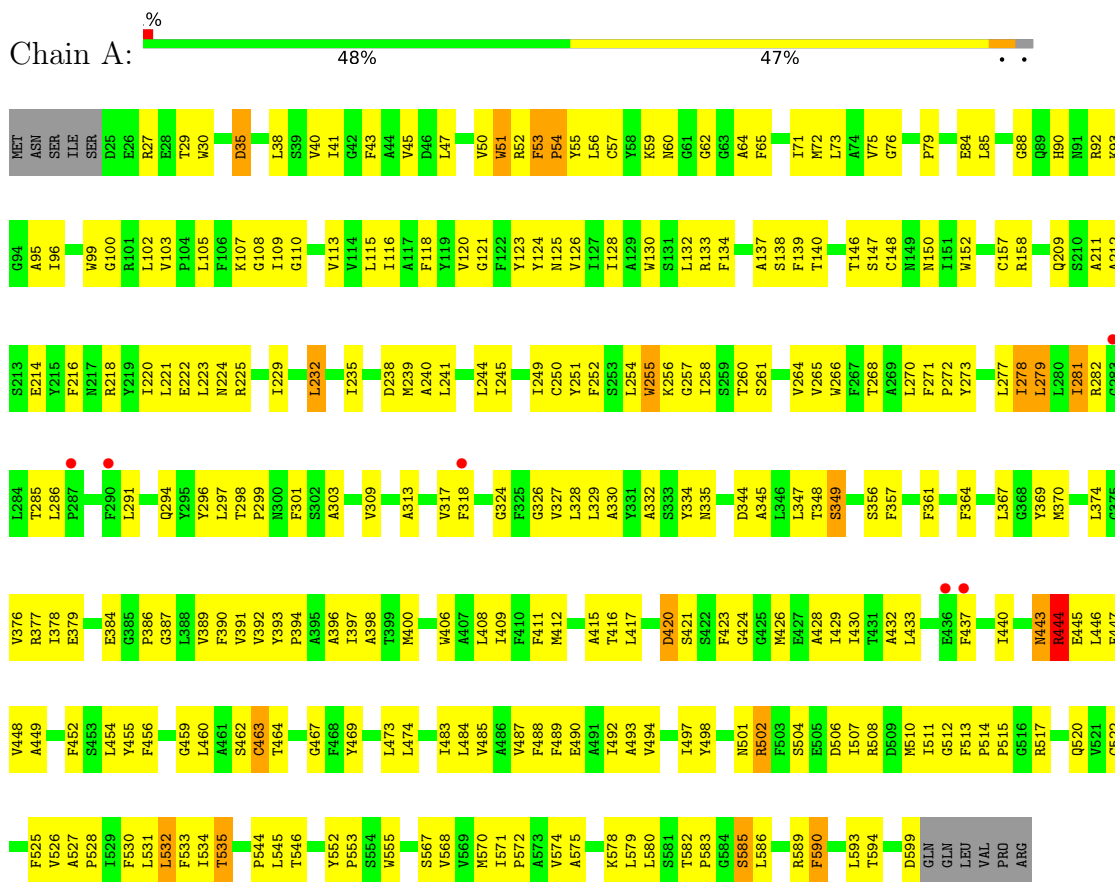
- Molecule 10 is water.

Mol	Chain	Residues	Atoms	ZeroOcc	AltConf
10	A	1	Total O 1 1	0	0
10	L	3	Total O 3 3	0	0
10	H	2	Total O 2 2	0	0

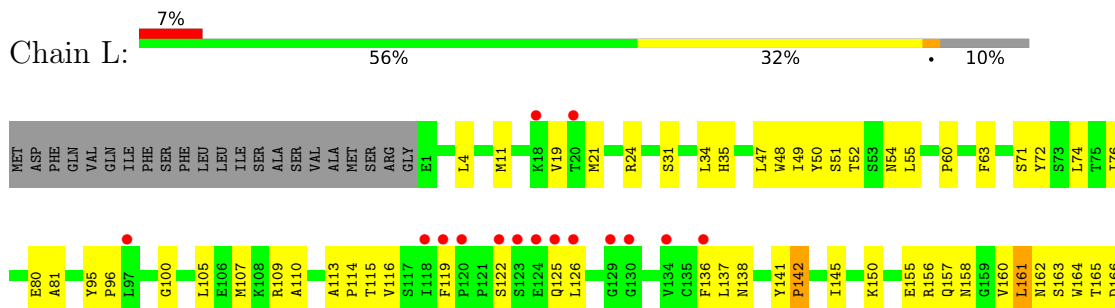
3 Residue-property plots

These plots are drawn for all protein, RNA, DNA and oligosaccharide chains in the entry. The first graphic for a chain summarises the proportions of the various outlier classes displayed in the second graphic. The second graphic shows the sequence view annotated by issues in geometry and electron density. Residues are color-coded according to the number of geometric quality criteria for which they contain at least one outlier: green = 0, yellow = 1, orange = 2 and red = 3 or more. A red dot above a residue indicates a poor fit to the electron density ($RSRZ > 2$). Stretches of 2 or more consecutive residues without any outlier are shown as a green connector. Residues present in the sample, but not in the model, are shown in grey.

- Molecule 1: Dopamine transporter-protein

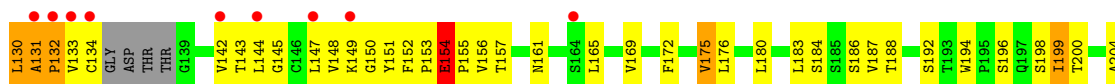
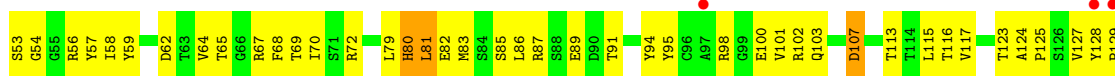


- Molecule 2: ANTIBODY FRAGMENT HEAVY CHAIN-PROTEIN, 9D5-HEAVY CHAIN





● Molecule 3: ANTIBODY FRAGMENT LIGHT CHAIN-PROTEIN, 9D5-LIGHT CHAIN



4 Data and refinement statistics

Property	Value	Source
Space group	P 21 21 21	Depositor
Cell constants a, b, c, α , β , γ	97.42Å 140.31Å 166.96Å 90.00° 90.00° 90.00°	Depositor
Resolution (Å)	48.32 – 3.27 48.32 – 3.27	Depositor EDS
% Data completeness (in resolution range)	89.1 (48.32-3.27) 89.3 (48.32-3.27)	Depositor EDS
R_{merge}	0.12	Depositor
R_{sym}	(Not available)	Depositor
$\langle I/\sigma(I) \rangle$ ¹	1.34 (at 3.25Å)	Xtrriage
Refinement program	PHENIX	Depositor
R, R_{free}	0.241 , 0.296 0.253 , 0.249	Depositor DCC
R_{free} test set	1597 reflections (4.97%)	wwPDB-VP
Wilson B-factor (Å ²)	113.8	Xtrriage
Anisotropy	0.317	Xtrriage
Bulk solvent k_{sol} (e/Å ³), B_{sol} (Å ²)	0.24 , 73.4	EDS
L-test for twinning ²	$\langle L \rangle = 0.51$, $\langle L^2 \rangle = 0.34$	Xtrriage
Estimated twinning fraction	No twinning to report.	Xtrriage
F_o, F_c correlation	0.90	EDS
Total number of atoms	7532	wwPDB-VP
Average B, all atoms (Å ²)	110.0	wwPDB-VP

Xtrriage's analysis on translational NCS is as follows: *The largest off-origin peak in the Patterson function is 5.66% of the height of the origin peak. No significant pseudotranslation is detected.*

¹Intensities estimated from amplitudes.

²Theoretical values of $\langle |L| \rangle$, $\langle L^2 \rangle$ for acentric reflections are 0.5, 0.333 respectively for untwinned datasets, and 0.375, 0.2 for perfectly twinned datasets.

5 Model quality [i](#)

5.1 Standard geometry [i](#)

Bond lengths and bond angles in the following residue types are not validated in this section: 42F, CLR, P4G, NA, CL, DMU

The Z score for a bond length (or angle) is the number of standard deviations the observed value is removed from the expected value. A bond length (or angle) with $|Z| > 5$ is considered an outlier worth inspection. RMSZ is the root-mean-square of all Z scores of the bond lengths (or angles).

Mol	Chain	Bond lengths		Bond angles	
		RMSZ	# Z >5	RMSZ	# Z >5
1	A	0.35	1/4308 (0.0%)	0.50	1/5891 (0.0%)
2	L	0.45	2/1654 (0.1%)	0.54	1/2251 (0.0%)
3	H	0.37	0/1640	0.67	3/2235 (0.1%)
All	All	0.38	3/7602 (0.0%)	0.55	5/10377 (0.0%)

Chiral center outliers are detected by calculating the chiral volume of a chiral center and verifying if the center is modelled as a planar moiety or with the opposite hand. A planarity outlier is detected by checking planarity of atoms in a peptide group, atoms in a mainchain group or atoms of a sidechain that are expected to be planar.

Mol	Chain	#Chirality outliers	#Planarity outliers
1	A	0	1
3	H	0	1
All	All	0	2

All (3) bond length outliers are listed below:

Mol	Chain	Res	Type	Atoms	Z	Observed(Å)	Ideal(Å)
2	L	96	PRO	N-CD	5.67	1.55	1.47
2	L	142	PRO	N-CD	5.56	1.55	1.47
1	A	54	PRO	N-CD	5.12	1.55	1.47

All (5) bond angle outliers are listed below:

Mol	Chain	Res	Type	Atoms	Z	Observed(°)	Ideal(°)
3	H	154	GLU	C-N-CD	-14.34	89.06	120.60
3	H	131	ALA	C-N-CD	-9.07	100.65	120.60
3	H	198	SER	N-CA-CB	-7.30	99.55	110.50
2	L	187	TYR	CB-CA-C	-6.29	97.83	110.40
1	A	53	PHE	C-N-CD	5.70	140.37	128.40

There are no chirality outliers.

All (2) planarity outliers are listed below:

Mol	Chain	Res	Type	Group
1	A	444	ARG	Peptide
3	H	98	ARG	Peptide

5.2 Too-close contacts [i](#)

In the following table, the Non-H and H(model) columns list the number of non-hydrogen atoms and hydrogen atoms in the chain respectively. The H(added) column lists the number of hydrogen atoms added and optimized by MolProbity. The Clashes column lists the number of clashes within the asymmetric unit, whereas Symm-Clashes lists symmetry-related clashes.

Mol	Chain	Non-H	H(model)	H(added)	Clashes	Symm-Clashes
1	A	4167	0	4048	308	0
2	L	1616	0	1515	86	0
3	H	1602	0	1541	167	0
4	A	33	0	42	1	0
5	A	11	18	18	0	0
6	A	20	0	20	17	0
7	A	56	0	92	5	0
8	A	2	0	0	0	0
9	A	1	0	0	0	0
10	A	1	0	0	0	0
10	H	2	0	0	1	0
10	L	3	0	0	0	0
All	All	7514	18	7276	530	0

The all-atom clashscore is defined as the number of clashes found per 1000 atoms (including hydrogen atoms). The all-atom clashscore for this structure is 36.

All (530) close contacts within the same asymmetric unit are listed below, sorted by their clash magnitude.

Atom-1	Atom-2	Interatomic distance (Å)	Clash overlap (Å)
1:A:124:TYR:CD2	6:A:703:42F:H3	1.35	1.56
3:H:194:TRP:CD1	3:H:199:ILE:HD11	1.42	1.49
1:A:53:PHE:CD2	1:A:356:SER:HB3	1.51	1.44
1:A:124:TYR:HD2	6:A:703:42F:C15	1.29	1.42
3:H:194:TRP:CD1	3:H:199:ILE:CD1	2.05	1.38
1:A:53:PHE:CD2	1:A:356:SER:CB	2.21	1.23
2:L:161:LEU:HD11	3:H:175:VAL:CG2	1.71	1.20

Continued on next page...

Continued from previous page...

Atom-1	Atom-2	Interatomic distance (Å)	Clash overlap (Å)
2:L:187:TYR:O	2:L:187:TYR:CD1	1.94	1.20
1:A:124:TYR:CD2	6:A:703:42F:C15	2.11	1.19
1:A:124:TYR:CE2	6:A:703:42F:O	1.95	1.18
3:H:192:SER:O	3:H:196:SER:OG	1.71	1.07
3:H:131:ALA:HB2	3:H:216:ILE:CG2	1.85	1.06
1:A:256:LYS:HA	1:A:444:ARG:NH2	1.73	1.03
3:H:217:GLU:HB2	3:H:218:PRO:HD2	1.39	1.03
1:A:256:LYS:HA	1:A:444:ARG:HH22	1.18	1.01
1:A:53:PHE:HE2	1:A:357:PHE:N	1.60	0.99
2:L:161:LEU:CD1	3:H:175:VAL:HG23	1.91	0.99
2:L:186:GLU:O	2:L:187:TYR:HB3	1.62	0.99
3:H:157:THR:HB	3:H:204:ALA:HB3	1.45	0.97
2:L:161:LEU:HD11	3:H:175:VAL:HG23	0.96	0.93
1:A:124:TYR:HE2	6:A:703:42F:O	1.39	0.93
3:H:39:GLN:HB2	3:H:45:LEU:HD23	1.52	0.91
3:H:194:TRP:HD1	3:H:199:ILE:HD11	1.11	0.91
2:L:141:TYR:CE1	2:L:142:PRO:HB3	2.05	0.91
3:H:194:TRP:CD1	3:H:199:ILE:HD12	2.05	0.91
1:A:484:LEU:HD13	1:A:535:THR:HG23	1.52	0.91
1:A:53:PHE:HD2	1:A:356:SER:CB	1.67	0.90
1:A:115:LEU:HD11	1:A:567:SER:HA	1.53	0.90
1:A:53:PHE:CE2	1:A:357:PHE:N	2.39	0.90
3:H:81:LEU:HD23	3:H:82:GLU:H	1.35	0.89
3:H:131:ALA:HB2	3:H:216:ILE:HG21	1.51	0.88
1:A:52:ARG:O	1:A:56:LEU:HG	1.75	0.86
3:H:194:TRP:CG	3:H:199:ILE:HD11	2.10	0.86
2:L:161:LEU:CD1	3:H:175:VAL:CG2	2.52	0.85
3:H:154:GLU:OE2	3:H:156:VAL:HG13	1.76	0.85
1:A:364:PHE:HA	1:A:367:LEU:HB2	1.59	0.84
3:H:169:VAL:HG22	3:H:187:VAL:HG12	1.59	0.83
3:H:40:SER:HB2	3:H:41:PRO:HD2	1.59	0.83
1:A:43:PHE:HA	1:A:421:SER:HA	1.58	0.83
2:L:187:TYR:O	2:L:187:TYR:CG	2.30	0.83
1:A:50:VAL:O	1:A:54:PRO:CD	2.27	0.83
3:H:64:VAL:HG13	3:H:68:PHE:HB2	1.60	0.83
3:H:19:LYS:HG2	3:H:81:LEU:C	1.99	0.82
1:A:53:PHE:HD2	1:A:356:SER:HB3	1.00	0.82
1:A:47:LEU:HD12	1:A:47:LEU:H	1.44	0.82
3:H:19:LYS:HG2	3:H:81:LEU:O	1.80	0.81
2:L:34:LEU:HD22	2:L:72:TYR:CD2	2.16	0.81
1:A:124:TYR:CE2	6:A:703:42F:H3	2.14	0.79

Continued on next page...

Continued from previous page...

Atom-1	Atom-2	Interatomic distance (Å)	Clash overlap (Å)
1:A:124:TYR:CD2	6:A:703:42F:H2	2.17	0.79
3:H:69:THR:O	3:H:82:GLU:N	2.16	0.78
1:A:103:VAL:HG11	1:A:497:ILE:HG21	1.66	0.78
1:A:232:LEU:HB3	1:A:464:THR:HG21	1.66	0.78
3:H:7:SER:O	3:H:20:LEU:HB3	1.84	0.78
3:H:125:PRO:HB3	3:H:151:TYR:HB3	1.65	0.78
1:A:393:TYR:HB3	1:A:394:PRO:HD3	1.65	0.78
3:H:91:THR:HG23	3:H:116:THR:HA	1.66	0.77
3:H:211:LYS:NZ	10:H:301:HOH:O	2.17	0.77
1:A:489:PHE:CD2	1:A:571:ILE:HG21	2.21	0.76
3:H:68:PHE:CE2	3:H:83:MET:HG2	2.21	0.75
1:A:84:GLU:HG2	1:A:328:LEU:HB2	1.67	0.75
3:H:51:ILE:CD1	3:H:72:ARG:HB2	2.17	0.75
1:A:254:LEU:O	1:A:444:ARG:NH1	2.19	0.75
1:A:252:PHE:HA	1:A:255:TRP:HB3	1.69	0.74
3:H:217:GLU:HB2	3:H:218:PRO:CD	2.18	0.74
1:A:303:ALA:HB1	1:A:309:VAL:HG21	1.71	0.73
1:A:53:PHE:CD2	1:A:356:SER:HB2	2.23	0.72
3:H:51:ILE:HD13	3:H:72:ARG:HB2	1.69	0.72
3:H:64:VAL:CG1	3:H:68:PHE:HB2	2.18	0.72
2:L:116:VAL:HG22	2:L:137:LEU:HG	1.72	0.71
1:A:286:LEU:HD11	1:A:400:MET:CE	2.20	0.71
2:L:214:GLU:HB3	3:H:134:CYS:SG	2.30	0.71
3:H:154:GLU:OE2	3:H:156:VAL:N	2.23	0.71
1:A:520:GLN:N	1:A:520:GLN:OE1	2.24	0.70
3:H:19:LYS:HD3	3:H:81:LEU:HB3	1.74	0.70
1:A:72:MET:CE	1:A:72:MET:HA	2.21	0.70
1:A:40:VAL:HG12	1:A:348:THR:HG21	1.74	0.69
1:A:522:CYS:HA	1:A:526:VAL:HB	1.74	0.69
2:L:95:TYR:CZ	3:H:59:TYR:CD2	2.81	0.69
1:A:508:ARG:NE	3:H:100:GLU:O	2.25	0.69
3:H:194:TRP:HD1	3:H:199:ILE:CD1	1.73	0.68
2:L:164:TRP:CE2	2:L:176:MET:HG3	2.28	0.68
1:A:489:PHE:CE2	1:A:571:ILE:HG21	2.28	0.68
3:H:19:LYS:HG3	3:H:20:LEU:N	2.08	0.68
1:A:251:TYR:O	1:A:255:TRP:N	2.27	0.68
1:A:75:VAL:O	1:A:79:PRO:HG2	1.93	0.68
1:A:517:ARG:HA	1:A:520:GLN:HE22	1.57	0.68
1:A:281:ILE:O	1:A:285:THR:HG23	1.93	0.68
2:L:109:ARG:HG2	2:L:110:ALA:N	2.07	0.68
3:H:3:GLN:O	3:H:4:LEU:HD23	1.93	0.68

Continued on next page...

Continued from previous page...

Atom-1	Atom-2	Interatomic distance (Å)	Clash overlap (Å)
3:H:5:VAL:HG23	3:H:23:ALA:HB3	1.76	0.68
1:A:138:SER:HB2	1:A:408:LEU:HD23	1.76	0.67
1:A:138:SER:HB2	1:A:408:LEU:CD2	2.25	0.67
1:A:517:ARG:HA	1:A:520:GLN:NE2	2.10	0.67
1:A:271:PHE:CE2	1:A:412:MET:HG3	2.31	0.66
1:A:502:ARG:NH2	3:H:54:GLY:O	2.28	0.66
1:A:553:PRO:HB2	1:A:555:TRP:CD1	2.31	0.66
2:L:31:SER:O	2:L:52:THR:OG1	2.14	0.66
2:L:214:GLU:CB	3:H:134:CYS:SG	2.84	0.66
1:A:278:ILE:HD11	1:A:409:ILE:CD1	2.26	0.65
3:H:30:SER:O	3:H:53:SER:HB2	1.96	0.65
1:A:579:LEU:HD12	1:A:580:LEU:N	2.11	0.65
2:L:34:LEU:HG	2:L:35:HIS:N	2.11	0.65
1:A:53:PHE:CD2	1:A:356:SER:C	2.69	0.65
1:A:72:MET:HA	1:A:72:MET:HE2	1.78	0.65
1:A:258:ILE:HD13	1:A:334:TYR:CD2	2.30	0.65
1:A:53:PHE:CE2	1:A:356:SER:HB2	2.31	0.64
3:H:19:LYS:CD	3:H:81:LEU:HB3	2.27	0.64
3:H:169:VAL:HG22	3:H:187:VAL:CG1	2.28	0.64
1:A:578:LYS:O	1:A:582:THR:HG23	1.97	0.64
1:A:444:ARG:O	1:A:447:PHE:N	2.27	0.64
3:H:183:LEU:HD23	3:H:184:SER:N	2.12	0.64
1:A:493:ALA:HA	1:A:497:ILE:HG12	1.80	0.64
1:A:332:ALA:O	1:A:335:ASN:HB2	1.97	0.64
1:A:586:LEU:HA	1:A:589:ARG:HG2	1.80	0.63
2:L:141:TYR:CD1	2:L:142:PRO:HB3	2.33	0.63
1:A:130:TRP:HD1	1:A:239:MET:HE1	1.63	0.63
3:H:217:GLU:CB	3:H:218:PRO:HD2	2.22	0.63
1:A:40:VAL:CG1	1:A:348:THR:HG21	2.28	0.63
1:A:157:CYS:HB2	1:A:214:GLU:OE1	1.98	0.63
2:L:187:TYR:CD1	2:L:187:TYR:C	2.72	0.63
1:A:65:PHE:CE1	1:A:313:ALA:HB2	2.34	0.63
1:A:120:VAL:HG11	6:A:703:42F:H2	1.81	0.62
2:L:137:LEU:HD23	2:L:145:ILE:HD11	1.81	0.62
1:A:102:LEU:HG	1:A:498:TYR:CD2	2.34	0.62
3:H:19:LYS:CE	3:H:81:LEU:HB3	2.29	0.62
3:H:143:THR:OG1	3:H:188:THR:HG22	1.98	0.62
1:A:53:PHE:CE2	1:A:356:SER:CB	2.78	0.62
1:A:286:LEU:HD11	1:A:400:MET:HE1	1.80	0.62
3:H:200:THR:HA	3:H:214:LYS:O	1.98	0.62
1:A:252:PHE:HA	1:A:255:TRP:CB	2.29	0.62

Continued on next page...

Continued from previous page...

Atom-1	Atom-2	Interatomic distance (Å)	Clash overlap (Å)
1:A:484:LEU:HD23	1:A:531:LEU:HD22	1.81	0.62
2:L:161:LEU:HG	3:H:175:VAL:HG21	1.82	0.62
3:H:87:ARG:HD3	3:H:89:GLU:OE2	2.00	0.62
1:A:124:TYR:HD2	6:A:703:42F:H3	0.52	0.61
1:A:590:PHE:O	1:A:594:THR:HG23	1.99	0.61
3:H:81:LEU:HD23	3:H:82:GLU:N	2.13	0.61
1:A:393:TYR:HE1	1:A:397:ILE:HD11	1.65	0.61
2:L:80:GLU:O	2:L:107:MET:HE3	2.00	0.61
1:A:50:VAL:O	1:A:54:PRO:CG	2.49	0.61
1:A:443:ASN:HB3	1:A:445:GLU:HB2	1.83	0.61
3:H:42:GLU:OE1	3:H:44:ARG:NH2	2.30	0.61
1:A:134:PHE:HB3	1:A:411:PHE:CE2	2.35	0.61
3:H:51:ILE:HA	3:H:58:ILE:HD13	1.83	0.61
1:A:88:GLY:HA3	1:A:332:ALA:HB3	1.82	0.60
1:A:299:PRO:HB3	1:A:301:PHE:HE1	1.65	0.60
1:A:502:ARG:HE	3:H:56:ARG:CD	2.13	0.60
6:A:703:42F:O	6:A:703:42F:H18	2.01	0.60
1:A:123:TYR:HB3	1:A:474:LEU:HD12	1.83	0.60
1:A:599:ASP:OD2	3:H:56:ARG:NH1	2.34	0.60
1:A:437:PHE:O	1:A:440:ILE:HG12	2.02	0.60
1:A:109:ILE:HA	1:A:571:ILE:CD1	2.32	0.60
1:A:502:ARG:HH21	3:H:56:ARG:HG2	1.67	0.60
2:L:50:TYR:O	2:L:51:SER:HB3	2.02	0.59
1:A:232:LEU:HB3	1:A:464:THR:CG2	2.33	0.59
1:A:327:VAL:HG22	1:A:428:ALA:HB2	1.84	0.59
3:H:115:LEU:HD12	3:H:116:THR:N	2.16	0.59
1:A:212:ALA:O	1:A:391:VAL:HG22	2.02	0.59
2:L:183:THR:HG22	2:L:184:LYS:H	1.68	0.59
3:H:131:ALA:HB2	3:H:216:ILE:HG22	1.79	0.59
1:A:50:VAL:O	1:A:54:PRO:HD3	2.02	0.59
2:L:141:TYR:CD1	2:L:142:PRO:CA	2.85	0.59
1:A:125:ASN:ND2	6:A:703:42F:I	3.06	0.59
7:A:704:CLR:H212	7:A:704:CLR:H121	1.85	0.59
1:A:377:ARG:NH1	1:A:379:GLU:OE1	2.35	0.58
1:A:444:ARG:HB3	1:A:444:ARG:CZ	2.32	0.58
1:A:460:LEU:HA	1:A:463:CYS:HB2	1.84	0.58
2:L:150:LYS:HB3	2:L:194:THR:OG1	2.02	0.58
2:L:161:LEU:CG	3:H:175:VAL:HG21	2.33	0.58
2:L:119:PHE:HZ	3:H:143:THR:HG22	1.68	0.58
2:L:196:GLU:HG2	2:L:207:VAL:HG22	1.86	0.58
1:A:261:SER:O	1:A:265:VAL:HG13	2.02	0.58

Continued on next page...

Continued from previous page...

Atom-1	Atom-2	Interatomic distance (Å)	Clash overlap (Å)
1:A:53:PHE:HD2	1:A:356:SER:CA	2.17	0.58
1:A:370:MET:SD	1:A:396:ALA:HB2	2.44	0.58
1:A:65:PHE:HE1	1:A:313:ALA:HB2	1.69	0.58
2:L:191:ASN:OD1	2:L:212:ARG:N	2.36	0.58
1:A:244:LEU:HB2	1:A:456:PHE:CE2	2.38	0.58
1:A:278:ILE:HD11	1:A:409:ILE:HD13	1.84	0.58
3:H:39:GLN:HB2	3:H:45:LEU:CD2	2.30	0.58
2:L:34:LEU:HG	2:L:35:HIS:H	1.68	0.58
2:L:165:THR:HG23	3:H:172:PHE:CD1	2.39	0.58
3:H:133:VAL:O	3:H:134:CYS:HB2	2.02	0.58
2:L:141:TYR:CG	2:L:142:PRO:HA	2.39	0.57
1:A:235:ILE:HD13	1:A:460:LEU:HB3	1.86	0.57
2:L:19:VAL:HG22	2:L:76:ILE:HB	1.86	0.57
3:H:131:ALA:CB	3:H:216:ILE:CG2	2.73	0.57
3:H:18:LEU:O	3:H:83:MET:HB2	2.05	0.57
1:A:116:ILE:HG21	1:A:483:ILE:HD13	1.85	0.57
1:A:327:VAL:HA	1:A:428:ALA:HB2	1.85	0.57
1:A:282:ARG:HD2	1:A:406:TRP:CZ2	2.40	0.57
1:A:90:HIS:O	1:A:92:ARG:HG2	2.05	0.57
1:A:251:TYR:HA	1:A:452:PHE:HE2	1.69	0.57
1:A:50:VAL:O	1:A:54:PRO:HG2	2.05	0.57
1:A:96:ILE:HA	1:A:110:GLY:HA3	1.86	0.57
1:A:570:MET:O	1:A:574:VAL:HG23	2.04	0.57
1:A:92:ARG:NH2	1:A:335:ASN:O	2.38	0.57
1:A:109:ILE:HD11	1:A:489:PHE:HB3	1.86	0.57
2:L:51:SER:OG	2:L:52:THR:N	2.28	0.57
1:A:444:ARG:O	1:A:447:PHE:HB3	2.05	0.56
1:A:73:LEU:HD12	1:A:317:VAL:HG13	1.87	0.56
1:A:38:LEU:HB3	1:A:265:VAL:HG23	1.87	0.56
2:L:51:SER:CB	2:L:54:ASN:HD22	2.18	0.56
1:A:51:TRP:O	1:A:384:GLU:HA	2.05	0.56
1:A:255:TRP:C	1:A:444:ARG:HH12	2.08	0.56
1:A:279:LEU:HD21	1:A:409:ILE:HD11	1.87	0.56
1:A:464:THR:O	1:A:467:GLY:N	2.39	0.56
1:A:55:TYR:CE1	1:A:59:LYS:HD3	2.41	0.56
1:A:585:SER:O	1:A:589:ARG:HG2	2.06	0.56
3:H:20:LEU:HD22	3:H:113:THR:CG2	2.35	0.56
2:L:183:THR:HB	2:L:186:GLU:HG3	1.87	0.56
2:L:168:ASP:O	2:L:172:SER:HA	2.05	0.56
1:A:244:LEU:HB2	1:A:456:PHE:HE2	1.71	0.55
1:A:502:ARG:HH21	3:H:56:ARG:CG	2.19	0.55

Continued on next page...

Continued from previous page...

Atom-1	Atom-2	Interatomic distance (Å)	Clash overlap (Å)
3:H:216:ILE:N	3:H:216:ILE:HD12	2.21	0.55
1:A:299:PRO:HB3	1:A:301:PHE:CE1	2.41	0.55
1:A:53:PHE:CE2	1:A:357:PHE:CA	2.90	0.55
1:A:53:PHE:HD2	1:A:356:SER:C	2.10	0.55
1:A:118:PHE:CA	1:A:429:ILE:HD11	2.36	0.55
1:A:271:PHE:HB3	1:A:272:PRO:HD3	1.89	0.55
1:A:370:MET:HG2	1:A:374:LEU:HD12	1.89	0.55
3:H:132:PRO:HD2	3:H:144:LEU:CD2	2.37	0.55
1:A:57:CYS:HG	1:A:65:PHE:HD2	1.53	0.55
3:H:70:ILE:HA	3:H:81:LEU:HA	1.88	0.55
3:H:5:VAL:CG2	3:H:23:ALA:HB3	2.36	0.55
3:H:6:GLU:N	3:H:6:GLU:OE1	2.40	0.55
3:H:152:PHE:CE1	3:H:153:PRO:HB3	2.42	0.55
1:A:56:LEU:O	1:A:60:ASN:HB2	2.06	0.54
1:A:116:ILE:O	1:A:120:VAL:HG23	2.06	0.54
2:L:186:GLU:O	2:L:187:TYR:CB	2.39	0.54
1:A:64:ALA:HB2	1:A:301:PHE:CE1	2.42	0.54
6:A:703:42F:C13	6:A:703:42F:C14	2.85	0.54
3:H:107:ASP:N	3:H:107:ASP:OD1	2.37	0.54
1:A:318:PHE:CE1	1:A:531:LEU:HD21	2.42	0.54
2:L:161:LEU:CD1	3:H:175:VAL:HG21	2.34	0.54
1:A:109:ILE:HA	1:A:571:ILE:HD11	1.90	0.54
1:A:124:TYR:CE2	6:A:703:42F:H18	2.43	0.54
3:H:169:VAL:HG13	3:H:187:VAL:HG12	1.90	0.54
1:A:294:GLN:HG2	1:A:298:THR:OG1	2.07	0.54
3:H:18:LEU:HD12	3:H:19:LYS:H	1.72	0.54
1:A:57:CYS:O	1:A:62:GLY:N	2.36	0.54
1:A:257:GLY:H	1:A:444:ARG:NH2	2.06	0.54
2:L:113:ALA:HB1	2:L:114:PRO:HD2	1.90	0.54
2:L:145:ILE:HG22	2:L:164:TRP:HE1	1.72	0.54
1:A:286:LEU:HD11	1:A:400:MET:HE2	1.88	0.54
1:A:297:LEU:HD11	1:A:361:PHE:CZ	2.43	0.54
1:A:488:PHE:O	1:A:492:ILE:HG12	2.08	0.54
3:H:149:LYS:HG3	3:H:150:GLY:N	2.23	0.54
1:A:347:LEU:HD12	1:A:347:LEU:O	2.08	0.53
1:A:570:MET:CE	1:A:570:MET:HA	2.38	0.53
2:L:81:ALA:HA	2:L:107:MET:CE	2.38	0.53
1:A:128:ILE:O	1:A:132:LEU:HG	2.09	0.53
1:A:222:GLU:HB3	1:A:225:ARG:HD2	1.90	0.53
1:A:514:PRO:HG3	3:H:100:GLU:HG2	1.91	0.53
1:A:579:LEU:HD22	1:A:590:PHE:CE1	2.44	0.53

Continued on next page...

Continued from previous page...

Atom-1	Atom-2	Interatomic distance (Å)	Clash overlap (Å)
2:L:137:LEU:HD22	2:L:176:MET:CE	2.39	0.53
1:A:484:LEU:HD13	1:A:535:THR:CG2	2.32	0.53
1:A:493:ALA:HA	1:A:497:ILE:CG1	2.39	0.53
2:L:162:ASN:HA	2:L:177:SER:O	2.09	0.53
1:A:128:ILE:HG23	1:A:415:ALA:HA	1.91	0.53
2:L:183:THR:HG22	2:L:184:LYS:N	2.23	0.53
1:A:120:VAL:CG1	6:A:703:42F:H2	2.39	0.53
3:H:19:LYS:HE3	3:H:20:LEU:HD12	1.89	0.53
1:A:53:PHE:CE2	1:A:356:SER:C	2.82	0.53
1:A:387:GLY:O	1:A:391:VAL:HB	2.09	0.53
3:H:127:VAL:HG12	3:H:214:LYS:HZ1	1.74	0.53
1:A:41:ILE:HD13	1:A:348:THR:HG23	1.90	0.52
1:A:582:THR:OG1	1:A:589:ARG:HB2	2.09	0.52
1:A:513:PHE:HB3	3:H:101:VAL:HG13	1.91	0.52
1:A:532:LEU:HD23	1:A:533:PHE:N	2.25	0.52
3:H:20:LEU:HD22	3:H:113:THR:HG21	1.92	0.52
1:A:502:ARG:HE	3:H:56:ARG:HD3	1.73	0.52
2:L:150:LYS:HG3	2:L:155:GLU:CB	2.38	0.52
3:H:81:LEU:O	3:H:82:GLU:HG2	2.10	0.52
1:A:53:PHE:HE2	1:A:357:PHE:CA	2.22	0.52
1:A:291:LEU:HD23	1:A:291:LEU:C	2.30	0.52
2:L:63:PHE:CE2	2:L:76:ILE:HG12	2.45	0.52
1:A:278:ILE:HD11	1:A:409:ILE:HD12	1.92	0.51
1:A:53:PHE:CG	1:A:356:SER:HB3	2.31	0.51
1:A:29:THR:HG22	1:A:30:TRP:N	2.26	0.51
1:A:118:PHE:HA	1:A:429:ILE:HD11	1.90	0.51
1:A:96:ILE:O	1:A:100:GLY:N	2.43	0.51
1:A:370:MET:O	1:A:376:VAL:HG12	2.11	0.51
1:A:512:GLY:HA2	3:H:102:ARG:HD2	1.92	0.51
3:H:124:ALA:HB2	3:H:208:SER:HB2	1.92	0.51
3:H:194:TRP:NE1	3:H:199:ILE:HD12	2.25	0.51
1:A:53:PHE:HE2	1:A:357:PHE:H	1.51	0.51
1:A:152:TRP:O	1:A:218:ARG:HD3	2.11	0.51
1:A:498:TYR:OH	3:H:56:ARG:NH2	2.43	0.51
1:A:513:PHE:CB	3:H:101:VAL:HG13	2.40	0.51
3:H:62:ASP:HA	3:H:65:THR:HG22	1.91	0.51
1:A:216:PHE:O	1:A:221:LEU:HD13	2.10	0.51
1:A:327:VAL:HG22	1:A:424:GLY:O	2.11	0.51
3:H:194:TRP:NE1	3:H:199:ILE:CD1	2.66	0.51
3:H:21:SER:OG	3:H:80:HIS:HB3	2.11	0.50
3:H:34:MET:CB	3:H:79:LEU:HD22	2.41	0.50

Continued on next page...

Continued from previous page...

Atom-1	Atom-2	Interatomic distance (Å)	Clash overlap (Å)
1:A:502:ARG:CZ	3:H:54:GLY:HA3	2.41	0.50
2:L:35:HIS:HE1	3:H:103:GLN:O	1.94	0.50
2:L:141:TYR:CD1	2:L:142:PRO:HA	2.47	0.50
2:L:194:THR:HG22	2:L:209:SER:OG	2.10	0.50
1:A:501:ASN:OD1	1:A:502:ARG:N	2.45	0.50
1:A:579:LEU:HD22	1:A:590:PHE:HE1	1.76	0.50
1:A:38:LEU:HD13	1:A:266:TRP:HA	1.94	0.50
1:A:75:VAL:HG23	1:A:76:GLY:N	2.26	0.50
1:A:571:ILE:HB	1:A:572:PRO:HD3	1.92	0.50
1:A:148:CYS:SG	1:A:211:ALA:HB2	2.51	0.50
1:A:232:LEU:O	1:A:464:THR:HG22	2.12	0.50
1:A:327:VAL:O	1:A:330:ALA:N	2.44	0.50
2:L:214:GLU:HB2	3:H:134:CYS:SG	2.50	0.50
3:H:19:LYS:CE	3:H:81:LEU:CB	2.90	0.50
3:H:131:ALA:CB	3:H:216:ILE:HG22	2.41	0.50
1:A:286:LEU:HD13	1:A:369:TYR:CG	2.47	0.50
3:H:83:MET:HB3	3:H:86:LEU:HD21	1.94	0.50
3:H:125:PRO:CB	3:H:151:TYR:HB3	2.40	0.50
1:A:511:ILE:HD12	1:A:513:PHE:CZ	2.46	0.49
2:L:137:LEU:HD22	2:L:176:MET:HE3	1.94	0.49
1:A:220:ILE:HG22	1:A:221:LEU:HD12	1.95	0.49
3:H:52:SER:O	3:H:72:ARG:NH1	2.44	0.49
3:H:130:LEU:HD21	3:H:147:LEU:N	2.26	0.49
1:A:282:ARG:NH2	1:A:286:LEU:HD23	2.27	0.49
1:A:507:ILE:HA	1:A:510:MET:HE2	1.94	0.49
7:A:705:CLR:H121	7:A:705:CLR:H212	1.94	0.49
1:A:446:LEU:HA	1:A:449:ALA:HB3	1.94	0.49
1:A:105:LEU:HD13	1:A:593:LEU:HD12	1.94	0.49
1:A:266:TRP:O	1:A:270:LEU:HD12	2.12	0.49
2:L:137:LEU:HD23	2:L:145:ILE:CD1	2.42	0.49
1:A:574:VAL:O	1:A:578:LYS:HG3	2.12	0.49
2:L:161:LEU:CG	3:H:175:VAL:CG2	2.90	0.49
1:A:99:TRP:HH2	1:A:494:VAL:HG23	1.78	0.49
1:A:511:ILE:HD12	1:A:513:PHE:CE1	2.48	0.49
2:L:187:TYR:HD1	2:L:188:GLU:OE1	1.96	0.49
3:H:16:GLY:O	3:H:86:LEU:HG	2.13	0.49
1:A:344:ASP:O	1:A:348:THR:OG1	2.27	0.49
2:L:49:ILE:HD12	2:L:74:LEU:HD12	1.94	0.49
3:H:210:THR:C	3:H:211:LYS:HD2	2.33	0.49
1:A:391:VAL:HG12	1:A:392:VAL:N	2.27	0.49
1:A:223:LEU:HD11	1:A:469:TYR:CE2	2.48	0.48

Continued on next page...

Continued from previous page...

Atom-1	Atom-2	Interatomic distance (Å)	Clash overlap (Å)
2:L:187:TYR:O	2:L:187:TYR:HD1	1.82	0.48
1:A:393:TYR:CE1	1:A:397:ILE:HD11	2.47	0.48
1:A:508:ARG:O	1:A:508:ARG:HD3	2.13	0.48
3:H:69:THR:O	3:H:81:LEU:HD23	2.12	0.48
1:A:115:LEU:HA	1:A:118:PHE:HB3	1.95	0.48
1:A:124:TYR:CD1	1:A:124:TYR:C	2.85	0.48
1:A:345:ALA:O	1:A:349:SER:OG	2.31	0.48
2:L:24:ARG:NH1	2:L:71:SER:HB2	2.28	0.48
3:H:169:VAL:CG2	3:H:187:VAL:HG12	2.38	0.48
1:A:45:VAL:HG12	1:A:417:LEU:CD2	2.44	0.48
1:A:455:TYR:O	1:A:459:GLY:N	2.45	0.48
3:H:37:VAL:O	3:H:95:TYR:HB2	2.14	0.48
1:A:105:LEU:HB2	1:A:593:LEU:HB3	1.95	0.48
1:A:579:LEU:O	1:A:589:ARG:HD3	2.14	0.48
1:A:586:LEU:HA	1:A:589:ARG:CG	2.41	0.48
3:H:154:GLU:CD	3:H:155:PRO:HA	2.34	0.48
2:L:136:PHE:C	2:L:137:LEU:HD12	2.34	0.48
3:H:125:PRO:HD3	3:H:205:HIS:ND1	2.28	0.48
1:A:27:ARG:NH1	1:A:93:LYS:HA	2.29	0.48
1:A:378:ILE:HG23	1:A:379:GLU:N	2.29	0.48
1:A:433:LEU:HB3	1:A:440:ILE:HD11	1.95	0.48
1:A:527:ALA:HB3	1:A:528:PRO:CD	2.44	0.48
2:L:197:ALA:HB3	2:L:206:ILE:HB	1.96	0.48
1:A:99:TRP:CH2	1:A:494:VAL:HG23	2.48	0.48
1:A:126:VAL:HG21	1:A:462:SER:OG	2.13	0.48
1:A:245:ILE:O	1:A:249:ILE:HG13	2.14	0.48
2:L:51:SER:HB3	2:L:54:ASN:HD22	1.77	0.48
2:L:160:VAL:HA	2:L:179:THR:O	2.14	0.48
3:H:147:LEU:HD12	3:H:183:LEU:O	2.14	0.47
1:A:121:GLY:HA2	6:A:703:42F:I	2.84	0.47
2:L:34:LEU:O	2:L:35:HIS:ND1	2.47	0.47
1:A:146:THR:CG2	1:A:398:ALA:HB1	2.44	0.47
1:A:268:THR:O	1:A:420:ASP:OD2	2.32	0.47
2:L:81:ALA:HA	2:L:107:MET:HE3	1.97	0.47
3:H:200:THR:HG22	3:H:215:LYS:HG2	1.97	0.47
3:H:205:HIS:HB3	3:H:210:THR:HB	1.95	0.47
1:A:41:ILE:CD1	1:A:348:THR:HG23	2.44	0.47
1:A:250:CYS:HG	1:A:423:PHE:HE1	1.62	0.47
2:L:141:TYR:CD1	2:L:142:PRO:CB	2.97	0.47
2:L:60:PRO:HG2	2:L:63:PHE:CE1	2.50	0.47
1:A:157:CYS:HA	1:A:209:GLN:O	2.15	0.47

Continued on next page...

Continued from previous page...

Atom-1	Atom-2	Interatomic distance (Å)	Clash overlap (Å)
1:A:389:VAL:HG23	1:A:390:PHE:CD2	2.50	0.47
1:A:544:PRO:O	1:A:546:THR:HG23	2.15	0.47
2:L:95:TYR:OH	3:H:50:GLU:OE1	2.32	0.47
1:A:571:ILE:HB	1:A:572:PRO:CD	2.45	0.47
2:L:136:PHE:HB3	2:L:138:ASN:HD21	1.80	0.47
1:A:41:ILE:HD11	1:A:348:THR:HA	1.96	0.46
1:A:378:ILE:HG23	1:A:379:GLU:HG2	1.97	0.46
2:L:145:ILE:CG2	2:L:164:TRP:HE1	2.28	0.46
1:A:268:THR:HA	1:A:416:THR:HB	1.96	0.46
1:A:454:LEU:HD12	1:A:454:LEU:O	2.15	0.46
3:H:214:LYS:HB2	3:H:214:LYS:HE3	1.72	0.46
1:A:99:TRP:CZ2	1:A:490:GLU:HG2	2.50	0.46
1:A:133:ARG:NH1	1:A:137:ALA:HB2	2.31	0.46
3:H:19:LYS:NZ	3:H:81:LEU:HB3	2.31	0.46
1:A:502:ARG:HE	3:H:56:ARG:HG3	1.80	0.46
3:H:51:ILE:HG13	3:H:58:ILE:HD11	1.97	0.46
3:H:64:VAL:HG12	3:H:65:THR:N	2.31	0.46
1:A:327:VAL:HG22	1:A:428:ALA:CB	2.45	0.46
1:A:426:MET:O	1:A:430:ILE:HG13	2.15	0.46
2:L:122:SER:OG	3:H:129:PRO:HD2	2.16	0.46
1:A:71:ILE:O	1:A:75:VAL:HG22	2.15	0.46
1:A:575:ALA:O	1:A:579:LEU:HG	2.16	0.46
3:H:19:LYS:HB2	3:H:82:GLU:HA	1.98	0.46
1:A:502:ARG:HE	3:H:56:ARG:CG	2.29	0.46
1:A:62:GLY:HA2	1:A:296:TYR:O	2.15	0.46
1:A:85:LEU:CD2	1:A:328:LEU:HB3	2.46	0.46
2:L:116:VAL:HG12	2:L:208:LYS:HG3	1.98	0.46
1:A:113:VAL:HG22	1:A:324:GLY:O	2.16	0.45
1:A:118:PHE:N	1:A:429:ILE:HD11	2.31	0.45
1:A:146:THR:HG22	1:A:398:ALA:CB	2.46	0.45
3:H:87:ARG:HB2	3:H:89:GLU:HG2	1.98	0.45
1:A:485:VAL:HG21	1:A:568:VAL:HG21	1.99	0.45
2:L:11:MET:HB3	2:L:105:LEU:HD23	1.98	0.45
2:L:137:LEU:HD12	2:L:137:LEU:N	2.30	0.45
1:A:85:LEU:HD22	1:A:332:ALA:HB2	1.97	0.45
1:A:266:TRP:O	1:A:270:LEU:HB2	2.16	0.45
1:A:527:ALA:N	1:A:528:PRO:HD2	2.31	0.45
3:H:70:ILE:HA	3:H:81:LEU:HG	1.98	0.45
1:A:443:ASN:CA	1:A:445:GLU:HB2	2.47	0.45
3:H:4:LEU:HB3	3:H:22:CYS:SG	2.57	0.45
1:A:251:TYR:CE1	1:A:448:VAL:HG23	2.52	0.45

Continued on next page...

Continued from previous page...

Atom-1	Atom-2	Interatomic distance (Å)	Clash overlap (Å)
1:A:377:ARG:HG2	1:A:379:GLU:HG3	1.98	0.45
1:A:507:ILE:HA	1:A:510:MET:CE	2.46	0.45
1:A:147:SER:HB2	1:A:150:ASN:OD1	2.17	0.45
1:A:29:THR:HG23	1:A:334:TYR:O	2.16	0.44
1:A:120:VAL:HG11	6:A:703:42F:C15	2.47	0.44
2:L:34:LEU:O	2:L:51:SER:O	2.35	0.44
3:H:38:ARG:HD3	3:H:94:TYR:CE2	2.51	0.44
1:A:113:VAL:HG11	1:A:326:GLY:HA3	1.99	0.44
1:A:553:PRO:HB2	1:A:555:TRP:NE1	2.32	0.44
3:H:51:ILE:HG12	3:H:52:SER:O	2.18	0.44
1:A:99:TRP:CH2	1:A:490:GLU:HA	2.52	0.44
2:L:21:MET:HG3	2:L:74:LEU:HB3	2.00	0.44
2:L:49:ILE:HG12	2:L:55:LEU:HD23	1.99	0.44
3:H:19:LYS:CG	3:H:20:LEU:N	2.78	0.44
1:A:445:GLU:O	1:A:446:LEU:CB	2.64	0.44
3:H:51:ILE:HD11	3:H:72:ARG:HB2	1.98	0.44
3:H:176:LEU:HD12	3:H:180:LEU:C	2.38	0.44
1:A:258:ILE:HA	1:A:261:SER:OG	2.18	0.44
1:A:260:THR:O	1:A:264:VAL:HG23	2.18	0.44
1:A:429:ILE:O	1:A:433:LEU:HG	2.18	0.44
1:A:489:PHE:HD2	1:A:571:ILE:HG21	1.78	0.44
1:A:229:ILE:CD1	1:A:473:LEU:HD22	2.47	0.43
1:A:51:TRP:CZ3	1:A:386:PRO:HA	2.53	0.43
1:A:514:PRO:HA	1:A:515:PRO:HD3	1.87	0.43
1:A:545:LEU:HG	1:A:552:TYR:CD1	2.52	0.43
3:H:87:ARG:O	3:H:117:VAL:HG11	2.18	0.43
1:A:139:PHE:O	1:A:140:THR:HB	2.18	0.43
1:A:260:THR:OG1	1:A:261:SER:N	2.51	0.43
1:A:487:VAL:O	1:A:490:GLU:HB2	2.18	0.43
1:A:120:VAL:CG1	6:A:703:42F:C15	2.96	0.43
2:L:4:LEU:O	2:L:100:GLY:HA2	2.18	0.43
3:H:51:ILE:HA	3:H:58:ILE:CD1	2.47	0.43
1:A:255:TRP:O	1:A:444:ARG:NH1	2.48	0.43
2:L:24:ARG:CZ	2:L:71:SER:HB2	2.48	0.43
1:A:50:VAL:O	1:A:54:PRO:HD2	2.16	0.43
1:A:238:ASP:OD1	1:A:239:MET:HG2	2.19	0.43
1:A:277:LEU:HD13	7:A:705:CLR:H263	1.99	0.43
1:A:134:PHE:O	1:A:138:SER:OG	2.32	0.43
7:A:705:CLR:H121	7:A:705:CLR:C21	2.49	0.43
3:H:18:LEU:HD12	3:H:19:LYS:N	2.33	0.43
1:A:38:LEU:HD23	1:A:38:LEU:HA	1.87	0.42

Continued on next page...

Continued from previous page...

Atom-1	Atom-2	Interatomic distance (Å)	Clash overlap (Å)
1:A:240:ALA:HA	1:A:463:CYS:SG	2.59	0.42
1:A:443:ASN:CB	1:A:445:GLU:HB2	2.47	0.42
1:A:506:ASP:OD1	3:H:57:TYR:OH	2.28	0.42
1:A:223:LEU:HD11	1:A:469:TYR:CD2	2.53	0.42
1:A:272:PRO:HG3	1:A:416:THR:OG1	2.19	0.42
3:H:130:LEU:N	3:H:145:GLY:O	2.48	0.42
1:A:64:ALA:HB2	1:A:301:PHE:CD1	2.54	0.42
3:H:67:ARG:NH1	3:H:85:SER:O	2.50	0.42
3:H:211:LYS:HD2	3:H:211:LYS:N	2.33	0.42
1:A:27:ARG:NH1	1:A:92:ARG:O	2.53	0.42
1:A:107:LYS:O	1:A:107:LYS:HG2	2.20	0.42
1:A:268:THR:OG1	1:A:420:ASP:HB3	2.19	0.42
1:A:428:ALA:O	1:A:432:ALA:HB2	2.19	0.42
3:H:194:TRP:HZ2	3:H:217:GLU:HA	1.84	0.42
1:A:73:LEU:HA	1:A:317:VAL:HG11	2.02	0.42
1:A:251:TYR:HA	1:A:452:PHE:CE2	2.53	0.42
1:A:445:GLU:O	1:A:446:LEU:HB2	2.20	0.42
3:H:64:VAL:HG13	3:H:68:PHE:CB	2.38	0.42
3:H:176:LEU:HD12	3:H:180:LEU:O	2.20	0.42
1:A:448:VAL:HG23	1:A:449:ALA:N	2.34	0.42
1:A:530:PHE:O	1:A:534:ILE:HG13	2.19	0.42
1:A:532:LEU:HD23	1:A:532:LEU:C	2.40	0.42
3:H:34:MET:HB3	3:H:79:LEU:HD22	2.02	0.42
3:H:68:PHE:CZ	3:H:83:MET:HE2	2.54	0.42
3:H:127:VAL:HG12	3:H:214:LYS:NZ	2.34	0.42
1:A:124:TYR:CD1	1:A:124:TYR:O	2.73	0.42
1:A:138:SER:HB2	1:A:408:LEU:HD21	2.01	0.42
3:H:142:VAL:HG22	3:H:143:THR:N	2.34	0.42
1:A:281:ILE:HG22	1:A:282:ARG:N	2.35	0.42
2:L:177:SER:HB2	3:H:172:PHE:CE2	2.55	0.42
3:H:50:GLU:HG2	3:H:51:ILE:N	2.35	0.42
3:H:127:VAL:HG22	3:H:148:VAL:HG22	2.01	0.42
1:A:420:ASP:N	1:A:420:ASP:OD1	2.53	0.42
2:L:180:LEU:C	2:L:180:LEU:HD23	2.41	0.42
3:H:128:TYR:HA	3:H:214:LYS:HZ3	1.84	0.41
3:H:132:PRO:HD2	3:H:144:LEU:HD23	2.01	0.41
1:A:95:ALA:HA	1:A:329:LEU:HD23	2.02	0.41
1:A:102:LEU:HG	1:A:498:TYR:HD2	1.84	0.41
1:A:525:PHE:O	1:A:528:PRO:HG2	2.20	0.41
1:A:273:TYR:HD2	7:A:705:CLR:H232	1.85	0.41
3:H:161:ASN:OD1	3:H:200:THR:N	2.38	0.41

Continued on next page...

Continued from previous page...

Atom-1	Atom-2	Interatomic distance (Å)	Clash overlap (Å)
2:L:47:LEU:HD12	2:L:48:TRP:N	2.36	0.41
1:A:583:PRO:O	1:A:589:ARG:HB3	2.21	0.41
2:L:125:GLN:HG3	3:H:128:TYR:CE2	2.55	0.41
2:L:163:SER:O	2:L:176:MET:HA	2.20	0.41
3:H:27:PHE:CD1	3:H:32:TYR:HD2	2.38	0.41
1:A:35:ASP:OD1	1:A:35:ASP:N	2.53	0.41
1:A:38:LEU:HB3	1:A:265:VAL:CG2	2.49	0.41
3:H:19:LYS:NZ	3:H:81:LEU:CB	2.84	0.41
3:H:68:PHE:CD2	3:H:83:MET:HG2	2.55	0.41
4:A:701:DMU:H36	4:A:701:DMU:H4	1.38	0.41
3:H:21:SER:CB	3:H:80:HIS:HB3	2.51	0.41
3:H:68:PHE:HB3	3:H:81:LEU:HD21	2.03	0.41
1:A:586:LEU:CA	1:A:589:ARG:HG2	2.48	0.41
1:A:73:LEU:HA	1:A:317:VAL:CG1	2.50	0.41
1:A:130:TRP:CD1	1:A:239:MET:HE1	2.49	0.41
1:A:218:ARG:CZ	1:A:224:ASN:HD22	2.34	0.41
2:L:136:PHE:CE2	3:H:186:SER:HB3	2.56	0.41
3:H:20:LEU:HD22	3:H:113:THR:HG23	2.01	0.41
3:H:125:PRO:HB3	3:H:151:TYR:CB	2.45	0.41
1:A:85:LEU:HD23	1:A:85:LEU:HA	1.74	0.41
2:L:122:SER:O	2:L:126:LEU:HG	2.21	0.41
1:A:582:THR:HA	1:A:583:PRO:HD3	1.82	0.40
3:H:87:ARG:CB	3:H:89:GLU:HG2	2.50	0.40
1:A:241:LEU:O	1:A:245:ILE:HG13	2.21	0.40
3:H:9:GLY:N	3:H:20:LEU:HD23	2.36	0.40
3:H:132:PRO:HA	3:H:133:VAL:HA	1.72	0.40
1:A:108:GLY:HA2	1:A:574:VAL:HG21	2.03	0.40
1:A:157:CYS:O	1:A:158:ARG:NH1	2.44	0.40
1:A:508:ARG:NH2	3:H:50:GLU:OE2	2.51	0.40
1:A:51:TRP:C	1:A:51:TRP:CD1	2.95	0.40
1:A:570:MET:HA	1:A:570:MET:HE1	2.02	0.40

There are no symmetry-related clashes.

5.3 Torsion angles

5.3.1 Protein backbone

In the following table, the Percentiles column shows the percent Ramachandran outliers of the chain as a percentile score with respect to all X-ray entries followed by that with respect to entries of similar resolution.

The Analysed column shows the number of residues for which the backbone conformation was analysed, and the total number of residues.

Mol	Chain	Analysed	Favoured	Allowed	Outliers	Percentiles	
1	A	530/543 (98%)	503 (95%)	27 (5%)	0	100	100
2	L	212/237 (90%)	204 (96%)	8 (4%)	0	100	100
3	H	211/240 (88%)	203 (96%)	7 (3%)	1 (0%)	29	62
All	All	953/1020 (93%)	910 (96%)	42 (4%)	1 (0%)	51	82

All (1) Ramachandran outliers are listed below:

Mol	Chain	Res	Type
3	H	132	PRO

5.3.2 Protein sidechains [i](#)

In the following table, the Percentiles column shows the percent sidechain outliers of the chain as a percentile score with respect to all X-ray entries followed by that with respect to entries of similar resolution.

The Analysed column shows the number of residues for which the sidechain conformation was analysed, and the total number of residues.

Mol	Chain	Analysed	Rotameric	Outliers	Percentiles	
1	A	421/448 (94%)	403 (96%)	18 (4%)	29	59
2	L	182/207 (88%)	172 (94%)	10 (6%)	21	52
3	H	175/205 (85%)	162 (93%)	13 (7%)	13	40
All	All	778/860 (90%)	737 (95%)	41 (5%)	22	53

All (41) residues with a non-rotameric sidechain are listed below:

Mol	Chain	Res	Type
1	A	35	ASP
1	A	51	TRP
1	A	232	LEU
1	A	255	TRP
1	A	278	ILE
1	A	279	LEU
1	A	281	ILE
1	A	349	SER
1	A	420	ASP

Continued on next page...

Continued from previous page...

Mol	Chain	Res	Type
1	A	443	ASN
1	A	444	ARG
1	A	463	CYS
1	A	502	ARG
1	A	504	SER
1	A	532	LEU
1	A	535	THR
1	A	585	SER
1	A	590	PHE
2	L	115	THR
2	L	156	ARG
2	L	157	GLN
2	L	158	ASN
2	L	161	LEU
2	L	166	ASP
2	L	188	GLU
2	L	192	SER
2	L	199	HIS
2	L	210	PHE
3	H	20	LEU
3	H	35	SER
3	H	52	SER
3	H	80	HIS
3	H	81	LEU
3	H	107	ASP
3	H	123	THR
3	H	130	LEU
3	H	154	GLU
3	H	165	LEU
3	H	175	VAL
3	H	199	ILE
3	H	216	ILE

Sometimes sidechains can be flipped to improve hydrogen bonding and reduce clashes. All (1) such sidechains are listed below:

Mol	Chain	Res	Type
2	L	54	ASN

5.3.3 RNA

There are no RNA molecules in this entry.

5.4 Non-standard residues in protein, DNA, RNA chains [i](#)

There are no non-standard protein/DNA/RNA residues in this entry.

5.5 Carbohydrates [i](#)

There are no monosaccharides in this entry.

5.6 Ligand geometry [i](#)

Of 8 ligands modelled in this entry, 3 are monoatomic - leaving 5 for Mogul analysis.

In the following table, the Counts columns list the number of bonds (or angles) for which Mogul statistics could be retrieved, the number of bonds (or angles) that are observed in the model and the number of bonds (or angles) that are defined in the Chemical Component Dictionary. The Link column lists molecule types, if any, to which the group is linked. The Z score for a bond length (or angle) is the number of standard deviations the observed value is removed from the expected value. A bond length (or angle) with $|Z| > 2$ is considered an outlier worth inspection. RMSZ is the root-mean-square of all Z scores of the bond lengths (or angles).

Mol	Type	Chain	Res	Link	Bond lengths			Bond angles		
					Counts	RMSZ	# Z > 2	Counts	RMSZ	# Z > 2
5	P4G	A	702	-	10,10,10	0.68	0	9,9,9	0.24	0
6	42F	A	703	-	22,22,22	1.78	1 (4%)	28,32,32	1.24	4 (14%)
7	CLR	A	705	-	31,31,31	0.70	0	48,48,48	1.15	4 (8%)
4	DMU	A	701	-	34,34,34	0.40	0	45,45,45	0.73	1 (2%)
7	CLR	A	704	-	31,31,31	0.66	0	48,48,48	1.34	5 (10%)

In the following table, the Chirals column lists the number of chiral outliers, the number of chiral centers analysed, the number of these observed in the model and the number defined in the Chemical Component Dictionary. Similar counts are reported in the Torsion and Rings columns. '-' means no outliers of that kind were identified.

Mol	Type	Chain	Res	Link	Chirals	Torsions	Rings
5	P4G	A	702	-	-	5/8/8/8	-
6	42F	A	703	-	-	2/10/35/35	0/4/3/3
7	CLR	A	705	-	-	3/10/68/68	0/4/4/4
4	DMU	A	701	-	-	10/19/59/59	0/2/2/2
7	CLR	A	704	-	-	2/10/68/68	0/4/4/4

All (1) bond length outliers are listed below:

Mol	Chain	Res	Type	Atoms	Z	Observed(Å)	Ideal(Å)
6	A	703	42F	C8-C6	-7.89	1.40	1.51

All (14) bond angle outliers are listed below:

Mol	Chain	Res	Type	Atoms	Z	Observed(°)	Ideal(°)
7	A	704	CLR	C4-C5-C10	4.90	122.93	116.42
7	A	705	CLR	C4-C5-C10	3.58	121.17	116.42
7	A	705	CLR	C11-C12-C13	-3.09	107.48	112.78
6	A	703	42F	C15-O1-C14	-2.82	109.56	115.94
7	A	704	CLR	C11-C12-C13	-2.77	108.04	112.78
7	A	705	CLR	C4-C5-C6	-2.71	116.70	120.61
6	A	703	42F	O1-C14-C5	2.70	114.97	111.03
4	A	701	DMU	C10-O7-C3	-2.49	111.81	117.96
7	A	704	CLR	C4-C5-C6	-2.46	117.06	120.61
7	A	704	CLR	C1-C2-C3	-2.17	107.68	110.47
7	A	705	CLR	C7-C8-C14	-2.14	107.80	110.91
6	A	703	42F	O-C14-C5	-2.13	121.02	124.99
7	A	704	CLR	C8-C7-C6	-2.03	109.81	112.73
6	A	703	42F	C3-C4-N	-2.03	103.09	105.18

There are no chirality outliers.

All (22) torsion outliers are listed below:

Mol	Chain	Res	Type	Atoms
4	A	701	DMU	C1-C6-O16-C18
4	A	701	DMU	O5-C6-O16-C18
6	A	703	42F	C5-C14-O1-C15
4	A	701	DMU	C4-C3-O7-C10
6	A	703	42F	O-C14-O1-C15
4	A	701	DMU	O6-C11-C9-O1
5	A	702	P4G	O2-C3-C4-O3
7	A	705	CLR	C17-C20-C22-C23
7	A	704	CLR	C20-C22-C23-C24
7	A	705	CLR	C21-C20-C22-C23
4	A	701	DMU	O6-C11-C9-C8
4	A	701	DMU	C19-C18-O16-C6
4	A	701	DMU	C22-C25-C28-C31
4	A	701	DMU	C28-C31-C34-C37
4	A	701	DMU	C2-C3-O7-C10
5	A	702	P4G	O3-C5-C6-O4
5	A	702	P4G	C4-C3-O2-C2
7	A	704	CLR	C22-C23-C24-C25

Continued on next page...

Continued from previous page...

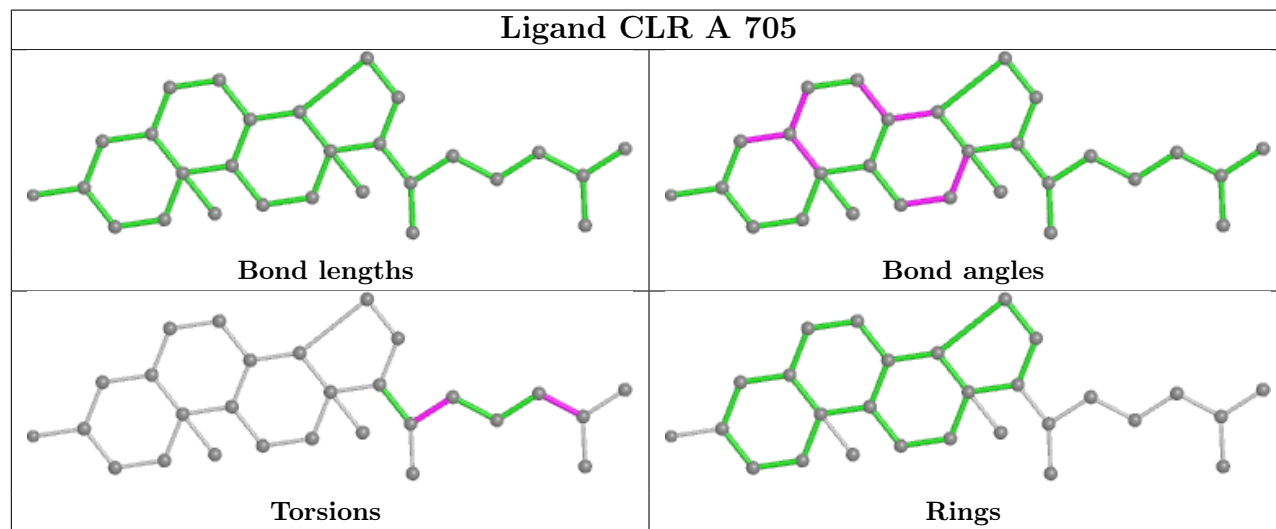
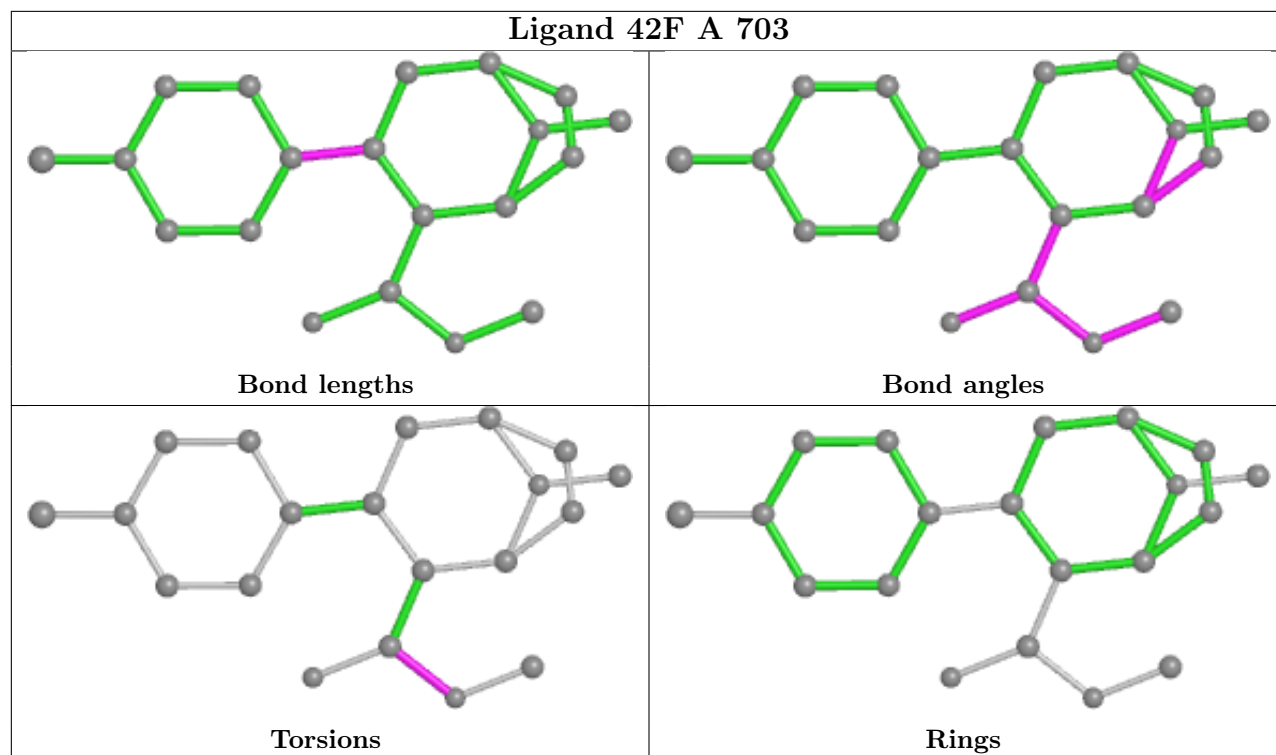
Mol	Chain	Res	Type	Atoms
5	A	702	P4G	C5-C6-O4-C7
5	A	702	P4G	C1-C2-O2-C3
4	A	701	DMU	C31-C34-C37-C40
7	A	705	CLR	C23-C24-C25-C27

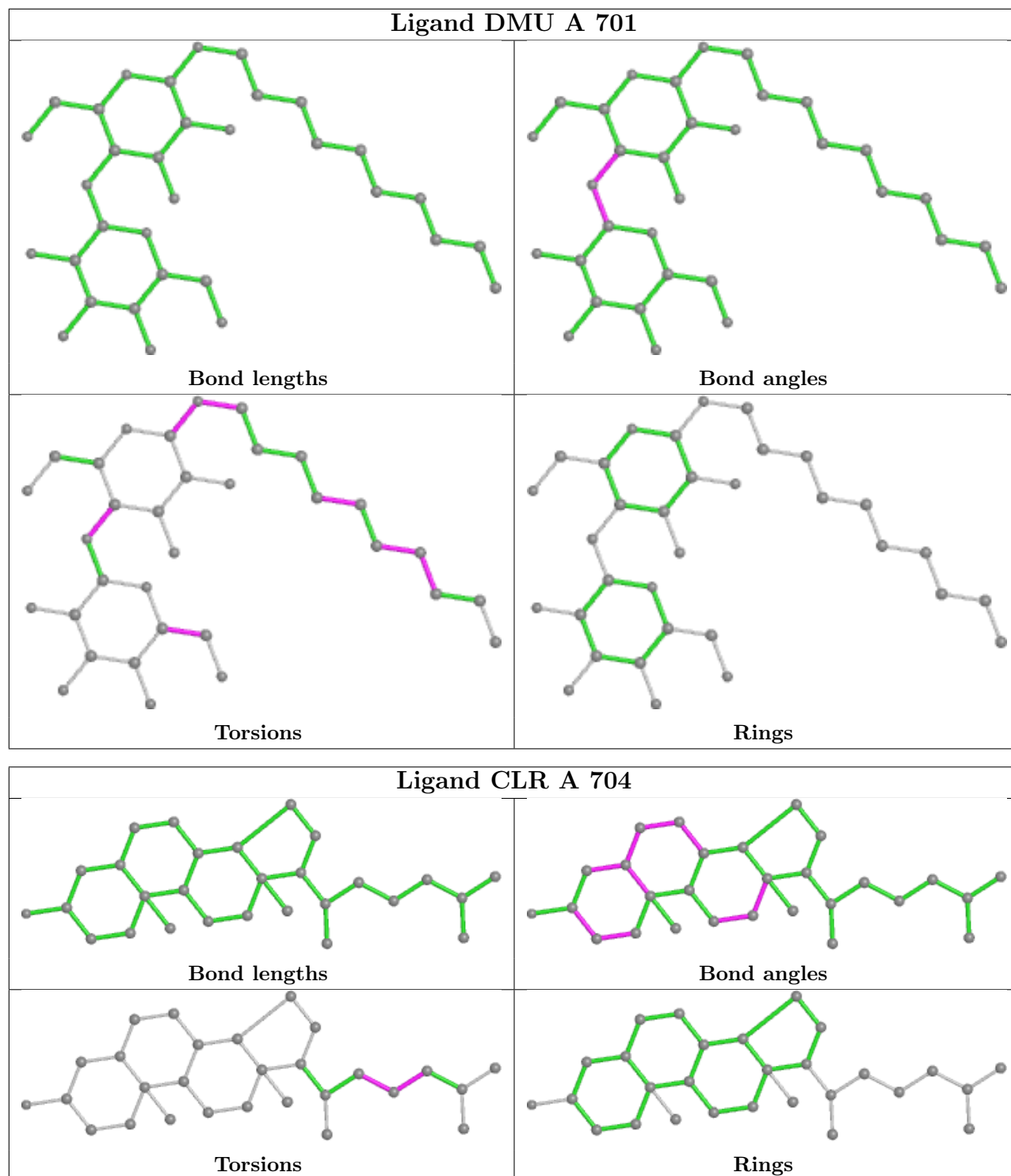
There are no ring outliers.

4 monomers are involved in 23 short contacts:

Mol	Chain	Res	Type	Clashes	Symm-Clashes
6	A	703	42F	17	0
7	A	705	CLR	4	0
4	A	701	DMU	1	0
7	A	704	CLR	1	0

The following is a two-dimensional graphical depiction of Mogul quality analysis of bond lengths, bond angles, torsion angles, and ring geometry for all instances of the Ligand of Interest. In addition, ligands with molecular weight > 250 and outliers as shown on the validation Tables will also be included. For torsion angles, if less than 5% of the Mogul distribution of torsion angles is within 10 degrees of the torsion angle in question, then that torsion angle is considered an outlier. Any bond that is central to one or more torsion angles identified as an outlier by Mogul will be highlighted in the graph. For rings, the root-mean-square deviation (RMSD) between the ring in question and similar rings identified by Mogul is calculated over all ring torsion angles. If the average RMSD is greater than 60 degrees and the minimal RMSD between the ring in question and any Mogul-identified rings is also greater than 60 degrees, then that ring is considered an outlier. The outliers are highlighted in purple. The color gray indicates Mogul did not find sufficient equivalents in the CSD to analyse the geometry.





5.7 Other polymers [\(i\)](#)

There are no such residues in this entry.

5.8 Polymer linkage issues

There are no chain breaks in this entry.

6 Fit of model and data

6.1 Protein, DNA and RNA chains

In the following table, the column labelled ‘#RSRZ > 2’ contains the number (and percentage) of RSRZ outliers, followed by percent RSRZ outliers for the chain as percentile scores relative to all X-ray entries and entries of similar resolution. The OWAB column contains the minimum, median, 95th percentile and maximum values of the occupancy-weighted average B-factor per residue. The column labelled ‘Q < 0.9’ lists the number of (and percentage) of residues with an average occupancy less than 0.9.

Mol	Chain	Analysed	<RSRZ>	#RSRZ>2	OWAB(Å ²)	Q<0.9
1	A	532/543 (97%)	-0.11	6 (1%) 80 80	84, 107, 135, 157	0
2	L	214/237 (90%)	0.24	17 (7%) 12 12	79, 106, 150, 189	0
3	H	215/240 (89%)	0.16	16 (7%) 14 14	81, 106, 149, 191	0
All	All	961/1020 (94%)	0.03	39 (4%) 37 35	79, 107, 144, 191	0

All (39) RSRZ outliers are listed below:

Mol	Chain	Res	Type	RSRZ
3	H	134	CYS	8.0
3	H	133	VAL	6.4
2	L	119	PHE	6.0
3	H	219	ARG	5.9
3	H	132	PRO	4.9
2	L	122	SER	3.7
3	H	1	GLU	3.7
3	H	131	ALA	3.4
3	H	218	PRO	3.4
2	L	118	ILE	3.4
2	L	20	THR	3.3
1	A	290	PHE	3.1
1	A	436	GLU	3.0
3	H	217	GLU	2.9
2	L	125	GLN	2.8
1	A	318	PHE	2.7
3	H	144	LEU	2.6
2	L	123	SER	2.6
2	L	129	GLY	2.6
3	H	149	LYS	2.5
1	A	287	PRO	2.4
2	L	120	PRO	2.4
2	L	130	GLY	2.4

Continued on next page...

Continued from previous page...

Mol	Chain	Res	Type	RSRZ
2	L	136	PHE	2.4
1	A	437	PHE	2.3
3	H	128	TYR	2.3
1	A	283	GLY	2.2
2	L	134	VAL	2.2
3	H	147	LEU	2.2
2	L	214	GLU	2.2
3	H	129	PRO	2.2
2	L	97	LEU	2.1
3	H	97	ALA	2.1
2	L	181	THR	2.1
2	L	18	LYS	2.1
3	H	142	VAL	2.0
2	L	126	LEU	2.0
2	L	124	GLU	2.0
3	H	164	SER	2.0

6.2 Non-standard residues in protein, DNA, RNA chains [i](#)

There are no non-standard protein/DNA/RNA residues in this entry.

6.3 Carbohydrates [i](#)

There are no monosaccharides in this entry.

6.4 Ligands [i](#)

In the following table, the Atoms column lists the number of modelled atoms in the group and the number defined in the chemical component dictionary. The B-factors column lists the minimum, median, 95th percentile and maximum values of B factors of atoms in the group. The column labelled 'Q< 0.9' lists the number of atoms with occupancy less than 0.9.

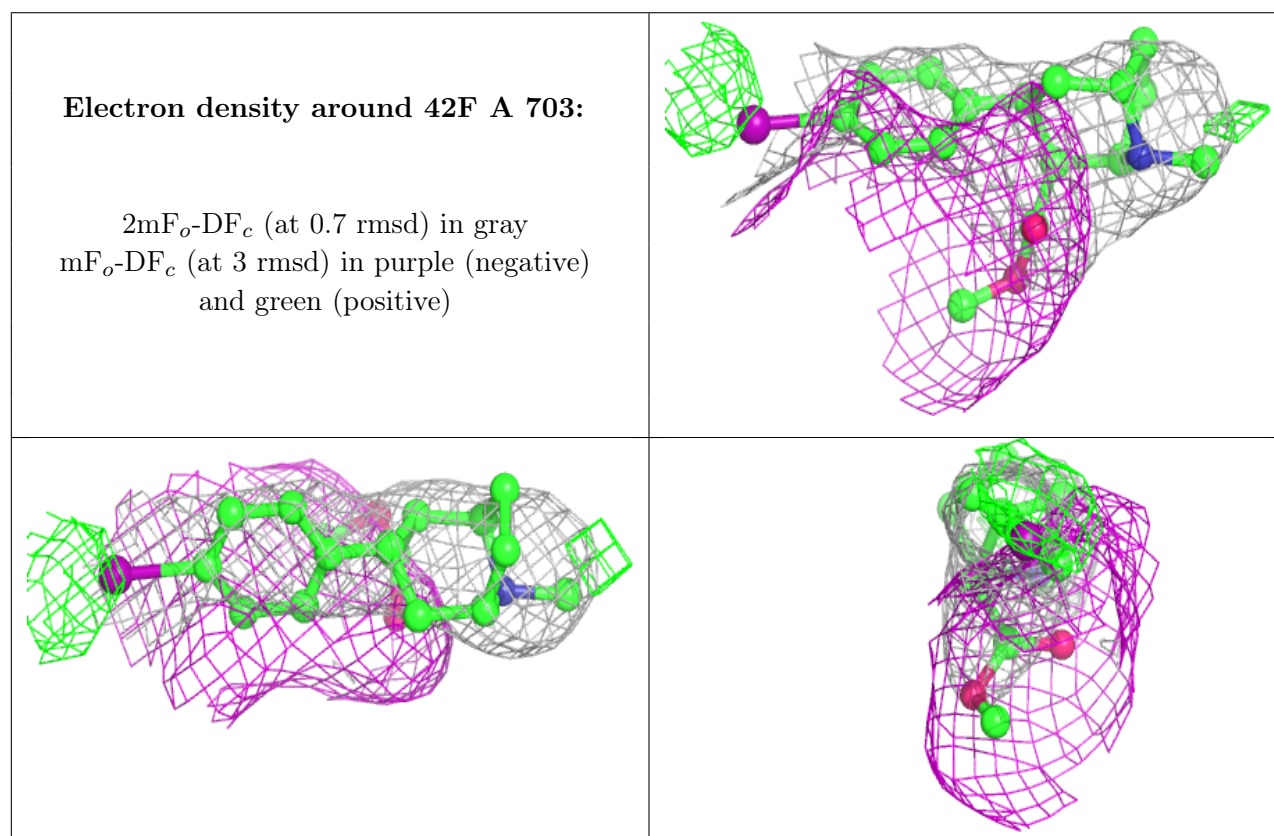
Mol	Type	Chain	Res	Atoms	RSCC	RSR	B-factors(Å ²)	Q<0.9
5	P4G	A	702	11/11	0.60	0.54	114,137,155,156	0
6	42F	A	703	20/20	0.74	0.48	102,121,134,307	0
8	NA	A	707	1/1	0.79	0.21	106,106,106,106	0
4	DMU	A	701	33/33	0.83	0.30	105,134,143,152	0
7	CLR	A	705	28/28	0.87	0.48	87,112,123,126	0
7	CLR	A	704	28/28	0.89	0.30	78,111,115,118	0
9	CL	A	708	1/1	0.94	0.21	107,107,107,107	0

Continued on next page...

Continued from previous page...

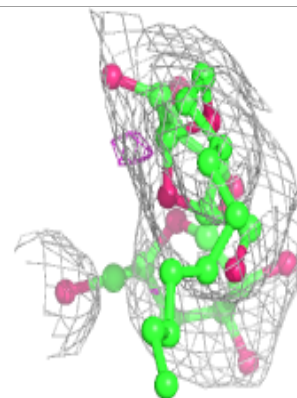
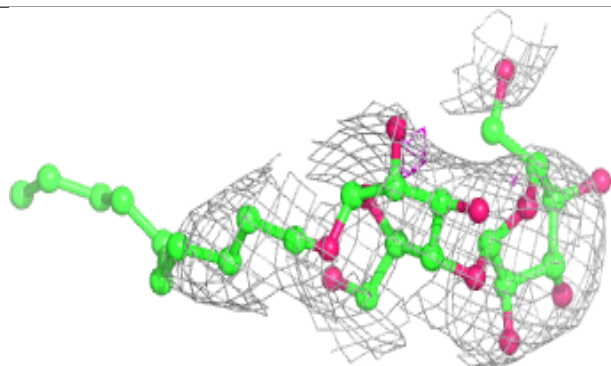
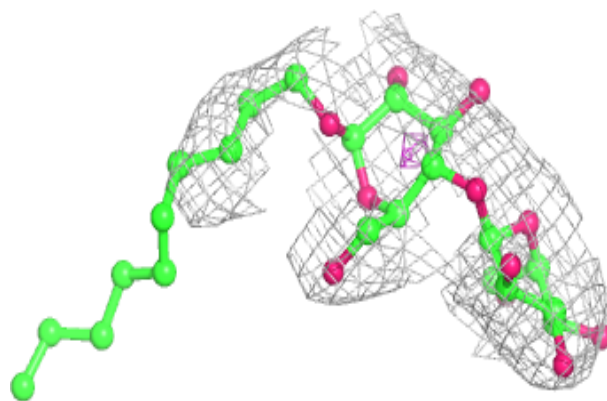
Mol	Type	Chain	Res	Atoms	RSCC	RSR	B-factors(\AA^2)	Q<0.9
8	NA	A	706	1/1	0.97	0.35	106,106,106,106	0

The following is a graphical depiction of the model fit to experimental electron density of all instances of the Ligand of Interest. In addition, ligands with molecular weight > 250 and outliers as shown on the geometry validation Tables will also be included. Each fit is shown from different orientation to approximate a three-dimensional view.

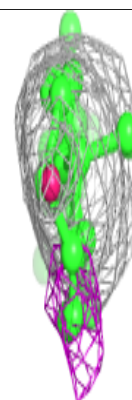
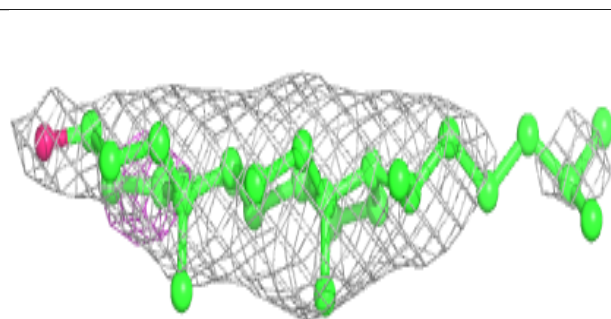
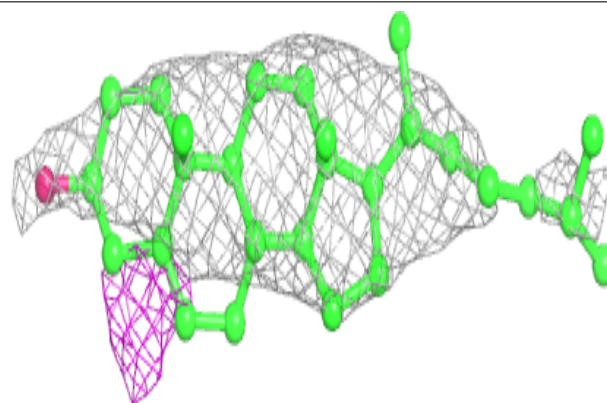


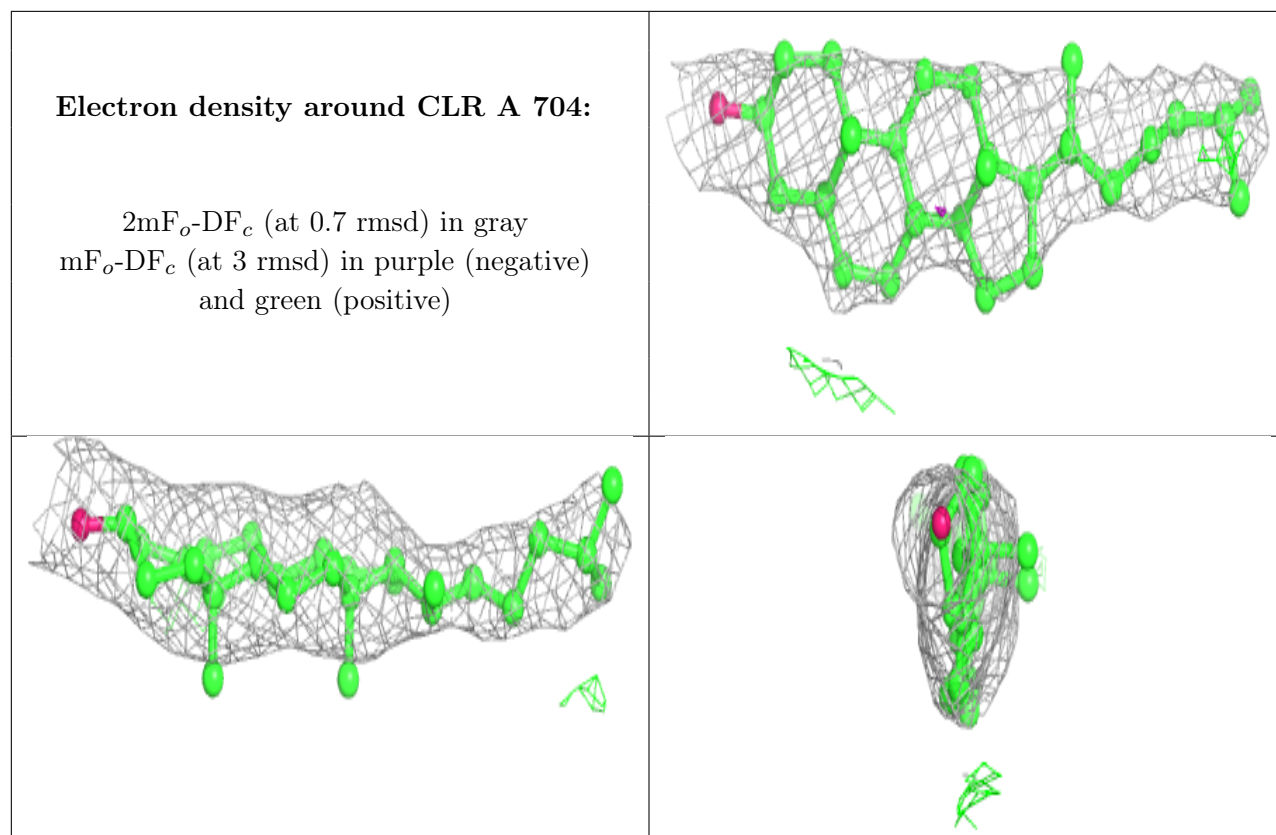
Electron density around DMU A 701:

$2mF_o-DF_c$ (at 0.7 rmsd) in gray
 mF_o-DF_c (at 3 rmsd) in purple (negative)
and green (positive)

**Electron density around CLR A 705:**

$2mF_o-DF_c$ (at 0.7 rmsd) in gray
 mF_o-DF_c (at 3 rmsd) in purple (negative)
and green (positive)





6.5 Other polymers [i](#)

There are no such residues in this entry.