



Full wwPDB EM Validation Report ⓘ

Nov 30, 2022 – 04:05 AM JST

PDB ID : 7XTA
EMDB ID : EMD-33444
Title : Serotonin 4 (5-HT4) receptor-Gi-scFv16 complex
Authors : Huang, S.; Xu, P.; Shen, D.D.; Simon, I.A.; Mao, C.; Tan, Y.; Zhang, H.; Harpsoe, K.; Li, H.; Zhang, Y.; You, C.; Yu, X.; Jiang, Y.; Zhang, Y.; Gloriam, D.E.; Xu, H.E.
Deposited on : 2022-05-16
Resolution : 3.20 Å(reported)

This is a Full wwPDB EM Validation Report for a publicly released PDB entry.

We welcome your comments at validation@mail.wwpdb.org

A user guide is available at

<https://www.wwpdb.org/validation/2017/EMValidationReportHelp>

with specific help available everywhere you see the ⓘ symbol.

The types of validation reports are described at

<http://www.wwpdb.org/validation/2017/FAQs#types>.

The following versions of software and data (see [references ⓘ](#)) were used in the production of this report:

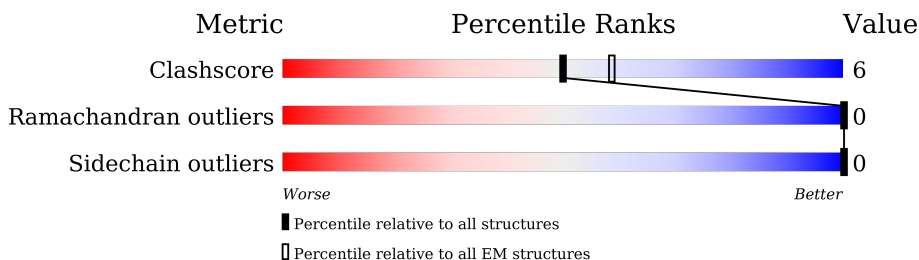
EMDB validation analysis : 0.0.1.dev43
Mogul : 1.8.5 (274361), CSD as541be (2020)
MolProbity : 4.02b-467
buster-report : 1.1.7 (2018)
Percentile statistics : 20191225.v01 (using entries in the PDB archive December 25th 2019)
MapQ : 1.9.9
Ideal geometry (proteins) : Engh & Huber (2001)
Ideal geometry (DNA, RNA) : Parkinson et al. (1996)
Validation Pipeline (wwPDB-VP) : 2.31.3

1 Overall quality at a glance

The following experimental techniques were used to determine the structure:
ELECTRON MICROSCOPY

The reported resolution of this entry is 3.20 Å.

Percentile scores (ranging between 0-100) for global validation metrics of the entry are shown in the following graphic. The table shows the number of entries on which the scores are based.



Metric	Whole archive (#Entries)	EM structures (#Entries)
Clashscore	158937	4297
Ramachandran outliers	154571	4023
Sidechain outliers	154315	3826

The table below summarises the geometric issues observed across the polymeric chains and their fit to the map. The red, orange, yellow and green segments of the bar indicate the fraction of residues that contain outliers for ≥ 3 , 2, 1 and 0 types of geometric quality criteria respectively. A grey segment represents the fraction of residues that are not modelled. The numeric value for each fraction is indicated below the corresponding segment, with a dot representing fractions $\leq 5\%$. The upper red bar (where present) indicates the fraction of residues that have poor fit to the EM map (all-atom inclusion $< 40\%$). The numeric value is given above the bar.

Mol	Chain	Length	Quality of chain
1	A	354	
2	B	345	
3	E	249	
4	G	71	
5	R	527	

2 Entry composition [\(i\)](#)

There are 6 unique types of molecules in this entry. The entry contains 17490 atoms, of which 8719 are hydrogens and 0 are deuteriums.

In the tables below, the AltConf column contains the number of residues with at least one atom in alternate conformation and the Trace column contains the number of residues modelled with at most 2 atoms.

- Molecule 1 is a protein called Guanine nucleotide-binding protein G(i) subunit alpha-1.

Mol	Chain	Residues	Atoms					AltConf	Trace	
			Total	C	H	N	O			S
1	A	219	3538	1126	1772	295	333	12	0	0

There are 4 discrepancies between the modelled and reference sequences:

Chain	Residue	Modelled	Actual	Comment	Reference
A	47	ASN	SER	conflict	UNP P63096
A	203	ALA	GLY	conflict	UNP P63096
A	245	ALA	GLU	conflict	UNP P63096
A	326	SER	ALA	conflict	UNP P63096

- Molecule 2 is a protein called Guanine nucleotide-binding protein G(I)/G(S)/G(T) subunit beta-1.

Mol	Chain	Residues	Atoms					AltConf	Trace	
			Total	C	H	N	O			S
2	B	333	5026	1580	2468	460	497	21	0	0

There are 6 discrepancies between the modelled and reference sequences:

Chain	Residue	Modelled	Actual	Comment	Reference
B	-4	MET	-	initiating methionine	UNP P62873
B	-3	GLY	-	expression tag	UNP P62873
B	-2	SER	-	expression tag	UNP P62873
B	-1	LEU	-	expression tag	UNP P62873
B	0	LEU	-	expression tag	UNP P62873
B	1	GLN	-	expression tag	UNP P62873

- Molecule 3 is a protein called scFv16.

Mol	Chain	Residues	Atoms					AltConf	Trace	
			Total	C	H	N	O			S
3	E	230	3472	1120	1704	293	345	10	0	0

- Molecule 4 is a protein called Guanine nucleotide-binding protein G(I)/G(S)/G(O) subunit gamma-2.

Mol	Chain	Residues	Atoms					AltConf	Trace	
			Total	C	H	N	O			S
4	G	50	794	246	403	69	73	3	0	0

- Molecule 5 is a protein called Soluble cytochrome b562,5-hydroxytryptamine receptor 4.

Mol	Chain	Residues	Atoms					AltConf	Trace	
			Total	C	H	N	O			S
5	R	283	4635	1525	2360	357	369	24	0	0

There are 37 discrepancies between the modelled and reference sequences:

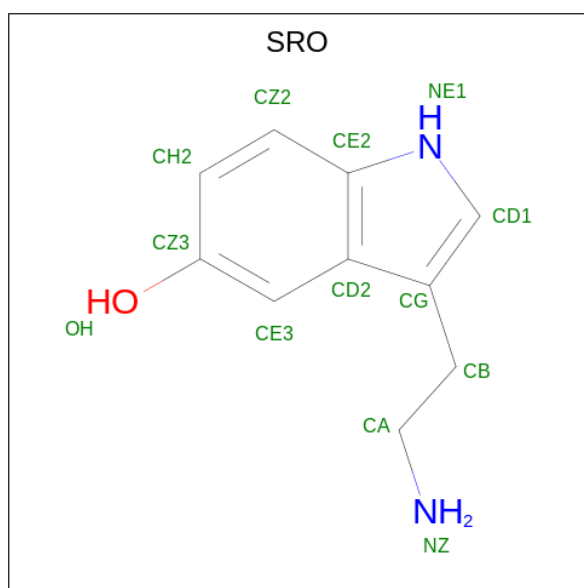
Chain	Residue	Modelled	Actual	Comment	Reference
R	-139	ASP	-	expression tag	UNP P0ABE7
R	-138	TYR	-	expression tag	UNP P0ABE7
R	-137	LYS	-	expression tag	UNP P0ABE7
R	-136	ASP	-	expression tag	UNP P0ABE7
R	-135	ASP	-	expression tag	UNP P0ABE7
R	-134	ASP	-	expression tag	UNP P0ABE7
R	-133	ASP	-	expression tag	UNP P0ABE7
R	-132	ALA	-	expression tag	UNP P0ABE7
R	-131	LYS	-	expression tag	UNP P0ABE7
R	-130	LEU	-	expression tag	UNP P0ABE7
R	-129	GLN	-	expression tag	UNP P0ABE7
R	-128	THR	-	expression tag	UNP P0ABE7
R	-127	MET	-	expression tag	UNP P0ABE7
R	-126	HIS	-	expression tag	UNP P0ABE7
R	-125	HIS	-	expression tag	UNP P0ABE7
R	-124	HIS	-	expression tag	UNP P0ABE7
R	-123	HIS	-	expression tag	UNP P0ABE7
R	-122	HIS	-	expression tag	UNP P0ABE7
R	-121	HIS	-	expression tag	UNP P0ABE7
R	-120	HIS	-	expression tag	UNP P0ABE7
R	-119	HIS	-	expression tag	UNP P0ABE7
R	-118	HIS	-	expression tag	UNP P0ABE7
R	-117	HIS	-	expression tag	UNP P0ABE7
R	-110	TRP	MET	conflict	UNP P0ABE7
R	-15	ILE	HIS	conflict	UNP P0ABE7
R	-11	LEU	-	linker	UNP P0ABE7
R	-10	ALA	-	linker	UNP P0ABE7
R	-9	SER	-	linker	UNP P0ABE7

Continued on next page...

Continued from previous page...

Chain	Residue	Modelled	Actual	Comment	Reference
R	-8	GLU	-	linker	UNP P0ABE7
R	-7	ASN	-	linker	UNP P0ABE7
R	-6	LEU	-	linker	UNP P0ABE7
R	-5	TYR	-	linker	UNP P0ABE7
R	-4	PHE	-	linker	UNP P0ABE7
R	-3	GLN	-	linker	UNP P0ABE7
R	-2	GLY	-	linker	UNP P0ABE7
R	-1	GLY	-	linker	UNP P0ABE7
R	0	THR	-	linker	UNP P0ABE7

- Molecule 6 is SEROTONIN (three-letter code: SRO) (formula: C₁₀H₁₂N₂O) (labeled as "Ligand of Interest" by depositor).



Mol	Chain	Residues	Atoms				AltConf	
			Total	C	H	N		O
6	R	1	25	10	12	2	1	0

- Molecule 4: Guanine nucleotide-binding protein G(I)/G(S)/G(O) subunit gamma-2



MET	ASP	B13	A33	L51	R62	GLU	LYS	LYS	LYS	PHE	PHE	CYS	ALA	ILE	LEU
-----	-----	-----	-----	-----	-----	-----	-----	-----	-----	-----	-----	-----	-----	-----	-----

- Molecule 5: Soluble cytochrome b562,5-hydroxytryptamine receptor 4



ASP	TYR	LYS	ASP	GLN	ASP	THR	ALA	ASP	ALA	LYS	LEU	GLN	GLN	ALA	THR	MET	ARG	ALA	ALA
-----	-----	-----	-----	-----	-----	-----	-----	-----	-----	-----	-----	-----	-----	-----	-----	-----	-----	-----	-----

LEU	ASP	ALA	GLN	LYS	THR	PRO	PRO	LEU	GLU	ASP	LYS	THR	VAL	GLY	GLN	ASP	ASP	ALA	LYS	VAL	VAL	LYS	VAL	GLN	ALA	LYS	ASP	ALA	LEU	THR	LYS	THR	ALA	ALA
-----	-----	-----	-----	-----	-----	-----	-----	-----	-----	-----	-----	-----	-----	-----	-----	-----	-----	-----	-----	-----	-----	-----	-----	-----	-----	-----	-----	-----	-----	-----	-----	-----	-----	-----

ARG	ASN	ALA	TYR	ILE	GLN	LYS	TYR	LEU	ALA	SER	SER	GLU	GLY	THR	ASP	THR	ASP	GLY	VAL	VAL	V43	C44	W45	D46	R47	Q48	T54	N55	Y56	V59	S60
-----	-----	-----	-----	-----	-----	-----	-----	-----	-----	-----	-----	-----	-----	-----	-----	-----	-----	-----	-----	-----	-----	-----	-----	-----	-----	-----	-----	-----	-----	-----	-----

L61	A62	L66	V68	S69	V70	L71	M72	P74	F75	G76	L80	V81	Q82	D89	V100	L101	L102	T103	T104	A105	S106	I107	F108	H109	L110	C111	L115	Y119	C123	V127	Y128	K131	M132	L135	G142	G143	V146	I147	P148	I151	K171	F174	N175
-----	-----	-----	-----	-----	-----	-----	-----	-----	-----	-----	-----	-----	-----	-----	------	------	------	------	------	------	------	------	------	------	------	------	------	------	------	------	------	------	------	------	------	------	------	------	------	------	------	------	------

Q176	N177	A199	I202	P203	F204	L205	V208	Y211	Y215	I225	GLN	MET	LEU	GLN	ARG	ALA	GLY	ALA	ALA	SER	VAL	VAL	GLU	SER	ARG	PRO	GLN	SER	ALA	ASP	GLN	HIS	SER	THR	THR	HIS	HIS	ARG	MET	ARG	THR	THR	GLU	ARG	T254	A257	L260	W271	W298	Y301	I302	F313	L314
------	------	------	------	------	------	------	------	------	------	------	-----	-----	-----	-----	-----	-----	-----	-----	-----	-----	-----	-----	-----	-----	-----	-----	-----	-----	-----	-----	-----	-----	-----	-----	-----	-----	-----	-----	-----	-----	-----	-----	-----	-----	------	------	------	------	------	------	------	------	------

R319	R320	A321	F322	L323	I324	L325	L326	C327	C328	ASP	ASP	GLU	ARG	TYR	ARG	ARG	PRO	PRO	ILE	LEU	GLY	GLN	THR	VAL	PRO	CYS	SER	THR	THR	THR	THR	ILE	ASN	GLY	SER	THR	HIS	HIS	VAL	LEU	ARG	ASP	ALA	VAL	VAL	GLU	CYS	GLY	GLN	GLN	TRP	GLU	SER	GLN	CYS	HIS	PRO	PRO	ALA	THR	SER
------	------	------	------	------	------	------	------	------	------	-----	-----	-----	-----	-----	-----	-----	-----	-----	-----	-----	-----	-----	-----	-----	-----	-----	-----	-----	-----	-----	-----	-----	-----	-----	-----	-----	-----	-----	-----	-----	-----	-----	-----	-----	-----	-----	-----	-----	-----	-----	-----	-----	-----	-----	-----	-----	-----	-----	-----	-----	-----

PRO	LEU	VAL	ALA	GLN	PRO	SER	ASP	THR
-----	-----	-----	-----	-----	-----	-----	-----	-----

4 Experimental information

Property	Value	Source
EM reconstruction method	SINGLE PARTICLE	Depositor
Imposed symmetry	POINT, Not provided	
Number of particles used	611883	Depositor
Resolution determination method	FSC 0.143 CUT-OFF	Depositor
CTF correction method	PHASE FLIPPING AND AMPLITUDE CORRECTION	Depositor
Microscope	FEI TITAN KRIOS	Depositor
Voltage (kV)	300	Depositor
Electron dose ($e^-/\text{\AA}^2$)	70	Depositor
Minimum defocus (nm)	1200	Depositor
Maximum defocus (nm)	2200	Depositor
Magnification	Not provided	
Image detector	GATAN K3 (6k x 4k)	Depositor
Maximum map value	1.718	Depositor
Minimum map value	-0.023	Depositor
Average map value	0.003	Depositor
Map value standard deviation	0.034	Depositor
Recommended contour level	0.04	Depositor
Map size (Å)	214.2, 214.2, 214.2	wwPDB
Map dimensions	200, 200, 200	wwPDB
Map angles (°)	90.0, 90.0, 90.0	wwPDB
Pixel spacing (Å)	1.071, 1.071, 1.071	Depositor

5 Model quality [i](#)

5.1 Standard geometry [i](#)

Bond lengths and bond angles in the following residue types are not validated in this section: SRO

The Z score for a bond length (or angle) is the number of standard deviations the observed value is removed from the expected value. A bond length (or angle) with $|Z| > 5$ is considered an outlier worth inspection. RMSZ is the root-mean-square of all Z scores of the bond lengths (or angles).

Mol	Chain	Bond lengths		Bond angles	
		RMSZ	# Z >5	RMSZ	# Z >5
1	A	0.25	0/1795	0.42	0/2407
2	B	0.24	0/2605	0.46	0/3532
3	E	0.25	0/1812	0.44	0/2456
4	G	0.25	0/397	0.38	0/535
5	R	0.25	0/2336	0.41	0/3184
All	All	0.25	0/8945	0.43	0/12114

There are no bond length outliers.

There are no bond angle outliers.

There are no chirality outliers.

There are no planarity outliers.

5.2 Too-close contacts [i](#)

In the following table, the Non-H and H(model) columns list the number of non-hydrogen atoms and hydrogen atoms in the chain respectively. The H(added) column lists the number of hydrogen atoms added and optimized by MolProbity. The Clashes column lists the number of clashes within the asymmetric unit, whereas Symm-Clashes lists symmetry-related clashes.

Mol	Chain	Non-H	H(model)	H(added)	Clashes	Symm-Clashes
1	A	1766	1772	1768	12	0
2	B	2558	2468	2470	35	0
3	E	1768	1704	1701	14	0
4	G	391	403	402	2	0
5	R	2275	2360	2360	42	0
6	R	13	12	12	0	0
All	All	8771	8719	8713	104	0

The all-atom clashscore is defined as the number of clashes found per 1000 atoms (including

hydrogen atoms). The all-atom clashscore for this structure is 6.

All (104) close contacts within the same asymmetric unit are listed below, sorted by their clash magnitude.

Atom-1	Atom-2	Interatomic distance (Å)	Clash overlap (Å)
5:R:60:SER:HG	5:R:109:HIS:HE2	1.02	0.89
3:E:73:ASP:OD2	3:E:76:LYS:NZ	2.06	0.89
2:B:290:ASP:OD1	2:B:314:ARG:NE	2.12	0.81
1:A:230:TYR:OH	1:A:281:SER:OG	2.03	0.73
5:R:43:VAL:HG11	5:R:59:VAL:CG2	2.19	0.73
1:A:338:ALA:O	1:A:342:VAL:HG23	1.91	0.71
1:A:202:GLY:O	1:A:205:ARG:NH2	2.24	0.71
5:R:25:LEU:O	5:R:29:ILE:HD12	1.91	0.70
2:B:163:ASP:O	2:B:164:THR:OG1	2.06	0.70
3:E:202:ARG:NH2	3:E:220:GLU:OE2	2.25	0.70
5:R:298:TRP:O	5:R:302:ILE:HD12	1.92	0.69
2:B:200:VAL:HG12	2:B:234:PHE:CE1	2.29	0.67
5:R:70:VAL:HG23	5:R:71:LEU:CD2	2.25	0.67
3:E:109:ASP:OD1	3:E:110:PHE:N	2.28	0.66
1:A:293:SER:N	1:A:298:GLU:OE1	2.29	0.66
2:B:159:THR:HG1	2:B:169:TRP:HE1	1.44	0.64
2:B:87:THR:O	2:B:87:THR:HG22	1.98	0.64
3:E:210:THR:HG22	3:E:210:THR:O	1.99	0.63
3:E:32:PHE:CE1	3:E:100:ILE:HD12	2.35	0.61
2:B:137:ARG:NH1	2:B:172:GLU:O	2.34	0.60
5:R:66:LEU:O	5:R:70:VAL:HG22	2.02	0.59
5:R:142:GLY:O	5:R:146:VAL:HG12	2.04	0.57
2:B:249:THR:HG22	2:B:265:SER:HB3	1.87	0.57
3:E:98:ARG:NH1	3:E:109:ASP:OD2	2.39	0.55
3:E:63:THR:HG23	3:E:64:VAL:HG13	1.89	0.55
5:R:111:CYS:O	5:R:115:LEU:HD23	2.07	0.55
2:B:146:LEU:HD21	2:B:149:CYS:SG	2.47	0.55
5:R:313:PHE:O	5:R:319:ARG:NH1	2.40	0.55
5:R:70:VAL:HG23	5:R:71:LEU:HD22	1.88	0.54
2:B:189:SER:OG	2:B:232:ILE:HG22	2.07	0.53
2:B:196:THR:HG22	2:B:196:THR:O	2.09	0.53
5:R:43:VAL:HG11	5:R:59:VAL:HG22	1.90	0.53
1:A:283:LEU:HD11	1:A:303:ILE:HD11	1.90	0.52
2:B:51:LEU:HD23	2:B:82:TRP:CD2	2.44	0.52
3:E:91:THR:HG23	3:E:91:THR:O	2.09	0.52
2:B:166:CYS:O	2:B:180:PHE:N	2.43	0.52
5:R:171:LYS:HE2	5:R:171:LYS:HA	1.92	0.51
5:R:69:SER:HA	5:R:73:MET:HE1	1.93	0.51

Continued on next page...

Continued from previous page...

Atom-1	Atom-2	Interatomic distance (Å)	Clash overlap (Å)
2:B:56:ALA:O	2:B:334:SER:OG	2.21	0.51
1:A:295:THR:OG1	1:A:297:GLU:OE1	2.28	0.50
1:A:318:GLU:OE1	1:A:345:LYS:NZ	2.45	0.50
1:A:225:VAL:HG23	1:A:268:LEU:HD13	1.93	0.50
1:A:227:LEU:HG	1:A:268:LEU:HD12	1.93	0.50
5:R:69:SER:HA	5:R:73:MET:CE	2.42	0.50
5:R:43:VAL:HG11	5:R:59:VAL:HG21	1.94	0.50
5:R:314:LEU:HD12	5:R:314:LEU:O	2.12	0.50
2:B:254:ASP:OD2	4:G:33:ALA:HB1	2.12	0.49
5:R:107:ILE:HG21	5:R:199:ALA:O	2.12	0.49
5:R:103:THR:HG23	5:R:271:TRP:CH2	2.48	0.49
2:B:115:GLY:HA3	2:B:146:LEU:HD23	1.95	0.49
5:R:127:VAL:HG22	5:R:127:VAL:O	2.13	0.48
1:A:41:ALA:O	1:A:46:LYS:NZ	2.39	0.47
5:R:54:THR:HG1	5:R:128:TYR:HH	1.58	0.47
2:B:38:ASP:OD1	2:B:39:PRO:HD2	2.15	0.47
2:B:137:ARG:NE	2:B:171:ILE:O	2.48	0.47
2:B:291:ASP:O	2:B:291:ASP:OD1	2.32	0.46
5:R:202:ILE:HB	5:R:203:PRO:HD3	1.97	0.46
5:R:81:VAL:HG23	5:R:82:GLN:N	2.31	0.46
3:E:32:PHE:CD1	3:E:100:ILE:HD12	2.51	0.46
2:B:51:LEU:HD23	2:B:82:TRP:CG	2.50	0.46
5:R:215:TYR:CE1	5:R:257:ALA:HB2	2.51	0.45
2:B:226:GLU:HA	2:B:226:GLU:OE1	2.17	0.45
3:E:159:CYS:SG	3:E:160:ARG:N	2.89	0.45
1:A:9:ASP:O	1:A:13:VAL:HG23	2.16	0.45
2:B:153:ASP:OD1	2:B:156:GLN:N	2.39	0.45
2:B:251:ARG:NE	2:B:260:GLU:OE2	2.50	0.44
5:R:119:TYR:HE2	5:R:132:MET:HE3	1.81	0.44
5:R:68:VAL:HG12	5:R:73:MET:HE1	1.98	0.44
5:R:298:TRP:O	5:R:301:TYR:N	2.50	0.44
2:B:66:ASP:O	2:B:67:SER:OG	2.26	0.44
5:R:104:THR:HG21	5:R:151:ILE:HD11	2.01	0.43
3:E:87:ARG:HG2	3:E:88:SER:N	2.33	0.43
5:R:143:GLY:HA2	5:R:146:VAL:HG12	1.99	0.43
2:B:90:VAL:HG12	2:B:91:HIS:ND1	2.33	0.43
5:R:70:VAL:HG23	5:R:71:LEU:HD23	1.97	0.43
2:B:146:LEU:HD12	2:B:160:SER:O	2.18	0.43
5:R:29:ILE:HD11	5:R:298:TRP:HH2	1.84	0.43
5:R:76:GLY:O	5:R:80:LEU:HD13	2.19	0.43
3:E:18:ARG:HD3	3:E:19:LYS:H	1.84	0.42

Continued on next page...

Continued from previous page...

Atom-1	Atom-2	Interatomic distance (Å)	Clash overlap (Å)
5:R:73:MET:N	5:R:74:PRO:HD2	2.34	0.42
2:B:54:HIS:HE2	2:B:72:SER:HG	1.67	0.42
5:R:40:MET:CE	5:R:62:ALA:HB3	2.49	0.42
5:R:205:LEU:C	5:R:205:LEU:HD23	2.40	0.42
2:B:59:TYR:CE1	2:B:332:TRP:NE1	2.88	0.42
2:B:120:ILE:HD12	2:B:120:ILE:H	1.85	0.42
3:E:38:ARG:NH1	3:E:46:GLU:OE2	2.47	0.42
5:R:211:TYR:CD1	5:R:260:LEU:HD22	2.55	0.42
5:R:119:TYR:CD1	5:R:123:CYS:HB2	2.55	0.42
5:R:25:LEU:HD23	5:R:298:TRP:CZ2	2.55	0.41
5:R:105:ALA:O	5:R:109:HIS:ND1	2.53	0.41
2:B:286:LEU:HD22	2:B:327:VAL:HG11	2.02	0.41
5:R:99:ASP:OD2	5:R:301:TYR:OH	2.20	0.41
5:R:204:PHE:O	5:R:208:VAL:HG23	2.20	0.41
2:B:235:PHE:CD1	2:B:236:PRO:HD3	2.56	0.41
2:B:220:GLN:NE2	2:B:258:ASP:OD2	2.38	0.41
2:B:87:THR:O	2:B:87:THR:CG2	2.68	0.40
5:R:101:LEU:HD12	5:R:148:PRO:HB2	2.02	0.40
2:B:90:VAL:HG12	2:B:91:HIS:CE1	2.55	0.40
1:A:32:ARG:HH21	1:A:32:ARG:HG3	1.87	0.40
2:B:270:ILE:O	2:B:270:ILE:HG22	2.20	0.40
5:R:22:LEU:HD13	5:R:81:VAL:HG11	2.02	0.40
2:B:58:ILE:HG21	2:B:336:LEU:HD21	2.03	0.40
3:E:210:THR:O	3:E:210:THR:CG2	2.67	0.40
4:G:51:LEU:HD23	4:G:51:LEU:O	2.21	0.40

There are no symmetry-related clashes.

5.3 Torsion angles [i](#)

5.3.1 Protein backbone [i](#)

In the following table, the Percentiles column shows the percent Ramachandran outliers of the chain as a percentile score with respect to all PDB entries followed by that with respect to all EM entries.

The Analysed column shows the number of residues for which the backbone conformation was analysed, and the total number of residues.

Mol	Chain	Analysed	Favoured	Allowed	Outliers	Percentiles
1	A	213/354 (60%)	211 (99%)	2 (1%)	0	100 100

Continued on next page...

Continued from previous page...

Mol	Chain	Analysed	Favoured	Allowed	Outliers	Percentiles	
2	B	331/345 (96%)	326 (98%)	5 (2%)	0	100	100
3	E	226/249 (91%)	220 (97%)	6 (3%)	0	100	100
4	G	48/71 (68%)	48 (100%)	0	0	100	100
5	R	279/527 (53%)	272 (98%)	7 (2%)	0	100	100
All	All	1097/1546 (71%)	1077 (98%)	20 (2%)	0	100	100

There are no Ramachandran outliers to report.

5.3.2 Protein sidechains [i](#)

In the following table, the Percentiles column shows the percent sidechain outliers of the chain as a percentile score with respect to all PDB entries followed by that with respect to all EM entries.

The Analysed column shows the number of residues for which the sidechain conformation was analysed, and the total number of residues.

Mol	Chain	Analysed	Rotameric	Outliers	Percentiles	
1	A	195/305 (64%)	195 (100%)	0	100	100
2	B	276/287 (96%)	276 (100%)	0	100	100
3	E	195/202 (96%)	195 (100%)	0	100	100
4	G	42/58 (72%)	42 (100%)	0	100	100
5	R	253/458 (55%)	253 (100%)	0	100	100
All	All	961/1310 (73%)	961 (100%)	0	100	100

There are no protein residues with a non-rotameric sidechain to report.

Sometimes sidechains can be flipped to improve hydrogen bonding and reduce clashes. All (1) such sidechains are listed below:

Mol	Chain	Res	Type
3	E	142	GLN

5.3.3 RNA [i](#)

There are no RNA molecules in this entry.

5.4 Non-standard residues in protein, DNA, RNA chains [i](#)

There are no non-standard protein/DNA/RNA residues in this entry.

5.5 Carbohydrates [i](#)

There are no monosaccharides in this entry.

5.6 Ligand geometry [i](#)

1 ligand is modelled in this entry.

In the following table, the Counts columns list the number of bonds (or angles) for which Mogul statistics could be retrieved, the number of bonds (or angles) that are observed in the model and the number of bonds (or angles) that are defined in the Chemical Component Dictionary. The Link column lists molecule types, if any, to which the group is linked. The Z score for a bond length (or angle) is the number of standard deviations the observed value is removed from the expected value. A bond length (or angle) with $|Z| > 2$ is considered an outlier worth inspection. RMSZ is the root-mean-square of all Z scores of the bond lengths (or angles).

Mol	Type	Chain	Res	Link	Bond lengths			Bond angles		
					Counts	RMSZ	# Z > 2	Counts	RMSZ	# Z > 2
6	SRO	R	401	-	12,14,14	2.86	6 (50%)	12,19,19	1.80	1 (8%)

In the following table, the Chirals column lists the number of chiral outliers, the number of chiral centers analysed, the number of these observed in the model and the number defined in the Chemical Component Dictionary. Similar counts are reported in the Torsion and Rings columns. '-' means no outliers of that kind were identified.

Mol	Type	Chain	Res	Link	Chirals	Torsions	Rings
6	SRO	R	401	-	-	1/3/3/3	0/2/2/2

All (6) bond length outliers are listed below:

Mol	Chain	Res	Type	Atoms	Z	Observed(Å)	Ideal(Å)
6	R	401	SRO	CZ2-CH2	7.58	1.52	1.36
6	R	401	SRO	CZ2-CE2	-3.57	1.35	1.41
6	R	401	SRO	CH2-CZ3	2.60	1.43	1.38
6	R	401	SRO	CE3-CD2	-2.58	1.37	1.42
6	R	401	SRO	CE3-CZ3	2.55	1.42	1.37
6	R	401	SRO	CD1-NE1	-2.30	1.31	1.36

All (1) bond angle outliers are listed below:

Mol	Chain	Res	Type	Atoms	Z	Observed(°)	Ideal(°)
6	R	401	SRO	CZ2-CH2-CZ3	-5.03	114.36	120.15

There are no chirality outliers.

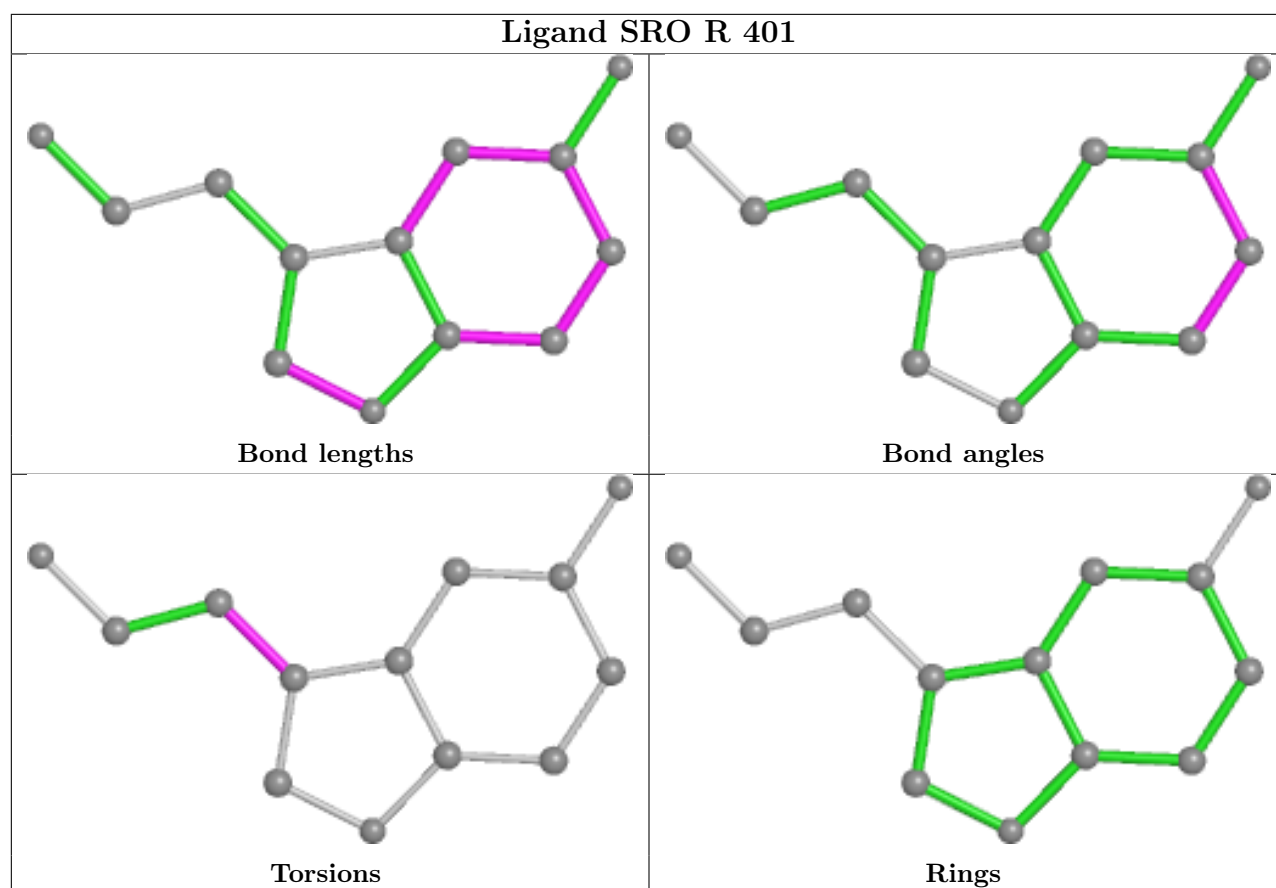
All (1) torsion outliers are listed below:

Mol	Chain	Res	Type	Atoms
6	R	401	SRO	CA-CB-CG-CD2

There are no ring outliers.

No monomer is involved in short contacts.

The following is a two-dimensional graphical depiction of Mogul quality analysis of bond lengths, bond angles, torsion angles, and ring geometry for all instances of the Ligand of Interest. In addition, ligands with molecular weight > 250 and outliers as shown on the validation Tables will also be included. For torsion angles, if less than 5% of the Mogul distribution of torsion angles is within 10 degrees of the torsion angle in question, then that torsion angle is considered an outlier. Any bond that is central to one or more torsion angles identified as an outlier by Mogul will be highlighted in the graph. For rings, the root-mean-square deviation (RMSD) between the ring in question and similar rings identified by Mogul is calculated over all ring torsion angles. If the average RMSD is greater than 60 degrees and the minimal RMSD between the ring in question and any Mogul-identified rings is also greater than 60 degrees, then that ring is considered an outlier. The outliers are highlighted in purple. The color gray indicates Mogul did not find sufficient equivalents in the CSD to analyse the geometry.



5.7 Other polymers [\(i\)](#)

There are no such residues in this entry.

5.8 Polymer linkage issues [\(i\)](#)

There are no chain breaks in this entry.

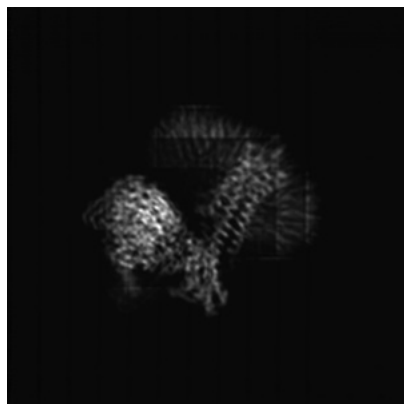
6 Map visualisation [i](#)

This section contains visualisations of the EMDB entry EMD-33444. These allow visual inspection of the internal detail of the map and identification of artifacts.

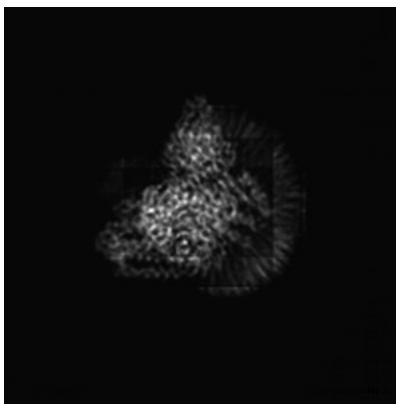
Images derived from a raw map, generated by summing the deposited half-maps, are presented below the corresponding image components of the primary map to allow further visual inspection and comparison with those of the primary map.

6.1 Orthogonal projections [i](#)

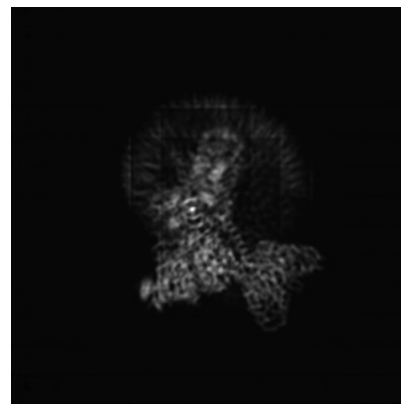
6.1.1 Primary map



X

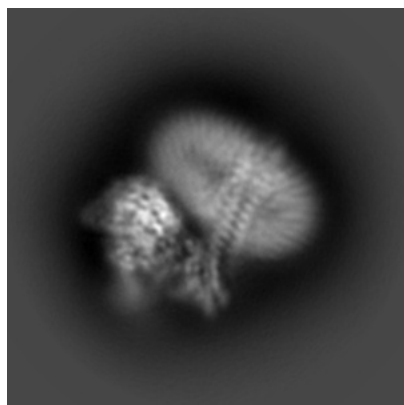


Y

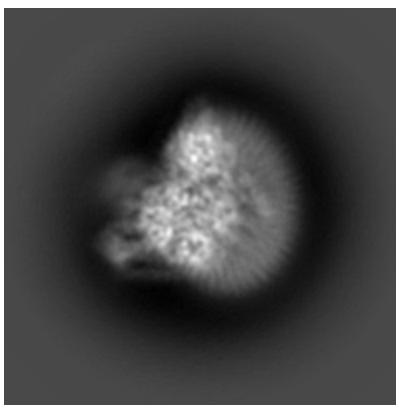


Z

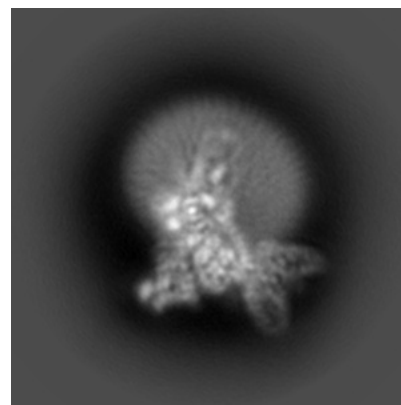
6.1.2 Raw map



X



Y



Z

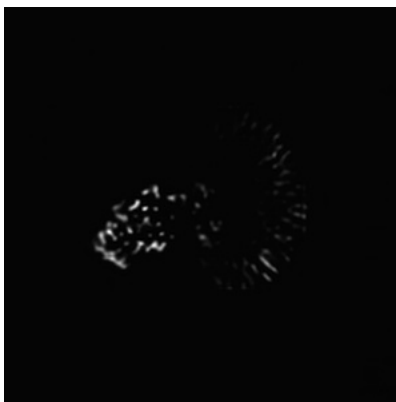
The images above show the map projected in three orthogonal directions.

6.2 Central slices [i](#)

6.2.1 Primary map



X Index: 100

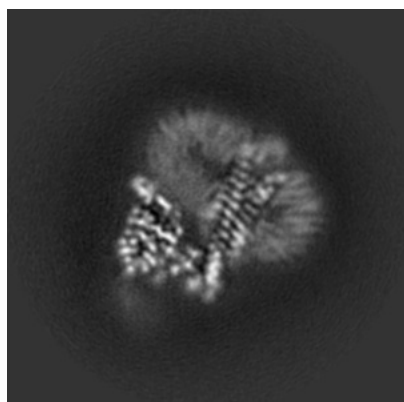


Y Index: 100

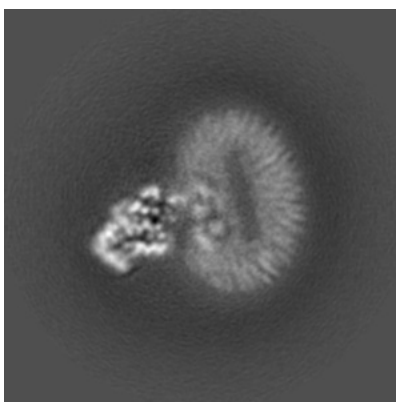


Z Index: 100

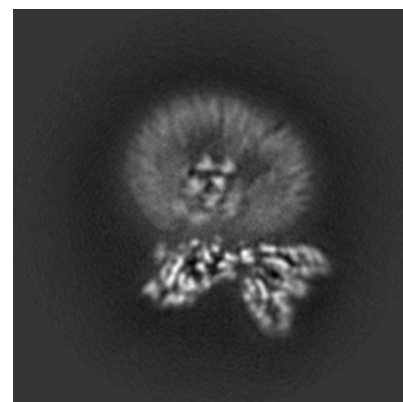
6.2.2 Raw map



X Index: 100



Y Index: 100



Z Index: 100

The images above show central slices of the map in three orthogonal directions.

6.3 Largest variance slices [i](#)

6.3.1 Primary map



X Index: 98

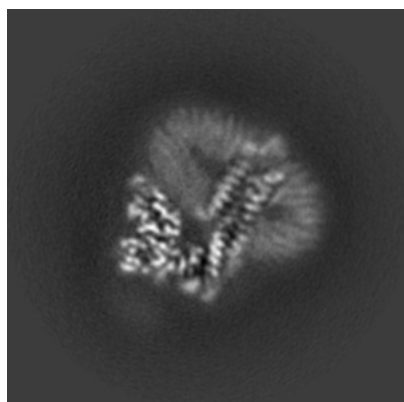


Y Index: 71

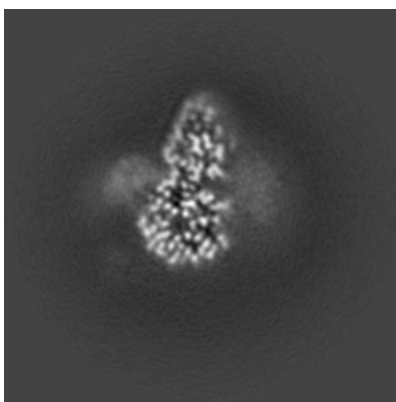


Z Index: 94

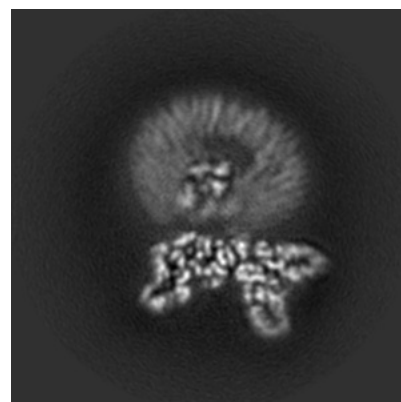
6.3.2 Raw map



X Index: 97



Y Index: 71

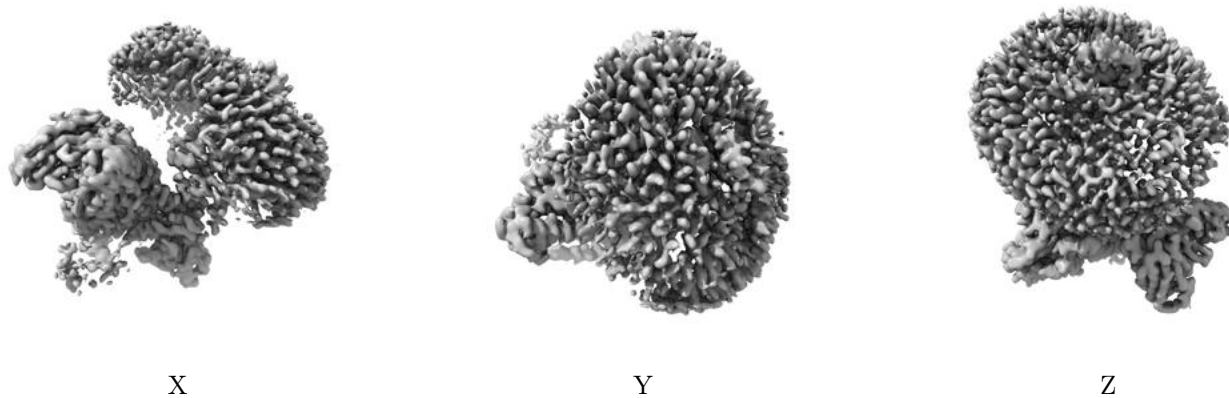


Z Index: 95

The images above show the largest variance slices of the map in three orthogonal directions.

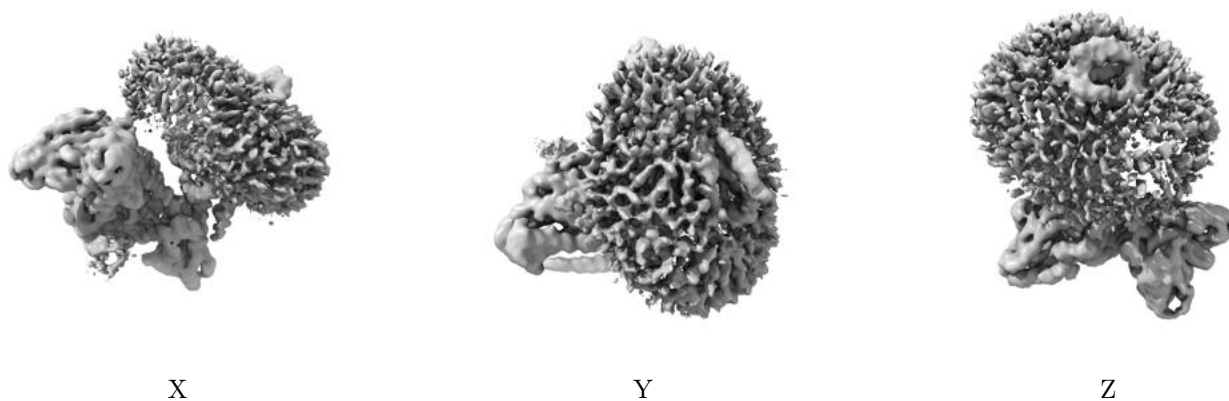
6.4 Orthogonal surface views [i](#)

6.4.1 Primary map



The images above show the 3D surface view of the map at the recommended contour level 0.04. These images, in conjunction with the slice images, may facilitate assessment of whether an appropriate contour level has been provided.

6.4.2 Raw map



These images show the 3D surface of the raw map. The raw map's contour level was selected so that its surface encloses the same volume as the primary map does at its recommended contour level.

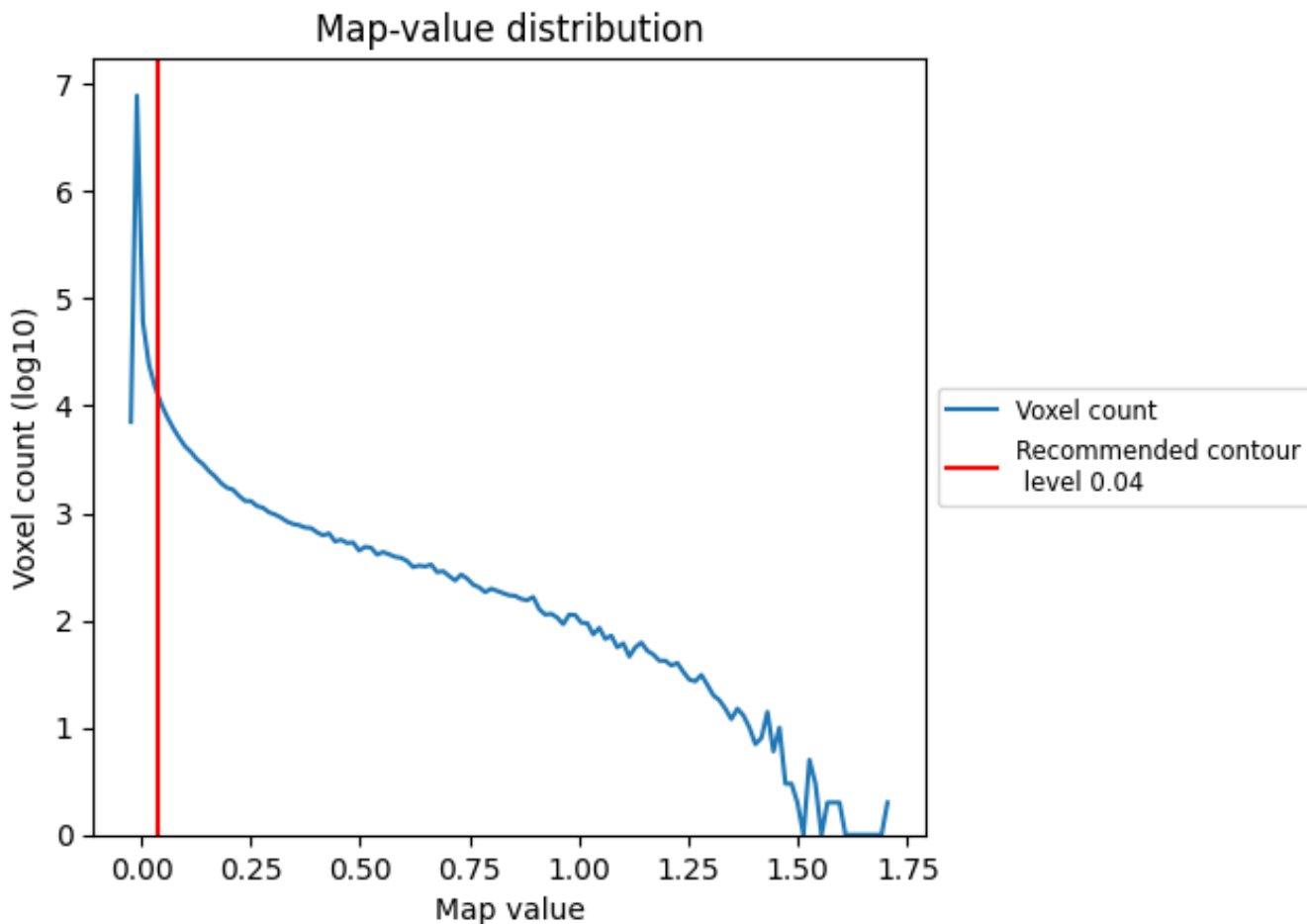
6.5 Mask visualisation [i](#)

This section was not generated. No masks/segmentation were deposited.

7 Map analysis [i](#)

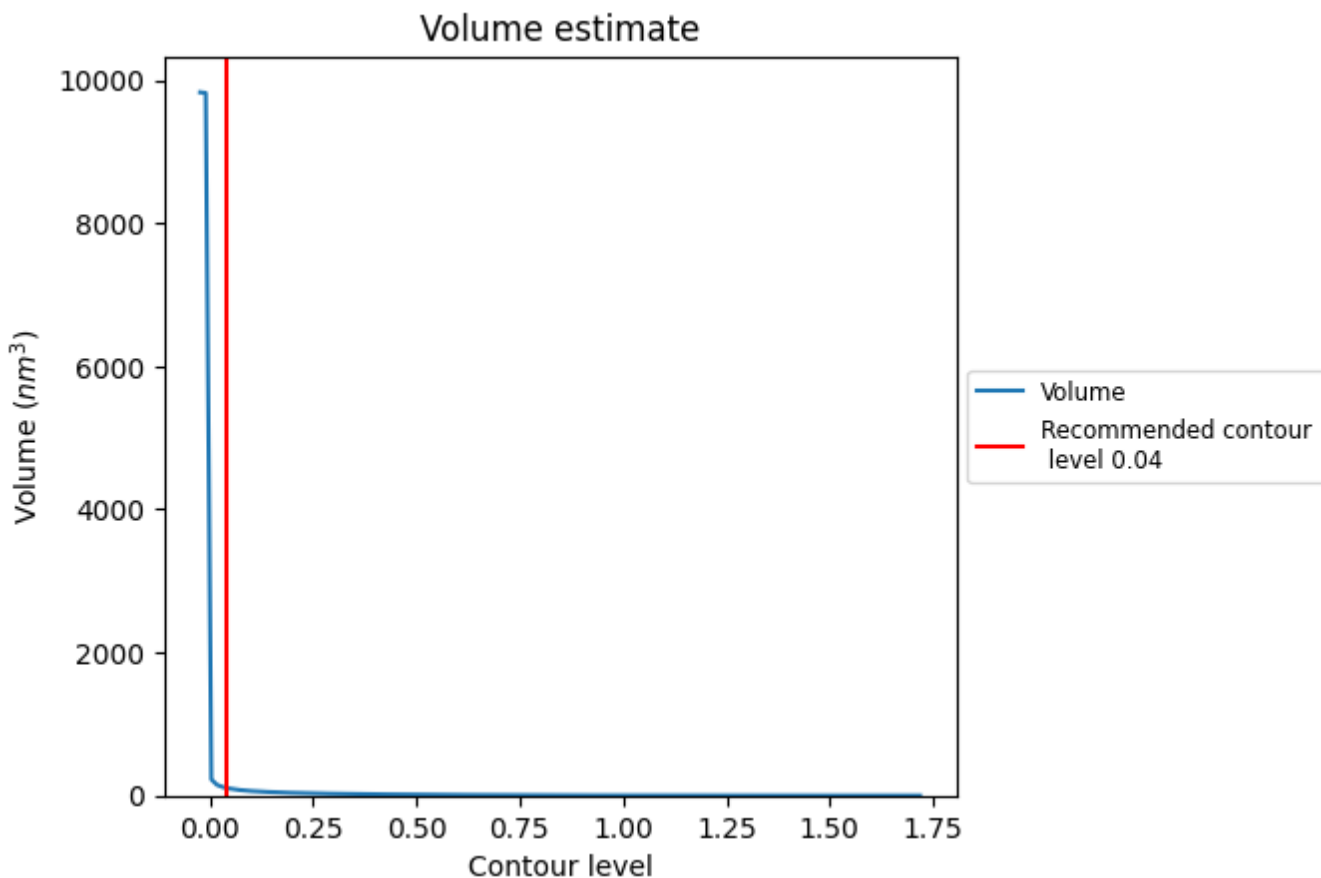
This section contains the results of statistical analysis of the map.

7.1 Map-value distribution [i](#)



The map-value distribution is plotted in 128 intervals along the x-axis. The y-axis is logarithmic. A spike in this graph at zero usually indicates that the volume has been masked.

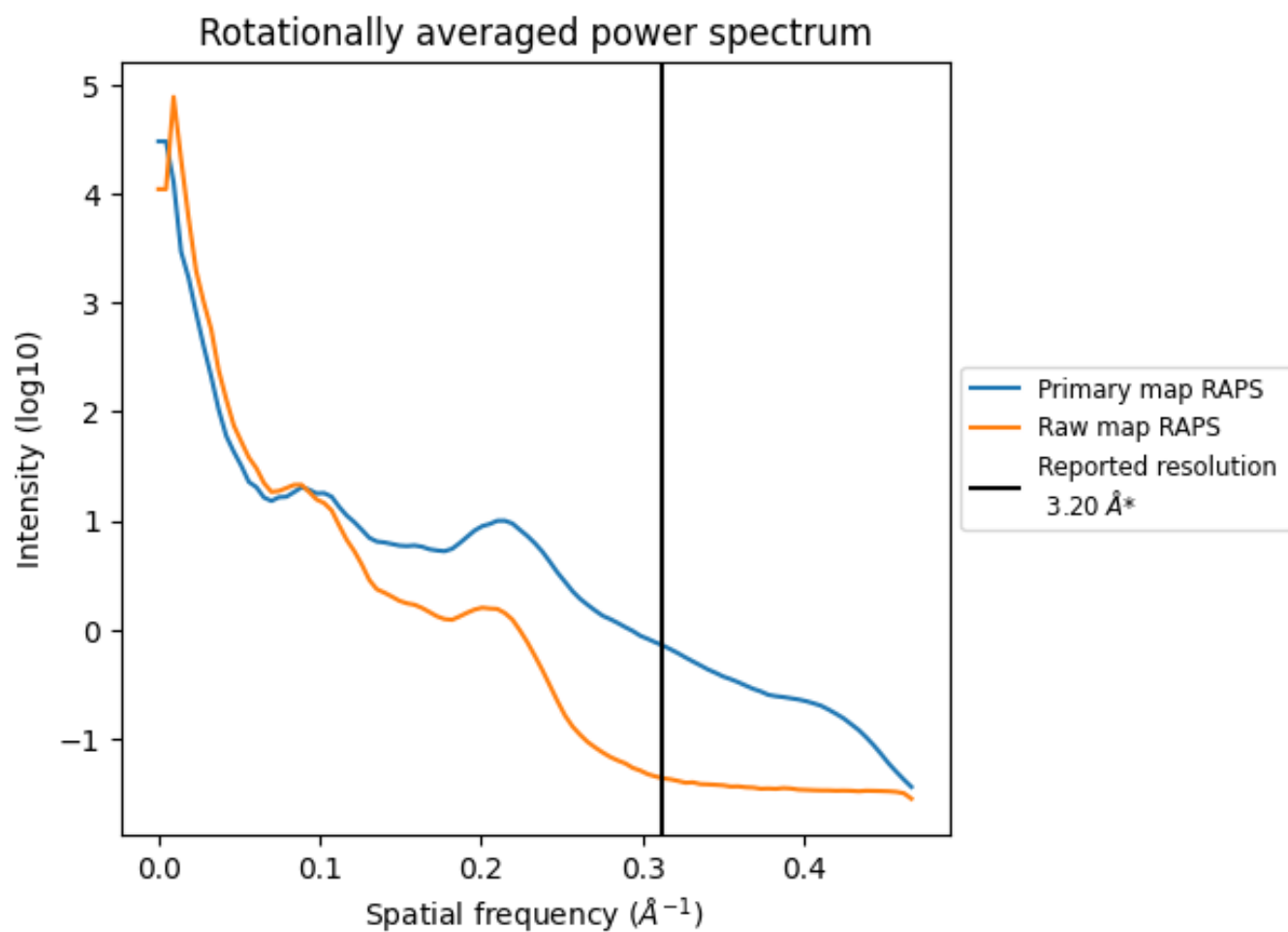
7.2 Volume estimate [i](#)



The volume at the recommended contour level is 108 nm³; this corresponds to an approximate mass of 97 kDa.

The volume estimate graph shows how the enclosed volume varies with the contour level. The recommended contour level is shown as a vertical line and the intersection between the line and the curve gives the volume of the enclosed surface at the given level.

7.3 Rotationally averaged power spectrum [i](#)

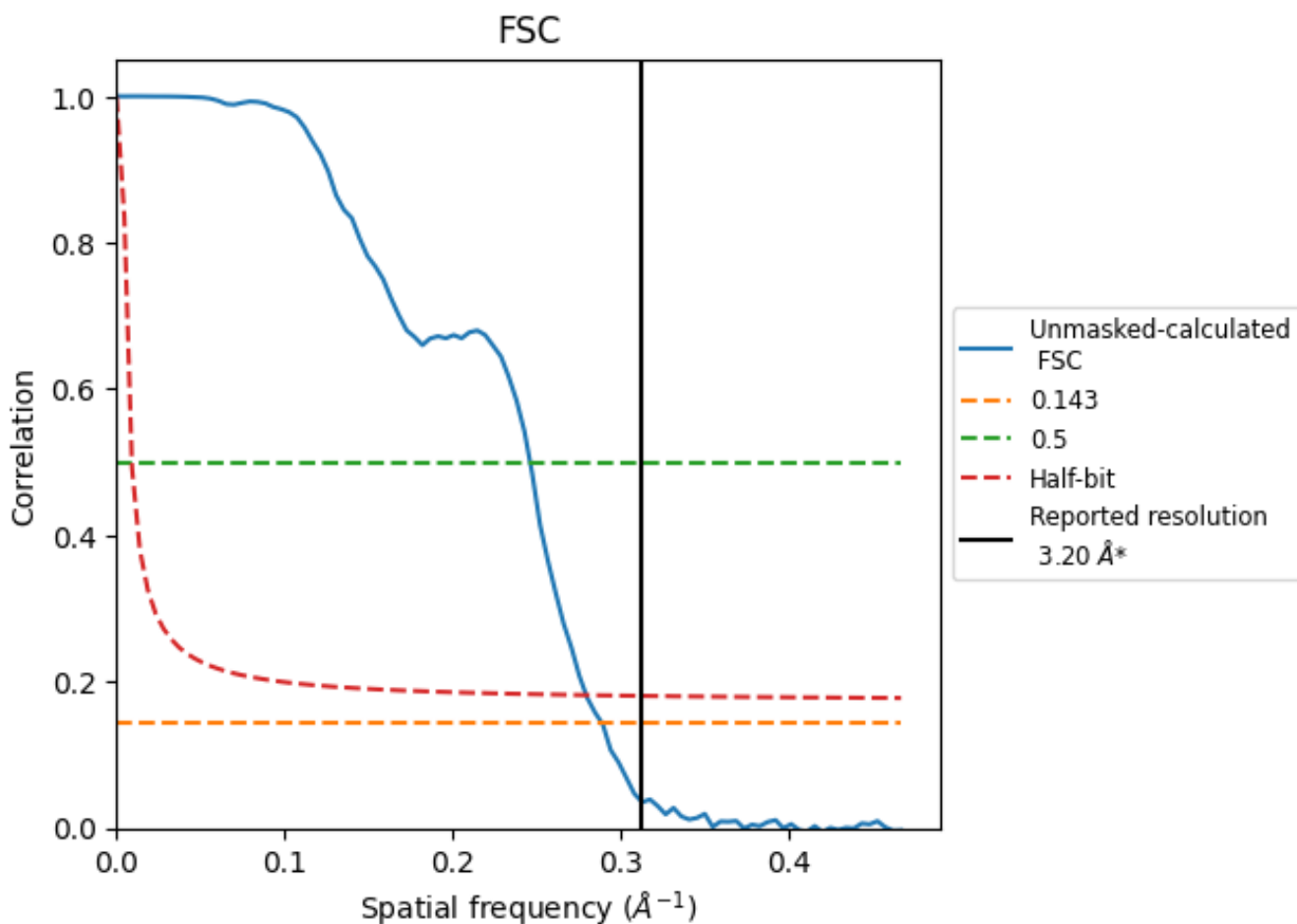


*Reported resolution corresponds to spatial frequency of 0.312 Å⁻¹

8 Fourier-Shell correlation [\(i\)](#)

Fourier-Shell Correlation (FSC) is the most commonly used method to estimate the resolution of single-particle and subtomogram-averaged maps. The shape of the curve depends on the imposed symmetry, mask and whether or not the two 3D reconstructions used were processed from a common reference. The reported resolution is shown as a black line. A curve is displayed for the half-bit criterion in addition to lines showing the 0.143 gold standard cut-off and 0.5 cut-off.

8.1 FSC [\(i\)](#)



*Reported resolution corresponds to spatial frequency of 0.312 Å⁻¹

8.2 Resolution estimates [i](#)

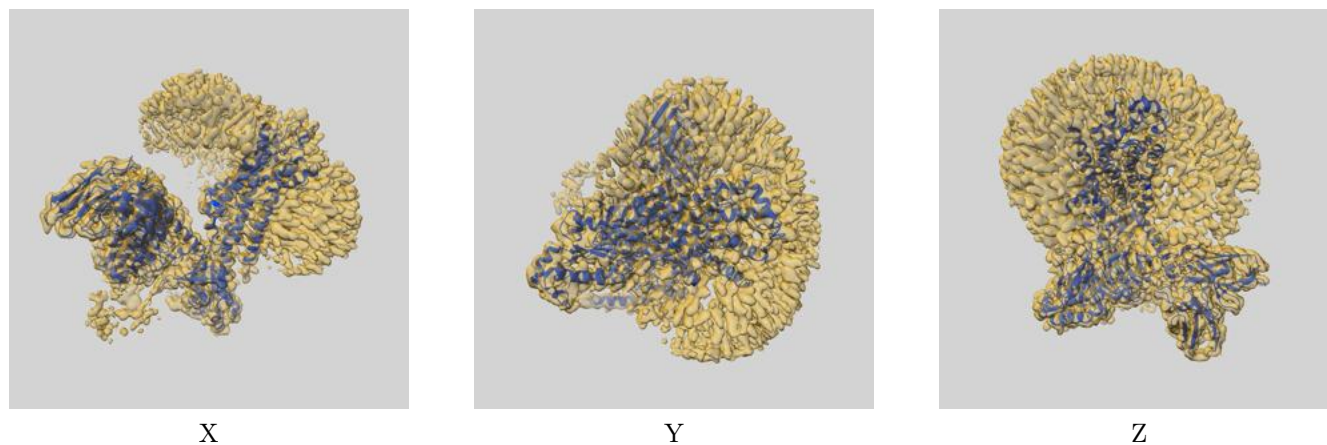
Resolution estimate (Å)	Estimation criterion (FSC cut-off)		
	0.143	0.5	Half-bit
Reported by author	3.20	-	-
Author-provided FSC curve	-	-	-
Unmasked-calculated*	3.46	4.06	3.58

*Resolution estimate based on FSC curve calculated by comparison of deposited half-maps.

9 Map-model fit [i](#)

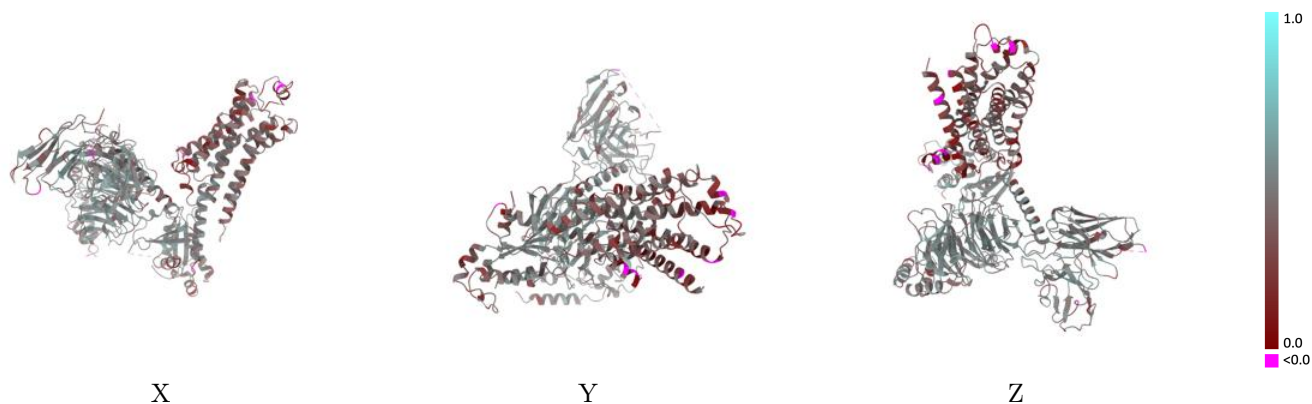
This section contains information regarding the fit between EMDB map EMD-33444 and PDB model 7XTA. Per-residue inclusion information can be found in section 3 on page 6.

9.1 Map-model overlay [i](#)



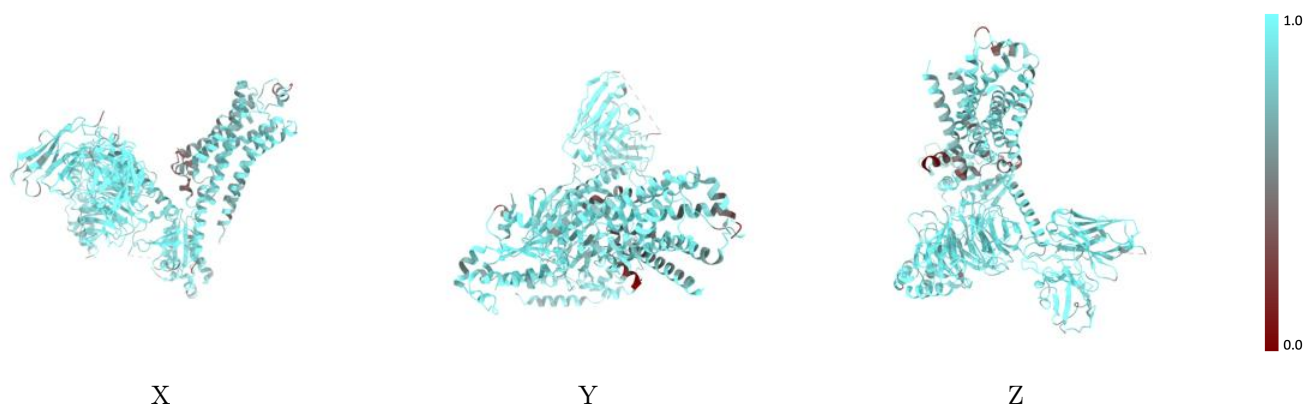
The images above show the 3D surface view of the map at the recommended contour level 0.04 at 50% transparency in yellow overlaid with a ribbon representation of the model coloured in blue. These images allow for the visual assessment of the quality of fit between the atomic model and the map.

9.2 Q-score mapped to coordinate model [\(i\)](#)



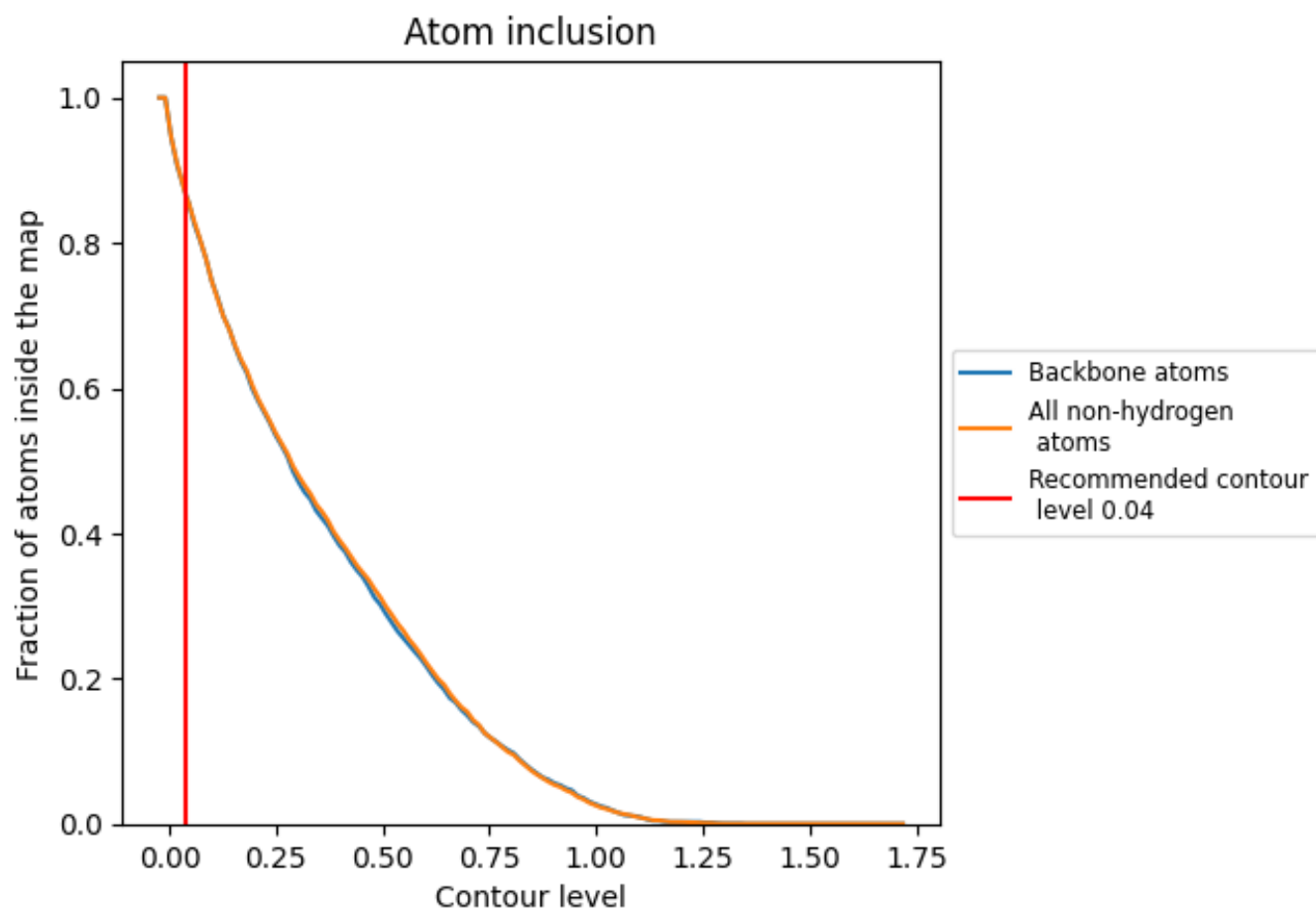
The images above show the model with each residue coloured according to its Q-score. This shows their resolvability in the map with higher Q-score values reflecting better resolvability. Please note: Q-score is calculating the resolvability of atoms, and thus high values are only expected at resolutions at which atoms can be resolved. Low Q-score values may therefore be expected for many entries.

9.3 Atom inclusion mapped to coordinate model [\(i\)](#)



The images above show the model with each residue coloured according to its atom inclusion. This shows to what extent they are inside the map at the recommended contour level (0.04).













9.4 Atom inclusion [i](#)



At the recommended contour level, 86% of all backbone atoms, 86% of all non-hydrogen atoms, are inside the map.

9.5 Map-model fit summary

The table lists the average atom inclusion at the recommended contour level (0.04) and Q-score for the entire model and for each chain.

Chain	Atom inclusion	Q-score
All	 0.8633	 0.4260
A	 0.8840	 0.4380
B	 0.9363	 0.4900
E	 0.9057	 0.4700
G	 0.8724	 0.4300
R	 0.7626	 0.3090

