



# Full wwPDB X-ray Structure Validation Report ⓘ

Aug 3, 2021 – 09:18 am BST

PDB ID : 6XUU  
Title : Crystallographic structure of oligosaccharide dehydrogenase from *Pycnoporus cinnabarinus*, glucose-bound form  
Authors : Cerutti, G.; Savino, C.; Montemiglio, L.C.; Vallone, B.; Sciara, G.  
Deposited on : 2020-01-21  
Resolution : 1.57 Å(reported)

This is a Full wwPDB X-ray Structure Validation Report for a publicly released PDB entry.

We welcome your comments at [validation@mail.wwpdb.org](mailto:validation@mail.wwpdb.org)

A user guide is available at

<https://www.wwpdb.org/validation/2017/XrayValidationReportHelp>

with specific help available everywhere you see the ⓘ symbol.

---

The following versions of software and data (see [references ⓘ](#)) were used in the production of this report:

MolProbity : 4.02b-467  
Mogul : 1.8.5 (274361), CSD as541be (2020)  
Xtriage (Phenix) : 1.13  
EDS : 2.23.1  
buster-report : 1.1.7 (2018)  
Percentile statistics : 20191225.v01 (using entries in the PDB archive December 25th 2019)  
Refmac : 5.8.0158  
CCP4 : 7.0.044 (Gargrove)  
Ideal geometry (proteins) : Engh & Huber (2001)  
Ideal geometry (DNA, RNA) : Parkinson et al. (1996)  
Validation Pipeline (wwPDB-VP) : 2.23.1

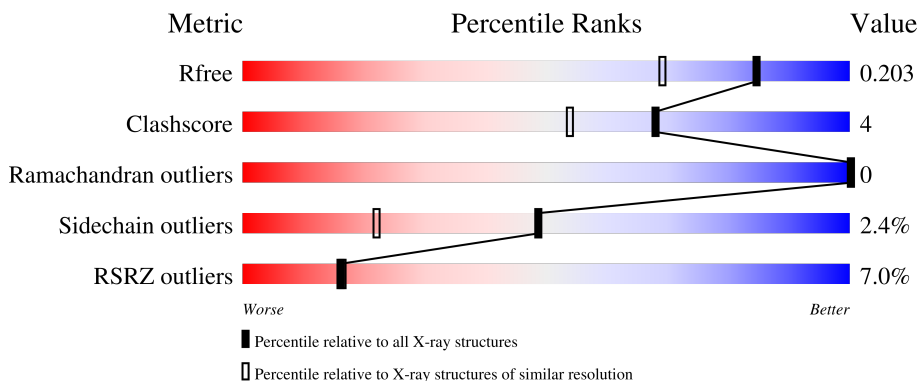
# 1 Overall quality at a glance

The following experimental techniques were used to determine the structure:

*X-RAY DIFFRACTION*

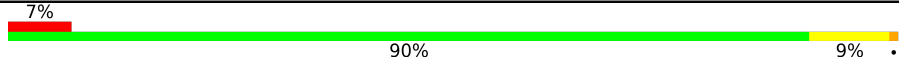
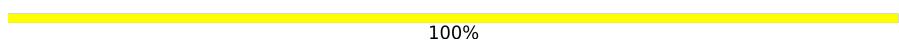
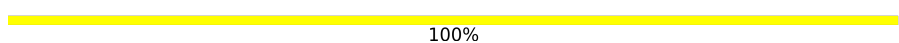
The reported resolution of this entry is 1.57 Å.

Percentile scores (ranging between 0-100) for global validation metrics of the entry are shown in the following graphic. The table shows the number of entries on which the scores are based.



Metric	Whole archive (#Entries)	Similar resolution (#Entries, resolution range(Å))
$R_{free}$	130704	5534 (1.60-1.56)
Clashscore	141614	5861 (1.60-1.56)
Ramachandran outliers	138981	5708 (1.60-1.56)
Sidechain outliers	138945	5703 (1.60-1.56)
RSRZ outliers	127900	5431 (1.60-1.56)

The table below summarises the geometric issues observed across the polymeric chains and their fit to the electron density. The red, orange, yellow and green segments of the lower bar indicate the fraction of residues that contain outliers for  $\geq 3$ , 2, 1 and 0 types of geometric quality criteria respectively. A grey segment represents the fraction of residues that are not modelled. The numeric value for each fraction is indicated below the corresponding segment, with a dot representing fractions  $\leq 5\%$ . The upper red bar (where present) indicates the fraction of residues that have poor fit to the electron density. The numeric value is given above the bar.

Mol	Chain	Length	Quality of chain
1	A	591	 7% 90% 9%
2	B	2	 100%
2	C	2	 100%

The following table lists non-polymeric compounds, carbohydrate monomers and non-standard residues in protein, DNA, RNA chains that are outliers for geometric or electron-density-fit criteria:

Mol	Type	Chain	Res	Chirality	Geometry	Clashes	Electron density
2	NAG	B	2	-	-	-	X
6	NAG	A	615[A]	-	-	-	X
6	NAG	A	615[B]	-	-	-	X

## 2 Entry composition [i](#)

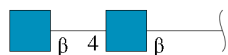
There are 8 unique types of molecules in this entry. The entry contains 5530 atoms, of which 0 are hydrogens and 0 are deuteriums.

In the tables below, the ZeroOcc column contains the number of atoms modelled with zero occupancy, the AltConf column contains the number of residues with at least one atom in alternate conformation and the Trace column contains the number of residues modelled with at most 2 atoms.

- Molecule 1 is a protein called Oligosaccharide dehydrogenase.

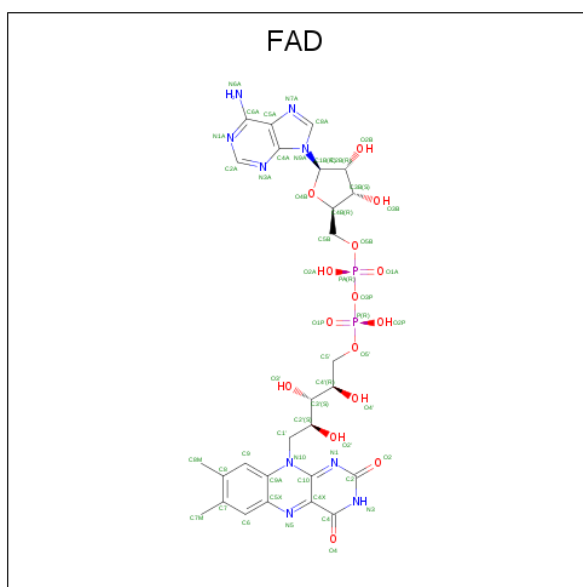
Mol	Chain	Residues	Atoms					ZeroOcc	AltConf	Trace
			Total	C	N	O	S			
1	A	589	4902	3149	807	930	16	0	84	0

- Molecule 2 is an oligosaccharide called 2-acetamido-2-deoxy-beta-D-glucopyranose-(1-4)-2-acetamido-2-deoxy-beta-D-glucopyranose.



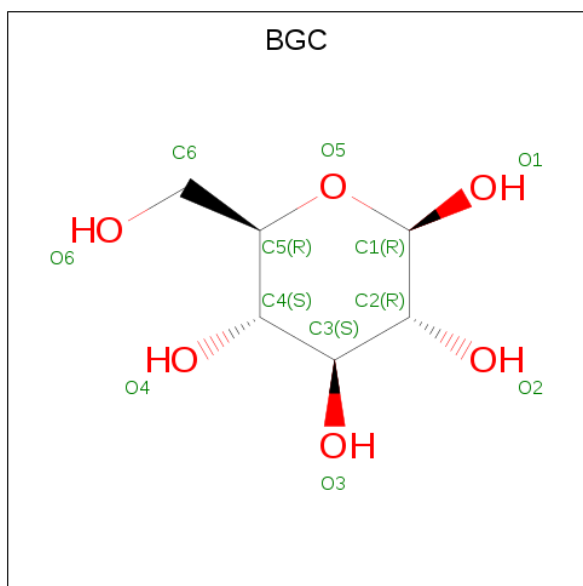
Mol	Chain	Residues	Atoms				ZeroOcc	AltConf	Trace
			Total	C	N	O			
2	B	2	28	16	2	10	0	0	0
2	C	2	28	16	2	10	0	0	0

- Molecule 3 is FLAVIN-ADENINE DINUCLEOTIDE (three-letter code: FAD) (formula: C<sub>27</sub>H<sub>33</sub>N<sub>9</sub>O<sub>15</sub>P<sub>2</sub>) (labeled as "Ligand of Interest" by depositor).



Mol	Chain	Residues	Atoms					ZeroOcc	AltConf
			Total	C	N	O	P		
3	A	1	53	27	9	15	2	0	0

- Molecule 4 is beta-D-glucopyranose (three-letter code: BGC) (formula: C<sub>6</sub>H<sub>12</sub>O<sub>6</sub>).



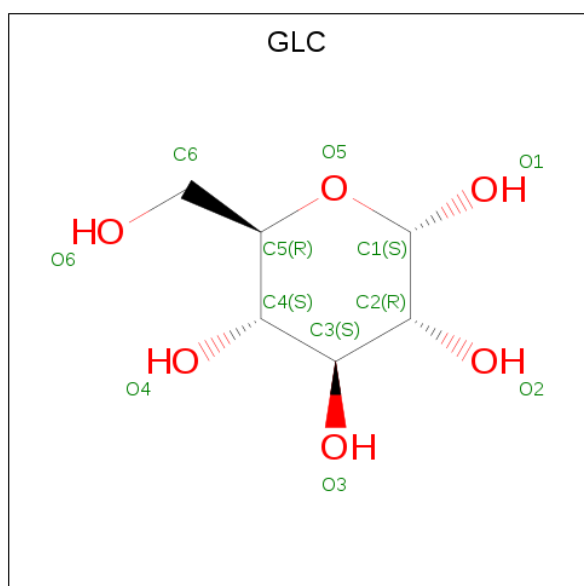
Mol	Chain	Residues	Atoms			ZeroOcc	AltConf
			Total	C	O		
4	A	1	12	6	6	0	0
4	A	1	12	6	6	0	0
4	A	1	12	6	6	0	0

*Continued on next page...*

Continued from previous page...

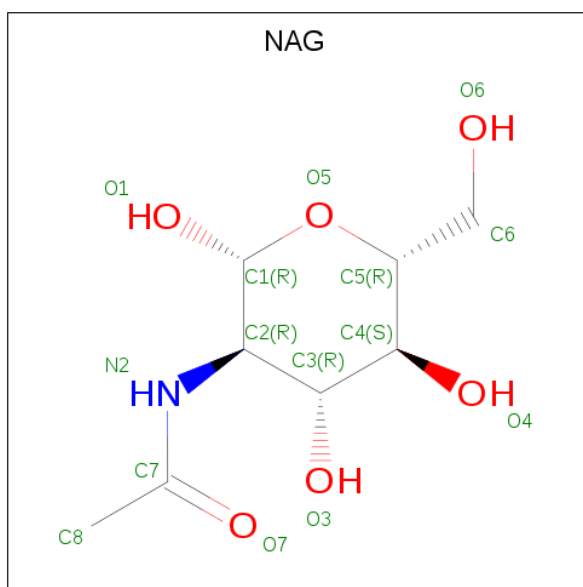
Mol	Chain	Residues	Atoms			ZeroOcc	AltConf
4	A	1	Total	C	O	0	1
			12	6	6		
4	A	1	Total	C	O	0	0
			12	6	6		
4	A	1	Total	C	O	0	0
			12	6	6		
4	A	1	Total	C	O	0	0
			12	6	6		

- Molecule 5 is alpha-D-glucopyranose (three-letter code: GLC) (formula: C<sub>6</sub>H<sub>12</sub>O<sub>6</sub>).



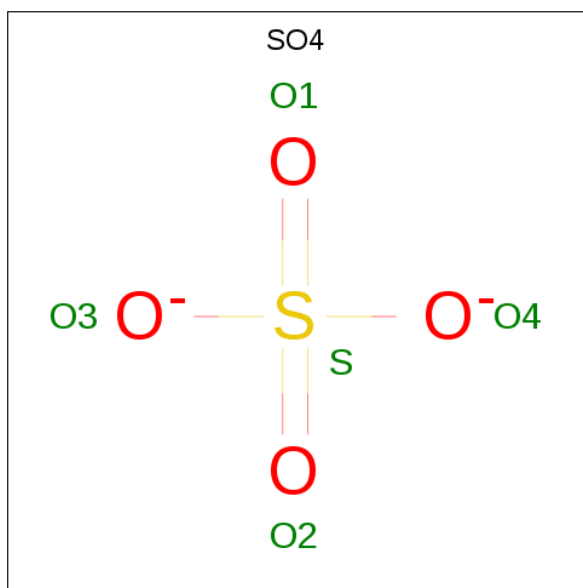
Mol	Chain	Residues	Atoms			ZeroOcc	AltConf
5	A	1	Total	C	O	0	1
			12	6	6		

- Molecule 6 is 2-acetamido-2-deoxy-beta-D-glucopyranose (three-letter code: NAG) (formula: C<sub>8</sub>H<sub>15</sub>NO<sub>6</sub>).



Mol	Chain	Residues	Atoms				ZeroOcc	AltConf
			Total	C	N	O		
6	A	1	28	16	2	10	0	1

- Molecule 7 is SULFATE ION (three-letter code: SO<sub>4</sub>) (formula: O<sub>4</sub>S).



Mol	Chain	Residues	Atoms			ZeroOcc	AltConf
			Total	O	S		
7	A	1	5	4	1	0	0
7	A	1	5	4	1	0	0
7	A	1	5	4	1	0	0

*Continued on next page...*

*Continued from previous page...*

Mol	Chain	Residues	Atoms			ZeroOcc	AltConf
7	A	1	Total	O	S	0	0
			5	4	1		

- Molecule 8 is water.

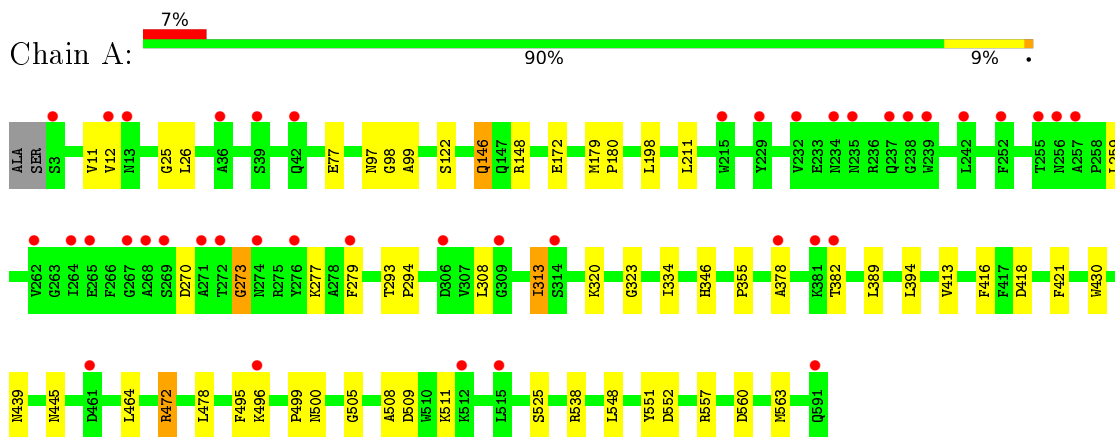
Mol	Chain	Residues	Atoms		ZeroOcc	AltConf
8	A	354	Total	O	0	14
			363	363		



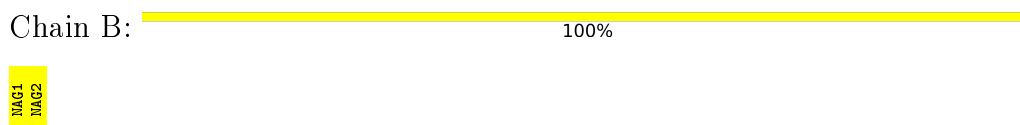
### 3 Residue-property plots [i](#)

These plots are drawn for all protein, RNA, DNA and oligosaccharide chains in the entry. The first graphic for a chain summarises the proportions of the various outlier classes displayed in the second graphic. The second graphic shows the sequence view annotated by issues in geometry and electron density. Residues are color-coded according to the number of geometric quality criteria for which they contain at least one outlier: green = 0, yellow = 1, orange = 2 and red = 3 or more. A red dot above a residue indicates a poor fit to the electron density ( $RSRZ > 2$ ). Stretches of 2 or more consecutive residues without any outlier are shown as a green connector. Residues present in the sample, but not in the model, are shown in grey.

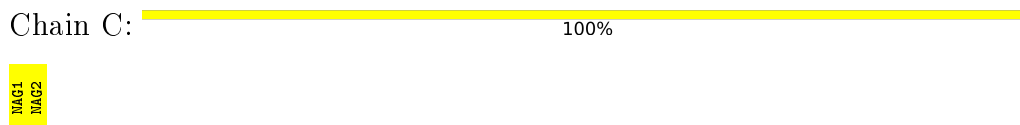
- Molecule 1: Oligosaccharide dehydrogenase



- Molecule 2: 2-acetamido-2-deoxy-beta-D-glucopyranose-(1-4)-2-acetamido-2-deoxy-beta-D-glucopyranose



- Molecule 2: 2-acetamido-2-deoxy-beta-D-glucopyranose-(1-4)-2-acetamido-2-deoxy-beta-D-glucopyranose



## 4 Data and refinement statistics

Property	Value	Source
Space group	P 21 21 21	Depositor
Cell constants a, b, c, $\alpha$ , $\beta$ , $\gamma$	49.14Å 61.62Å 195.95Å 90.00° 90.00° 90.00°	Depositor
Resolution (Å)	49.04 – 1.57 48.99 – 1.57	Depositor EDS
% Data completeness (in resolution range)	99.5 (49.04-1.57) 99.5 (48.99-1.57)	Depositor EDS
$R_{merge}$	(Not available)	Depositor
$R_{sym}$	(Not available)	Depositor
$\langle I/\sigma(I) \rangle$ <sup>1</sup>	1.88 (at 1.57Å)	Xtrriage
Refinement program	REFMAC 5.8.0258	Depositor
R, $R_{free}$	0.162 , 0.189 0.175 , 0.203	Depositor DCC
$R_{free}$ test set	4200 reflections (5.01%)	wwPDB-VP
Wilson B-factor (Å <sup>2</sup> )	20.0	Xtrriage
Anisotropy	0.676	Xtrriage
Bulk solvent $k_{sol}$ (e/Å <sup>3</sup> ), $B_{sol}$ (Å <sup>2</sup> )	0.42 , 54.1	EDS
L-test for twinning <sup>2</sup>	$\langle  L  \rangle = 0.45$ , $\langle L^2 \rangle = 0.27$	Xtrriage
Estimated twinning fraction	No twinning to report.	Xtrriage
$F_o, F_c$ correlation	0.97	EDS
Total number of atoms	5530	wwPDB-VP
Average B, all atoms (Å <sup>2</sup> )	38.0	wwPDB-VP

Xtrriage's analysis on translational NCS is as follows: *The largest off-origin peak in the Patterson function is 4.77% of the height of the origin peak. No significant pseudotranslation is detected.*

<sup>1</sup>Intensities estimated from amplitudes.

<sup>2</sup>Theoretical values of  $\langle |L| \rangle$ ,  $\langle L^2 \rangle$  for acentric reflections are 0.5, 0.333 respectively for untwinned datasets, and 0.375, 0.2 for perfectly twinned datasets.

## 5 Model quality [i](#)

### 5.1 Standard geometry [i](#)

Bond lengths and bond angles in the following residue types are not validated in this section: GLC, NAG, SO4, FAD, BGC

The Z score for a bond length (or angle) is the number of standard deviations the observed value is removed from the expected value. A bond length (or angle) with  $|Z| > 5$  is considered an outlier worth inspection. RMSZ is the root-mean-square of all Z scores of the bond lengths (or angles).

Mol	Chain	Bond lengths		Bond angles	
		RMSZ	# Z  >5	RMSZ	# Z  >5
1	A	0.85	6/5219 (0.1%)	0.91	0/7101

Chiral center outliers are detected by calculating the chiral volume of a chiral center and verifying if the center is modelled as a planar moiety or with the opposite hand. A planarity outlier is detected by checking planarity of atoms in a peptide group, atoms in a mainchain group or atoms of a sidechain that are expected to be planar.

Mol	Chain	#Chirality outliers	#Planarity outliers
1	A	0	1

All (6) bond length outliers are listed below:

Mol	Chain	Res	Type	Atoms	Z	Observed(Å)	Ideal(Å)
1	A	313[A]	ILE	C-O	6.47	1.35	1.23
1	A	313[B]	ILE	C-O	6.47	1.35	1.23
1	A	273[A]	GLY	CA-C	6.26	1.61	1.51
1	A	273[B]	GLY	CA-C	6.26	1.61	1.51
1	A	273[A]	GLY	C-N	5.11	1.45	1.34
1	A	273[B]	GLY	C-N	5.11	1.45	1.34

There are no bond angle outliers.

There are no chirality outliers.

All (1) planarity outliers are listed below:

Mol	Chain	Res	Type	Group
1	A	273[B]	GLY	Mainchain

## 5.2 Too-close contacts [\(i\)](#)

In the following table, the Non-H and H(model) columns list the number of non-hydrogen atoms and hydrogen atoms in the chain respectively. The H(added) column lists the number of hydrogen atoms added and optimized by MolProbity. The Clashes column lists the number of clashes within the asymmetric unit, whereas Symm-Clashes lists symmetry-related clashes.

Mol	Chain	Non-H	H(model)	H(added)	Clashes	Symm-Clashes
1	A	4902	0	4968	33	0
2	B	28	0	25	0	0
2	C	28	0	25	0	0
3	A	53	0	31	3	0
4	A	96	0	96	1	0
5	A	12	0	12	4	0
6	A	28	0	26	2	0
7	A	20	0	0	2	0
8	A	363	0	0	6	0
All	All	5530	0	5183	39	0

The all-atom clashscore is defined as the number of clashes found per 1000 atoms (including hydrogen atoms). The all-atom clashscore for this structure is 4.

All (39) close contacts within the same asymmetric unit are listed below, sorted by their clash magnitude.

Atom-1	Atom-2	Interatomic distance (Å)	Clash overlap (Å)
4:A:609[A]:BGC:O4	8:A:701[A]:HOH:O	2.01	0.77
1:A:122:SER:OG	8:A:702:HOH:O	2.05	0.74
7:A:618:SO4:O1	8:A:703:HOH:O	2.07	0.70
6:A:615[B]:NAG:O3	6:A:615[B]:NAG:O7	2.15	0.64
6:A:615[B]:NAG:O3	6:A:615[B]:NAG:C7	2.54	0.56
1:A:560:ASP:O	1:A:563:MET:HG3	2.08	0.54
3:A:601:FAD:O4	5:A:614[B]:GLC:O6	2.24	0.54
1:A:98:GLY:HA3	5:A:614[B]:GLC:H62	1.93	0.50
1:A:495[B]:PHE:CD1	1:A:500:ASN:HB2	2.47	0.49
1:A:97:ASN:HB2	3:A:601:FAD:C5X	2.43	0.49
1:A:551:TYR:O	1:A:552:ASP:HB2	2.13	0.48
1:A:334[B]:ILE:HG22	1:A:478:LEU:CD1	2.44	0.48
1:A:378:ALA:O	1:A:382:THR:HG23	2.13	0.48
1:A:334[B]:ILE:HG22	1:A:478:LEU:HD12	1.94	0.47
1:A:495[A]:PHE:CD1	1:A:500:ASN:HB2	2.49	0.47
1:A:25:GLY:HA3	3:A:601:FAD:O5B	2.14	0.47
1:A:323:GLY:O	1:A:439:ASN:HA	2.15	0.47
1:A:430:TRP:CH2	5:A:614[B]:GLC:H1	2.50	0.46

*Continued on next page...*

Continued from previous page...

Atom-1	Atom-2	Interatomic distance (Å)	Clash overlap (Å)
1:A:308:LEU:HB3	1:A:313[B]:ILE:HG23	1.97	0.46
1:A:270[B]:ASP:C	1:A:270[B]:ASP:OD1	2.54	0.45
1:A:99:ALA:O	1:A:211:LEU:HA	2.17	0.45
1:A:26:LEU:C	1:A:26:LEU:HD23	2.38	0.45
1:A:508:ALA:HA	1:A:511[B]:LYS:HE3	1.98	0.45
1:A:548:LEU:O	1:A:557:ARG:HA	2.16	0.45
1:A:293:THR:N	1:A:294:PRO:HD2	2.33	0.44
1:A:320[B]:LYS:HD3	1:A:389:LEU:HD12	2.00	0.44
1:A:277[B]:LYS:HD2	1:A:279[B]:PHE:CZ	2.53	0.43
1:A:179:MET:HB2	1:A:180:PRO:HD3	2.00	0.43
1:A:416:PHE:CE1	5:A:614[B]:GLC:H4	2.54	0.43
1:A:148:ARG:NH1	8:A:708:HOH:O	2.39	0.43
1:A:172[B]:GLU:OE1	1:A:346:HIS:HD2	2.02	0.42
1:A:418[B]:ASP:OD2	1:A:421[B]:PHE:HB3	2.19	0.42
7:A:619:SO4:O3	8:A:704:HOH:O	2.20	0.42
1:A:499:PRO:HD2	1:A:509:ASP:OD2	2.19	0.42
1:A:146[A]:GLN:HE21	1:A:146[A]:GLN:HB2	1.70	0.41
1:A:445:ASN:OD1	1:A:445:ASN:N	2.48	0.41
1:A:355:PRO:HD2	1:A:413:VAL:O	2.21	0.41
1:A:538[B]:ARG:NH1	8:A:725:HOH:O	2.54	0.41
1:A:472[B]:ARG:NH1	1:A:505:GLY:O	2.47	0.40

There are no symmetry-related clashes.

## 5.3 Torsion angles [i](#)

### 5.3.1 Protein backbone [i](#)

In the following table, the Percentiles column shows the percent Ramachandran outliers of the chain as a percentile score with respect to all X-ray entries followed by that with respect to entries of similar resolution.

The Analysed column shows the number of residues for which the backbone conformation was analysed, and the total number of residues.

Mol	Chain	Analysed	Favoured	Allowed	Outliers	Percentiles
1	A	671/591 (114%)	650 (97%)	21 (3%)	0	<b>100</b> <b>100</b>

There are no Ramachandran outliers to report.

### 5.3.2 Protein sidechains [i](#)

In the following table, the Percentiles column shows the percent sidechain outliers of the chain as a percentile score with respect to all X-ray entries followed by that with respect to entries of similar resolution.

The Analysed column shows the number of residues for which the sidechain conformation was analysed, and the total number of residues.

Mol	Chain	Analysed	Rotameric	Outliers	Percentiles
1	A	543/465 (117%)	526 (97%)	17 (3%)	40 14

All (17) residues with a non-rotameric sidechain are listed below:

Mol	Chain	Res	Type
1	A	11	VAL
1	A	12	VAL
1	A	77[A]	GLU
1	A	77[B]	GLU
1	A	146[A]	GLN
1	A	146[B]	GLN
1	A	198	LEU
1	A	259[A]	LEU
1	A	259[B]	LEU
1	A	394[A]	LEU
1	A	394[B]	LEU
1	A	464	LEU
1	A	472[A]	ARG
1	A	472[B]	ARG
1	A	496[A]	LYS
1	A	496[B]	LYS
1	A	525	SER

Sometimes sidechains can be flipped to improve hydrogen bonding and reduce clashes. All (1) such sidechains are listed below:

Mol	Chain	Res	Type
1	A	346	HIS

### 5.3.3 RNA [i](#)

There are no RNA molecules in this entry.

## 5.4 Non-standard residues in protein, DNA, RNA chains [i](#)

There are no non-standard protein/DNA/RNA residues in this entry.

## 5.5 Carbohydrates [i](#)

4 monosaccharides are modelled in this entry.

In the following table, the Counts columns list the number of bonds (or angles) for which Mogul statistics could be retrieved, the number of bonds (or angles) that are observed in the model and the number of bonds (or angles) that are defined in the Chemical Component Dictionary. The Link column lists molecule types, if any, to which the group is linked. The Z score for a bond length (or angle) is the number of standard deviations the observed value is removed from the expected value. A bond length (or angle) with  $|Z| > 2$  is considered an outlier worth inspection. RMSZ is the root-mean-square of all Z scores of the bond lengths (or angles).

Mol	Type	Chain	Res	Link	Bond lengths			Bond angles		
					Counts	RMSZ	# Z  > 2	Counts	RMSZ	# Z  > 2
2	NAG	B	1	1,2	14,14,15	0.77	0	17,19,21	1.27	1 (5%)
2	NAG	B	2	2	14,14,15	1.01	1 (7%)	17,19,21	1.49	4 (23%)
2	NAG	C	1	1,2	14,14,15	0.72	0	17,19,21	1.70	3 (17%)
2	NAG	C	2	2	14,14,15	0.59	0	17,19,21	1.34	1 (5%)

In the following table, the Chirals column lists the number of chiral outliers, the number of chiral centers analysed, the number of these observed in the model and the number defined in the Chemical Component Dictionary. Similar counts are reported in the Torsion and Rings columns. '-' means no outliers of that kind were identified.

Mol	Type	Chain	Res	Link	Chirals	Torsions	Rings
2	NAG	B	1	1,2	-	0/6/23/26	0/1/1/1
2	NAG	B	2	2	-	1/6/23/26	0/1/1/1
2	NAG	C	1	1,2	-	0/6/23/26	0/1/1/1
2	NAG	C	2	2	-	0/6/23/26	0/1/1/1

All (1) bond length outliers are listed below:

Mol	Chain	Res	Type	Atoms	Z	Observed(Å)	Ideal(Å)
2	B	2	NAG	C1-C2	2.38	1.55	1.52

All (9) bond angle outliers are listed below:

Mol	Chain	Res	Type	Atoms	Z	Observed(°)	Ideal(°)
2	C	1	NAG	O5-C5-C6	3.81	113.18	107.20

*Continued on next page...*

*Continued from previous page...*

Mol	Chain	Res	Type	Atoms	Z	Observed(°)	Ideal(°)
2	C	2	NAG	O3-C3-C2	-3.65	101.91	109.47
2	C	1	NAG	O5-C1-C2	-2.82	106.83	111.29
2	B	2	NAG	C3-C4-C5	-2.72	105.39	110.24
2	B	2	NAG	O3-C3-C4	-2.64	104.26	110.35
2	B	2	NAG	C1-C2-N2	-2.59	106.06	110.49
2	C	1	NAG	O3-C3-C4	-2.41	104.77	110.35
2	B	1	NAG	C6-C5-C4	-2.08	108.14	113.00
2	B	2	NAG	O4-C4-C5	2.02	114.32	109.30

There are no chirality outliers.

All (1) torsion outliers are listed below:

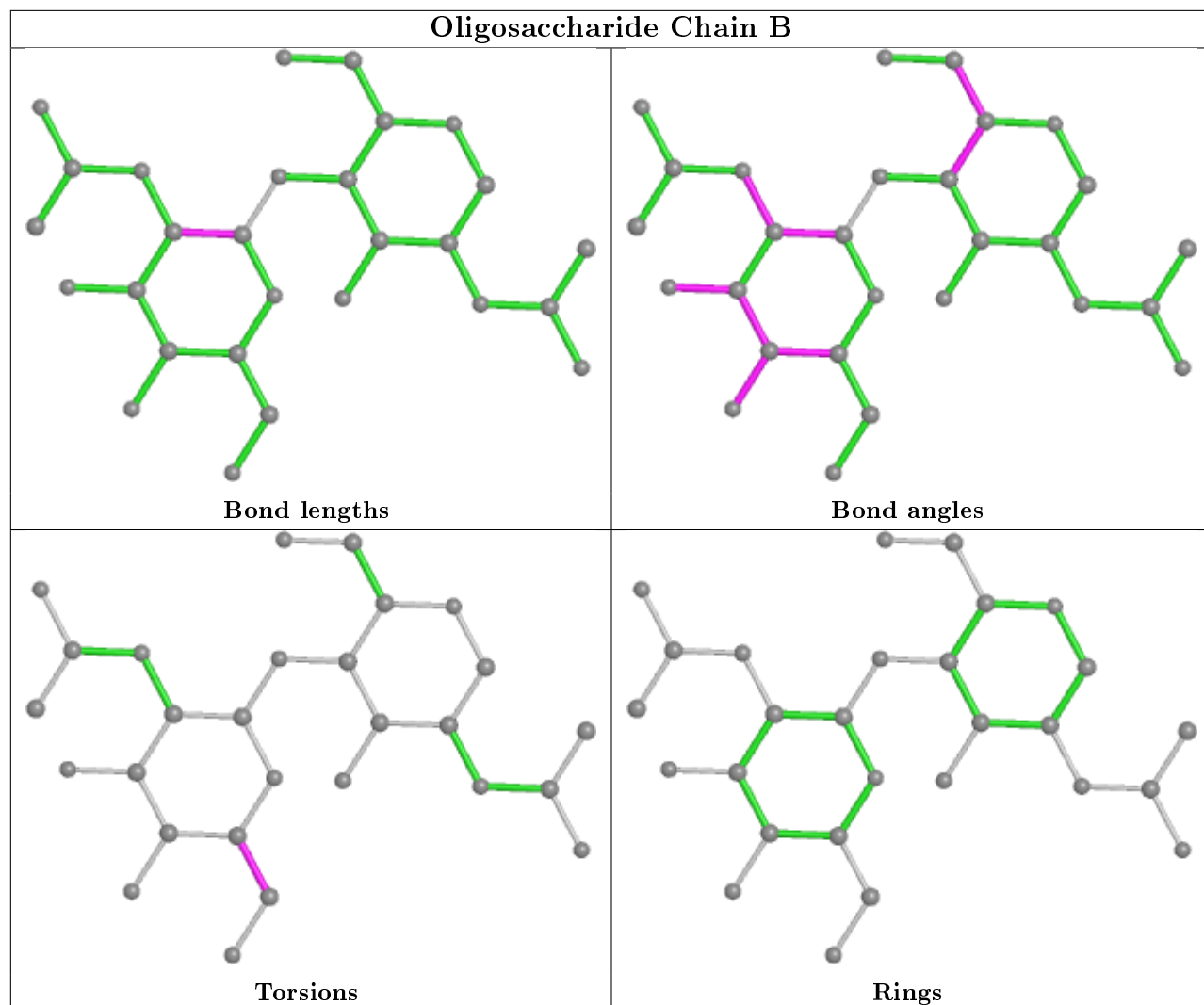
Mol	Chain	Res	Type	Atoms
2	B	2	NAG	O5-C5-C6-O6

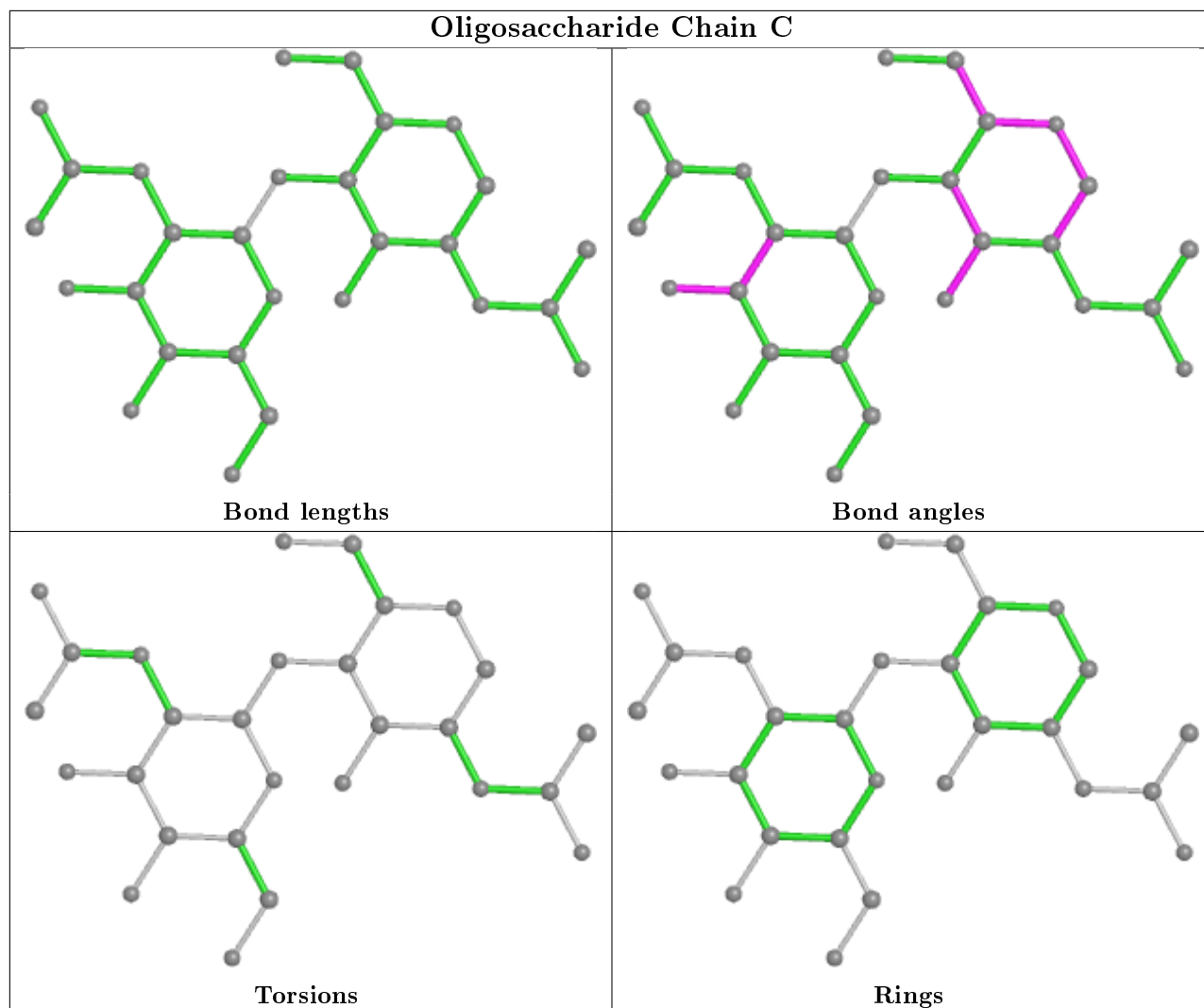
There are no ring outliers.

No monomer is involved in short contacts.

The following is a two-dimensional graphical depiction of Mogul quality analysis of bond lengths, bond angles, torsion angles, and ring geometry for oligosaccharide.







## 5.6 Ligand geometry [i](#)

16 ligands are modelled in this entry.

In the following table, the Counts columns list the number of bonds (or angles) for which Mogul statistics could be retrieved, the number of bonds (or angles) that are observed in the model and the number of bonds (or angles) that are defined in the Chemical Component Dictionary. The Link column lists molecule types, if any, to which the group is linked. The Z score for a bond length (or angle) is the number of standard deviations the observed value is removed from the expected value. A bond length (or angle) with  $|Z| > 2$  is considered an outlier worth inspection. RMSZ is the root-mean-square of all Z scores of the bond lengths (or angles).

Mol	Type	Chain	Res	Link	Bond lengths			Bond angles		
					Counts	RMSZ	# Z  > 2	Counts	RMSZ	# Z  > 2
4	BGC	A	602	-	12,12,12	0.67	0	17,17,17	1.14	3 (17%)
3	FAD	A	601	-	51,58,58	2.78	6 (11%)	60,89,89	2.49	8 (13%)
4	BGC	A	613	-	12,12,12	0.85	0	17,17,17	0.91	1 (5%)

Mol	Type	Chain	Res	Link	Bond lengths			Bond angles		
					Counts	RMSZ	# Z  > 2	Counts	RMSZ	# Z  > 2
4	BGC	A	612	-	12,12,12	1.02	1 (8%)	17,17,17	1.77	4 (23%)
4	BGC	A	610	-	12,12,12	1.00	0	17,17,17	1.32	2 (11%)
5	GLC	A	614[B]	-	12,12,12	0.74	0	17,17,17	1.66	6 (35%)
4	BGC	A	605	-	12,12,12	0.75	0	17,17,17	1.56	2 (11%)
4	BGC	A	609[A]	-	12,12,12	0.65	0	17,17,17	1.55	5 (29%)
4	BGC	A	611	-	12,12,12	1.03	0	17,17,17	1.96	6 (35%)
7	SO4	A	616	-	4,4,4	0.36	0	6,6,6	0.05	0
4	BGC	A	608	-	12,12,12	0.91	0	17,17,17	1.39	1 (5%)
7	SO4	A	618	-	4,4,4	0.38	0	6,6,6	0.09	0
7	SO4	A	619	-	4,4,4	0.38	0	6,6,6	0.06	0
7	SO4	A	617	-	4,4,4	0.37	0	6,6,6	0.08	0
6	NAG	A	615[B]	1	14,14,15	0.60	0	17,19,21	2.52	9 (52%)
6	NAG	A	615[A]	1	14,14,15	0.30	0	17,19,21	0.61	0

In the following table, the Chirals column lists the number of chiral outliers, the number of chiral centers analysed, the number of these observed in the model and the number defined in the Chemical Component Dictionary. Similar counts are reported in the Torsion and Rings columns. '-' means no outliers of that kind were identified.

Mol	Type	Chain	Res	Link	Chirals	Torsions	Rings
4	BGC	A	602	-	-	0/2/22/22	0/1/1/1
3	FAD	A	601	-	-	3/30/50/50	0/6/6/6
4	BGC	A	613	-	-	0/2/22/22	0/1/1/1
4	BGC	A	612	-	-	1/2/22/22	0/1/1/1
4	BGC	A	610	-	-	1/2/22/22	0/1/1/1
5	GLC	A	614[B]	-	-	0/2/22/22	0/1/1/1
4	BGC	A	605	-	-	0/2/22/22	0/1/1/1
4	BGC	A	609[A]	-	-	2/2/22/22	0/1/1/1
4	BGC	A	611	-	-	0/2/22/22	0/1/1/1
4	BGC	A	608	-	-	0/2/22/22	0/1/1/1
6	NAG	A	615[B]	1	-	1/6/23/26	0/1/1/1
6	NAG	A	615[A]	1	-	5/6/23/26	0/1/1/1

All (7) bond length outliers are listed below:

Mol	Chain	Res	Type	Atoms	Z	Observed(Å)	Ideal(Å)
3	A	601	FAD	C4X-C10	14.56	1.53	1.38
3	A	601	FAD	C4X-N5	9.36	1.46	1.33
3	A	601	FAD	C4-N3	5.48	1.42	1.33
3	A	601	FAD	C5X-N5	4.61	1.43	1.35

*Continued on next page...*

*Continued from previous page...*

Mol	Chain	Res	Type	Atoms	Z	Observed(Å)	Ideal(Å)
3	A	601	FAD	C9A-N10	3.39	1.43	1.38
4	A	612	BGC	O3-C3	2.80	1.49	1.43
3	A	601	FAD	C10-N1	-2.41	1.30	1.33

All (47) bond angle outliers are listed below:

Mol	Chain	Res	Type	Atoms	Z	Observed(°)	Ideal(°)
3	A	601	FAD	C4-N3-C2	11.80	125.11	115.14
3	A	601	FAD	C4-C4X-C10	-11.15	112.57	119.95
3	A	601	FAD	C4X-C4-N3	-6.23	114.91	123.43
6	A	615[B]	NAG	C2-N2-C7	-4.76	116.12	122.90
6	A	615[B]	NAG	C1-C2-N2	4.55	118.26	110.49
4	A	605	BGC	O6-C6-C5	-4.49	95.90	111.29
4	A	608	BGC	O6-C6-C5	-4.26	96.67	111.29
4	A	611	BGC	O4-C4-C3	-4.06	100.96	110.35
3	A	601	FAD	C10-C4X-N5	-3.74	118.67	121.26
4	A	611	BGC	C3-C4-C5	3.63	116.71	110.24
4	A	612	BGC	O3-C3-C2	3.46	118.35	110.35
4	A	611	BGC	O2-C2-C3	-3.44	102.40	110.35
4	A	610	BGC	O1-C1-C2	3.33	118.41	109.03
4	A	612	BGC	C3-C4-C5	3.32	116.17	110.24
6	A	615[B]	NAG	C3-C4-C5	-3.32	104.31	110.24
3	A	601	FAD	C4X-N5-C5X	3.32	120.09	116.77
5	A	614[B]	GLC	C1-C2-C3	3.25	117.05	110.31
6	A	615[B]	NAG	O3-C3-C2	-3.18	102.88	109.47
4	A	612	BGC	O4-C4-C3	-3.09	103.20	110.35
4	A	609[A]	BGC	C1-O5-C5	-3.03	107.94	113.66
6	A	615[B]	NAG	O7-C7-N2	-2.95	116.52	121.95
3	A	601	FAD	C4X-C10-N10	-2.85	117.37	120.30
5	A	614[B]	GLC	O5-C1-C2	2.82	115.31	110.28
4	A	612	BGC	C1-O5-C5	-2.77	108.44	113.66
6	A	615[B]	NAG	O5-C5-C4	-2.68	104.32	110.83
6	A	615[B]	NAG	O5-C5-C6	2.66	111.37	107.20
3	A	601	FAD	C5X-C9A-N10	2.65	119.64	117.72
5	A	614[B]	GLC	C3-C4-C5	-2.57	105.65	110.24
4	A	611	BGC	O5-C1-C2	2.56	114.86	110.28
4	A	613	BGC	O3-C3-C2	-2.49	104.59	110.35
4	A	609[A]	BGC	O6-C6-C5	-2.42	103.00	111.29
4	A	611	BGC	O3-C3-C4	2.36	115.81	110.35
4	A	602	BGC	C3-C4-C5	2.35	114.43	110.24
4	A	609[A]	BGC	O4-C4-C3	2.32	115.71	110.35
6	A	615[B]	NAG	O7-C7-C8	2.31	126.35	122.06

*Continued on next page...*

Continued from previous page...

Mol	Chain	Res	Type	Atoms	Z	Observed(°)	Ideal(°)
6	A	615[B]	NAG	O5-C1-C2	-2.29	107.67	111.29
3	A	601	FAD	O2P-P-O1P	2.28	123.49	112.24
5	A	614[B]	GLC	C6-C5-C4	-2.24	107.75	113.00
4	A	609[A]	BGC	C3-C4-C5	-2.24	106.25	110.24
4	A	609[A]	BGC	O5-C5-C6	2.23	111.98	106.44
4	A	610	BGC	C6-C5-C4	2.13	118.00	113.00
4	A	602	BGC	O1-C1-O5	-2.13	103.98	110.38
4	A	602	BGC	C6-C5-C4	-2.12	108.04	113.00
5	A	614[B]	GLC	O5-C5-C4	2.09	113.50	109.69
4	A	605	BGC	O2-C2-C1	2.08	114.00	109.16
4	A	611	BGC	O2-C2-C1	2.05	113.91	109.16
5	A	614[B]	GLC	O2-C2-C3	-2.03	105.65	110.35

There are no chirality outliers.

All (13) torsion outliers are listed below:

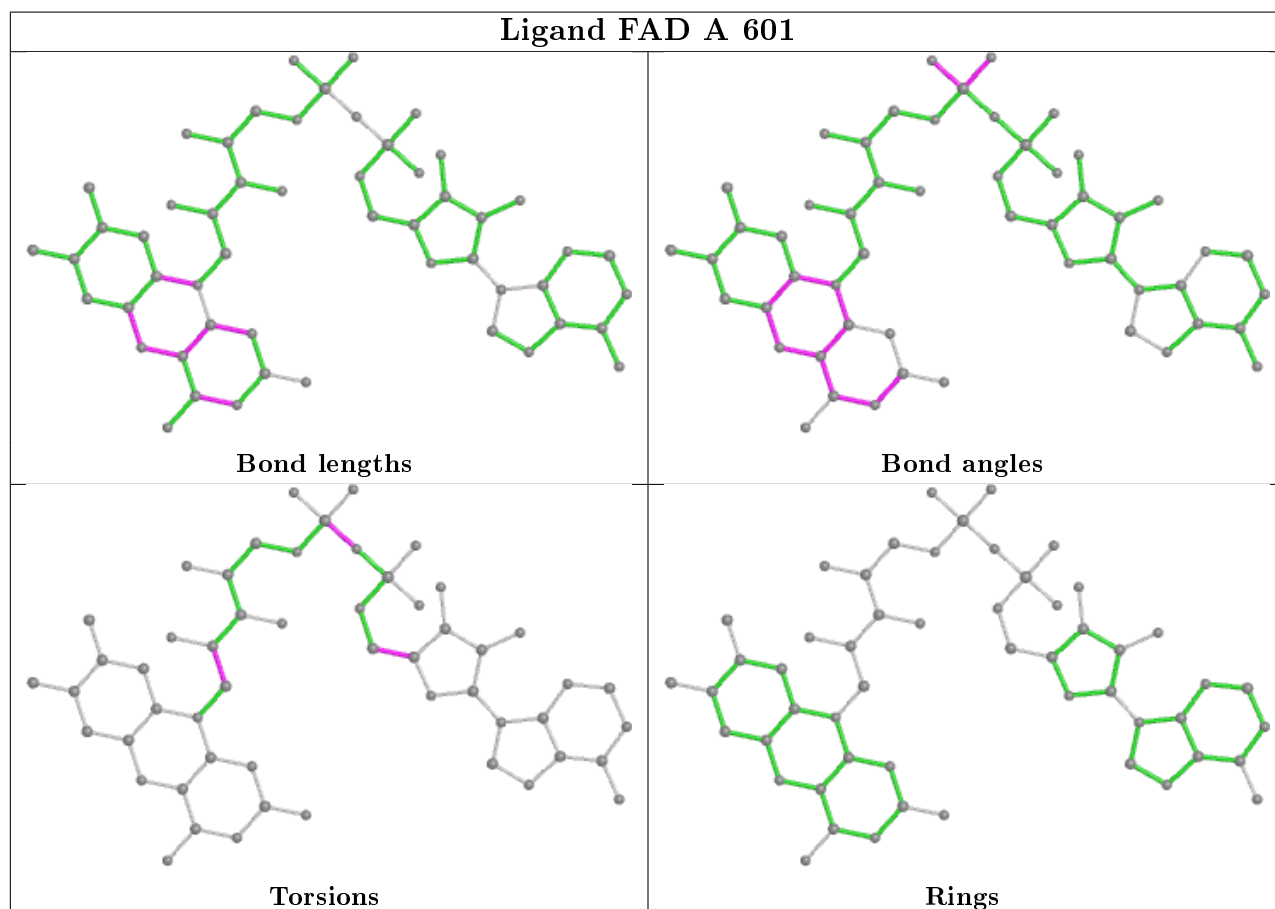
Mol	Chain	Res	Type	Atoms
3	A	601	FAD	N10-C1'-C2'-O2'
6	A	615[A]	NAG	C3-C2-N2-C7
6	A	615[A]	NAG	C8-C7-N2-C2
6	A	615[A]	NAG	O7-C7-N2-C2
4	A	609[A]	BGC	O5-C5-C6-O6
6	A	615[A]	NAG	C4-C5-C6-O6
4	A	610	BGC	O5-C5-C6-O6
4	A	609[A]	BGC	C4-C5-C6-O6
6	A	615[A]	NAG	O5-C5-C6-O6
4	A	612	BGC	C4-C5-C6-O6
3	A	601	FAD	PA-O3P-P-O5'
3	A	601	FAD	O4B-C4B-C5B-O5B
6	A	615[B]	NAG	C3-C2-N2-C7

There are no ring outliers.

6 monomers are involved in 11 short contacts:

Mol	Chain	Res	Type	Clashes	Symm-Clashes
3	A	601	FAD	3	0
5	A	614[B]	GLC	4	0
4	A	609[A]	BGC	1	0
7	A	618	SO4	1	0
7	A	619	SO4	1	0
6	A	615[B]	NAG	2	0

The following is a two-dimensional graphical depiction of Mogul quality analysis of bond lengths, bond angles, torsion angles, and ring geometry for all instances of the Ligand of Interest. In addition, ligands with molecular weight > 250 and outliers as shown on the validation Tables will also be included. For torsion angles, if less than 5% of the Mogul distribution of torsion angles is within 10 degrees of the torsion angle in question, then that torsion angle is considered an outlier. Any bond that is central to one or more torsion angles identified as an outlier by Mogul will be highlighted in the graph. For rings, the root-mean-square deviation (RMSD) between the ring in question and similar rings identified by Mogul is calculated over all ring torsion angles. If the average RMSD is greater than 60 degrees and the minimal RMSD between the ring in question and any Mogul-identified rings is also greater than 60 degrees, then that ring is considered an outlier. The outliers are highlighted in purple. The color gray indicates Mogul did not find sufficient equivalents in the CSD to analyse the geometry.



## 5.7 Other polymers [i](#)

There are no such residues in this entry.

## 5.8 Polymer linkage issues [i](#)

There are no chain breaks in this entry.

## 6 Fit of model and data

### 6.1 Protein, DNA and RNA chains

In the following table, the column labelled ‘#RSRZ> 2’ contains the number (and percentage) of RSRZ outliers, followed by percent RSRZ outliers for the chain as percentile scores relative to all X-ray entries and entries of similar resolution. The OWAB column contains the minimum, median, 95<sup>th</sup> percentile and maximum values of the occupancy-weighted average B-factor per residue. The column labelled ‘Q< 0.9’ lists the number of (and percentage) of residues with an average occupancy less than 0.9.

Mol	Chain	Analysed	<RSRZ>	#RSRZ>2	OWAB(Å <sup>2</sup> )	Q<0.9
1	A	589/591 (99%)	0.23	41 (6%) <b>16</b> <b>16</b>	15, 33, 63, 80	0

All (41) RSRZ outliers are listed below:

Mol	Chain	Res	Type	RSRZ
1	A	3	SER	7.3
1	A	237[A]	GLN	6.3
1	A	229[A]	TYR	5.0
1	A	512[A]	LYS	4.3
1	A	276[A]	TYR	4.3
1	A	262[A]	VAL	4.1
1	A	279[A]	PHE	4.0
1	A	381[A]	LYS	4.0
1	A	274[A]	ASN	3.8
1	A	256[A]	ASN	3.7
1	A	235[A]	ASN	3.6
1	A	272[A]	THR	3.6
1	A	382	THR	3.4
1	A	252[A]	PHE	3.4
1	A	234	ASN	3.2
1	A	12	VAL	3.2
1	A	314[A]	SER	3.1
1	A	255[A]	THR	3.1
1	A	215	TRP	3.0
1	A	591	GLN	3.0
1	A	42[A]	GLN	2.9
1	A	267[A]	GLY	2.9
1	A	461[A]	ASP	2.9
1	A	39	SER	2.8
1	A	242[A]	LEU	2.7
1	A	271[A]	ALA	2.7
1	A	268[A]	ALA	2.6

*Continued on next page...*

*Continued from previous page...*

Mol	Chain	Res	Type	RSRZ
1	A	309	GLY	2.6
1	A	306[A]	ASP	2.6
1	A	238	GLY	2.6
1	A	269[A]	SER	2.5
1	A	239	TRP	2.4
1	A	496[A]	LYS	2.4
1	A	36	ALA	2.4
1	A	257[A]	ALA	2.3
1	A	232	VAL	2.3
1	A	265[A]	GLU	2.3
1	A	13	ASN	2.1
1	A	378	ALA	2.1
1	A	515	LEU	2.1
1	A	264[A]	ILE	2.0

## 6.2 Non-standard residues in protein, DNA, RNA chains [i](#)

There are no non-standard protein/DNA/RNA residues in this entry.

## 6.3 Carbohydrates [i](#)

In the following table, the Atoms column lists the number of modelled atoms in the group and the number defined in the chemical component dictionary. The B-factors column lists the minimum, median, 95<sup>th</sup> percentile and maximum values of B factors of atoms in the group. The column labelled 'Q< 0.9' lists the number of atoms with occupancy less than 0.9.

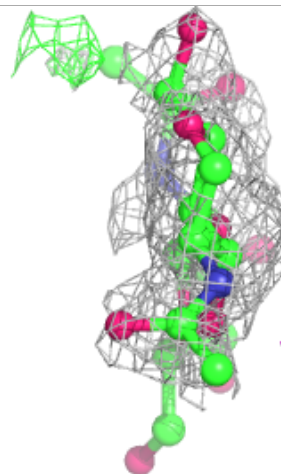
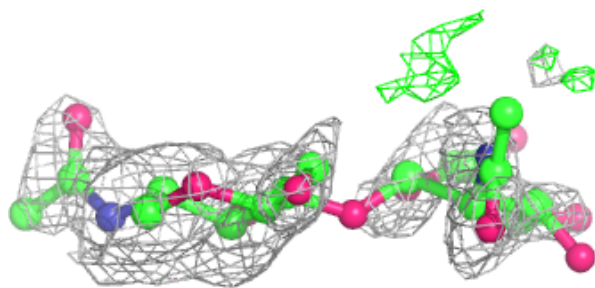
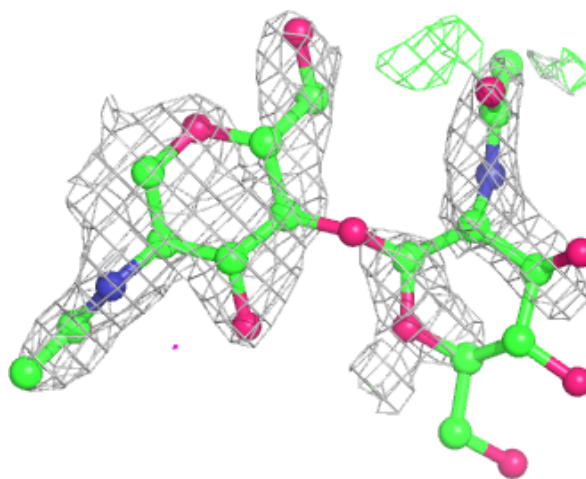
Mol	Type	Chain	Res	Atoms	RSCC	RSR	B-factors(Å <sup>2</sup> )	Q<0.9
2	NAG	B	2	14/15	0.62	0.50	90,96,99,103	0
2	NAG	B	1	14/15	0.84	0.34	63,69,72,77	0
2	NAG	C	2	14/15	0.85	0.28	68,74,82,86	0
2	NAG	C	1	14/15	0.96	0.11	48,52,57,60	0

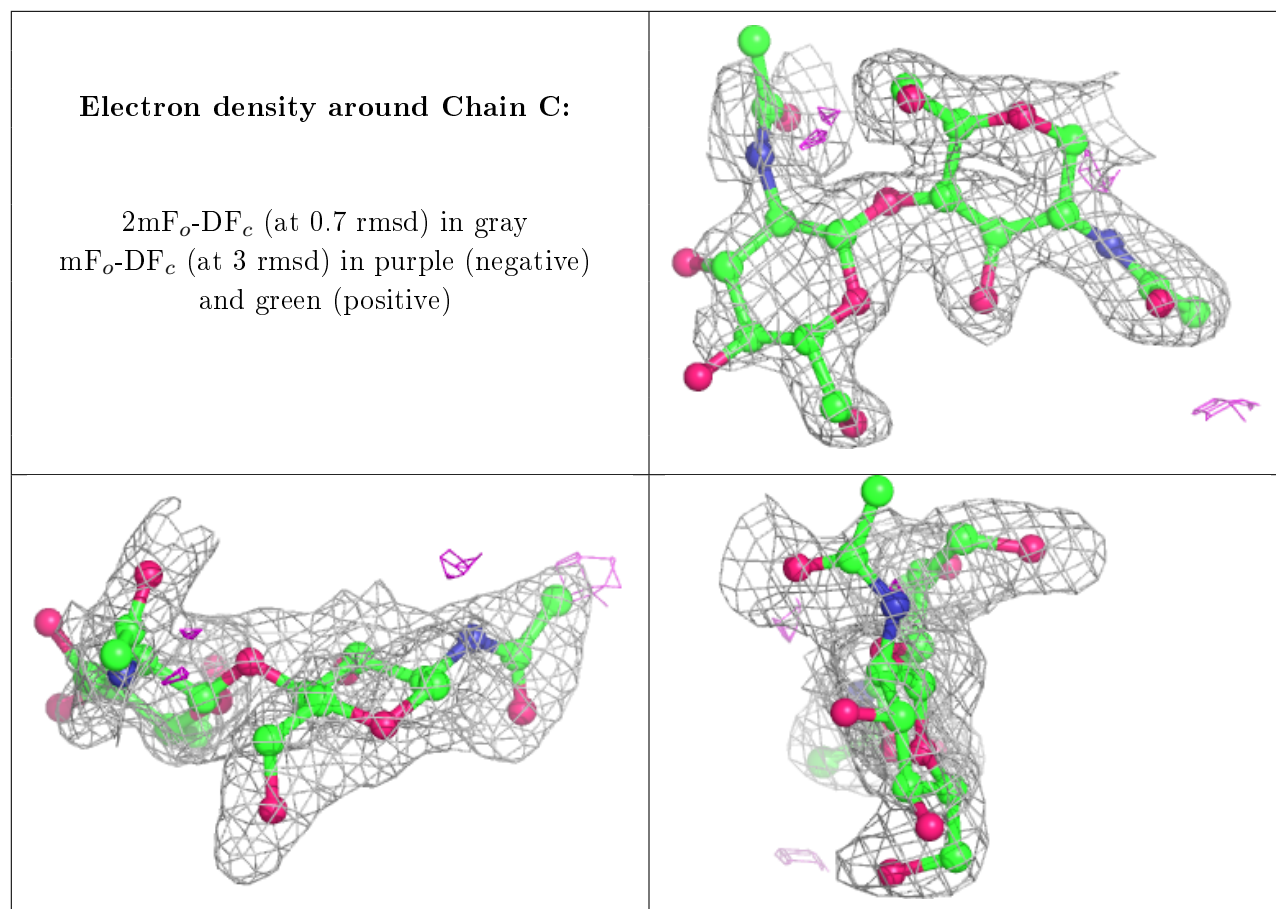
The following is a graphical depiction of the model fit to experimental electron density for oligosaccharide. Each fit is shown from different orientation to approximate a three-dimensional view.



**Electron density around Chain B:**

$2mF_o-DF_c$  (at 0.7 rmsd) in gray  
 $mF_o-DF_c$  (at 3 rmsd) in purple (negative)  
and green (positive)





## 6.4 Ligands [i](#)

In the following table, the Atoms column lists the number of modelled atoms in the group and the number defined in the chemical component dictionary. The B-factors column lists the minimum, median, 95<sup>th</sup> percentile and maximum values of B factors of atoms in the group. The column labelled 'Q< 0.9' lists the number of atoms with occupancy less than 0.9.

Mol	Type	Chain	Res	Atoms	RSCC	RSR	B-factors(Å <sup>2</sup> )	Q<0.9
6	NAG	A	615[A]	14/15	0.18	0.56	46,50,54,57	14
6	NAG	A	615[B]	14/15	0.18	0.56	50,56,57,59	14
4	BGC	A	610	12/12	0.58	0.19	63,70,73,75	0
4	BGC	A	613	12/12	0.79	0.16	55,58,61,62	0
7	SO4	A	618	5/5	0.81	0.17	64,64,71,71	5
7	SO4	A	619	5/5	0.82	0.21	65,96,100,103	0
7	SO4	A	617	5/5	0.85	0.12	80,83,87,88	0
4	BGC	A	612	12/12	0.86	0.12	48,54,59,59	0
4	BGC	A	611	12/12	0.87	0.13	42,55,59,60	0
4	BGC	A	609[A]	12/12	0.91	0.15	34,41,43,49	12
5	GLC	A	614[B]	12/12	0.91	0.20	36,39,42,43	12
7	SO4	A	616	5/5	0.91	0.17	93,94,101,102	0

*Continued on next page...*

*Continued from previous page...*

Mol	Type	Chain	Res	Atoms	RSCC	RSR	B-factors(Å <sup>2</sup> )	Q<0.9
4	BGC	A	605	12/12	0.94	0.07	23,29,32,38	0
4	BGC	A	608	12/12	0.95	0.07	33,40,45,52	0
3	FAD	A	601	53/53	0.97	0.07	22,27,37,38	0
4	BGC	A	602	12/12	0.97	0.13	35,38,40,43	0

## 6.5 Other polymers [i](#)

There are no such residues in this entry.