



wwPDB EM Validation Summary Report ⓘ

Sep 3, 2024 – 08:19 PM JST

PDB ID : 8XUS
EMDB ID : EMD-38682
Title : JN.1 Spike Trimer in complex with heparan sulfate
Authors : Yue, C.; Liu, P.
Deposited on : 2024-01-14
Resolution : 3.18 Å (reported)

This is a wwPDB EM Validation Summary Report for a publicly released PDB entry.

We welcome your comments at validation@mail.wwpdb.org

A user guide is available at

<https://www.wwpdb.org/validation/2017/EMValidationReportHelp>

with specific help available everywhere you see the ⓘ symbol.

The types of validation reports are described at

<http://www.wwpdb.org/validation/2017/FAQs#types>.

The following versions of software and data (see [references ⓘ](#)) were used in the production of this report:

EMDB validation analysis : **FAILED**
Mogul : 1.8.5 (274361), CSD as541be (2020)
MolProbity : 4.02b-467
buster-report : 1.1.7 (2018)
Percentile statistics : 20231227.v01 (using entries in the PDB archive December 27th 2023)
MapQ : **FAILED**
Ideal geometry (proteins) : Engh & Huber (2001)
Ideal geometry (DNA, RNA) : Parkinson et al. (1996)
Validation Pipeline (wwPDB-VP) : 2.38.2

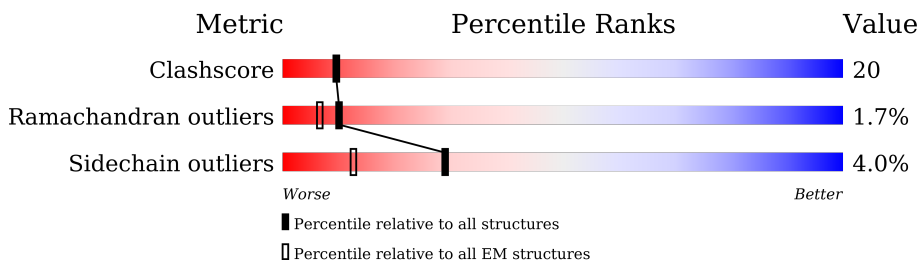
1 Overall quality at a glance i

The following experimental techniques were used to determine the structure:

ELECTRON MICROSCOPY

The reported resolution of this entry is 3.18 Å.

Percentile scores (ranging between 0-100) for global validation metrics of the entry are shown in the following graphic. The table shows the number of entries on which the scores are based.



Metric	Whole archive (#Entries)	EM structures (#Entries)
Clashscore	210492	15764
Ramachandran outliers	207382	16835
Sidechain outliers	206894	16415

The table below summarises the geometric issues observed across the polymeric chains and their fit to the map. The red, orange, yellow and green segments of the bar indicate the fraction of residues that contain outliers for ≥ 3 , 2, 1 and 0 types of geometric quality criteria respectively. A grey segment represents the fraction of residues that are not modelled. The numeric value for each fraction is indicated below the corresponding segment, with a dot representing fractions $\leq 5\%$.

Mol	Chain	Length	Quality of chain
1	A	1206	56% 29% • 12%
1	B	1206	57% 29% • 12%
1	C	1206	55% 30% • 12%

2 Entry composition [i](#)

There are 3 unique types of molecules in this entry. The entry contains 25713 atoms, of which 0 are hydrogens and 0 are deuteriums.

In the tables below, the AltConf column contains the number of residues with at least one atom in alternate conformation and the Trace column contains the number of residues modelled with at most 2 atoms.

- Molecule 1 is a protein called Spike glycoprotein.

Mol	Chain	Residues	Atoms					AltConf	Trace
			Total	C	N	O	S		
1	C	1063	8314	5319	1383	1574	38	0	0
1	A	1063	8314	5319	1383	1574	38	0	0
1	B	1063	8314	5319	1383	1574	38	0	0

There are 222 discrepancies between the modelled and reference sequences:

Chain	Residue	Modelled	Actual	Comment	Reference
C	-2	ALA	-	expression tag	UNP P0DTC2
C	-1	THR	-	expression tag	UNP P0DTC2
C	16	MET	-	insertion	UNP P0DTC2
C	17	PRO	-	insertion	UNP P0DTC2
C	18	LEU	-	insertion	UNP P0DTC2
C	19	PHE	-	insertion	UNP P0DTC2
C	22	ILE	THR	variant	UNP P0DTC2
C	24	THR	ARG	variant	UNP P0DTC2
C	?	-	LEU	deletion	UNP P0DTC2
C	?	-	PRO	deletion	UNP P0DTC2
C	?	-	PRO	deletion	UNP P0DTC2
C	27	SER	ALA	variant	UNP P0DTC2
C	50	LEU	SER	conflict	UNP P0DTC2
C	?	-	HIS	deletion	UNP P0DTC2
C	?	-	VAL	deletion	UNP P0DTC2
C	127	PHE	VAL	conflict	UNP P0DTC2
C	143	ASP	GLY	variant	UNP P0DTC2
C	?	-	TYR	deletion	UNP P0DTC2
C	157	SER	PHE	conflict	UNP P0DTC2
C	158	GLY	ARG	variant	UNP P0DTC2
C	?	-	ASN	deletion	UNP P0DTC2
C	212	ILE	LEU	variant	UNP P0DTC2
C	213	GLY	VAL	variant	UNP P0DTC2
C	216	PHE	LEU	conflict	UNP P0DTC2

Continued on next page...

Continued from previous page...

Chain	Residue	Modelled	Actual	Comment	Reference
C	245	ASN	HIS	conflict	UNP P0DTC2
C	264	ASP	ALA	conflict	UNP P0DTC2
C	332	VAL	ILE	conflict	UNP P0DTC2
C	339	HIS	GLY	variant	UNP P0DTC2
C	356	THR	LYS	conflict	UNP P0DTC2
C	371	PHE	SER	variant	UNP P0DTC2
C	373	PRO	SER	variant	UNP P0DTC2
C	375	PHE	SER	variant	UNP P0DTC2
C	376	ALA	THR	variant	UNP P0DTC2
C	403	LYS	ARG	conflict	UNP P0DTC2
C	405	ASN	ASP	variant	UNP P0DTC2
C	408	SER	ARG	variant	UNP P0DTC2
C	417	ASN	LYS	variant	UNP P0DTC2
C	440	LYS	ASN	variant	UNP P0DTC2
C	445	HIS	VAL	conflict	UNP P0DTC2
C	446	SER	GLY	variant	UNP P0DTC2
C	450	ASP	ASN	conflict	UNP P0DTC2
C	452	TRP	LEU	conflict	UNP P0DTC2
C	455	SER	LEU	conflict	UNP P0DTC2
C	460	LYS	ASN	variant	UNP P0DTC2
C	477	ASN	SER	variant	UNP P0DTC2
C	478	LYS	THR	variant	UNP P0DTC2
C	481	LYS	ASN	conflict	UNP P0DTC2
C	?	-	VAL	deletion	UNP P0DTC2
C	484	LYS	GLU	variant	UNP P0DTC2
C	486	PRO	PHE	variant	UNP P0DTC2
C	498	ARG	GLN	variant	UNP P0DTC2
C	501	TYR	ASN	variant	UNP P0DTC2
C	505	HIS	TYR	variant	UNP P0DTC2
C	554	LYS	GLU	conflict	UNP P0DTC2
C	570	VAL	ALA	conflict	UNP P0DTC2
C	614	GLY	ASP	variant	UNP P0DTC2
C	621	SER	PRO	conflict	UNP P0DTC2
C	655	TYR	HIS	variant	UNP P0DTC2
C	679	LYS	ASN	variant	UNP P0DTC2
C	681	ARG	PRO	variant	UNP P0DTC2
C	683	ALA	ARG	conflict	UNP P0DTC2
C	685	ALA	ARG	conflict	UNP P0DTC2
C	764	LYS	ASN	variant	UNP P0DTC2
C	796	TYR	ASP	variant	UNP P0DTC2
C	817	PRO	PHE	conflict	UNP P0DTC2
C	892	PRO	ALA	conflict	UNP P0DTC2

Continued on next page...

Continued from previous page...

Chain	Residue	Modelled	Actual	Comment	Reference
C	899	PRO	ALA	conflict	UNP P0DTC2
C	939	PHE	SER	conflict	UNP P0DTC2
C	942	PRO	ALA	conflict	UNP P0DTC2
C	954	HIS	GLN	variant	UNP P0DTC2
C	969	LYS	ASN	variant	UNP P0DTC2
C	986	PRO	LYS	variant	UNP P0DTC2
C	987	PRO	VAL	variant	UNP P0DTC2
C	1143	LEU	PRO	conflict	UNP P0DTC2
A	-2	ALA	-	expression tag	UNP P0DTC2
A	-1	THR	-	expression tag	UNP P0DTC2
A	16	MET	-	insertion	UNP P0DTC2
A	17	PRO	-	insertion	UNP P0DTC2
A	18	LEU	-	insertion	UNP P0DTC2
A	19	PHE	-	insertion	UNP P0DTC2
A	22	ILE	THR	variant	UNP P0DTC2
A	24	THR	ARG	variant	UNP P0DTC2
A	?	-	LEU	deletion	UNP P0DTC2
A	?	-	PRO	deletion	UNP P0DTC2
A	?	-	PRO	deletion	UNP P0DTC2
A	27	SER	ALA	variant	UNP P0DTC2
A	50	LEU	SER	conflict	UNP P0DTC2
A	?	-	HIS	deletion	UNP P0DTC2
A	?	-	VAL	deletion	UNP P0DTC2
A	127	PHE	VAL	conflict	UNP P0DTC2
A	143	ASP	GLY	variant	UNP P0DTC2
A	?	-	TYR	deletion	UNP P0DTC2
A	157	SER	PHE	conflict	UNP P0DTC2
A	158	GLY	ARG	variant	UNP P0DTC2
A	?	-	ASN	deletion	UNP P0DTC2
A	212	ILE	LEU	variant	UNP P0DTC2
A	213	GLY	VAL	variant	UNP P0DTC2
A	216	PHE	LEU	conflict	UNP P0DTC2
A	245	ASN	HIS	conflict	UNP P0DTC2
A	264	ASP	ALA	conflict	UNP P0DTC2
A	332	VAL	ILE	conflict	UNP P0DTC2
A	339	HIS	GLY	variant	UNP P0DTC2
A	356	THR	LYS	conflict	UNP P0DTC2
A	371	PHE	SER	variant	UNP P0DTC2
A	373	PRO	SER	variant	UNP P0DTC2
A	375	PHE	SER	variant	UNP P0DTC2
A	376	ALA	THR	variant	UNP P0DTC2
A	403	LYS	ARG	conflict	UNP P0DTC2

Continued on next page...

Continued from previous page...

Chain	Residue	Modelled	Actual	Comment	Reference
A	405	ASN	ASP	variant	UNP P0DTC2
A	408	SER	ARG	variant	UNP P0DTC2
A	417	ASN	LYS	variant	UNP P0DTC2
A	440	LYS	ASN	variant	UNP P0DTC2
A	445	HIS	VAL	conflict	UNP P0DTC2
A	446	SER	GLY	variant	UNP P0DTC2
A	450	ASP	ASN	conflict	UNP P0DTC2
A	452	TRP	LEU	conflict	UNP P0DTC2
A	455	SER	LEU	conflict	UNP P0DTC2
A	460	LYS	ASN	variant	UNP P0DTC2
A	477	ASN	SER	variant	UNP P0DTC2
A	478	LYS	THR	variant	UNP P0DTC2
A	481	LYS	ASN	conflict	UNP P0DTC2
A	?	-	VAL	deletion	UNP P0DTC2
A	484	LYS	GLU	variant	UNP P0DTC2
A	486	PRO	PHE	variant	UNP P0DTC2
A	498	ARG	GLN	variant	UNP P0DTC2
A	501	TYR	ASN	variant	UNP P0DTC2
A	505	HIS	TYR	variant	UNP P0DTC2
A	554	LYS	GLU	conflict	UNP P0DTC2
A	570	VAL	ALA	conflict	UNP P0DTC2
A	614	GLY	ASP	variant	UNP P0DTC2
A	621	SER	PRO	conflict	UNP P0DTC2
A	655	TYR	HIS	variant	UNP P0DTC2
A	679	LYS	ASN	variant	UNP P0DTC2
A	681	ARG	PRO	variant	UNP P0DTC2
A	683	ALA	ARG	conflict	UNP P0DTC2
A	685	ALA	ARG	conflict	UNP P0DTC2
A	764	LYS	ASN	variant	UNP P0DTC2
A	796	TYR	ASP	variant	UNP P0DTC2
A	817	PRO	PHE	conflict	UNP P0DTC2
A	892	PRO	ALA	conflict	UNP P0DTC2
A	899	PRO	ALA	conflict	UNP P0DTC2
A	939	PHE	SER	conflict	UNP P0DTC2
A	942	PRO	ALA	conflict	UNP P0DTC2
A	954	HIS	GLN	variant	UNP P0DTC2
A	969	LYS	ASN	variant	UNP P0DTC2
A	986	PRO	LYS	variant	UNP P0DTC2
A	987	PRO	VAL	variant	UNP P0DTC2
A	1143	LEU	PRO	conflict	UNP P0DTC2
B	-2	ALA	-	expression tag	UNP P0DTC2
B	-1	THR	-	expression tag	UNP P0DTC2

Continued on next page...

Continued from previous page...

Chain	Residue	Modelled	Actual	Comment	Reference
B	16	MET	-	insertion	UNP P0DTC2
B	17	PRO	-	insertion	UNP P0DTC2
B	18	LEU	-	insertion	UNP P0DTC2
B	19	PHE	-	insertion	UNP P0DTC2
B	22	ILE	THR	variant	UNP P0DTC2
B	24	THR	ARG	variant	UNP P0DTC2
B	?	-	LEU	deletion	UNP P0DTC2
B	?	-	PRO	deletion	UNP P0DTC2
B	?	-	PRO	deletion	UNP P0DTC2
B	27	SER	ALA	variant	UNP P0DTC2
B	50	LEU	SER	conflict	UNP P0DTC2
B	?	-	HIS	deletion	UNP P0DTC2
B	?	-	VAL	deletion	UNP P0DTC2
B	127	PHE	VAL	conflict	UNP P0DTC2
B	143	ASP	GLY	variant	UNP P0DTC2
B	?	-	TYR	deletion	UNP P0DTC2
B	157	SER	PHE	conflict	UNP P0DTC2
B	158	GLY	ARG	variant	UNP P0DTC2
B	?	-	ASN	deletion	UNP P0DTC2
B	212	ILE	LEU	variant	UNP P0DTC2
B	213	GLY	VAL	variant	UNP P0DTC2
B	216	PHE	LEU	conflict	UNP P0DTC2
B	245	ASN	HIS	conflict	UNP P0DTC2
B	264	ASP	ALA	conflict	UNP P0DTC2
B	332	VAL	ILE	conflict	UNP P0DTC2
B	339	HIS	GLY	variant	UNP P0DTC2
B	356	THR	LYS	conflict	UNP P0DTC2
B	371	PHE	SER	variant	UNP P0DTC2
B	373	PRO	SER	variant	UNP P0DTC2
B	375	PHE	SER	variant	UNP P0DTC2
B	376	ALA	THR	variant	UNP P0DTC2
B	403	LYS	ARG	conflict	UNP P0DTC2
B	405	ASN	ASP	variant	UNP P0DTC2
B	408	SER	ARG	variant	UNP P0DTC2
B	417	ASN	LYS	variant	UNP P0DTC2
B	440	LYS	ASN	variant	UNP P0DTC2
B	445	HIS	VAL	conflict	UNP P0DTC2
B	446	SER	GLY	variant	UNP P0DTC2
B	450	ASP	ASN	conflict	UNP P0DTC2
B	452	TRP	LEU	conflict	UNP P0DTC2
B	455	SER	LEU	conflict	UNP P0DTC2
B	460	LYS	ASN	variant	UNP P0DTC2

Continued on next page...

Continued from previous page...

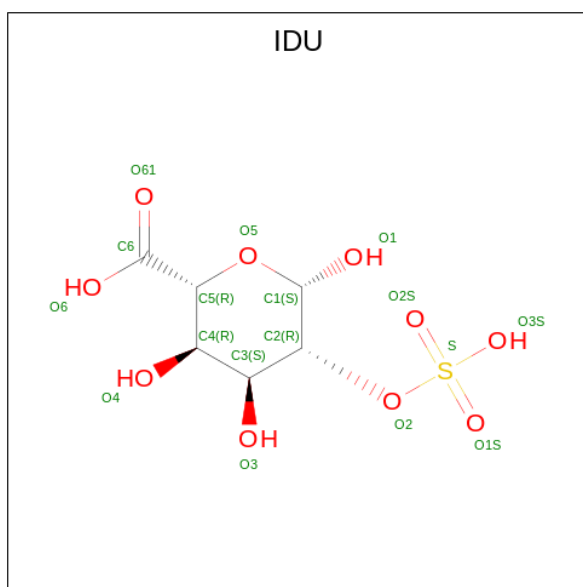
Chain	Residue	Modelled	Actual	Comment	Reference
B	477	ASN	SER	variant	UNP P0DTC2
B	478	LYS	THR	variant	UNP P0DTC2
B	481	LYS	ASN	conflict	UNP P0DTC2
B	?	-	VAL	deletion	UNP P0DTC2
B	484	LYS	GLU	variant	UNP P0DTC2
B	486	PRO	PHE	variant	UNP P0DTC2
B	498	ARG	GLN	variant	UNP P0DTC2
B	501	TYR	ASN	variant	UNP P0DTC2
B	505	HIS	TYR	variant	UNP P0DTC2
B	554	LYS	GLU	conflict	UNP P0DTC2
B	570	VAL	ALA	conflict	UNP P0DTC2
B	614	GLY	ASP	variant	UNP P0DTC2
B	621	SER	PRO	conflict	UNP P0DTC2
B	655	TYR	HIS	variant	UNP P0DTC2
B	679	LYS	ASN	variant	UNP P0DTC2
B	681	ARG	PRO	variant	UNP P0DTC2
B	683	ALA	ARG	conflict	UNP P0DTC2
B	685	ALA	ARG	conflict	UNP P0DTC2
B	764	LYS	ASN	variant	UNP P0DTC2
B	796	TYR	ASP	variant	UNP P0DTC2
B	817	PRO	PHE	conflict	UNP P0DTC2
B	892	PRO	ALA	conflict	UNP P0DTC2
B	899	PRO	ALA	conflict	UNP P0DTC2
B	939	PHE	SER	conflict	UNP P0DTC2
B	942	PRO	ALA	conflict	UNP P0DTC2
B	954	HIS	GLN	variant	UNP P0DTC2
B	969	LYS	ASN	variant	UNP P0DTC2
B	986	PRO	LYS	variant	UNP P0DTC2
B	987	PRO	VAL	variant	UNP P0DTC2
B	1143	LEU	PRO	conflict	UNP P0DTC2

- Molecule 2 is 2-acetamido-2-deoxy-beta-D-glucopyranose (three-letter code: NAG) (formula: C₈H₁₅NO₆).



Mol	Chain	Residues	Atoms				AltConf
			Total	C	N	O	
2	C	1	Total	C	N	O	0
			14	8	1	5	
2	C	1	Total	C	N	O	0
			14	8	1	5	
2	C	1	Total	C	N	O	0
			14	8	1	5	
2	C	1	Total	C	N	O	0
			14	8	1	5	
2	C	1	Total	C	N	O	0
			14	8	1	5	
2	C	1	Total	C	N	O	0
			14	8	1	5	
2	C	1	Total	C	N	O	0
			14	8	1	5	
2	C	1	Total	C	N	O	0
			14	8	1	5	
2	C	1	Total	C	N	O	0
			14	8	1	5	
2	C	1	Total	C	N	O	0
			14	8	1	5	
2	C	1	Total	C	N	O	0
			14	8	1	5	

Continued on next page...

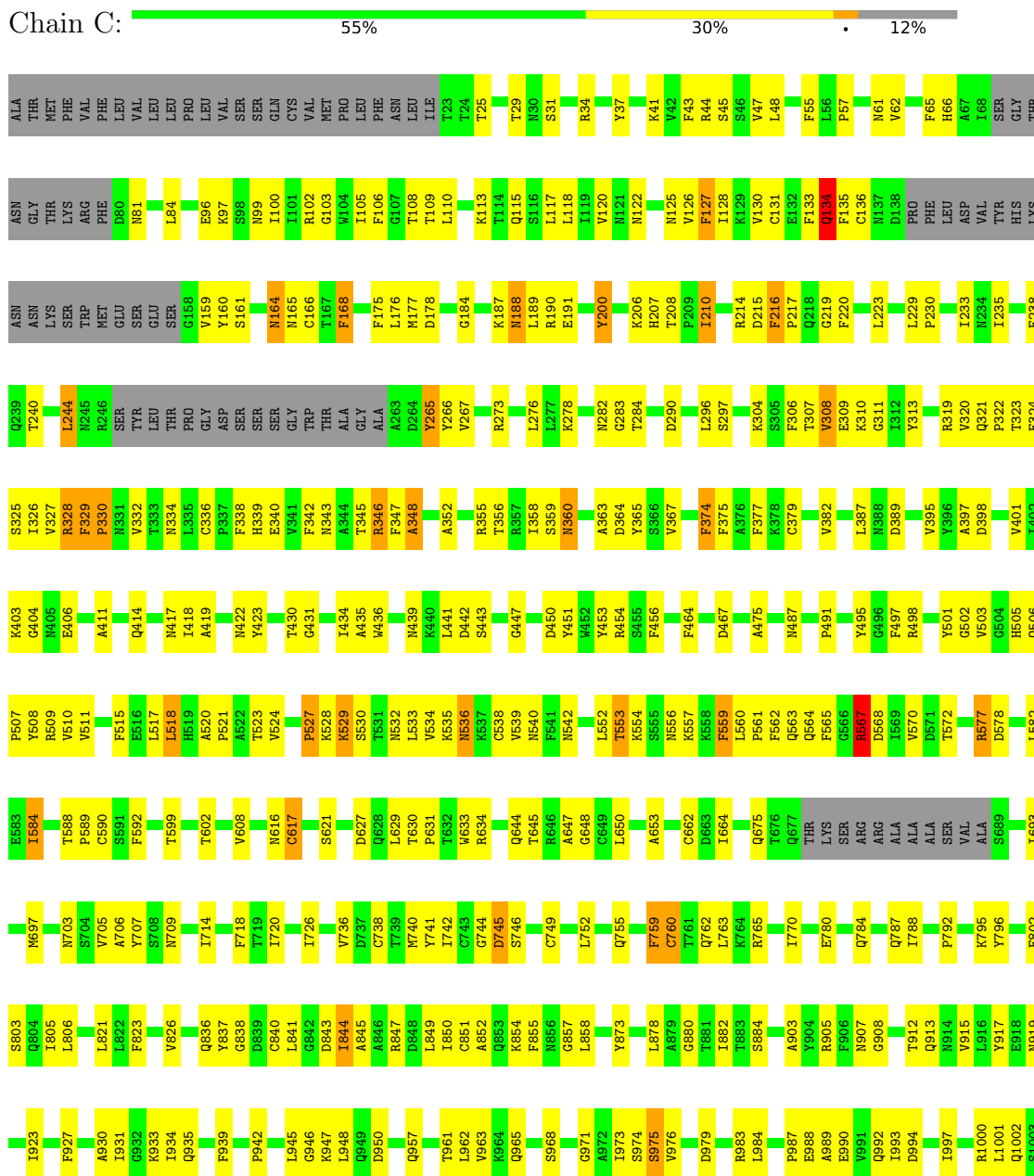


Mol	Chain	Residues	Atoms				AltConf
			Total	C	O	S	
3	B	1	15	6	8	1	0

3 Residue-property plots [i](#)

These plots are drawn for all protein, RNA, DNA and oligosaccharide chains in the entry. The first graphic for a chain summarises the proportions of the various outlier classes displayed in the second graphic. The second graphic shows the sequence view annotated by issues in geometry. Residues are color-coded according to the number of geometric quality criteria for which they contain at least one outlier: green = 0, yellow = 1, orange = 2 and red = 3 or more. Stretches of 2 or more consecutive residues without any outlier are shown as a green connector. Residues present in the sample, but not in the model, are shown in grey.

- Molecule 1: Spike glycoprotein



L1004	Q1005	T1006	L1012	I1013	M1029	V1033	Q1036	S1037	L1049	F1052	P1053	Q1054	P1057	V1061	E1072	F1075	T1076	I1077	I1078	P1079	C1082	H1083	E1092	V1096	S1097	T1100	H1101	V1129	I1130	I1132	T1136	V1137	Q1142	L1143	E1144	LEU	ASP	SER	PHE	GLU	GLN
-------	-------	-------	-------	-------	-------	-------	-------	-------	-------	-------	-------	-------	-------	-------	-------	-------	-------	-------	-------	-------	-------	-------	-------	-------	-------	-------	-------	-------	-------	-------	-------	-------	-------	-------	-------	-----	-----	-----	-----	-----	-----

● Molecule 1: Spike glycoprotein



ALA	THR	MET	PHE	VAL	PHE	LEU	VAL	LEU	LEU	LEU	PRO	LEU	VAL	SER	SER	SER	GLN	CYS	R102	VAL	MET	PRO	GLY	SER	ILE	VAL	T23	T24	T25	T29	R30	S31	R34	Y37	D40	K41	V42	F43	R44	V47	L48	F55	F56	P57	N61	V62	F65	H66	A67	I68	SER	GLY	THR																																																																																																																																																																																																																																																																																																																																																																																																																																																																																																																																																																																																																																																																																																																																																																																																																																																																																																																																																																																																																																																																																																																	
ASN	GLY	THR	LYS	ARG	PHE	D80	N81	L84	E96	E97	S98	N99	I101	R102	G103	F106	G107	T108	T109	L110	K113	Q115	S116	L117	L119	V120	M121	M122	M125	V126	F127	I128	K129	V130	C131	E132	F133	Q134	F135	C136	N137	D138	PHE	LEU	ASP	VAL	TTR	HIS	LYS	ASN																																																																																																																																																																																																																																																																																																																																																																																																																																																																																																																																																																																																																																																																																																																																																																																																																																																																																																																																																																																																																																																																																																																				
ASN	LYS	TRP	MET	GLU	SER	GLU	SER	G158	V159	Y160	S162	A163	N164	N165	C166	T167	F168	A169	F175	L176	M177	D178	G184	N188	L189	R190	E191	Y200	K206	H207	T208	P209	I210	I212	G213	R214	D215	P217	Q218	G219	F220	L223	L229	P230	T233	N234	I235	F238	Q239	T240	N244	L245	R246	SER	TYR	THR	THR	PRO	GLY	ASP	F323	P330	N331	N334	L335	C336	F337	F338	H339	E340	V341	F342	R343	A344	T345	R346	F347	A348	S349	V350	Y351	A352	R273	L276	L277	K278	G283	T284	D290	L296	I297	S297	L303	K304	S305	F306	T307	C379	V382	S383	P384	T385	K386	N487	L387	N388	S389	L390	R319	V320	R321	P322	V395																																																																																																																																																																																																																																																																																																																																																																																																																																																																																																																																																																																																																																																																																																																																																																																																																																																																																																																																																																																																																																																					
T323	E324	S325	L326	T327	R328	F329	P330	N331	N334	L335	C336	F337	F338	H339	E340	V341	F342	R343	A344	T345	R346	F347	A348	S349	V350	Y351	A352	R273	L276	L277	K278	G283	T284	D290	L296	I297	S297	L303	K304	S305	F306	T307	C379	V382	S383	P384	T385	K386	N487	L387	N388	S389	L390	R319	V320	R321	P322	V395																																																																																																																																																																																																																																																																																																																																																																																																																																																																																																																																																																																																																																																																																																																																																																																																																																																																																																																																																																																																																																																																																																												
V396	A397	D398	S399	T581	V503	L504	K403	E406	Q409	R509	V510	V511	P412	Q413	Q414	L418	Y421	N422	Y423	K424	F429	C432	V433	L434	A435	V436	N439	K440	D442	S443	G447	D450	Y451	V452	V453	R454	S455	F456	R457	D467	A475	Q463	Q464	V465	V466	V467	V468	V469	V470	V471	V472	V473	V474	V475	V476	V477	V478	V479	V480	V481	V482	V483	V484	V485	V486	V487	V488	V489	V490	V491	V492	V493	V494	V495	V496	V497	V498	V499	V500	V501	V502	V503	V504	V505	V506	V507	V508	V509	V510	V511	V512	V513	V514	V515	V516	V517	V518	V519	V520	V521	V522	V523	V524	V525	V526	V527	V528	V529	V530	V531	V532	V533	V534	V535	V536	V537	V538	V539	V540	V541	V542	V543	V544	V545	V546	V547	V548	V549	V550	V551	V552	V553	V554	V555	V556	V557	V558	V559	V560	V561	V562	V563	V564	V565	V566	V567	V568	V569	V570	V571	V572	V573	V574	V575	V576	V577	V578	V579	V580	V581	V582	V583	V584	V585	V586	V587	V588	V589	V590	V591	V592	V593	V594	V595	V596	V597	V598	V599	V600	V601	V602	V603	V604	V605	V606	V607	V608	V609	V610	V611	V612	V613	V614	V615	V616	V617	V618	V619	V620	V621	V622	V623	V624	V625	V626	V627	V628	V629	V630	V631	V632	V633	V634	V635	V636	V637	V638	V639	V640	V641	V642	V643	V644	V645	V646	V647	V648	V649	V650	V651	V652	V653	V654	V655	V656	V657	V658	V659	V660	V661	V662	V663	V664	V665	V666	V667	V668	V669	V670	V671	V672	V673	V674	V675	V676	V677	V678	V679	V680	V681	V682	V683	V684	V685	V686	V687	V688	V689	V690	V691	V692	V693	V694	V695	V696	V697	V698	V699	V700	V701	V702	V703	V704	V705	V706	V707	V708	V709	V710	V711	V712	V713	V714	V715	V716	V717	V718	V719	V720	V721	V722	V723	V724	V725	V726	V727	V728	V729	V730	V731	V732	V733	V734	V735	V736	V737	V738	V739	V740	V741	V742	V743	V744	V745	V746	V747	V748	V749	V750	V751	V752	V753	V754	V755	V756	V757	V758	V759	V760	V761	V762	V763	V764	V765	V766	V767	V768	V769	V770	V771	V772	V773	V774	V775	V776	V777	V778	V779	V780	V781	V782	V783	V784	V785	V786	V787	V788	V789	V790	V791	V792	V793	V794	V795	V796	V797	V798	V799	V800	V801	V802	V803	V804	V805	V806	V807	V808	V809	V810	V811	V812	V813	V814	V815	V816	V817	V818	V819	V820	V821	V822	V823	V824	V825	V826	V827	V828	V829	V830	V831	V832	V833	V834	V835	V836	V837	V838	V839	V840	V841	V842	V843	V844	V845	V846	V847	V848	V849	V850	V851	V852	V853	V854	V855	V856	V857	V858	V859	V860	V861	V862	V863	V864	V865	V866	V867	V868	V869	V870	V871	V872	V873	V874	V875	V876	V877	V878	V879	V880	V881	V882	V883	V884	V885	V886	V887	V888	V889	V890	V891	V892	V893	V894	V895	V896	V897	V898	V899	V900	V901	V902	V903	V904	V905	V906	V907	V908	V909	V910	V911	V912	V913	V914	V915	V916	V917	V918	V919	V920	V921	V922	V923	V924	V925	V926	V927	V928	V929	V930	V931	V932	V933	V934	V935	V936	V937	V938	V939	V940	V941	V942	V943	V944	V945	V946	V947	V948	V949	V950	V951	V952	V953	V954	V955	V956	V957	V958	V959	V960	V961	V962	V963	V964	V965	V966	V967	V968	V969	V970	V971	V972	V973	V974	V975	V976	V977	V978	V979	V980	V981	V982	V983	V984	V985	V986	V987	V988	V989	V990	V991	V992	V993	V994	V995	V996	V997	V998	V999	V1000	V1001	V1002	V1003	V1004	V1005	V1006	V1007	V1008	V1009	V1010	V1011	V1012	V1013	V1014	V1015	V1016	V1017	V1018	V1019	V1020	V1021	V1022	V1023	V1024	V1025	V1026	V1027	V1028	V1029	V1030	V1031	V1032	V1033	V1034	V1035	V1036	V1037	V1038	V1039	V1040	V1041	V1042	V1043	V1044	V1045	V1046	V1047	V1048	V1049	V1050	V1051	V1052	V1053	V1054	V1055	V1056	V1057	V1058	V1059	V1060	V1061	V1062	V1063	V1064	V1065	V1066	V1067	V1068	V1069	V1070	V1071	V1072	V1073	V1074	V1075	V1076	V1077	V1078	V1079	V1080	V1081	V1082	V1083	V1084	V1085	V1086	V1087	V1088	V1089	V1090	V1091	V1092	V1093	V1094	V1095	V1096	V1097	V1098	V1099	V1100	V1101	V1102	V1103	V1104	V1105	V1106	V1107	V1108	V1109	V1110	V1111	V1112	V1113	V1114	V1115	V1116	V1117	V1118	V1119	V1120	V1121	V1122	V1123	V1124	V1125	V1126	V1127	V1128	V1129	V1130	V1131	V1132	V1133	V1134	V1135	V1136	V1137	V1138	V1139	V1140	V1141	V1142	V1143	V1144	V1145	V1146	V1147	V1148	V1149	V1150	V1151	V1152	V1153	V1154	V1155	V1156	V1157	V1158	V1159	V1160	V1161	V1162	V1163	V1164	V1165	V1166	V1167	V1168	V1169	V1170	V1171	V1172	V1173	V1174	V1175	V1176	V1177	V1178	V1179	V1180	V1181	V1182	V1183	V1184	V1185	V1186	V1187	V1188	V1189	V1190	V1191	V1192	V1193	V1194	V1195	V1196	V1197	V1198	V1199	V1200	V1201	V1202	V1203	V1204	V1205	V1206	V1207	V1208	V1209	V1210	V1211	V1212	V1213	V1214	V1215	V1216	V1217	V1218	V1219	V1220	V1221	V1222	V1223	V1224	V1225	V1226	V1227	V1228	V1229	V1230	V1231	V1232	V1233	V1234	V1235	V1236	V1237	V1238	V1239	V1240	V1241	V1242	V1243	V1244	V1245	V1246	V1247	V1248	V1249	V1250	V1251	V1252	V1253	V1254	V1255	V1256	V1257	V1258	V1259	V1260	V1261	V1262	V1263	V1264	V1265	V1266	V1267	V1268	V1269	V1270	V1271	V1272	V1273	V1274	V1275	V1276	V1277	V1278	V1279	V1280	V1281	V1282	V1283	V1284	V1285	V1286	V1287	V1288	V1289	V1290	V1291	V1292	V1293	V1294	V1295	V1296	V1297	V1298	V1299	V1300	V1301	V1302	V1303	V1304	V1305	V1306	V1307	V1308	V1309	V1310	V1311	V1312	V1313	V1314	V1315	V1316	V1317	V1318	V1319	V1320	V1321	V1322	V1323	V1324	V1325	V1326	V1327	V1328	V1329	V1330	V1331	V1332	V1333	V1334	V1335	V1336	V1337	V1338	V1339	V1340	V1341	V1342	V1343	V1344	V1345	V1346	V1347	V1348	V1349	V1350	V1351	V1352	V1353	V1354	V1355	V1356	V1357	V1358	V1359	V1360	V1361	V1362	V1363	V1364	V1365	V1366	V1367	V1368	V1369	V1370	V1371	V1372	V1373	V1374	V1375	V1376	V1377	V1378	V1379	V1380	V1381	V1382	V1383	V1384	V1385	V1386	V1387	V1388	V1389	V1390	V1391	V1392	V1393	V1394	V1395	V1396	V1397	V1398	V1399	V1400	V1401	V1402	V1403	V1404	V1405	V1406	V1407	V1408	V1409	V1410	V1411	V1412	V1413	V1414	V1415	V1416	V1417	V1418	V1419	V1420	V1421	V1422	V1423	V1424	V1425	V1426	V1427	V1428	V1429	V1430	V1431	V1432	V1433	V1434	V1435	V1436	V1437	V1438	V1439	V1440	V1441	V1442	V1443	V1444	V1445	V1446	V1447	V1448	V1449	V1450	V1451	V1452	V1453	V1454	V1455	V1456	V1457	V1458	V1459	V1460	V1461	V1462	V1463	V1464	V1465	V1466	V1467	V1468	V1469	V1470	V1471	V1472	V1473	V1474	V1475	V1476	V1477	V1478	V1479	V1480	V1481	V1482	V1483	V1484	V1485	V1486	V1487	V1488	V1489	V1490	V1491	V1492	V1493	V1494	V1495	V1496	V1497	V1498	V1499	V1500	V1501	V1502	V1503	V1504	V1505	V1506	V1507	V1508	V1509	V1510	V1511	V1512	V1513	V1514	V1515	V1516	V1517	V1518	V1519	V1520	V1521	V1522	V1523	V1524	V1525	V1526	V1527	V1528	V1529	V1530	V1531	V1532	V1533	V1534	V1535	V1536	V1537	V1538	V1539	V1540	V1541	V1542	V1543	V1544	V1545	V1546	V1547

4 Experimental information

Property	Value	Source
EM reconstruction method	SINGLE PARTICLE	Depositor
Imposed symmetry	POINT, Not provided	
Number of particles used	301841	Depositor
Resolution determination method	FSC 0.143 CUT-OFF	Depositor
CTF correction method	PHASE FLIPPING ONLY	Depositor
Microscope	FEI TITAN KRIOS	Depositor
Voltage (kV)	300	Depositor
Electron dose ($e^-/\text{\AA}^2$)	60	Depositor
Minimum defocus (nm)	1200	Depositor
Maximum defocus (nm)	2000	Depositor
Magnification	Not provided	
Image detector	FEI FALCON IV (4k x 4k)	Depositor

5 Model quality [i](#)

5.1 Standard geometry [i](#)

Bond lengths and bond angles in the following residue types are not validated in this section: IDU, NAG

The Z score for a bond length (or angle) is the number of standard deviations the observed value is removed from the expected value. A bond length (or angle) with $|Z| > 5$ is considered an outlier worth inspection. RMSZ is the root-mean-square of all Z scores of the bond lengths (or angles).

Mol	Chain	Bond lengths		Bond angles	
		RMSZ	# Z >5	RMSZ	# Z >5
1	A	0.44	0/8514	0.60	0/11588
1	B	0.45	0/8514	0.60	0/11588
1	C	0.44	0/8514	0.60	0/11588
All	All	0.44	0/25542	0.60	0/34764

Chiral center outliers are detected by calculating the chiral volume of a chiral center and verifying if the center is modelled as a planar moiety or with the opposite hand. A planarity outlier is detected by checking planarity of atoms in a peptide group, atoms in a mainchain group or atoms of a sidechain that are expected to be planar.

Mol	Chain	#Chirality outliers	#Planarity outliers
1	A	0	2
1	B	0	3
1	C	0	4
All	All	0	9

There are no bond length outliers.

There are no bond angle outliers.

There are no chirality outliers.

5 of 9 planarity outliers are listed below:

Mol	Chain	Res	Type	Group
1	A	328	ARG	Sidechain
1	C	328	ARG	Sidechain
1	C	346	ARG	Sidechain
1	C	567	ARG	Sidechain
1	C	577	ARG	Sidechain

5.2 Too-close contacts [i](#)

In the following table, the Non-H and H(model) columns list the number of non-hydrogen atoms and hydrogen atoms in the chain respectively. The H(added) column lists the number of hydrogen atoms added and optimized by MolProbity. The Clashes column lists the number of clashes within the asymmetric unit, whereas Symm-Clashes lists symmetry-related clashes.

Mol	Chain	Non-H	H(model)	H(added)	Clashes	Symm-Clashes
1	A	8314	0	8094	383	0
1	B	8314	0	8094	363	0
1	C	8314	0	8094	396	0
2	A	252	0	234	6	0
2	B	252	0	234	5	0
2	C	252	0	234	10	0
3	B	15	0	4	1	0
All	All	25713	0	24988	993	0

The all-atom clashscore is defined as the number of clashes found per 1000 atoms (including hydrogen atoms). The all-atom clashscore for this structure is 20.

The worst 5 of 993 close contacts within the same asymmetric unit are listed below, sorted by their clash magnitude.

Atom-1	Atom-2	Interatomic distance (Å)	Clash overlap (Å)
1:C:430:THR:CG2	1:C:517:LEU:HD12	1.63	1.26
1:C:503:VAL:CG2	1:A:505:HIS:CE1	2.20	1.25
1:C:759:PHE:HZ	1:A:1002:GLN:CG	1.49	1.24
1:A:503:VAL:CG2	1:B:505:HIS:CE1	2.21	1.23
1:A:759:PHE:HZ	1:B:1002:GLN:CG	1.56	1.17

There are no symmetry-related clashes.

5.3 Torsion angles [i](#)

5.3.1 Protein backbone [i](#)

In the following table, the Percentiles column shows the percent Ramachandran outliers of the chain as a percentile score with respect to all PDB entries followed by that with respect to all EM entries.

The Analysed column shows the number of residues for which the backbone conformation was analysed, and the total number of residues.

Mol	Chain	Analysed	Favoured	Allowed	Outliers	Percentiles	
1	A	1053/1206 (87%)	944 (90%)	91 (9%)	18 (2%)	7	33
1	B	1053/1206 (87%)	944 (90%)	92 (9%)	17 (2%)	8	35
1	C	1053/1206 (87%)	942 (90%)	91 (9%)	20 (2%)	6	31
All	All	3159/3618 (87%)	2830 (90%)	274 (9%)	55 (2%)	10	33

5 of 55 Ramachandran outliers are listed below:

Mol	Chain	Res	Type
1	C	329	PHE
1	C	348	ALA
1	C	527	PRO
1	C	536	ASN
1	C	745	ASP

5.3.2 Protein sidechains [i](#)

In the following table, the Percentiles column shows the percent sidechain outliers of the chain as a percentile score with respect to all PDB entries followed by that with respect to all EM entries.

The Analysed column shows the number of residues for which the sidechain conformation was analysed, and the total number of residues.

Mol	Chain	Analysed	Rotameric	Outliers	Percentiles	
1	A	925/1054 (88%)	887 (96%)	38 (4%)	26	56
1	B	925/1054 (88%)	892 (96%)	33 (4%)	30	59
1	C	925/1054 (88%)	885 (96%)	40 (4%)	25	54
All	All	2775/3162 (88%)	2664 (96%)	111 (4%)	29	56

5 of 111 residues with a non-rotameric sidechain are listed below:

Mol	Chain	Res	Type
1	A	374	PHE
1	B	1136	THR
1	A	939	PHE
1	B	1132	ILE
1	B	759	PHE

Sometimes sidechains can be flipped to improve hydrogen bonding and reduce clashes. 5 of 22 such sidechains are listed below:

Mol	Chain	Res	Type
1	B	207	HIS
1	B	556	ASN
1	B	540	ASN
1	B	804	GLN
1	C	965	GLN

5.3.3 RNA [i](#)

There are no RNA molecules in this entry.

5.4 Non-standard residues in protein, DNA, RNA chains [i](#)

There are no non-standard protein/DNA/RNA residues in this entry.

5.5 Carbohydrates [i](#)

There are no oligosaccharides in this entry.

5.6 Ligand geometry [i](#)

55 ligands are modelled in this entry.

In the following table, the Counts columns list the number of bonds (or angles) for which Mogul statistics could be retrieved, the number of bonds (or angles) that are observed in the model and the number of bonds (or angles) that are defined in the Chemical Component Dictionary. The Link column lists molecule types, if any, to which the group is linked. The Z score for a bond length (or angle) is the number of standard deviations the observed value is removed from the expected value. A bond length (or angle) with $|Z| > 2$ is considered an outlier worth inspection. RMSZ is the root-mean-square of all Z scores of the bond lengths (or angles).

Mol	Type	Chain	Res	Link	Bond lengths			Bond angles		
					Counts	RMSZ	$\# Z > 2$	Counts	RMSZ	$\# Z > 2$
2	NAG	C	1313	1	14,14,15	0.38	0	17,19,21	0.45	0
2	NAG	A	1310	1	14,14,15	0.39	0	17,19,21	0.61	0
2	NAG	A	1311	1	14,14,15	0.37	0	17,19,21	0.54	0
2	NAG	B	1313	1	14,14,15	0.41	0	17,19,21	0.81	0
2	NAG	B	1303	1	14,14,15	0.39	0	17,19,21	0.74	0
2	NAG	B	1314	1	14,14,15	0.39	0	17,19,21	0.36	0
2	NAG	A	1306	1	14,14,15	0.41	0	17,19,21	0.71	0
2	NAG	C	1306	1	14,14,15	0.39	0	17,19,21	0.35	0
2	NAG	B	1319	1	14,14,15	0.38	0	17,19,21	0.45	0
2	NAG	B	1305	1	14,14,15	0.42	0	17,19,21	0.70	1 (5%)

Mol	Type	Chain	Res	Link	Bond lengths			Bond angles		
					Counts	RMSZ	# Z > 2	Counts	RMSZ	# Z > 2
2	NAG	C	1308	1	14,14,15	0.39	0	17,19,21	0.70	0
2	NAG	A	1315	1	14,14,15	0.40	0	17,19,21	0.38	0
2	NAG	C	1315	1	14,14,15	0.40	0	17,19,21	0.41	0
2	NAG	A	1316	1	14,14,15	0.39	0	17,19,21	0.64	0
2	NAG	B	1315	1	14,14,15	0.39	0	17,19,21	0.39	0
2	NAG	C	1301	1	14,14,15	0.40	0	17,19,21	0.77	0
2	NAG	A	1314	1	14,14,15	0.41	0	17,19,21	0.44	0
2	NAG	A	1307	1	14,14,15	0.38	0	17,19,21	0.75	1 (5%)
2	NAG	B	1307	1	14,14,15	0.40	0	17,19,21	0.74	1 (5%)
2	NAG	B	1301	1	14,14,15	0.38	0	17,19,21	0.77	0
2	NAG	C	1311	1	14,14,15	0.38	0	17,19,21	0.54	0
2	NAG	C	1309	1	14,14,15	0.40	0	17,19,21	0.36	0
2	NAG	B	1309	1	14,14,15	0.39	0	17,19,21	0.38	0
2	NAG	A	1302	1	14,14,15	0.37	0	17,19,21	0.97	1 (5%)
2	NAG	C	1318	1	14,14,15	0.37	0	17,19,21	0.48	0
2	NAG	B	1312	1	14,14,15	0.40	0	17,19,21	0.81	0
2	NAG	B	1318	1	14,14,15	0.38	0	17,19,21	0.49	0
2	NAG	A	1308	1	14,14,15	0.38	0	17,19,21	0.69	0
2	NAG	B	1306	1	14,14,15	0.41	0	17,19,21	0.70	0
2	NAG	C	1304	1	14,14,15	0.37	0	17,19,21	0.55	0
2	NAG	A	1317	1	14,14,15	0.41	0	17,19,21	0.81	0
2	NAG	C	1310	1	14,14,15	0.38	0	17,19,21	0.61	0
2	NAG	B	1310	1	14,14,15	0.39	0	17,19,21	0.62	0
2	NAG	C	1317	1	14,14,15	0.40	0	17,19,21	0.81	0
2	NAG	B	1304	1	14,14,15	0.38	0	17,19,21	0.54	0
2	NAG	A	1305	1	14,14,15	0.41	0	17,19,21	0.69	1 (5%)
2	NAG	C	1305	1	14,14,15	0.42	0	17,19,21	0.70	1 (5%)
2	NAG	B	1311	1	14,14,15	0.38	0	17,19,21	0.54	0
2	NAG	C	1307	1	14,14,15	0.39	0	17,19,21	0.74	1 (5%)
2	NAG	B	1302	1	14,14,15	0.39	0	17,19,21	0.66	1 (5%)
2	NAG	C	1303	1	14,14,15	0.39	0	17,19,21	0.74	0
2	NAG	A	1318	1	14,14,15	0.38	0	17,19,21	0.48	0
2	NAG	A	1309	1	14,14,15	0.40	0	17,19,21	0.52	0
2	NAG	A	1312	1	14,14,15	0.39	0	17,19,21	0.81	0
2	NAG	C	1312	1	14,14,15	0.39	0	17,19,21	0.81	0
2	NAG	C	1316	1	14,14,15	0.39	0	17,19,21	0.64	0
2	NAG	A	1301	1	14,14,15	0.40	0	17,19,21	0.76	0
2	NAG	A	1303	1	14,14,15	0.39	0	17,19,21	0.74	0
2	NAG	C	1302	1	14,14,15	0.39	0	17,19,21	0.75	1 (5%)
2	NAG	A	1304	1	14,14,15	0.35	0	17,19,21	0.55	0
2	NAG	B	1308	1	14,14,15	0.39	0	17,19,21	0.69	0

Mol	Type	Chain	Res	Link	Bond lengths			Bond angles		
					Counts	RMSZ	# Z > 2	Counts	RMSZ	# Z > 2
3	IDU	B	1317	-	15,15,17	0.89	1 (6%)	15,22,26	1.03	1 (6%)
2	NAG	A	1313	1	14,14,15	0.40	0	17,19,21	0.81	0
2	NAG	C	1314	1	14,14,15	0.40	0	17,19,21	0.36	0
2	NAG	B	1316	1	14,14,15	0.39	0	17,19,21	0.64	0

In the following table, the Chirals column lists the number of chiral outliers, the number of chiral centers analysed, the number of these observed in the model and the number defined in the Chemical Component Dictionary. Similar counts are reported in the Torsion and Rings columns. '-' means no outliers of that kind were identified.

Mol	Type	Chain	Res	Link	Chirals	Torsions	Rings
2	NAG	C	1313	1	-	0/6/23/26	0/1/1/1
2	NAG	A	1310	1	-	1/6/23/26	0/1/1/1
2	NAG	A	1311	1	-	0/6/23/26	0/1/1/1
2	NAG	B	1313	1	-	0/6/23/26	0/1/1/1
2	NAG	B	1303	1	-	0/6/23/26	0/1/1/1
2	NAG	B	1314	1	-	0/6/23/26	0/1/1/1
2	NAG	A	1306	1	-	0/6/23/26	0/1/1/1
2	NAG	C	1306	1	-	0/6/23/26	0/1/1/1
2	NAG	B	1319	1	-	0/6/23/26	0/1/1/1
2	NAG	B	1305	1	-	0/6/23/26	0/1/1/1
2	NAG	C	1308	1	-	0/6/23/26	0/1/1/1
2	NAG	A	1315	1	-	3/6/23/26	0/1/1/1
2	NAG	C	1315	1	-	3/6/23/26	0/1/1/1
2	NAG	A	1316	1	-	0/6/23/26	0/1/1/1
2	NAG	B	1315	1	-	3/6/23/26	0/1/1/1
2	NAG	C	1301	1	-	0/6/23/26	0/1/1/1
2	NAG	A	1314	1	-	0/6/23/26	0/1/1/1
2	NAG	A	1307	1	-	0/6/23/26	0/1/1/1
2	NAG	B	1307	1	-	0/6/23/26	0/1/1/1
2	NAG	B	1301	1	-	0/6/23/26	0/1/1/1
2	NAG	C	1311	1	-	0/6/23/26	0/1/1/1
2	NAG	C	1309	1	-	1/6/23/26	0/1/1/1
2	NAG	B	1309	1	-	1/6/23/26	0/1/1/1
2	NAG	A	1302	1	-	1/6/23/26	0/1/1/1
2	NAG	C	1318	1	-	0/6/23/26	0/1/1/1
2	NAG	B	1312	1	-	0/6/23/26	0/1/1/1
2	NAG	B	1318	1	-	0/6/23/26	0/1/1/1
2	NAG	A	1308	1	-	0/6/23/26	0/1/1/1
2	NAG	B	1306	1	-	0/6/23/26	0/1/1/1
2	NAG	C	1304	1	-	0/6/23/26	0/1/1/1
2	NAG	A	1317	1	-	0/6/23/26	0/1/1/1

Continued on next page...

Continued from previous page...

Mol	Type	Chain	Res	Link	Chirals	Torsions	Rings
2	NAG	C	1310	1	-	1/6/23/26	0/1/1/1
2	NAG	B	1310	1	-	1/6/23/26	0/1/1/1
2	NAG	C	1317	1	-	0/6/23/26	0/1/1/1
2	NAG	B	1304	1	-	0/6/23/26	0/1/1/1
2	NAG	A	1305	1	-	0/6/23/26	0/1/1/1
2	NAG	C	1305	1	-	0/6/23/26	0/1/1/1
2	NAG	B	1311	1	-	0/6/23/26	0/1/1/1
2	NAG	C	1307	1	-	0/6/23/26	0/1/1/1
2	NAG	B	1302	1	-	1/6/23/26	0/1/1/1
2	NAG	C	1303	1	-	0/6/23/26	0/1/1/1
2	NAG	A	1318	1	-	0/6/23/26	0/1/1/1
2	NAG	A	1309	1	-	1/6/23/26	0/1/1/1
2	NAG	A	1312	1	-	0/6/23/26	0/1/1/1
2	NAG	C	1312	1	-	0/6/23/26	0/1/1/1
2	NAG	C	1316	1	-	0/6/23/26	0/1/1/1
2	NAG	A	1301	1	-	0/6/23/26	0/1/1/1
2	NAG	A	1303	1	-	0/6/23/26	0/1/1/1
2	NAG	C	1302	1	-	1/6/23/26	0/1/1/1
2	NAG	A	1304	1	-	0/6/23/26	0/1/1/1
2	NAG	B	1308	1	-	0/6/23/26	0/1/1/1
3	IDU	B	1317	-	-	3/9/22/29	1/1/1/1
2	NAG	A	1313	1	-	0/6/23/26	0/1/1/1
2	NAG	C	1314	1	-	0/6/23/26	0/1/1/1
2	NAG	B	1316	1	-	0/6/23/26	0/1/1/1

All (1) bond length outliers are listed below:

Mol	Chain	Res	Type	Atoms	Z	Observed(Å)	Ideal(Å)
3	B	1317	IDU	O6-C6	-2.89	1.21	1.30

The worst 5 of 10 bond angle outliers are listed below:

Mol	Chain	Res	Type	Atoms	Z	Observed(°)	Ideal(°)
2	A	1302	NAG	C2-N2-C7	3.53	127.92	122.90
2	C	1302	NAG	C2-N2-C7	2.59	126.60	122.90
3	B	1317	IDU	O6-C6-C5	2.36	119.77	113.03
2	C	1307	NAG	C1-O5-C5	2.28	115.28	112.19
2	A	1307	NAG	C1-O5-C5	2.27	115.27	112.19

There are no chirality outliers.

5 of 21 torsion outliers are listed below:

Mol	Chain	Res	Type	Atoms
3	B	1317	IDU	C3-C2-O2-S
3	B	1317	IDU	O5-C5-C6-O61
2	C	1315	NAG	C8-C7-N2-C2
2	C	1315	NAG	O7-C7-N2-C2
2	A	1315	NAG	C8-C7-N2-C2

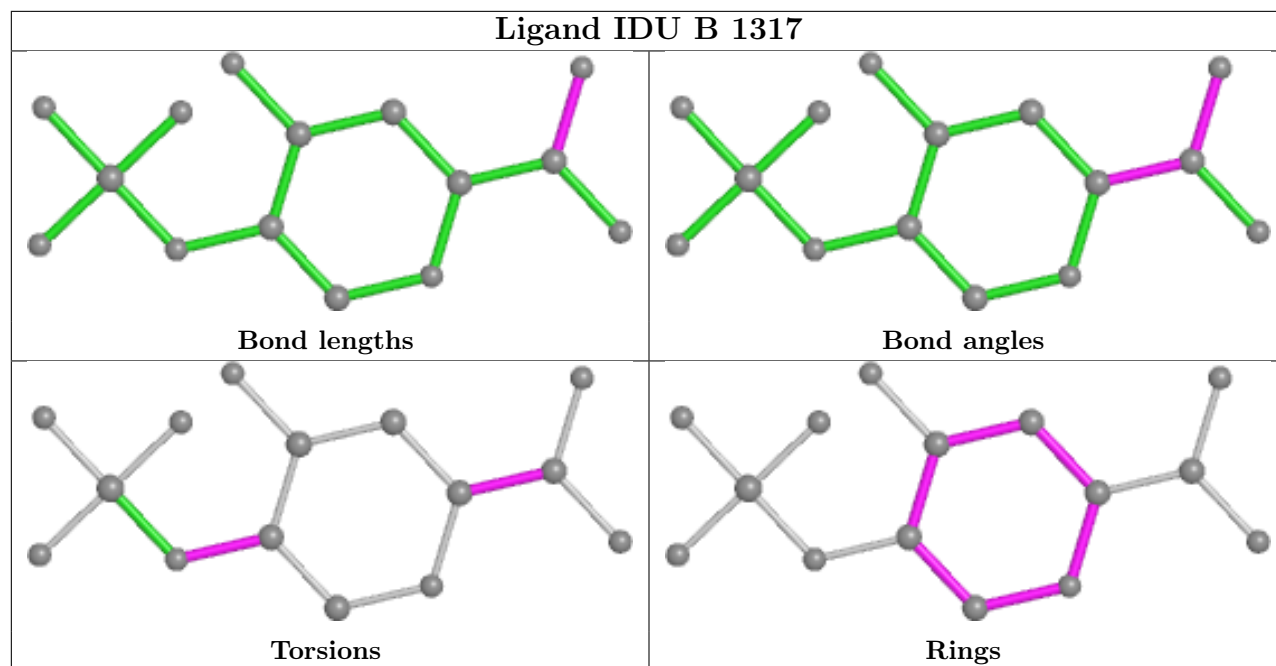
All (1) ring outliers are listed below:

Mol	Chain	Res	Type	Atoms
3	B	1317	IDU	C1-C2-C3-C4-C5-O5

13 monomers are involved in 22 short contacts:

Mol	Chain	Res	Type	Clashes	Symm-Clashes
2	C	1313	NAG	3	0
2	A	1311	NAG	1	0
2	A	1315	NAG	3	0
2	C	1315	NAG	3	0
2	B	1315	NAG	3	0
2	C	1301	NAG	1	0
2	B	1301	NAG	1	0
2	C	1311	NAG	2	0
2	B	1311	NAG	1	0
2	A	1309	NAG	1	0
2	A	1301	NAG	1	0
2	C	1302	NAG	1	0
3	B	1317	IDU	1	0

The following is a two-dimensional graphical depiction of Mogul quality analysis of bond lengths, bond angles, torsion angles, and ring geometry for all instances of the Ligand of Interest. In addition, ligands with molecular weight > 250 and outliers as shown on the validation Tables will also be included. For torsion angles, if less than 5% of the Mogul distribution of torsion angles is within 10 degrees of the torsion angle in question, then that torsion angle is considered an outlier. Any bond that is central to one or more torsion angles identified as an outlier by Mogul will be highlighted in the graph. For rings, the root-mean-square deviation (RMSD) between the ring in question and similar rings identified by Mogul is calculated over all ring torsion angles. If the average RMSD is greater than 60 degrees and the minimal RMSD between the ring in question and any Mogul-identified rings is also greater than 60 degrees, then that ring is considered an outlier. The outliers are highlighted in purple. The color gray indicates Mogul did not find sufficient equivalents in the CSD to analyse the geometry.



5.7 Other polymers [i](#)

There are no such residues in this entry.

5.8 Polymer linkage issues [i](#)

There are no chain breaks in this entry.