



# Full wwPDB X-ray Structure Validation Report ⓘ

Dec 14, 2023 – 03:49 am GMT

PDB ID : 2XYS  
Title : Crystal structure of Aplysia californica AChBP in complex with strychnine  
Authors : Brams, M.; Pandya, A.; Kuzmin, D.; van Elk, R.; Krijnen, L.; Yakel, J.L.;  
Tsetlin, V.; Smit, A.B.; Ulens, C.  
Deposited on : 2010-11-19  
Resolution : 1.91 Å(reported)

This is a Full wwPDB X-ray Structure Validation Report for a publicly released PDB entry.

We welcome your comments at [validation@mail.wwpdb.org](mailto:validation@mail.wwpdb.org)

A user guide is available at

<https://www.wwpdb.org/validation/2017/XrayValidationReportHelp>

with specific help available everywhere you see the ⓘ symbol.

The types of validation reports are described at

<http://www.wwpdb.org/validation/2017/FAQs#types>.

---

The following versions of software and data (see [references ⓘ](#)) were used in the production of this report:

MolProbity : 4.02b-467  
Mogul : 1.8.4, CSD as541be (2020)  
Xtriage (Phenix) : 1.13  
EDS : 2.36  
buster-report : 1.1.7 (2018)  
Percentile statistics : 20191225.v01 (using entries in the PDB archive December 25th 2019)  
Refmac : 5.8.0158  
CCP4 : 7.0.044 (Gargrove)  
Ideal geometry (proteins) : Engh & Huber (2001)  
Ideal geometry (DNA, RNA) : Parkinson et al. (1996)  
Validation Pipeline (wwPDB-VP) : 2.36

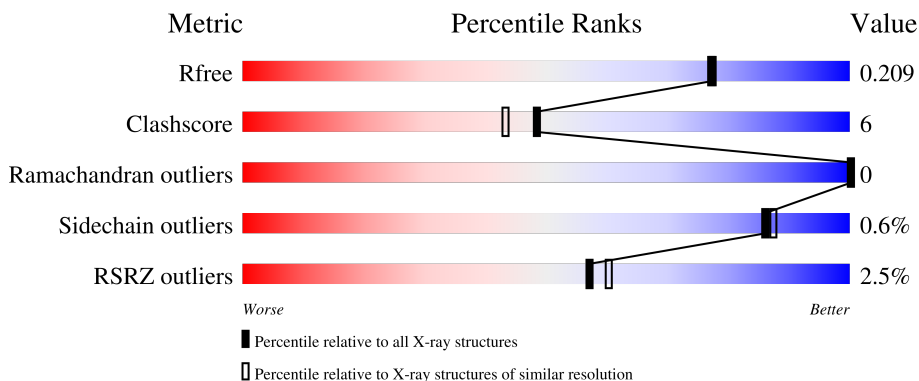
# 1 Overall quality at a glance i

The following experimental techniques were used to determine the structure:

*X-RAY DIFFRACTION*

The reported resolution of this entry is 1.91 Å.

Percentile scores (ranging between 0-100) for global validation metrics of the entry are shown in the following graphic. The table shows the number of entries on which the scores are based.



Metric	Whole archive (#Entries)	Similar resolution (#Entries, resolution range(Å))
$R_{free}$	130704	6207 (1.90-1.90)
Clashscore	141614	6847 (1.90-1.90)
Ramachandran outliers	138981	6760 (1.90-1.90)
Sidechain outliers	138945	6760 (1.90-1.90)
RSRZ outliers	127900	6082 (1.90-1.90)

The table below summarises the geometric issues observed across the polymeric chains and their fit to the electron density. The red, orange, yellow and green segments of the lower bar indicate the fraction of residues that contain outliers for  $\geq 3$ , 2, 1 and 0 types of geometric quality criteria respectively. A grey segment represents the fraction of residues that are not modelled. The numeric value for each fraction is indicated below the corresponding segment, with a dot representing fractions  $\leq 5\%$ . The upper red bar (where present) indicates the fraction of residues that have poor fit to the electron density. The numeric value is given above the bar.

Mol	Chain	Length	Quality of chain
1	A	217	<div style="display: flex; align-items: center;"> <div style="width: 3%; height: 10px; background-color: red; margin-right: 5px;"></div> <div style="width: 84%; height: 10px; background-color: green; margin-right: 5px;"></div> <div style="width: 11%; height: 10px; background-color: yellow; margin-right: 5px;"></div> <div style="width: 6%; height: 10px; background-color: grey;"></div> </div> <p style="margin-left: 20px;">3%      84%      11%      6%</p>
1	B	217	<div style="display: flex; align-items: center;"> <div style="width: 2%; height: 10px; background-color: red; margin-right: 5px;"></div> <div style="width: 85%; height: 10px; background-color: green; margin-right: 5px;"></div> <div style="width: 9%; height: 10px; background-color: yellow; margin-right: 5px;"></div> <div style="width: 6%; height: 10px; background-color: grey;"></div> </div> <p style="margin-left: 20px;">2%      85%      9%      6%</p>
1	C	217	<div style="display: flex; align-items: center;"> <div style="width: 2%; height: 10px; background-color: red; margin-right: 5px;"></div> <div style="width: 83%; height: 10px; background-color: green; margin-right: 5px;"></div> <div style="width: 12%; height: 10px; background-color: yellow; margin-right: 5px;"></div> <div style="width: 6%; height: 10px; background-color: grey;"></div> </div> <p style="margin-left: 20px;">2%      83%      12%      6%</p>
1	D	217	<div style="display: flex; align-items: center;"> <div style="width: 4%; height: 10px; background-color: red; margin-right: 5px;"></div> <div style="width: 79%; height: 10px; background-color: green; margin-right: 5px;"></div> <div style="width: 15%; height: 10px; background-color: yellow; margin-right: 5px;"></div> <div style="width: 6%; height: 10px; background-color: grey;"></div> </div> <p style="margin-left: 20px;">4%      79%      15%      6%</p>
1	E	217	<div style="display: flex; align-items: center;"> <div style="width: 0%; height: 10px; background-color: red; margin-right: 5px;"></div> <div style="width: 83%; height: 10px; background-color: green; margin-right: 5px;"></div> <div style="width: 11%; height: 10px; background-color: yellow; margin-right: 5px;"></div> <div style="width: 6%; height: 10px; background-color: grey;"></div> </div> <p style="margin-left: 20px;">%      83%      11%      6%</p>

## 2 Entry composition [i](#)

There are 3 unique types of molecules in this entry. The entry contains 9639 atoms, of which 0 are hydrogens and 0 are deuteriums.

In the tables below, the ZeroOcc column contains the number of atoms modelled with zero occupancy, the AltConf column contains the number of residues with at least one atom in alternate conformation and the Trace column contains the number of residues modelled with at most 2 atoms.

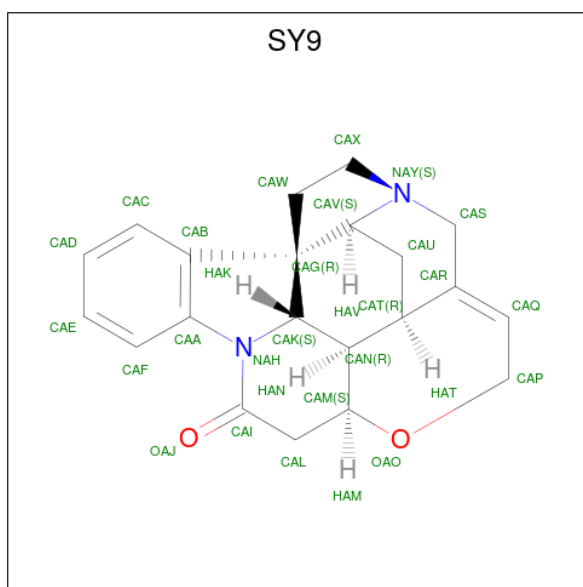
- Molecule 1 is a protein called SOLUBLE ACETYLCHOLINE RECEPTOR.

Mol	Chain	Residues	Atoms					ZeroOcc	AltConf	Trace
			Total	C	N	O	S			
1	A	205	1685	1067	275	333	10	0	6	0
1	B	205	1674	1061	272	332	9	0	5	0
1	C	205	1683	1066	273	335	9	0	6	0
1	D	205	1674	1063	271	330	10	0	4	0
1	E	205	1668	1059	270	329	10	0	4	0

There are 10 discrepancies between the modelled and reference sequences:

Chain	Residue	Modelled	Actual	Comment	Reference
A	41	VAL	ALA	conflict	UNP Q8WSF8
A	136	VAL	ALA	conflict	UNP Q8WSF8
B	41	VAL	ALA	conflict	UNP Q8WSF8
B	136	VAL	ALA	conflict	UNP Q8WSF8
C	41	VAL	ALA	conflict	UNP Q8WSF8
C	136	VAL	ALA	conflict	UNP Q8WSF8
D	41	VAL	ALA	conflict	UNP Q8WSF8
D	136	VAL	ALA	conflict	UNP Q8WSF8
E	41	VAL	ALA	conflict	UNP Q8WSF8
E	136	VAL	ALA	conflict	UNP Q8WSF8

- Molecule 2 is STRYCHNINE (three-letter code: SY9) (formula:  $C_{21}H_{22}N_2O_2$ ).



Mol	Chain	Residues	Atoms				ZeroOcc	AltConf
2	A	1	Total	C	N	O	0	0
			25	21	2	2		
2	B	1	Total	C	N	O	0	0
			25	21	2	2		
2	C	1	Total	C	N	O	0	0
			25	21	2	2		
2	D	1	Total	C	N	O	0	0
			25	21	2	2		
2	E	1	Total	C	N	O	0	0
			25	21	2	2		
2	E	1	Total	C	N	O	0	0
			25	21	2	2		

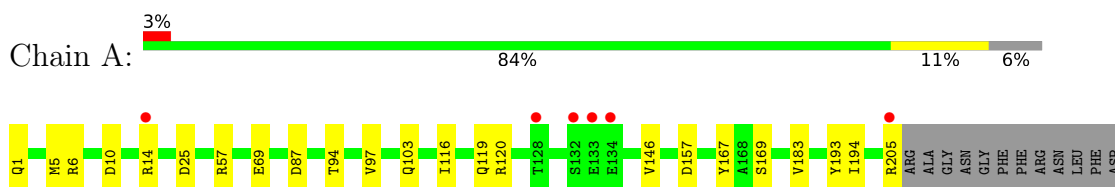
- Molecule 3 is water.

Mol	Chain	Residues	Atoms		ZeroOcc	AltConf
3	A	225	Total	O	0	0
			225	225		
3	B	206	Total	O	0	0
			206	206		
3	C	242	Total	O	0	0
			242	242		
3	D	203	Total	O	0	0
			203	203		
3	E	229	Total	O	0	0
			229	229		

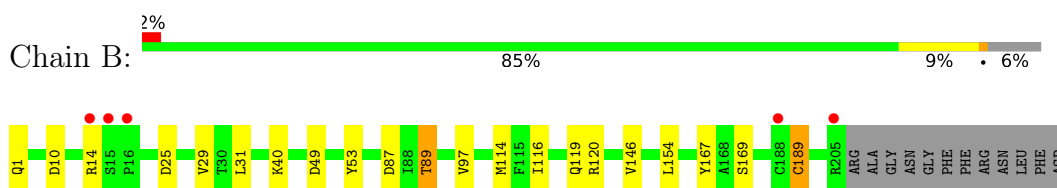
### 3 Residue-property plots [i](#)

These plots are drawn for all protein, RNA, DNA and oligosaccharide chains in the entry. The first graphic for a chain summarises the proportions of the various outlier classes displayed in the second graphic. The second graphic shows the sequence view annotated by issues in geometry and electron density. Residues are color-coded according to the number of geometric quality criteria for which they contain at least one outlier: green = 0, yellow = 1, orange = 2 and red = 3 or more. A red dot above a residue indicates a poor fit to the electron density ( $RSRZ > 2$ ). Stretches of 2 or more consecutive residues without any outlier are shown as a green connector. Residues present in the sample, but not in the model, are shown in grey.

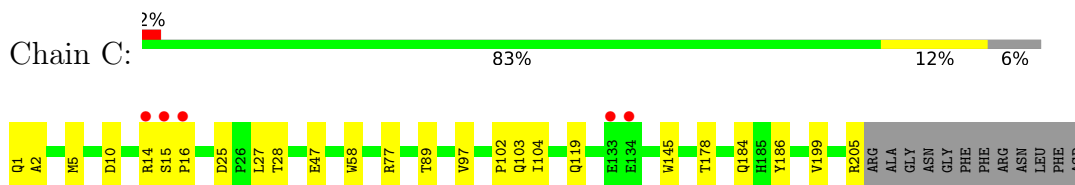
- Molecule 1: SOLUBLE ACETYLCHOLINE RECEPTOR



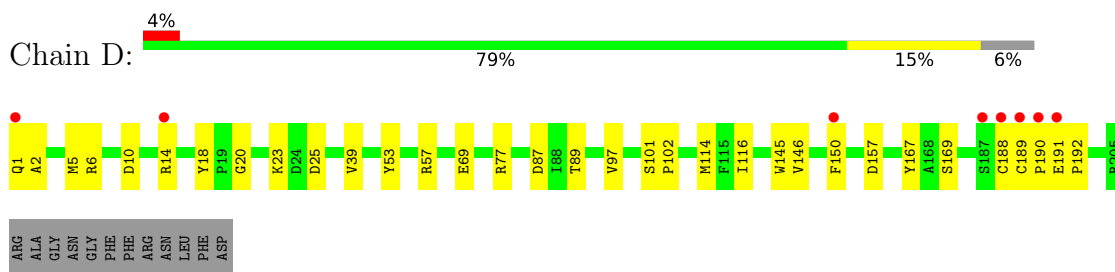
- Molecule 1: SOLUBLE ACETYLCHOLINE RECEPTOR



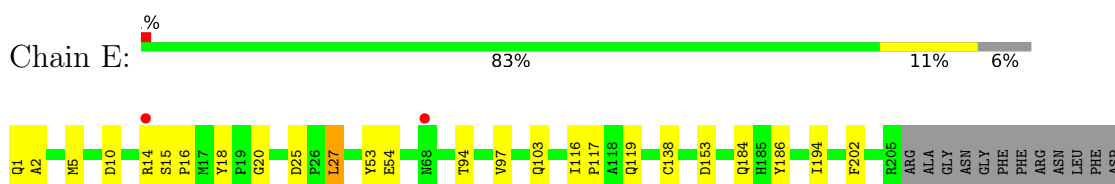
- Molecule 1: SOLUBLE ACETYLCHOLINE RECEPTOR



- Molecule 1: SOLUBLE ACETYLCHOLINE RECEPTOR



- Molecule 1: SOLUBLE ACETYLCHOLINE RECEPTOR



## 4 Data and refinement statistics

Property	Value	Source
Space group	P 41 21 2	Depositor
Cell constants a, b, c, $\alpha$ , $\beta$ , $\gamma$	100.59Å 100.59Å 289.68Å 90.00° 90.00° 90.00°	Depositor
Resolution (Å)	44.61 – 1.91 44.61 – 1.91	Depositor EDS
% Data completeness (in resolution range)	92.9 (44.61-1.91) 98.0 (44.61-1.91)	Depositor EDS
$R_{merge}$	0.08	Depositor
$R_{sym}$	(Not available)	Depositor
$\langle I/\sigma(I) \rangle$ <sup>1</sup>	1.57 (at 1.91Å)	Xtrriage
Refinement program	PHENIX (PHENIX.REFINE)	Depositor
R, $R_{free}$	0.172 , 0.210 0.175 , 0.209	Depositor DCC
$R_{free}$ test set	5722 reflections (5.03%)	wwPDB-VP
Wilson B-factor (Å <sup>2</sup> )	24.4	Xtrriage
Anisotropy	0.198	Xtrriage
Bulk solvent $k_{sol}$ (e/Å <sup>3</sup> ), $B_{sol}$ (Å <sup>2</sup> )	0.34 , 50.9	EDS
L-test for twinning <sup>2</sup>	$\langle  L  \rangle = 0.48$ , $\langle L^2 \rangle = 0.31$	Xtrriage
Estimated twinning fraction	No twinning to report.	Xtrriage
$F_o, F_c$ correlation	0.96	EDS
Total number of atoms	9639	wwPDB-VP
Average B, all atoms (Å <sup>2</sup> )	27.0	wwPDB-VP

Xtrriage's analysis on translational NCS is as follows: *The largest off-origin peak in the Patterson function is 2.76% of the height of the origin peak. No significant pseudotranslation is detected.*

<sup>1</sup>Intensities estimated from amplitudes.

<sup>2</sup>Theoretical values of  $\langle |L| \rangle$ ,  $\langle L^2 \rangle$  for acentric reflections are 0.5, 0.333 respectively for untwinned datasets, and 0.375, 0.2 for perfectly twinned datasets.

## 5 Model quality

### 5.1 Standard geometry

Bond lengths and bond angles in the following residue types are not validated in this section: SY9

The Z score for a bond length (or angle) is the number of standard deviations the observed value is removed from the expected value. A bond length (or angle) with  $|Z| > 5$  is considered an outlier worth inspection. RMSZ is the root-mean-square of all Z scores of the bond lengths (or angles).

Mol	Chain	Bond lengths		Bond angles	
		RMSZ	# Z  >5	RMSZ	# Z  >5
1	A	0.35	0/1725	0.55	0/2354
1	B	0.36	0/1714	0.58	0/2340
1	C	0.35	0/1723	0.55	0/2352
1	D	0.33	0/1714	0.53	0/2341
1	E	0.35	0/1708	0.55	0/2331
All	All	0.35	0/8584	0.55	0/11718

There are no bond length outliers.

There are no bond angle outliers.

There are no chirality outliers.

There are no planarity outliers.

### 5.2 Too-close contacts

In the following table, the Non-H and H(model) columns list the number of non-hydrogen atoms and hydrogen atoms in the chain respectively. The H(added) column lists the number of hydrogen atoms added and optimized by MolProbity. The Clashes column lists the number of clashes within the asymmetric unit, whereas Symm-Clashes lists symmetry-related clashes.

Mol	Chain	Non-H	H(model)	H(added)	Clashes	Symm-Clashes
1	A	1685	0	1625	18	0
1	B	1674	0	1612	19	0
1	C	1683	0	1616	25	0
1	D	1674	0	1618	27	0
1	E	1668	0	1611	23	0
2	A	25	0	22	3	0
2	B	25	0	22	1	0
2	C	25	0	22	2	0

*Continued on next page...*

Continued from previous page...

Mol	Chain	Non-H	H(model)	H(added)	Clashes	Symm-Clashes
2	D	25	0	22	4	0
2	E	50	0	44	0	0
3	A	225	0	0	2	0
3	B	206	0	0	2	0
3	C	242	0	0	4	0
3	D	203	0	0	2	0
3	E	229	0	0	0	0
All	All	9639	0	8214	100	0

The all-atom clashscore is defined as the number of clashes found per 1000 atoms (including hydrogen atoms). The all-atom clashscore for this structure is 6.

All (100) close contacts within the same asymmetric unit are listed below, sorted by their clash magnitude.

Atom-1	Atom-2	Interatomic distance (Å)	Clash overlap (Å)
1:C:10:ASP:HA	1:C:14:ARG:HD3	1.56	0.86
1:A:10:ASP:HA	1:A:14:ARG:HD3	1.59	0.83
1:D:10:ASP:HA	1:D:14:ARG:HD3	1.61	0.82
1:B:10:ASP:HA	1:B:14:ARG:HD3	1.61	0.81
1:D:114:MET:HG2	1:D:116[C]:ILE:HD11	1.68	0.76
1:E:153:ASP:HA	1:E:194[A]:ILE:HD12	1.73	0.70
1:E:10:ASP:HA	1:E:14:ARG:HD3	1.75	0.68
1:A:97:VAL:HG11	1:A:119:GLN:HE21	1.57	0.68
1:E:97:VAL:HG11	1:E:119:GLN:HE21	1.59	0.68
1:B:31[B]:LEU:HD23	1:B:154:LEU:HD22	1.76	0.66
1:B:89:THR:HG21	1:C:102:PRO:CD	2.26	0.66
1:E:153:ASP:OD1	1:E:194[A]:ILE:HD13	1.96	0.65
1:A:103:GLN:HG2	3:A:2142:HOH:O	1.96	0.64
1:B:89:THR:HG21	1:C:102:PRO:HD3	1.79	0.64
3:C:2068:HOH:O	1:D:39[B]:VAL:HG11	1.98	0.64
1:B:97[A]:VAL:HG11	1:B:119:GLN:HE21	1.64	0.63
1:D:25:ASP:OD2	1:E:1:GLN:HG3	1.99	0.63
1:C:184[A]:GLN:HG3	3:C:2224:HOH:O	2.02	0.60
1:D:6:ARG:NH2	1:D:69:GLU:O	2.34	0.60
1:C:97:VAL:HG11	1:C:119:GLN:HE21	1.66	0.59
1:D:114:MET:HG2	1:D:116[B]:ILE:HD11	1.84	0.59
1:D:191:GLU:HB2	1:D:192:PRO:HD2	1.85	0.59
2:A:1206:SY9:HAL1	1:B:53:TYR:HE2	1.68	0.58
1:A:25:ASP:OD2	1:B:1:GLN:HG3	2.04	0.58
2:A:1206:SY9:CAC	1:B:116[B]:ILE:HD13	2.36	0.56
1:B:114:MET:SD	1:B:116[B]:ILE:HD11	2.46	0.56

Continued on next page...



*Continued from previous page...*

Atom-1	Atom-2	Interatomic distance (Å)	Clash overlap (Å)
1:B:97[B]:VAL:HG12	3:B:2116:HOH:O	2.06	0.55
1:B:29:VAL:HG12	1:B:31[B]:LEU:CD2	2.37	0.55
1:D:97[B]:VAL:HG22	3:D:2121:HOH:O	2.06	0.55
1:C:27[B]:LEU:HD21	1:C:58:TRP:HB2	1.89	0.55
1:E:153:ASP:HA	1:E:194[A]:ILE:CD1	2.38	0.54
1:B:189:CYS:SG	2:B:1206:SY9:HAE	2.47	0.54
1:D:25:ASP:CG	1:E:1:GLN:HG3	2.29	0.52
1:C:103:GLN:HE21	1:C:103:GLN:HA	1.74	0.52
1:C:25:ASP:OD2	1:D:1:GLN:HG3	2.09	0.51
1:D:23:LYS:HG3	1:D:150:PHE:HB3	1.91	0.51
1:C:15:SER:OG	1:C:16:PRO:HD2	2.11	0.50
1:C:1:GLN:HA	1:C:1:GLN:OE1	2.10	0.50
1:C:89[A]:THR:HG21	1:C:145:TRP:CE3	2.46	0.49
1:C:178:THR:OG1	1:C:199[B]:VAL:HG22	2.12	0.49
3:B:2036:HOH:O	1:C:104:ILE:HD11	2.12	0.49
1:D:145:TRP:CD2	2:D:1206:SY9:HAX2	2.47	0.49
1:A:193:TYR:CE2	2:A:1206:SY9:HAU1	2.48	0.48
1:A:1:GLN:HA	1:A:1:GLN:OE1	2.14	0.48
1:E:2:ALA:HA	1:E:5:MET:CE	2.42	0.48
1:A:1:GLN:HG3	1:E:25:ASP:OD2	2.13	0.48
1:A:167:TYR:CZ	1:A:169:SER:HB2	2.49	0.48
1:D:114:MET:CG	1:D:116[C]:ILE:HD11	2.42	0.48
1:D:87:ASP:OD2	1:D:146:VAL:HG22	2.14	0.48
1:E:27[B]:LEU:C	1:E:27[B]:LEU:HD23	2.34	0.47
1:E:116[A]:ILE:HG23	1:E:116[A]:ILE:O	2.14	0.47
1:A:205:ARG:HG2	1:A:205:ARG:HH11	1.78	0.47
1:A:57[A]:ARG:NH2	1:A:157:ASP:OD2	2.41	0.47
1:E:97:VAL:HG11	1:E:119:GLN:NE2	2.28	0.47
1:C:15:SER:HB3	3:C:2021:HOH:O	2.14	0.47
1:C:47:GLU:HG2	3:C:2061:HOH:O	2.14	0.47
1:C:2:ALA:HA	1:C:5:MET:HE2	1.97	0.46
1:D:167:TYR:CZ	1:D:169:SER:HB2	2.50	0.46
2:D:1206:SY9:HAE	3:D:2196:HOH:O	2.16	0.46
1:D:2:ALA:HA	1:D:5:MET:HE2	1.98	0.45
1:D:57:ARG:NH2	1:D:157:ASP:OD2	2.38	0.45
1:B:25:ASP:CG	1:C:1:GLN:HG3	2.36	0.45
1:A:183:VAL:HG22	1:A:194:ILE:HD12	1.97	0.45
1:E:2:ALA:HA	1:E:5:MET:HE2	1.98	0.45
1:B:146:VAL:HG23	1:C:77:ARG:HG2	1.98	0.44
1:A:6:ARG:NH2	1:A:69:GLU:O	2.44	0.44
1:B:25:ASP:OD2	1:C:1:GLN:HG3	2.18	0.44

*Continued on next page...*

*Continued from previous page...*

Atom-1	Atom-2	Interatomic distance (Å)	Clash overlap (Å)
1:E:184:GLN:HG2	1:E:186:TYR:CZ	2.53	0.44
1:C:103:GLN:HA	1:C:103:GLN:NE2	2.32	0.44
1:A:120:ARG:HD2	1:E:94:THR:O	2.18	0.44
2:C:1206:SY9:HAL1	1:D:53:TYR:HE2	1.83	0.43
1:D:191:GLU:H	1:D:191:GLU:CD	2.20	0.43
1:D:188:CYS:SG	2:D:1206:SY9:CAF	3.06	0.43
1:C:199[B]:VAL:O	1:C:199[B]:VAL:HG23	2.19	0.43
1:E:15:SER:OG	1:E:16:PRO:HD2	2.19	0.43
1:E:18:TYR:CE2	1:E:20:GLY:HA2	2.54	0.42
1:E:103:GLN:HA	1:E:103:GLN:HE21	1.84	0.42
1:A:57[A]:ARG:HG2	3:A:2148:HOH:O	2.19	0.42
1:A:5[B]:MET:SD	1:E:16:PRO:HB2	2.59	0.42
1:A:116[A]:ILE:HG23	1:A:116[A]:ILE:O	2.20	0.42
1:E:138:CYS:SG	1:E:202:PHE:HE1	2.43	0.42
1:B:87:ASP:O	1:B:89:THR:HG22	2.20	0.41
1:D:18:TYR:CE2	1:D:20:GLY:HA2	2.54	0.41
1:D:101:SER:HB2	1:D:102:PRO:HD2	2.03	0.41
1:C:145:TRP:CD2	2:C:1206:SY9:HAX2	2.55	0.41
1:D:116[C]:ILE:HD12	1:D:116[C]:ILE:N	2.36	0.41
1:D:189:CYS:HA	1:D:190:PRO:HD3	1.73	0.41
1:D:114:MET:HG2	1:D:116[C]:ILE:CD1	2.45	0.41
1:C:27[A]:LEU:HD12	1:C:27[A]:LEU:HA	1.97	0.41
1:A:87:ASP:OD2	1:A:146:VAL:HG22	2.21	0.41
2:D:1206:SY9:HAL1	1:E:53:TYR:HE2	1.85	0.41
1:B:167:TYR:CZ	1:B:169:SER:HB2	2.55	0.41
1:C:27[B]:LEU:HD23	1:C:28:THR:N	2.36	0.41
1:B:40:LYS:HB3	1:B:49:ASP:HB2	2.02	0.41
1:E:54:GLU:O	1:E:117:PRO:HD2	2.21	0.40
1:E:103:GLN:HA	1:E:103:GLN:NE2	2.36	0.40
1:A:94:THR:O	1:B:120:ARG:HD2	2.21	0.40
1:D:1:GLN:OE1	1:D:1:GLN:HA	2.20	0.40
1:C:184[A]:GLN:HB2	1:C:186:TYR:CE2	2.57	0.40
1:D:2:ALA:HA	1:D:5:MET:CE	2.52	0.40

There are no symmetry-related clashes.

## 5.3 Torsion angles [i](#)

### 5.3.1 Protein backbone [i](#)

In the following table, the Percentiles column shows the percent Ramachandran outliers of the chain as a percentile score with respect to all X-ray entries followed by that with respect to entries of similar resolution.

The Analysed column shows the number of residues for which the backbone conformation was analysed, and the total number of residues.

Mol	Chain	Analysed	Favoured	Allowed	Outliers	Percentiles	
1	A	209/217 (96%)	209 (100%)	0	0	100	100
1	B	208/217 (96%)	206 (99%)	2 (1%)	0	100	100
1	C	209/217 (96%)	207 (99%)	2 (1%)	0	100	100
1	D	208/217 (96%)	206 (99%)	2 (1%)	0	100	100
1	E	207/217 (95%)	206 (100%)	1 (0%)	0	100	100
All	All	1041/1085 (96%)	1034 (99%)	7 (1%)	0	100	100

There are no Ramachandran outliers to report.

### 5.3.2 Protein sidechains [i](#)

In the following table, the Percentiles column shows the percent sidechain outliers of the chain as a percentile score with respect to all X-ray entries followed by that with respect to entries of similar resolution.

The Analysed column shows the number of residues for which the sidechain conformation was analysed, and the total number of residues.

Mol	Chain	Analysed	Rotameric	Outliers	Percentiles	
1	A	194/197 (98%)	194 (100%)	0	100	100
1	B	193/197 (98%)	191 (99%)	2 (1%)	76	76
1	C	194/197 (98%)	193 (100%)	1 (0%)	88	89
1	D	193/197 (98%)	191 (99%)	2 (1%)	76	76
1	E	192/197 (98%)	190 (99%)	2 (1%)	76	76
All	All	966/985 (98%)	959 (99%)	7 (1%)	86	84

All (7) residues with a non-rotameric sidechain are listed below:

Mol	Chain	Res	Type
1	B	89	THR
1	B	189	CYS
1	C	205	ARG
1	D	77	ARG
1	D	89	THR
1	E	27[A]	LEU
1	E	27[B]	LEU

Sometimes sidechains can be flipped to improve hydrogen bonding and reduce clashes. All (13) such sidechains are listed below:

Mol	Chain	Res	Type
1	A	119	GLN
1	B	119	GLN
1	B	182	GLN
1	B	184	GLN
1	B	185	HIS
1	C	103	GLN
1	C	119	GLN
1	D	55	GLN
1	D	119	GLN
1	E	55	GLN
1	E	103	GLN
1	E	119	GLN
1	E	184	GLN

### 5.3.3 RNA [i](#)

There are no RNA molecules in this entry.

### 5.4 Non-standard residues in protein, DNA, RNA chains [i](#)

There are no non-standard protein/DNA/RNA residues in this entry.

### 5.5 Carbohydrates [i](#)

There are no monosaccharides in this entry.

### 5.6 Ligand geometry [i](#)

6 ligands are modelled in this entry.

In the following table, the Counts columns list the number of bonds (or angles) for which Mogul statistics could be retrieved, the number of bonds (or angles) that are observed in the model and the number of bonds (or angles) that are defined in the Chemical Component Dictionary. The Link column lists molecule types, if any, to which the group is linked. The Z score for a bond length (or angle) is the number of standard deviations the observed value is removed from the expected value. A bond length (or angle) with  $|Z| > 2$  is considered an outlier worth inspection. RMSZ is the root-mean-square of all Z scores of the bond lengths (or angles).

Mol	Type	Chain	Res	Link	Bond lengths			Bond angles		
					Counts	RMSZ	# Z  > 2	Counts	RMSZ	# Z  > 2
2	SY9	E	1206	-	31,31,31	1.72	3 (9%)	51,51,51	2.40	16 (31%)
2	SY9	B	1206	-	31,31,31	1.72	3 (9%)	51,51,51	2.46	19 (37%)
2	SY9	C	1206	-	31,31,31	1.70	3 (9%)	51,51,51	2.38	19 (37%)
2	SY9	D	1206	-	31,31,31	1.74	3 (9%)	51,51,51	2.57	19 (37%)
2	SY9	E	1207	-	31,31,31	1.84	6 (19%)	51,51,51	2.42	19 (37%)
2	SY9	A	1206	-	31,31,31	1.75	3 (9%)	51,51,51	2.39	18 (35%)

All (21) bond length outliers are listed below:

Mol	Chain	Res	Type	Atoms	Z	Observed(Å)	Ideal(Å)
2	A	1206	SY9	OAJ-CAI	6.11	1.36	1.23
2	E	1207	SY9	OAJ-CAI	6.11	1.36	1.23
2	D	1206	SY9	OAJ-CAI	6.08	1.36	1.23
2	E	1206	SY9	OAJ-CAI	6.06	1.36	1.23
2	C	1206	SY9	OAJ-CAI	5.94	1.36	1.23
2	B	1206	SY9	OAJ-CAI	5.65	1.35	1.23
2	D	1206	SY9	CAP-CAQ	-5.40	1.39	1.50
2	B	1206	SY9	CAP-CAQ	-5.37	1.39	1.50
2	E	1207	SY9	CAP-CAQ	-5.37	1.39	1.50
2	E	1206	SY9	CAP-CAQ	-5.32	1.39	1.50
2	A	1206	SY9	CAP-CAQ	-5.25	1.39	1.50
2	C	1206	SY9	CAP-CAQ	-5.24	1.39	1.50
2	E	1207	SY9	CAQ-CAR	3.25	1.39	1.33
2	A	1206	SY9	CAQ-CAR	3.02	1.38	1.33
2	C	1206	SY9	CAQ-CAR	2.81	1.38	1.33
2	D	1206	SY9	CAQ-CAR	2.74	1.38	1.33
2	B	1206	SY9	CAQ-CAR	2.72	1.38	1.33
2	E	1206	SY9	CAQ-CAR	2.47	1.37	1.33
2	E	1207	SY9	CAL-CAI	2.33	1.54	1.51
2	E	1207	SY9	OAO-CAM	2.05	1.46	1.43
2	E	1207	SY9	CAG-CAB	2.00	1.54	1.51

All (110) bond angle outliers are listed below:

Mol	Chain	Res	Type	Atoms	Z	Observed(°)	Ideal(°)
2	D	1206	SY9	CAS-CAR-CAQ	-9.13	114.33	123.06
2	E	1207	SY9	CAS-CAR-CAQ	-8.86	114.58	123.06
2	E	1206	SY9	CAS-CAR-CAQ	-8.85	114.60	123.06
2	C	1206	SY9	CAS-CAR-CAQ	-8.82	114.62	123.06
2	A	1206	SY9	CAS-CAR-CAQ	-8.67	114.77	123.06
2	B	1206	SY9	CAS-CAR-CAQ	-8.30	115.13	123.06
2	B	1206	SY9	CAN-CAK-NAH	-8.05	99.00	106.06
2	E	1206	SY9	CAN-CAK-NAH	-7.13	99.81	106.06
2	D	1206	SY9	OAO-CAM-CAL	-6.91	96.37	104.49
2	E	1207	SY9	OAO-CAM-CAN	5.67	119.36	114.39
2	E	1207	SY9	CAN-CAK-NAH	-5.49	101.25	106.06
2	A	1206	SY9	OAO-CAM-CAL	-5.48	98.04	104.49
2	C	1206	SY9	OAO-CAM-CAN	5.26	119.00	114.39
2	D	1206	SY9	OAO-CAM-CAN	5.25	118.99	114.39
2	B	1206	SY9	CAM-CAL-CAI	-5.08	110.19	117.16
2	B	1206	SY9	CAA-NAH-CAI	4.76	131.88	125.47
2	E	1207	SY9	CAA-NAH-CAI	4.46	131.48	125.47
2	E	1206	SY9	CAM-CAL-CAI	-4.43	111.08	117.16
2	A	1206	SY9	OAO-CAM-CAN	4.40	118.25	114.39
2	C	1206	SY9	OAO-CAM-CAL	-4.38	99.35	104.49
2	D	1206	SY9	CAA-NAH-CAI	4.20	131.12	125.47
2	E	1206	SY9	OAO-CAM-CAN	4.14	118.02	114.39
2	D	1206	SY9	CAW-CAG-CAB	-4.11	104.85	112.35
2	D	1206	SY9	CAS-NAY-CAX	-3.94	106.16	112.63
2	E	1206	SY9	CAN-CAT-CAR	-3.91	110.68	114.38
2	A	1206	SY9	CAS-NAY-CAX	-3.90	106.22	112.63
2	E	1207	SY9	OAO-CAP-CAQ	3.85	119.45	111.51
2	C	1206	SY9	CAN-CAK-NAH	-3.83	102.70	106.06
2	A	1206	SY9	CAW-CAG-CAB	-3.78	105.47	112.35
2	C	1206	SY9	CAN-CAT-CAR	-3.72	110.86	114.38
2	E	1207	SY9	CAT-CAR-CAQ	3.70	127.31	122.68
2	E	1206	SY9	CAA-NAH-CAI	3.69	130.43	125.47
2	E	1206	SY9	CAA-NAH-CAK	3.58	112.48	109.27
2	C	1206	SY9	CAA-NAH-CAI	3.53	130.22	125.47
2	A	1206	SY9	CAM-CAL-CAI	-3.49	112.37	117.16
2	D	1206	SY9	OAO-CAP-CAQ	3.48	118.69	111.51
2	C	1206	SY9	OAO-CAP-CAQ	3.45	118.61	111.51
2	C	1206	SY9	CAM-CAL-CAI	-3.44	112.45	117.16
2	A	1206	SY9	CAN-CAT-CAR	-3.38	111.18	114.38
2	A	1206	SY9	OAO-CAP-CAQ	3.38	118.47	111.51
2	C	1206	SY9	CAS-NAY-CAX	-3.33	107.15	112.63
2	D	1206	SY9	CAT-CAR-CAQ	3.31	126.83	122.68
2	D	1206	SY9	CAN-CAT-CAR	-3.24	111.31	114.38

*Continued on next page...*

*Continued from previous page...*

Mol	Chain	Res	Type	Atoms	Z	Observed(°)	Ideal(°)
2	B	1206	SY9	CAN-CAT-CAR	-3.19	111.36	114.38
2	E	1207	SY9	CAA-NAH-CAK	3.12	112.07	109.27
2	C	1206	SY9	CAT-CAR-CAQ	3.11	126.57	122.68
2	D	1206	SY9	CAM-CAL-CAI	-3.08	112.94	117.16
2	E	1206	SY9	CAT-CAR-CAQ	3.06	126.51	122.68
2	A	1206	SY9	CAA-NAH-CAK	3.05	112.01	109.27
2	E	1207	SY9	CAN-CAT-CAR	-3.02	111.52	114.38
2	A	1206	SY9	CAU-CAT-CAR	-2.99	105.68	109.13
2	D	1206	SY9	CAU-CAT-CAR	-2.98	105.69	109.13
2	A	1206	SY9	CAT-CAR-CAQ	2.95	126.37	122.68
2	A	1206	SY9	OAJ-CAI-NAH	-2.88	118.66	122.52
2	B	1206	SY9	CAK-NAH-CAI	-2.87	114.87	119.26
2	C	1206	SY9	CAL-CAI-NAH	2.84	120.28	115.45
2	B	1206	SY9	CAT-CAR-CAQ	2.80	126.19	122.68
2	E	1207	SY9	CAM-CAL-CAI	-2.77	113.36	117.16
2	C	1206	SY9	CAK-CAG-CAV	2.75	116.48	113.84
2	B	1206	SY9	OAO-CAP-CAQ	2.71	117.10	111.51
2	B	1206	SY9	CAA-NAH-CAK	2.70	111.69	109.27
2	E	1207	SY9	CAL-CAM-CAN	-2.62	107.24	110.28
2	A	1206	SY9	CAL-CAI-NAH	2.61	119.89	115.45
2	B	1206	SY9	OAO-CAM-CAN	2.61	116.68	114.39
2	B	1206	SY9	CAU-CAT-CAR	-2.61	106.12	109.13
2	B	1206	SY9	CAK-CAG-CAV	2.60	116.33	113.84
2	E	1207	SY9	CAS-NAY-CAX	-2.56	108.43	112.63
2	E	1206	SY9	CAR-CAS-NAY	-2.52	108.03	112.91
2	D	1206	SY9	CAR-CAS-NAY	-2.51	108.04	112.91
2	E	1207	SY9	CAK-NAH-CAI	-2.50	115.44	119.26
2	E	1206	SY9	CAU-CAT-CAR	-2.47	106.29	109.13
2	E	1206	SY9	OAJ-CAI-NAH	-2.44	119.25	122.52
2	B	1206	SY9	CAR-CAS-NAY	-2.44	108.19	112.91
2	E	1207	SY9	CAR-CAS-NAY	-2.43	108.21	112.91
2	B	1206	SY9	CAF-CAA-CAB	-2.40	119.36	121.76
2	C	1206	SY9	CAA-NAH-CAK	2.40	111.43	109.27
2	D	1206	SY9	CAT-CAN-CAM	-2.40	115.69	118.46
2	E	1207	SY9	CAP-OAO-CAM	2.39	117.40	114.88
2	A	1206	SY9	CAP-OAO-CAM	2.37	117.38	114.88
2	C	1206	SY9	CAR-CAS-NAY	-2.35	108.35	112.91
2	C	1206	SY9	CAW-CAG-CAB	-2.35	108.07	112.35
2	E	1206	SY9	CAS-CAR-CAT	2.34	118.88	114.04
2	E	1207	SY9	OAJ-CAI-NAH	-2.34	119.39	122.52
2	D	1206	SY9	CAS-CAR-CAT	2.32	118.84	114.04
2	A	1206	SY9	CAS-CAR-CAT	2.32	118.84	114.04

*Continued on next page...*



Continued from previous page...

Mol	Chain	Res	Type	Atoms	Z	Observed(°)	Ideal(°)
2	D	1206	SY9	CAA-NAH-CAK	2.31	111.35	109.27
2	C	1206	SY9	CAU-CAT-CAR	-2.31	106.47	109.13
2	E	1207	SY9	CAW-CAG-CAB	-2.31	108.14	112.35
2	D	1206	SY9	CAP-OAO-CAM	2.31	117.31	114.88
2	C	1206	SY9	CAS-CAR-CAT	2.30	118.79	114.04
2	E	1207	SY9	CAL-CAI-NAH	2.25	119.28	115.45
2	B	1206	SY9	CAS-CAR-CAT	2.24	118.66	114.04
2	D	1206	SY9	CAN-CAK-NAH	-2.24	104.10	106.06
2	E	1206	SY9	CAK-NAH-CAI	-2.22	115.86	119.26
2	A	1206	SY9	CAA-NAH-CAI	2.22	128.45	125.47
2	C	1206	SY9	CAK-NAH-CAI	-2.20	115.90	119.26
2	B	1206	SY9	CAS-NAY-CAX	-2.18	109.05	112.63
2	C	1206	SY9	CAT-CAN-CAM	-2.18	115.94	118.46
2	B	1206	SY9	CAL-CAI-NAH	2.15	119.10	115.45
2	D	1206	SY9	CAK-NAH-CAI	-2.14	115.98	119.26
2	E	1207	SY9	CAU-CAT-CAR	-2.13	106.67	109.13
2	B	1206	SY9	OAJ-CAI-NAH	-2.13	119.67	122.52
2	E	1207	SY9	CAK-CAG-CAV	2.13	115.88	113.84
2	A	1206	SY9	CAR-CAS-NAY	-2.08	108.88	112.91
2	E	1206	SY9	OAO-CAM-CAL	-2.06	102.07	104.49
2	E	1206	SY9	CAX-CAW-CAG	-2.04	99.91	104.20
2	E	1206	SY9	CAP-OAO-CAM	2.04	117.02	114.88
2	B	1206	SY9	CAX-CAW-CAG	-2.02	99.95	104.20
2	A	1206	SY9	CAX-CAW-CAG	-2.02	99.96	104.20
2	D	1206	SY9	CAF-CAA-CAB	-2.00	119.76	121.76

There are no chirality outliers.

There are no torsion outliers.

There are no ring outliers.

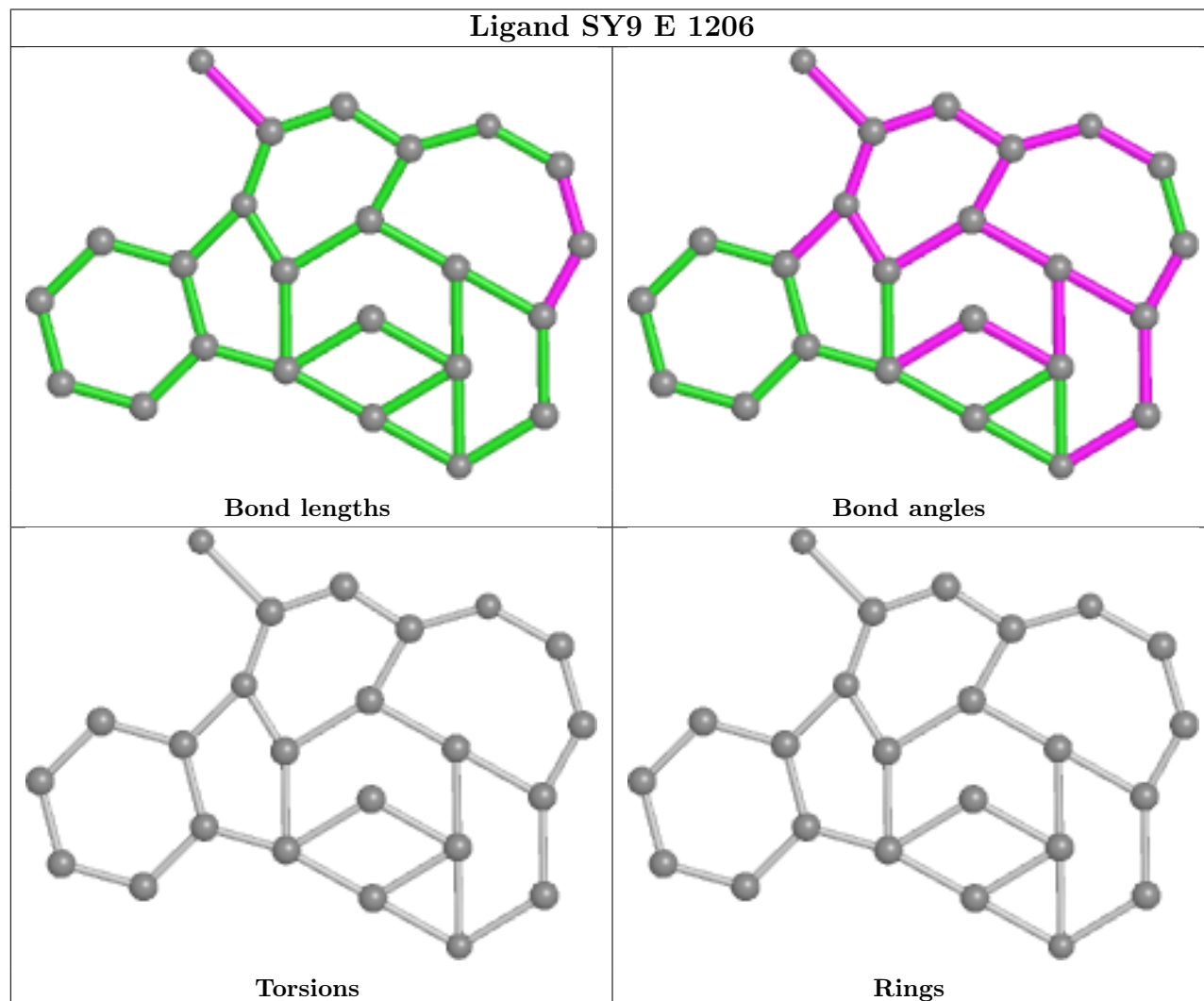
4 monomers are involved in 10 short contacts:

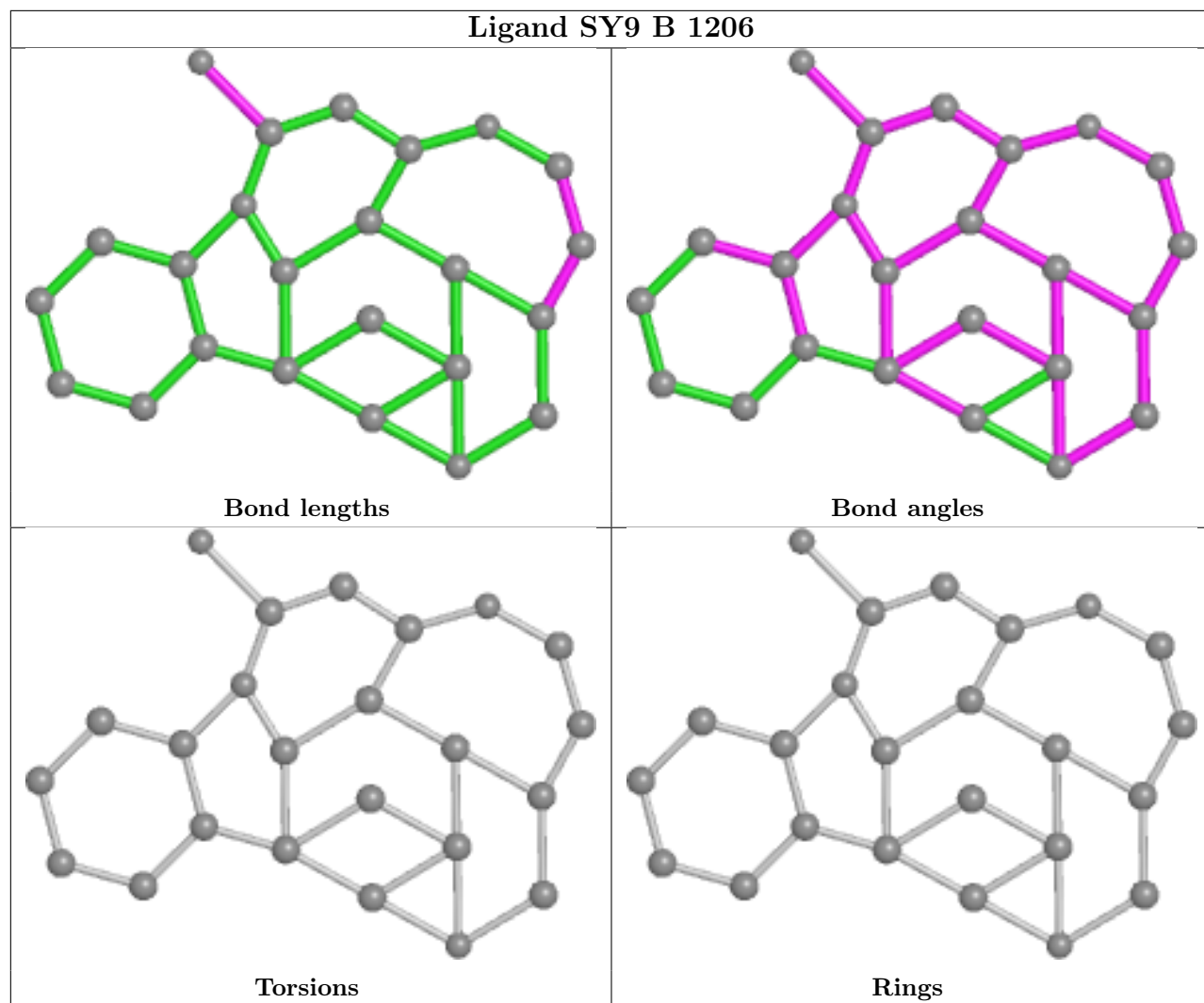
Mol	Chain	Res	Type	Clashes	Symm-Clashes
2	B	1206	SY9	1	0
2	C	1206	SY9	2	0
2	D	1206	SY9	4	0
2	A	1206	SY9	3	0

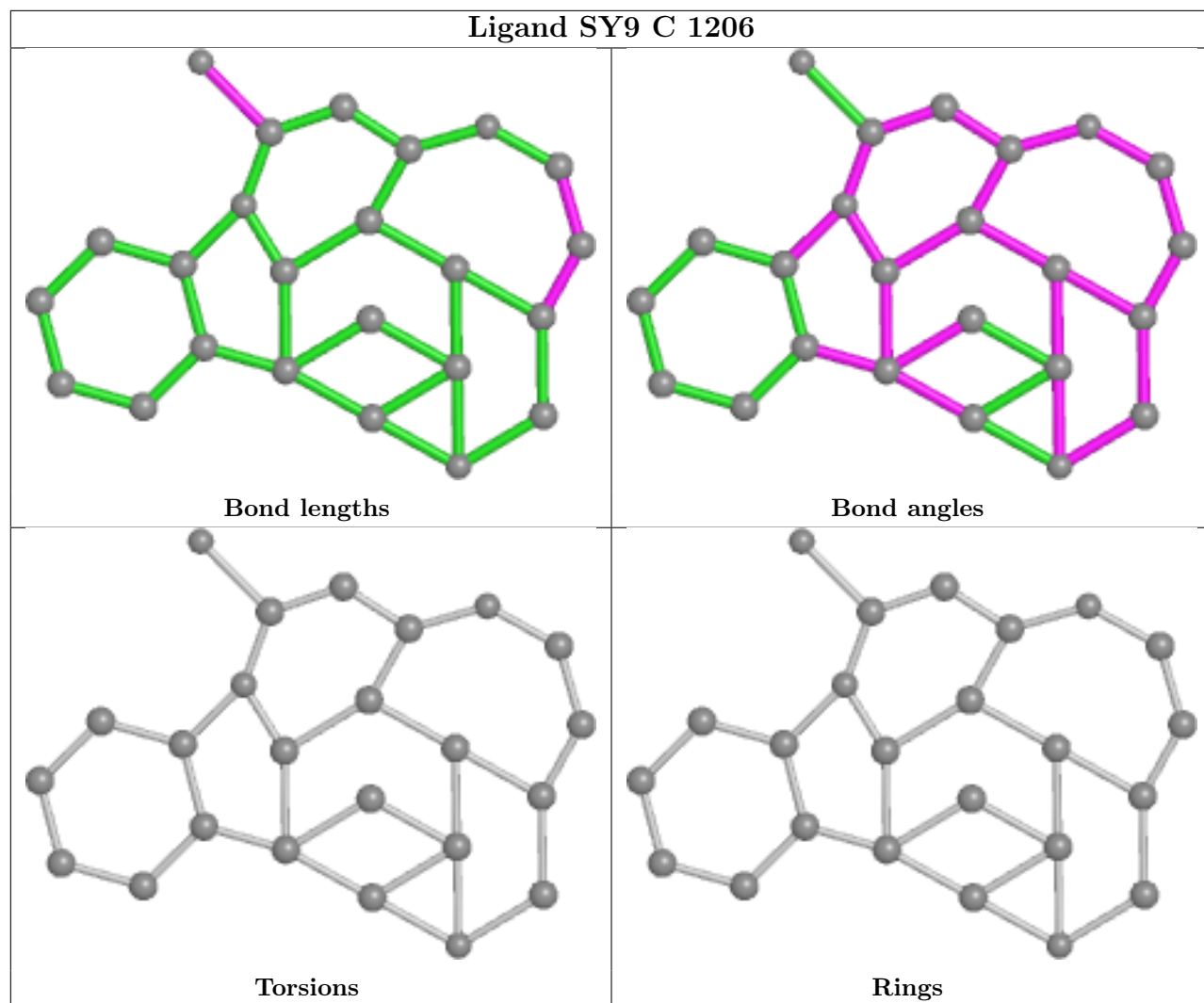
The following is a two-dimensional graphical depiction of Mogul quality analysis of bond lengths, bond angles, torsion angles, and ring geometry for all instances of the Ligand of Interest. In addition, ligands with molecular weight > 250 and outliers as shown on the validation Tables will also be included. For torsion angles, if less than 5% of the Mogul distribution of torsion angles is

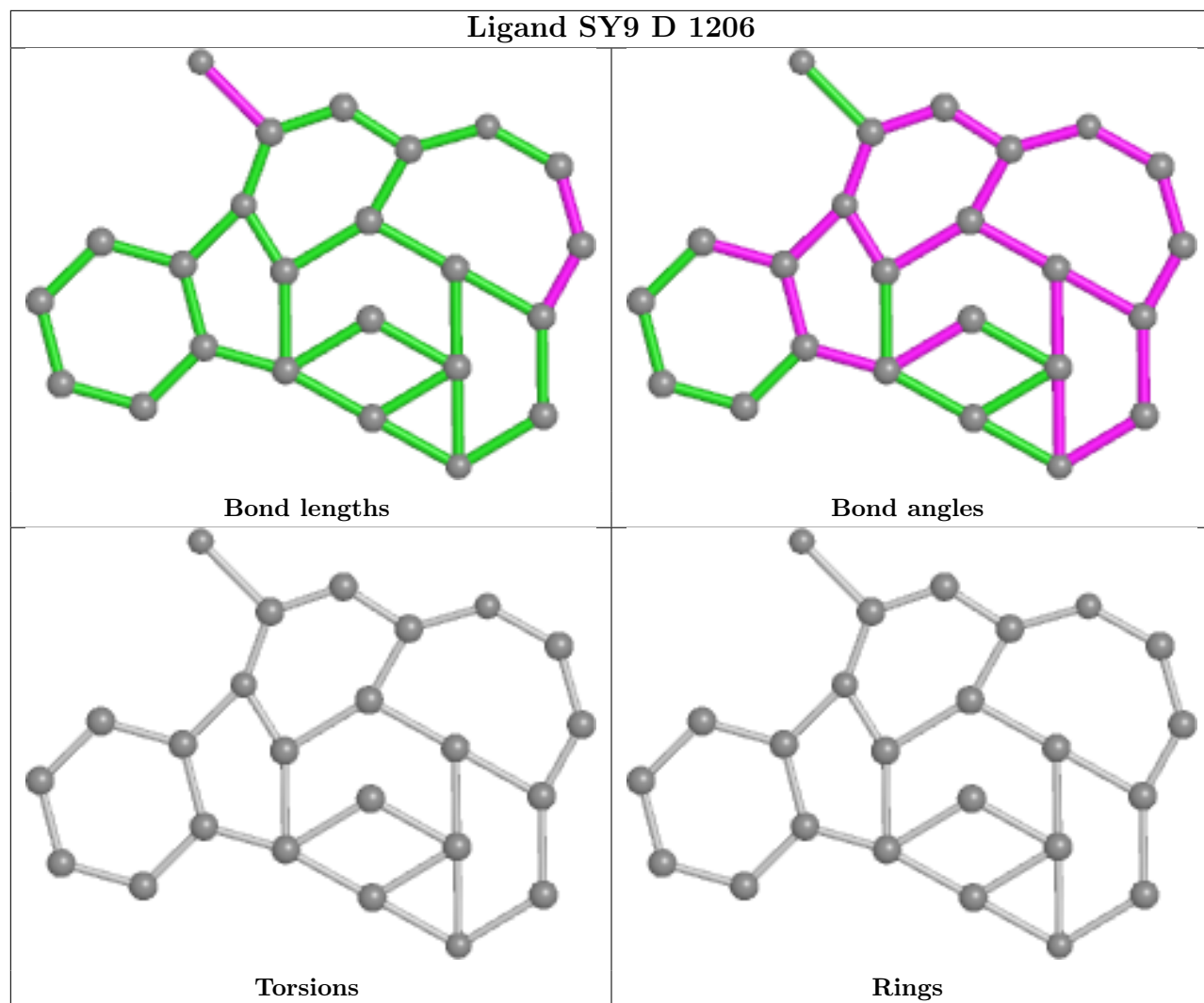


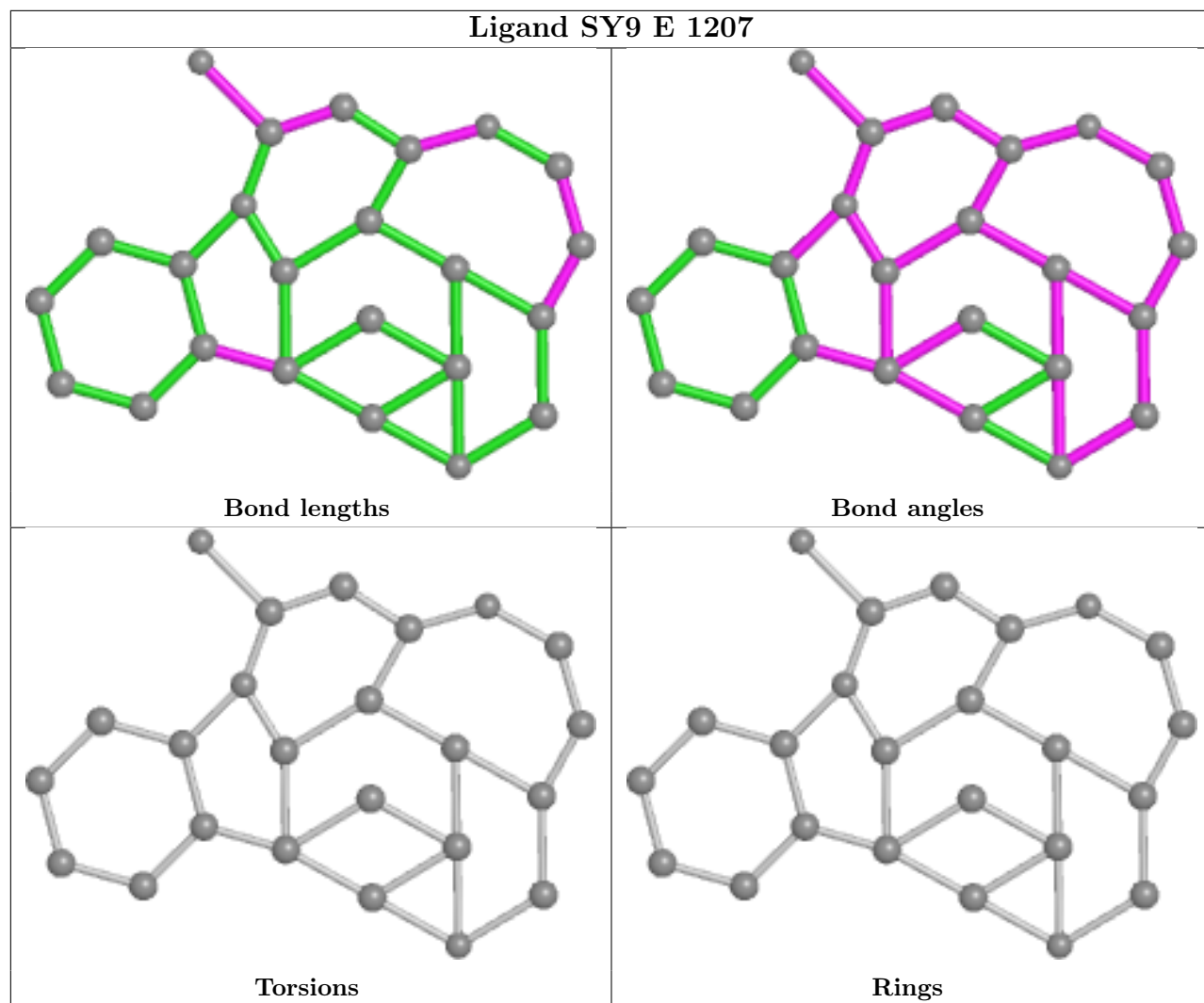
within 10 degrees of the torsion angle in question, then that torsion angle is considered an outlier. Any bond that is central to one or more torsion angles identified as an outlier by Mogul will be highlighted in the graph. For rings, the root-mean-square deviation (RMSD) between the ring in question and similar rings identified by Mogul is calculated over all ring torsion angles. If the average RMSD is greater than 60 degrees and the minimal RMSD between the ring in question and any Mogul-identified rings is also greater than 60 degrees, then that ring is considered an outlier. The outliers are highlighted in purple. The color gray indicates Mogul did not find sufficient equivalents in the CSD to analyse the geometry.

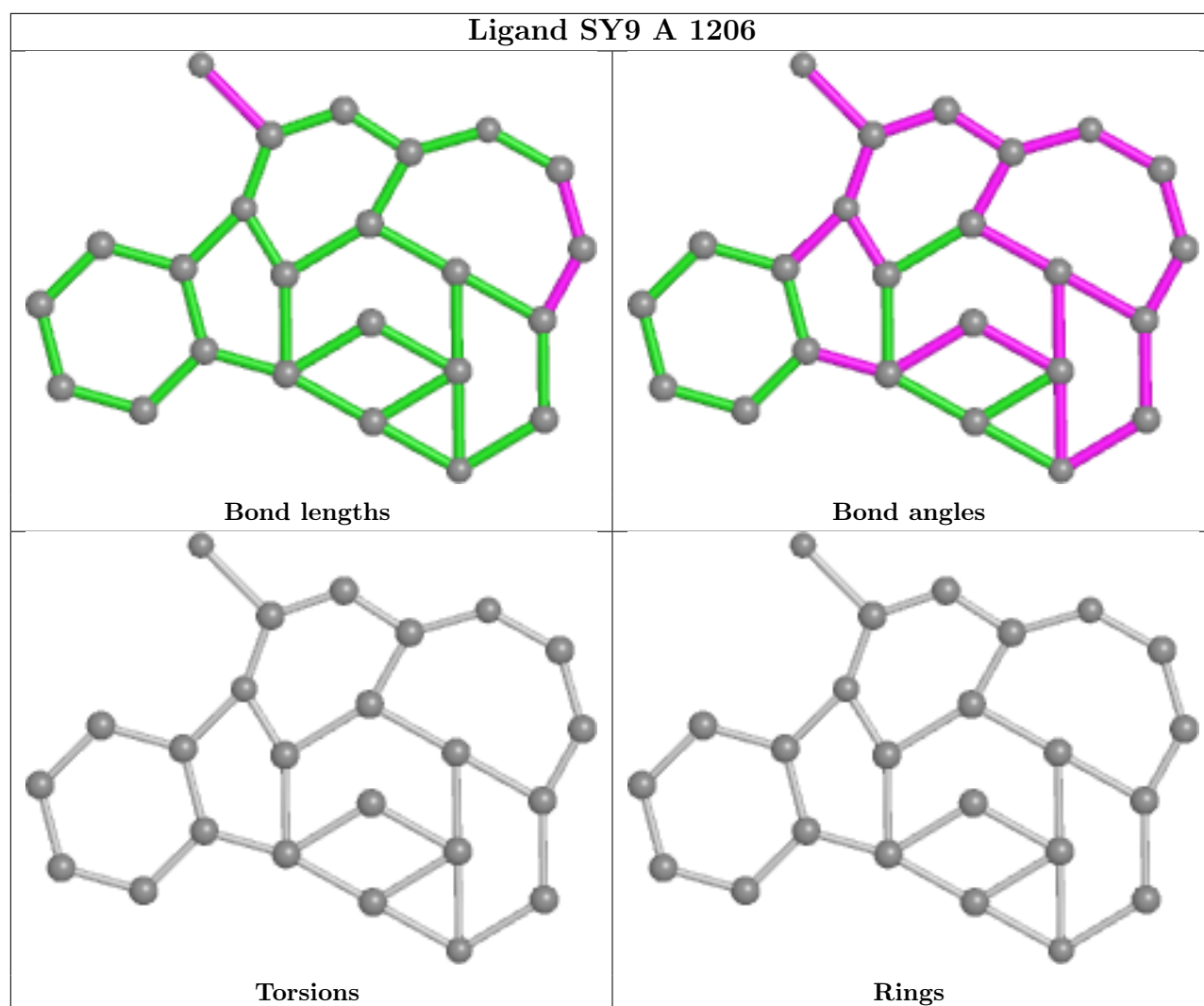












## 5.7 Other polymers [i](#)

There are no such residues in this entry.

## 5.8 Polymer linkage issues [i](#)

There are no chain breaks in this entry.

## 6 Fit of model and data

### 6.1 Protein, DNA and RNA chains

In the following table, the column labelled ‘#RSRZ > 2’ contains the number (and percentage) of RSRZ outliers, followed by percent RSRZ outliers for the chain as percentile scores relative to all X-ray entries and entries of similar resolution. The OWAB column contains the minimum, median, 95<sup>th</sup> percentile and maximum values of the occupancy-weighted average B-factor per residue. The column labelled ‘Q < 0.9’ lists the number of (and percentage) of residues with an average occupancy less than 0.9.

Mol	Chain	Analysed	<RSRZ>	#RSRZ>2	OWAB(Å <sup>2</sup> )	Q<0.9
1	A	205/217 (94%)	-0.10	6 (2%) 51 54	14, 23, 43, 72	0
1	B	205/217 (94%)	-0.06	5 (2%) 59 62	14, 22, 45, 77	0
1	C	205/217 (94%)	-0.13	5 (2%) 59 62	15, 23, 41, 78	0
1	D	205/217 (94%)	0.04	8 (3%) 39 42	14, 26, 57, 100	0
1	E	205/217 (94%)	-0.06	2 (0%) 82 84	13, 22, 41, 91	0
All	All	1025/1085 (94%)	-0.06	26 (2%) 57 60	13, 23, 50, 100	0

All (26) RSRZ outliers are listed below:

Mol	Chain	Res	Type	RSRZ
1	D	188	CYS	4.7
1	D	14	ARG	3.9
1	E	14	ARG	3.1
1	D	189	CYS	3.0
1	B	16	PRO	3.0
1	A	128	THR	2.8
1	A	14	ARG	2.8
1	D	187	SER	2.6
1	B	14	ARG	2.6
1	C	134	GLU	2.6
1	C	15	SER	2.6
1	D	150	PHE	2.5
1	C	14	ARG	2.4
1	A	132	SER	2.4
1	B	205	ARG	2.3
1	C	133	GLU	2.3
1	D	190	PRO	2.3
1	A	205	ARG	2.3
1	A	133	GLU	2.3
1	C	16	PRO	2.3

*Continued on next page...*

*Continued from previous page...*

Mol	Chain	Res	Type	RSRZ
1	D	1	GLN	2.3
1	B	15	SER	2.1
1	D	191	GLU	2.1
1	B	188	CYS	2.1
1	E	68	ASN	2.1
1	A	134	GLU	2.0

## 6.2 Non-standard residues in protein, DNA, RNA chains [i](#)

There are no non-standard protein/DNA/RNA residues in this entry.

## 6.3 Carbohydrates [i](#)

There are no monosaccharides in this entry.

## 6.4 Ligands [i](#)

In the following table, the Atoms column lists the number of modelled atoms in the group and the number defined in the chemical component dictionary. The B-factors column lists the minimum, median, 95<sup>th</sup> percentile and maximum values of B factors of atoms in the group. The column labelled 'Q<0.9' lists the number of atoms with occupancy less than 0.9.

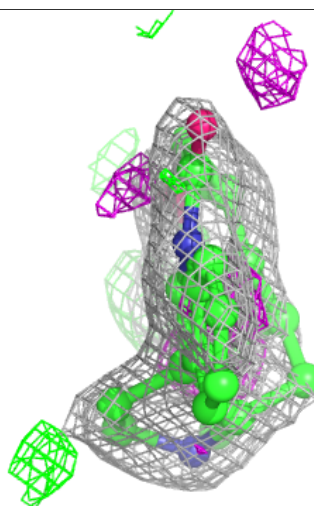
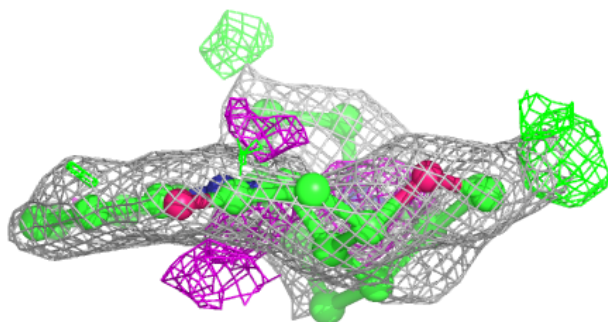
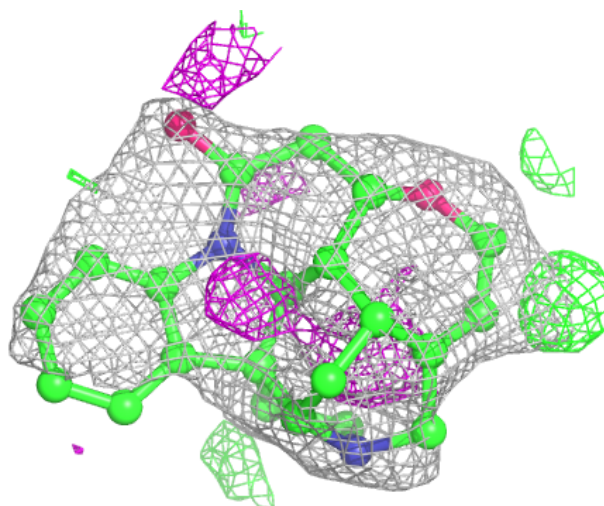
Mol	Type	Chain	Res	Atoms	RSCC	RSR	B-factors(Å <sup>2</sup> )	Q<0.9
2	SY9	E	1207	25/25	0.74	0.28	41,61,68,72	0
2	SY9	D	1206	25/25	0.86	0.17	27,37,66,70	0
2	SY9	A	1206	25/25	0.91	0.11	19,25,34,35	0
2	SY9	B	1206	25/25	0.93	0.11	15,26,46,48	0
2	SY9	E	1206	25/25	0.95	0.09	16,24,37,39	0
2	SY9	C	1206	25/25	0.95	0.11	17,22,28,30	0

The following is a graphical depiction of the model fit to experimental electron density of all instances of the Ligand of Interest. In addition, ligands with molecular weight > 250 and outliers as shown on the geometry validation Tables will also be included. Each fit is shown from different orientation to approximate a three-dimensional view.



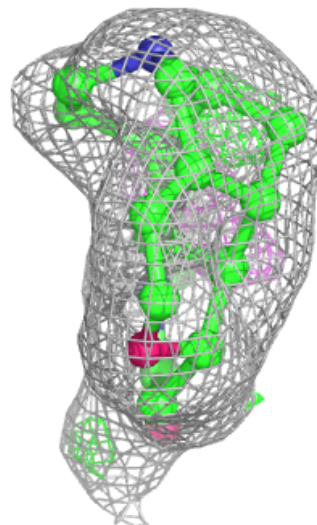
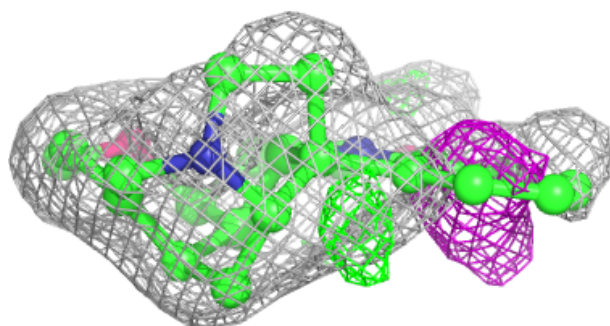
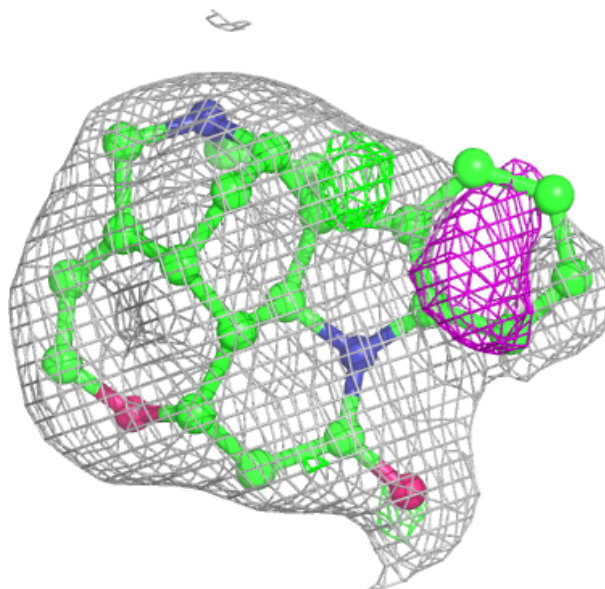
**Electron density around SY9 E 1207:**

$2mF_o-DF_c$  (at 0.7 rmsd) in gray  
 $mF_o-DF_c$  (at 3 rmsd) in purple (negative)  
and green (positive)



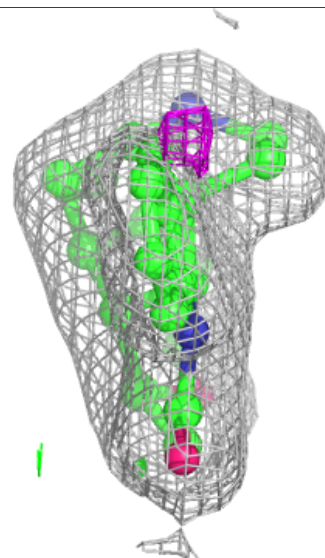
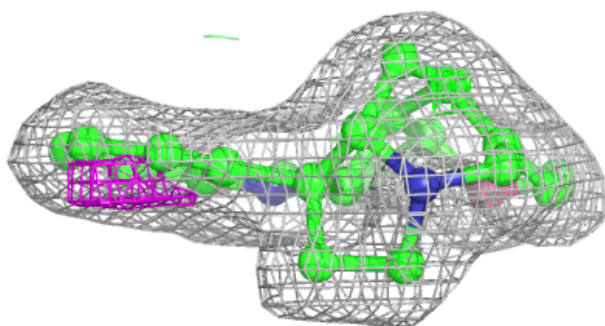
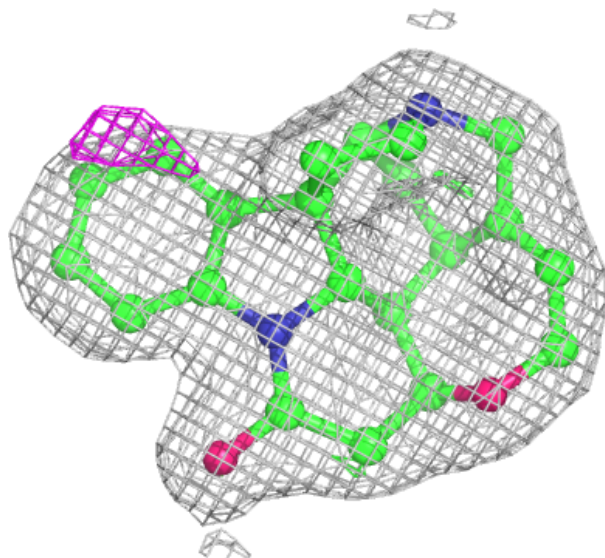
**Electron density around SY9 D 1206:**

$2mF_o-DF_c$  (at 0.7 rmsd) in gray  
 $mF_o-DF_c$  (at 3 rmsd) in purple (negative)  
and green (positive)



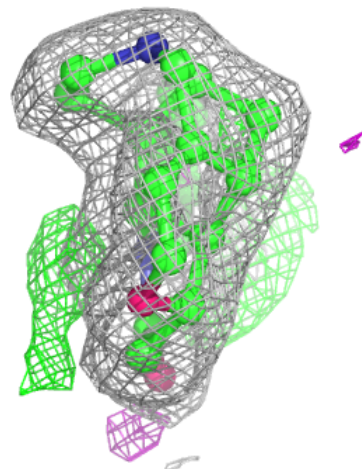
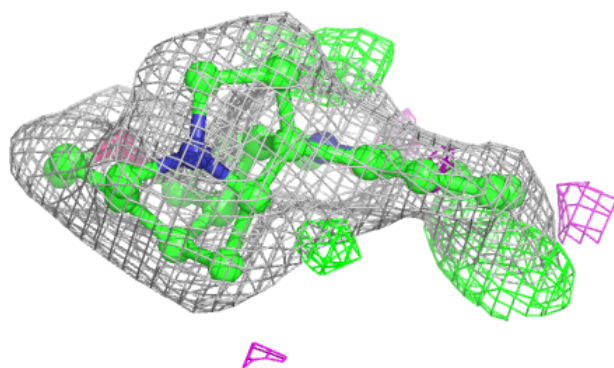
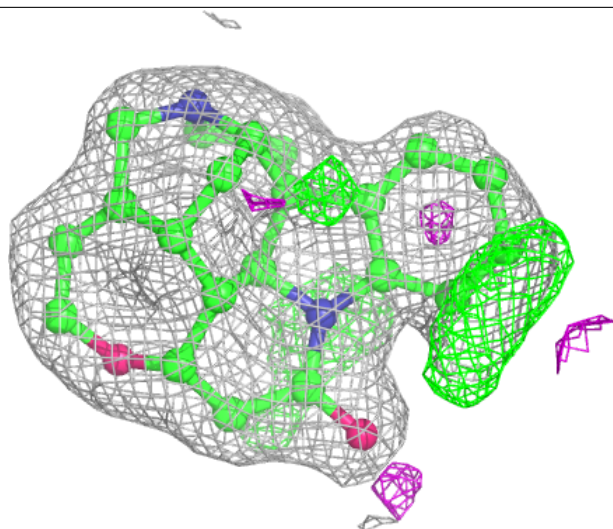
**Electron density around SY9 A 1206:**

$2mF_o-DF_c$  (at 0.7 rmsd) in gray  
 $mF_o-DF_c$  (at 3 rmsd) in purple (negative)  
and green (positive)



**Electron density around SY9 B 1206:**

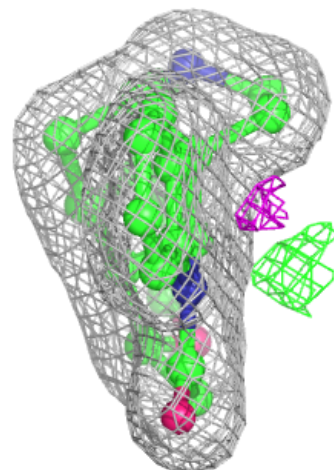
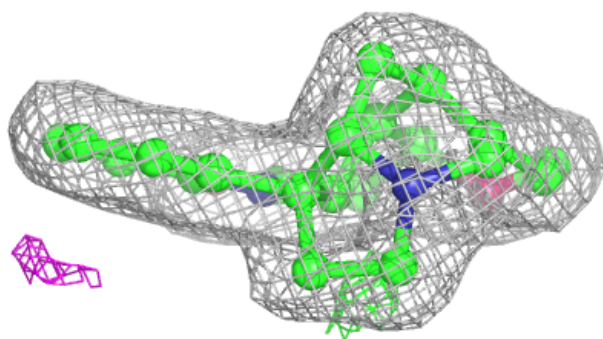
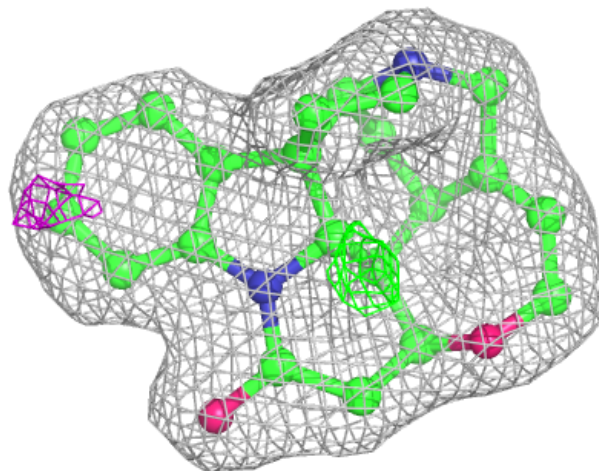
$2mF_o-DF_c$  (at 0.7 rmsd) in gray  
 $mF_o-DF_c$  (at 3 rmsd) in purple (negative)  
and green (positive)

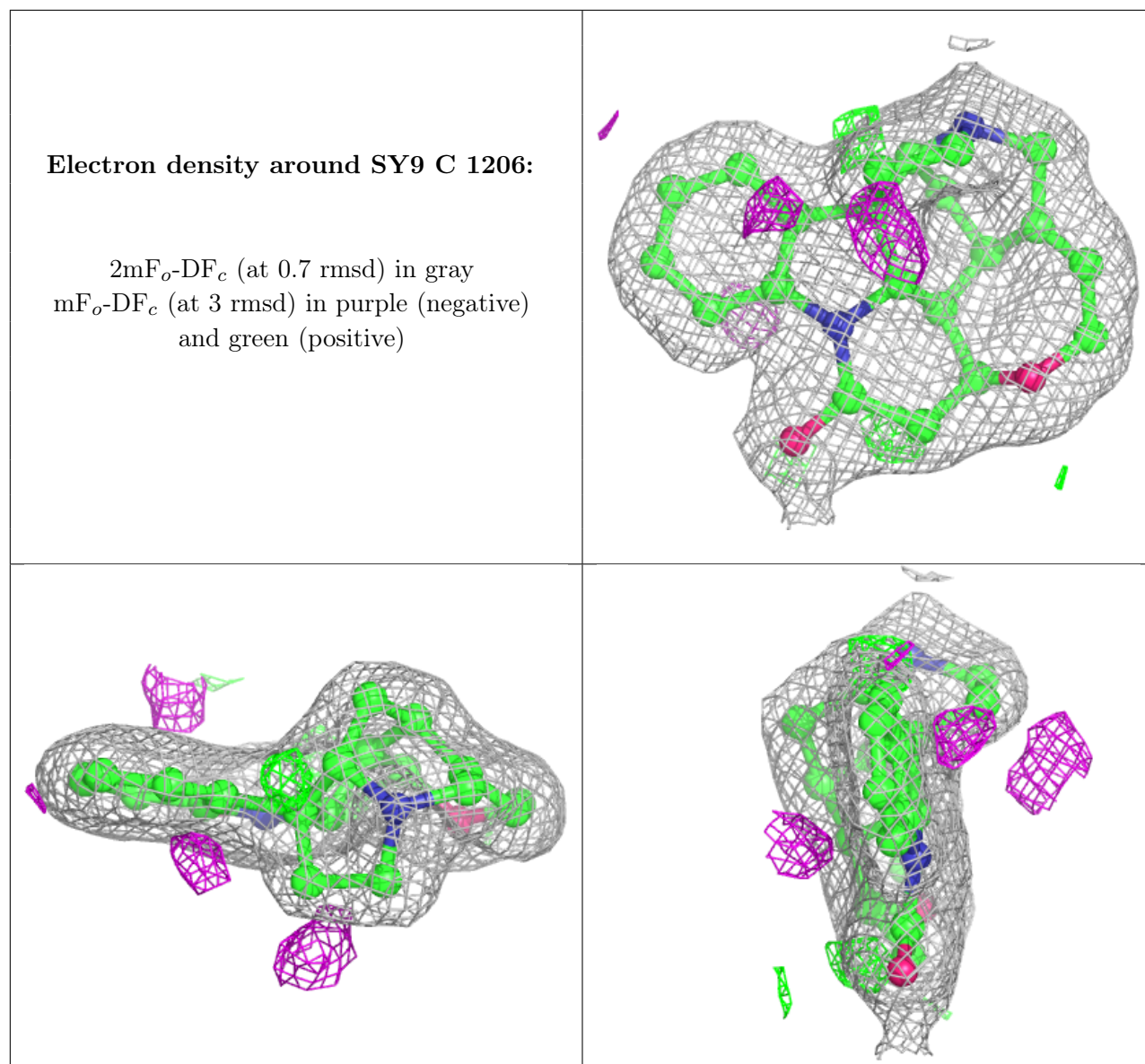




**Electron density around SY9 E 1206:**

$2mF_o-DF_c$  (at 0.7 rmsd) in gray  
 $mF_o-DF_c$  (at 3 rmsd) in purple (negative)  
and green (positive)





## 6.5 Other polymers [i](#)

There are no such residues in this entry.