



Full wwPDB X-ray Structure Validation Report ⓘ

Jun 23, 2024 – 11:25 AM EDT

PDB ID : 4XZN
Title : Crystal structure of the methylated K125R/V301L AKR1B10 Holoenzyme
Authors : Cousido-Siah, A.; Ruiz, F.X.; Mitschler, A.; Podjarny, A.
Deposited on : 2015-02-04
Resolution : 1.70 Å(reported)

This is a Full wwPDB X-ray Structure Validation Report for a publicly released PDB entry.

We welcome your comments at validation@mail.wwpdb.org

A user guide is available at

<https://www.wwpdb.org/validation/2017/XrayValidationReportHelp>

with specific help available everywhere you see the ⓘ symbol.

The types of validation reports are described at

<http://www.wwpdb.org/validation/2017/FAQs#types>.

The following versions of software and data (see [references ⓘ](#)) were used in the production of this report:

MolProbity : 4.02b-467
Mogul : 1.8.5 (274361), CSD as541be (2020)
Xtriage (Phenix) : 1.13
EDS : 2.37.1
buster-report : 1.1.7 (2018)
Percentile statistics : 20191225.v01 (using entries in the PDB archive December 25th 2019)
Refmac : 5.8.0158
CCP4 : 7.0.044 (Gargrove)
Ideal geometry (proteins) : Engh & Huber (2001)
Ideal geometry (DNA, RNA) : Parkinson et al. (1996)
Validation Pipeline (wwPDB-VP) : 2.37.1

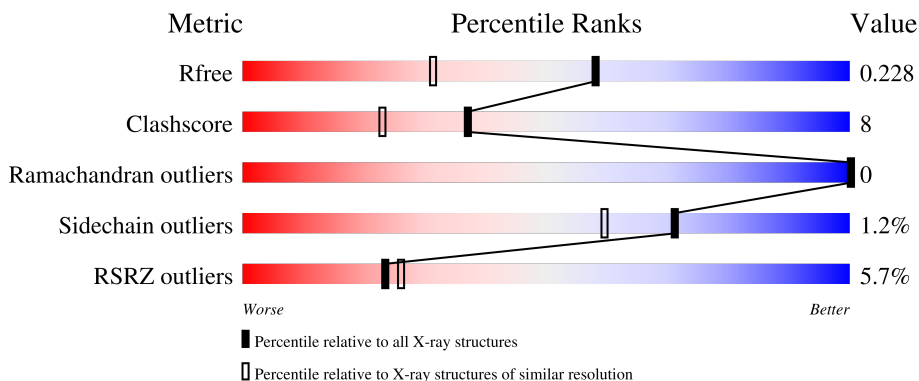
1 Overall quality at a glance

The following experimental techniques were used to determine the structure:

X-RAY DIFFRACTION

The reported resolution of this entry is 1.70 Å.

Percentile scores (ranging between 0-100) for global validation metrics of the entry are shown in the following graphic. The table shows the number of entries on which the scores are based.



Metric	Whole archive (#Entries)	Similar resolution (#Entries, resolution range(Å))
R_{free}	130704	4298 (1.70-1.70)
Clashscore	141614	4695 (1.70-1.70)
Ramachandran outliers	138981	4610 (1.70-1.70)
Sidechain outliers	138945	4610 (1.70-1.70)
RSRZ outliers	127900	4222 (1.70-1.70)

The table below summarises the geometric issues observed across the polymeric chains and their fit to the electron density. The red, orange, yellow and green segments of the lower bar indicate the fraction of residues that contain outliers for ≥ 3 , 2, 1 and 0 types of geometric quality criteria respectively. A grey segment represents the fraction of residues that are not modelled. The numeric value for each fraction is indicated below the corresponding segment, with a dot representing fractions $\leq 5\%$. The upper red bar (where present) indicates the fraction of residues that have poor fit to the electron density. The numeric value is given above the bar.

Mol	Chain	Length	Quality of chain
1	X	316	

2 Entry composition [i](#)

There are 4 unique types of molecules in this entry. The entry contains 2877 atoms, of which 12 are hydrogens and 0 are deuteriums.

In the tables below, the ZeroOcc column contains the number of atoms modelled with zero occupancy, the AltConf column contains the number of residues with at least one atom in alternate conformation and the Trace column contains the number of residues modelled with at most 2 atoms.

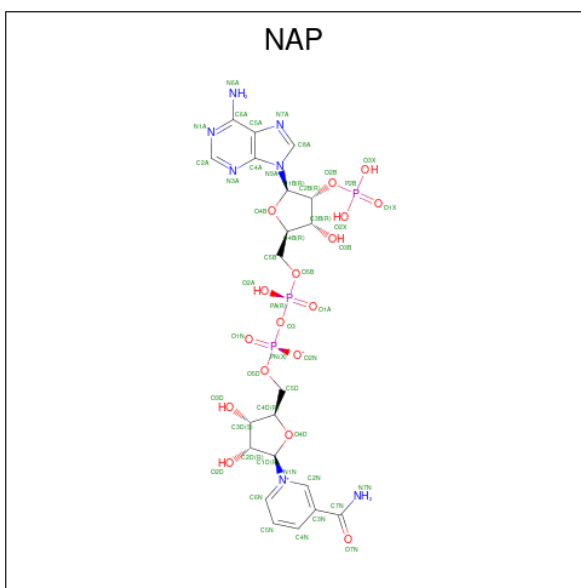
- Molecule 1 is a protein called Aldo-keto reductase family 1 member B10.

Mol	Chain	Residues	Atoms					ZeroOcc	AltConf	Trace
			Total	C	N	O	S			
1	X	316	2628	1704	437	479	8	0	9	0

There are 2 discrepancies between the modelled and reference sequences:

Chain	Residue	Modelled	Actual	Comment	Reference
X	125	ARG	LYS	engineered mutation	UNP O60218
X	301	LEU	VAL	engineered mutation	UNP O60218

- Molecule 2 is NADP NICOTINAMIDE-ADENINE-DINUCLEOTIDE PHOSPHATE (three-letter code: NAP) (formula: $C_{21}H_{28}N_7O_{17}P_3$).



Mol	Chain	Residues	Atoms					ZeroOcc	AltConf
			Total	C	N	O	P		
2	X	1	48	21	7	17	3	0	0

- Molecule 3 is 1,2-ETHANEDIOL (three-letter code: EDO) (formula: $C_2H_6O_2$).



Mol	Chain	Residues	Atoms				ZeroOcc	AltConf
			Total	C	H	O		
3	X	1	20	4	12	4	0	1

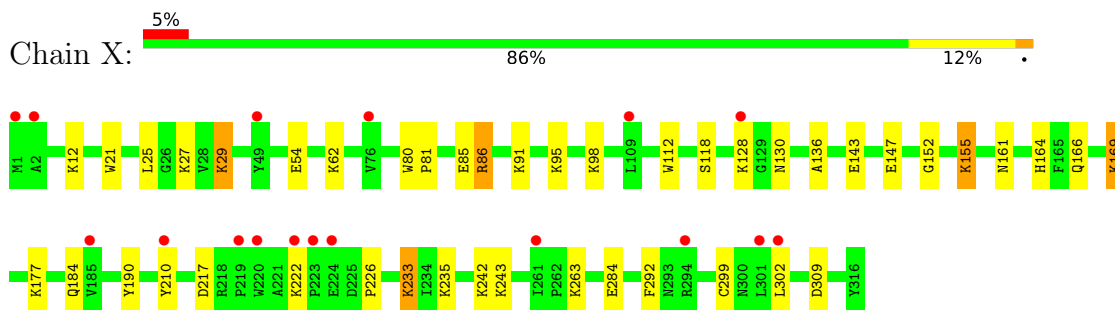
- Molecule 4 is water.

Mol	Chain	Residues	Atoms		ZeroOcc	AltConf
			Total	O		
4	X	180	181	181	0	1

3 Residue-property plots [i](#)

These plots are drawn for all protein, RNA, DNA and oligosaccharide chains in the entry. The first graphic for a chain summarises the proportions of the various outlier classes displayed in the second graphic. The second graphic shows the sequence view annotated by issues in geometry and electron density. Residues are color-coded according to the number of geometric quality criteria for which they contain at least one outlier: green = 0, yellow = 1, orange = 2 and red = 3 or more. A red dot above a residue indicates a poor fit to the electron density ($RSRZ > 2$). Stretches of 2 or more consecutive residues without any outlier are shown as a green connector. Residues present in the sample, but not in the model, are shown in grey.

- Molecule 1: Aldo-keto reductase family 1 member B10



4 Data and refinement statistics

Property	Value	Source
Space group	P 31	Depositor
Cell constants a, b, c, α , β , γ	79.91Å 79.91Å 50.62Å 90.00° 90.00° 120.00°	Depositor
Resolution (Å)	34.60 – 1.70 34.60 – 1.69	Depositor EDS
% Data completeness (in resolution range)	93.9 (34.60-1.70) 93.9 (34.60-1.69)	Depositor EDS
R_{merge}	(Not available)	Depositor
R_{sym}	0.07	Depositor
$\langle I/\sigma(I) \rangle$ ¹	4.48 (at 1.69Å)	Xtrriage
Refinement program	PHENIX (phenix.refine: 1.8_1069)	Depositor
R, R_{free}	0.196 , 0.228 0.195 , 0.228	Depositor DCC
R_{free} test set	1893 reflections (5.00%)	wwPDB-VP
Wilson B-factor (Å ²)	25.8	Xtrriage
Anisotropy	0.012	Xtrriage
Bulk solvent k_{sol} (e/Å ³), B_{sol} (Å ²)	0.38 , 52.5	EDS
L-test for twinning ²	$\langle L \rangle = 0.47$, $\langle L^2 \rangle = 0.30$	Xtrriage
Estimated twinning fraction	0.029 for -h,-k,l 0.076 for h,-h-k,-l 0.034 for -k,-h,-l	Xtrriage
F_o, F_c correlation	0.95	EDS
Total number of atoms	2877	wwPDB-VP
Average B, all atoms (Å ²)	21.0	wwPDB-VP

Xtrriage's analysis on translational NCS is as follows: *The largest off-origin peak in the Patterson function is 4.48% of the height of the origin peak. No significant pseudotranslation is detected.*

¹Intensities estimated from amplitudes.

²Theoretical values of $\langle |L| \rangle$, $\langle L^2 \rangle$ for acentric reflections are 0.5, 0.333 respectively for untwinned datasets, and 0.375, 0.2 for perfectly twinned datasets.

5 Model quality [i](#)

5.1 Standard geometry [i](#)

Bond lengths and bond angles in the following residue types are not validated in this section: NAP, MLZ, MLY, EDO

The Z score for a bond length (or angle) is the number of standard deviations the observed value is removed from the expected value. A bond length (or angle) with $|Z| > 5$ is considered an outlier worth inspection. RMSZ is the root-mean-square of all Z scores of the bond lengths (or angles).

Mol	Chain	Bond lengths		Bond angles	
		RMSZ	# Z >5	RMSZ	# Z >5
1	X	0.37	0/2510	0.54	0/3402

Chiral center outliers are detected by calculating the chiral volume of a chiral center and verifying if the center is modelled as a planar moiety or with the opposite hand. A planarity outlier is detected by checking planarity of atoms in a peptide group, atoms in a mainchain group or atoms of a sidechain that are expected to be planar.

Mol	Chain	#Chirality outliers	#Planarity outliers
1	X	0	1

There are no bond length outliers.

There are no bond angle outliers.

There are no chirality outliers.

All (1) planarity outliers are listed below:

Mol	Chain	Res	Type	Group
1	X	169	MLZ	Mainchain

5.2 Too-close contacts [i](#)

In the following table, the Non-H and H(model) columns list the number of non-hydrogen atoms and hydrogen atoms in the chain respectively. The H(added) column lists the number of hydrogen atoms added and optimized by MolProbity. The Clashes column lists the number of clashes within the asymmetric unit, whereas Symm-Clashes lists symmetry-related clashes.

Mol	Chain	Non-H	H(model)	H(added)	Clashes	Symm-Clashes
1	X	2628	0	2646	42	0
2	X	48	0	25	19	0

Continued on next page...

Continued from previous page...

Mol	Chain	Non-H	H(model)	H(added)	Clashes	Symm-Clashes
3	X	8	12	12	0	0
4	X	181	0	0	5	0
All	All	2865	12	2683	42	0

The all-atom clashscore is defined as the number of clashes found per 1000 atoms (including hydrogen atoms). The all-atom clashscore for this structure is 8.

All (42) close contacts within the same asymmetric unit are listed below, sorted by their clash magnitude.

Atom-1	Atom-2	Interatomic distance (Å)	Clash overlap (Å)
1:X:161:ASN:HD21	2:X:401:NAP:H72N	1.06	0.93
1:X:21:TRP:HB2	2:X:401:NAP:H2D	1.55	0.87
1:X:86:ARG:HH21	1:X:143:GLU:HG2	1.44	0.81
1:X:184:GLN:OE1	2:X:401:NAP:H2N	1.83	0.78
1:X:29:MLZ:HB3	1:X:54:GLU:HG2	1.64	0.78
1:X:161:ASN:ND2	2:X:401:NAP:H72N	1.83	0.76
1:X:21:TRP:CE3	2:X:401:NAP:H6N	2.24	0.72
1:X:21:TRP:CD2	2:X:401:NAP:H5N	2.27	0.70
1:X:217:ASP:HB3	4:X:669:HOH:O	1.91	0.69
1:X:21:TRP:CE2	2:X:401:NAP:H5N	2.26	0.69
1:X:299:CYS:SG	4:X:629:HOH:O	2.50	0.69
1:X:166:GLN:HE21	1:X:309:ASP:HB3	1.64	0.62
1:X:21:TRP:HB2	2:X:401:NAP:C2D	2.26	0.61
1:X:85:GLU:HG2	1:X:136:ALA:HB2	1.83	0.60
1:X:166:GLN:NE2	1:X:309:ASP:O	2.35	0.60
1:X:80:TRP:CD2	1:X:81:PRO:HD2	2.37	0.59
1:X:210:TYR:HB2	2:X:401:NAP:O4D	2.04	0.58
1:X:21:TRP:CE3	2:X:401:NAP:C6N	2.87	0.58
1:X:217:ASP:CB	4:X:669:HOH:O	2.50	0.58
1:X:86:ARG:NH1	1:X:147:GLU:OE2	2.26	0.57
1:X:21:TRP:CZ3	2:X:401:NAP:O1N	2.56	0.57
1:X:21:TRP:CD2	2:X:401:NAP:H6N	2.41	0.56
1:X:263:MLY:HB3	2:X:401:NAP:O3D	2.06	0.56
1:X:21:TRP:CD2	2:X:401:NAP:C5N	2.91	0.54
1:X:128:LYS:NZ	1:X:130:ASN:HD21	2.07	0.52
1:X:284:GLU:HG2	4:X:658:HOH:O	2.10	0.51
1:X:190:TYR:CE2	1:X:226:PRO:HB2	2.48	0.48
1:X:233:MLZ:HE2	1:X:292:PHE:CE1	2.49	0.48
1:X:21:TRP:CE3	2:X:401:NAP:O1N	2.67	0.47
1:X:21:TRP:CD2	2:X:401:NAP:C6N	2.99	0.45
1:X:128:LYS:HD3	1:X:130:ASN:OD1	2.17	0.45

Continued on next page...

Continued from previous page...

Atom-1	Atom-2	Interatomic distance (Å)	Clash overlap (Å)
1:X:302:LEU:HD12	1:X:302:LEU:H	1.83	0.44
1:X:85:GLU:HG3	1:X:118:SER:OG	2.16	0.44
1:X:263:MLY:O	2:X:401:NAP:H8A	2.18	0.44
1:X:95:MLY:HH13	1:X:95:MLY:HD3	1.71	0.44
1:X:81:PRO:HG3	1:X:112[A]:TRP:HB3	2.00	0.43
1:X:222:LYS:HA	1:X:222:LYS:HD3	1.69	0.43
1:X:91:LYS:NZ	4:X:641:HOH:O	2.51	0.43
1:X:21:TRP:CE3	2:X:401:NAP:C5N	3.02	0.43
1:X:242:MLY:HD2	1:X:242:MLY:HH23	1.73	0.42
1:X:21:TRP:CE3	2:X:401:NAP:H5N	2.56	0.40
1:X:152:GLY:O	1:X:155:MLZ:HCM3	2.22	0.40

There are no symmetry-related clashes.

5.3 Torsion angles [i](#)

5.3.1 Protein backbone [i](#)

In the following table, the Percentiles column shows the percent Ramachandran outliers of the chain as a percentile score with respect to all X-ray entries followed by that with respect to entries of similar resolution.

The Analysed column shows the number of residues for which the backbone conformation was analysed, and the total number of residues.

Mol	Chain	Analysed	Favoured	Allowed	Outliers	Percentiles
1	X	305/316 (96%)	298 (98%)	7 (2%)	0	100 100

There are no Ramachandran outliers to report.

5.3.2 Protein sidechains [i](#)

In the following table, the Percentiles column shows the percent sidechain outliers of the chain as a percentile score with respect to all X-ray entries followed by that with respect to entries of similar resolution.

The Analysed column shows the number of residues for which the sidechain conformation was analysed, and the total number of residues.

Mol	Chain	Analysed	Rotameric	Outliers	Percentiles
1	X	268/260 (103%)	265 (99%)	3 (1%)	73 63

All (3) residues with a non-rotameric sidechain are listed below:

Mol	Chain	Res	Type
1	X	25	LEU
1	X	86	ARG
1	X	164	HIS

Sometimes sidechains can be flipped to improve hydrogen bonding and reduce clashes. All (2) such sidechains are listed below:

Mol	Chain	Res	Type
1	X	130	ASN
1	X	161	ASN

5.3.3 RNA [i](#)

There are no RNA molecules in this entry.

5.4 Non-standard residues in protein, DNA, RNA chains [i](#)

17 non-standard protein/DNA/RNA residues are modelled in this entry.

In the following table, the Counts columns list the number of bonds (or angles) for which Mogul statistics could be retrieved, the number of bonds (or angles) that are observed in the model and the number of bonds (or angles) that are defined in the Chemical Component Dictionary. The Link column lists molecule types, if any, to which the group is linked. The Z score for a bond length (or angle) is the number of standard deviations the observed value is removed from the expected value. A bond length (or angle) with $|Z| > 2$ is considered an outlier worth inspection. RMSZ is the root-mean-square of all Z scores of the bond lengths (or angles).

Mol	Type	Chain	Res	Link	Bond lengths			Bond angles		
					Counts	RMSZ	$\# Z > 2$	Counts	RMSZ	$\# Z > 2$
1	MLY	X	95	1	9,10,11	0.59	0	6,11,13	0.82	0
1	MLY	X	203	1	9,10,11	0.61	0	6,11,13	0.65	0
1	MLY	X	66	1	9,10,11	0.58	0	6,11,13	0.63	0
1	MLY	X	33	1	9,10,11	0.60	0	6,11,13	0.72	0
1	MLZ	X	98	1	8,9,10	0.49	0	4,9,11	1.48	1 (25%)
1	MLZ	X	243	1	8,9,10	0.50	0	4,9,11	1.92	2 (50%)
1	MLZ	X	177	1	8,9,10	1.36	1 (12%)	4,9,11	3.15	1 (25%)
1	MLZ	X	233	1	8,9,10	0.57	0	4,9,11	1.60	1 (25%)

Mol	Type	Chain	Res	Link	Bond lengths			Bond angles		
					Counts	RMSZ	# Z > 2	Counts	RMSZ	# Z > 2
1	MLZ	X	29	1	8,9,10	0.44	0	4,9,11	1.43	1 (25%)
1	MLZ	X	169	1	8,9,10	0.67	0	4,9,11	1.47	1 (25%)
1	MLZ	X	155	1	8,9,10	0.51	0	4,9,11	1.66	1 (25%)
1	MLY	X	263	1	9,10,11	0.64	0	6,11,13	0.74	0
1	MLZ	X	62	1	8,9,10	0.50	0	4,9,11	1.22	1 (25%)
1	MLZ	X	12	1	8,9,10	0.58	0	4,9,11	1.36	1 (25%)
1	MLY	X	242	1	9,10,11	0.50	0	6,11,13	0.80	0
1	MLY	X	27	1	9,10,11	0.64	0	6,11,13	1.19	1 (16%)
1	MLY	X	235	1	9,10,11	0.86	0	6,11,13	1.36	1 (16%)

In the following table, the Chirals column lists the number of chiral outliers, the number of chiral centers analysed, the number of these observed in the model and the number defined in the Chemical Component Dictionary. Similar counts are reported in the Torsion and Rings columns. '-' means no outliers of that kind were identified.

Mol	Type	Chain	Res	Link	Chirals	Torsions	Rings
1	MLY	X	95	1	-	3/8/9/11	-
1	MLY	X	203	1	-	2/8/9/11	-
1	MLY	X	66	1	-	4/8/9/11	-
1	MLY	X	33	1	-	1/8/9/11	-
1	MLZ	X	98	1	-	3/7/8/10	-
1	MLZ	X	243	1	-	2/7/8/10	-
1	MLZ	X	177	1	-	4/7/8/10	-
1	MLZ	X	233	1	-	2/7/8/10	-
1	MLZ	X	29	1	-	1/7/8/10	-
1	MLZ	X	169	1	-	0/7/8/10	-
1	MLZ	X	155	1	-	2/7/8/10	-
1	MLY	X	263	1	-	1/8/9/11	-
1	MLZ	X	62	1	-	2/7/8/10	-
1	MLZ	X	12	1	-	2/7/8/10	-
1	MLY	X	242	1	-	1/8/9/11	-
1	MLY	X	27	1	-	1/8/9/11	-
1	MLY	X	235	1	-	3/8/9/11	-

All (1) bond length outliers are listed below:

Mol	Chain	Res	Type	Atoms	Z	Observed(Å)	Ideal(Å)
1	X	177	MLZ	CB-CA	2.99	1.57	1.53

All (12) bond angle outliers are listed below:

Mol	Chain	Res	Type	Atoms	Z	Observed(°)	Ideal(°)
1	X	177	MLZ	CM-NZ-CE	-5.89	94.95	111.95
1	X	243	MLZ	CM-NZ-CE	3.17	121.11	111.95
1	X	233	MLZ	CM-NZ-CE	3.09	120.88	111.95
1	X	155	MLZ	CM-NZ-CE	2.97	120.52	111.95
1	X	169	MLZ	CM-NZ-CE	2.78	119.98	111.95
1	X	98	MLZ	CM-NZ-CE	2.75	119.89	111.95
1	X	29	MLZ	CM-NZ-CE	2.64	119.57	111.95
1	X	12	MLZ	CM-NZ-CE	2.60	119.47	111.95
1	X	235	MLY	CD-CE-NZ	-2.20	107.83	113.79
1	X	62	MLZ	CM-NZ-CE	2.20	118.31	111.95
1	X	27	MLY	CD-CE-NZ	-2.19	107.85	113.79
1	X	243	MLZ	CD-CG-CB	-2.01	106.51	113.62

There are no chirality outliers.

All (34) torsion outliers are listed below:

Mol	Chain	Res	Type	Atoms
1	X	27	MLY	O-C-CA-CB
1	X	62	MLZ	O-C-CA-CB
1	X	66	MLY	O-C-CA-CB
1	X	155	MLZ	O-C-CA-CB
1	X	177	MLZ	N-CA-CB-CG
1	X	177	MLZ	C-CA-CB-CG
1	X	177	MLZ	O-C-CA-CB
1	X	203	MLY	O-C-CA-CB
1	X	235	MLY	O-C-CA-CB
1	X	233	MLZ	CD-CE-NZ-CM
1	X	33	MLY	CD-CE-NZ-CH1
1	X	66	MLY	CG-CD-CE-NZ
1	X	235	MLY	CD-CE-NZ-CH1
1	X	29	MLZ	CD-CE-NZ-CM
1	X	62	MLZ	CD-CE-NZ-CM
1	X	95	MLY	CA-CB-CG-CD
1	X	95	MLY	CG-CD-CE-NZ
1	X	263	MLY	CA-CB-CG-CD
1	X	242	MLY	CG-CD-CE-NZ
1	X	233	MLZ	CG-CD-CE-NZ
1	X	177	MLZ	CD-CE-NZ-CM
1	X	98	MLZ	CE-CD-CG-CB
1	X	66	MLY	CA-CB-CG-CD
1	X	155	MLZ	CD-CE-NZ-CM

Continued on next page...

Continued from previous page...

Mol	Chain	Res	Type	Atoms
1	X	235	MLY	CE-CD-CG-CB
1	X	66	MLY	C-CA-CB-CG
1	X	95	MLY	C-CA-CB-CG
1	X	98	MLZ	CD-CE-NZ-CM
1	X	203	MLY	CD-CE-NZ-CH1
1	X	12	MLZ	CG-CD-CE-NZ
1	X	243	MLZ	CD-CE-NZ-CM
1	X	243	MLZ	CA-CB-CG-CD
1	X	98	MLZ	CA-CB-CG-CD
1	X	12	MLZ	CD-CE-NZ-CM

There are no ring outliers.

6 monomers are involved in 7 short contacts:

Mol	Chain	Res	Type	Clashes	Symm-Clashes
1	X	95	MLY	1	0
1	X	233	MLZ	1	0
1	X	29	MLZ	1	0
1	X	155	MLZ	1	0
1	X	263	MLY	2	0
1	X	242	MLY	1	0

5.5 Carbohydrates [i](#)

There are no monosaccharides in this entry.

5.6 Ligand geometry [i](#)

3 ligands are modelled in this entry.

In the following table, the Counts columns list the number of bonds (or angles) for which Mogul statistics could be retrieved, the number of bonds (or angles) that are observed in the model and the number of bonds (or angles) that are defined in the Chemical Component Dictionary. The Link column lists molecule types, if any, to which the group is linked. The Z score for a bond length (or angle) is the number of standard deviations the observed value is removed from the expected value. A bond length (or angle) with $|Z| > 2$ is considered an outlier worth inspection. RMSZ is the root-mean-square of all Z scores of the bond lengths (or angles).

Mol	Type	Chain	Res	Link	Bond lengths			Bond angles		
					Counts	RMSZ	$\# Z > 2$	Counts	RMSZ	$\# Z > 2$
3	EDO	X	402[A]	-	3,3,3	0.29	0	2,2,2	0.55	0

Mol	Type	Chain	Res	Link	Bond lengths			Bond angles		
					Counts	RMSZ	# Z > 2	Counts	RMSZ	# Z > 2
2	NAP	X	401	-	45,52,52	0.94	2 (4%)	56,80,80	2.05	12 (21%)
3	EDO	X	402[B]	-	3,3,3	0.31	0	2,2,2	0.22	0

In the following table, the Chirals column lists the number of chiral outliers, the number of chiral centers analysed, the number of these observed in the model and the number defined in the Chemical Component Dictionary. Similar counts are reported in the Torsion and Rings columns. '-' means no outliers of that kind were identified.

Mol	Type	Chain	Res	Link	Chirals	Torsions	Rings
3	EDO	X	402[A]	-	-	1/1/1/1	-
2	NAP	X	401	-	-	12/31/67/67	0/5/5/5
3	EDO	X	402[B]	-	-	0/1/1/1	-

All (2) bond length outliers are listed below:

Mol	Chain	Res	Type	Atoms	Z	Observed(Å)	Ideal(Å)
2	X	401	NAP	O4D-C1D	2.82	1.45	1.41
2	X	401	NAP	C3N-C7N	-2.67	1.46	1.50

All (12) bond angle outliers are listed below:

Mol	Chain	Res	Type	Atoms	Z	Observed(°)	Ideal(°)
2	X	401	NAP	C2N-C3N-C4N	6.97	126.15	118.26
2	X	401	NAP	C5N-C4N-C3N	-6.89	112.19	120.34
2	X	401	NAP	C6N-N1N-C2N	-5.85	116.64	121.97
2	X	401	NAP	O7N-C7N-N7N	4.38	128.80	122.58
2	X	401	NAP	N3A-C2A-N1A	-3.47	123.26	128.68
2	X	401	NAP	C5N-C6N-N1N	2.81	124.43	120.40
2	X	401	NAP	O7N-C7N-C3N	-2.70	116.40	119.63
2	X	401	NAP	C4A-C5A-N7A	-2.48	106.82	109.40
2	X	401	NAP	C3N-C7N-N7N	-2.46	114.80	117.75
2	X	401	NAP	C4N-C3N-C7N	-2.24	115.06	121.04
2	X	401	NAP	O2A-PA-O1A	2.04	122.31	112.24
2	X	401	NAP	O4D-C4D-C3D	-2.01	101.14	105.11

There are no chirality outliers.

All (13) torsion outliers are listed below:

Mol	Chain	Res	Type	Atoms
2	X	401	NAP	C5D-O5D-PN-O2N
2	X	401	NAP	O4D-C1D-N1N-C2N

Continued on next page...

Continued from previous page...

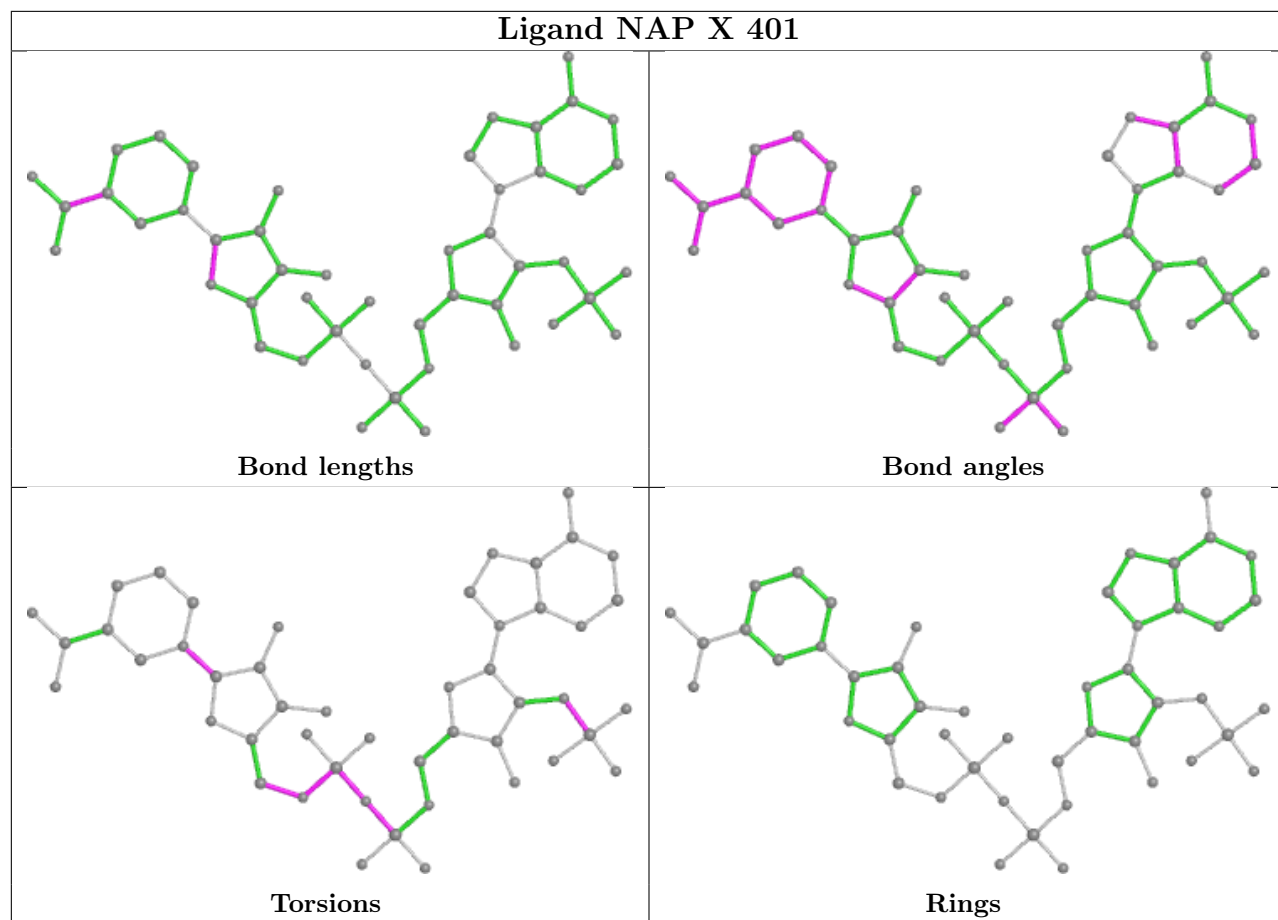
Mol	Chain	Res	Type	Atoms
2	X	401	NAP	O4D-C1D-N1N-C6N
2	X	401	NAP	C2D-C1D-N1N-C2N
2	X	401	NAP	C2D-C1D-N1N-C6N
2	X	401	NAP	C4D-C5D-O5D-PN
2	X	401	NAP	PA-O3-PN-O5D
2	X	401	NAP	C5D-O5D-PN-O3
3	X	402[A]	EDO	O1-C1-C2-O2
2	X	401	NAP	PA-O3-PN-O1N
2	X	401	NAP	C2B-O2B-P2B-O2X
2	X	401	NAP	PN-O3-PA-O1A
2	X	401	NAP	C5D-O5D-PN-O1N

There are no ring outliers.

1 monomer is involved in 19 short contacts:

Mol	Chain	Res	Type	Clashes	Symm-Clashes
2	X	401	NAP	19	0

The following is a two-dimensional graphical depiction of Mogul quality analysis of bond lengths, bond angles, torsion angles, and ring geometry for all instances of the Ligand of Interest. In addition, ligands with molecular weight > 250 and outliers as shown on the validation Tables will also be included. For torsion angles, if less than 5% of the Mogul distribution of torsion angles is within 10 degrees of the torsion angle in question, then that torsion angle is considered an outlier. Any bond that is central to one or more torsion angles identified as an outlier by Mogul will be highlighted in the graph. For rings, the root-mean-square deviation (RMSD) between the ring in question and similar rings identified by Mogul is calculated over all ring torsion angles. If the average RMSD is greater than 60 degrees and the minimal RMSD between the ring in question and any Mogul-identified rings is also greater than 60 degrees, then that ring is considered an outlier. The outliers are highlighted in purple. The color gray indicates Mogul did not find sufficient equivalents in the CSD to analyse the geometry.



5.7 Other polymers [i](#)

There are no such residues in this entry.

5.8 Polymer linkage issues [i](#)

There are no chain breaks in this entry.

6 Fit of model and data [i](#)

6.1 Protein, DNA and RNA chains [i](#)

In the following table, the column labelled ‘#RSRZ> 2’ contains the number (and percentage) of RSRZ outliers, followed by percent RSRZ outliers for the chain as percentile scores relative to all X-ray entries and entries of similar resolution. The OWAB column contains the minimum, median, 95th percentile and maximum values of the occupancy-weighted average B-factor per residue. The column labelled ‘Q< 0.9’ lists the number of (and percentage) of residues with an average occupancy less than 0.9.

Mol	Chain	Analysed	<RSRZ>	#RSRZ>2	OWAB(Å ²)	Q<0.9
1	X	299/316 (94%)	0.06	17 (5%) 23 26	9, 17, 40, 57	0

All (17) RSRZ outliers are listed below:

Mol	Chain	Res	Type	RSRZ
1	X	1	MET	5.0
1	X	301	LEU	4.2
1	X	224	GLU	3.3
1	X	128	LYS	3.0
1	X	220	TRP	2.9
1	X	219	PRO	2.8
1	X	223	PRO	2.8
1	X	109	LEU	2.8
1	X	302	LEU	2.8
1	X	76	VAL	2.6
1	X	185	VAL	2.6
1	X	294	ARG	2.5
1	X	49	TYR	2.3
1	X	2	ALA	2.3
1	X	261	ILE	2.3
1	X	222	LYS	2.3
1	X	210	TYR	2.3

6.2 Non-standard residues in protein, DNA, RNA chains [i](#)

In the following table, the Atoms column lists the number of modelled atoms in the group and the number defined in the chemical component dictionary. The B-factors column lists the minimum, median, 95th percentile and maximum values of B factors of atoms in the group. The column labelled ‘Q< 0.9’ lists the number of atoms with occupancy less than 0.9.

Mol	Type	Chain	Res	Atoms	RSCC	RSR	B-factors(Å ²)	Q<0.9
1	MLY	X	66	11/12	0.89	0.25	26,33,61,62	0
1	MLZ	X	177	10/11	0.90	0.11	14,23,34,38	0
1	MLZ	X	233	10/11	0.90	0.17	18,21,37,38	0
1	MLZ	X	169	10/11	0.91	0.16	19,26,31,36	0
1	MLY	X	235	11/12	0.92	0.13	12,14,35,39	0
1	MLY	X	27	11/12	0.93	0.11	14,22,45,45	0
1	MLY	X	242	11/12	0.94	0.07	13,20,27,38	0
1	MLZ	X	243	10/11	0.94	0.09	8,14,34,37	0
1	MLZ	X	12	10/11	0.95	0.14	13,21,56,58	0
1	MLY	X	203	11/12	0.95	0.11	14,18,32,46	0
1	MLY	X	95	11/12	0.95	0.07	11,15,23,26	0
1	MLZ	X	98	10/11	0.95	0.13	13,17,53,61	0
1	MLZ	X	155	10/11	0.95	0.09	8,20,28,44	0
1	MLZ	X	29	10/11	0.95	0.07	14,18,32,33	0
1	MLZ	X	62	10/11	0.96	0.12	16,21,28,32	0
1	MLY	X	33	11/12	0.97	0.07	13,18,34,39	0
1	MLY	X	263	11/12	0.97	0.14	9,11,13,16	0

6.3 Carbohydrates [i](#)

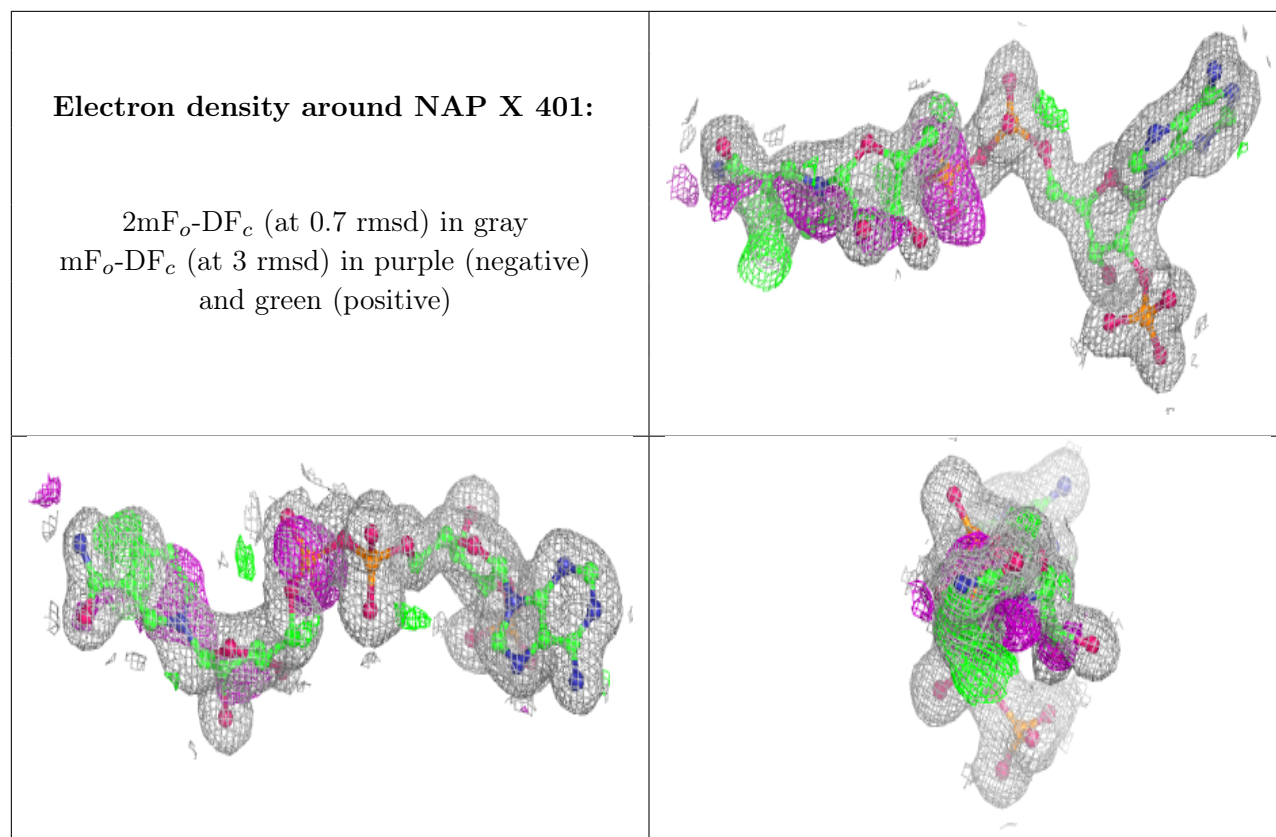
There are no monosaccharides in this entry.

6.4 Ligands [i](#)

In the following table, the Atoms column lists the number of modelled atoms in the group and the number defined in the chemical component dictionary. The B-factors column lists the minimum, median, 95th percentile and maximum values of B factors of atoms in the group. The column labelled 'Q< 0.9' lists the number of atoms with occupancy less than 0.9.

Mol	Type	Chain	Res	Atoms	RSCC	RSR	B-factors(Å ²)	Q<0.9
3	EDO	X	402[A]	4/4	0.77	0.19	10,16,21,25	10
3	EDO	X	402[B]	4/4	0.77	0.19	12,20,25,25	10
2	NAP	X	401	48/48	0.94	0.11	1,14,35,48	0

The following is a graphical depiction of the model fit to experimental electron density of all instances of the Ligand of Interest. In addition, ligands with molecular weight > 250 and outliers as shown on the geometry validation Tables will also be included. Each fit is shown from different orientation to approximate a three-dimensional view.



6.5 Other polymers [i](#)

There are no such residues in this entry.