



# Full wwPDB X-ray Structure Validation Report ⓘ

Jul 27, 2023 – 12:16 PM JST

PDB ID : 7Y0L  
Title : SulE-S209A  
Authors : Liu, B.; Ran, T.; He, J.; Wang, W.  
Deposited on : 2022-06-05  
Resolution : 1.29 Å(reported)

This is a Full wwPDB X-ray Structure Validation Report for a publicly released PDB entry.

We welcome your comments at [validation@mail.wwpdb.org](mailto:validation@mail.wwpdb.org)

A user guide is available at

<https://www.wwpdb.org/validation/2017/XrayValidationReportHelp>

with specific help available everywhere you see the ⓘ symbol.

The types of validation reports are described at

<http://www.wwpdb.org/validation/2017/FAQs#types>.

---

The following versions of software and data (see [references ⓘ](#)) were used in the production of this report:

MolProbity : 4.02b-467  
Mogul : 1.8.5 (274361), CSD as541be (2020)  
Xtriage (Phenix) : 1.13  
EDS : 2.34  
buster-report : 1.1.7 (2018)  
Percentile statistics : 20191225.v01 (using entries in the PDB archive December 25th 2019)  
Refmac : 5.8.0158  
CCP4 : 7.0.044 (Gargrove)  
Ideal geometry (proteins) : Engh & Huber (2001)  
Ideal geometry (DNA, RNA) : Parkinson et al. (1996)  
Validation Pipeline (wwPDB-VP) : 2.34

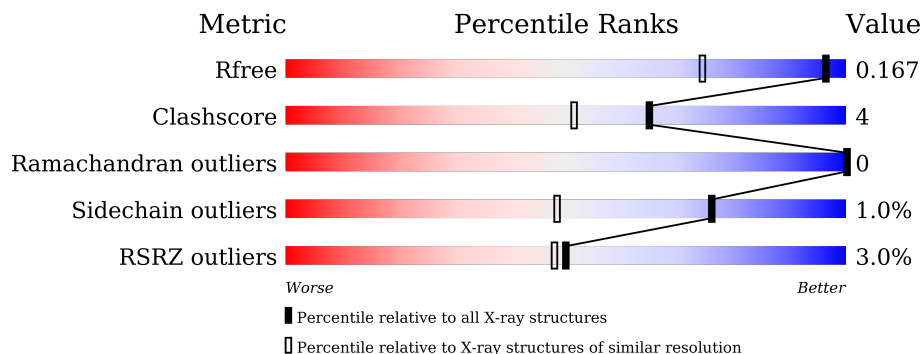
# 1 Overall quality at a glance

The following experimental techniques were used to determine the structure:

*X-RAY DIFFRACTION*

The reported resolution of this entry is 1.29 Å.

Percentile scores (ranging between 0-100) for global validation metrics of the entry are shown in the following graphic. The table shows the number of entries on which the scores are based.



Metric	Whole archive (#Entries)	Similar resolution (#Entries, resolution range(Å))
$R_{free}$	130704	1058 (1.30-1.30)
Clashscore	141614	1101 (1.30-1.30)
Ramachandran outliers	138981	1058 (1.30-1.30)
Sidechain outliers	138945	1058 (1.30-1.30)
RSRZ outliers	127900	1029 (1.30-1.30)

The table below summarises the geometric issues observed across the polymeric chains and their fit to the electron density. The red, orange, yellow and green segments of the lower bar indicate the fraction of residues that contain outliers for  $\geq 3$ , 2, 1 and 0 types of geometric quality criteria respectively. A grey segment represents the fraction of residues that are not modelled. The numeric value for each fraction is indicated below the corresponding segment, with a dot representing fractions  $\leq 5\%$ . The upper red bar (where present) indicates the fraction of residues that have poor fit to the electron density. The numeric value is given above the bar.

Mol	Chain	Length	Quality of chain
1	A	370	 3% 88% 6% • 6%
1	B	370	 3% 89% 5% 5%

## 2 Entry composition i

There are 4 unique types of molecules in this entry. The entry contains 6613 atoms, of which 0 are hydrogens and 0 are deuteriums.

In the tables below, the ZeroOcc column contains the number of atoms modelled with zero occupancy, the AltConf column contains the number of residues with at least one atom in alternate conformation and the Trace column contains the number of residues modelled with at most 2 atoms.

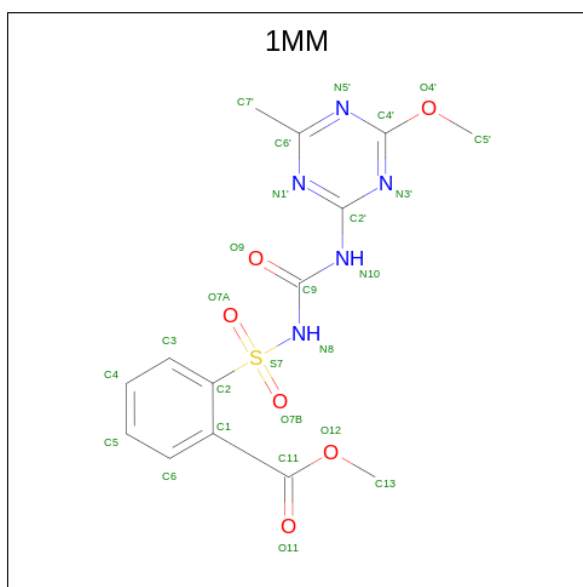
- Molecule 1 is a protein called Alpha/beta fold hydrolase.

Mol	Chain	Residues	Atoms					ZeroOcc	AltConf	Trace
			Total	C	N	O	S			
1	A	349	Total	C	N	O	S	0	6	0
			2787	1796	485	502	4			
1	B	350	Total	C	N	O	S	0	8	0
			2815	1810	492	509	4			

There are 20 discrepancies between the modelled and reference sequences:

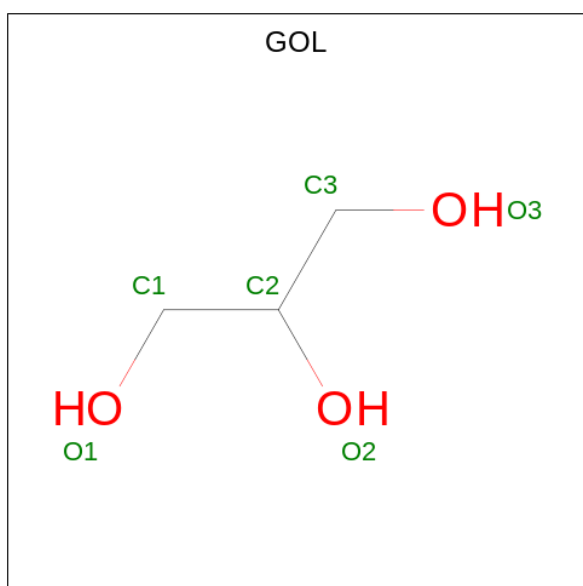
Chain	Residue	Modelled	Actual	Comment	Reference
A	1	MET	-	initiating methionine	UNP G9I933
A	209	ALA	SER	engineered mutation	UNP G9I933
A	363	LEU	-	expression tag	UNP G9I933
A	364	GLU	-	expression tag	UNP G9I933
A	365	HIS	-	expression tag	UNP G9I933
A	366	HIS	-	expression tag	UNP G9I933
A	367	HIS	-	expression tag	UNP G9I933
A	368	HIS	-	expression tag	UNP G9I933
A	369	HIS	-	expression tag	UNP G9I933
A	370	HIS	-	expression tag	UNP G9I933
B	1	MET	-	initiating methionine	UNP G9I933
B	209	ALA	SER	engineered mutation	UNP G9I933
B	363	LEU	-	expression tag	UNP G9I933
B	364	GLU	-	expression tag	UNP G9I933
B	365	HIS	-	expression tag	UNP G9I933
B	366	HIS	-	expression tag	UNP G9I933
B	367	HIS	-	expression tag	UNP G9I933
B	368	HIS	-	expression tag	UNP G9I933
B	369	HIS	-	expression tag	UNP G9I933
B	370	HIS	-	expression tag	UNP G9I933

- Molecule 2 is METHYL 2-[(4-METHOXY-6-METHYL-1,3,5-TRIAZIN-2-YL)AMINO]CARBONYL}AMINO)SULFONYL]BENZOATE (three-letter code: 1MM) (formula: C<sub>14</sub>H<sub>15</sub>N<sub>5</sub>O<sub>6</sub>S) (labeled as "Ligand of Interest" by depositor).



Mol	Chain	Residues	Atoms					ZeroOcc	AltConf
			Total	C	N	O	S		
2	A	1	26	14	5	6	1	0	0
2	B	1	26	14	5	6	1	0	0

- Molecule 3 is GLYCEROL (three-letter code: GOL) (formula:  $C_3H_8O_3$ ).



Mol	Chain	Residues	Atoms			ZeroOcc	AltConf
			Total	C	O		
3	A	1	6	3	3	0	0
3	A	1	6	3	3	0	0

*Continued on next page...*

*Continued from previous page...*

Mol	Chain	Residues	Atoms	ZeroOcc	AltConf
3	B	1	Total C O 6 3 3	0	0
3	B	1	Total C O 6 3 3	0	0
3	B	1	Total C O 6 3 3	0	0

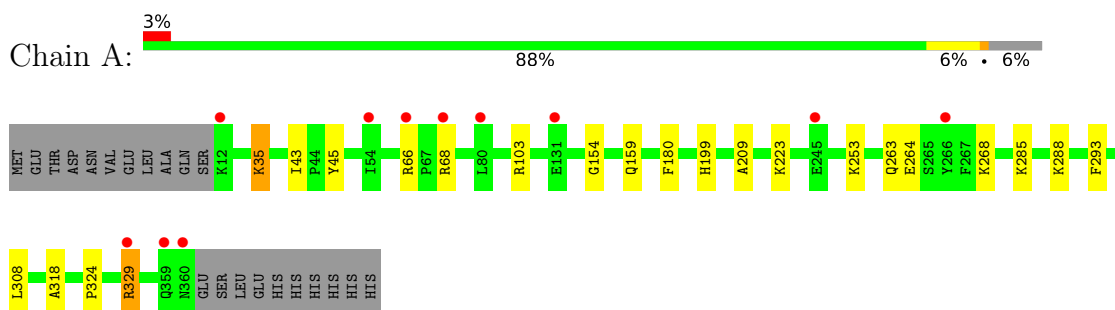
- Molecule 4 is water.

Mol	Chain	Residues	Atoms	ZeroOcc	AltConf
4	A	491	Total O 491 491	0	0
4	B	438	Total O 438 438	0	0

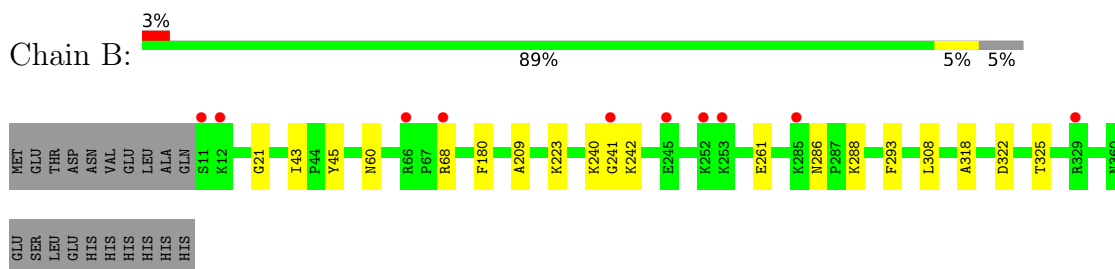
### 3 Residue-property plots [i](#)

These plots are drawn for all protein, RNA, DNA and oligosaccharide chains in the entry. The first graphic for a chain summarises the proportions of the various outlier classes displayed in the second graphic. The second graphic shows the sequence view annotated by issues in geometry and electron density. Residues are color-coded according to the number of geometric quality criteria for which they contain at least one outlier: green = 0, yellow = 1, orange = 2 and red = 3 or more. A red dot above a residue indicates a poor fit to the electron density ( $RSRZ > 2$ ). Stretches of 2 or more consecutive residues without any outlier are shown as a green connector. Residues present in the sample, but not in the model, are shown in grey.

- Molecule 1: Alpha/beta fold hydrolase



- Molecule 1: Alpha/beta fold hydrolase



## 4 Data and refinement statistics

Property	Value	Source
Space group	P 1 21 1	Depositor
Cell constants a, b, c, $\alpha$ , $\beta$ , $\gamma$	51.22Å 139.86Å 58.10Å 90.00° 101.60° 90.00°	Depositor
Resolution (Å)	36.07 – 1.29 36.07 – 1.29	Depositor EDS
% Data completeness (in resolution range)	96.5 (36.07-1.29) 96.4 (36.07-1.29)	Depositor EDS
$R_{merge}$	(Not available)	Depositor
$R_{sym}$	(Not available)	Depositor
$\langle I/\sigma(I) \rangle$ <sup>1</sup>	1.42 (at 1.29Å)	Xtrriage
Refinement program	PHENIX 1.16	Depositor
R, $R_{free}$	0.154 , 0.167 0.154 , 0.167	Depositor DCC
$R_{free}$ test set	9575 reflections (4.95%)	wwPDB-VP
Wilson B-factor (Å <sup>2</sup> )	12.3	Xtrriage
Anisotropy	0.711	Xtrriage
Bulk solvent $k_{sol}$ (e/Å <sup>3</sup> ), $B_{sol}$ (Å <sup>2</sup> )	0.36 , 40.1	EDS
L-test for twinning <sup>2</sup>	$\langle  L  \rangle = 0.49$ , $\langle L^2 \rangle = 0.33$	Xtrriage
Estimated twinning fraction	No twinning to report.	Xtrriage
$F_o, F_c$ correlation	0.97	EDS
Total number of atoms	6613	wwPDB-VP
Average B, all atoms (Å <sup>2</sup> )	18.0	wwPDB-VP

Xtrriage's analysis on translational NCS is as follows: *The largest off-origin peak in the Patterson function is 6.17% of the height of the origin peak. No significant pseudotranslation is detected.*

<sup>1</sup>Intensities estimated from amplitudes.

<sup>2</sup>Theoretical values of  $\langle |L| \rangle$ ,  $\langle L^2 \rangle$  for acentric reflections are 0.5, 0.333 respectively for untwinned datasets, and 0.375, 0.2 for perfectly twinned datasets.

## 5 Model quality

### 5.1 Standard geometry

Bond lengths and bond angles in the following residue types are not validated in this section: GOL, 1MM

The Z score for a bond length (or angle) is the number of standard deviations the observed value is removed from the expected value. A bond length (or angle) with  $|Z| > 5$  is considered an outlier worth inspection. RMSZ is the root-mean-square of all Z scores of the bond lengths (or angles).

Mol	Chain	Bond lengths		Bond angles	
		RMSZ	# Z  >5	RMSZ	# Z  >5
1	A	0.36	0/2871	0.58	0/3907
1	B	0.39	0/2902	0.59	0/3945
All	All	0.37	0/5773	0.59	0/7852

There are no bond length outliers.

There are no bond angle outliers.

There are no chirality outliers.

There are no planarity outliers.

### 5.2 Too-close contacts

In the following table, the Non-H and H(model) columns list the number of non-hydrogen atoms and hydrogen atoms in the chain respectively. The H(added) column lists the number of hydrogen atoms added and optimized by MolProbity. The Clashes column lists the number of clashes within the asymmetric unit, whereas Symm-Clashes lists symmetry-related clashes.

Mol	Chain	Non-H	H(model)	H(added)	Clashes	Symm-Clashes
1	A	2787	0	2740	24	0
1	B	2815	0	2763	19	0
2	A	26	0	15	1	0
2	B	26	0	15	2	0
3	A	12	0	16	1	0
3	B	18	0	24	3	0
4	A	491	0	0	6	0
4	B	438	0	0	5	0
All	All	6613	0	5573	46	0

The all-atom clashscore is defined as the number of clashes found per 1000 atoms (including hydrogen atoms). The all-atom clashscore for this structure is 4.



All (46) close contacts within the same asymmetric unit are listed below, sorted by their clash magnitude.

Atom-1	Atom-2	Interatomic distance (Å)	Clash overlap (Å)
1:A:223:LYS:HE3	4:A:852:HOH:O	1.46	1.12
1:B:43[A]:ILE:HD11	1:B:45:TYR:CE1	1.92	1.04
1:B:43[A]:ILE:HD11	1:B:45:TYR:CZ	2.02	0.94
1:B:43[A]:ILE:CD1	1:B:45:TYR:CE1	2.51	0.92
1:B:286:ASN:HB2	4:B:814:HOH:O	1.80	0.82
1:B:43[A]:ILE:CD1	1:B:45:TYR:CZ	2.65	0.79
1:A:43[B]:ILE:HD11	1:A:45:TYR:CE1	2.18	0.79
1:A:263:GLN:HG3	4:A:662:HOH:O	1.83	0.79
1:A:43[B]:ILE:HD11	1:A:45:TYR:CZ	2.19	0.78
3:B:404:GOL:H32	4:B:522:HOH:O	1.84	0.76
1:A:43[B]:ILE:CD1	1:A:45:TYR:CE1	2.71	0.74
1:A:43[B]:ILE:CD1	1:A:45:TYR:CZ	2.77	0.67
1:A:324:PRO:HB3	1:A:329:ARG:NH2	2.13	0.64
1:A:264:GLU:HG2	1:A:268:LYS:HE2	1.83	0.61
1:A:324:PRO:HB3	1:A:329:ARG:HH22	1.68	0.58
3:B:404:GOL:C3	4:B:522:HOH:O	2.52	0.53
1:B:68:ARG:NH2	4:B:502:HOH:O	2.38	0.53
1:A:68:ARG:HG3	4:A:508:HOH:O	2.07	0.53
1:B:43[A]:ILE:HD13	1:B:45:TYR:CD1	2.43	0.53
1:B:43[A]:ILE:CD1	1:B:45:TYR:CD1	2.93	0.52
1:B:209:ALA:HB1	2:B:401:1MM:C11	2.40	0.51
1:A:199:HIS:NE2	3:A:403:GOL:H31	2.27	0.50
1:B:240:LYS:HA	1:B:261:GLU:HB3	1.93	0.50
1:B:68:ARG:HH21	1:B:68:ARG:HG2	1.77	0.50
1:B:43[A]:ILE:HD13	1:B:45:TYR:CE1	2.44	0.50
2:B:401:1MM:N1'	2:B:401:1MM:N8	2.58	0.49
1:A:66:ARG:HB2	1:A:66:ARG:HH11	1.78	0.49
1:B:21:GLY:O	1:B:60[B]:ASN:OD1	2.31	0.48
1:A:68:ARG:HH21	1:A:103:ARG:HD3	1.78	0.48
1:B:308:LEU:HD22	1:B:318:ALA:HB1	1.94	0.48
1:B:241:GLY:O	1:B:242:LYS:HG3	2.13	0.48
1:A:285:LYS:NZ	4:A:501:HOH:O	2.23	0.46
1:A:35:LYS:HB3	1:A:35:LYS:HE2	1.72	0.46
1:A:223:LYS:N	1:A:223:LYS:HE2	2.31	0.45
1:A:253:LYS:HE2	1:A:253:LYS:HB2	1.64	0.45
1:A:209:ALA:HB1	2:A:401:1MM:C11	2.46	0.45
1:A:223:LYS:HD3	1:A:223:LYS:HA	1.70	0.44
1:A:329:ARG:NE	4:A:505:HOH:O	2.41	0.44
1:A:308:LEU:HD22	1:A:318:ALA:HB1	2.00	0.43
1:B:68:ARG:NH2	1:B:68:ARG:HG2	2.33	0.43

*Continued on next page...*

Continued from previous page...

Atom-1	Atom-2	Interatomic distance (Å)	Clash overlap (Å)
1:B:322[B]:ASP:OD1	1:B:325:THR:HG23	2.19	0.43
1:A:154:GLY:HA3	1:A:159:GLN:O	2.20	0.42
1:A:288:LYS:NZ	4:A:510:HOH:O	2.52	0.41
1:B:288:LYS:NZ	3:B:404:GOL:H2	2.35	0.41
1:A:66:ARG:HB2	1:A:66:ARG:NH1	2.35	0.41
1:B:223:LYS:HG3	4:B:798:HOH:O	2.21	0.40

There are no symmetry-related clashes.

## 5.3 Torsion angles [i](#)

### 5.3.1 Protein backbone [i](#)

In the following table, the Percentiles column shows the percent Ramachandran outliers of the chain as a percentile score with respect to all X-ray entries followed by that with respect to entries of similar resolution.

The Analysed column shows the number of residues for which the backbone conformation was analysed, and the total number of residues.

Mol	Chain	Analysed	Favoured	Allowed	Outliers	Percentiles	
1	A	353/370 (95%)	342 (97%)	11 (3%)	0	100	100
1	B	357/370 (96%)	349 (98%)	8 (2%)	0	100	100
All	All	710/740 (96%)	691 (97%)	19 (3%)	0	100	100

There are no Ramachandran outliers to report.

### 5.3.2 Protein sidechains [i](#)

In the following table, the Percentiles column shows the percent sidechain outliers of the chain as a percentile score with respect to all X-ray entries followed by that with respect to entries of similar resolution.

The Analysed column shows the number of residues for which the sidechain conformation was analysed, and the total number of residues.

Mol	Chain	Analysed	Rotameric	Outliers	Percentiles	
1	A	299/313 (96%)	295 (99%)	4 (1%)	69	35
1	B	302/313 (96%)	300 (99%)	2 (1%)	84	61

Continued on next page...

*Continued from previous page...*

Mol	Chain	Analysed	Rotameric	Outliers	Percentiles
All	All	601/626 (96%)	595 (99%)	6 (1%)	76 48

All (6) residues with a non-rotameric sidechain are listed below:

Mol	Chain	Res	Type
1	A	35	LYS
1	A	180	PHE
1	A	293	PHE
1	A	329	ARG
1	B	180	PHE
1	B	293	PHE

Sometimes sidechains can be flipped to improve hydrogen bonding and reduce clashes. There are no such sidechains identified.

### 5.3.3 RNA [i](#)

There are no RNA molecules in this entry.

## 5.4 Non-standard residues in protein, DNA, RNA chains [i](#)

There are no non-standard protein/DNA/RNA residues in this entry.

### 5.5 Carbohydrates [i](#)

There are no monosaccharides in this entry.

## 5.6 Ligand geometry [i](#)

7 ligands are modelled in this entry.

In the following table, the Counts columns list the number of bonds (or angles) for which Mogul statistics could be retrieved, the number of bonds (or angles) that are observed in the model and the number of bonds (or angles) that are defined in the Chemical Component Dictionary. The Link column lists molecule types, if any, to which the group is linked. The Z score for a bond length (or angle) is the number of standard deviations the observed value is removed from the expected value. A bond length (or angle) with  $|Z| > 2$  is considered an outlier worth inspection. RMSZ is the root-mean-square of all Z scores of the bond lengths (or angles).

Mol	Type	Chain	Res	Link	Bond lengths			Bond angles		
					Counts	RMSZ	# Z  > 2	Counts	RMSZ	# Z  > 2
3	GOL	A	403	-	5,5,5	1.02	0	5,5,5	1.01	0
3	GOL	B	403	-	5,5,5	0.10	0	5,5,5	0.29	0
2	1MM	A	401	-	27,27,27	2.74	5 (18%)	36,38,38	2.97	10 (27%)
3	GOL	A	402	-	5,5,5	0.88	0	5,5,5	0.89	0
2	1MM	B	401	-	27,27,27	2.66	5 (18%)	36,38,38	3.67	13 (36%)
3	GOL	B	404	-	5,5,5	0.10	0	5,5,5	0.47	0
3	GOL	B	402	-	5,5,5	0.86	0	5,5,5	0.86	0

In the following table, the Chirals column lists the number of chiral outliers, the number of chiral centers analysed, the number of these observed in the model and the number defined in the Chemical Component Dictionary. Similar counts are reported in the Torsion and Rings columns. '-' means no outliers of that kind were identified.

Mol	Type	Chain	Res	Link	Chirals	Torsions	Rings
3	GOL	A	403	-	-	2/4/4/4	-
3	GOL	B	403	-	-	0/4/4/4	-
2	1MM	A	401	-	-	11/23/23/23	0/2/2/2
3	GOL	A	402	-	-	0/4/4/4	-
2	1MM	B	401	-	-	10/23/23/23	0/2/2/2
3	GOL	B	404	-	-	4/4/4/4	-
3	GOL	B	402	-	-	0/4/4/4	-

All (10) bond length outliers are listed below:

Mol	Chain	Res	Type	Atoms	Z	Observed(Å)	Ideal(Å)
2	A	401	1MM	C2-S7	-11.70	1.60	1.77
2	B	401	1MM	C2-S7	-11.29	1.61	1.77
2	B	401	1MM	O12-C11	6.16	1.47	1.33
2	A	401	1MM	O12-C11	6.06	1.46	1.33
2	B	401	1MM	C2'-N10	-2.67	1.35	1.38
2	A	401	1MM	C9-N8	-2.48	1.33	1.39
2	A	401	1MM	C2'-N10	-2.40	1.35	1.38
2	A	401	1MM	S7-N8	-2.12	1.60	1.64
2	B	401	1MM	C9-N10	-2.11	1.33	1.37
2	B	401	1MM	C9-N8	-2.09	1.34	1.39

All (23) bond angle outliers are listed below:

Mol	Chain	Res	Type	Atoms	Z	Observed(°)	Ideal(°)
2	B	401	1MM	C2'-N10-C9	-14.04	115.43	130.40
2	B	401	1MM	O7B-S7-O7A	-9.18	108.26	119.55

*Continued on next page...*

Continued from previous page...

Mol	Chain	Res	Type	Atoms	Z	Observed(°)	Ideal(°)
2	A	401	1MM	C4'-N3'-C2'	9.05	120.11	112.86
2	A	401	1MM	O7B-S7-O7A	-8.32	109.33	119.55
2	B	401	1MM	C4'-N3'-C2'	8.01	119.28	112.86
2	A	401	1MM	C2'-N10-C9	-6.90	123.04	130.40
2	B	401	1MM	O7A-S7-C2	4.83	115.60	107.66
2	A	401	1MM	N3'-C2'-N1'	-4.08	119.78	126.23
2	A	401	1MM	N3'-C4'-N5'	-4.02	119.89	127.63
2	A	401	1MM	C13-O12-C11	3.81	123.19	115.83
2	B	401	1MM	N3'-C2'-N1'	-3.73	120.33	126.23
2	B	401	1MM	N3'-C4'-N5'	-3.65	120.61	127.63
2	B	401	1MM	C13-O12-C11	3.53	122.63	115.83
2	A	401	1MM	C2'-N1'-C6'	3.46	120.06	114.61
2	B	401	1MM	C2'-N1'-C6'	3.46	120.06	114.61
2	B	401	1MM	N5'-C6'-N1'	-3.34	119.57	125.72
2	A	401	1MM	C9-N8-S7	-3.26	114.30	123.62
2	A	401	1MM	N5'-C6'-N1'	-3.06	120.08	125.72
2	B	401	1MM	C3-C2-C1	-2.48	118.27	121.20
2	B	401	1MM	O12-C11-C1	2.39	116.26	112.30
2	B	401	1MM	C7'-C6'-N1'	2.30	120.74	117.15
2	B	401	1MM	O9-C9-N8	2.08	125.72	121.70
2	A	401	1MM	O7A-S7-N8	2.02	112.43	106.74

There are no chirality outliers.

All (27) torsion outliers are listed below:

Mol	Chain	Res	Type	Atoms
2	A	401	1MM	N10-C9-N8-S7
2	A	401	1MM	O9-C9-N8-S7
2	A	401	1MM	N8-C9-N10-C2'
2	A	401	1MM	O9-C9-N10-C2'
2	A	401	1MM	N5'-C4'-O4'-C5'
2	A	401	1MM	N3'-C4'-O4'-C5'
2	B	401	1MM	C1-C2-S7-N8
2	B	401	1MM	C1-C2-S7-O7B
2	B	401	1MM	N8-C9-N10-C2'
2	B	401	1MM	O9-C9-N10-C2'
2	B	401	1MM	N1'-C2'-N10-C9
2	B	401	1MM	N3'-C2'-N10-C9
3	A	403	GOL	C1-C2-C3-O3
3	B	404	GOL	O1-C1-C2-C3
2	A	401	1MM	C1-C11-O12-C13
2	B	401	1MM	C3-C2-S7-O7B

Continued on next page...

*Continued from previous page...*

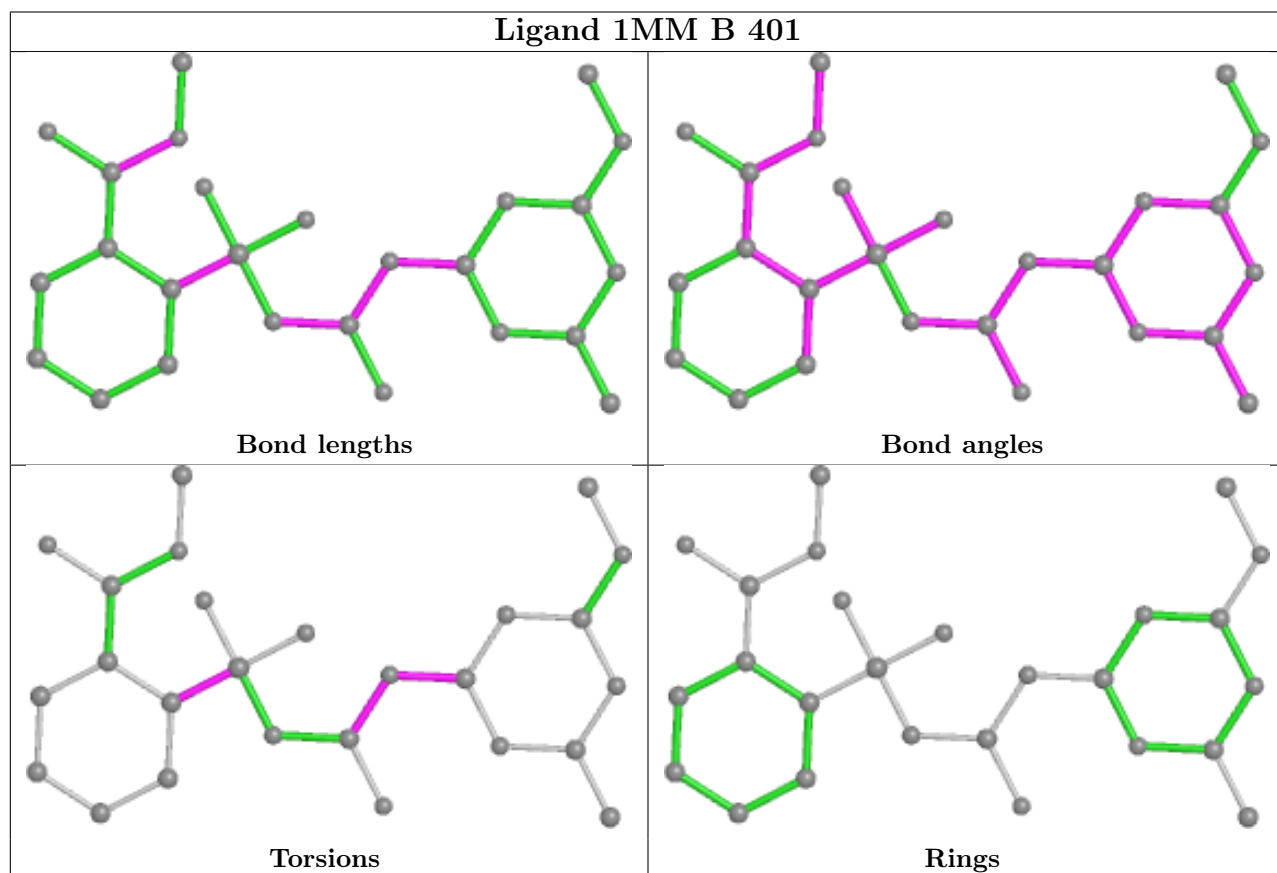
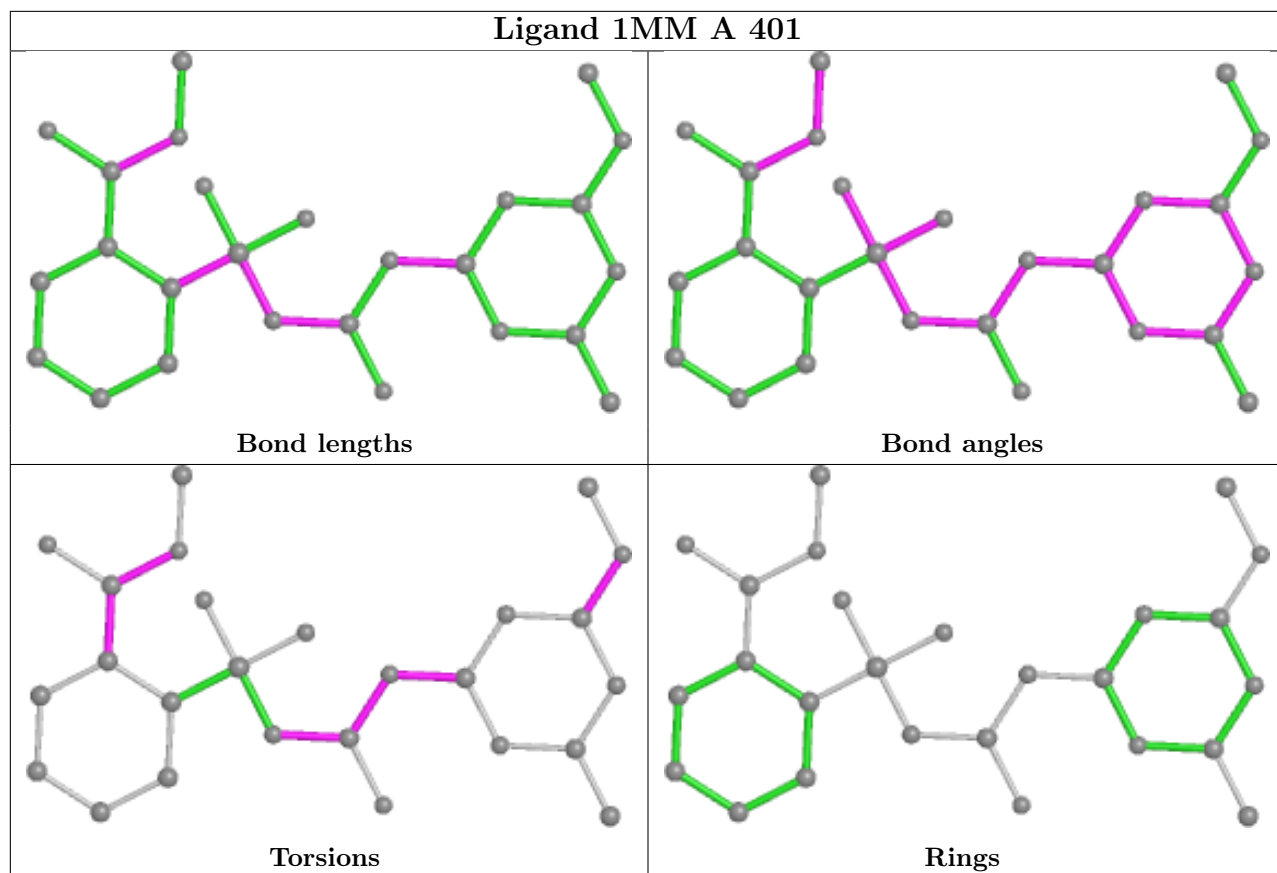
Mol	Chain	Res	Type	Atoms
2	B	401	1MM	C3-C2-S7-N8
2	A	401	1MM	O11-C11-O12-C13
2	B	401	1MM	C1-C2-S7-O7A
3	B	404	GOL	O2-C2-C3-O3
3	B	404	GOL	C1-C2-C3-O3
3	A	403	GOL	O2-C2-C3-O3
3	B	404	GOL	O1-C1-C2-O2
2	B	401	1MM	C3-C2-S7-O7A
2	A	401	1MM	N1'-C2'-N10-C9
2	A	401	1MM	N3'-C2'-N10-C9
2	A	401	1MM	C6-C1-C11-O12

There are no ring outliers.

4 monomers are involved in 7 short contacts:

Mol	Chain	Res	Type	Clashes	Symm-Clashes
3	A	403	GOL	1	0
2	A	401	1MM	1	0
2	B	401	1MM	2	0
3	B	404	GOL	3	0

The following is a two-dimensional graphical depiction of Mogul quality analysis of bond lengths, bond angles, torsion angles, and ring geometry for all instances of the Ligand of Interest. In addition, ligands with molecular weight > 250 and outliers as shown on the validation Tables will also be included. For torsion angles, if less than 5% of the Mogul distribution of torsion angles is within 10 degrees of the torsion angle in question, then that torsion angle is considered an outlier. Any bond that is central to one or more torsion angles identified as an outlier by Mogul will be highlighted in the graph. For rings, the root-mean-square deviation (RMSD) between the ring in question and similar rings identified by Mogul is calculated over all ring torsion angles. If the average RMSD is greater than 60 degrees and the minimal RMSD between the ring in question and any Mogul-identified rings is also greater than 60 degrees, then that ring is considered an outlier. The outliers are highlighted in purple. The color gray indicates Mogul did not find sufficient equivalents in the CSD to analyse the geometry.



## 5.7 Other polymers [i](#)

There are no such residues in this entry.

## 5.8 Polymer linkage issues [i](#)

There are no chain breaks in this entry.



## 6 Fit of model and data

### 6.1 Protein, DNA and RNA chains

In the following table, the column labelled ‘#RSRZ > 2’ contains the number (and percentage) of RSRZ outliers, followed by percent RSRZ outliers for the chain as percentile scores relative to all X-ray entries and entries of similar resolution. The OWAB column contains the minimum, median, 95<sup>th</sup> percentile and maximum values of the occupancy-weighted average B-factor per residue. The column labelled ‘Q < 0.9’ lists the number of (and percentage) of residues with an average occupancy less than 0.9.

Mol	Chain	Analysed	<RSRZ>	#RSRZ>2	OWAB(Å <sup>2</sup> )	Q<0.9
1	A	349/370 (94%)	0.17	11 (3%) 47 45	10, 14, 26, 38	0
1	B	350/370 (94%)	0.20	10 (2%) 51 49	10, 15, 28, 38	0
All	All	699/740 (94%)	0.19	21 (3%) 50 48	10, 15, 27, 38	0

All (21) RSRZ outliers are listed below:

Mol	Chain	Res	Type	RSRZ
1	B	11	SER	8.3
1	B	241	GLY	4.4
1	B	252	LYS	4.3
1	B	253	LYS	3.6
1	A	360	ASN	3.5
1	A	266	TYR	3.3
1	A	66	ARG	3.3
1	B	68	ARG	3.2
1	A	12	LYS	2.8
1	A	131	GLU	2.7
1	B	245	GLU	2.6
1	B	285	LYS	2.6
1	A	359	GLN	2.4
1	A	80	LEU	2.3
1	B	329	ARG	2.3
1	A	68	ARG	2.2
1	B	66	ARG	2.1
1	A	329	ARG	2.1
1	A	54	ILE	2.1
1	B	12[A]	LYS	2.0
1	A	245	GLU	2.0

## 6.2 Non-standard residues in protein, DNA, RNA chains [i](#)

There are no non-standard protein/DNA/RNA residues in this entry.

## 6.3 Carbohydrates [i](#)

There are no monosaccharides in this entry.

## 6.4 Ligands [i](#)

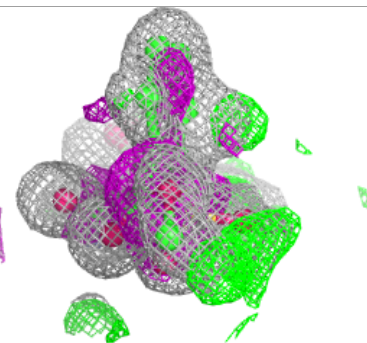
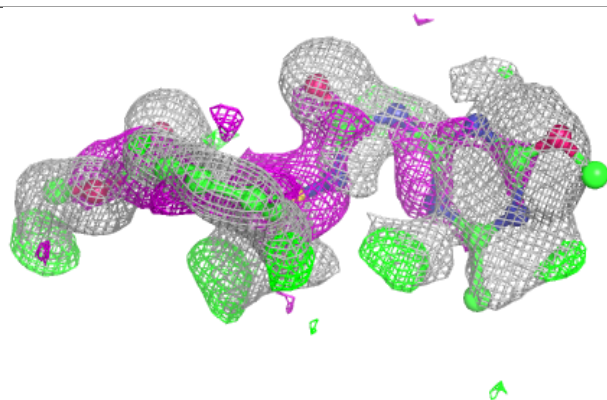
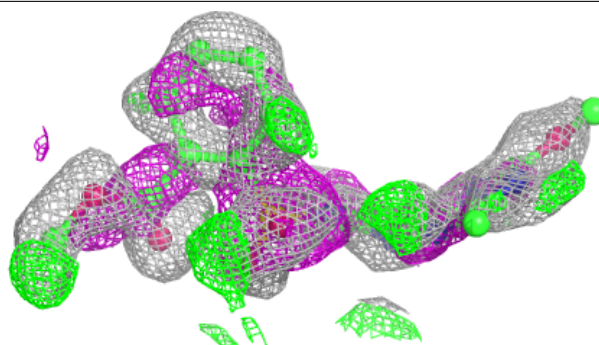
In the following table, the Atoms column lists the number of modelled atoms in the group and the number defined in the chemical component dictionary. The B-factors column lists the minimum, median, 95<sup>th</sup> percentile and maximum values of B factors of atoms in the group. The column labelled 'Q< 0.9' lists the number of atoms with occupancy less than 0.9.

Mol	Type	Chain	Res	Atoms	RSCC	RSR	B-factors(Å <sup>2</sup> )	Q<0.9
2	1MM	B	401	26/26	0.63	0.31	17,34,43,49	0
2	1MM	A	401	26/26	0.66	0.33	18,36,41,44	0
3	GOL	B	404	6/6	0.66	0.36	20,20,20,20	0
3	GOL	B	403	6/6	0.84	0.16	20,20,20,20	0
3	GOL	A	403	6/6	0.90	0.14	24,33,38,39	0
3	GOL	A	402	6/6	0.94	0.08	13,16,17,17	0
3	GOL	B	402	6/6	0.94	0.08	13,16,18,18	0

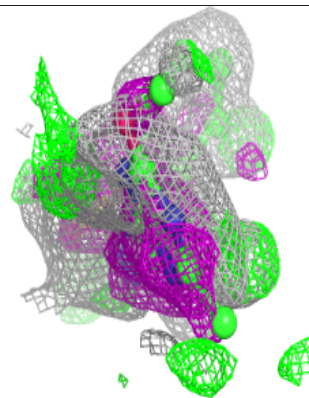
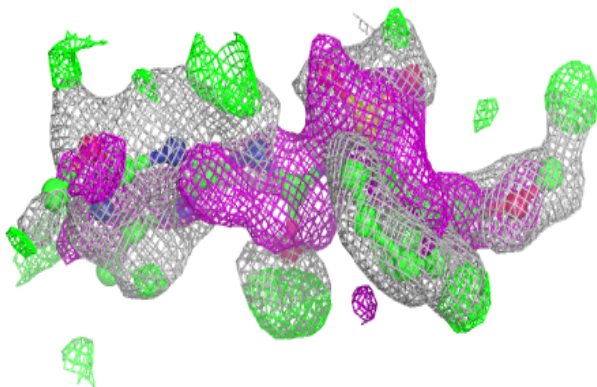
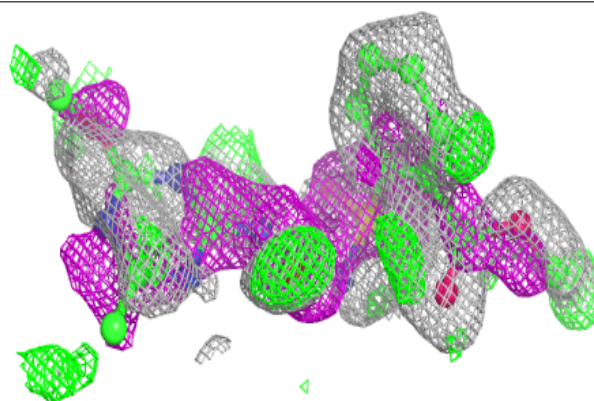
The following is a graphical depiction of the model fit to experimental electron density of all instances of the Ligand of Interest. In addition, ligands with molecular weight > 250 and outliers as shown on the geometry validation Tables will also be included. Each fit is shown from different orientation to approximate a three-dimensional view.

**Electron density around 1MM B 401:**

$2mF_o-DF_c$  (at 0.7 rnsd) in gray  
 $mF_o-DF_c$  (at 3 rnsd) in purple (negative)  
and green (positive)

**Electron density around 1MM A 401:**

$2mF_o-DF_c$  (at 0.7 rnsd) in gray  
 $mF_o-DF_c$  (at 3 rnsd) in purple (negative)  
and green (positive)



## 6.5 Other polymers [i](#)

There are no such residues in this entry.