



# Full wwPDB X-ray Structure Validation Report ⓘ

Dec 17, 2023 – 09:25 am GMT

PDB ID : 2Y31  
Title : Simocyclinone C4 bound form of TetR-like repressor SimR  
Authors : Le, T.B.K.; Stevenson, C.E.M.; Fiedler, H.-P.; Maxwell, A.; Lawson, D.M.;  
Buttner, M.J.  
Deposited on : 2010-12-17  
Resolution : 2.30 Å(reported)

This is a Full wwPDB X-ray Structure Validation Report for a publicly released PDB entry.

We welcome your comments at [validation@mail.wwpdb.org](mailto:validation@mail.wwpdb.org)

A user guide is available at

<https://www.wwpdb.org/validation/2017/XrayValidationReportHelp>

with specific help available everywhere you see the ⓘ symbol.

The types of validation reports are described at

<http://www.wwpdb.org/validation/2017/FAQs#types>.

---

The following versions of software and data (see [references ⓘ](#)) were used in the production of this report:

MolProbity : 4.02b-467  
Mogul : 1.8.4, CSD as541be (2020)  
Xtriage (Phenix) : 1.13  
EDS : 2.36  
buster-report : 1.1.7 (2018)  
Percentile statistics : 20191225.v01 (using entries in the PDB archive December 25th 2019)  
Refmac : 5.8.0158  
CCP4 : 7.0.044 (Gargrove)  
Ideal geometry (proteins) : Engh & Huber (2001)  
Ideal geometry (DNA, RNA) : Parkinson et al. (1996)  
Validation Pipeline (wwPDB-VP) : 2.36

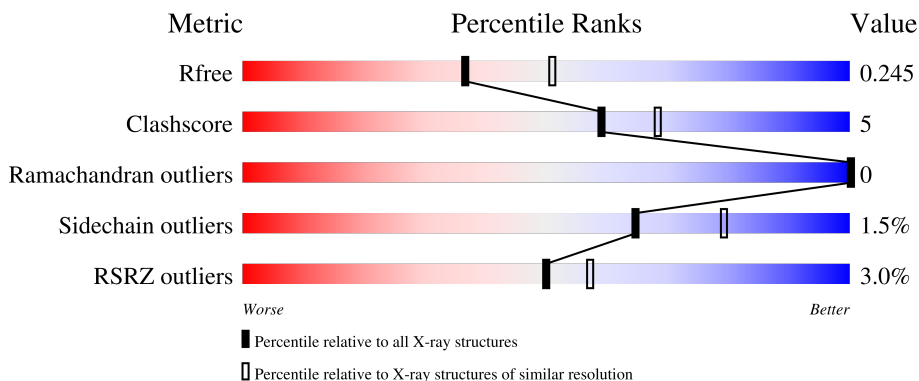
# 1 Overall quality at a glance

The following experimental techniques were used to determine the structure:

*X-RAY DIFFRACTION*

The reported resolution of this entry is 2.30 Å.

Percentile scores (ranging between 0-100) for global validation metrics of the entry are shown in the following graphic. The table shows the number of entries on which the scores are based.



Metric	Whole archive (#Entries)	Similar resolution (#Entries, resolution range(Å))
$R_{free}$	130704	5042 (2.30-2.30)
Clashscore	141614	5643 (2.30-2.30)
Ramachandran outliers	138981	5575 (2.30-2.30)
Sidechain outliers	138945	5575 (2.30-2.30)
RSRZ outliers	127900	4938 (2.30-2.30)

The table below summarises the geometric issues observed across the polymeric chains and their fit to the electron density. The red, orange, yellow and green segments of the lower bar indicate the fraction of residues that contain outliers for  $\geq 3$ , 2, 1 and 0 types of geometric quality criteria respectively. A grey segment represents the fraction of residues that are not modelled. The numeric value for each fraction is indicated below the corresponding segment, with a dot representing fractions  $\leq 5\%$ . The upper red bar (where present) indicates the fraction of residues that have poor fit to the electron density. The numeric value is given above the bar.

Mol	Chain	Length	Quality of chain
1	A	267	 83% 7% 9%
1	B	267	 78% 8% 13%

The following table lists non-polymeric compounds, carbohydrate monomers and non-standard residues in protein, DNA, RNA chains that are outliers for geometric or electron-density-fit criteria:

Mol	Type	Chain	Res	Chirality	Geometry	Clashes	Electron density
4	PG4	A	1249	-	-	X	-

## 2 Entry composition i

There are 7 unique types of molecules in this entry. The entry contains 4226 atoms, of which 0 are hydrogens and 0 are deuteriums.

In the tables below, the ZeroOcc column contains the number of atoms modelled with zero occupancy, the AltConf column contains the number of residues with at least one atom in alternate conformation and the Trace column contains the number of residues modelled with at most 2 atoms.

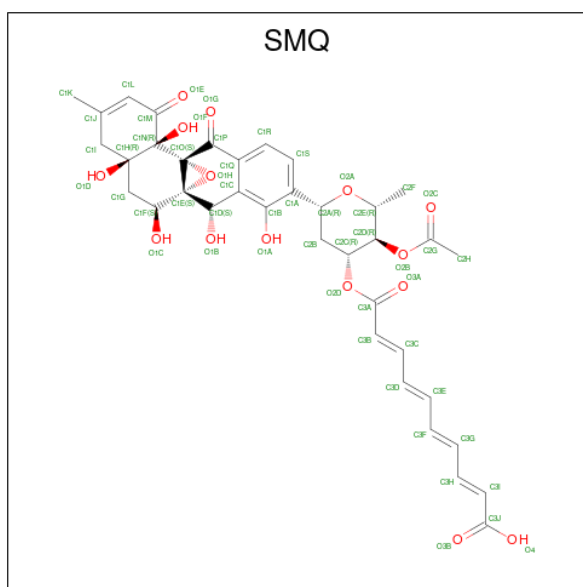
- Molecule 1 is a protein called PUTATIVE REPRESSOR SIMREG2.

Mol	Chain	Residues	Atoms					ZeroOcc	AltConf	Trace
			Total	C	N	O	S			
1	A	242	Total	C	N	O	S	0	4	0
			1940	1228	351	353	8			
1	B	232	Total	C	N	O	S	0	4	0
			1870	1186	332	344	8			

There are 16 discrepancies between the modelled and reference sequences:

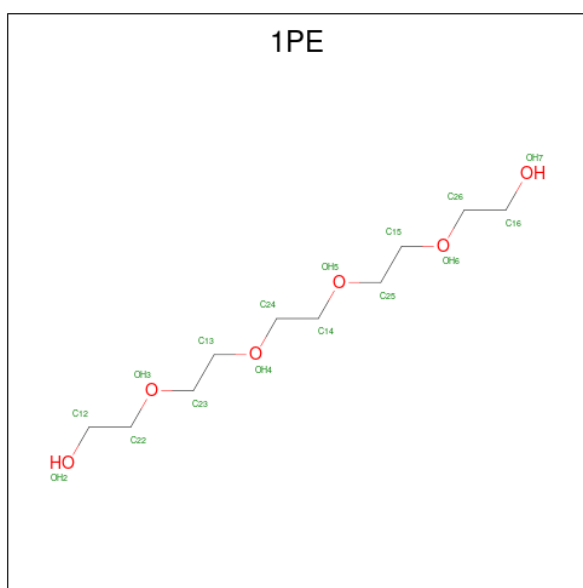
Chain	Residue	Modelled	Actual	Comment	Reference
A	260	LEU	-	expression tag	UNP Q9AMH9
A	261	GLU	-	expression tag	UNP Q9AMH9
A	262	HIS	-	expression tag	UNP Q9AMH9
A	263	HIS	-	expression tag	UNP Q9AMH9
A	264	HIS	-	expression tag	UNP Q9AMH9
A	265	HIS	-	expression tag	UNP Q9AMH9
A	266	HIS	-	expression tag	UNP Q9AMH9
A	267	HIS	-	expression tag	UNP Q9AMH9
B	260	LEU	-	expression tag	UNP Q9AMH9
B	261	GLU	-	expression tag	UNP Q9AMH9
B	262	HIS	-	expression tag	UNP Q9AMH9
B	263	HIS	-	expression tag	UNP Q9AMH9
B	264	HIS	-	expression tag	UNP Q9AMH9
B	265	HIS	-	expression tag	UNP Q9AMH9
B	266	HIS	-	expression tag	UNP Q9AMH9
B	267	HIS	-	expression tag	UNP Q9AMH9

- Molecule 2 is SIMOCYCLINONE C4 (three-letter code: SMQ) (formula: C<sub>37</sub>H<sub>38</sub>O<sub>15</sub>).



Mol	Chain	Residues	Atoms		ZeroOcc	AltConf	
2	A	1	Total	C	O	0	0
			52	37	15		
2	B	1	Total	C	O	0	0
			52	37	15		

- Molecule 3 is PENTAETHYLENE GLYCOL (three-letter code: 1PE) (formula:  $C_{10}H_{22}O_6$ ).



Mol	Chain	Residues	Atoms		ZeroOcc	AltConf	
3	A	1	Total	C	O	0	0
			16	10	6		

- Molecule 4 is TETRAETHYLENE GLYCOL (three-letter code: PG4) (formula:  $C_8H_{18}O_5$ ).



Mol	Chain	Residues	Atoms	ZeroOcc	AltConf
4	A	1	Total C O 10 6 4	0	0

- Molecule 5 is CHLORIDE ION (three-letter code: CL) (formula: Cl).

Mol	Chain	Residues	Atoms	ZeroOcc	AltConf
5	A	3	Total Cl 3 3	0	0
5	B	5	Total Cl 5 5	0	0

- Molecule 6 is CALCIUM ION (three-letter code: CA) (formula: Ca).

Mol	Chain	Residues	Atoms	ZeroOcc	AltConf
6	B	1	Total Ca 1 1	0	0


- Molecule 7 is water.

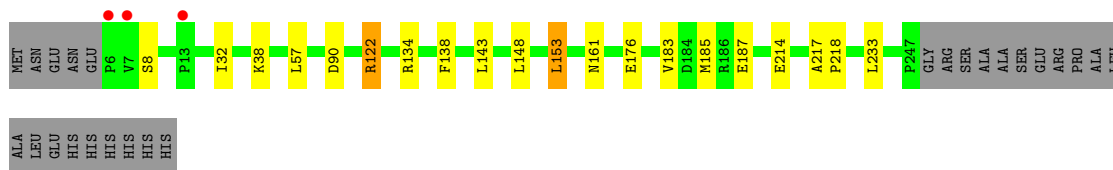
Mol	Chain	Residues	Atoms	ZeroOcc	AltConf
7	A	169	Total O 169 169	0	0
7	B	108	Total O 108 108	0	0

### 3 Residue-property plots [i](#)


These plots are drawn for all protein, RNA, DNA and oligosaccharide chains in the entry. The first graphic for a chain summarises the proportions of the various outlier classes displayed in the second graphic. The second graphic shows the sequence view annotated by issues in geometry and electron density. Residues are color-coded according to the number of geometric quality criteria for which they contain at least one outlier: green = 0, yellow = 1, orange = 2 and red = 3 or more. A red dot above a residue indicates a poor fit to the electron density ( $RSRZ > 2$ ). Stretches of 2 or more consecutive residues without any outlier are shown as a green connector. Residues present in the sample, but not in the model, are shown in grey.

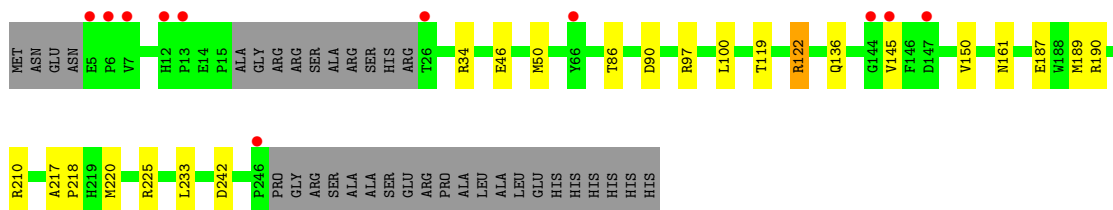
- Molecule 1: PUTATIVE REPRESSOR SIMREG2

Chain A: 



- Molecule 1: PUTATIVE REPRESSOR SIMREG2

Chain B: 



## 4 Data and refinement statistics

Property	Value	Source
Space group	P 65 2 2	Depositor
Cell constants a, b, c, $\alpha$ , $\beta$ , $\gamma$	86.57Å 86.57Å 349.86Å 90.00° 90.00° 120.00°	Depositor
Resolution (Å)	74.97 – 2.30 63.06 – 2.30	Depositor EDS
% Data completeness (in resolution range)	96.3 (74.97-2.30) 96.4 (63.06-2.30)	Depositor EDS
$R_{merge}$	0.11	Depositor
$R_{sym}$	(Not available)	Depositor
$\langle I/\sigma(I) \rangle$ <sup>1</sup>	4.18 (at 2.29Å)	Xtrriage
Refinement program	REFMAC 5.5.0091	Depositor
R, $R_{free}$	0.198 , 0.246 0.195 , 0.245	Depositor DCC
$R_{free}$ test set	1726 reflections (5.01%)	wwPDB-VP
Wilson B-factor (Å <sup>2</sup> )	22.3	Xtrriage
Anisotropy	0.252	Xtrriage
Bulk solvent $k_{sol}$ (e/Å <sup>3</sup> ), $B_{sol}$ (Å <sup>2</sup> )	0.34 , 37.0	EDS
L-test for twinning <sup>2</sup>	$\langle  L  \rangle = 0.48$ , $\langle L^2 \rangle = 0.31$	Xtrriage
Estimated twinning fraction	No twinning to report.	Xtrriage
$F_o, F_c$ correlation	0.93	EDS
Total number of atoms	4226	wwPDB-VP
Average B, all atoms (Å <sup>2</sup> )	20.0	wwPDB-VP

Xtrriage's analysis on translational NCS is as follows: *The largest off-origin peak in the Patterson function is 4.99% of the height of the origin peak. No significant pseudotranslation is detected.*

<sup>1</sup>Intensities estimated from amplitudes.

<sup>2</sup>Theoretical values of  $\langle |L| \rangle$ ,  $\langle L^2 \rangle$  for acentric reflections are 0.5, 0.333 respectively for untwinned datasets, and 0.375, 0.2 for perfectly twinned datasets.



## 5 Model quality [i](#)

### 5.1 Standard geometry [i](#)

Bond lengths and bond angles in the following residue types are not validated in this section: PG4, CA, CL, 1PE, SMQ

The Z score for a bond length (or angle) is the number of standard deviations the observed value is removed from the expected value. A bond length (or angle) with  $|Z| > 5$  is considered an outlier worth inspection. RMSZ is the root-mean-square of all Z scores of the bond lengths (or angles).

Mol	Chain	Bond lengths		Bond angles	
		RMSZ	# Z  >5	RMSZ	# Z  >5
1	A	0.79	0/2001	0.78	2/2721 (0.1%)
1	B	0.78	0/1924	0.83	5/2616 (0.2%)
All	All	0.79	0/3925	0.80	7/5337 (0.1%)

There are no bond length outliers.

All (7) bond angle outliers are listed below:

Mol	Chain	Res	Type	Atoms	Z	Observed(°)	Ideal(°)
1	B	50	MET	CG-SD-CE	-8.39	86.77	100.20
1	A	122	ARG	NE-CZ-NH2	-7.43	116.59	120.30
1	B	122	ARG	NE-CZ-NH2	-6.67	116.97	120.30
1	A	122	ARG	NE-CZ-NH1	5.55	123.07	120.30
1	B	122	ARG	NE-CZ-NH1	5.45	123.02	120.30
1	B	34	ARG	NE-CZ-NH1	5.24	122.92	120.30
1	B	220	MET	CG-SD-CE	5.23	108.57	100.20

There are no chirality outliers.

There are no planarity outliers.

### 5.2 Too-close contacts [i](#)

In the following table, the Non-H and H(model) columns list the number of non-hydrogen atoms and hydrogen atoms in the chain respectively. The H(added) column lists the number of hydrogen atoms added and optimized by MolProbity. The Clashes column lists the number of clashes within the asymmetric unit, whereas Symm-Clashes lists symmetry-related clashes.

Mol	Chain	Non-H	H(model)	H(added)	Clashes	Symm-Clashes
1	A	1940	0	1912	19	0
1	B	1870	0	1840	17	0

*Continued on next page...*

Continued from previous page...

Mol	Chain	Non-H	H(model)	H(added)	Clashes	Symm-Clashes
2	A	52	0	36	6	0
2	B	52	0	36	2	0
3	A	16	0	22	0	0
4	A	10	0	12	7	0
5	A	3	0	0	0	0
5	B	5	0	0	0	0
6	B	1	0	0	0	0
7	A	169	0	0	3	0
7	B	108	0	0	3	0
All	All	4226	0	3858	37	0

The all-atom clashscore is defined as the number of clashes found per 1000 atoms (including hydrogen atoms). The all-atom clashscore for this structure is 5.

All (37) close contacts within the same asymmetric unit are listed below, sorted by their clash magnitude.

Atom-1	Atom-2	Interatomic distance (Å)	Clash overlap (Å)
2:A:501:SMQ:H3I	1:B:161:ASN:OD1	1.73	0.86
2:B:501:SMQ:O1H	2:B:501:SMQ:H1IA	1.76	0.84
1:A:161:ASN:OD1	2:B:501:SMQ:H3I	1.78	0.83
2:A:501:SMQ:O1H	2:A:501:SMQ:H1IA	1.82	0.80
1:A:138:PHE:HB2	4:A:1249:PG4:H21	1.64	0.78
2:A:501:SMQ:H3F	1:B:136:GLN:HE21	1.56	0.69
1:B:145:VAL:HG12	1:B:145:VAL:O	1.93	0.68
1:A:134:ARG:HG2	4:A:1249:PG4:H12	1.74	0.67
1:B:97[B]:ARG:NH2	7:B:2041:HOH:O	2.28	0.66
1:A:134:ARG:CG	4:A:1249:PG4:H12	2.26	0.65
1:A:90:ASP:OD1	4:A:1249:PG4:H51	1.99	0.63
1:B:233:LEU:C	1:B:233:LEU:HD13	2.25	0.58
1:A:90:ASP:O	4:A:1249:PG4:H22	2.07	0.54
1:A:185:MET:HE1	7:A:2151:HOH:O	2.08	0.53
1:A:233:LEU:C	1:A:233:LEU:HD13	2.29	0.52
1:A:134:ARG:HG3	4:A:1249:PG4:H32	1.93	0.51
1:B:86:THR:HG21	7:B:2063:HOH:O	2.12	0.50
1:A:134:ARG:NH1	4:A:1249:PG4:H32	2.28	0.49
1:A:143:LEU:HB2	1:A:153:LEU:HD13	1.94	0.49
1:A:148:LEU:O	1:B:210:ARG:NH2	2.46	0.48
1:B:187:GLU:OE2	1:B:190:ARG:NH1	2.48	0.47
1:A:217:ALA:HB3	1:A:218:PRO:HD3	1.97	0.47
1:B:145:VAL:O	1:B:145:VAL:CG1	2.61	0.46
1:B:217:ALA:HB3	1:B:218:PRO:HD3	1.98	0.46

Continued on next page...

Continued from previous page...

Atom-1	Atom-2	Interatomic distance (Å)	Clash overlap (Å)
1:B:217:ALA:O	1:B:225:ARG:HD3	2.16	0.45
1:B:122:ARG:NH2	7:B:2056:HOH:O	2.44	0.45
1:A:122:ARG:HD3	1:B:119:THR:HG21	1.98	0.45
2:A:501:SMQ:O1G	2:A:501:SMQ:C1M	2.66	0.44
2:A:501:SMQ:O1C	7:A:2166:HOH:O	2.22	0.43
1:A:183:VAL:HG13	1:A:187:GLU:CG	2.49	0.42
1:B:189:MET:HB3	1:B:189:MET:HE2	1.95	0.41
1:A:183:VAL:HG13	1:A:187:GLU:HG3	2.02	0.41
1:A:214:GLU:HB2	1:B:150:VAL:HG21	2.01	0.41
1:A:32:ILE:HA	1:A:57:LEU:HD11	2.03	0.41
2:A:501:SMQ:H1F	7:A:2168:HOH:O	2.21	0.41
1:A:176:GLU:OE2	1:B:122:ARG:HD3	2.20	0.40
1:B:100:LEU:HD23	1:B:100:LEU:HA	1.94	0.40

There are no symmetry-related clashes.

### 5.3 Torsion angles [i](#)

#### 5.3.1 Protein backbone [i](#)

In the following table, the Percentiles column shows the percent Ramachandran outliers of the chain as a percentile score with respect to all X-ray entries followed by that with respect to entries of similar resolution.

The Analysed column shows the number of residues for which the backbone conformation was analysed, and the total number of residues.

Mol	Chain	Analysed	Favoured	Allowed	Outliers	Percentiles	
1	A	244/267 (91%)	243 (100%)	1 (0%)	0	100	100
1	B	232/267 (87%)	225 (97%)	7 (3%)	0	100	100
All	All	476/534 (89%)	468 (98%)	8 (2%)	0	100	100

There are no Ramachandran outliers to report.

#### 5.3.2 Protein sidechains [i](#)

In the following table, the Percentiles column shows the percent sidechain outliers of the chain as a percentile score with respect to all X-ray entries followed by that with respect to entries of similar resolution.

The Analysed column shows the number of residues for which the sidechain conformation was analysed, and the total number of residues.

Mol	Chain	Analysed	Rotameric	Outliers	Percentiles	
1	A	202/221 (91%)	199 (98%)	3 (2%)	65	79
1	B	196/221 (89%)	193 (98%)	3 (2%)	65	79
All	All	398/442 (90%)	392 (98%)	6 (2%)	65	79

All (6) residues with a non-rotameric sidechain are listed below:

Mol	Chain	Res	Type
1	A	8	SER
1	A	38	LYS
1	A	153	LEU
1	B	46	GLU
1	B	90	ASP
1	B	242	ASP

Sometimes sidechains can be flipped to improve hydrogen bonding and reduce clashes. All (1) such sidechains are listed below:

Mol	Chain	Res	Type
1	B	136	GLN

### 5.3.3 RNA [i](#)

There are no RNA molecules in this entry.

## 5.4 Non-standard residues in protein, DNA, RNA chains [i](#)

There are no non-standard protein/DNA/RNA residues in this entry.

## 5.5 Carbohydrates [i](#)

There are no monosaccharides in this entry.

## 5.6 Ligand geometry [i](#)

Of 13 ligands modelled in this entry, 9 are monoatomic - leaving 4 for Mogul analysis.

In the following table, the Counts columns list the number of bonds (or angles) for which Mogul statistics could be retrieved, the number of bonds (or angles) that are observed in the model and the number of bonds (or angles) that are defined in the Chemical Component Dictionary. The Link column lists molecule types, if any, to which the group is linked. The Z score for a bond length (or angle) is the number of standard deviations the observed value is removed from the expected value. A bond length (or angle) with  $|Z| > 2$  is considered an outlier worth inspection. RMSZ is the root-mean-square of all Z scores of the bond lengths (or angles).

Mol	Type	Chain	Res	Link	Bond lengths			Bond angles		
					Counts	RMSZ	# Z  > 2	Counts	RMSZ	# Z  > 2
2	SMQ	B	501	-	52,57,57	2.40	15 (28%)	57,90,90	2.78	16 (28%)
3	1PE	A	1248	-	15,15,15	0.72	0	14,14,14	0.88	1 (7%)
2	SMQ	A	501	-	52,57,57	2.44	17 (32%)	57,90,90	3.18	21 (36%)
4	PG4	A	1249	-	9,9,12	1.25	1 (11%)	8,8,11	0.74	0

In the following table, the Chirals column lists the number of chiral outliers, the number of chiral centers analysed, the number of these observed in the model and the number defined in the Chemical Component Dictionary. Similar counts are reported in the Torsion and Rings columns. '-' means no outliers of that kind were identified.

Mol	Type	Chain	Res	Link	Chirals	Torsions	Rings
2	SMQ	B	501	-	-	4/23/115/115	0/6/6/6
3	1PE	A	1248	-	-	1/13/13/13	-
2	SMQ	A	501	-	-	1/23/115/115	0/6/6/6
4	PG4	A	1249	-	-	4/7/7/10	-

All (33) bond length outliers are listed below:

Mol	Chain	Res	Type	Atoms	Z	Observed(Å)	Ideal(Å)
2	B	501	SMQ	C1C-C1D	6.73	1.57	1.51
2	B	501	SMQ	C3G-C3F	6.14	1.52	1.36
2	A	501	SMQ	C3E-C3D	5.91	1.51	1.36
2	A	501	SMQ	C1Q-C1P	-5.58	1.40	1.48
2	B	501	SMQ	C3E-C3D	5.57	1.50	1.36
2	B	501	SMQ	C1Q-C1P	-5.46	1.40	1.48
2	A	501	SMQ	O1H-C1O	5.32	1.61	1.45
2	A	501	SMQ	C3G-C3F	5.01	1.49	1.36
2	B	501	SMQ	O1H-C1E	-4.52	1.38	1.45
2	A	501	SMQ	C3B-C3A	-4.43	1.37	1.48
2	B	501	SMQ	C3B-C3A	-4.34	1.38	1.48
2	A	501	SMQ	C1C-C1D	4.16	1.55	1.51
2	A	501	SMQ	O1H-C1E	-3.98	1.39	1.45
2	A	501	SMQ	C3I-C3J	-3.91	1.39	1.48

*Continued on next page...*

*Continued from previous page...*

Mol	Chain	Res	Type	Atoms	Z	Observed(Å)	Ideal(Å)
2	B	501	SMQ	C3I-C3J	-3.85	1.39	1.48
2	B	501	SMQ	O1H-C1O	3.79	1.56	1.45
2	A	501	SMQ	C1L-C1M	-3.40	1.38	1.45
2	A	501	SMQ	C3H-C3G	3.28	1.53	1.44
2	A	501	SMQ	C3D-C3C	3.25	1.53	1.44
2	A	501	SMQ	C3F-C3E	3.12	1.53	1.44
2	B	501	SMQ	C2B-C2C	2.89	1.57	1.52
2	A	501	SMQ	C1G-C1H	2.84	1.56	1.53
2	B	501	SMQ	C3H-C3G	2.83	1.52	1.44
2	A	501	SMQ	C3H-C3I	2.81	1.41	1.34
2	B	501	SMQ	C1L-C1M	-2.80	1.39	1.45
2	B	501	SMQ	O2B-C2D	-2.69	1.40	1.44
2	A	501	SMQ	O3B-C3J	2.66	1.29	1.23
2	B	501	SMQ	C3F-C3E	2.63	1.51	1.44
2	A	501	SMQ	O2D-C2C	-2.54	1.41	1.46
2	B	501	SMQ	C1L-C1J	2.48	1.40	1.33
2	A	501	SMQ	O2A-C2E	-2.40	1.39	1.44
2	B	501	SMQ	C3D-C3C	2.35	1.51	1.44
4	A	1249	PG4	O2-C3	2.34	1.52	1.42

All (38) bond angle outliers are listed below:

Mol	Chain	Res	Type	Atoms	Z	Observed(°)	Ideal(°)
2	A	501	SMQ	O1H-C1E-C1O	11.67	67.05	60.07
2	A	501	SMQ	C3D-C3C-C3B	-8.87	102.51	124.67
2	B	501	SMQ	O1H-C1E-C1O	8.00	64.85	60.07
2	A	501	SMQ	C3F-C3E-C3D	-7.80	107.44	124.81
2	B	501	SMQ	C3H-C3G-C3F	-7.59	107.92	124.81
2	B	501	SMQ	C3F-C3E-C3D	-7.51	108.11	124.81
2	B	501	SMQ	C3D-C3C-C3B	-7.23	106.63	124.67
2	A	501	SMQ	C3H-C3G-C3F	-6.80	109.69	124.81
2	B	501	SMQ	C3E-C3F-C3G	-6.30	110.80	124.81
2	B	501	SMQ	C3G-C3H-C3I	-5.57	110.77	124.67
2	A	501	SMQ	C3E-C3F-C3G	-5.38	112.84	124.81
2	A	501	SMQ	C2C-O2D-C3A	-5.17	109.77	117.45
2	B	501	SMQ	C3C-C3D-C3E	-5.16	113.33	124.81
2	A	501	SMQ	C3G-C3H-C3I	-5.08	111.99	124.67
2	A	501	SMQ	C1H-C1G-C1F	4.95	117.73	113.94
2	A	501	SMQ	C3C-C3D-C3E	-4.68	114.40	124.81
2	A	501	SMQ	O1D-C1H-C1I	4.04	117.69	108.00
2	B	501	SMQ	O2B-C2G-C2H	3.55	117.61	111.09
2	B	501	SMQ	C1H-C1G-C1F	3.49	116.61	113.94

*Continued on next page...*

Continued from previous page...

Mol	Chain	Res	Type	Atoms	Z	Observed(°)	Ideal(°)
2	A	501	SMQ	O2B-C2G-C2H	3.37	117.30	111.09
2	A	501	SMQ	C3H-C3I-C3J	-3.17	118.16	123.66
2	B	501	SMQ	O2A-C2E-C2F	3.14	113.48	106.70
2	A	501	SMQ	O1H-C1O-C1E	-3.01	52.34	58.70
2	A	501	SMQ	O2B-C2D-C2E	-2.99	101.87	107.83
2	A	501	SMQ	C2D-O2B-C2G	-2.82	113.36	117.72
2	B	501	SMQ	O1H-C1O-C1E	-2.78	52.85	58.70
2	B	501	SMQ	O1D-C1H-C1I	2.76	114.62	108.00
2	B	501	SMQ	O2D-C3A-C3B	2.65	117.39	111.38
2	A	501	SMQ	O1H-C1O-C1P	2.53	118.81	112.59
2	B	501	SMQ	C2B-C2C-C2D	2.50	115.42	110.61
2	B	501	SMQ	C2D-O2B-C2G	-2.47	113.90	117.72
2	A	501	SMQ	C3C-C3B-C3A	2.46	129.40	123.36
2	A	501	SMQ	O2A-C2A-C2B	-2.42	105.63	109.87
3	A	1248	1PE	OH4-C24-C14	-2.40	99.56	110.39
2	A	501	SMQ	O2D-C2C-C2B	-2.33	103.25	108.08
2	A	501	SMQ	O4-C3J-O3B	2.19	127.22	122.67
2	A	501	SMQ	C1N-C1M-C1L	2.08	120.84	116.99
2	B	501	SMQ	C1S-C1A-C1B	2.07	120.07	117.68

There are no chirality outliers.

All (10) torsion outliers are listed below:

Mol	Chain	Res	Type	Atoms
4	A	1249	PG4	O2-C3-C4-O3
4	A	1249	PG4	O1-C1-C2-O2
2	B	501	SMQ	C3C-C3D-C3E-C3F
2	B	501	SMQ	C3G-C3H-C3I-C3J
4	A	1249	PG4	C4-C3-O2-C2
2	A	501	SMQ	C3A-C3B-C3C-C3D
4	A	1249	PG4	O3-C5-C6-O4
3	A	1248	1PE	C13-C23-OH3-C22
2	B	501	SMQ	C3F-C3G-C3H-C3I
2	B	501	SMQ	C3E-C3F-C3G-C3H

There are no ring outliers.

3 monomers are involved in 15 short contacts:

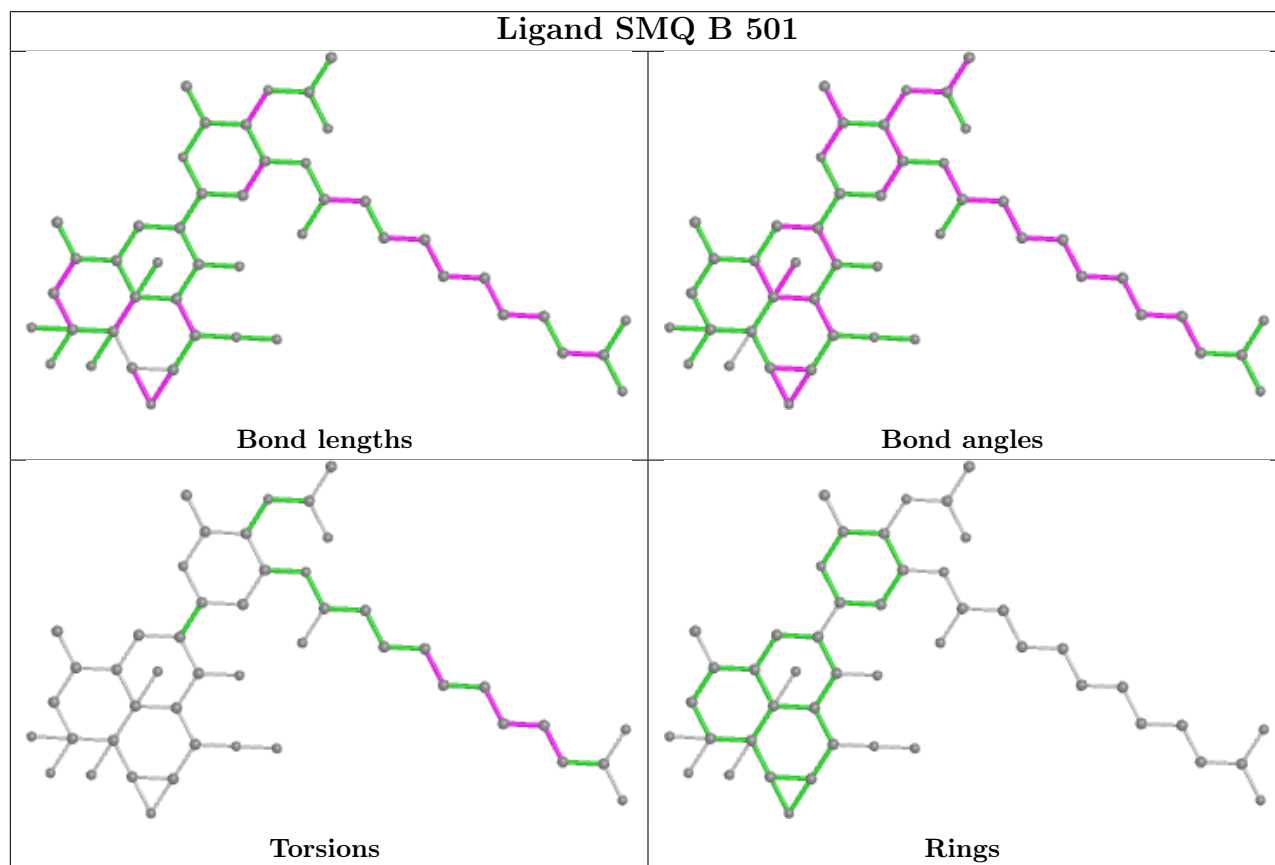
Mol	Chain	Res	Type	Clashes	Symm-Clashes
2	B	501	SMQ	2	0
2	A	501	SMQ	6	0

Continued on next page...

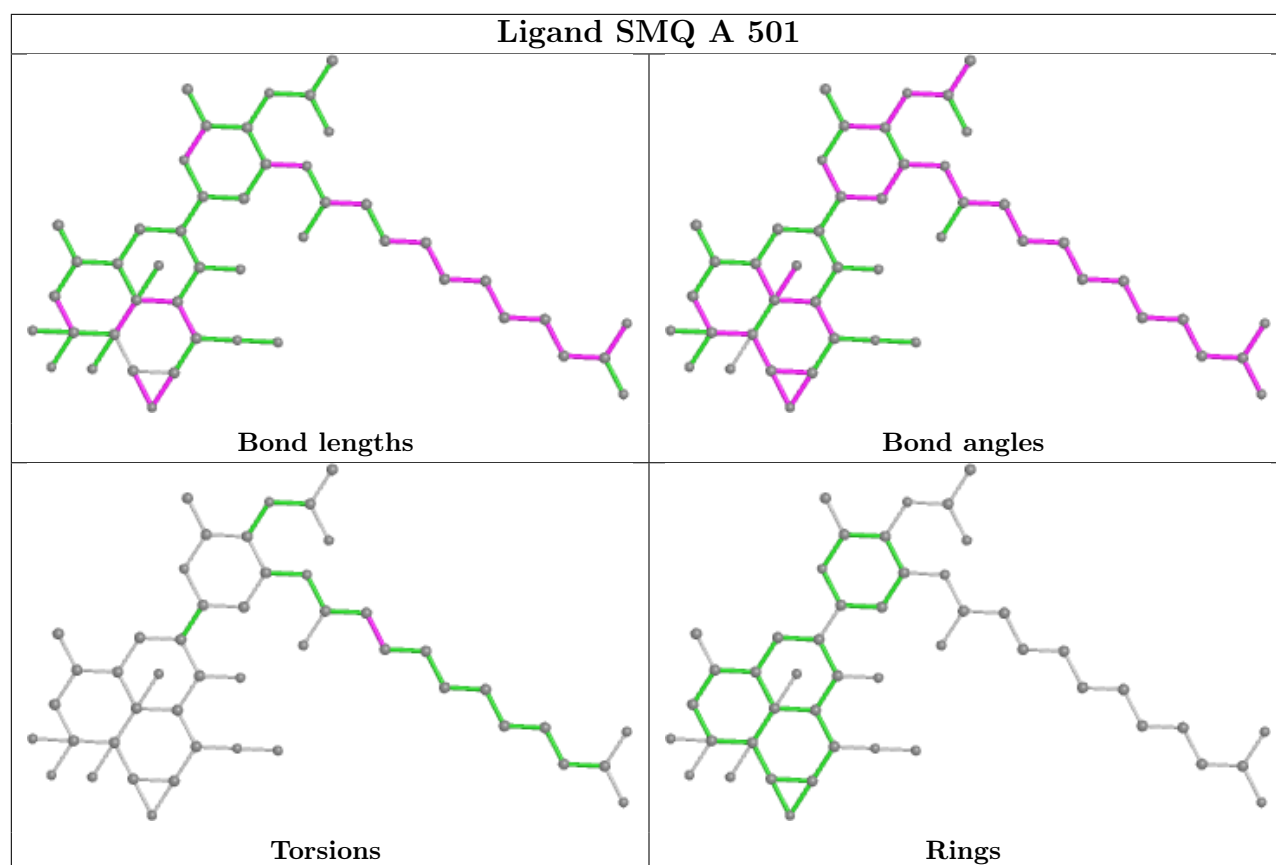
*Continued from previous page...*

Mol	Chain	Res	Type	Clashes	Symm-Clashes
4	A	1249	PG4	7	0

The following is a two-dimensional graphical depiction of Mogul quality analysis of bond lengths, bond angles, torsion angles, and ring geometry for all instances of the Ligand of Interest. In addition, ligands with molecular weight > 250 and outliers as shown on the validation Tables will also be included. For torsion angles, if less than 5% of the Mogul distribution of torsion angles is within 10 degrees of the torsion angle in question, then that torsion angle is considered an outlier. Any bond that is central to one or more torsion angles identified as an outlier by Mogul will be highlighted in the graph. For rings, the root-mean-square deviation (RMSD) between the ring in question and similar rings identified by Mogul is calculated over all ring torsion angles. If the average RMSD is greater than 60 degrees and the minimal RMSD between the ring in question and any Mogul-identified rings is also greater than 60 degrees, then that ring is considered an outlier. The outliers are highlighted in purple. The color gray indicates Mogul did not find sufficient equivalents in the CSD to analyse the geometry.







## 5.7 Other polymers [i](#)

There are no such residues in this entry.

## 5.8 Polymer linkage issues [i](#)

There are no chain breaks in this entry.

## 6 Fit of model and data [i](#)

### 6.1 Protein, DNA and RNA chains [i](#)

In the following table, the column labelled ‘#RSRZ > 2’ contains the number (and percentage) of RSRZ outliers, followed by percent RSRZ outliers for the chain as percentile scores relative to all X-ray entries and entries of similar resolution. The OWAB column contains the minimum, median, 95<sup>th</sup> percentile and maximum values of the occupancy-weighted average B-factor per residue. The column labelled ‘Q < 0.9’ lists the number of (and percentage) of residues with an average occupancy less than 0.9.

Mol	Chain	Analysed	<RSRZ>	#RSRZ>2	OWAB(Å <sup>2</sup> )	Q<0.9
1	A	242/267 (90%)	-0.47	3 (1%) 79 83	9, 17, 38, 48	0
1	B	232/267 (86%)	-0.34	11 (4%) 31 38	8, 19, 40, 60	0
All	All	474/534 (88%)	-0.41	14 (2%) 50 57	8, 18, 39, 60	0

All (14) RSRZ outliers are listed below:

Mol	Chain	Res	Type	RSRZ
1	B	13	PRO	5.4
1	A	6	PRO	3.6
1	A	7	VAL	3.5
1	B	66	TYR	3.4
1	B	144	GLY	3.3
1	B	12	HIS	3.1
1	B	7	VAL	2.9
1	A	13	PRO	2.6
1	B	246	PRO	2.6
1	B	26	THR	2.6
1	B	6	PRO	2.5
1	B	145	VAL	2.5
1	B	5	GLU	2.3
1	B	147	ASP	2.1

### 6.2 Non-standard residues in protein, DNA, RNA chains [i](#)

There are no non-standard protein/DNA/RNA residues in this entry.

### 6.3 Carbohydrates [i](#)

There are no monosaccharides in this entry.

## 6.4 Ligands

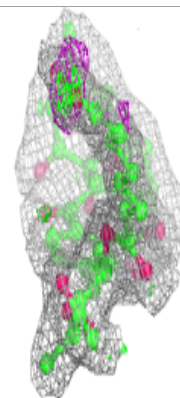
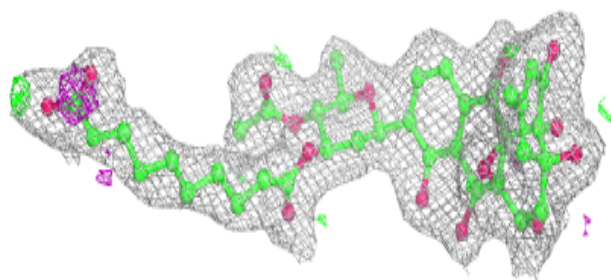
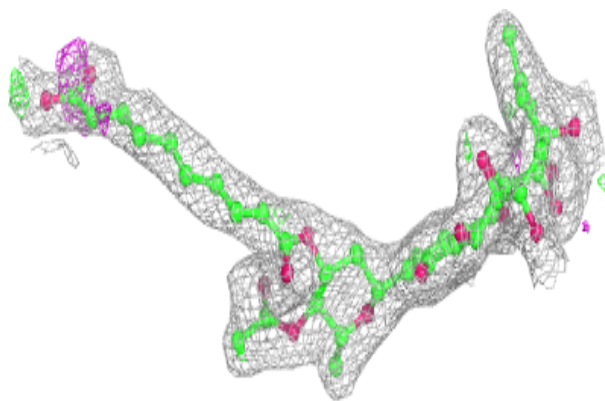
In the following table, the Atoms column lists the number of modelled atoms in the group and the number defined in the chemical component dictionary. The B-factors column lists the minimum, median, 95<sup>th</sup> percentile and maximum values of B factors of atoms in the group. The column labelled 'Q< 0.9' lists the number of atoms with occupancy less than 0.9.

Mol	Type	Chain	Res	Atoms	RSCC	RSR	B-factors(Å <sup>2</sup> )	Q<0.9
4	PG4	A	1249	10/13	0.84	0.19	20,36,48,51	0
3	1PE	A	1248	16/16	0.92	0.15	24,37,46,47	0
2	SMQ	A	501	52/52	0.92	0.12	15,21,30,34	0
2	SMQ	B	501	52/52	0.93	0.11	12,24,36,42	0
5	CL	A	1251	1/1	0.95	0.08	30,30,30,30	0
5	CL	B	1250	1/1	0.95	0.09	40,40,40,40	0
5	CL	B	1251	1/1	0.95	0.11	34,34,34,34	0
5	CL	A	1252	1/1	0.96	0.06	38,38,38,38	0
5	CL	B	1252	1/1	0.96	0.09	49,49,49,49	0
5	CL	B	1249	1/1	0.97	0.23	38,38,38,38	0
5	CL	A	1250	1/1	0.98	0.12	40,40,40,40	0
5	CL	B	1248	1/1	0.98	0.07	32,32,32,32	0
6	CA	B	1247	1/1	0.98	0.10	24,24,24,24	0

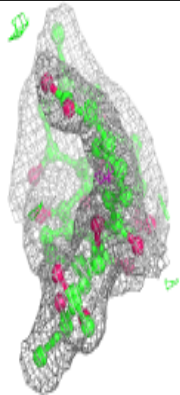
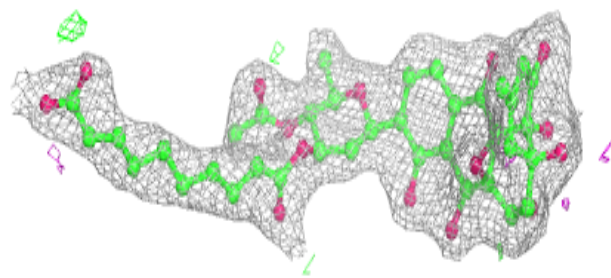
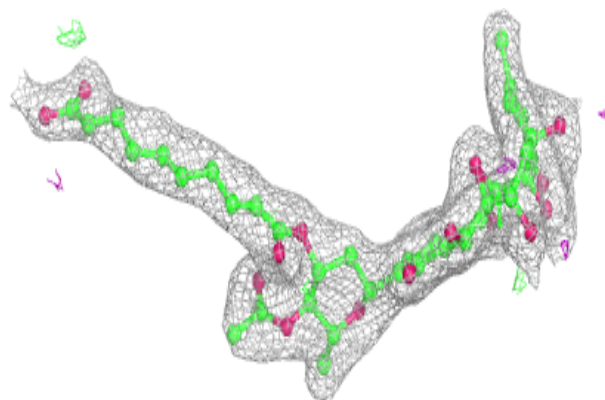
The following is a graphical depiction of the model fit to experimental electron density of all instances of the Ligand of Interest. In addition, ligands with molecular weight > 250 and outliers as shown on the geometry validation Tables will also be included. Each fit is shown from different orientation to approximate a three-dimensional view.

**Electron density around SMQ A 501:**

$2mF_o-DF_c$  (at 0.7 rmsd) in gray  
 $mF_o-DF_c$  (at 3 rmsd) in purple (negative)  
and green (positive)

**Electron density around SMQ B 501:**

$2mF_o-DF_c$  (at 0.7 rmsd) in gray  
 $mF_o-DF_c$  (at 3 rmsd) in purple (negative)  
and green (positive)



## 6.5 Other polymers [i](#)

There are no such residues in this entry.