



Full wwPDB X-ray Structure Validation Report ⓘ

Dec 31, 2024 – 08:08 PM JST

PDB ID : 8Y4E
Title : Crystal structure of SARS main protease in complex with Bofutrelvir
Authors : Lin, C.; Wang, W.W.; Zhang, J.; Li, J.
Deposited on : 2024-01-30
Resolution : 2.04 Å(reported)

This is a Full wwPDB X-ray Structure Validation Report for a publicly released PDB entry.

We welcome your comments at validation@mail.wwpdb.org

A user guide is available at

<https://www.wwpdb.org/validation/2017/XrayValidationReportHelp>

with specific help available everywhere you see the ⓘ symbol.

The types of validation reports are described at

<http://www.wwpdb.org/validation/2017/FAQs#types>.

The following versions of software and data (see [references ⓘ](#)) were used in the production of this report:

MolProbity : 4.02b-467
Mogul : 1.8.5 (274361), CSD as541be (2020)
Xtriage (Phenix) : 1.21
EDS : 3.0
buster-report : 1.1.7 (2018)
Percentile statistics : 20231227.v01 (using entries in the PDB archive December 27th 2023)
CCP4 : 9.0.004 (Gargrove)
Density-Fitness : 1.0.11
Ideal geometry (proteins) : Engh & Huber (2001)
Ideal geometry (DNA, RNA) : Parkinson et al. (1996)
Validation Pipeline (wwPDB-VP) : 2.40

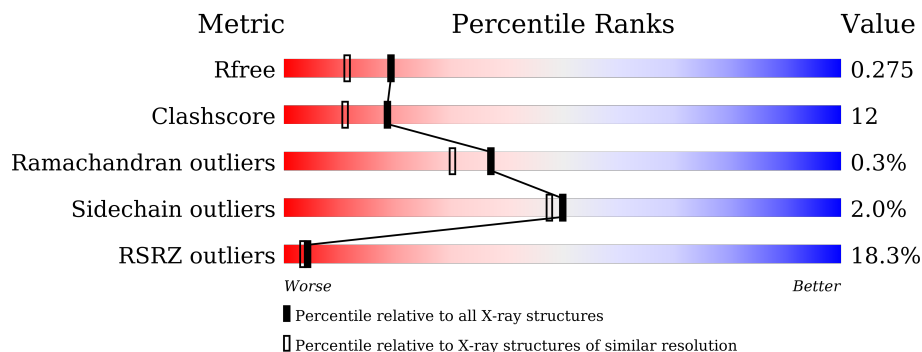
1 Overall quality at a glance

The following experimental techniques were used to determine the structure:

X-RAY DIFFRACTION

The reported resolution of this entry is 2.04 Å.

Percentile scores (ranging between 0-100) for global validation metrics of the entry are shown in the following graphic. The table shows the number of entries on which the scores are based.



Metric	Whole archive (#Entries)	Similar resolution (#Entries, resolution range(Å))
R_{free}	164625	2096 (2.04-2.04)
Clashscore	180529	2229 (2.04-2.04)
Ramachandran outliers	177936	2217 (2.04-2.04)
Sidechain outliers	177891	2217 (2.04-2.04)
RSRZ outliers	164620	2096 (2.04-2.04)

The table below summarises the geometric issues observed across the polymeric chains and their fit to the electron density. The red, orange, yellow and green segments of the lower bar indicate the fraction of residues that contain outliers for ≥ 3 , 2, 1 and 0 types of geometric quality criteria respectively. A grey segment represents the fraction of residues that are not modelled. The numeric value for each fraction is indicated below the corresponding segment, with a dot representing fractions $\leq 5\%$. The upper red bar (where present) indicates the fraction of residues that have poor fit to the electron density. The numeric value is given above the bar.

Mol	Chain	Length	Quality of chain
1	A	298	 10% 78% 22%
1	B	298	 27% 77% 22%

2 Entry composition i

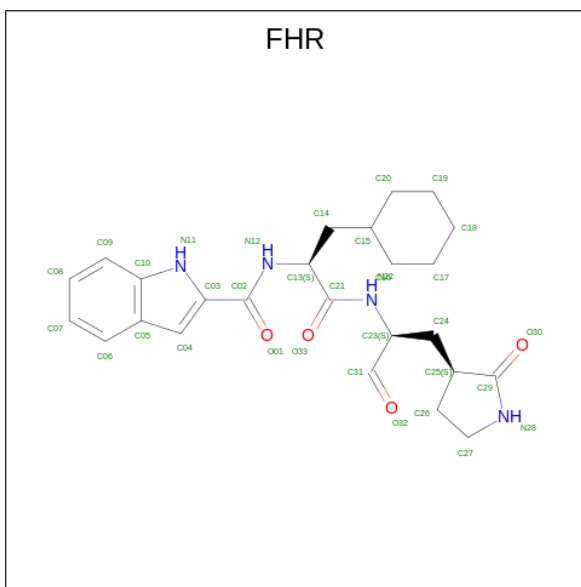
There are 3 unique types of molecules in this entry. The entry contains 4610 atoms, of which 0 are hydrogens and 0 are deuteriums.

In the tables below, the ZeroOcc column contains the number of atoms modelled with zero occupancy, the AltConf column contains the number of residues with at least one atom in alternate conformation and the Trace column contains the number of residues modelled with at most 2 atoms.

- Molecule 1 is a protein called 3C-like proteinase nsp5.

Mol	Chain	Residues	Atoms					ZeroOcc	AltConf	Trace
			Total	C	N	O	S			
1	A	298	Total 2191	C 1394	N 370	O 407	S 20	0	0	0
1	B	298	Total 2191	C 1394	N 370	O 407	S 20	0	0	0

- Molecule 2 is {N}-[(2 {S})-3-cyclohexyl-1-oxidanylidene-1-[(2 {S})-1-oxidanylidene-3-[(3 {S})-2-oxidanylidene-pyrrolidin-3-yl]propan-2-yl]amino]propan-2-yl]-1 {H}-indole-2-carboxamide (three-letter code: FHR) (formula: C₂₅H₃₂N₄O₄) (labeled as "Ligand of Interest" by depositor).



Mol	Chain	Residues	Atoms				ZeroOcc	AltConf
			Total	C	N	O		
2	A	1	Total 33	C 25	N 4	O 4	0	0
2	B	1	Total 33	C 25	N 4	O 4	0	0

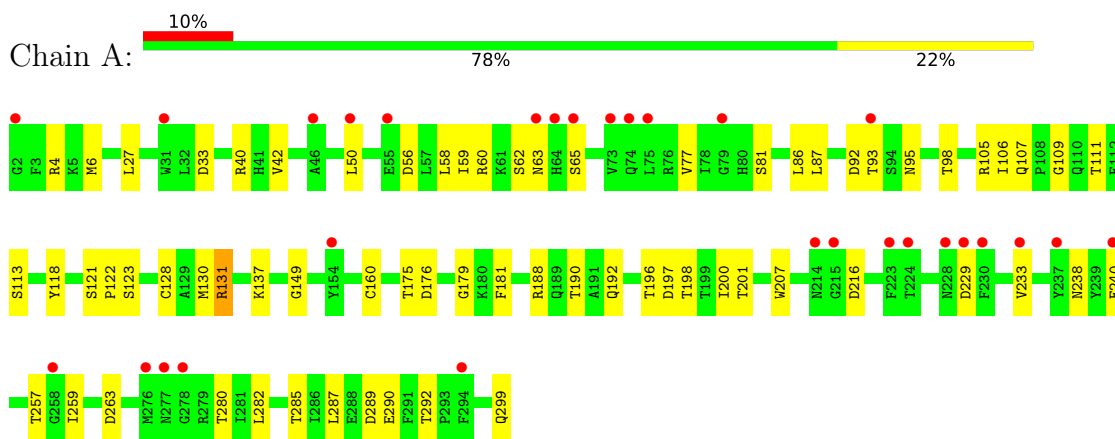
- Molecule 3 is water.

Mol	Chain	Residues	Atoms		ZeroOcc	AltConf
3	A	86	Total 86	O 86	0	0
3	B	76	Total 76	O 76	0	0

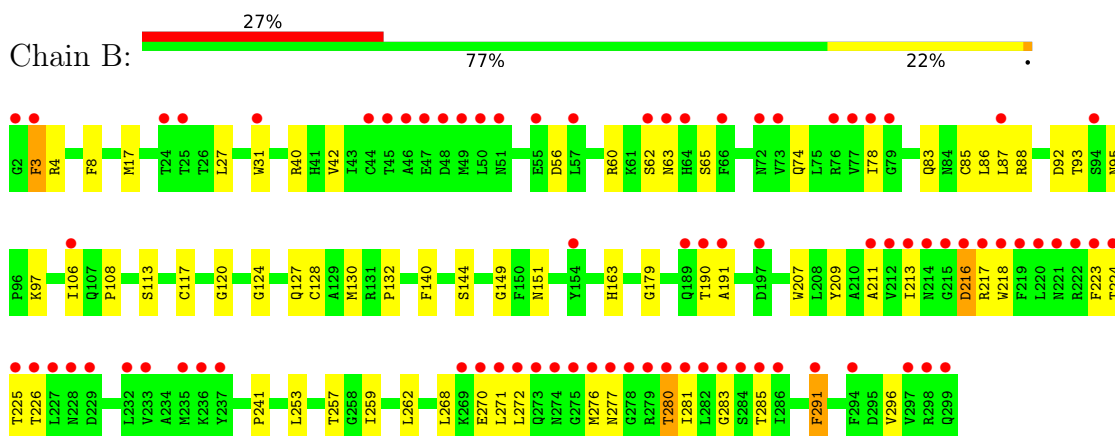
3 Residue-property plots [i](#)

These plots are drawn for all protein, RNA, DNA and oligosaccharide chains in the entry. The first graphic for a chain summarises the proportions of the various outlier classes displayed in the second graphic. The second graphic shows the sequence view annotated by issues in geometry and electron density. Residues are color-coded according to the number of geometric quality criteria for which they contain at least one outlier: green = 0, yellow = 1, orange = 2 and red = 3 or more. A red dot above a residue indicates a poor fit to the electron density ($RSRZ > 2$). Stretches of 2 or more consecutive residues without any outlier are shown as a green connector. Residues present in the sample, but not in the model, are shown in grey.

- Molecule 1: 3C-like proteinase nsp4



- Molecule 1: 3C-like proteinase nsp4



4 Data and refinement statistics

Property	Value	Source
Space group	P 1	Depositor
Cell constants a, b, c, α , β , γ	55.01Å 59.79Å 67.84Å 91.95° 102.78° 108.40°	Depositor
Resolution (Å)	26.82 – 2.04 26.82 – 2.04	Depositor EDS
% Data completeness (in resolution range)	97.5 (26.82-2.04) 97.4 (26.82-2.04)	Depositor EDS
R_{merge}	0.07	Depositor
R_{sym}	(Not available)	Depositor
$\langle I/\sigma(I) \rangle$ ¹	2.18 (at 2.04Å)	Xtriage
Refinement program	PHENIX 1.12_2829, PHENIX 1.12_2829	Depositor
R, R_{free}	0.238 , 0.274 0.238 , 0.275	Depositor DCC
R_{free} test set	2438 reflections (4.82%)	wwPDB-VP
Wilson B-factor (Å ²)	32.4	Xtriage
Anisotropy	0.395	Xtriage
Bulk solvent k_{sol} (e/Å ³), B_{sol} (Å ²)	0.37 , 43.4	EDS
L-test for twinning ²	$\langle L \rangle = 0.50$, $\langle L^2 \rangle = 0.34$	Xtriage
Estimated twinning fraction	No twinning to report.	Xtriage
F_o, F_c correlation	0.93	EDS
Total number of atoms	4610	wwPDB-VP
Average B, all atoms (Å ²)	40.0	wwPDB-VP

Xtriage's analysis on translational NCS is as follows: *The largest off-origin peak in the Patterson function is 7.51% of the height of the origin peak. No significant pseudotranslation is detected.*

¹Intensities estimated from amplitudes.

²Theoretical values of $\langle |L| \rangle$, $\langle L^2 \rangle$ for acentric reflections are 0.5, 0.333 respectively for untwinned datasets, and 0.375, 0.2 for perfectly twinned datasets.

5 Model quality [i](#)

5.1 Standard geometry [i](#)

Bond lengths and bond angles in the following residue types are not validated in this section: FHR

The Z score for a bond length (or angle) is the number of standard deviations the observed value is removed from the expected value. A bond length (or angle) with $|Z| > 5$ is considered an outlier worth inspection. RMSZ is the root-mean-square of all Z scores of the bond lengths (or angles).

Mol	Chain	Bond lengths		Bond angles	
		RMSZ	# Z >5	RMSZ	# Z >5
1	A	0.43	0/2241	0.60	0/3060
1	B	0.48	1/2241 (0.0%)	0.64	0/3060
All	All	0.46	1/4482 (0.0%)	0.62	0/6120

All (1) bond length outliers are listed below:

Mol	Chain	Res	Type	Atoms	Z	Observed(Å)	Ideal(Å)
1	B	128	CYS	CB-SG	-6.63	1.71	1.82

There are no bond angle outliers.

There are no chirality outliers.

There are no planarity outliers.

5.2 Too-close contacts [i](#)

In the following table, the Non-H and H(model) columns list the number of non-hydrogen atoms and hydrogen atoms in the chain respectively. The H(added) column lists the number of hydrogen atoms added and optimized by MolProbity. The Clashes column lists the number of clashes within the asymmetric unit, whereas Symm-Clashes lists symmetry-related clashes.

Mol	Chain	Non-H	H(model)	H(added)	Clashes	Symm-Clashes
1	A	2191	0	2045	48	0
1	B	2191	0	2045	55	0
2	A	33	0	0	0	0
2	B	33	0	0	1	0
3	A	86	0	0	11	0
3	B	76	0	0	8	0
All	All	4610	0	4090	101	0

The all-atom clashscore is defined as the number of clashes found per 1000 atoms (including hydrogen atoms). The all-atom clashscore for this structure is 12.

All (101) close contacts within the same asymmetric unit are listed below, sorted by their clash magnitude.

Atom-1	Atom-2	Interatomic distance (Å)	Clash overlap (Å)
1:A:229:ASP:O	3:A:401:HOH:O	1.87	0.93
1:B:3:PHE:HZ	1:B:296:VAL:HA	1.34	0.92
1:B:217:ARG:O	3:B:401:HOH:O	1.99	0.81
1:A:4:ARG:NH2	3:A:408:HOH:O	2.19	0.75
1:B:62:SER:O	1:B:65:SER:OG	2.10	0.70
1:B:31:TRP:CD2	1:B:95:ASN:HB2	2.27	0.69
1:A:58:LEU:O	3:A:403:HOH:O	2.11	0.68
1:A:33:ASP:OD2	3:A:402:HOH:O	2.10	0.68
1:B:216:ASP:OD1	3:B:403:HOH:O	2.12	0.68
1:A:263:ASP:OD2	3:A:404:HOH:O	2.12	0.68
1:A:81:SER:OG	3:A:405:HOH:O	2.14	0.64
1:A:299:GLN:O	3:A:406:HOH:O	2.15	0.64
1:A:6:MET:HE3	1:B:124:GLY:HA3	1.79	0.63
1:B:211:ALA:HB1	1:B:216:ASP:HB3	1.80	0.63
1:B:3:PHE:CZ	1:B:296:VAL:HA	2.25	0.61
1:A:131:ARG:HD3	1:A:197:ASP:OD2	2.02	0.60
1:B:106:ILE:HD12	1:B:130:MET:HB2	1.82	0.60
1:A:201:THR:H	1:A:240:GLU:HG2	1.66	0.59
1:A:40:ARG:HA	1:A:87:LEU:HG	1.85	0.59
1:A:257:THR:HB	1:A:259:ILE:HD12	1.85	0.58
1:B:106:ILE:CD1	1:B:130:MET:HB2	2.33	0.58
1:A:131:ARG:HH22	1:A:289:ASP:CG	2.07	0.57
1:B:209:TYR:CE1	1:B:257:THR:HG21	2.39	0.57
1:A:128:CYS:HA	3:A:407:HOH:O	2.05	0.56
1:B:280:THR:HG23	1:B:283:GLY:H	1.69	0.56
1:A:109:GLY:HA2	1:A:200:ILE:HD13	1.88	0.56
1:B:56:ASP:O	1:B:60:ARG:HG3	2.06	0.56
1:B:268:LEU:O	1:B:272:LEU:HB2	2.06	0.55
1:B:218:TRP:O	3:B:404:HOH:O	2.18	0.55
1:B:217:ARG:O	1:B:217:ARG:HG2	2.06	0.55
1:A:233:VAL:N	3:A:401:HOH:O	2.23	0.54
1:A:4:ARG:O	1:A:299:GLN:NE2	2.37	0.54
1:B:108:PRO:HB3	1:B:132:PRO:HA	1.91	0.53
1:B:40:ARG:HA	1:B:87:LEU:HG	1.90	0.53
1:A:280:THR:HG22	1:A:285:THR:HG22	1.91	0.52
1:A:106:ILE:HG23	1:A:160:CYS:HB2	1.92	0.52
1:A:56:ASP:O	1:A:60:ARG:HG3	2.08	0.52

Continued on next page...

Continued from previous page...

Atom-1	Atom-2	Interatomic distance (Å)	Clash overlap (Å)
1:B:217:ARG:N	3:B:403:HOH:O	2.43	0.52
1:A:290:GLU:OE1	3:A:407:HOH:O	2.19	0.51
1:B:4:ARG:C	1:B:291:PHE:HZ	2.14	0.50
1:B:127:GLN:NE2	3:B:405:HOH:O	2.18	0.50
1:B:190:THR:OG1	1:B:191:ALA:N	2.42	0.50
1:A:131:ARG:HD2	1:A:137:LYS:HE3	1.93	0.50
1:B:95:ASN:OD1	1:B:97:LYS:N	2.44	0.50
1:A:62:SER:O	1:A:65:SER:OG	2.31	0.49
1:B:209:TYR:HE1	1:B:257:THR:HG21	1.77	0.49
1:B:31:TRP:CE2	1:B:95:ASN:HB2	2.48	0.49
1:B:211:ALA:HB2	1:B:281:ILE:HG23	1.93	0.49
1:B:211:ALA:O	1:B:216:ASP:N	2.46	0.49
1:B:225:THR:OG1	1:B:226:THR:N	2.46	0.48
1:A:27:LEU:HD21	1:A:42:VAL:HB	1.94	0.48
1:B:270:GLU:O	1:B:272:LEU:N	2.47	0.48
1:A:118:TYR:HD2	1:A:123:SER:HG	1.60	0.47
1:B:285:THR:O	1:B:285:THR:OG1	2.31	0.47
1:A:198:THR:HG22	1:A:238:ASN:OD1	2.14	0.47
1:B:163:HIS:NE2	2:B:301:FHR:O30	2.42	0.47
1:A:50:LEU:O	1:A:188:ARG:NE	2.47	0.47
1:B:213:ILE:HD11	1:B:253:LEU:HD22	1.97	0.46
1:B:223:PHE:CD1	1:B:224:THR:N	2.83	0.46
1:A:106:ILE:HD11	1:A:130:MET:HB2	1.97	0.46
1:B:83:GLN:OE1	1:B:88:ARG:HD3	2.17	0.45
1:B:113:SER:O	1:B:149:GLY:HA2	2.16	0.45
1:B:86:LEU:HG	1:B:179:GLY:HA2	1.98	0.44
1:A:201:THR:OG1	1:A:240:GLU:HG2	2.17	0.44
1:A:175:THR:HG22	1:A:181:PHE:HA	1.99	0.44
1:A:190:THR:O	1:A:192:GLN:HG3	2.17	0.44
1:A:207:TRP:CZ3	1:A:287:LEU:HA	2.52	0.44
1:A:86:LEU:HG	1:A:179:GLY:HA2	2.00	0.44
1:A:95:ASN:HB3	1:A:98:THR:OG1	2.17	0.44
1:B:120:GLY:O	3:B:407:HOH:O	2.21	0.44
1:B:74:GLN:O	3:B:406:HOH:O	2.20	0.44
1:B:280:THR:CG2	1:B:283:GLY:H	2.30	0.43
1:B:262:LEU:HD23	1:B:262:LEU:HA	1.79	0.43
1:A:6:MET:CE	1:B:124:GLY:HA3	2.47	0.43
1:A:6:MET:HE3	1:A:6:MET:HB3	1.89	0.43
1:B:17:MET:HG3	1:B:117:CYS:SG	2.58	0.43
1:B:92:ASP:OD1	1:B:93:THR:N	2.52	0.43
1:B:285:THR:O	3:B:408:HOH:O	2.21	0.43

Continued on next page...

Continued from previous page...

Atom-1	Atom-2	Interatomic distance (Å)	Clash overlap (Å)
1:A:282:LEU:HD23	1:A:282:LEU:HA	1.79	0.43
1:A:56:ASP:O	1:A:59:ILE:HG22	2.18	0.43
1:A:106:ILE:HG23	1:A:160:CYS:CB	2.48	0.43
1:A:113:SER:O	1:A:149:GLY:HA2	2.19	0.42
1:B:8:PHE:HE2	1:B:151:ASN:OD1	2.01	0.42
1:A:92:ASP:OD1	1:A:93:THR:N	2.52	0.42
1:A:111:THR:HG23	1:A:292:THR:HG23	2.02	0.42
1:B:207:TRP:CH2	1:B:281:ILE:HB	2.55	0.42
1:B:40:ARG:HD3	1:B:85:CYS:HA	2.00	0.42
1:B:257:THR:HG23	1:B:259:ILE:H	1.85	0.42
1:A:105:ARG:HD2	1:A:176:ASP:OD2	2.20	0.41
1:A:121:SER:HA	1:A:122:PRO:HD3	1.91	0.41
1:B:106:ILE:HD11	1:B:130:MET:CE	2.50	0.41
1:B:140:PHE:HB3	1:B:144:SER:OG	2.20	0.41
1:A:63:ASN:HB3	1:A:77:VAL:O	2.21	0.41
1:A:107:GLN:OE1	3:A:409:HOH:O	2.21	0.41
1:B:63:ASN:ND2	1:B:78:ILE:O	2.54	0.40
1:B:27:LEU:HD21	1:B:42:VAL:HB	2.03	0.40
1:A:131:ARG:NH2	1:A:289:ASP:OD1	2.54	0.40
1:B:209:TYR:O	1:B:213:ILE:HG13	2.21	0.40
1:B:270:GLU:C	1:B:272:LEU:N	2.74	0.40
1:A:188:ARG:HG2	1:A:190:THR:HG22	2.04	0.40
1:B:209:TYR:CD1	1:B:257:THR:HG21	2.56	0.40

There are no symmetry-related clashes.

5.3 Torsion angles [i](#)

5.3.1 Protein backbone [i](#)

In the following table, the Percentiles column shows the percent Ramachandran outliers of the chain as a percentile score with respect to all X-ray entries followed by that with respect to entries of similar resolution.

The Analysed column shows the number of residues for which the backbone conformation was analysed, and the total number of residues.

Mol	Chain	Analysed	Favoured	Allowed	Outliers	Percentiles
1	A	296/298 (99%)	289 (98%)	7 (2%)	0	100 100
1	B	296/298 (99%)	277 (94%)	17 (6%)	2 (1%)	19 11

Continued on next page...

Continued from previous page...

Mol	Chain	Analysed	Favoured	Allowed	Outliers	Percentiles
All	All	592/596 (99%)	566 (96%)	24 (4%)	2 (0%)	37 30

All (2) Ramachandran outliers are listed below:

Mol	Chain	Res	Type
1	B	277	ASN
1	B	271	LEU

5.3.2 Protein sidechains [i](#)

In the following table, the Percentiles column shows the percent sidechain outliers of the chain as a percentile score with respect to all X-ray entries followed by that with respect to entries of similar resolution.

The Analysed column shows the number of residues for which the sidechain conformation was analysed, and the total number of residues.

Mol	Chain	Analysed	Rotameric	Outliers	Percentiles
1	A	222/256 (87%)	219 (99%)	3 (1%)	62 63
1	B	222/256 (87%)	216 (97%)	6 (3%)	40 35
All	All	444/512 (87%)	435 (98%)	9 (2%)	50 47

All (9) residues with a non-rotameric sidechain are listed below:

Mol	Chain	Res	Type
1	A	131	ARG
1	A	196	THR
1	A	216	ASP
1	B	3	PHE
1	B	216	ASP
1	B	241	PRO
1	B	276	MET
1	B	280	THR
1	B	291	PHE

Sometimes sidechains can be flipped to improve hydrogen bonding and reduce clashes. All (1) such sidechains are listed below:

Mol	Chain	Res	Type
1	B	134	HIS

5.3.3 RNA [i](#)

There are no RNA molecules in this entry.

5.4 Non-standard residues in protein, DNA, RNA chains [i](#)

There are no non-standard protein/DNA/RNA residues in this entry.

5.5 Carbohydrates [i](#)

There are no oligosaccharides in this entry.

5.6 Ligand geometry [i](#)

2 ligands are modelled in this entry.

In the following table, the Counts columns list the number of bonds (or angles) for which Mogul statistics could be retrieved, the number of bonds (or angles) that are observed in the model and the number of bonds (or angles) that are defined in the Chemical Component Dictionary. The Link column lists molecule types, if any, to which the group is linked. The Z score for a bond length (or angle) is the number of standard deviations the observed value is removed from the expected value. A bond length (or angle) with $|Z| > 2$ is considered an outlier worth inspection. RMSZ is the root-mean-square of all Z scores of the bond lengths (or angles).

Mol	Type	Chain	Res	Link	Bond lengths			Bond angles		
					Counts	RMSZ	# Z > 2	Counts	RMSZ	# Z > 2
2	FHR	A	301	1	33,36,36	6.36	17 (51%)	40,49,49	2.51	12 (30%)
2	FHR	B	301	1	33,36,36	6.18	16 (48%)	40,49,49	1.68	11 (27%)

In the following table, the Chirals column lists the number of chiral outliers, the number of chiral centers analysed, the number of these observed in the model and the number defined in the Chemical Component Dictionary. Similar counts are reported in the Torsion and Rings columns. '-' means no outliers of that kind were identified.

Mol	Type	Chain	Res	Link	Chirals	Torsions	Rings
2	FHR	A	301	1	-	7/22/44/44	0/4/4/4
2	FHR	B	301	1	-	2/22/44/44	0/4/4/4

All (33) bond length outliers are listed below:

Mol	Chain	Res	Type	Atoms	Z	Observed(Å)	Ideal(Å)
2	A	301	FHR	C29-N28	25.86	1.61	1.33

Continued on next page...

Continued from previous page...

Mol	Chain	Res	Type	Atoms	Z	Observed(Å)	Ideal(Å)
2	B	301	FHR	C29-N28	25.08	1.60	1.33
2	A	301	FHR	C26-C27	11.39	1.70	1.53
2	B	301	FHR	C26-C27	11.29	1.70	1.53
2	A	301	FHR	C09-C10	9.72	1.58	1.41
2	B	301	FHR	C09-C10	9.39	1.58	1.41
2	A	301	FHR	C26-C25	-8.81	1.30	1.54
2	B	301	FHR	C26-C25	-8.80	1.30	1.54
2	A	301	FHR	C27-N28	-7.36	1.30	1.46
2	A	301	FHR	C06-C05	7.30	1.59	1.41
2	B	301	FHR	C27-N28	-7.13	1.31	1.46
2	B	301	FHR	C06-C05	6.84	1.58	1.41
2	A	301	FHR	C07-C06	6.83	1.52	1.36
2	A	301	FHR	C08-C09	6.75	1.52	1.36
2	B	301	FHR	C25-C29	6.55	1.60	1.52
2	B	301	FHR	C08-C09	6.44	1.51	1.36
2	B	301	FHR	C07-C06	6.40	1.51	1.36
2	A	301	FHR	C02-N12	6.07	1.47	1.34
2	B	301	FHR	C02-N12	6.03	1.47	1.34
2	A	301	FHR	C25-C29	5.93	1.59	1.52
2	B	301	FHR	C21-N22	5.44	1.46	1.34
2	A	301	FHR	C21-N22	5.08	1.45	1.34
2	A	301	FHR	C08-C07	4.22	1.49	1.38
2	B	301	FHR	C08-C07	4.00	1.48	1.38
2	A	301	FHR	O33-C21	-3.43	1.16	1.23
2	B	301	FHR	O33-C21	-3.22	1.17	1.23
2	A	301	FHR	C24-C25	3.11	1.60	1.53
2	A	301	FHR	C14-C15	2.91	1.57	1.53
2	A	301	FHR	O01-C02	-2.89	1.17	1.23
2	B	301	FHR	C24-C25	2.52	1.59	1.53
2	A	301	FHR	O30-C29	-2.34	1.18	1.23
2	B	301	FHR	O01-C02	-2.21	1.18	1.23
2	B	301	FHR	O30-C29	-2.09	1.19	1.23

All (23) bond angle outliers are listed below:

Mol	Chain	Res	Type	Atoms	Z	Observed(°)	Ideal(°)
2	A	301	FHR	C03-C02-N12	9.07	132.03	115.20
2	A	301	FHR	C13-N12-C02	5.92	136.09	121.60
2	A	301	FHR	O01-C02-N12	-4.46	114.25	122.45
2	A	301	FHR	C14-C13-N12	3.94	119.65	110.58
2	B	301	FHR	C15-C14-C13	-3.85	109.34	114.52
2	A	301	FHR	C27-N28-C29	-3.73	106.51	113.84

Continued on next page...

Continued from previous page...

Mol	Chain	Res	Type	Atoms	Z	Observed(°)	Ideal(°)
2	B	301	FHR	C27-N28-C29	-3.69	106.59	113.84
2	A	301	FHR	C21-C13-N12	-3.50	101.63	111.16
2	A	301	FHR	O01-C02-C03	-3.40	113.67	121.08
2	B	301	FHR	C03-C02-N12	3.25	121.23	115.20
2	B	301	FHR	C23-N22-C21	-3.10	117.43	123.15
2	A	301	FHR	O32-C31-C23	-2.99	116.95	124.78
2	B	301	FHR	O32-C31-C23	-2.96	117.03	124.78
2	A	301	FHR	C24-C25-C26	-2.81	106.96	117.31
2	B	301	FHR	C26-C27-N28	2.72	107.41	103.43
2	A	301	FHR	C26-C27-N28	2.64	107.30	103.43
2	A	301	FHR	C14-C13-C21	2.59	116.73	110.57
2	A	301	FHR	C04-C05-C10	2.36	108.33	106.27
2	B	301	FHR	C13-C21-N22	2.21	121.55	116.70
2	B	301	FHR	C24-C25-C26	-2.20	109.21	117.31
2	B	301	FHR	C26-C25-C29	2.15	105.68	102.88
2	B	301	FHR	C04-C05-C10	2.10	108.11	106.27
2	B	301	FHR	O33-C21-N22	-2.08	119.07	122.93

There are no chirality outliers.

All (9) torsion outliers are listed below:

Mol	Chain	Res	Type	Atoms
2	A	301	FHR	C03-C02-N12-C13
2	A	301	FHR	O01-C02-N12-C13
2	A	301	FHR	C13-C14-C15-C20
2	A	301	FHR	C13-C14-C15-C16
2	B	301	FHR	N12-C13-C14-C15
2	B	301	FHR	C21-C13-C14-C15
2	A	301	FHR	C14-C13-N12-C02
2	A	301	FHR	N12-C13-C21-N22
2	A	301	FHR	N12-C13-C21-O33

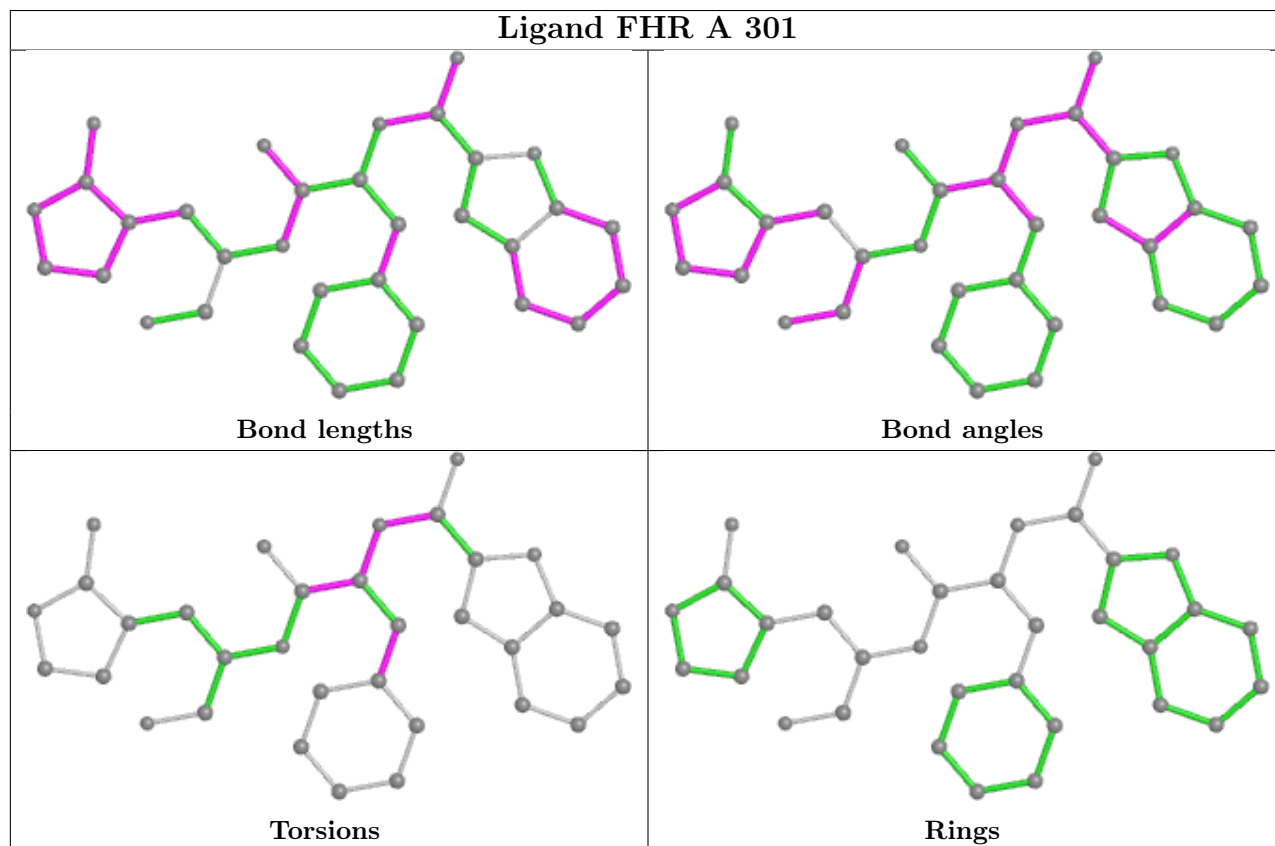
There are no ring outliers.

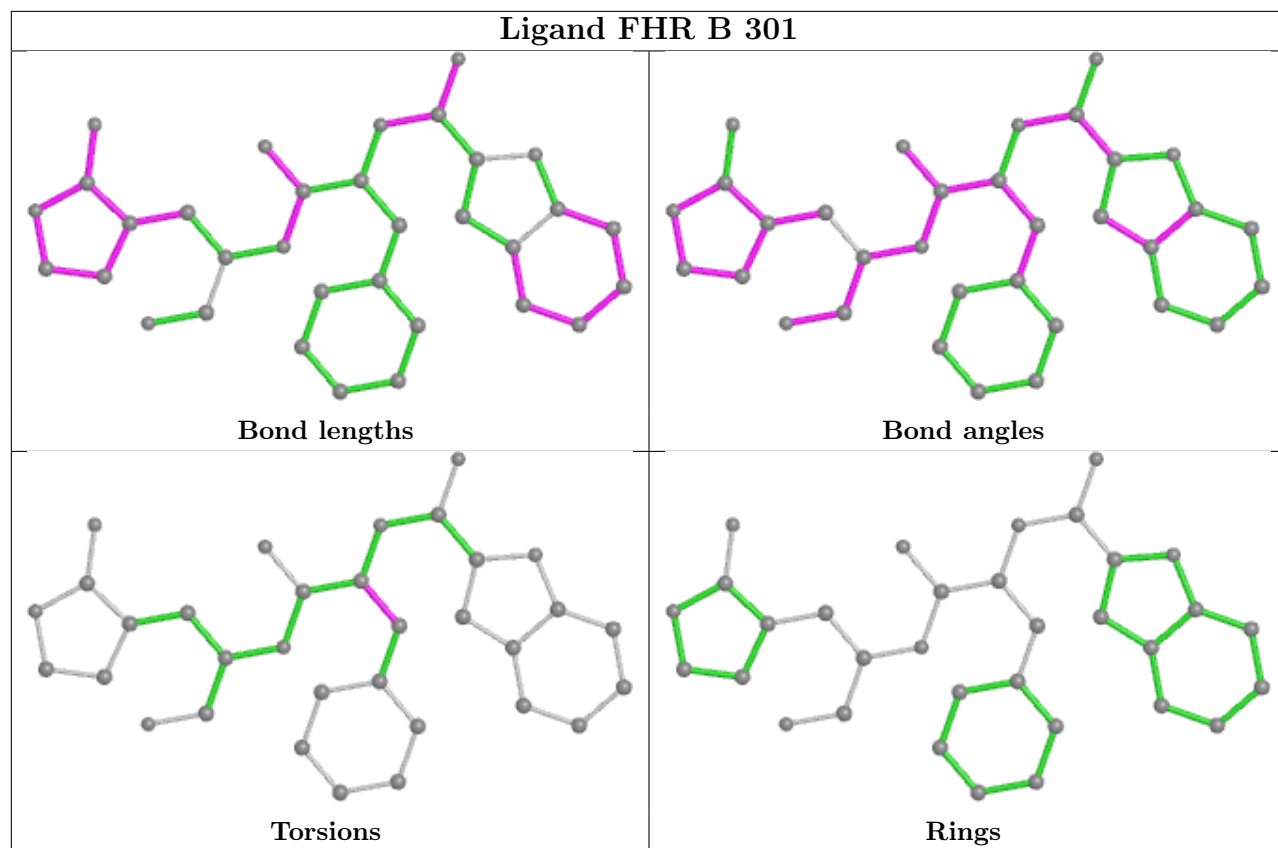
1 monomer is involved in 1 short contact:

Mol	Chain	Res	Type	Clashes	Symm-Clashes
2	B	301	FHR	1	0

The following is a two-dimensional graphical depiction of Mogul quality analysis of bond lengths, bond angles, torsion angles, and ring geometry for all instances of the Ligand of Interest. In addition, ligands with molecular weight > 250 and outliers as shown on the validation Tables will

also be included. For torsion angles, if less than 5% of the Mogul distribution of torsion angles is within 10 degrees of the torsion angle in question, then that torsion angle is considered an outlier. Any bond that is central to one or more torsion angles identified as an outlier by Mogul will be highlighted in the graph. For rings, the root-mean-square deviation (RMSD) between the ring in question and similar rings identified by Mogul is calculated over all ring torsion angles. If the average RMSD is greater than 60 degrees and the minimal RMSD between the ring in question and any Mogul-identified rings is also greater than 60 degrees, then that ring is considered an outlier. The outliers are highlighted in purple. The color gray indicates Mogul did not find sufficient equivalents in the CSD to analyse the geometry.





5.7 Other polymers [i](#)

There are no such residues in this entry.

5.8 Polymer linkage issues [i](#)

There are no chain breaks in this entry.

6 Fit of model and data

6.1 Protein, DNA and RNA chains

In the following table, the column labelled ‘#RSRZ > 2’ contains the number (and percentage) of RSRZ outliers, followed by percent RSRZ outliers for the chain as percentile scores relative to all X-ray entries and entries of similar resolution. The OWAB column contains the minimum, median, 95th percentile and maximum values of the occupancy-weighted average B-factor per residue. The column labelled ‘Q < 0.9’ lists the number of (and percentage) of residues with an average occupancy less than 0.9.

Mol	Chain	Analysed	<RSRZ>	#RSRZ>2	OWAB(Å ²)	Q<0.9
1	A	298/298 (100%)	0.83	29 (9%) 15 16	22, 40, 56, 63	0
1	B	298/298 (100%)	1.64	80 (26%) 2 1	22, 39, 74, 92	0
All	All	596/596 (100%)	1.23	109 (18%) 4 3	22, 39, 64, 92	0

All (109) RSRZ outliers are listed below:

Mol	Chain	Res	Type	RSRZ
1	B	282	LEU	13.8
1	B	271	LEU	10.7
1	B	278	GLY	10.2
1	B	274	ASN	9.9
1	B	214	ASN	8.9
1	B	280	THR	8.6
1	B	218	TRP	8.4
1	B	279	ARG	7.9
1	B	284	SER	7.9
1	B	213	ILE	7.7
1	B	281	ILE	7.4
1	B	283	GLY	7.4
1	B	219	PHE	6.5
1	B	285	THR	6.4
1	B	272	LEU	6.4
1	B	294	PHE	6.1
1	B	277	ASN	5.9
1	B	275	GLY	5.9
1	B	273	GLN	5.8
1	B	270	GLU	5.8
1	B	216	ASP	5.7
1	B	228	ASN	5.7
1	B	3	PHE	5.4
1	B	223	PHE	5.4

Continued on next page...

Continued from previous page...

Mol	Chain	Res	Type	RSRZ
1	B	224	THR	5.3
1	B	220	LEU	5.1
1	B	276	MET	4.9
1	B	226	THR	4.5
1	B	48	ASP	4.4
1	B	229	ASP	4.2
1	B	232	LEU	4.2
1	B	222	ARG	4.1
1	B	46	ALA	4.1
1	B	215	GLY	4.0
1	B	49	MET	4.0
1	B	211	ALA	3.9
1	B	286	ILE	3.9
1	B	212	VAL	3.9
1	B	221	ASN	3.7
1	B	2	GLY	3.7
1	B	78	ILE	3.6
1	A	2	GLY	3.6
1	B	237	TYR	3.6
1	A	75	LEU	3.5
1	B	269	LYS	3.5
1	B	72	ASN	3.5
1	B	64	HIS	3.4
1	B	291	PHE	3.4
1	B	77	VAL	3.4
1	B	51	ASN	3.4
1	B	191	ALA	3.3
1	B	225	THR	3.3
1	B	154	TYR	3.2
1	B	190	THR	3.2
1	A	50	LEU	3.2
1	B	235	MET	3.2
1	A	79	GLY	3.1
1	B	236	LYS	3.1
1	A	46	ALA	3.0
1	B	73	VAL	2.9
1	A	224	THR	2.9
1	B	31	TRP	2.8
1	B	217	ARG	2.8
1	B	297	VAL	2.8
1	B	50	LEU	2.8
1	A	233	VAL	2.8

Continued on next page...

Continued from previous page...

Mol	Chain	Res	Type	RSRZ
1	A	294	PHE	2.7
1	B	299	GLN	2.7
1	B	227	LEU	2.6
1	A	73	VAL	2.6
1	B	233	VAL	2.6
1	A	214	ASN	2.6
1	A	228	ASN	2.6
1	B	298	ARG	2.6
1	A	55	GLU	2.6
1	A	276	MET	2.5
1	A	63	ASN	2.5
1	B	66	PHE	2.5
1	A	74	GLN	2.5
1	A	93	THR	2.5
1	B	47	GLU	2.4
1	A	223	PHE	2.4
1	B	94	SER	2.4
1	B	57	LEU	2.4
1	B	44	CYS	2.4
1	A	31	TRP	2.4
1	B	106	ILE	2.4
1	B	79	GLY	2.4
1	B	55	GLU	2.4
1	A	277	ASN	2.3
1	B	24	THR	2.3
1	B	45	THR	2.3
1	A	65	SER	2.3
1	A	240	GLU	2.3
1	A	64	HIS	2.3
1	A	229	ASP	2.3
1	A	258	GLY	2.3
1	A	154	TYR	2.3
1	B	25	THR	2.3
1	B	189	GLN	2.2
1	B	62	SER	2.2
1	A	215	GLY	2.2
1	A	237	TYR	2.1
1	B	63	ASN	2.1
1	A	278	GLY	2.1
1	B	76	ARG	2.1
1	B	197	ASP	2.1
1	A	230	PHE	2.1

Continued on next page...

Continued from previous page...

Mol	Chain	Res	Type	RSRZ
1	B	87	LEU	2.0

6.2 Non-standard residues in protein, DNA, RNA chains [i](#)

There are no non-standard protein/DNA/RNA residues in this entry.

6.3 Carbohydrates [i](#)

There are no monosaccharides in this entry.

6.4 Ligands [i](#)

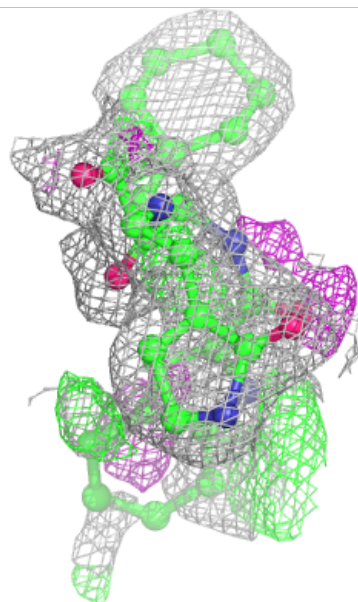
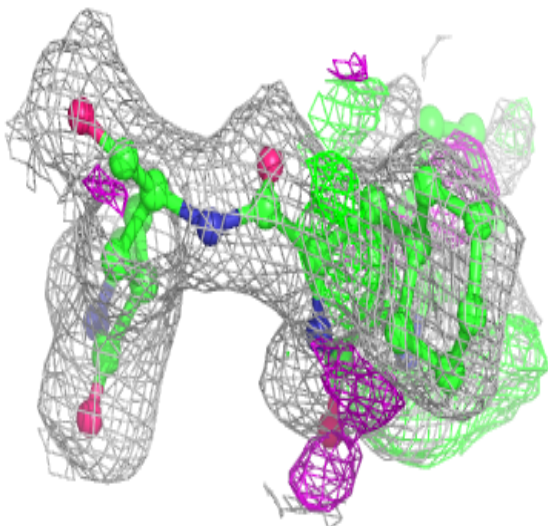
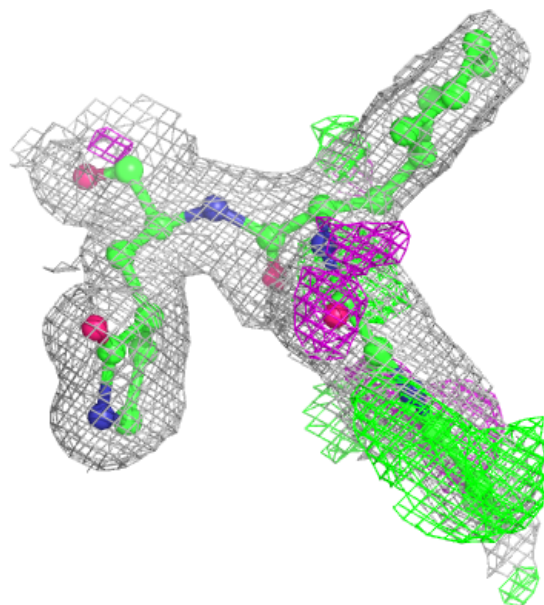
In the following table, the Atoms column lists the number of modelled atoms in the group and the number defined in the chemical component dictionary. The B-factors column lists the minimum, median, 95th percentile and maximum values of B factors of atoms in the group. The column labelled 'Q< 0.9' lists the number of atoms with occupancy less than 0.9.

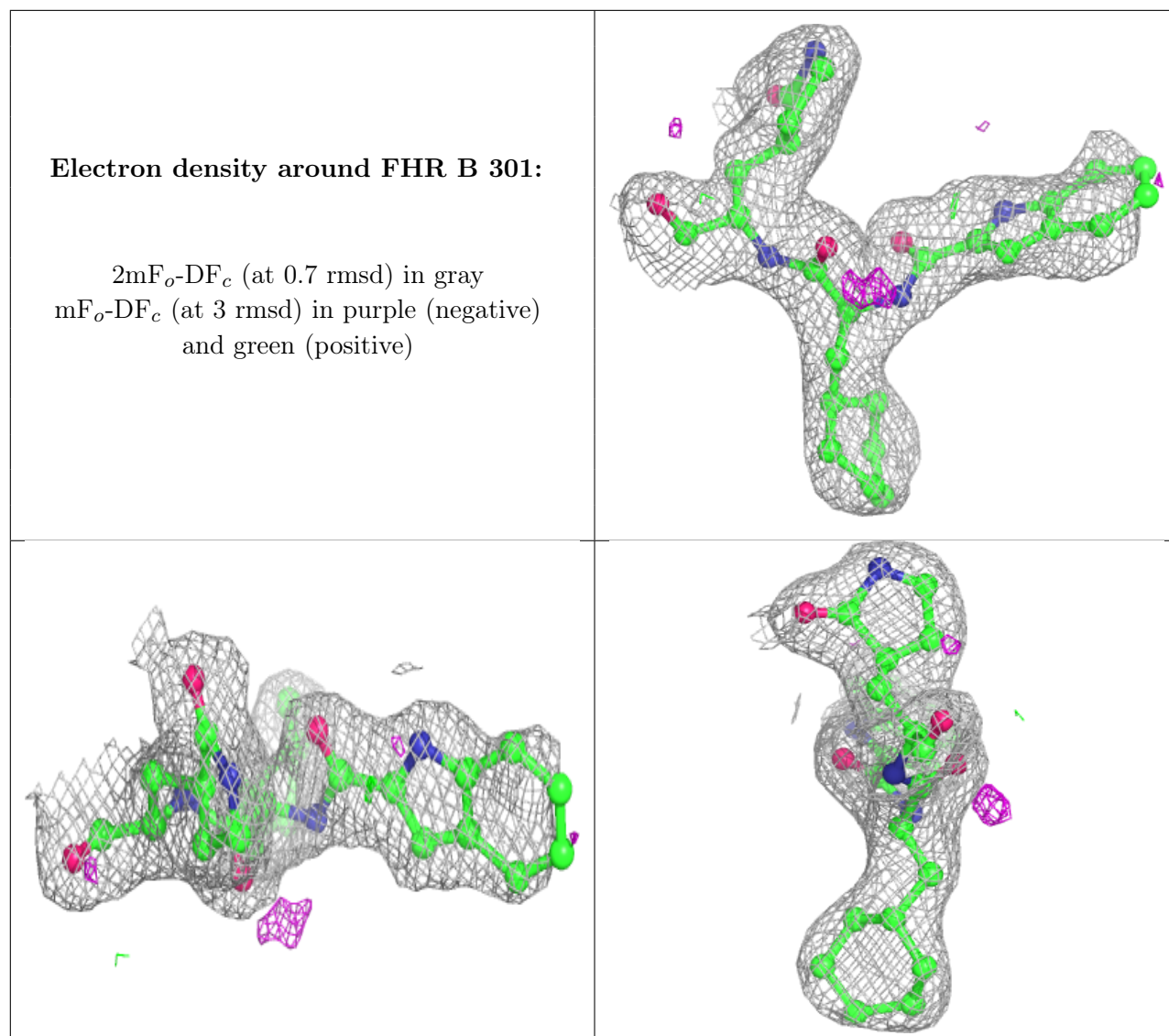
Mol	Type	Chain	Res	Atoms	RSCC	RSR	B-factors(Å ²)	Q<0.9
2	FHR	A	301	33/33	0.81	0.18	25,36,53,59	0
2	FHR	B	301	33/33	0.92	0.11	31,40,55,61	0

The following is a graphical depiction of the model fit to experimental electron density of all instances of the Ligand of Interest. In addition, ligands with molecular weight > 250 and outliers as shown on the geometry validation Tables will also be included. Each fit is shown from different orientation to approximate a three-dimensional view.

Electron density around FHR A 301:

$2mF_o-DF_c$ (at 0.7 rmsd) in gray
 mF_o-DF_c (at 3 rmsd) in purple (negative)
and green (positive)





6.5 Other polymers [i](#)

There are no such residues in this entry.