



Full wwPDB X-ray Structure Validation Report ⓘ

Aug 21, 2020 – 09:05 PM BST

PDB ID : 6Y7F
Title : Crystal structure of human ELOVL fatty acid elongase 7 (ELOVL7)
Authors : Nie, L.; Pike, A.C.W.; Bushell, S.R.; Chu, A.; Cole, V.; Speedman, D.; Rodstrom, K.E.J.; Kupinska, K.; Shrestha, L.; Mukhopadhyay, S.M.M.; Burgess-Brown, N.A.; Love, J.; Edwards, A.M.; Arrowsmith, C.H.; Bountra, C.; Carpenter, E.P.; Structural Genomics Consortium (SGC)
Deposited on : 2020-02-28
Resolution : 2.05 Å(reported)

This is a Full wwPDB X-ray Structure Validation Report for a publicly released PDB entry.

We welcome your comments at validation@mail.wwpdb.org

A user guide is available at

<https://www.wwpdb.org/validation/2017/XrayValidationReportHelp>

with specific help available everywhere you see the ⓘ symbol.

The following versions of software and data (see [references ⓘ](#)) were used in the production of this report:

MolProbity : 4.02b-467
Mogul : 1.8.5 (274361), CSD as541be (2020)
Xtriage (Phenix) : 1.13
EDS : 2.13.1
buster-report : 1.1.7 (2018)
Percentile statistics : 20191225.v01 (using entries in the PDB archive December 25th 2019)
Refmac : 5.8.0158
CCP4 : 7.0.044 (Gargrove)
Ideal geometry (proteins) : Engh & Huber (2001)
Ideal geometry (DNA, RNA) : Parkinson et al. (1996)
Validation Pipeline (wwPDB-VP) : 2.13.1

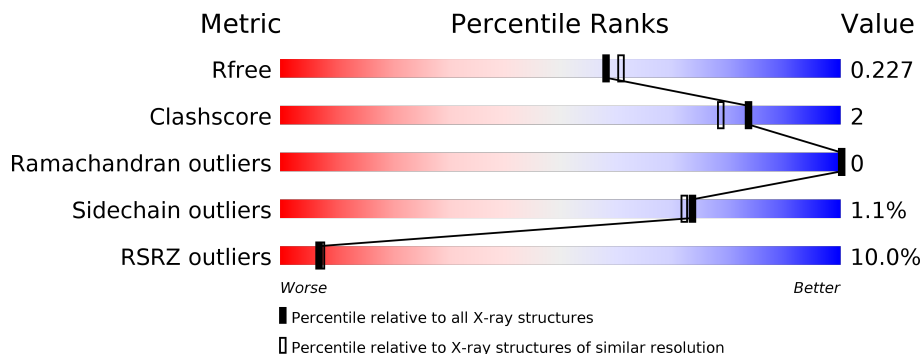
1 Overall quality at a glance

The following experimental techniques were used to determine the structure:

X-RAY DIFFRACTION

The reported resolution of this entry is 2.05 Å.

Percentile scores (ranging between 0-100) for global validation metrics of the entry are shown in the following graphic. The table shows the number of entries on which the scores are based.



Metric	Whole archive (#Entries)	Similar resolution (#Entries, resolution range(Å))
R_{free}	130704	2684 (2.08-2.04)
Clashscore	141614	2801 (2.08-2.04)
Ramachandran outliers	138981	2768 (2.08-2.04)
Sidechain outliers	138945	2768 (2.08-2.04)
RSRZ outliers	127900	2646 (2.08-2.04)

The table below summarises the geometric issues observed across the polymeric chains and their fit to the electron density. The red, orange, yellow and green segments on the lower bar indicate the fraction of residues that contain outliers for ≥ 3 , 2, 1 and 0 types of geometric quality criteria respectively. A grey segment represents the fraction of residues that are not modelled. The numeric value for each fraction is indicated below the corresponding segment, with a dot representing fractions $\leq 5\%$. The upper red bar (where present) indicates the fraction of residues that have poor fit to the electron density. The numeric value is given above the bar.

Mol	Chain	Length	Quality of chain
1	A	288	
1	B	288	

2 Entry composition i

There are 5 unique types of molecules in this entry. The entry contains 4665 atoms, of which 0 are hydrogens and 0 are deuteriums.

In the tables below, the ZeroOcc column contains the number of atoms modelled with zero occupancy, the AltConf column contains the number of residues with at least one atom in alternate conformation and the Trace column contains the number of residues modelled with at most 2 atoms.

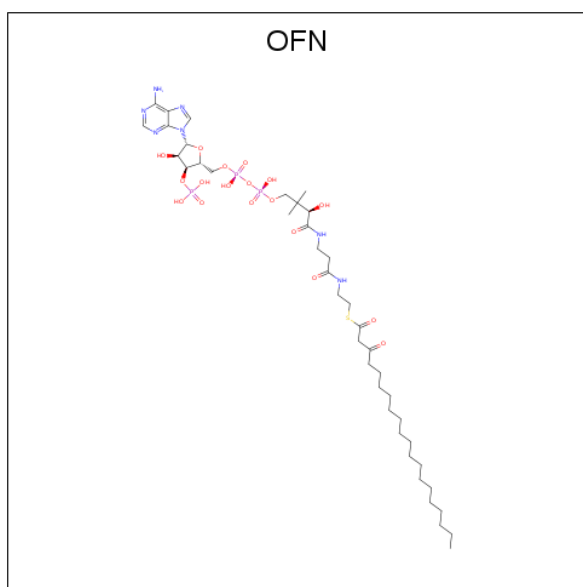
- Molecule 1 is a protein called Elongation of very long chain fatty acids protein 7.

Mol	Chain	Residues	Atoms					ZeroOcc	AltConf	Trace
			Total	C	N	O	S			
1	A	254	2127	1447	326	338	16	0	3	0
1	B	256	2133	1451	328	338	16	0	1	0

There are 14 discrepancies between the modelled and reference sequences:

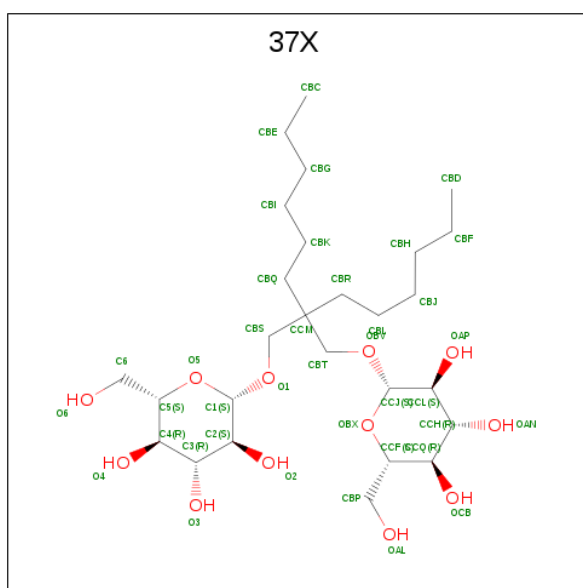
Chain	Residue	Modelled	Actual	Comment	Reference
A	282	ALA	-	expression tag	UNP A1L3X0
A	283	GLU	-	expression tag	UNP A1L3X0
A	284	ASN	-	expression tag	UNP A1L3X0
A	285	LEU	-	expression tag	UNP A1L3X0
A	286	TYR	-	expression tag	UNP A1L3X0
A	287	PHE	-	expression tag	UNP A1L3X0
A	288	GLN	-	expression tag	UNP A1L3X0
B	282	ALA	-	expression tag	UNP A1L3X0
B	283	GLU	-	expression tag	UNP A1L3X0
B	284	ASN	-	expression tag	UNP A1L3X0
B	285	LEU	-	expression tag	UNP A1L3X0
B	286	TYR	-	expression tag	UNP A1L3X0
B	287	PHE	-	expression tag	UNP A1L3X0
B	288	GLN	-	expression tag	UNP A1L3X0

- Molecule 2 is {S}-[2-[3-[(2 {R})-4-[[[(2 {R}),3 {S},4 {R}),5 {R}]-5-(6-aminopurin-9-yl)-4-oxidanyl-3-phosphonoxy-oxolan-2-yl]methoxy-oxidanyl-phosphoryl]oxy-oxidanyl-phosphoryl]oxy-3,3-dimethyl-2-oxidanyl-butanoyl]amino]propanoylamino]ethyl] 3-oxidanylidenei cosanethioate (three-letter code: OFN) (formula: C₄₁H₇₂N₇O₁₈P₃S) (labeled as "Ligand of Interest" by author).



Mol	Chain	Residues	Atoms					ZeroOcc	AltConf	
			Total	C	N	O	P			S
2	A	1	70	41	7	18	3	1	0	0
2	B	1	70	41	7	18	3	1	0	0

- Molecule 3 is Octyl Glucose Neopentyl Glycol (three-letter code: 37X) (formula: $C_{27}H_{52}O_{12}$).



Mol	Chain	Residues	Atoms			ZeroOcc	AltConf
			Total	C	O		
3	A	1	39	27	12	0	0
3	A	1	39	27	12	0	0

Continued on next page...

Continued from previous page...

Mol	Chain	Residues	Atoms			ZeroOcc	AltConf
3	A	1	Total	C	O	0	0
			34	22	12		
3	B	1	Total	C	O	0	0
			39	27	12		

- Molecule 4 is CHLORIDE ION (three-letter code: CL) (formula: Cl).

Mol	Chain	Residues	Atoms		ZeroOcc	AltConf
4	B	1	Total	Cl	0	0
			1	1		
4	A	1	Total	Cl	0	0
			1	1		

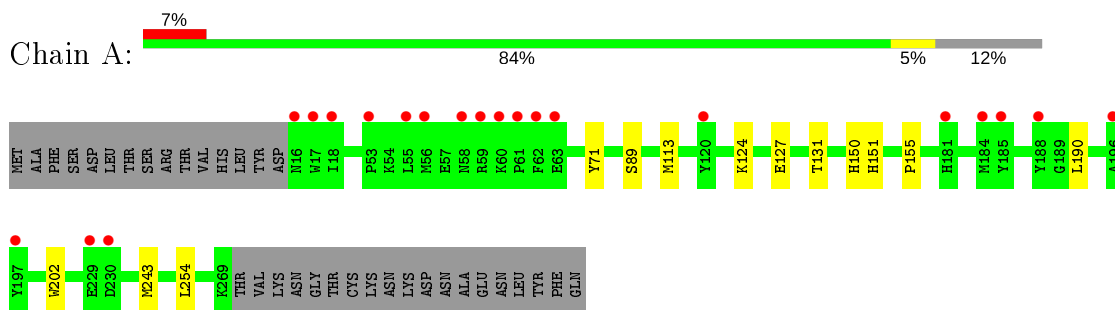
- Molecule 5 is water.

Mol	Chain	Residues	Atoms		ZeroOcc	AltConf
5	A	61	Total	O	0	0
			61	61		
5	B	51	Total	O	0	0
			51	51		

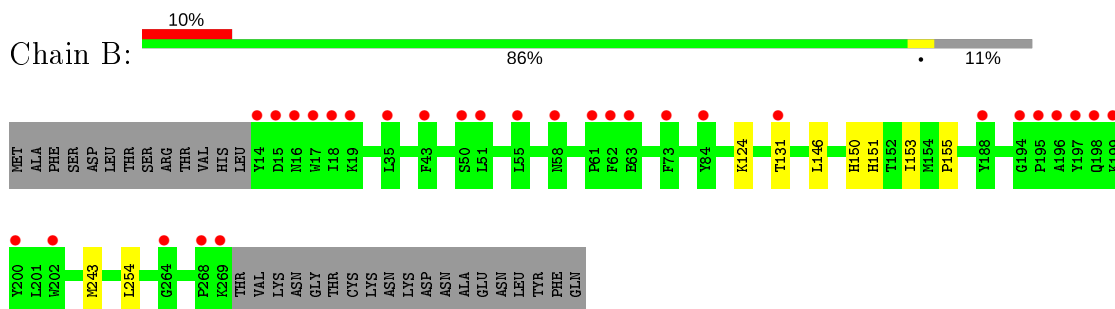
3 Residue-property plots [i](#)

These plots are drawn for all protein, RNA, DNA and oligosaccharide chains in the entry. The first graphic for a chain summarises the proportions of the various outlier classes displayed in the second graphic. The second graphic shows the sequence view annotated by issues in geometry and electron density. Residues are color-coded according to the number of geometric quality criteria for which they contain at least one outlier: green = 0, yellow = 1, orange = 2 and red = 3 or more. A red dot above a residue indicates a poor fit to the electron density ($RSRZ > 2$). Stretches of 2 or more consecutive residues without any outlier are shown as a green connector. Residues present in the sample, but not in the model, are shown in grey.

- Molecule 1: Elongation of very long chain fatty acids protein 7



- Molecule 1: Elongation of very long chain fatty acids protein 7



4 Data and refinement statistics

Property	Value	Source
Space group	P 1 21 1	Depositor
Cell constants a, b, c, α , β , γ	63.23Å 72.46Å 112.04Å 90.00° 100.03° 90.00°	Depositor
Resolution (Å)	28.68 – 2.05 28.68 – 2.05	Depositor EDS
% Data completeness (in resolution range)	58.7 (28.68-2.05) 58.7 (28.68-2.05)	Depositor EDS
R_{merge}	0.10	Depositor
R_{sym}	(Not available)	Depositor
$\langle I/\sigma(I) \rangle$ ¹	1.38 (at 2.04Å)	Xtrriage
Refinement program	BUSTER 2.10.3	Depositor
R, R_{free}	0.210 , 0.226 0.209 , 0.227	Depositor DCC
R_{free} test set	1765 reflections (4.81%)	wwPDB-VP
Wilson B-factor (Å ²)	34.9	Xtrriage
Anisotropy	0.059	Xtrriage
Bulk solvent k_{sol} (e/Å ³), B_{sol} (Å ²)	0.39 , 70.8	EDS
L-test for twinning ²	$\langle L \rangle = 0.50$, $\langle L^2 \rangle = 0.33$	Xtrriage
Estimated twinning fraction	No twinning to report.	Xtrriage
F_o, F_c correlation	0.92	EDS
Total number of atoms	4665	wwPDB-VP
Average B, all atoms (Å ²)	43.0	wwPDB-VP

Xtrriage's analysis on translational NCS is as follows: *The largest off-origin peak in the Patterson function is 5.44% of the height of the origin peak. No significant pseudotranslation is detected.*

¹ Intensities estimated from amplitudes.

² Theoretical values of $\langle |L| \rangle$, $\langle L^2 \rangle$ for acentric reflections are 0.5, 0.333 respectively for untwinned datasets, and 0.375, 0.2 for perfectly twinned datasets.

5 Model quality [i](#)

5.1 Standard geometry [i](#)

Bond lengths and bond angles in the following residue types are not validated in this section: 37X, OFN, CL

The Z score for a bond length (or angle) is the number of standard deviations the observed value is removed from the expected value. A bond length (or angle) with $|Z| > 5$ is considered an outlier worth inspection. RMSZ is the root-mean-square of all Z scores of the bond lengths (or angles).

Mol	Chain	Bond lengths		Bond angles	
		RMSZ	# Z >5	RMSZ	# Z >5
1	A	0.43	0/2218	0.52	0/3017
1	B	0.44	0/2218	0.52	0/3019
All	All	0.43	0/4436	0.52	0/6036

There are no bond length outliers.

There are no bond angle outliers.

There are no chirality outliers.

There are no planarity outliers.

5.2 Too-close contacts [i](#)

In the following table, the Non-H and H(model) columns list the number of non-hydrogen atoms and hydrogen atoms in the chain respectively. The H(added) column lists the number of hydrogen atoms added and optimized by MolProbity. The Clashes column lists the number of clashes within the asymmetric unit, whereas Symm-Clashes lists symmetry related clashes.

Mol	Chain	Non-H	H(model)	H(added)	Clashes	Symm-Clashes
1	A	2127	0	2079	12	0
1	B	2133	0	2073	8	0
2	A	70	0	0	2	0
2	B	70	0	0	2	0
3	A	112	0	143	7	0
3	B	39	0	52	0	0
4	A	1	0	0	0	0
4	B	1	0	0	0	0
5	A	61	0	0	0	0
5	B	51	0	0	0	0
All	All	4665	0	4347	21	0

The all-atom clashscore is defined as the number of clashes found per 1000 atoms (including hydrogen atoms). The all-atom clashscore for this structure is 2.

All (21) close contacts within the same asymmetric unit are listed below, sorted by their clash magnitude.

Atom-1	Atom-2	Interatomic distance (Å)	Clash overlap (Å)
1:A:202:TRP:HE1	3:A:304:37X:H49	1.54	0.73
2:B:301:OFN:S	2:B:301:OFN:C24	2.80	0.70
3:A:302:37X:H44	3:A:303:37X:H37	1.75	0.68
2:A:301:OFN:S	2:A:301:OFN:C24	2.82	0.67
1:A:254:LEU:HD13	1:B:243:MET:CE	2.25	0.67
1:A:254:LEU:HD13	1:B:243:MET:HE1	1.83	0.61
3:A:302:37X:H12	3:A:303:37X:H52	1.83	0.60
1:A:254:LEU:CD1	1:B:243:MET:HE3	2.37	0.54
3:A:302:37X:H43	3:A:303:37X:O2	2.08	0.53
1:A:254:LEU:CD1	1:B:243:MET:CE	2.90	0.50
1:A:89:SER:HB3	1:A:113:MET:HB2	1.93	0.49
1:A:243:MET:CE	1:B:254:LEU:HD13	2.44	0.48
1:B:124:LYS:HB2	1:B:155:PRO:HB3	1.97	0.47
1:A:150:HIS:CE1	2:A:301:OFN:C23	3.00	0.45
1:A:124:LYS:HB2	1:A:155:PRO:HB3	1.98	0.44
1:B:150:HIS:CE1	2:B:301:OFN:C23	3.01	0.42
1:B:146:LEU:C	1:B:146:LEU:HD23	2.41	0.41
1:A:190:LEU:HD11	3:A:303:37X:H25	2.02	0.41
3:A:303:37X:OAP	3:A:304:37X:H8	2.21	0.41
1:A:71:TYR:OH	1:A:127:GLU:HA	2.22	0.41
1:A:202:TRP:NE1	3:A:304:37X:H49	2.29	0.40

There are no symmetry-related clashes.

5.3 Torsion angles [i](#)

5.3.1 Protein backbone [i](#)

In the following table, the Percentiles column shows the percent Ramachandran outliers of the chain as a percentile score with respect to all X-ray entries followed by that with respect to entries of similar resolution.

The Analysed column shows the number of residues for which the backbone conformation was analysed, and the total number of residues.

Mol	Chain	Analysed	Favoured	Allowed	Outliers	Percentiles
1	A	255/288 (88%)	244 (96%)	11 (4%)	0	100 100

Continued on next page...

Continued from previous page...

Mol	Chain	Analysed	Favoured	Allowed	Outliers	Percentiles	
1	B	255/288 (88%)	246 (96%)	9 (4%)	0	100	100
All	All	510/576 (88%)	490 (96%)	20 (4%)	0	100	100

There are no Ramachandran outliers to report.

5.3.2 Protein sidechains [i](#)

In the following table, the Percentiles column shows the percent sidechain outliers of the chain as a percentile score with respect to all X-ray entries followed by that with respect to entries of similar resolution.

The Analysed column shows the number of residues for which the sidechain conformation was analysed, and the total number of residues.

Mol	Chain	Analysed	Rotameric	Outliers	Percentiles	
1	A	222/260 (85%)	220 (99%)	2 (1%)	78	78
1	B	220/260 (85%)	217 (99%)	3 (1%)	67	64
All	All	442/520 (85%)	437 (99%)	5 (1%)	73	72

All (5) residues with a non-rotameric sidechain are listed below:

Mol	Chain	Res	Type
1	A	131	THR
1	A	151	HIS
1	B	131	THR
1	B	151	HIS
1	B	153	ILE

Some sidechains can be flipped to improve hydrogen bonding and reduce clashes. All (1) such sidechains are listed below:

Mol	Chain	Res	Type
1	A	72	ASN

5.3.3 RNA [i](#)

There are no RNA molecules in this entry.

5.4 Non-standard residues in protein, DNA, RNA chains [i](#)

There are no non-standard protein/DNA/RNA residues in this entry.

5.5 Carbohydrates [i](#)

There are no monosaccharides in this entry.

5.6 Ligand geometry [i](#)

Of 8 ligands modelled in this entry, 2 are monoatomic - leaving 6 for Mogul analysis.

In the following table, the Counts columns list the number of bonds (or angles) for which Mogul statistics could be retrieved, the number of bonds (or angles) that are observed in the model and the number of bonds (or angles) that are defined in the Chemical Component Dictionary. The Link column lists molecule types, if any, to which the group is linked. The Z score for a bond length (or angle) is the number of standard deviations the observed value is removed from the expected value. A bond length (or angle) with $|Z| > 2$ is considered an outlier worth inspection. RMSZ is the root-mean-square of all Z scores of the bond lengths (or angles).

Mol	Type	Chain	Res	Link	Bond lengths			Bond angles		
					Counts	RMSZ	# Z > 2	Counts	RMSZ	# Z > 2
3	37X	A	303	-	40,40,40	0.31	0	52,54,54	1.07	3 (5%)
3	37X	A	302	-	40,40,40	0.25	0	52,54,54	1.22	7 (13%)
2	OFN	B	301	1	63,72,72	0.59	1 (1%)	75,99,99	0.98	2 (2%)
2	OFN	A	301	1	63,72,72	0.60	1 (1%)	75,99,99	1.00	2 (2%)
3	37X	B	302	-	40,40,40	0.23	0	52,54,54	0.90	2 (3%)
3	37X	A	304	-	35,35,40	0.22	0	45,49,54	0.59	1 (2%)

In the following table, the Chirals column lists the number of chiral outliers, the number of chiral centers analysed, the number of these observed in the model and the number defined in the Chemical Component Dictionary. Similar counts are reported in the Torsion and Rings columns. '-' means no outliers of that kind were identified.

Mol	Type	Chain	Res	Link	Chirals	Torsions	Rings
3	37X	A	303	-	-	8/30/70/70	0/2/2/2
3	37X	A	302	-	-	11/30/70/70	0/2/2/2
2	OFN	B	301	1	-	17/67/88/88	0/3/3/3
2	OFN	A	301	1	-	18/67/88/88	0/3/3/3
3	37X	B	302	-	-	6/30/70/70	0/2/2/2
3	37X	A	304	-	-	1/23/63/70	0/2/2/2

All (2) bond length outliers are listed below:

Mol	Chain	Res	Type	Atoms	Z	Observed(Å)	Ideal(Å)
2	B	301	OFN	C-C23	2.36	1.59	1.50
2	A	301	OFN	C-C23	2.29	1.59	1.50

All (17) bond angle outliers are listed below:

Mol	Chain	Res	Type	Atoms	Z	Observed(°)	Ideal(°)
2	B	301	OFN	C23-C-C1	5.97	124.39	112.52
2	A	301	OFN	C23-C-C1	5.93	124.31	112.52
3	B	302	37X	CBS-O1-C1	4.67	125.51	113.36
3	A	303	37X	CBT-OBV-CCJ	4.21	124.30	113.36
3	A	302	37X	CBS-O1-C1	3.98	123.71	113.36
3	A	302	37X	CBT-OBV-CCJ	3.44	122.31	113.36
3	A	303	37X	CBQ-CCM-CBS	-3.24	101.74	109.40
3	A	304	37X	CBS-O1-C1	3.05	121.30	113.36
3	B	302	37X	CBT-OBV-CCJ	3.02	121.21	113.36
3	A	302	37X	O5-C1-O1	2.65	116.25	109.97
2	A	301	OFN	C21-C20-N5	2.56	124.25	120.35
3	A	303	37X	OBX-CCJ-OBV	2.49	115.86	109.97
2	B	301	OFN	C21-C20-N5	2.41	124.02	120.35
3	A	302	37X	O3-C3-C4	2.38	115.86	110.35
3	A	302	37X	C1-C2-C3	-2.12	105.59	110.00
3	A	302	37X	O3-C3-C2	2.02	115.01	110.35
3	A	302	37X	OBX-CCJ-OBV	2.02	114.75	109.97

There are no chirality outliers.

All (61) torsion outliers are listed below:

Mol	Chain	Res	Type	Atoms
3	A	303	37X	O1-CBS-CCM-CBQ
3	A	303	37X	O1-CBS-CCM-CBR
3	A	303	37X	OBX-CCJ-OBV-CBT
3	A	302	37X	O5-C1-O1-CBS
3	A	302	37X	OBV-CBT-CCM-CBQ
3	A	302	37X	OBV-CBT-CCM-CBR
3	A	302	37X	OBX-CCJ-OBV-CBT
2	B	301	OFN	C1-C-C23-C24
2	B	301	OFN	C1-C-C23-O17
2	B	301	OFN	C-C1-S-C2
2	B	301	OFN	S-C2-C3-N
2	A	301	OFN	C1-C-C23-C24
2	A	301	OFN	C1-C-C23-O17

Continued on next page...

Continued from previous page...

Mol	Chain	Res	Type	Atoms
2	A	301	OFN	C-C1-S-C2
2	A	301	OFN	S-C2-C3-N
2	A	301	OFN	O2-C7-C8-O3
3	B	302	37X	O5-C1-O1-CBS
3	B	302	37X	OBX-CCJ-OBV-CBT
3	A	302	37X	O5-C5-C6-O6
3	A	303	37X	O1-CBS-CCM-CBT
3	A	303	37X	O5-C5-C6-O6
3	A	302	37X	C4-C5-C6-O6
3	A	303	37X	CCL-CCJ-OBV-CBT
3	A	303	37X	C4-C5-C6-O6
2	A	301	OFN	C24-C25-C26-C27
3	A	302	37X	C2-C1-O1-CBS
3	B	302	37X	C2-C1-O1-CBS
3	B	302	37X	CCL-CCJ-OBV-CBT
2	A	301	OFN	C27-C28-C29-C30
2	B	301	OFN	C24-C25-C26-C27
2	B	301	OFN	C4-C5-C6-N1
2	A	301	OFN	C4-C5-C6-N1
2	B	301	OFN	C28-C29-C30-C31
2	B	301	OFN	N-C4-C5-C6
2	A	301	OFN	N-C4-C5-C6
3	A	302	37X	CBC-CBE-CBG-CBI
2	A	301	OFN	C23-C-C1-O
2	B	301	OFN	O1-C4-C5-C6
3	B	302	37X	CBG-CBI-CBK-CBQ
2	A	301	OFN	O1-C4-C5-C6
2	B	301	OFN	C27-C28-C29-C30
2	B	301	OFN	O-C1-S-C2
2	A	301	OFN	O-C1-S-C2
2	B	301	OFN	C12-O4-P-O7
2	B	301	OFN	C23-C-C1-O
3	A	302	37X	OAL-CBP-CCF-CCQ
2	B	301	OFN	O2-C7-C8-O3
2	A	301	OFN	C14-C13-O10-P1
3	A	302	37X	OBV-CBT-CCM-CBS
2	A	301	OFN	C36-C37-C38-C39
2	A	301	OFN	C35-C36-C37-C38
2	A	301	OFN	C29-C30-C31-C32
2	A	301	OFN	N1-C7-C8-O3
2	B	301	OFN	C35-C36-C37-C38
3	A	303	37X	CBD-CBF-CBH-CBJ

Continued on next page...

Continued from previous page...

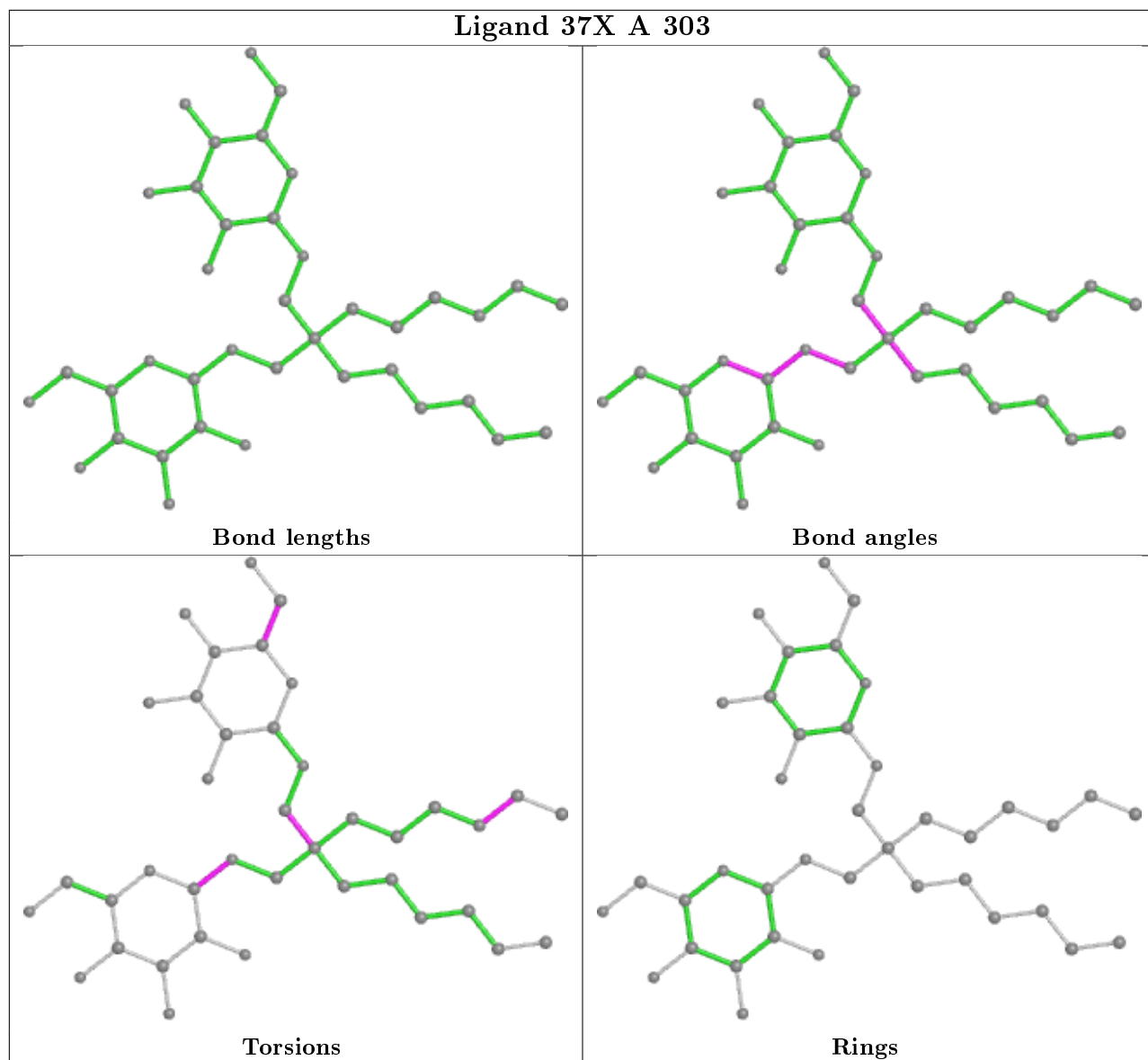
Mol	Chain	Res	Type	Atoms
3	A	302	37X	CBF-CBH-CBJ-CBL
3	B	302	37X	O1-CBS-CCM-CBR
2	A	301	OFN	C28-C29-C30-C31
2	B	301	OFN	C13-O10-P1-O9
3	A	304	37X	CBK-CBQ-CCM-CBS
2	B	301	OFN	C14-C13-O10-P1

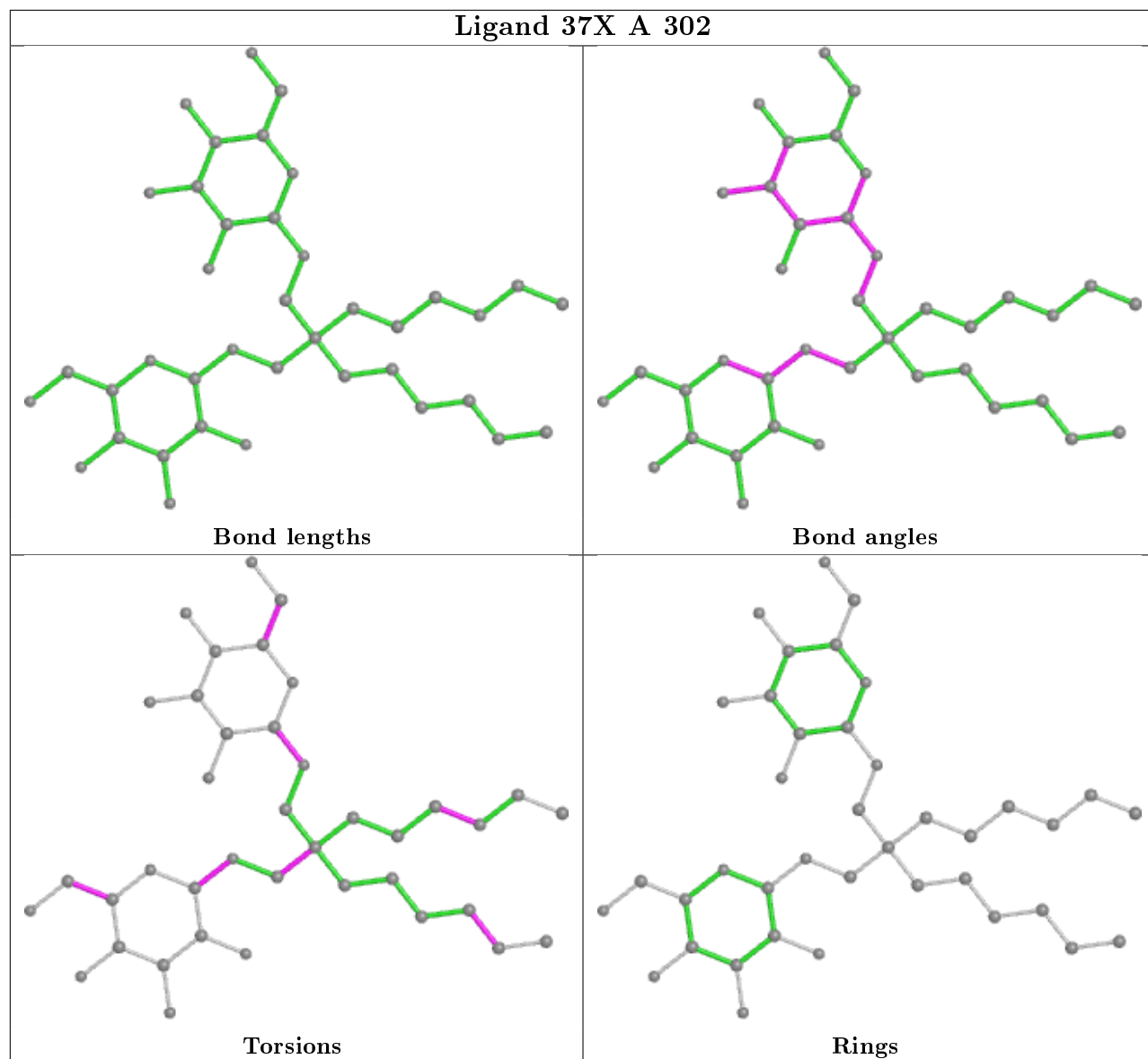
There are no ring outliers.

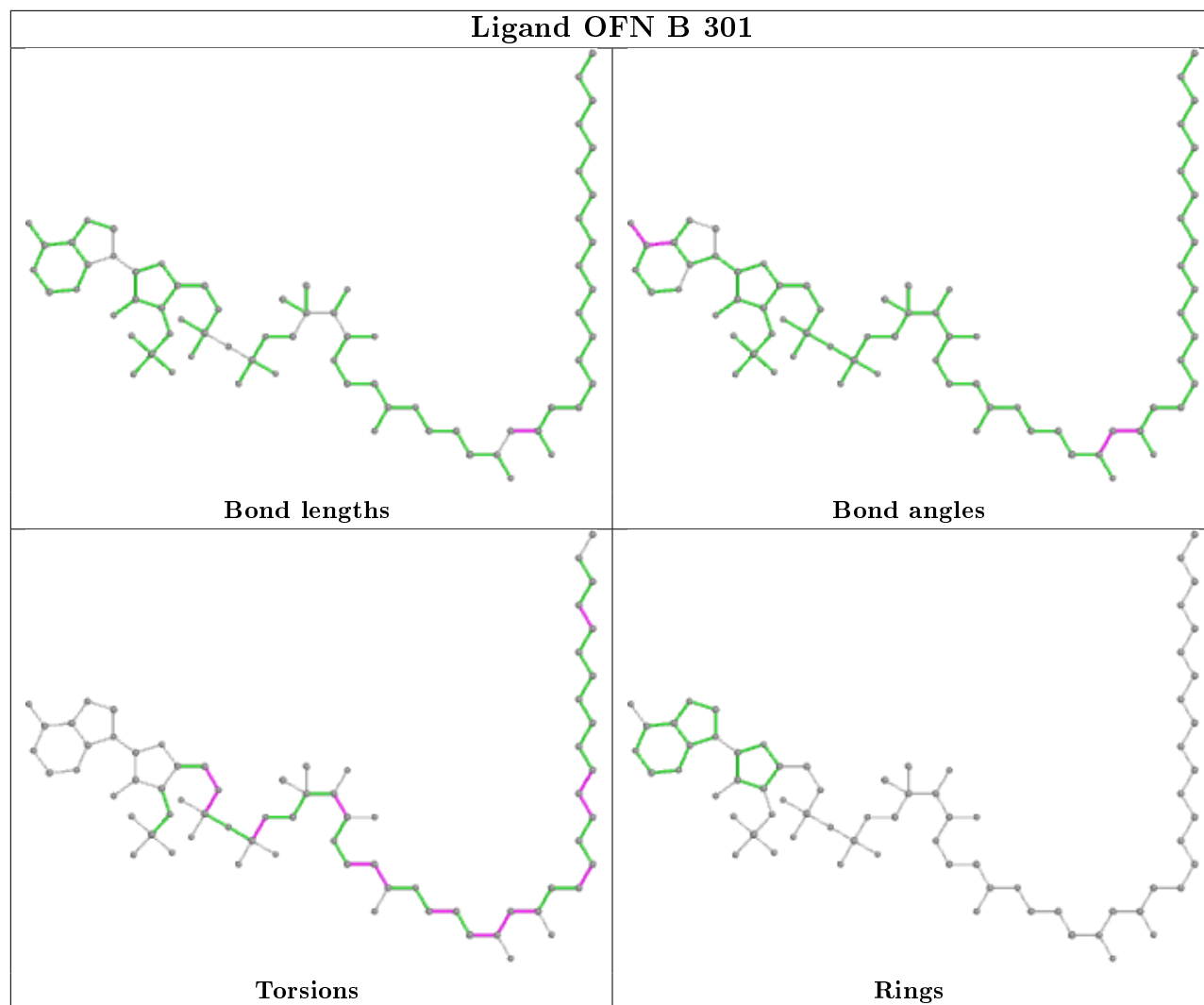
5 monomers are involved in 11 short contacts:

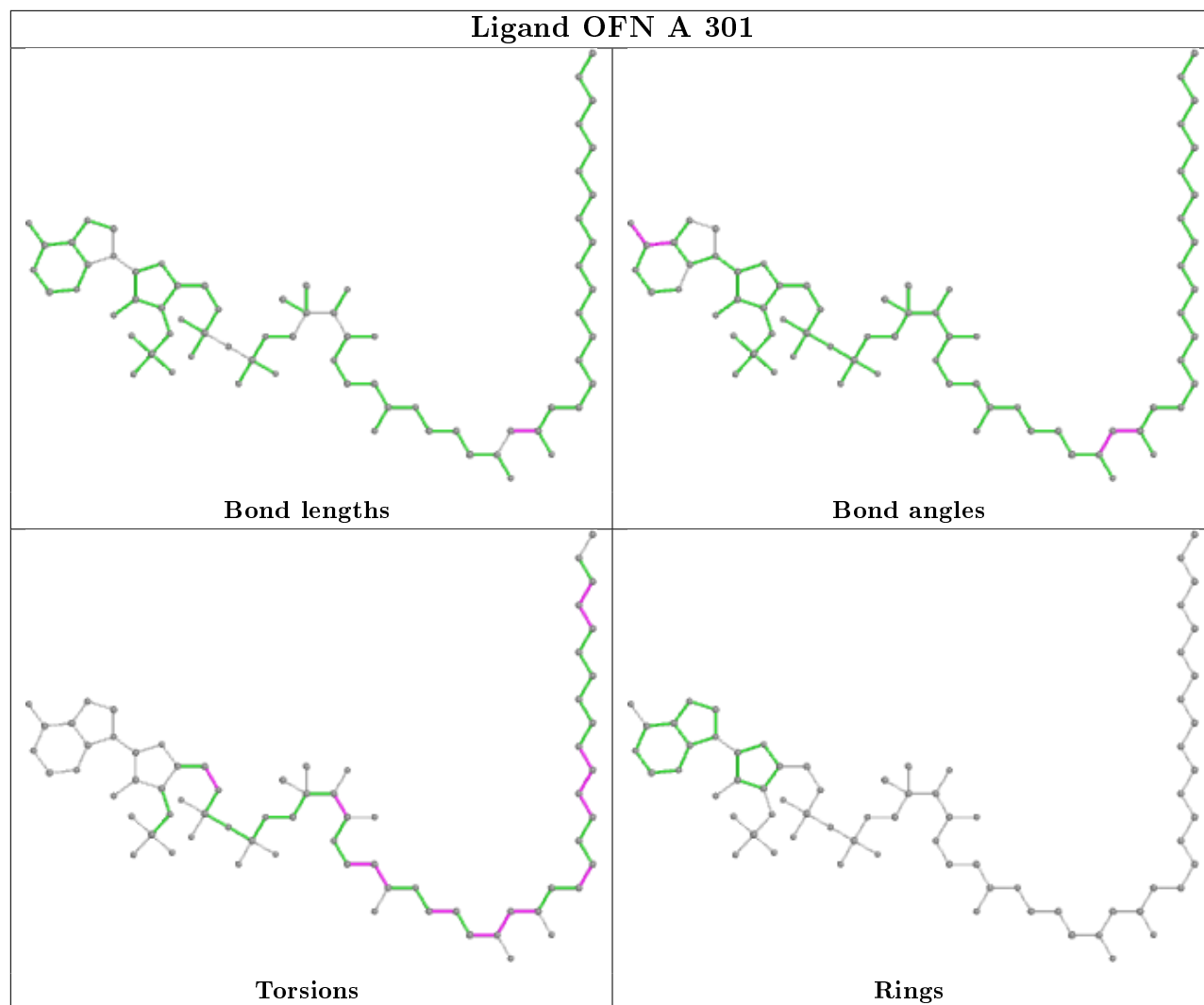
Mol	Chain	Res	Type	Clashes	Symm-Clashes
3	A	303	37X	5	0
3	A	302	37X	3	0
2	B	301	OFN	2	0
2	A	301	OFN	2	0
3	A	304	37X	3	0

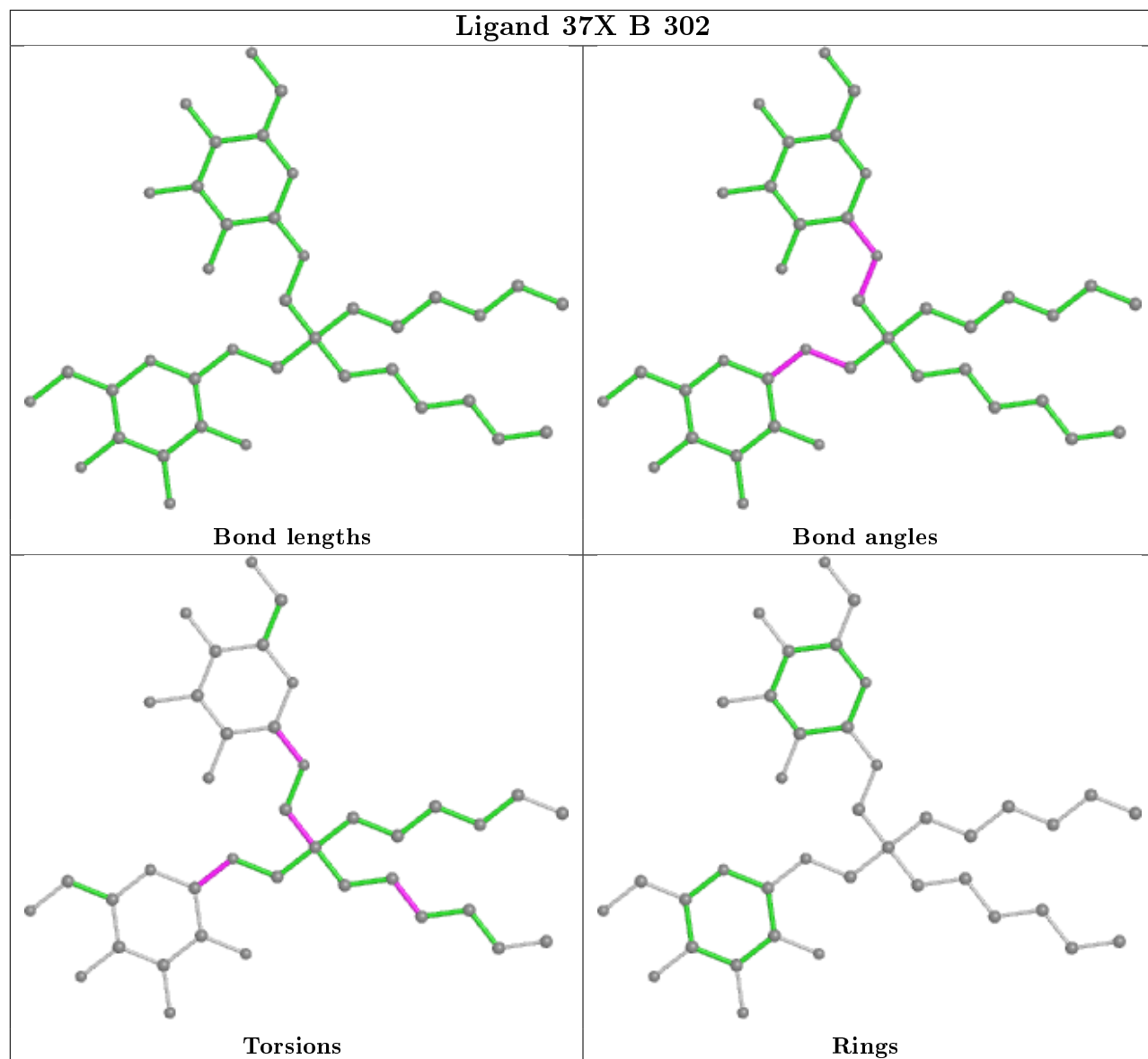
The following is a two-dimensional graphical depiction of Mogul quality analysis of bond lengths, bond angles, torsion angles, and ring geometry for all instances of the Ligand of Interest. In addition, ligands with molecular weight > 250 and outliers as shown on the validation Tables will also be included. For torsion angles, if less than 5% of the Mogul distribution of torsion angles is within 10 degrees of the torsion angle in question, then that torsion angle is considered an outlier. Any bond that is central to one or more torsion angles identified as an outlier by Mogul will be highlighted in the graph. For rings, the root-mean-square deviation (RMSD) between the ring in question and similar rings identified by Mogul is calculated over all ring torsion angles. If the average RMSD is greater than 60 degrees and the minimal RMSD between the ring in question and any Mogul-identified rings is also greater than 60 degrees, then that ring is considered an outlier. The outliers are highlighted in purple. The color gray indicates Mogul did not find sufficient equivalents in the CSD to analyse the geometry.

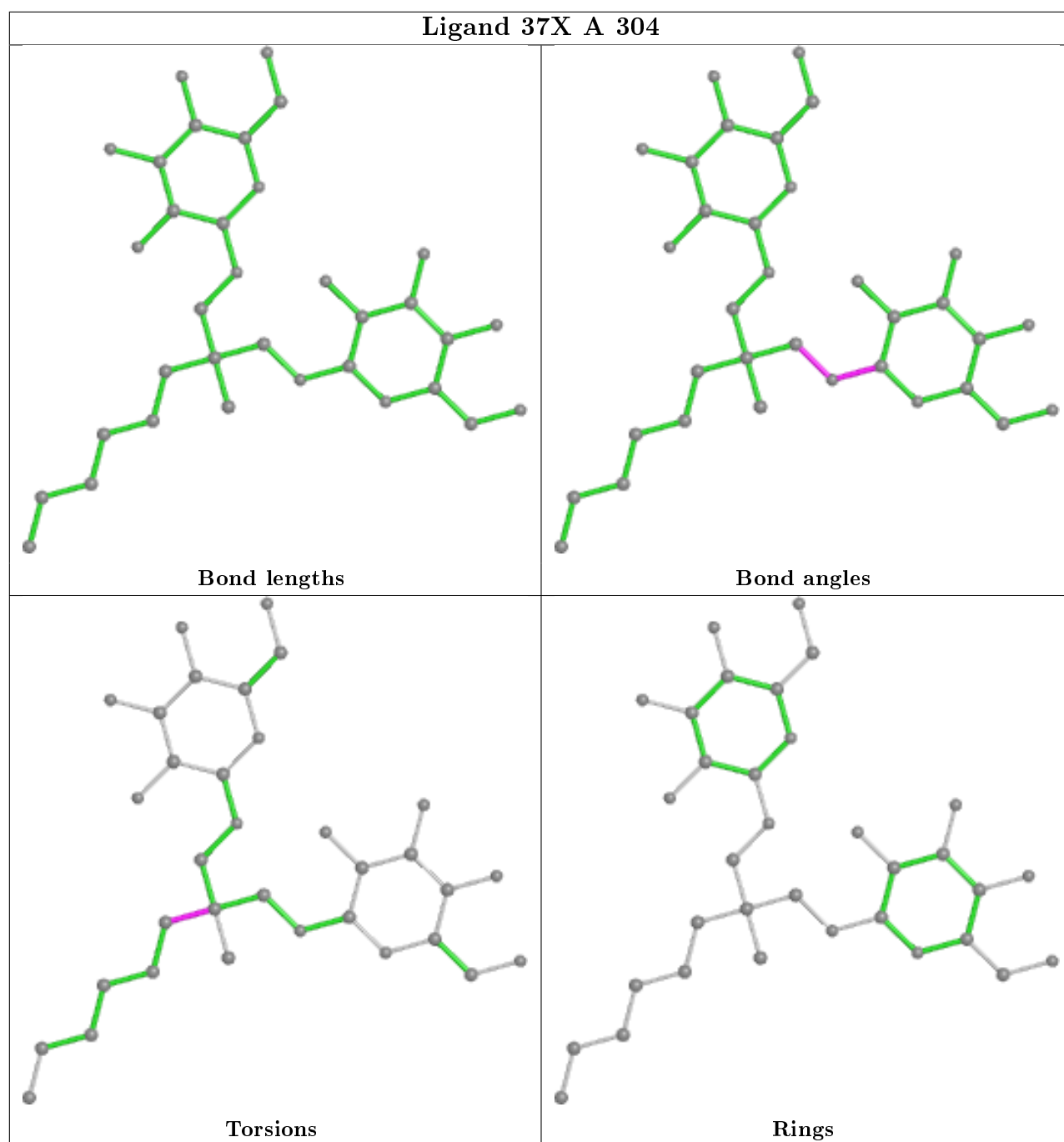












5.7 Other polymers [\(i\)](#)

There are no such residues in this entry.

5.8 Polymer linkage issues [\(i\)](#)

There are no chain breaks in this entry.

6 Fit of model and data

6.1 Protein, DNA and RNA chains

In the following table, the column labelled ‘#RSRZ> 2’ contains the number (and percentage) of RSRZ outliers, followed by percent RSRZ outliers for the chain as percentile scores relative to all X-ray entries and entries of similar resolution. The OWAB column contains the minimum, median, 95th percentile and maximum values of the occupancy-weighted average B-factor per residue. The column labelled ‘Q< 0.9’ lists the number of (and percentage) of residues with an average occupancy less than 0.9.

Mol	Chain	Analysed	<RSRZ>	#RSRZ>2	OWAB(Å ²)	Q<0.9
1	A	254/288 (88%)	0.28	21 (8%) 11 11	25, 37, 61, 81	0
1	B	256/288 (88%)	0.58	30 (11%) 4 4	22, 42, 90, 105	0
All	All	510/576 (88%)	0.43	51 (10%) 7 7	22, 39, 78, 105	0

All (51) RSRZ outliers are listed below:

Mol	Chain	Res	Type	RSRZ
1	B	200	TYR	8.6
1	B	195	PRO	8.2
1	B	194	GLY	7.0
1	B	17	TRP	6.9
1	B	198	GLN	6.6
1	B	196	ALA	6.4
1	B	58	ASN	6.3
1	A	17	TRP	6.2
1	B	16	ASN	5.7
1	A	230	ASP	4.8
1	B	197	TYR	4.7
1	B	199	LYS	4.5
1	B	15	ASP	4.1
1	B	188	TYR	3.9
1	B	51	LEU	3.9
1	A	16	ASN	3.8
1	A	60	LYS	3.7
1	B	14	TYR	3.5
1	A	58	ASN	3.5
1	A	59	ARG	3.4
1	A	63	GLU	3.4
1	B	55	LEU	3.2
1	A	196	ALA	3.2
1	B	84	TYR	3.1

Continued on next page...

Continued from previous page...

Mol	Chain	Res	Type	RSRZ
1	B	73	PHE	3.1
1	B	131	THR	3.0
1	B	62	PHE	3.0
1	A	188	TYR	3.0
1	B	43	PHE	3.0
1	B	202	TRP	2.9
1	A	185	TYR	2.8
1	B	63	GLU	2.8
1	A	55	LEU	2.7
1	A	181	HIS	2.7
1	B	50	SER	2.6
1	A	53	PRO	2.6
1	A	184	MET	2.6
1	B	19	LYS	2.5
1	B	264	GLY	2.5
1	A	120	TYR	2.4
1	A	62	PHE	2.4
1	B	18	ILE	2.4
1	B	61	PRO	2.4
1	B	35	LEU	2.3
1	A	197	TYR	2.3
1	A	56	MET	2.3
1	A	61	PRO	2.2
1	B	269	LYS	2.2
1	A	229	GLU	2.2
1	A	18	ILE	2.1
1	B	268	PRO	2.0

6.2 Non-standard residues in protein, DNA, RNA chains [i](#)

There are no non-standard protein/DNA/RNA residues in this entry.

6.3 Carbohydrates [i](#)

There are no monosaccharides in this entry.

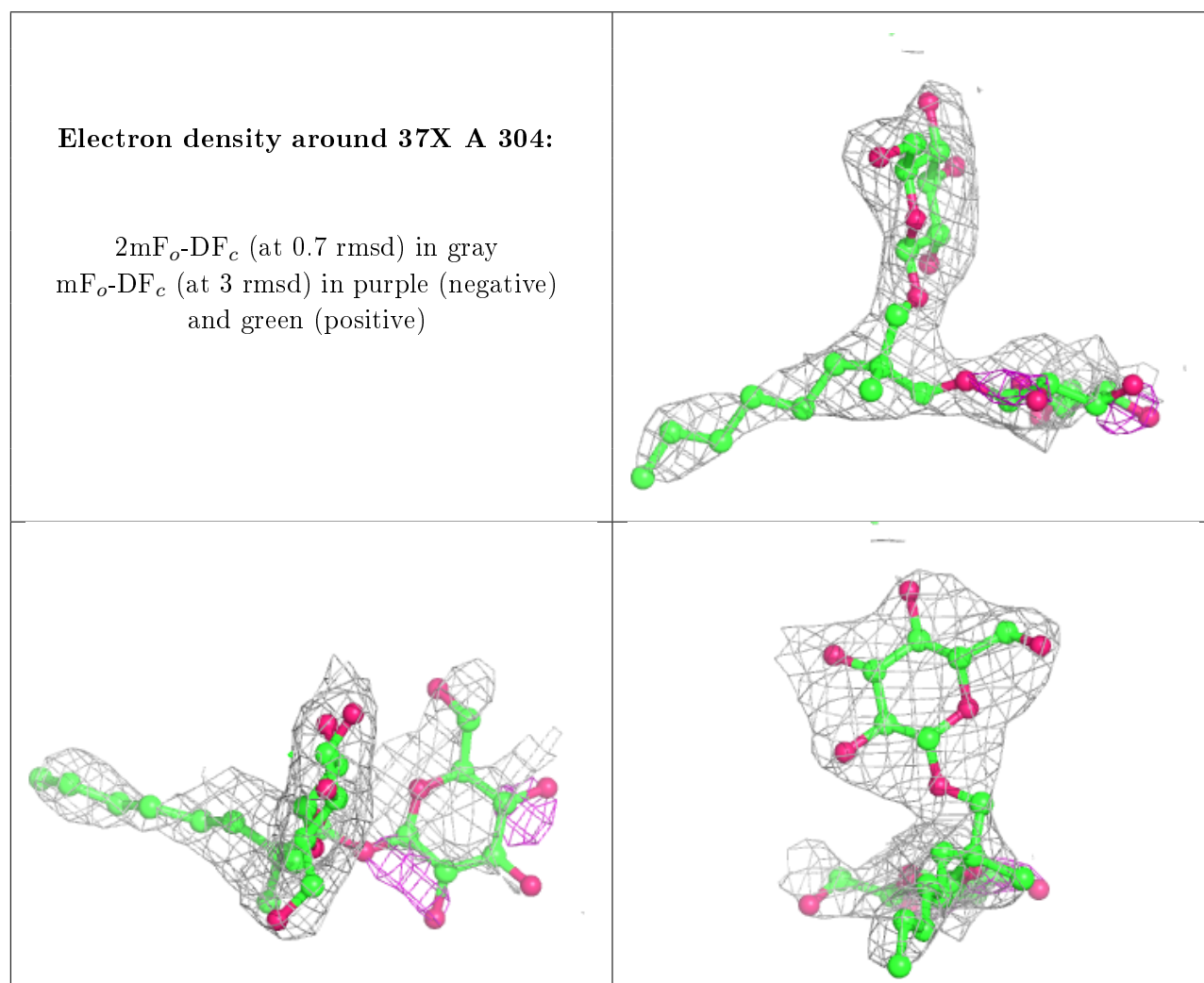
6.4 Ligands [i](#)

In the following table, the Atoms column lists the number of modelled atoms in the group and the number defined in the chemical component dictionary. The B-factors column lists the minimum,

median, 95th percentile and maximum values of B factors of atoms in the group. The column labelled 'Q< 0.9' lists the number of atoms with occupancy less than 0.9.

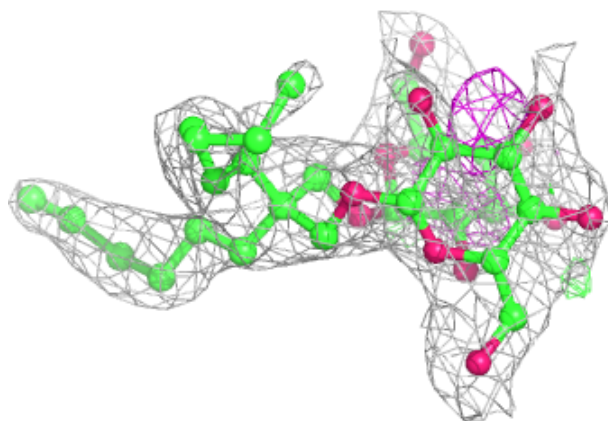
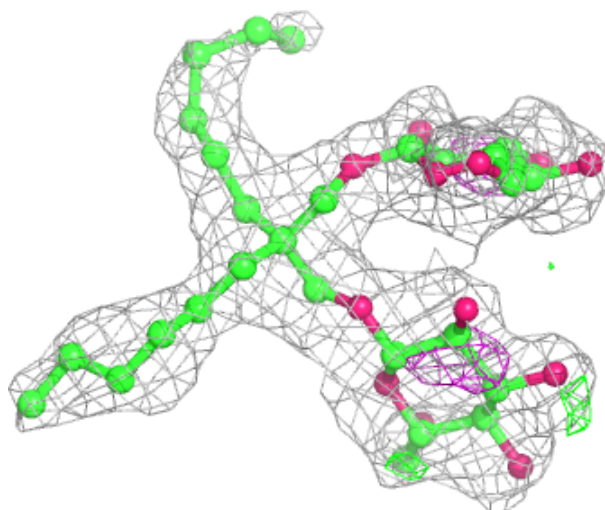
Mol	Type	Chain	Res	Atoms	RSCC	RSR	B-factors(Å ²)	Q<0.9
3	37X	A	304	34/39	0.63	0.35	82,85,93,93	0
3	37X	B	302	39/39	0.73	0.29	62,65,68,69	0
3	37X	A	303	39/39	0.91	0.20	44,49,53,53	0
3	37X	A	302	39/39	0.93	0.17	32,39,44,45	0
2	OFN	B	301	70/70	0.94	0.18	33,48,62,66	0
2	OFN	A	301	70/70	0.95	0.18	27,36,43,47	0
4	CL	B	303	1/1	0.97	0.06	43,43,43,43	0
4	CL	A	305	1/1	0.99	0.08	39,39,39,39	0

The following is a graphical depiction of the model fit to experimental electron density of all instances of the Ligand of Interest. In addition, ligands with molecular weight > 250 and outliers as shown on the geometry validation Tables will also be included. Each fit is shown from different orientation to approximate a three-dimensional view.



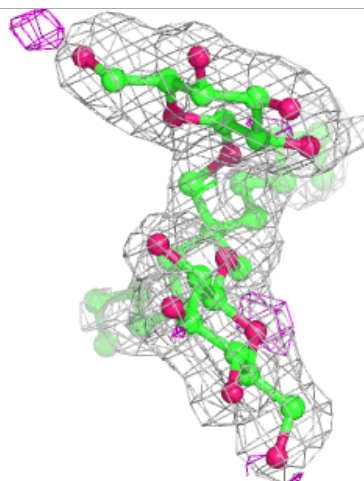
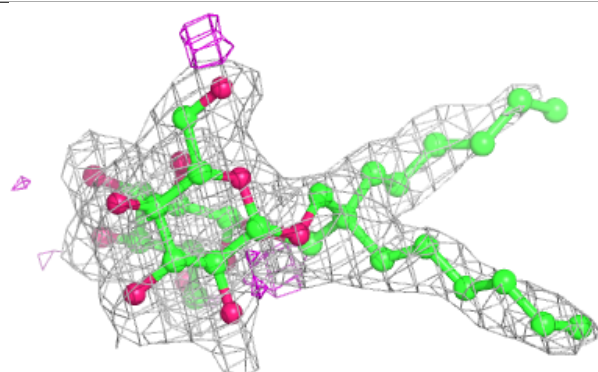
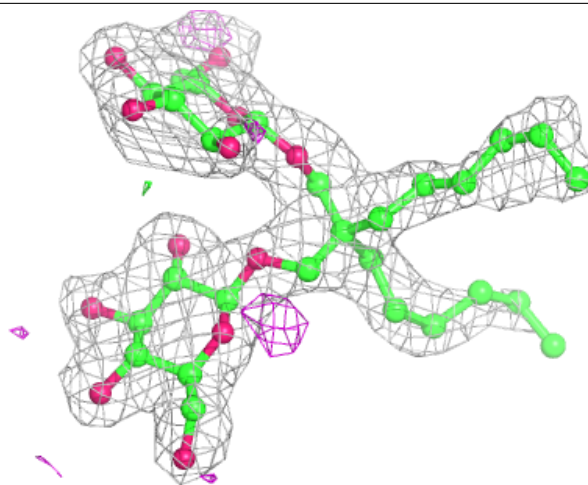
Electron density around 37X B 302:

$2mF_o-DF_c$ (at 0.7 rmsd) in gray
 mF_o-DF_c (at 3 rmsd) in purple (negative)
and green (positive)



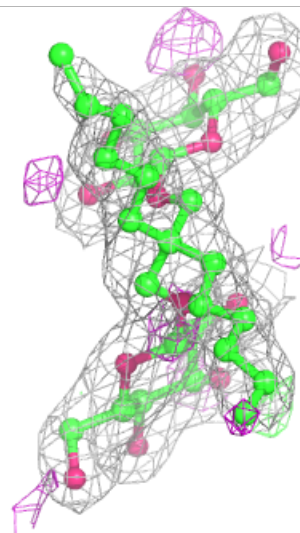
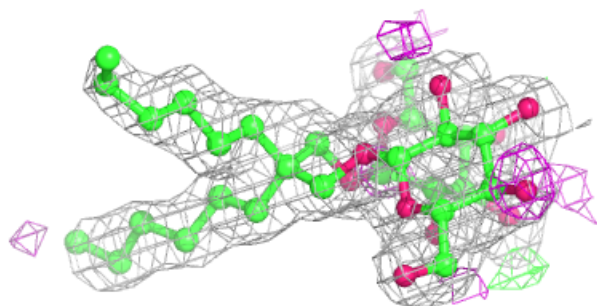
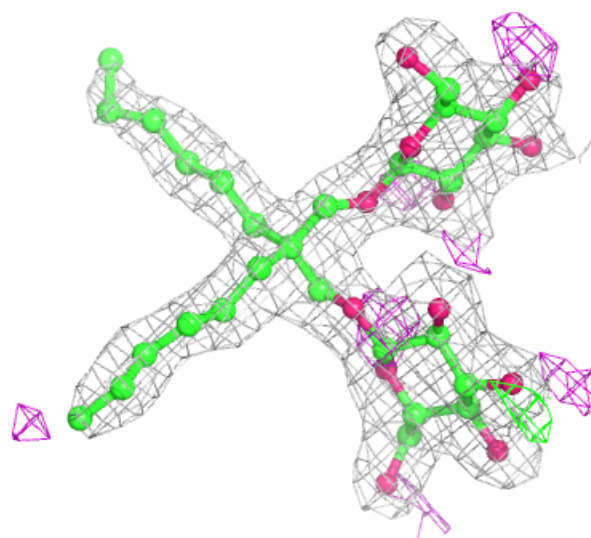
Electron density around 37X A 303:

$2mF_o-DF_c$ (at 0.7 rmsd) in gray
 mF_o-DF_c (at 3 rmsd) in purple (negative)
and green (positive)



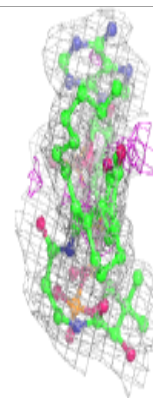
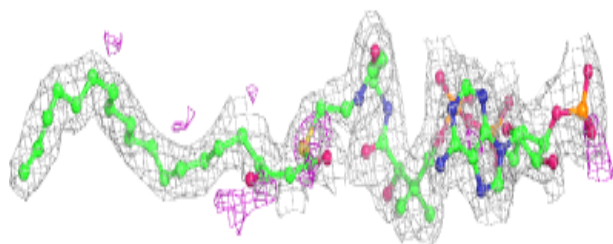
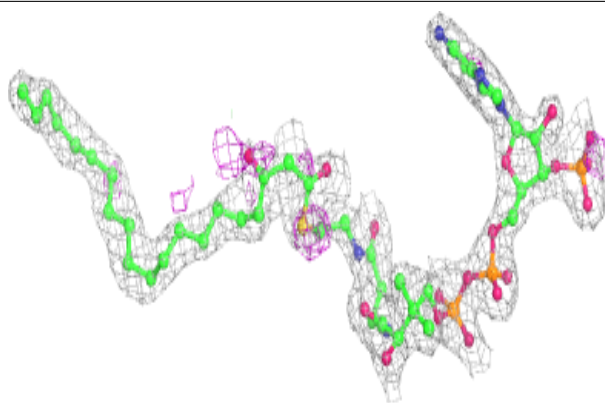
Electron density around 37X A 302:

$2mF_o-DF_c$ (at 0.7 rmsd) in gray
 mF_o-DF_c (at 3 rmsd) in purple (negative)
and green (positive)

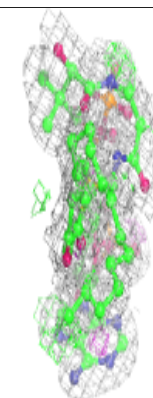
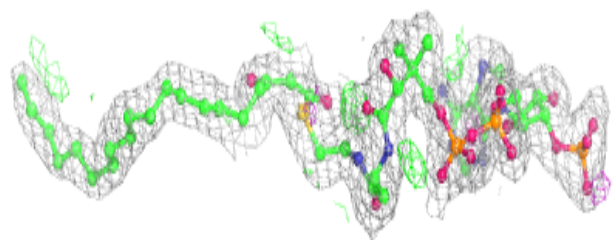
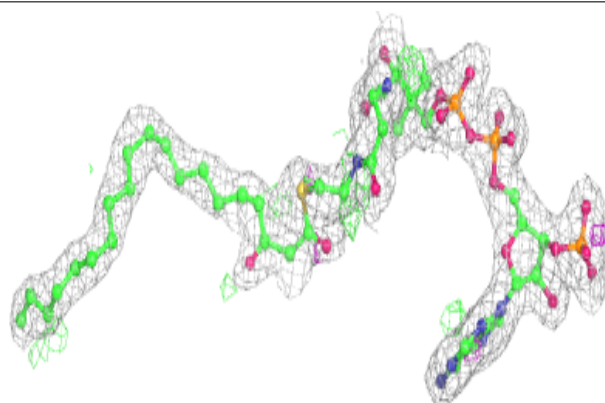


Electron density around OFN B 301:

$2mF_o-DF_c$ (at 0.7 rmsd) in gray
 mF_o-DF_c (at 3 rmsd) in purple (negative)
and green (positive)

**Electron density around OFN A 301:**

$2mF_o-DF_c$ (at 0.7 rmsd) in gray
 mF_o-DF_c (at 3 rmsd) in purple (negative)
and green (positive)



6.5 Other polymers

There are no such residues in this entry.