



Full wwPDB X-ray Structure Validation Report ⓘ

Aug 6, 2020 – 10:44 AM BST

PDB ID : 2YCX
Title : TURKEY BETA1 ADRENERGIC RECEPTOR WITH STABILISING MUTATIONS AND BOUND ANTAGONIST CYANOPINDOLOL
Authors : Moukhametzianov, R.; Warne, T.; Edwards, P.C.; Serrano-Vega, M.J.; Leslie, A.G.W.; Tate, C.G.; Schertler, G.F.X.
Deposited on : 2011-03-17
Resolution : 3.25 Å(reported)

This is a Full wwPDB X-ray Structure Validation Report for a publicly released PDB entry.

We welcome your comments at validation@mail.wwpdb.org

A user guide is available at

<https://www.wwpdb.org/validation/2017/XrayValidationReportHelp>

with specific help available everywhere you see the ⓘ symbol.

The following versions of software and data (see [references ⓘ](#)) were used in the production of this report:

MolProbity : 4.02b-467
Mogul : 1.8.5 (274361), CSD as541be (2020)
Xtriage (Phenix) : 1.13
EDS : 2.13.1
buster-report : 1.1.7 (2018)
Percentile statistics : 20191225.v01 (using entries in the PDB archive December 25th 2019)
Refmac : 5.8.0158
CCP4 : 7.0.044 (Gargrove)
Ideal geometry (proteins) : Engh & Huber (2001)
Ideal geometry (DNA, RNA) : Parkinson et al. (1996)
Validation Pipeline (wwPDB-VP) : 2.13.1

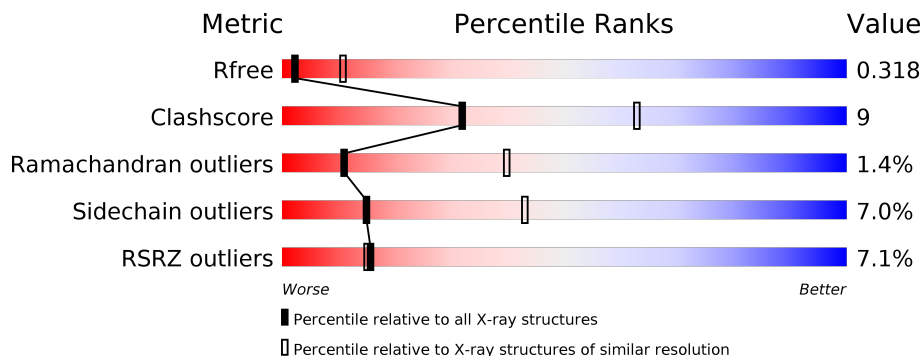
1 Overall quality at a glance

The following experimental techniques were used to determine the structure:

X-RAY DIFFRACTION

The reported resolution of this entry is 3.25 Å.

Percentile scores (ranging between 0-100) for global validation metrics of the entry are shown in the following graphic. The table shows the number of entries on which the scores are based.



Metric	Whole archive (#Entries)	Similar resolution (#Entries, resolution range(Å))
R_{free}	130704	1191 (3.30-3.22)
Clashscore	141614	1251 (3.30-3.22)
Ramachandran outliers	138981	1229 (3.30-3.22)
Sidechain outliers	138945	1228 (3.30-3.22)
RSRZ outliers	127900	1154 (3.30-3.22)

The table below summarises the geometric issues observed across the polymeric chains and their fit to the electron density. The red, orange, yellow and green segments on the lower bar indicate the fraction of residues that contain outliers for ≥ 3 , 2, 1 and 0 types of geometric quality criteria respectively. A grey segment represents the fraction of residues that are not modelled. The numeric value for each fraction is indicated below the corresponding segment, with a dot representing fractions $\leq 5\%$. The upper red bar (where present) indicates the fraction of residues that have poor fit to the electron density. The numeric value is given above the bar.

Mol	Chain	Length	Quality of chain
1	A	313	
1	B	313	

The following table lists non-polymeric compounds, carbohydrate monomers and non-standard residues in protein, DNA, RNA chains that are outliers for geometric or electron-density-fit criteria:

Mol	Type	Chain	Res	Chirality	Geometry	Clashes	Electron density
3	SOG	B	1360	-	-	-	X

2 Entry composition [i](#)

There are 3 unique types of molecules in this entry. The entry contains 4696 atoms, of which 0 are hydrogens and 0 are deuteriums.

In the tables below, the ZeroOcc column contains the number of atoms modelled with zero occupancy, the AltConf column contains the number of residues with at least one atom in alternate conformation and the Trace column contains the number of residues modelled with at most 2 atoms.

- Molecule 1 is a protein called BETA-1 ADRENERGIC RECEPTOR.

Mol	Chain	Residues	Atoms					ZeroOcc	AltConf	Trace
			Total	C	N	O	S			
1	A	286	2281	1504	380	377	20	0	0	0
1	B	290	2313	1525	387	381	20	0	0	0

There are 92 discrepancies between the modelled and reference sequences:

Chain	Residue	Modelled	Actual	Comment	Reference
A	31	MET	-	expression tag	UNP P07700
A	32	GLY	-	expression tag	UNP P07700
A	68	SER	ARG	engineered mutation	UNP P07700
A	90	VAL	MET	engineered mutation	UNP P07700
A	116	LEU	CYS	engineered mutation	UNP P07700
A	227	ALA	TYR	engineered mutation	UNP P07700
A	?	-	CYS	deletion	UNP P07700
A	?	-	GLU	deletion	UNP P07700
A	?	-	GLY	deletion	UNP P07700
A	?	-	ARG	deletion	UNP P07700
A	?	-	PHE	deletion	UNP P07700
A	?	-	TYR	deletion	UNP P07700
A	?	-	GLY	deletion	UNP P07700
A	?	-	SER	deletion	UNP P07700
A	?	-	GLN	deletion	UNP P07700
A	?	-	GLU	deletion	UNP P07700
A	?	-	GLN	deletion	UNP P07700
A	?	-	PRO	deletion	UNP P07700
A	?	-	GLN	deletion	UNP P07700
A	?	-	PRO	deletion	UNP P07700
A	?	-	PRO	deletion	UNP P07700
A	?	-	PRO	deletion	UNP P07700
A	?	-	LEU	deletion	UNP P07700
A	?	-	PRO	deletion	UNP P07700
A	?	-	GLN	deletion	UNP P07700

Continued on next page...

Continued from previous page...

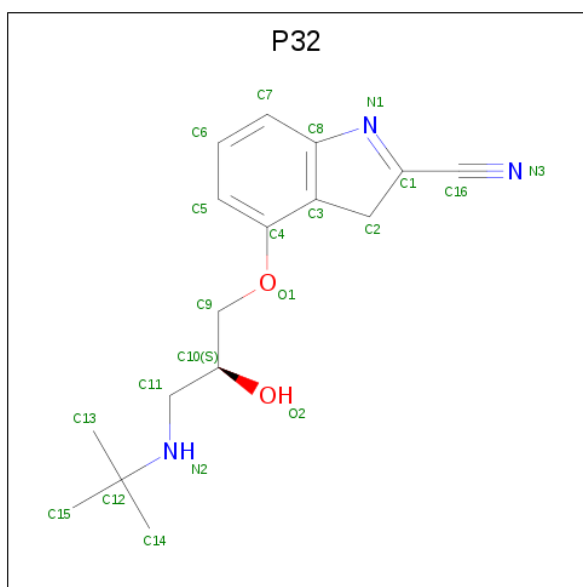
Chain	Residue	Modelled	Actual	Comment	Reference
A	?	-	HIS	deletion	UNP P07700
A	?	-	GLN	deletion	UNP P07700
A	?	-	PRO	deletion	UNP P07700
A	?	-	ILE	deletion	UNP P07700
A	?	-	LEU	deletion	UNP P07700
A	?	-	GLY	deletion	UNP P07700
A	?	-	ASN	deletion	UNP P07700
A	?	-	GLY	deletion	UNP P07700
A	?	-	ARG	deletion	UNP P07700
A	?	-	THR	deletion	UNP P07700
A	?	-	SER	deletion	UNP P07700
A	282	LEU	ALA	engineered mutation	UNP P07700
A	327	ALA	PHE	engineered mutation	UNP P07700
A	338	MET	PHE	engineered mutation	UNP P07700
A	358	ALA	CYS	engineered mutation	UNP P07700
A	368	HIS	-	expression tag	UNP P07700
A	369	HIS	-	expression tag	UNP P07700
A	370	HIS	-	expression tag	UNP P07700
A	371	HIS	-	expression tag	UNP P07700
A	372	HIS	-	expression tag	UNP P07700
A	373	HIS	-	expression tag	UNP P07700
B	31	MET	-	expression tag	UNP P07700
B	32	GLY	-	expression tag	UNP P07700
B	68	SER	ARG	engineered mutation	UNP P07700
B	90	VAL	MET	engineered mutation	UNP P07700
B	116	LEU	CYS	engineered mutation	UNP P07700
B	227	ALA	TYR	engineered mutation	UNP P07700
B	?	-	CYS	deletion	UNP P07700
B	?	-	GLU	deletion	UNP P07700
B	?	-	GLY	deletion	UNP P07700
B	?	-	ARG	deletion	UNP P07700
B	?	-	PHE	deletion	UNP P07700
B	?	-	TYR	deletion	UNP P07700
B	?	-	GLY	deletion	UNP P07700
B	?	-	SER	deletion	UNP P07700
B	?	-	GLN	deletion	UNP P07700
B	?	-	GLU	deletion	UNP P07700
B	?	-	GLN	deletion	UNP P07700
B	?	-	PRO	deletion	UNP P07700
B	?	-	GLN	deletion	UNP P07700
B	?	-	PRO	deletion	UNP P07700
B	?	-	PRO	deletion	UNP P07700

Continued on next page...

Continued from previous page...

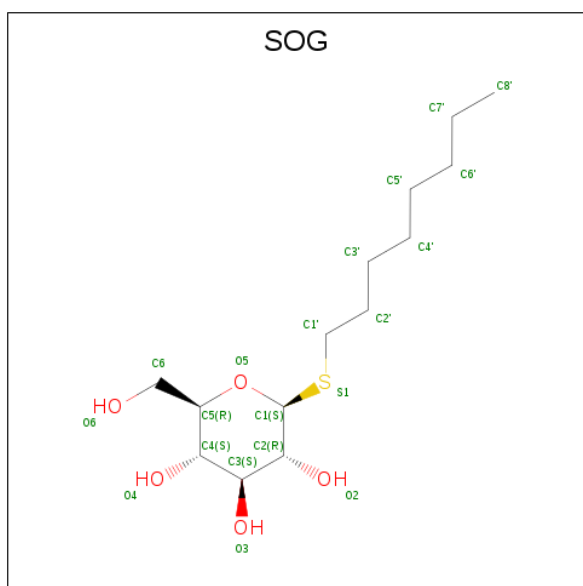
Chain	Residue	Modelled	Actual	Comment	Reference
B	?	-	PRO	deletion	UNP P07700
B	?	-	LEU	deletion	UNP P07700
B	?	-	PRO	deletion	UNP P07700
B	?	-	GLN	deletion	UNP P07700
B	?	-	HIS	deletion	UNP P07700
B	?	-	GLN	deletion	UNP P07700
B	?	-	PRO	deletion	UNP P07700
B	?	-	ILE	deletion	UNP P07700
B	?	-	LEU	deletion	UNP P07700
B	?	-	GLY	deletion	UNP P07700
B	?	-	ASN	deletion	UNP P07700
B	?	-	GLY	deletion	UNP P07700
B	?	-	ARG	deletion	UNP P07700
B	?	-	THR	deletion	UNP P07700
B	?	-	SER	deletion	UNP P07700
B	282	LEU	ALA	engineered mutation	UNP P07700
B	327	ALA	PHE	engineered mutation	UNP P07700
B	338	MET	PHE	engineered mutation	UNP P07700
B	358	ALA	CYS	engineered mutation	UNP P07700
B	368	HIS	-	expression tag	UNP P07700
B	369	HIS	-	expression tag	UNP P07700
B	370	HIS	-	expression tag	UNP P07700
B	371	HIS	-	expression tag	UNP P07700
B	372	HIS	-	expression tag	UNP P07700
B	373	HIS	-	expression tag	UNP P07700

- Molecule 2 is 4-{{[(2S)-3-(tert-butylamino)-2-hydroxypropyl]oxy}}-3H-indole-2-carbonitrile (three-letter code: P32) (formula: C₁₆H₂₁N₃O₂).



Mol	Chain	Residues	Atoms				ZeroOcc	AltConf
			Total	C	N	O		
2	A	1	21	16	3	2	0	0
2	B	1	21	16	3	2	0	0

- Molecule 3 is octyl 1-thio-beta-D-glucopyranoside (three-letter code: SOG) (formula: $C_{14}H_{28}O_5S$).



Mol	Chain	Residues	Atoms				ZeroOcc	AltConf
			Total	C	O	S		
3	B	1	20	14	5	1	0	0

Continued on next page...

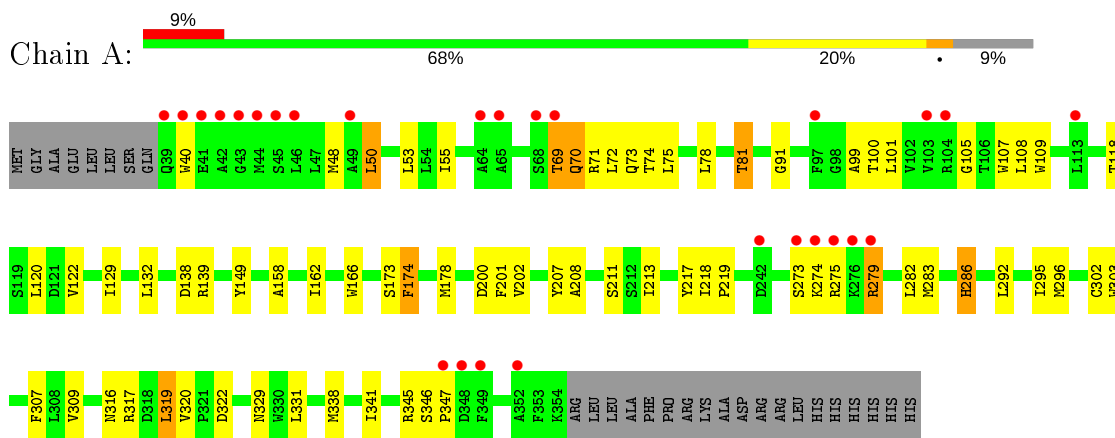
Continued from previous page...

Mol	Chain	Residues	Atoms				ZeroOcc	AltConf
3	B	1	Total	C	O	S	0	0
			20	14	5	1		
3	B	1	Total	C	O	S	0	0
			20	14	5	1		

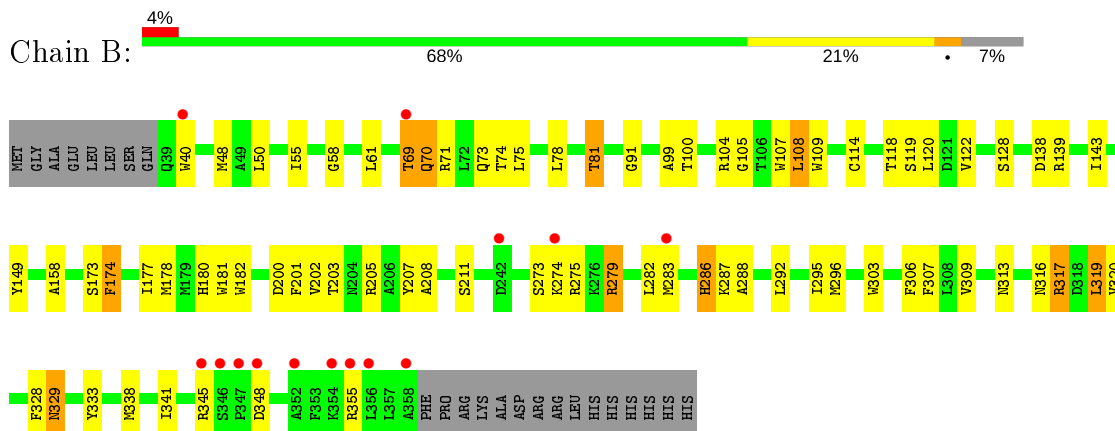
3 Residue-property plots [i](#)

These plots are drawn for all protein, RNA, DNA and oligosaccharide chains in the entry. The first graphic for a chain summarises the proportions of the various outlier classes displayed in the second graphic. The second graphic shows the sequence view annotated by issues in geometry and electron density. Residues are color-coded according to the number of geometric quality criteria for which they contain at least one outlier: green = 0, yellow = 1, orange = 2 and red = 3 or more. A red dot above a residue indicates a poor fit to the electron density ($RSRZ > 2$). Stretches of 2 or more consecutive residues without any outlier are shown as a green connector. Residues present in the sample, but not in the model, are shown in grey.

- Molecule 1: BETA-1 ADRENERGIC RECEPTOR



- Molecule 1: BETA-1 ADRENERGIC RECEPTOR



4 Data and refinement statistics

Property	Value	Source
Space group	C 1 2 1	Depositor
Cell constants a, b, c, α , β , γ	150.03Å 56.43Å 111.41Å 90.00° 118.33° 90.00°	Depositor
Resolution (Å)	39.50 – 3.25 39.51 – 3.25	Depositor EDS
% Data completeness (in resolution range)	100.0 (39.50-3.25) 84.7 (39.51-3.25)	Depositor EDS
R_{merge}	0.14	Depositor
R_{sym}	(Not available)	Depositor
$\langle I/\sigma(I) \rangle$ ¹	2.05 (at 3.25Å)	Xtrriage
Refinement program	REFMAC 5.5.0109	Depositor
R, R_{free}	0.271 , 0.325 0.269 , 0.318	Depositor DCC
R_{free} test set	532 reflections (4.77%)	wwPDB-VP
Wilson B-factor (Å ²)	66.1	Xtrriage
Anisotropy	0.796	Xtrriage
Bulk solvent k_{sol} (e/Å ³), B_{sol} (Å ²)	0.33 , 49.1	EDS
L-test for twinning ²	$\langle L \rangle = 0.46$, $\langle L^2 \rangle = 0.29$	Xtrriage
Estimated twinning fraction	No twinning to report.	Xtrriage
F_o, F_c correlation	0.87	EDS
Total number of atoms	4696	wwPDB-VP
Average B, all atoms (Å ²)	65.0	wwPDB-VP

Xtrriage's analysis on translational NCS is as follows: *The largest off-origin peak in the Patterson function is 6.64% of the height of the origin peak. No significant pseudotranslation is detected.*

¹Intensities estimated from amplitudes.

²Theoretical values of $\langle |L| \rangle$, $\langle L^2 \rangle$ for acentric reflections are 0.5, 0.333 respectively for untwinned datasets, and 0.375, 0.2 for perfectly twinned datasets.

5 Model quality [i](#)

5.1 Standard geometry [i](#)

Bond lengths and bond angles in the following residue types are not validated in this section: P32, SOG

The Z score for a bond length (or angle) is the number of standard deviations the observed value is removed from the expected value. A bond length (or angle) with $|Z| > 5$ is considered an outlier worth inspection. RMSZ is the root-mean-square of all Z scores of the bond lengths (or angles).

Mol	Chain	Bond lengths		Bond angles	
		RMSZ	# Z >5	RMSZ	# Z >5
1	A	0.53	0/2336	0.59	0/3181
1	B	0.54	0/2368	0.62	1/3224 (0.0%)
All	All	0.53	0/4704	0.60	1/6405 (0.0%)

There are no bond length outliers.

All (1) bond angle outliers are listed below:

Mol	Chain	Res	Type	Atoms	Z	Observed(°)	Ideal(°)
1	B	355	ARG	NE-CZ-NH2	5.40	123.00	120.30

There are no chirality outliers.

There are no planarity outliers.

5.2 Too-close contacts [i](#)

In the following table, the Non-H and H(model) columns list the number of non-hydrogen atoms and hydrogen atoms in the chain respectively. The H(added) column lists the number of hydrogen atoms added and optimized by MolProbity. The Clashes column lists the number of clashes within the asymmetric unit, whereas Symm-Clashes lists symmetry related clashes.

Mol	Chain	Non-H	H(model)	H(added)	Clashes	Symm-Clashes
1	A	2281	0	2373	40	0
1	B	2313	0	2413	44	0
2	A	21	0	21	3	0
2	B	21	0	21	3	0
3	B	60	0	84	4	0
All	All	4696	0	4912	85	0

The all-atom clashscore is defined as the number of clashes found per 1000 atoms (including

hydrogen atoms). The all-atom clashscore for this structure is 9.

All (85) close contacts within the same asymmetric unit are listed below, sorted by their clash magnitude.

Atom-1	Atom-2	Interatomic distance (Å)	Clash overlap (Å)
1:A:208:ALA:HA	2:A:1355:P32:N3	1.97	0.79
1:A:207:TYR:O	1:A:211:SER:HB3	1.86	0.75
1:B:207:TYR:O	1:B:211:SER:HB3	1.88	0.74
1:A:122:VAL:HG12	1:A:173:SER:HB2	1.77	0.66
1:B:201:PHE:HB2	2:B:1359:P32:H141	1.77	0.66
1:B:122:VAL:HG12	1:B:173:SER:HB2	1.78	0.66
1:B:338:MET:HA	1:B:341:ILE:HD12	1.80	0.63
1:B:211:SER:OG	2:B:1359:P32:N1	2.29	0.62
1:A:338:MET:HA	1:A:341:ILE:HD12	1.81	0.62
1:A:69:THR:HG22	1:A:71:ARG:HB3	1.83	0.60
1:B:69:THR:HG22	1:B:71:ARG:HB3	1.85	0.58
1:B:75:LEU:HD23	1:B:158:ALA:HB2	1.86	0.58
1:A:100:THR:HG21	1:A:109:TRP:HZ2	1.69	0.57
1:A:316:ASN:HB3	1:A:319:LEU:HD22	1.87	0.57
1:B:139:ARG:NE	1:B:139:ARG:HA	2.19	0.57
1:B:292:LEU:O	1:B:296:MET:HG3	2.05	0.57
1:A:120:LEU:HD23	1:A:174:PHE:HE1	1.70	0.56
1:A:139:ARG:NE	1:A:139:ARG:HA	2.21	0.56
1:B:120:LEU:HD23	1:B:174:PHE:HE1	1.70	0.56
1:A:75:LEU:HD23	1:A:158:ALA:HB2	1.89	0.54
1:B:205:ARG:HH22	3:B:1361:SOG:H2	1.73	0.54
1:A:292:LEU:O	1:A:296:MET:HG3	2.08	0.53
1:B:205:ARG:HB2	3:B:1361:SOG:H7'1	1.90	0.52
1:B:100:THR:HG21	1:B:109:TRP:HZ2	1.74	0.52
1:B:48:MET:HG2	1:B:99:ALA:CB	2.40	0.52
1:B:208:ALA:HA	2:B:1359:P32:N3	2.24	0.52
1:B:55:ILE:HG21	1:B:91:GLY:HA3	1.91	0.52
1:B:279:ARG:O	1:B:283:MET:HB2	2.10	0.51
1:A:211:SER:OG	2:A:1355:P32:N1	2.34	0.51
1:A:282:LEU:O	1:A:286:HIS:HB2	2.11	0.51
1:A:48:MET:HG2	1:A:99:ALA:CB	2.40	0.51
1:B:316:ASN:HB3	1:B:319:LEU:HD22	1.92	0.50
1:A:309:VAL:HG13	1:A:320:VAL:HG11	1.94	0.49
1:A:101:LEU:HD13	1:A:107:TRP:HE3	1.77	0.49
1:A:129:ILE:HG13	1:A:219:PRO:HB2	1.93	0.49
1:B:48:MET:HG2	1:B:99:ALA:HB1	1.95	0.48
1:B:200:ASP:O	1:B:202:VAL:HG23	2.13	0.48
1:A:48:MET:HG2	1:A:99:ALA:HB1	1.96	0.48

Continued on next page...

Continued from previous page...

Atom-1	Atom-2	Interatomic distance (Å)	Clash overlap (Å)
1:B:174:PHE:O	1:B:178:MET:HG3	2.14	0.48
1:A:118:THR:HG21	1:A:201:PHE:CD1	2.49	0.48
1:B:181:TRP:HE3	3:B:1362:SOG:H6'1	1.79	0.48
1:B:182:TRP:HE3	1:B:203:THR:HG22	1.78	0.48
1:A:70:GLN:H	1:A:70:GLN:CD	2.17	0.47
1:A:55:ILE:HG21	1:A:91:GLY:HA3	1.97	0.47
1:A:174:PHE:O	1:A:178:MET:HG3	2.15	0.47
1:A:302:CYS:HB3	1:A:331:LEU:HG	1.98	0.46
1:B:282:LEU:O	1:B:286:HIS:HB2	2.15	0.46
1:A:273:SER:C	1:A:275:ARG:H	2.20	0.45
1:A:279:ARG:O	1:A:283:MET:HB2	2.16	0.45
1:B:100:THR:HG21	1:B:109:TRP:CZ2	2.52	0.45
1:A:303:TRP:O	1:A:307:PHE:HD1	2.00	0.45
1:B:287:LYS:O	1:B:288:ALA:HB3	2.17	0.45
1:B:273:SER:C	1:B:275:ARG:H	2.20	0.45
1:A:218:ILE:HB	1:A:219:PRO:HD3	1.99	0.44
1:B:303:TRP:O	1:B:307:PHE:HD1	2.00	0.44
2:A:1355:P32:H111	2:A:1355:P32:H143	1.81	0.44
1:B:180:HIS:HA	1:B:182:TRP:CD1	2.53	0.44
1:B:75:LEU:CD2	1:B:158:ALA:HB2	2.46	0.44
1:A:200:ASP:O	1:A:202:VAL:HG23	2.17	0.44
1:B:309:VAL:HG13	1:B:320:VAL:HG11	1.99	0.44
1:B:329:ASN:ND2	1:B:333:TYR:CE1	2.86	0.44
1:B:205:ARG:HH21	1:B:317:ARG:HE	1.66	0.43
1:A:75:LEU:CD2	1:A:158:ALA:HB2	2.48	0.43
1:B:70:GLN:H	1:B:70:GLN:CD	2.22	0.43
1:A:69:THR:HB	1:A:72:LEU:HB2	2.01	0.43
1:A:132:LEU:HD23	1:A:132:LEU:HA	1.86	0.43
1:A:78:LEU:HA	1:A:81:THR:OG1	2.19	0.42
1:B:205:ARG:NH2	3:B:1361:SOG:H1'2	2.35	0.42
1:B:104:ARG:HG3	1:B:108:LEU:HD11	2.01	0.42
1:A:346:SER:HA	1:A:347:PRO:HD3	1.92	0.42
1:A:75:LEU:HD13	1:A:149:TYR:OH	2.19	0.42
1:B:306:PHE:HB2	1:B:328:PHE:O	2.20	0.42
1:B:118:THR:HG21	1:B:201:PHE:CD1	2.54	0.42
1:B:119:SER:OG	1:B:177:ILE:HG21	2.20	0.42
1:A:50:LEU:O	1:A:53:LEU:HB3	2.20	0.41
1:A:100:THR:HG21	1:A:109:TRP:CZ2	2.51	0.41
1:B:75:LEU:HD13	1:B:149:TYR:OH	2.21	0.41
1:A:120:LEU:HD23	1:A:174:PHE:CE1	2.52	0.41
1:A:213:ILE:HA	1:A:217:TYR:HB2	2.02	0.41

Continued on next page...

Continued from previous page...

Atom-1	Atom-2	Interatomic distance (Å)	Clash overlap (Å)
1:B:122:VAL:CG1	1:B:173:SER:HB2	2.48	0.41
1:B:107:TRP:NE1	1:B:114:CYS:HB2	2.36	0.41
1:A:319:LEU:HA	1:A:319:LEU:HD12	1.97	0.40
1:A:162:ILE:O	1:A:166:TRP:HD1	2.04	0.40
1:B:78:LEU:HA	1:B:81:THR:OG1	2.21	0.40
1:B:58:GLY:O	1:B:61:LEU:HB3	2.21	0.40

There are no symmetry-related clashes.

5.3 Torsion angles [i](#)

5.3.1 Protein backbone [i](#)

In the following table, the Percentiles column shows the percent Ramachandran outliers of the chain as a percentile score with respect to all X-ray entries followed by that with respect to entries of similar resolution.

The Analysed column shows the number of residues for which the backbone conformation was analysed, and the total number of residues.

Mol	Chain	Analysed	Favoured	Allowed	Outliers	Percentiles	
1	A	284/313 (91%)	254 (89%)	26 (9%)	4 (1%)	11	40
1	B	288/313 (92%)	259 (90%)	25 (9%)	4 (1%)	11	40
All	All	572/626 (91%)	513 (90%)	51 (9%)	8 (1%)	11	40

All (8) Ramachandran outliers are listed below:

Mol	Chain	Res	Type
1	A	105	GLY
1	A	274	LYS
1	B	73	GLN
1	B	274	LYS
1	A	73	GLN
1	B	295	ILE
1	A	295	ILE
1	B	105	GLY

5.3.2 Protein sidechains [i](#)

In the following table, the Percentiles column shows the percent sidechain outliers of the chain as a percentile score with respect to all X-ray entries followed by that with respect to entries of similar resolution.

The Analysed column shows the number of residues for which the sidechain conformation was analysed, and the total number of residues.

Mol	Chain	Analysed	Rotameric	Outliers	Percentiles	
1	A	248/271 (92%)	232 (94%)	16 (6%)	17	46
1	B	251/271 (93%)	232 (92%)	19 (8%)	13	39
All	All	499/542 (92%)	464 (93%)	35 (7%)	15	43

All (35) residues with a non-rotameric sidechain are listed below:

Mol	Chain	Res	Type
1	A	40	TRP
1	A	50	LEU
1	A	69	THR
1	A	70	GLN
1	A	74	THR
1	A	81	THR
1	A	108	LEU
1	A	138	ASP
1	A	174	PHE
1	A	279	ARG
1	A	286	HIS
1	A	317	ARG
1	A	319	LEU
1	A	322	ASP
1	A	329	ASN
1	A	345	ARG
1	B	40	TRP
1	B	50	LEU
1	B	69	THR
1	B	70	GLN
1	B	74	THR
1	B	81	THR
1	B	108	LEU
1	B	128	SER
1	B	138	ASP
1	B	143	ILE
1	B	174	PHE

Continued on next page...

Continued from previous page...

Mol	Chain	Res	Type
1	B	279	ARG
1	B	286	HIS
1	B	313	ASN
1	B	317	ARG
1	B	319	LEU
1	B	329	ASN
1	B	345	ARG
1	B	348	ASP

Some sidechains can be flipped to improve hydrogen bonding and reduce clashes. There are no such sidechains identified.

5.3.3 RNA [i](#)

There are no RNA molecules in this entry.

5.4 Non-standard residues in protein, DNA, RNA chains [i](#)

There are no non-standard protein/DNA/RNA residues in this entry.

5.5 Carbohydrates [i](#)

There are no monosaccharides in this entry.

5.6 Ligand geometry [i](#)

5 ligands are modelled in this entry.

In the following table, the Counts columns list the number of bonds (or angles) for which Mogul statistics could be retrieved, the number of bonds (or angles) that are observed in the model and the number of bonds (or angles) that are defined in the Chemical Component Dictionary. The Link column lists molecule types, if any, to which the group is linked. The Z score for a bond length (or angle) is the number of standard deviations the observed value is removed from the expected value. A bond length (or angle) with $|Z| > 2$ is considered an outlier worth inspection. RMSZ is the root-mean-square of all Z scores of the bond lengths (or angles).

Mol	Type	Chain	Res	Link	Bond lengths			Bond angles		
					Counts	RMSZ	$\# Z > 2$	Counts	RMSZ	$\# Z > 2$
2	P32	A	1355	-	22,22,22	4.85	8 (36%)	25,31,31	1.64	3 (12%)
3	SOG	B	1361	-	20,20,20	1.48	3 (15%)	24,25,25	1.77	6 (25%)

Mol	Type	Chain	Res	Link	Bond lengths			Bond angles		
					Counts	RMSZ	# Z > 2	Counts	RMSZ	# Z > 2
3	SOG	B	1360	-	20,20,20	1.35	3 (15%)	24,25,25	1.83	7 (29%)
2	P32	B	1359	-	22,22,22	4.60	8 (36%)	25,31,31	1.61	4 (16%)
3	SOG	B	1362	-	20,20,20	1.39	2 (10%)	24,25,25	1.34	3 (12%)

In the following table, the Chirals column lists the number of chiral outliers, the number of chiral centers analysed, the number of these observed in the model and the number defined in the Chemical Component Dictionary. Similar counts are reported in the Torsion and Rings columns. '-' means no outliers of that kind were identified.

Mol	Type	Chain	Res	Link	Chirals	Torsions	Rings
2	P32	A	1355	-	-	1/11/21/21	0/2/2/2
3	SOG	B	1361	-	-	7/11/31/31	0/1/1/1
3	SOG	B	1360	-	-	6/11/31/31	0/1/1/1
2	P32	B	1359	-	-	0/11/21/21	0/2/2/2
3	SOG	B	1362	-	-	5/11/31/31	0/1/1/1

All (24) bond length outliers are listed below:

Mol	Chain	Res	Type	Atoms	Z	Observed(Å)	Ideal(Å)
2	B	1359	P32	C1-N1	9.65	1.51	1.32
2	A	1355	P32	C1-N1	9.50	1.50	1.32
2	A	1355	P32	C8-C3	9.34	1.53	1.39
2	A	1355	P32	C4-C3	9.33	1.53	1.40
2	B	1359	P32	C8-C3	8.88	1.52	1.39
2	A	1355	P32	C7-C8	8.62	1.53	1.39
2	B	1359	P32	C4-C3	8.40	1.52	1.40
2	B	1359	P32	C7-C8	7.68	1.52	1.39
2	A	1355	P32	C6-C5	7.37	1.54	1.38
2	B	1359	P32	C6-C5	7.17	1.54	1.38
2	A	1355	P32	C5-C4	6.68	1.53	1.39
2	A	1355	P32	C6-C7	6.67	1.53	1.38
2	B	1359	P32	C5-C4	6.49	1.53	1.39
2	B	1359	P32	C6-C7	6.38	1.52	1.38
3	B	1362	SOG	O5-C1	4.60	1.49	1.42
2	A	1355	P32	C8-N1	4.47	1.48	1.39
2	B	1359	P32	C8-N1	3.81	1.47	1.39
3	B	1361	SOG	C1-S1	3.55	1.86	1.80
3	B	1360	SOG	O5-C1	3.22	1.47	1.42
3	B	1361	SOG	O5-C1	3.03	1.47	1.42
3	B	1361	SOG	C1'-S1	2.67	1.84	1.81
3	B	1362	SOG	C1-S1	2.33	1.84	1.80

Continued on next page...

Continued from previous page...

Mol	Chain	Res	Type	Atoms	Z	Observed(Å)	Ideal(Å)
3	B	1360	SOG	C1-S1	2.31	1.84	1.80
3	B	1360	SOG	O5-C5	2.12	1.49	1.44

All (23) bond angle outliers are listed below:

Mol	Chain	Res	Type	Atoms	Z	Observed(°)	Ideal(°)
2	A	1355	P32	C2-C1-N1	-4.96	108.35	114.31
3	B	1362	SOG	O5-C1-C2	4.80	116.35	110.31
2	B	1359	P32	C2-C1-N1	-4.61	108.78	114.31
3	B	1361	SOG	C1'-S1-C1	4.49	108.49	100.09
3	B	1360	SOG	C4-C3-C2	4.30	118.33	110.82
2	A	1355	P32	C10-C11-N2	4.26	116.58	110.74
3	B	1360	SOG	O5-C1-S1	3.82	118.96	109.82
3	B	1361	SOG	C1-O5-C5	-3.80	105.57	112.58
3	B	1361	SOG	O5-C1-S1	3.33	117.79	109.82
3	B	1360	SOG	O5-C5-C6	3.24	114.50	106.44
3	B	1360	SOG	C3-C4-C5	3.15	115.86	110.24
2	B	1359	P32	O1-C4-C3	3.12	120.21	115.71
3	B	1361	SOG	C4-C3-C2	3.09	116.21	110.82
3	B	1362	SOG	O5-C5-C6	2.72	113.20	106.44
2	A	1355	P32	O1-C4-C3	2.71	119.61	115.71
2	B	1359	P32	C1-C16-N3	-2.68	174.46	177.54
3	B	1360	SOG	C1-C2-C3	2.54	115.61	110.59
3	B	1361	SOG	C1-C2-C3	2.50	115.53	110.59
3	B	1362	SOG	O5-C5-C4	-2.37	105.39	109.69
3	B	1360	SOG	C1'-S1-C1	2.31	104.42	100.09
3	B	1360	SOG	C6-C5-C4	-2.28	107.67	113.00
3	B	1361	SOG	O5-C5-C6	2.15	111.79	106.44
2	B	1359	P32	C11-N2-C12	2.11	118.79	116.54

There are no chirality outliers.

All (19) torsion outliers are listed below:

Mol	Chain	Res	Type	Atoms
3	B	1361	SOG	C2-C1-S1-C1'
3	B	1361	SOG	O5-C1-S1-C1'
3	B	1362	SOG	C2'-C1'-S1-C1
3	B	1361	SOG	C4-C5-C6-O6
3	B	1360	SOG	C1'-C2'-C3'-C4'
3	B	1361	SOG	S1-C1'-C2'-C3'
3	B	1361	SOG	C1'-C2'-C3'-C4'
3	B	1362	SOG	C2'-C3'-C4'-C5'

Continued on next page...

Continued from previous page...

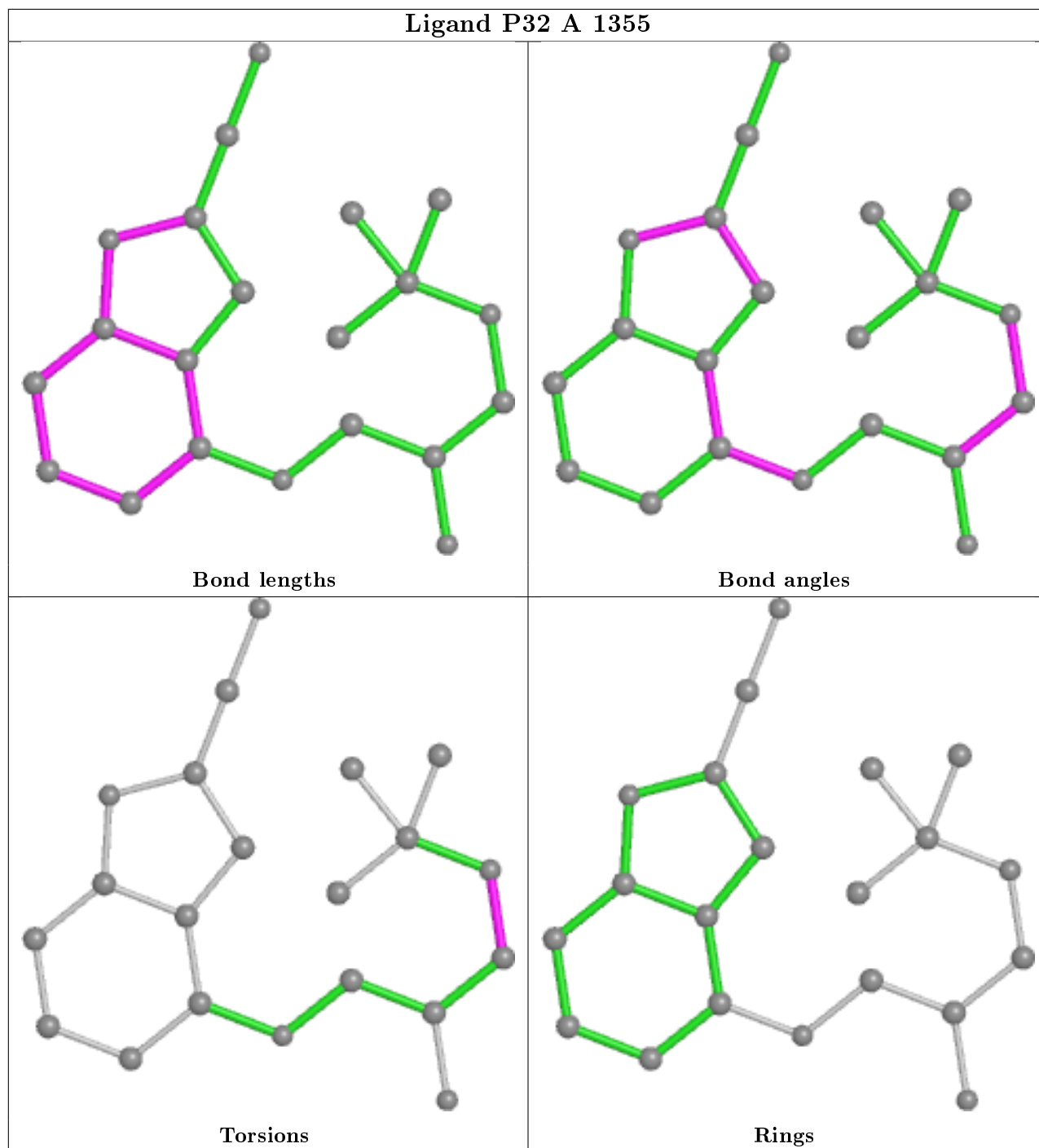
Mol	Chain	Res	Type	Atoms
3	B	1362	SOG	C3'-C4'-C5'-C6'
3	B	1361	SOG	O5-C5-C6-O6
3	B	1360	SOG	C4'-C5'-C6'-C7'
3	B	1362	SOG	C4'-C5'-C6'-C7'
3	B	1360	SOG	C3'-C4'-C5'-C6'
3	B	1360	SOG	O5-C5-C6-O6
3	B	1362	SOG	C5'-C6'-C7'-C8'
3	B	1361	SOG	C3'-C4'-C5'-C6'
2	A	1355	P32	C10-C11-N2-C12
3	B	1360	SOG	C2'-C3'-C4'-C5'
3	B	1360	SOG	S1-C1'-C2'-C3'

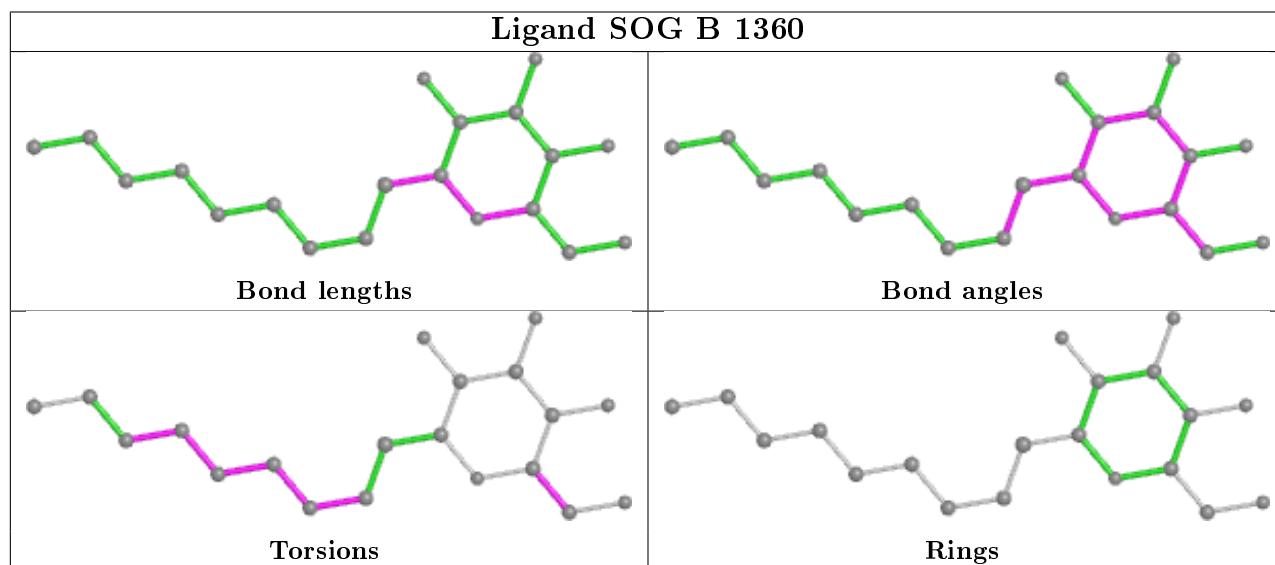
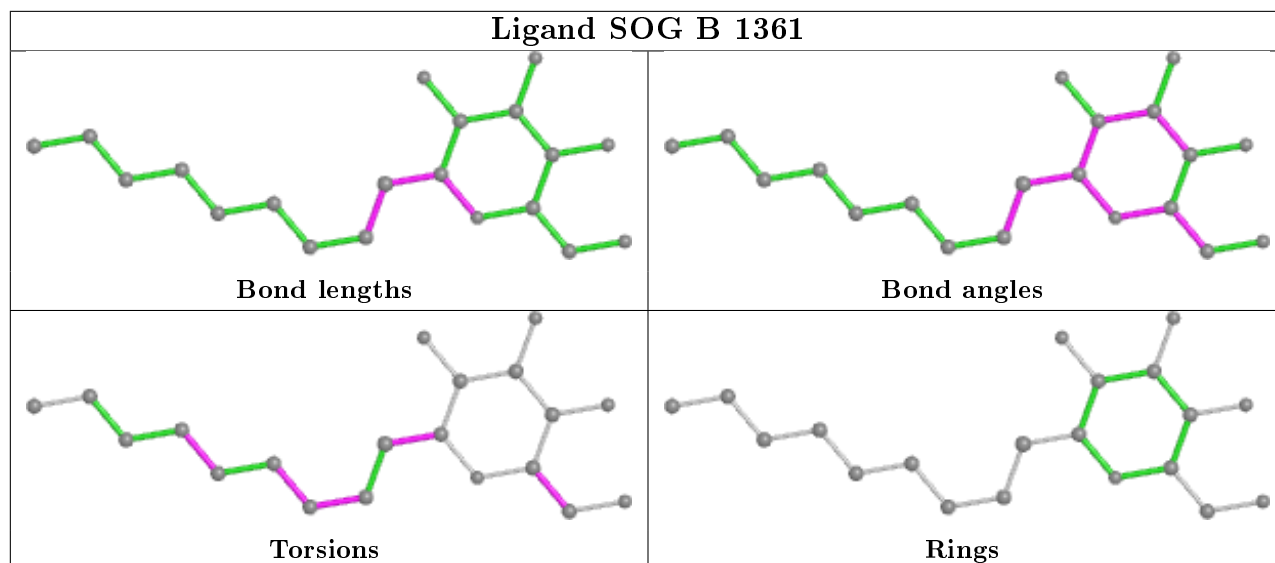
There are no ring outliers.

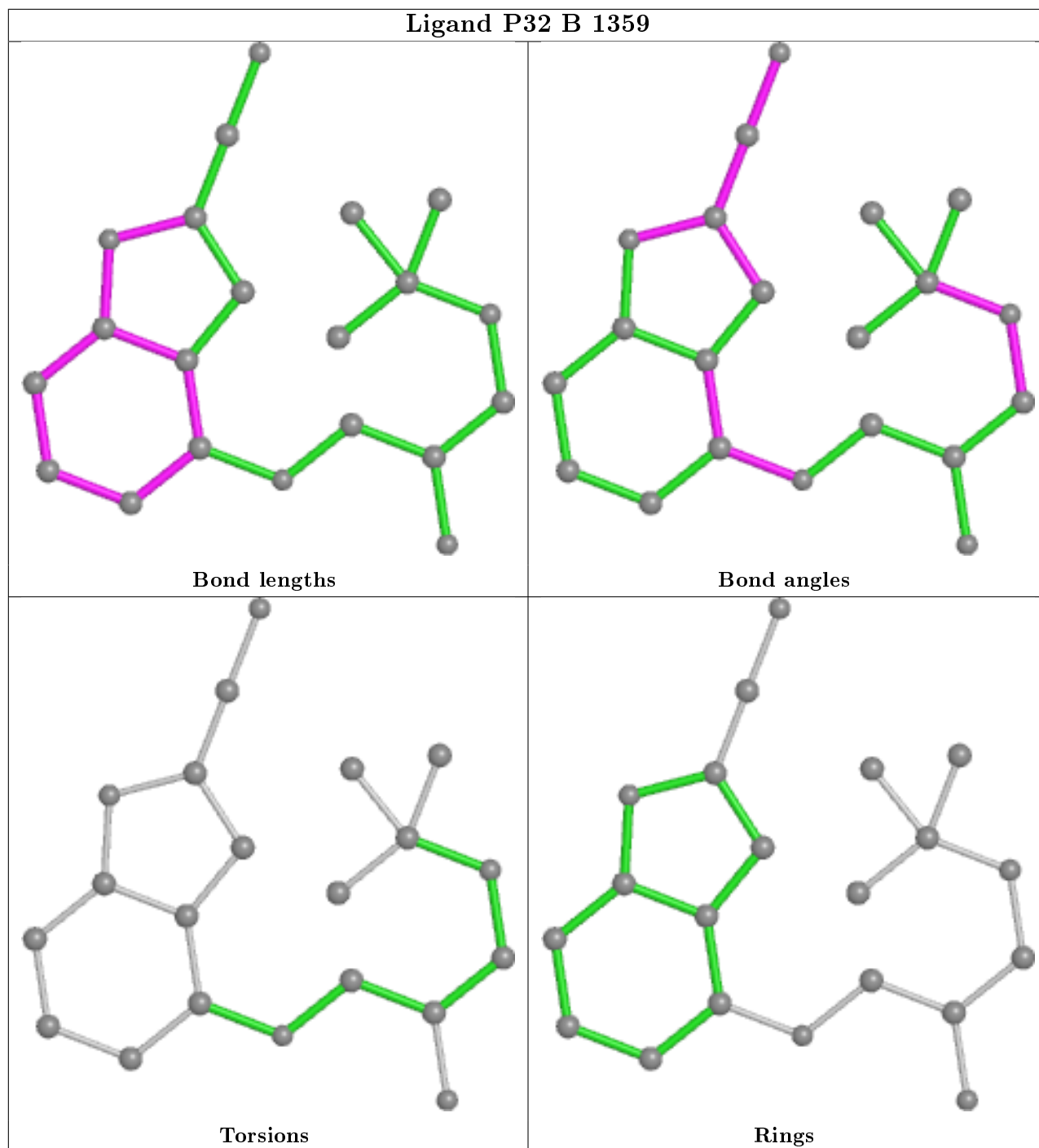
4 monomers are involved in 10 short contacts:

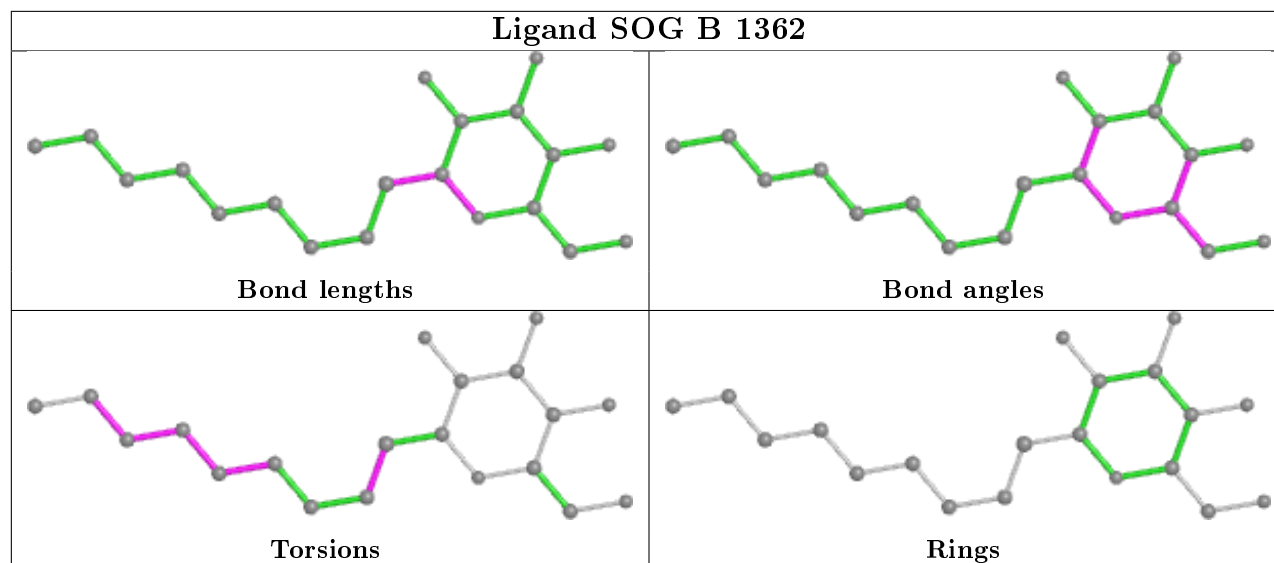
Mol	Chain	Res	Type	Clashes	Symm-Clashes
2	A	1355	P32	3	0
3	B	1361	SOG	3	0
2	B	1359	P32	3	0
3	B	1362	SOG	1	0

The following is a two-dimensional graphical depiction of Mogul quality analysis of bond lengths, bond angles, torsion angles, and ring geometry for all instances of the Ligand of Interest. In addition, ligands with molecular weight > 250 and outliers as shown on the validation Tables will also be included. For torsion angles, if less than 5% of the Mogul distribution of torsion angles is within 10 degrees of the torsion angle in question, then that torsion angle is considered an outlier. Any bond that is central to one or more torsion angles identified as an outlier by Mogul will be highlighted in the graph. For rings, the root-mean-square deviation (RMSD) between the ring in question and similar rings identified by Mogul is calculated over all ring torsion angles. If the average RMSD is greater than 60 degrees and the minimal RMSD between the ring in question and any Mogul-identified rings is also greater than 60 degrees, then that ring is considered an outlier. The outliers are highlighted in purple. The color gray indicates Mogul did not find sufficient equivalents in the CSD to analyse the geometry.









5.7 Other polymers [i](#)

There are no such residues in this entry.

5.8 Polymer linkage issues [i](#)

There are no chain breaks in this entry.

6 Fit of model and data

6.1 Protein, DNA and RNA chains

In the following table, the column labelled ‘#RSRZ> 2’ contains the number (and percentage) of RSRZ outliers, followed by percent RSRZ outliers for the chain as percentile scores relative to all X-ray entries and entries of similar resolution. The OWAB column contains the minimum, median, 95th percentile and maximum values of the occupancy-weighted average B-factor per residue. The column labelled ‘Q< 0.9’ lists the number of (and percentage) of residues with an average occupancy less than 0.9.

Mol	Chain	Analysed	<RSRZ>	#RSRZ>2	OWAB(Å ²)	Q<0.9
1	A	286/313 (91%)	0.54	27 (9%) 8 9	39, 60, 95, 123	0
1	B	290/313 (92%)	0.34	14 (4%) 30 28	40, 60, 97, 125	0
All	All	576/626 (92%)	0.44	41 (7%) 16 15	39, 60, 96, 125	0

All (41) RSRZ outliers are listed below:

Mol	Chain	Res	Type	RSRZ
1	A	45	SER	6.2
1	B	242	ASP	5.7
1	B	347	PRO	4.7
1	A	69	THR	4.5
1	B	355	ARG	4.5
1	B	354	LYS	4.1
1	A	46	LEU	4.1
1	A	42	ALA	4.0
1	B	348	ASP	3.7
1	A	39	GLN	3.7
1	A	44	MET	3.5
1	A	276	LYS	3.4
1	A	65	ALA	3.3
1	A	273	SER	3.3
1	A	275	ARG	3.1
1	A	40	TRP	3.1
1	B	346	SER	3.0
1	A	352	ALA	2.9
1	B	352	ALA	2.9
1	B	345	ARG	2.9
1	A	49	ALA	2.8
1	B	358	ALA	2.8
1	A	349	PHE	2.8
1	B	40	TRP	2.8

Continued on next page...

Continued from previous page...

Mol	Chain	Res	Type	RSRZ
1	A	97	PHE	2.7
1	A	103	VAL	2.7
1	A	41	GLU	2.6
1	B	283	MET	2.5
1	B	69	THR	2.5
1	B	356	LEU	2.4
1	A	347	PRO	2.4
1	B	274	LYS	2.4
1	A	242	ASP	2.4
1	A	68	SER	2.4
1	A	104	ARG	2.4
1	A	113	LEU	2.4
1	A	348	ASP	2.4
1	A	64	ALA	2.3
1	A	43	GLY	2.2
1	A	279	ARG	2.1
1	A	274	LYS	2.0

6.2 Non-standard residues in protein, DNA, RNA chains [i](#)

There are no non-standard protein/DNA/RNA residues in this entry.

6.3 Carbohydrates [i](#)

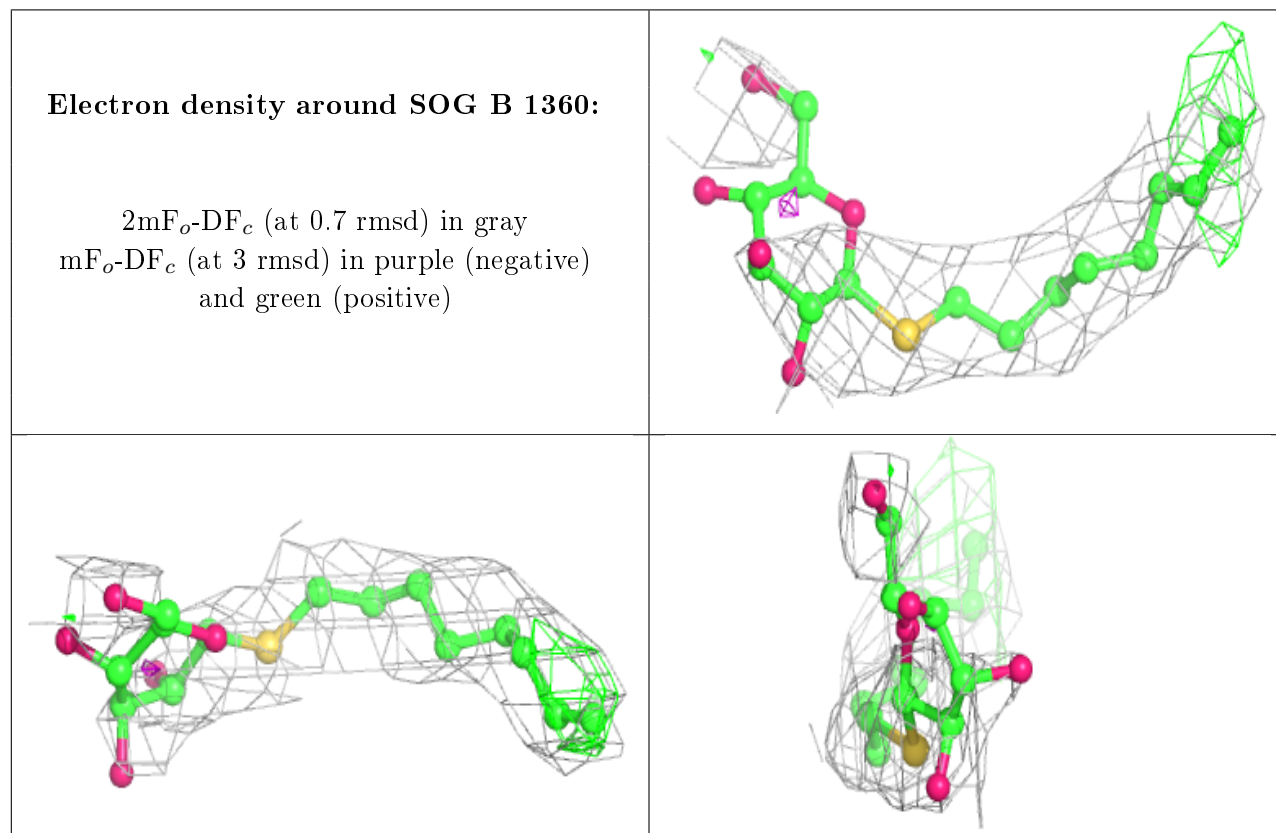
There are no monosaccharides in this entry.

6.4 Ligands [i](#)

In the following table, the Atoms column lists the number of modelled atoms in the group and the number defined in the chemical component dictionary. The B-factors column lists the minimum, median, 95th percentile and maximum values of B factors of atoms in the group. The column labelled 'Q< 0.9' lists the number of atoms with occupancy less than 0.9.

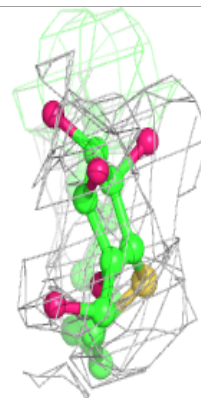
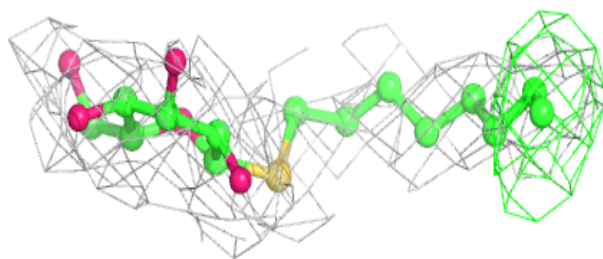
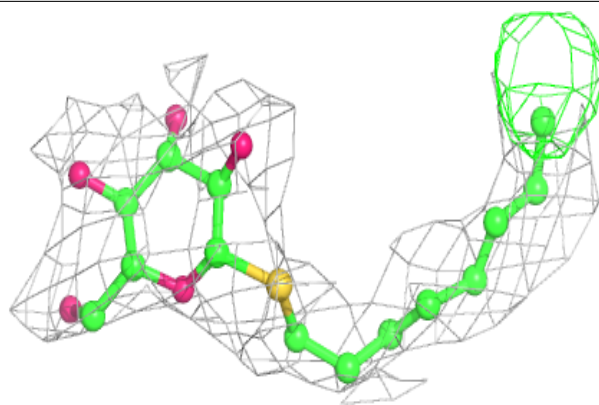
Mol	Type	Chain	Res	Atoms	RSCC	RSR	B-factors(Å ²)	Q<0.9
3	SOG	B	1360	20/20	0.59	0.63	85,106,108,108	0
3	SOG	B	1361	20/20	0.61	0.28	113,120,121,121	0
3	SOG	B	1362	20/20	0.74	0.34	95,103,105,106	0
2	P32	B	1359	21/21	0.93	0.27	33,37,39,43	0
2	P32	A	1355	21/21	0.93	0.26	53,54,58,58	0

The following is a graphical depiction of the model fit to experimental electron density of all instances of the Ligand of Interest. In addition, ligands with molecular weight > 250 and outliers as shown on the geometry validation Tables will also be included. Each fit is shown from different orientation to approximate a three-dimensional view.

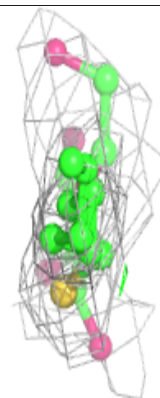
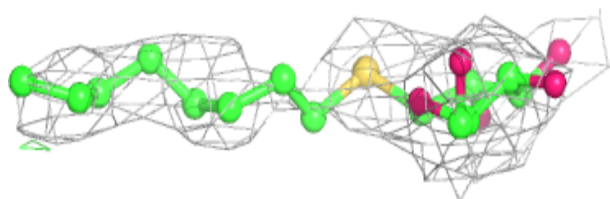
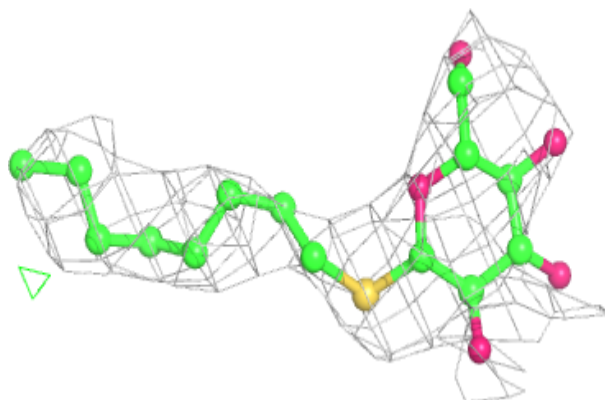


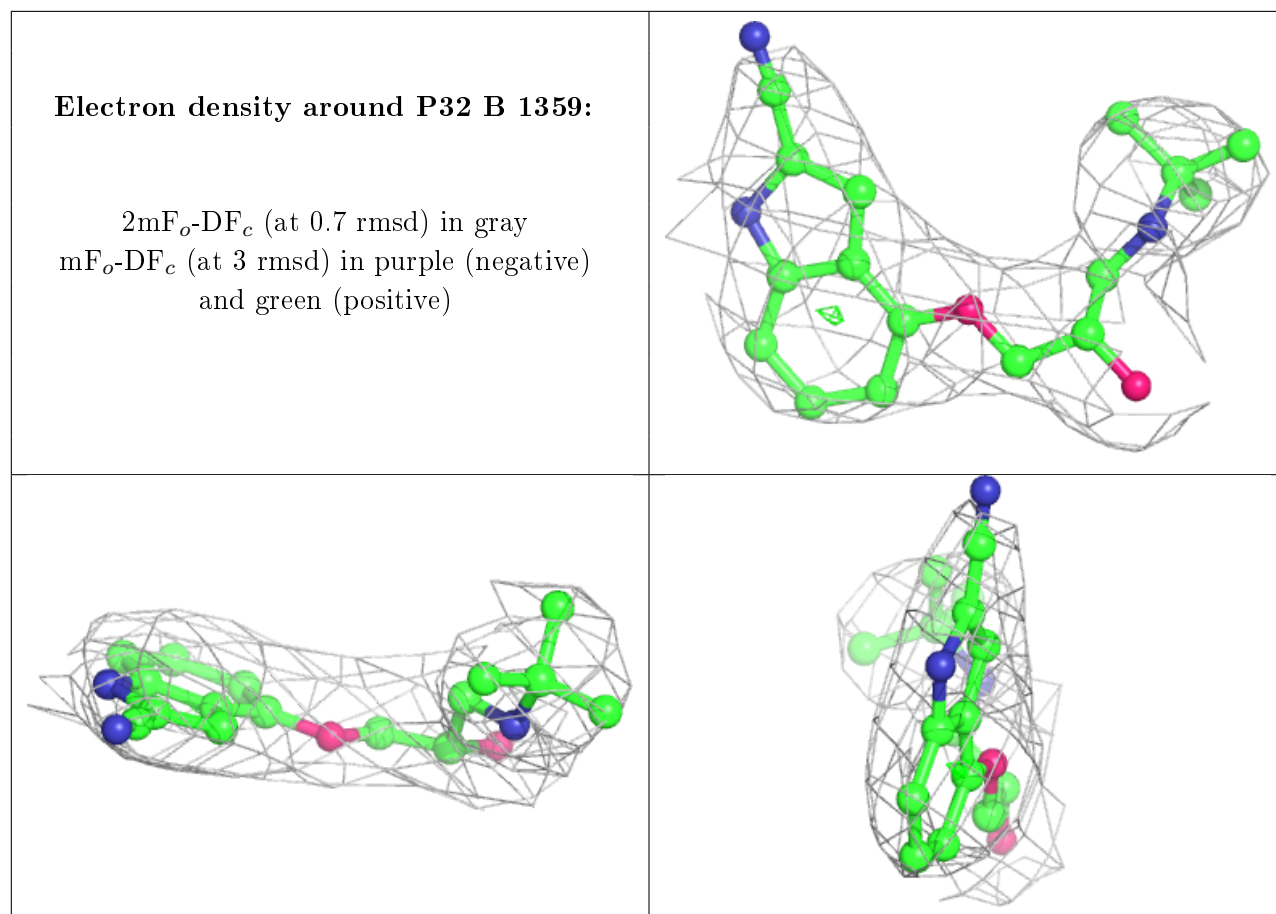
Electron density around SOG B 1361:

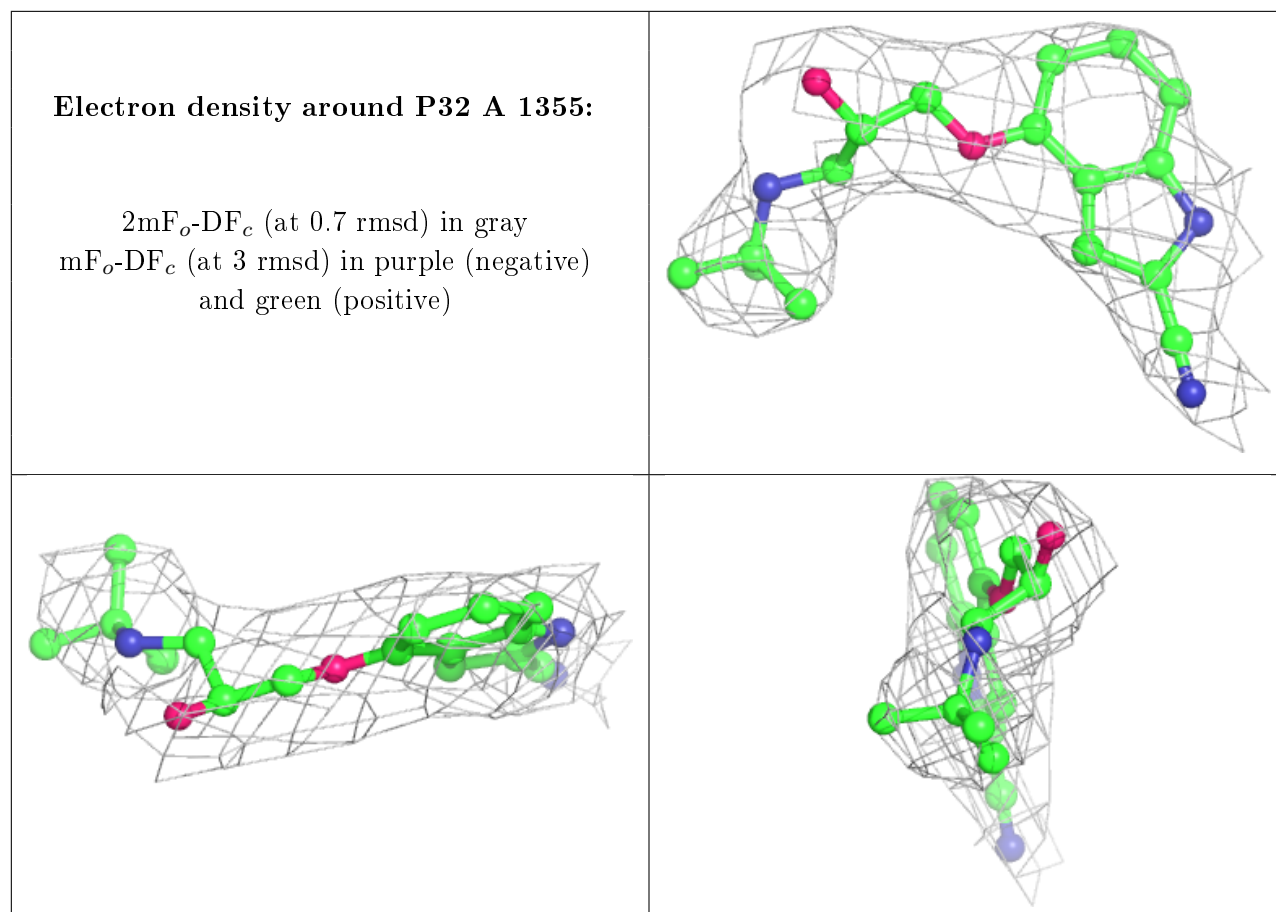
$2mF_o-DF_c$ (at 0.7 rmsd) in gray
 mF_o-DF_c (at 3 rmsd) in purple (negative)
and green (positive)

**Electron density around SOG B 1362:**

$2mF_o-DF_c$ (at 0.7 rmsd) in gray
 mF_o-DF_c (at 3 rmsd) in purple (negative)
and green (positive)







6.5 Other polymers [i](#)

There are no such residues in this entry.