



# Full wwPDB X-ray Structure Validation Report ⓘ

May 26, 2020 – 03:37 pm BST

PDB ID : 1YDR  
Title : STRUCTURE OF CAMP-DEPENDENT PROTEIN KINASE, ALPHA-CATALYTIC SUBUNIT IN COMPLEX WITH H7 PROTEIN KINASE INHIBITOR 1-(5-ISOQUINOLINESULFONYL)-2-METHYLPIPERAZINE  
Authors : Engh, R.A.; Girod, A.; Kinzel, V.; Huber, R.; Bossemeyer, D.  
Deposited on : 1996-07-24  
Resolution : 2.20 Å(reported)

This is a Full wwPDB X-ray Structure Validation Report for a publicly released PDB entry.

We welcome your comments at [validation@mail.wwpdb.org](mailto:validation@mail.wwpdb.org)

A user guide is available at

<https://www.wwpdb.org/validation/2017/XrayValidationReportHelp>

with specific help available everywhere you see the ⓘ symbol.

---

The following versions of software and data (see [references ⓘ](#)) were used in the production of this report:

MolProbity : 4.02b-467  
Mogul : 1.8.5 (274361), CSD as541be (2020)  
Xtriage (Phenix) : 1.13  
EDS : 2.11  
buster-report : 1.1.7 (2018)  
Percentile statistics : 20191225.v01 (using entries in the PDB archive December 25th 2019)  
Refmac : 5.8.0158  
CCP4 : 7.0.044 (Gargrove)  
Ideal geometry (proteins) : Engh & Huber (2001)  
Ideal geometry (DNA, RNA) : Parkinson et al. (1996)  
Validation Pipeline (wwPDB-VP) : 2.11

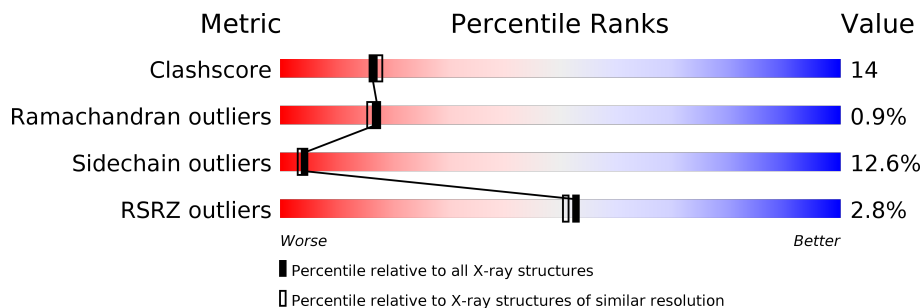
# 1 Overall quality at a glance

The following experimental techniques were used to determine the structure:

*X-RAY DIFFRACTION*

The reported resolution of this entry is 2.20 Å.

Percentile scores (ranging between 0-100) for global validation metrics of the entry are shown in the following graphic. The table shows the number of entries on which the scores are based.



Metric	Whole archive (#Entries)	Similar resolution (#Entries, resolution range(Å))
Clashscore	141614	5594 (2.20-2.20)
Ramachandran outliers	138981	5503 (2.20-2.20)
Sidechain outliers	138945	5504 (2.20-2.20)
RSRZ outliers	127900	4800 (2.20-2.20)

The table below summarises the geometric issues observed across the polymeric chains and their fit to the electron density. The red, orange, yellow and green segments on the lower bar indicate the fraction of residues that contain outliers for  $\geq 3$ , 2, 1 and 0 types of geometric quality criteria respectively. A grey segment represents the fraction of residues that are not modelled. The numeric value for each fraction is indicated below the corresponding segment, with a dot representing fractions  $\leq 5\%$ . The upper red bar (where present) indicates the fraction of residues that have poor fit to the electron density. The numeric value is given above the bar.

Mol	Chain	Length	Quality of chain
1	E	350	 2% 66% 23% 7%
2	I	20	 10% 80% 15% 5%

## 2 Entry composition

There are 4 unique types of molecules in this entry. The entry contains 2973 atoms, of which 0 are hydrogens and 0 are deuteriums.

In the tables below, the ZeroOcc column contains the number of atoms modelled with zero occupancy, the AltConf column contains the number of residues with at least one atom in alternate conformation and the Trace column contains the number of residues modelled with at most 2 atoms.

- Molecule 1 is a protein called C-AMP-DEPENDENT PROTEIN KINASE.

Mol	Chain	Residues	Atoms						ZeroOcc	AltConf	Trace
			Total	C	N	O	P	S			
1	E	336	2778	1801	465	501	2	9	0	0	0

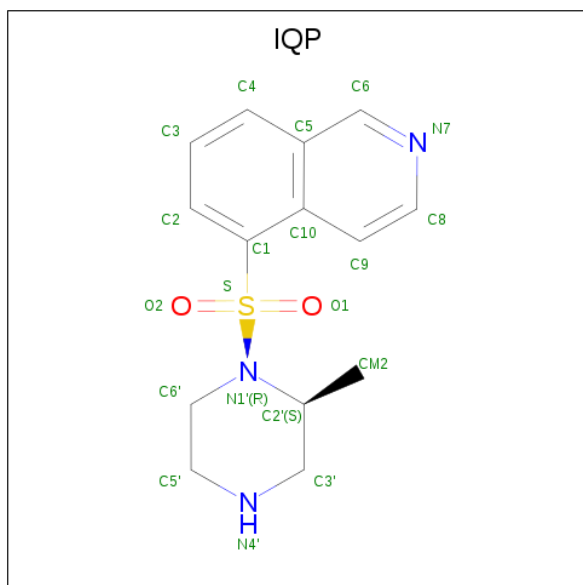
There are 4 discrepancies between the modelled and reference sequences:

Chain	Residue	Modelled	Actual	Comment	Reference
E	124	ALA	PRO	CONFLICT	UNP P00517
E	197	TPO	THR	MODIFIED RESIDUE	UNP P00517
E	286	ASP	ASN	CONFLICT	UNP P00517
E	338	SEP	SER	MODIFIED RESIDUE	UNP P00517

- Molecule 2 is a protein called PROTEIN KINASE INHIBITOR PEPTIDE.

Mol	Chain	Residues	Atoms				ZeroOcc	AltConf	Trace
			Total	C	N	O			
2	I	20	157	94	32	31	0	0	0

- Molecule 3 is 1-(5-ISOQUINOLINESULFONYL)-2-METHYLPYPERAZINE (three-letter code: IQP) (formula: C<sub>14</sub>H<sub>17</sub>N<sub>3</sub>O<sub>2</sub>S).



Mol	Chain	Residues	Atoms					ZeroOcc	AltConf
			Total	C	N	O	S		
3	E	1	20	14	3	2	1	0	0

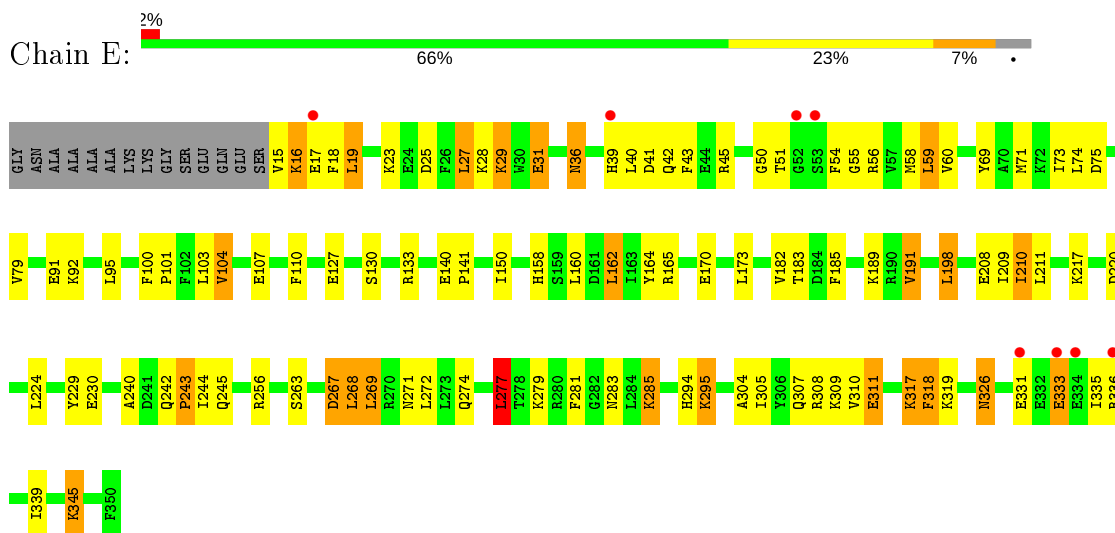
- Molecule 4 is water.

Mol	Chain	Residues	Atoms		ZeroOcc	AltConf
4	E	14	Total	O	0	0
			14	14		
4	I	4	Total	O	0	0
			4	4		

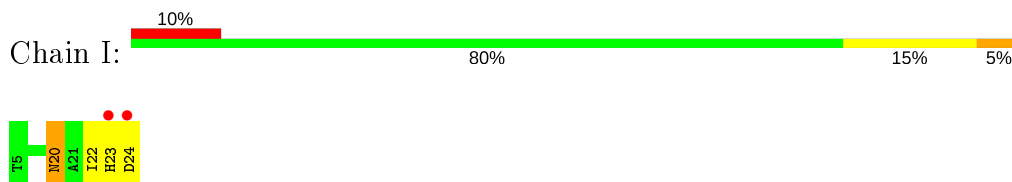
### 3 Residue-property plots [i](#)

These plots are drawn for all protein, RNA and DNA chains in the entry. The first graphic for a chain summarises the proportions of the various outlier classes displayed in the second graphic. The second graphic shows the sequence view annotated by issues in geometry and electron density. Residues are color-coded according to the number of geometric quality criteria for which they contain at least one outlier: green = 0, yellow = 1, orange = 2 and red = 3 or more. A red dot above a residue indicates a poor fit to the electron density ( $RSRZ > 2$ ). Stretches of 2 or more consecutive residues without any outlier are shown as a green connector. Residues present in the sample, but not in the model, are shown in grey.

- Molecule 1: C-AMP-DEPENDENT PROTEIN KINASE



- Molecule 2: PROTEIN KINASE INHIBITOR PEPTIDE



## 4 Data and refinement statistics

Property	Value	Source
Space group	P 21 21 21	Depositor
Cell constants a, b, c, $\alpha$ , $\beta$ , $\gamma$	73.58Å 76.28Å 80.58Å 90.00° 90.00° 90.00°	Depositor
Resolution (Å)	6.00 – 2.20 9.34 – 2.00	Depositor EDS
% Data completeness (in resolution range)	(Not available) (6.00-2.20) 67.1 (9.34-2.00)	Depositor EDS
$R_{merge}$	(Not available)	Depositor
$R_{sym}$	(Not available)	Depositor
$\langle I/\sigma(I) \rangle$ <sup>1</sup>	1.42 (at 2.00Å)	Xtrriage
Refinement program	X-PLOR	Depositor
R, $R_{free}$	0.188 , (Not available) 0.198 , (Not available)	Depositor DCC
$R_{free}$ test set	No test flags present.	wwPDB-VP
Wilson B-factor (Å <sup>2</sup> )	28.4	Xtrriage
Anisotropy	0.105	Xtrriage
Bulk solvent $k_{sol}$ (e/Å <sup>3</sup> ), $B_{sol}$ (Å <sup>2</sup> )	0.47 , 93.2	EDS
L-test for twinning <sup>2</sup>	$\langle  L  \rangle = 0.48$ , $\langle L^2 \rangle = 0.32$	Xtrriage
Estimated twinning fraction	0.022 for k,h,-l	Xtrriage
$F_o, F_c$ correlation	0.94	EDS
Total number of atoms	2973	wwPDB-VP
Average B, all atoms (Å <sup>2</sup> )	30.0	wwPDB-VP

Xtrriage's analysis on translational NCS is as follows: *The largest off-origin peak in the Patterson function is 6.21% of the height of the origin peak. No significant pseudotranslation is detected.*

<sup>1</sup>Intensities estimated from amplitudes.

<sup>2</sup>Theoretical values of  $\langle |L| \rangle$ ,  $\langle L^2 \rangle$  for acentric reflections are 0.5, 0.333 respectively for untwinned datasets, and 0.375, 0.2 for perfectly twinned datasets.

## 5 Model quality [i](#)

### 5.1 Standard geometry [i](#)

Bond lengths and bond angles in the following residue types are not validated in this section: TPO, IQP, SEP

The Z score for a bond length (or angle) is the number of standard deviations the observed value is removed from the expected value. A bond length (or angle) with  $|Z| > 5$  is considered an outlier worth inspection. RMSZ is the root-mean-square of all Z scores of the bond lengths (or angles).

Mol	Chain	Bond lengths		Bond angles	
		RMSZ	# Z  >5	RMSZ	# Z  >5
1	E	0.63	0/2827	0.81	3/3807 (0.1%)
2	I	0.53	0/159	0.76	0/212
All	All	0.62	0/2986	0.80	3/4019 (0.1%)

There are no bond length outliers.

All (3) bond angle outliers are listed below:

Mol	Chain	Res	Type	Atoms	Z	Observed(°)	Ideal(°)
1	E	277	LEU	CA-CB-CG	5.82	128.68	115.30
1	E	191	VAL	CB-CA-C	-5.29	101.34	111.40
1	E	59	LEU	N-CA-C	-5.21	96.93	111.00

There are no chirality outliers.

There are no planarity outliers.

### 5.2 Too-close contacts [i](#)

In the following table, the Non-H and H(model) columns list the number of non-hydrogen atoms and hydrogen atoms in the chain respectively. The H(added) column lists the number of hydrogen atoms added and optimized by MolProbity. The Clashes column lists the number of clashes within the asymmetric unit, whereas Symm-Clashes lists symmetry related clashes.

Mol	Chain	Non-H	H(model)	H(added)	Clashes	Symm-Clashes
1	E	2778	0	2757	80	0
2	I	157	0	146	4	0
3	E	20	0	17	3	0
4	E	14	0	0	1	0
4	I	4	0	0	0	0
All	All	2973	0	2920	84	0

The all-atom clashscore is defined as the number of clashes found per 1000 atoms (including hydrogen atoms). The all-atom clashscore for this structure is 14.

All (84) close contacts within the same asymmetric unit are listed below, sorted by their clash magnitude.

Atom-1	Atom-2	Interatomic distance (Å)	Clash overlap (Å)
1:E:56:ARG:HH12	1:E:333:GLU:HB2	1.25	0.94
1:E:27:LEU:O	1:E:31:GLU:HG2	1.80	0.80
1:E:345:LYS:H	1:E:345:LYS:HD2	1.48	0.79
1:E:242:GLN:HG2	1:E:245:GLN:OE1	1.86	0.76
1:E:319:LYS:HD2	1:E:319:LYS:H	1.51	0.75
1:E:56:ARG:NH1	1:E:333:GLU:HB2	2.04	0.70
1:E:305:ILE:HG13	1:E:310:VAL:HG21	1.77	0.67
1:E:317:LYS:HE3	1:E:318:PHE:H	1.62	0.64
1:E:43:PHE:HB3	1:E:60:VAL:HG22	1.78	0.64
1:E:69:TYR:CE1	1:E:107:GLU:HG3	2.32	0.64
1:E:170:GLU:O	3:E:351:IQP:H5'1	1.97	0.64
1:E:54:PHE:CD2	1:E:79:VAL:HG22	2.33	0.64
1:E:242:GLN:HG3	1:E:244:ILE:HG12	1.79	0.63
1:E:295:LYS:H	1:E:295:LYS:HD3	1.61	0.63
1:E:310:VAL:HG12	1:E:311:GLU:N	2.14	0.63
1:E:43:PHE:HB3	1:E:60:VAL:CG2	2.28	0.63
1:E:242:GLN:HG2	1:E:245:GLN:HG3	1.82	0.62
1:E:55:GLY:HA3	1:E:73:ILE:O	2.02	0.60
1:E:198:LEU:HD23	1:E:209:ILE:HG22	1.84	0.59
1:E:319:LYS:HD2	1:E:319:LYS:N	2.16	0.58
1:E:71:MET:HE1	1:E:110:PHE:HZ	1.68	0.57
1:E:56:ARG:HH12	1:E:333:GLU:CB	2.10	0.56
1:E:158:HIS:HE1	1:E:220:ASP:OD2	1.90	0.54
1:E:150:ILE:HG21	1:E:224:LEU:HD13	1.89	0.53
1:E:240:ALA:CB	1:E:245:GLN:HB2	2.39	0.53
1:E:140:GLU:HB2	1:E:141:PRO:HD3	1.91	0.53
1:E:164:TYR:O	1:E:165:ARG:HB2	2.09	0.53
1:E:285:LYS:HZ3	1:E:285:LYS:H	1.56	0.52
1:E:304:ALA:HA	1:E:309:LYS:HE2	1.91	0.52
1:E:23:LYS:HG2	1:E:27:LEU:HD22	1.91	0.52
1:E:50:GLY:HA3	3:E:351:IQP:HM23	1.91	0.52
1:E:285:LYS:N	1:E:285:LYS:HD2	2.25	0.52
1:E:75:ASP:O	1:E:79:VAL:HG23	2.09	0.52
1:E:285:LYS:H	1:E:285:LYS:HD2	1.74	0.51
1:E:50:GLY:HA3	3:E:351:IQP:CM2	2.41	0.51
1:E:45:ARG:HG3	1:E:58:MET:SD	2.51	0.50
1:E:345:LYS:N	1:E:345:LYS:HD2	2.23	0.50

*Continued on next page...*



*Continued from previous page...*

Atom-1	Atom-2	Interatomic distance (Å)	Clash overlap (Å)
1:E:310:VAL:CG1	1:E:311:GLU:N	2.74	0.50
1:E:54:PHE:HD2	1:E:79:VAL:HG22	1.78	0.48
2:I:23:HIS:CD2	2:I:24:ASP:H	2.31	0.48
1:E:23:LYS:HG2	1:E:27:LEU:CD2	2.43	0.48
1:E:307:GLN:O	1:E:308:ARG:HB2	2.13	0.48
1:E:345:LYS:CD	1:E:345:LYS:H	2.16	0.48
1:E:18:PHE:HD2	1:E:19:LEU:HD13	1.78	0.48
2:I:20:ASN:HD22	2:I:20:ASN:N	2.11	0.48
1:E:244:ILE:HG13	1:E:245:GLN:N	2.29	0.47
1:E:15:VAL:N	1:E:17:GLU:OE1	2.47	0.47
1:E:173:LEU:HD12	1:E:183:THR:HG21	1.97	0.47
2:I:23:HIS:CD2	2:I:24:ASP:N	2.83	0.47
1:E:104:VAL:HG22	1:E:182:VAL:O	2.15	0.47
1:E:242:GLN:HG2	1:E:245:GLN:CG	2.45	0.46
1:E:100:PHE:CD1	1:E:101:PRO:HD2	2.51	0.46
1:E:133:ARG:NH2	1:E:230:GLU:OE2	2.48	0.46
1:E:267:ASP:OD1	1:E:295:LYS:HE2	2.16	0.45
1:E:173:LEU:CD1	1:E:183:THR:HG21	2.46	0.45
1:E:45:ARG:NH1	1:E:335:ILE:HG12	2.31	0.45
1:E:16:LYS:HE3	1:E:16:LYS:HA	1.98	0.45
2:I:22:ILE:O	2:I:22:ILE:HG13	2.17	0.44
1:E:271:ASN:HB3	1:E:281:PHE:CG	2.52	0.44
1:E:162:LEU:O	1:E:217:LYS:HE3	2.18	0.44
1:E:150:ILE:CG2	1:E:224:LEU:HD13	2.48	0.43
1:E:242:GLN:CG	1:E:245:GLN:HG3	2.48	0.43
1:E:256:ARG:HB3	1:E:256:ARG:CZ	2.48	0.43
1:E:91:GLU:O	1:E:95:LEU:HB2	2.18	0.43
1:E:211:LEU:HA	1:E:211:LEU:HD23	1.86	0.43
1:E:43:PHE:HB3	1:E:60:VAL:HG21	2.00	0.43
1:E:189:LYS:HG2	1:E:191:VAL:HG22	2.00	0.42
1:E:39:HIS:HB2	1:E:42:GLN:HE21	1.83	0.42
1:E:71:MET:CE	1:E:110:PHE:HZ	2.31	0.42
1:E:345:LYS:HB3	1:E:345:LYS:HE3	1.84	0.42
1:E:317:LYS:HA	1:E:317:LYS:HD2	1.92	0.42
1:E:269:LEU:HA	1:E:269:LEU:HD12	1.85	0.42
1:E:274:GLN:HG2	1:E:279:LYS:C	2.41	0.41
1:E:339:ILE:H	1:E:339:ILE:HG13	1.74	0.41
1:E:210:ILE:HD12	1:E:210:ILE:O	2.20	0.41
1:E:268:LEU:HB2	1:E:294:HIS:CE1	2.56	0.41
1:E:127:GLU:HG3	4:E:420:HOH:O	2.21	0.41
1:E:25:ASP:O	1:E:29:LYS:HD2	2.21	0.41

*Continued on next page...*

Continued from previous page...

Atom-1	Atom-2	Interatomic distance (Å)	Clash overlap (Å)
1:E:242:GLN:HG2	1:E:245:GLN:CD	2.41	0.41
1:E:256:ARG:HH11	1:E:256:ARG:HG3	1.87	0.40
1:E:31:GLU:HG2	1:E:31:GLU:H	1.75	0.40
1:E:326:ASN:H	1:E:326:ASN:ND2	2.19	0.40
1:E:103:LEU:HD22	1:E:185:PHE:HZ	1.87	0.40
1:E:277:LEU:O	1:E:283:ASN:ND2	2.51	0.40

There are no symmetry-related clashes.

## 5.3 Torsion angles [i](#)

### 5.3.1 Protein backbone [i](#)

In the following table, the Percentiles column shows the percent Ramachandran outliers of the chain as a percentile score with respect to all X-ray entries followed by that with respect to entries of similar resolution.

The Analysed column shows the number of residues for which the backbone conformation was analysed, and the total number of residues.

Mol	Chain	Analysed	Favoured	Allowed	Outliers	Percentiles	
1	E	332/350 (95%)	318 (96%)	11 (3%)	3 (1%)	17	16
2	I	18/20 (90%)	16 (89%)	2 (11%)	0	100	100
All	All	350/370 (95%)	334 (95%)	13 (4%)	3 (1%)	17	16

All (3) Ramachandran outliers are listed below:

Mol	Chain	Res	Type
1	E	36	ASN
1	E	277	LEU
1	E	243	PRO

### 5.3.2 Protein sidechains [i](#)

In the following table, the Percentiles column shows the percent sidechain outliers of the chain as a percentile score with respect to all X-ray entries followed by that with respect to entries of similar resolution.

The Analysed column shows the number of residues for which the sidechain conformation was analysed, and the total number of residues.

Mol	Chain	Analysed	Rotameric	Outliers	Percentiles	
1	E	294/302 (97%)	256 (87%)	38 (13%)	4	3
2	I	15/15 (100%)	14 (93%)	1 (7%)	16	18
All	All	309/317 (98%)	270 (87%)	39 (13%)	4	3

All (39) residues with a non-rotameric sidechain are listed below:

Mol	Chain	Res	Type
1	E	16	LYS
1	E	19	LEU
1	E	27	LEU
1	E	28	LYS
1	E	29	LYS
1	E	31	GLU
1	E	36	ASN
1	E	40	LEU
1	E	41	ASP
1	E	51	THR
1	E	59	LEU
1	E	74	LEU
1	E	92	LYS
1	E	104	VAL
1	E	130	SER
1	E	160	LEU
1	E	162	LEU
1	E	198	LEU
1	E	208	GLU
1	E	210	ILE
1	E	229	TYR
1	E	243	PRO
1	E	263	SER
1	E	267	ASP
1	E	268	LEU
1	E	269	LEU
1	E	272	LEU
1	E	277	LEU
1	E	285	LYS
1	E	295	LYS
1	E	311	GLU
1	E	317	LYS
1	E	318	PHE
1	E	326	ASN
1	E	331	GLU

*Continued on next page...*

Continued from previous page...

Mol	Chain	Res	Type
1	E	333	GLU
1	E	336	ARG
1	E	345	LYS
2	I	20	ASN

Some sidechains can be flipped to improve hydrogen bonding and reduce clashes. All (8) such sidechains are listed below:

Mol	Chain	Res	Type
1	E	62	HIS
1	E	67	ASN
1	E	113	ASN
1	E	158	HIS
1	E	307	GLN
1	E	326	ASN
2	I	20	ASN
2	I	23	HIS

### 5.3.3 RNA [i](#)

There are no RNA molecules in this entry.

## 5.4 Non-standard residues in protein, DNA, RNA chains [i](#)

2 non-standard protein/DNA/RNA residues are modelled in this entry.

In the following table, the Counts columns list the number of bonds (or angles) for which Mogul statistics could be retrieved, the number of bonds (or angles) that are observed in the model and the number of bonds (or angles) that are defined in the Chemical Component Dictionary. The Link column lists molecule types, if any, to which the group is linked. The Z score for a bond length (or angle) is the number of standard deviations the observed value is removed from the expected value. A bond length (or angle) with  $|Z| > 2$  is considered an outlier worth inspection. RMSZ is the root-mean-square of all Z scores of the bond lengths (or angles).

Mol	Type	Chain	Res	Link	Bond lengths			Bond angles		
					Counts	RMSZ	$\# Z  > 2$	Counts	RMSZ	$\# Z  > 2$
1	SEP	E	338	1	8,9,10	0.93	0	8,12,14	2.17	3 (37%)
1	TPO	E	197	1	8,10,11	1.52	2 (25%)	10,14,16	1.41	1 (10%)

In the following table, the Chirals column lists the number of chiral outliers, the number of chiral centers analysed, the number of these observed in the model and the number defined in the Chemical Component Dictionary. Similar counts are reported in the Torsion and Rings columns.

'-' means no outliers of that kind were identified.

Mol	Type	Chain	Res	Link	Chirals	Torsions	Rings
1	SEP	E	338	1	-	2/5/8/10	-
1	TPO	E	197	1	-	2/9/11/13	-

All (2) bond length outliers are listed below:

Mol	Chain	Res	Type	Atoms	Z	Observed(Å)	Ideal(Å)
1	E	197	TPO	P-O2P	-2.73	1.44	1.54
1	E	197	TPO	P-OG1	2.21	1.63	1.59

All (4) bond angle outliers are listed below:

Mol	Chain	Res	Type	Atoms	Z	Observed(°)	Ideal(°)
1	E	338	SEP	O3P-P-OG	-3.41	97.66	106.73
1	E	338	SEP	O2P-P-OG	-3.24	98.10	106.73
1	E	338	SEP	O3P-P-O2P	2.94	118.85	107.64
1	E	197	TPO	O3P-P-O2P	2.90	118.72	107.64

There are no chirality outliers.

All (4) torsion outliers are listed below:

Mol	Chain	Res	Type	Atoms
1	E	197	TPO	O-C-CA-CB
1	E	197	TPO	CB-OG1-P-O3P
1	E	338	SEP	N-CA-CB-OG
1	E	338	SEP	CA-CB-OG-P

There are no ring outliers.

No monomer is involved in short contacts.

## 5.5 Carbohydrates [\(i\)](#)

There are no carbohydrates in this entry.

## 5.6 Ligand geometry [\(i\)](#)

1 ligand is modelled in this entry.

In the following table, the Counts columns list the number of bonds (or angles) for which Mogul statistics could be retrieved, the number of bonds (or angles) that are observed in the model and

the number of bonds (or angles) that are defined in the Chemical Component Dictionary. The Link column lists molecule types, if any, to which the group is linked. The Z score for a bond length (or angle) is the number of standard deviations the observed value is removed from the expected value. A bond length (or angle) with  $|Z| > 2$  is considered an outlier worth inspection. RMSZ is the root-mean-square of all Z scores of the bond lengths (or angles).

Mol	Type	Chain	Res	Link	Bond lengths			Bond angles		
					Counts	RMSZ	# Z  > 2	Counts	RMSZ	# Z  > 2
3	IQP	E	351	-	20,22,22	1.88	4 (20%)	29,32,32	1.90	8 (27%)

In the following table, the Chirals column lists the number of chiral outliers, the number of chiral centers analysed, the number of these observed in the model and the number defined in the Chemical Component Dictionary. Similar counts are reported in the Torsion and Rings columns. '-' means no outliers of that kind were identified.

Mol	Type	Chain	Res	Link	Chirals	Torsions	Rings
3	IQP	E	351	-	-	5/12/23/23	0/3/3/3

All (4) bond length outliers are listed below:

Mol	Chain	Res	Type	Atoms	Z	Observed(Å)	Ideal(Å)
3	E	351	IQP	C2-C1	4.93	1.43	1.37
3	E	351	IQP	C3'-N4'	3.72	1.52	1.46
3	E	351	IQP	O1-S	2.99	1.46	1.43
3	E	351	IQP	C3-C4	2.57	1.42	1.36

All (8) bond angle outliers are listed below:

Mol	Chain	Res	Type	Atoms	Z	Observed(°)	Ideal(°)
3	E	351	IQP	O2-S-N1'	4.15	114.53	106.97
3	E	351	IQP	C9-C8-N7	-3.87	118.78	123.81
3	E	351	IQP	C8-N7-C6	3.50	124.72	117.25
3	E	351	IQP	C2'-N1'-S	-3.17	114.01	119.99
3	E	351	IQP	C6'-N1'-S	-3.11	110.08	118.31
3	E	351	IQP	C5'-C6'-N1'	2.55	111.08	108.95
3	E	351	IQP	O2-S-C1	-2.39	102.94	108.07
3	E	351	IQP	C6'-C5'-N4'	-2.37	104.97	111.12

There are no chirality outliers.

All (5) torsion outliers are listed below:

Mol	Chain	Res	Type	Atoms
3	E	351	IQP	C10-C1-S-O2

*Continued on next page...*

*Continued from previous page...*

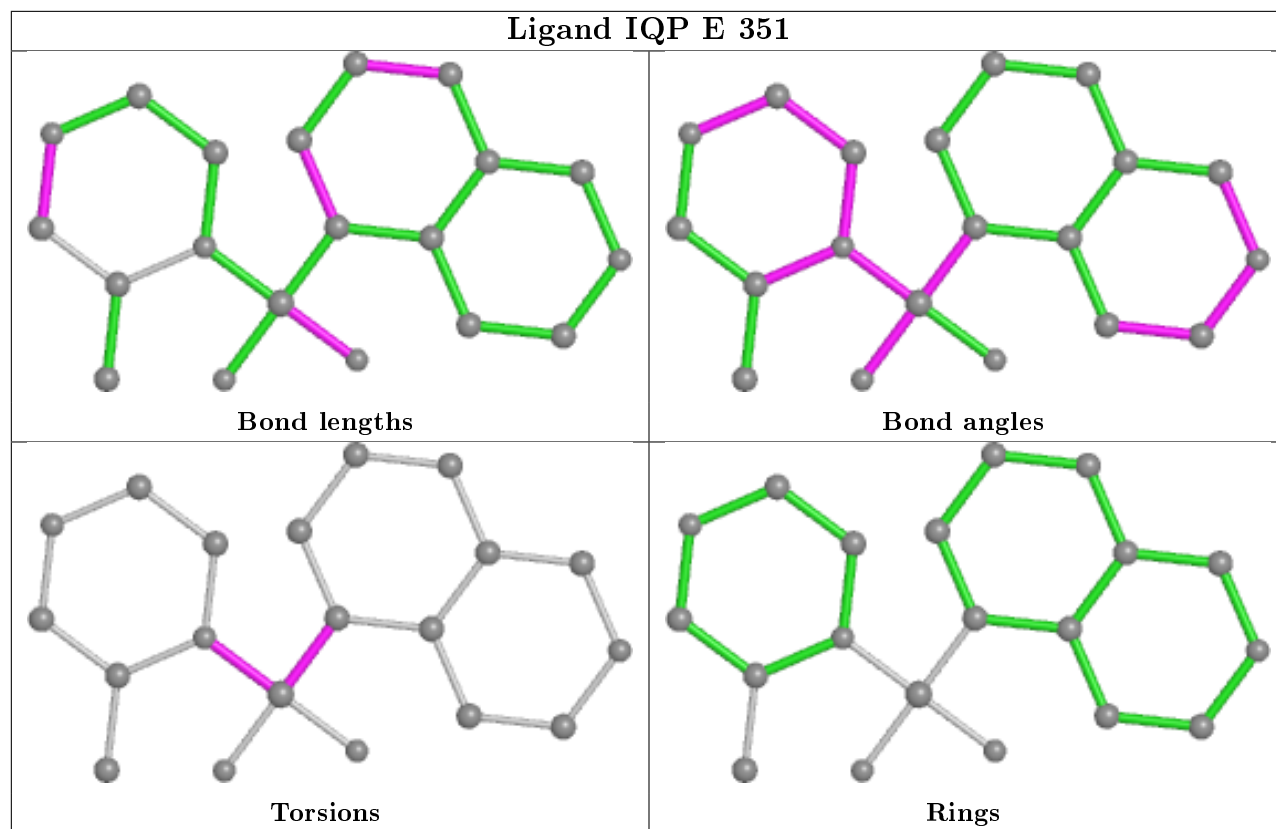
Mol	Chain	Res	Type	Atoms
3	E	351	IQP	C2-C1-S-N1'
3	E	351	IQP	C10-C1-S-N1'
3	E	351	IQP	C2-C1-S-O2
3	E	351	IQP	C2'-N1'-S-O1

There are no ring outliers.

1 monomer is involved in 3 short contacts:

Mol	Chain	Res	Type	Clashes	Symm-Clashes
3	E	351	IQP	3	0

The following is a two-dimensional graphical depiction of Mogul quality analysis of bond lengths, bond angles, torsion angles, and ring geometry for all instances of the Ligand of Interest. In addition, ligands with molecular weight > 250 and outliers as shown on the validation Tables will also be included. For torsion angles, if less than 5% of the Mogul distribution of torsion angles is within 10 degrees of the torsion angle in question, then that torsion angle is considered an outlier. Any bond that is central to one or more torsion angles identified as an outlier by Mogul will be highlighted in the graph. For rings, the root-mean-square deviation (RMSD) between the ring in question and similar rings identified by Mogul is calculated over all ring torsion angles. If the average RMSD is greater than 60 degrees and the minimal RMSD between the ring in question and any Mogul-identified rings is also greater than 60 degrees, then that ring is considered an outlier. The outliers are highlighted in purple. The color gray indicates Mogul did not find sufficient equivalents in the CSD to analyse the geometry.



## 5.7 Other polymers [i](#)

There are no such residues in this entry.

## 5.8 Polymer linkage issues [i](#)

There are no chain breaks in this entry.



## 6 Fit of model and data [i](#)

### 6.1 Protein, DNA and RNA chains [i](#)

In the following table, the column labelled ‘#RSRZ> 2’ contains the number (and percentage) of RSRZ outliers, followed by percent RSRZ outliers for the chain as percentile scores relative to all X-ray entries and entries of similar resolution. The OWAB column contains the minimum, median, 95<sup>th</sup> percentile and maximum values of the occupancy-weighted average B-factor per residue. The column labelled ‘Q< 0.9’ lists the number of (and percentage) of residues with an average occupancy less than 0.9.

Mol	Chain	Analysed	<RSRZ>	#RSRZ>2	OWAB(Å <sup>2</sup> )	Q<0.9
1	E	334/350 (95%)	-0.42	8 (2%) 59 56	10, 27, 55, 84	0
2	I	20/20 (100%)	-0.19	2 (10%) 7 6	13, 21, 81, 99	0
All	All	354/370 (95%)	-0.41	10 (2%) 53 51	10, 27, 55, 99	0

All (10) RSRZ outliers are listed below:

Mol	Chain	Res	Type	RSRZ
2	I	24	ASP	8.0
1	E	52	GLY	6.8
1	E	334	GLU	4.3
2	I	23	HIS	4.0
1	E	53	SER	3.9
1	E	39	HIS	3.2
1	E	333	GLU	3.2
1	E	331	GLU	2.2
1	E	17	GLU	2.0
1	E	336	ARG	2.0

### 6.2 Non-standard residues in protein, DNA, RNA chains [i](#)

In the following table, the Atoms column lists the number of modelled atoms in the group and the number defined in the chemical component dictionary. The B-factors column lists the minimum, median, 95<sup>th</sup> percentile and maximum values of B factors of atoms in the group. The column labelled ‘Q< 0.9’ lists the number of atoms with occupancy less than 0.9.

Mol	Type	Chain	Res	Atoms	RSCC	RSR	B-factors(Å <sup>2</sup> )	Q<0.9
1	SEP	E	338	10/11	0.95	0.13	46,50,54,55	0
1	TPO	E	197	11/12	0.98	0.07	11,14,17,19	0

### 6.3 Carbohydrates [i](#)

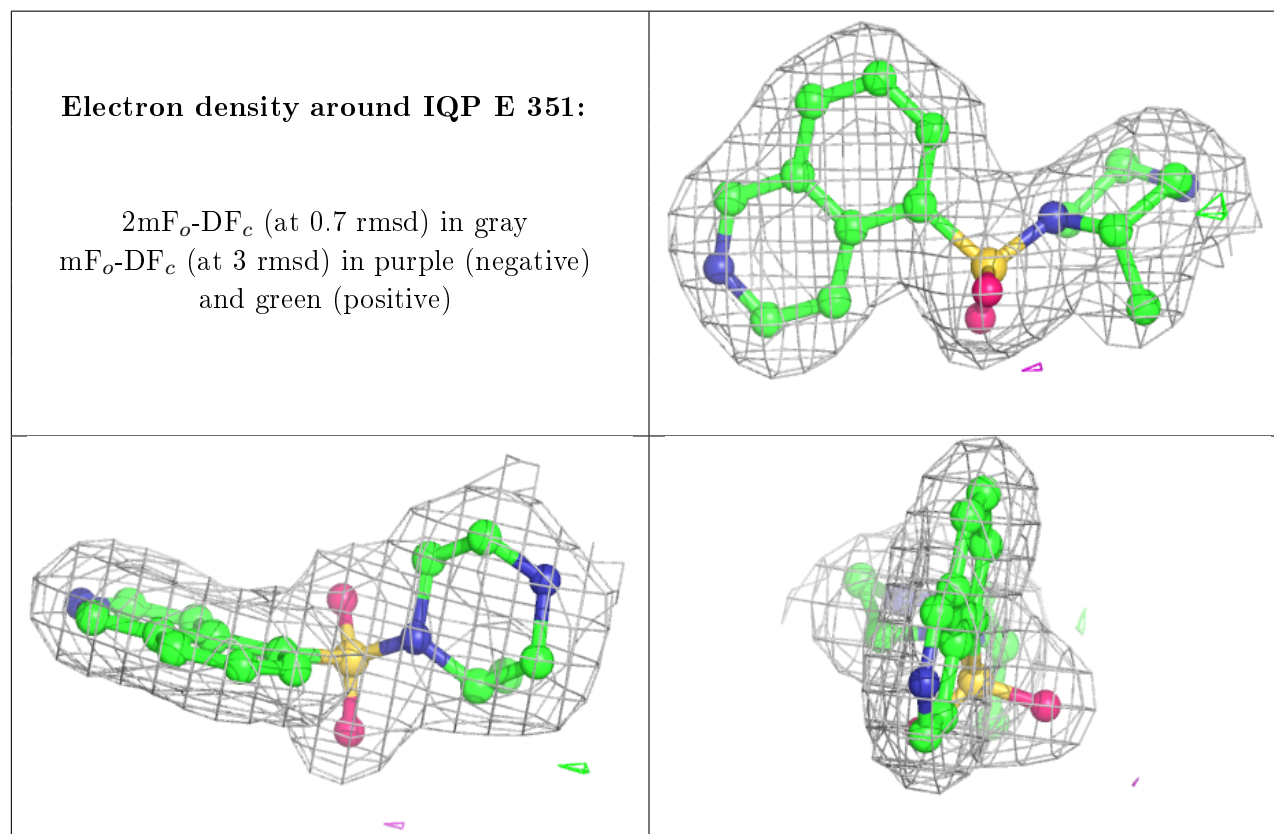
There are no carbohydrates in this entry.

### 6.4 Ligands [i](#)

In the following table, the Atoms column lists the number of modelled atoms in the group and the number defined in the chemical component dictionary. The B-factors column lists the minimum, median, 95<sup>th</sup> percentile and maximum values of B factors of atoms in the group. The column labelled 'Q< 0.9' lists the number of atoms with occupancy less than 0.9.

Mol	Type	Chain	Res	Atoms	RSCC	RSR	B-factors(Å <sup>2</sup> )	Q<0.9
3	IQP	E	351	20/20	0.98	0.07	19,26,34,35	0

The following is a graphical depiction of the model fit to experimental electron density of all instances of the Ligand of Interest. In addition, ligands with molecular weight > 250 and outliers as shown on the geometry validation Tables will also be included. Each fit is shown from different orientation to approximate a three-dimensional view.



### 6.5 Other polymers [i](#)

There are no such residues in this entry.