



Full wwPDB X-ray Structure Validation Report ⓘ

Aug 16, 2023 – 07:37 AM EDT

PDB ID : 1YOU
Title : Crystal structure of the catalytic domain of MMP-13 complexed with a potent pyrimidinetrione inhibitor
Authors : Pandit, J.
Deposited on : 2005-01-28
Resolution : 2.30 Å(reported)

This is a Full wwPDB X-ray Structure Validation Report for a publicly released PDB entry.

We welcome your comments at validation@mail.wwpdb.org

A user guide is available at

<https://www.wwpdb.org/validation/2017/XrayValidationReportHelp>

with specific help available everywhere you see the ⓘ symbol.

The types of validation reports are described at

<http://www.wwpdb.org/validation/2017/FAQs#types>.

The following versions of software and data (see [references ⓘ](#)) were used in the production of this report:

MolProbity : 4.02b-467
Mogul : 1.8.5 (274361), CSD as541be (2020)
Xtriage (Phenix) : 1.13
EDS : 2.35
buster-report : 1.1.7 (2018)
Percentile statistics : 20191225.v01 (using entries in the PDB archive December 25th 2019)
Refmac : 5.8.0158
CCP4 : 7.0.044 (Gargrove)
Ideal geometry (proteins) : Engh & Huber (2001)
Ideal geometry (DNA, RNA) : Parkinson et al. (1996)
Validation Pipeline (wwPDB-VP) : 2.35

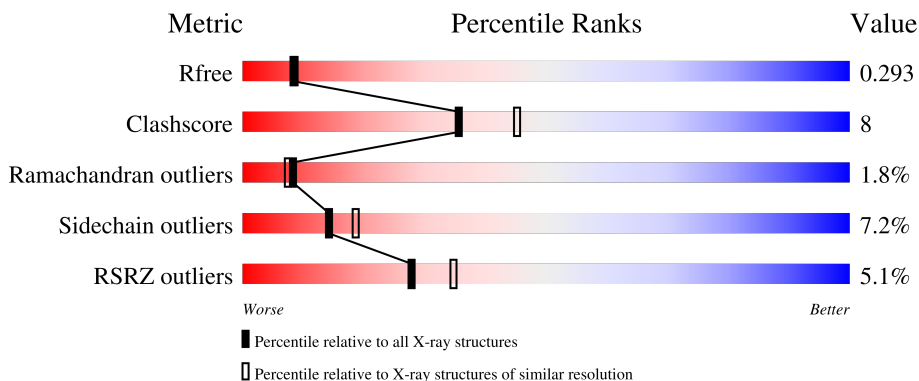
1 Overall quality at a glance

The following experimental techniques were used to determine the structure:

X-RAY DIFFRACTION


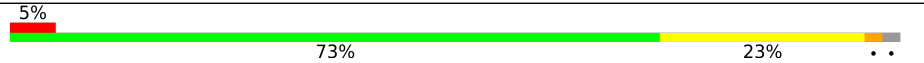
The reported resolution of this entry is 2.30 Å.

Percentile scores (ranging between 0-100) for global validation metrics of the entry are shown in the following graphic. The table shows the number of entries on which the scores are based.



Metric	Whole archive (#Entries)	Similar resolution (#Entries, resolution range(Å))
R_{free}	130704	5042 (2.30-2.30)
Clashscore	141614	5643 (2.30-2.30)
Ramachandran outliers	138981	5575 (2.30-2.30)
Sidechain outliers	138945	5575 (2.30-2.30)
RSRZ outliers	127900	4938 (2.30-2.30)

The table below summarises the geometric issues observed across the polymeric chains and their fit to the electron density. The red, orange, yellow and green segments of the lower bar indicate the fraction of residues that contain outliers for ≥ 3 , 2, 1 and 0 types of geometric quality criteria respectively. A grey segment represents the fraction of residues that are not modelled. The numeric value for each fraction is indicated below the corresponding segment, with a dot representing fractions $\leq 5\%$. The upper red bar (where present) indicates the fraction of residues that have poor fit to the electron density. The numeric value is given above the bar.

Mol	Chain	Length	Quality of chain
1	A	168	 5% 79% 19% .
1	B	168	 5% 73% 23% ..

2 Entry composition [i](#)

There are 6 unique types of molecules in this entry. The entry contains 2733 atoms, of which 0 are hydrogens and 0 are deuteriums.

In the tables below, the ZeroOcc column contains the number of atoms modelled with zero occupancy, the AltConf column contains the number of residues with at least one atom in alternate conformation and the Trace column contains the number of residues modelled with at most 2 atoms.

- Molecule 1 is a protein called Collagenase 3.

Mol	Chain	Residues	Atoms					ZeroOcc	AltConf	Trace
			Total	C	N	O	S			
1	A	168	1335	864	216	251	4	0	0	0
1	B	165	1302	845	210	243	4	0	0	0

- Molecule 2 is ZINC ION (three-letter code: ZN) (formula: Zn).

Mol	Chain	Residues	Atoms		ZeroOcc	AltConf
2	A	2	Total	Zn	0	0
			2	2		
2	B	2	Total	Zn	0	0
			2	2		

- Molecule 3 is CALCIUM ION (three-letter code: CA) (formula: Ca).

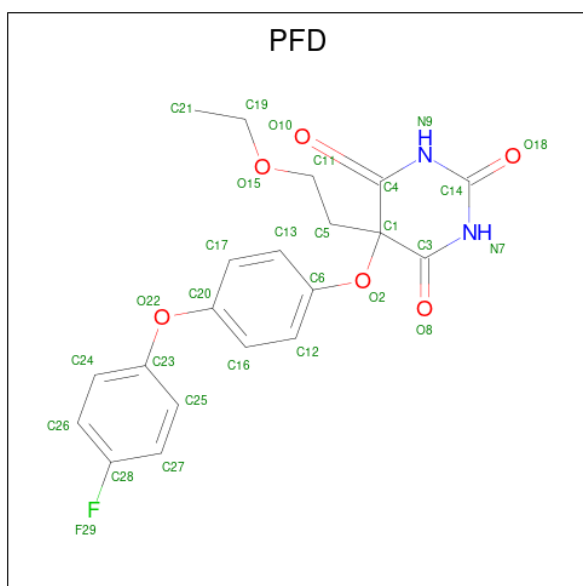
Mol	Chain	Residues	Atoms		ZeroOcc	AltConf
3	A	1	Total	Ca	0	0
			1	1		
3	B	1	Total	Ca	0	0
			1	1		

- Molecule 4 is SULFATE ION (three-letter code: SO4) (formula: O₄S).



Mol	Chain	Residues	Atoms	ZeroOcc	AltConf
4	A	1	Total O S 5 4 1	0	0
4	A	1	Total O S 5 4 1	0	0
4	B	1	Total O S 5 4 1	0	0

- Molecule 5 is 5-(2-ETHOXYETHYL)-5-[4-(4-FLUOROPHENOXY)PHENOXY]PYRIMIDI NE-2,4,6(1H,3H,5H)-TRIONE (three-letter code: PFD) (formula: C₂₀H₁₉FN₂O₆).



Mol	Chain	Residues	Atoms					ZeroOcc	AltConf
			Total	C	F	N	O		
5	A	1	29	20	1	2	6	0	0
5	B	1	29	20	1	2	6	0	0

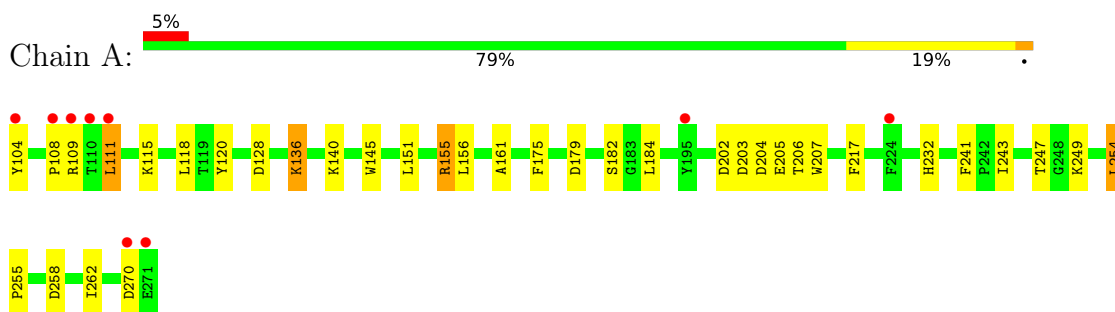
- Molecule 6 is water.

Mol	Chain	Residues	Atoms		ZeroOcc	AltConf
			Total	O		
6	A	10	10	10	0	0
6	B	7	7	7	0	0

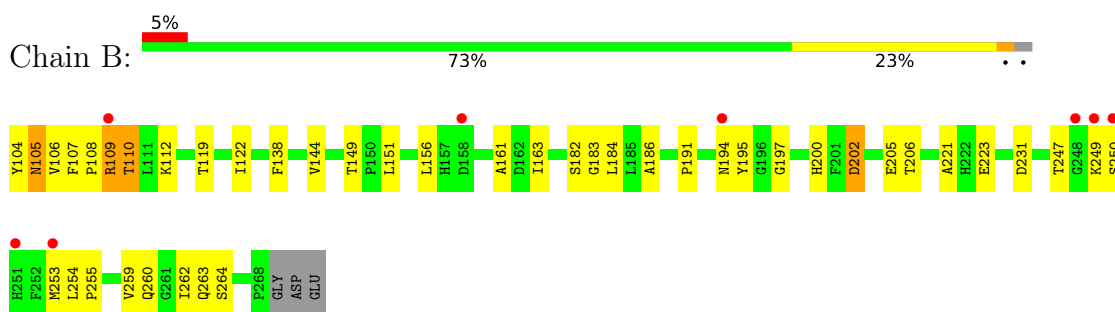
3 Residue-property plots [i](#)

These plots are drawn for all protein, RNA, DNA and oligosaccharide chains in the entry. The first graphic for a chain summarises the proportions of the various outlier classes displayed in the second graphic. The second graphic shows the sequence view annotated by issues in geometry and electron density. Residues are color-coded according to the number of geometric quality criteria for which they contain at least one outlier: green = 0, yellow = 1, orange = 2 and red = 3 or more. A red dot above a residue indicates a poor fit to the electron density ($RSRZ > 2$). Stretches of 2 or more consecutive residues without any outlier are shown as a green connector. Residues present in the sample, but not in the model, are shown in grey.

- Molecule 1: Collagenase 3



- Molecule 1: Collagenase 3



4 Data and refinement statistics

Property	Value	Source
Space group	P 21 21 2	Depositor
Cell constants a, b, c, α , β , γ	81.09Å 108.22Å 36.03Å 90.00° 90.00° 90.00°	Depositor
Resolution (Å)	19.90 – 2.30 19.93 – 2.30	Depositor EDS
% Data completeness (in resolution range)	94.4 (19.90-2.30) 94.6 (19.93-2.30)	Depositor EDS
R_{merge}	(Not available)	Depositor
R_{sym}	(Not available)	Depositor
$\langle I/\sigma(I) \rangle$ ¹	3.20 (at 2.30Å)	Xtrriage
Refinement program	REFMAC 5.2.0005	Depositor
R, R_{free}	0.208 , 0.295 0.208 , 0.293	Depositor DCC
R_{free} test set	1080 reflections (7.75%)	wwPDB-VP
Wilson B-factor (Å ²)	27.1	Xtrriage
Anisotropy	0.097	Xtrriage
Bulk solvent k_{sol} (e/Å ³), B_{sol} (Å ²)	0.35 , 31.9	EDS
L-test for twinning ²	$\langle L \rangle = 0.44$, $\langle L^2 \rangle = 0.26$	Xtrriage
Estimated twinning fraction	No twinning to report.	Xtrriage
F_o, F_c correlation	0.92	EDS
Total number of atoms	2733	wwPDB-VP
Average B, all atoms (Å ²)	23.0	wwPDB-VP

Xtrriage's analysis on translational NCS is as follows: *The largest off-origin peak in the Patterson function is 5.60% of the height of the origin peak. No significant pseudotranslation is detected.*

¹Intensities estimated from amplitudes.

²Theoretical values of $\langle |L| \rangle$, $\langle L^2 \rangle$ for acentric reflections are 0.5, 0.333 respectively for untwinned datasets, and 0.375, 0.2 for perfectly twinned datasets.

5 Model quality [i](#)

5.1 Standard geometry [i](#)

Bond lengths and bond angles in the following residue types are not validated in this section: CA, PFD, ZN, SO4

The Z score for a bond length (or angle) is the number of standard deviations the observed value is removed from the expected value. A bond length (or angle) with $|Z| > 5$ is considered an outlier worth inspection. RMSZ is the root-mean-square of all Z scores of the bond lengths (or angles).

Mol	Chain	Bond lengths		Bond angles	
		RMSZ	# $ Z > 5$	RMSZ	# $ Z > 5$
1	A	1.10	2/1383 (0.1%)	0.99	4/1880 (0.2%)
1	B	1.09	1/1349 (0.1%)	0.96	1/1836 (0.1%)
All	All	1.09	3/2732 (0.1%)	0.98	5/3716 (0.1%)

Chiral center outliers are detected by calculating the chiral volume of a chiral center and verifying if the center is modelled as a planar moiety or with the opposite hand. A planarity outlier is detected by checking planarity of atoms in a peptide group, atoms in a mainchain group or atoms of a sidechain that are expected to be planar.

Mol	Chain	#Chirality outliers	#Planarity outliers
1	B	0	2

All (3) bond length outliers are listed below:

Mol	Chain	Res	Type	Atoms	Z	Observed(Å)	Ideal(Å)
1	B	221	ALA	CA-CB	5.86	1.64	1.52
1	A	207	TRP	CB-CG	-5.44	1.40	1.50
1	A	241	PHE	CE2-CZ	5.00	1.46	1.37

All (5) bond angle outliers are listed below:

Mol	Chain	Res	Type	Atoms	Z	Observed(°)	Ideal(°)
1	A	179	ASP	CB-CG-OD2	6.00	123.70	118.30
1	A	128	ASP	CB-CG-OD1	5.84	123.56	118.30
1	A	128	ASP	CB-CG-OD2	-5.77	113.11	118.30
1	B	202	ASP	CB-CG-OD1	5.63	123.36	118.30
1	A	204	ASP	CB-CG-OD2	5.33	123.09	118.30

There are no chirality outliers.

All (2) planarity outliers are listed below:

Mol	Chain	Res	Type	Group
1	B	108	PRO	Peptide
1	B	249	LYS	Peptide

5.2 Too-close contacts [i](#)

In the following table, the Non-H and H(model) columns list the number of non-hydrogen atoms and hydrogen atoms in the chain respectively. The H(added) column lists the number of hydrogen atoms added and optimized by MolProbity. The Clashes column lists the number of clashes within the asymmetric unit, whereas Symm-Clashes lists symmetry-related clashes.

Mol	Chain	Non-H	H(model)	H(added)	Clashes	Symm-Clashes
1	A	1335	0	1236	25	0
1	B	1302	0	1205	20	0
2	A	2	0	0	0	0
2	B	2	0	0	0	0
3	A	1	0	0	0	0
3	B	1	0	0	0	0
4	A	10	0	0	1	0
4	B	5	0	0	0	0
5	A	29	0	18	1	0
5	B	29	0	18	1	0
6	A	10	0	0	0	0
6	B	7	0	0	0	0
All	All	2733	0	2477	42	0

The all-atom clashscore is defined as the number of clashes found per 1000 atoms (including hydrogen atoms). The all-atom clashscore for this structure is 8.

All (42) close contacts within the same asymmetric unit are listed below, sorted by their clash magnitude.

Atom-1	Atom-2	Interatomic distance (Å)	Clash overlap (Å)
1:A:108:PRO:O	1:A:109:ARG:CG	2.07	1.02
1:A:108:PRO:O	1:A:109:ARG:HG2	1.70	0.91
1:A:108:PRO:O	1:A:109:ARG:HG3	1.71	0.89
1:A:254:LEU:CD2	1:A:258:ASP:HB2	2.10	0.81
1:A:104:TYR:O	1:B:231:ASP:HB3	1.81	0.81
1:A:254:LEU:HD22	1:A:258:ASP:HB2	1.64	0.80
1:B:119:THR:HB	1:B:156:LEU:HD13	1.65	0.77
1:A:175:PHE:O	1:B:195:TYR:OH	2.07	0.69
1:A:145:TRP:CE3	1:A:262:ILE:HD12	2.32	0.65
1:A:111:LEU:H	1:A:111:LEU:HD23	1.70	0.56

Continued on next page...

Continued from previous page...

Atom-1	Atom-2	Interatomic distance (Å)	Clash overlap (Å)
1:B:184:LEU:HD12	5:B:999:PFD:O8	2.04	0.56
1:B:112:LYS:HA	1:B:191:PRO:HG2	1.88	0.55
1:B:156:LEU:HD22	1:B:161:ALA:HB2	1.89	0.55
1:A:136:LYS:N	1:A:136:LYS:HD2	2.25	0.52
1:A:254:LEU:HD21	1:A:258:ASP:HB2	1.87	0.51
1:A:108:PRO:C	1:A:109:ARG:CG	2.79	0.51
1:A:140:LYS:HD3	1:A:217:PHE:CE1	2.45	0.51
1:B:122:ILE:HD13	1:B:138:PHE:HD2	1.77	0.49
1:A:202:ASP:HB3	1:A:205:GLU:HG2	1.93	0.49
1:A:120:TYR:CE1	1:A:155:ARG:HG3	2.48	0.48
1:A:109:ARG:HD3	1:B:110:THR:OG1	2.13	0.48
1:A:136:LYS:HA	1:A:136:LYS:HE3	1.96	0.48
1:B:260:GLN:O	1:B:264:SER:HB3	2.14	0.48
1:A:108:PRO:C	1:A:109:ARG:HG2	2.32	0.47
1:B:254:LEU:HD12	1:B:255:PRO:HD2	1.95	0.47
5:A:998:PFD:C14	5:A:998:PFD:H191	2.45	0.47
1:A:145:TRP:CE3	1:A:262:ILE:CD1	2.98	0.47
1:B:259:VAL:O	1:B:263:GLN:HG3	2.16	0.46
1:B:149:THR:HG21	1:B:262:ILE:HG13	1.99	0.45
1:A:232:HIS:O	1:B:105:ASN:HB2	2.17	0.45
1:B:163:ILE:HG23	1:B:197:GLY:O	2.16	0.45
1:B:253:MET:O	1:B:254:LEU:C	2.57	0.43
1:B:186:ALA:HB1	1:B:200:HIS:O	2.18	0.43
1:B:182:SER:HB2	1:B:183:GLY:H	1.72	0.42
1:B:202:ASP:HB3	1:B:205:GLU:HG2	2.01	0.42
1:A:115:LYS:HB2	4:A:502:SO4:O1	2.19	0.42
1:B:149:THR:HG21	1:B:262:ILE:CG1	2.50	0.41
1:A:254:LEU:HD21	1:A:258:ASP:CB	2.48	0.41
1:A:254:LEU:HD23	1:A:255:PRO:HD2	2.02	0.41
1:A:120:TYR:CZ	1:A:155:ARG:HG3	2.56	0.41
1:A:156:LEU:HD22	1:A:161:ALA:HB2	2.01	0.40
1:B:106:VAL:HG12	1:B:107:PHE:O	2.22	0.40

There are no symmetry-related clashes.

5.3 Torsion angles [i](#)

5.3.1 Protein backbone [i](#)

In the following table, the Percentiles column shows the percent Ramachandran outliers of the chain as a percentile score with respect to all X-ray entries followed by that with respect to entries

of similar resolution.

The Analysed column shows the number of residues for which the backbone conformation was analysed, and the total number of residues.

Mol	Chain	Analysed	Favoured	Allowed	Outliers	Percentiles	
1	A	166/168 (99%)	151 (91%)	14 (8%)	1 (1%)	25	31
1	B	163/168 (97%)	148 (91%)	10 (6%)	5 (3%)	4	2
All	All	329/336 (98%)	299 (91%)	24 (7%)	6 (2%)	8	7

All (6) Ramachandran outliers are listed below:

Mol	Chain	Res	Type
1	B	109	ARG
1	B	250	SER
1	A	249	LYS
1	B	105	ASN
1	B	144	VAL
1	B	194	ASN

5.3.2 Protein sidechains [i](#)

In the following table, the Percentiles column shows the percent sidechain outliers of the chain as a percentile score with respect to all X-ray entries followed by that with respect to entries of similar resolution.

The Analysed column shows the number of residues for which the sidechain conformation was analysed, and the total number of residues.

Mol	Chain	Analysed	Rotameric	Outliers	Percentiles	
1	A	141/143 (99%)	128 (91%)	13 (9%)	9	11
1	B	137/143 (96%)	130 (95%)	7 (5%)	24	33
All	All	278/286 (97%)	258 (93%)	20 (7%)	14	18

All (20) residues with a non-rotameric sidechain are listed below:

Mol	Chain	Res	Type
1	A	111	LEU
1	A	118	LEU
1	A	136	LYS
1	A	151	LEU
1	A	155	ARG
1	A	182	SER

Continued on next page...

Continued from previous page...

Mol	Chain	Res	Type
1	A	184	LEU
1	A	203	ASP
1	A	206	THR
1	A	243	ILE
1	A	247	THR
1	A	254	LEU
1	A	270	ASP
1	B	104	TYR
1	B	109	ARG
1	B	110	THR
1	B	151	LEU
1	B	206	THR
1	B	223	GLU
1	B	247	THR

Sometimes sidechains can be flipped to improve hydrogen bonding and reduce clashes. There are no such sidechains identified.

5.3.3 RNA [i](#)

There are no RNA molecules in this entry.

5.4 Non-standard residues in protein, DNA, RNA chains [i](#)

There are no non-standard protein/DNA/RNA residues in this entry.

5.5 Carbohydrates [i](#)

There are no monosaccharides in this entry.

5.6 Ligand geometry [i](#)

Of 11 ligands modelled in this entry, 6 are monoatomic - leaving 5 for Mogul analysis.

In the following table, the Counts columns list the number of bonds (or angles) for which Mogul statistics could be retrieved, the number of bonds (or angles) that are observed in the model and the number of bonds (or angles) that are defined in the Chemical Component Dictionary. The Link column lists molecule types, if any, to which the group is linked. The Z score for a bond length (or angle) is the number of standard deviations the observed value is removed from the expected value. A bond length (or angle) with $|Z| > 2$ is considered an outlier worth inspection. RMSZ is the root-mean-square of all Z scores of the bond lengths (or angles).

Mol	Type	Chain	Res	Link	Bond lengths			Bond angles		
					Counts	RMSZ	# Z > 2	Counts	RMSZ	# Z > 2
4	SO4	B	503	-	4,4,4	0.19	0	6,6,6	0.23	0
5	PFD	B	999	2	28,31,31	1.63	5 (17%)	33,43,43	1.73	7 (21%)
4	SO4	A	502	-	4,4,4	0.19	0	6,6,6	0.80	0
4	SO4	A	501	-	4,4,4	0.24	0	6,6,6	0.81	0
5	PFD	A	998	2	28,31,31	1.44	2 (7%)	33,43,43	1.95	10 (30%)

In the following table, the Chirals column lists the number of chiral outliers, the number of chiral centers analysed, the number of these observed in the model and the number defined in the Chemical Component Dictionary. Similar counts are reported in the Torsion and Rings columns. '-' means no outliers of that kind were identified.

Mol	Type	Chain	Res	Link	Chirals	Torsions	Rings
5	PFD	B	999	2	-	7/15/35/35	0/3/3/3
5	PFD	A	998	2	-	8/15/35/35	0/3/3/3

All (7) bond length outliers are listed below:

Mol	Chain	Res	Type	Atoms	Z	Observed(Å)	Ideal(Å)
5	B	999	PFD	O18-C14	5.10	1.34	1.23
5	A	998	PFD	O18-C14	4.85	1.33	1.23
5	B	999	PFD	C14-N7	-2.57	1.33	1.37
5	B	999	PFD	C3-N7	-2.35	1.33	1.37
5	A	998	PFD	O22-C23	-2.08	1.35	1.39
5	B	999	PFD	C5-C1	2.04	1.56	1.53
5	B	999	PFD	C13-C6	2.00	1.42	1.38

All (17) bond angle outliers are listed below:

Mol	Chain	Res	Type	Atoms	Z	Observed(°)	Ideal(°)
5	A	998	PFD	N7-C14-N9	4.61	123.21	115.80
5	A	998	PFD	C4-N9-C14	-4.41	119.36	126.04
5	B	999	PFD	N7-C14-N9	4.36	122.80	115.80
5	A	998	PFD	C5-C1-C4	-4.00	100.24	108.85
5	A	998	PFD	C20-O22-C23	3.83	127.77	118.80
5	B	999	PFD	C4-N9-C14	-3.69	120.46	126.04
5	B	999	PFD	C16-C12-C6	3.37	123.85	119.73
5	B	999	PFD	C5-C1-C4	-3.35	101.65	108.85
5	A	998	PFD	O15-C11-C5	3.31	116.39	109.50
5	A	998	PFD	O10-C4-N9	-3.29	115.26	120.50
5	B	999	PFD	C13-C6-C12	-3.04	115.50	120.18
5	A	998	PFD	C3-N7-C14	-2.52	122.22	126.04

Continued on next page...

Continued from previous page...

Mol	Chain	Res	Type	Atoms	Z	Observed(°)	Ideal(°)
5	A	998	PFD	C16-C12-C6	2.31	122.56	119.73
5	B	999	PFD	O10-C4-N9	-2.30	116.84	120.50
5	A	998	PFD	O18-C14-N9	-2.19	117.69	121.82
5	B	999	PFD	C3-N7-C14	-2.11	122.85	126.04
5	A	998	PFD	O8-C3-N7	2.11	123.86	120.50

There are no chirality outliers.

All (15) torsion outliers are listed below:

Mol	Chain	Res	Type	Atoms
5	A	998	PFD	C4-C1-O2-C6
5	A	998	PFD	C3-C1-O2-C6
5	B	999	PFD	C4-C1-C5-C11
5	A	998	PFD	C13-C6-O2-C1
5	A	998	PFD	C5-C1-O2-C6
5	B	999	PFD	C12-C6-O2-C1
5	B	999	PFD	C13-C6-O2-C1
5	A	998	PFD	O2-C1-C5-C11
5	A	998	PFD	C3-C1-C5-C11
5	B	999	PFD	C3-C1-C5-C11
5	A	998	PFD	C5-C11-O15-C19
5	B	999	PFD	C5-C11-O15-C19
5	B	999	PFD	O15-C11-C5-C1
5	A	998	PFD	C12-C6-O2-C1
5	B	999	PFD	O2-C1-C5-C11

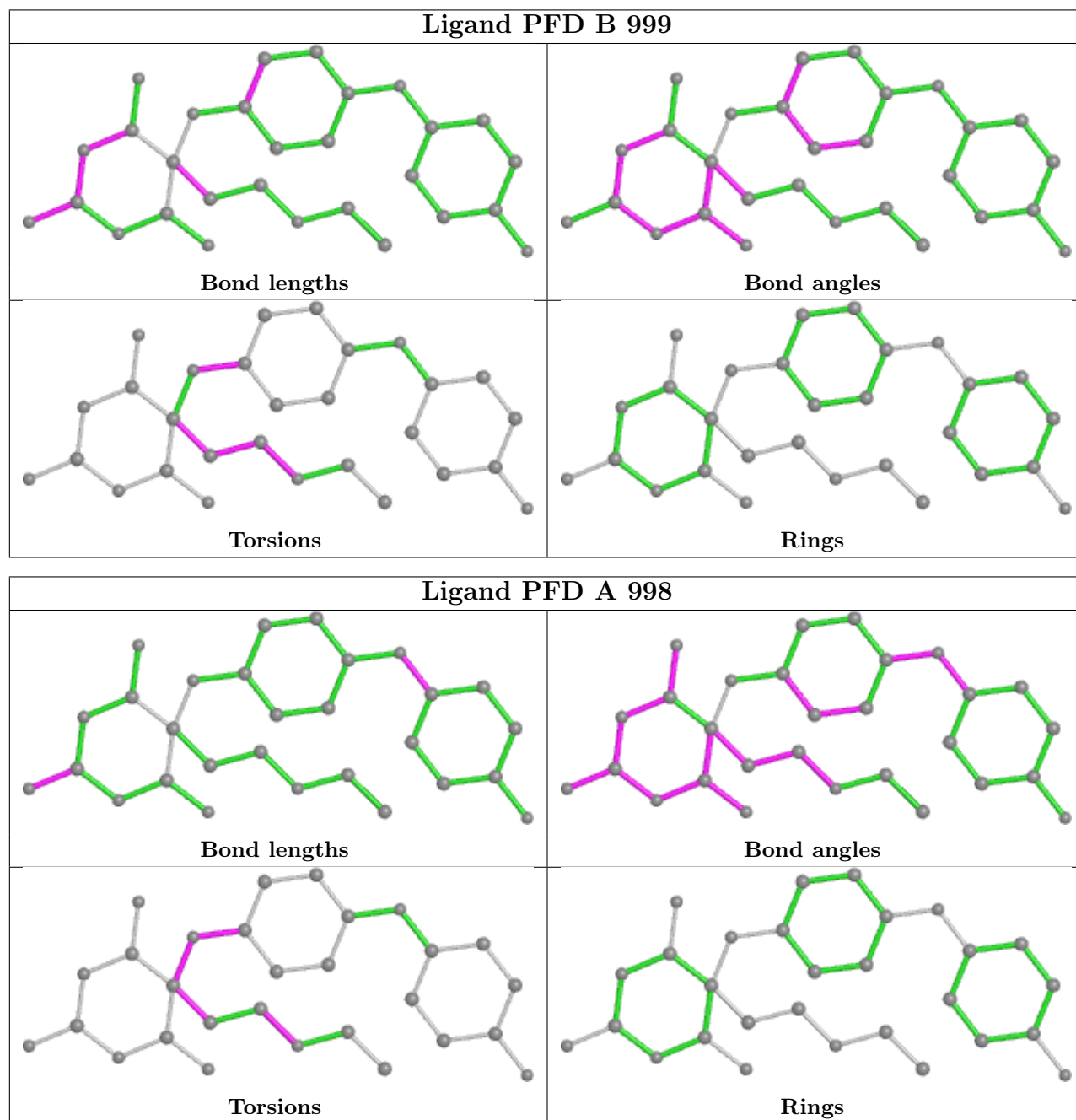
There are no ring outliers.

3 monomers are involved in 3 short contacts:

Mol	Chain	Res	Type	Clashes	Symm-Clashes
5	B	999	PFD	1	0
4	A	502	SO4	1	0
5	A	998	PFD	1	0

The following is a two-dimensional graphical depiction of Mogul quality analysis of bond lengths, bond angles, torsion angles, and ring geometry for all instances of the Ligand of Interest. In addition, ligands with molecular weight > 250 and outliers as shown on the validation Tables will also be included. For torsion angles, if less than 5% of the Mogul distribution of torsion angles is within 10 degrees of the torsion angle in question, then that torsion angle is considered an outlier. Any bond that is central to one or more torsion angles identified as an outlier by Mogul will be highlighted in the graph. For rings, the root-mean-square deviation (RMSD) between the ring in question and similar rings identified by Mogul is calculated over all ring torsion angles. If the

average RMSD is greater than 60 degrees and the minimal RMSD between the ring in question and any Mogul-identified rings is also greater than 60 degrees, then that ring is considered an outlier. The outliers are highlighted in purple. The color gray indicates Mogul did not find sufficient equivalents in the CSD to analyse the geometry.



5.7 Other polymers [i](#)

There are no such residues in this entry.

5.8 Polymer linkage issues

There are no chain breaks in this entry.

6 Fit of model and data [i](#)

6.1 Protein, DNA and RNA chains [i](#)

In the following table, the column labelled ‘#RSRZ > 2’ contains the number (and percentage) of RSRZ outliers, followed by percent RSRZ outliers for the chain as percentile scores relative to all X-ray entries and entries of similar resolution. The OWAB column contains the minimum, median, 95th percentile and maximum values of the occupancy-weighted average B-factor per residue. The column labelled ‘Q < 0.9’ lists the number of (and percentage) of residues with an average occupancy less than 0.9.

Mol	Chain	Analysed	<RSRZ>	#RSRZ>2	OWAB(Å ²)	Q<0.9
1	A	168/168 (100%)	0.25	9 (5%) 25 32	11, 20, 47, 61	0
1	B	165/168 (98%)	0.18	8 (4%) 30 37	9, 21, 39, 52	0
All	All	333/336 (99%)	0.21	17 (5%) 28 35	9, 21, 43, 61	0

All (17) RSRZ outliers are listed below:

Mol	Chain	Res	Type	RSRZ
1	A	104	TYR	9.8
1	B	251	HIS	6.4
1	B	249	LYS	6.4
1	A	271	GLU	5.8
1	A	270	ASP	4.9
1	B	248	GLY	4.8
1	A	111	LEU	4.6
1	B	250	SER	3.9
1	A	195	TYR	3.6
1	A	109	ARG	3.5
1	B	253	MET	3.4
1	A	110	THR	3.3
1	A	108	PRO	2.7
1	A	224	PHE	2.3
1	B	109	ARG	2.3
1	B	194	ASN	2.0
1	B	158	ASP	2.0

6.2 Non-standard residues in protein, DNA, RNA chains [i](#)

There are no non-standard protein/DNA/RNA residues in this entry.

6.3 Carbohydrates [i](#)

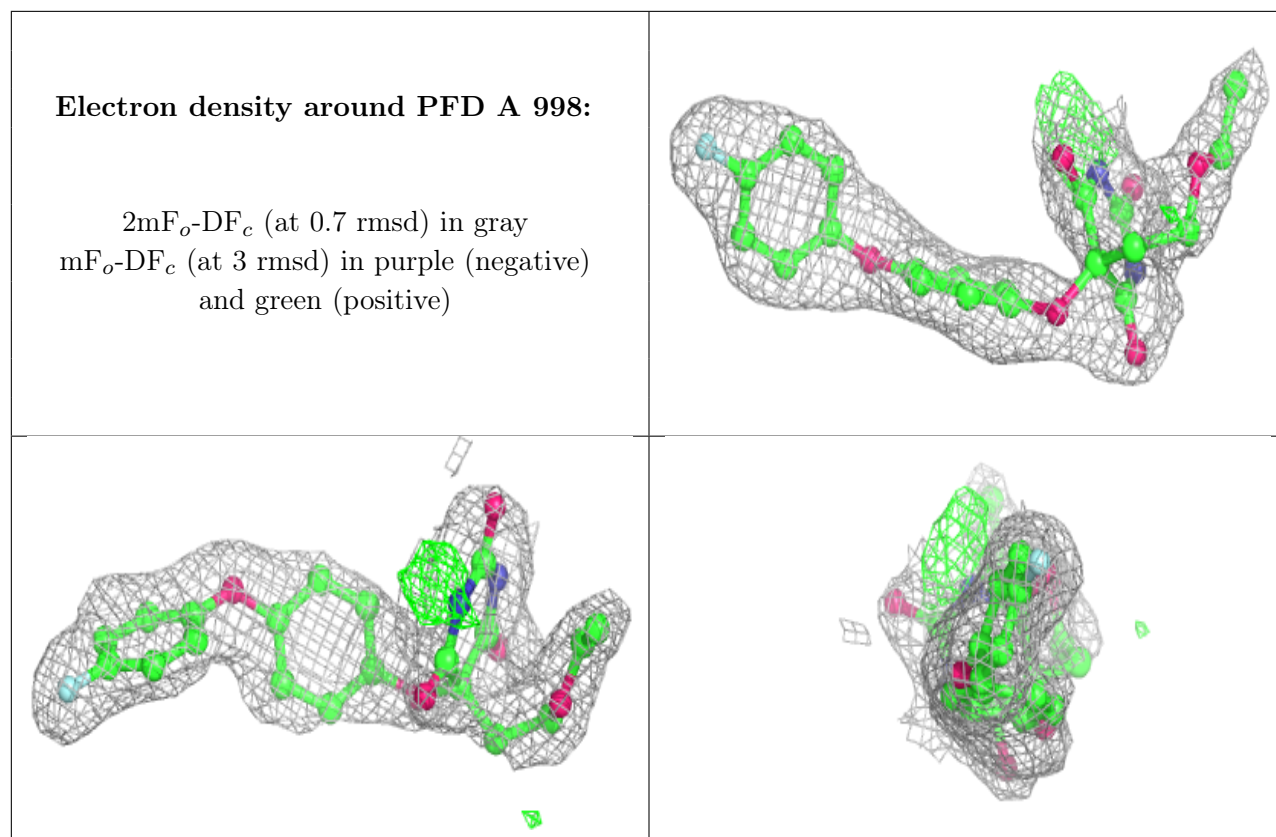
There are no monosaccharides in this entry.

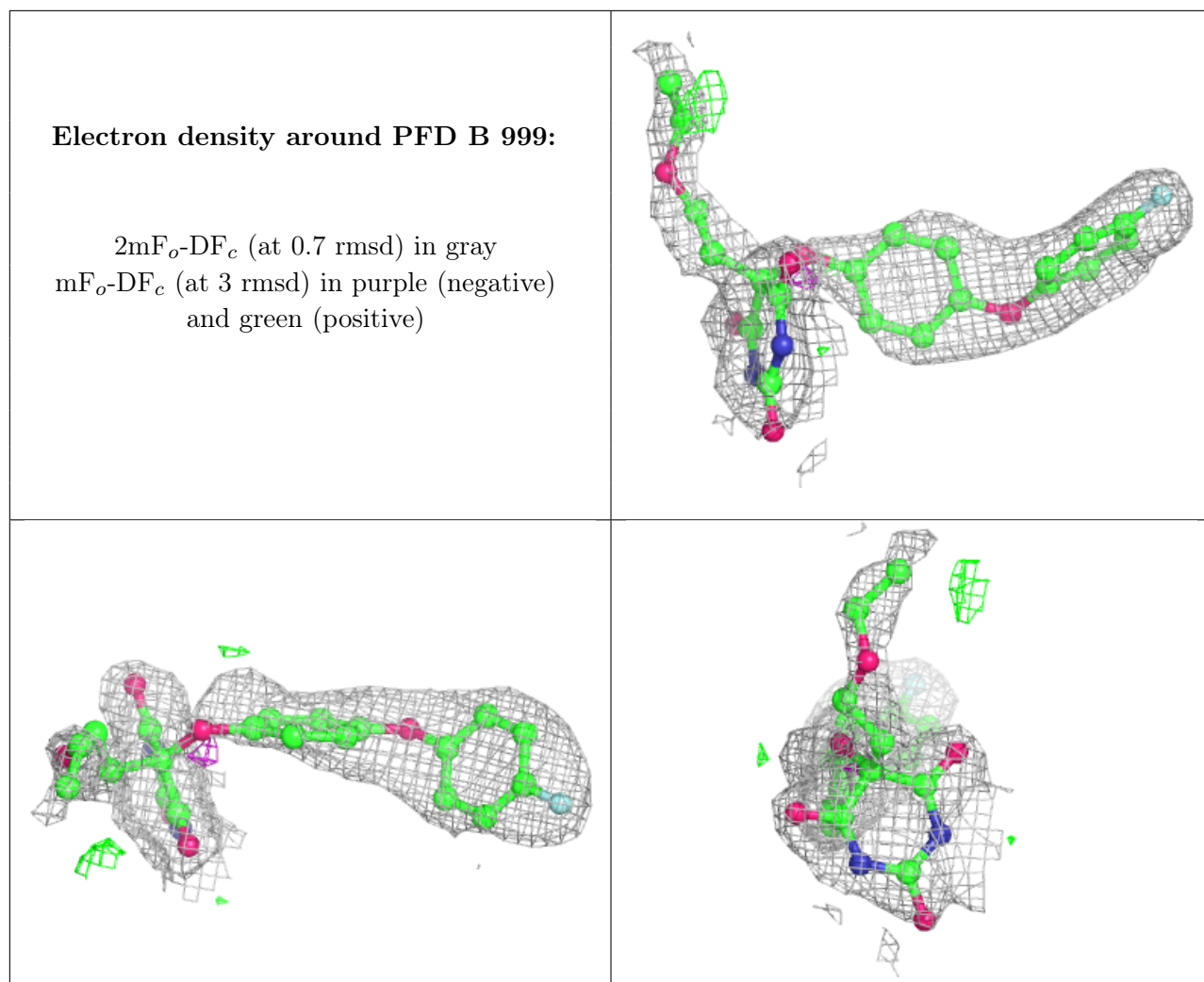
6.4 Ligands [i](#)

In the following table, the Atoms column lists the number of modelled atoms in the group and the number defined in the chemical component dictionary. The B-factors column lists the minimum, median, 95th percentile and maximum values of B factors of atoms in the group. The column labelled 'Q< 0.9' lists the number of atoms with occupancy less than 0.9.

Mol	Type	Chain	Res	Atoms	RSCC	RSR	B-factors(Å ²)	Q<0.9
5	PFD	A	998	29/29	0.84	0.20	16,32,39,41	0
5	PFD	B	999	29/29	0.84	0.20	27,32,43,45	0
4	SO4	A	502	5/5	0.94	0.23	36,39,39,40	0
3	CA	A	401	1/1	0.95	0.05	21,21,21,21	0
4	SO4	B	503	5/5	0.97	0.15	46,48,50,52	0
4	SO4	A	501	5/5	0.98	0.09	25,25,28,29	0
2	ZN	A	301	1/1	0.99	0.10	20,20,20,20	0
2	ZN	B	304	1/1	0.99	0.09	18,18,18,18	0
3	CA	B	403	1/1	1.00	0.07	14,14,14,14	0
2	ZN	A	302	1/1	1.00	0.05	16,16,16,16	0
2	ZN	B	303	1/1	1.00	0.08	21,21,21,21	0

The following is a graphical depiction of the model fit to experimental electron density of all instances of the Ligand of Interest. In addition, ligands with molecular weight > 250 and outliers as shown on the geometry validation Tables will also be included. Each fit is shown from different orientation to approximate a three-dimensional view.





6.5 Other polymers [i](#)

There are no such residues in this entry.