



# Full wwPDB X-ray Structure Validation Report ⓘ

Nov 14, 2023 – 01:14 AM JST

PDB ID : 5YQ1  
Title : Crystal structure of E.coli aminopeptidase N in complex with O-Methyl-L-tyrosine  
Authors : Marapaka, A.K.; Ganji, R.J.; Reddi, R.; Addlagatta, A.  
Deposited on : 2017-11-04  
Resolution : 1.58 Å(reported)

This is a Full wwPDB X-ray Structure Validation Report for a publicly released PDB entry.

We welcome your comments at [validation@mail.wwpdb.org](mailto:validation@mail.wwpdb.org)

A user guide is available at

<https://www.wwpdb.org/validation/2017/XrayValidationReportHelp>

with specific help available everywhere you see the ⓘ symbol.

The types of validation reports are described at

<http://www.wwpdb.org/validation/2017/FAQs#types>.

---

The following versions of software and data (see [references ⓘ](#)) were used in the production of this report:

MolProbity : 4.02b-467  
Mogul : 1.8.5 (274361), CSD as541be (2020)  
Xtrriage (Phenix) : 1.13  
EDS : 2.36  
buster-report : 1.1.7 (2018)  
Percentile statistics : 20191225.v01 (using entries in the PDB archive December 25th 2019)  
Refmac : 5.8.0158  
CCP4 : 7.0.044 (Gargrove)  
Ideal geometry (proteins) : Engh & Huber (2001)  
Ideal geometry (DNA, RNA) : Parkinson et al. (1996)  
Validation Pipeline (wwPDB-VP) : 2.36

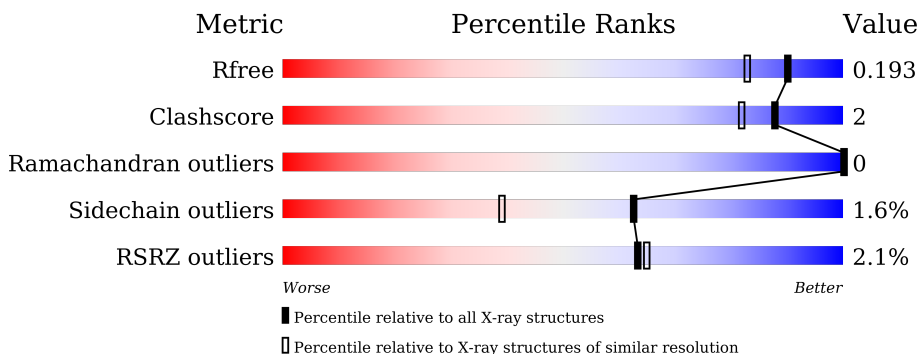
# 1 Overall quality at a glance

The following experimental techniques were used to determine the structure:

*X-RAY DIFFRACTION*

The reported resolution of this entry is 1.58 Å.

Percentile scores (ranging between 0-100) for global validation metrics of the entry are shown in the following graphic. The table shows the number of entries on which the scores are based.



Metric	Whole archive (#Entries)	Similar resolution (#Entries, resolution range(Å))
$R_{free}$	130704	5534 (1.60-1.56)
Clashscore	141614	5861 (1.60-1.56)
Ramachandran outliers	138981	5708 (1.60-1.56)
Sidechain outliers	138945	5703 (1.60-1.56)
RSRZ outliers	127900	5431 (1.60-1.56)

The table below summarises the geometric issues observed across the polymeric chains and their fit to the electron density. The red, orange, yellow and green segments of the lower bar indicate the fraction of residues that contain outliers for  $\geq 3$ , 2, 1 and 0 types of geometric quality criteria respectively. A grey segment represents the fraction of residues that are not modelled. The numeric value for each fraction is indicated below the corresponding segment, with a dot representing fractions  $\leq 5\%$ . The upper red bar (where present) indicates the fraction of residues that have poor fit to the electron density. The numeric value is given above the bar.

Mol	Chain	Length	Quality of chain
1	A	891	

The following table lists non-polymeric compounds, carbohydrate monomers and non-standard residues in protein, DNA, RNA chains that are outliers for geometric or electron-density-fit criteria:

Mol	Type	Chain	Res	Chirality	Geometry	Clashes	Electron density
4	MLI	A	904	-	X	-	-
5	GOL	A	908	-	X	-	-

*Continued on next page...*

*Continued from previous page...*

<b>Mol</b>	<b>Type</b>	<b>Chain</b>	<b>Res</b>	<b>Chirality</b>	<b>Geometry</b>	<b>Clashes</b>	<b>Electron density</b>
5	GOL	A	910	-	X	-	-

## 2 Entry composition [i](#)

There are 6 unique types of molecules in this entry. The entry contains 7661 atoms, of which 0 are hydrogens and 0 are deuteriums.

In the tables below, the ZeroOcc column contains the number of atoms modelled with zero occupancy, the AltConf column contains the number of residues with at least one atom in alternate conformation and the Trace column contains the number of residues modelled with at most 2 atoms.

- Molecule 1 is a protein called Aminopeptidase N.

Mol	Chain	Residues	Atoms					ZeroOcc	AltConf	Trace
			Total	C	N	O	S			
1	A	866	6982	4422	1208	1324	28	0	8	0

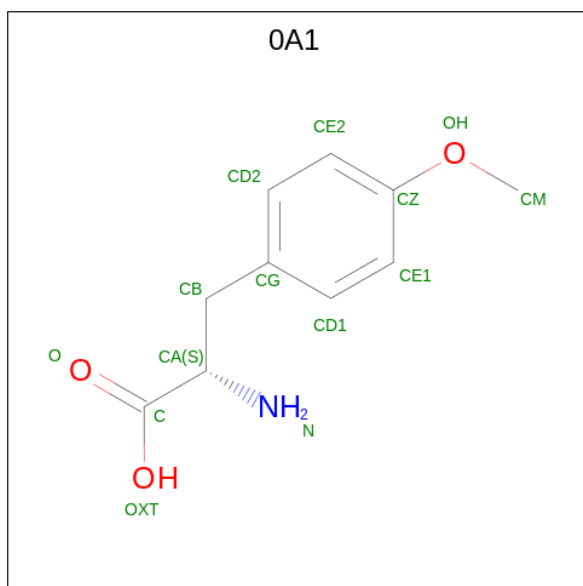
There are 21 discrepancies between the modelled and reference sequences:

Chain	Residue	Modelled	Actual	Comment	Reference
A	-20	MET	-	initiating methionine	UNP P04825
A	-19	GLY	-	expression tag	UNP P04825
A	-18	SER	-	expression tag	UNP P04825
A	-17	SER	-	expression tag	UNP P04825
A	-16	HIS	-	expression tag	UNP P04825
A	-15	HIS	-	expression tag	UNP P04825
A	-14	HIS	-	expression tag	UNP P04825
A	-13	HIS	-	expression tag	UNP P04825
A	-12	HIS	-	expression tag	UNP P04825
A	-11	HIS	-	expression tag	UNP P04825
A	-10	SER	-	expression tag	UNP P04825
A	-9	SER	-	expression tag	UNP P04825
A	-8	GLY	-	expression tag	UNP P04825
A	-7	LEU	-	expression tag	UNP P04825
A	-6	VAL	-	expression tag	UNP P04825
A	-5	PRO	-	expression tag	UNP P04825
A	-4	ARG	-	expression tag	UNP P04825
A	-3	GLY	-	expression tag	UNP P04825
A	-2	SER	-	expression tag	UNP P04825
A	-1	HIS	-	expression tag	UNP P04825
A	0	MET	-	expression tag	UNP P04825

- Molecule 2 is ZINC ION (three-letter code: ZN) (formula: Zn).

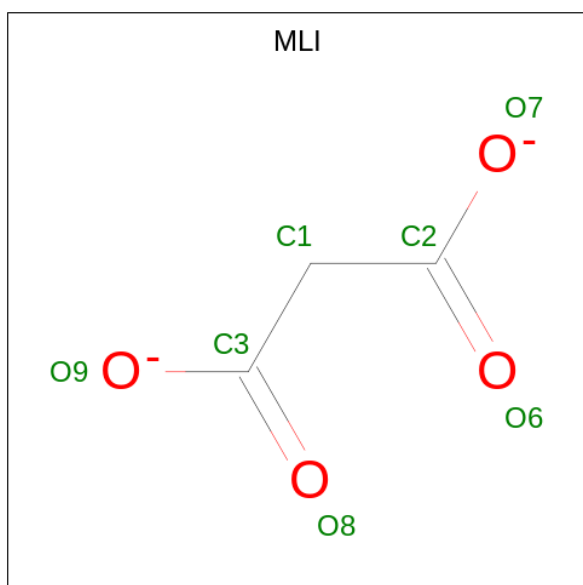
Mol	Chain	Residues	Atoms		ZeroOcc	AltConf
2	A	1	Total	Zn	0	0
			1	1		

- Molecule 3 is O-methyl-L-tyrosine (three-letter code: OA1) (formula:  $C_{10}H_{13}NO_3$ ) (labeled as "Ligand of Interest" by depositor).



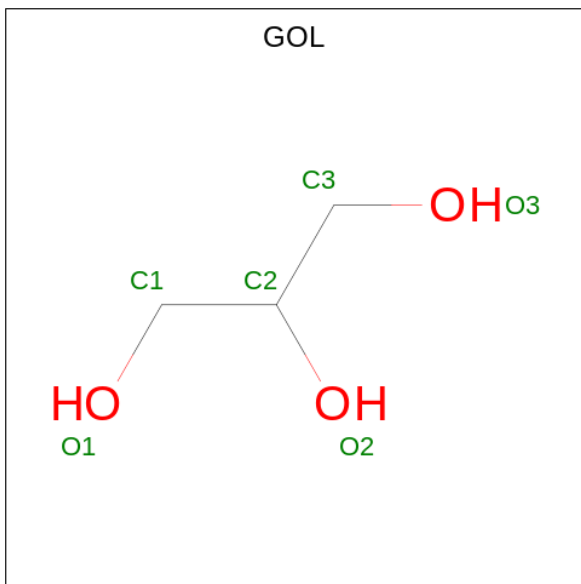
Mol	Chain	Residues	Atoms				ZeroOcc	AltConf
3	A	1	Total	C	N	O	0	0
			14	10	1	3		

- Molecule 4 is MALONATE ION (three-letter code: MLI) (formula:  $C_3H_2O_4$ ).



Mol	Chain	Residues	Atoms	ZeroOcc	AltConf
4	A	1	Total C O 7 3 4	0	0
4	A	1	Total C O 7 3 4	0	0
4	A	1	Total C O 7 3 4	0	0

- Molecule 5 is GLYCEROL (three-letter code: GOL) (formula: C<sub>3</sub>H<sub>8</sub>O<sub>3</sub>).



Mol	Chain	Residues	Atoms	ZeroOcc	AltConf
5	A	1	Total C O 6 3 3	0	0
5	A	1	Total C O 6 3 3	0	0
5	A	1	Total C O 6 3 3	0	0
5	A	1	Total C O 6 3 3	0	0
5	A	1	Total C O 6 3 3	0	0
5	A	1	Total C O 6 3 3	0	0

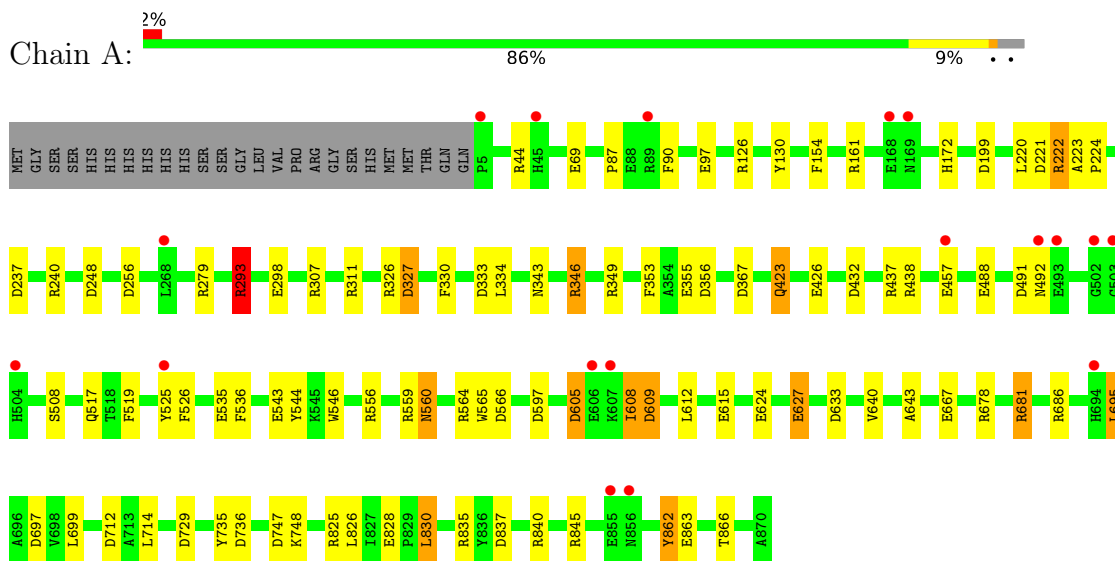
- Molecule 6 is water.

Mol	Chain	Residues	Atoms	ZeroOcc	AltConf
6	A	607	Total O 607 607	0	0

### 3 Residue-property plots

These plots are drawn for all protein, RNA, DNA and oligosaccharide chains in the entry. The first graphic for a chain summarises the proportions of the various outlier classes displayed in the second graphic. The second graphic shows the sequence view annotated by issues in geometry and electron density. Residues are color-coded according to the number of geometric quality criteria for which they contain at least one outlier: green = 0, yellow = 1, orange = 2 and red = 3 or more. A red dot above a residue indicates a poor fit to the electron density ( $RSRZ > 2$ ). Stretches of 2 or more consecutive residues without any outlier are shown as a green connector. Residues present in the sample, but not in the model, are shown in grey.

- Molecule 1: Aminopeptidase N



## 4 Data and refinement statistics

Property	Value	Source
Space group	P 31 2 1	Depositor
Cell constants a, b, c, $\alpha$ , $\beta$ , $\gamma$	120.41Å 120.41Å 169.78Å 90.00° 90.00° 120.00°	Depositor
Resolution (Å)	50.00 – 1.58 32.92 – 1.58	Depositor EDS
% Data completeness (in resolution range)	98.9 (50.00-1.58) 99.0 (32.92-1.58)	Depositor EDS
$R_{merge}$	0.07	Depositor
$R_{sym}$	(Not available)	Depositor
$\langle I/\sigma(I) \rangle$ <sup>1</sup>	2.64 (at 1.58Å)	Xtrriage
Refinement program	REFMAC 5.8.0135	Depositor
R, $R_{free}$	0.164 , 0.182 0.177 , 0.193	Depositor DCC
$R_{free}$ test set	9687 reflections (5.04%)	wwPDB-VP
Wilson B-factor (Å <sup>2</sup> )	25.2	Xtrriage
Anisotropy	0.036	Xtrriage
Bulk solvent $k_{sol}$ (e/Å <sup>3</sup> ), $B_{sol}$ (Å <sup>2</sup> )	0.42 , 45.0	EDS
L-test for twinning <sup>2</sup>	$\langle  L  \rangle = 0.50$ , $\langle L^2 \rangle = 0.33$	Xtrriage
Estimated twinning fraction	0.014 for -h,-k,l	Xtrriage
$F_o, F_c$ correlation	0.97	EDS
Total number of atoms	7661	wwPDB-VP
Average B, all atoms (Å <sup>2</sup> )	27.0	wwPDB-VP

Xtrriage's analysis on translational NCS is as follows: *The largest off-origin peak in the Patterson function is 3.08% of the height of the origin peak. No significant pseudotranslation is detected.*

<sup>1</sup>Intensities estimated from amplitudes.

<sup>2</sup>Theoretical values of  $\langle |L| \rangle$ ,  $\langle L^2 \rangle$  for acentric reflections are 0.5, 0.333 respectively for untwinned datasets, and 0.375, 0.2 for perfectly twinned datasets.



## 5 Model quality [i](#)

### 5.1 Standard geometry [i](#)

Bond lengths and bond angles in the following residue types are not validated in this section: ZN, GOL, MLI, OA1

The Z score for a bond length (or angle) is the number of standard deviations the observed value is removed from the expected value. A bond length (or angle) with  $|Z| > 5$  is considered an outlier worth inspection. RMSZ is the root-mean-square of all Z scores of the bond lengths (or angles).

Mol	Chain	Bond lengths		Bond angles	
		RMSZ	# Z  >5	RMSZ	# Z  >5
1	A	1.26	18/7161 (0.3%)	1.37	65/9722 (0.7%)

Chiral center outliers are detected by calculating the chiral volume of a chiral center and verifying if the center is modelled as a planar moiety or with the opposite hand. A planarity outlier is detected by checking planarity of atoms in a peptide group, atoms in a mainchain group or atoms of a sidechain that are expected to be planar.

Mol	Chain	#Chirality outliers	#Planarity outliers
1	A	0	1

All (18) bond length outliers are listed below:

Mol	Chain	Res	Type	Atoms	Z	Observed(Å)	Ideal(Å)
1	A	525	TYR	CB-CG	8.41	1.64	1.51
1	A	508	SER	CB-OG	-6.66	1.33	1.42
1	A	543	GLU	CD-OE1	6.49	1.32	1.25
1	A	560	ASN	CG-OD1	6.35	1.38	1.24
1	A	667	GLU	CD-OE2	6.24	1.32	1.25
1	A	627	GLU	CD-OE1	6.15	1.32	1.25
1	A	349	ARG	CD-NE	-6.04	1.36	1.46
1	A	560	ASN	CB-CG	5.93	1.64	1.51
1	A	863	GLU	CD-OE2	5.79	1.32	1.25
1	A	624	GLU	CG-CD	5.79	1.60	1.51
1	A	519	PHE	CG-CD1	-5.48	1.30	1.38
1	A	828	GLU	CD-OE2	-5.34	1.19	1.25
1	A	862	TYR	CE1-CZ	-5.29	1.31	1.38
1	A	525	TYR	CG-CD2	5.28	1.46	1.39
1	A	69	GLU	CD-OE2	-5.25	1.19	1.25
1	A	130	TYR	CZ-OH	5.20	1.46	1.37
1	A	426	GLU	CB-CG	-5.09	1.42	1.52
1	A	423	GLN	CG-CD	-5.08	1.39	1.51

All (65) bond angle outliers are listed below:

Mol	Chain	Res	Type	Atoms	Z	Observed(°)	Ideal(°)
1	A	293	ARG	NE-CZ-NH1	29.41	135.00	120.30
1	A	293	ARG	NE-CZ-NH2	-26.93	106.84	120.30
1	A	293	ARG	CD-NE-CZ	13.73	142.82	123.60
1	A	624	GLU	OE1-CD-OE2	11.65	137.28	123.30
1	A	346[A]	ARG	NE-CZ-NH2	-10.87	114.86	120.30
1	A	346[B]	ARG	NE-CZ-NH2	-10.87	114.86	120.30
1	A	712	ASP	CB-CG-OD1	10.46	127.71	118.30
1	A	564[A]	ARG	NE-CZ-NH2	-9.59	115.50	120.30
1	A	564[B]	ARG	NE-CZ-NH2	-9.59	115.50	120.30
1	A	438	ARG	NE-CZ-NH1	8.89	124.75	120.30
1	A	432	ASP	CB-CG-OD1	8.84	126.26	118.30
1	A	126	ARG	NE-CZ-NH2	8.82	124.71	120.30
1	A	686	ARG	NE-CZ-NH2	-8.48	116.06	120.30
1	A	221	ASP	CB-CG-OD1	8.20	125.68	118.30
1	A	333	ASP	CB-CG-OD1	7.98	125.48	118.30
1	A	681	ARG	NE-CZ-NH2	7.92	124.26	120.30
1	A	256	ASP	CB-CG-OD1	7.75	125.28	118.30
1	A	556	ARG	NE-CZ-NH2	7.71	124.16	120.30
1	A	161	ARG	NE-CZ-NH2	-7.59	116.50	120.30
1	A	681	ARG	NE-CZ-NH1	-7.41	116.59	120.30
1	A	695	LEU	CB-CG-CD2	7.38	123.55	111.00
1	A	346[A]	ARG	NE-CZ-NH1	7.31	123.95	120.30
1	A	346[B]	ARG	NE-CZ-NH1	7.31	123.95	120.30
1	A	199	ASP	CB-CG-OD2	-7.06	111.94	118.30
1	A	355	GLU	OE1-CD-OE2	7.05	131.77	123.30
1	A	367	ASP	CB-CG-OD1	7.00	124.61	118.30
1	A	747	ASP	CB-CG-OD2	-6.95	112.04	118.30
1	A	327	ASP	CB-CG-OD1	6.92	124.53	118.30
1	A	97	GLU	OE1-CD-OE2	6.81	131.47	123.30
1	A	307	ARG	NE-CZ-NH2	-6.76	116.92	120.30
1	A	311	ARG	NE-CZ-NH2	-6.71	116.95	120.30
1	A	544	TYR	CZ-CE2-CD2	6.67	125.80	119.80
1	A	566	ASP	CB-CG-OD2	-6.65	112.32	118.30
1	A	830	LEU	CA-CB-CG	6.61	130.51	115.30
1	A	845	ARG	NE-CZ-NH1	6.57	123.58	120.30
1	A	828	GLU	OE1-CD-OE2	-6.52	115.47	123.30
1	A	457	GLU	CA-CB-CG	6.46	127.61	113.40
1	A	633	ASP	CB-CG-OD1	6.36	124.03	118.30
1	A	353	PHE	CB-CG-CD1	6.34	125.24	120.80
1	A	837	ASP	CB-CG-OD1	6.30	123.97	118.30
1	A	154	PHE	CB-CG-CD2	-6.25	116.43	120.80
1	A	697	ASP	CB-CG-OD1	6.06	123.76	118.30

*Continued on next page...*

Continued from previous page...

Mol	Chain	Res	Type	Atoms	Z	Observed(°)	Ideal(°)
1	A	678	ARG	NE-CZ-NH2	-5.93	117.33	120.30
1	A	438	ARG	NE-CZ-NH2	-5.80	117.40	120.30
1	A	240	ARG	NE-CZ-NH2	-5.61	117.50	120.30
1	A	729	ASP	CB-CG-OD1	5.60	123.34	118.30
1	A	597	ASP	CB-CG-OD2	-5.56	113.30	118.30
1	A	609	ASP	CB-CG-OD1	5.49	123.24	118.30
1	A	862	TYR	CB-CG-CD1	-5.49	117.71	121.00
1	A	248	ASP	CB-CG-OD1	-5.46	113.38	118.30
1	A	491	ASP	CB-CG-OD1	5.45	123.21	118.30
1	A	326	ARG	NE-CZ-NH1	5.43	123.01	120.30
1	A	536	PHE	CB-CG-CD1	5.41	124.58	120.80
1	A	237	ASP	CB-CG-OD2	-5.32	113.51	118.30
1	A	298	GLU	OE1-CD-OE2	-5.28	116.97	123.30
1	A	334	LEU	CB-CG-CD1	5.27	119.96	111.00
1	A	126	ARG	NE-CZ-NH1	-5.26	117.67	120.30
1	A	330	PHE	CG-CD2-CE2	5.21	126.53	120.80
1	A	437	ARG	NE-CZ-NH1	5.18	122.89	120.30
1	A	736	ASP	CB-CG-OD1	5.16	122.94	118.30
1	A	605	ASP	CB-CG-OD1	5.14	122.93	118.30
1	A	633	ASP	CB-CG-OD2	-5.12	113.69	118.30
1	A	835	ARG	NE-CZ-NH1	-5.12	117.74	120.30
1	A	735	TYR	CZ-CE2-CD2	-5.11	115.20	119.80
1	A	222	ARG	NE-CZ-NH1	5.08	122.84	120.30

There are no chirality outliers.

All (1) planarity outliers are listed below:

Mol	Chain	Res	Type	Group
1	A	293	ARG	Sidechain

## 5.2 Too-close contacts

In the following table, the Non-H and H(model) columns list the number of non-hydrogen atoms and hydrogen atoms in the chain respectively. The H(added) column lists the number of hydrogen atoms added and optimized by MolProbity. The Clashes column lists the number of clashes within the asymmetric unit, whereas Symm-Clashes lists symmetry-related clashes.

Mol	Chain	Non-H	H(model)	H(added)	Clashes	Symm-Clashes
1	A	6982	0	6836	25	0
2	A	1	0	0	0	0
3	A	14	0	12	0	0

Continued on next page...

Continued from previous page...

Mol	Chain	Non-H	H(model)	H(added)	Clashes	Symm-Clashes
4	A	21	0	6	0	0
5	A	36	0	46	6	0
6	A	607	0	0	9	0
All	All	7661	0	6900	28	0

The all-atom clashscore is defined as the number of clashes found per 1000 atoms (including hydrogen atoms). The all-atom clashscore for this structure is 2.

All (28) close contacts within the same asymmetric unit are listed below, sorted by their clash magnitude.

Atom-1	Atom-2	Interatomic distance (Å)	Clash overlap (Å)
1:A:627:GLU:HG3	6:A:1322:HOH:O	1.67	0.92
1:A:346[A]:ARG:NH1	1:A:615:GLU:OE1	2.12	0.82
5:A:910:GOL:H12	6:A:1556:HOH:O	1.84	0.77
1:A:546:TRP:CZ2	5:A:909:GOL:H2	2.23	0.74
5:A:910:GOL:H11	6:A:1474:HOH:O	1.89	0.73
1:A:535[B]:GLU:OE1	6:A:1001:HOH:O	2.13	0.67
1:A:608:ILE:HD11	1:A:612:LEU:HD23	1.75	0.66
1:A:640:VAL:HG22	5:A:908:GOL:H11	1.81	0.60
1:A:488:GLU:OE2	1:A:559:ARG:NH2	2.36	0.58
1:A:343:ASN:OD1	1:A:346[B]:ARG:NH2	2.37	0.56
1:A:627:GLU:HG2	6:A:1056:HOH:O	2.08	0.53
1:A:862:TYR:O	1:A:866:THR:HG23	2.09	0.52
1:A:825:ARG:NH1	6:A:1011:HOH:O	2.44	0.51
1:A:714:LEU:HD22	1:A:748:LYS:HD3	1.92	0.50
1:A:608:ILE:HD13	1:A:609:ASP:N	2.27	0.50
1:A:346[B]:ARG:HH11	1:A:346[B]:ARG:HD3	1.34	0.47
1:A:840:ARG:HG2	6:A:1201:HOH:O	2.16	0.46
1:A:535[B]:GLU:OE2	1:A:560:ASN:CG	2.54	0.45
1:A:87:PRO:HG2	1:A:90:PHE:HB3	1.99	0.45
1:A:492:ASN:HB3	1:A:526:PHE:CE2	2.52	0.43
5:A:910:GOL:C1	6:A:1474:HOH:O	2.54	0.43
1:A:222:ARG:HG2	1:A:279:ARG:HB2	2.02	0.42
1:A:223:ALA:N	1:A:224:PRO:CD	2.83	0.41
1:A:681:ARG:NH1	6:A:1017:HOH:O	2.46	0.41
1:A:44:ARG:HH11	1:A:44:ARG:HD3	1.65	0.41
1:A:346[A]:ARG:NH2	1:A:565:TRP:HE1	2.18	0.41
1:A:605:ASP:O	1:A:608:ILE:HG22	2.20	0.41
1:A:643:ALA:HB2	5:A:908:GOL:H32	2.02	0.41

There are no symmetry-related clashes.

## 5.3 Torsion angles [i](#)

### 5.3.1 Protein backbone [i](#)

In the following table, the Percentiles column shows the percent Ramachandran outliers of the chain as a percentile score with respect to all X-ray entries followed by that with respect to entries of similar resolution.

The Analysed column shows the number of residues for which the backbone conformation was analysed, and the total number of residues.

Mol	Chain	Analysed	Favoured	Allowed	Outliers	Percentiles
1	A	872/891 (98%)	859 (98%)	13 (2%)	0	100 100

There are no Ramachandran outliers to report.

### 5.3.2 Protein sidechains [i](#)

In the following table, the Percentiles column shows the percent sidechain outliers of the chain as a percentile score with respect to all X-ray entries followed by that with respect to entries of similar resolution.

The Analysed column shows the number of residues for which the sidechain conformation was analysed, and the total number of residues.

Mol	Chain	Analysed	Rotameric	Outliers	Percentiles
1	A	749/763 (98%)	737 (98%)	12 (2%)	62 39

All (12) residues with a non-rotameric sidechain are listed below:

Mol	Chain	Res	Type
1	A	172	HIS
1	A	220	LEU
1	A	293	ARG
1	A	327	ASP
1	A	356	ASP
1	A	423	GLN
1	A	517	GLN
1	A	608	ILE
1	A	695	LEU
1	A	699	LEU
1	A	826	LEU
1	A	830	LEU

Sometimes sidechains can be flipped to improve hydrogen bonding and reduce clashes. All (1) such sidechains are listed below:

Mol	Chain	Res	Type
1	A	423	GLN

### 5.3.3 RNA [i](#)

There are no RNA molecules in this entry.

## 5.4 Non-standard residues in protein, DNA, RNA chains [i](#)

There are no non-standard protein/DNA/RNA residues in this entry.

## 5.5 Carbohydrates [i](#)

There are no monosaccharides in this entry.

## 5.6 Ligand geometry [i](#)

Of 11 ligands modelled in this entry, 1 is monoatomic - leaving 10 for Mogul analysis.

In the following table, the Counts columns list the number of bonds (or angles) for which Mogul statistics could be retrieved, the number of bonds (or angles) that are observed in the model and the number of bonds (or angles) that are defined in the Chemical Component Dictionary. The Link column lists molecule types, if any, to which the group is linked. The Z score for a bond length (or angle) is the number of standard deviations the observed value is removed from the expected value. A bond length (or angle) with  $|Z| > 2$  is considered an outlier worth inspection. RMSZ is the root-mean-square of all Z scores of the bond lengths (or angles).

Mol	Type	Chain	Res	Link	Bond lengths			Bond angles		
					Counts	RMSZ	# Z  > 2	Counts	RMSZ	# Z  > 2
3	0A1	A	902	2	13,14,14	1.11	1 (7%)	17,18,18	1.80	5 (29%)
5	GOL	A	907	-	5,5,5	0.21	0	5,5,5	0.71	0
5	GOL	A	909	-	5,5,5	1.05	0	5,5,5	1.47	2 (40%)
5	GOL	A	910	-	5,5,5	2.14	1 (20%)	5,5,5	2.96	3 (60%)
5	GOL	A	911	-	5,5,5	0.49	0	5,5,5	1.02	0
4	MLI	A	903	-	6,6,6	1.51	0	7,7,7	1.33	1 (14%)
4	MLI	A	905	-	6,6,6	2.04	3 (50%)	7,7,7	1.74	2 (28%)
4	MLI	A	904	-	6,6,6	2.11	3 (50%)	7,7,7	2.58	4 (57%)
5	GOL	A	906	-	5,5,5	0.44	0	5,5,5	0.97	0
5	GOL	A	908	-	5,5,5	1.49	1 (20%)	5,5,5	2.80	2 (40%)

In the following table, the Chirals column lists the number of chiral outliers, the number of chiral centers analysed, the number of these observed in the model and the number defined in the Chemical Component Dictionary. Similar counts are reported in the Torsion and Rings columns. '-' means no outliers of that kind were identified.

Mol	Type	Chain	Res	Link	Chirals	Torsions	Rings
3	0A1	A	902	2	-	0/10/10/10	0/1/1/1
5	GOL	A	907	-	-	2/4/4/4	-
5	GOL	A	909	-	-	2/4/4/4	-
5	GOL	A	910	-	-	2/4/4/4	-
5	GOL	A	911	-	-	2/4/4/4	-
4	MLI	A	903	-	-	0/4/4/4	-
4	MLI	A	905	-	-	0/4/4/4	-
4	MLI	A	904	-	-	2/4/4/4	-
5	GOL	A	906	-	-	2/4/4/4	-
5	GOL	A	908	-	-	3/4/4/4	-

All (9) bond length outliers are listed below:

Mol	Chain	Res	Type	Atoms	Z	Observed(Å)	Ideal(Å)
5	A	910	GOL	O2-C2	4.26	1.56	1.43
4	A	904	MLI	C1-C2	3.54	1.56	1.51
4	A	905	MLI	C1-C3	3.46	1.56	1.51
5	A	908	GOL	O1-C1	2.43	1.52	1.42
4	A	905	MLI	O9-C3	-2.43	1.22	1.30
4	A	904	MLI	O8-C3	2.25	1.29	1.22
3	A	902	0A1	OH-CZ	2.23	1.42	1.37
4	A	904	MLI	C1-C3	2.10	1.54	1.51
4	A	905	MLI	C1-C2	2.06	1.54	1.51

All (19) bond angle outliers are listed below:

Mol	Chain	Res	Type	Atoms	Z	Observed(°)	Ideal(°)
5	A	908	GOL	C3-C2-C1	5.56	133.32	111.70
5	A	910	GOL	C3-C2-C1	-5.04	92.10	111.70
4	A	904	MLI	O7-C2-O6	-3.96	113.43	123.30
3	A	902	0A1	CG-CB-CA	3.77	121.97	114.13
4	A	904	MLI	C3-C1-C2	-3.50	100.62	112.87
5	A	910	GOL	O1-C1-C2	3.04	124.75	110.20
4	A	904	MLI	O7-C2-C1	2.98	124.05	114.54
3	A	902	0A1	CD1-CE1-CZ	-2.90	116.19	119.73
3	A	902	0A1	CB-CG-CD2	-2.64	115.67	120.91
4	A	904	MLI	O9-C3-O8	-2.52	117.01	123.30

*Continued on next page...*

Continued from previous page...

Mol	Chain	Res	Type	Atoms	Z	Observed(°)	Ideal(°)
3	A	902	0A1	CM-OH-CZ	-2.48	112.13	117.51
4	A	903	MLI	C3-C1-C2	-2.47	104.22	112.87
5	A	910	GOL	O2-C2-C3	2.31	119.31	109.12
5	A	909	GOL	O2-C2-C3	2.30	119.23	109.12
5	A	909	GOL	O2-C2-C1	2.29	119.19	109.12
3	A	902	0A1	CB-CG-CD1	2.25	125.37	120.91
4	A	905	MLI	O7-C2-C1	2.21	121.61	114.54
4	A	905	MLI	C3-C1-C2	-2.19	105.18	112.87
5	A	908	GOL	O1-C1-C2	2.09	120.23	110.20

There are no chirality outliers.

All (15) torsion outliers are listed below:

Mol	Chain	Res	Type	Atoms
5	A	907	GOL	C1-C2-C3-O3
5	A	907	GOL	O2-C2-C3-O3
5	A	908	GOL	O1-C1-C2-C3
5	A	911	GOL	O1-C1-C2-C3
5	A	908	GOL	O1-C1-C2-O2
5	A	909	GOL	O1-C1-C2-O2
5	A	909	GOL	O2-C2-C3-O3
5	A	911	GOL	O1-C1-C2-O2
5	A	908	GOL	O2-C2-C3-O3
5	A	910	GOL	O2-C2-C3-O3
5	A	906	GOL	C1-C2-C3-O3
4	A	904	MLI	C2-C1-C3-O8
4	A	904	MLI	C2-C1-C3-O9
5	A	906	GOL	O2-C2-C3-O3
5	A	910	GOL	C1-C2-C3-O3

There are no ring outliers.

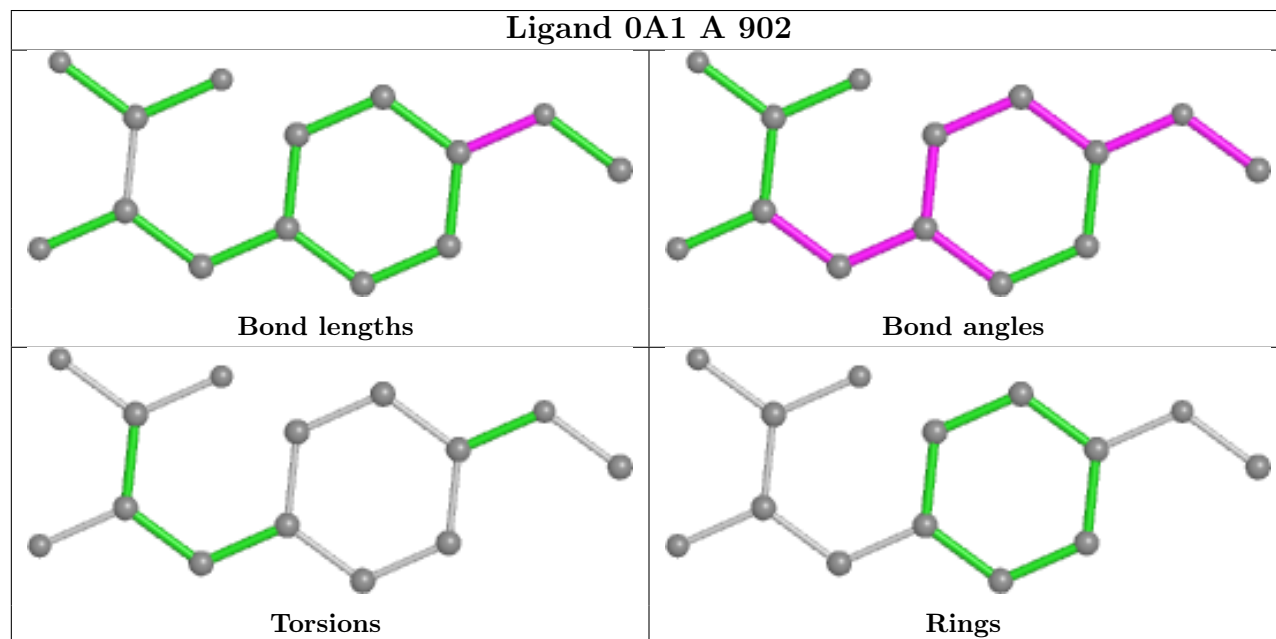
3 monomers are involved in 6 short contacts:

Mol	Chain	Res	Type	Clashes	Symm-Clashes
5	A	909	GOL	1	0
5	A	910	GOL	3	0
5	A	908	GOL	2	0

The following is a two-dimensional graphical depiction of Mogul quality analysis of bond lengths, bond angles, torsion angles, and ring geometry for all instances of the Ligand of Interest. In addition, ligands with molecular weight > 250 and outliers as shown on the validation Tables will



also be included. For torsion angles, if less than 5% of the Mogul distribution of torsion angles is within 10 degrees of the torsion angle in question, then that torsion angle is considered an outlier. Any bond that is central to one or more torsion angles identified as an outlier by Mogul will be highlighted in the graph. For rings, the root-mean-square deviation (RMSD) between the ring in question and similar rings identified by Mogul is calculated over all ring torsion angles. If the average RMSD is greater than 60 degrees and the minimal RMSD between the ring in question and any Mogul-identified rings is also greater than 60 degrees, then that ring is considered an outlier. The outliers are highlighted in purple. The color gray indicates Mogul did not find sufficient equivalents in the CSD to analyse the geometry.



## 5.7 Other polymers [i](#)

There are no such residues in this entry.

## 5.8 Polymer linkage issues [i](#)

There are no chain breaks in this entry.

## 6 Fit of model and data [i](#)

### 6.1 Protein, DNA and RNA chains [i](#)

In the following table, the column labelled ‘#RSRZ > 2’ contains the number (and percentage) of RSRZ outliers, followed by percent RSRZ outliers for the chain as percentile scores relative to all X-ray entries and entries of similar resolution. The OWAB column contains the minimum, median, 95<sup>th</sup> percentile and maximum values of the occupancy-weighted average B-factor per residue. The column labelled ‘Q < 0.9’ lists the number of (and percentage) of residues with an average occupancy less than 0.9.

Mol	Chain	Analysed	<RSRZ>	#RSRZ>2	OWAB(Å <sup>2</sup> )	Q<0.9
1	A	866/891 (97%)	-0.16	18 (2%) 63 65	18, 25, 38, 63	0

All (18) RSRZ outliers are listed below:

Mol	Chain	Res	Type	RSRZ
1	A	504	HIS	5.3
1	A	606	GLU	4.7
1	A	169	ASN	4.6
1	A	168	GLU	3.8
1	A	525	TYR	3.5
1	A	503	GLY	3.4
1	A	855	GLU	3.3
1	A	694	HIS	3.3
1	A	5	PRO	3.3
1	A	607	LYS	3.3
1	A	502	GLY	3.0
1	A	493	GLU	2.8
1	A	856	ASN	2.5
1	A	268	LEU	2.4
1	A	457	GLU	2.2
1	A	45	HIS	2.1
1	A	89	ARG	2.0
1	A	492	ASN	2.0

### 6.2 Non-standard residues in protein, DNA, RNA chains [i](#)

There are no non-standard protein/DNA/RNA residues in this entry.

### 6.3 Carbohydrates [i](#)

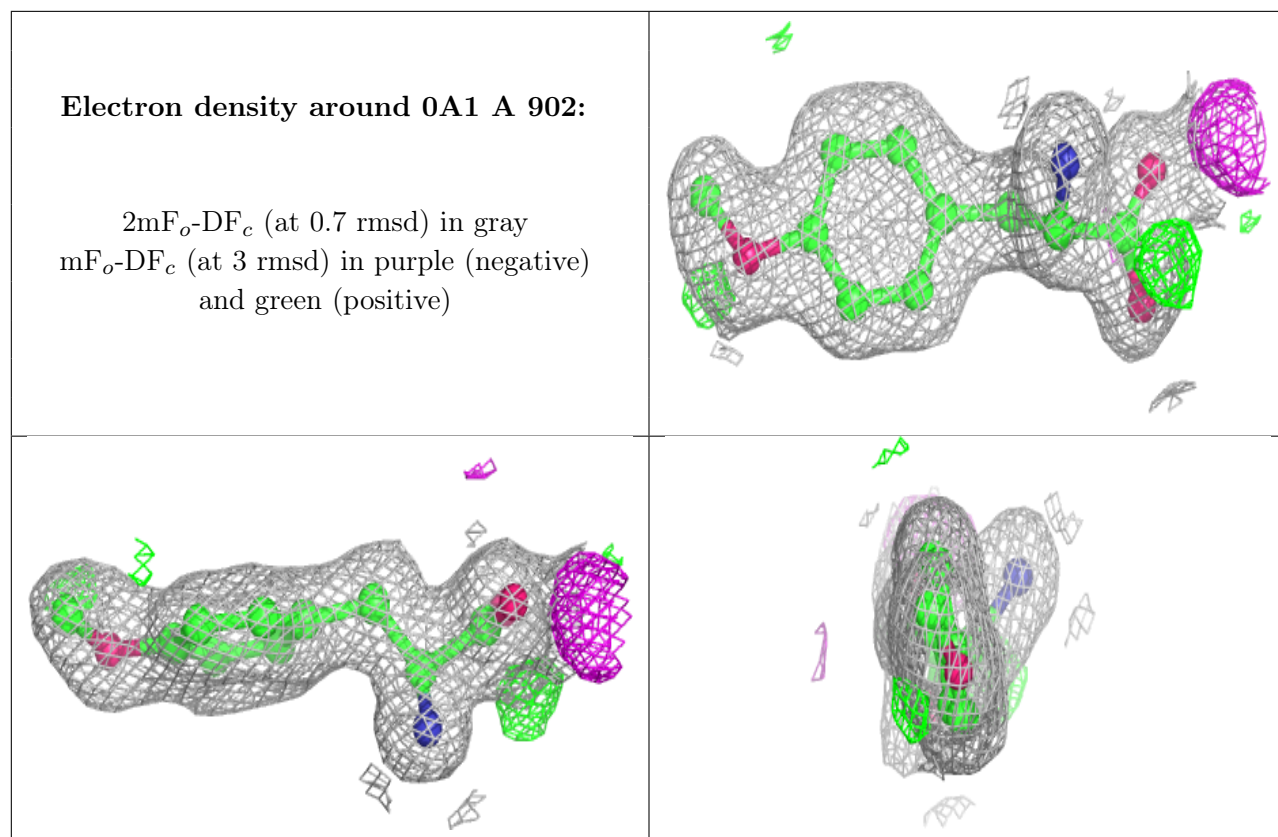
There are no monosaccharides in this entry.

### 6.4 Ligands [i](#)

In the following table, the Atoms column lists the number of modelled atoms in the group and the number defined in the chemical component dictionary. The B-factors column lists the minimum, median, 95<sup>th</sup> percentile and maximum values of B factors of atoms in the group. The column labelled 'Q< 0.9' lists the number of atoms with occupancy less than 0.9.

Mol	Type	Chain	Res	Atoms	RSCC	RSR	B-factors(Å <sup>2</sup> )	Q<0.9
5	GOL	A	910	6/6	0.42	0.18	43,54,56,61	0
4	MLI	A	904	7/7	0.75	0.29	49,57,64,74	0
5	GOL	A	907	6/6	0.83	0.25	55,60,68,80	0
5	GOL	A	908	6/6	0.86	0.20	31,36,45,52	0
5	GOL	A	906	6/6	0.86	0.10	54,62,63,72	0
4	MLI	A	903	7/7	0.90	0.10	30,33,38,41	0
4	MLI	A	905	7/7	0.91	0.20	44,48,51,55	0
5	GOL	A	909	6/6	0.93	0.17	33,39,45,62	0
5	GOL	A	911	6/6	0.93	0.20	43,51,56,59	0
3	0A1	A	902	14/14	0.96	0.08	20,22,29,36	0
2	ZN	A	901	1/1	1.00	0.03	19,19,19,19	0

The following is a graphical depiction of the model fit to experimental electron density of all instances of the Ligand of Interest. In addition, ligands with molecular weight > 250 and outliers as shown on the geometry validation Tables will also be included. Each fit is shown from different orientation to approximate a three-dimensional view.



## 6.5 Other polymers [i](#)

There are no such residues in this entry.