



wwPDB X-ray Structure Validation Summary Report

Sep 4, 2024 – 04:09 PM JST

PDB ID : 8YQ9
Title : Quadruple mutant (N51I+C59R+S108N+I164L) Plasmodium falciparum dihydrofolate reductase-thymidylate synthase (PfDHFR-TS V1/S) complexed with FB6, NADPH and dUMP
Authors : Vanichtanankul, J.; Vitsupakorn, D.; Saeyang, T.; Arwon, U.; Hoarau, M.; Decharuangsilp, S.; Kamchonwongpaisan, S.; Yuthavong, Y.
Deposited on : 2024-03-19
Resolution : 2.40 Å(reported)

This is a wwPDB X-ray Structure Validation Summary Report for a publicly released PDB entry.

We welcome your comments at validation@mail.wwpdb.org

A user guide is available at

<https://www.wwpdb.org/validation/2017/XrayValidationReportHelp>

with specific help available everywhere you see the  symbol.

The types of validation reports are described at

<http://www.wwpdb.org/validation/2017/FAQs#types>.

The following versions of software and data (see [references](#) ①) were used in the production of this report:

MolProbity : 4.02b-467
Mogul : 1.8.5 (274361), CSD as541be (2020)
Xtrriage (Phenix) : 1.13
EDS : 3.0
buster-report : 1.1.7 (2018)
Percentile statistics : 20231227.v01 (using entries in the PDB archive December 27th 2023)
CCP4 : 9.0.002 (Gargrove)
Density-Fitness : 1.0.11
Ideal geometry (proteins) : Engh & Huber (2001)
Ideal geometry (DNA, RNA) : Parkinson et al. (1996)
Validation Pipeline (wwPDB-VP) : 2.38.2

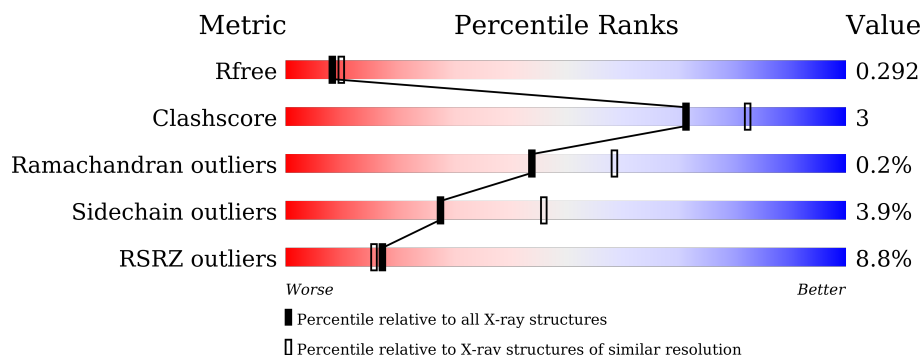
1 Overall quality at a glance

The following experimental techniques were used to determine the structure:

X-RAY DIFFRACTION

The reported resolution of this entry is 2.40 Å.

Percentile scores (ranging between 0-100) for global validation metrics of the entry are shown in the following graphic. The table shows the number of entries on which the scores are based.



Metric	Whole archive (#Entries)	Similar resolution (#Entries, resolution range(Å))
R_{free}	164625	4642 (2.40-2.40)
Clashscore	180529	5218 (2.40-2.40)
Ramachandran outliers	177936	5158 (2.40-2.40)
Sidechain outliers	177891	5159 (2.40-2.40)
RSRZ outliers	164620	4642 (2.40-2.40)

The table below summarises the geometric issues observed across the polymeric chains and their fit to the electron density. The red, orange, yellow and green segments of the lower bar indicate the fraction of residues that contain outliers for ≥ 3 , 2, 1 and 0 types of geometric quality criteria respectively. A grey segment represents the fraction of residues that are not modelled. The numeric value for each fraction is indicated below the corresponding segment, with a dot representing fractions $\leq 5\%$. The upper red bar (where present) indicates the fraction of residues that have poor fit to the electron density. The numeric value is given above the bar.

Mol	Chain	Length	Quality of chain
1	A	608	
1	B	608	

2 Entry composition [i](#)

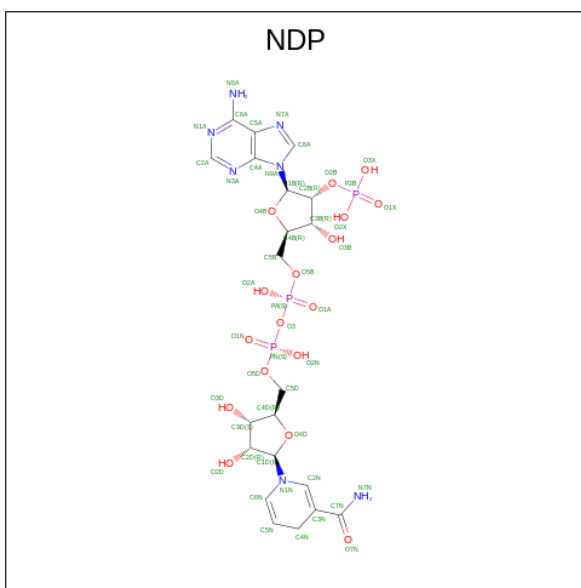
There are 6 unique types of molecules in this entry. The entry contains 9243 atoms, of which 0 are hydrogens and 0 are deuteriums.

In the tables below, the ZeroOcc column contains the number of atoms modelled with zero occupancy, the AltConf column contains the number of residues with at least one atom in alternate conformation and the Trace column contains the number of residues modelled with at most 2 atoms.

- Molecule 1 is a protein called Bifunctional dihydrofolate reductase-thymidylate synthase.

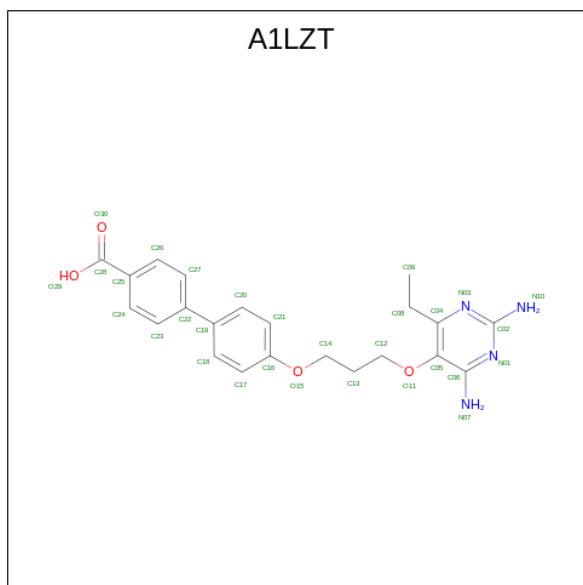
Mol	Chain	Residues	Atoms					ZeroOcc	AltConf	Trace
			Total	C	N	O	S			
1	A	523	Total	C	N	O	S	0	0	0
			4356	2823	718	791	24			
1	B	520	Total	C	N	O	S	0	0	0
			4328	2806	716	782	24			

- Molecule 2 is NADPH DIHYDRO-NICOTINAMIDE-ADENINE-DINUCLEOTIDE PHOSPHATE (three-letter code: NDP) (formula: C₂₁H₃₀N₇O₁₇P₃).



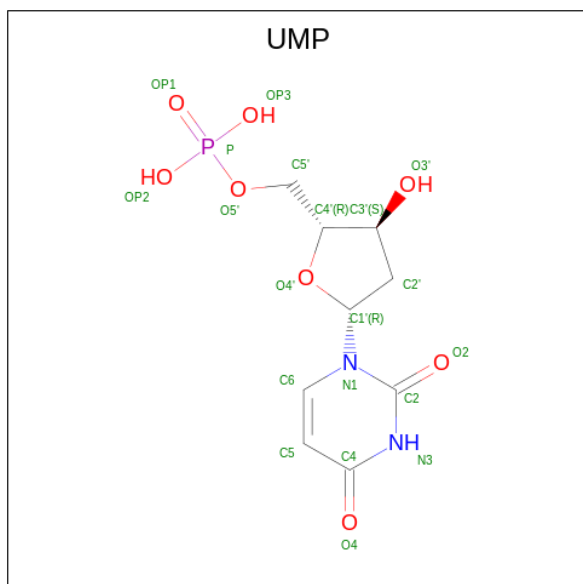
Mol	Chain	Residues	Atoms					ZeroOcc	AltConf
			Total	C	N	O	P		
2	A	1	Total	C	N	O	P	0	0
			48	21	7	17	3		
2	B	1	Total	C	N	O	P	0	0
			48	21	7	17	3		

- Molecule 3 is 4-[4-[3-[2,4-bis(azanyl)-6-ethyl-pyrimidin-5-yl]oxypropoxy]phenyl]benzoic acid (three-letter code: A1LZT) (formula: C₂₂H₂₄N₄O₄) (labeled as "Ligand of Interest" by depositor).



Mol	Chain	Residues	Atoms				ZeroOcc	AltConf
			Total	C	N	O		
3	A	1	30	22	4	4	0	0
3	B	1	30	22	4	4	0	0

- Molecule 4 is 2'-DEOXYURIDINE 5'-MONOPHOSPHATE (three-letter code: UMP) (formula: $C_9H_{13}N_2O_8P$).



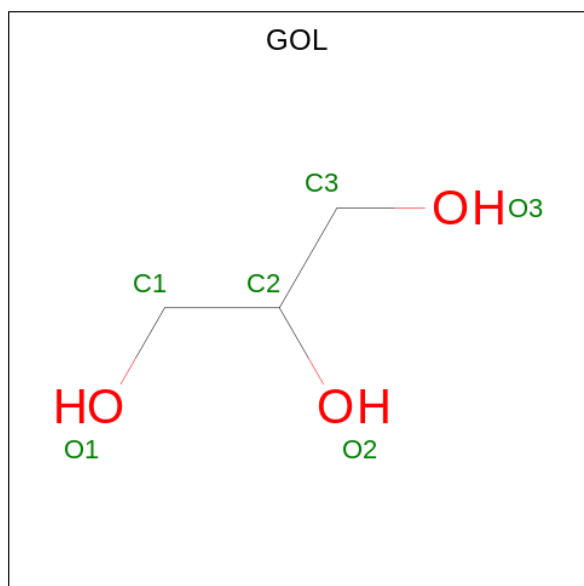
Mol	Chain	Residues	Atoms					ZeroOcc	AltConf
			Total	C	N	O	P		
4	A	1	20	9	2	8	1	0	0

Continued on next page...

Continued from previous page...

Mol	Chain	Residues	Atoms					ZeroOcc	AltConf
4	B	1	Total	C	N	O	P	0	0
			20	9	2	8	1		

- Molecule 5 is GLYCEROL (three-letter code: GOL) (formula: C₃H₈O₃).



Mol	Chain	Residues	Atoms			ZeroOcc	AltConf
5	A	1	Total	C	O	0	0
			6	3	3		
5	B	1	Total	C	O	0	0
			6	3	3		

- Molecule 6 is water.

Mol	Chain	Residues	Atoms		ZeroOcc	AltConf
6	A	194	Total	O	0	0
			194	194		
6	B	157	Total	O	0	0
			157	157		

4 Data and refinement statistics i

Property	Value	Source
Space group	P 21 21 21	Depositor
Cell constants a, b, c, α , β , γ	58.06Å 156.50Å 164.87Å 90.00° 90.00° 90.00°	Depositor
Resolution (Å)	24.63 – 2.40 24.63 – 2.40	Depositor EDS
% Data completeness (in resolution range)	97.6 (24.63-2.40) 97.6 (24.63-2.40)	Depositor EDS
R_{merge}	0.14	Depositor
R_{sym}	(Not available)	Depositor
$\langle I/\sigma(I) \rangle$ ¹	3.35 (at 2.41Å)	Xtrriage
Refinement program	REFMAC 5.8.0425	Depositor
R, R_{free}	0.217 , 0.291 0.223 , 0.292	Depositor DCC
R_{free} test set	2975 reflections (4.98%)	wwPDB-VP
Wilson B-factor (Å ²)	29.7	Xtrriage
Anisotropy	0.311	Xtrriage
Bulk solvent k_{sol} (e/Å ³), B_{sol} (Å ²)	0.36 , 54.1	EDS
L-test for twinning ²	$\langle L \rangle = 0.51$, $\langle L^2 \rangle = 0.35$	Xtrriage
Estimated twinning fraction	0.000 for -h,l,k	Xtrriage
F_o, F_c correlation	0.93	EDS
Total number of atoms	9243	wwPDB-VP
Average B, all atoms (Å ²)	42.0	wwPDB-VP

Xtrriage's analysis on translational NCS is as follows: *The largest off-origin peak in the Patterson function is 3.71% of the height of the origin peak. No significant pseudotranslation is detected.*

¹Intensities estimated from amplitudes.

²Theoretical values of $\langle |L| \rangle$, $\langle L^2 \rangle$ for acentric reflections are 0.5, 0.333 respectively for untwinned datasets, and 0.375, 0.2 for perfectly twinned datasets.

5 Model quality [i](#)

5.1 Standard geometry [i](#)

Bond lengths and bond angles in the following residue types are not validated in this section: UMP, NDP, GOL, A1LZT

The Z score for a bond length (or angle) is the number of standard deviations the observed value is removed from the expected value. A bond length (or angle) with $|Z| > 5$ is considered an outlier worth inspection. RMSZ is the root-mean-square of all Z scores of the bond lengths (or angles).

Mol	Chain	Bond lengths		Bond angles	
		RMSZ	# Z >5	RMSZ	# Z >5
1	A	0.51	0/4459	0.97	4/6024 (0.1%)
1	B	0.48	0/4429	0.91	0/5981
All	All	0.50	0/8888	0.94	4/12005 (0.0%)

Chiral center outliers are detected by calculating the chiral volume of a chiral center and verifying if the center is modelled as a planar moiety or with the opposite hand. A planarity outlier is detected by checking planarity of atoms in a peptide group, atoms in a mainchain group or atoms of a sidechain that are expected to be planar.

Mol	Chain	#Chirality outliers	#Planarity outliers
1	A	0	1
1	B	0	3
All	All	0	4

There are no bond length outliers.

All (4) bond angle outliers are listed below:

Mol	Chain	Res	Type	Atoms	Z	Observed(°)	Ideal(°)
1	A	122	ARG	NE-CZ-NH1	6.40	123.50	120.30
1	A	455	GLN	CB-CA-C	5.78	121.96	110.40
1	A	471	ARG	NE-CZ-NH2	-5.73	117.43	120.30
1	A	482	LEU	CB-CG-CD2	5.25	119.92	111.00

There are no chirality outliers.

All (4) planarity outliers are listed below:

Mol	Chain	Res	Type	Group
1	A	470	ARG	Sidechain
1	B	435	ARG	Sidechain

Continued on next page...

Continued from previous page...

Mol	Chain	Res	Type	Group
1	B	470	ARG	Sidechain
1	B	77	ARG	Sidechain

5.2 Too-close contacts [i](#)

In the following table, the Non-H and H(model) columns list the number of non-hydrogen atoms and hydrogen atoms in the chain respectively. The H(added) column lists the number of hydrogen atoms added and optimized by MolProbity. The Clashes column lists the number of clashes within the asymmetric unit, whereas Symm-Clashes lists symmetry-related clashes.

Mol	Chain	Non-H	H(model)	H(added)	Clashes	Symm-Clashes
1	A	4356	0	4310	28	0
1	B	4328	0	4297	32	0
2	A	48	0	26	1	0
2	B	48	0	26	2	0
3	A	30	0	0	0	0
3	B	30	0	0	0	0
4	A	20	0	11	1	0
4	B	20	0	11	1	0
5	A	6	0	8	2	0
5	B	6	0	8	0	0
6	A	194	0	0	0	0
6	B	157	0	0	4	0
All	All	9243	0	8697	57	0

The all-atom clashscore is defined as the number of clashes found per 1000 atoms (including hydrogen atoms). The all-atom clashscore for this structure is 3.

The worst 5 of 57 close contacts within the same asymmetric unit are listed below, sorted by their clash magnitude.

Atom-1	Atom-2	Interatomic distance (Å)	Clash overlap (Å)
1:B:210:VAL:HG12	1:B:224:ILE:HG22	1.76	0.68
1:A:492:ILE:HG22	1:A:493:LEU:HD23	1.77	0.65
1:A:506:ILE:HD12	1:B:354:PHE:CZ	2.34	0.62
1:B:8:VAL:HA	1:B:76:LYS:HD2	1.80	0.61
1:B:547:LEU:HD12	1:B:547:LEU:N	2.17	0.59

There are no symmetry-related clashes.

5.3 Torsion angles [i](#)

5.3.1 Protein backbone [i](#)

In the following table, the Percentiles column shows the percent Ramachandran outliers of the chain as a percentile score with respect to all X-ray entries followed by that with respect to entries of similar resolution.

The Analysed column shows the number of residues for which the backbone conformation was analysed, and the total number of residues.

Mol	Chain	Analysed	Favoured	Allowed	Outliers	Percentiles	
1	A	513/608 (84%)	491 (96%)	22 (4%)	0	100	100
1	B	508/608 (84%)	485 (96%)	21 (4%)	2 (0%)	30	44
All	All	1021/1216 (84%)	976 (96%)	43 (4%)	2 (0%)	44	59

All (2) Ramachandran outliers are listed below:

Mol	Chain	Res	Type
1	B	309	PRO
1	B	429	ILE

5.3.2 Protein sidechains [i](#)

In the following table, the Percentiles column shows the percent sidechain outliers of the chain as a percentile score with respect to all X-ray entries followed by that with respect to entries of similar resolution.

The Analysed column shows the number of residues for which the sidechain conformation was analysed, and the total number of residues.

Mol	Chain	Analysed	Rotameric	Outliers	Percentiles	
1	A	489/570 (86%)	478 (98%)	11 (2%)	47	67
1	B	486/570 (85%)	459 (94%)	27 (6%)	17	30
All	All	975/1140 (86%)	937 (96%)	38 (4%)	27	46

5 of 38 residues with a non-rotameric sidechain are listed below:

Mol	Chain	Res	Type
1	B	283	ASP
1	B	601	LYS
1	B	307	ILE
1	B	437	PHE

Continued on next page...

Continued from previous page...

Mol	Chain	Res	Type
1	B	605	ASP

Sometimes sidechains can be flipped to improve hydrogen bonding and reduce clashes. All (5) such sidechains are listed below:

Mol	Chain	Res	Type
1	A	342	GLN
1	A	407	ASN
1	A	537	ASN
1	A	542	GLN
1	B	294	ASN

5.3.3 RNA [i](#)

There are no RNA molecules in this entry.

5.4 Non-standard residues in protein, DNA, RNA chains [i](#)

There are no non-standard protein/DNA/RNA residues in this entry.

5.5 Carbohydrates [i](#)

There are no oligosaccharides in this entry.

5.6 Ligand geometry [i](#)

8 ligands are modelled in this entry.

In the following table, the Counts columns list the number of bonds (or angles) for which Mogul statistics could be retrieved, the number of bonds (or angles) that are observed in the model and the number of bonds (or angles) that are defined in the Chemical Component Dictionary. The Link column lists molecule types, if any, to which the group is linked. The Z score for a bond length (or angle) is the number of standard deviations the observed value is removed from the expected value. A bond length (or angle) with $|Z| > 2$ is considered an outlier worth inspection. RMSZ is the root-mean-square of all Z scores of the bond lengths (or angles).

Mol	Type	Chain	Res	Link	Bond lengths			Bond angles		
					Counts	RMSZ	$\# Z > 2$	Counts	RMSZ	$\# Z > 2$
5	GOL	B	703	-	5,5,5	0.16	0	5,5,5	0.43	0
4	UMP	A	703	-	21,21,21	0.50	0	31,31,31	0.80	1 (3%)

Mol	Type	Chain	Res	Link	Bond lengths			Bond angles		
					Counts	RMSZ	# Z > 2	Counts	RMSZ	# Z > 2
4	UMP	B	704	-	21,21,21	0.51	0	31,31,31	0.88	0
3	A1LZT	A	702	-	31,32,32	2.02	7 (22%)	40,43,43	1.74	11 (27%)
2	NDP	A	701	-	45,52,52	0.66	1 (2%)	53,80,80	0.95	3 (5%)
2	NDP	B	701	-	45,52,52	0.62	0	53,80,80	0.92	1 (1%)
3	A1LZT	B	702	-	31,32,32	1.99	5 (16%)	40,43,43	1.84	10 (25%)
5	GOL	A	704	-	5,5,5	0.16	0	5,5,5	0.45	0

In the following table, the Chirals column lists the number of chiral outliers, the number of chiral centers analysed, the number of these observed in the model and the number defined in the Chemical Component Dictionary. Similar counts are reported in the Torsion and Rings columns. '-' means no outliers of that kind were identified.

Mol	Type	Chain	Res	Link	Chirals	Torsions	Rings
5	GOL	B	703	-	-	0/4/4/4	-
4	UMP	A	703	-	-	4/10/22/22	0/2/2/2
4	UMP	B	704	-	-	2/10/22/22	0/2/2/2
3	A1LZT	A	702	-	-	4/18/18/18	0/3/3/3
2	NDP	A	701	-	-	1/30/77/77	0/5/5/5
2	NDP	B	701	-	-	5/30/77/77	0/5/5/5
3	A1LZT	B	702	-	-	6/18/18/18	0/3/3/3
5	GOL	A	704	-	-	4/4/4/4	-

The worst 5 of 13 bond length outliers are listed below:

Mol	Chain	Res	Type	Atoms	Z	Observed(Å)	Ideal(Å)
3	A	702	A1LZT	C02-N10	6.76	1.47	1.33
3	B	702	A1LZT	C02-N10	6.37	1.46	1.33
3	B	702	A1LZT	C06-N07	5.68	1.48	1.34
3	A	702	A1LZT	C06-N07	4.35	1.45	1.34
3	A	702	A1LZT	C08-C04	3.07	1.56	1.51

The worst 5 of 26 bond angle outliers are listed below:

Mol	Chain	Res	Type	Atoms	Z	Observed(°)	Ideal(°)
3	B	702	A1LZT	C02-N01-C06	5.68	123.25	116.99
3	A	702	A1LZT	C02-N03-C04	4.46	119.96	116.24
3	B	702	A1LZT	C02-N03-C04	3.87	119.47	116.24
3	A	702	A1LZT	C02-N01-C06	3.27	120.60	116.99
3	A	702	A1LZT	C09-C08-C04	-3.23	106.91	114.88

There are no chirality outliers.

5 of 26 torsion outliers are listed below:

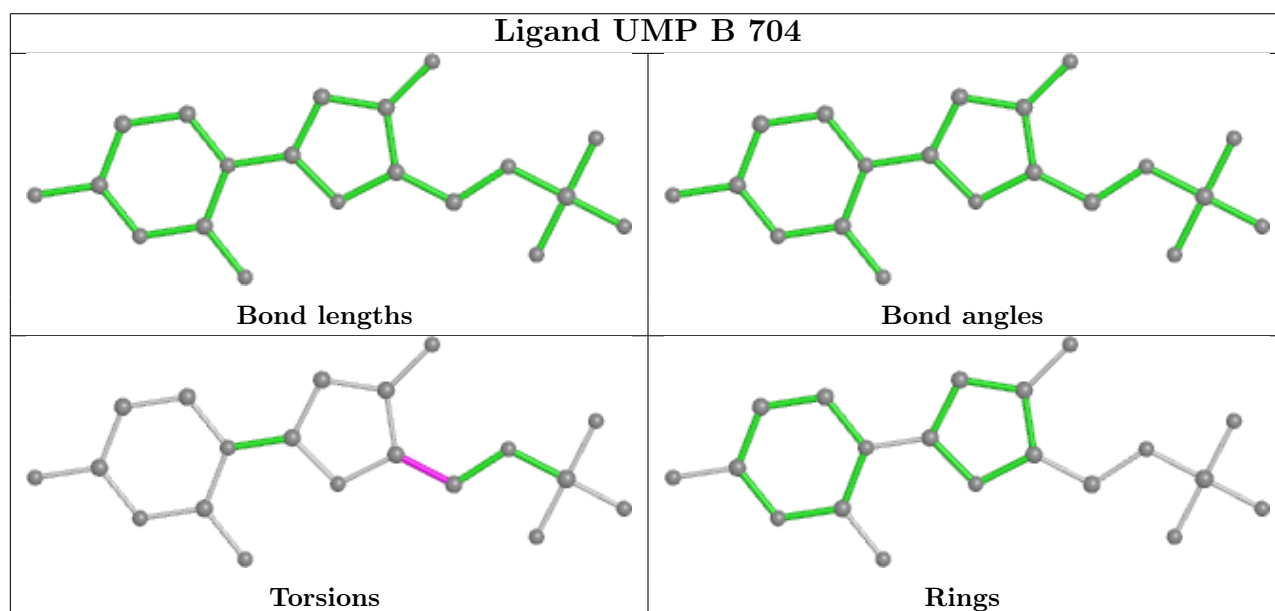
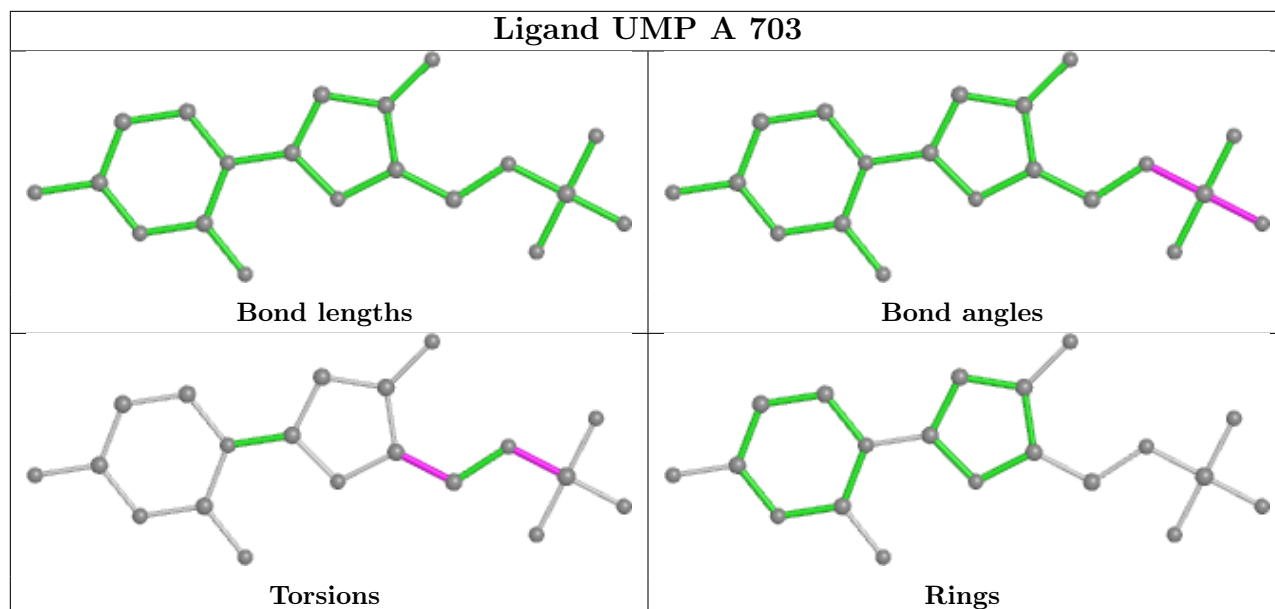
Mol	Chain	Res	Type	Atoms
3	B	702	A1LZT	C04-C05-O11-C12
3	B	702	A1LZT	C06-C05-O11-C12
4	A	703	UMP	C5'-O5'-P-OP1
4	A	703	UMP	C5'-O5'-P-OP2
4	A	703	UMP	C5'-O5'-P-OP3

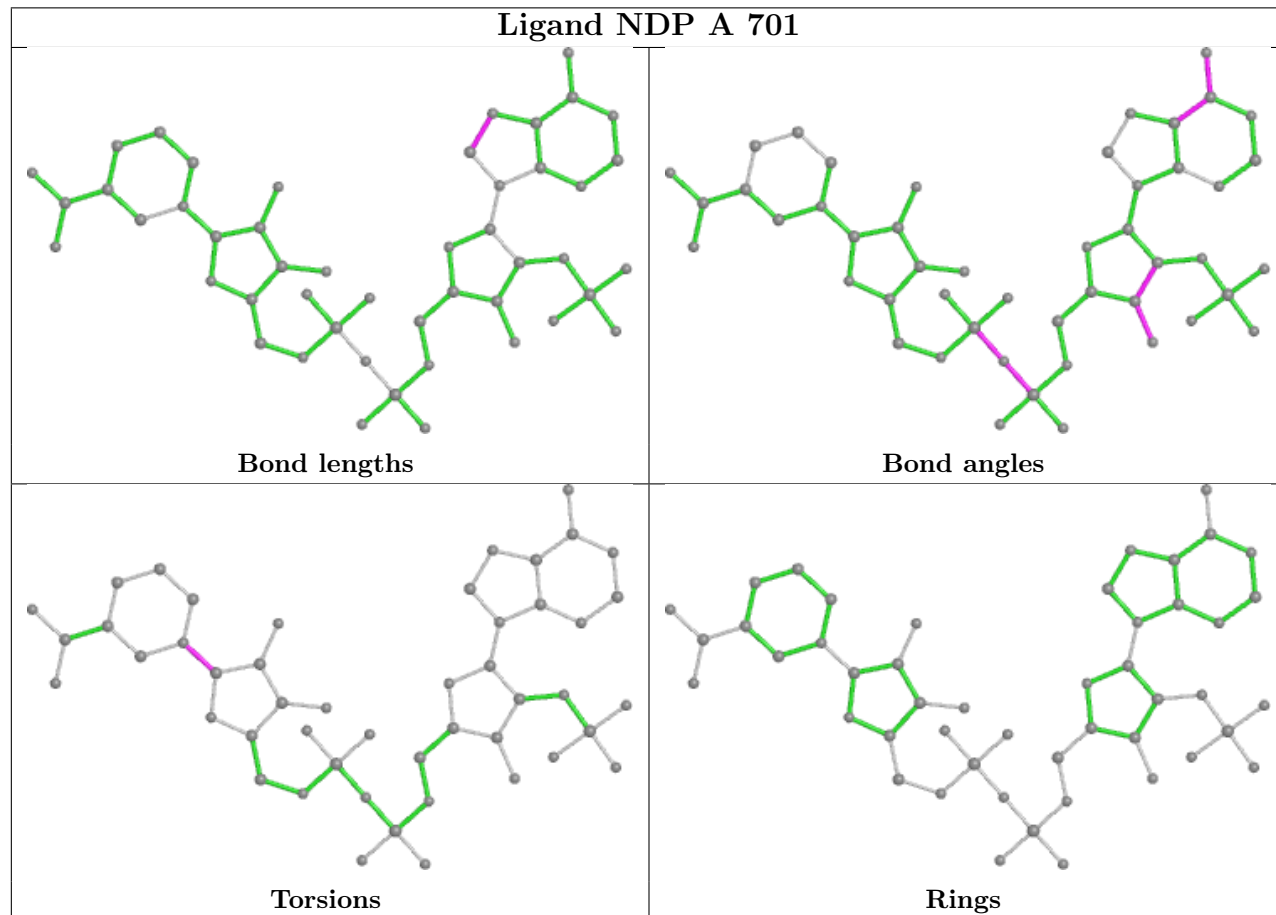
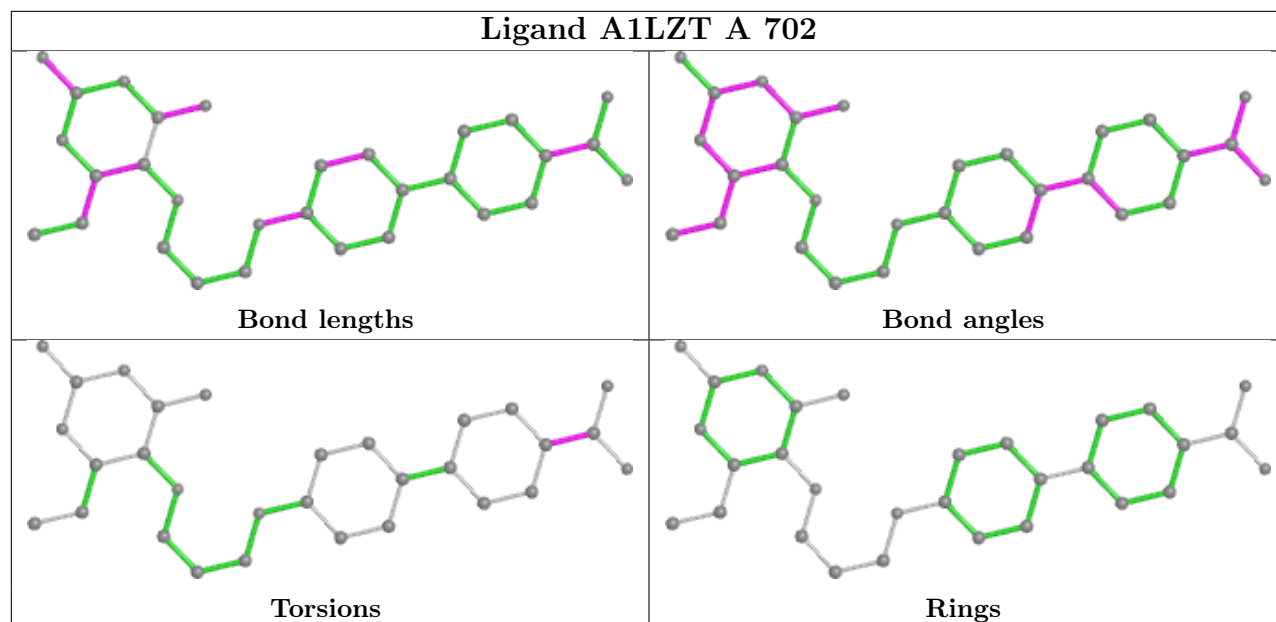
There are no ring outliers.

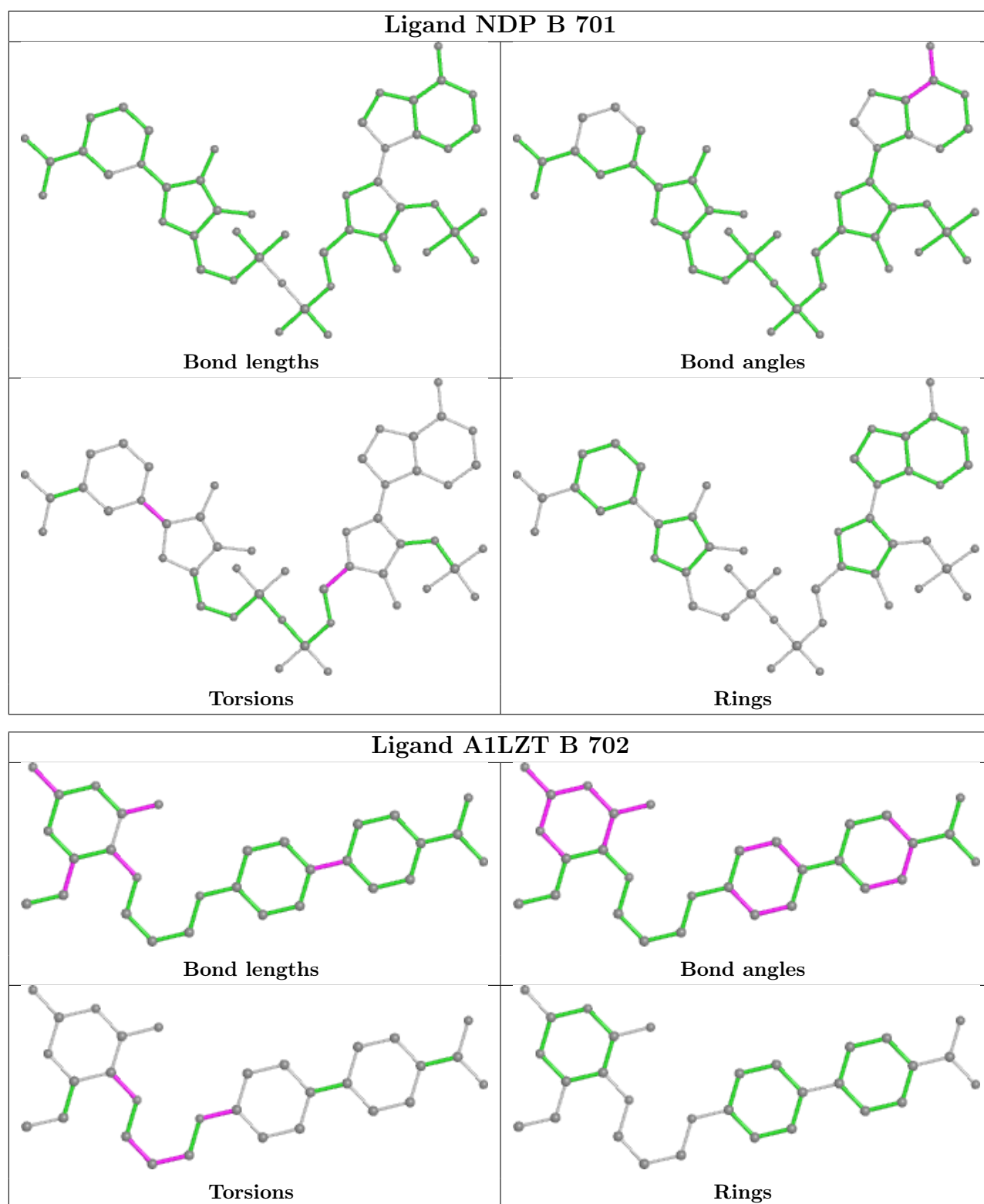
5 monomers are involved in 7 short contacts:

Mol	Chain	Res	Type	Clashes	Symm-Clashes
4	A	703	UMP	1	0
4	B	704	UMP	1	0
2	A	701	NDP	1	0
2	B	701	NDP	2	0
5	A	704	GOL	2	0

The following is a two-dimensional graphical depiction of Mogul quality analysis of bond lengths, bond angles, torsion angles, and ring geometry for all instances of the Ligand of Interest. In addition, ligands with molecular weight > 250 and outliers as shown on the validation Tables will also be included. For torsion angles, if less than 5% of the Mogul distribution of torsion angles is within 10 degrees of the torsion angle in question, then that torsion angle is considered an outlier. Any bond that is central to one or more torsion angles identified as an outlier by Mogul will be highlighted in the graph. For rings, the root-mean-square deviation (RMSD) between the ring in question and similar rings identified by Mogul is calculated over all ring torsion angles. If the average RMSD is greater than 60 degrees and the minimal RMSD between the ring in question and any Mogul-identified rings is also greater than 60 degrees, then that ring is considered an outlier. The outliers are highlighted in purple. The color gray indicates Mogul did not find sufficient equivalents in the CSD to analyse the geometry.







5.7 Other polymers [\(i\)](#)

There are no such residues in this entry.

5.8 Polymer linkage issues

There are no chain breaks in this entry.

6 Fit of model and data [i](#)

6.1 Protein, DNA and RNA chains [i](#)

In the following table, the column labelled ‘#RSRZ > 2’ contains the number (and percentage) of RSRZ outliers, followed by percent RSRZ outliers for the chain as percentile scores relative to all X-ray entries and entries of similar resolution. The OWAB column contains the minimum, median, 95th percentile and maximum values of the occupancy-weighted average B-factor per residue. The column labelled ‘Q < 0.9’ lists the number of (and percentage) of residues with an average occupancy less than 0.9.

Mol	Chain	Analysed	<RSRZ>	#RSRZ>2	OWAB(Å ²)	Q<0.9
1	A	523/608 (86%)	0.14	27 (5%) 34 31	15, 32, 75, 125	0
1	B	520/608 (85%)	0.53	65 (12%) 9 8	15, 39, 91, 121	0
All	All	1043/1216 (85%)	0.33	92 (8%) 17 16	15, 35, 87, 125	0

The worst 5 of 92 RSRZ outliers are listed below:

Mol	Chain	Res	Type	RSRZ
1	A	309	PRO	6.5
1	B	131	LEU	6.0
1	B	309	PRO	5.0
1	B	81	LEU	4.5
1	B	144	ASN	4.2

6.2 Non-standard residues in protein, DNA, RNA chains [i](#)

There are no non-standard protein/DNA/RNA residues in this entry.

6.3 Carbohydrates [i](#)

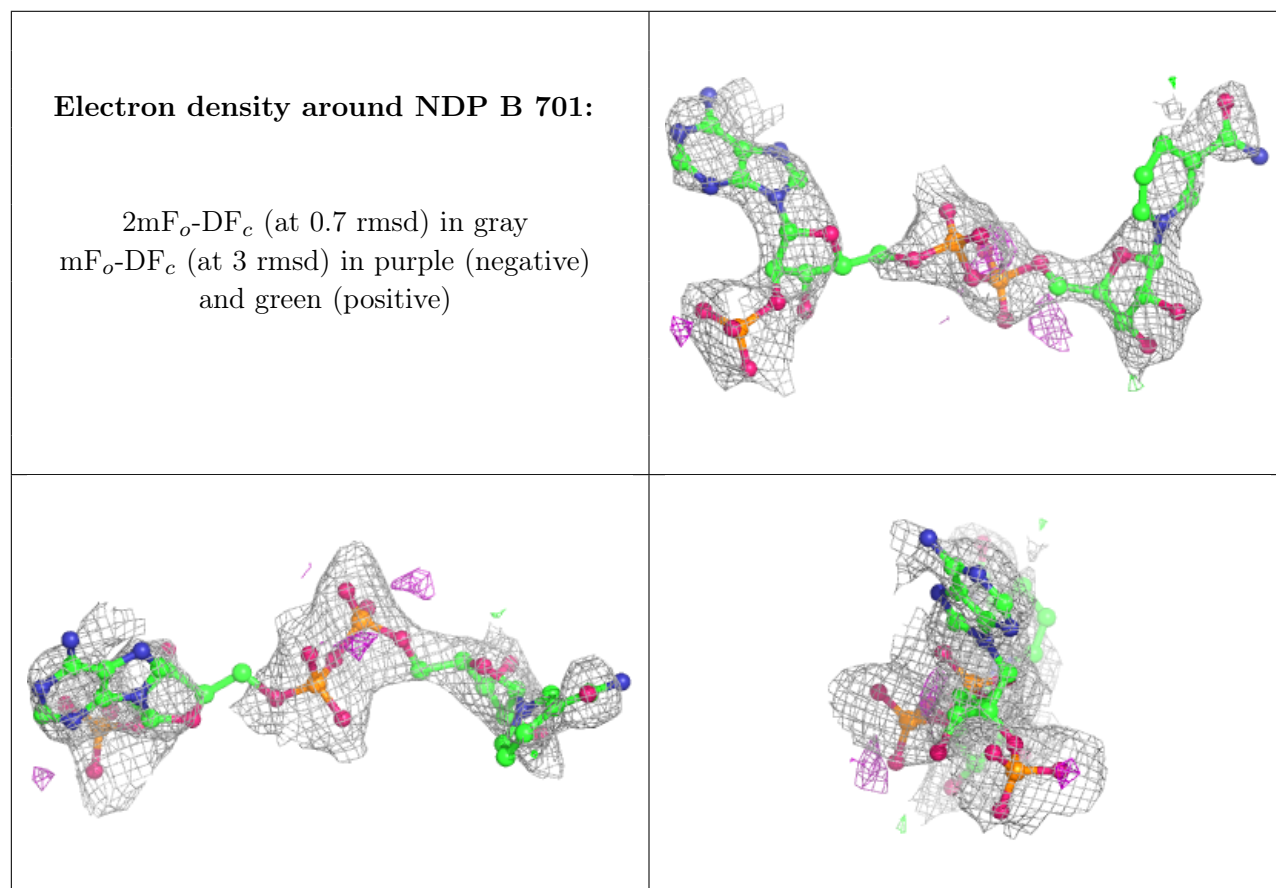
There are no monosaccharides in this entry.

6.4 Ligands [i](#)

In the following table, the Atoms column lists the number of modelled atoms in the group and the number defined in the chemical component dictionary. The B-factors column lists the minimum, median, 95th percentile and maximum values of B factors of atoms in the group. The column labelled ‘Q < 0.9’ lists the number of atoms with occupancy less than 0.9.

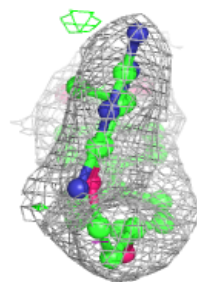
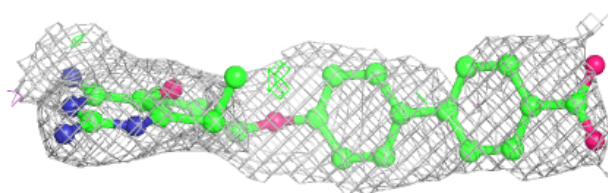
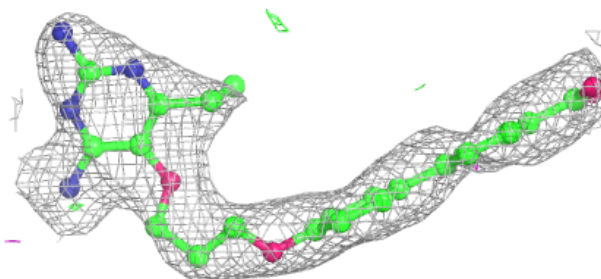
Mol	Type	Chain	Res	Atoms	RSCC	RSR	B-factors(\AA^2)	Q<0.9
2	NDP	B	701	48/48	0.80	0.16	54,86,100,102	0
5	GOL	B	703	6/6	0.81	0.15	35,40,41,44	0
5	GOL	A	704	6/6	0.82	0.18	37,44,45,47	0
3	A1LZT	B	702	30/30	0.82	0.14	45,57,85,91	0
4	UMP	B	704	20/20	0.83	0.20	46,81,113,119	0
4	UMP	A	703	20/20	0.84	0.19	50,72,94,95	0
3	A1LZT	A	702	30/30	0.95	0.07	21,30,52,55	0
2	NDP	A	701	48/48	0.95	0.08	28,37,48,54	0

The following is a graphical depiction of the model fit to experimental electron density of all instances of the Ligand of Interest. In addition, ligands with molecular weight > 250 and outliers as shown on the geometry validation Tables will also be included. Each fit is shown from different orientation to approximate a three-dimensional view.

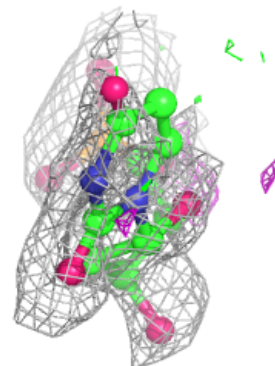
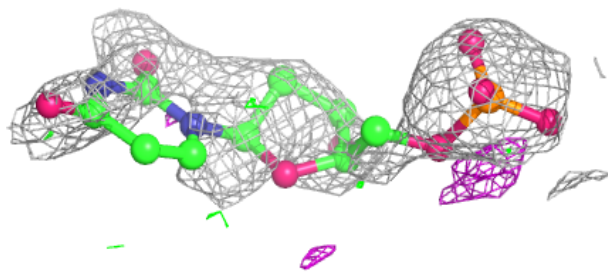
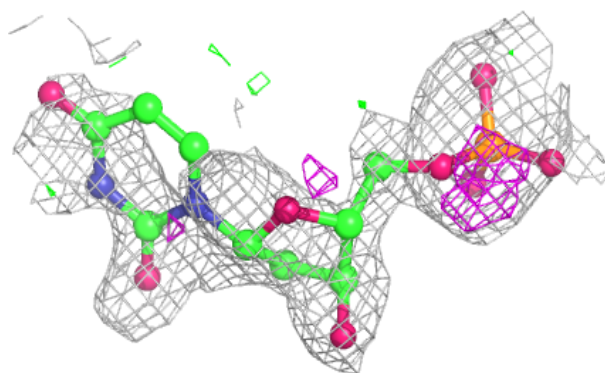


Electron density around A1LZT B 702:

$2mF_o-DF_c$ (at 0.7 rmsd) in gray
 mF_o-DF_c (at 3 rmsd) in purple (negative)
and green (positive)

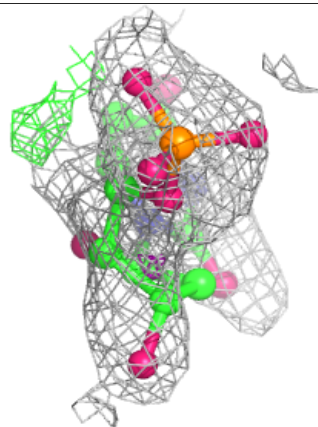
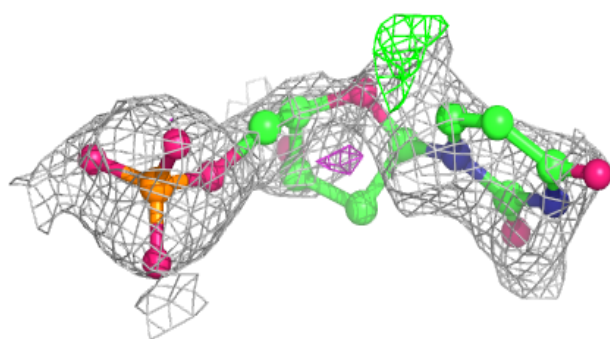
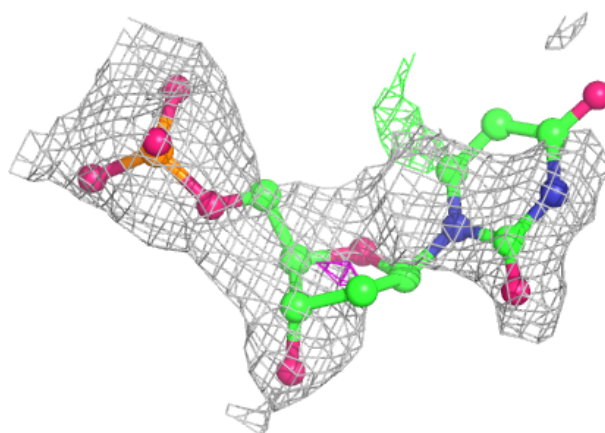
**Electron density around UMP B 704:**

$2mF_o-DF_c$ (at 0.7 rmsd) in gray
 mF_o-DF_c (at 3 rmsd) in purple (negative)
and green (positive)

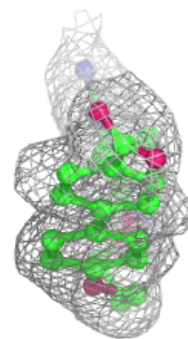
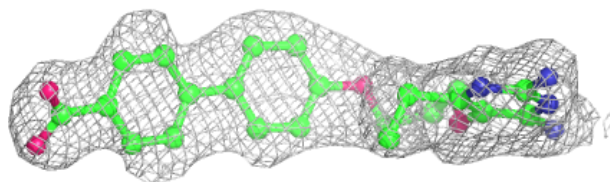
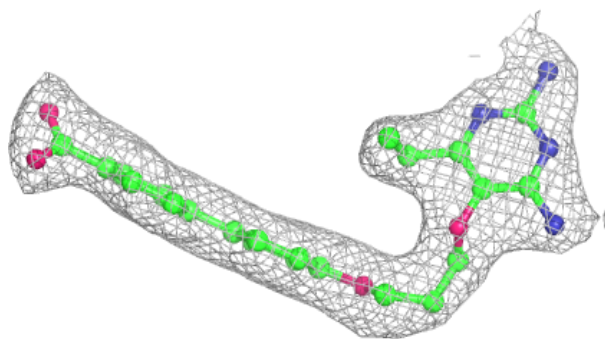


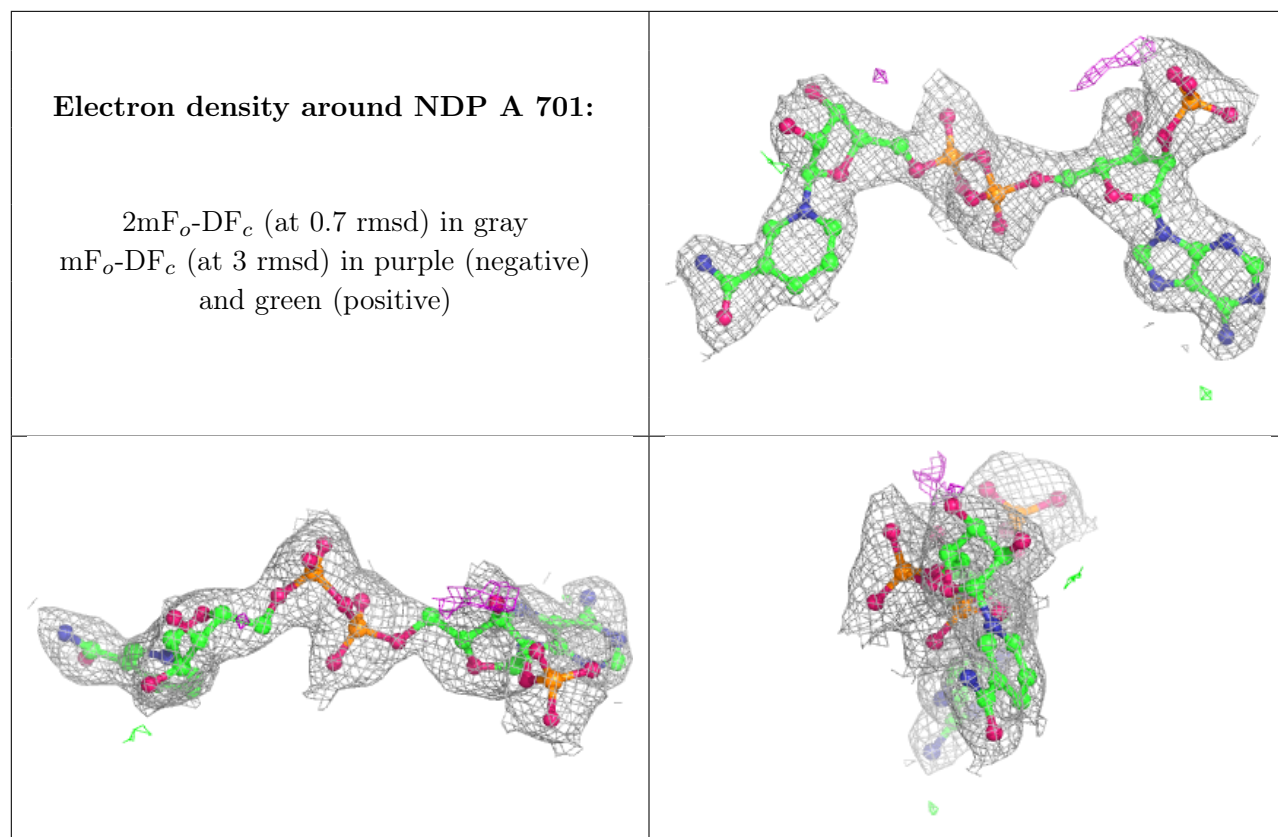
Electron density around UMP A 703:

$2mF_o-DF_c$ (at 0.7 rmsd) in gray
 mF_o-DF_c (at 3 rmsd) in purple (negative)
and green (positive)

**Electron density around A1LZT A 702:**

$2mF_o-DF_c$ (at 0.7 rmsd) in gray
 mF_o-DF_c (at 3 rmsd) in purple (negative)
and green (positive)





6.5 Other polymers [i](#)

There are no such residues in this entry.