



Full wwPDB EM Validation Report ⓘ

Nov 6, 2023 – 04:16 PM JST

PDB ID : 7YTP
EMDB ID : EMD-34091
Title : TLR7 in complex with an inhibitor
Authors : Zhang, Z.; Ohto, U.; Shimizu, T.
Deposited on : 2022-08-15
Resolution : 2.77 Å (reported)

This is a Full wwPDB EM Validation Report for a publicly released PDB entry.

We welcome your comments at validation@mail.wwpdb.org

A user guide is available at

<https://www.wwpdb.org/validation/2017/EMValidationReportHelp>

with specific help available everywhere you see the ⓘ symbol.

The types of validation reports are described at

<http://www.wwpdb.org/validation/2017/FAQs#types>.

The following versions of software and data (see [references ⓘ](#)) were used in the production of this report:

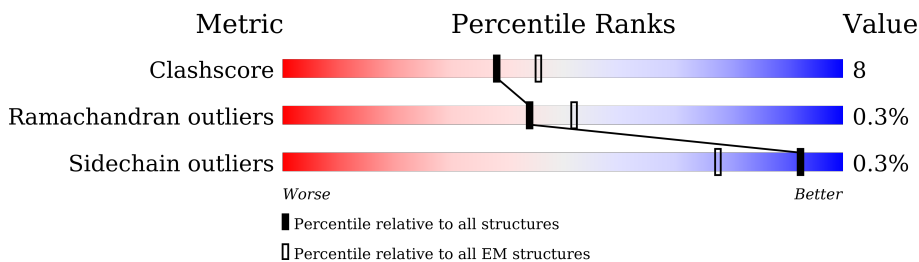
EMDB validation analysis : 0.0.1.dev70
Mogul : 1.8.5 (274361), CSD as541be (2020)
MolProbity : 4.02b-467
buster-report : 1.1.7 (2018)
Percentile statistics : 20191225.v01 (using entries in the PDB archive December 25th 2019)
MapQ : 1.9.9
Ideal geometry (proteins) : Engh & Huber (2001)
Ideal geometry (DNA, RNA) : Parkinson et al. (1996)
Validation Pipeline (wwPDB-VP) : 2.36

1 Overall quality at a glance

The following experimental techniques were used to determine the structure:
ELECTRON MICROSCOPY

The reported resolution of this entry is 2.77 Å.

Percentile scores (ranging between 0-100) for global validation metrics of the entry are shown in the following graphic. The table shows the number of entries on which the scores are based.



Metric	Whole archive (#Entries)	EM structures (#Entries)
Clashscore	158937	4297
Ramachandran outliers	154571	4023
Sidechain outliers	154315	3826

The table below summarises the geometric issues observed across the polymeric chains and their fit to the map. The red, orange, yellow and green segments of the bar indicate the fraction of residues that contain outliers for ≥ 3 , 2, 1 and 0 types of geometric quality criteria respectively. A grey segment represents the fraction of residues that are not modelled. The numeric value for each fraction is indicated below the corresponding segment, with a dot representing fractions $\leq 5\%$. The upper red bar (where present) indicates the fraction of residues that have poor fit to the EM map (all-atom inclusion $< 40\%$). The numeric value is given above the bar.

Mol	Chain	Length	Quality of chain
1	A	975	
1	B	975	
2	C	2	
2	D	2	
2	E	2	
2	F	2	
2	G	2	
2	H	2	

2 Entry composition i

There are 4 unique types of molecules in this entry. The entry contains 12178 atoms, of which 0 are hydrogens and 0 are deuteriums.

In the tables below, the AltConf column contains the number of residues with at least one atom in alternate conformation and the Trace column contains the number of residues modelled with at most 2 atoms.

- Molecule 1 is a protein called Toll-like receptor 7.

Mol	Chain	Residues	Atoms					AltConf	Trace
			Total	C	N	O	S		
1	A	731	5907	3783	1006	1092	26	0	0
1	B	731	5907	3783	1006	1092	26	0	0

There are 64 discrepancies between the modelled and reference sequences:

Chain	Residue	Modelled	Actual	Comment	Reference
A	5	MET	-	initiating methionine	UNP B3Y653
A	6	LYS	-	expression tag	UNP B3Y653
A	7	LEU	-	expression tag	UNP B3Y653
A	8	CYS	-	expression tag	UNP B3Y653
A	9	ILE	-	expression tag	UNP B3Y653
A	10	LEU	-	expression tag	UNP B3Y653
A	11	LEU	-	expression tag	UNP B3Y653
A	12	ALA	-	expression tag	UNP B3Y653
A	13	VAL	-	expression tag	UNP B3Y653
A	14	VAL	-	expression tag	UNP B3Y653
A	15	ALA	-	expression tag	UNP B3Y653
A	16	PHE	-	expression tag	UNP B3Y653
A	17	VAL	-	expression tag	UNP B3Y653
A	18	GLY	-	expression tag	UNP B3Y653
A	19	LEU	-	expression tag	UNP B3Y653
A	20	SER	-	expression tag	UNP B3Y653
A	21	LEU	-	expression tag	UNP B3Y653
A	22	GLY	-	expression tag	UNP B3Y653
A	23	ARG	-	expression tag	UNP B3Y653
A	24	SER	-	expression tag	UNP B3Y653
A	25	PRO	-	expression tag	UNP B3Y653
A	26	TRP	-	expression tag	UNP B3Y653
A	167	GLN	ASN	engineered mutation	UNP B3Y653
A	389	GLN	ASN	engineered mutation	UNP B3Y653
A	440	LEU	SER	engineered mutation	UNP B3Y653
A	441	VAL	GLU	engineered mutation	UNP B3Y653

Continued on next page...

Continued from previous page...

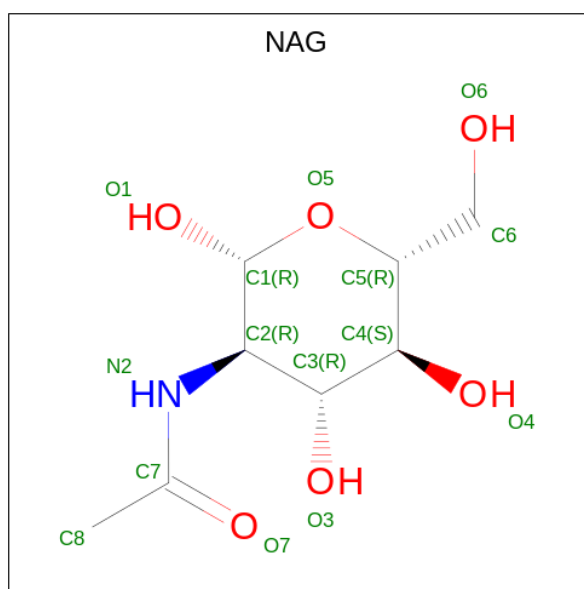
Chain	Residue	Modelled	Actual	Comment	Reference
A	442	PRO	VAL	engineered mutation	UNP B3Y653
A	443	ARG	GLY	engineered mutation	UNP B3Y653
A	444	GLY	PHE	engineered mutation	UNP B3Y653
A	445	SER	CYS	engineered mutation	UNP B3Y653
A	488	GLN	ASN	engineered mutation	UNP B3Y653
A	799	GLN	ASN	engineered mutation	UNP B3Y653
B	5	MET	-	initiating methionine	UNP B3Y653
B	6	LYS	-	expression tag	UNP B3Y653
B	7	LEU	-	expression tag	UNP B3Y653
B	8	CYS	-	expression tag	UNP B3Y653
B	9	ILE	-	expression tag	UNP B3Y653
B	10	LEU	-	expression tag	UNP B3Y653
B	11	LEU	-	expression tag	UNP B3Y653
B	12	ALA	-	expression tag	UNP B3Y653
B	13	VAL	-	expression tag	UNP B3Y653
B	14	VAL	-	expression tag	UNP B3Y653
B	15	ALA	-	expression tag	UNP B3Y653
B	16	PHE	-	expression tag	UNP B3Y653
B	17	VAL	-	expression tag	UNP B3Y653
B	18	GLY	-	expression tag	UNP B3Y653
B	19	LEU	-	expression tag	UNP B3Y653
B	20	SER	-	expression tag	UNP B3Y653
B	21	LEU	-	expression tag	UNP B3Y653
B	22	GLY	-	expression tag	UNP B3Y653
B	23	ARG	-	expression tag	UNP B3Y653
B	24	SER	-	expression tag	UNP B3Y653
B	25	PRO	-	expression tag	UNP B3Y653
B	26	TRP	-	expression tag	UNP B3Y653
B	167	GLN	ASN	engineered mutation	UNP B3Y653
B	389	GLN	ASN	engineered mutation	UNP B3Y653
B	440	LEU	SER	engineered mutation	UNP B3Y653
B	441	VAL	GLU	engineered mutation	UNP B3Y653
B	442	PRO	VAL	engineered mutation	UNP B3Y653
B	443	ARG	GLY	engineered mutation	UNP B3Y653
B	444	GLY	PHE	engineered mutation	UNP B3Y653
B	445	SER	CYS	engineered mutation	UNP B3Y653
B	488	GLN	ASN	engineered mutation	UNP B3Y653
B	799	GLN	ASN	engineered mutation	UNP B3Y653

- Molecule 2 is an oligosaccharide called 2-acetamido-2-deoxy-beta-D-glucopyranose-(1-4)-2-acetamido-2-deoxy-beta-D-glucopyranose.



Mol	Chain	Residues	Atoms				AltConf	Trace
			Total	C	N	O		
2	C	2	Total 28	C 16	N 2	O 10	0	0
2	D	2	Total 28	C 16	N 2	O 10	0	0
2	E	2	Total 28	C 16	N 2	O 10	0	0
2	F	2	Total 28	C 16	N 2	O 10	0	0
2	G	2	Total 28	C 16	N 2	O 10	0	0
2	H	2	Total 28	C 16	N 2	O 10	0	0

- Molecule 3 is 2-acetamido-2-deoxy-beta-D-glucopyranose (three-letter code: NAG) (formula: $C_8H_{15}NO_6$).



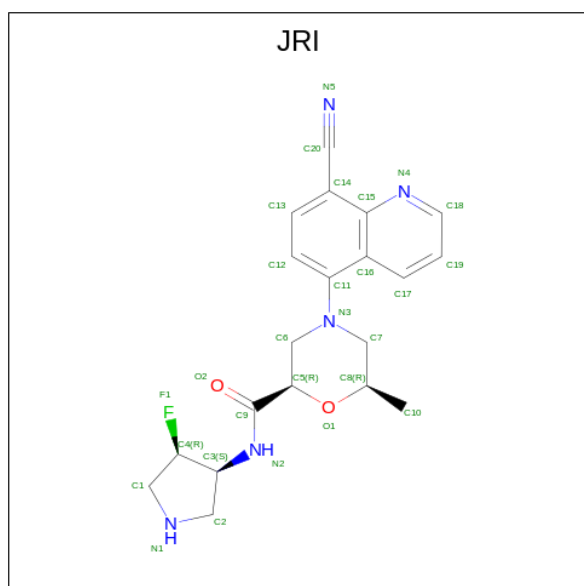
Mol	Chain	Residues	Atoms				AltConf
			Total	C	N	O	
3	A	1	Total 14	C 8	N 1	O 5	0
3	A	1	Total 14	C 8	N 1	O 5	0
3	A	1	Total 14	C 8	N 1	O 5	0

Continued on next page...

Continued from previous page...

Mol	Chain	Residues	Atoms				AltConf
3	A	1	Total	C	N	O	0
			14	8	1	5	
3	A	1	Total	C	N	O	0
			14	8	1	5	
3	B	1	Total	C	N	O	0
			14	8	1	5	
3	B	1	Total	C	N	O	0
			14	8	1	5	
3	B	1	Total	C	N	O	0
			14	8	1	5	
3	B	1	Total	C	N	O	0
			14	8	1	5	

- Molecule 4 is (2R,6R)-4-(8-cyanoquinolin-5-yl)-N-[(3S,4R)-4-fluoranylpyrrolidin-3-yl]-6-methyl-morpholine-2-carboxamide (three-letter code: JRI) (formula: C₂₀H₂₂FN₅O₂) (labeled as "Ligand of Interest" by depositor).

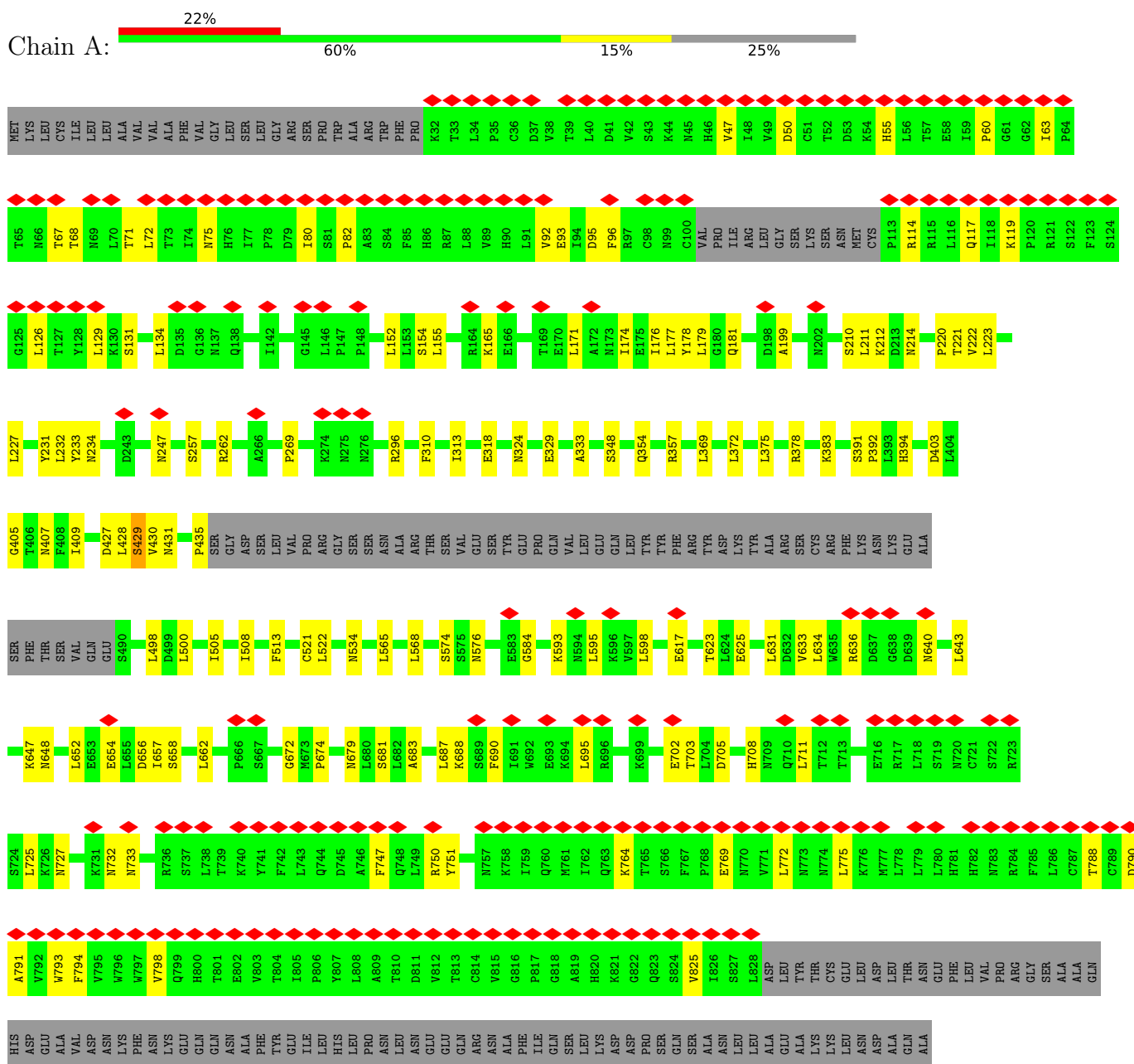


Mol	Chain	Residues	Atoms					AltConf
4	A	1	Total	C	F	N	O	0
			28	20	1	5	2	
4	B	1	Total	C	F	N	O	0
			28	20	1	5	2	

3 Residue-property plots

These plots are drawn for all protein, RNA, DNA and oligosaccharide chains in the entry. The first graphic for a chain summarises the proportions of the various outlier classes displayed in the second graphic. The second graphic shows the sequence view annotated by issues in geometry and atom inclusion in map density. Residues are color-coded according to the number of geometric quality criteria for which they contain at least one outlier: green = 0, yellow = 1, orange = 2 and red = 3 or more. A red diamond above a residue indicates a poor fit to the EM map for this residue (all-atom inclusion < 40%). Stretches of 2 or more consecutive residues without any outlier are shown as a green connector. Residues present in the sample, but not in the model, are shown in grey.

- Molecule 1: Toll-like receptor 7



PRO	LYS	VAL	ALA	ASP	ASN	ASN	LYS	ASN	ASN	ASP	VAL	PRO
VAL	ASP	ALA	ASN	ASN	SER	SER	SER	SER	VAL	PRO		

● Molecule 1: Toll-like receptor 7



MET	LYS	LEU	CYS	ILE	LEU	LEU	ALA	VAL	VAL	VAL	PHE	GLN	ASN	ALA	LEU	PRO	ARG	LEU	LEU	GLY	ARG	SER	PRO	TRP	ALA	ASN	LEU	ASN	GLU	GLN	ARG	GLN	PRO	K32	T33	L34	P35	C36	D37	V38	T39	L40	D41	V42	S43	K44	M45	H46	V47	I48	V49	D50	C51	T52	D53	K54	H55	L56	T57	E58	I59	P60	G61	G62	I63	P64
T85	M66	T87	T88	M69	L70	T71	L72	T73	T74	N75	H76	I77	D79	I80	S81	P82	A83	S84	F85	H86	R87	L88	V89	H90	L91	V92	E93	I94	D95	F96	R97	C98	N99	C100	VAL	PRO	ILE	LEU	GLY	SER	LYS	SER	ASN	MET	CYS	P113	R114	R115	L116	Q117	I118	K119	P120	R121	S122	F123	S124									
G125	L126	T127	Y128	L129	L132	Y133	L134	D135	Q138	G145	L146	S149	L150	Q151	L152	L153	S154	S162	I163	R164	K165	E166	Q167	L168	T169	E170	L171	A172	M173	I174	E175	L176	L177	Y178	L179	G180	Q181	Y193	E196	K197	D198	A199	F200	L201	N202	L203	T204	K205	V208	K212																
D213	N214	T221	V222	L223	T228	E229	V233	N234	E239	D243	N247	L248	N249	Q250	L251	Q252	L253	D255	E257	R262	P269	C270	T271	K274	M275	N276	T290	E291	V294	I313	N314	N315	E318	N324	E329	A333	L339	Q354																												
L369	L372	L375	R376	L377	L385	Q389	L390	S391	P392	L393	V401	L402	D403	F408	V425	I426	L428	V430	M431	P435	SER	GLY	ASP	SER	LEU	VAL	PRO	ARG	GLY	SER	ASN	ALA	THR	SER	VAL	F549	L554	L565	L568	E569	V570	S574	N575																							
TYR	PHE	ARG	TYR	ASP	LYS	TYR	ALA	ARG	LYS	ASN	LYS	GLU	ALA	SER	THR	VAL	GLN	GLU	S490	L498	N503	S504	I505	I508	F513	K520	C521	L522	L524	N534	R545	Y546	F549	L554	L565	L568	E569	V570	S574	N575																										
E583	G584	K593	N594	L595	K596	V597	L598	Q599	K600	E617	T623	L624	E625	F626	L631	D632	V633	L634	M635	R636	D637	D638	D639	N640	N648	L652	D656	I657	S658	L662	S663	F664	L665	P666	S667	G668	D671	P674	S681	L682	A683	K688	S689	F690	I691	M692	E693																			
K694	L695	R696	K699	T703	L704	D705	L706	N709	Q710	L711	T712	T713	E716	R717	L718	S719	N720	C721	S722	R723	S724	L725	K726	N727	L728	L730	K731	N732	N733	Q734	L735	R736	S737	L738	T739	K740	Y741	F742	L743	Q744	D745	A746	F747	Q748	L749	R750	Y751	L752	D753	L754	S755	S756	N757	K758												
I759	Q760	M761	I762	Q763	K764	I765	S766	F767	F768	E769	N770	V771	L772	M773	N774	L775	K776	M777	L778	L779	L780	H781	H782	N783	R784	F785	L786	C787	T788	D790	A791	V792	M793	F794	V795	M796	W797	V798	Q799	H800	T801	E802	V803	T804	I805	P806	Y807	L808	A809	T810	D811	V812	T813	C814	V815	G816	P817	G818								
A819	H820	K821	Q822	Q823	S824	N825	L826	S827	L828	ASP	LEU	TYR	THR	CYS	GLU	LEU	ASP	LEU	VAL	ARG	PRO	GLY	ASN	ALA	ALA	PRO	LYS	ALA	GLN	ASP	ASN	GLY	ASP	ASP	VAL	LYS	ASN	GLN	GLY	ASP	TYR	ILE	ASP	ILE	ASN	HIS	LEU	PRO	ASN	ASN	GLU															
GLU	GLN	ARG	ASN	ALA	ILE	GLN	SER	LEU	SER	PRO	ASP	ASP	PRO	GLN	SER	LEU	LEU	LEU	VAL	ASP	PRO	ALA	ALA	GLN	PRO	VAL	PRO	LYS	ALA	ASP	ASN	GLY	ASP	ASP	VAL	LYS	ASN	GLN	GLY	ASP	TYR	ILE	ASP	ILE	ASN	HIS	LEU	PRO	ASN	ASN	GLU															
ARG	ASN	ALA	PHE	ILE	GLN	SER	LEU	LEU	ASP	PRO	ASP	PRO	GLN	SER	LEU	LEU	LEU	LEU	VAL	ASP	PRO	ALA	ALA	GLN	PRO	VAL	PRO	LYS	ALA	ASP	ASN	GLY	ASP	ASP	VAL	LYS	ASN	GLN	GLY	ASP	TYR	ILE	ASP	ILE	ASN	HIS	LEU	PRO	ASN	ASN	GLU															

- Molecule 2: 2-acetamido-2-deoxy-beta-D-glucopyranose-(1-4)-2-acetamido-2-deoxy-beta-D-glucopyranose



- Molecule 2: 2-acetamido-2-deoxy-beta-D-glucopyranose-(1-4)-2-acetamido-2-deoxy-beta-D-glucopyranose



- Molecule 2: 2-acetamido-2-deoxy-beta-D-glucopyranose-(1-4)-2-acetamido-2-deoxy-beta-D-glucopyranose



- Molecule 2: 2-acetamido-2-deoxy-beta-D-glucopyranose-(1-4)-2-acetamido-2-deoxy-beta-D-glucopyranose



- Molecule 2: 2-acetamido-2-deoxy-beta-D-glucopyranose-(1-4)-2-acetamido-2-deoxy-beta-D-glucopyranose



- Molecule 2: 2-acetamido-2-deoxy-beta-D-glucopyranose-(1-4)-2-acetamido-2-deoxy-beta-D-glucopyranose





4 Experimental information

Property	Value	Source
EM reconstruction method	SINGLE PARTICLE	Depositor
Imposed symmetry	POINT, Not provided	
Number of particles used	91789	Depositor
Resolution determination method	FSC 0.143 CUT-OFF	Depositor
CTF correction method	NONE	Depositor
Microscope	TFS KRIOS	Depositor
Voltage (kV)	300	Depositor
Electron dose ($e^-/\text{\AA}^2$)	61.1	Depositor
Minimum defocus (nm)	1000	Depositor
Maximum defocus (nm)	2200	Depositor
Magnification	Not provided	
Image detector	GATAN K3 BIOQUANTUM (6k x 4k)	Depositor
Maximum map value	0.402	Depositor
Minimum map value	-0.270	Depositor
Average map value	0.000	Depositor
Map value standard deviation	0.017	Depositor
Recommended contour level	0.06	Depositor
Map size (\AA)	199.2, 199.2, 199.2	wwPDB
Map dimensions	160, 160, 160	wwPDB
Map angles ($^\circ$)	90.0, 90.0, 90.0	wwPDB
Pixel spacing (\AA)	1.245, 1.245, 1.245	Depositor

5 Model quality [i](#)

5.1 Standard geometry [i](#)

Bond lengths and bond angles in the following residue types are not validated in this section: JRI, NAG

The Z score for a bond length (or angle) is the number of standard deviations the observed value is removed from the expected value. A bond length (or angle) with $|Z| > 5$ is considered an outlier worth inspection. RMSZ is the root-mean-square of all Z scores of the bond lengths (or angles).

Mol	Chain	Bond lengths		Bond angles	
		RMSZ	# Z >5	RMSZ	# Z >5
1	A	0.24	0/6027	0.47	0/8166
1	B	0.24	0/6027	0.48	0/8166
All	All	0.24	0/12054	0.47	0/16332

There are no bond length outliers.

There are no bond angle outliers.

There are no chirality outliers.

There are no planarity outliers.

5.2 Too-close contacts [i](#)

In the following table, the Non-H and H(model) columns list the number of non-hydrogen atoms and hydrogen atoms in the chain respectively. The H(added) column lists the number of hydrogen atoms added and optimized by MolProbity. The Clashes column lists the number of clashes within the asymmetric unit, whereas Symm-Clashes lists symmetry-related clashes.

Mol	Chain	Non-H	H(model)	H(added)	Clashes	Symm-Clashes
1	A	5907	0	5974	90	0
1	B	5907	0	5975	103	0
2	C	28	0	25	0	0
2	D	28	0	25	0	0
2	E	28	0	25	0	0
2	F	28	0	25	0	0
2	G	28	0	25	0	0
2	H	28	0	25	1	0
3	A	70	0	65	4	0
3	B	70	0	65	4	0
4	A	28	0	0	1	0

Continued on next page...

Continued from previous page...

Mol	Chain	Non-H	H(model)	H(added)	Clashes	Symm-Clashes
4	B	28	0	0	2	0
All	All	12178	0	12229	195	0

The all-atom clashscore is defined as the number of clashes found per 1000 atoms (including hydrogen atoms). The all-atom clashscore for this structure is 8.

All (195) close contacts within the same asymmetric unit are listed below, sorted by their clash magnitude.

Atom-1	Atom-2	Interatomic distance (Å)	Clash overlap (Å)
1:A:727:ASN:HA	1:A:751:TYR:HB3	1.67	0.77
1:B:429:SER:O	1:B:431:ASN:N	2.20	0.75
1:B:711:LEU:HB2	1:B:733:ASN:HD21	1.52	0.73
1:A:47:VAL:HB	1:A:67:THR:HA	1.73	0.71
1:B:354:GLN:OE1	4:B:1006:JRI:N5	2.25	0.70
1:A:593:LYS:HB3	3:A:1002:NAG:H81	1.74	0.69
1:A:429:SER:O	1:A:431:ASN:N	2.26	0.69
1:B:593:LYS:HB3	3:B:1002:NAG:H81	1.75	0.69
1:A:711:LEU:HB2	1:A:733:ASN:HD21	1.58	0.67
1:A:72:LEU:N	1:A:95:ASP:O	2.24	0.66
1:B:369:LEU:HB3	1:B:372:LEU:HB2	1.77	0.66
1:A:625:GLU:HA	1:A:656:ASP:HB3	1.77	0.66
1:A:798:VAL:HG11	1:A:825:VAL:HG22	1.78	0.65
1:B:726:LYS:HA	1:B:749:LEU:HA	1.76	0.65
1:B:401:VAL:HG23	1:B:425:VAL:HB	1.79	0.64
1:B:47:VAL:HB	1:B:67:THR:HA	1.79	0.64
1:B:703:THR:HA	1:B:727:ASN:HB2	1.80	0.63
1:B:60:PRO:HG2	1:B:63:ILE:HD11	1.82	0.62
1:A:60:PRO:HG2	1:A:63:ILE:HD11	1.81	0.61
1:A:234:ASN:N	1:A:257:SER:O	2.29	0.61
1:A:584:GLY:HA3	1:B:269:PRO:HG3	1.82	0.61
3:A:1005:NAG:H3	3:A:1005:NAG:H83	1.81	0.61
1:B:727:ASN:HA	1:B:751:TYR:HB3	1.82	0.61
1:A:354:GLN:HG2	4:A:1006:JRI:N5	2.14	0.61
1:B:625:GLU:HA	1:B:656:ASP:HB3	1.80	0.61
1:A:681:SER:HA	1:A:705:ASP:HB3	1.83	0.60
3:B:1005:NAG:H83	3:B:1005:NAG:H3	1.83	0.60
1:A:623:THR:HA	1:A:654:GLU:HB3	1.84	0.59
1:A:574:SER:O	1:A:576:ASN:ND2	2.36	0.59
1:B:228:THR:HA	1:B:251:LEU:HA	1.86	0.58
1:B:798:VAL:HG11	1:B:825:VAL:HG22	1.85	0.58
1:B:435:PRO:HD3	1:B:505:ILE:HA	1.84	0.58

Continued on next page...

Continued from previous page...

Atom-1	Atom-2	Interatomic distance (Å)	Clash overlap (Å)
1:B:549:PHE:HE2	1:B:554:LEU:HB2	1.67	0.58
1:A:369:LEU:HB3	1:A:372:LEU:HB2	1.86	0.58
1:A:652:LEU:HD23	1:A:674:PRO:HG3	1.86	0.58
1:B:73:THR:O	1:B:75:ASN:ND2	2.37	0.57
1:B:50:ASP:HA	1:B:71:THR:HB	1.85	0.57
1:A:647:LYS:HE3	1:A:672:GLY:HA2	1.86	0.57
1:B:71:THR:HA	1:B:95:ASP:HB3	1.87	0.57
3:A:1001:NAG:H83	3:A:1001:NAG:H3	1.87	0.57
1:B:48:ILE:HG23	1:B:69:ASN:HB2	1.86	0.57
1:A:117:GLN:HE22	1:A:119:LYS:HD2	1.70	0.57
1:A:428:LEU:HD12	1:A:498:LEU:HD11	1.86	0.57
1:B:565:LEU:HD13	1:B:568:LEU:HD13	1.87	0.56
1:A:565:LEU:HD13	1:A:568:LEU:HD13	1.86	0.56
1:B:428:LEU:HD12	1:B:498:LEU:HD11	1.87	0.56
1:B:403:ASP:HA	1:B:427:ASP:HB3	1.87	0.56
1:A:405:GLY:HA2	1:A:431:ASN:HD21	1.71	0.56
1:A:702:GLU:HA	1:A:725:LEU:HA	1.87	0.56
3:B:1001:NAG:H83	3:B:1001:NAG:H3	1.88	0.55
1:B:652:LEU:HD23	1:B:674:PRO:HG3	1.86	0.55
1:B:223:LEU:O	1:B:247:ASN:ND2	2.31	0.55
1:B:154:SER:HA	1:B:178:TYR:HB2	1.88	0.55
1:B:690:PHE:HB3	1:B:711:LEU:HD21	1.90	0.54
1:B:565:LEU:HB3	1:B:568:LEU:HB2	1.90	0.53
1:A:211:LEU:HB2	1:A:232:LEU:HD23	1.91	0.52
1:A:565:LEU:HB3	1:A:568:LEU:HB2	1.91	0.52
1:A:71:THR:HA	1:A:95:ASP:HB3	1.90	0.52
1:A:435:PRO:HD3	1:A:505:ILE:HA	1.91	0.52
1:B:617:GLU:OE2	1:B:648:ASN:ND2	2.43	0.52
1:A:679:ASN:HB2	3:A:1005:NAG:N2	2.25	0.52
1:A:223:LEU:O	1:A:247:ASN:ND2	2.24	0.52
1:A:687:LEU:HD21	1:A:690:PHE:HB2	1.92	0.51
1:B:508:ILE:HG23	1:B:513:PHE:HE2	1.76	0.51
1:B:729:ILE:HA	1:B:753:ASP:HB3	1.91	0.51
1:A:68:THR:HB	1:A:92:VAL:HG22	1.93	0.51
1:B:546:TYR:HD1	1:B:570:VAL:HB	1.74	0.51
1:A:296:ARG:NH1	1:A:318:GLU:OE2	2.44	0.50
1:A:791:ALA:HB1	1:A:794:PHE:HB3	1.94	0.50
1:B:570:VAL:HG13	1:B:600:LYS:HB3	1.93	0.50
1:B:681:SER:HA	1:B:705:ASP:HB3	1.94	0.50
1:A:310:PHE:CD2	1:A:313:ILE:HD11	2.47	0.50
1:B:96:PHE:HB3	1:B:134:LEU:HD23	1.93	0.50

Continued on next page...

Continued from previous page...

Atom-1	Atom-2	Interatomic distance (Å)	Clash overlap (Å)
1:B:262:ARG:NH1	1:B:324:ASN:O	2.45	0.50
1:A:313:ILE:HG13	1:A:313:ILE:O	2.12	0.49
1:A:50:ASP:HA	1:A:71:THR:HB	1.93	0.49
1:B:791:ALA:HB1	1:B:794:PHE:HB3	1.94	0.49
1:B:294:VAL:HG22	1:B:318:GLU:HB3	1.94	0.49
1:B:126:LEU:HB3	1:B:129:LEU:HB2	1.93	0.49
1:B:657:ILE:HG13	1:B:657:ILE:O	2.12	0.49
1:A:165:LYS:HG2	1:A:199:ALA:HA	1.94	0.49
1:A:747:PHE:O	1:A:750:ARG:NH1	2.45	0.49
1:B:179:LEU:O	1:B:214:ASN:ND2	2.37	0.48
1:A:329:GLU:O	1:A:333:ALA:N	2.45	0.48
1:A:617:GLU:OE2	1:A:648:ASN:ND2	2.46	0.48
1:B:55:HIS:N	1:B:75:ASN:OD1	2.46	0.48
1:A:154:SER:HA	1:A:178:TYR:HB2	1.95	0.48
1:B:725:LEU:HD21	1:B:728:LEU:HG	1.94	0.48
1:B:354:GLN:HG2	4:B:1006:JRI:N5	2.28	0.48
1:A:772:LEU:HD13	1:A:775:LEU:HD22	1.94	0.48
1:B:48:ILE:HD13	2:H:1:NAG:H82	1.95	0.48
1:A:500:LEU:HD12	1:A:522:LEU:HD11	1.96	0.48
1:B:164:ARG:H	1:B:167:GLN:HE21	1.62	0.48
1:A:690:PHE:HZ	1:A:695:LEU:HD21	1.78	0.48
1:A:262:ARG:NH1	1:A:324:ASN:O	2.47	0.47
1:B:574:SER:O	1:B:576:ASN:ND2	2.46	0.47
1:A:508:ILE:HG23	1:A:513:PHE:HE2	1.79	0.47
1:A:640:ASN:HA	1:A:643:LEU:HG	1.96	0.47
1:B:390:LEU:HD22	1:B:393:LEU:HD12	1.96	0.47
1:A:55:HIS:N	1:A:75:ASN:OD1	2.45	0.47
1:A:80:ILE:HD11	1:A:96:PHE:CZ	2.49	0.47
1:B:197:LYS:NZ	1:B:221:THR:OG1	2.45	0.47
1:B:329:GLU:O	1:B:333:ALA:N	2.46	0.47
1:B:520:LYS:HD2	1:B:545:ARG:HD3	1.96	0.47
1:B:600:LYS:HG3	1:B:623:THR:HB	1.97	0.47
1:A:134:LEU:HB2	1:A:155:LEU:HD23	1.97	0.47
1:B:626:PHE:HB3	1:B:657:ILE:HG22	1.96	0.47
1:B:208:VAL:HG22	1:B:229:GLU:HB2	1.97	0.46
1:A:595:LEU:HB3	1:A:598:LEU:HB2	1.98	0.46
1:A:708:HIS:NE2	1:A:732:ASN:OD1	2.48	0.46
1:B:408:PHE:N	1:B:431:ASN:OD1	2.48	0.46
1:A:403:ASP:HA	1:A:427:ASP:HB3	1.97	0.46
1:A:407:ASN:N	1:A:431:ASN:OD1	2.31	0.46
1:B:253:ILE:HG12	1:B:294:VAL:HB	1.98	0.46

Continued on next page...

Continued from previous page...

Atom-1	Atom-2	Interatomic distance (Å)	Clash overlap (Å)
1:A:703:THR:HA	1:A:727:ASN:HB2	1.98	0.46
1:B:181:GLN:HG3	1:B:212:LYS:HE3	1.97	0.46
1:B:631:LEU:HD23	1:B:634:LEU:HD12	1.96	0.46
1:B:665:LEU:HD11	1:B:682:LEU:HD21	1.98	0.46
1:B:98:CYS:N	1:B:135:ASP:O	2.36	0.46
1:A:171:LEU:HD22	1:A:174:ILE:HD13	1.98	0.46
1:A:181:GLN:HG3	1:A:212:LYS:HE3	1.96	0.46
1:B:595:LEU:HD13	1:B:598:LEU:HD22	1.97	0.46
1:A:788:THR:OG1	1:A:790:ASP:OD1	2.33	0.45
1:B:69:ASN:HA	1:B:93:GLU:HB3	1.98	0.45
1:B:658:SER:HB2	1:B:683:ALA:O	2.16	0.45
1:B:788:THR:OG1	1:B:790:ASP:OD1	2.34	0.45
1:B:595:LEU:HB3	1:B:598:LEU:HB2	1.98	0.45
1:A:703:THR:HG23	1:A:727:ASN:HB2	1.99	0.45
1:B:521:CYS:SG	1:B:522:LEU:N	2.89	0.45
1:B:570:VAL:HG22	1:B:600:LYS:HB3	1.98	0.45
1:B:385:LEU:HA	1:B:389:GLN:HE22	1.82	0.45
1:A:631:LEU:HB2	1:A:662:LEU:HD21	1.99	0.45
1:B:429:SER:C	1:B:431:ASN:H	2.19	0.45
1:B:772:LEU:HD13	1:B:775:LEU:HD22	1.99	0.45
1:A:521:CYS:SG	1:A:522:LEU:N	2.91	0.44
1:B:83:ALA:HA	1:B:86:HIS:HB2	1.99	0.44
1:B:129:LEU:HD21	1:B:132:LEU:HD12	1.98	0.44
1:B:375:LEU:HD21	1:B:377:ILE:HD11	2.00	0.44
1:A:221:THR:HA	1:A:222:VAL:HA	1.70	0.44
1:A:631:LEU:HD23	1:A:634:LEU:HD12	1.99	0.44
1:B:706:LEU:C	1:B:709:ASN:HD22	2.21	0.44
1:A:223:LEU:HB3	1:A:227:LEU:HD12	2.00	0.44
1:A:429:SER:C	1:A:431:ASN:H	2.21	0.44
1:A:633:VAL:HG22	1:A:636:ARG:HH21	1.83	0.44
1:A:210:SER:HA	1:A:231:TYR:HB2	1.99	0.43
1:B:151:GLN:HG3	1:B:175:GLU:HG3	2.00	0.43
1:B:221:THR:HA	1:B:222:VAL:HA	1.65	0.43
1:B:290:THR:OG1	1:B:291:GLU:OE1	2.22	0.43
1:B:632:ASP:OD1	1:B:633:VAL:N	2.50	0.43
1:A:409:ILE:H	1:A:431:ASN:HB3	1.82	0.43
1:A:688:LYS:HD3	1:A:688:LYS:HA	1.84	0.43
1:A:657:ILE:O	1:A:657:ILE:HG13	2.19	0.43
1:B:177:LEU:HG	1:B:179:LEU:HG	2.00	0.43
1:B:234:ASN:N	1:B:257:SER:O	2.33	0.43
1:A:372:LEU:HD21	1:A:375:LEU:HB2	1.99	0.43

Continued on next page...

Continued from previous page...

Atom-1	Atom-2	Interatomic distance (Å)	Clash overlap (Å)
1:A:82:PRO:HD3	1:A:119:LYS:HB2	2.00	0.43
1:B:633:VAL:HG12	1:B:636:ARG:HH21	1.84	0.43
1:A:179:LEU:O	1:A:214:ASN:ND2	2.40	0.43
1:A:702:GLU:O	1:A:727:ASN:N	2.52	0.43
1:B:711:LEU:HB2	1:B:733:ASN:ND2	2.29	0.43
1:B:85:PHE:HB3	1:B:126:LEU:HD21	2.01	0.43
1:A:769:GLU:HA	1:A:772:LEU:HB2	2.01	0.42
1:B:764:LYS:HD3	1:B:793:TRP:NE1	2.34	0.42
1:A:764:LYS:HD3	1:A:793:TRP:NE1	2.34	0.42
1:B:570:VAL:HA	1:B:600:LYS:O	2.20	0.42
1:A:357:ARG:O	1:A:383:LYS:N	2.51	0.42
1:A:391:SER:OG	1:A:392:PRO:HD3	2.20	0.42
1:B:151:GLN:HG3	1:B:175:GLU:CG	2.50	0.42
1:A:595:LEU:HD13	1:A:598:LEU:HD22	2.01	0.41
1:B:391:SER:OG	1:B:392:PRO:HD3	2.19	0.41
1:B:764:LYS:HD3	1:B:793:TRP:CE2	2.55	0.41
1:B:291:GLU:OE1	1:B:291:GLU:N	2.53	0.41
1:B:780:LEU:O	1:B:783:ASN:ND2	2.53	0.41
1:A:72:LEU:HD23	1:A:72:LEU:HA	1.95	0.41
1:B:631:LEU:HB2	1:B:662:LEU:HD21	2.02	0.41
1:B:812:VAL:O	1:B:812:VAL:HG13	2.21	0.41
1:B:795:VAL:HG22	1:B:828:LEU:HD13	2.03	0.41
1:B:66:ASN:HB2	3:B:1001:NAG:H2	2.02	0.41
1:A:152:LEU:HD12	1:A:176:ILE:HD12	2.03	0.41
1:A:658:SER:HB2	1:A:683:ALA:O	2.21	0.41
1:B:175:GLU:OE2	1:B:205:LYS:HB3	2.21	0.41
1:B:193:TYR:HB2	1:B:214:ASN:O	2.21	0.41
1:B:369:LEU:HD13	1:B:372:LEU:HD13	2.01	0.41
1:B:431:ASN:O	1:B:503:ASN:HA	2.21	0.41
1:B:688:LYS:HA	1:B:688:LYS:HD3	1.81	0.41
1:A:212:LYS:HD3	1:A:233:TYR:OH	2.20	0.41
1:A:126:LEU:HB3	1:A:129:LEU:HB2	2.02	0.40
1:A:177:LEU:HG	1:A:179:LEU:HG	2.03	0.40
1:A:220:PRO:HG2	1:A:223:LEU:HD21	2.03	0.40
1:A:269:PRO:HG3	1:B:584:GLY:HA3	2.02	0.40
1:A:348:SER:HA	1:A:378:ARG:O	2.22	0.40
1:B:796:TRP:O	1:B:800:HIS:HB2	2.22	0.40
1:A:93:GLU:OE1	1:A:131:SER:OG	2.18	0.40
1:A:391:SER:HA	1:A:394:HIS:ND1	2.37	0.40
1:B:212:LYS:HD3	1:B:233:TYR:OH	2.21	0.40

There are no symmetry-related clashes.

5.3 Torsion angles [i](#)

5.3.1 Protein backbone [i](#)

In the following table, the Percentiles column shows the percent Ramachandran outliers of the chain as a percentile score with respect to all PDB entries followed by that with respect to all EM entries.

The Analysed column shows the number of residues for which the backbone conformation was analysed, and the total number of residues.

Mol	Chain	Analysed	Favoured	Allowed	Outliers	Percentiles	
1	A	725/975 (74%)	689 (95%)	34 (5%)	2 (0%)	41	70
1	B	725/975 (74%)	688 (95%)	35 (5%)	2 (0%)	41	70
All	All	1450/1950 (74%)	1377 (95%)	69 (5%)	4 (0%)	44	70

All (4) Ramachandran outliers are listed below:

Mol	Chain	Res	Type
1	B	430	VAL
1	A	430	VAL
1	B	429	SER
1	A	429	SER

5.3.2 Protein sidechains [i](#)

In the following table, the Percentiles column shows the percent sidechain outliers of the chain as a percentile score with respect to all PDB entries followed by that with respect to all EM entries.

The Analysed column shows the number of residues for which the sidechain conformation was analysed, and the total number of residues.

Mol	Chain	Analysed	Rotameric	Outliers	Percentiles	
1	A	689/903 (76%)	687 (100%)	2 (0%)	92	97
1	B	689/903 (76%)	687 (100%)	2 (0%)	92	97
All	All	1378/1806 (76%)	1374 (100%)	4 (0%)	92	97

All (4) residues with a non-rotameric sidechain are listed below:

Mol	Chain	Res	Type
1	A	114	ARG
1	A	534	ASN

Continued on next page...

Continued from previous page...

Mol	Chain	Res	Type
1	B	114	ARG
1	B	534	ASN

Sometimes sidechains can be flipped to improve hydrogen bonding and reduce clashes. All (4) such sidechains are listed below:

Mol	Chain	Res	Type
1	B	167	GLN
1	B	337	HIS
1	B	389	GLN
1	B	709	ASN

5.3.3 RNA [i](#)

There are no RNA molecules in this entry.

5.4 Non-standard residues in protein, DNA, RNA chains [i](#)

There are no non-standard protein/DNA/RNA residues in this entry.

5.5 Carbohydrates [i](#)

12 monosaccharides are modelled in this entry.

In the following table, the Counts columns list the number of bonds (or angles) for which Mogul statistics could be retrieved, the number of bonds (or angles) that are observed in the model and the number of bonds (or angles) that are defined in the Chemical Component Dictionary. The Link column lists molecule types, if any, to which the group is linked. The Z score for a bond length (or angle) is the number of standard deviations the observed value is removed from the expected value. A bond length (or angle) with $|Z| > 2$ is considered an outlier worth inspection. RMSZ is the root-mean-square of all Z scores of the bond lengths (or angles).

Mol	Type	Chain	Res	Link	Bond lengths			Bond angles		
					Counts	RMSZ	$\# Z > 2$	Counts	RMSZ	$\# Z > 2$
2	NAG	C	1	1,2	14,14,15	0.24	0	17,19,21	0.43	0
2	NAG	C	2	2	14,14,15	0.21	0	17,19,21	0.44	0
2	NAG	D	1	1,2	14,14,15	0.25	0	17,19,21	0.45	0
2	NAG	D	2	2	14,14,15	0.25	0	17,19,21	0.42	0
2	NAG	E	1	1,2	14,14,15	0.32	0	17,19,21	0.52	0
2	NAG	E	2	2	14,14,15	0.14	0	17,19,21	0.51	0
2	NAG	F	1	1,2	14,14,15	0.23	0	17,19,21	0.47	0

Mol	Type	Chain	Res	Link	Bond lengths			Bond angles		
					Counts	RMSZ	# Z > 2	Counts	RMSZ	# Z > 2
2	NAG	F	2	2	14,14,15	0.23	0	17,19,21	0.45	0
2	NAG	G	1	1,2	14,14,15	0.23	0	17,19,21	0.47	0
2	NAG	G	2	2	14,14,15	0.23	0	17,19,21	0.44	0
2	NAG	H	1	1,2	14,14,15	0.18	0	17,19,21	0.42	0
2	NAG	H	2	2	14,14,15	0.23	0	17,19,21	0.44	0

In the following table, the Chirals column lists the number of chiral outliers, the number of chiral centers analysed, the number of these observed in the model and the number defined in the Chemical Component Dictionary. Similar counts are reported in the Torsion and Rings columns. '-' means no outliers of that kind were identified.

Mol	Type	Chain	Res	Link	Chirals	Torsions	Rings
2	NAG	C	1	1,2	-	0/6/23/26	0/1/1/1
2	NAG	C	2	2	-	0/6/23/26	0/1/1/1
2	NAG	D	1	1,2	-	0/6/23/26	0/1/1/1
2	NAG	D	2	2	-	0/6/23/26	0/1/1/1
2	NAG	E	1	1,2	-	0/6/23/26	0/1/1/1
2	NAG	E	2	2	-	0/6/23/26	0/1/1/1
2	NAG	F	1	1,2	-	0/6/23/26	0/1/1/1
2	NAG	F	2	2	-	0/6/23/26	0/1/1/1
2	NAG	G	1	1,2	-	0/6/23/26	0/1/1/1
2	NAG	G	2	2	-	0/6/23/26	0/1/1/1
2	NAG	H	1	1,2	-	0/6/23/26	0/1/1/1
2	NAG	H	2	2	-	0/6/23/26	0/1/1/1

There are no bond length outliers.

There are no bond angle outliers.

There are no chirality outliers.

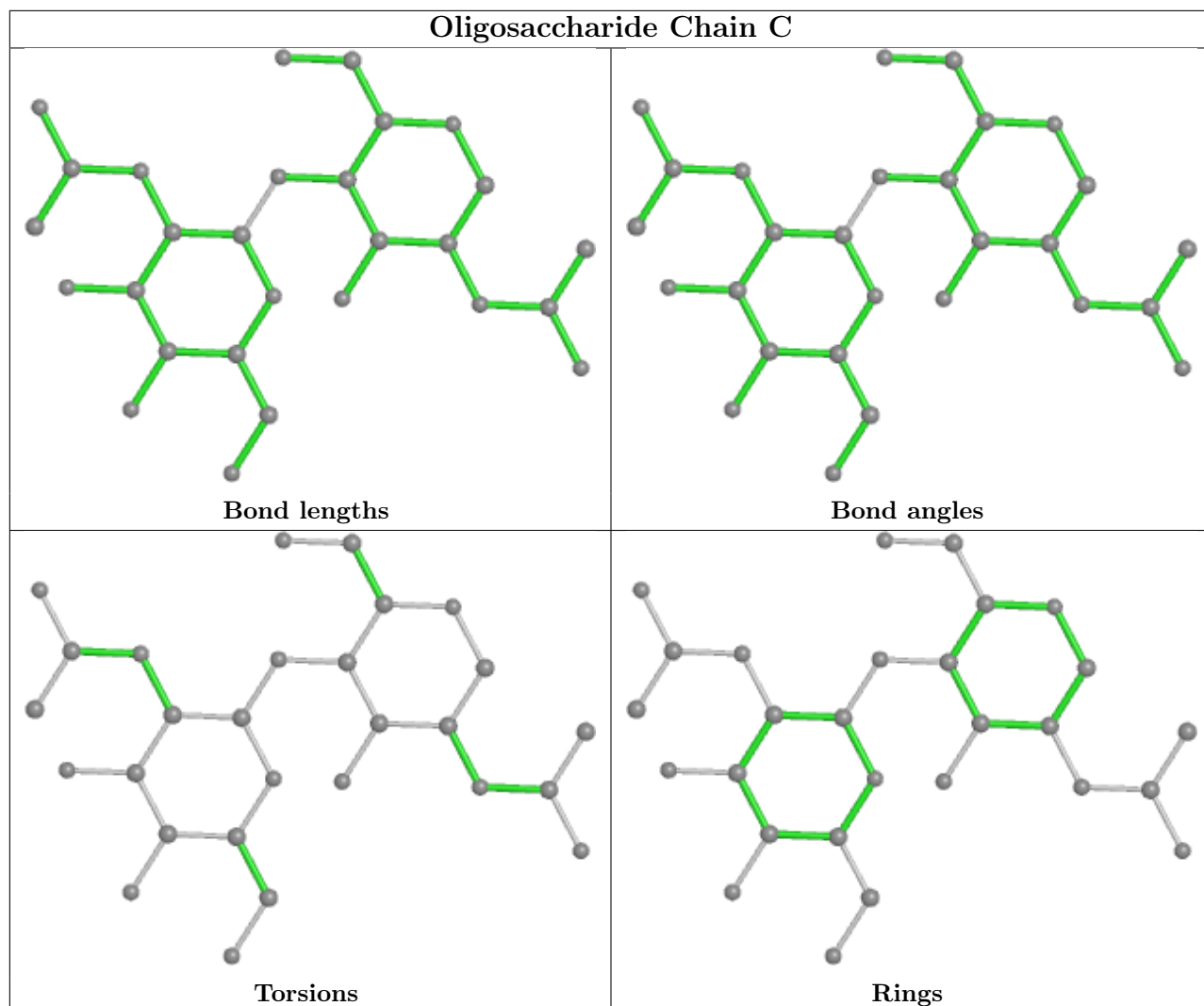
There are no torsion outliers.

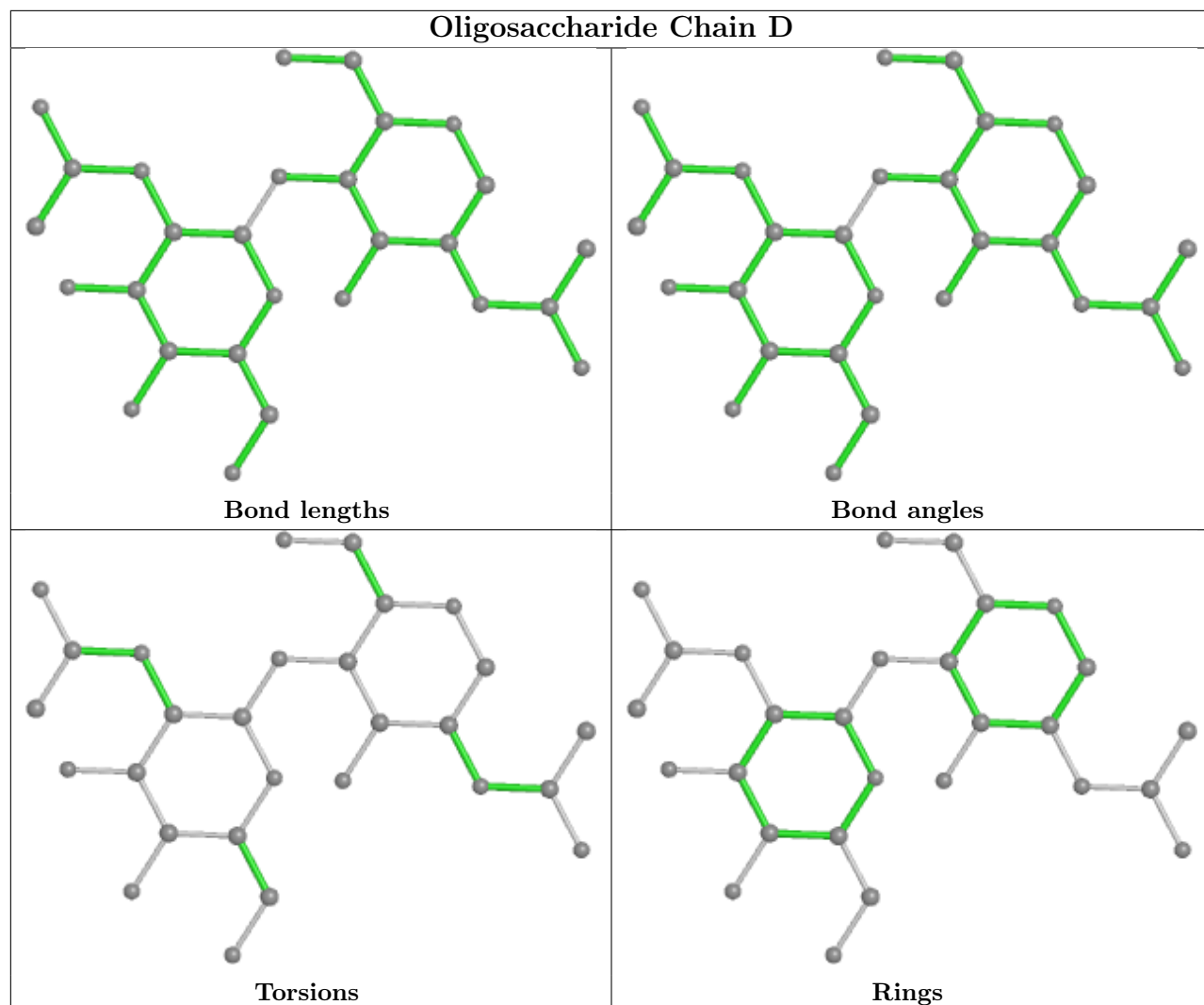
There are no ring outliers.

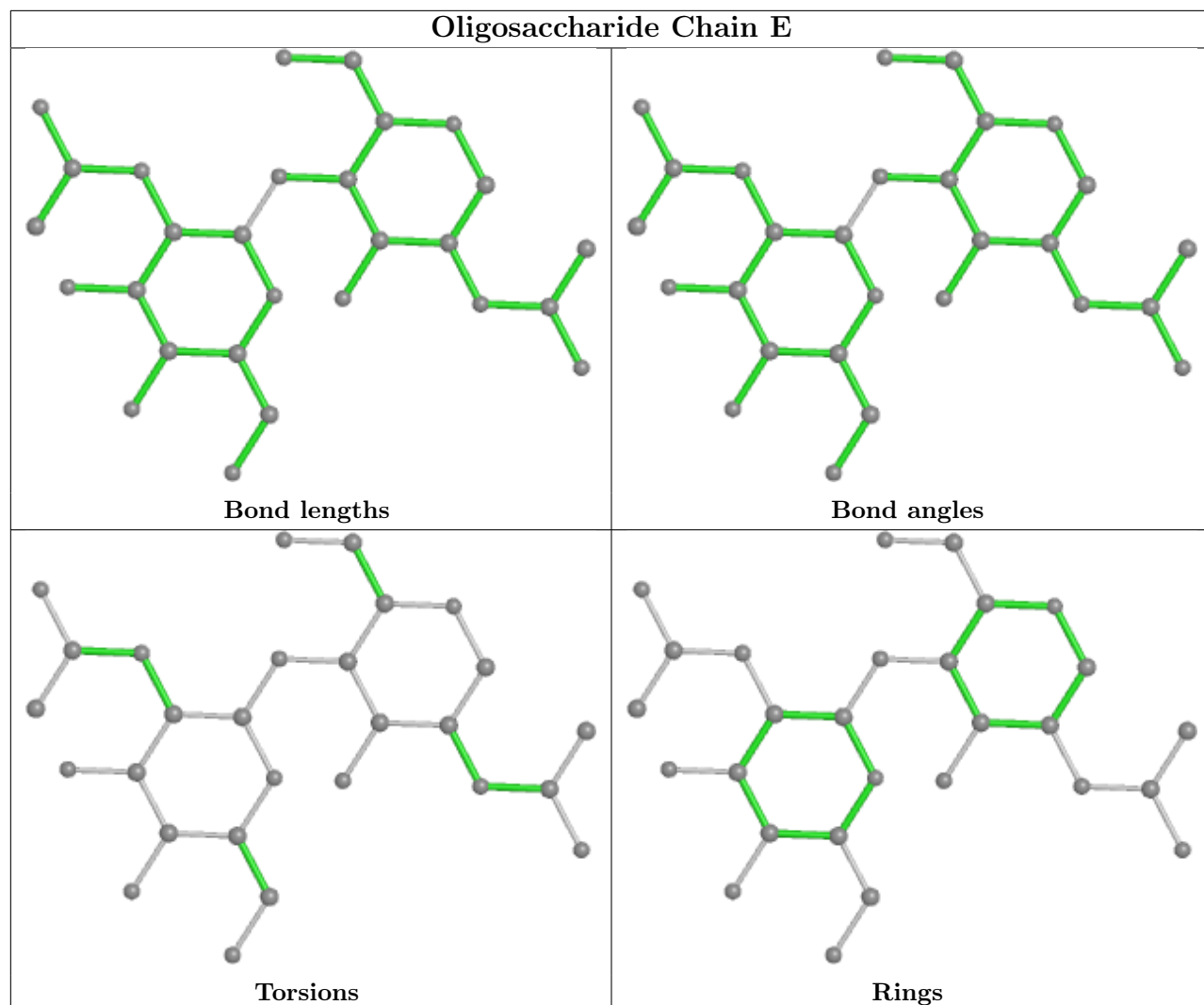
1 monomer is involved in 1 short contact:

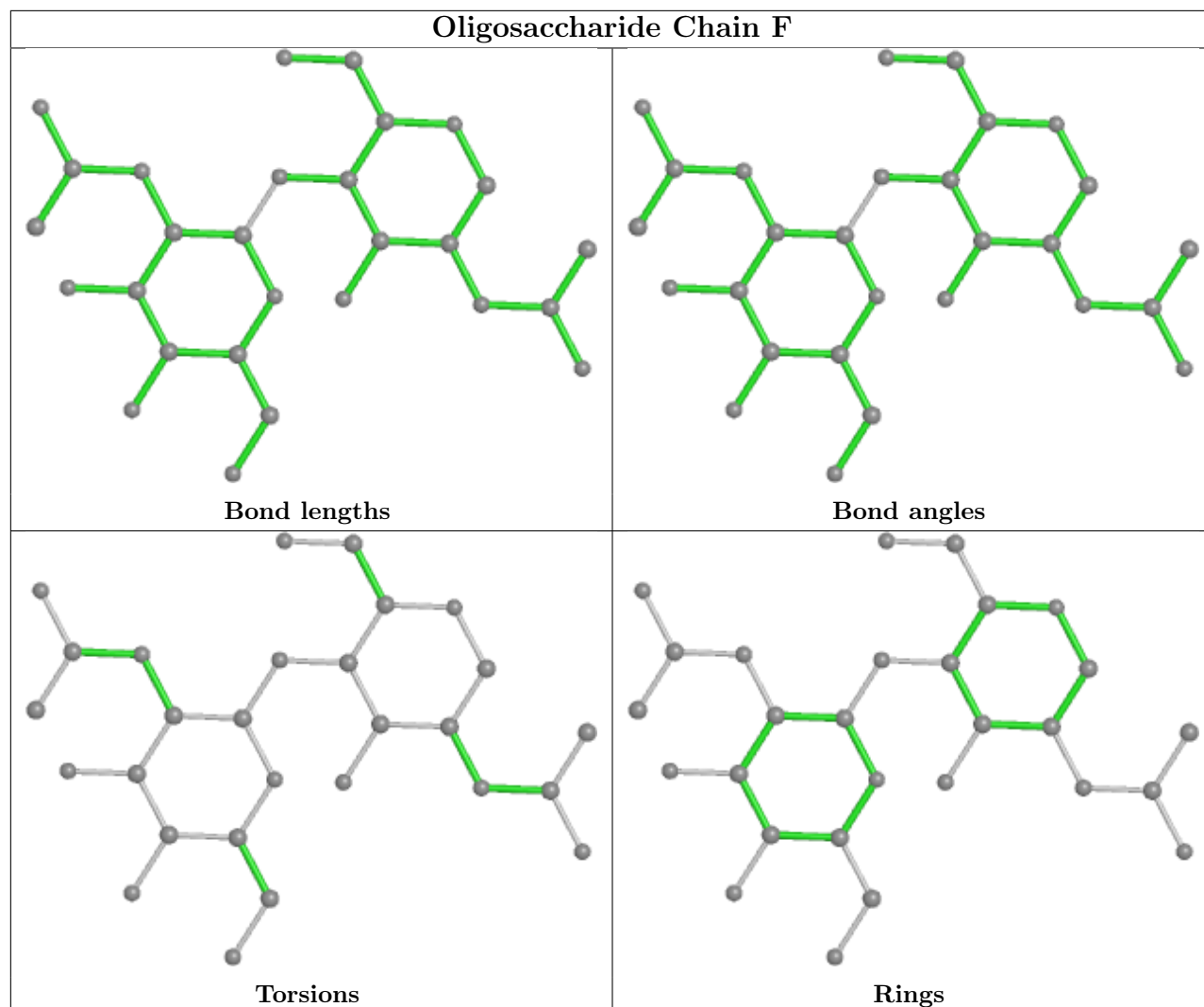
Mol	Chain	Res	Type	Clashes	Symm-Clashes
2	H	1	NAG	1	0

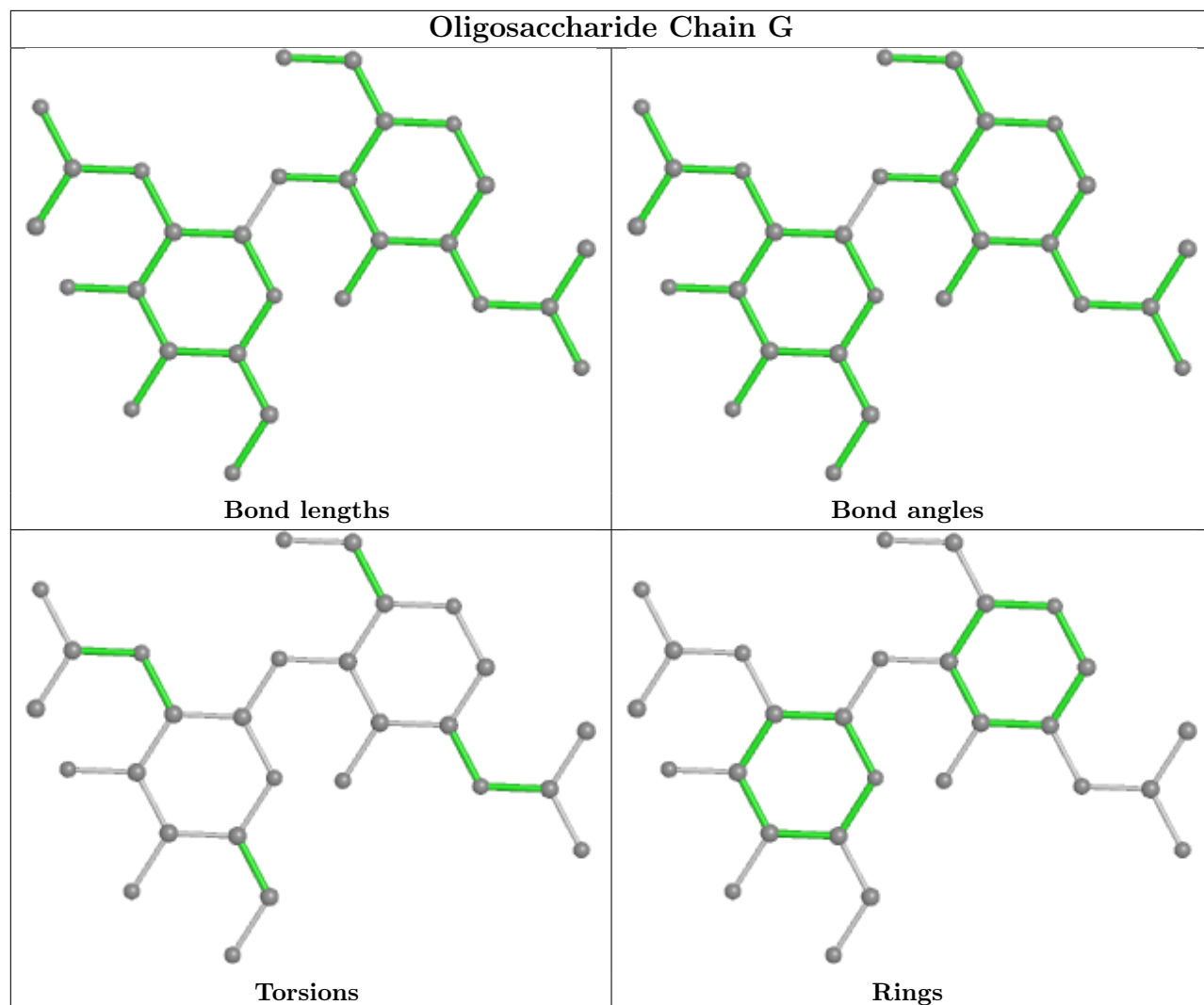
The following is a two-dimensional graphical depiction of Mogul quality analysis of bond lengths, bond angles, torsion angles, and ring geometry for oligosaccharide.

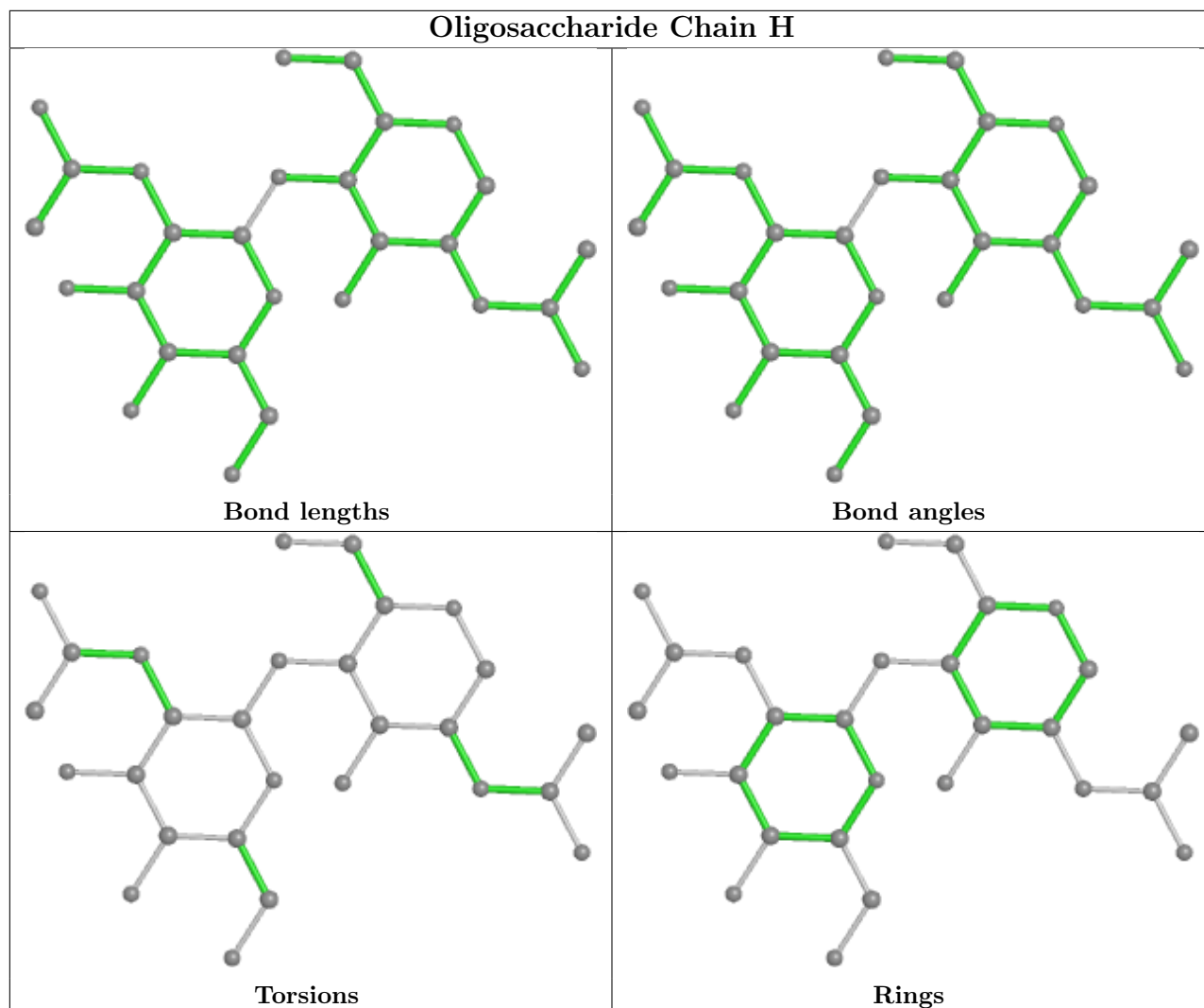












5.6 Ligand geometry [i](#)

12 ligands are modelled in this entry.

In the following table, the Counts columns list the number of bonds (or angles) for which Mogul statistics could be retrieved, the number of bonds (or angles) that are observed in the model and the number of bonds (or angles) that are defined in the Chemical Component Dictionary. The Link column lists molecule types, if any, to which the group is linked. The Z score for a bond length (or angle) is the number of standard deviations the observed value is removed from the expected value. A bond length (or angle) with $|Z| > 2$ is considered an outlier worth inspection. RMSZ is the root-mean-square of all Z scores of the bond lengths (or angles).

Mol	Type	Chain	Res	Link	Bond lengths			Bond angles		
					Counts	RMSZ	$\# Z > 2$	Counts	RMSZ	$\# Z > 2$
3	NAG	B	1001	1	14,14,15	0.55	0	17,19,21	1.26	2 (11%)
3	NAG	A	1004	1	14,14,15	0.27	0	17,19,21	0.42	0
3	NAG	B	1003	1	14,14,15	0.23	0	17,19,21	0.43	0

Mol	Type	Chain	Res	Link	Bond lengths			Bond angles		
					Counts	RMSZ	# Z > 2	Counts	RMSZ	# Z > 2
3	NAG	B	1005	1	14,14,15	0.55	0	17,19,21	1.25	1 (5%)
4	JRI	A	1006	-	29,31,31	0.43	0	33,44,44	0.70	0
4	JRI	B	1006	-	29,31,31	0.44	0	33,44,44	0.70	0
3	NAG	B	1002	1	14,14,15	0.28	0	17,19,21	0.46	0
3	NAG	A	1002	1	14,14,15	0.28	0	17,19,21	0.47	0
3	NAG	A	1005	1	14,14,15	0.96	1 (7%)	17,19,21	1.27	2 (11%)
3	NAG	A	1003	1	14,14,15	0.23	0	17,19,21	0.43	0
3	NAG	A	1001	1	14,14,15	0.54	0	17,19,21	1.25	2 (11%)
3	NAG	B	1004	1	14,14,15	0.24	0	17,19,21	0.45	0

In the following table, the Chirals column lists the number of chiral outliers, the number of chiral centers analysed, the number of these observed in the model and the number defined in the Chemical Component Dictionary. Similar counts are reported in the Torsion and Rings columns. '-' means no outliers of that kind were identified.

Mol	Type	Chain	Res	Link	Chirals	Torsions	Rings
3	NAG	B	1001	1	-	4/6/23/26	0/1/1/1
3	NAG	A	1004	1	-	2/6/23/26	0/1/1/1
3	NAG	B	1003	1	-	2/6/23/26	0/1/1/1
3	NAG	B	1005	1	-	5/6/23/26	0/1/1/1
4	JRI	A	1006	-	-	5/14/36/36	0/4/4/4
4	JRI	B	1006	-	-	4/14/36/36	0/4/4/4
3	NAG	B	1002	1	-	0/6/23/26	0/1/1/1
3	NAG	A	1002	1	-	0/6/23/26	0/1/1/1
3	NAG	A	1005	1	-	5/6/23/26	0/1/1/1
3	NAG	A	1003	1	-	2/6/23/26	0/1/1/1
3	NAG	A	1001	1	-	4/6/23/26	0/1/1/1
3	NAG	B	1004	1	-	2/6/23/26	0/1/1/1

All (1) bond length outliers are listed below:

Mol	Chain	Res	Type	Atoms	Z	Observed(Å)	Ideal(Å)
3	A	1005	NAG	C1-C2	3.03	1.56	1.52

All (7) bond angle outliers are listed below:

Mol	Chain	Res	Type	Atoms	Z	Observed(°)	Ideal(°)
3	B	1001	NAG	C2-N2-C7	4.32	129.06	122.90
3	A	1001	NAG	C2-N2-C7	4.30	129.03	122.90

Continued on next page...

Continued from previous page...

Mol	Chain	Res	Type	Atoms	Z	Observed(°)	Ideal(°)
3	B	1005	NAG	C2-N2-C7	4.19	128.86	122.90
3	A	1005	NAG	C2-N2-C7	4.03	128.64	122.90
3	B	1001	NAG	C1-C2-N2	2.05	113.98	110.49
3	A	1001	NAG	C1-C2-N2	2.04	113.98	110.49
3	A	1005	NAG	C1-O5-C5	2.02	114.93	112.19

There are no chirality outliers.

All (35) torsion outliers are listed below:

Mol	Chain	Res	Type	Atoms
3	A	1005	NAG	O5-C5-C6-O6
3	B	1004	NAG	O5-C5-C6-O6
3	A	1004	NAG	O5-C5-C6-O6
3	A	1005	NAG	C4-C5-C6-O6
3	B	1005	NAG	O5-C5-C6-O6
3	B	1005	NAG	C4-C5-C6-O6
3	B	1004	NAG	C4-C5-C6-O6
3	A	1001	NAG	C8-C7-N2-C2
3	A	1001	NAG	O7-C7-N2-C2
3	A	1005	NAG	C8-C7-N2-C2
3	A	1005	NAG	O7-C7-N2-C2
3	B	1001	NAG	C8-C7-N2-C2
3	B	1001	NAG	O7-C7-N2-C2
3	B	1005	NAG	C8-C7-N2-C2
3	B	1005	NAG	O7-C7-N2-C2
3	A	1004	NAG	C4-C5-C6-O6
4	A	1006	JRI	C2-C3-N2-C9
4	B	1006	JRI	C2-C3-N2-C9
3	B	1001	NAG	O5-C5-C6-O6
3	A	1001	NAG	O5-C5-C6-O6
4	A	1006	JRI	C12-C11-N3-C6
4	A	1006	JRI	C16-C11-N3-C6
4	B	1006	JRI	C12-C11-N3-C6
4	B	1006	JRI	C16-C11-N3-C6
3	A	1003	NAG	C4-C5-C6-O6
4	A	1006	JRI	C4-C3-N2-C9
3	B	1003	NAG	C4-C5-C6-O6
3	A	1003	NAG	O5-C5-C6-O6
4	B	1006	JRI	C4-C3-N2-C9
3	B	1003	NAG	O5-C5-C6-O6
3	A	1001	NAG	C3-C2-N2-C7
3	A	1005	NAG	C3-C2-N2-C7

Continued on next page...

Continued from previous page...

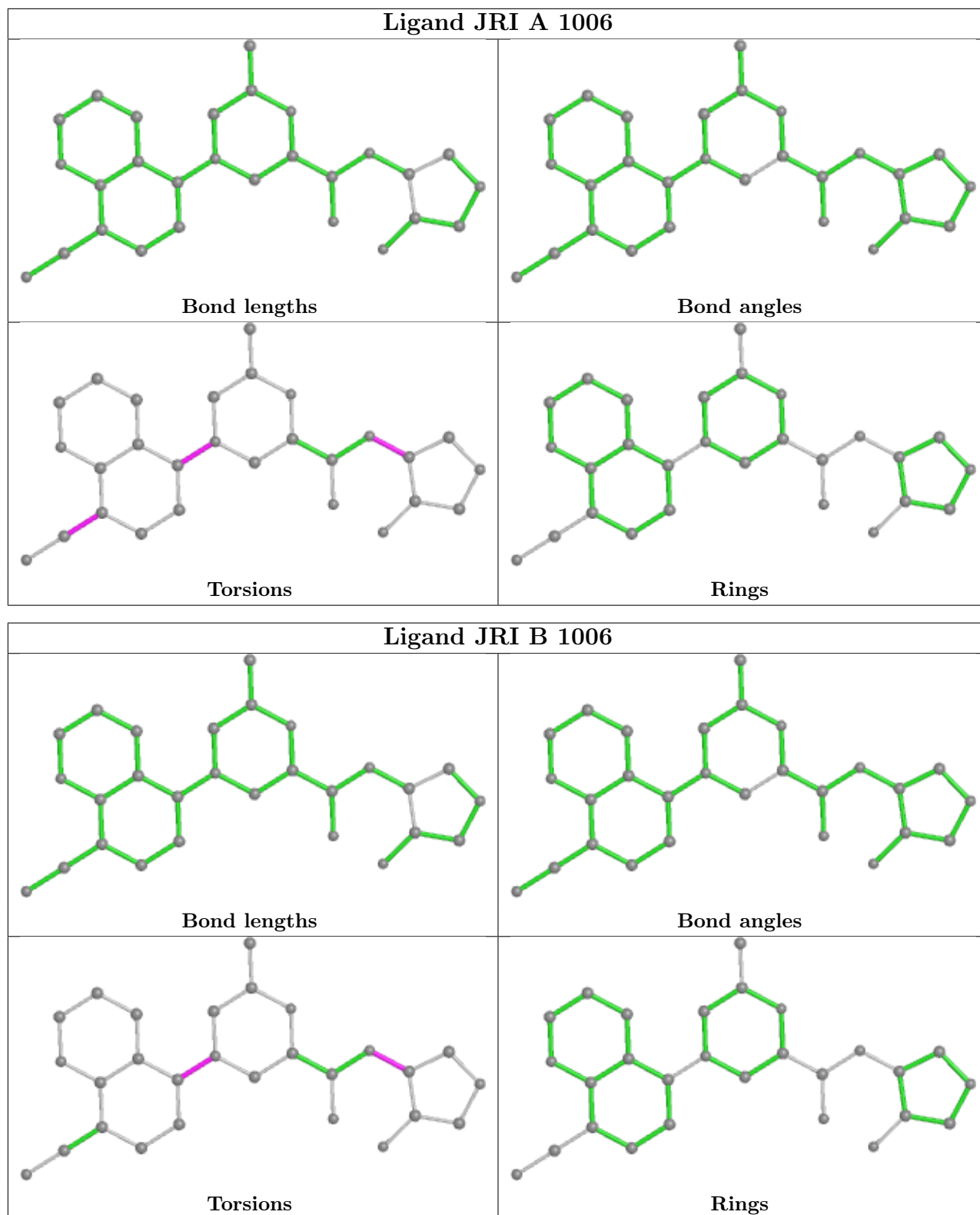
Mol	Chain	Res	Type	Atoms
3	B	1001	NAG	C3-C2-N2-C7
3	B	1005	NAG	C3-C2-N2-C7
4	A	1006	JRI	C15-C14-C20-N5

There are no ring outliers.

8 monomers are involved in 11 short contacts:

Mol	Chain	Res	Type	Clashes	Symm-Clashes
3	B	1001	NAG	2	0
3	B	1005	NAG	1	0
4	A	1006	JRI	1	0
4	B	1006	JRI	2	0
3	B	1002	NAG	1	0
3	A	1002	NAG	1	0
3	A	1005	NAG	2	0
3	A	1001	NAG	1	0

The following is a two-dimensional graphical depiction of Mogul quality analysis of bond lengths, bond angles, torsion angles, and ring geometry for all instances of the Ligand of Interest. In addition, ligands with molecular weight > 250 and outliers as shown on the validation Tables will also be included. For torsion angles, if less than 5% of the Mogul distribution of torsion angles is within 10 degrees of the torsion angle in question, then that torsion angle is considered an outlier. Any bond that is central to one or more torsion angles identified as an outlier by Mogul will be highlighted in the graph. For rings, the root-mean-square deviation (RMSD) between the ring in question and similar rings identified by Mogul is calculated over all ring torsion angles. If the average RMSD is greater than 60 degrees and the minimal RMSD between the ring in question and any Mogul-identified rings is also greater than 60 degrees, then that ring is considered an outlier. The outliers are highlighted in purple. The color gray indicates Mogul did not find sufficient equivalents in the CSD to analyse the geometry.



5.7 Other polymers [\(i\)](#)

There are no such residues in this entry.

5.8 Polymer linkage issues

There are no chain breaks in this entry.

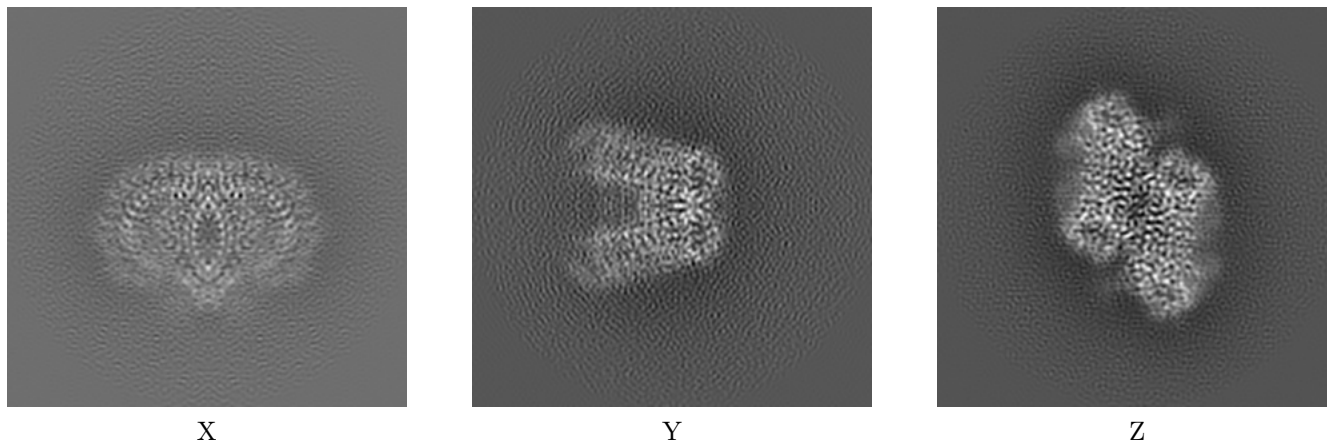
6 Map visualisation [i](#)

This section contains visualisations of the EMDB entry EMD-34091. These allow visual inspection of the internal detail of the map and identification of artifacts.

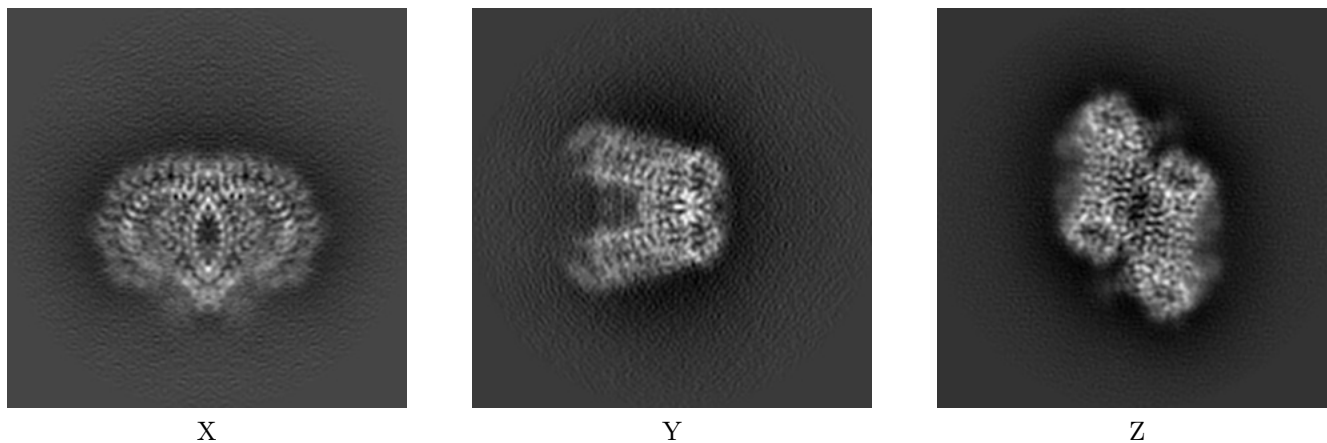
Images derived from a raw map, generated by summing the deposited half-maps, are presented below the corresponding image components of the primary map to allow further visual inspection and comparison with those of the primary map.

6.1 Orthogonal projections [i](#)

6.1.1 Primary map



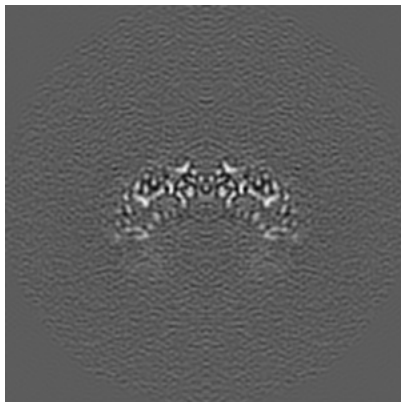
6.1.2 Raw map



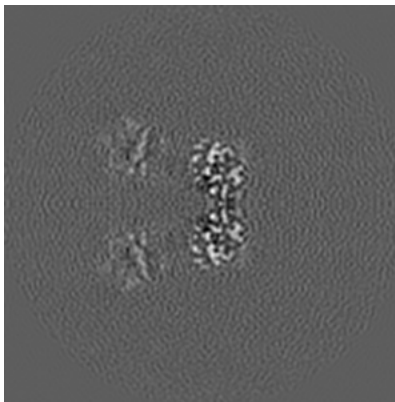
The images above show the map projected in three orthogonal directions.

6.2 Central slices [i](#)

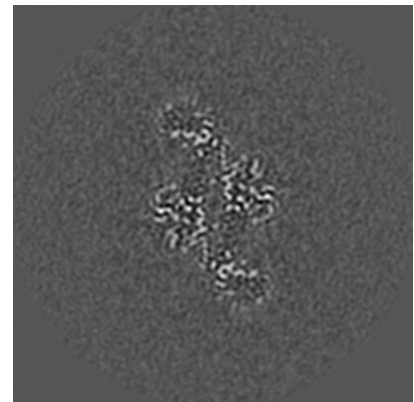
6.2.1 Primary map



X Index: 80

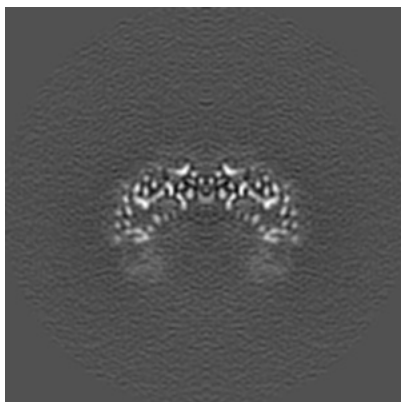


Y Index: 80

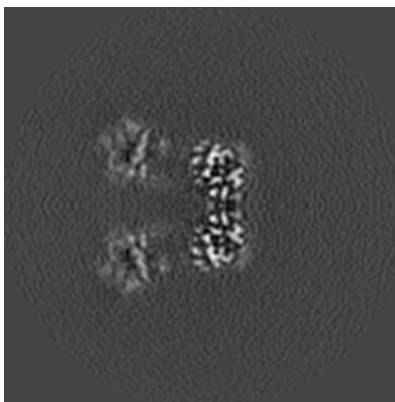


Z Index: 80

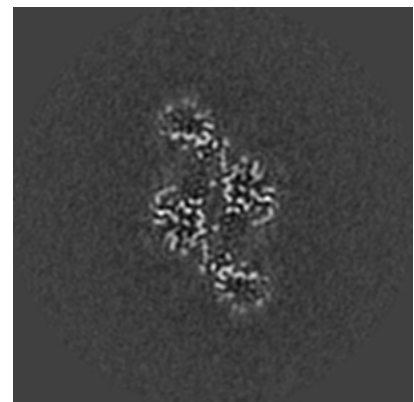
6.2.2 Raw map



X Index: 80



Y Index: 80

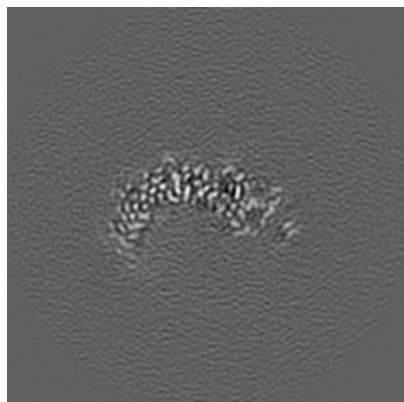


Z Index: 80

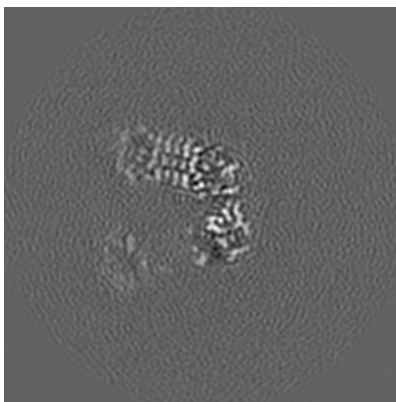
The images above show central slices of the map in three orthogonal directions.

6.3 Largest variance slices [i](#)

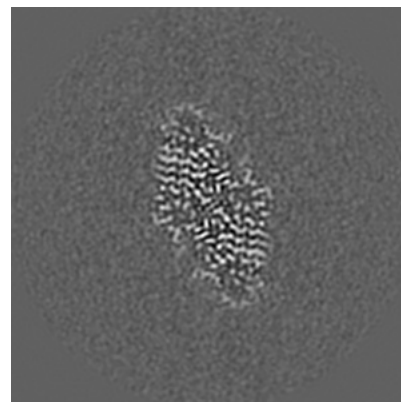
6.3.1 Primary map



X Index: 84

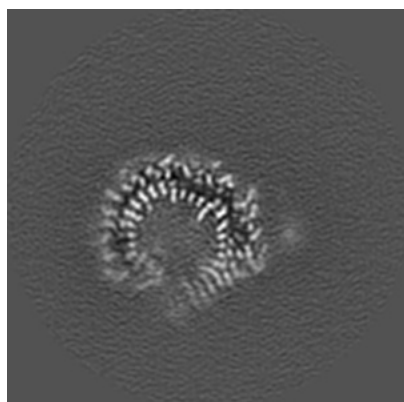


Y Index: 85

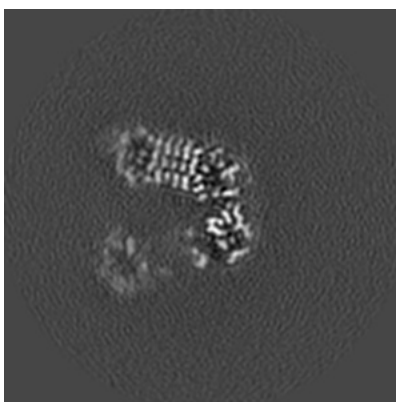


Z Index: 86

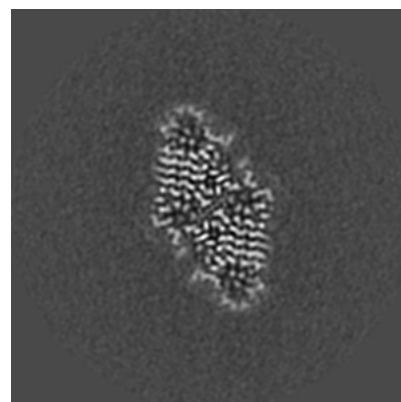
6.3.2 Raw map



X Index: 92



Y Index: 85

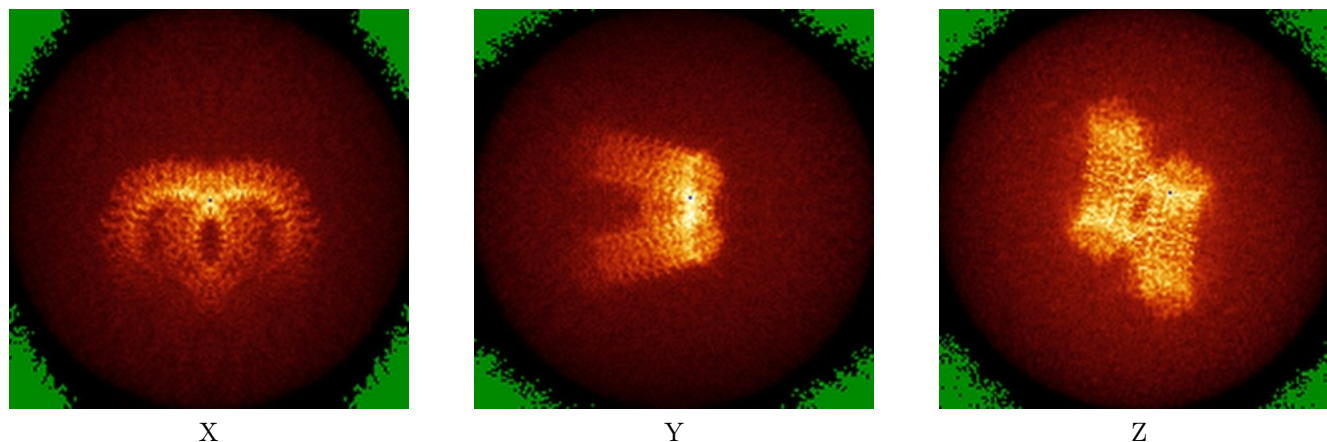


Z Index: 86

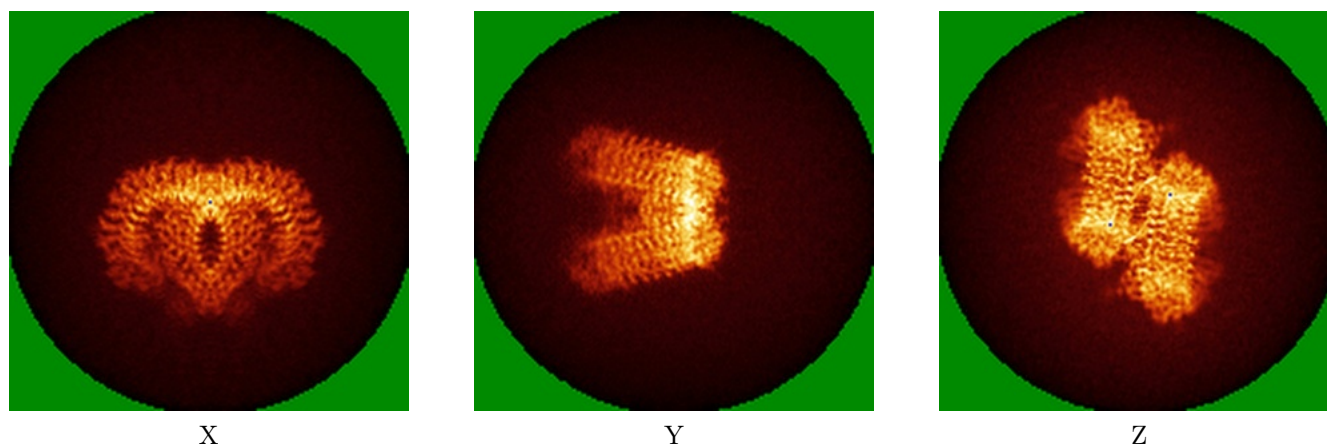
The images above show the largest variance slices of the map in three orthogonal directions.

6.4 Orthogonal standard-deviation projections (False-color) [i](#)

6.4.1 Primary map



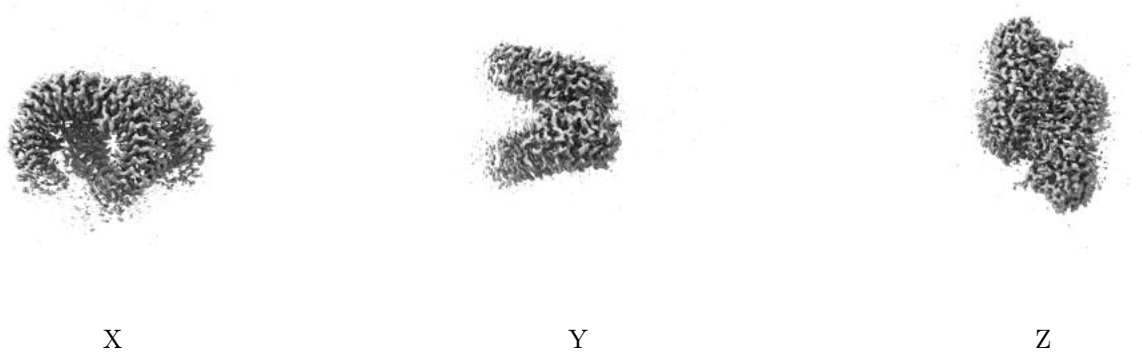
6.4.2 Raw map



The images above show the map standard deviation projections with false color in three orthogonal directions. Minimum values are shown in green, max in blue, and dark to light orange shades represent small to large values respectively.

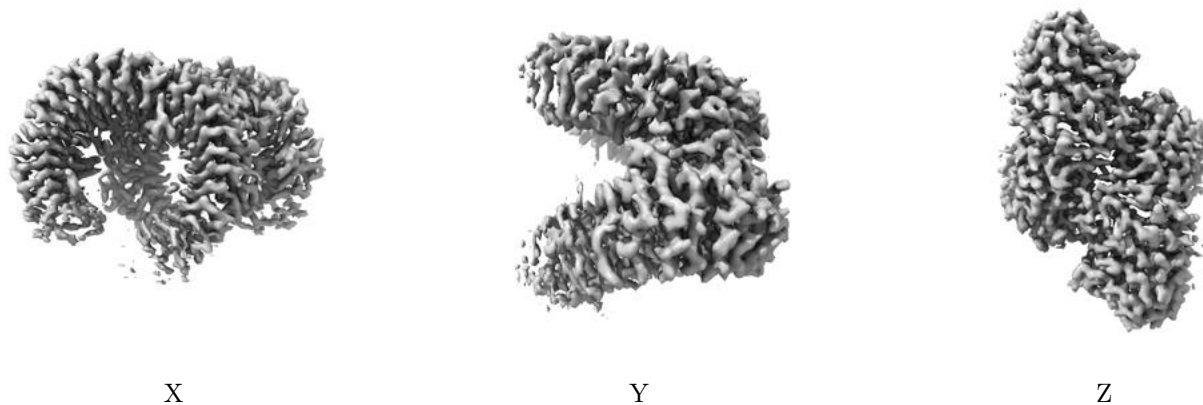
6.5 Orthogonal surface views [i](#)

6.5.1 Primary map



The images above show the 3D surface view of the map at the recommended contour level 0.06. These images, in conjunction with the slice images, may facilitate assessment of whether an appropriate contour level has been provided.

6.5.2 Raw map



These images show the 3D surface of the raw map. The raw map's contour level was selected so that its surface encloses the same volume as the primary map does at its recommended contour level.

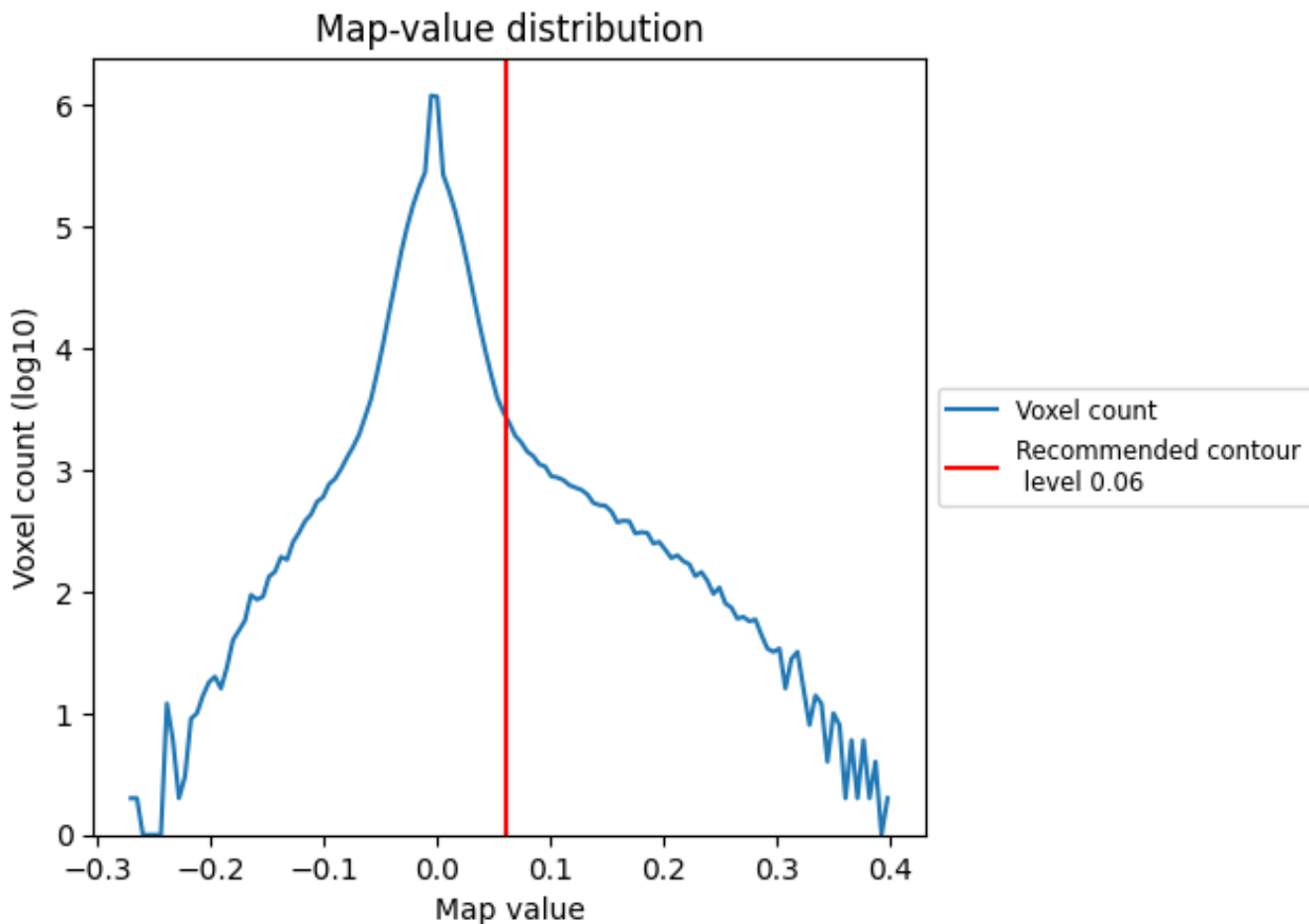
6.6 Mask visualisation [i](#)

This section was not generated. No masks/segmentation were deposited.

7 Map analysis [i](#)

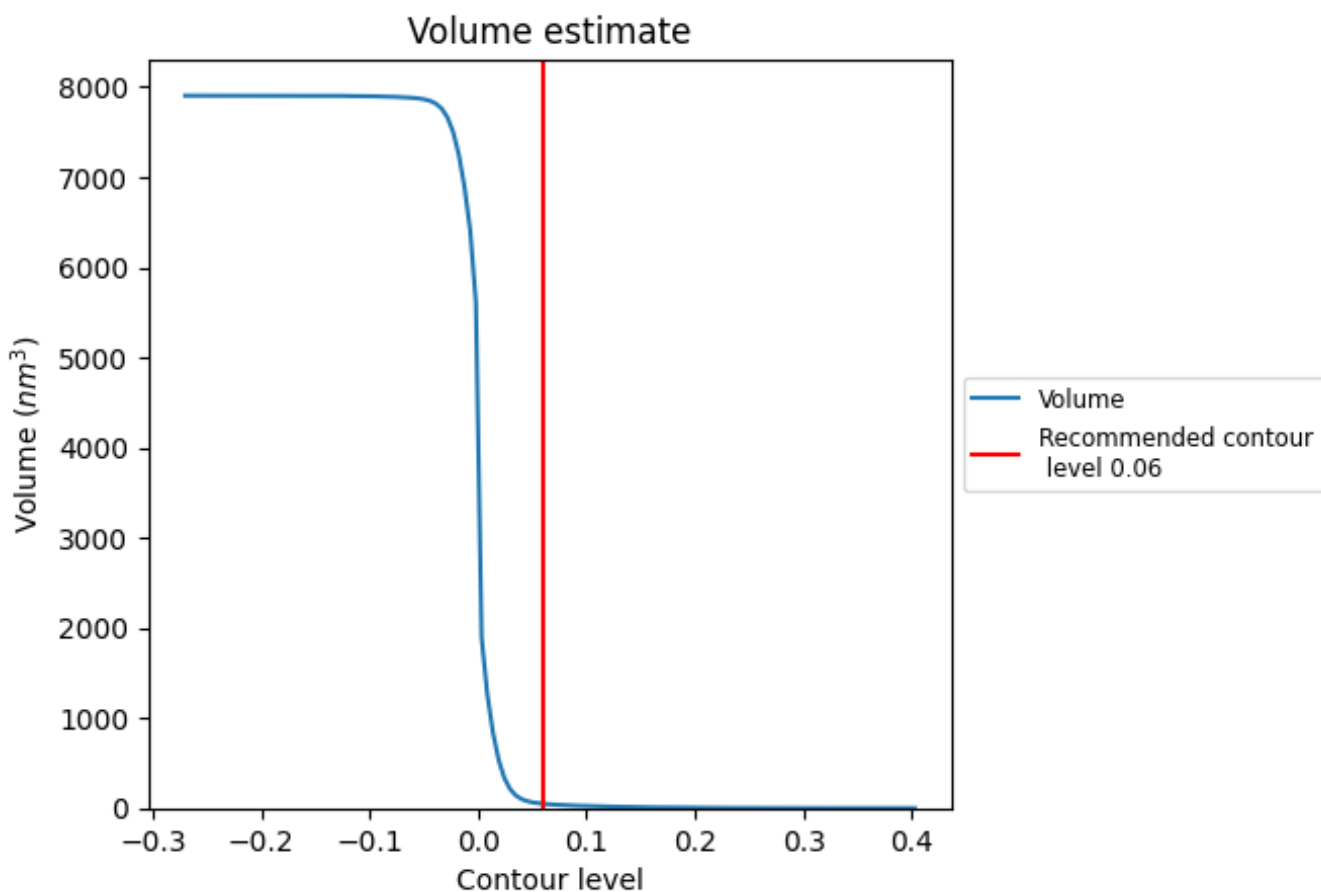
This section contains the results of statistical analysis of the map.

7.1 Map-value distribution [i](#)



The map-value distribution is plotted in 128 intervals along the x-axis. The y-axis is logarithmic. A spike in this graph at zero usually indicates that the volume has been masked.

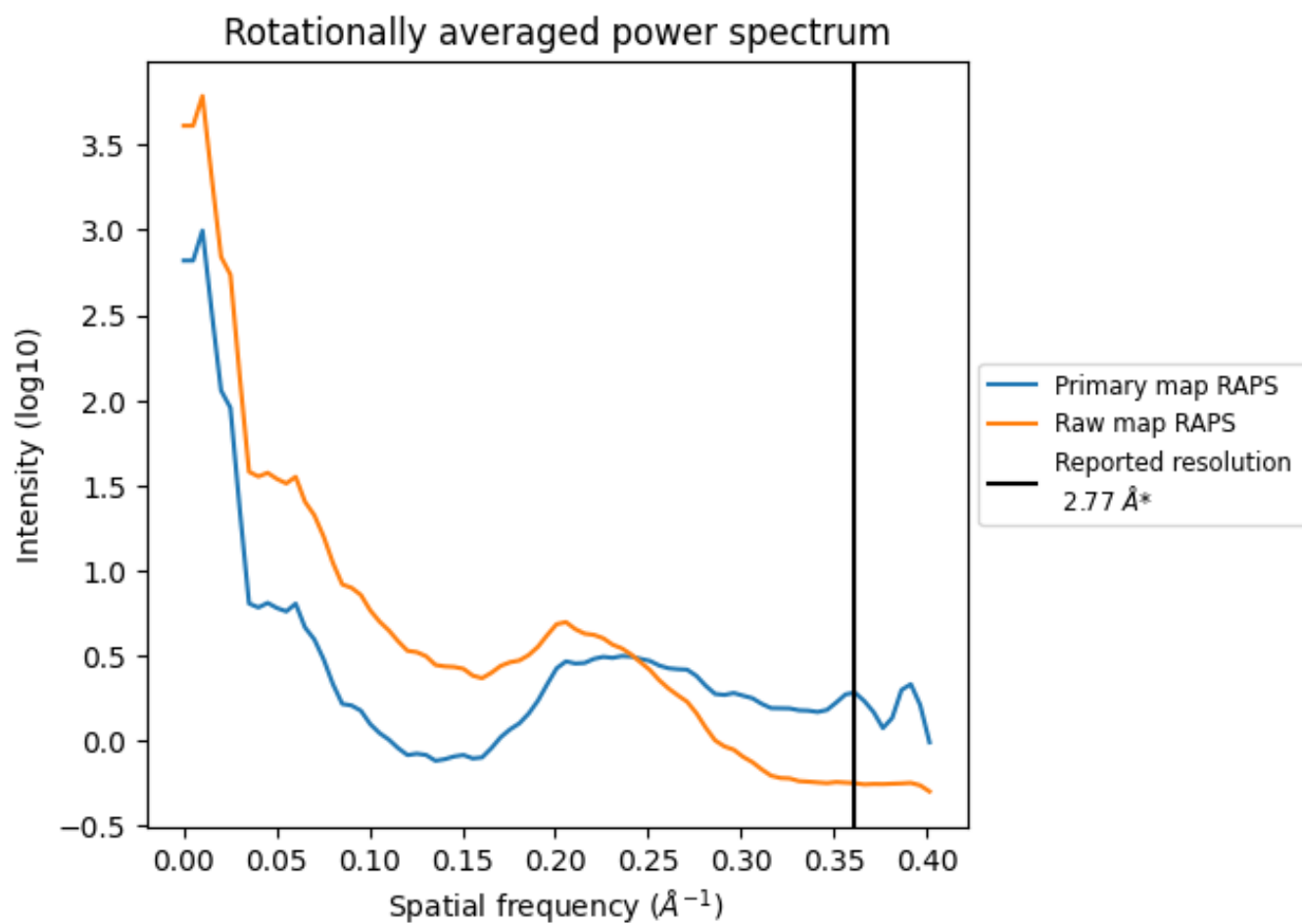
7.2 Volume estimate [i](#)



The volume at the recommended contour level is 49 nm^3 ; this corresponds to an approximate mass of 44 kDa.

The volume estimate graph shows how the enclosed volume varies with the contour level. The recommended contour level is shown as a vertical line and the intersection between the line and the curve gives the volume of the enclosed surface at the given level.

7.3 Rotationally averaged power spectrum [i](#)

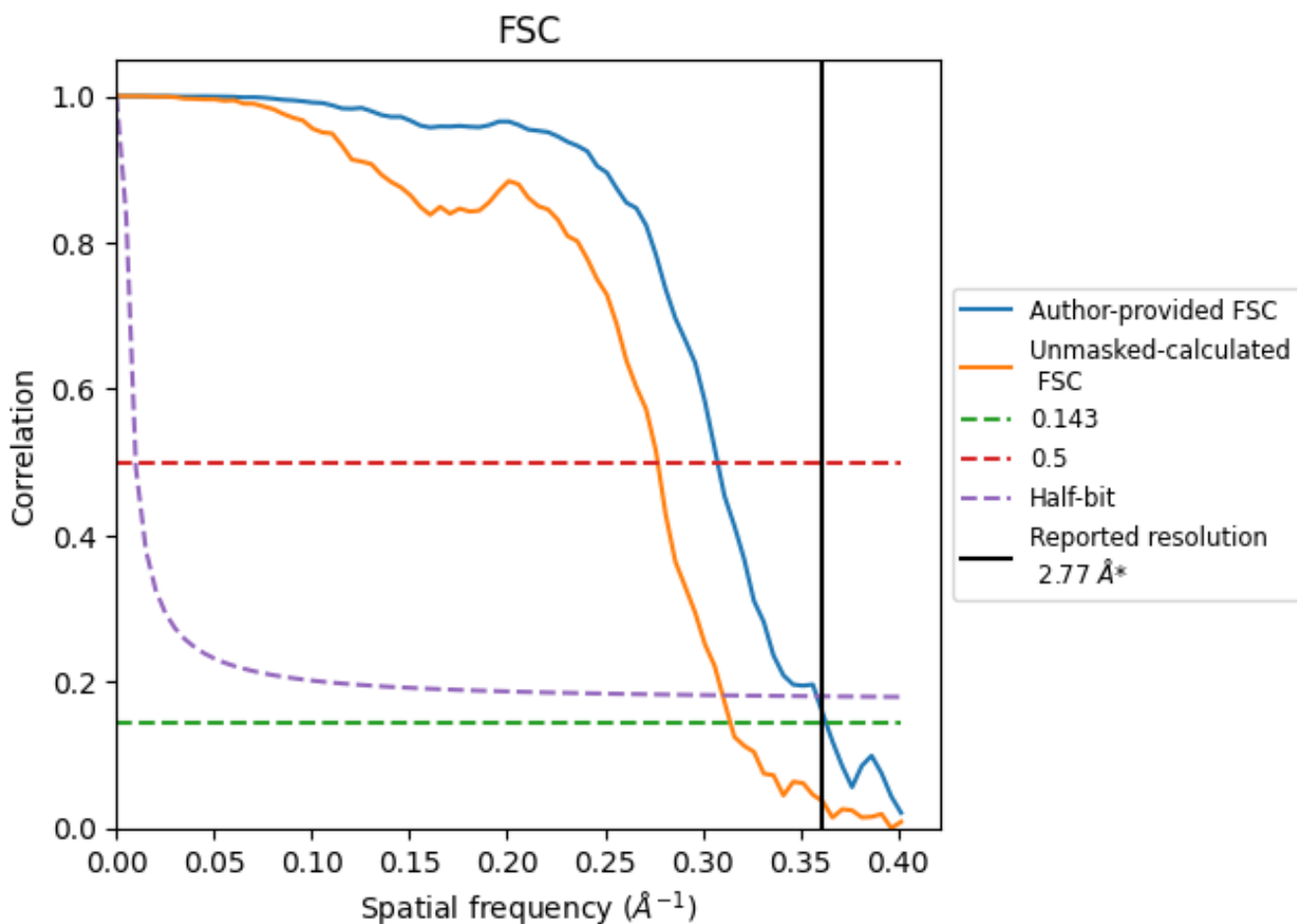


*Reported resolution corresponds to spatial frequency of 0.361 Å⁻¹

8 Fourier-Shell correlation [i](#)

Fourier-Shell Correlation (FSC) is the most commonly used method to estimate the resolution of single-particle and subtomogram-averaged maps. The shape of the curve depends on the imposed symmetry, mask and whether or not the two 3D reconstructions used were processed from a common reference. The reported resolution is shown as a black line. A curve is displayed for the half-bit criterion in addition to lines showing the 0.143 gold standard cut-off and 0.5 cut-off.

8.1 FSC [i](#)



*Reported resolution corresponds to spatial frequency of 0.361 Å⁻¹

8.2 Resolution estimates [i](#)

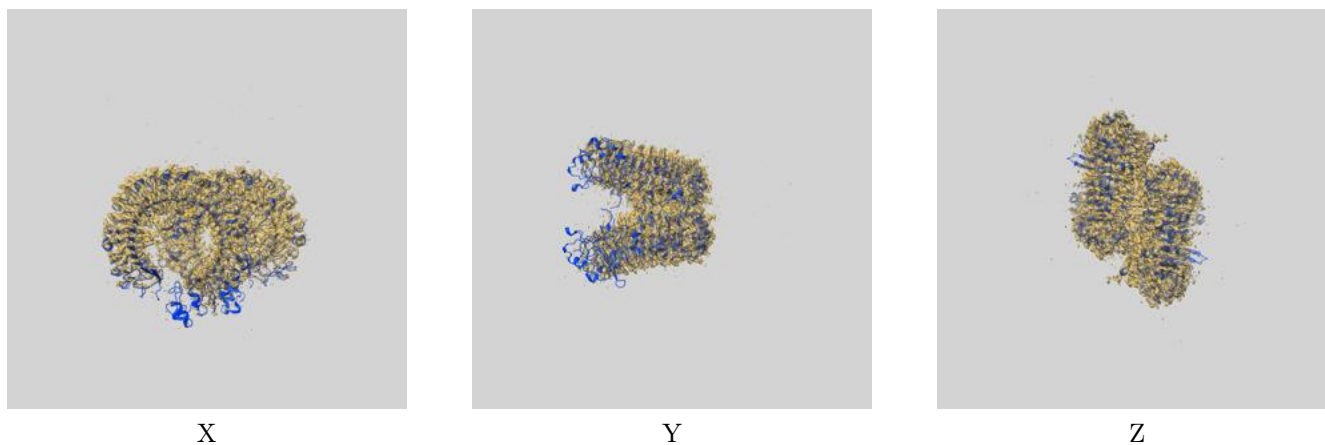
Resolution estimate (Å)	Estimation criterion (FSC cut-off)		
	0.143	0.5	Half-bit
Reported by author	2.77	-	-
Author-provided FSC curve	2.75	3.25	2.79
Unmasked-calculated*	3.18	3.61	3.22

*Resolution estimate based on FSC curve calculated by comparison of deposited half-maps. The value from deposited half-maps intersecting FSC 0.143 CUT-OFF 3.18 differs from the reported value 2.77 by more than 10 %

9 Map-model fit [i](#)

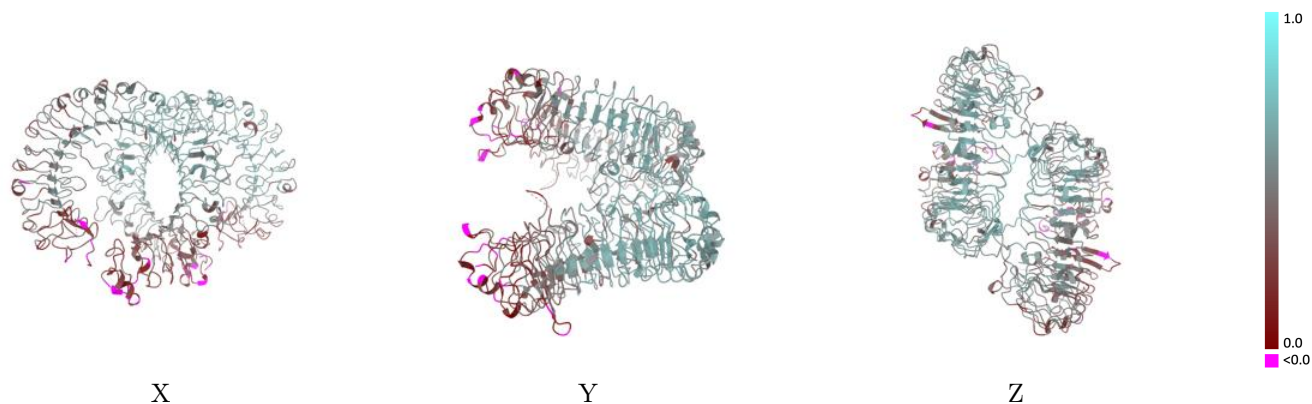
This section contains information regarding the fit between EMDB map EMD-34091 and PDB model 7YTP. Per-residue inclusion information can be found in section 3 on page 7.

9.1 Map-model overlay [i](#)



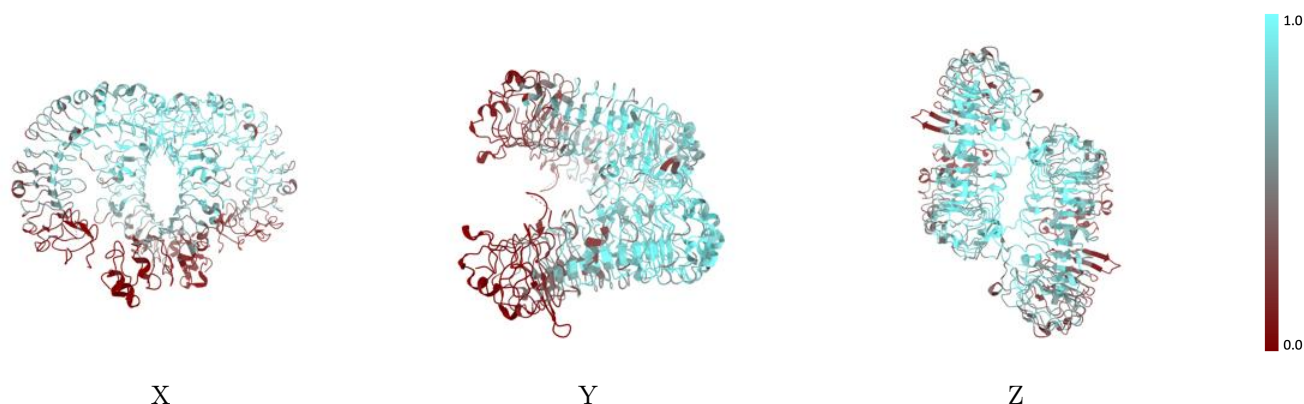
The images above show the 3D surface view of the map at the recommended contour level 0.06 at 50% transparency in yellow overlaid with a ribbon representation of the model coloured in blue. These images allow for the visual assessment of the quality of fit between the atomic model and the map.

9.2 Q-score mapped to coordinate model [\(i\)](#)



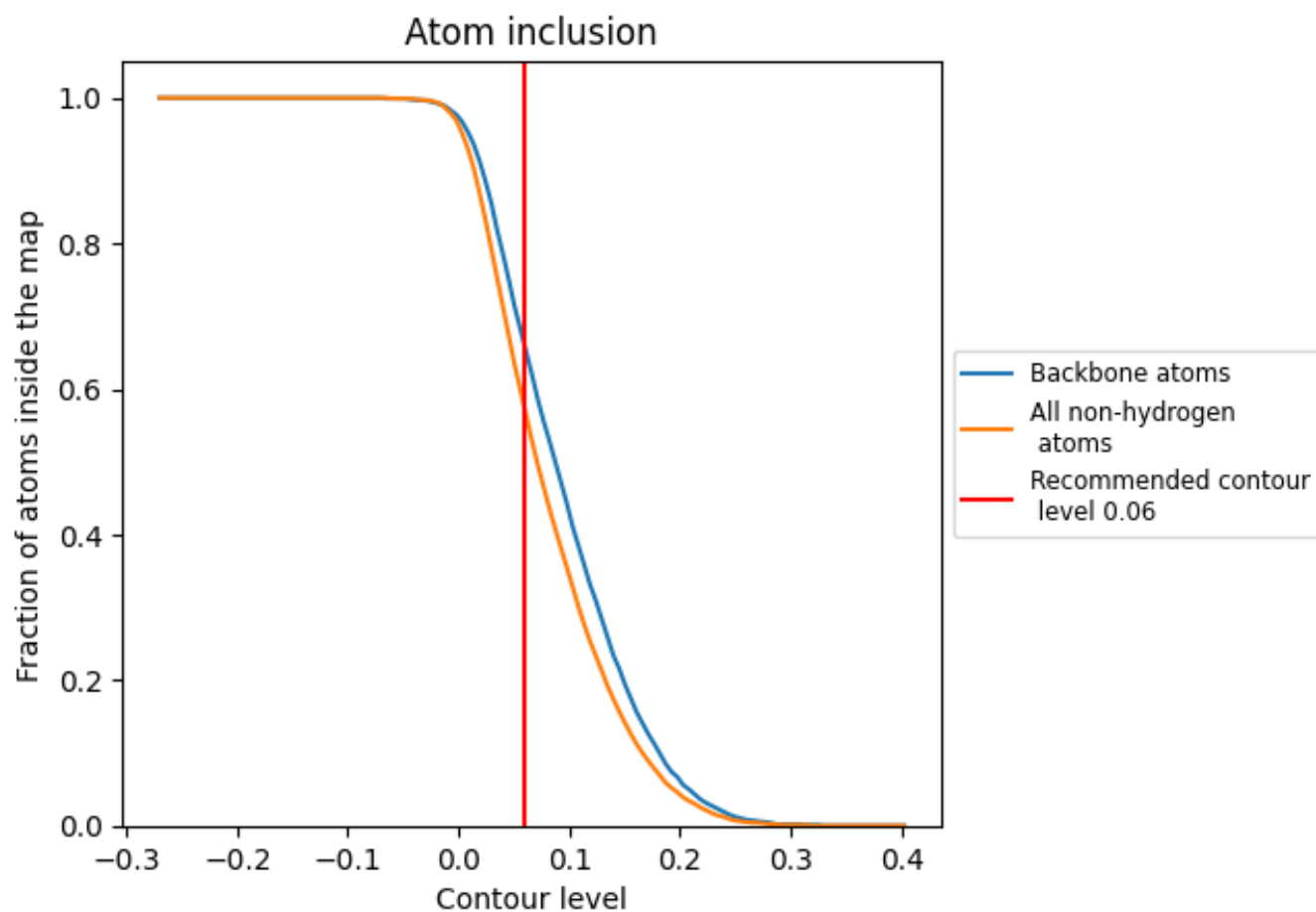
The images above show the model with each residue coloured according to its Q-score. This shows their resolvability in the map with higher Q-score values reflecting better resolvability. Please note: Q-score is calculating the resolvability of atoms, and thus high values are only expected at resolutions at which atoms can be resolved. Low Q-score values may therefore be expected for many entries.

9.3 Atom inclusion mapped to coordinate model [\(i\)](#)



The images above show the model with each residue coloured according to its atom inclusion. This shows to what extent they are inside the map at the recommended contour level (0.06).








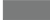










9.4 Atom inclusion [i](#)



At the recommended contour level, 66% of all backbone atoms, 57% of all non-hydrogen atoms, are inside the map.

9.5 Map-model fit summary [i](#)

The table lists the average atom inclusion at the recommended contour level (0.06) and Q-score for the entire model and for each chain.

Chain	Atom inclusion	Q-score
All	 0.5700	 0.4640
A	 0.5980	 0.4910
B	 0.5470	 0.4380
C	 0.5360	 0.4840
D	 0.5360	 0.5250
E	 0.1070	 0.3380
F	 0.3570	 0.3730
G	 0.5710	 0.4570
H	 0.1430	 0.1940

