



Full wwPDB X-ray Structure Validation Report ⓘ

Nov 8, 2021 – 09:09 pm GMT

PDB ID : 6YXD
Title : Room temperature structure of human adiponectin receptor 2 (ADIPOR2) at 2.9 Å resolution determined by Serial Crystallography (SSX) using CrystalDirect
Authors : Healey, R.D.; Basu, S.; Humm, A.S.; Leyrat, C.; Dupeux, F.; Pica, A.; Granier, S.; Marquez, J.A.
Deposited on : 2020-05-01
Resolution : 2.90 Å (reported)

This is a Full wwPDB X-ray Structure Validation Report for a publicly released PDB entry.

We welcome your comments at validation@mail.wwpdb.org
A user guide is available at
<https://www.wwpdb.org/validation/2017/XrayValidationReportHelp>
with specific help available everywhere you see the ⓘ symbol.

The following versions of software and data (see [references ⓘ](#)) were used in the production of this report:

MolProbity : 4.02b-467
Mogul : 1.8.4 (270009), CSD as541be (2020)
Xtriage (Phenix) : 1.13
EDS : 2.23.2
buster-report : 1.1.7 (2018)
Percentile statistics : 20191225.v01 (using entries in the PDB archive December 25th 2019)
Refmac : 5.8.0267
CCP4 : 7.1.010 (Gargrove)
Ideal geometry (proteins) : Engh & Huber (2001)
Ideal geometry (DNA, RNA) : Parkinson et al. (1996)
Validation Pipeline (wwPDB-VP) : 2.23.2

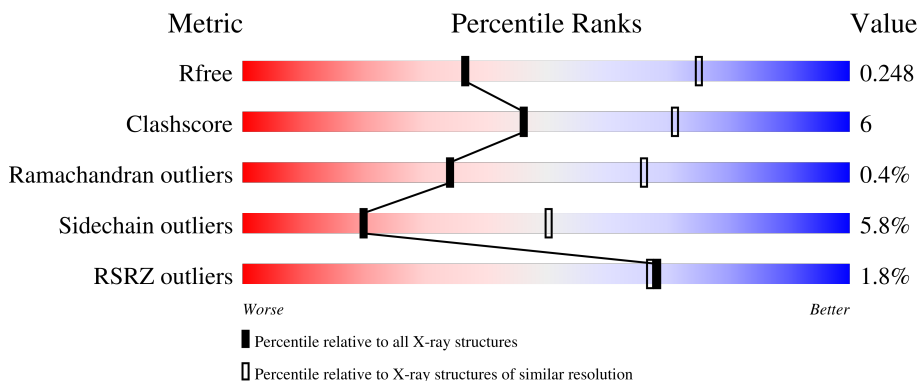
1 Overall quality at a glance

The following experimental techniques were used to determine the structure:

X-RAY DIFFRACTION

The reported resolution of this entry is 2.90 Å.

Percentile scores (ranging between 0-100) for global validation metrics of the entry are shown in the following graphic. The table shows the number of entries on which the scores are based.



Metric	Whole archive (#Entries)	Similar resolution (#Entries, resolution range(Å))
R_{free}	130704	1957 (2.90-2.90)
Clashscore	141614	2172 (2.90-2.90)
Ramachandran outliers	138981	2115 (2.90-2.90)
Sidechain outliers	138945	2117 (2.90-2.90)
RSRZ outliers	127900	1906 (2.90-2.90)

The table below summarises the geometric issues observed across the polymeric chains and their fit to the electron density. The red, orange, yellow and green segments of the lower bar indicate the fraction of residues that contain outliers for ≥ 3 , 2, 1 and 0 types of geometric quality criteria respectively. A grey segment represents the fraction of residues that are not modelled. The numeric value for each fraction is indicated below the corresponding segment, with a dot representing fractions $\leq 5\%$. The upper red bar (where present) indicates the fraction of residues that have poor fit to the electron density. The numeric value is given above the bar.

Mol	Chain	Length	Quality of chain
1	A	292	 2% 81% 16% ..
2	H	119	 82% 15% .
3	L	107	 3% 80% 19% .

The following table lists non-polymeric compounds, carbohydrate monomers and non-standard residues in protein, DNA, RNA chains that are outliers for geometric or electron-density-fit criteria:

Mol	Type	Chain	Res	Chirality	Geometry	Clashes	Electron density
5	OLB	A	403	-	-	-	X
5	OLB	A	406	-	-	-	X

2 Entry composition

There are 8 unique types of molecules in this entry. The entry contains 4251 atoms, of which 0 are hydrogens and 0 are deuteriums.

In the tables below, the ZeroOcc column contains the number of atoms modelled with zero occupancy, the AltConf column contains the number of residues with at least one atom in alternate conformation and the Trace column contains the number of residues modelled with at most 2 atoms.

- Molecule 1 is a protein called Adiponectin receptor protein 2.

Mol	Chain	Residues	Atoms					ZeroOcc	AltConf	Trace
			Total	C	N	O	S			
1	A	285	2297	1541	373	366	17	0	0	0

There are 5 discrepancies between the modelled and reference sequences:

Chain	Residue	Modelled	Actual	Comment	Reference
A	-4	GLY	-	expression tag	UNP Q86V24
A	-3	GLY	-	expression tag	UNP Q86V24
A	-2	SER	-	expression tag	UNP Q86V24
A	-1	GLU	-	expression tag	UNP Q86V24
A	0	PHE	-	expression tag	UNP Q86V24

- Molecule 2 is a protein called V REGION HEAVY CHAIN.

Mol	Chain	Residues	Atoms					ZeroOcc	AltConf	Trace
			Total	C	N	O	S			
2	H	119	927	592	149	182	4	0	0	0

- Molecule 3 is a protein called V REGION LIGHT CHAIN.

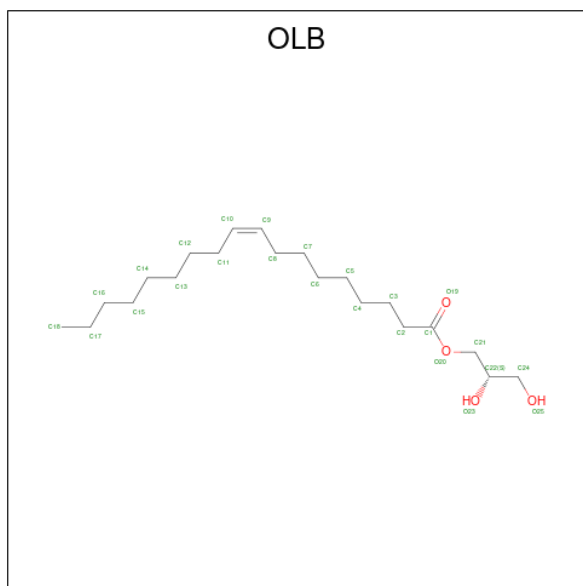
Mol	Chain	Residues	Atoms					ZeroOcc	AltConf	Trace
			Total	C	N	O	S			
3	L	107	820	517	137	163	3	0	0	0

- Molecule 4 is ZINC ION (three-letter code: ZN) (formula: Zn) (labeled as "Ligand of Interest" by depositor).

Mol	Chain	Residues	Atoms		ZeroOcc	AltConf
4	A	1	Total	Zn	0	0
			1	1		

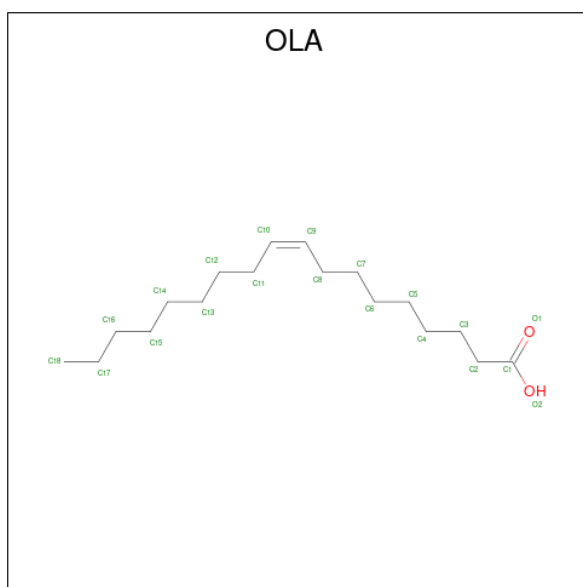
- Molecule 5 is (2S)-2,3-dihydroxypropyl (9Z)-octadec-9-enoate (three-letter code: OLB)

(formula: $C_{21}H_{40}O_4$) (labeled as "Ligand of Interest" by depositor).



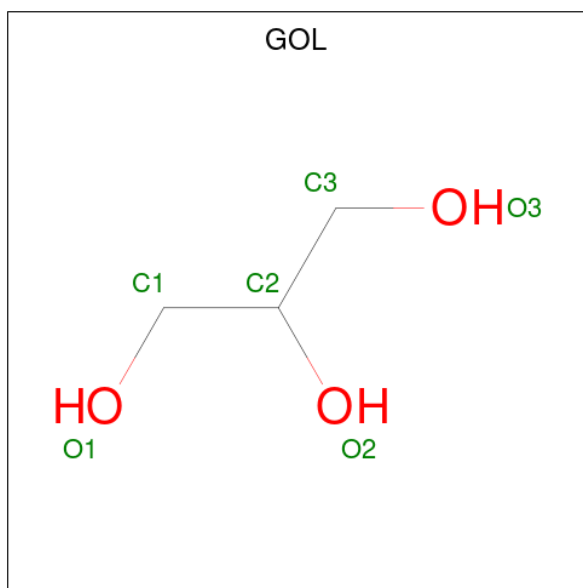
Mol	Chain	Residues	Atoms		ZeroOcc	AltConf
5	A	1	Total	C O	0	0
			25	21 4		
5	A	1	Total	C O	0	0
			25	21 4		
5	A	1	Total	C O	0	0
			25	21 4		
5	L	1	Total	C O	0	0
			25	21 4		

- Molecule 6 is OLEIC ACID (three-letter code: OLA) (formula: $C_{18}H_{34}O_2$) (labeled as "Ligand of Interest" by depositor).



Mol	Chain	Residues	Atoms			ZeroOcc	AltConf
6	A	1	Total	C	O	0	0
			20	18	2		

- Molecule 7 is GLYCEROL (three-letter code: GOL) (formula: $C_3H_8O_3$).



Mol	Chain	Residues	Atoms			ZeroOcc	AltConf
7	L	1	Total	C	O	0	0
			6	3	3		

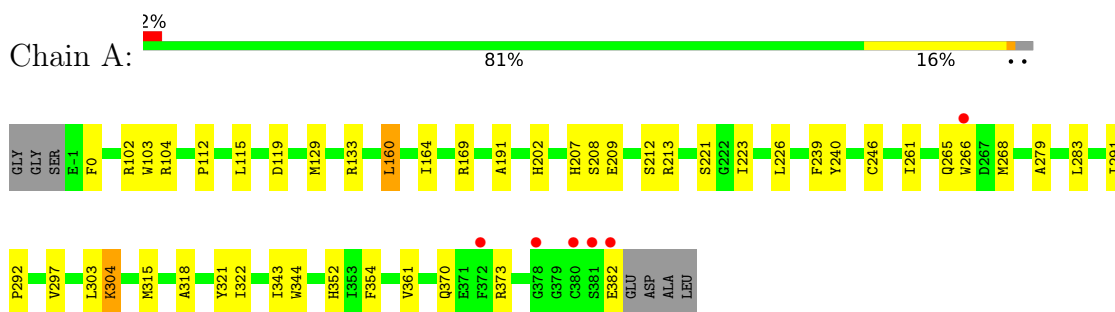
- Molecule 8 is water.

Mol	Chain	Residues	Atoms		ZeroOcc	AltConf
8	A	26	Total 26	O 26	0	0
8	H	15	Total 15	O 15	0	0
8	L	14	Total 14	O 14	0	0

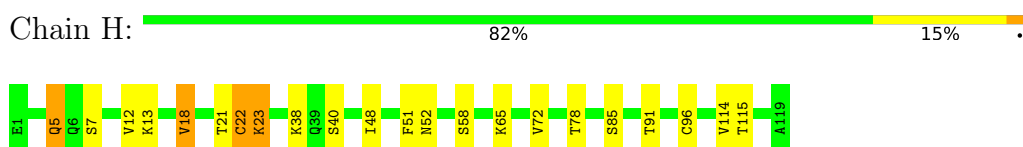
3 Residue-property plots [i](#)

These plots are drawn for all protein, RNA, DNA and oligosaccharide chains in the entry. The first graphic for a chain summarises the proportions of the various outlier classes displayed in the second graphic. The second graphic shows the sequence view annotated by issues in geometry and electron density. Residues are color-coded according to the number of geometric quality criteria for which they contain at least one outlier: green = 0, yellow = 1, orange = 2 and red = 3 or more. A red dot above a residue indicates a poor fit to the electron density ($RSRZ > 2$). Stretches of 2 or more consecutive residues without any outlier are shown as a green connector. Residues present in the sample, but not in the model, are shown in grey.

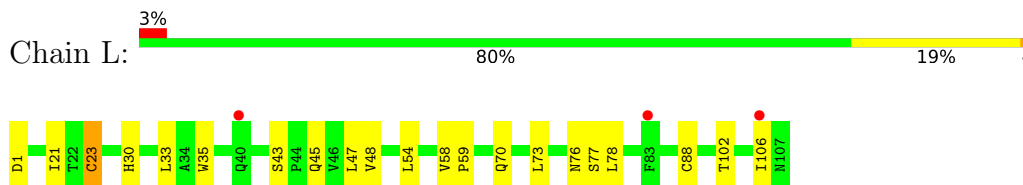
- Molecule 1: Adiponectin receptor protein 2



- Molecule 2: V REGION HEAVY CHAIN



- Molecule 3: V REGION LIGHT CHAIN



4 Data and refinement statistics

Property	Value	Source
Space group	P 21 2 21	Depositor
Cell constants a, b, c, α , β , γ	75.46Å 100.76Å 114.92Å 90.00° 90.00° 90.00°	Depositor
Resolution (Å)	50.00 – 2.90 49.91 – 2.90	Depositor EDS
% Data completeness (in resolution range)	75.7 (50.00-2.90) 75.7 (49.91-2.90)	Depositor EDS
R_{merge}	(Not available)	Depositor
R_{sym}	(Not available)	Depositor
$\langle I/\sigma(I) \rangle$ ¹	5.34 (at 2.91Å)	Xtrriage
Refinement program	BUSTER 2.10.3 (3-OCT-2019)	Depositor
R, R_{free}	0.199 , 0.253 0.197 , 0.248	Depositor DCC
R_{free} test set	760 reflections (5.01%)	wwPDB-VP
Wilson B-factor (Å ²)	42.3	Xtrriage
Anisotropy	0.863	Xtrriage
Bulk solvent k_{sol} (e/Å ³), B_{sol} (Å ²)	(Not available) , (Not available)	EDS
L-test for twinning ²	$\langle L \rangle = 0.49$, $\langle L^2 \rangle = 0.32$	Xtrriage
Estimated twinning fraction	No twinning to report.	Xtrriage
F_o, F_c correlation	0.91	EDS
Total number of atoms	4251	wwPDB-VP
Average B, all atoms (Å ²)	48.0	wwPDB-VP

Xtrriage's analysis on translational NCS is as follows: *The largest off-origin peak in the Patterson function is 6.18% of the height of the origin peak. No significant pseudotranslation is detected.*

¹Intensities estimated from amplitudes.

²Theoretical values of $\langle |L| \rangle$, $\langle L^2 \rangle$ for acentric reflections are 0.5, 0.333 respectively for untwinned datasets, and 0.375, 0.2 for perfectly twinned datasets.

5 Model quality [i](#)

5.1 Standard geometry [i](#)

Bond lengths and bond angles in the following residue types are not validated in this section: ZN, OLA, OLB, GOL

The Z score for a bond length (or angle) is the number of standard deviations the observed value is removed from the expected value. A bond length (or angle) with $|Z| > 5$ is considered an outlier worth inspection. RMSZ is the root-mean-square of all Z scores of the bond lengths (or angles).

Mol	Chain	Bond lengths		Bond angles	
		RMSZ	# Z >5	RMSZ	# Z >5
1	A	0.31	0/2381	0.50	0/3236
2	H	0.34	0/951	0.56	0/1291
3	L	0.34	0/840	0.51	0/1140
All	All	0.32	0/4172	0.51	0/5667

There are no bond length outliers.

There are no bond angle outliers.

There are no chirality outliers.

There are no planarity outliers.

5.2 Too-close contacts [i](#)

In the following table, the Non-H and H(model) columns list the number of non-hydrogen atoms and hydrogen atoms in the chain respectively. The H(added) column lists the number of hydrogen atoms added and optimized by MolProbity. The Clashes column lists the number of clashes within the asymmetric unit, whereas Symm-Clashes lists symmetry-related clashes.

Mol	Chain	Non-H	H(model)	H(added)	Clashes	Symm-Clashes
1	A	2297	0	2271	25	0
2	H	927	0	888	12	0
3	L	820	0	786	10	0
4	A	1	0	0	0	0
5	A	100	0	160	6	0
5	L	25	0	40	4	0
6	A	20	0	33	3	0
7	L	6	0	8	0	0
8	A	26	0	0	0	0
8	H	15	0	0	1	0

Continued on next page...

Continued from previous page...

Mol	Chain	Non-H	H(model)	H(added)	Clashes	Symm-Clashes
8	L	14	0	0	0	0
All	All	4251	0	4186	52	0

The all-atom clashscore is defined as the number of clashes found per 1000 atoms (including hydrogen atoms). The all-atom clashscore for this structure is 6.

All (52) close contacts within the same asymmetric unit are listed below, sorted by their clash magnitude.

Atom-1	Atom-2	Interatomic distance (Å)	Clash overlap (Å)
3:L:23:CYS:HG	3:L:88:CYS:HG	1.14	0.91
5:A:404:OLB:H23	5:A:406:OLB:H21	1.53	0.91
5:A:404:OLB:C10	5:A:406:OLB:H21	2.15	0.77
1:A:279:ALA:HA	6:A:405:OLA:H42	1.72	0.72
1:A:239:PHE:HB2	1:A:246:CYS:HB2	1.79	0.65
1:A:133:ARG:HB2	5:L:201:OLB:H3	1.81	0.63
5:A:404:OLB:H23	5:A:406:OLB:C21	2.28	0.61
2:H:12:VAL:HG11	2:H:18:VAL:HG13	1.82	0.61
5:A:404:OLB:C9	5:A:406:OLB:H21	2.32	0.59
1:A:291:ILE:HB	1:A:292:PRO:HD3	1.88	0.56
1:A:169:ARG:HH22	1:A:370:GLN:NE2	2.04	0.55
5:A:404:OLB:H221	5:A:406:OLB:H21	1.88	0.55
2:H:22:CYS:HG	2:H:96:CYS:HG	1.52	0.54
2:H:7:SER:HB3	2:H:21:THR:HB	1.89	0.53
1:A:202:HIS:CD2	1:A:352:HIS:HE1	2.27	0.52
2:H:23:LYS:HG2	2:H:78:THR:HG22	1.93	0.51
1:A:239:PHE:CB	1:A:246:CYS:HB2	2.40	0.51
1:A:283:LEU:HD11	1:A:322:ILE:HD13	1.94	0.50
1:A:318:ALA:O	1:A:322:ILE:HG12	2.11	0.50
2:H:51:PHE:HD1	2:H:58:SER:HB3	1.76	0.49
3:L:23:CYS:CB	3:L:88:CYS:HG	2.25	0.48
1:A:209:GLU:O	1:A:213:ARG:HG2	2.14	0.48
1:A:104:ARG:NH1	2:H:52:ASN:OD1	2.47	0.47
2:H:13:LYS:NZ	8:H:201:HOH:O	2.47	0.47
2:H:23:LYS:HA	2:H:78:THR:HG22	1.96	0.47
3:L:47:LEU:HA	3:L:58:VAL:HG21	1.97	0.46
3:L:30:HIS:HD2	5:L:201:OLB:H3A	1.82	0.45
3:L:78:LEU:HD22	3:L:106:ILE:HD11	1.97	0.45
3:L:30:HIS:CD2	5:L:201:OLB:H3A	2.50	0.45
1:A:240:TYR:CD2	1:A:373:ARG:HD2	2.51	0.45
3:L:21:ILE:HG12	3:L:102:THR:HG21	1.99	0.44
1:A:202:HIS:CD2	1:A:352:HIS:CE1	3.05	0.44

Continued on next page...

Continued from previous page...

Atom-1	Atom-2	Interatomic distance (Å)	Clash overlap (Å)
2:H:38:LYS:HB2	2:H:48:ILE:HD11	2.00	0.44
1:A:207:HIS:ND1	1:A:208:SER:OG	2.44	0.44
3:L:48:VAL:HG22	3:L:54:LEU:HD12	1.99	0.44
2:H:91:THR:HG23	2:H:115:THR:HA	1.98	0.43
1:A:303:LEU:HB3	1:A:304:LYS:NZ	2.33	0.43
3:L:35:TRP:CE2	3:L:73:LEU:HB2	2.53	0.43
1:A:321:TYR:CZ	6:A:405:OLA:H152	2.54	0.43
1:A:112:PRO:HD2	1:A:115:LEU:HB2	2.01	0.42
1:A:160:LEU:O	1:A:164:ILE:HG12	2.19	0.42
1:A:261:ILE:O	1:A:265:GLN:OE1	2.37	0.42
1:A:266:TRP:CE2	1:A:268:MET:HB2	2.55	0.42
1:A:223:ILE:HD13	6:A:405:OLA:H22	2.02	0.41
1:A:103:TRP:CD1	1:A:129:MET:SD	3.14	0.41
1:A:191:ALA:HA	1:A:226:LEU:HD13	2.02	0.41
1:A:221:SER:HB3	5:A:403:OLB:H19	2.02	0.41
5:L:201:OLB:H23	5:L:201:OLB:H18	1.83	0.41
3:L:58:VAL:HA	3:L:59:PRO:HD3	1.99	0.41
2:H:18:VAL:HG21	2:H:114:VAL:HG11	2.02	0.40
1:A:343:ILE:HG22	1:A:344:TRP:CE2	2.56	0.40
2:H:5:GLN:HE21	2:H:5:GLN:HB2	1.70	0.40

There are no symmetry-related clashes.

5.3 Torsion angles [i](#)

5.3.1 Protein backbone [i](#)

In the following table, the Percentiles column shows the percent Ramachandran outliers of the chain as a percentile score with respect to all X-ray entries followed by that with respect to entries of similar resolution.

The Analysed column shows the number of residues for which the backbone conformation was analysed, and the total number of residues.

Mol	Chain	Analysed	Favoured	Allowed	Outliers	Percentiles	
1	A	283/292 (97%)	276 (98%)	7 (2%)	0	100	100
2	H	117/119 (98%)	111 (95%)	5 (4%)	1 (1%)	17	48
3	L	105/107 (98%)	101 (96%)	3 (3%)	1 (1%)	15	45
All	All	505/518 (98%)	488 (97%)	15 (3%)	2 (0%)	34	66

All (2) Ramachandran outliers are listed below:

Mol	Chain	Res	Type
3	L	77	SER
2	H	85	SER

5.3.2 Protein sidechains [i](#)

In the following table, the Percentiles column shows the percent sidechain outliers of the chain as a percentile score with respect to all X-ray entries followed by that with respect to entries of similar resolution.

The Analysed column shows the number of residues for which the sidechain conformation was analysed, and the total number of residues.

Mol	Chain	Analysed	Rotameric	Outliers	Percentiles
1	A	242/246 (98%)	231 (96%)	11 (4%)	27 61
2	H	99/99 (100%)	92 (93%)	7 (7%)	14 40
3	L	90/90 (100%)	83 (92%)	7 (8%)	12 34
All	All	431/435 (99%)	406 (94%)	25 (6%)	20 50

All (25) residues with a non-rotameric sidechain are listed below:

Mol	Chain	Res	Type
1	A	0	PHE
1	A	102	ARG
1	A	119	ASP
1	A	160	LEU
1	A	212	SER
1	A	297	VAL
1	A	304	LYS
1	A	315	MET
1	A	354	PHE
1	A	361	VAL
1	A	382	GLU
2	H	5	GLN
2	H	18	VAL
2	H	22	CYS
2	H	23	LYS
2	H	40	SER
2	H	65	LYS
2	H	72	VAL
3	L	1	ASP

Continued on next page...

Continued from previous page...

Mol	Chain	Res	Type
3	L	23	CYS
3	L	33	LEU
3	L	43	SER
3	L	45	GLN
3	L	70	GLN
3	L	76	ASN

Sometimes sidechains can be flipped to improve hydrogen bonding and reduce clashes. All (7) such sidechains are listed below:

Mol	Chain	Res	Type
1	A	108	HIS
1	A	179	GLN
1	A	242	ASN
1	A	265	GLN
1	A	370	GLN
2	H	5	GLN
3	L	45	GLN

5.3.3 RNA [i](#)

There are no RNA molecules in this entry.

5.4 Non-standard residues in protein, DNA, RNA chains [i](#)

There are no non-standard protein/DNA/RNA residues in this entry.

5.5 Carbohydrates [i](#)

There are no monosaccharides in this entry.

5.6 Ligand geometry [i](#)

Of 8 ligands modelled in this entry, 1 is monoatomic - leaving 7 for Mogul analysis.

There are no bond length outliers.

There are no bond angle outliers.

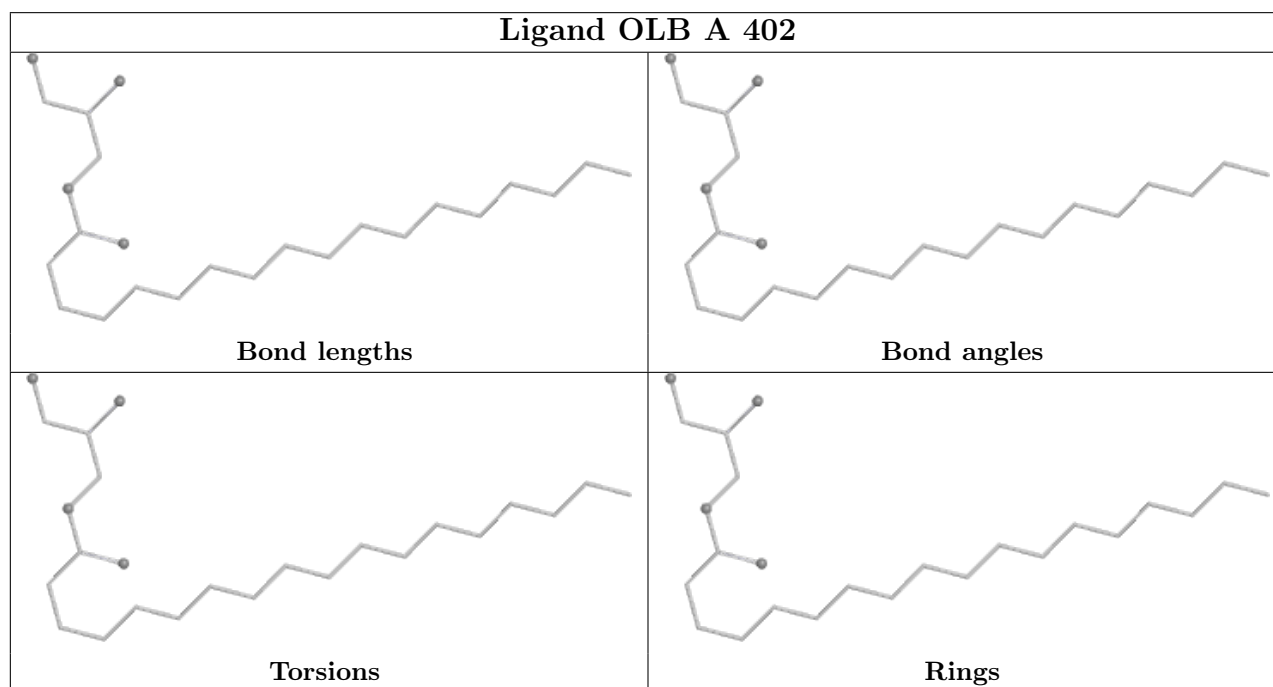
There are no chirality outliers.

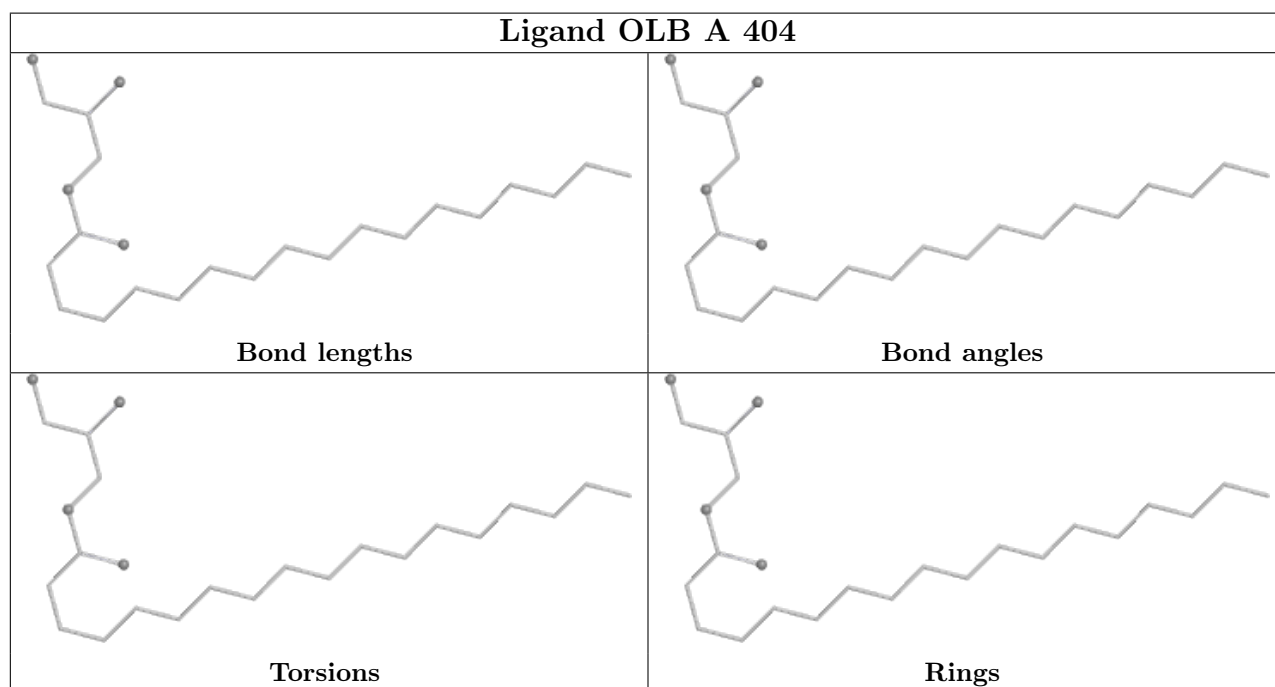
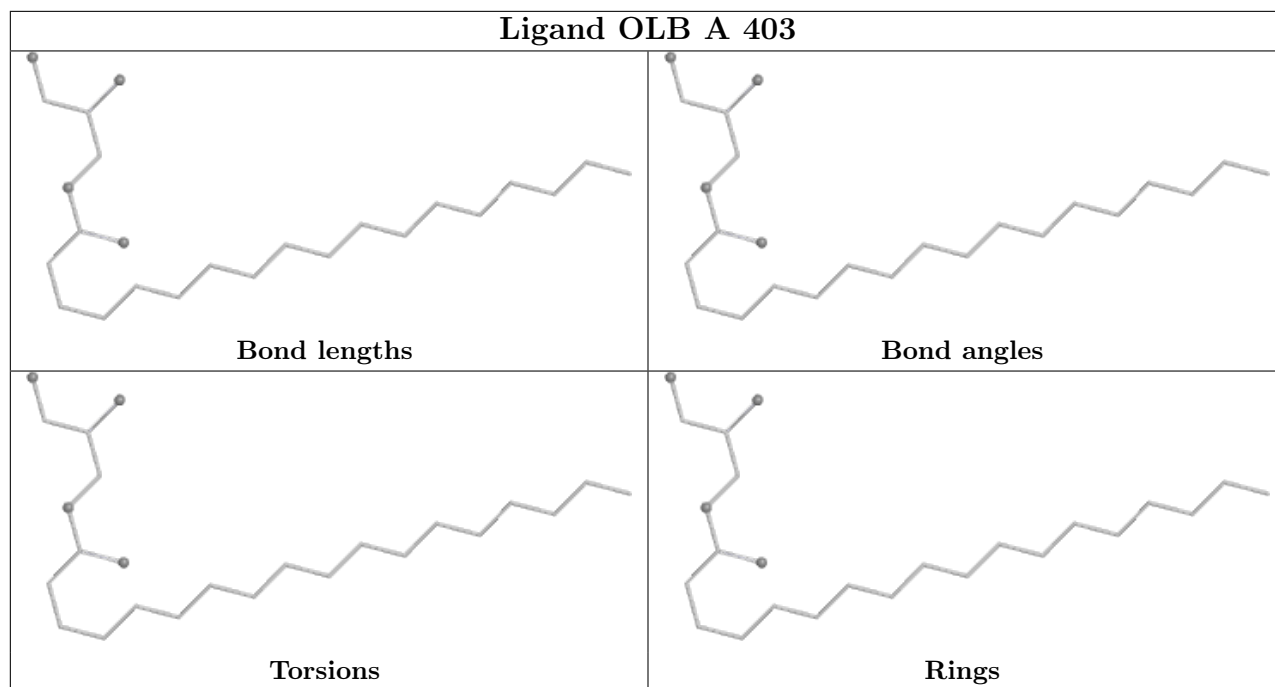
There are no torsion outliers.

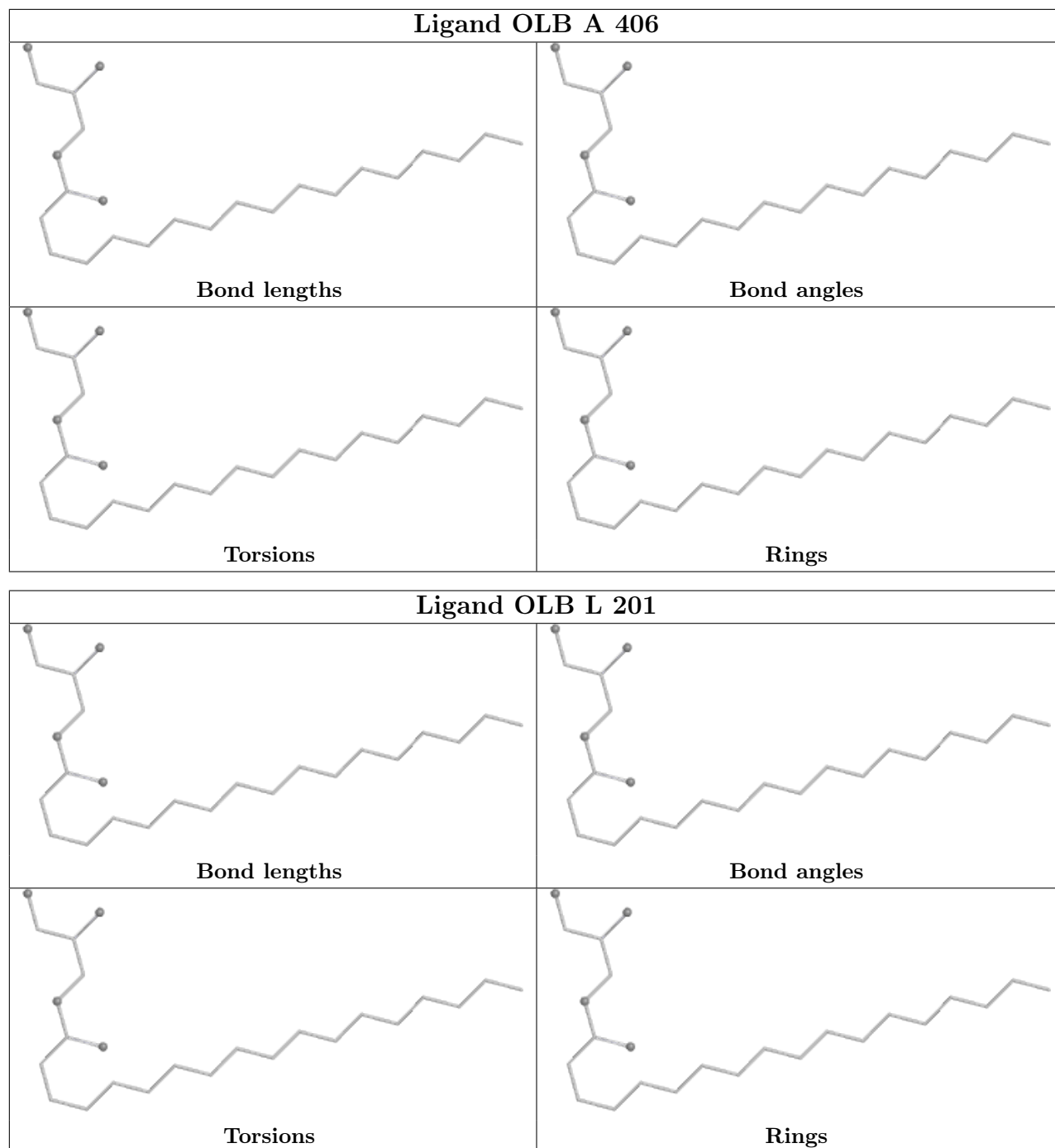
There are no ring outliers.

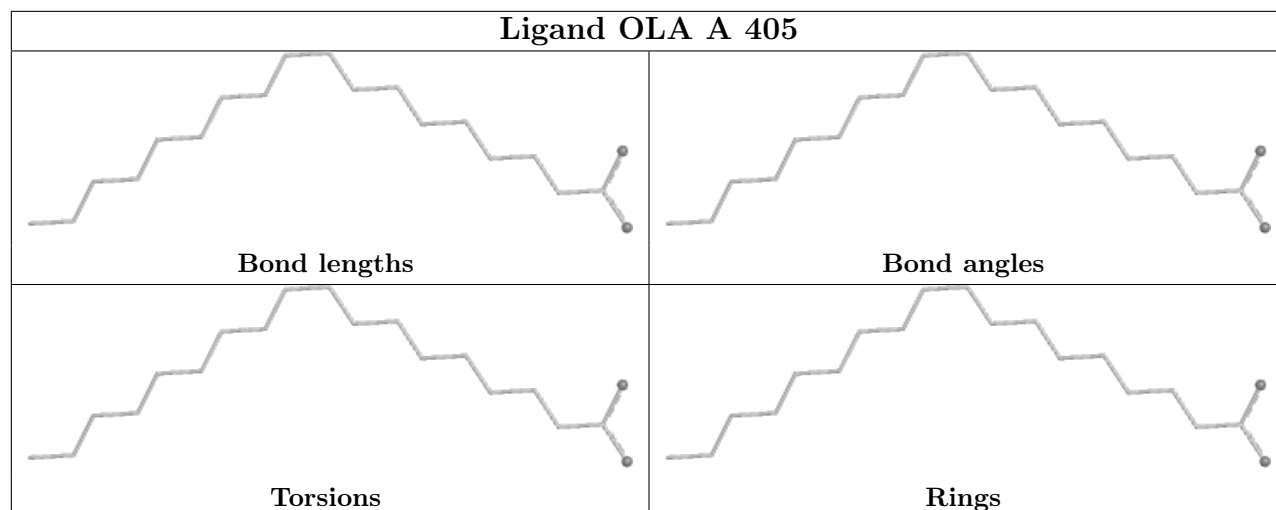
No monomer is involved in short contacts.

The following is a two-dimensional graphical depiction of Mogul quality analysis of bond lengths, bond angles, torsion angles, and ring geometry for all instances of the Ligand of Interest. In addition, ligands with molecular weight > 250 and outliers as shown on the validation Tables will also be included. For torsion angles, if less than 5% of the Mogul distribution of torsion angles is within 10 degrees of the torsion angle in question, then that torsion angle is considered an outlier. Any bond that is central to one or more torsion angles identified as an outlier by Mogul will be highlighted in the graph. For rings, the root-mean-square deviation (RMSD) between the ring in question and similar rings identified by Mogul is calculated over all ring torsion angles. If the average RMSD is greater than 60 degrees and the minimal RMSD between the ring in question and any Mogul-identified rings is also greater than 60 degrees, then that ring is considered an outlier. The outliers are highlighted in purple. The color gray indicates Mogul did not find sufficient equivalents in the CSD to analyse the geometry.









5.7 Other polymers [i](#)

There are no such residues in this entry.

5.8 Polymer linkage issues [i](#)

There are no chain breaks in this entry.

6 Fit of model and data [i](#)

6.1 Protein, DNA and RNA chains [i](#)

In the following table, the column labelled ‘#RSRZ> 2’ contains the number (and percentage) of RSRZ outliers, followed by percent RSRZ outliers for the chain as percentile scores relative to all X-ray entries and entries of similar resolution. The OWAB column contains the minimum, median, 95th percentile and maximum values of the occupancy-weighted average B-factor per residue. The column labelled ‘Q< 0.9’ lists the number of (and percentage) of residues with an average occupancy less than 0.9.

Mol	Chain	Analysed	<RSRZ>	#RSRZ>2	OWAB(Å ²)	Q<0.9
1	A	285/292 (97%)	-0.24	6 (2%) 63 61	31, 45, 82, 121	0
2	H	119/119 (100%)	-0.35	0 100 100	28, 48, 61, 67	0
3	L	107/107 (100%)	-0.26	3 (2%) 53 49	28, 42, 56, 61	0
All	All	511/518 (98%)	-0.27	9 (1%) 68 67	28, 45, 74, 121	0

All (9) RSRZ outliers are listed below:

Mol	Chain	Res	Type	RSRZ
1	A	380	CYS	5.0
1	A	378	GLY	3.4
1	A	372	PHE	3.3
3	L	83	PHE	3.3
1	A	381	SER	3.0
3	L	40	GLN	2.7
1	A	382	GLU	2.5
1	A	266	TRP	2.4
3	L	106	ILE	2.2

6.2 Non-standard residues in protein, DNA, RNA chains [i](#)

There are no non-standard protein/DNA/RNA residues in this entry.

6.3 Carbohydrates [i](#)

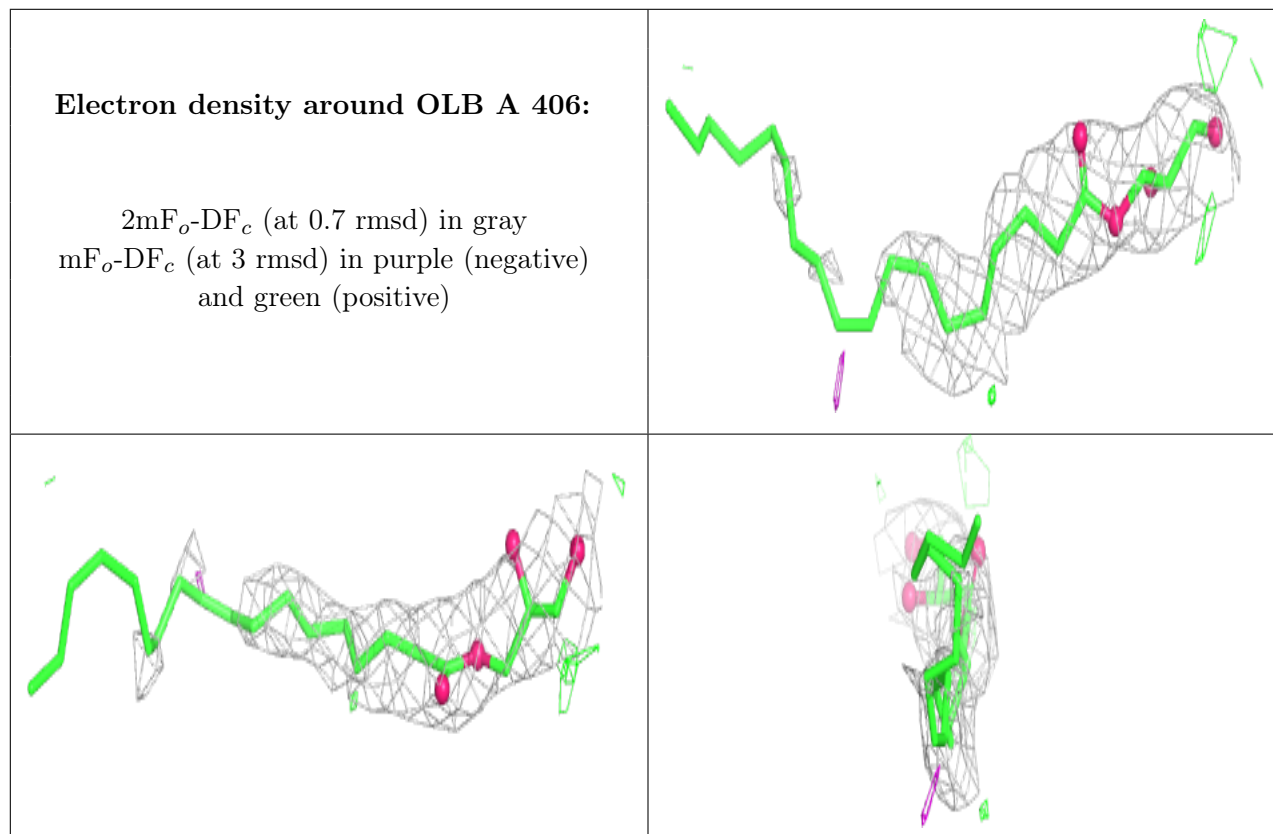
There are no monosaccharides in this entry.

6.4 Ligands [i](#)

In the following table, the Atoms column lists the number of modelled atoms in the group and the number defined in the chemical component dictionary. The B-factors column lists the minimum, median, 95th percentile and maximum values of B factors of atoms in the group. The column labelled 'Q< 0.9' lists the number of atoms with occupancy less than 0.9.

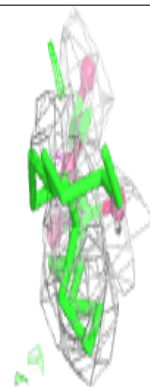
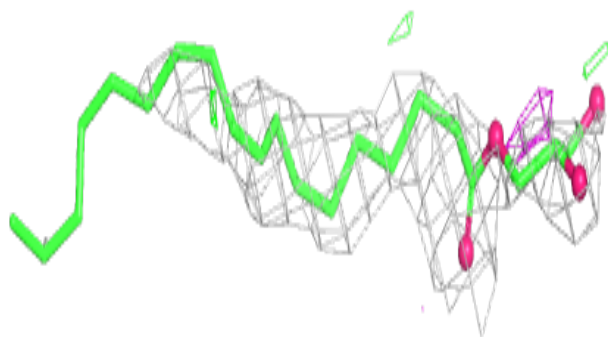
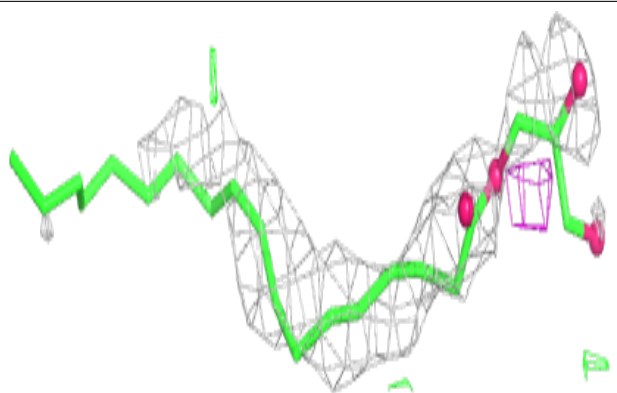
Mol	Type	Chain	Res	Atoms	RSCC	RSR	B-factors(Å ²)	Q<0.9
5	OLB	A	406	25/25	0.70	0.41	79,80,80,80	0
5	OLB	A	403	25/25	0.71	0.53	78,79,84,85	0
5	OLB	A	404	25/25	0.79	0.25	64,68,74,74	0
5	OLB	A	402	25/25	0.81	0.43	78,81,85,85	0
5	OLB	L	201	25/25	0.83	0.26	58,62,66,66	0
7	GOL	L	202	6/6	0.86	0.51	88,88,88,88	0
6	OLA	A	405	20/20	0.93	0.21	36,41,43,43	0
4	ZN	A	401	1/1	0.97	0.14	33,33,33,33	0

The following is a graphical depiction of the model fit to experimental electron density of all instances of the Ligand of Interest. In addition, ligands with molecular weight > 250 and outliers as shown on the geometry validation Tables will also be included. Each fit is shown from different orientation to approximate a three-dimensional view.

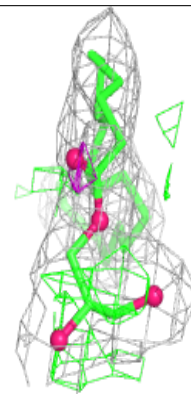
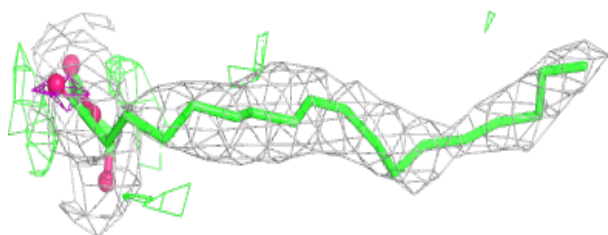
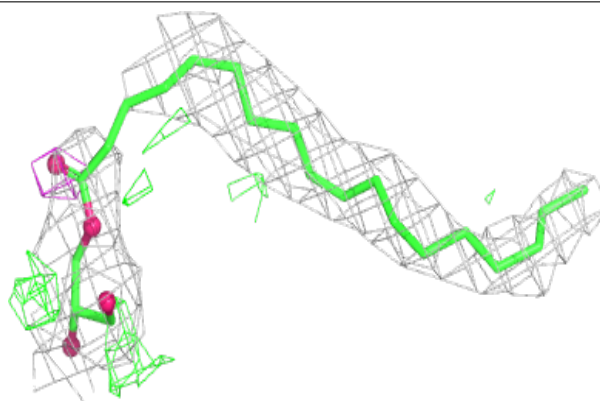


Electron density around OLB A 403:

$2mF_o-DF_c$ (at 0.7 rmsd) in gray
 mF_o-DF_c (at 3 rmsd) in purple (negative)
and green (positive)

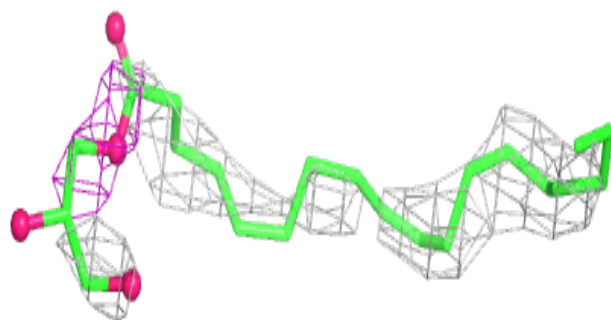
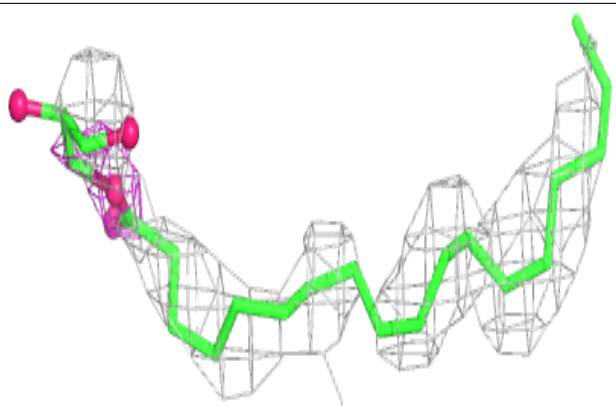
**Electron density around OLB A 404:**

$2mF_o-DF_c$ (at 0.7 rmsd) in gray
 mF_o-DF_c (at 3 rmsd) in purple (negative)
and green (positive)

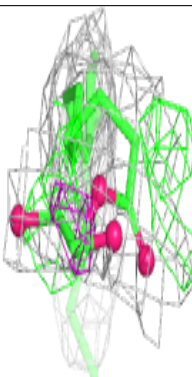
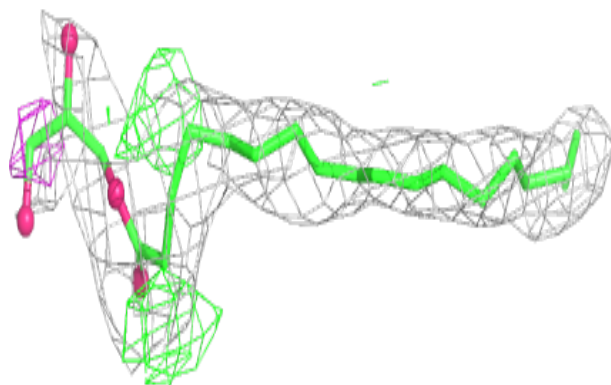
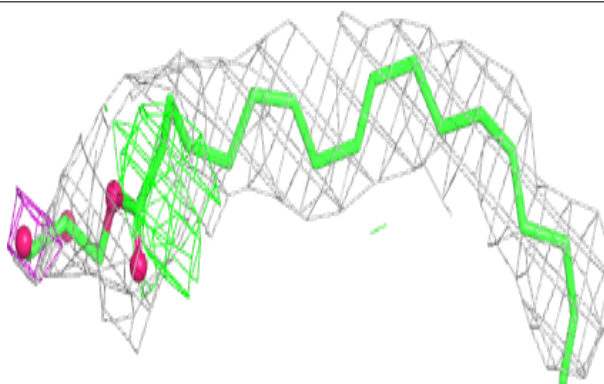


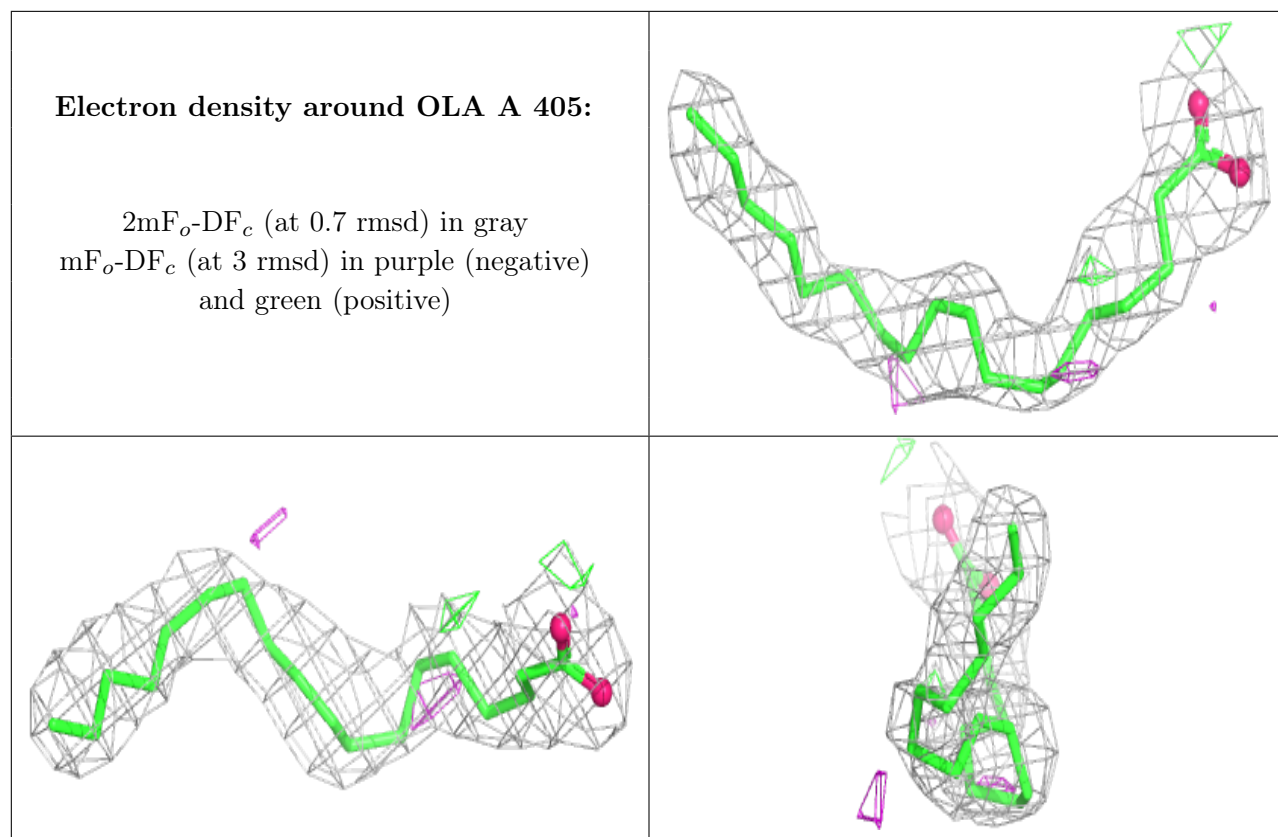
Electron density around OLB A 402:

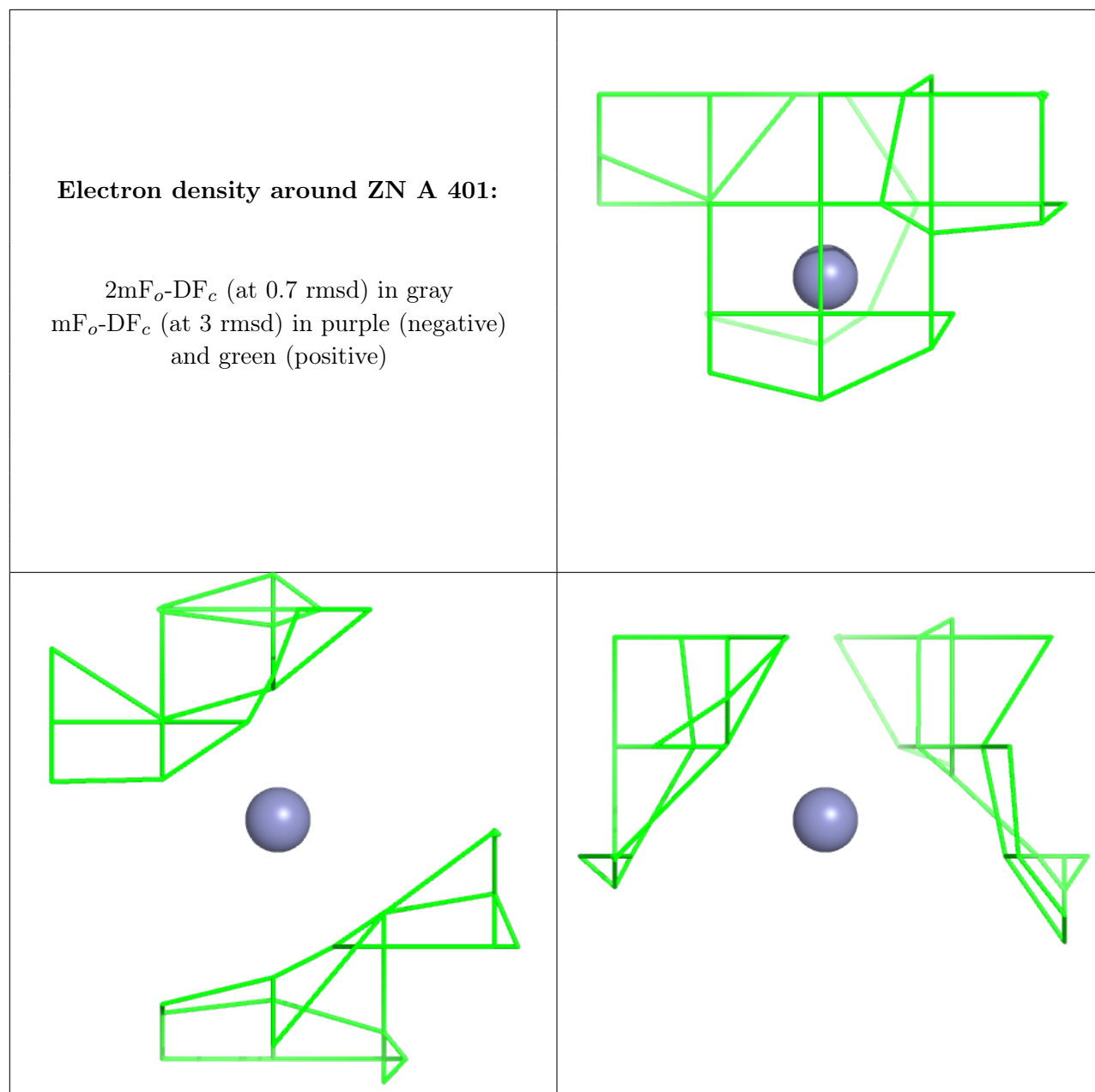
$2mF_o-DF_c$ (at 0.7 rmsd) in gray
 mF_o-DF_c (at 3 rmsd) in purple (negative)
and green (positive)

**Electron density around OLB L 201:**

$2mF_o-DF_c$ (at 0.7 rmsd) in gray
 mF_o-DF_c (at 3 rmsd) in purple (negative)
and green (positive)







6.5 Other polymers [\(i\)](#)

There are no such residues in this entry.