



# Full wwPDB X-ray Structure Validation Report ⓘ

Aug 1, 2024 – 12:20 PM JST

PDB ID : 8YXA  
Title : Crystal structure of the HSA complex with cefazolin and myristate  
Authors : Kawai, A.  
Deposited on : 2024-04-02  
Resolution : 2.50 Å(reported)

This is a Full wwPDB X-ray Structure Validation Report for a publicly released PDB entry.

We welcome your comments at [validation@mail.wwpdb.org](mailto:validation@mail.wwpdb.org)

A user guide is available at

<https://www.wwpdb.org/validation/2017/XrayValidationReportHelp>

with specific help available everywhere you see the ⓘ symbol.

The types of validation reports are described at

<http://www.wwpdb.org/validation/2017/FAQs#types>.

---

The following versions of software and data (see [references ⓘ](#)) were used in the production of this report:

MolProbity : 4.02b-467  
Mogul : 1.8.5 (274361), CSD as541be (2020)  
Xtriage (Phenix) : 1.13  
EDS : 2.37.1  
buster-report : 1.1.7 (2018)  
Percentile statistics : 20191225.v01 (using entries in the PDB archive December 25th 2019)  
Refmac : 5.8.0158  
CCP4 : 7.0.044 (Gargrove)  
Ideal geometry (proteins) : Engh & Huber (2001)  
Ideal geometry (DNA, RNA) : Parkinson et al. (1996)  
Validation Pipeline (wwPDB-VP) : 2.37.1

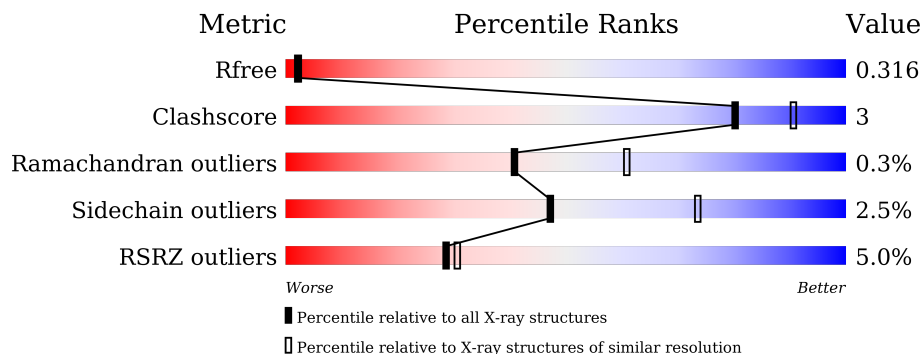
# 1 Overall quality at a glance

The following experimental techniques were used to determine the structure:

*X-RAY DIFFRACTION*

The reported resolution of this entry is 2.50 Å.

Percentile scores (ranging between 0-100) for global validation metrics of the entry are shown in the following graphic. The table shows the number of entries on which the scores are based.



Metric	Whole archive (#Entries)	Similar resolution (#Entries, resolution range(Å))
$R_{free}$	130704	4661 (2.50-2.50)
Clashscore	141614	5346 (2.50-2.50)
Ramachandran outliers	138981	5231 (2.50-2.50)
Sidechain outliers	138945	5233 (2.50-2.50)
RSRZ outliers	127900	4559 (2.50-2.50)

The table below summarises the geometric issues observed across the polymeric chains and their fit to the electron density. The red, orange, yellow and green segments of the lower bar indicate the fraction of residues that contain outliers for  $\geq 3$ , 2, 1 and 0 types of geometric quality criteria respectively. A grey segment represents the fraction of residues that are not modelled. The numeric value for each fraction is indicated below the corresponding segment, with a dot representing fractions  $\leq 5\%$ . The upper red bar (where present) indicates the fraction of residues that have poor fit to the electron density. The numeric value is given above the bar.

Mol	Chain	Length	Quality of chain
1	A	585	
1	B	585	

The following table lists non-polymeric compounds, carbohydrate monomers and non-standard residues in protein, DNA, RNA chains that are outliers for geometric or electron-density-fit criteria:

Mol	Type	Chain	Res	Chirality	Geometry	Clashes	Electron density
3	MYR	A	604	-	-	-	X
3	MYR	B	603	-	-	-	X

## 2 Entry composition [i](#)

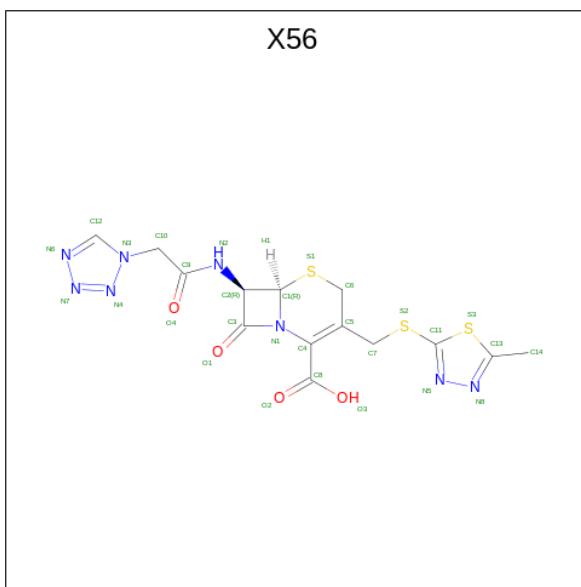
There are 3 unique types of molecules in this entry. The entry contains 8439 atoms, of which 0 are hydrogens and 0 are deuteriums.

In the tables below, the ZeroOcc column contains the number of atoms modelled with zero occupancy, the AltConf column contains the number of residues with at least one atom in alternate conformation and the Trace column contains the number of residues modelled with at most 2 atoms.

- Molecule 1 is a protein called Serum albumin.

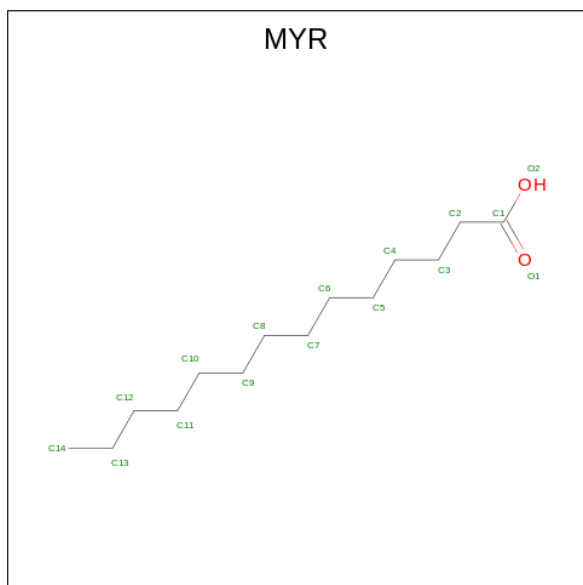
Mol	Chain	Residues	Atoms					ZeroOcc	AltConf	Trace
			Total	C	N	O	S			
1	A	573	Total 4061	C 2547	N 700	O 774	S 40	0	0	0
1	B	578	Total 4246	C 2659	N 722	O 824	S 41	0	0	0

- Molecule 2 is (6 {R},7 {R})-3-[(5-methyl-1,3,4-thiadiazol-2-yl)sulfanylmethyl]-8-oxidanylidene-7-[2-(1,2,3,4-tetrazol-1-yl)ethanoylamino]-5-thia-1-azabicyclo[4.2.0]oct-2-ene-2-carboxylic acid (three-letter code: X56) (formula: C<sub>14</sub>H<sub>14</sub>N<sub>8</sub>O<sub>4</sub>S<sub>3</sub>) (labeled as "Ligand of Interest" by depositor).



Mol	Chain	Residues	Atoms					ZeroOcc	AltConf
			Total	C	N	O	S		
2	A	1	Total 29	C 14	N 8	O 4	S 3	0	0
2	B	1	Total 29	C 14	N 8	O 4	S 3	0	0

- Molecule 3 is MYRISTIC ACID (three-letter code: MYR) (formula: C<sub>14</sub>H<sub>28</sub>O<sub>2</sub>).



Mol	Chain	Residues	Atoms			ZeroOcc	AltConf
3	A	1	Total	C	O	0	0
			16	14	2		
3	A	1	Total	C	O	0	0
			13	11	2		
3	A	1	Total	C	O	0	0
			16	14	2		
3	B	1	Total	C	O	0	0
			13	11	2		
3	B	1	Total	C	O	0	0
			16	14	2		



## 4 Data and refinement statistics

Property	Value	Source
Space group	P 1	Depositor
Cell constants a, b, c, $\alpha$ , $\beta$ , $\gamma$	38.80Å 94.35Å 94.46Å 105.19° 101.78° 90.03°	Depositor
Resolution (Å)	37.90 – 2.50 45.75 – 2.50	Depositor EDS
% Data completeness (in resolution range)	97.3 (37.90-2.50) 97.4 (45.75-2.50)	Depositor EDS
$R_{merge}$	0.05	Depositor
$R_{sym}$	(Not available)	Depositor
$\langle I/\sigma(I) \rangle$ <sup>1</sup>	1.50 (at 2.51Å)	Xtrriage
Refinement program	PHENIX 1.20.1_4487	Depositor
R, $R_{free}$	0.268 , 0.319 0.268 , 0.316	Depositor DCC
$R_{free}$ test set	2138 reflections (5.00%)	wwPDB-VP
Wilson B-factor (Å <sup>2</sup> )	68.7	Xtrriage
Anisotropy	0.687	Xtrriage
Bulk solvent $k_{sol}$ (e/Å <sup>3</sup> ), $B_{sol}$ (Å <sup>2</sup> )	0.27 , 64.7	EDS
L-test for twinning <sup>2</sup>	$\langle  L  \rangle = 0.51$ , $\langle L^2 \rangle = 0.34$	Xtrriage
Estimated twinning fraction	0.457 for h,-k,-h-l	Xtrriage
$F_o, F_c$ correlation	0.95	EDS
Total number of atoms	8439	wwPDB-VP
Average B, all atoms (Å <sup>2</sup> )	92.0	wwPDB-VP

Xtrriage's analysis on translational NCS is as follows: *The largest off-origin peak in the Patterson function is 6.32% of the height of the origin peak. No significant pseudotranslation is detected.*

<sup>1</sup>Intensities estimated from amplitudes.

<sup>2</sup>Theoretical values of  $\langle |L| \rangle$ ,  $\langle L^2 \rangle$  for acentric reflections are 0.5, 0.333 respectively for untwinned datasets, and 0.375, 0.2 for perfectly twinned datasets.

## 5 Model quality [i](#)

### 5.1 Standard geometry [i](#)

Bond lengths and bond angles in the following residue types are not validated in this section: MYR, X56

The Z score for a bond length (or angle) is the number of standard deviations the observed value is removed from the expected value. A bond length (or angle) with  $|Z| > 5$  is considered an outlier worth inspection. RMSZ is the root-mean-square of all Z scores of the bond lengths (or angles).

Mol	Chain	Bond lengths		Bond angles	
		RMSZ	# Z  >5	RMSZ	# Z  >5
1	A	0.25	0/4142	0.43	0/5661
1	B	0.25	0/4330	0.42	0/5902
All	All	0.25	0/8472	0.42	0/11563

There are no bond length outliers.

There are no bond angle outliers.

There are no chirality outliers.

There are no planarity outliers.

### 5.2 Too-close contacts [i](#)

In the following table, the Non-H and H(model) columns list the number of non-hydrogen atoms and hydrogen atoms in the chain respectively. The H(added) column lists the number of hydrogen atoms added and optimized by MolProbity. The Clashes column lists the number of clashes within the asymmetric unit, whereas Symm-Clashes lists symmetry-related clashes.

Mol	Chain	Non-H	H(model)	H(added)	Clashes	Symm-Clashes
1	A	4061	0	3481	19	0
1	B	4246	0	3771	22	0
2	A	29	0	0	0	0
2	B	29	0	0	0	0
3	A	45	0	72	2	0
3	B	29	0	45	2	0
All	All	8439	0	7369	42	0

The all-atom clashscore is defined as the number of clashes found per 1000 atoms (including hydrogen atoms). The all-atom clashscore for this structure is 3.

All (42) close contacts within the same asymmetric unit are listed below, sorted by their clash



magnitude.

Atom-1	Atom-2	Interatomic distance (Å)	Clash overlap (Å)
1:B:412:THR:HG22	1:B:423:LEU:HD13	1.73	0.70
1:B:442:GLU:HA	1:B:445:ARG:HD2	1.79	0.64
1:B:139:LEU:HD21	1:B:158:ALA:HB2	1.83	0.59
1:B:218:ARG:HG2	3:B:603:MYR:H132	1.84	0.58
1:B:417:GLN:NE2	1:B:494:ASP:OD2	2.34	0.57
1:A:120:VAL:HG13	1:A:178:LEU:HD23	1.88	0.56
1:B:218:ARG:HE	1:B:222:ARG:HH11	1.54	0.56
1:B:22:LEU:HD13	3:B:602:MYR:H72	1.88	0.53
1:B:388:ILE:HD13	1:B:445:ARG:HB3	1.91	0.53
1:B:351:LYS:NZ	1:B:355:THR:OG1	2.40	0.51
1:A:75:CYS:HA	1:A:80:LEU:HD22	1.91	0.51
1:A:401:TYR:CZ	1:A:522:GLN:HG2	2.45	0.51
1:B:224:PRO:HD2	1:B:296:ASP:HB3	1.92	0.50
1:A:233:LYS:NZ	1:A:237:ASP:OD2	2.42	0.50
1:B:245:CYS:HA	1:B:253:CYS:HB2	1.94	0.50
1:B:426:VAL:HG21	1:B:460:LEU:HD13	1.93	0.50
1:A:249:ASP:N	1:A:249:ASP:OD1	2.43	0.49
1:A:458:ASN:HB2	1:A:484:ARG:HH22	1.78	0.48
1:A:312:SER:HB3	1:A:315:VAL:HG23	1.96	0.48
1:A:319:TYR:OH	1:A:358:GLU:OE2	2.20	0.48
1:A:296:ASP:OD1	1:A:297:GLU:N	2.47	0.47
1:B:214:TRP:CD1	1:B:343:VAL:HG11	2.50	0.47
1:A:155:LEU:HD23	1:A:284:LEU:HD21	1.97	0.46
1:B:241:VAL:HG22	1:B:256:ASP:HB3	1.98	0.46
3:A:602:MYR:H22	3:A:602:MYR:H52	1.57	0.46
1:B:195:LYS:O	1:B:199:LYS:HG2	2.16	0.45
1:A:218:ARG:HA	1:A:218:ARG:HD2	1.85	0.45
1:B:29:GLN:HG2	1:B:147:PRO:HA	1.98	0.45
1:A:22:LEU:HD13	3:A:603:MYR:H72	1.99	0.45
1:A:81:ARG:HE	1:A:88:ALA:HB3	1.82	0.44
1:B:61:ASN:HD22	1:B:64:LYS:HG3	1.81	0.44
1:A:213:ALA:HB1	1:A:347:LEU:HD11	1.99	0.44
1:A:123:MET:HB3	1:A:165:PHE:HE2	1.81	0.44
1:B:414:LYS:HA	1:B:493:VAL:HA	2.00	0.43
1:A:361:CYS:HA	1:A:366:PRO:HB3	2.00	0.43
1:A:342:SER:HB3	1:A:446:MET:HG2	2.01	0.42
1:A:67:HIS:CE1	1:A:251:LEU:HD12	2.55	0.42
1:B:218:ARG:O	1:B:222:ARG:HG2	2.20	0.41
1:B:342:SER:H	1:B:446:MET:HE1	1.84	0.41
1:B:356:THR:HG21	1:B:373:VAL:HG12	2.03	0.41
1:A:214:TRP:CD1	1:A:343:VAL:HG11	2.56	0.40

*Continued on next page...*

*Continued from previous page...*

Atom-1	Atom-2	Interatomic distance (Å)	Clash overlap (Å)
1:B:218:ARG:HA	1:B:218:ARG:HD2	1.91	0.40

There are no symmetry-related clashes.

## 5.3 Torsion angles [i](#)

### 5.3.1 Protein backbone [i](#)

In the following table, the Percentiles column shows the percent Ramachandran outliers of the chain as a percentile score with respect to all X-ray entries followed by that with respect to entries of similar resolution.

The Analysed column shows the number of residues for which the backbone conformation was analysed, and the total number of residues.

Mol	Chain	Analysed	Favoured	Allowed	Outliers	Percentiles
1	A	569/585 (97%)	546 (96%)	21 (4%)	2 (0%)	34 54
1	B	574/585 (98%)	554 (96%)	19 (3%)	1 (0%)	47 68
All	All	1143/1170 (98%)	1100 (96%)	40 (4%)	3 (0%)	41 61

All (3) Ramachandran outliers are listed below:

Mol	Chain	Res	Type
1	A	61	ASN
1	A	469	VAL
1	B	469	VAL

### 5.3.2 Protein sidechains [i](#)

In the following table, the Percentiles column shows the percent sidechain outliers of the chain as a percentile score with respect to all X-ray entries followed by that with respect to entries of similar resolution.

The Analysed column shows the number of residues for which the sidechain conformation was analysed, and the total number of residues.

Mol	Chain	Analysed	Rotameric	Outliers	Percentiles
1	A	362/511 (71%)	352 (97%)	10 (3%)	43 70
1	B	411/511 (80%)	402 (98%)	9 (2%)	52 77

*Continued on next page...*

*Continued from previous page...*

Mol	Chain	Analysed	Rotameric	Outliers	Percentiles
All	All	773/1022 (76%)	754 (98%)	19 (2%)	47 73

All (19) residues with a non-rotameric sidechain are listed below:

Mol	Chain	Res	Type
1	A	34	CYS
1	A	76	THR
1	A	244	GLU
1	A	292	GLU
1	A	302	LEU
1	A	361	CYS
1	A	369	CYS
1	A	401	TYR
1	A	477	CYS
1	A	567	CYS
1	B	101	CYS
1	B	246	CYS
1	B	250	LEU
1	B	279	CYS
1	B	334	TYR
1	B	336	ARG
1	B	415	VAL
1	B	448	CYS
1	B	571	GLU

Sometimes sidechains can be flipped to improve hydrogen bonding and reduce clashes. There are no such sidechains identified.

### 5.3.3 RNA [i](#)

There are no RNA molecules in this entry.

## 5.4 Non-standard residues in protein, DNA, RNA chains [i](#)

There are no non-standard protein/DNA/RNA residues in this entry.

## 5.5 Carbohydrates [i](#)

There are no monosaccharides in this entry.

## 5.6 Ligand geometry

7 ligands are modelled in this entry.

In the following table, the Counts columns list the number of bonds (or angles) for which Mogul statistics could be retrieved, the number of bonds (or angles) that are observed in the model and the number of bonds (or angles) that are defined in the Chemical Component Dictionary. The Link column lists molecule types, if any, to which the group is linked. The Z score for a bond length (or angle) is the number of standard deviations the observed value is removed from the expected value. A bond length (or angle) with  $|Z| > 2$  is considered an outlier worth inspection. RMSZ is the root-mean-square of all Z scores of the bond lengths (or angles).

Mol	Type	Chain	Res	Link	Bond lengths			Bond angles		
					Counts	RMSZ	# Z  > 2	Counts	RMSZ	# Z  > 2
2	X56	B	601	-	29,32,32	0.93	1 (3%)	29,46,46	0.96	2 (6%)
3	MYR	A	603	-	12,12,15	0.66	0	12,12,15	1.14	1 (8%)
3	MYR	A	604	-	15,15,15	0.65	0	15,15,15	0.88	0
3	MYR	B	603	-	15,15,15	0.65	0	15,15,15	1.00	0
3	MYR	B	602	-	12,12,15	0.71	0	12,12,15	1.03	0
3	MYR	A	602	-	15,15,15	0.64	0	15,15,15	0.93	0
2	X56	A	601	-	29,32,32	0.91	1 (3%)	29,46,46	0.94	1 (3%)

In the following table, the Chirals column lists the number of chiral outliers, the number of chiral centers analysed, the number of these observed in the model and the number defined in the Chemical Component Dictionary. Similar counts are reported in the Torsion and Rings columns. '-' means no outliers of that kind were identified.

Mol	Type	Chain	Res	Link	Chirals	Torsions	Rings
2	X56	B	601	-	-	5/13/46/46	0/4/4/4
3	MYR	A	603	-	-	5/10/10/13	-
3	MYR	A	604	-	-	5/13/13/13	-
3	MYR	B	603	-	-	4/13/13/13	-
3	MYR	B	602	-	-	5/10/10/13	-
3	MYR	A	602	-	-	8/13/13/13	-
2	X56	A	601	-	-	5/13/46/46	0/4/4/4

All (2) bond length outliers are listed below:

Mol	Chain	Res	Type	Atoms	Z	Observed(Å)	Ideal(Å)
2	B	601	X56	O3-C8	-2.94	1.22	1.30
2	A	601	X56	O3-C8	-2.87	1.22	1.30

All (4) bond angle outliers are listed below:

Mol	Chain	Res	Type	Atoms	Z	Observed(°)	Ideal(°)
2	A	601	X56	C2-C1-N1	-2.20	84.13	87.09
2	B	601	X56	C2-C1-N1	-2.19	84.14	87.09
3	A	603	MYR	C3-C2-C1	-2.09	109.21	114.47
2	B	601	X56	C14-C13-S3	2.03	122.84	120.12

There are no chirality outliers.

All (37) torsion outliers are listed below:

Mol	Chain	Res	Type	Atoms
2	A	601	X56	O4-C9-N2-C2
2	B	601	X56	O4-C9-N2-C2
2	A	601	X56	C10-C9-N2-C2
2	B	601	X56	C10-C9-N2-C2
3	A	604	MYR	C10-C11-C12-C13
3	B	603	MYR	C5-C6-C7-C8
3	A	602	MYR	C9-C10-C11-C12
3	B	602	MYR	C7-C8-C9-C10
3	A	602	MYR	C10-C11-C12-C13
3	A	604	MYR	C4-C5-C6-C7
3	A	604	MYR	C1-C2-C3-C4
3	A	603	MYR	C1-C2-C3-C4
3	B	602	MYR	C3-C4-C5-C6
3	A	603	MYR	C7-C8-C9-C10
3	B	603	MYR	C10-C11-C12-C13
3	B	603	MYR	C11-C10-C9-C8
3	A	604	MYR	C9-C10-C11-C12
3	B	603	MYR	C9-C10-C11-C12
3	A	602	MYR	C11-C12-C13-C14
3	A	602	MYR	C2-C3-C4-C5
3	A	602	MYR	C5-C6-C7-C8
3	A	602	MYR	C1-C2-C3-C4
2	B	601	X56	N1-C4-C8-O3
3	B	602	MYR	C2-C3-C4-C5
3	A	602	MYR	C4-C5-C6-C7
2	A	601	X56	C5-C7-S2-C11
2	A	601	X56	N1-C4-C8-O2
3	A	602	MYR	C6-C7-C8-C9
3	A	603	MYR	C5-C6-C7-C8
3	A	603	MYR	O1-C1-C2-C3
3	B	602	MYR	O2-C1-C2-C3
3	B	602	MYR	O1-C1-C2-C3
3	A	603	MYR	O2-C1-C2-C3
3	A	604	MYR	C5-C6-C7-C8

*Continued on next page...*

Continued from previous page...

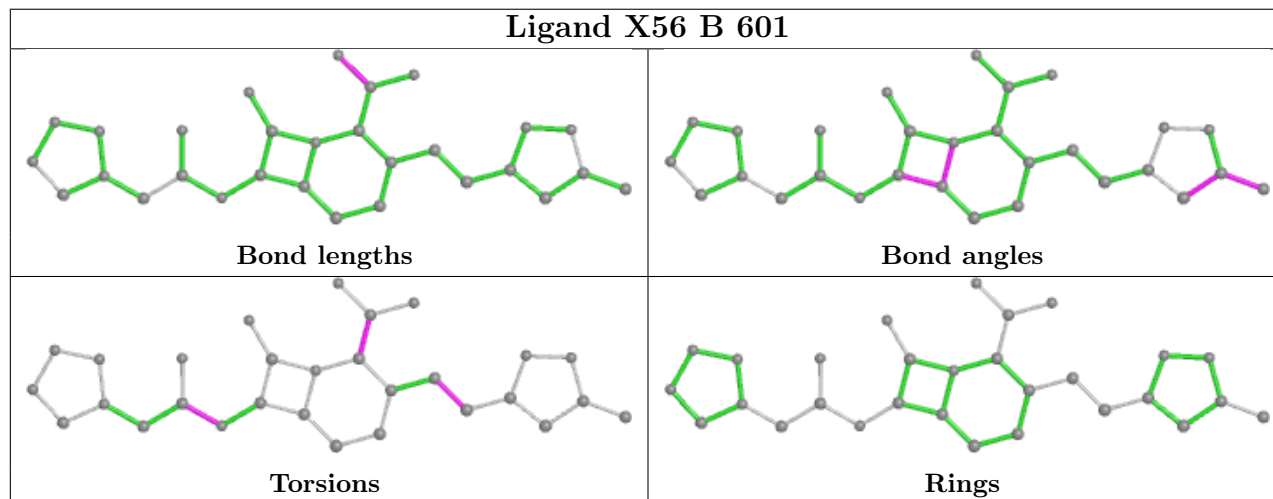
Mol	Chain	Res	Type	Atoms
2	A	601	X56	C5-C4-C8-O3
2	B	601	X56	C5-C4-C8-O3
2	B	601	X56	C5-C7-S2-C11

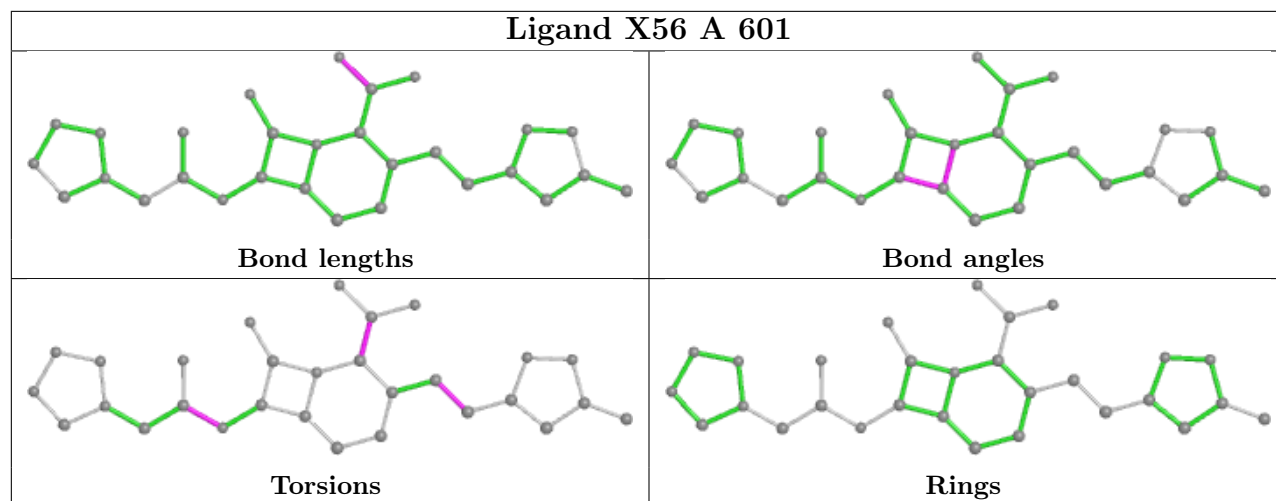
There are no ring outliers.

4 monomers are involved in 4 short contacts:

Mol	Chain	Res	Type	Clashes	Symm-Clashes
3	A	603	MYR	1	0
3	B	603	MYR	1	0
3	B	602	MYR	1	0
3	A	602	MYR	1	0

The following is a two-dimensional graphical depiction of Mogul quality analysis of bond lengths, bond angles, torsion angles, and ring geometry for all instances of the Ligand of Interest. In addition, ligands with molecular weight > 250 and outliers as shown on the validation Tables will also be included. For torsion angles, if less than 5% of the Mogul distribution of torsion angles is within 10 degrees of the torsion angle in question, then that torsion angle is considered an outlier. Any bond that is central to one or more torsion angles identified as an outlier by Mogul will be highlighted in the graph. For rings, the root-mean-square deviation (RMSD) between the ring in question and similar rings identified by Mogul is calculated over all ring torsion angles. If the average RMSD is greater than 60 degrees and the minimal RMSD between the ring in question and any Mogul-identified rings is also greater than 60 degrees, then that ring is considered an outlier. The outliers are highlighted in purple. The color gray indicates Mogul did not find sufficient equivalents in the CSD to analyse the geometry.





## 5.7 Other polymers [i](#)

There are no such residues in this entry.

## 5.8 Polymer linkage issues [i](#)

There are no chain breaks in this entry.

## 6 Fit of model and data

### 6.1 Protein, DNA and RNA chains

In the following table, the column labelled ‘#RSRZ > 2’ contains the number (and percentage) of RSRZ outliers, followed by percent RSRZ outliers for the chain as percentile scores relative to all X-ray entries and entries of similar resolution. The OWAB column contains the minimum, median, 95<sup>th</sup> percentile and maximum values of the occupancy-weighted average B-factor per residue. The column labelled ‘Q < 0.9’ lists the number of (and percentage) of residues with an average occupancy less than 0.9.

Mol	Chain	Analysed	<RSRZ>	#RSRZ>2	OWAB(Å <sup>2</sup> )	Q<0.9
1	A	573/585 (97%)	0.27	32 (5%) 24 25	65, 93, 116, 135	0
1	B	578/585 (98%)	0.24	25 (4%) 35 38	65, 93, 116, 130	0
All	All	1151/1170 (98%)	0.25	57 (4%) 28 30	65, 93, 116, 135	0

All (57) RSRZ outliers are listed below:

Mol	Chain	Res	Type	RSRZ
1	B	263	TYR	4.3
1	A	430	LEU	4.2
1	B	264	ILE	4.2
1	B	271	ILE	4.1
1	A	526	GLN	3.9
1	B	138	TYR	3.9
1	B	19	PHE	3.8
1	A	347	LEU	3.5
1	A	546	ALA	3.5
1	B	43	VAL	3.5
1	A	130	ASN	3.5
1	B	488	PHE	3.2
1	A	441	PRO	3.2
1	A	544	LEU	3.2
1	A	138	TYR	3.1
1	B	482	VAL	3.1
1	A	14	LEU	3.1
1	A	315	VAL	3.1
1	B	39	HIS	3.0
1	B	171	ALA	2.9
1	B	380	LEU	2.9
1	B	331	LEU	2.8
1	A	559	CYS	2.8
1	A	349	LEU	2.7

*Continued on next page...*



*Continued from previous page...*

Mol	Chain	Res	Type	RSRZ
1	A	384	PRO	2.7
1	B	235	VAL	2.6
1	B	223	PHE	2.5
1	A	551	PHE	2.5
1	A	92	ALA	2.5
1	B	453	LEU	2.5
1	A	11	PHE	2.5
1	A	311	GLU	2.5
1	B	24	LEU	2.5
1	A	30	TYR	2.4
1	B	161	TYR	2.4
1	B	305	LEU	2.4
1	A	234	LEU	2.4
1	B	269	ASP	2.4
1	A	350	ALA	2.2
1	A	509	PHE	2.2
1	A	149	PHE	2.2
1	A	381	VAL	2.2
1	A	128	HIS	2.2
1	A	134	PHE	2.2
1	A	123	MET	2.2
1	B	279	CYS	2.2
1	A	456	VAL	2.1
1	A	453	LEU	2.1
1	A	437	CYS	2.1
1	A	452	TYR	2.1
1	B	163	ALA	2.0
1	B	299	PRO	2.0
1	B	343	VAL	2.0
1	A	170	GLN	2.0
1	B	577	ALA	2.0
1	B	408	LEU	2.0
1	A	370	TYR	2.0

## 6.2 Non-standard residues in protein, DNA, RNA chains [i](#)

There are no non-standard protein/DNA/RNA residues in this entry.

## 6.3 Carbohydrates [i](#)

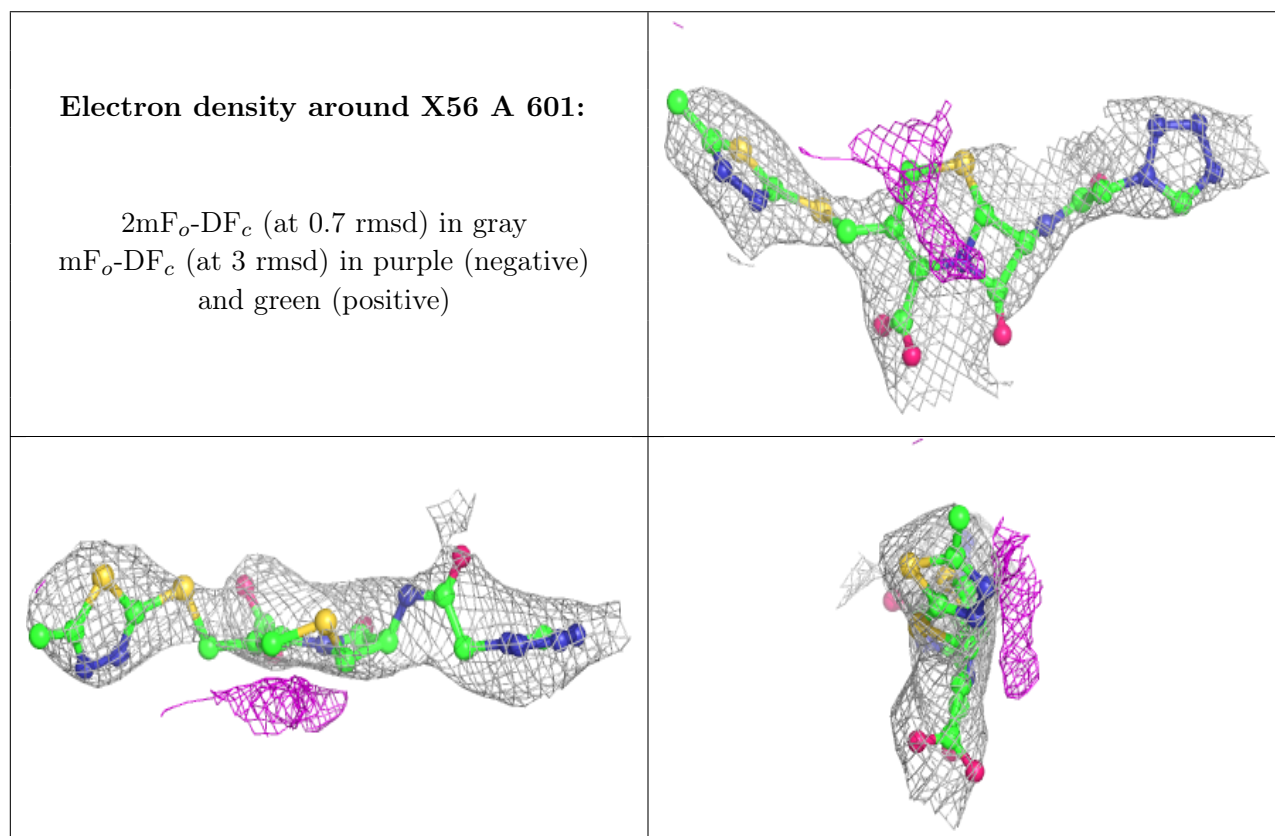
There are no monosaccharides in this entry.

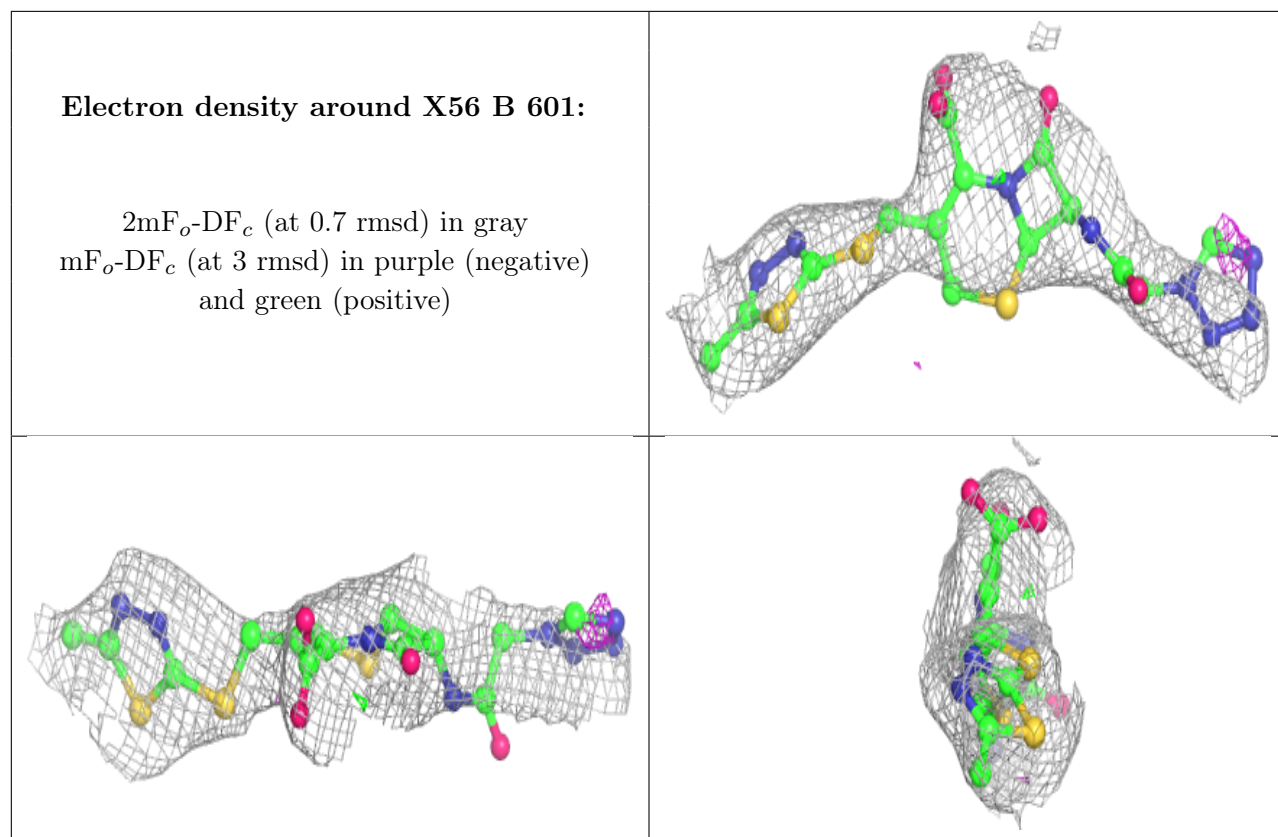
## 6.4 Ligands i

In the following table, the Atoms column lists the number of modelled atoms in the group and the number defined in the chemical component dictionary. The B-factors column lists the minimum, median, 95<sup>th</sup> percentile and maximum values of B factors of atoms in the group. The column labelled 'Q< 0.9' lists the number of atoms with occupancy less than 0.9.

Mol	Type	Chain	Res	Atoms	RSCC	RSR	B-factors(Å <sup>2</sup> )	Q<0.9
3	MYR	A	604	16/16	0.59	0.45	79,92,97,109	0
3	MYR	B	603	16/16	0.72	0.55	77,87,94,96	0
2	X56	A	601	29/29	0.78	0.27	83,90,105,107	29
2	X56	B	601	29/29	0.79	0.29	80,98,104,120	29
3	MYR	A	603	13/16	0.80	0.32	64,87,96,97	0
3	MYR	B	602	13/16	0.87	0.22	66,82,98,102	0
3	MYR	A	602	16/16	0.89	0.57	69,88,96,98	0

The following is a graphical depiction of the model fit to experimental electron density of all instances of the Ligand of Interest. In addition, ligands with molecular weight > 250 and outliers as shown on the geometry validation Tables will also be included. Each fit is shown from different orientation to approximate a three-dimensional view.





## 6.5 Other polymers [i](#)

There are no such residues in this entry.