



Full wwPDB X-ray Structure Validation Report ⓘ

Jul 27, 2021 – 12:02 AM EDT

PDB ID : 1Z03
Title : 2-Oxoquinoline 8-Monooxygenase Component: Active site Modulation by Rieske-[2Fe-2S] Center Oxidation/Reduction
Authors : Martins, B.M.; Svetlitchnaia, T.; Dobbek, H.
Deposited on : 2005-03-01
Resolution : 1.80 Å(reported)

This is a Full wwPDB X-ray Structure Validation Report for a publicly released PDB entry.

We welcome your comments at validation@mail.wwpdb.org

A user guide is available at

<https://www.wwpdb.org/validation/2017/XrayValidationReportHelp>

with specific help available everywhere you see the ⓘ symbol.

The following versions of software and data (see [references ⓘ](#)) were used in the production of this report:

MolProbity : 4.02b-467
Mogul : 1.8.5 (274361), CSD as541be (2020)
Xtrriage (Phenix) : **NOT EXECUTED**
EDS : **NOT EXECUTED**
Percentile statistics : 20191225.v01 (using entries in the PDB archive December 25th 2019)
Ideal geometry (proteins) : Engh & Huber (2001)
Ideal geometry (DNA, RNA) : Parkinson et al. (1996)
Validation Pipeline (wwPDB-VP) : 2.22

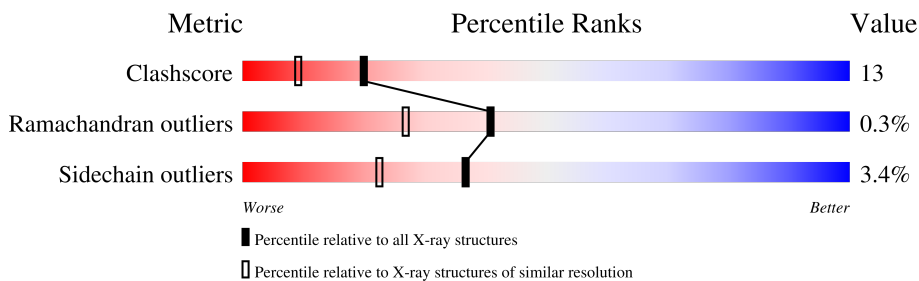
1 Overall quality at a glance i

The following experimental techniques were used to determine the structure:

X-RAY DIFFRACTION

The reported resolution of this entry is 1.80 Å.

Percentile scores (ranging between 0-100) for global validation metrics of the entry are shown in the following graphic. The table shows the number of entries on which the scores are based.



Metric	Whole archive (#Entries)	Similar resolution (#Entries, resolution range(Å))
Clashscore	141614	6793 (1.80-1.80)
Ramachandran outliers	138981	6697 (1.80-1.80)
Sidechain outliers	138945	6696 (1.80-1.80)

The table below summarises the geometric issues observed across the polymeric chains and their fit to the electron density. The red, orange, yellow and green segments of the lower bar indicate the fraction of residues that contain outliers for ≥ 3 , 2, 1 and 0 types of geometric quality criteria respectively. A grey segment represents the fraction of residues that are not modelled. The numeric value for each fraction is indicated below the corresponding segment, with a dot representing fractions $\leq 5\%$

Note EDS was not executed.

Mol	Chain	Length	Quality of chain
1	A	446	74% 19% . .
1	B	446	75% 19% . .
1	C	446	75% 19% . .
1	D	446	74% 19% . .
1	E	446	75% 19% . .
1	F	446	74% 20% . .

2 Entry composition [i](#)

There are 5 unique types of molecules in this entry. The entry contains 24453 atoms, of which 0 are hydrogens and 0 are deuteriums.

In the tables below, the ZeroOcc column contains the number of atoms modelled with zero occupancy, the AltConf column contains the number of residues with at least one atom in alternate conformation and the Trace column contains the number of residues modelled with at most 2 atoms.

- Molecule 1 is a protein called 2-oxo-1,2-dihydroquinoline 8-monooxygenase, oxygenase component.

Mol	Chain	Residues	Atoms					ZeroOcc	AltConf	Trace
1	A	427	Total	C	N	O	S	0	0	0
			3454	2211	592	635	16			
1	B	427	Total	C	N	O	S	0	0	0
			3454	2211	592	635	16			
1	C	427	Total	C	N	O	S	0	0	0
			3454	2211	592	635	16			
1	D	427	Total	C	N	O	S	0	0	0
			3454	2211	592	635	16			
1	E	427	Total	C	N	O	S	0	0	0
			3454	2211	592	635	16			
1	F	427	Total	C	N	O	S	0	0	0
			3454	2211	592	635	16			

- Molecule 2 is FE (III) ION (three-letter code: FE) (formula: Fe).

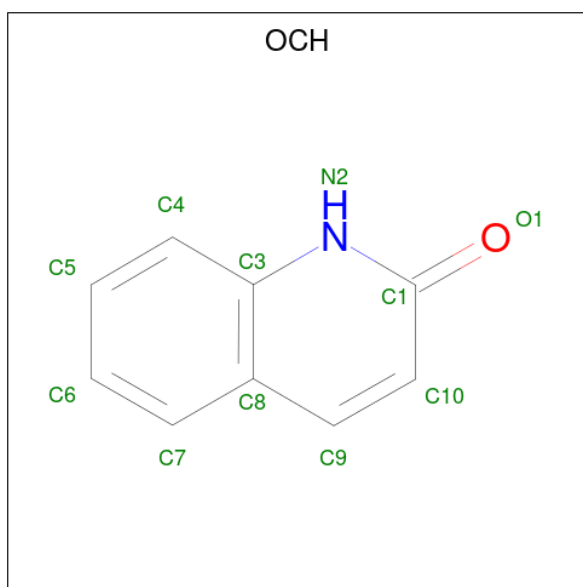
Mol	Chain	Residues	Atoms		ZeroOcc	AltConf
2	A	1	Total	Fe	0	0
			1	1		
2	B	1	Total	Fe	0	0
			1	1		
2	C	1	Total	Fe	0	0
			1	1		
2	D	1	Total	Fe	0	0
			1	1		
2	E	1	Total	Fe	0	0
			1	1		
2	F	1	Total	Fe	0	0
			1	1		

- Molecule 3 is FE2/S2 (INORGANIC) CLUSTER (three-letter code: FES) (formula: Fe₂S₂).



Mol	Chain	Residues	Atoms			ZeroOcc	AltConf
3	A	1	Total	Fe	S	0	0
			4	2	2		
3	B	1	Total	Fe	S	0	0
			4	2	2		
3	C	1	Total	Fe	S	0	0
			4	2	2		
3	D	1	Total	Fe	S	0	0
			4	2	2		
3	E	1	Total	Fe	S	0	0
			4	2	2		
3	F	1	Total	Fe	S	0	0
			4	2	2		

- Molecule 4 is QUINOLIN-2(1H)-ONE (three-letter code: OCH) (formula: C₉H₇NO).



Mol	Chain	Residues	Atoms				ZeroOcc	AltConf
4	A	1	Total	C	N	O	0	0
			11	9	1	1		
4	B	1	Total	C	N	O	0	0
			11	9	1	1		
4	C	1	Total	C	N	O	0	0
			11	9	1	1		
4	D	1	Total	C	N	O	0	0
			11	9	1	1		
4	E	1	Total	C	N	O	0	0
			11	9	1	1		
4	F	1	Total	C	N	O	0	0
			11	9	1	1		

- Molecule 5 is water.

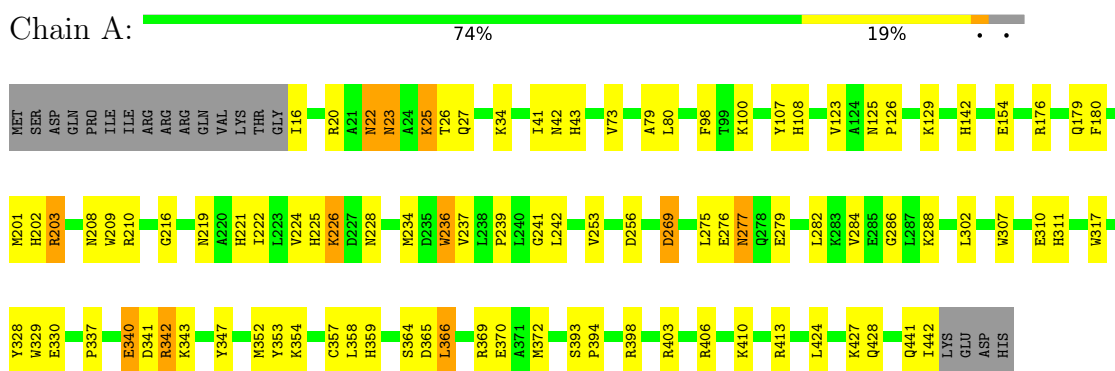
Mol	Chain	Residues	Atoms		ZeroOcc	AltConf
5	A	632	Total	O	0	0
			632	632		
5	B	611	Total	O	0	0
			611	611		
5	C	590	Total	O	0	0
			590	590		
5	D	638	Total	O	0	0
			638	638		
5	E	562	Total	O	0	0
			562	562		
5	F	600	Total	O	0	0
			600	600		

3 Residue-property plots [i](#)

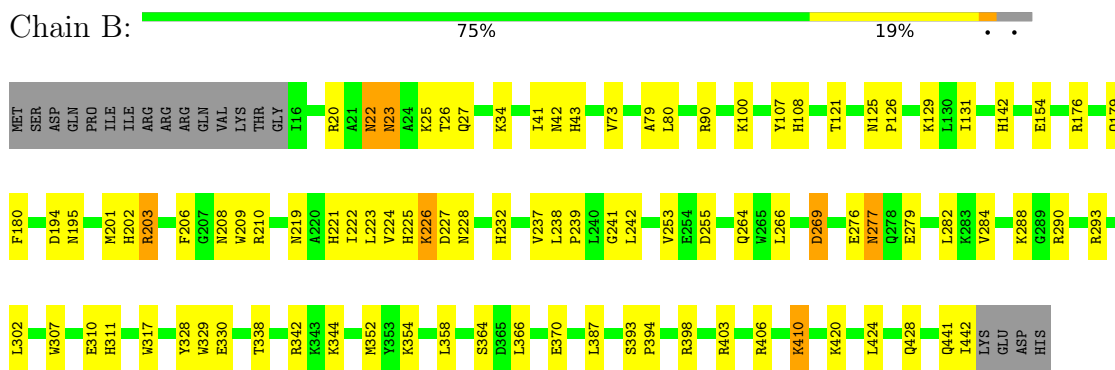
These plots are drawn for all protein, RNA, DNA and oligosaccharide chains in the entry. The first graphic for a chain summarises the proportions of the various outlier classes displayed in the second graphic. The second graphic shows the sequence view annotated by issues in geometry. Residues are color-coded according to the number of geometric quality criteria for which they contain at least one outlier: green = 0, yellow = 1, orange = 2 and red = 3 or more. Stretches of 2 or more consecutive residues without any outlier are shown as a green connector. Residues present in the sample, but not in the model, are shown in grey.

Note EDS was not executed.

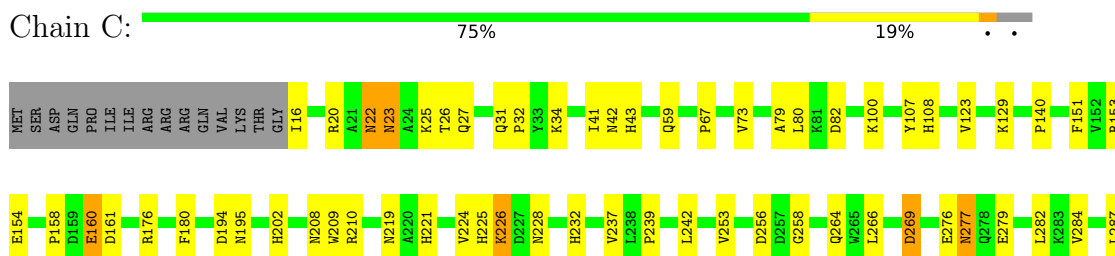
- Molecule 1: 2-oxo-1,2-dihydroquinoline 8-monooxygenase, oxygenase component

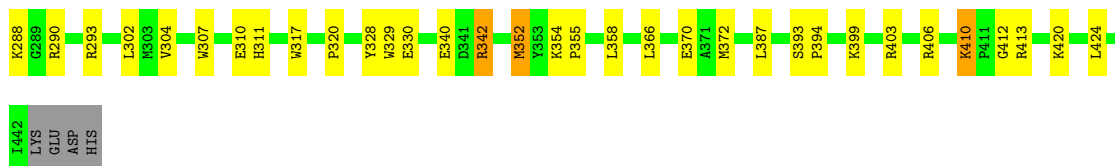


- Molecule 1: 2-oxo-1,2-dihydroquinoline 8-monooxygenase, oxygenase component



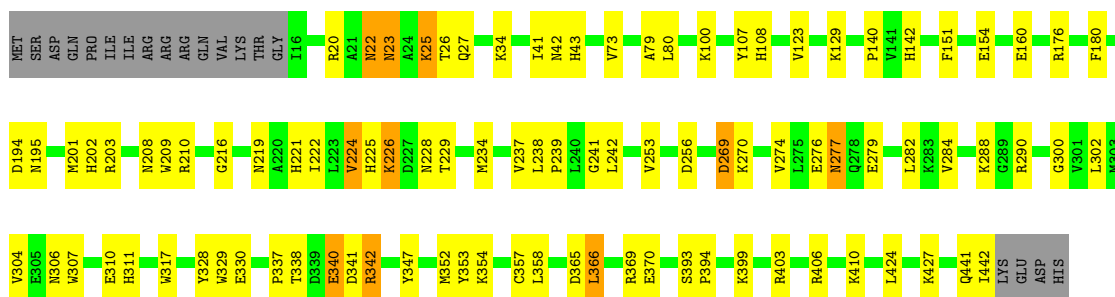
- Molecule 1: 2-oxo-1,2-dihydroquinoline 8-monooxygenase, oxygenase component





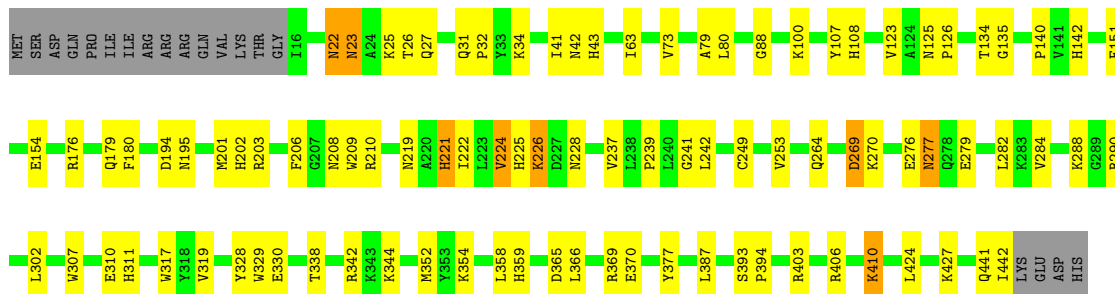
- Molecule 1: 2-oxo-1,2-dihydroquinoline 8-monooxygenase, oxygenase component

Chain D: 74% 19%



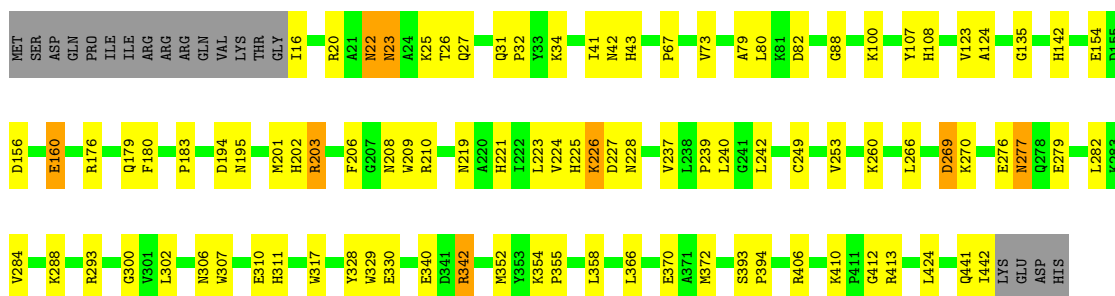
- Molecule 1: 2-oxo-1,2-dihydroquinoline 8-monooxygenase, oxygenase component

Chain E: 75% 19%



- Molecule 1: 2-oxo-1,2-dihydroquinoline 8-monooxygenase, oxygenase component

Chain F: 74% 20%



4 Data and refinement statistics

Xtrriage (Phenix) and EDS were not executed - this section is therefore incomplete.

Property	Value	Source
Space group	P 21 21 21	Depositor
Cell constants a, b, c, α , β , γ	104.53Å 166.94Å 173.43Å 90.00° 90.00° 90.00°	Depositor
Resolution (Å)	20.00 – 1.80	Depositor
% Data completeness (in resolution range)	98.2 (20.00-1.80)	Depositor
R_{merge}	(Not available)	Depositor
R_{sym}	(Not available)	Depositor
Refinement program	CNS	Depositor
R, R_{free}	0.200 , 0.240	Depositor
Estimated twinning fraction	No twinning to report.	Xtrriage
Total number of atoms	24453	wwPDB-VP
Average B, all atoms (Å ²)	24.0	wwPDB-VP

5 Model quality [i](#)

5.1 Standard geometry [i](#)

Bond lengths and bond angles in the following residue types are not validated in this section: FE, FES, OCH

The Z score for a bond length (or angle) is the number of standard deviations the observed value is removed from the expected value. A bond length (or angle) with $|Z| > 5$ is considered an outlier worth inspection. RMSZ is the root-mean-square of all Z scores of the bond lengths (or angles).

Mol	Chain	Bond lengths		Bond angles	
		RMSZ	# Z >5	RMSZ	# Z >5
1	A	0.36	0/3560	0.65	2/4853 (0.0%)
1	B	0.35	0/3560	0.63	0/4853
1	C	0.35	0/3560	0.63	0/4853
1	D	0.37	0/3560	0.65	1/4853 (0.0%)
1	E	0.36	0/3560	0.63	1/4853 (0.0%)
1	F	0.35	0/3560	0.63	1/4853 (0.0%)
All	All	0.36	0/21360	0.64	5/29118 (0.0%)

There are no bond length outliers.

All (5) bond angle outliers are listed below:

Mol	Chain	Res	Type	Atoms	Z	Observed(°)	Ideal(°)
1	A	203	ARG	NE-CZ-NH1	-9.94	115.33	120.30
1	A	203	ARG	NE-CZ-NH2	6.89	123.75	120.30
1	D	342	ARG	NE-CZ-NH1	-5.72	117.44	120.30
1	F	88	GLY	N-CA-C	5.66	127.24	113.10
1	E	88	GLY	N-CA-C	5.22	126.15	113.10

There are no chirality outliers.

There are no planarity outliers.

5.2 Too-close contacts [i](#)

In the following table, the Non-H and H(model) columns list the number of non-hydrogen atoms and hydrogen atoms in the chain respectively. The H(added) column lists the number of hydrogen atoms added and optimized by MolProbity. The Clashes column lists the number of clashes within the asymmetric unit, whereas Symm-Clashes lists symmetry-related clashes.

Mol	Chain	Non-H	H(model)	H(added)	Clashes	Symm-Clashes
1	A	3454	0	3307	94	0
1	B	3454	0	3307	87	0
1	C	3454	0	3307	83	0
1	D	3454	0	3307	95	0
1	E	3454	0	3307	80	0
1	F	3454	0	3307	87	0
2	A	1	0	0	0	0
2	B	1	0	0	0	0
2	C	1	0	0	0	0
2	D	1	0	0	0	0
2	E	1	0	0	0	0
2	F	1	0	0	0	0
3	A	4	0	0	1	0
3	B	4	0	0	1	0
3	C	4	0	0	1	0
3	D	4	0	0	1	0
3	E	4	0	0	1	0
3	F	4	0	0	1	0
4	A	11	0	7	2	0
4	B	11	0	7	2	0
4	C	11	0	7	3	0
4	D	11	0	7	3	0
4	E	11	0	7	2	0
4	F	11	0	7	2	0
5	A	632	0	0	20	0
5	B	611	0	0	19	0
5	C	590	0	0	17	0
5	D	638	0	0	25	0
5	E	562	0	0	12	0
5	F	600	0	0	13	0
All	All	24453	0	19884	513	0

The all-atom clashscore is defined as the number of clashes found per 1000 atoms (including hydrogen atoms). The all-atom clashscore for this structure is 13.

All (513) close contacts within the same asymmetric unit are listed below, sorted by their clash magnitude.

Atom-1	Atom-2	Interatomic distance (Å)	Clash overlap (Å)
1:F:225:HIS:HD1	1:F:228:ASN:HD21	1.02	1.02
1:E:225:HIS:HD1	1:E:228:ASN:HD21	1.07	0.99
1:C:232:HIS:HB2	5:C:5184:HOH:O	1.66	0.95
1:A:22:ASN:HD22	1:A:22:ASN:H	1.14	0.95

Continued on next page...

Continued from previous page...

Atom-1	Atom-2	Interatomic distance (Å)	Clash overlap (Å)
1:A:225:HIS:HD1	1:A:228:ASN:HD21	1.06	0.95
1:D:225:HIS:HD1	1:D:228:ASN:HD21	1.09	0.94
1:E:22:ASN:HD22	1:E:22:ASN:H	1.12	0.94
1:C:225:HIS:HD1	1:C:228:ASN:HD21	1.10	0.93
1:B:225:HIS:HD1	1:B:228:ASN:HD21	1.08	0.92
1:F:22:ASN:HD22	1:F:22:ASN:H	1.17	0.92
1:D:208:ASN:HD21	1:D:210:ARG:HE	1.19	0.88
1:C:22:ASN:HD22	1:C:22:ASN:H	1.14	0.88
1:D:22:ASN:H	1:D:22:ASN:HD22	1.19	0.87
1:E:208:ASN:HD21	1:E:210:ARG:HE	1.20	0.87
1:B:22:ASN:H	1:B:22:ASN:HD22	1.20	0.86
1:F:208:ASN:HD21	1:F:210:ARG:HE	1.23	0.86
1:B:208:ASN:HD21	1:B:210:ARG:HE	1.22	0.85
1:D:221:HIS:O	1:D:224:VAL:HG22	1.76	0.83
1:F:240:LEU:HD22	5:F:5182:HOH:O	1.75	0.83
1:C:256:ASP:HB3	5:C:5168:HOH:O	1.79	0.81
1:C:208:ASN:HD21	1:C:210:ARG:HE	1.27	0.81
1:A:225:HIS:HD1	1:A:228:ASN:ND2	1.78	0.81
1:A:208:ASN:HD21	1:A:210:ARG:HE	1.27	0.81
1:D:370:GLU:HG2	1:F:424:LEU:HD21	1.64	0.80
1:E:43:HIS:HE1	1:E:406:ARG:H	1.27	0.80
1:F:43:HIS:HE1	1:F:406:ARG:H	1.27	0.79
1:F:225:HIS:HD1	1:F:228:ASN:ND2	1.80	0.79
1:B:43:HIS:HE1	1:B:406:ARG:H	1.27	0.78
1:E:225:HIS:HD1	1:E:228:ASN:ND2	1.80	0.78
1:F:208:ASN:ND2	1:F:210:ARG:HE	1.82	0.77
1:A:43:HIS:HE1	1:A:406:ARG:H	1.31	0.77
1:E:43:HIS:CE1	1:E:406:ARG:H	2.02	0.77
1:C:43:HIS:HE1	1:C:406:ARG:H	1.31	0.76
1:D:43:HIS:HE1	1:D:406:ARG:H	1.33	0.76
1:D:274:VAL:HG11	1:F:124:ALA:HB1	1.66	0.76
1:D:208:ASN:ND2	1:D:210:ARG:HE	1.82	0.75
1:E:23:ASN:ND2	1:E:26:THR:H	1.83	0.75
1:A:43:HIS:CE1	1:A:406:ARG:H	2.04	0.75
1:B:208:ASN:ND2	1:B:210:ARG:HE	1.84	0.75
1:E:208:ASN:ND2	1:E:210:ARG:HE	1.85	0.75
1:F:43:HIS:CE1	1:F:406:ARG:H	2.05	0.75
1:A:256:ASP:HB3	5:A:4926:HOH:O	1.86	0.75
1:B:43:HIS:CE1	1:B:406:ARG:H	2.04	0.75
1:D:43:HIS:CE1	1:D:406:ARG:H	2.04	0.75
1:E:221:HIS:O	1:E:224:VAL:HG22	1.88	0.74

Continued on next page...

Continued from previous page...

Atom-1	Atom-2	Interatomic distance (Å)	Clash overlap (Å)
1:B:225:HIS:HD1	1:B:228:ASN:ND2	1.84	0.74
1:B:225:HIS:HB2	5:B:4919:HOH:O	1.86	0.73
1:B:424:LEU:HD21	1:C:370:GLU:HG2	1.70	0.73
1:C:208:ASN:ND2	1:C:210:ARG:HE	1.85	0.73
1:F:23:ASN:ND2	1:F:26:THR:H	1.85	0.73
1:B:23:ASN:ND2	1:B:26:THR:H	1.87	0.73
1:D:337:PRO:HD2	1:D:341:ASP:OD1	1.89	0.72
1:C:225:HIS:HD1	1:C:228:ASN:ND2	1.87	0.71
1:A:370:GLU:HG2	1:C:424:LEU:HD21	1.73	0.70
1:D:225:HIS:HD1	1:D:228:ASN:ND2	1.86	0.70
1:C:23:ASN:ND2	1:C:26:THR:H	1.89	0.70
1:A:424:LEU:HD21	1:B:370:GLU:HG2	1.74	0.70
1:C:43:HIS:CE1	1:C:406:ARG:H	2.10	0.70
1:D:23:ASN:ND2	1:D:26:THR:H	1.91	0.69
1:E:22:ASN:HD22	1:E:22:ASN:N	1.90	0.69
1:A:337:PRO:HD2	1:A:341:ASP:OD1	1.93	0.68
1:A:311:HIS:HD2	5:A:5049:HOH:O	1.76	0.68
1:A:208:ASN:ND2	1:A:210:ARG:HE	1.90	0.68
1:D:424:LEU:HD21	1:E:370:GLU:HG2	1.74	0.68
1:F:156:ASP:HB3	5:F:4619:HOH:O	1.93	0.68
1:C:22:ASN:HD22	1:C:22:ASN:N	1.92	0.67
1:A:23:ASN:ND2	1:A:26:THR:H	1.92	0.67
1:B:221:HIS:O	1:B:224:VAL:HG23	1.95	0.67
1:C:108:HIS:HB2	3:C:500:FES:S1	2.34	0.67
1:A:236:TRP:O	1:A:286:GLY:HA3	1.95	0.66
1:E:42:ASN:HD21	1:E:154:GLU:H	1.44	0.66
1:B:226:LYS:HD3	1:B:227:ASP:OD2	1.96	0.66
1:C:342:ARG:HG3	1:C:342:ARG:HH11	1.60	0.65
1:E:342:ARG:HH11	1:E:342:ARG:HG3	1.61	0.65
1:A:34:LYS:HD3	5:A:5098:HOH:O	1.97	0.65
1:C:330:GLU:HG2	1:C:358:LEU:HD22	1.77	0.65
1:C:342:ARG:HH11	1:C:342:ARG:CG	2.09	0.64
1:C:42:ASN:HD21	1:C:154:GLU:H	1.46	0.64
1:F:42:ASN:HD21	1:F:154:GLU:H	1.45	0.64
1:D:42:ASN:HD21	1:D:154:GLU:H	1.46	0.64
1:F:288:LYS:HD2	5:F:5061:HOH:O	1.98	0.64
1:C:221:HIS:O	1:C:224:VAL:HG23	1.98	0.63
1:A:42:ASN:HD21	1:A:154:GLU:H	1.46	0.63
1:A:108:HIS:HB2	3:A:500:FES:S1	2.38	0.63
1:D:20:ARG:HD2	1:D:22:ASN:HD21	1.64	0.63
1:F:226:LYS:HD3	1:F:227:ASP:OD2	1.99	0.62

Continued on next page...

Continued from previous page...

Atom-1	Atom-2	Interatomic distance (Å)	Clash overlap (Å)
1:A:342:ARG:HG3	1:A:342:ARG:HH11	1.63	0.62
1:B:22:ASN:HD22	1:B:22:ASN:N	1.95	0.62
1:B:238:LEU:HD11	5:B:4872:HOH:O	2.00	0.62
1:F:221:HIS:O	1:F:224:VAL:HG23	1.99	0.62
1:A:342:ARG:HH11	1:A:342:ARG:CG	2.13	0.61
1:E:424:LEU:HD21	1:F:370:GLU:HG2	1.82	0.61
1:C:342:ARG:HG3	1:C:342:ARG:NH1	2.15	0.61
1:F:282:LEU:HD13	5:F:5182:HOH:O	1.99	0.61
1:B:290:ARG:HB3	5:B:4859:HOH:O	2.01	0.61
1:D:403:ARG:HD3	5:D:4752:HOH:O	1.99	0.61
1:B:142:HIS:HD2	5:B:4723:HOH:O	1.84	0.60
1:F:176:ARG:HD3	1:F:179:GLN:NE2	2.16	0.60
1:B:342:ARG:HG3	1:B:342:ARG:HH11	1.66	0.60
1:C:16:ILE:N	5:C:5175:HOH:O	2.33	0.60
1:D:274:VAL:HG13	1:D:274:VAL:O	2.01	0.60
1:B:238:LEU:HD21	5:B:4919:HOH:O	2.01	0.60
1:E:221:HIS:O	1:E:224:VAL:CG2	2.48	0.60
1:F:342:ARG:CG	1:F:342:ARG:HH11	2.14	0.60
1:D:311:HIS:HD2	5:D:5066:HOH:O	1.83	0.60
1:B:42:ASN:HD21	1:B:154:GLU:H	1.48	0.60
1:C:290:ARG:HD3	5:C:4813:HOH:O	2.01	0.60
1:D:270:LYS:HE3	5:D:4980:HOH:O	2.02	0.60
1:E:22:ASN:H	1:E:22:ASN:ND2	1.92	0.60
1:B:226:LYS:HB2	1:B:226:LYS:NZ	2.16	0.60
1:A:176:ARG:HD3	1:A:179:GLN:NE2	2.17	0.60
1:F:203:ARG:NH2	5:F:4778:HOH:O	2.33	0.59
1:A:221:HIS:O	1:A:224:VAL:HG23	2.02	0.59
1:A:237:VAL:HG23	1:A:288:LYS:O	2.02	0.59
1:A:73:VAL:HG13	5:A:4946:HOH:O	2.02	0.59
1:E:410:LYS:HB2	1:E:410:LYS:NZ	2.18	0.59
1:A:16:ILE:N	5:A:4954:HOH:O	2.36	0.59
1:D:237:VAL:HG23	1:D:288:LYS:O	2.03	0.59
1:D:238:LEU:HD11	5:D:5096:HOH:O	2.02	0.59
1:A:330:GLU:HG2	1:A:358:LEU:HD22	1.85	0.59
1:B:338:THR:C	1:B:342:ARG:NH1	2.57	0.58
1:D:302:LEU:HD21	4:D:4603:OCH:H4	1.84	0.58
1:A:142:HIS:HD2	5:A:4626:HOH:O	1.85	0.58
1:E:142:HIS:HD2	5:E:4751:HOH:O	1.86	0.58
1:A:22:ASN:H	1:A:22:ASN:ND2	1.94	0.58
1:E:344:LYS:HE3	5:E:5149:HOH:O	2.03	0.58
1:D:108:HIS:HB2	3:D:500:FES:S1	2.42	0.58

Continued on next page...

Continued from previous page...

Atom-1	Atom-2	Interatomic distance (Å)	Clash overlap (Å)
1:A:23:ASN:HD22	1:A:26:THR:H	1.50	0.58
1:E:23:ASN:HD22	1:E:26:THR:H	1.50	0.58
1:E:253:VAL:HG12	5:E:4814:HOH:O	2.04	0.58
1:A:22:ASN:HD22	1:A:22:ASN:N	1.92	0.57
1:B:142:HIS:HE1	5:B:5024:HOH:O	1.88	0.57
1:F:410:LYS:HB2	1:F:410:LYS:NZ	2.20	0.57
1:B:201:MET:HG3	5:B:4888:HOH:O	2.04	0.57
1:B:23:ASN:HD22	1:B:26:THR:H	1.53	0.56
1:A:226:LYS:HB2	1:A:226:LYS:NZ	2.21	0.56
1:E:108:HIS:HB2	3:E:500:FES:S1	2.44	0.56
1:A:342:ARG:HG3	1:A:342:ARG:NH1	2.19	0.56
1:D:142:HIS:HD2	5:D:4637:HOH:O	1.88	0.56
1:D:288:LYS:HG2	5:D:4807:HOH:O	2.04	0.56
5:D:5058:HOH:O	1:F:442:ILE:HG21	2.05	0.56
1:E:239:PRO:HA	1:E:284:VAL:HG21	1.88	0.56
1:D:226:LYS:HB2	1:D:226:LYS:NZ	2.21	0.56
1:E:338:THR:C	1:E:342:ARG:NH1	2.59	0.56
1:E:311:HIS:HD2	5:E:4926:HOH:O	1.87	0.56
1:A:340:GLU:HB2	5:A:5059:HOH:O	2.06	0.56
1:C:226:LYS:HE2	5:C:5079:HOH:O	2.05	0.56
1:D:221:HIS:O	1:D:224:VAL:CG2	2.51	0.56
1:E:277:ASN:C	1:E:277:ASN:HD22	2.08	0.56
1:B:311:HIS:HE1	5:B:5060:HOH:O	1.88	0.56
1:A:234:MET:HE1	5:A:4774:HOH:O	2.05	0.55
1:D:234:MET:HE1	5:D:4898:HOH:O	2.07	0.55
1:A:366:LEU:HD21	5:A:4618:HOH:O	2.06	0.55
1:B:23:ASN:HD22	1:B:23:ASN:C	2.10	0.55
1:A:277:ASN:HD21	1:A:279:GLU:HB3	1.71	0.55
1:D:22:ASN:H	1:D:22:ASN:ND2	1.98	0.55
1:D:241:GLY:O	1:D:274:VAL:HG12	2.06	0.55
1:E:277:ASN:HD21	1:E:279:GLU:HB3	1.71	0.55
1:F:226:LYS:HB2	1:F:226:LYS:NZ	2.21	0.55
1:D:317:TRP:HB2	1:D:329:TRP:HB2	1.89	0.55
1:F:16:ILE:N	5:F:4987:HOH:O	2.40	0.55
1:C:239:PRO:HA	1:C:284:VAL:HG21	1.89	0.55
5:E:5056:HOH:O	1:F:226:LYS:HE3	2.05	0.55
1:F:79:ALA:C	1:F:80:LEU:HD12	2.26	0.54
1:B:108:HIS:HB2	3:B:500:FES:S1	2.47	0.54
1:D:23:ASN:HD22	1:D:26:THR:H	1.54	0.54
1:F:342:ARG:HH11	1:F:342:ARG:HG3	1.72	0.54
1:A:239:PRO:HA	1:A:284:VAL:HG21	1.88	0.54

Continued on next page...

Continued from previous page...

Atom-1	Atom-2	Interatomic distance (Å)	Clash overlap (Å)
1:F:239:PRO:HA	1:F:284:VAL:HG21	1.89	0.54
1:C:23:ASN:C	1:C:23:ASN:HD22	2.10	0.54
1:D:20:ARG:HD2	1:D:22:ASN:ND2	2.23	0.54
1:F:108:HIS:HB2	3:F:500:FES:S1	2.47	0.54
1:D:203:ARG:NH2	5:D:4623:HOH:O	2.40	0.54
1:F:372:MET:HE3	5:F:5169:HOH:O	2.06	0.54
1:E:317:TRP:HB2	1:E:329:TRP:HB2	1.89	0.54
1:D:399:LYS:O	1:D:403:ARG:HG3	2.08	0.54
1:D:23:ASN:HD22	1:D:23:ASN:C	2.12	0.53
1:D:410:LYS:HB2	1:D:410:LYS:NZ	2.23	0.53
1:A:424:LEU:HG	5:B:4804:HOH:O	2.07	0.53
1:E:219:ASN:HB3	1:E:242:LEU:HB2	1.90	0.53
1:D:25:LYS:NZ	5:D:5217:HOH:O	2.41	0.53
1:F:22:ASN:H	1:F:22:ASN:ND2	1.97	0.53
1:C:269:ASP:OD1	1:C:269:ASP:N	2.41	0.53
1:B:277:ASN:C	1:B:277:ASN:HD22	2.11	0.53
1:C:79:ALA:C	1:C:80:LEU:HD12	2.28	0.53
1:E:225:HIS:ND1	1:E:228:ASN:ND2	2.55	0.53
1:F:23:ASN:HD22	1:F:26:THR:H	1.54	0.53
1:A:23:ASN:HD22	1:A:23:ASN:C	2.12	0.53
1:A:256:ASP:HB2	5:A:5094:HOH:O	2.08	0.53
1:A:410:LYS:HB2	1:A:410:LYS:NZ	2.22	0.53
1:D:41:ILE:O	1:D:42:ASN:HB2	2.08	0.53
1:F:20:ARG:HD2	1:F:22:ASN:HD21	1.74	0.53
1:F:22:ASN:HD22	1:F:22:ASN:N	1.96	0.53
1:F:342:ARG:HG3	1:F:342:ARG:NH1	2.24	0.53
1:A:277:ASN:C	1:A:277:ASN:HD22	2.12	0.52
1:B:277:ASN:HD21	1:B:279:GLU:HB3	1.72	0.52
1:D:330:GLU:HG2	1:D:358:LEU:HD22	1.92	0.52
1:B:276:GLU:HG3	1:B:282:LEU:O	2.10	0.52
1:B:410:LYS:HB2	1:B:410:LYS:NZ	2.24	0.52
1:F:42:ASN:ND2	1:F:154:GLU:H	2.07	0.52
1:F:142:HIS:HD2	5:F:4632:HOH:O	1.92	0.52
1:F:276:GLU:HG3	1:F:282:LEU:O	2.10	0.52
1:A:288:LYS:HD2	5:A:4872:HOH:O	2.09	0.52
1:A:413:ARG:HG3	5:B:4924:HOH:O	2.08	0.52
1:C:307:TRP:CE2	4:C:4602:OCH:H7	2.45	0.52
1:F:330:GLU:HG2	1:F:358:LEU:HD22	1.91	0.52
1:B:410:LYS:HB2	1:B:410:LYS:HZ2	1.74	0.52
1:A:203:ARG:HH12	1:A:359:HIS:CE1	2.28	0.52
1:D:27:GLN:HE21	1:D:34:LYS:NZ	2.08	0.52

Continued on next page...

Continued from previous page...

Atom-1	Atom-2	Interatomic distance (Å)	Clash overlap (Å)
1:E:330:GLU:HG2	1:E:358:LEU:HD22	1.92	0.52
1:B:269:ASP:OD1	1:B:269:ASP:N	2.42	0.51
1:E:237:VAL:C	5:E:4768:HOH:O	2.48	0.51
1:C:277:ASN:HD21	1:C:279:GLU:HB3	1.75	0.51
1:D:365:ASP:O	1:D:369:ARG:HG3	2.10	0.51
1:F:202:HIS:HA	1:F:328:TYR:O	2.09	0.51
1:B:311:HIS:HD2	5:B:4604:HOH:O	1.91	0.51
1:C:277:ASN:C	1:C:277:ASN:HD22	2.13	0.51
1:D:239:PRO:HA	1:D:284:VAL:HG21	1.92	0.51
1:E:27:GLN:HE21	1:E:34:LYS:NZ	2.08	0.51
1:D:176:ARG:HA	5:D:4741:HOH:O	2.10	0.51
1:D:269:ASP:OD1	1:D:269:ASP:N	2.42	0.51
1:E:276:GLU:HG3	1:E:282:LEU:O	2.10	0.51
1:B:219:ASN:HB3	1:B:242:LEU:HB2	1.92	0.51
1:C:41:ILE:O	1:C:42:ASN:HB2	2.11	0.51
1:E:226:LYS:HB2	1:E:226:LYS:NZ	2.26	0.51
1:F:41:ILE:O	1:F:42:ASN:HB2	2.11	0.51
1:F:317:TRP:HB2	1:F:329:TRP:HB2	1.92	0.51
1:E:100:LYS:HE3	5:E:4996:HOH:O	2.10	0.51
1:C:23:ASN:HD22	1:C:26:THR:H	1.55	0.51
1:D:277:ASN:HD21	1:D:279:GLU:HB3	1.75	0.51
1:A:347:TYR:HA	5:A:4833:HOH:O	2.11	0.51
1:C:372:MET:HE3	5:C:5147:HOH:O	2.10	0.51
1:D:338:THR:C	1:D:342:ARG:HH11	2.14	0.51
1:A:225:HIS:ND1	1:A:228:ASN:ND2	2.55	0.50
1:D:219:ASN:HB3	1:D:242:LEU:HB2	1.93	0.50
1:E:342:ARG:HG3	1:E:342:ARG:NH1	2.26	0.50
1:A:20:ARG:HD2	1:A:22:ASN:HD21	1.77	0.50
1:B:203:ARG:NH2	5:B:5148:HOH:O	2.43	0.50
1:B:338:THR:C	1:B:342:ARG:HH12	2.15	0.50
1:C:342:ARG:CG	1:C:342:ARG:NH1	2.73	0.50
1:C:276:GLU:HG3	1:C:282:LEU:O	2.11	0.50
1:F:237:VAL:HG23	1:F:288:LYS:O	2.12	0.50
1:B:202:HIS:HA	1:B:328:TYR:O	2.11	0.50
1:D:238:LEU:HD13	5:D:4780:HOH:O	2.10	0.50
1:E:237:VAL:HG23	1:E:288:LYS:O	2.11	0.50
1:F:277:ASN:C	1:F:277:ASN:HD22	2.13	0.50
1:A:441:GLN:O	1:A:442:ILE:HB	2.12	0.50
1:A:42:ASN:ND2	1:A:154:GLU:H	2.10	0.50
1:D:277:ASN:C	1:D:277:ASN:HD22	2.15	0.50
1:D:340:GLU:HB2	5:D:5113:HOH:O	2.12	0.50

Continued on next page...

Continued from previous page...

Atom-1	Atom-2	Interatomic distance (Å)	Clash overlap (Å)
1:F:219:ASN:HB3	1:F:242:LEU:HB2	1.94	0.50
1:B:255:ASP:HB2	5:B:4999:HOH:O	2.11	0.50
1:B:344:LYS:HE3	5:D:5227:HOH:O	2.12	0.50
1:C:22:ASN:H	1:C:22:ASN:ND2	1.93	0.50
1:D:306:ASN:OD1	1:D:310:GLU:HA	2.12	0.50
1:F:311:HIS:HD2	5:F:4810:HOH:O	1.95	0.50
1:F:302:LEU:HD21	4:F:4605:OCH:H4	1.94	0.49
1:A:343:LYS:HD2	5:A:5076:HOH:O	2.12	0.49
1:A:403:ARG:HG3	5:A:4746:HOH:O	2.12	0.49
1:D:424:LEU:HG	5:E:4959:HOH:O	2.13	0.49
1:E:302:LEU:HD21	4:E:4604:OCH:H4	1.94	0.49
1:B:239:PRO:HA	1:B:284:VAL:HG21	1.95	0.49
1:F:23:ASN:HD22	1:F:23:ASN:C	2.16	0.49
1:F:180:PHE:HZ	1:F:253:VAL:HG21	1.77	0.49
1:F:307:TRP:CE2	4:F:4605:OCH:H7	2.47	0.49
1:B:41:ILE:O	1:B:42:ASN:HB2	2.13	0.49
1:B:121:THR:HA	1:B:131:ILE:HD13	1.95	0.49
1:E:203:ARG:HH12	1:E:359:HIS:CE1	2.31	0.49
1:D:238:LEU:HD21	5:D:5096:HOH:O	2.12	0.49
1:A:222:ILE:HD11	1:A:241:GLY:HA2	1.94	0.48
1:B:79:ALA:C	1:B:80:LEU:HD12	2.33	0.48
1:E:290:ARG:HB3	5:E:4768:HOH:O	2.13	0.48
1:C:23:ASN:HB2	5:C:5123:HOH:O	2.12	0.48
1:C:420:LYS:NZ	5:C:5181:HOH:O	2.37	0.48
1:E:269:ASP:OD1	1:E:269:ASP:N	2.46	0.48
1:D:100:LYS:HE3	5:D:4968:HOH:O	2.13	0.48
1:E:27:GLN:HE21	1:E:34:LYS:HZ1	1.62	0.48
1:C:20:ARG:HD2	1:C:22:ASN:HD21	1.78	0.48
1:E:42:ASN:ND2	1:E:154:GLU:H	2.09	0.48
1:C:140:PRO:HD2	1:C:151:PHE:HB3	1.96	0.48
1:A:310:GLU:O	1:A:311:HIS:HB2	2.14	0.48
1:A:41:ILE:O	1:A:42:ASN:HB2	2.12	0.48
1:D:274:VAL:CG1	1:F:124:ALA:HB1	2.39	0.48
1:F:160:GLU:H	1:F:160:GLU:CD	2.14	0.48
1:B:237:VAL:HG23	1:B:288:LYS:O	2.13	0.48
1:F:412:GLY:O	1:F:413:ARG:HD3	2.14	0.48
1:B:223:LEU:O	1:B:226:LYS:HG2	2.14	0.47
1:C:219:ASN:HB3	1:C:242:LEU:HB2	1.96	0.47
1:C:311:HIS:HD2	5:C:4763:HOH:O	1.98	0.47
1:E:79:ALA:C	1:E:80:LEU:HD12	2.35	0.47
1:A:25:LYS:O	1:A:25:LYS:HD3	2.14	0.47

Continued on next page...

Continued from previous page...

Atom-1	Atom-2	Interatomic distance (Å)	Clash overlap (Å)
1:C:237:VAL:HG23	1:C:288:LYS:O	2.14	0.47
1:D:393:SER:HB2	1:D:394:PRO:CD	2.45	0.47
1:A:79:ALA:C	1:A:80:LEU:HD12	2.35	0.47
1:F:269:ASP:OD1	1:F:269:ASP:N	2.48	0.47
1:B:302:LEU:HD21	4:B:4601:OCH:H4	1.96	0.47
1:C:226:LYS:HB2	1:C:226:LYS:NZ	2.29	0.47
1:D:274:VAL:HG11	1:F:124:ALA:CB	2.39	0.47
1:D:290:ARG:HG2	5:D:4780:HOH:O	2.14	0.47
1:D:310:GLU:O	1:D:311:HIS:HB2	2.14	0.47
1:E:23:ASN:HD22	1:E:23:ASN:C	2.17	0.47
1:B:73:VAL:HG11	1:B:100:LYS:O	2.15	0.47
1:E:338:THR:C	1:E:342:ARG:HH12	2.18	0.47
1:F:277:ASN:HD21	1:F:279:GLU:HB3	1.79	0.47
1:F:410:LYS:HB2	1:F:410:LYS:HZ2	1.79	0.47
1:A:317:TRP:HB2	1:A:329:TRP:HB2	1.96	0.47
1:B:393:SER:HB2	1:B:394:PRO:CD	2.45	0.47
1:C:403:ARG:HD3	5:C:5151:HOH:O	2.15	0.47
1:E:27:GLN:NE2	1:E:34:LYS:HZ3	2.12	0.47
1:F:183:PRO:HB3	5:F:4886:HOH:O	2.15	0.47
1:A:269:ASP:OD1	1:A:269:ASP:N	2.47	0.47
1:C:160:GLU:H	1:C:160:GLU:CD	2.16	0.47
1:C:302:LEU:HD21	4:C:4602:OCH:H4	1.97	0.47
1:A:427:LYS:HD2	1:B:206:PHE:CD1	2.50	0.47
1:B:317:TRP:HB2	1:B:329:TRP:HB2	1.96	0.47
1:C:317:TRP:HB2	1:C:329:TRP:HB2	1.96	0.47
1:F:20:ARG:HD2	1:F:22:ASN:ND2	2.30	0.47
1:F:223:LEU:O	1:F:226:LYS:HG2	2.15	0.47
1:C:180:PHE:HZ	1:C:253:VAL:HG21	1.80	0.47
1:D:427:LYS:HD2	1:E:206:PHE:CD1	2.49	0.46
1:E:41:ILE:O	1:E:42:ASN:HB2	2.15	0.46
1:F:393:SER:HB2	1:F:394:PRO:CD	2.45	0.46
1:A:302:LEU:HD21	4:A:4600:OCH:H4	1.98	0.46
1:C:202:HIS:HA	1:C:328:TYR:O	2.14	0.46
1:D:42:ASN:ND2	1:D:154:GLU:H	2.10	0.46
1:D:22:ASN:HD22	1:D:22:ASN:N	1.95	0.46
1:D:304:VAL:HG21	4:D:4603:OCH:C5	2.46	0.46
1:E:307:TRP:CE2	4:E:4604:OCH:H7	2.51	0.46
1:D:202:HIS:HA	1:D:328:TYR:O	2.16	0.46
1:E:27:GLN:NE2	1:E:34:LYS:NZ	2.64	0.46
1:E:264:GLN:NE2	1:E:393:SER:OG	2.46	0.46
1:B:330:GLU:HG2	1:B:358:LEU:HD22	1.96	0.46

Continued on next page...

Continued from previous page...

Atom-1	Atom-2	Interatomic distance (Å)	Clash overlap (Å)
1:E:176:ARG:HD3	1:E:179:GLN:NE2	2.31	0.46
1:E:203:ARG:NH1	1:E:359:HIS:CE1	2.84	0.46
1:C:410:LYS:NZ	1:C:410:LYS:HB2	2.31	0.46
1:C:209:TRP:CG	1:C:320:PRO:HG3	2.51	0.46
1:D:208:ASN:ND2	1:D:210:ARG:HB2	2.30	0.46
1:A:224:VAL:HG12	1:A:364:SER:HB3	1.98	0.46
1:B:342:ARG:HG3	1:B:342:ARG:NH1	2.30	0.46
1:C:42:ASN:ND2	1:C:154:GLU:H	2.10	0.46
1:B:410:LYS:NZ	1:B:410:LYS:CB	2.79	0.46
1:C:73:VAL:HG11	1:C:100:LYS:O	2.16	0.46
1:C:290:ARG:HG2	5:C:5137:HOH:O	2.15	0.46
1:D:410:LYS:NZ	1:D:410:LYS:CB	2.79	0.46
1:E:222:ILE:HD11	1:E:241:GLY:HA2	1.98	0.46
1:A:410:LYS:NZ	1:A:410:LYS:CB	2.79	0.45
1:C:399:LYS:O	1:C:403:ARG:HG3	2.16	0.45
1:F:194:ASP:O	1:F:195:ASN:HB2	2.16	0.45
1:E:410:LYS:NZ	1:E:410:LYS:CB	2.79	0.45
1:A:201:MET:CE	1:A:354:LYS:HE3	2.46	0.45
1:B:194:ASP:O	1:B:195:ASN:HB2	2.16	0.45
1:B:201:MET:HE1	1:B:354:LYS:HE3	1.98	0.45
1:A:403:ARG:HD2	5:A:5222:HOH:O	2.15	0.45
1:B:180:PHE:HZ	1:B:253:VAL:HG21	1.81	0.45
1:D:222:ILE:HD11	1:D:241:GLY:HA2	1.97	0.45
1:D:307:TRP:CE2	4:D:4603:OCH:H7	2.52	0.45
1:A:180:PHE:HZ	1:A:253:VAL:HG21	1.80	0.45
1:D:225:HIS:ND1	1:D:228:ASN:ND2	2.59	0.45
1:C:266:LEU:HD12	1:C:293:ARG:HA	1.99	0.45
1:E:393:SER:HB2	1:E:394:PRO:CD	2.47	0.45
1:A:203:ARG:NH2	5:A:4875:HOH:O	2.45	0.45
1:E:73:VAL:HG11	1:E:100:LYS:O	2.17	0.45
1:A:27:GLN:NE2	1:A:34:LYS:HZ1	2.15	0.45
1:B:394:PRO:O	1:B:398:ARG:HG3	2.18	0.44
1:D:27:GLN:HE21	1:D:34:LYS:HZ1	1.65	0.44
1:D:201:MET:CE	1:D:354:LYS:HE3	2.47	0.44
1:E:202:HIS:HA	1:E:328:TYR:O	2.17	0.44
1:E:203:ARG:NH1	1:E:359:HIS:HE1	2.15	0.44
1:A:203:ARG:NH1	1:A:359:HIS:HE1	2.15	0.44
1:C:158:PRO:HG2	1:C:161:ASP:OD1	2.18	0.44
1:F:225:HIS:ND1	1:F:228:ASN:ND2	2.53	0.44
1:B:264:GLN:NE2	1:B:393:SER:OG	2.48	0.44
1:D:73:VAL:HG11	1:D:100:LYS:O	2.17	0.44

Continued on next page...

Continued from previous page...

Atom-1	Atom-2	Interatomic distance (Å)	Clash overlap (Å)
1:F:201:MET:HE1	1:F:354:LYS:HE3	1.99	0.44
1:A:27:GLN:HE21	1:A:34:LYS:NZ	2.16	0.44
1:A:394:PRO:O	1:A:398:ARG:HG3	2.17	0.44
1:C:31:GLN:HB3	1:C:32:PRO:HD3	1.98	0.44
1:F:67:PRO:HB2	1:F:82:ASP:HB3	1.99	0.44
1:B:428:GLN:NE2	5:B:4875:HOH:O	2.49	0.44
1:D:256:ASP:HA	5:D:4961:HOH:O	2.18	0.44
1:F:310:GLU:O	1:F:311:HIS:HB2	2.18	0.44
1:B:22:ASN:ND2	1:B:387:LEU:H	2.16	0.44
1:C:310:GLU:O	1:C:311:HIS:HB2	2.18	0.44
1:D:140:PRO:HD2	1:D:151:PHE:HB3	1.99	0.44
1:D:410:LYS:HB2	1:D:410:LYS:HZ2	1.81	0.44
1:A:203:ARG:NH1	1:A:359:HIS:CE1	2.85	0.44
1:A:276:GLU:HG3	1:A:282:LEU:O	2.18	0.44
1:A:365:ASP:O	1:A:369:ARG:HG3	2.18	0.44
1:B:42:ASN:ND2	1:B:154:GLU:H	2.12	0.44
1:E:310:GLU:O	1:E:311:HIS:HB2	2.18	0.44
1:C:288:LYS:HE3	1:C:288:LYS:HA	2.00	0.44
1:D:79:ALA:C	1:D:80:LEU:HD12	2.38	0.44
1:D:366:LEU:HD21	5:D:4634:HOH:O	2.17	0.44
5:D:5058:HOH:O	1:F:442:ILE:CG2	2.65	0.44
1:E:180:PHE:HZ	1:E:253:VAL:HG21	1.83	0.44
1:C:20:ARG:HD2	1:C:22:ASN:ND2	2.33	0.43
1:C:100:LYS:HE3	5:C:5089:HOH:O	2.17	0.43
1:C:393:SER:HB2	1:C:394:PRO:CD	2.47	0.43
1:D:160:GLU:H	1:D:160:GLU:CD	2.21	0.43
1:C:258:GLY:HA2	5:C:4831:HOH:O	2.18	0.43
1:E:249:CYS:HA	1:E:270:LYS:HB3	1.99	0.43
1:E:403:ARG:HG3	5:E:4927:HOH:O	2.18	0.43
1:F:266:LEU:HD12	1:F:293:ARG:HA	2.00	0.43
1:B:209:TRP:CE2	1:B:210:ARG:HG3	2.53	0.43
1:B:224:VAL:HG12	1:B:364:SER:HB3	1.99	0.43
1:E:22:ASN:N	1:E:22:ASN:ND2	2.61	0.43
1:F:372:MET:HB3	1:F:372:MET:HE2	1.84	0.43
1:B:330:GLU:OE1	1:B:358:LEU:HA	2.19	0.43
1:F:260:LYS:HD3	5:F:4976:HOH:O	2.19	0.43
1:B:222:ILE:HD11	1:B:241:GLY:HA2	2.01	0.43
1:B:441:GLN:O	1:B:442:ILE:HB	2.18	0.43
1:C:27:GLN:HE21	1:C:34:LYS:NZ	2.17	0.43
1:D:209:TRP:CE2	1:D:210:ARG:HG3	2.54	0.43
1:F:208:ASN:ND2	1:F:210:ARG:H	2.17	0.43

Continued on next page...

Continued from previous page...

Atom-1	Atom-2	Interatomic distance (Å)	Clash overlap (Å)
1:F:441:GLN:O	1:F:442:ILE:HB	2.19	0.43
1:B:20:ARG:HD2	1:B:22:ASN:HD21	1.83	0.43
1:D:27:GLN:NE2	1:D:34:LYS:HZ3	2.16	0.43
1:D:270:LYS:HE2	5:D:4970:HOH:O	2.19	0.43
1:B:310:GLU:O	1:B:311:HIS:HB2	2.19	0.43
1:C:194:ASP:O	1:C:195:ASN:HB2	2.18	0.43
1:F:27:GLN:HE21	1:F:34:LYS:NZ	2.15	0.43
1:A:209:TRP:CE2	1:A:210:ARG:HG3	2.54	0.43
1:D:180:PHE:HZ	1:D:253:VAL:HG21	1.83	0.43
1:E:441:GLN:O	1:E:442:ILE:HB	2.18	0.43
1:A:20:ARG:HD2	1:A:22:ASN:ND2	2.34	0.43
1:A:100:LYS:HE3	5:A:4949:HOH:O	2.19	0.43
1:A:307:TRP:CE2	4:A:4600:OCH:H7	2.54	0.43
1:E:134:THR:OG1	1:E:135:GLY:N	2.52	0.43
1:F:249:CYS:HA	1:F:270:LYS:HB3	2.01	0.43
1:F:306:ASN:OD1	1:F:310:GLU:HA	2.19	0.43
1:A:73:VAL:HG11	1:A:100:LYS:O	2.19	0.42
1:A:372:MET:HB3	1:A:372:MET:HE2	1.90	0.42
1:A:393:SER:HB2	1:A:394:PRO:CD	2.49	0.42
1:C:42:ASN:HD22	1:C:153:ARG:HA	1.84	0.42
1:E:209:TRP:CE2	1:E:210:ARG:HG3	2.54	0.42
1:D:441:GLN:O	1:D:442:ILE:HB	2.20	0.42
1:A:176:ARG:HA	5:A:4830:HOH:O	2.19	0.42
1:E:365:ASP:O	1:E:369:ARG:HG3	2.19	0.42
1:E:194:ASP:O	1:E:195:ASN:HB2	2.19	0.42
1:F:201:MET:CE	1:F:354:LYS:HE3	2.48	0.42
1:A:237:VAL:HG22	1:A:286:GLY:C	2.40	0.42
1:A:410:LYS:CB	1:A:410:LYS:HZ3	2.33	0.42
1:C:352:MET:HE1	5:C:5119:HOH:O	2.20	0.42
1:F:31:GLN:HB3	1:F:32:PRO:HD3	2.01	0.42
1:B:420:LYS:NZ	5:B:5032:HOH:O	2.38	0.42
1:B:403:ARG:HD2	5:B:4943:HOH:O	2.19	0.42
1:F:209:TRP:CE2	1:F:210:ARG:HG3	2.55	0.42
1:B:225:HIS:ND1	1:B:228:ASN:ND2	2.58	0.42
1:A:424:LEU:O	1:A:428:GLN:HG3	2.19	0.42
1:B:125:ASN:N	1:B:126:PRO:CD	2.83	0.42
1:B:226:LYS:O	1:B:232:HIS:HE1	2.02	0.42
1:B:307:TRP:CE2	4:B:4601:OCH:H7	2.55	0.42
1:B:420:LYS:HE2	5:B:4879:HOH:O	2.19	0.42
1:C:304:VAL:HG21	4:C:4602:OCH:C5	2.50	0.42
1:D:194:ASP:O	1:D:195:ASN:HB2	2.19	0.42

Continued on next page...

Continued from previous page...

Atom-1	Atom-2	Interatomic distance (Å)	Clash overlap (Å)
1:E:140:PRO:HD2	1:E:151:PHE:HB3	2.02	0.41
1:A:125:ASN:N	1:A:126:PRO:CD	2.83	0.41
1:A:201:MET:HE1	1:A:354:LYS:HE3	2.01	0.41
1:B:22:ASN:HB3	1:B:387:LEU:HD12	2.01	0.41
1:B:226:LYS:HB2	1:B:226:LYS:HZ2	1.84	0.41
1:E:31:GLN:N	1:E:32:PRO:CD	2.83	0.41
1:A:202:HIS:HA	1:A:328:TYR:O	2.20	0.41
1:B:201:MET:HE1	5:B:5173:HOH:O	2.19	0.41
1:C:208:ASN:ND2	1:C:210:ARG:H	2.19	0.41
1:C:208:ASN:ND2	1:C:210:ARG:HB2	2.35	0.41
1:A:226:LYS:HB2	1:A:226:LYS:HZ2	1.86	0.41
1:C:264:GLN:NE2	1:C:393:SER:OG	2.46	0.41
1:D:216:GLY:HA3	5:D:4685:HOH:O	2.21	0.41
1:F:203:ARG:O	1:F:203:ARG:HG2	2.21	0.41
1:B:90:ARG:HD3	5:B:4728:HOH:O	2.20	0.41
1:C:287:LEU:HG	5:C:4792:HOH:O	2.21	0.41
1:C:412:GLY:O	1:C:413:ARG:HD3	2.20	0.41
1:D:276:GLU:HG3	1:D:282:LEU:O	2.21	0.41
1:C:27:GLN:HE21	1:C:34:LYS:HZ1	1.68	0.41
1:D:347:TYR:HA	5:D:4863:HOH:O	2.19	0.41
1:E:125:ASN:N	1:E:126:PRO:CD	2.84	0.41
1:A:219:ASN:HB3	1:A:242:LEU:HB2	2.03	0.41
1:B:27:GLN:HE21	1:B:34:LYS:NZ	2.19	0.41
1:D:237:VAL:HG12	5:D:4958:HOH:O	2.19	0.41
1:E:427:LYS:HD2	1:F:206:PHE:CD1	2.56	0.41
1:A:98:PHE:CE2	1:B:282:LEU:HD21	2.56	0.41
1:B:176:ARG:HD3	1:B:179:GLN:NE2	2.36	0.41
1:B:201:MET:CE	1:B:354:LYS:HE3	2.51	0.41
1:D:27:GLN:NE2	1:D:34:LYS:NZ	2.69	0.41
1:D:201:MET:HE1	1:D:354:LYS:HE3	2.02	0.41
1:F:330:GLU:OE1	1:F:358:LEU:HA	2.21	0.41
1:C:209:TRP:CE2	1:C:210:ARG:HG3	2.56	0.41
1:E:237:VAL:N	5:E:4768:HOH:O	2.42	0.41
1:F:355:PRO:HA	5:F:5123:HOH:O	2.21	0.41
1:A:25:LYS:NZ	5:A:5170:HOH:O	2.48	0.40
1:E:63:ILE:HG23	1:E:319:VAL:HG12	2.02	0.40
1:C:59:GLN:NE2	5:C:4854:HOH:O	2.53	0.40
1:C:310:GLU:HG3	5:C:5088:HOH:O	2.22	0.40
1:D:288:LYS:HE2	1:D:288:LYS:HA	2.03	0.40
1:D:353:TYR:O	1:D:357:CYS:HB2	2.22	0.40
1:E:22:ASN:ND2	1:E:387:LEU:H	2.20	0.40

Continued on next page...

Continued from previous page...

Atom-1	Atom-2	Interatomic distance (Å)	Clash overlap (Å)
1:A:275:LEU:HD12	1:A:275:LEU:N	2.37	0.40
1:E:201:MET:CE	1:E:354:LYS:HE3	2.52	0.40
1:F:410:LYS:NZ	1:F:410:LYS:CB	2.83	0.40
1:A:353:TYR:O	1:A:357:CYS:HB2	2.21	0.40
1:B:208:ASN:HD21	1:B:210:ARG:NE	2.03	0.40
1:C:67:PRO:HB2	1:C:82:ASP:HB3	2.03	0.40
1:F:135:GLY:HA3	5:F:5063:HOH:O	2.20	0.40
1:A:216:GLY:HA3	5:A:4852:HOH:O	2.21	0.40
1:B:266:LEU:HD12	1:B:293:ARG:HA	2.02	0.40
1:C:22:ASN:ND2	1:C:387:LEU:H	2.20	0.40
1:C:31:GLN:N	1:C:32:PRO:CD	2.84	0.40
1:C:354:LYS:HB3	1:C:355:PRO:CD	2.51	0.40
1:D:274:VAL:O	1:D:274:VAL:CG1	2.67	0.40
1:D:311:HIS:HE1	5:D:4994:HOH:O	2.03	0.40
1:E:377:TYR:HB3	5:E:4963:HOH:O	2.21	0.40
1:F:73:VAL:HG11	1:F:100:LYS:O	2.21	0.40
1:F:288:LYS:HE3	1:F:288:LYS:HA	2.04	0.40

There are no symmetry-related clashes.

5.3 Torsion angles [i](#)

5.3.1 Protein backbone [i](#)

In the following table, the Percentiles column shows the percent Ramachandran outliers of the chain as a percentile score with respect to all X-ray entries followed by that with respect to entries of similar resolution.

The Analysed column shows the number of residues for which the backbone conformation was analysed, and the total number of residues.

Mol	Chain	Analysed	Favoured	Allowed	Outliers	Percentiles	
1	A	425/446 (95%)	402 (95%)	21 (5%)	2 (0%)	29	15
1	B	425/446 (95%)	403 (95%)	22 (5%)	0	100	100
1	C	425/446 (95%)	399 (94%)	25 (6%)	1 (0%)	47	33
1	D	425/446 (95%)	404 (95%)	19 (4%)	2 (0%)	29	15
1	E	425/446 (95%)	402 (95%)	22 (5%)	1 (0%)	47	33
1	F	425/446 (95%)	403 (95%)	20 (5%)	2 (0%)	29	15
All	All	2550/2676 (95%)	2413 (95%)	129 (5%)	8 (0%)	41	27

All (8) Ramachandran outliers are listed below:

Mol	Chain	Res	Type
1	A	236	TRP
1	D	123	VAL
1	A	123	VAL
1	E	123	VAL
1	F	123	VAL
1	C	123	VAL
1	F	300	GLY
1	D	300	GLY

5.3.2 Protein sidechains [i](#)

In the following table, the Percentiles column shows the percent sidechain outliers of the chain as a percentile score with respect to all X-ray entries followed by that with respect to entries of similar resolution.

The Analysed column shows the number of residues for which the sidechain conformation was analysed, and the total number of residues.

Mol	Chain	Analysed	Rotameric	Outliers	Percentiles	
1	A	373/392 (95%)	361 (97%)	12 (3%)	39	25
1	B	373/392 (95%)	361 (97%)	12 (3%)	39	25
1	C	373/392 (95%)	358 (96%)	15 (4%)	31	16
1	D	373/392 (95%)	360 (96%)	13 (4%)	36	21
1	E	373/392 (95%)	361 (97%)	12 (3%)	39	25
1	F	373/392 (95%)	360 (96%)	13 (4%)	36	21
All	All	2238/2352 (95%)	2161 (97%)	77 (3%)	37	22

All (77) residues with a non-rotameric sidechain are listed below:

Mol	Chain	Res	Type
1	A	22	ASN
1	A	23	ASN
1	A	25	LYS
1	A	107	TYR
1	A	129	LYS
1	A	226	LYS
1	A	269	ASP
1	A	277	ASN
1	A	340	GLU

Continued on next page...

Continued from previous page...

Mol	Chain	Res	Type
1	A	342	ARG
1	A	352	MET
1	A	366	LEU
1	B	22	ASN
1	B	23	ASN
1	B	25	LYS
1	B	107	TYR
1	B	129	LYS
1	B	203	ARG
1	B	226	LYS
1	B	269	ASP
1	B	277	ASN
1	B	352	MET
1	B	366	LEU
1	B	410	LYS
1	C	22	ASN
1	C	23	ASN
1	C	25	LYS
1	C	107	TYR
1	C	129	LYS
1	C	160	GLU
1	C	176	ARG
1	C	226	LYS
1	C	269	ASP
1	C	277	ASN
1	C	340	GLU
1	C	342	ARG
1	C	352	MET
1	C	366	LEU
1	C	410	LYS
1	D	22	ASN
1	D	23	ASN
1	D	25	LYS
1	D	107	TYR
1	D	129	LYS
1	D	224	VAL
1	D	226	LYS
1	D	229	THR
1	D	269	ASP
1	D	277	ASN
1	D	340	GLU
1	D	352	MET

Continued on next page...

Continued from previous page...

Mol	Chain	Res	Type
1	D	366	LEU
1	E	22	ASN
1	E	23	ASN
1	E	25	LYS
1	E	107	TYR
1	E	221	HIS
1	E	224	VAL
1	E	226	LYS
1	E	269	ASP
1	E	277	ASN
1	E	352	MET
1	E	366	LEU
1	E	410	LYS
1	F	22	ASN
1	F	23	ASN
1	F	25	LYS
1	F	107	TYR
1	F	160	GLU
1	F	203	ARG
1	F	226	LYS
1	F	269	ASP
1	F	277	ASN
1	F	340	GLU
1	F	342	ARG
1	F	352	MET
1	F	366	LEU

Sometimes sidechains can be flipped to improve hydrogen bonding and reduce clashes. All (123) such sidechains are listed below:

Mol	Chain	Res	Type
1	A	22	ASN
1	A	23	ASN
1	A	27	GLN
1	A	42	ASN
1	A	43	HIS
1	A	62	GLN
1	A	142	HIS
1	A	179	GLN
1	A	195	ASN
1	A	208	ASN
1	A	228	ASN
1	A	232	HIS

Continued on next page...

Continued from previous page...

Mol	Chain	Res	Type
1	A	264	GLN
1	A	277	ASN
1	A	278	GLN
1	A	311	HIS
1	A	346	GLN
1	A	359	HIS
1	A	374	ASN
1	A	428	GLN
1	A	441	GLN
1	B	22	ASN
1	B	23	ASN
1	B	27	GLN
1	B	42	ASN
1	B	43	HIS
1	B	62	GLN
1	B	142	HIS
1	B	179	GLN
1	B	195	ASN
1	B	208	ASN
1	B	228	ASN
1	B	232	HIS
1	B	264	GLN
1	B	277	ASN
1	B	278	GLN
1	B	311	HIS
1	B	346	GLN
1	B	359	HIS
1	B	374	ASN
1	B	428	GLN
1	B	441	GLN
1	C	22	ASN
1	C	23	ASN
1	C	27	GLN
1	C	42	ASN
1	C	43	HIS
1	C	59	GLN
1	C	62	GLN
1	C	142	HIS
1	C	179	GLN
1	C	195	ASN
1	C	208	ASN
1	C	228	ASN

Continued on next page...

Continued from previous page...

Mol	Chain	Res	Type
1	C	232	HIS
1	C	264	GLN
1	C	277	ASN
1	C	278	GLN
1	C	311	HIS
1	C	346	GLN
1	C	374	ASN
1	C	428	GLN
1	C	441	GLN
1	D	22	ASN
1	D	23	ASN
1	D	27	GLN
1	D	42	ASN
1	D	43	HIS
1	D	62	GLN
1	D	142	HIS
1	D	179	GLN
1	D	195	ASN
1	D	208	ASN
1	D	228	ASN
1	D	232	HIS
1	D	264	GLN
1	D	277	ASN
1	D	278	GLN
1	D	311	HIS
1	D	346	GLN
1	D	428	GLN
1	D	441	GLN
1	E	22	ASN
1	E	23	ASN
1	E	27	GLN
1	E	42	ASN
1	E	43	HIS
1	E	62	GLN
1	E	142	HIS
1	E	179	GLN
1	E	195	ASN
1	E	208	ASN
1	E	228	ASN
1	E	232	HIS
1	E	264	GLN
1	E	277	ASN

Continued on next page...

Continued from previous page...

Mol	Chain	Res	Type
1	E	278	GLN
1	E	311	HIS
1	E	346	GLN
1	E	359	HIS
1	E	374	ASN
1	E	428	GLN
1	E	441	GLN
1	F	22	ASN
1	F	23	ASN
1	F	27	GLN
1	F	42	ASN
1	F	43	HIS
1	F	59	GLN
1	F	62	GLN
1	F	142	HIS
1	F	179	GLN
1	F	195	ASN
1	F	208	ASN
1	F	228	ASN
1	F	232	HIS
1	F	264	GLN
1	F	277	ASN
1	F	278	GLN
1	F	311	HIS
1	F	346	GLN
1	F	359	HIS
1	F	441	GLN

5.3.3 RNA [i](#)

There are no RNA molecules in this entry.

5.4 Non-standard residues in protein, DNA, RNA chains [i](#)

There are no non-standard protein/DNA/RNA residues in this entry.

5.5 Carbohydrates [i](#)

There are no monosaccharides in this entry.

5.6 Ligand geometry

Of 18 ligands modelled in this entry, 6 are monoatomic - leaving 12 for Mogul analysis.

In the following table, the Counts columns list the number of bonds (or angles) for which Mogul statistics could be retrieved, the number of bonds (or angles) that are observed in the model and the number of bonds (or angles) that are defined in the Chemical Component Dictionary. The Link column lists molecule types, if any, to which the group is linked. The Z score for a bond length (or angle) is the number of standard deviations the observed value is removed from the expected value. A bond length (or angle) with $|Z| > 2$ is considered an outlier worth inspection. RMSZ is the root-mean-square of all Z scores of the bond lengths (or angles).

Mol	Type	Chain	Res	Link	Bond lengths			Bond angles		
					Counts	RMSZ	# Z > 2	Counts	RMSZ	# Z > 2
3	FES	D	500	1	0,4,4	0.00	-	-	-	-
4	OCH	C	4602	-	11,12,12	2.94	5 (45%)	14,16,16	1.90	3 (21%)
3	FES	A	500	1	0,4,4	0.00	-	-	-	-
4	OCH	E	4604	-	11,12,12	2.88	3 (27%)	14,16,16	1.92	3 (21%)
3	FES	E	500	1	0,4,4	0.00	-	-	-	-
3	FES	F	500	1	0,4,4	0.00	-	-	-	-
4	OCH	B	4601	-	11,12,12	2.87	5 (45%)	14,16,16	2.03	3 (21%)
4	OCH	F	4605	-	11,12,12	3.12	5 (45%)	14,16,16	1.91	3 (21%)
4	OCH	A	4600	-	11,12,12	3.07	5 (45%)	14,16,16	1.97	3 (21%)
3	FES	C	500	1	0,4,4	0.00	-	-	-	-
4	OCH	D	4603	-	11,12,12	2.98	4 (36%)	14,16,16	1.92	3 (21%)
3	FES	B	500	1	0,4,4	0.00	-	-	-	-

In the following table, the Chirals column lists the number of chiral outliers, the number of chiral centers analysed, the number of these observed in the model and the number defined in the Chemical Component Dictionary. Similar counts are reported in the Torsion and Rings columns. '-' means no outliers of that kind were identified.

Mol	Type	Chain	Res	Link	Chirals	Torsions	Rings
3	FES	D	500	1	-	-	0/1/1/1
4	OCH	C	4602	-	-	-	0/2/2/2
3	FES	A	500	1	-	-	0/1/1/1
4	OCH	E	4604	-	-	-	0/2/2/2
3	FES	E	500	1	-	-	0/1/1/1
3	FES	F	500	1	-	-	0/1/1/1
4	OCH	B	4601	-	-	-	0/2/2/2
4	OCH	F	4605	-	-	-	0/2/2/2
4	OCH	A	4600	-	-	-	0/2/2/2
3	FES	C	500	1	-	-	0/1/1/1
4	OCH	D	4603	-	-	-	0/2/2/2

Continued on next page...

Continued from previous page...

Mol	Type	Chain	Res	Link	Chirals	Torsions	Rings
3	FES	B	500	1	-	-	0/1/1/1

All (27) bond length outliers are listed below:

Mol	Chain	Res	Type	Atoms	Z	Observed(Å)	Ideal(Å)
4	F	4605	OCH	C1-N2	7.61	1.46	1.33
4	A	4600	OCH	C1-N2	7.42	1.46	1.33
4	D	4603	OCH	C1-N2	7.29	1.45	1.33
4	C	4602	OCH	C1-N2	7.22	1.45	1.33
4	E	4604	OCH	C1-N2	7.09	1.45	1.33
4	B	4601	OCH	C1-N2	7.03	1.45	1.33
4	F	4605	OCH	C3-N2	4.34	1.42	1.35
4	A	4600	OCH	C3-N2	4.17	1.42	1.35
4	B	4601	OCH	C3-N2	4.12	1.42	1.35
4	E	4604	OCH	C3-N2	3.83	1.41	1.35
4	D	4603	OCH	C3-N2	3.70	1.41	1.35
4	C	4602	OCH	C3-N2	3.70	1.41	1.35
4	C	4602	OCH	C9-C8	3.49	1.50	1.41
4	D	4603	OCH	C9-C8	3.46	1.50	1.41
4	E	4604	OCH	C9-C8	3.43	1.50	1.41
4	A	4600	OCH	C9-C8	3.26	1.49	1.41
4	F	4605	OCH	C9-C8	3.23	1.49	1.41
4	B	4601	OCH	C9-C8	3.00	1.49	1.41
4	F	4605	OCH	C8-C3	2.90	1.46	1.42
4	A	4600	OCH	C8-C3	2.80	1.46	1.42
4	D	4603	OCH	C8-C3	2.60	1.46	1.42
4	C	4602	OCH	C8-C3	2.36	1.45	1.42
4	B	4601	OCH	C8-C3	2.32	1.45	1.42
4	F	4605	OCH	C6-C5	2.16	1.43	1.38
4	C	4602	OCH	C6-C5	2.07	1.43	1.38
4	A	4600	OCH	C6-C5	2.07	1.43	1.38
4	B	4601	OCH	C6-C5	2.00	1.43	1.38

All (18) bond angle outliers are listed below:

Mol	Chain	Res	Type	Atoms	Z	Observed(°)	Ideal(°)
4	B	4601	OCH	C1-N2-C3	4.94	124.81	117.86
4	E	4604	OCH	C1-N2-C3	4.67	124.44	117.86
4	D	4603	OCH	C1-N2-C3	4.65	124.41	117.86
4	A	4600	OCH	C1-N2-C3	4.64	124.40	117.86
4	C	4602	OCH	C1-N2-C3	4.54	124.26	117.86
4	F	4605	OCH	C1-N2-C3	4.34	123.97	117.86

Continued on next page...

Continued from previous page...

Mol	Chain	Res	Type	Atoms	Z	Observed(°)	Ideal(°)
4	B	4601	OCH	C10-C1-N2	-4.11	114.26	123.31
4	A	4600	OCH	C10-C1-N2	-3.95	114.62	123.31
4	E	4604	OCH	C10-C1-N2	-3.93	114.65	123.31
4	F	4605	OCH	C10-C1-N2	-3.93	114.66	123.31
4	D	4603	OCH	C10-C1-N2	-3.90	114.73	123.31
4	C	4602	OCH	C10-C1-N2	-3.85	114.84	123.31
4	B	4601	OCH	C8-C3-N2	-2.97	118.33	122.41
4	A	4600	OCH	C8-C3-N2	-2.93	118.39	122.41
4	F	4605	OCH	C8-C3-N2	-2.83	118.53	122.41
4	C	4602	OCH	C8-C3-N2	-2.76	118.62	122.41
4	D	4603	OCH	C8-C3-N2	-2.73	118.66	122.41
4	E	4604	OCH	C8-C3-N2	-2.70	118.70	122.41

There are no chirality outliers.

There are no torsion outliers.

There are no ring outliers.

12 monomers are involved in 20 short contacts:

Mol	Chain	Res	Type	Clashes	Symm-Clashes
3	D	500	FES	1	0
4	C	4602	OCH	3	0
3	A	500	FES	1	0
4	E	4604	OCH	2	0
3	E	500	FES	1	0
3	F	500	FES	1	0
4	B	4601	OCH	2	0
4	F	4605	OCH	2	0
4	A	4600	OCH	2	0
3	C	500	FES	1	0
4	D	4603	OCH	3	0
3	B	500	FES	1	0

5.7 Other polymers [i](#)

There are no such residues in this entry.

5.8 Polymer linkage issues [i](#)

There are no chain breaks in this entry.

6 Fit of model and data

6.1 Protein, DNA and RNA chains

EDS was not executed - this section is therefore empty.

6.2 Non-standard residues in protein, DNA, RNA chains

EDS was not executed - this section is therefore empty.

6.3 Carbohydrates

EDS was not executed - this section is therefore empty.

6.4 Ligands

EDS was not executed - this section is therefore empty.

6.5 Other polymers

EDS was not executed - this section is therefore empty.