



Full wwPDB X-ray Structure Validation Report ⓘ

Jan 15, 2024 – 01:55 pm GMT

PDB ID : 6Z39
Title : Structure of recombinant human beta-glucocerebrosidase in complex with BODIPY functionalised epoxide activity based probe
Authors : Rowland, R.J.; Davies, G.J.
Deposited on : 2020-05-19
Resolution : 1.70 Å(reported)

This is a Full wwPDB X-ray Structure Validation Report for a publicly released PDB entry.

We welcome your comments at validation@mail.wwpdb.org

A user guide is available at

<https://www.wwpdb.org/validation/2017/XrayValidationReportHelp>

with specific help available everywhere you see the ⓘ symbol.

The types of validation reports are described at

<http://www.wwpdb.org/validation/2017/FAQs#types>.

The following versions of software and data (see [references ⓘ](#)) were used in the production of this report:

MolProbity : 4.02b-467
Mogul : 1.8.4, CSD as541be (2020)
Xtriage (Phenix) : 1.13
EDS : 2.36
buster-report : 1.1.7 (2018)
Percentile statistics : 20191225.v01 (using entries in the PDB archive December 25th 2019)
Refmac : 5.8.0158
CCP4 : 7.0.044 (Gargrove)
Ideal geometry (proteins) : Engh & Huber (2001)
Ideal geometry (DNA, RNA) : Parkinson et al. (1996)
Validation Pipeline (wwPDB-VP) : 2.36

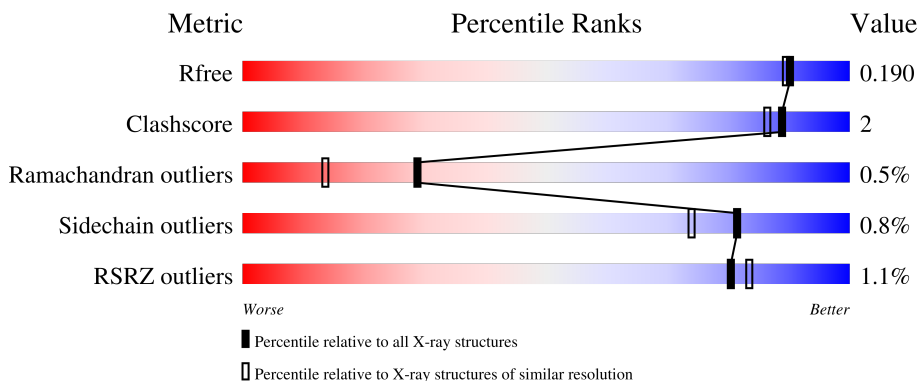
1 Overall quality at a glance

The following experimental techniques were used to determine the structure:

X-RAY DIFFRACTION

The reported resolution of this entry is 1.70 Å.

Percentile scores (ranging between 0-100) for global validation metrics of the entry are shown in the following graphic. The table shows the number of entries on which the scores are based.



Metric	Whole archive (#Entries)	Similar resolution (#Entries, resolution range(Å))
R_{free}	130704	4298 (1.70-1.70)
Clashscore	141614	4695 (1.70-1.70)
Ramachandran outliers	138981	4610 (1.70-1.70)
Sidechain outliers	138945	4610 (1.70-1.70)
RSRZ outliers	127900	4222 (1.70-1.70)

The table below summarises the geometric issues observed across the polymeric chains and their fit to the electron density. The red, orange, yellow and green segments of the lower bar indicate the fraction of residues that contain outliers for ≥ 3 , 2, 1 and 0 types of geometric quality criteria respectively. A grey segment represents the fraction of residues that are not modelled. The numeric value for each fraction is indicated below the corresponding segment, with a dot representing fractions $\leq 5\%$. The upper red bar (where present) indicates the fraction of residues that have poor fit to the electron density. The numeric value is given above the bar.

Mol	Chain	Length	Quality of chain
1	AAA	497	
1	BBB	497	
2	A	2	
2	B	2	

The following table lists non-polymeric compounds, carbohydrate monomers and non-standard

residues in protein, DNA, RNA chains that are outliers for geometric or electron-density-fit criteria:

Mol	Type	Chain	Res	Chirality	Geometry	Clashes	Electron density
4	Q65	AAA	504	X	-	-	-
7	EDO	BBB	515	-	-	X	-

2 Entry composition [i](#)

There are 11 unique types of molecules in this entry. The entry contains 17226 atoms, of which 8077 are hydrogens and 0 are deuteriums.

In the tables below, the ZeroOcc column contains the number of atoms modelled with zero occupancy, the AltConf column contains the number of residues with at least one atom in alternate conformation and the Trace column contains the number of residues modelled with at most 2 atoms.

- Molecule 1 is a protein called Glucosylceramidase.

Mol	Chain	Residues	Atoms					ZeroOcc	AltConf	Trace	
			Total	C	H	N	O				S
1	AAA	497	7884	2562	3903	680	723	16	206	8	0
1	BBB	497	7794	2535	3861	670	711	17	202	1	0

There are 2 discrepancies between the modelled and reference sequences:

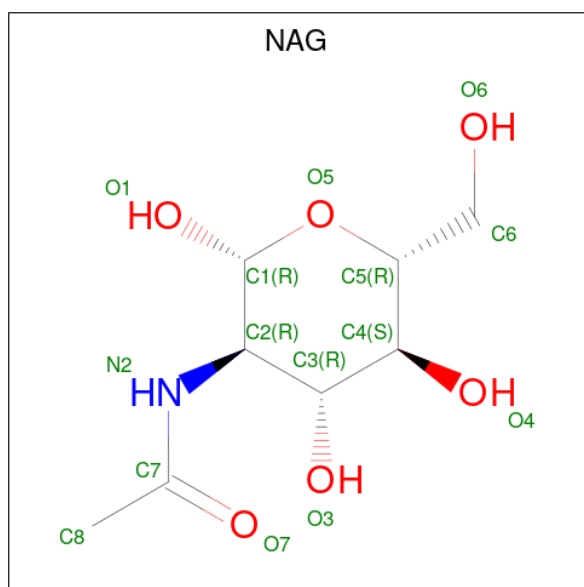
Chain	Residue	Modelled	Actual	Comment	Reference
AAA	495	HIS	ARG	conflict	UNP P04062
BBB	495	HIS	ARG	conflict	UNP P04062

- Molecule 2 is an oligosaccharide called 2-acetamido-2-deoxy-beta-D-glucopyranose-(1-4)-2-acetamido-2-deoxy-beta-D-glucopyranose.



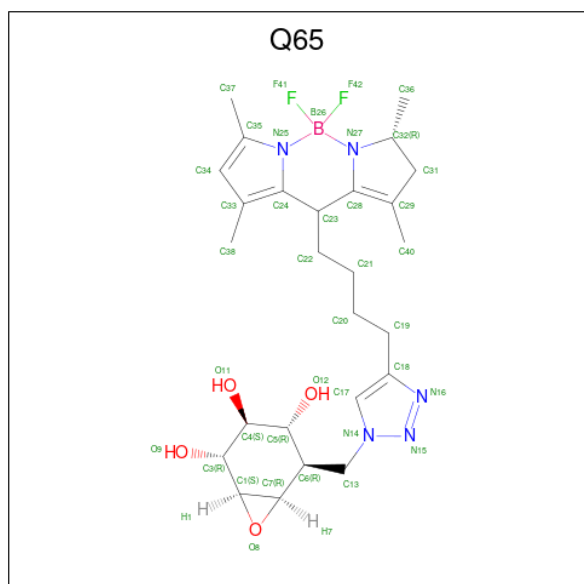
Mol	Chain	Residues	Atoms					ZeroOcc	AltConf	Trace
			Total	C	H	N	O			
2	A	2	55	16	27	2	10	5	0	0
2	B	2	55	16	27	2	10	5	0	0

- Molecule 3 is 2-acetamido-2-deoxy-beta-D-glucopyranose (three-letter code: NAG) (formula: C₈H₁₅NO₆).



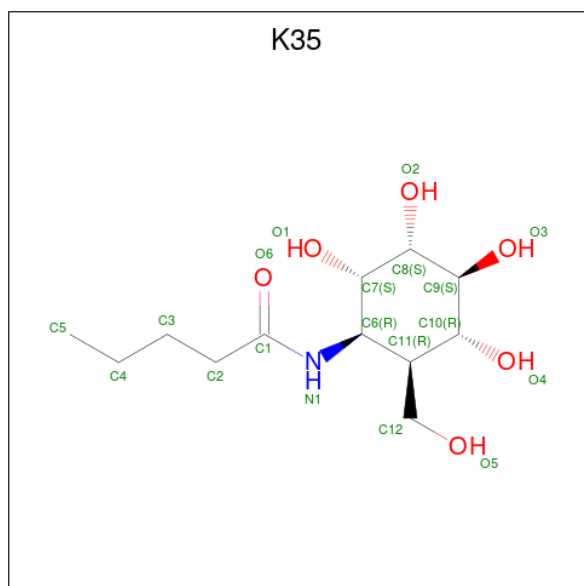
Mol	Chain	Residues	Atoms				ZeroOcc	AltConf	
			Total	C	H	N			O
3	AAA	1	Total	C	H	N	O	3	0
			28	8	14	1	5		
3	BBB	1	Total	C	H	N	O	3	0
			28	8	14	1	5		

- Molecule 4 is (1 {S},2 {R},3 {S},4 {R},5 {R},6 {R})-5-[[4-[4-[(12 {R})-2,2-bis(fluoranyl)-4,6,10,12-tetramethyl-1,3-diaza-2 λ ^4-boratricyclo[7.3.0.0[^]{3,7}]dodeca-4,6,9-trien-8-yl]butyl]-1,2,3-triazol-1-yl]methyl]-7-oxabicyclo[4.1.0]heptane-2,3,4-triol (three-letter code: Q65) (formula: C₂₆H₃₇BF₂N₅O₄) (labeled as "Ligand of Interest" by depositor).



Mol	Chain	Residues	Atoms						ZeroOcc	AltConf	
			Total	B	C	F	H	N			O
4	AAA	1	73	1	26	2	35	5	4	3	0

- Molecule 5 is {N}-[(1 {R},2 {R},3 {R},4 {S},5 {S},6 {S})-2-(hydroxymethyl)-3,4,5,6-tetra kis(oxidanyl)cyclohexyl]pentanamide (three-letter code: K35) (formula: C₁₂H₂₃NO₆).



Mol	Chain	Residues	Atoms					ZeroOcc	AltConf
			Total	C	H	N	O		
5	AAA	1	40	12	22	1	5	4	0
5	BBB	1	40	12	22	1	5	4	0

- Molecule 6 is SULFATE ION (three-letter code: SO4) (formula: O₄S).



Mol	Chain	Residues	Atoms			ZeroOcc	AltConf
			Total	O	S		
6	AAA	1	5	4	1	0	0
6	AAA	1	5	4	1	0	0
6	AAA	1	5	4	1	0	0
6	AAA	1	5	4	1	0	0
6	AAA	1	5	4	1	0	0
6	AAA	1	5	4	1	0	0
6	BBB	1	5	4	1	0	0
6	BBB	1	5	4	1	0	0
6	BBB	1	5	4	1	0	0
6	BBB	1	5	4	1	0	0
6	BBB	1	5	4	1	0	0
6	BBB	1	5	4	1	0	0
6	BBB	1	5	4	1	0	0

- Molecule 7 is 1,2-ETHANEDIOL (three-letter code: EDO) (formula: C₂H₆O₂).



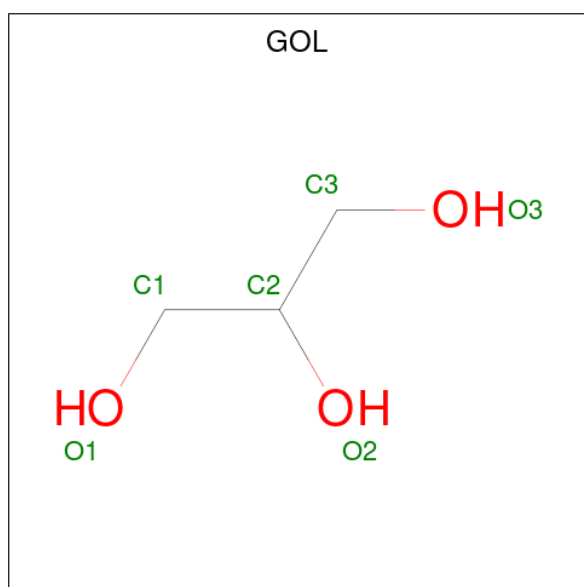
Mol	Chain	Residues	Atoms				ZeroOcc	AltConf
			Total	C	H	O		
7	AAA	1	10	2	6	2	1	0
7	AAA	1	10	2	6	2	1	0
7	AAA	1	10	2	6	2	1	0
7	AAA	1	10	2	6	2	1	0
7	AAA	1	10	2	6	2	1	0
7	AAA	1	10	2	6	2	1	0
7	AAA	1	10	2	6	2	1	0
7	AAA	1	10	2	6	2	1	0
7	AAA	1	10	2	6	2	1	0
7	AAA	1	10	2	6	2	1	0
7	BBB	1	10	2	6	2	1	0
7	BBB	1	10	2	6	2	1	0
7	BBB	1	10	2	6	2	1	0
7	BBB	1	10	2	6	2	1	0

Continued on next page...

Continued from previous page...

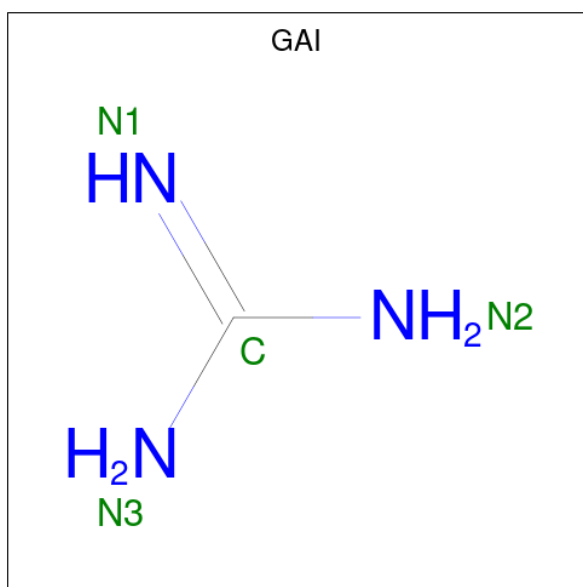
Mol	Chain	Residues	Atoms				ZeroOcc	AltConf
7	BBB	1	Total	C	H	O	1	0
			10	2	6	2		
7	BBB	1	Total	C	H	O	1	0
			10	2	6	2		

- Molecule 8 is GLYCEROL (three-letter code: GOL) (formula: C₃H₈O₃).



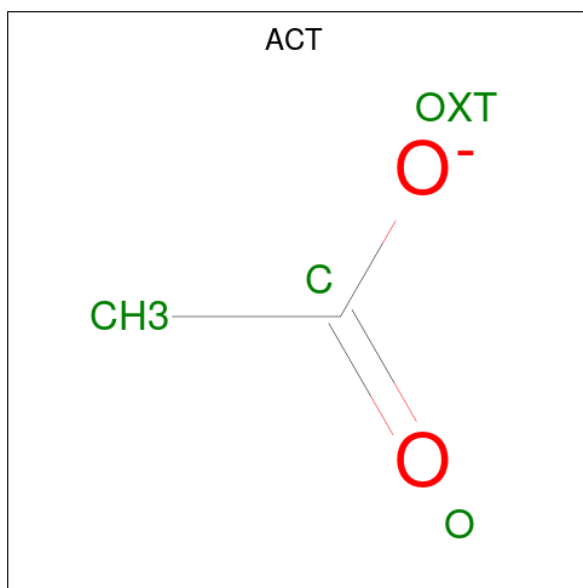
Mol	Chain	Residues	Atoms				ZeroOcc	AltConf
8	AAA	1	Total	C	H	O	2	0
			14	3	8	3		
8	AAA	1	Total	C	H	O	2	0
			14	3	8	3		
8	BBB	1	Total	C	H	O	2	0
			14	3	8	3		
8	BBB	1	Total	C	H	O	2	0
			14	3	8	3		
8	BBB	1	Total	C	H	O	2	0
			14	3	8	3		
8	BBB	1	Total	C	H	O	2	0
			14	3	8	3		

- Molecule 9 is GUANIDINE (three-letter code: GAI) (formula: CH₅N₃).



Mol	Chain	Residues	Atoms				ZeroOcc	AltConf
			Total	C	H	N		
9	AAA	1	9	1	5	3	4	0

- Molecule 10 is ACETATE ION (three-letter code: ACT) (formula: C₂H₃O₂).



Mol	Chain	Residues	Atoms				ZeroOcc	AltConf
			Total	C	H	O		
10	BBB	1	7	2	3	2	0	0

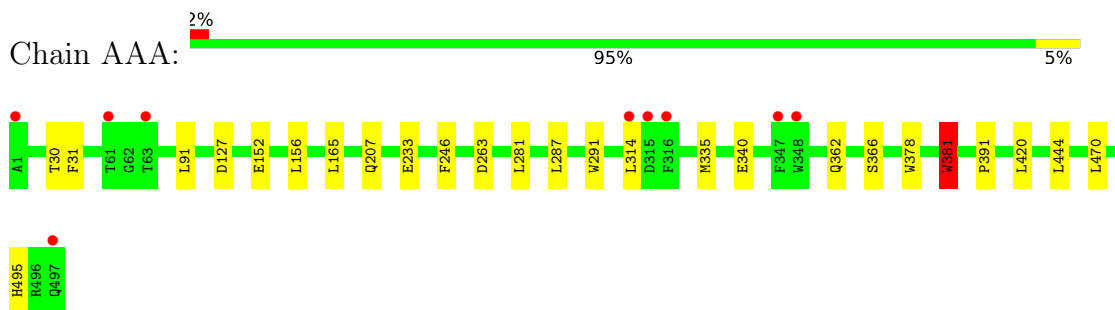
- Molecule 11 is water.

Mol	Chain	Residues	Atoms		ZeroOcc	AltConf
11	AAA	446	Total 446	O 446	0	0
11	BBB	458	Total 458	O 458	0	0

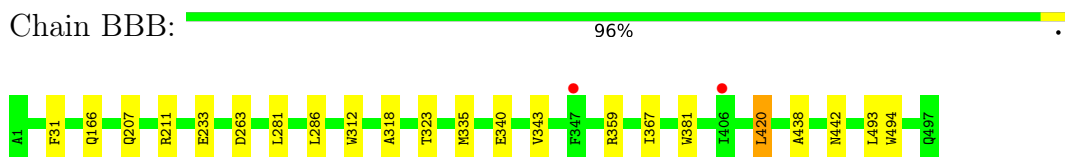
3 Residue-property plots [i](#)

These plots are drawn for all protein, RNA, DNA and oligosaccharide chains in the entry. The first graphic for a chain summarises the proportions of the various outlier classes displayed in the second graphic. The second graphic shows the sequence view annotated by issues in geometry and electron density. Residues are color-coded according to the number of geometric quality criteria for which they contain at least one outlier: green = 0, yellow = 1, orange = 2 and red = 3 or more. A red dot above a residue indicates a poor fit to the electron density ($RSRZ > 2$). Stretches of 2 or more consecutive residues without any outlier are shown as a green connector. Residues present in the sample, but not in the model, are shown in grey.

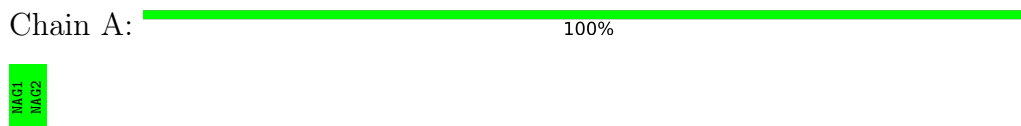
- Molecule 1: Glucosylceramidase



- Molecule 1: Glucosylceramidase



- Molecule 2: 2-acetamido-2-deoxy-beta-D-glucopyranose-(1-4)-2-acetamido-2-deoxy-beta-D-glucopyranose



- Molecule 2: 2-acetamido-2-deoxy-beta-D-glucopyranose-(1-4)-2-acetamido-2-deoxy-beta-D-glucopyranose



4 Data and refinement statistics

Property	Value	Source
Space group	C 2 2 21	Depositor
Cell constants a, b, c, α , β , γ	111.17Å 285.62Å 91.56Å 90.00° 90.00° 90.00°	Depositor
Resolution (Å)	103.82 – 1.70 103.60 – 1.70	Depositor EDS
% Data completeness (in resolution range)	99.9 (103.82-1.70) 100.0 (103.60-1.70)	Depositor EDS
R_{merge}	0.09	Depositor
R_{sym}	(Not available)	Depositor
$\langle I/\sigma(I) \rangle$ ¹	2.36 (at 1.70Å)	Xtrriage
Refinement program	REFMAC 5.8.0258	Depositor
R, R_{free}	0.163 , 0.180 0.172 , 0.190	Depositor DCC
R_{free} test set	7997 reflections (5.01%)	wwPDB-VP
Wilson B-factor (Å ²)	18.9	Xtrriage
Anisotropy	0.342	Xtrriage
Bulk solvent k_{sol} (e/Å ³), B_{sol} (Å ²)	0.41 , 42.0	EDS
L-test for twinning ²	$\langle L \rangle = 0.48$, $\langle L^2 \rangle = 0.31$	Xtrriage
Estimated twinning fraction	No twinning to report.	Xtrriage
F_o, F_c correlation	0.97	EDS
Total number of atoms	17226	wwPDB-VP
Average B, all atoms (Å ²)	25.0	wwPDB-VP

Xtrriage's analysis on translational NCS is as follows: *The largest off-origin peak in the Patterson function is 3.23% of the height of the origin peak. No significant pseudotranslation is detected.*

¹Intensities estimated from amplitudes.

²Theoretical values of $\langle |L| \rangle$, $\langle L^2 \rangle$ for acentric reflections are 0.5, 0.333 respectively for untwinned datasets, and 0.375, 0.2 for perfectly twinned datasets.

5 Model quality [i](#)

5.1 Standard geometry [i](#)

Bond lengths and bond angles in the following residue types are not validated in this section: ACT, SO4, GAI, Q65, NAG, K35, EDO, GOL

The Z score for a bond length (or angle) is the number of standard deviations the observed value is removed from the expected value. A bond length (or angle) with $|Z| > 5$ is considered an outlier worth inspection. RMSZ is the root-mean-square of all Z scores of the bond lengths (or angles).

Mol	Chain	Bond lengths		Bond angles	
		RMSZ	# Z >5	RMSZ	# Z >5
1	AAA	0.66	1/4102 (0.0%)	0.72	0/5593
1	BBB	0.66	1/4054 (0.0%)	0.73	0/5527
All	All	0.66	2/8156 (0.0%)	0.72	0/11120

All (2) bond length outliers are listed below:

Mol	Chain	Res	Type	Atoms	Z	Observed(Å)	Ideal(Å)
1	BBB	340	GLU	CD-OE2	15.62	1.42	1.25
1	AAA	340	GLU	CD-OE2	14.65	1.41	1.25

There are no bond angle outliers.

There are no chirality outliers.

There are no planarity outliers.

5.2 Too-close contacts [i](#)

In the following table, the Non-H and H(model) columns list the number of non-hydrogen atoms and hydrogen atoms in the chain respectively. The H(added) column lists the number of hydrogen atoms added and optimized by MolProbity. The Clashes column lists the number of clashes within the asymmetric unit, whereas Symm-Clashes lists symmetry-related clashes.

Mol	Chain	Non-H	H(model)	H(added)	Clashes	Symm-Clashes
1	AAA	3981	3903	3870	16	0
1	BBB	3933	3861	3839	14	0
2	A	28	27	25	0	0
2	B	28	27	25	0	0
3	AAA	14	14	13	0	0
3	BBB	14	14	13	0	0
4	AAA	38	35	0	0	0

Continued on next page...

Continued from previous page...

Mol	Chain	Non-H	H(model)	H(added)	Clashes	Symm-Clashes
5	AAA	18	22	0	0	0
5	BBB	18	22	0	0	0
6	AAA	30	0	0	0	0
6	BBB	35	0	0	0	0
7	AAA	40	60	60	2	0
7	BBB	24	36	36	7	0
8	AAA	12	16	16	0	0
8	BBB	24	32	32	0	0
9	AAA	4	5	4	0	0
10	BBB	4	3	3	0	0
11	AAA	446	0	0	1	0
11	BBB	458	0	0	2	0
All	All	9149	8077	7936	30	0

The all-atom clashscore is defined as the number of clashes found per 1000 atoms (including hydrogen atoms). The all-atom clashscore for this structure is 2.

All (30) close contacts within the same asymmetric unit are listed below, sorted by their clash magnitude.

Atom-1	Atom-2	Interatomic distance (Å)	Clash overlap (Å)
1:BBB:442:ASN:HD21	7:BBB:518:EDO:H12	1.50	0.77
1:BBB:31:PHE:HB3	7:BBB:515:EDO:H21	1.72	0.72
1:AAA:366[A]:SER:OG	1:AAA:378:TRP:CH2	2.45	0.70
1:AAA:207:GLN:NE2	1:AAA:263:ASP:OD1	2.23	0.66
1:AAA:366[A]:SER:OG	1:AAA:378:TRP:HH2	1.79	0.64
1:BBB:493:LEU:HB3	7:BBB:515:EDO:H11	1.83	0.61
1:BBB:31:PHE:CD1	7:BBB:515:EDO:H12	2.42	0.55
1:AAA:314:LEU:HD21	1:AAA:362:GLN:HG3	1.87	0.55
1:BBB:286:LEU:HD13	1:BBB:318:ALA:HB2	1.91	0.52
1:AAA:207:GLN:HE22	1:AAA:263:ASP:HA	1.74	0.52
1:AAA:31:PHE:HB2	1:AAA:495:HIS:CE1	2.45	0.51
1:AAA:165:LEU:HG	7:AAA:517:EDO:H11	1.91	0.51
1:BBB:207:GLN:NE2	1:BBB:263:ASP:OD1	2.36	0.51
1:AAA:444:LEU:CD1	1:AAA:470:LEU:HD12	2.41	0.50
1:AAA:152:GLU:HA	1:AAA:156[A]:LEU:HD12	1.95	0.49
1:BBB:318:ALA:HB1	1:BBB:323:THR:HG21	1.95	0.49
1:BBB:343:VAL:HG11	1:BBB:359:ARG:HG2	1.98	0.46
1:BBB:367:ILE:HD11	1:BBB:420:LEU:HD13	1.98	0.46
1:BBB:31:PHE:CG	7:BBB:515:EDO:H12	2.52	0.45
1:AAA:31:PHE:HB2	1:AAA:495:HIS:NE2	2.33	0.44
1:AAA:287:LEU:HB3	1:AAA:291:TRP:CD1	2.53	0.44

Continued on next page...

Continued from previous page...

Atom-1	Atom-2	Interatomic distance (Å)	Clash overlap (Å)
1:AAA:30:THR:HG23	7:AAA:521:EDO:H12	2.00	0.43
1:BBB:166:GLN:NE2	11:BBB:613:HOH:O	2.52	0.43
1:BBB:211:ARG:NH1	11:BBB:603:HOH:O	2.40	0.43
1:AAA:127:ASP:HB3	1:AAA:246:PHE:CG	2.54	0.42
1:AAA:91:LEU:HD23	1:AAA:391:PRO:HG3	2.01	0.41
1:AAA:381:TRP:HA	1:AAA:381:TRP:CE3	2.56	0.41
1:BBB:494:TRP:HA	7:BBB:515:EDO:H22	2.03	0.41
1:BBB:438:ALA:HB2	7:BBB:518:EDO:H11	2.02	0.41
1:AAA:152:GLU:OE2	11:AAA:602:HOH:O	2.22	0.40

There are no symmetry-related clashes.

5.3 Torsion angles [i](#)

5.3.1 Protein backbone [i](#)

In the following table, the Percentiles column shows the percent Ramachandran outliers of the chain as a percentile score with respect to all X-ray entries followed by that with respect to entries of similar resolution.

The Analysed column shows the number of residues for which the backbone conformation was analysed, and the total number of residues.

Mol	Chain	Analysed	Favoured	Allowed	Outliers	Percentiles	
1	AAA	503/497 (101%)	488 (97%)	12 (2%)	3 (1%)	25	11
1	BBB	496/497 (100%)	482 (97%)	12 (2%)	2 (0%)	34	18
All	All	999/994 (100%)	970 (97%)	24 (2%)	5 (0%)	29	13

All (5) Ramachandran outliers are listed below:

Mol	Chain	Res	Type
1	AAA	233	GLU
1	BBB	233	GLU
1	BBB	281	LEU
1	AAA	281	LEU
1	AAA	381	TRP

5.3.2 Protein sidechains [i](#)

In the following table, the Percentiles column shows the percent sidechain outliers of the chain as a percentile score with respect to all X-ray entries followed by that with respect to entries of similar resolution.

The Analysed column shows the number of residues for which the sidechain conformation was analysed, and the total number of residues.

Mol	Chain	Analysed	Rotameric	Outliers	Percentiles	
1	AAA	427/424 (101%)	424 (99%)	3 (1%)	84	77
1	BBB	423/424 (100%)	419 (99%)	4 (1%)	78	70
All	All	850/848 (100%)	843 (99%)	7 (1%)	81	74

All (7) residues with a non-rotameric sidechain are listed below:

Mol	Chain	Res	Type
1	AAA	335	MET
1	AAA	381	TRP
1	AAA	420	LEU
1	BBB	312	TRP
1	BBB	335	MET
1	BBB	381	TRP
1	BBB	420	LEU

Sometimes sidechains can be flipped to improve hydrogen bonding and reduce clashes. There are no such sidechains identified.

5.3.3 RNA [i](#)

There are no RNA molecules in this entry.

5.4 Non-standard residues in protein, DNA, RNA chains [i](#)

There are no non-standard protein/DNA/RNA residues in this entry.

5.5 Carbohydrates [i](#)

4 monosaccharides are modelled in this entry.

In the following table, the Counts columns list the number of bonds (or angles) for which Mogul statistics could be retrieved, the number of bonds (or angles) that are observed in the model and the number of bonds (or angles) that are defined in the Chemical Component Dictionary. The

Link column lists molecule types, if any, to which the group is linked. The Z score for a bond length (or angle) is the number of standard deviations the observed value is removed from the expected value. A bond length (or angle) with $|Z| > 2$ is considered an outlier worth inspection. RMSZ is the root-mean-square of all Z scores of the bond lengths (or angles).

Mol	Type	Chain	Res	Link	Bond lengths			Bond angles		
					Counts	RMSZ	# Z > 2	Counts	RMSZ	# Z > 2
2	NAG	A	1	2,1	14,14,15	0.43	0	17,19,21	0.69	0
2	NAG	A	2	2	14,14,15	0.44	0	17,19,21	0.75	0
2	NAG	B	1	2,1	14,14,15	0.44	0	17,19,21	0.80	0
2	NAG	B	2	2	14,14,15	0.52	0	17,19,21	1.59	6 (35%)

In the following table, the Chirals column lists the number of chiral outliers, the number of chiral centers analysed, the number of these observed in the model and the number defined in the Chemical Component Dictionary. Similar counts are reported in the Torsion and Rings columns. '-' means no outliers of that kind were identified.

Mol	Type	Chain	Res	Link	Chirals	Torsions	Rings
2	NAG	A	1	2,1	-	0/6/23/26	0/1/1/1
2	NAG	A	2	2	-	0/6/23/26	0/1/1/1
2	NAG	B	1	2,1	-	0/6/23/26	0/1/1/1
2	NAG	B	2	2	-	0/6/23/26	0/1/1/1

There are no bond length outliers.

All (6) bond angle outliers are listed below:

Mol	Chain	Res	Type	Atoms	Z	Observed($^{\circ}$)	Ideal($^{\circ}$)
2	B	2	NAG	C1-O5-C5	3.07	116.35	112.19
2	B	2	NAG	O5-C5-C6	2.96	111.85	107.20
2	B	2	NAG	C1-C2-N2	2.33	114.46	110.49
2	B	2	NAG	C6-C5-C4	-2.27	107.68	113.00
2	B	2	NAG	O5-C1-C2	-2.25	107.73	111.29
2	B	2	NAG	C4-C3-C2	-2.07	107.99	111.02

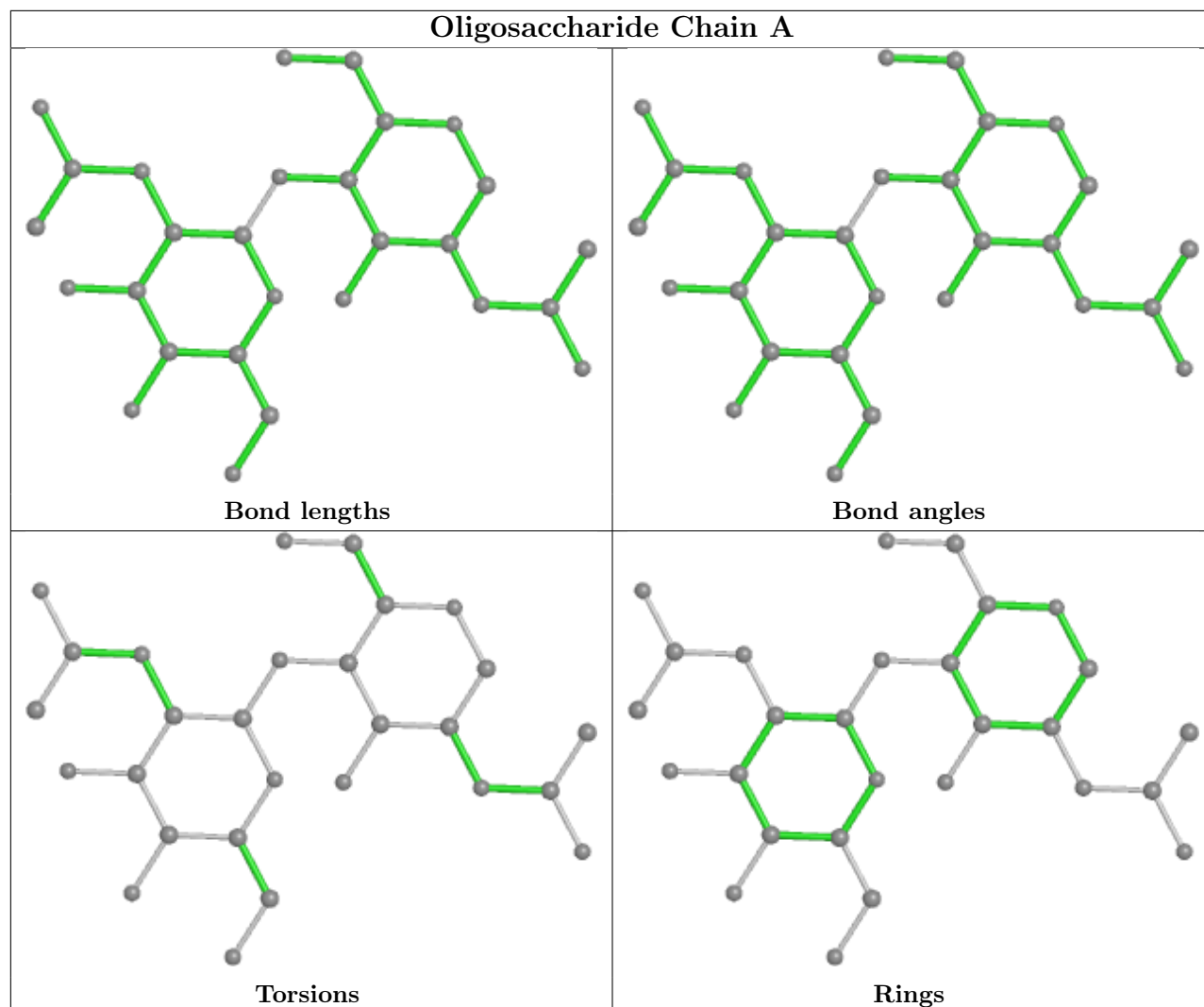
There are no chirality outliers.

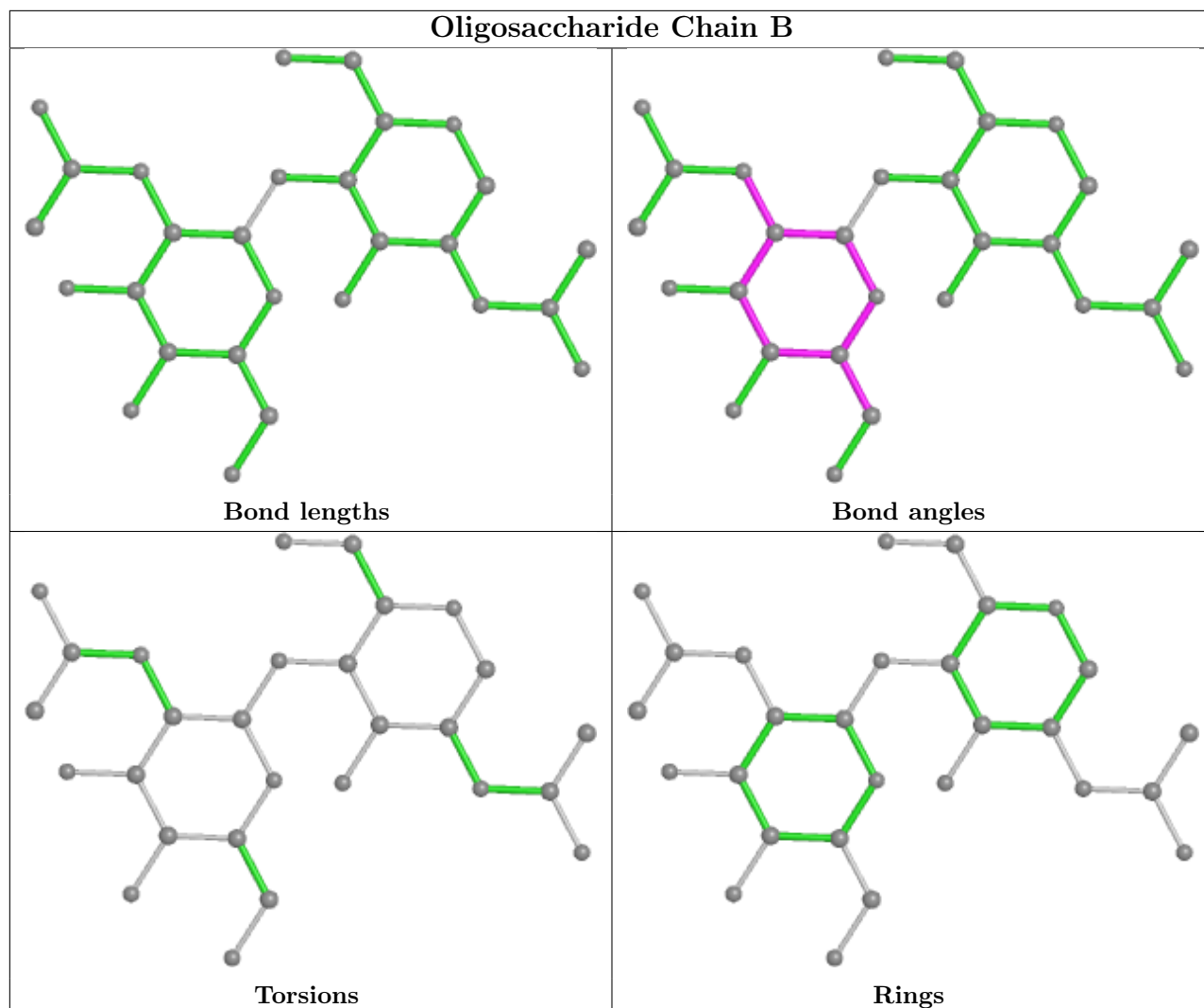
There are no torsion outliers.

There are no ring outliers.

No monomer is involved in short contacts.

The following is a two-dimensional graphical depiction of Mogul quality analysis of bond lengths, bond angles, torsion angles, and ring geometry for oligosaccharide.





5.6 Ligand geometry [i](#)

42 ligands are modelled in this entry.

In the following table, the Counts columns list the number of bonds (or angles) for which Mogul statistics could be retrieved, the number of bonds (or angles) that are observed in the model and the number of bonds (or angles) that are defined in the Chemical Component Dictionary. The Link column lists molecule types, if any, to which the group is linked. The Z score for a bond length (or angle) is the number of standard deviations the observed value is removed from the expected value. A bond length (or angle) with $|Z| > 2$ is considered an outlier worth inspection. RMSZ is the root-mean-square of all Z scores of the bond lengths (or angles).

Mol	Type	Chain	Res	Link	Bond lengths			Bond angles		
					Counts	RMSZ	$\# Z > 2$	Counts	RMSZ	$\# Z > 2$
6	SO4	BBB	507	-	4,4,4	0.40	0	6,6,6	0.16	0
6	SO4	BBB	510	-	4,4,4	0.36	0	6,6,6	0.07	0
6	SO4	BBB	512	-	4,4,4	0.37	0	6,6,6	0.04	0
7	EDO	BBB	517	-	3,3,3	0.06	0	2,2,2	0.20	0

Mol	Type	Chain	Res	Link	Bond lengths			Bond angles		
					Counts	RMSZ	# Z > 2	Counts	RMSZ	# Z > 2
8	GOL	AAA	522	-	5,5,5	0.15	0	5,5,5	0.49	0
6	SO4	AAA	511	-	4,4,4	0.36	0	6,6,6	0.07	0
8	GOL	BBB	520	-	5,5,5	0.13	0	5,5,5	0.35	0
8	GOL	BBB	522	-	5,5,5	0.12	0	5,5,5	0.30	0
7	EDO	AAA	514	-	3,3,3	0.13	0	2,2,2	0.22	0
7	EDO	AAA	517	-	3,3,3	0.14	0	2,2,2	0.32	0
6	SO4	BBB	511	-	4,4,4	0.35	0	6,6,6	0.07	0
4	Q65	AAA	504	-	38,43,43	4.53	12 (31%)	37,68,68	2.90	13 (35%)
6	SO4	BBB	506	-	4,4,4	0.39	0	6,6,6	0.16	0
7	EDO	BBB	514	-	3,3,3	0.08	0	2,2,2	0.18	0
6	SO4	BBB	508	-	4,4,4	0.37	0	6,6,6	0.06	0
6	SO4	AAA	507	-	4,4,4	0.40	0	6,6,6	0.19	0
7	EDO	BBB	513	-	3,3,3	0.11	0	2,2,2	0.06	0
8	GOL	AAA	523	-	5,5,5	0.16	0	5,5,5	0.37	0
9	GAI	AAA	524	-	3,3,3	0.84	0	3,3,3	0.57	0
6	SO4	AAA	509	-	4,4,4	0.37	0	6,6,6	0.08	0
7	EDO	AAA	515	-	3,3,3	0.09	0	2,2,2	0.04	0
7	EDO	BBB	515	-	3,3,3	0.11	0	2,2,2	0.48	0
7	EDO	BBB	518	-	3,3,3	0.05	0	2,2,2	0.28	0
8	GOL	BBB	519	-	5,5,5	0.10	0	5,5,5	0.24	0
8	GOL	BBB	521	-	5,5,5	0.16	0	5,5,5	0.49	0
10	ACT	BBB	504	-	3,3,3	1.01	0	3,3,3	0.78	0
6	SO4	AAA	506	-	4,4,4	0.49	0	6,6,6	0.12	0
6	SO4	BBB	509	-	4,4,4	0.37	0	6,6,6	0.10	0
7	EDO	AAA	521	-	3,3,3	0.07	0	2,2,2	0.29	0
7	EDO	AAA	518	-	3,3,3	0.08	0	2,2,2	0.21	0
6	SO4	AAA	510	-	4,4,4	0.35	0	6,6,6	0.09	0
6	SO4	AAA	508	-	4,4,4	0.37	0	6,6,6	0.09	0
5	K35	BBB	505	1	18,18,19	0.39	0	23,24,26	1.71	2 (8%)
7	EDO	AAA	519	-	3,3,3	0.07	0	2,2,2	0.18	0
5	K35	AAA	505	1	18,18,19	0.53	0	23,24,26	1.31	4 (17%)
7	EDO	AAA	512	-	3,3,3	0.06	0	2,2,2	0.14	0
7	EDO	BBB	516	-	3,3,3	0.08	0	2,2,2	0.23	0
7	EDO	AAA	513	-	3,3,3	0.03	0	2,2,2	0.18	0
3	NAG	AAA	503	1	14,14,15	0.38	0	17,19,21	1.29	2 (11%)
7	EDO	AAA	520	-	3,3,3	0.06	0	2,2,2	0.20	0
7	EDO	AAA	516	-	3,3,3	0.07	0	2,2,2	0.14	0
3	NAG	BBB	503	1	14,14,15	0.39	0	17,19,21	1.05	2 (11%)

In the following table, the Chirals column lists the number of chiral outliers, the number of chiral centers analysed, the number of these observed in the model and the number defined in the Chemical Component Dictionary. Similar counts are reported in the Torsion and Rings columns.

'-' means no outliers of that kind were identified.

Mol	Type	Chain	Res	Link	Chirals	Torsions	Rings
7	EDO	BBB	517	-	-	1/1/1/1	-
8	GOL	AAA	522	-	-	2/4/4/4	-
8	GOL	BBB	520	-	-	2/4/4/4	-
8	GOL	BBB	522	-	-	2/4/4/4	-
7	EDO	AAA	514	-	-	1/1/1/1	-
7	EDO	AAA	517	-	-	1/1/1/1	-
4	Q65	AAA	504	-	1/1/12/12	3/11/72/72	0/5/6/6
7	EDO	BBB	513	-	-	0/1/1/1	-
8	GOL	AAA	523	-	-	4/4/4/4	-
7	EDO	AAA	515	-	-	0/1/1/1	-
7	EDO	BBB	515	-	-	1/1/1/1	-
7	EDO	BBB	518	-	-	1/1/1/1	-
8	GOL	BBB	519	-	-	0/4/4/4	-
8	GOL	BBB	521	-	-	4/4/4/4	-
7	EDO	AAA	521	-	-	1/1/1/1	-
7	EDO	AAA	518	-	-	1/1/1/1	-
5	K35	BBB	505	1	-	2/10/30/34	0/1/1/1
7	EDO	AAA	519	-	-	1/1/1/1	-
5	K35	AAA	505	1	-	2/10/30/34	0/1/1/1
7	EDO	AAA	512	-	-	0/1/1/1	-
3	NAG	BBB	503	1	-	0/6/23/26	0/1/1/1
7	EDO	BBB	516	-	-	0/1/1/1	-
7	EDO	AAA	513	-	-	1/1/1/1	-
3	NAG	AAA	503	1	-	2/6/23/26	0/1/1/1
7	EDO	AAA	520	-	-	0/1/1/1	-
7	EDO	AAA	516	-	-	1/1/1/1	-
7	EDO	BBB	514	-	-	1/1/1/1	-

All (12) bond length outliers are listed below:

Mol	Chain	Res	Type	Atoms	Z	Observed(Å)	Ideal(Å)
4	AAA	504	Q65	C29-C28	22.30	1.49	1.33
4	AAA	504	Q65	C31-C29	-12.32	1.39	1.51
4	AAA	504	Q65	B26-F42	5.70	1.46	1.38
4	AAA	504	Q65	B26-N25	-4.12	1.49	1.59
4	AAA	504	Q65	C24-C23	-3.58	1.48	1.54
4	AAA	504	Q65	B26-F41	3.53	1.43	1.38
4	AAA	504	Q65	N16-N15	3.47	1.40	1.34
4	AAA	504	Q65	N15-N14	3.24	1.40	1.34
4	AAA	504	Q65	C7-C1	3.12	1.52	1.46

Continued on next page...

Continued from previous page...

Mol	Chain	Res	Type	Atoms	Z	Observed(Å)	Ideal(Å)
4	AAA	504	Q65	C17-C18	2.55	1.40	1.36
4	AAA	504	Q65	C22-C23	-2.28	1.50	1.53
4	AAA	504	Q65	C18-N16	2.03	1.36	1.34

All (23) bond angle outliers are listed below:

Mol	Chain	Res	Type	Atoms	Z	Observed(°)	Ideal(°)
4	AAA	504	Q65	F42-B26-F41	-8.73	100.80	109.97
4	AAA	504	Q65	C22-C23-C28	8.24	120.71	111.86
5	BBB	505	K35	C11-C6-N1	6.31	119.21	111.36
4	AAA	504	Q65	C37-C35-C34	-6.29	117.20	128.72
4	AAA	504	Q65	N25-B26-N27	5.55	115.97	107.05
4	AAA	504	Q65	N16-N15-N14	-3.90	104.37	107.31
5	BBB	505	K35	C7-C6-N1	-3.71	105.12	110.86
4	AAA	504	Q65	C7-O8-C1	3.56	64.06	60.78
5	AAA	505	K35	C11-C6-N1	3.48	115.69	111.36
4	AAA	504	Q65	C40-C29-C31	3.25	123.69	120.11
5	AAA	505	K35	C6-N1-C1	-2.83	118.72	123.48
4	AAA	504	Q65	C33-C24-C23	2.69	136.34	125.21
3	AAA	503	NAG	O5-C5-C6	2.63	111.33	107.20
4	AAA	504	Q65	C35-C34-C33	-2.56	102.19	106.30
3	AAA	503	NAG	C1-O5-C5	2.55	115.64	112.19
4	AAA	504	Q65	O8-C7-C1	-2.43	57.68	59.61
4	AAA	504	Q65	B26-N27-C28	-2.30	121.13	124.94
3	BBB	503	NAG	C1-O5-C5	2.29	115.29	112.19
5	AAA	505	K35	O6-C1-C2	-2.28	117.84	122.02
4	AAA	504	Q65	F41-B26-N25	2.28	111.73	108.67
3	BBB	503	NAG	C1-C2-N2	2.14	114.14	110.49
4	AAA	504	Q65	O8-C1-C3	-2.11	112.83	115.73
5	AAA	505	K35	C10-C11-C6	2.08	113.82	109.26

All (1) chirality outliers are listed below:

Mol	Chain	Res	Type	Atom
4	AAA	504	Q65	C23

All (34) torsion outliers are listed below:

Mol	Chain	Res	Type	Atoms
4	AAA	504	Q65	C21-C22-C23-C28
8	AAA	522	GOL	C1-C2-C3-O3
8	AAA	523	GOL	O1-C1-C2-O2

Continued on next page...

Continued from previous page...

Mol	Chain	Res	Type	Atoms
8	AAA	523	GOL	O1-C1-C2-C3
8	AAA	523	GOL	C1-C2-C3-O3
8	BBB	520	GOL	O1-C1-C2-O2
8	BBB	520	GOL	O1-C1-C2-C3
8	BBB	521	GOL	O1-C1-C2-C3
5	AAA	505	K35	C1-C2-C3-C4
3	AAA	503	NAG	C8-C7-N2-C2
3	AAA	503	NAG	O7-C7-N2-C2
8	BBB	521	GOL	C1-C2-C3-O3
8	BBB	522	GOL	C1-C2-C3-O3
8	AAA	522	GOL	O2-C2-C3-O3
8	AAA	523	GOL	O2-C2-C3-O3
8	BBB	522	GOL	O2-C2-C3-O3
7	AAA	517	EDO	O1-C1-C2-O2
7	AAA	519	EDO	O1-C1-C2-O2
7	BBB	518	EDO	O1-C1-C2-O2
5	BBB	505	K35	C2-C3-C4-C5
7	AAA	521	EDO	O1-C1-C2-O2
7	AAA	516	EDO	O1-C1-C2-O2
7	BBB	514	EDO	O1-C1-C2-O2
5	AAA	505	K35	C2-C3-C4-C5
7	AAA	514	EDO	O1-C1-C2-O2
4	AAA	504	Q65	C17-C18-C19-C20
8	BBB	521	GOL	O2-C2-C3-O3
5	BBB	505	K35	C1-C2-C3-C4
8	BBB	521	GOL	O1-C1-C2-O2
7	BBB	515	EDO	O1-C1-C2-O2
7	AAA	513	EDO	O1-C1-C2-O2
7	AAA	518	EDO	O1-C1-C2-O2
7	BBB	517	EDO	O1-C1-C2-O2
4	AAA	504	Q65	C21-C22-C23-C24

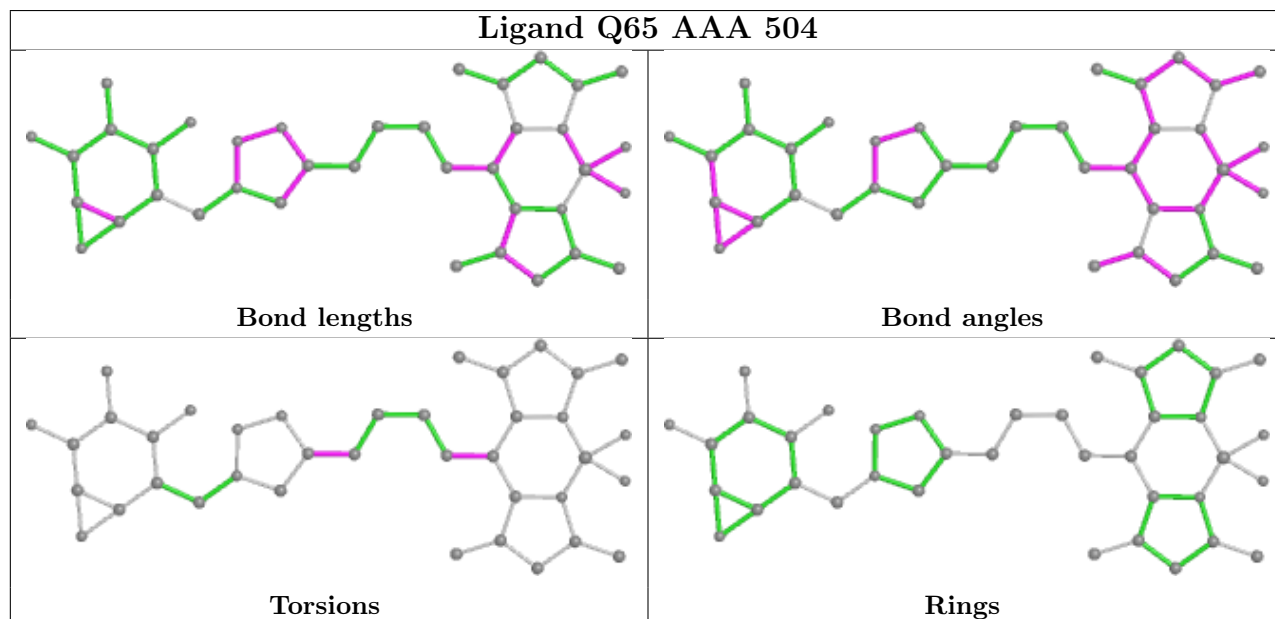
There are no ring outliers.

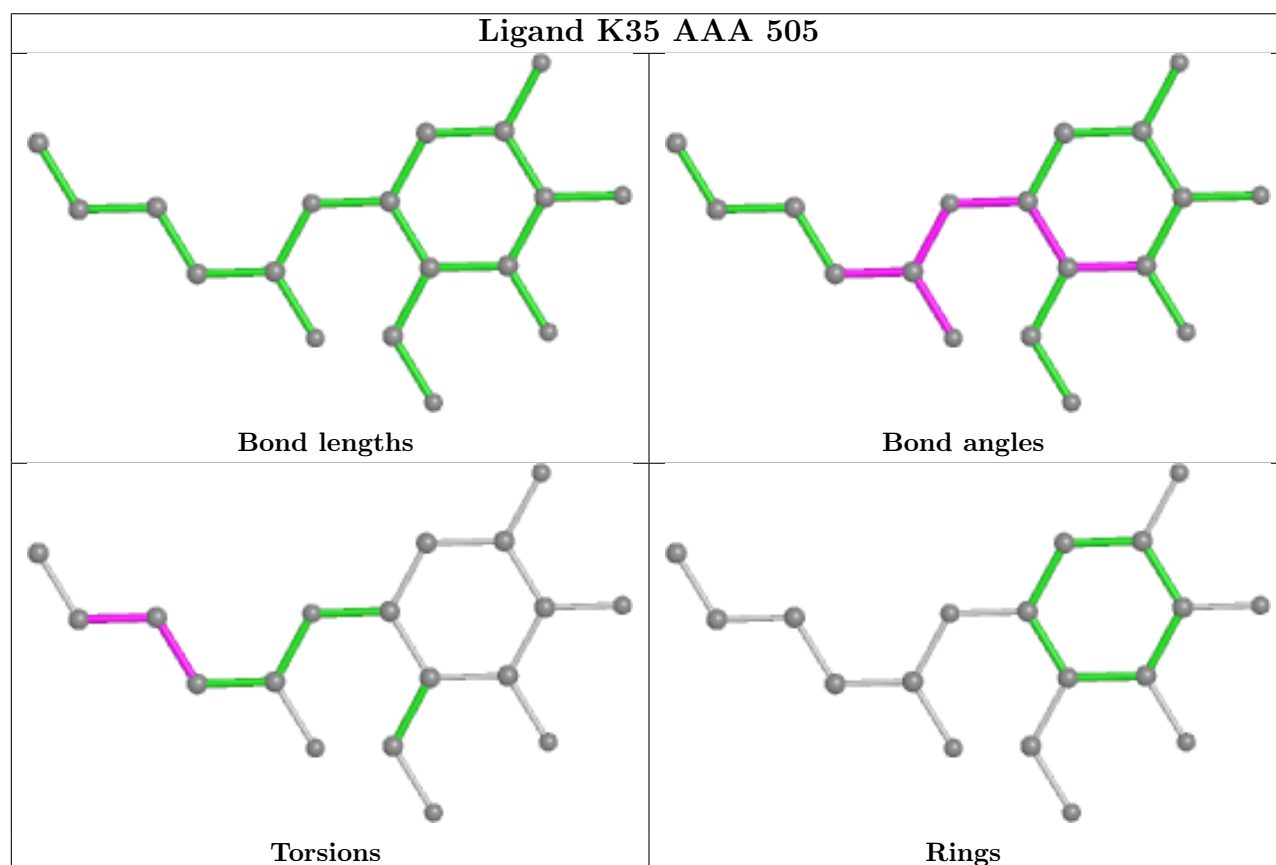
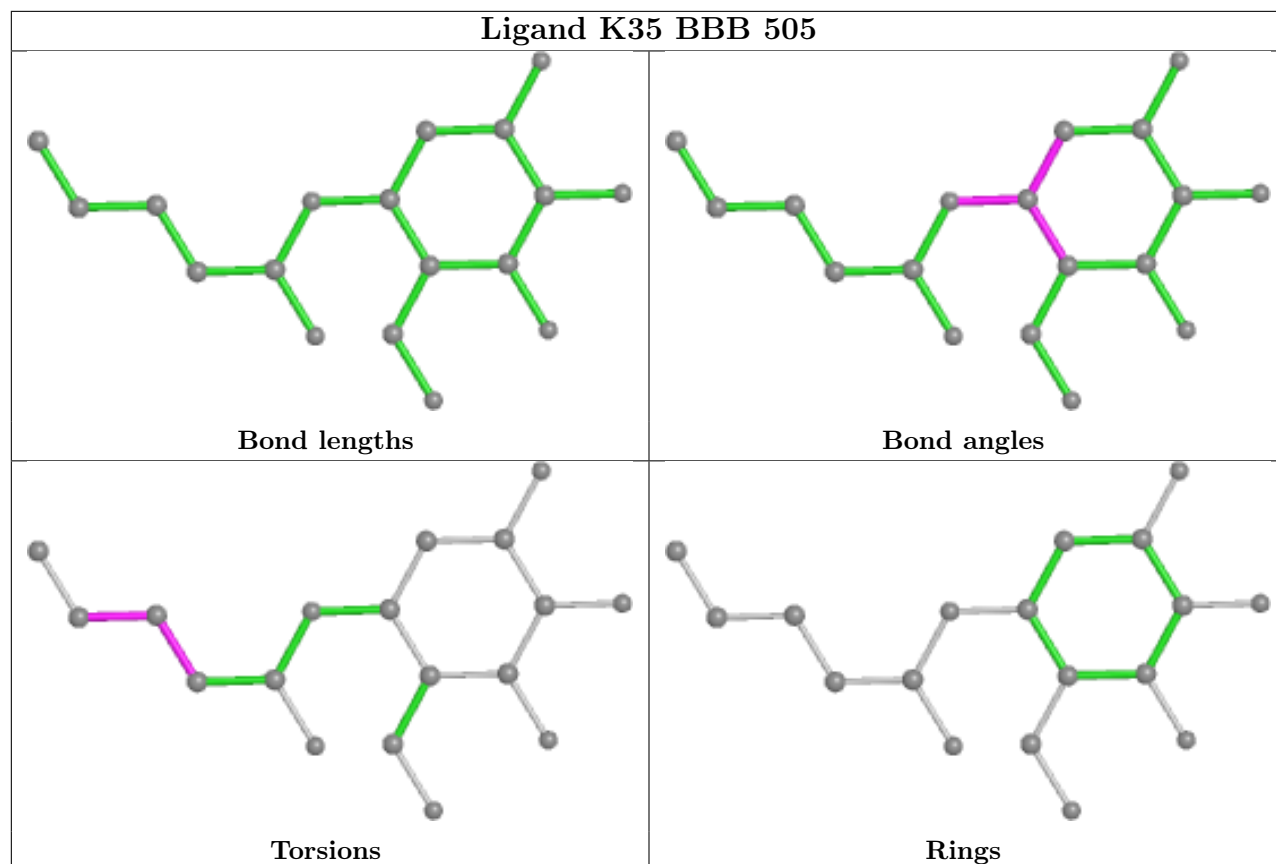
4 monomers are involved in 9 short contacts:

Mol	Chain	Res	Type	Clashes	Symm-Clashes
7	AAA	517	EDO	1	0
7	BBB	515	EDO	5	0
7	BBB	518	EDO	2	0
7	AAA	521	EDO	1	0

The following is a two-dimensional graphical depiction of Mogul quality analysis of bond lengths,

bond angles, torsion angles, and ring geometry for all instances of the Ligand of Interest. In addition, ligands with molecular weight > 250 and outliers as shown on the validation Tables will also be included. For torsion angles, if less than 5% of the Mogul distribution of torsion angles is within 10 degrees of the torsion angle in question, then that torsion angle is considered an outlier. Any bond that is central to one or more torsion angles identified as an outlier by Mogul will be highlighted in the graph. For rings, the root-mean-square deviation (RMSD) between the ring in question and similar rings identified by Mogul is calculated over all ring torsion angles. If the average RMSD is greater than 60 degrees and the minimal RMSD between the ring in question and any Mogul-identified rings is also greater than 60 degrees, then that ring is considered an outlier. The outliers are highlighted in purple. The color gray indicates Mogul did not find sufficient equivalents in the CSD to analyse the geometry.





5.7 Other polymers [i](#)

There are no such residues in this entry.

5.8 Polymer linkage issues [i](#)

There are no chain breaks in this entry.

6 Fit of model and data [i](#)

6.1 Protein, DNA and RNA chains [i](#)

In the following table, the column labelled ‘#RSRZ > 2’ contains the number (and percentage) of RSRZ outliers, followed by percent RSRZ outliers for the chain as percentile scores relative to all X-ray entries and entries of similar resolution. The OWAB column contains the minimum, median, 95th percentile and maximum values of the occupancy-weighted average B-factor per residue. The column labelled ‘Q < 0.9’ lists the number of (and percentage) of residues with an average occupancy less than 0.9.

Mol	Chain	Analysed	<RSRZ>	#RSRZ>2	OWAB(Å ²)	Q<0.9
1	AAA	497/497 (100%)	-0.17	9 (1%) 68 72	15, 22, 39, 57	5 (1%)
1	BBB	497/497 (100%)	-0.19	2 (0%) 92 93	15, 21, 35, 47	3 (0%)
All	All	994/994 (100%)	-0.18	11 (1%) 80 83	15, 22, 37, 57	8 (0%)

All (11) RSRZ outliers are listed below:

Mol	Chain	Res	Type	RSRZ
1	AAA	63	THR	3.8
1	AAA	316	PHE	3.6
1	AAA	1	ALA	2.9
1	BBB	406	ILE	2.8
1	AAA	348	TRP	2.7
1	BBB	347	PHE	2.7
1	AAA	347	PHE	2.5
1	AAA	497	GLN	2.5
1	AAA	314	LEU	2.2
1	AAA	315	ASP	2.2
1	AAA	61	THR	2.1

6.2 Non-standard residues in protein, DNA, RNA chains [i](#)

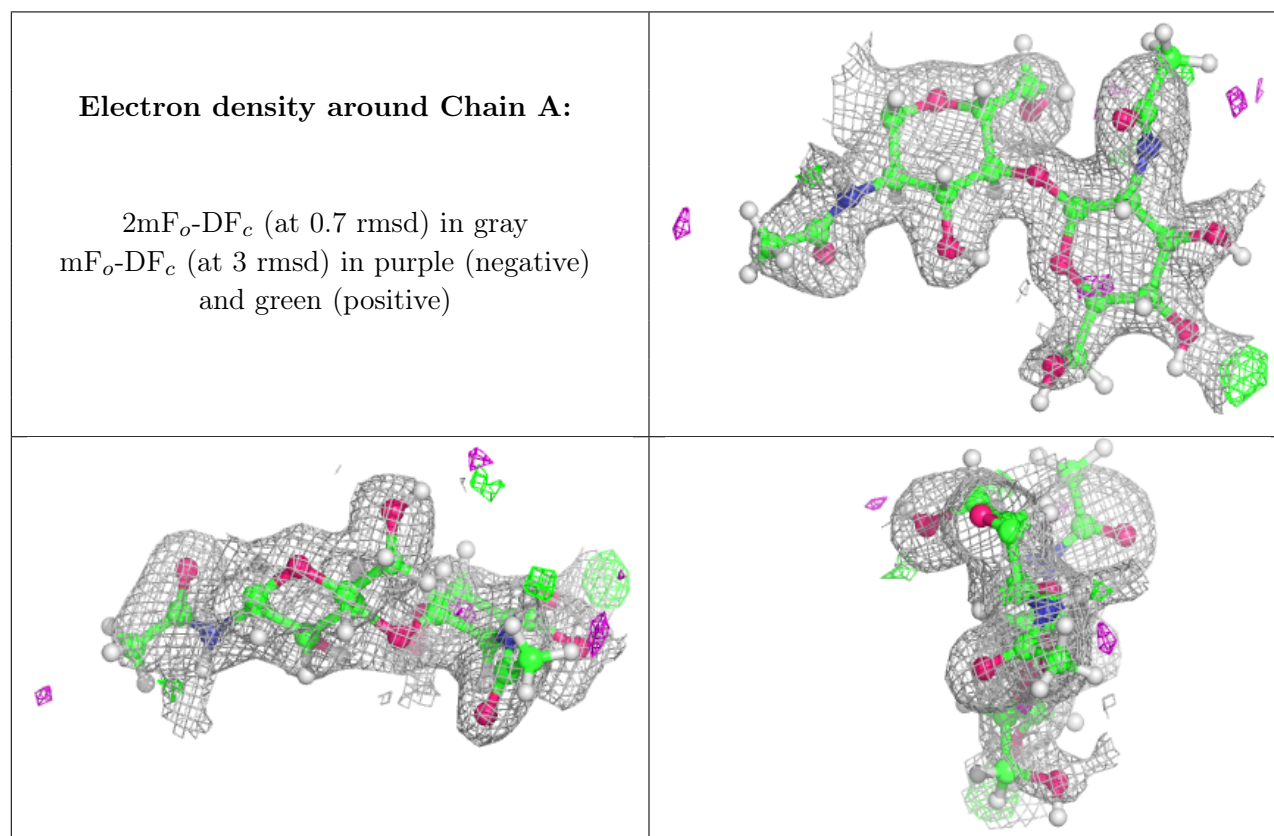
There are no non-standard protein/DNA/RNA residues in this entry.

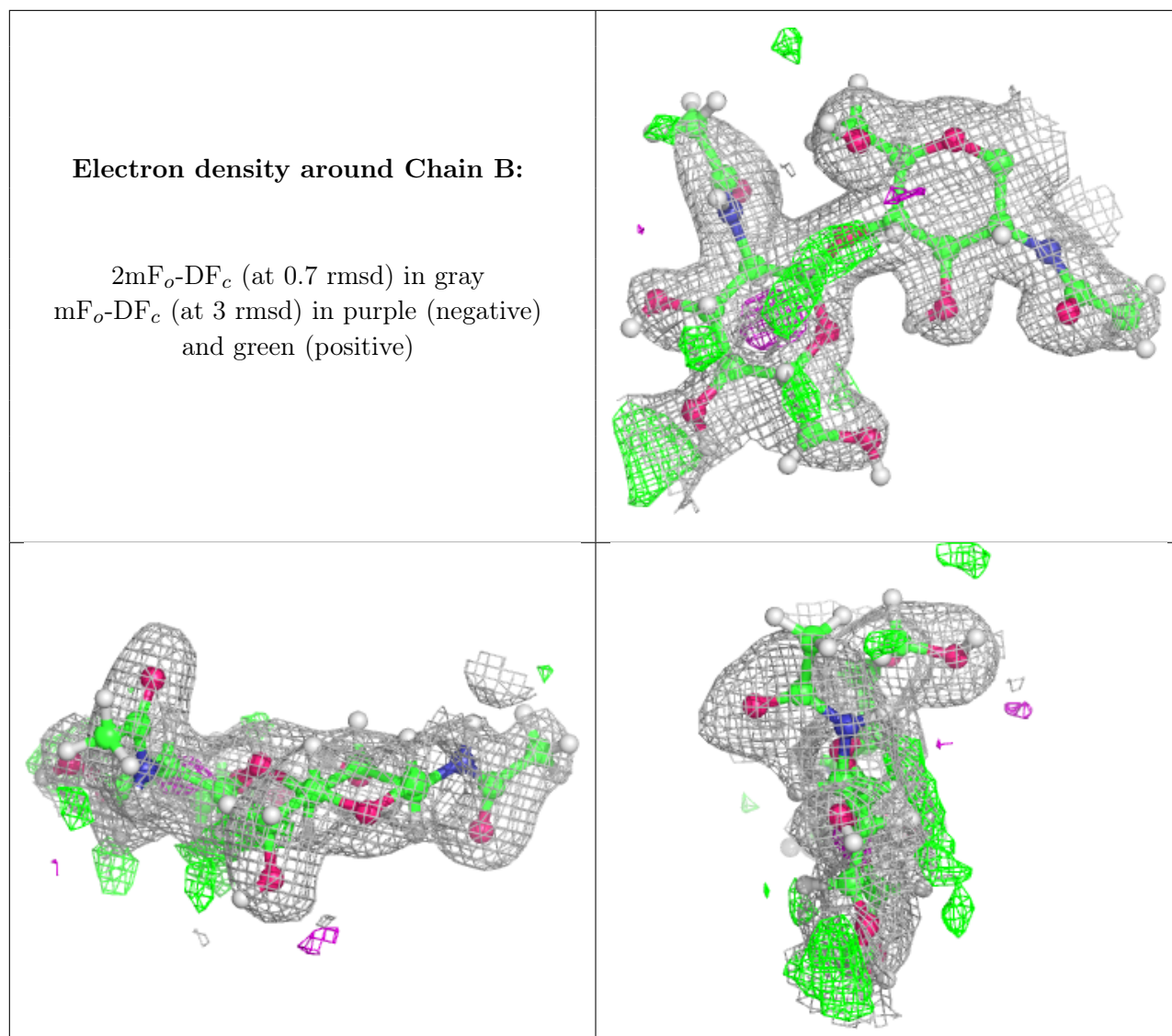
6.3 Carbohydrates [i](#)

In the following table, the Atoms column lists the number of modelled atoms in the group and the number defined in the chemical component dictionary. The B-factors column lists the minimum, median, 95th percentile and maximum values of B factors of atoms in the group. The column labelled ‘Q < 0.9’ lists the number of atoms with occupancy less than 0.9.

Mol	Type	Chain	Res	Atoms	RSCC	RSR	B-factors(\AA^2)	Q<0.9
2	NAG	B	2	14/15	0.76	0.16	43,50,56,58	3
2	NAG	A	2	14/15	0.85	0.20	42,49,53,57	3
2	NAG	B	1	14/15	0.95	0.07	25,28,30,36	2
2	NAG	A	1	14/15	0.96	0.10	26,30,34,37	2

The following is a graphical depiction of the model fit to experimental electron density for oligosaccharide. Each fit is shown from different orientation to approximate a three-dimensional view.





6.4 Ligands [i](#)

In the following table, the Atoms column lists the number of modelled atoms in the group and the number defined in the chemical component dictionary. The B-factors column lists the minimum, median, 95th percentile and maximum values of B factors of atoms in the group. The column labelled 'Q< 0.9' lists the number of atoms with occupancy less than 0.9.

Mol	Type	Chain	Res	Atoms	RSCC	RSR	B-factors(Å ²)	Q<0.9
7	EDO	AAA	518	4/4	0.58	0.16	68,71,72,73	1
6	SO4	BBB	512	5/5	0.61	0.23	103,103,107,108	0
8	GOL	BBB	522	6/6	0.67	0.17	58,64,64,65	2
7	EDO	AAA	520	4/4	0.74	0.17	51,53,54,55	1
7	EDO	BBB	516	4/4	0.75	0.26	61,65,66,66	1
7	EDO	AAA	517	4/4	0.75	0.21	43,44,47,47	1
7	EDO	AAA	513	4/4	0.76	0.17	56,59,60,60	1

Continued on next page...

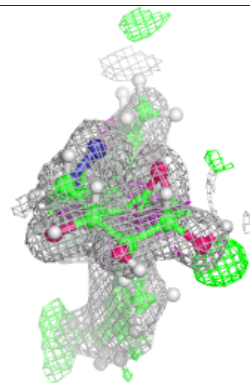
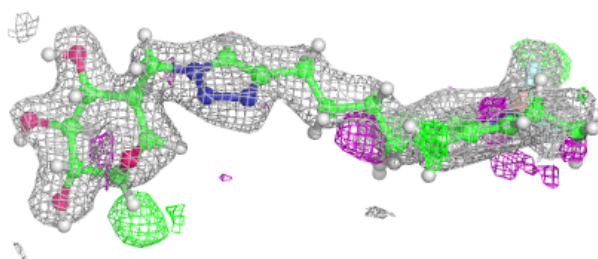
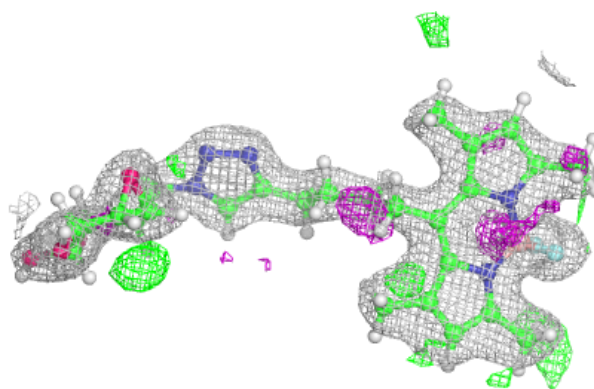
Continued from previous page...

Mol	Type	Chain	Res	Atoms	RSCC	RSR	B-factors(\AA^2)	Q<0.9
7	EDO	AAA	514	4/4	0.78	0.27	46,46,53,53	1
8	GOL	BBB	521	6/6	0.79	0.20	41,47,53,56	2
7	EDO	AAA	516	4/4	0.80	0.17	48,52,53,53	1
3	NAG	BBB	503	14/15	0.81	0.23	70,78,81,82	3
7	EDO	AAA	519	4/4	0.81	0.30	52,54,55,55	1
3	NAG	AAA	503	14/15	0.81	0.12	44,50,55,66	3
6	SO4	BBB	510	5/5	0.82	0.21	79,84,86,91	0
8	GOL	BBB	520	6/6	0.82	0.17	55,59,61,61	2
7	EDO	AAA	515	4/4	0.83	0.20	36,42,48,48	1
7	EDO	BBB	517	4/4	0.83	0.16	54,55,57,57	1
8	GOL	AAA	523	6/6	0.83	0.15	40,46,51,51	2
7	EDO	AAA	521	4/4	0.84	0.35	59,63,66,67	1
8	GOL	AAA	522	6/6	0.84	0.16	28,38,44,44	2
4	Q65	AAA	504	38/38	0.87	0.17	28,36,46,48	6
7	EDO	BBB	514	4/4	0.88	0.10	51,55,57,58	1
7	EDO	AAA	512	4/4	0.88	0.09	50,54,55,55	1
6	SO4	AAA	511	5/5	0.89	0.18	67,67,71,79	0
7	EDO	BBB	515	4/4	0.90	0.24	37,40,41,42	1
7	EDO	BBB	513	4/4	0.90	0.10	48,50,51,51	1
7	EDO	BBB	518	4/4	0.91	0.19	50,51,51,52	1
10	ACT	BBB	504	4/4	0.91	0.14	53,53,54,55	0
6	SO4	BBB	511	5/5	0.92	0.14	61,65,69,71	0
8	GOL	BBB	519	6/6	0.93	0.10	36,44,48,48	2
6	SO4	BBB	508	5/5	0.94	0.12	54,57,61,63	0
9	GAI	AAA	524	4/4	0.95	0.11	30,34,34,35	4
6	SO4	BBB	509	5/5	0.95	0.13	49,51,55,58	0
6	SO4	AAA	509	5/5	0.96	0.11	55,56,59,60	0
6	SO4	AAA	510	5/5	0.96	0.10	43,52,54,57	0
5	K35	AAA	505	18/19	0.96	0.10	17,18,42,43	4
5	K35	BBB	505	18/19	0.96	0.13	17,26,50,50	4
6	SO4	AAA	508	5/5	0.97	0.09	44,47,50,52	0
6	SO4	BBB	506	5/5	0.98	0.08	39,41,42,42	0
6	SO4	AAA	507	5/5	0.98	0.07	39,40,42,42	0
6	SO4	BBB	507	5/5	0.99	0.11	25,26,27,29	0
6	SO4	AAA	506	5/5	0.99	0.11	27,27,29,32	0

The following is a graphical depiction of the model fit to experimental electron density of all instances of the Ligand of Interest. In addition, ligands with molecular weight > 250 and outliers as shown on the geometry validation Tables will also be included. Each fit is shown from different orientation to approximate a three-dimensional view.

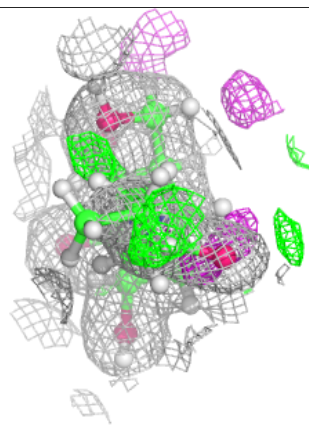
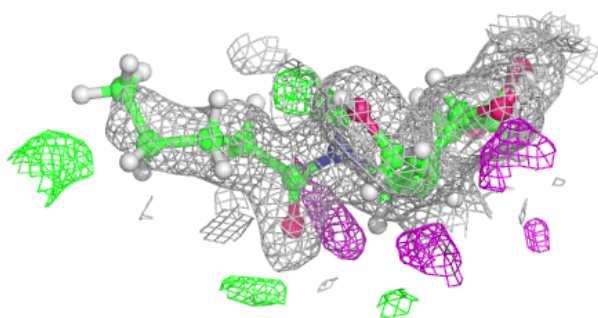
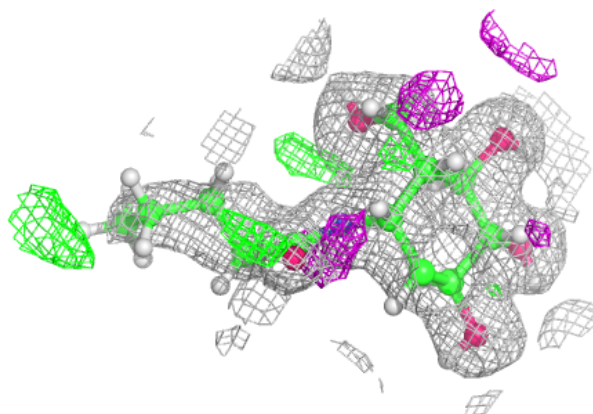
Electron density around Q65 AAA 504:

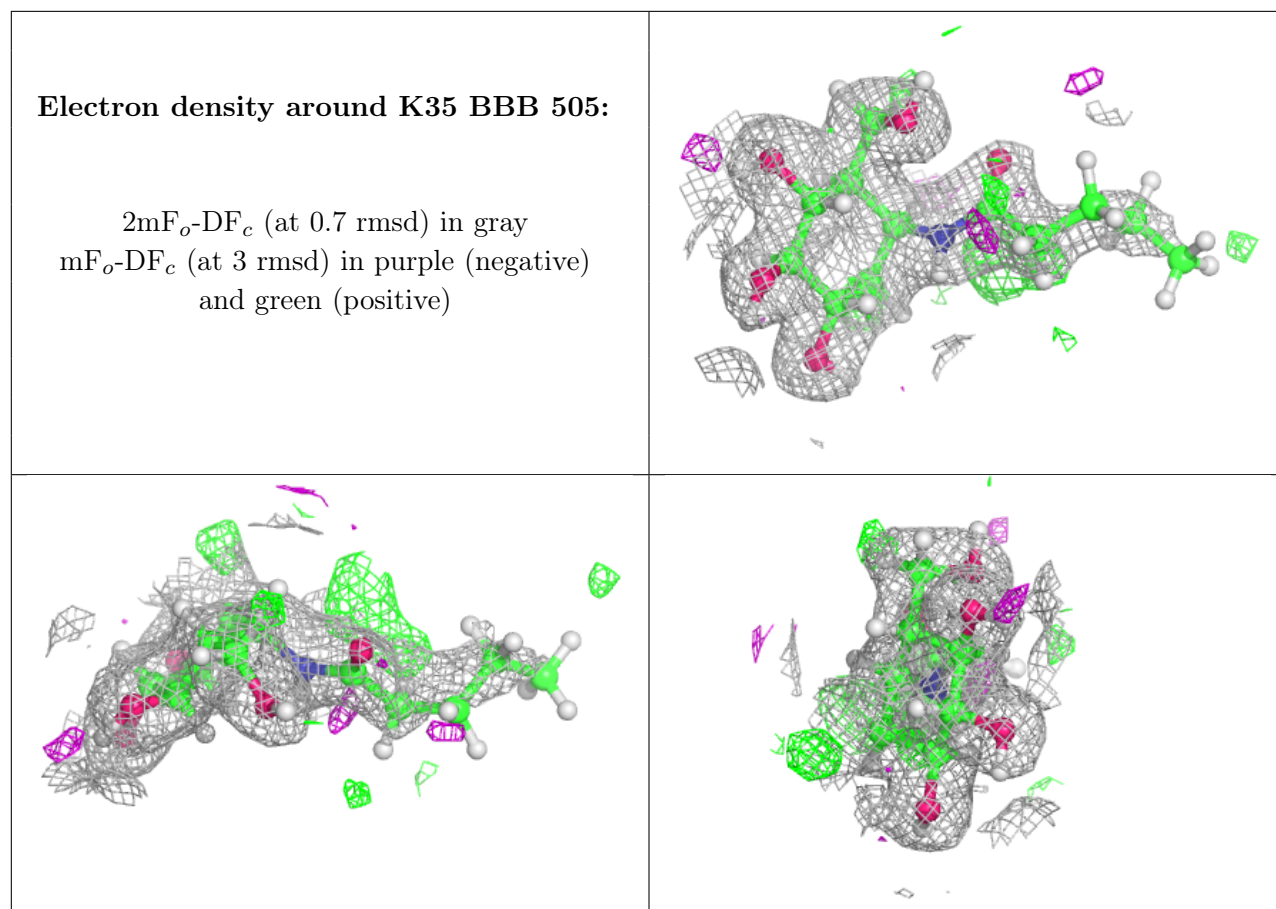
$2mF_o-DF_c$ (at 0.7 rmsd) in gray
 mF_o-DF_c (at 3 rmsd) in purple (negative)
and green (positive)



Electron density around K35 AAA 505:

$2mF_o-DF_c$ (at 0.7 rnsd) in gray
 mF_o-DF_c (at 3 rnsd) in purple (negative)
and green (positive)





6.5 Other polymers [i](#)

There are no such residues in this entry.