



# Full wwPDB X-ray Structure Validation Report ⓘ

Sep 17, 2023 – 03:09 PM EDT

PDB ID : 4Z4I  
Title : Human Argonaute2 A481T Mutant Bound to t1-G Target RNA  
Authors : Schirle, N.T.; MacRae, I.J.  
Deposited on : 2015-04-02  
Resolution : 2.80 Å(reported)

This is a Full wwPDB X-ray Structure Validation Report for a publicly released PDB entry.

We welcome your comments at [validation@mail.wwpdb.org](mailto:validation@mail.wwpdb.org)

A user guide is available at

<https://www.wwpdb.org/validation/2017/XrayValidationReportHelp>

with specific help available everywhere you see the ⓘ symbol.

The types of validation reports are described at

<http://www.wwpdb.org/validation/2017/FAQs#types>.

---

The following versions of software and data (see [references ⓘ](#)) were used in the production of this report:

MolProbity : 4.02b-467  
Mogul : 1.8.5 (274361), CSD as541be (2020)  
Xtrriage (Phenix) : 1.13  
EDS : 2.35.1  
Percentile statistics : 20191225.v01 (using entries in the PDB archive December 25th 2019)  
Refmac : 5.8.0158  
CCP4 : 7.0.044 (Gargrove)  
Ideal geometry (proteins) : Engh & Huber (2001)  
Ideal geometry (DNA, RNA) : Parkinson et al. (1996)  
Validation Pipeline (wwPDB-VP) : 2.35.1

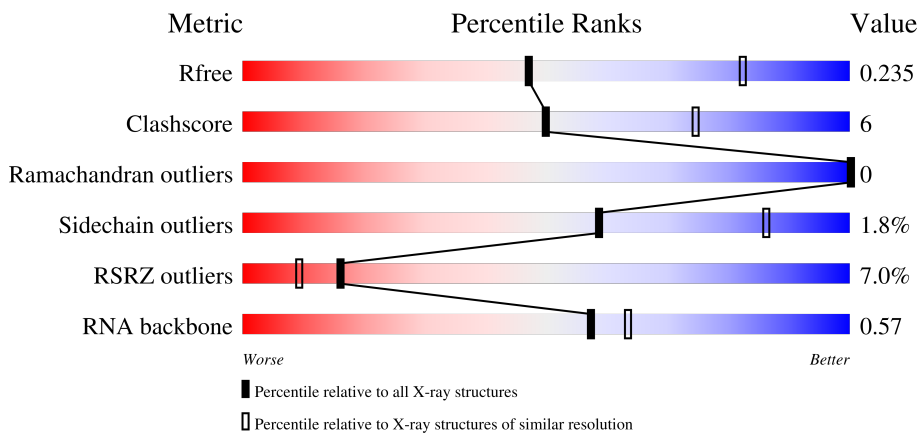
# 1 Overall quality at a glance

The following experimental techniques were used to determine the structure:

*X-RAY DIFFRACTION*

The reported resolution of this entry is 2.80 Å.

Percentile scores (ranging between 0-100) for global validation metrics of the entry are shown in the following graphic. The table shows the number of entries on which the scores are based.



Metric	Whole archive (#Entries)	Similar resolution (#Entries, resolution range(Å))
$R_{free}$	130704	3140 (2.80-2.80)
Clashscore	141614	3569 (2.80-2.80)
Ramachandran outliers	138981	3498 (2.80-2.80)
Sidechain outliers	138945	3500 (2.80-2.80)
RSRZ outliers	127900	3078 (2.80-2.80)
RNA backbone	3102	1227 (3.10-2.50)

The table below summarises the geometric issues observed across the polymeric chains and their fit to the electron density. The red, orange, yellow and green segments of the lower bar indicate the fraction of residues that contain outliers for  $\geq 3$ , 2, 1 and 0 types of geometric quality criteria respectively. A grey segment represents the fraction of residues that are not modelled. The numeric value for each fraction is indicated below the corresponding segment, with a dot representing fractions  $\leq 5\%$ . The upper red bar (where present) indicates the fraction of residues that have poor fit to the electron density. The numeric value is given above the bar.

Mol	Chain	Length	Quality of chain
1	A	859	 7% 83% 9% • 7%
2	B	21	 10% 67% 29% 5%
3	D	11	 73% 27%

## 2 Entry composition [i](#)

There are 6 unique types of molecules in this entry. The entry contains 7027 atoms, of which 0 are hydrogens and 0 are deuteriums.

In the tables below, the ZeroOcc column contains the number of atoms modelled with zero occupancy, the AltConf column contains the number of residues with at least one atom in alternate conformation and the Trace column contains the number of residues modelled with at most 2 atoms.

- Molecule 1 is a protein called Protein argonaute-2.

Mol	Chain	Residues	Atoms					ZeroOcc	AltConf	Trace
			Total	C	N	O	S			
1	A	800	6412	4084	1152	1136	40	0	0	0

There are 2 discrepancies between the modelled and reference sequences:

Chain	Residue	Modelled	Actual	Comment	Reference
A	387	ASP	SER	engineered mutation	UNP Q9UKV8
A	481	THR	ALA	engineered mutation	UNP Q9UKV8

- Molecule 2 is a RNA chain called RNA (5'-R(P\*UP\*UP\*CP\*AP\*CP\*AP\*UP\*UP\*GP\*CP\*CP\*CP\*AP\*AP\*GP\*UP\*CP\*UP\*UP\*U)-3').

Mol	Chain	Residues	Atoms					ZeroOcc	AltConf	Trace
			Total	C	N	O	P			
2	B	20	399	177	62	140	20	0	0	0

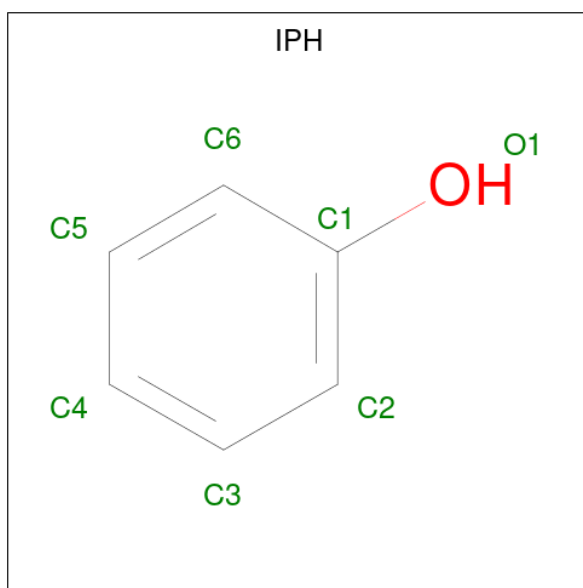
- Molecule 3 is a RNA chain called RNA (5'-R(\*CP\*AP\*AP\*UP\*GP\*UP\*GP\*A)-3').

Mol	Chain	Residues	Atoms					ZeroOcc	AltConf	Trace
			Total	C	N	O	P			
3	D	8	169	77	32	53	7	0	0	0

- Molecule 4 is MAGNESIUM ION (three-letter code: MG) (formula: Mg).

Mol	Chain	Residues	Atoms		ZeroOcc	AltConf
4	A	1	Total	Mg	0	0
			1	1		
4	B	1	Total	Mg	0	0
			1	1		
4	D	1	Total	Mg	0	0
			1	1		

- Molecule 5 is PHENOL (three-letter code: IPH) (formula: C<sub>6</sub>H<sub>6</sub>O).



Mol	Chain	Residues	Atoms	ZeroOcc	AltConf
5	A	1	Total C O 7 6 1	0	0
5	A	1	Total C O 7 6 1	0	0
5	A	1	Total C O 7 6 1	0	0

- Molecule 6 is water.

Mol	Chain	Residues	Atoms	ZeroOcc	AltConf
6	A	19	Total O 19 19	0	0
6	B	3	Total O 3 3	0	0
6	D	1	Total O 1 1	0	0



## 4 Data and refinement statistics i

Property	Value	Source
Space group	P 1 21 1	Depositor
Cell constants a, b, c, $\alpha$ , $\beta$ , $\gamma$	55.59Å 116.62Å 69.62Å 90.00° 92.42° 90.00°	Depositor
Resolution (Å)	44.69 – 2.80 44.69 – 2.80	Depositor EDS
% Data completeness (in resolution range)	99.1 (44.69-2.80) 99.2 (44.69-2.80)	Depositor EDS
$R_{merge}$	0.13	Depositor
$R_{sym}$	0.12	Depositor
$\langle I/\sigma(I) \rangle$ <sup>1</sup>	2.30 (at 2.81Å)	Xtrriage
Refinement program	PHENIX 1.9_1692	Depositor
R, $R_{free}$	0.192 , 0.233 0.200 , 0.235	Depositor DCC
$R_{free}$ test set	1064 reflections (4.91%)	wwPDB-VP
Wilson B-factor (Å <sup>2</sup> )	47.1	Xtrriage
Anisotropy	0.302	Xtrriage
Bulk solvent $k_{sol}$ (e/Å <sup>3</sup> ), $B_{sol}$ (Å <sup>2</sup> )	0.33 , 40.8	EDS
L-test for twinning <sup>2</sup>	$\langle  L  \rangle = 0.49$ , $\langle L^2 \rangle = 0.32$	Xtrriage
Estimated twinning fraction	0.044 for h,-k,-l	Xtrriage
$F_o, F_c$ correlation	0.93	EDS
Total number of atoms	7027	wwPDB-VP
Average B, all atoms (Å <sup>2</sup> )	58.0	wwPDB-VP

Xtrriage's analysis on translational NCS is as follows: *The largest off-origin peak in the Patterson function is 4.84% of the height of the origin peak. No significant pseudotranslation is detected.*

<sup>1</sup>Intensities estimated from amplitudes.

<sup>2</sup>Theoretical values of  $\langle |L| \rangle$ ,  $\langle L^2 \rangle$  for acentric reflections are 0.5, 0.333 respectively for untwinned datasets, and 0.375, 0.2 for perfectly twinned datasets.

## 5 Model quality [i](#)

### 5.1 Standard geometry [i](#)

Bond lengths and bond angles in the following residue types are not validated in this section: MG, IPH

The Z score for a bond length (or angle) is the number of standard deviations the observed value is removed from the expected value. A bond length (or angle) with  $|Z| > 5$  is considered an outlier worth inspection. RMSZ is the root-mean-square of all Z scores of the bond lengths (or angles).

Mol	Chain	Bond lengths		Bond angles	
		RMSZ	# Z  >5	RMSZ	# Z  >5
1	A	0.34	0/6563	0.47	1/8881 (0.0%)
2	B	0.56	1/441 (0.2%)	0.76	0/679
3	D	0.26	0/189	0.78	0/293
All	All	0.35	1/7193 (0.0%)	0.51	1/9853 (0.0%)

Chiral center outliers are detected by calculating the chiral volume of a chiral center and verifying if the center is modelled as a planar moiety or with the opposite hand. A planarity outlier is detected by checking planarity of atoms in a peptide group, atoms in a mainchain group or atoms of a sidechain that are expected to be planar.

Mol	Chain	#Chirality outliers	#Planarity outliers
1	A	0	1

All (1) bond length outliers are listed below:

Mol	Chain	Res	Type	Atoms	Z	Observed(Å)	Ideal(Å)
2	B	1	U	OP3-P	-10.74	1.48	1.61

All (1) bond angle outliers are listed below:

Mol	Chain	Res	Type	Atoms	Z	Observed(°)	Ideal(°)
1	A	699	GLN	C-N-CD	6.33	141.70	128.40

There are no chirality outliers.

All (1) planarity outliers are listed below:

Mol	Chain	Res	Type	Group
1	A	695	GLU	Peptide

## 5.2 Too-close contacts

In the following table, the Non-H and H(model) columns list the number of non-hydrogen atoms and hydrogen atoms in the chain respectively. The H(added) column lists the number of hydrogen atoms added and optimized by MolProbity. The Clashes column lists the number of clashes within the asymmetric unit, whereas Symm-Clashes lists symmetry-related clashes.

Mol	Chain	Non-H	H(model)	H(added)	Clashes	Symm-Clashes
1	A	6412	0	6476	79	0
2	B	399	0	203	1	0
3	D	169	0	88	0	0
4	A	1	0	0	0	0
4	B	1	0	0	0	0
4	D	1	0	0	0	0
5	A	21	0	18	0	0
6	A	19	0	0	0	0
6	B	3	0	0	0	0
6	D	1	0	0	0	0
All	All	7027	0	6785	80	0

The all-atom clashscore is defined as the number of clashes found per 1000 atoms (including hydrogen atoms). The all-atom clashscore for this structure is 6.

All (80) close contacts within the same asymmetric unit are listed below, sorted by their clash magnitude.

Atom-1	Atom-2	Interatomic distance (Å)	Clash overlap (Å)
1:A:57:TYR:CE2	1:A:108:ILE:HD13	1.53	1.42
1:A:57:TYR:HE2	1:A:108:ILE:CD1	1.63	1.10
1:A:57:TYR:CE2	1:A:108:ILE:CD1	2.32	1.08
1:A:151:LEU:HD12	1:A:152:PRO:HD2	1.04	1.04
1:A:151:LEU:CD1	1:A:152:PRO:HD2	1.89	1.03
1:A:57:TYR:HE2	1:A:108:ILE:HD13	0.77	0.91
1:A:151:LEU:HD12	1:A:152:PRO:CD	1.97	0.91
1:A:108:ILE:HG13	1:A:109:GLY:N	2.01	0.74
1:A:33:THR:HG22	1:A:33:THR:O	1.86	0.74
1:A:237:VAL:CG2	1:A:261:GLU:HG3	2.17	0.73
1:A:234:VAL:O	1:A:237:VAL:HG12	1.91	0.70
1:A:108:ILE:HG13	1:A:109:GLY:H	1.53	0.70
1:A:52:ILE:HG22	1:A:53:ASP:O	1.92	0.69
1:A:58:GLU:O	1:A:59:LEU:HD12	1.92	0.68
1:A:57:TYR:CZ	1:A:108:ILE:HD13	2.21	0.68
1:A:49:ILE:CD1	1:A:213:MET:HG3	2.24	0.67
1:A:108:ILE:HD12	1:A:134:TRP:HB2	1.77	0.65

*Continued on next page...*



*Continued from previous page...*

Atom-1	Atom-2	Interatomic distance (Å)	Clash overlap (Å)
1:A:58:GLU:C	1:A:59:LEU:HD12	2.17	0.65
1:A:237:VAL:HG21	1:A:261:GLU:HG3	1.79	0.63
1:A:307:THR:HG22	1:A:309:ALA:H	1.64	0.63
1:A:483:MET:O	1:A:483:MET:HG2	1.98	0.63
1:A:95:ASP:O	1:A:95:ASP:OD1	2.17	0.62
1:A:316:HIS:O	1:A:318:LEU:HG	2.00	0.61
1:A:237:VAL:HG23	1:A:261:GLU:HG3	1.83	0.60
1:A:310:GLN:NE2	1:A:313:LYS:HD3	2.16	0.60
1:A:477:ILE:O	1:A:481:THR:HB	2.01	0.60
1:A:389:ASN:CG	1:A:400:MET:HE3	2.22	0.58
1:A:251:THR:HG22	1:A:253:SER:H	1.67	0.58
1:A:310:GLN:HE22	1:A:313:LYS:HD3	1.70	0.56
1:A:442:PHE:CE2	1:A:481:THR:HG23	2.41	0.55
1:A:108:ILE:HD12	1:A:134:TRP:CB	2.35	0.55
1:A:49:ILE:HD12	1:A:213:MET:HG3	1.86	0.54
1:A:692:ILE:HD11	1:A:699:GLN:HE21	1.72	0.54
1:A:74:ILE:HG23	1:A:117:VAL:HG21	1.90	0.54
1:A:695:GLU:HG3	1:A:696:LYS:HB2	1.89	0.54
1:A:33:THR:O	1:A:33:THR:CG2	2.55	0.53
1:A:361:THR:O	1:A:365:ILE:HG12	2.10	0.52
1:A:695:GLU:HG2	1:A:698:TYR:HB2	1.91	0.51
1:A:389:ASN:CG	1:A:400:MET:CE	2.79	0.51
1:A:389:ASN:OD1	1:A:400:MET:HE3	2.11	0.51
1:A:59:LEU:O	1:A:60:ASP:OD1	2.30	0.50
1:A:56:HIS:NE2	1:A:99:ASN:OD1	2.45	0.50
1:A:230:VAL:O	1:A:234:VAL:HG23	2.12	0.49
1:A:695:GLU:HG3	1:A:696:LYS:CB	2.43	0.49
1:A:146:ALA:HB2	1:A:151:LEU:HD23	1.94	0.49
1:A:234:VAL:O	1:A:237:VAL:CG1	2.58	0.49
1:A:312:PHE:HD2	1:A:318:LEU:HD12	1.78	0.49
1:A:49:ILE:HD12	1:A:213:MET:CG	2.42	0.49
1:A:278:LYS:HG2	1:A:347:VAL:HG11	1.94	0.49
1:A:52:ILE:HG22	1:A:53:ASP:N	2.26	0.48
1:A:48:ASP:HB2	1:A:400:MET:HB2	1.96	0.48
1:A:267:VAL:HG12	1:A:346:ILE:HD13	1.95	0.48
1:A:243:ILE:O	1:A:244:GLU:HB3	2.15	0.47
1:A:311:TYR:O	1:A:315:ARG:HB3	2.15	0.47
1:A:57:TYR:CZ	1:A:108:ILE:CD1	2.89	0.46
1:A:307:THR:HG22	1:A:309:ALA:N	2.29	0.46
1:A:167:ARG:NH2	1:A:204:GLN:O	2.48	0.46
1:A:583:ARG:NH1	1:A:620:ALA:O	2.49	0.46

*Continued on next page...*

Continued from previous page...

Atom-1	Atom-2	Interatomic distance (Å)	Clash overlap (Å)
1:A:234:VAL:C	1:A:237:VAL:HG12	2.37	0.45
1:A:250:LEU:HD22	1:A:254:GLN:OE1	2.16	0.45
1:A:52:ILE:CG2	1:A:53:ASP:N	2.79	0.45
1:A:243:ILE:HD11	1:A:325:LEU:HD11	1.99	0.44
1:A:692:ILE:HD11	1:A:699:GLN:NE2	2.32	0.44
1:A:801:ALA:N	1:A:802:PRO:HD2	2.32	0.44
1:A:389:ASN:ND2	1:A:400:MET:CE	2.81	0.43
1:A:696:LYS:HG2	1:A:697:ASP:H	1.83	0.43
1:A:290:SER:O	1:A:307:THR:HG21	2.18	0.43
1:A:696:LYS:CG	1:A:697:ASP:H	2.32	0.43
1:A:836:GLY:O	1:A:840:GLN:HG2	2.19	0.43
1:A:368:THR:O	1:A:370:ARG:HG2	2.19	0.42
1:A:52:ILE:HG22	1:A:53:ASP:C	2.39	0.42
1:A:477:ILE:O	1:A:477:ILE:HG22	2.20	0.42
2:B:3:C:H2'	2:B:4:A:C8	2.55	0.42
1:A:387:ASP:CG	1:A:390:THR:HG21	2.41	0.41
1:A:372:ALA:HB3	1:A:373:PRO:HD3	2.02	0.41
1:A:60:ASP:HB2	1:A:131:SER:HB2	2.03	0.40
1:A:108:ILE:CD1	1:A:134:TRP:HB2	2.47	0.40
1:A:502:GLU:N	1:A:503:PRO:HD2	2.36	0.40
1:A:252:ASP:OD1	1:A:253:SER:N	2.55	0.40
1:A:268:GLU:HB3	1:A:347:VAL:HG12	2.04	0.40

There are no symmetry-related clashes.

## 5.3 Torsion angles [i](#)

### 5.3.1 Protein backbone [i](#)

In the following table, the Percentiles column shows the percent Ramachandran outliers of the chain as a percentile score with respect to all X-ray entries followed by that with respect to entries of similar resolution.

The Analysed column shows the number of residues for which the backbone conformation was analysed, and the total number of residues.

Mol	Chain	Analysed	Favoured	Allowed	Outliers	Percentiles
1	A	788/859 (92%)	756 (96%)	32 (4%)	0	<a href="#">100</a> <a href="#">100</a>

There are no Ramachandran outliers to report.

### 5.3.2 Protein sidechains [i](#)

In the following table, the Percentiles column shows the percent sidechain outliers of the chain as a percentile score with respect to all X-ray entries followed by that with respect to entries of similar resolution.

The Analysed column shows the number of residues for which the sidechain conformation was analysed, and the total number of residues.

Mol	Chain	Analysed	Rotameric	Outliers	Percentiles
1	A	708/753 (94%)	695 (98%)	13 (2%)	59 86

All (13) residues with a non-rotameric sidechain are listed below:

Mol	Chain	Res	Type
1	A	68	ARG
1	A	97	ARG
1	A	134	TRP
1	A	375	ARG
1	A	387	ASP
1	A	400	MET
1	A	424	ASN
1	A	481	THR
1	A	525	LYS
1	A	695	GLU
1	A	697	ASP
1	A	699	GLN
1	A	815	TYR

Sometimes sidechains can be flipped to improve hydrogen bonding and reduce clashes. All (3) such sidechains are listed below:

Mol	Chain	Res	Type
1	A	310	GLN
1	A	336	HIS
1	A	699	GLN

### 5.3.3 RNA [i](#)

Mol	Chain	Analysed	Backbone Outliers	Pucker Outliers
2	B	17/21 (80%)	3 (17%)	0
3	D	7/11 (63%)	0	0
All	All	24/32 (75%)	3 (12%)	0

All (3) RNA backbone outliers are listed below:

Mol	Chain	Res	Type
2	B	16	U
2	B	17	C
2	B	21	U

There are no RNA pucker outliers to report.

## 5.4 Non-standard residues in protein, DNA, RNA chains [i](#)

There are no non-standard protein/DNA/RNA residues in this entry.

## 5.5 Carbohydrates [i](#)

There are no monosaccharides in this entry.

## 5.6 Ligand geometry [i](#)

Of 6 ligands modelled in this entry, 3 are monoatomic - leaving 3 for Mogul analysis.

In the following table, the Counts columns list the number of bonds (or angles) for which Mogul statistics could be retrieved, the number of bonds (or angles) that are observed in the model and the number of bonds (or angles) that are defined in the Chemical Component Dictionary. The Link column lists molecule types, if any, to which the group is linked. The Z score for a bond length (or angle) is the number of standard deviations the observed value is removed from the expected value. A bond length (or angle) with  $|Z| > 2$  is considered an outlier worth inspection. RMSZ is the root-mean-square of all Z scores of the bond lengths (or angles).

Mol	Type	Chain	Res	Link	Bond lengths			Bond angles		
					Counts	RMSZ	$\# Z  > 2$	Counts	RMSZ	$\# Z  > 2$
5	IPH	A	902	-	7,7,7	0.33	0	8,8,8	0.26	0
5	IPH	A	903	-	7,7,7	0.35	0	8,8,8	0.25	0
5	IPH	A	904	-	7,7,7	0.39	0	8,8,8	0.24	0

In the following table, the Chirals column lists the number of chiral outliers, the number of chiral centers analysed, the number of these observed in the model and the number defined in the Chemical Component Dictionary. Similar counts are reported in the Torsion and Rings columns. '-' means no outliers of that kind were identified.

Mol	Type	Chain	Res	Link	Chirals	Torsions	Rings
5	IPH	A	902	-	-	-	0/1/1/1
5	IPH	A	903	-	-	-	0/1/1/1

*Continued on next page...*

*Continued from previous page...*

Mol	Type	Chain	Res	Link	Chirals	Torsions	Rings
5	IPH	A	904	-	-	-	0/1/1/1

There are no bond length outliers.

There are no bond angle outliers.

There are no chirality outliers.

There are no torsion outliers.

There are no ring outliers.

No monomer is involved in short contacts.

## 5.7 Other polymers [i](#)

There are no such residues in this entry.

## 5.8 Polymer linkage issues [i](#)

There are no chain breaks in this entry.

## 6 Fit of model and data

### 6.1 Protein, DNA and RNA chains

In the following table, the column labelled ‘#RSRZ > 2’ contains the number (and percentage) of RSRZ outliers, followed by percent RSRZ outliers for the chain as percentile scores relative to all X-ray entries and entries of similar resolution. The OWAB column contains the minimum, median, 95<sup>th</sup> percentile and maximum values of the occupancy-weighted average B-factor per residue. The column labelled ‘Q < 0.9’ lists the number of (and percentage) of residues with an average occupancy less than 0.9.

Mol	Chain	Analysed	<RSRZ>	#RSRZ>2	OWAB(Å <sup>2</sup> )	Q<0.9
1	A	800/859 (93%)	0.12	56 (7%) 16 9	20, 46, 128, 168	0
2	B	20/21 (95%)	0.15	2 (10%) 7 4	25, 54, 172, 176	0
3	D	8/11 (72%)	-0.48	0 100 100	33, 38, 46, 49	0
All	All	828/891 (92%)	0.11	58 (7%) 16 9	20, 46, 128, 176	0

All (58) RSRZ outliers are listed below:

Mol	Chain	Res	Type	RSRZ
1	A	331	GLY	5.1
1	A	117	VAL	4.9
1	A	295	PRO	4.6
1	A	313	LYS	4.5
1	A	142	ALA	4.5
1	A	314	ASP	4.3
1	A	61	ILE	3.9
1	A	333	GLU	3.9
1	A	64	GLU	3.8
1	A	149	GLY	3.8
1	A	116	GLU	3.7
1	A	115	LEU	3.5
1	A	336	HIS	3.5
1	A	110	ARG	3.5
1	A	59	LEU	3.4
1	A	120	PRO	3.4
2	B	21	U	3.3
1	A	395	ARG	3.2
2	B	20	U	3.2
1	A	334	GLN	3.1
1	A	87	PHE	3.1
1	A	130	VAL	3.1
1	A	423	ARG	3.1

*Continued on next page...*

*Continued from previous page...*

Mol	Chain	Res	Type	RSRZ
1	A	294	PHE	3.0
1	A	81	HIS	3.0
1	A	279	TYR	3.0
1	A	332	GLN	2.8
1	A	335	LYS	2.7
1	A	312	PHE	2.7
1	A	287	ARG	2.7
1	A	23	PHE	2.7
1	A	246	GLN	2.6
1	A	316	HIS	2.6
1	A	88	GLY	2.6
1	A	337	THR	2.6
1	A	22	ALA	2.6
1	A	321	ARG	2.6
1	A	141	GLN	2.6
1	A	113	VAL	2.5
1	A	154	VAL	2.5
1	A	119	LEU	2.5
1	A	424	ASN	2.5
1	A	128	PHE	2.4
1	A	244	GLU	2.4
1	A	327	CYS	2.3
1	A	328	LEU	2.3
1	A	85	GLN	2.3
1	A	322	TYR	2.3
1	A	311	TYR	2.3
1	A	134	TRP	2.3
1	A	251	THR	2.2
1	A	291	HIS	2.2
1	A	143	LEU	2.1
1	A	326	PRO	2.1
1	A	319	VAL	2.0
1	A	398	GLY	2.0
1	A	114	GLU	2.0
1	A	111	ASP	2.0

## 6.2 Non-standard residues in protein, DNA, RNA chains

There are no non-standard protein/DNA/RNA residues in this entry.

### 6.3 Carbohydrates [i](#)

There are no monosaccharides in this entry.

### 6.4 Ligands [i](#)

In the following table, the Atoms column lists the number of modelled atoms in the group and the number defined in the chemical component dictionary. The B-factors column lists the minimum, median, 95<sup>th</sup> percentile and maximum values of B factors of atoms in the group. The column labelled 'Q< 0.9' lists the number of atoms with occupancy less than 0.9.

Mol	Type	Chain	Res	Atoms	RSCC	RSR	B-factors(Å <sup>2</sup> )	Q<0.9
5	IPH	A	902	7/7	0.85	0.31	47,48,53,57	0
5	IPH	A	903	7/7	0.90	0.28	40,40,43,47	0
5	IPH	A	904	7/7	0.93	0.21	50,52,53,53	0
4	MG	B	101	1/1	0.94	0.22	61,61,61,61	0
4	MG	D	101	1/1	0.96	0.23	39,39,39,39	0
4	MG	A	901	1/1	0.97	0.21	23,23,23,23	0

### 6.5 Other polymers [i](#)

There are no such residues in this entry.