



Full wwPDB EM Validation Report ⓘ

Dec 17, 2022 – 12:19 pm GMT

PDB ID : 6Z6P
EMDB ID : EMD-11102
Title : HDAC-PC-Nuc
Authors : Lee, J.-H.; Bollschweiler, D.; Schaefer, T.; Huber, R.
Deposited on : 2020-05-28
Resolution : 4.43 Å (reported)

This is a Full wwPDB EM Validation Report for a publicly released PDB entry.

We welcome your comments at validation@mail.wwpdb.org

A user guide is available at

<https://www.wwpdb.org/validation/2017/EMValidationReportHelp>

with specific help available everywhere you see the ⓘ symbol.

The types of validation reports are described at

<http://www.wwpdb.org/validation/2017/FAQs#types>.

The following versions of software and data (see [references ⓘ](#)) were used in the production of this report:

EMDB validation analysis : 0.0.1.dev43
MolProbity : 4.02b-467
Percentile statistics : 20191225.v01 (using entries in the PDB archive December 25th 2019)
MapQ : 1.9.9
Ideal geometry (proteins) : Engh & Huber (2001)
Ideal geometry (DNA, RNA) : Parkinson et al. (1996)
Validation Pipeline (wwPDB-VP) : 2.31.3

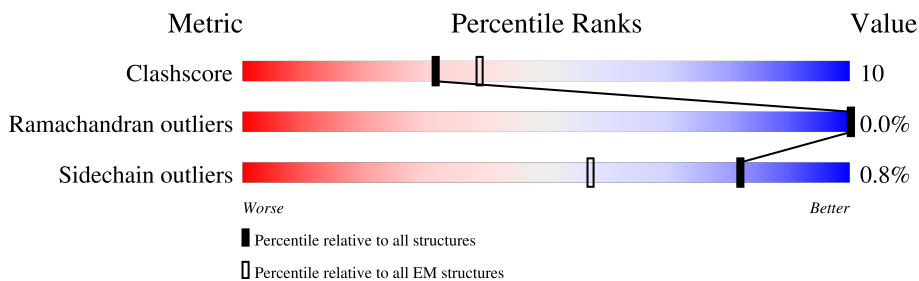
1 Overall quality at a glance i

The following experimental techniques were used to determine the structure:

ELECTRON MICROSCOPY

The reported resolution of this entry is 4.43 Å.

Percentile scores (ranging between 0-100) for global validation metrics of the entry are shown in the following graphic. The table shows the number of entries on which the scores are based.



Metric	Whole archive (#Entries)	EM structures (#Entries)
Clashscore	158937	4297
Ramachandran outliers	154571	4023
Sidechain outliers	154315	3826

The table below summarises the geometric issues observed across the polymeric chains and their fit to the map. The red, orange, yellow and green segments of the bar indicate the fraction of residues that contain outliers for ≥ 3 , 2, 1 and 0 types of geometric quality criteria respectively. A grey segment represents the fraction of residues that are not modelled. The numeric value for each fraction is indicated below the corresponding segment, with a dot representing fractions $\leq 5\%$. The upper red bar (where present) indicates the fraction of residues that have poor fit to the EM map (all-atom inclusion $< 40\%$). The numeric value is given above the bar.

Mol	Chain	Length	Quality of chain
1	K	661	
2	L	672	
3	M	543	
4	N	629	
5	A	97	
6	B	83	
7	C	103	
8	D	95	

Continued on next page...

Continued from previous page...

Mol	Chain	Length	Quality of chain
9	E	97	 78% 22%
10	F	78	 76% 24%
11	G	105	 75% 25%
12	H	93	 65% 33%
13	I	145	 54% 43%
14	J	145	 50% 43% 8%

2 Entry composition [i](#)

There are 15 unique types of molecules in this entry. The entry contains 31115 atoms, of which 0 are hydrogens and 0 are deuteriums.

In the tables below, the AltConf column contains the number of residues with at least one atom in alternate conformation and the Trace column contains the number of residues modelled with at most 2 atoms.

- Molecule 1 is a protein called Histone deacetylase HDA1.

Mol	Chain	Residues	Atoms					AltConf	Trace
			Total	C	N	O	S		
1	K	651	5178	3303	876	972	27	0	0

- Molecule 2 is a protein called Histone deacetylase HDA1.

Mol	Chain	Residues	Atoms					AltConf	Trace
			Total	C	N	O	S		
2	L	661	5245	3339	883	995	28	0	0

- Molecule 3 is a protein called HDA1 complex subunit 3,HDA1 complex subunit 3.

Mol	Chain	Residues	Atoms					AltConf	Trace
			Total	C	N	O	S		
3	M	534	4376	2765	737	854	20	0	0

- Molecule 4 is a protein called HDA1 complex subunit 2.

Mol	Chain	Residues	Atoms					AltConf	Trace
			Total	C	N	O	S		
4	N	541	4416	2801	759	843	13	0	0

- Molecule 5 is a protein called Histone H3.

Mol	Chain	Residues	Atoms					AltConf	Trace
			Total	C	N	O	S		
5	A	97	802	506	155	138	3	0	0

- Molecule 6 is a protein called Histone H4.

Mol	Chain	Residues	Atoms					AltConf	Trace
			Total	C	N	O	S		
6	B	83	662	418	129	114	1	0	0

- Molecule 7 is a protein called Histone H2A.

Mol	Chain	Residues	Atoms				AltConf	Trace
			Total	C	N	O		
7	C	103	795	501	155	139	0	0

- Molecule 8 is a protein called Histone H2B.

Mol	Chain	Residues	Atoms					AltConf	Trace
			Total	C	N	O	S		
8	D	95	745	469	134	140	2	0	0

- Molecule 9 is a protein called Histone H3.2.

Mol	Chain	Residues	Atoms					AltConf	Trace
			Total	C	N	O	S		
9	E	97	801	504	155	139	3	0	0

There is a discrepancy between the modelled and reference sequences:

Chain	Residue	Modelled	Actual	Comment	Reference
E	102	ALA	GLY	conflict	UNP P84233

- Molecule 10 is a protein called Histone H4.

Mol	Chain	Residues	Atoms					AltConf	Trace
			Total	C	N	O	S		
10	F	78	619	391	120	107	1	0	0

- Molecule 11 is a protein called Histone H2A type 1.

Mol	Chain	Residues	Atoms				AltConf	Trace
			Total	C	N	O		
11	G	105	809	510	158	141	0	0

There is a discrepancy between the modelled and reference sequences:

Chain	Residue	Modelled	Actual	Comment	Reference
G	99	ARG	GLY	conflict	UNP P06897

- Molecule 12 is a protein called Histone H2B.

Mol	Chain	Residues	Atoms					AltConf	Trace
12	H	93	Total	C	N	O	S	0	0
			726	457	130	137	2		

- Molecule 13 is a DNA chain called DNA (145-MER).

Mol	Chain	Residues	Atoms					AltConf	Trace
13	I	145	Total	C	N	O	P	0	0
			2952	1404	537	867	144		

- Molecule 14 is a DNA chain called DNA (145-MER).

Mol	Chain	Residues	Atoms					AltConf	Trace
14	J	145	Total	C	N	O	P	0	0
			2987	1416	558	869	144		

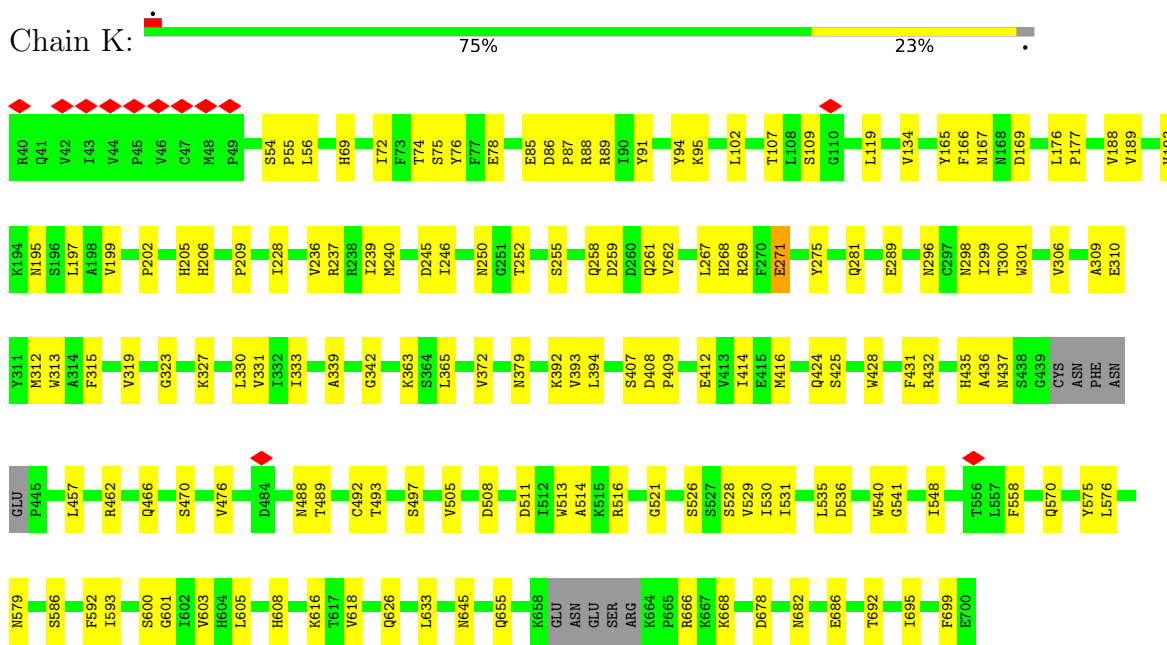
- Molecule 15 is ZINC ION (three-letter code: ZN) (formula: Zn) (labeled as "Ligand of Interest" by depositor).

Mol	Chain	Residues	Atoms		AltConf
15	K	1	Total	Zn	0
			1	1	
15	L	1	Total	Zn	0
			1	1	

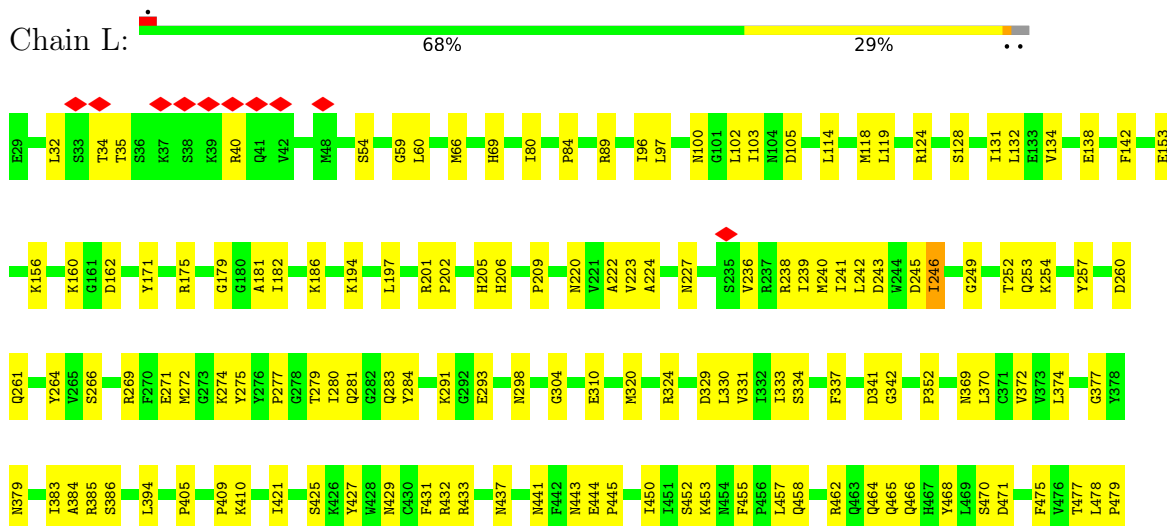
3 Residue-property plots

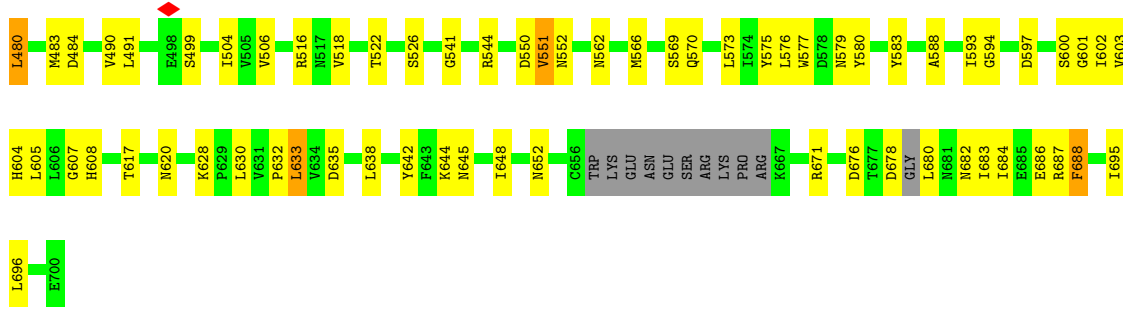
These plots are drawn for all protein, RNA, DNA and oligosaccharide chains in the entry. The first graphic for a chain summarises the proportions of the various outlier classes displayed in the second graphic. The second graphic shows the sequence view annotated by issues in geometry and atom inclusion in map density. Residues are color-coded according to the number of geometric quality criteria for which they contain at least one outlier: green = 0, yellow = 1, orange = 2 and red = 3 or more. A red diamond above a residue indicates a poor fit to the EM map for this residue (all-atom inclusion < 40%). Stretches of 2 or more consecutive residues without any outlier are shown as a green connector. Residues present in the sample, but not in the model, are shown in grey.

- Molecule 1: Histone deacetylase HDA1

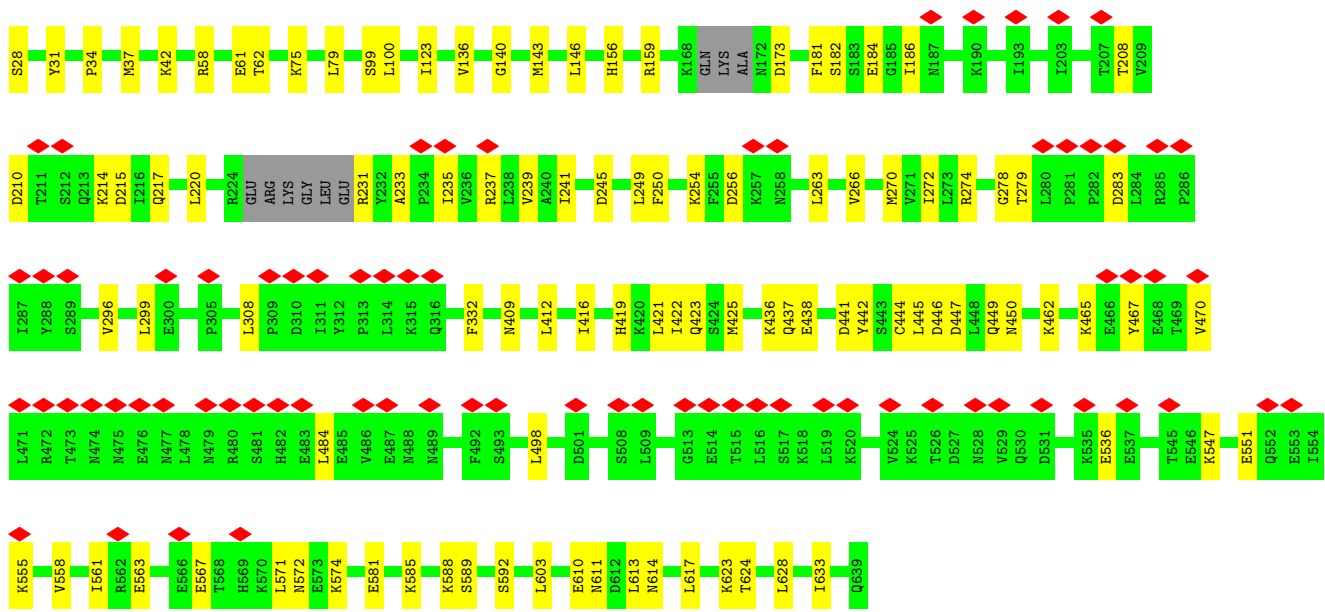
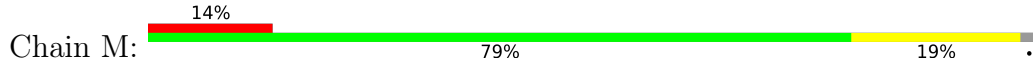


- Molecule 2: Histone deacetylase HDA1

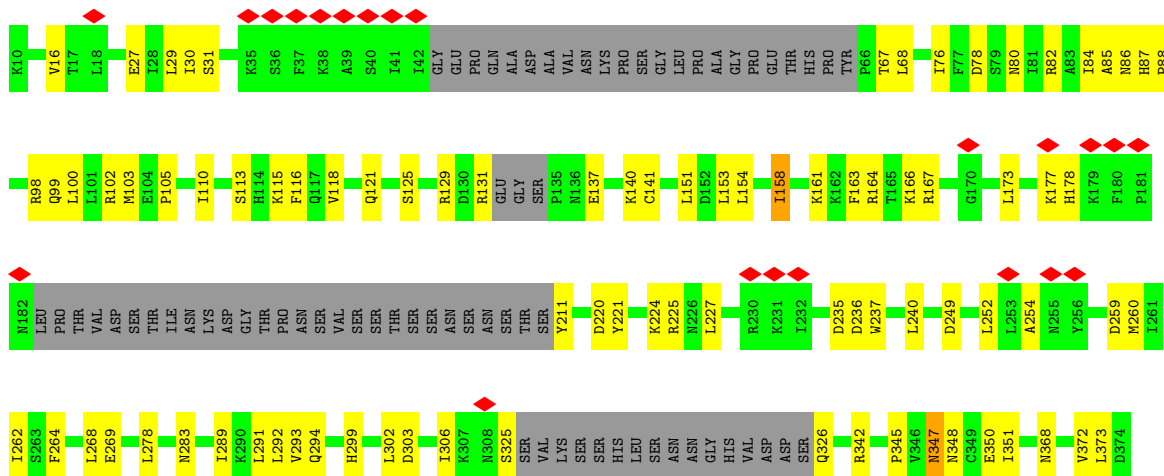


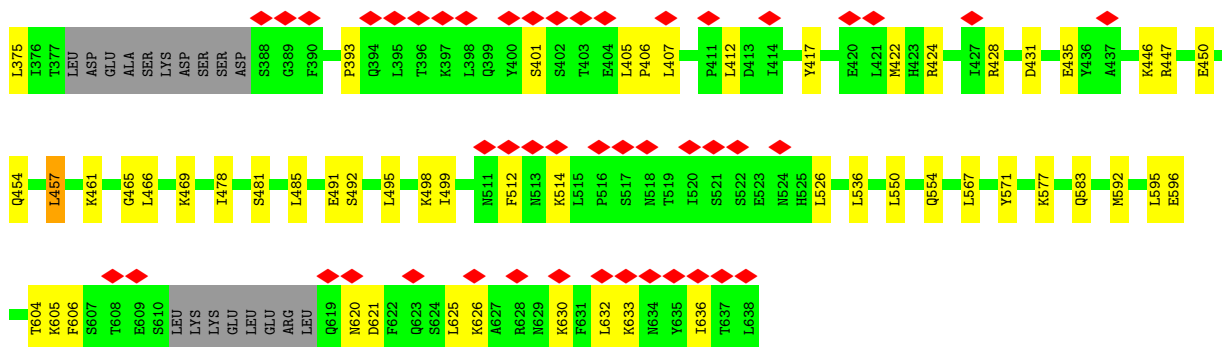


• Molecule 3: HDA1 complex subunit 3, HDA1 complex subunit 3



• Molecule 4: HDA1 complex subunit 2





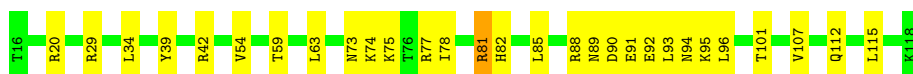
• Molecule 5: Histone H3



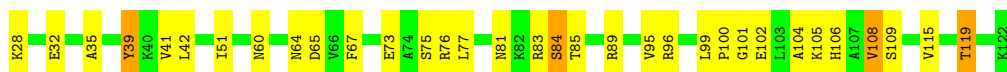
• Molecule 6: Histone H4



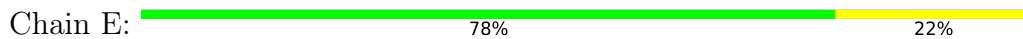
• Molecule 7: Histone H2A



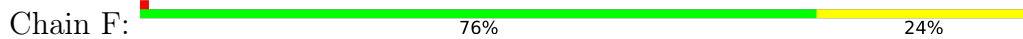
• Molecule 8: Histone H2B

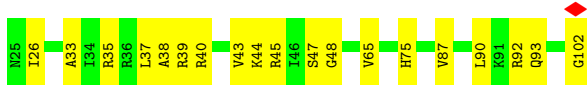


• Molecule 9: Histone H3.2

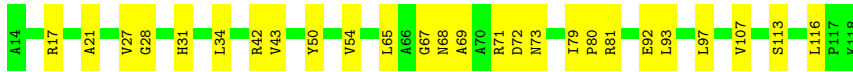
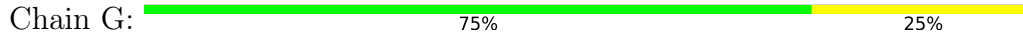


• Molecule 10: Histone H4





• Molecule 11: Histone H2A type 1



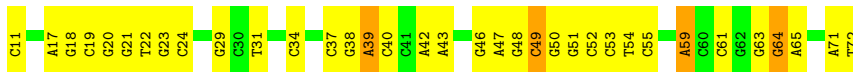
• Molecule 12: Histone H2B



• Molecule 13: DNA (145-MER)



• Molecule 14: DNA (145-MER)



4 Experimental information

Property	Value	Source
EM reconstruction method	SINGLE PARTICLE	Depositor
Imposed symmetry	POINT, C1	Depositor
Number of particles used	41279	Depositor
Resolution determination method	FSC 0.143 CUT-OFF	Depositor
CTF correction method	NONE	Depositor
Microscope	FEI TITAN KRIOS	Depositor
Voltage (kV)	300	Depositor
Electron dose ($e^-/\text{\AA}^2$)	77.2	Depositor
Minimum defocus (nm)	Not provided	
Maximum defocus (nm)	Not provided	
Magnification	Not provided	
Image detector	GATAN K3 BIOQUANTUM (6k x 4k)	Depositor
Maximum map value	0.271	Depositor
Minimum map value	-0.061	Depositor
Average map value	-0.000	Depositor
Map value standard deviation	0.008	Depositor
Recommended contour level	0.035	Depositor
Map size (\AA)	459.64798, 459.64798, 459.64798	wwPDB
Map dimensions	540, 540, 540	wwPDB
Map angles ($^\circ$)	90.0, 90.0, 90.0	wwPDB
Pixel spacing (\AA)	0.8512, 0.8512, 0.8512	Depositor

5 Model quality [i](#)

5.1 Standard geometry [i](#)

Bond lengths and bond angles in the following residue types are not validated in this section:
ZN

The Z score for a bond length (or angle) is the number of standard deviations the observed value is removed from the expected value. A bond length (or angle) with $|Z| > 5$ is considered an outlier worth inspection. RMSZ is the root-mean-square of all Z scores of the bond lengths (or angles).

Mol	Chain	Bond lengths		Bond angles	
		RMSZ	# Z >5	RMSZ	# Z >5
1	K	0.45	0/5301	0.83	6/7189 (0.1%)
2	L	0.44	0/5366	0.84	14/7277 (0.2%)
3	M	0.39	0/4449	0.79	6/5997 (0.1%)
4	N	0.39	0/4486	0.84	12/6037 (0.2%)
5	A	0.43	0/814	0.82	2/1092 (0.2%)
6	B	0.42	0/669	0.81	0/894
7	C	0.40	0/805	0.73	0/1088
8	D	0.48	0/756	0.92	4/1015 (0.4%)
9	E	0.39	0/812	0.79	1/1088 (0.1%)
10	F	0.42	0/626	0.83	0/837
11	G	0.40	0/819	0.77	0/1106
12	H	0.43	0/737	0.84	3/993 (0.3%)
13	I	1.24	10/3308 (0.3%)	1.47	54/5099 (1.1%)
14	J	1.24	6/3354 (0.2%)	1.50	78/5180 (1.5%)
All	All	0.68	16/32302 (0.0%)	1.01	180/44892 (0.4%)

Chiral center outliers are detected by calculating the chiral volume of a chiral center and verifying if the center is modelled as a planar moiety or with the opposite hand. A planarity outlier is detected by checking planarity of atoms in a peptide group, atoms in a mainchain group or atoms of a sidechain that are expected to be planar.

Mol	Chain	#Chirality outliers	#Planarity outliers
1	K	0	3
2	L	0	5
3	M	0	3
4	N	0	7
6	B	0	2
7	C	0	1
8	D	0	1
10	F	0	1
All	All	0	23

All (16) bond length outliers are listed below:

Mol	Chain	Res	Type	Atoms	Z	Observed(Å)	Ideal(Å)
14	J	-55	DA	C3'-O3'	-8.28	1.33	1.44
13	I	66	DC	C3'-O3'	6.41	1.52	1.44
13	I	-63	DC	C3'-O3'	5.99	1.51	1.44
14	J	64	DG	C3'-O3'	5.99	1.51	1.44
13	I	-48	DC	N1-C6	-5.80	1.33	1.37
13	I	-19	DG	N9-C4	-5.60	1.33	1.38
13	I	-22	DA	N9-C4	-5.60	1.34	1.37
13	I	-55	DG	C3'-O3'	-5.40	1.36	1.44
14	J	42	DA	N9-C4	-5.37	1.34	1.37
14	J	-6	DG	C3'-O3'	-5.26	1.37	1.44
13	I	65	DA	C3'-O3'	5.22	1.50	1.44
13	I	32	DA	C3'-O3'	5.19	1.50	1.44
14	J	-49	DG	N9-C4	-5.18	1.33	1.38
13	I	-32	DC	C3'-O3'	-5.10	1.37	1.44
14	J	20	DG	C3'-O3'	-5.07	1.37	1.44
13	I	67	DA	C3'-O3'	5.03	1.50	1.44

All (180) bond angle outliers are listed below:

Mol	Chain	Res	Type	Atoms	Z	Observed(°)	Ideal(°)
13	I	-35	DA	O4'-C1'-N9	-11.78	99.75	108.00
8	D	65	ASP	CB-CG-OD1	10.11	127.40	118.30
14	J	-63	DT	O4'-C1'-N1	9.11	114.38	108.00
14	J	46	DG	OP1-P-O3'	9.10	125.23	105.20
13	I	-53	DG	OP2-P-O3'	8.54	123.98	105.20
13	I	-53	DG	P-O3'-C3'	8.49	129.88	119.70
13	I	-49	DG	O4'-C1'-N9	8.40	113.88	108.00
14	J	50	DG	OP2-P-O3'	8.39	123.67	105.20
14	J	47	DA	O4'-C1'-N9	-8.33	102.17	108.00
14	J	50	DG	O4'-C1'-N9	-8.23	102.24	108.00
1	K	457	LEU	CA-CB-CG	8.15	134.05	115.30
13	I	37	DC	O4'-C1'-N1	-8.13	102.31	108.00
13	I	32	DA	O4'-C1'-N9	8.10	113.67	108.00
13	I	10	DC	O4'-C1'-N1	8.01	113.61	108.00
3	M	272	ILE	CG1-CB-CG2	-7.95	93.91	111.40
14	J	51	DG	OP2-P-O3'	7.93	122.64	105.20
4	N	595	LEU	CA-CB-CG	7.84	133.33	115.30
4	N	412	LEU	CA-CB-CG	7.84	133.33	115.30
14	J	-53	DA	OP2-P-O3'	7.83	122.43	105.20
13	I	-11	DG	OP2-P-O3'	7.75	122.25	105.20
14	J	4	DG	OP2-P-O3'	7.72	122.18	105.20
14	J	-71	DT	O4'-C1'-N1	7.70	113.39	108.00

Continued on next page...

Continued from previous page...

Mol	Chain	Res	Type	Atoms	Z	Observed(°)	Ideal(°)
14	J	-21	DG	P-O3'-C3'	7.69	128.93	119.70
13	I	66	DC	OP2-P-O3'	7.50	121.69	105.20
2	L	484	ASP	CB-CG-OD1	7.45	125.00	118.30
1	K	199	VAL	CG1-CB-CG2	-7.41	99.04	110.90
13	I	4	DC	O4'-C1'-N1	-7.27	102.91	108.00
4	N	373	LEU	CA-CB-CG	7.18	131.82	115.30
14	J	64	DG	O5'-P-OP2	7.13	119.26	110.70
14	J	-52	DC	O4'-C1'-N1	7.13	112.99	108.00
3	M	279	THR	C-N-CA	7.09	139.42	121.70
13	I	66	DC	P-O3'-C3'	7.08	128.20	119.70
14	J	-33	DG	P-O3'-C3'	7.07	128.18	119.70
14	J	59	DA	O4'-C1'-N9	6.99	112.89	108.00
13	I	-37	DG	OP1-P-O3'	6.96	120.52	105.20
14	J	63	DG	P-O3'-C3'	6.92	128.00	119.70
14	J	54	DT	P-O3'-C3'	6.88	127.95	119.70
14	J	39	DA	O5'-P-OP1	-6.86	99.53	105.70
13	I	43	DT	O4'-C1'-N1	6.77	112.74	108.00
13	I	54	DG	OP2-P-O3'	6.72	119.98	105.20
14	J	-60	DA	OP2-P-O3'	6.67	119.88	105.20
14	J	-27	DC	O4'-C1'-N1	6.66	112.66	108.00
13	I	-63	DC	P-O3'-C3'	6.64	127.67	119.70
14	J	46	DG	P-O3'-C3'	6.63	127.66	119.70
14	J	-17	DT	OP1-P-O3'	6.62	119.75	105.20
8	D	67	PHE	CB-CG-CD1	6.61	125.42	120.80
13	I	-31	DA	OP2-P-O3'	6.60	119.72	105.20
13	I	43	DT	P-O3'-C3'	6.57	127.59	119.70
14	J	64	DG	P-O3'-C3'	6.57	127.58	119.70
14	J	34	DC	P-O3'-C3'	6.54	127.54	119.70
2	L	583	TYR	C-N-CA	6.53	138.02	121.70
13	I	26	DG	O4'-C1'-N9	-6.53	103.43	108.00
5	A	72	ARG	NE-CZ-NH1	6.50	123.55	120.30
14	J	71	DA	OP2-P-O3'	6.46	119.42	105.20
5	A	65	LEU	CA-CB-CG	6.45	130.12	115.30
13	I	67	DA	O4'-C1'-N9	-6.43	103.50	108.00
12	H	65	ASP	CB-CG-OD1	6.43	124.09	118.30
14	J	-1	DA	OP2-P-O3'	6.42	119.31	105.20
14	J	39	DA	OP2-P-O3'	6.40	119.27	105.20
14	J	-18	DG	OP2-P-O3'	6.40	119.27	105.20
14	J	-19	DG	O4'-C1'-N9	-6.39	103.52	108.00
13	I	29	DA	OP2-P-O3'	6.37	119.22	105.20
14	J	-63	DT	C1'-O4'-C4'	-6.34	103.76	110.10
13	I	47	DG	O4'-C1'-N9	-6.32	103.58	108.00

Continued on next page...

Continued from previous page...

Mol	Chain	Res	Type	Atoms	Z	Observed(°)	Ideal(°)
14	J	55	DC	O5'-P-OP2	6.29	118.24	110.70
12	H	99	LEU	CA-CB-CG	6.28	129.75	115.30
13	I	46	DA	OP1-P-O3'	6.24	118.93	105.20
4	N	158	ILE	CG1-CB-CG2	-6.24	97.68	111.40
14	J	-50	DT	OP2-P-O3'	6.22	118.88	105.20
4	N	457	LEU	CA-CB-CG	6.19	129.53	115.30
3	M	283	ASP	CB-CG-OD1	6.17	123.85	118.30
4	N	268	LEU	CA-CB-CG	6.16	129.46	115.30
14	J	11	DC	OP2-P-O3'	6.14	118.72	105.20
13	I	-51	DC	P-O3'-C3'	6.13	127.06	119.70
13	I	-69	DA	OP2-P-O3'	6.10	118.61	105.20
13	I	23	DA	OP2-P-O3'	6.10	118.62	105.20
4	N	407	LEU	CA-CB-CG	6.00	129.10	115.30
13	I	-30	DG	P-O3'-C3'	5.96	126.85	119.70
14	J	-53	DA	P-O3'-C3'	5.95	126.84	119.70
14	J	-58	DC	P-O3'-C3'	5.93	126.82	119.70
13	I	-38	DC	OP2-P-O3'	5.91	118.19	105.20
2	L	480	LEU	CB-CG-CD1	5.90	121.03	111.00
14	J	43	DA	OP2-P-O3'	5.89	118.16	105.20
13	I	50	DA	OP2-P-O3'	5.83	118.04	105.20
14	J	-5	DG	OP1-P-O3'	5.83	118.02	105.20
4	N	153	LEU	CB-CG-CD1	-5.82	101.11	111.00
14	J	63	DG	OP2-P-O3'	5.82	118.00	105.20
2	L	421	ILE	CG1-CB-CG2	-5.80	98.65	111.40
14	J	24	DC	O4'-C1'-N1	-5.79	103.94	108.00
2	L	478	LEU	CA-CB-CG	5.79	128.62	115.30
3	M	412	LEU	CA-CB-CG	5.77	128.56	115.30
13	I	-48	DC	O4'-C1'-N1	5.77	112.04	108.00
2	L	394	LEU	CA-CB-CG	5.76	128.56	115.30
14	J	-65	DT	O5'-P-OP1	-5.72	100.55	105.70
14	J	-9	DC	OP2-P-O3'	5.70	117.74	105.20
14	J	-61	DT	O4'-C1'-N1	5.69	111.98	108.00
14	J	51	DG	OP1-P-OP2	-5.67	111.09	119.60
13	I	-25	DA	OP1-P-O3'	5.66	117.66	105.20
13	I	-30	DG	OP2-P-O3'	5.66	117.66	105.20
13	I	-21	DC	OP2-P-O3'	5.65	117.62	105.20
14	J	51	DG	O5'-P-OP1	-5.64	100.62	105.70
14	J	8	DG	O4'-C1'-N9	-5.64	104.05	108.00
13	I	36	DC	OP2-P-O3'	5.61	117.54	105.20
3	M	308	LEU	CA-CB-CG	5.60	128.19	115.30
2	L	696	LEU	CA-CB-CG	5.59	128.16	115.30
14	J	-38	DA	P-O3'-C3'	5.59	126.41	119.70

Continued on next page...

Continued from previous page...

Mol	Chain	Res	Type	Atoms	Z	Observed(°)	Ideal(°)
14	J	-51	DG	P-O3'-C3'	5.58	126.40	119.70
2	L	471	ASP	CB-CG-OD1	5.57	123.32	118.30
14	J	22	DT	O5'-P-OP2	5.57	117.39	110.70
9	E	71	VAL	CG1-CB-CG2	-5.57	101.99	110.90
14	J	22	DT	OP2-P-O3'	5.56	117.44	105.20
14	J	48	DG	OP2-P-O3'	5.56	117.43	105.20
2	L	245	ASP	CB-CG-OD1	5.55	123.29	118.30
1	K	176	LEU	CA-CB-CG	5.54	128.05	115.30
2	L	635	ASP	CB-CG-OD1	5.53	123.28	118.30
13	I	56	DC	O4'-C1'-N1	-5.51	104.14	108.00
14	J	-58	DC	OP2-P-O3'	5.50	117.31	105.20
13	I	67	DA	P-O3'-C3'	5.49	126.29	119.70
1	K	576	LEU	CA-CB-CG	5.47	127.89	115.30
14	J	1	DC	OP2-P-O3'	5.45	117.19	105.20
13	I	4	DC	P-O3'-C3'	5.43	126.22	119.70
14	J	-6	DG	O4'-C1'-N9	-5.43	104.20	108.00
2	L	688	PHE	CB-CG-CD1	5.42	124.59	120.80
12	H	67	PHE	CB-CG-CD1	5.42	124.59	120.80
14	J	42	DA	P-O3'-C3'	5.41	126.20	119.70
13	I	-29	DC	OP2-P-O3'	5.41	117.09	105.20
13	I	-64	DC	OP2-P-O3'	5.40	117.08	105.20
14	J	-57	DT	O4'-C1'-N1	-5.39	104.23	108.00
14	J	-36	DG	OP1-P-O3'	5.38	117.04	105.20
13	I	-53	DG	O4'-C4'-C3'	5.37	109.22	106.00
14	J	38	DG	OP2-P-O3'	5.37	117.02	105.20
13	I	24	DA	O5'-P-OP2	5.37	117.14	110.70
13	I	-40	DG	O4'-C1'-N9	5.35	111.75	108.00
8	D	108	VAL	CG1-CB-CG2	-5.34	102.35	110.90
14	J	20	DG	C4'-C3'-C2'	-5.34	98.29	103.10
13	I	-52	DG	OP1-P-OP2	-5.34	111.59	119.60
1	K	259	ASP	CB-CG-OD1	5.33	123.10	118.30
2	L	551	VAL	CG1-CB-CG2	-5.32	102.39	110.90
4	N	269	GLU	CA-CB-CG	5.30	125.07	113.40
14	J	29	DG	O4'-C1'-N9	5.30	111.71	108.00
13	I	36	DC	P-O3'-C3'	5.30	126.06	119.70
13	I	22	DC	O4'-C1'-N1	5.29	111.70	108.00
14	J	53	DC	OP2-P-O3'	5.28	116.83	105.20
14	J	52	DC	O5'-P-OP2	-5.26	100.96	105.70
13	I	3	DT	N3-C4-O4	5.25	123.05	119.90
3	M	249	LEU	CA-CB-CG	5.22	127.31	115.30
14	J	-17	DT	P-O3'-C3'	5.22	125.96	119.70
14	J	21	DG	O5'-P-OP2	5.22	116.96	110.70

Continued on next page...

Continued from previous page...

Mol	Chain	Res	Type	Atoms	Z	Observed(°)	Ideal(°)
8	D	67	PHE	CB-CG-CD2	-5.20	117.16	120.80
14	J	-34	DA	O4'-C1'-N9	5.20	111.64	108.00
13	I	-2	DC	C1'-O4'-C4'	-5.19	104.91	110.10
13	I	-64	DC	P-O3'-C3'	5.18	125.92	119.70
14	J	-46	DT	O4'-C1'-N1	-5.17	104.38	108.00
13	I	42	DC	OP2-P-O3'	5.17	116.57	105.20
14	J	-70	DC	OP2-P-O3'	5.17	116.57	105.20
14	J	-60	DA	P-O3'-C3'	5.14	125.87	119.70
13	I	10	DC	C1'-O4'-C4'	-5.14	104.96	110.10
14	J	-31	DA	OP2-P-O3'	5.14	116.51	105.20
13	I	-49	DG	C1'-O4'-C4'	-5.14	104.96	110.10
13	I	30	DT	OP2-P-O3'	5.13	116.49	105.20
14	J	-3	DA	O4'-C1'-N9	-5.13	104.41	108.00
2	L	457	LEU	CA-CB-CG	5.13	127.09	115.30
13	I	38	DT	OP2-P-O3'	5.12	116.46	105.20
14	J	72	DT	C1'-O4'-C4'	-5.12	104.98	110.10
14	J	20	DG	O3'-P-O5'	-5.11	94.30	104.00
14	J	49	DC	OP2-P-O3'	5.10	116.42	105.20
13	I	-33	DA	OP2-P-O3'	5.09	116.40	105.20
4	N	632	LEU	CA-CB-CG	5.07	126.96	115.30
14	J	-27	DC	C1'-O4'-C4'	-5.06	105.04	110.10
2	L	633	LEU	CA-CB-CG	5.06	126.93	115.30
14	J	65	DA	OP2-P-O3'	5.05	116.31	105.20
14	J	-46	DT	O4'-C1'-C2'	-5.04	101.87	105.90
4	N	227	LEU	CA-CB-CG	5.04	126.89	115.30
13	I	68	DT	O4'-C1'-C2'	-5.03	101.88	105.90
14	J	23	DG	P-O3'-C3'	5.03	125.74	119.70
14	J	37	DC	OP2-P-O3'	5.03	116.26	105.20
1	K	245	ASP	CB-CG-OD1	5.01	122.81	118.30
14	J	31	DT	O4'-C1'-N1	5.01	111.51	108.00
4	N	466	LEU	CA-CB-CG	5.00	126.81	115.30
14	J	49	DC	OP1-P-OP2	-5.00	112.10	119.60

There are no chirality outliers.

All (23) planarity outliers are listed below:

Mol	Chain	Res	Type	Group
6	B	50	ILE	Peptide
6	B	68	ASP	Peptide
7	C	74	LYS	Peptide
8	D	100	PRO	Peptide
10	F	45	ARG	Peptide

Continued on next page...

Continued from previous page...

Mol	Chain	Res	Type	Group
1	K	271	GLU	Peptide
1	K	408	ASP	Peptide
1	K	54	SER	Peptide
2	L	246	ILE	Peptide
2	L	445	PRO	Peptide
2	L	54	SER	Peptide
2	L	562	ASN	Peptide
2	L	588	ALA	Peptide
3	M	332	PHE	Peptide
3	M	442	TYR	Peptide
3	M	633	ILE	Peptide
4	N	306	ILE	Peptide
4	N	347	ASN	Peptide
4	N	372	VAL	Peptide
4	N	512	PHE	Peptide
4	N	514	LYS	Peptide
4	N	604	THR	Peptide
4	N	605	LYS	Peptide

5.2 Too-close contacts [i](#)

In the following table, the Non-H and H(model) columns list the number of non-hydrogen atoms and hydrogen atoms in the chain respectively. The H(added) column lists the number of hydrogen atoms added and optimized by MolProbity. The Clashes column lists the number of clashes within the asymmetric unit, whereas Symm-Clashes lists symmetry-related clashes.

Mol	Chain	Non-H	H(model)	H(added)	Clashes	Symm-Clashes
1	K	5178	0	5104	101	0
2	L	5245	0	5155	130	0
3	M	4376	0	4380	64	0
4	N	4416	0	4493	75	0
5	A	802	0	841	24	0
6	B	662	0	709	21	0
7	C	795	0	846	25	0
8	D	745	0	773	22	0
9	E	801	0	838	16	0
10	F	619	0	659	15	0
11	G	809	0	864	15	0
12	H	726	0	747	22	0
13	I	2952	0	1629	25	0
14	J	2987	0	1630	19	0
15	K	1	0	0	0	0

Continued on next page...

Continued from previous page...

Mol	Chain	Non-H	H(model)	H(added)	Clashes	Symm-Clashes
15	L	1	0	0	0	0
All	All	31115	0	28668	491	0

The all-atom clashscore is defined as the number of clashes found per 1000 atoms (including hydrogen atoms). The all-atom clashscore for this structure is 10.

All (491) close contacts within the same asymmetric unit are listed below, sorted by their clash magnitude.

Atom-1	Atom-2	Interatomic distance (Å)	Clash overlap (Å)
13:I:3:DT:H3	14:J:4:DG:H1	1.12	0.92
2:L:575:TYR:O	2:L:579:ASN:HB2	1.76	0.85
2:L:242:LEU:O	2:L:334:SER:HB3	1.76	0.84
2:L:156:LYS:O	2:L:160:LYS:HB2	1.81	0.81
3:M:28:SER:N	3:M:31:TYR:HH	1.80	0.80
2:L:600:SER:O	2:L:603:VAL:HB	1.88	0.74
4:N:140:LYS:HA	4:N:237:TRP:O	1.88	0.73
3:M:34:PRO:HA	3:M:239:VAL:O	1.90	0.71
5:A:72:ARG:O	5:A:76:GLN:HB2	1.91	0.71
2:L:684:ILE:O	2:L:688:PHE:HB2	1.91	0.70
2:L:128:SER:O	2:L:132:LEU:HB2	1.91	0.69
7:C:92:GLU:O	7:C:96:LEU:HB2	1.92	0.69
12:H:115:VAL:O	12:H:119:THR:HB	1.93	0.68
5:A:63:ARG:HH21	14:J:18:DG:H5'	1.59	0.68
1:K:268:HIS:O	1:K:300:THR:HA	1.93	0.68
1:K:575:TYR:O	1:K:579:ASN:HB2	1.93	0.67
4:N:76:ILE:O	4:N:80:ASN:HB2	1.94	0.67
1:K:309:ALA:O	1:K:313:TRP:HB3	1.98	0.64
2:L:638:LEU:O	2:L:642:TYR:HB3	1.98	0.64
2:L:678:ASP:HB2	2:L:682:ASN:HB2	1.80	0.63
7:C:91:GLU:O	7:C:95:LYS:HB2	1.98	0.63
3:M:143:MET:O	3:M:146:LEU:HB3	1.98	0.63
1:K:197:LEU:HA	1:K:372:VAL:O	1.99	0.63
1:K:682:ASN:O	1:K:686:GLU:HB3	1.99	0.62
1:K:435:HIS:O	1:K:516:ARG:NH2	2.34	0.60
1:K:592:PHE:HB2	1:K:618:VAL:HG23	1.83	0.60
12:H:63:VAL:O	12:H:67:PHE:HB2	2.01	0.60
7:C:59:THR:HG23	8:D:41:VAL:HG11	1.83	0.60
8:D:101:GLY:O	8:D:105:LYS:HB2	2.02	0.60
2:L:96:ILE:HG13	2:L:384:ALA:HB1	1.84	0.60
7:C:42:ARG:HG3	8:D:85:THR:HB	1.83	0.59
3:M:613:LEU:O	3:M:617:LEU:HB2	2.02	0.59

Continued on next page...

Continued from previous page...

Atom-1	Atom-2	Interatomic distance (Å)	Clash overlap (Å)
1:K:240:MET:O	1:K:331:VAL:HA	2.02	0.59
5:A:42:ARG:HG3	13:I:70:DG:H3'	1.85	0.58
2:L:608:HIS:HA	2:L:633:LEU:HB2	1.85	0.58
3:M:37:MET:HB2	3:M:42:LYS:HE3	1.85	0.58
5:A:54:TYR:HB3	6:B:40:ARG:HE	1.68	0.58
1:K:306:VAL:HB	1:K:310:GLU:HG2	1.84	0.58
4:N:351:ILE:HA	4:N:368:ASN:HD21	1.69	0.58
7:C:29:ARG:HH12	8:D:32:GLU:HB3	1.69	0.58
1:K:462:ARG:HE	1:K:489:THR:HA	1.68	0.58
1:K:188:VAL:HG11	1:K:330:LEU:HD13	1.86	0.57
1:K:570:GLN:HG3	1:K:601:GLY:HA2	1.85	0.57
4:N:299:HIS:O	4:N:303:ASP:HB2	2.04	0.57
2:L:238:ARG:HE	2:L:261:GLN:HA	1.69	0.57
4:N:447:ARG:HA	4:N:450:GLU:HB3	1.85	0.57
11:G:113:SER:HA	11:G:116:LEU:HD12	1.86	0.57
9:E:63:ARG:HH12	10:F:33:ALA:HB2	1.68	0.57
4:N:345:PRO:HD2	4:N:375:LEU:HD11	1.86	0.57
13:I:59:DT:H3	14:J:59:DA:H61	1.50	0.57
4:N:177:LYS:H	4:N:636:ILE:HD11	1.70	0.57
3:M:444:CYS:HB3	3:M:445:LEU:HD12	1.87	0.57
1:K:466:GLN:HE21	3:M:423:GLN:HG2	1.69	0.57
2:L:479:PRO:HG3	3:M:438:GLU:HA	1.87	0.57
1:K:228:ILE:HB	1:K:236:VAL:HG21	1.86	0.56
6:B:39:ARG:NH1	6:B:43:VAL:O	2.38	0.56
6:B:92:ARG:HH21	8:D:73:GLU:HG2	1.69	0.56
1:K:91:TYR:O	1:K:95:LYS:N	2.38	0.56
2:L:320:MET:HB3	2:L:324:ARG:HH12	1.70	0.56
4:N:118:VAL:HA	4:N:121:GLN:HB3	1.87	0.56
4:N:85:ALA:HB1	4:N:293:VAL:HG21	1.88	0.56
3:M:270:MET:O	3:M:274:ARG:HB2	2.05	0.56
1:K:246:ILE:HG12	1:K:269:ARG:HG3	1.87	0.56
1:K:327:LYS:HG2	2:L:405:PRO:HG2	1.88	0.56
7:C:78:ILE:HB	8:D:51:ILE:HG13	1.88	0.55
2:L:310:GLU:HG3	2:L:409:PRO:HB3	1.87	0.55
1:K:535:LEU:HD22	2:L:450:ILE:HG23	1.88	0.55
2:L:491:LEU:HB2	2:L:550:ASP:HB3	1.89	0.55
5:A:62:ILE:O	5:A:93:GLN:NE2	2.39	0.55
2:L:223:VAL:O	2:L:227:ASN:ND2	2.39	0.55
6:B:68:ASP:O	6:B:71:THR:HB	2.07	0.55
3:M:624:THR:O	3:M:628:LEU:HB2	2.07	0.55
1:K:513:TRP:O	1:K:528:SER:HA	2.07	0.55

Continued on next page...

Continued from previous page...

Atom-1	Atom-2	Interatomic distance (Å)	Clash overlap (Å)
2:L:429:ASN:HA	2:L:432:ARG:HE	1.71	0.55
2:L:425:SER:O	2:L:432:ARG:NH1	2.40	0.55
11:G:67:GLY:O	11:G:71:ARG:HB2	2.05	0.55
1:K:107:THR:HB	2:L:40:ARG:HH21	1.72	0.54
7:C:54:VAL:HG21	8:D:95:VAL:HG21	1.89	0.54
2:L:579:ASN:ND2	3:M:446:ASP:OD1	2.40	0.54
2:L:236:VAL:HG13	2:L:329:ASP:HB2	1.89	0.54
5:A:116:ARG:NH1	5:A:118:THR:O	2.40	0.54
3:M:156:HIS:NE2	13:I:-49:DG:OP1	2.41	0.54
6:B:73:THR:HG21	6:B:81:VAL:HG22	1.88	0.54
2:L:202:PRO:O	2:L:220:ASN:ND2	2.40	0.54
2:L:462:ARG:NH2	2:L:550:ASP:O	2.39	0.54
1:K:363:LYS:NZ	1:K:393:VAL:O	2.36	0.54
2:L:333:ILE:HB	2:L:372:VAL:HA	1.90	0.54
3:M:99:SER:OG	3:M:100:LEU:N	2.40	0.54
8:D:35:ALA:O	8:D:39:TYR:HB2	2.07	0.54
4:N:431:ASP:O	4:N:435:GLU:HB2	2.08	0.54
3:M:220:LEU:HG	3:M:233:ALA:HB3	1.90	0.53
11:G:27:VAL:O	11:G:31:HIS:HB2	2.07	0.53
1:K:323:GLY:HA3	1:K:365:LEU:HD21	1.91	0.53
1:K:432:ARG:HA	1:K:437:ASN:HB2	1.91	0.53
4:N:158:ILE:HG23	4:N:161:LYS:HD2	1.91	0.53
2:L:59:GLY:HA2	2:L:119:LEU:O	2.08	0.53
13:I:-64:DC:O2	14:J:64:DG:N2	2.42	0.53
13:I:3:DT:O4	14:J:-4:DG:O6	2.27	0.53
2:L:284:TYR:HA	2:L:298:ASN:HB2	1.91	0.53
2:L:620:ASN:HB3	2:L:648:ILE:HG12	1.91	0.53
4:N:131:ARG:NH2	4:N:137:GLU:O	2.42	0.53
8:D:60:ASN:O	8:D:64:ASN:ND2	2.41	0.53
1:K:541:GLY:HA3	1:K:548:ILE:HD11	1.91	0.53
2:L:186:LYS:NZ	2:L:227:ASN:OD1	2.41	0.53
2:L:462:ARG:HH21	2:L:490:VAL:HA	1.72	0.53
4:N:262:ILE:HA	4:N:289:ILE:O	2.09	0.53
11:G:92:GLU:HB3	12:H:103:LEU:HD22	1.90	0.53
2:L:678:ASP:OD2	2:L:680:LEU:N	2.42	0.53
3:M:250:PHE:O	3:M:254:LYS:NZ	2.42	0.53
4:N:102:ARG:O	4:N:626:LYS:NZ	2.42	0.53
13:I:16:DA:N6	14:J:-17:DT:O4	2.42	0.53
1:K:425:SER:O	1:K:432:ARG:NH1	2.42	0.53
4:N:166:LYS:HE3	4:N:178:HIS:HB2	1.91	0.52
2:L:260:ASP:H	2:L:291:LYS:HZ3	1.56	0.52

Continued on next page...

Continued from previous page...

Atom-1	Atom-2	Interatomic distance (Å)	Clash overlap (Å)
4:N:592:MET:O	4:N:596:GLU:HB2	2.09	0.52
3:M:611:ASN:HA	3:M:614:ASN:HB2	1.91	0.52
10:F:39:ARG:NH1	10:F:43:VAL:O	2.43	0.52
1:K:102:LEU:HD21	1:K:392:LYS:HE2	1.90	0.52
2:L:644:LYS:O	2:L:671:ARG:NH2	2.42	0.52
4:N:27:GLU:HB3	4:N:393:PRO:HB2	1.92	0.52
8:D:77:LEU:O	8:D:81:ASN:ND2	2.42	0.52
2:L:441:ASN:OD1	2:L:443:ASN:ND2	2.43	0.52
4:N:499:ILE:HG21	4:N:526:LEU:HD13	1.91	0.52
1:K:424:GLN:O	1:K:428:TRP:N	2.43	0.52
2:L:153:GLU:HA	2:L:156:LYS:HB2	1.92	0.52
1:K:255:SER:O	1:K:258:GLN:NE2	2.43	0.52
2:L:138:GLU:O	2:L:142:PHE:HB2	2.10	0.52
4:N:325:SER:OG	4:N:326:GLN:N	2.44	0.51
4:N:350:GLU:O	4:N:368:ASN:ND2	2.44	0.51
8:D:83:ARG:HH21	13:I:-34:DG:H3'	1.73	0.51
13:I:35:DC:O2	14:J:-35:DG:N2	2.43	0.51
2:L:441:ASN:ND2	2:L:444:GLU:OE2	2.43	0.51
3:M:231:ARG:NH2	3:M:233:ALA:O	2.44	0.51
5:A:106:ASP:OD2	5:A:131:ARG:NH2	2.43	0.51
1:K:342:GLY:O	1:K:379:ASN:ND2	2.44	0.51
2:L:80:ILE:HD13	4:N:469:LYS:HD3	1.93	0.51
1:K:412:GLU:O	1:K:416:MET:HB2	2.11	0.51
1:K:530:ILE:HB	2:L:455:PHE:HB2	1.93	0.51
3:M:215:ASP:OD1	3:M:215:ASP:N	2.40	0.51
4:N:454:GLN:NE2	4:N:571:TYR:OH	2.43	0.51
3:M:173:ASP:N	3:M:173:ASP:OD1	2.44	0.51
3:M:555:LYS:HA	3:M:558:VAL:HG12	1.92	0.51
4:N:151:LEU:HD12	4:N:154:LEU:HD12	1.93	0.51
1:K:237:ARG:O	1:K:261:GLN:NE2	2.43	0.51
2:L:683:ILE:O	2:L:687:ARG:HB2	2.11	0.51
4:N:211:TYR:N	4:N:220:ASP:OD1	2.44	0.51
2:L:131:ILE:HG13	2:L:223:VAL:HG11	1.92	0.51
2:L:480:LEU:HB2	2:L:483:MET:HB3	1.93	0.51
4:N:294:GLN:HB2	4:N:347:ASN:HD22	1.76	0.51
2:L:342:GLY:O	2:L:379:ASN:ND2	2.44	0.50
2:L:458:GLN:NE2	2:L:552:ASN:OD1	2.44	0.50
8:D:32:GLU:HA	14:J:49:DC:H5''	1.92	0.50
10:F:47:SER:OG	10:F:48:GLY:N	2.42	0.50
2:L:506:VAL:HA	2:L:551:VAL:HG23	1.93	0.50
7:C:39:TYR:HD1	8:D:75:SER:HB2	1.77	0.50

Continued on next page...

Continued from previous page...

Atom-1	Atom-2	Interatomic distance (Å)	Clash overlap (Å)
1:K:309:ALA:HA	1:K:312:MET:HB2	1.92	0.50
2:L:171:TYR:O	2:L:175:ARG:NE	2.43	0.50
2:L:603:VAL:HG21	2:L:628:LYS:HB2	1.94	0.50
3:M:140:GLY:O	3:M:143:MET:HB2	2.11	0.50
3:M:563:GLU:O	3:M:567:GLU:HB2	2.12	0.50
9:E:41:TYR:HB2	13:I:9:DG:H5''	1.94	0.50
12:H:43:LYS:HD2	12:H:47:PRO:HA	1.92	0.50
1:K:633:LEU:HD22	12:H:119:THR:HG22	1.94	0.50
2:L:490:VAL:HG23	2:L:551:VAL:HA	1.93	0.50
4:N:31:SER:OG	4:N:424:ARG:NH1	2.44	0.50
12:H:60:ASN:O	12:H:64:ASN:ND2	2.45	0.50
1:K:169:ASP:OD2	3:M:58:ARG:NH1	2.45	0.50
1:K:333:ILE:HB	1:K:372:VAL:HA	1.94	0.50
2:L:333:ILE:HD11	2:L:370:LEU:HB3	1.94	0.50
2:L:576:LEU:HA	2:L:580:TYR:HD2	1.76	0.50
2:L:222:ALA:HB2	2:L:252:THR:HG23	1.94	0.50
2:L:630:LEU:HG	2:L:632:PRO:HD3	1.93	0.50
4:N:78:ASP:OD2	4:N:82:ARG:NH1	2.45	0.50
1:K:267:LEU:HA	1:K:299:ILE:O	2.12	0.49
1:K:540:TRP:HE1	1:K:692:THR:HG1	1.60	0.49
1:K:678:ASP:OD2	2:L:433:ARG:NH1	2.44	0.49
4:N:67:THR:OG1	4:N:68:LEU:N	2.45	0.49
4:N:294:GLN:NE2	4:N:348:ASN:OD1	2.45	0.49
5:A:57:SER:OG	6:B:40:ARG:NH2	2.45	0.49
1:K:513:TRP:HA	2:L:522:THR:HA	1.94	0.49
2:L:462:ARG:O	2:L:466:GLN:HB2	2.11	0.49
4:N:30:ILE:HD13	4:N:342:ARG:HH11	1.77	0.49
2:L:304:GLY:O	2:L:410:LYS:NZ	2.45	0.49
11:G:21:ALA:HB2	12:H:118:TYR:HB2	1.93	0.49
3:M:444:CYS:SG	3:M:592:SER:OG	2.68	0.49
4:N:29:LEU:HD13	4:N:80:ASN:HB3	1.94	0.49
12:H:77:LEU:O	12:H:81:ASN:ND2	2.40	0.49
2:L:84:PRO:O	2:L:89:ARG:NH1	2.46	0.49
1:K:195:ASN:ND2	1:K:394:LEU:O	2.41	0.49
4:N:129:ARG:NH2	4:N:236:ASP:OD1	2.44	0.49
6:B:69:ALA:O	6:B:72:TYR:HB2	2.13	0.49
7:C:81:ARG:NH2	7:C:107:VAL:O	2.44	0.49
2:L:205:HIS:HB2	2:L:249:GLY:HA2	1.94	0.48
2:L:124:ARG:HG2	4:N:583:GLN:HE22	1.78	0.48
9:E:84:PHE:N	14:J:-23:DT:OP1	2.44	0.48
1:K:88:ARG:NH1	1:K:91:TYR:OH	2.47	0.48

Continued on next page...

Continued from previous page...

Atom-1	Atom-2	Interatomic distance (Å)	Clash overlap (Å)
4:N:254:ALA:HA	4:N:278:LEU:HD13	1.94	0.48
4:N:630:LYS:HG2	4:N:633:LYS:HB2	1.94	0.48
5:A:120:MET:SD	5:A:122:LYS:NZ	2.80	0.48
1:K:497:SER:OG	3:M:409:ASN:ND2	2.47	0.48
1:K:85:GLU:OE2	1:K:89:ARG:NH1	2.46	0.48
11:G:65:LEU:HD23	11:G:68:ASN:HD22	1.77	0.48
12:H:116:THR:O	12:H:120:SER:CB	2.61	0.48
1:K:119:LEU:HD12	1:K:193:VAL:HG12	1.96	0.48
1:K:505:VAL:HA	1:K:593:ILE:O	2.13	0.48
4:N:457:LEU:HB3	4:N:461:LYS:HE3	1.94	0.48
6:B:64:ASN:O	6:B:93:GLN:NE2	2.46	0.48
9:E:69:ARG:O	9:E:73:GLU:HB2	2.13	0.48
12:H:94:ALA:HA	12:H:97:LEU:HD12	1.95	0.48
1:K:493:THR:OG1	1:K:548:ILE:N	2.46	0.48
6:B:35:ARG:NH2	6:B:51:TYR:OH	2.46	0.48
2:L:464:GLN:O	2:L:468:TYR:HB2	2.14	0.48
4:N:292:LEU:HD11	4:N:299:HIS:HA	1.96	0.48
13:I:50:DA:N6	14:J:-51:DG:O6	2.47	0.48
2:L:96:ILE:O	2:L:100:ASN:ND2	2.46	0.47
4:N:167:ARG:HA	4:N:240:LEU:HB2	1.96	0.47
2:L:337:PHE:HD2	2:L:383:ILE:HG13	1.79	0.47
4:N:567:LEU:O	4:N:571:TYR:HB2	2.13	0.47
5:A:73:GLU:OE1	6:B:25:ASN:ND2	2.46	0.47
5:A:134:ARG:HB2	7:C:95:LYS:HG3	1.94	0.47
6:B:58:LEU:O	6:B:61:PHE:HB3	2.13	0.47
7:C:112:GLN:H	7:C:115:LEU:HD12	1.79	0.47
2:L:283:GLN:O	2:L:298:ASN:ND2	2.48	0.47
4:N:88:PRO:HD2	4:N:113:SER:HB2	1.97	0.47
1:K:414:ILE:HG22	2:L:518:VAL:HG13	1.95	0.47
4:N:422:MET:HG3	4:N:606:PHE:HB2	1.95	0.47
12:H:75:SER:O	12:H:79:HIS:ND1	2.42	0.47
4:N:221:TYR:HA	4:N:224:LYS:HE2	1.96	0.47
7:C:85:LEU:O	7:C:89:ASN:ND2	2.48	0.47
11:G:81:ARG:NH2	11:G:107:VAL:O	2.44	0.47
12:H:85:THR:OG1	12:H:86:ILE:N	2.48	0.47
2:L:330:LEU:HD12	2:L:369:ASN:HB3	1.95	0.47
2:L:477:THR:HA	2:L:491:LEU:HA	1.97	0.47
4:N:428:ARG:NH1	4:N:431:ASP:OD2	2.48	0.47
9:E:116:ARG:NH1	9:E:118:THR:O	2.48	0.47
2:L:341:ASP:O	2:L:385:ARG:NH2	2.42	0.47
3:M:296:VAL:HG22	3:M:299:LEU:HD12	1.97	0.47

Continued on next page...

Continued from previous page...

Atom-1	Atom-2	Interatomic distance (Å)	Clash overlap (Å)
4:N:99:GLN:OE1	4:N:102:ARG:NH2	2.48	0.47
12:H:116:THR:O	12:H:120:SER:HB3	2.15	0.47
2:L:272:MET:O	2:L:274:LYS:NZ	2.44	0.47
2:L:240:MET:O	2:L:331:VAL:HA	2.15	0.47
2:L:470:SER:HA	2:L:475:PHE:H	1.79	0.47
2:L:516:ARG:HG2	2:L:518:VAL:HB	1.97	0.47
4:N:80:ASN:ND2	4:N:417:TYR:OH	2.48	0.47
1:K:69:HIS:HE1	1:K:166:PHE:HA	1.79	0.46
2:L:352:PRO:HB3	2:L:386:SER:HA	1.97	0.46
3:M:437:GLN:O	3:M:441:ASP:HB3	2.14	0.46
3:M:547:LYS:HA	3:M:547:LYS:HD3	1.78	0.46
2:L:66:MET:O	2:L:201:ARG:NH1	2.48	0.46
2:L:444:GLU:HB3	2:L:452:SER:HA	1.97	0.46
1:K:616:LYS:O	1:K:645:ASN:ND2	2.48	0.46
2:L:464:GLN:O	2:L:468:TYR:CB	2.63	0.46
1:K:462:ARG:NH2	1:K:489:THR:O	2.41	0.46
3:M:498:LEU:HD22	3:M:536:GLU:HG2	1.96	0.46
13:I:19:DC:H42	14:J:-19:DG:H1	1.62	0.46
2:L:504:ILE:O	2:L:593:ILE:N	2.42	0.46
4:N:105:PRO:HA	4:N:625:LEU:HD22	1.97	0.46
1:K:72:ILE:HD11	1:K:167:ASN:HA	1.97	0.46
1:K:91:TYR:HA	1:K:94:TYR:HB3	1.98	0.46
1:K:281:GLN:O	1:K:298:ASN:ND2	2.49	0.46
1:K:412:GLU:O	1:K:416:MET:CB	2.64	0.46
2:L:570:GLN:HA	2:L:573:LEU:HD12	1.98	0.46
9:E:62:ILE:HD11	10:F:37:LEU:HD11	1.98	0.46
1:K:315:PHE:O	1:K:319:VAL:HB	2.16	0.46
4:N:98:ARG:HG2	4:N:173:LEU:HD22	1.98	0.46
9:E:79:LYS:HB3	9:E:82:LEU:HD11	1.98	0.46
1:K:466:GLN:O	1:K:470:SER:CB	2.63	0.46
1:K:600:SER:HA	1:K:603:VAL:HB	1.98	0.46
2:L:541:GLY:HA2	2:L:544:ARG:HG2	1.98	0.46
2:L:597:ASP:OD1	2:L:597:ASP:N	2.49	0.46
2:L:604:HIS:O	2:L:608:HIS:ND1	2.47	0.46
5:A:69:ARG:NH2	14:J:17:DA:OP1	2.49	0.46
2:L:206:HIS:HE1	2:L:277:PRO:HD3	1.81	0.46
3:M:270:MET:O	3:M:274:ARG:CB	2.64	0.46
9:E:95:ALA:O	9:E:99:TYR:HB3	2.16	0.46
10:F:87:VAL:HA	10:F:90:LEU:HD12	1.98	0.46
2:L:253:GLN:HE22	2:L:281:GLN:HE21	1.64	0.45
3:M:581:GLU:OE1	3:M:585:LYS:NZ	2.49	0.45

Continued on next page...

Continued from previous page...

Atom-1	Atom-2	Interatomic distance (Å)	Clash overlap (Å)
7:C:73:ASN:HB2	7:C:82:HIS:HE2	1.81	0.45
10:F:87:VAL:HG11	10:F:102:GLY:HA2	1.97	0.45
1:K:516:ARG:NH1	1:K:521:GLY:O	2.50	0.45
4:N:164:ARG:HG3	4:N:235:ASP:HB2	1.98	0.45
7:C:88:ARG:NH1	7:C:94:ASN:OD1	2.42	0.45
1:K:666:ARG:HD2	1:K:668:LYS:HG2	1.98	0.45
2:L:69:HIS:O	2:L:201:ARG:NH2	2.40	0.45
11:G:17:ARG:HH21	11:G:28:GLY:HA2	1.81	0.45
14:J:18:DG:H1'	14:J:19:DC:H5'	1.98	0.45
1:K:205:HIS:HA	1:K:252:THR:HG23	1.98	0.45
1:K:626:GLN:HG3	1:K:655:GLN:HE22	1.81	0.45
1:K:540:TRP:NE1	1:K:692:THR:OG1	2.47	0.45
3:M:436:LYS:HG3	3:M:603:LEU:HD13	1.97	0.45
3:M:467:TYR:OH	3:M:572:ASN:ND2	2.50	0.45
3:M:610:GLU:O	3:M:614:ASN:ND2	2.44	0.45
4:N:84:ILE:HG23	4:N:88:PRO:HB3	1.98	0.45
5:A:48:LEU:HD23	5:A:51:ILE:HD12	1.97	0.45
2:L:97:LEU:HB3	2:L:102:LEU:HD12	1.98	0.45
2:L:103:ILE:HG22	2:L:105:ASP:H	1.81	0.45
2:L:279:THR:OG1	2:L:280:ILE:N	2.50	0.45
4:N:491:GLU:O	4:N:495:LEU:HB2	2.17	0.45
2:L:128:SER:HA	2:L:131:ILE:HG22	1.98	0.45
1:K:682:ASN:O	1:K:686:GLU:CB	2.64	0.45
2:L:425:SER:HB2	2:L:432:ARG:HB3	1.98	0.45
2:L:506:VAL:HB	2:L:594:GLY:HA2	1.98	0.45
3:M:263:LEU:HA	3:M:266:VAL:HG12	1.98	0.45
4:N:292:LEU:HD13	4:N:302:LEU:HD22	1.99	0.45
2:L:444:GLU:HG2	2:L:453:LYS:HG2	1.97	0.45
1:K:258:GLN:HA	1:K:289:GLU:HB3	1.98	0.45
1:K:425:SER:OG	1:K:437:ASN:ND2	2.41	0.45
2:L:607:GLY:O	2:L:633:LEU:N	2.50	0.45
3:M:449:GLN:NE2	3:M:589:SER:OG	2.50	0.45
8:D:115:VAL:O	8:D:119:THR:OG1	2.33	0.45
1:K:267:LEU:HD23	1:K:301:TRP:HZ2	1.83	0.44
1:K:476:VAL:HG21	3:M:416:ILE:HG12	1.99	0.44
1:K:511:ASP:HB2	1:K:531:ILE:HB	1.98	0.44
3:M:467:TYR:HA	3:M:470:VAL:HG12	1.98	0.44
3:M:610:GLU:OE2	3:M:614:ASN:ND2	2.49	0.44
4:N:100:LEU:HA	4:N:103:MET:HB2	1.99	0.44
4:N:431:ASP:O	4:N:435:GLU:CB	2.64	0.44
2:L:601:GLY:O	2:L:604:HIS:HB3	2.17	0.44

Continued on next page...

Continued from previous page...

Atom-1	Atom-2	Interatomic distance (Å)	Clash overlap (Å)
3:M:182:SER:H	3:M:186:ILE:HG23	1.81	0.44
3:M:571:LEU:HD12	3:M:574:LYS:HD3	1.98	0.44
1:K:431:PHE:O	1:K:437:ASN:ND2	2.51	0.44
1:K:514:ALA:HA	1:K:528:SER:HA	1.99	0.44
3:M:484:LEU:HD11	3:M:551:GLU:HA	1.99	0.44
1:K:608:HIS:HD2	12:H:120:SER:HB2	1.82	0.44
2:L:197:LEU:HA	2:L:372:VAL:HB	2.00	0.44
2:L:254:LYS:HA	2:L:257:TYR:HB2	1.99	0.44
6:B:29:ILE:O	6:B:55:ARG:NE	2.48	0.44
9:E:40:ARG:NH2	13:I:8:DC:O2	2.51	0.44
11:G:54:VAL:HG21	12:H:95:VAL:HG21	1.99	0.44
2:L:465:GLN:HA	2:L:468:TYR:HB3	2.00	0.44
2:L:499:SER:OG	2:L:499:SER:O	2.35	0.44
6:B:75:HIS:O	8:D:89:ARG:NH2	2.49	0.44
7:C:90:ASP:HB3	7:C:93:LEU:HB2	1.98	0.44
9:E:40:ARG:NH2	13:I:9:DG:N3	2.65	0.44
9:E:59:GLU:O	10:F:40:ARG:NH1	2.42	0.44
10:F:35:ARG:NH2	13:I:8:DC:OP2	2.50	0.44
1:K:102:LEU:HD11	1:K:392:LYS:HG2	2.00	0.44
1:K:271:GLU:HB2	1:K:275:TYR:HB3	2.00	0.44
8:D:102:GLU:O	8:D:106:HIS:ND1	2.50	0.44
13:I:5:DC:H6	13:I:5:DC:H2'	1.68	0.44
14:J:39:DA:H1'	14:J:40:DC:H5'	2.00	0.44
13:I:-68:DG:H2''	13:I:-67:DA:H5''	1.99	0.44
1:K:189:VAL:HG11	1:K:236:VAL:HG22	2.00	0.44
1:K:586:SER:O	1:K:586:SER:OG	2.33	0.44
2:L:114:LEU:HD11	2:L:118:MET:H	1.83	0.44
4:N:626:LYS:HD3	4:N:626:LYS:HA	1.85	0.44
3:M:558:VAL:HA	3:M:561:ILE:HG12	1.99	0.43
4:N:283:ASN:OD1	4:N:283:ASN:N	2.50	0.43
5:A:71:VAL:HA	5:A:74:ILE:HD12	1.99	0.43
9:E:92:LEU:HD21	10:F:65:VAL:HG11	2.01	0.43
10:F:75:HIS:NE2	12:H:90:GLU:OE2	2.50	0.43
2:L:617:THR:HA	2:L:645:ASN:HB3	2.00	0.43
3:M:159:ARG:HE	3:M:159:ARG:HB3	1.61	0.43
4:N:16:VAL:HB	4:N:293:VAL:HA	2.00	0.43
7:C:29:ARG:NH1	8:D:32:GLU:OE1	2.52	0.43
14:J:-27:DC:H4'	14:J:-26:DC:H5'	2.01	0.43
2:L:441:ASN:HD21	2:L:443:ASN:HB2	1.84	0.43
4:N:492:SER:HB3	4:N:536:LEU:HD21	2.00	0.43
5:A:46:VAL:HG13	5:A:49:ARG:HD3	2.01	0.43

Continued on next page...

Continued from previous page...

Atom-1	Atom-2	Interatomic distance (Å)	Clash overlap (Å)
1:K:75:SER:OG	1:K:76:TYR:N	2.52	0.43
1:K:466:GLN:OE1	1:K:488:ASN:ND2	2.52	0.43
3:M:42:LYS:HE2	3:M:278:GLY:HA3	2.01	0.43
5:A:55:GLN:NE2	6:B:40:ARG:O	2.44	0.43
5:A:118:THR:HA	6:B:45:ARG:HB3	1.99	0.43
6:B:55:ARG:O	6:B:58:LEU:HB3	2.17	0.43
8:D:96:ARG:HE	8:D:108:VAL:HG21	1.83	0.43
13:I:-6:DT:H2"	13:I:-5:DA:C8	2.54	0.43
1:K:134:VAL:HG12	1:K:209:PRO:HG3	2.00	0.43
3:M:421:LEU:O	3:M:425:MET:HB2	2.19	0.43
4:N:221:TYR:O	4:N:225:ARG:N	2.40	0.43
4:N:620:ASN:HA	4:N:621:ASP:HA	1.80	0.43
1:K:239:ILE:O	1:K:262:VAL:HA	2.18	0.43
1:K:526:SER:HA	2:L:458:GLN:HB2	2.00	0.43
3:M:421:LEU:O	3:M:425:MET:CB	2.67	0.43
4:N:141:CYS:HA	4:N:260:MET:O	2.18	0.43
3:M:28:SER:N	3:M:31:TYR:OH	2.46	0.43
7:C:34:LEU:HA	7:C:39:TYR:HE2	1.83	0.43
12:H:100:PRO:HD2	12:H:103:LEU:HD23	2.01	0.43
2:L:462:ARG:O	2:L:466:GLN:CB	2.66	0.42
2:L:566:MET:O	2:L:569:SER:OG	2.36	0.42
6:B:92:ARG:HH21	8:D:76:ARG:HH12	1.67	0.42
7:C:82:HIS:HA	7:C:85:LEU:HD12	2.01	0.42
13:I:-61:DG:N1	14:J:61:DC:O2	2.52	0.42
1:K:536:ASP:OD1	1:K:536:ASP:N	2.52	0.42
2:L:35:THR:OG1	3:M:61:GLU:OE2	2.37	0.42
8:D:99:LEU:HB2	8:D:104:ALA:HB2	2.01	0.42
1:K:513:TRP:HB3	1:K:529:VAL:HG22	2.01	0.42
2:L:32:LEU:HA	3:M:62:THR:HG23	2.01	0.42
10:F:92:ARG:HG3	10:F:93:GLN:HG2	2.00	0.42
1:K:296:ASN:O	1:K:424:GLN:NE2	2.43	0.42
4:N:465:GLY:O	4:N:469:LYS:HB2	2.19	0.42
7:C:115:LEU:O	10:F:44:LYS:NZ	2.44	0.42
2:L:617:THR:HG21	2:L:695:ILE:HG12	2.01	0.42
3:M:136:VAL:HG12	3:M:181:PHE:HB2	2.02	0.42
11:G:42:ARG:HG2	13:I:39:DA:H5"	2.00	0.42
14:J:-6:DG:H2"	14:J:-5:DG:C8	2.55	0.42
3:M:34:PRO:HB3	3:M:241:ILE:HB	2.00	0.42
3:M:75:LYS:O	3:M:79:LEU:HB2	2.20	0.42
4:N:264:PHE:HD2	4:N:291:LEU:HD12	1.84	0.42
12:H:101:GLY:O	12:H:105:LYS:HB2	2.18	0.42

Continued on next page...

Continued from previous page...

Atom-1	Atom-2	Interatomic distance (Å)	Clash overlap (Å)
1:K:309:ALA:HB3	1:K:407:SER:HB3	2.02	0.42
1:K:605:LEU:HD12	1:K:605:LEU:HA	1.87	0.42
2:L:239:ILE:HG12	2:L:330:LEU:HB3	2.01	0.42
2:L:241:ILE:HB	2:L:264:TYR:HD1	1.84	0.42
4:N:163:PHE:HD1	4:N:236:ASP:HB2	1.85	0.42
5:A:101:VAL:HG11	6:B:40:ARG:HG2	2.02	0.42
1:K:436:ALA:HB1	1:K:521:GLY:H	1.84	0.42
2:L:480:LEU:H	2:L:480:LEU:HG	1.41	0.42
4:N:110:ILE:HG22	4:N:116:PHE:HB3	2.01	0.42
5:A:49:ARG:NH2	14:J:-66:DG:O4'	2.51	0.42
5:A:119:ILE:O	6:B:47:SER:OG	2.30	0.42
7:C:20:ARG:NH2	13:I:-42:DT:OP1	2.48	0.42
1:K:177:PRO:HG2	1:K:202:PRO:HD2	2.01	0.42
1:K:409:PRO:O	2:L:433:ARG:NH2	2.53	0.42
3:M:462:LYS:HA	3:M:465:LYS:HG2	2.01	0.42
4:N:140:LYS:HB2	4:N:259:ASP:H	1.84	0.42
4:N:401:SER:OG	4:N:435:GLU:OE1	2.38	0.42
1:K:85:GLU:OE1	1:K:165:TYR:OH	2.33	0.42
1:K:109:SER:OG	2:L:40:ARG:NH2	2.53	0.42
4:N:86:ASN:OD1	4:N:115:LYS:NZ	2.47	0.42
4:N:481:SER:O	4:N:485:LEU:HB2	2.20	0.42
6:B:57:VAL:O	6:B:61:PHE:N	2.53	0.42
1:K:86:ASP:HA	1:K:87:PRO:HD3	1.93	0.41
1:K:476:VAL:O	1:K:492:CYS:N	2.44	0.41
2:L:377:GLY:HA3	2:L:383:ILE:HD12	2.02	0.41
3:M:256:ASP:OD1	3:M:256:ASP:N	2.53	0.41
3:M:419:HIS:HA	3:M:422:ILE:HG22	2.02	0.41
10:F:38:ALA:HB1	10:F:43:VAL:HB	2.01	0.41
12:H:31:LYS:H	13:I:49:DC:H5''	1.85	0.41
1:K:246:ILE:HA	1:K:268:HIS:HA	2.01	0.41
2:L:60:LEU:HG	2:L:197:LEU:HD21	2.02	0.41
3:M:181:PHE:HB3	3:M:186:ILE:HD13	2.02	0.41
3:M:214:LYS:HA	3:M:217:GLN:HB3	2.03	0.41
5:A:42:ARG:H	13:I:70:DG:H5''	1.84	0.41
3:M:235:ILE:HG13	3:M:237:ARG:HH11	1.85	0.41
3:M:588:LYS:O	3:M:592:SER:HB3	2.19	0.41
9:E:59:GLU:H	10:F:40:ARG:HH22	1.68	0.41
11:G:27:VAL:O	11:G:31:HIS:CB	2.68	0.41
1:K:55:PRO:HD2	1:K:56:LEU:HG	2.01	0.41
2:L:246:ILE:HG12	2:L:269:ARG:HG3	2.02	0.41
2:L:506:VAL:HG21	2:L:602:ILE:HD11	2.03	0.41

Continued on next page...

Continued from previous page...

Atom-1	Atom-2	Interatomic distance (Å)	Clash overlap (Å)
1:K:206:HIS:ND1	1:K:250:ASN:OD1	2.52	0.41
1:K:246:ILE:HB	1:K:339:ALA:HB2	2.02	0.41
2:L:179:GLY:HA2	2:L:182:ILE:HD12	2.03	0.41
2:L:181:ALA:HB1	2:L:224:ALA:HB2	2.02	0.41
2:L:682:ASN:O	2:L:686:GLU:HB2	2.20	0.41
4:N:249:ASP:HB3	4:N:252:LEU:HD13	2.02	0.41
7:C:92:GLU:O	7:C:96:LEU:CB	2.65	0.41
11:G:69:ALA:O	11:G:73:ASN:ND2	2.52	0.41
12:H:55:ALA:HA	12:H:58:ILE:HD12	2.01	0.41
2:L:243:ASP:HB3	2:L:266:SER:HA	2.03	0.41
2:L:293:GLU:OE1	2:L:427:TYR:OH	2.38	0.41
2:L:431:PHE:O	2:L:437:ASN:ND2	2.47	0.41
11:G:34:LEU:HB3	11:G:43:VAL:HG21	2.02	0.41
4:N:446:LYS:HE2	4:N:577:LYS:HZ1	1.85	0.41
6:B:98:TYR:HD2	12:H:58:ILE:HG23	1.85	0.41
1:K:74:THR:OG1	1:K:78:GLU:OE2	2.35	0.41
1:K:695:ILE:O	1:K:699:PHE:N	2.46	0.41
2:L:194:LYS:HE3	2:L:194:LYS:HB2	1.91	0.41
3:M:184:GLU:OE2	3:M:208:THR:OG1	2.38	0.41
4:N:405:LEU:HA	4:N:406:PRO:HD3	1.94	0.41
4:N:478:ILE:HA	4:N:481:SER:HB3	2.03	0.41
4:N:550:LEU:O	4:N:554:GLN:HB2	2.20	0.41
9:E:55:GLN:NE2	10:F:40:ARG:O	2.39	0.41
1:K:508:ASP:OD1	1:K:508:ASP:N	2.54	0.41
3:M:123:ILE:HD13	3:M:123:ILE:HA	1.98	0.41
3:M:447:ASP:HA	3:M:450:ASN:HB3	2.02	0.41
4:N:121:GLN:O	4:N:125:SER:OG	2.28	0.41
5:A:113:HIS:HE1	9:E:122:LYS:HG3	1.86	0.41
7:C:75:LYS:HB2	7:C:82:HIS:HE1	1.85	0.41
2:L:134:VAL:HG22	2:L:209:PRO:HG3	2.03	0.40
3:M:245:ASP:OD1	3:M:245:ASP:N	2.53	0.40
5:A:120:MET:N	5:A:123:ASP:OD2	2.45	0.40
7:C:63:LEU:HD22	8:D:42:LEU:HD13	2.01	0.40
7:C:77:ARG:HD2	13:I:-54:DA:H4'	2.04	0.40
9:E:100:LEU:HD23	9:E:100:LEU:HA	1.94	0.40
2:L:374:LEU:HD11	2:L:383:ILE:HD11	2.04	0.40
11:G:79:ILE:HA	11:G:80:PRO:HD3	1.88	0.40
11:G:93:LEU:HD22	11:G:97:LEU:HG	2.04	0.40
2:L:102:LEU:HB2	2:L:103:ILE:HD12	2.03	0.40
5:A:42:ARG:HA	5:A:43:PRO:HD3	1.94	0.40
2:L:162:ASP:OD1	2:L:162:ASP:N	2.48	0.40

Continued on next page...

Continued from previous page...

Atom-1	Atom-2	Interatomic distance (Å)	Clash overlap (Å)
2:L:271:GLU:HB2	2:L:275:TYR:H	1.86	0.40
2:L:577:TRP:HB2	2:L:605:LEU:HD21	2.03	0.40
2:L:652:ASN:ND2	2:L:676:ASP:O	2.52	0.40
7:C:42:ARG:N	8:D:84:SER:O	2.47	0.40
1:K:558:PHE:H	2:L:526:SER:HB2	1.86	0.40
4:N:495:LEU:HA	4:N:498:LYS:HD2	2.03	0.40
12:H:99:LEU:HB2	12:H:104:ALA:HB2	2.03	0.40
13:I:2:DG:O6	14:J:-3:DA:N6	2.54	0.40

There are no symmetry-related clashes.

5.3 Torsion angles [i](#)

5.3.1 Protein backbone [i](#)

In the following table, the Percentiles column shows the percent Ramachandran outliers of the chain as a percentile score with respect to all PDB entries followed by that with respect to all EM entries.

The Analysed column shows the number of residues for which the backbone conformation was analysed, and the total number of residues.

Mol	Chain	Analysed	Favoured	Allowed	Outliers	Percentiles	
1	K	645/661 (98%)	585 (91%)	60 (9%)	0	100	100
2	L	655/672 (98%)	590 (90%)	65 (10%)	0	100	100
3	M	526/543 (97%)	499 (95%)	27 (5%)	0	100	100
4	N	527/629 (84%)	485 (92%)	41 (8%)	1 (0%)	47	81
5	A	95/97 (98%)	92 (97%)	3 (3%)	0	100	100
6	B	81/83 (98%)	75 (93%)	6 (7%)	0	100	100
7	C	101/103 (98%)	96 (95%)	5 (5%)	0	100	100
8	D	93/95 (98%)	87 (94%)	6 (6%)	0	100	100
9	E	95/97 (98%)	92 (97%)	3 (3%)	0	100	100
10	F	76/78 (97%)	73 (96%)	3 (4%)	0	100	100
11	G	103/105 (98%)	98 (95%)	5 (5%)	0	100	100
12	H	91/93 (98%)	84 (92%)	7 (8%)	0	100	100
All	All	3088/3256 (95%)	2856 (92%)	231 (8%)	1 (0%)	100	100

All (1) Ramachandran outliers are listed below:

Mol	Chain	Res	Type
4	N	87	HIS

5.3.2 Protein sidechains [i](#)

In the following table, the Percentiles column shows the percent sidechain outliers of the chain as a percentile score with respect to all PDB entries followed by that with respect to all EM entries.

The Analysed column shows the number of residues for which the sidechain conformation was analysed, and the total number of residues.

Mol	Chain	Analysed	Rotameric	Outliers	Percentiles	
1	K	575/585 (98%)	575 (100%)	0	100	100
2	L	586/596 (98%)	585 (100%)	1 (0%)	93	96
3	M	504/511 (99%)	502 (100%)	2 (0%)	91	94
4	N	504/582 (87%)	504 (100%)	0	100	100
5	A	85/85 (100%)	82 (96%)	3 (4%)	36	60
6	B	68/68 (100%)	66 (97%)	2 (3%)	42	64
7	C	82/82 (100%)	80 (98%)	2 (2%)	49	69
8	D	81/81 (100%)	76 (94%)	5 (6%)	18	45
9	E	84/84 (100%)	82 (98%)	2 (2%)	49	69
10	F	63/63 (100%)	62 (98%)	1 (2%)	62	79
11	G	83/83 (100%)	81 (98%)	2 (2%)	49	69
12	H	79/79 (100%)	77 (98%)	2 (2%)	47	68
All	All	2794/2899 (96%)	2772 (99%)	22 (1%)	82	89

All (22) residues with a non-rotameric sidechain are listed below:

Mol	Chain	Res	Type
2	L	34	THR
3	M	210	ASP
3	M	623	LYS
5	A	65	LEU
5	A	105	GLU
5	A	115	LYS
6	B	21	VAL
6	B	80	THR

Continued on next page...

Continued from previous page...

Mol	Chain	Res	Type
7	C	81	ARG
7	C	101	THR
8	D	28	LYS
8	D	39	TYR
8	D	84	SER
8	D	109	SER
8	D	119	THR
9	E	65	LEU
9	E	117	VAL
10	F	26	ILE
11	G	50	TYR
11	G	72	ASP
12	H	68	GLU
12	H	88	SER

Sometimes sidechains can be flipped to improve hydrogen bonding and reduce clashes. All (45) such sidechains are listed below:

Mol	Chain	Res	Type
1	K	41	GLN
1	K	286	GLN
1	K	495	ASN
1	K	552	ASN
1	K	620	ASN
2	L	69	HIS
2	L	206	HIS
2	L	253	GLN
2	L	286	GLN
2	L	441	ASN
2	L	443	ASN
2	L	458	GLN
2	L	620	ASN
2	L	681	ASN
3	M	47	GLN
3	M	112	ASN
3	M	124	ASN
3	M	258	ASN
3	M	316	GLN
3	M	409	ASN
3	M	449	GLN
3	M	572	ASN
3	M	576	ASN
4	N	80	ASN

Continued on next page...

Continued from previous page...

Mol	Chain	Res	Type
4	N	121	GLN
4	N	294	GLN
4	N	347	ASN
4	N	348	ASN
4	N	368	ASN
4	N	454	GLN
4	N	497	ASN
4	N	500	ASN
4	N	518	ASN
4	N	554	GLN
4	N	583	GLN
4	N	620	ASN
5	A	39	HIS
5	A	108	ASN
7	C	31	HIS
7	C	73	ASN
7	C	89	ASN
11	G	31	HIS
11	G	38	ASN
11	G	68	ASN
12	H	44	GLN

5.3.3 RNA [i](#)

There are no RNA molecules in this entry.

5.4 Non-standard residues in protein, DNA, RNA chains [i](#)

There are no non-standard protein/DNA/RNA residues in this entry.

5.5 Carbohydrates [i](#)

There are no monosaccharides in this entry.

5.6 Ligand geometry [i](#)

Of 2 ligands modelled in this entry, 2 are monoatomic - leaving 0 for Mogul analysis.

There are no bond length outliers.

There are no bond angle outliers.

There are no chirality outliers.

There are no torsion outliers.

There are no ring outliers.

No monomer is involved in short contacts.

5.7 Other polymers [i](#)

There are no such residues in this entry.

5.8 Polymer linkage issues [i](#)

The following chains have linkage breaks:

Mol	Chain	Number of breaks
3	M	1
4	N	1

All chain breaks are listed below:

Model	Chain	Residue-1	Atom-1	Residue-2	Atom-2	Distance (Å)
1	M	334:LYS	C	404:ASN	N	81.01
1	N	308:ASN	C	325:SER	N	26.70

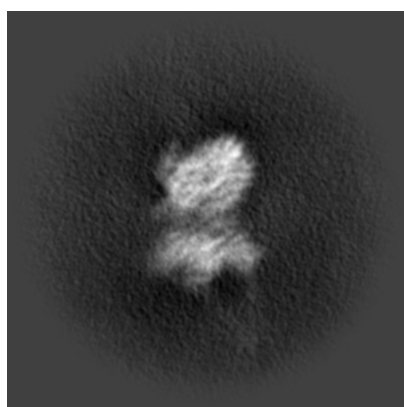
6 Map visualisation [i](#)

This section contains visualisations of the EMDB entry EMD-11102. These allow visual inspection of the internal detail of the map and identification of artifacts.

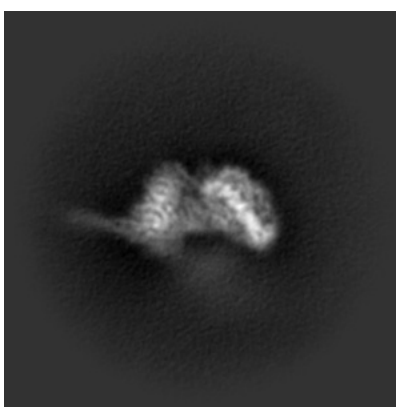
No raw map or half-maps were deposited for this entry and therefore no images, graphs, etc. pertaining to the raw map can be shown.

6.1 Orthogonal projections [i](#)

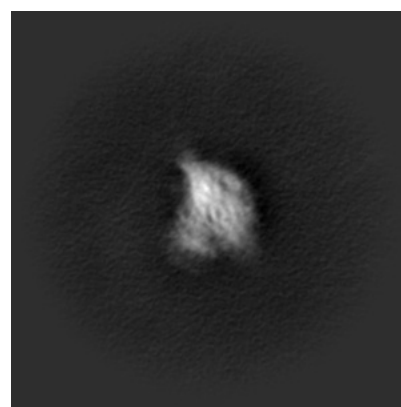
6.1.1 Primary map



X



Y



Z

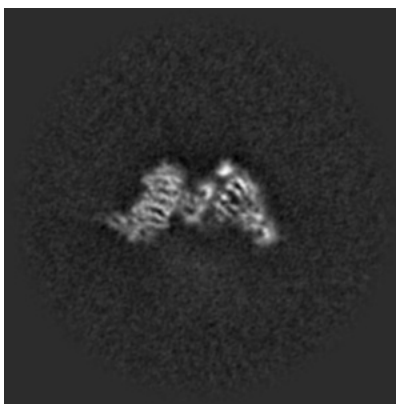
The images above show the map projected in three orthogonal directions.

6.2 Central slices [i](#)

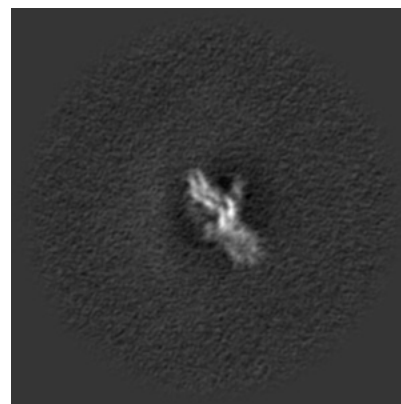
6.2.1 Primary map



X Index: 270



Y Index: 270

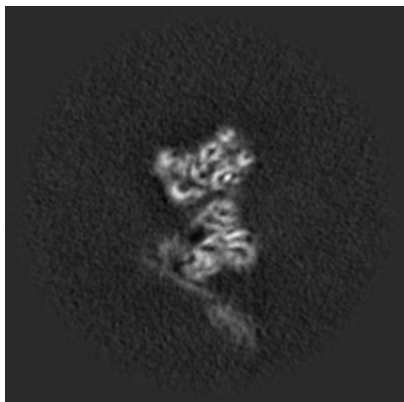


Z Index: 270

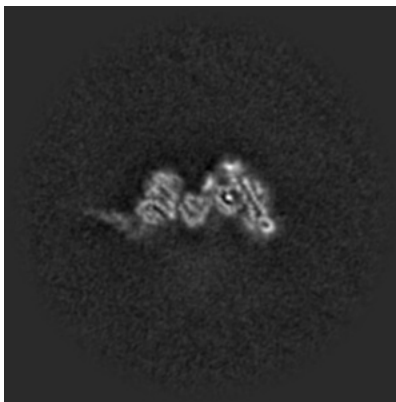
The images above show central slices of the map in three orthogonal directions.

6.3 Largest variance slices [i](#)

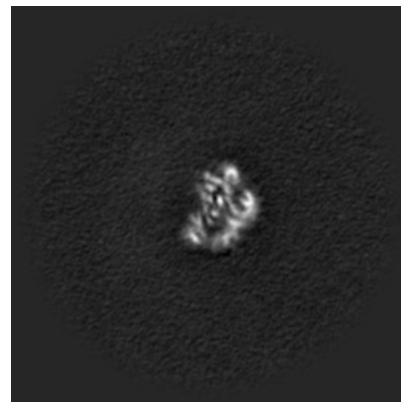
6.3.1 Primary map



X Index: 261



Y Index: 280



Z Index: 301

The images above show the largest variance slices of the map in three orthogonal directions.

6.4 Orthogonal surface views [i](#)

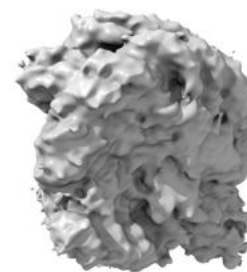
6.4.1 Primary map



X



Y



Z

The images above show the 3D surface view of the map at the recommended contour level 0.035. These images, in conjunction with the slice images, may facilitate assessment of whether an appropriate contour level has been provided.

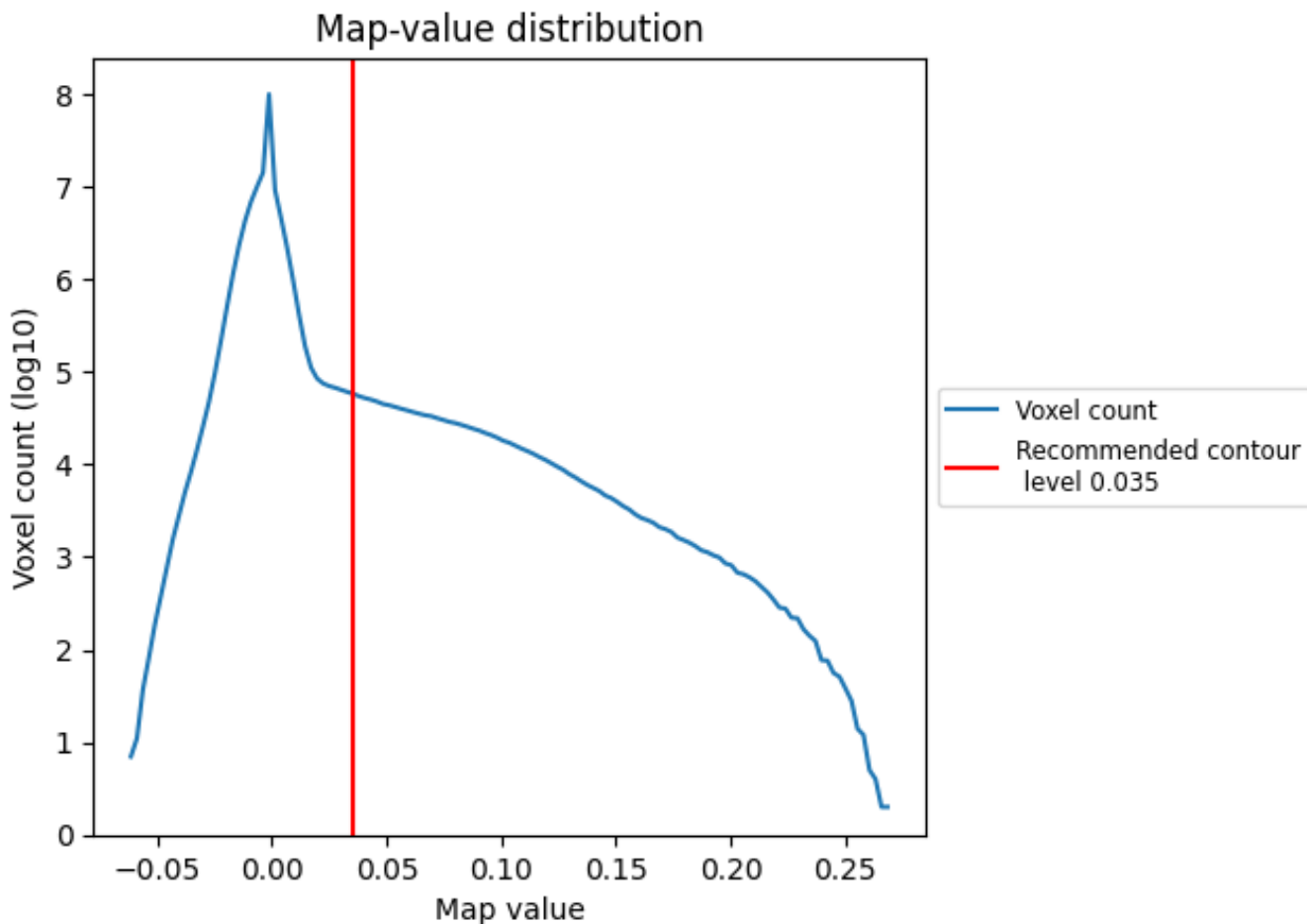
6.5 Mask visualisation

This section was not generated. No masks/segmentation were deposited.

7 Map analysis [i](#)

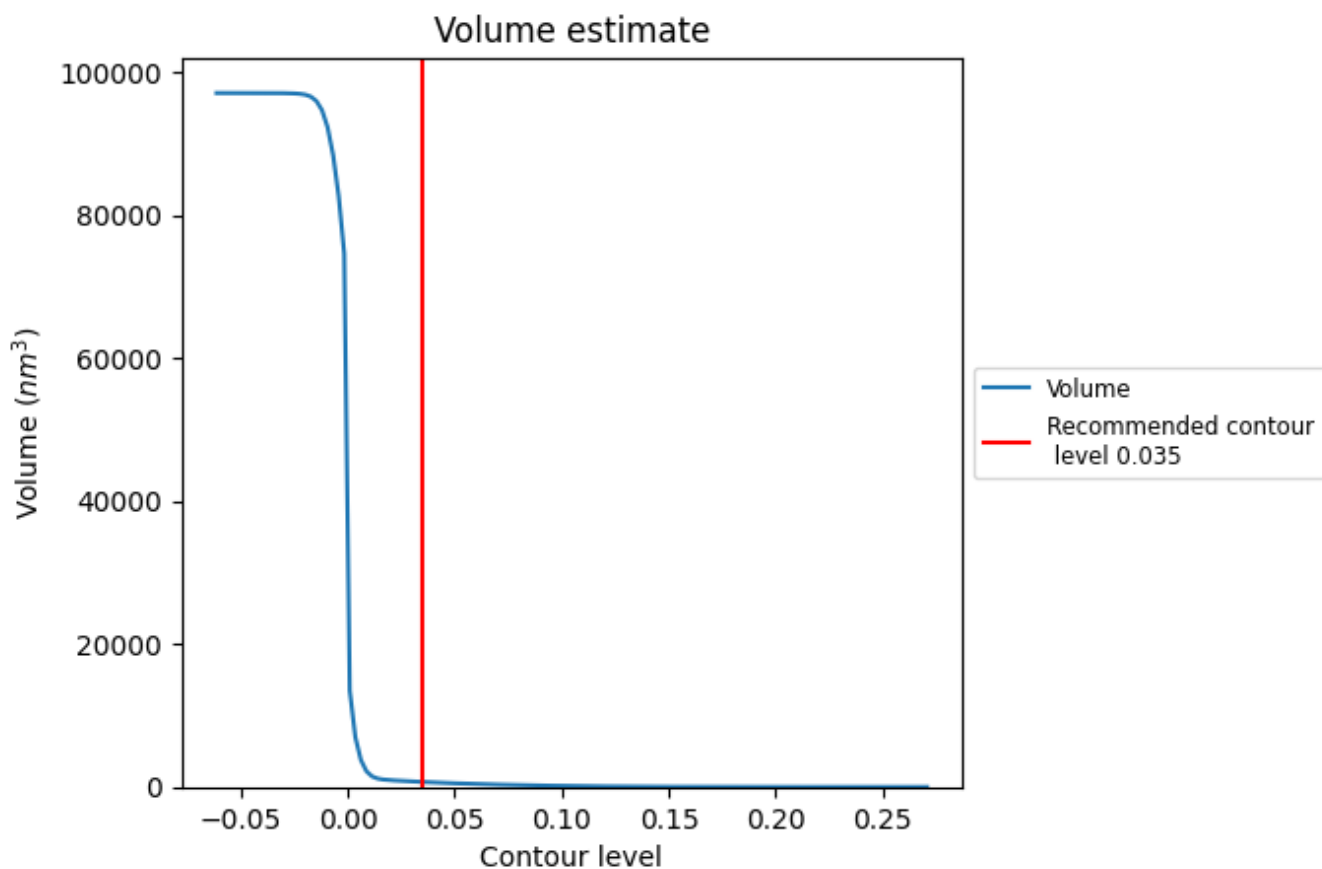
This section contains the results of statistical analysis of the map.

7.1 Map-value distribution [i](#)



The map-value distribution is plotted in 128 intervals along the x-axis. The y-axis is logarithmic. A spike in this graph at zero usually indicates that the volume has been masked.

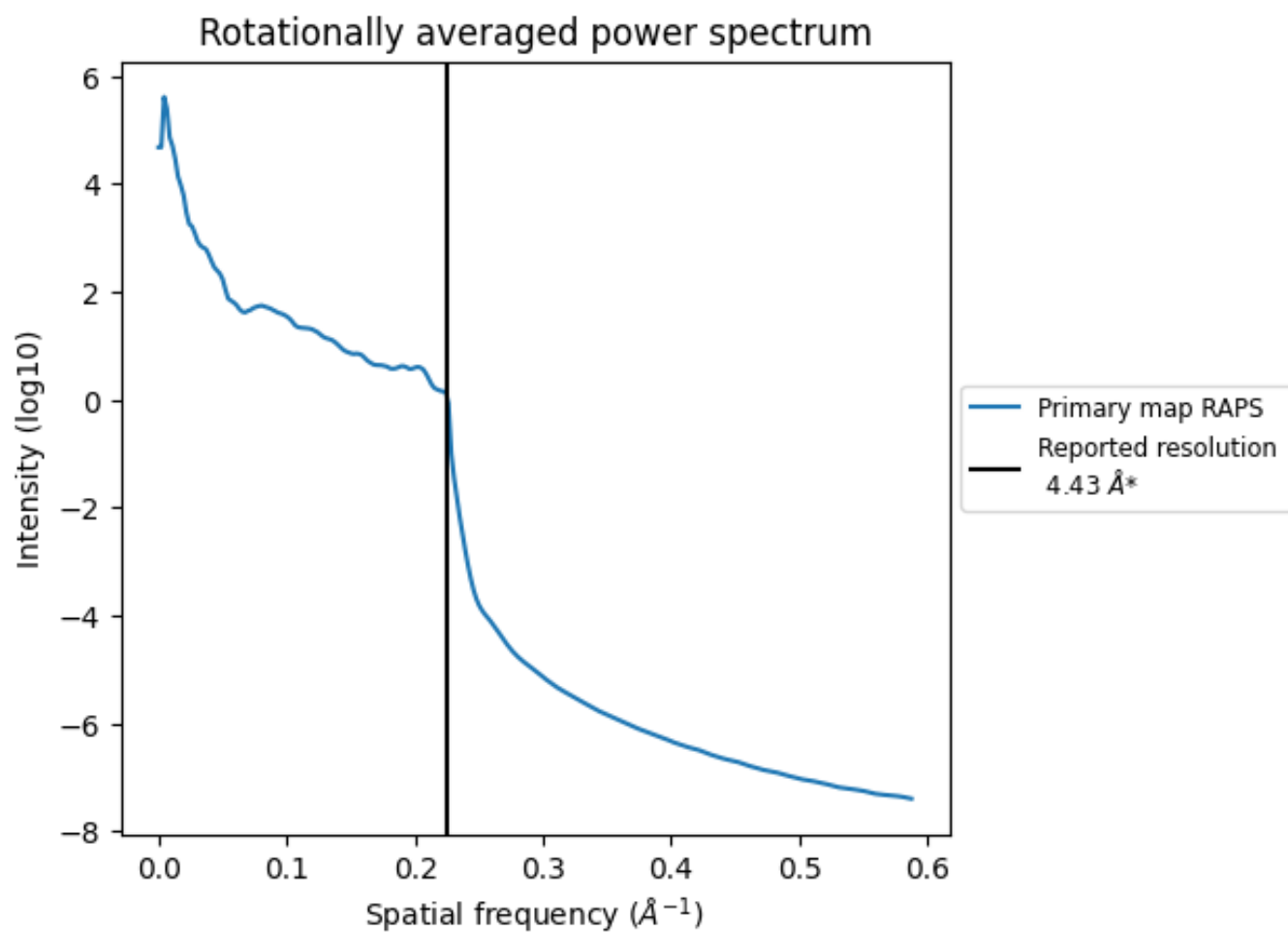
7.2 Volume estimate [\(i\)](#)



The volume at the recommended contour level is 699 nm^3 ; this corresponds to an approximate mass of 632 kDa.

The volume estimate graph shows how the enclosed volume varies with the contour level. The recommended contour level is shown as a vertical line and the intersection between the line and the curve gives the volume of the enclosed surface at the given level.

7.3 Rotationally averaged power spectrum [i](#)



*Reported resolution corresponds to spatial frequency of 0.226\AA^{-1}

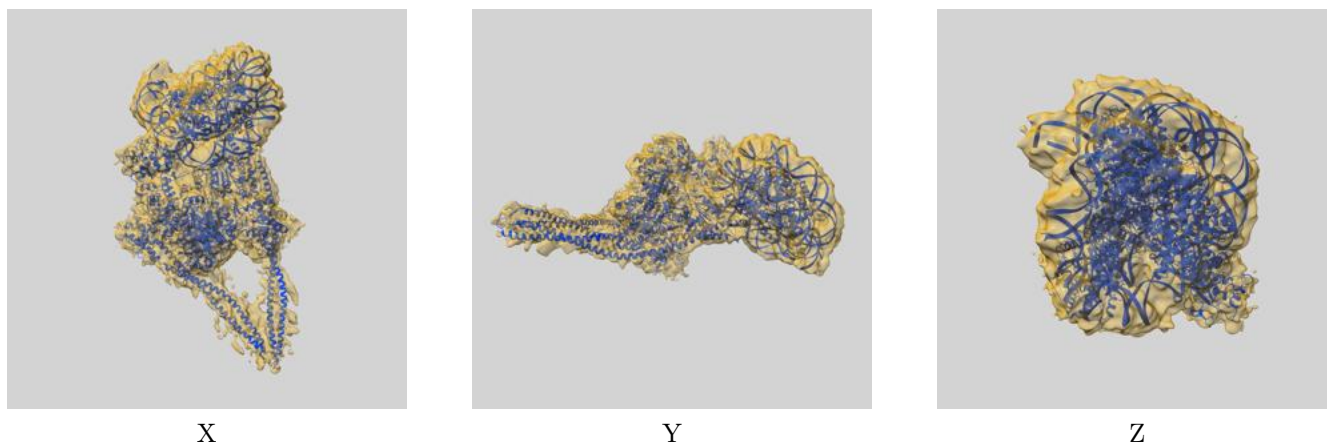
8 Fourier-Shell correlation

This section was not generated. No FSC curve or half-maps provided.

9 Map-model fit [i](#)

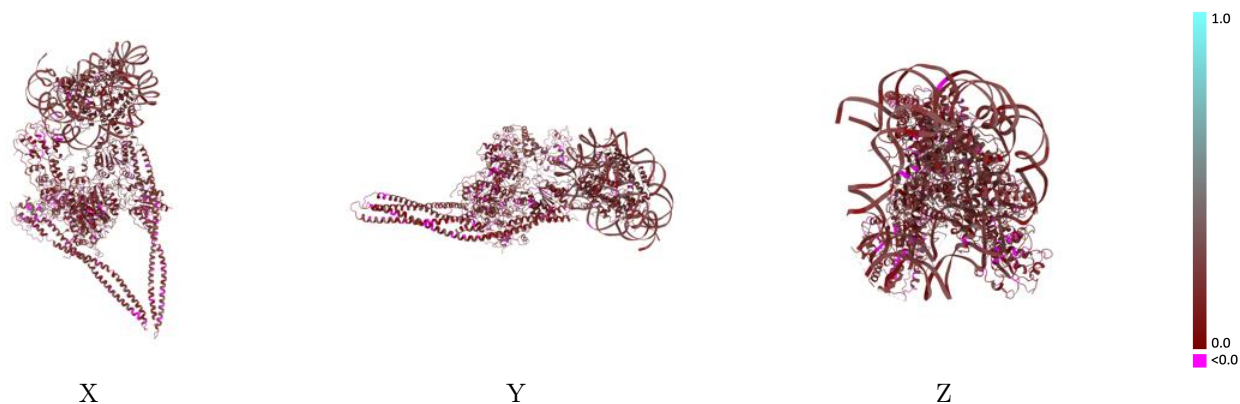
This section contains information regarding the fit between EMDB map EMD-11102 and PDB model 6Z6P. Per-residue inclusion information can be found in section 3 on page 7.

9.1 Map-model overlay [i](#)



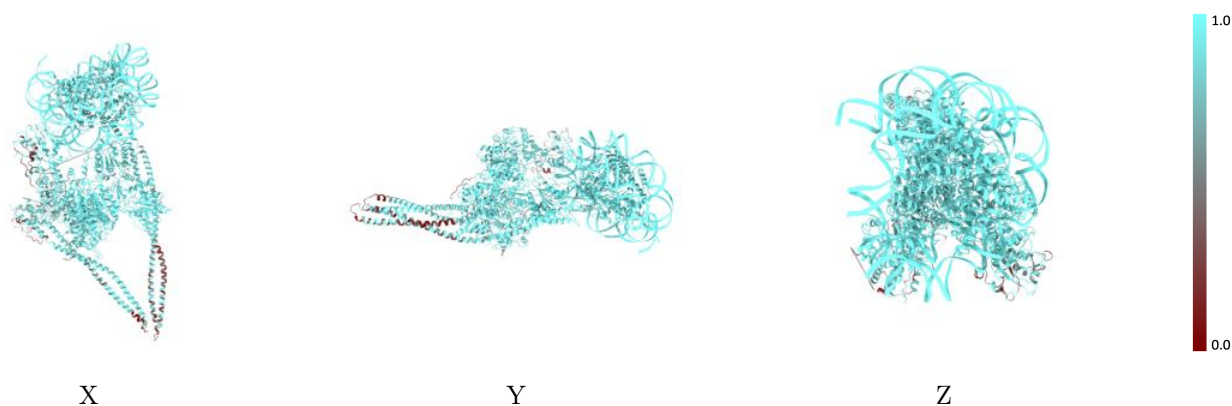
The images above show the 3D surface view of the map at the recommended contour level 0.035 at 50% transparency in yellow overlaid with a ribbon representation of the model coloured in blue. These images allow for the visual assessment of the quality of fit between the atomic model and the map.

9.2 Q-score mapped to coordinate model [\(i\)](#)



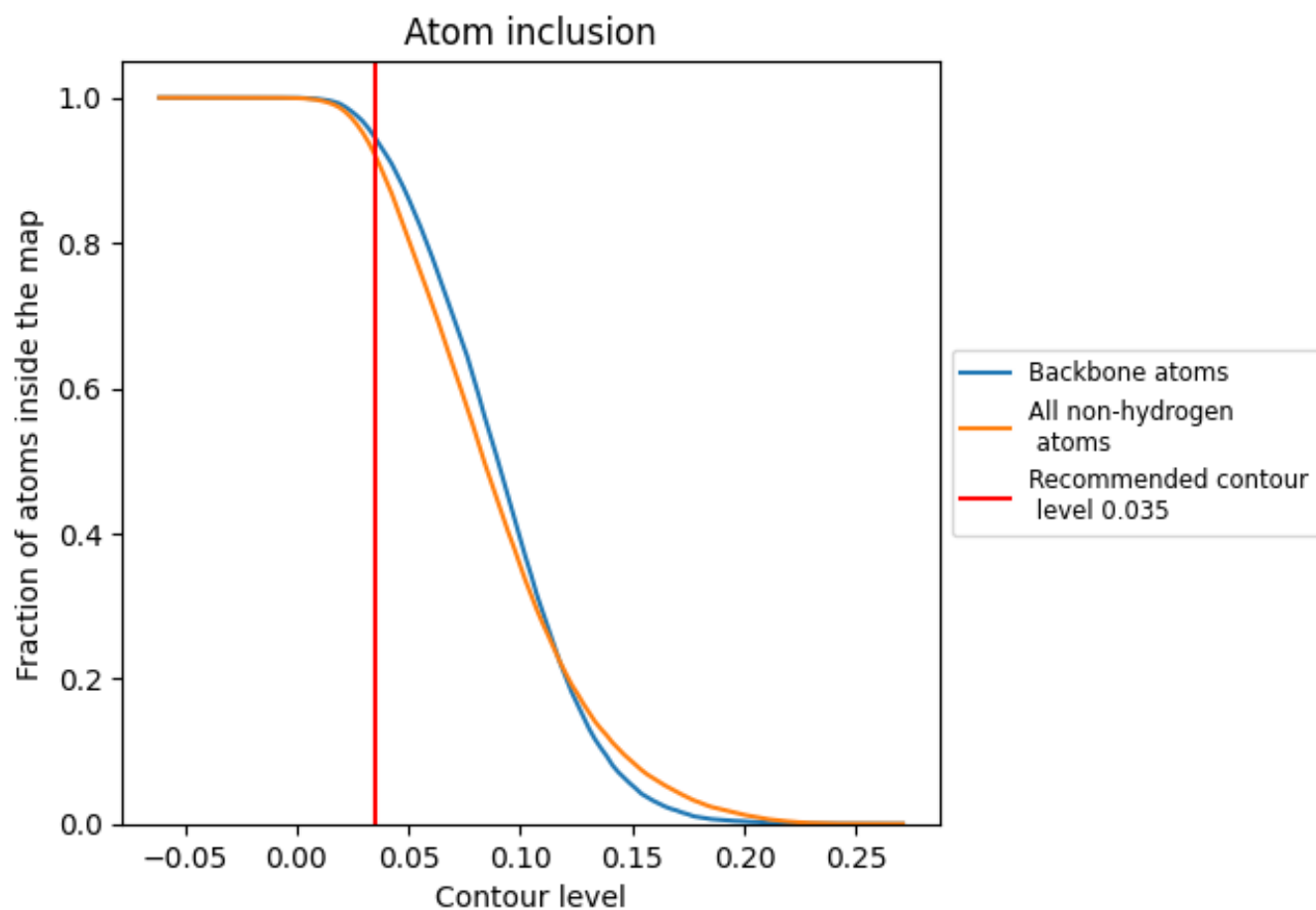
The images above show the model with each residue coloured according to its Q-score. This shows their resolvability in the map with higher Q-score values reflecting better resolvability. Please note: Q-score is calculating the resolvability of atoms, and thus high values are only expected at resolutions at which atoms can be resolved. Low Q-score values may therefore be expected for many entries.

9.3 Atom inclusion mapped to coordinate model [\(i\)](#)



The images above show the model with each residue coloured according to its atom inclusion. This shows to what extent they are inside the map at the recommended contour level (0.035).





























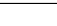
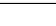
9.4 Atom inclusion [i](#)



At the recommended contour level, 94% of all backbone atoms, 92% of all non-hydrogen atoms, are inside the map.

9.5 Map-model fit summary

The table lists the average atom inclusion at the recommended contour level (0.035) and Q-score for the entire model and for each chain.

Chain	Atom inclusion	Q-score
All	 0.9209	 0.1890
A	 0.9922	 0.2030
B	 0.9858	 0.2180
C	 0.9857	 0.2120
D	 0.9835	 0.2110
E	 0.9649	 0.1990
F	 0.9445	 0.1960
G	 0.9783	 0.2200
H	 0.9690	 0.2090
I	 0.9997	 0.2250
J	 1.0000	 0.2280
K	 0.9536	 0.1840
L	 0.9465	 0.1900
M	 0.7808	 0.1500
N	 0.8098	 0.1530

