



# Full wwPDB X-ray Structure Validation Report ⓘ

Aug 24, 2022 – 04:15 pm BST

PDB ID : 7Z74  
Title : PI3KC2a core in complex with PITCOIN2  
Authors : Lo, W.T.; Roske, Y.; Daumke, O.; Haucke, V.  
Deposited on : 2022-03-15  
Resolution : 2.50 Å(reported)

This is a Full wwPDB X-ray Structure Validation Report for a publicly released PDB entry.

We welcome your comments at [validation@mail.wwpdb.org](mailto:validation@mail.wwpdb.org)

A user guide is available at

<https://www.wwpdb.org/validation/2017/XrayValidationReportHelp>

with specific help available everywhere you see the ⓘ symbol.

The types of validation reports are described at <http://www.wwpdb.org/validation/2017/FAQs#types>.

---

The following versions of software and data (see [references ⓘ](#)) were used in the production of this report:

MolProbity : 4.02b-467  
Mogul : 1.8.4, CSD as541be (2020)  
Xtriage (Phenix) : 1.13  
EDS : 2.30  
buster-report : 1.1.7 (2018)  
Percentile statistics : 20191225.v01 (using entries in the PDB archive December 25th 2019)  
Refmac : 5.8.0267  
CCP4 : 7.1.010 (Gargrove)  
Ideal geometry (proteins) : Engh & Huber (2001)  
Ideal geometry (DNA, RNA) : Parkinson et al. (1996)  
Validation Pipeline (wwPDB-VP) : 2.30

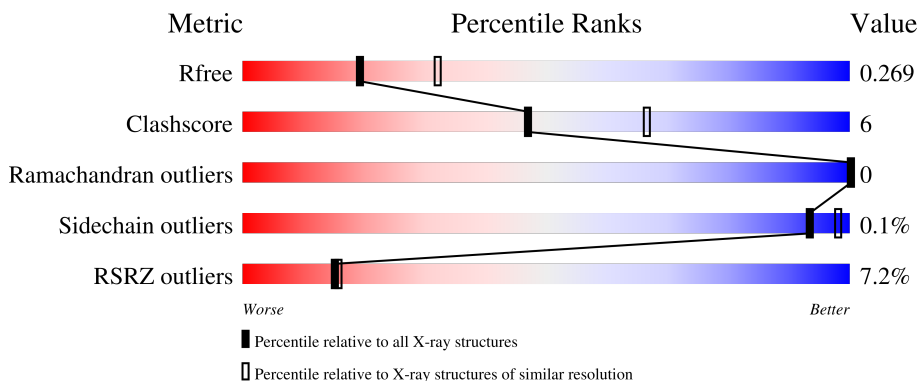
# 1 Overall quality at a glance

The following experimental techniques were used to determine the structure:

*X-RAY DIFFRACTION*

The reported resolution of this entry is 2.50 Å.

Percentile scores (ranging between 0-100) for global validation metrics of the entry are shown in the following graphic. The table shows the number of entries on which the scores are based.



Metric	Whole archive (#Entries)	Similar resolution (#Entries, resolution range(Å))
$R_{free}$	130704	4661 (2.50-2.50)
Clashscore	141614	5346 (2.50-2.50)
Ramachandran outliers	138981	5231 (2.50-2.50)
Sidechain outliers	138945	5233 (2.50-2.50)
RSRZ outliers	127900	4559 (2.50-2.50)

The table below summarises the geometric issues observed across the polymeric chains and their fit to the electron density. The red, orange, yellow and green segments of the lower bar indicate the fraction of residues that contain outliers for  $\geq 3$ , 2, 1 and 0 types of geometric quality criteria respectively. A grey segment represents the fraction of residues that are not modelled. The numeric value for each fraction is indicated below the corresponding segment, with a dot representing fractions  $\leq 5\%$ . The upper red bar (where present) indicates the fraction of residues that have poor fit to the electron density. The numeric value is given above the bar.

Mol	Chain	Length	Quality of chain
1	A	910	

## 2 Entry composition

There are 4 unique types of molecules in this entry. The entry contains 6615 atoms, of which 0 are hydrogens and 0 are deuteriums.

In the tables below, the ZeroOcc column contains the number of atoms modelled with zero occupancy, the AltConf column contains the number of residues with at least one atom in alternate conformation and the Trace column contains the number of residues modelled with at most 2 atoms.

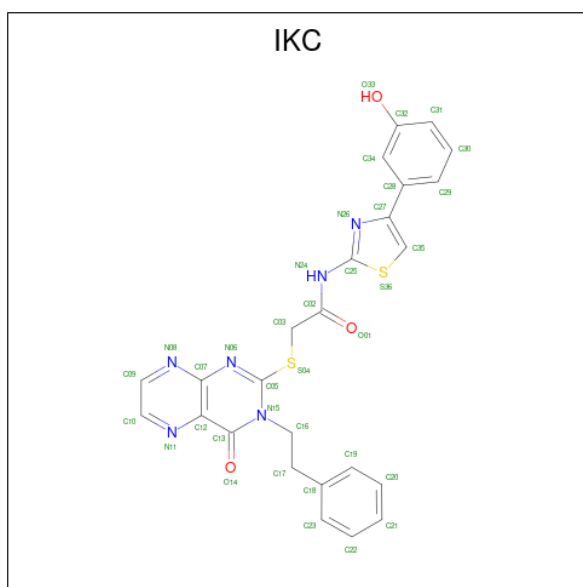
- Molecule 1 is a protein called Phosphatidylinositol 4-phosphate 3-kinase C2 domain-containing subunit alpha.

Mol	Chain	Residues	Atoms					ZeroOcc	AltConf	Trace
			Total	C	N	O	S			
1	A	822	6485	4170	1079	1196	40	0	2	0

There are 18 discrepancies between the modelled and reference sequences:

Chain	Residue	Modelled	Actual	Comment	Reference
A	1	GLY	PHE	engineered mutation	UNP Q61194
A	2	ALA	GLU	engineered mutation	UNP Q61194
A	267	GLY	-	linker	UNP Q61194
A	268	SER	-	linker	UNP Q61194
A	269	GLY	-	linker	UNP Q61194
A	270	SER	-	linker	UNP Q61194
A	276	SER	-	linker	UNP Q61194
A	277	ALA	-	linker	UNP Q61194
A	278	GLY	-	linker	UNP Q61194
A	279	ALA	-	linker	UNP Q61194
A	280	GLY	-	linker	UNP Q61194
A	281	SER	-	linker	UNP Q61194
A	282	GLY	-	linker	UNP Q61194
A	283	ALA	-	linker	UNP Q61194
A	286	GLY	ALA	conflict	UNP Q61194
A	353	ALA	PHE	conflict	UNP Q61194
A	354	ALA	PHE	conflict	UNP Q61194
A	427	ALA	LEU	engineered mutation	UNP Q61194

- Molecule 2 is {N}-[4-(3-hydroxyphenyl)-1,3-thiazol-2-yl]-2-[4-oxidanylidene-3-(2-phenylethyl)pteridin-2-yl]sulfanyl-ethanamide (three-letter code: IKC) (formula: C<sub>25</sub>H<sub>20</sub>N<sub>6</sub>O<sub>3</sub>S<sub>2</sub>) (labeled as "Ligand of Interest" by depositor).



Mol	Chain	Residues	Atoms					ZeroOcc	AltConf
			Total	C	N	O	S		
2	A	1	36	25	6	3	2	0	0

- Molecule 3 is 1,2-ETHANEDIOL (three-letter code: EDO) (formula:  $C_2H_6O_2$ ).



Mol	Chain	Residues	Atoms			ZeroOcc	AltConf
			Total	C	O		
3	A	1	4	2	2	0	0
3	A	1	4	2	2	0	0
3	A	1	4	2	2	0	0

*Continued on next page...*

*Continued from previous page...*

Mol	Chain	Residues	Atoms			ZeroOcc	AltConf
3	A	1	Total	C	O	0	0
			4	2	2		
3	A	1	Total	C	O	0	0
			4	2	2		

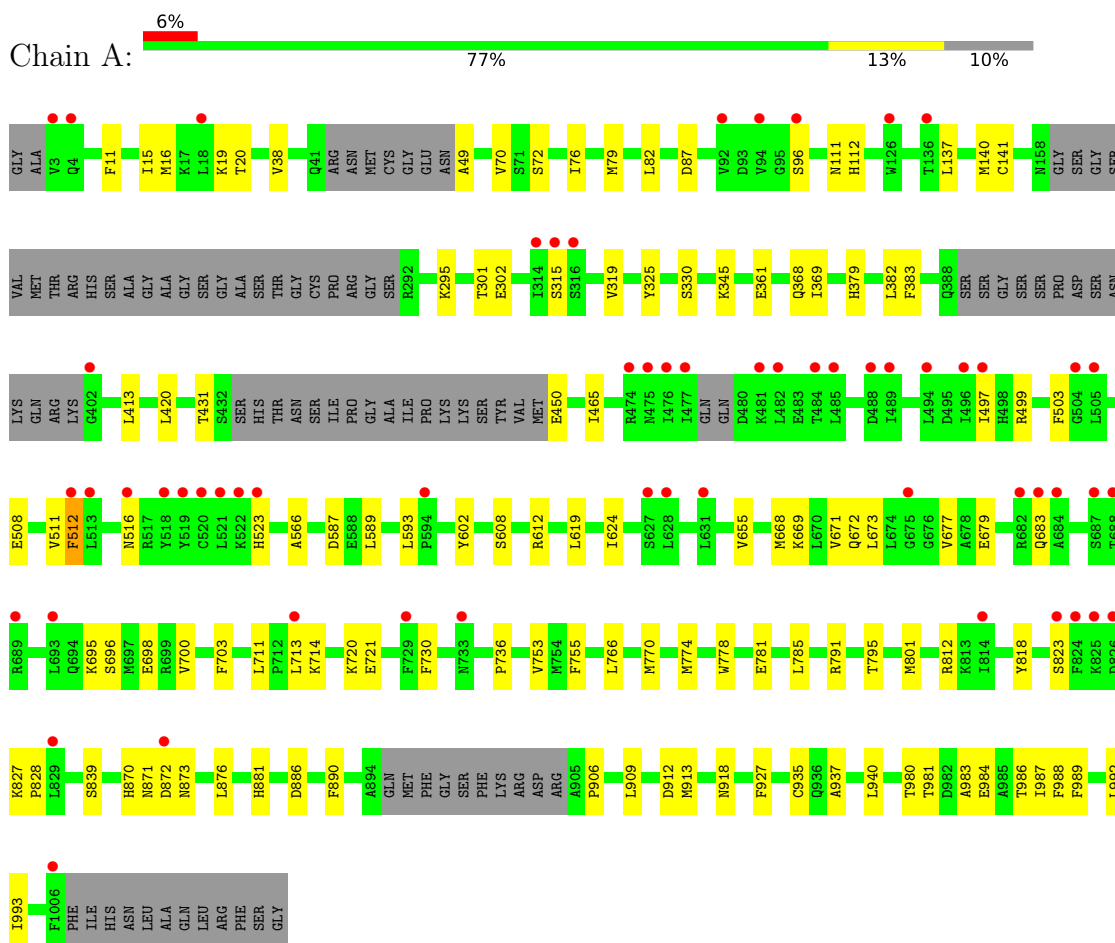
- Molecule 4 is water.

Mol	Chain	Residues	Atoms		ZeroOcc	AltConf
4	A	74	Total	O	0	0
			74	74		

### 3 Residue-property plots

These plots are drawn for all protein, RNA, DNA and oligosaccharide chains in the entry. The first graphic for a chain summarises the proportions of the various outlier classes displayed in the second graphic. The second graphic shows the sequence view annotated by issues in geometry and electron density. Residues are color-coded according to the number of geometric quality criteria for which they contain at least one outlier: green = 0, yellow = 1, orange = 2 and red = 3 or more. A red dot above a residue indicates a poor fit to the electron density ( $RSRZ > 2$ ). Stretches of 2 or more consecutive residues without any outlier are shown as a green connector. Residues present in the sample, but not in the model, are shown in grey.

- Molecule 1: Phosphatidylinositol 4-phosphate 3-kinase C2 domain-containing subunit alpha



## 4 Data and refinement statistics

Property	Value	Source
Space group	P 21 21 21	Depositor
Cell constants a, b, c, $\alpha$ , $\beta$ , $\gamma$	56.31Å 135.15Å 151.92Å 90.00° 90.00° 90.00°	Depositor
Resolution (Å)	43.26 – 2.50 47.42 – 2.50	Depositor EDS
% Data completeness (in resolution range)	99.7 (43.26-2.50) 99.7 (47.42-2.50)	Depositor EDS
$R_{merge}$	(Not available)	Depositor
$R_{sym}$	(Not available)	Depositor
$\langle I/\sigma(I) \rangle$ <sup>1</sup>	1.01 (at 2.51Å)	Xtriage
Refinement program	PHENIX 1.18.2_3874	Depositor
R, $R_{free}$	0.226 , 0.270 0.229 , 0.269	Depositor DCC
$R_{free}$ test set	2049 reflections (5.00%)	wwPDB-VP
Wilson B-factor (Å <sup>2</sup> )	69.5	Xtriage
Anisotropy	0.326	Xtriage
Bulk solvent $k_{sol}$ (e/Å <sup>3</sup> ), $B_{sol}$ (Å <sup>2</sup> )	(Not available) , (Not available)	EDS
L-test for twinning <sup>2</sup>	$\langle  L  \rangle = 0.49$ , $\langle L^2 \rangle = 0.32$	Xtriage
Estimated twinning fraction	No twinning to report.	Xtriage
$F_o, F_c$ correlation	0.95	EDS
Total number of atoms	6615	wwPDB-VP
Average B, all atoms (Å <sup>2</sup> )	86.0	wwPDB-VP

Xtriage's analysis on translational NCS is as follows: *The largest off-origin peak in the Patterson function is 4.39% of the height of the origin peak. No significant pseudotranslation is detected.*

<sup>1</sup>Intensities estimated from amplitudes.

<sup>2</sup>Theoretical values of  $\langle |L| \rangle$ ,  $\langle L^2 \rangle$  for acentric reflections are 0.5, 0.333 respectively for untwinned datasets, and 0.375, 0.2 for perfectly twinned datasets.

## 5 Model quality

### 5.1 Standard geometry

Bond lengths and bond angles in the following residue types are not validated in this section: IKC, EDO

The Z score for a bond length (or angle) is the number of standard deviations the observed value is removed from the expected value. A bond length (or angle) with  $|Z| > 5$  is considered an outlier worth inspection. RMSZ is the root-mean-square of all Z scores of the bond lengths (or angles).

Mol	Chain	Bond lengths		Bond angles	
		RMSZ	# $ Z  > 5$	RMSZ	# $ Z  > 5$
1	A	0.42	2/6622 (0.0%)	0.61	2/8974 (0.0%)

All (2) bond length outliers are listed below:

Mol	Chain	Res	Type	Atoms	Z	Observed(Å)	Ideal(Å)
1	A	839[A]	SER	C-O	6.82	1.36	1.23
1	A	839[B]	SER	C-O	6.82	1.36	1.23

All (2) bond angle outliers are listed below:

Mol	Chain	Res	Type	Atoms	Z	Observed(°)	Ideal(°)
1	A	839[A]	SER	CA-C-O	5.68	132.03	120.10
1	A	839[B]	SER	CA-C-O	5.68	132.03	120.10

There are no chirality outliers.

There are no planarity outliers.

### 5.2 Too-close contacts

In the following table, the Non-H and H(model) columns list the number of non-hydrogen atoms and hydrogen atoms in the chain respectively. The H(added) column lists the number of hydrogen atoms added and optimized by MolProbity. The Clashes column lists the number of clashes within the asymmetric unit, whereas Symm-Clashes lists symmetry-related clashes.

Mol	Chain	Non-H	H(model)	H(added)	Clashes	Symm-Clashes
1	A	6485	0	6480	81	0
2	A	36	0	0	0	0
3	A	20	0	30	0	0
4	A	74	0	0	0	0

*Continued on next page...*



*Continued from previous page...*

Mol	Chain	Non-H	H(model)	H(added)	Clashes	Symm-Clashes
All	All	6615	0	6510	81	0

The all-atom clashscore is defined as the number of clashes found per 1000 atoms (including hydrogen atoms). The all-atom clashscore for this structure is 6.

All (81) close contacts within the same asymmetric unit are listed below, sorted by their clash magnitude.

Atom-1	Atom-2	Interatomic distance (Å)	Clash overlap (Å)
1:A:812:ARG:HG2	1:A:871:ASN:HB2	1.40	1.03
1:A:873:ASN:ND2	1:A:886:ASP:HB2	1.91	0.84
1:A:619:LEU:HD21	1:A:655:VAL:HG22	1.69	0.75
1:A:714:LYS:HG3	1:A:791:ARG:NH1	2.04	0.73
1:A:668:MET:O	1:A:672:GLN:HG3	1.94	0.68
1:A:980:THR:HB	1:A:984:GLU:HG3	1.77	0.67
1:A:96:SER:HA	1:A:137:LEU:HD13	1.77	0.66
1:A:714:LYS:HG3	1:A:791:ARG:HH12	1.59	0.66
1:A:981:THR:HG22	1:A:984:GLU:HG2	1.77	0.66
1:A:72:SER:HB2	1:A:76:ILE:HD11	1.78	0.65
1:A:19:LYS:HG2	1:A:655:VAL:HG23	1.79	0.64
1:A:695:LYS:O	1:A:698:GLU:HG2	1.99	0.61
1:A:714:LYS:HE2	1:A:791:ARG:NH1	2.15	0.61
1:A:679:GLU:O	1:A:683:GLN:HG3	2.03	0.59
1:A:671:VAL:HG21	1:A:795:THR:HB	1.83	0.58
1:A:301:THR:HA	1:A:368:GLN:HE21	1.69	0.57
1:A:983:ALA:O	1:A:987:ILE:HG12	2.04	0.57
1:A:671:VAL:HG21	1:A:795:THR:CB	2.35	0.57
1:A:753:VAL:HG11	1:A:801:MET:HE3	1.88	0.56
1:A:781:GLU:HG3	1:A:940:LEU:HD22	1.88	0.56
1:A:909:LEU:HA	1:A:913:MET:CE	2.36	0.55
1:A:11:PHE:O	1:A:15:ILE:HG12	2.07	0.54
1:A:497:ILE:HD13	1:A:523:HIS:CD2	2.43	0.54
1:A:673:LEU:O	1:A:677:VAL:HG23	2.07	0.54
1:A:989:PHE:HA	1:A:992:LEU:HD12	1.90	0.54
1:A:431:THR:OG1	1:A:450:GLU:HB2	2.09	0.53
1:A:677:VAL:HG13	1:A:696:SER:HB2	1.90	0.53
1:A:912:ASP:N	1:A:912:ASP:OD1	2.40	0.53
1:A:512:PHE:O	1:A:512:PHE:CD1	2.62	0.52
1:A:669:LYS:O	1:A:673:LEU:HG	2.10	0.52
1:A:499:ARG:NH2	1:A:503:PHE:O	2.38	0.52
1:A:870:HIS:CE1	1:A:872:ASP:HB2	2.45	0.52
1:A:730:PHE:HB2	1:A:736:PRO:HD2	1.93	0.51

*Continued on next page...*

*Continued from previous page...*

Atom-1	Atom-2	Interatomic distance (Å)	Clash overlap (Å)
1:A:753:VAL:HG11	1:A:801:MET:CE	2.41	0.51
1:A:566:ALA:HB2	1:A:602:TYR:CE1	2.46	0.51
1:A:766:LEU:HD23	1:A:890:PHE:HE2	1.76	0.50
1:A:873:ASN:HD22	1:A:886:ASP:HB2	1.73	0.50
1:A:413:LEU:O	1:A:420:LEU:HD12	2.12	0.50
1:A:876:LEU:HD12	1:A:881:HIS:O	2.12	0.50
1:A:512:PHE:HE1	1:A:516:ASN:CG	2.14	0.49
1:A:330:SER:OG	1:A:379:HIS:HB2	2.13	0.49
1:A:720:LYS:HG3	1:A:721:GLU:HB3	1.95	0.48
1:A:778:TRP:CE2	1:A:937:ALA:HB1	2.49	0.48
1:A:508:GLU:O	1:A:511:VAL:HG22	2.14	0.48
1:A:671:VAL:HG23	1:A:755:PHE:CE2	2.49	0.47
1:A:345:LYS:HG2	1:A:361:GLU:OE1	2.15	0.47
1:A:497:ILE:HD13	1:A:523:HIS:HD2	1.80	0.46
1:A:566:ALA:HB2	1:A:602:TYR:CZ	2.50	0.46
1:A:87:ASP:OD1	1:A:87:ASP:N	2.48	0.46
1:A:906:PRO:HG3	1:A:992:LEU:HD22	1.97	0.46
1:A:49:ALA:O	1:A:70:VAL:HG22	2.16	0.46
1:A:608:SER:O	1:A:612:ARG:HG3	2.16	0.46
1:A:140:MET:HE2	1:A:141:CYS:H	1.81	0.46
1:A:770:MET:O	1:A:774:MET:HG3	2.16	0.45
1:A:988:PHE:CE2	1:A:992:LEU:HD11	2.52	0.45
1:A:589:LEU:HD22	1:A:624:ILE:HD12	1.97	0.45
1:A:935:CYS:SG	1:A:986:THR:HG23	2.57	0.45
1:A:295:LYS:HB3	1:A:465:ILE:HD13	1.99	0.45
1:A:619:LEU:HD23	1:A:619:LEU:HA	1.79	0.44
1:A:711:LEU:HD11	1:A:801:MET:HE3	2.00	0.43
1:A:818:TYR:OH	1:A:823:SER:HB2	2.18	0.43
1:A:812:ARG:HG2	1:A:871:ASN:CB	2.29	0.43
1:A:918:ASN:OD1	1:A:927:PHE:HB2	2.19	0.42
1:A:140:MET:HE3	1:A:140:MET:HA	2.01	0.42
1:A:382:LEU:HD12	1:A:383:PHE:H	1.83	0.42
1:A:700:VAL:O	1:A:703:PHE:HB3	2.19	0.42
1:A:315:SER:O	1:A:319:VAL:HG23	2.18	0.42
1:A:325:TYR:HB3	1:A:382:LEU:HD11	2.02	0.42
1:A:827:LYS:N	1:A:828:PRO:HD3	2.34	0.42
1:A:79:MET:HA	1:A:82:LEU:HD12	2.02	0.42
1:A:778:TRP:CE3	1:A:785:LEU:HD12	2.55	0.42
1:A:593:LEU:HA	1:A:593:LEU:HD23	1.83	0.41
1:A:302:GLU:O	1:A:369:ILE:HG12	2.20	0.41
1:A:508:GLU:H	1:A:508:GLU:CD	2.24	0.41

*Continued on next page...*

Continued from previous page...

Atom-1	Atom-2	Interatomic distance (Å)	Clash overlap (Å)
1:A:989:PHE:O	1:A:993:ILE:HG13	2.21	0.41
1:A:16:MET:O	1:A:20:THR:HG23	2.21	0.41
1:A:111:ASN:OD1	1:A:112:HIS:N	2.54	0.41
1:A:38:VAL:HG22	1:A:587:ASP:CG	2.41	0.40
1:A:714:LYS:HE2	1:A:791:ARG:HH12	1.85	0.40
1:A:827:LYS:N	1:A:828:PRO:CD	2.84	0.40
1:A:713:LEU:HB2	1:A:801:MET:HE1	2.03	0.40

There are no symmetry-related clashes.

### 5.3 Torsion angles [\(i\)](#)

#### 5.3.1 Protein backbone [\(i\)](#)

In the following table, the Percentiles column shows the percent Ramachandran outliers of the chain as a percentile score with respect to all X-ray entries followed by that with respect to entries of similar resolution.

The Analysed column shows the number of residues for which the backbone conformation was analysed, and the total number of residues.

Mol	Chain	Analysed	Favoured	Allowed	Outliers	Percentiles
1	A	810/910 (89%)	796 (98%)	14 (2%)	0	<a href="#">100</a> <a href="#">100</a>

There are no Ramachandran outliers to report.

#### 5.3.2 Protein sidechains [\(i\)](#)

In the following table, the Percentiles column shows the percent sidechain outliers of the chain as a percentile score with respect to all X-ray entries followed by that with respect to entries of similar resolution.

The Analysed column shows the number of residues for which the sidechain conformation was analysed, and the total number of residues.

Mol	Chain	Analysed	Rotameric	Outliers	Percentiles
1	A	715/800 (89%)	714 (100%)	1 (0%)	<a href="#">93</a> <a href="#">98</a>

All (1) residues with a non-rotameric sidechain are listed below:

Mol	Chain	Res	Type
1	A	512	PHE

Sometimes sidechains can be flipped to improve hydrogen bonding and reduce clashes. All (5) such sidechains are listed below:

Mol	Chain	Res	Type
1	A	352	ASN
1	A	368	GLN
1	A	523	HIS
1	A	690	GLN
1	A	936	GLN

### 5.3.3 RNA [i](#)

There are no RNA molecules in this entry.

### 5.4 Non-standard residues in protein, DNA, RNA chains [i](#)

There are no non-standard protein/DNA/RNA residues in this entry.

### 5.5 Carbohydrates [i](#)

There are no monosaccharides in this entry.

### 5.6 Ligand geometry [i](#)

6 ligands are modelled in this entry.

In the following table, the Counts columns list the number of bonds (or angles) for which Mogul statistics could be retrieved, the number of bonds (or angles) that are observed in the model and the number of bonds (or angles) that are defined in the Chemical Component Dictionary. The Link column lists molecule types, if any, to which the group is linked. The Z score for a bond length (or angle) is the number of standard deviations the observed value is removed from the expected value. A bond length (or angle) with  $|Z| > 2$  is considered an outlier worth inspection. RMSZ is the root-mean-square of all Z scores of the bond lengths (or angles).

Mol	Type	Chain	Res	Link	Bond lengths			Bond angles		
					Counts	RMSZ	# Z  > 2	Counts	RMSZ	# Z  > 2
3	EDO	A	1102	-	3,3,3	0.55	0	2,2,2	0.10	0
2	IKC	A	1101	-	37,40,40	2.18	6 (16%)	44,55,55	1.96	11 (25%)
3	EDO	A	1104	-	3,3,3	0.49	0	2,2,2	0.29	0

Mol	Type	Chain	Res	Link	Bond lengths			Bond angles		
					Counts	RMSZ	# Z  > 2	Counts	RMSZ	# Z  > 2
3	EDO	A	1106	-	3,3,3	0.44	0	2,2,2	0.33	0
3	EDO	A	1103	-	3,3,3	0.48	0	2,2,2	0.23	0
3	EDO	A	1105	-	3,3,3	0.49	0	2,2,2	0.32	0

In the following table, the Chirals column lists the number of chiral outliers, the number of chiral centers analysed, the number of these observed in the model and the number defined in the Chemical Component Dictionary. Similar counts are reported in the Torsion and Rings columns. '-' means no outliers of that kind were identified.

Mol	Type	Chain	Res	Link	Chirals	Torsions	Rings
3	EDO	A	1102	-	-	1/1/1/1	-
2	IKC	A	1101	-	-	7/16/18/18	0/5/5/5
3	EDO	A	1104	-	-	0/1/1/1	-
3	EDO	A	1106	-	-	0/1/1/1	-
3	EDO	A	1103	-	-	0/1/1/1	-
3	EDO	A	1105	-	-	0/1/1/1	-

All (6) bond length outliers are listed below:

Mol	Chain	Res	Type	Atoms	Z	Observed(Å)	Ideal(Å)
2	A	1101	IKC	C28-C27	-5.90	1.39	1.48
2	A	1101	IKC	C25-N24	5.51	1.46	1.36
2	A	1101	IKC	C05-S04	5.27	1.82	1.74
2	A	1101	IKC	C02-N24	4.71	1.46	1.35
2	A	1101	IKC	C05-N06	3.80	1.35	1.29
2	A	1101	IKC	C13-N15	-3.75	1.32	1.40

All (11) bond angle outliers are listed below:

Mol	Chain	Res	Type	Atoms	Z	Observed(°)	Ideal(°)
2	A	1101	IKC	C27-C35-S36	-5.36	105.20	111.79
2	A	1101	IKC	C35-C27-C28	-4.87	122.67	129.44
2	A	1101	IKC	N15-C05-N06	-4.15	120.90	124.94
2	A	1101	IKC	C03-S04-C05	4.11	107.69	99.09
2	A	1101	IKC	C03-C02-N24	3.57	119.30	114.41
2	A	1101	IKC	C25-N24-C02	-3.30	120.62	129.54
2	A	1101	IKC	C12-C07-N06	-3.02	118.87	123.18
2	A	1101	IKC	C12-C13-N15	2.78	119.94	114.36
2	A	1101	IKC	O14-C13-C12	-2.62	119.55	124.19
2	A	1101	IKC	C13-C12-N11	2.35	121.06	116.23
2	A	1101	IKC	C09-N08-C07	2.08	120.00	115.44

There are no chirality outliers.

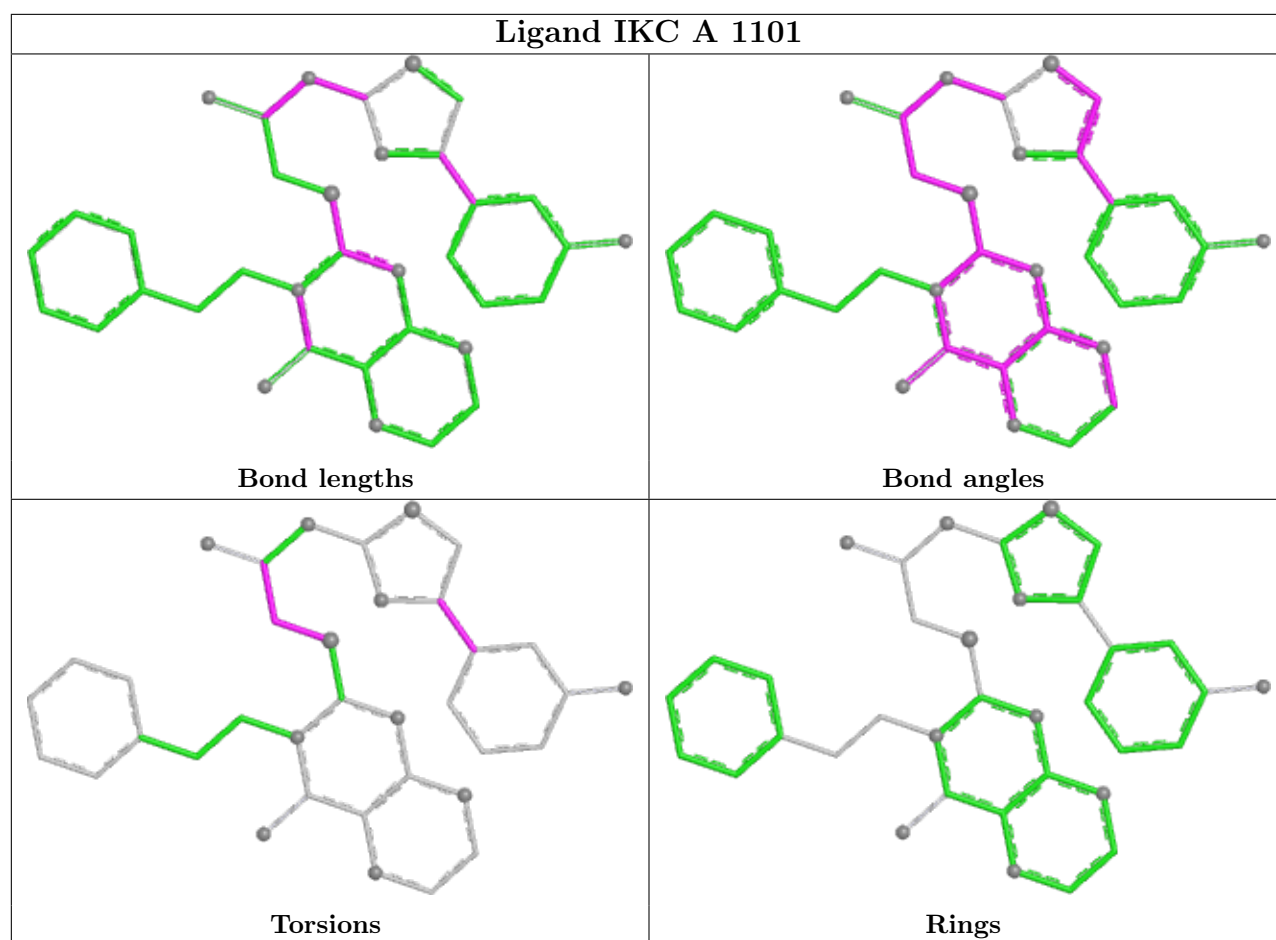
All (8) torsion outliers are listed below:

Mol	Chain	Res	Type	Atoms
2	A	1101	IKC	N24-C02-C03-S04
2	A	1101	IKC	C02-C03-S04-C05
2	A	1101	IKC	C35-C27-C28-C29
2	A	1101	IKC	N26-C27-C28-C29
2	A	1101	IKC	C35-C27-C28-C34
2	A	1101	IKC	N26-C27-C28-C34
2	A	1101	IKC	O01-C02-C03-S04
3	A	1102	EDO	O1-C1-C2-O2

There are no ring outliers.

No monomer is involved in short contacts.

The following is a two-dimensional graphical depiction of Mogul quality analysis of bond lengths, bond angles, torsion angles, and ring geometry for all instances of the Ligand of Interest. In addition, ligands with molecular weight > 250 and outliers as shown on the validation Tables will also be included. For torsion angles, if less than 5% of the Mogul distribution of torsion angles is within 10 degrees of the torsion angle in question, then that torsion angle is considered an outlier. Any bond that is central to one or more torsion angles identified as an outlier by Mogul will be highlighted in the graph. For rings, the root-mean-square deviation (RMSD) between the ring in question and similar rings identified by Mogul is calculated over all ring torsion angles. If the average RMSD is greater than 60 degrees and the minimal RMSD between the ring in question and any Mogul-identified rings is also greater than 60 degrees, then that ring is considered an outlier. The outliers are highlighted in purple. The color gray indicates Mogul did not find sufficient equivalents in the CSD to analyse the geometry.



## 5.7 Other polymers [i](#)

There are no such residues in this entry.

## 5.8 Polymer linkage issues [i](#)

There are no chain breaks in this entry.

## 6 Fit of model and data

### 6.1 Protein, DNA and RNA chains

In the following table, the column labelled ‘#RSRZ> 2’ contains the number (and percentage) of RSRZ outliers, followed by percent RSRZ outliers for the chain as percentile scores relative to all X-ray entries and entries of similar resolution. The OWAB column contains the minimum, median, 95<sup>th</sup> percentile and maximum values of the occupancy-weighted average B-factor per residue. The column labelled ‘Q< 0.9’ lists the number of (and percentage) of residues with an average occupancy less than 0.9.

Mol	Chain	Analysed	<RSRZ>	#RSRZ>2	OWAB(Å <sup>2</sup> )	Q<0.9
1	A	822/910 (90%)	0.50	59 (7%) <b>15</b> <b>16</b>	52, 81, 138, 197	0

All (59) RSRZ outliers are listed below:

Mol	Chain	Res	Type	RSRZ
1	A	824	PHE	6.2
1	A	733	ASN	5.1
1	A	475	ASN	5.0
1	A	823	SER	4.7
1	A	485	LEU	4.6
1	A	729	PHE	4.0
1	A	504	GLY	4.0
1	A	489	ILE	3.8
1	A	477	ILE	3.8
1	A	682	ARG	3.8
1	A	314	ILE	3.6
1	A	826	ASP	3.5
1	A	520	CYS	3.5
1	A	519	TYR	3.4
1	A	94	VAL	3.4
1	A	494	LEU	3.3
1	A	523	HIS	3.2
1	A	872	ASP	3.2
1	A	521	LEU	3.2
1	A	829	LEU	3.1
1	A	516	ASN	3.0
1	A	684	ALA	3.0
1	A	688	THR	2.9
1	A	476	ILE	2.9
1	A	92	VAL	2.8
1	A	522	LYS	2.7
1	A	683	GLN	2.7

*Continued on next page...*



*Continued from previous page...*

Mol	Chain	Res	Type	RSRZ
1	A	825	LYS	2.6
1	A	505	LEU	2.6
1	A	594	PRO	2.6
1	A	3	VAL	2.6
1	A	484	THR	2.6
1	A	4	GLN	2.5
1	A	627	SER	2.5
1	A	693	LEU	2.5
1	A	687	SER	2.5
1	A	1006	PHE	2.5
1	A	675	GLY	2.5
1	A	18	LEU	2.4
1	A	482	LEU	2.4
1	A	512	PHE	2.4
1	A	497	ILE	2.4
1	A	496	ILE	2.4
1	A	474	ARG	2.4
1	A	689	ARG	2.3
1	A	316	SER	2.3
1	A	713	LEU	2.3
1	A	136	THR	2.3
1	A	631	LEU	2.3
1	A	126	TRP	2.3
1	A	96	SER	2.2
1	A	814	ILE	2.2
1	A	513	LEU	2.1
1	A	481	LYS	2.1
1	A	488	ASP	2.1
1	A	315	SER	2.1
1	A	402	GLY	2.1
1	A	628	LEU	2.0
1	A	518	TYR	2.0

## 6.2 Non-standard residues in protein, DNA, RNA chains [i](#)

There are no non-standard protein/DNA/RNA residues in this entry.

## 6.3 Carbohydrates [i](#)

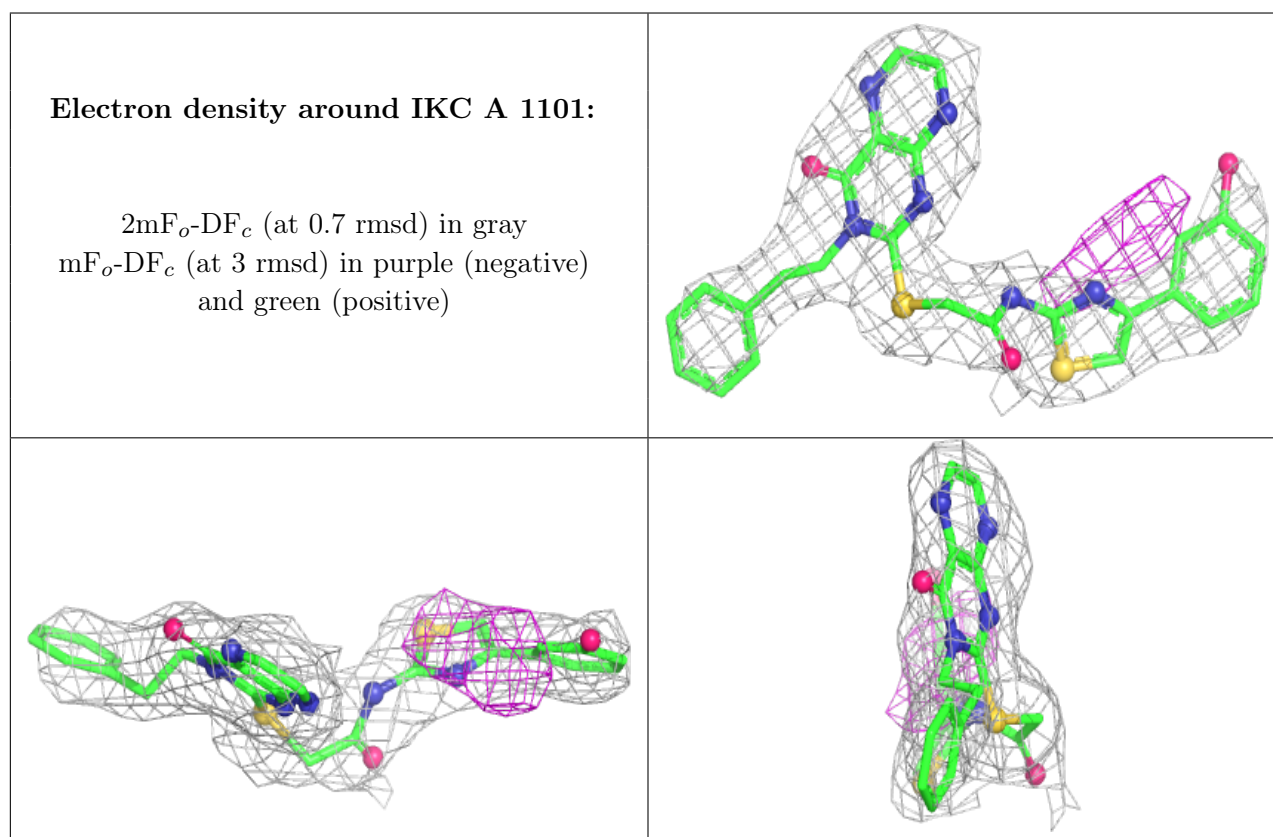
There are no monosaccharides in this entry.

## 6.4 Ligands [i](#)

In the following table, the Atoms column lists the number of modelled atoms in the group and the number defined in the chemical component dictionary. The B-factors column lists the minimum, median, 95<sup>th</sup> percentile and maximum values of B factors of atoms in the group. The column labelled 'Q< 0.9' lists the number of atoms with occupancy less than 0.9.

Mol	Type	Chain	Res	Atoms	RSCC	RSR	B-factors(Å <sup>2</sup> )	Q<0.9
3	EDO	A	1106	4/4	0.68	0.17	105,107,115,120	0
3	EDO	A	1105	4/4	0.83	0.19	80,81,84,94	0
3	EDO	A	1104	4/4	0.85	0.33	100,103,104,108	0
3	EDO	A	1102	4/4	0.87	0.30	82,83,86,87	0
2	IKC	A	1101	36/36	0.87	0.24	71,98,115,117	0
3	EDO	A	1103	4/4	0.89	0.27	72,73,73,75	0

The following is a graphical depiction of the model fit to experimental electron density of all instances of the Ligand of Interest. In addition, ligands with molecular weight > 250 and outliers as shown on the geometry validation Tables will also be included. Each fit is shown from different orientation to approximate a three-dimensional view.



## 6.5 Other polymers [i](#)

There are no such residues in this entry.