



wwPDB X-ray Structure Validation Summary Report ⓘ

Jul 11, 2023 – 04:25 pm BST

PDB ID : 7ZC9
Title : Human Pikachurin/EGFLAM C-terminal Laminin-G domain (LG3)
Authors : Pantalone, S.; Forneris, F.
Deposited on : 2022-03-26
Resolution : 2.10 Å(reported)

This is a wwPDB X-ray Structure Validation Summary Report for a publicly released PDB entry.

We welcome your comments at validation@mail.wwpdb.org

A user guide is available at

<https://www.wwpdb.org/validation/2017/XrayValidationReportHelp>

with specific help available everywhere you see the ⓘ symbol.

The types of validation reports are described at

<http://www.wwpdb.org/validation/2017/FAQs#types>.

The following versions of software and data (see [references ⓘ](#)) were used in the production of this report:

MolProbity : 4.02b-467
Mogul : 1.8.4, CSD as541be (2020)
Xtriage (Phenix) : 1.13
EDS : 2.34
Percentile statistics : 20191225.v01 (using entries in the PDB archive December 25th 2019)
Refmac : 5.8.0158
CCP4 : 7.0.044 (Gargrove)
Ideal geometry (proteins) : Engh & Huber (2001)
Ideal geometry (DNA, RNA) : Parkinson et al. (1996)
Validation Pipeline (wwPDB-VP) : 2.34

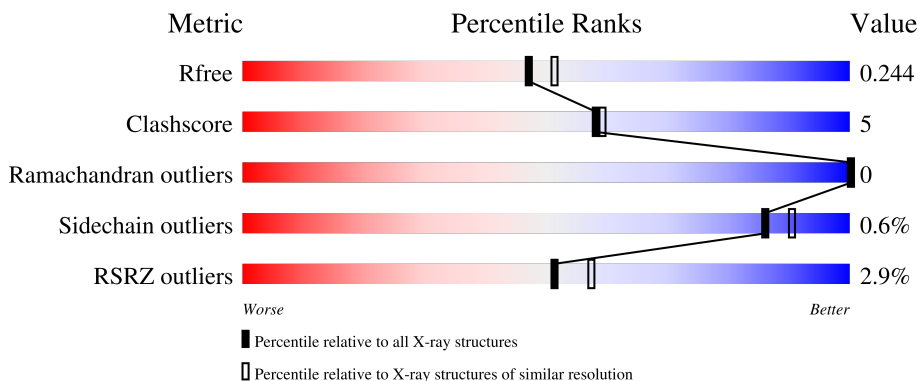
1 Overall quality at a glance

The following experimental techniques were used to determine the structure:

X-RAY DIFFRACTION

The reported resolution of this entry is 2.10 Å.

Percentile scores (ranging between 0-100) for global validation metrics of the entry are shown in the following graphic. The table shows the number of entries on which the scores are based.



Metric	Whole archive (#Entries)	Similar resolution (#Entries, resolution range(Å))
R_{free}	130704	5197 (2.10-2.10)
Clashscore	141614	5710 (2.10-2.10)
Ramachandran outliers	138981	5647 (2.10-2.10)
Sidechain outliers	138945	5648 (2.10-2.10)
RSRZ outliers	127900	5083 (2.10-2.10)

The table below summarises the geometric issues observed across the polymeric chains and their fit to the electron density. The red, orange, yellow and green segments of the lower bar indicate the fraction of residues that contain outliers for ≥ 3 , 2, 1 and 0 types of geometric quality criteria respectively. A grey segment represents the fraction of residues that are not modelled. The numeric value for each fraction is indicated below the corresponding segment, with a dot representing fractions $\leq 5\%$. The upper red bar (where present) indicates the fraction of residues that have poor fit to the electron density. The numeric value is given above the bar.

Mol	Chain	Length	Quality of chain
1	A	201	 4% 84% 10% 6%
1	B	201	 % 84% 10% 6%

The following table lists non-polymeric compounds, carbohydrate monomers and non-standard residues in protein, DNA, RNA chains that are outliers for geometric or electron-density-fit criteria:

Mol	Type	Chain	Res	Chirality	Geometry	Clashes	Electron density
2	NAG	B	1101	-	-	-	X
3	SO4	B	1105	-	-	X	-

2 Entry composition [i](#)

There are 4 unique types of molecules in this entry. The entry contains 3225 atoms, of which 0 are hydrogens and 0 are deuteriums.

In the tables below, the ZeroOcc column contains the number of atoms modelled with zero occupancy, the AltConf column contains the number of residues with at least one atom in alternate conformation and the Trace column contains the number of residues modelled with at most 2 atoms.

- Molecule 1 is a protein called Pikachurin.

Mol	Chain	Residues	Atoms					ZeroOcc	AltConf	Trace
			Total	C	N	O	S			
1	B	189	1484	930	269	276	9	0	5	0
1	A	189	1499	943	268	279	9	5	9	0

There are 44 discrepancies between the modelled and reference sequences:

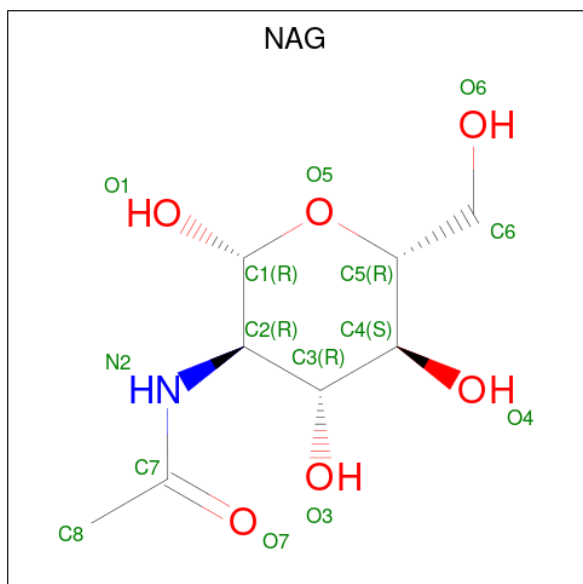
Chain	Residue	Modelled	Actual	Comment	Reference
B	820	GLY	GLN	conflict	UNP Q63HQ2
B	821	SER	LYS	conflict	UNP Q63HQ2
B	822	HIS	GLU	conflict	UNP Q63HQ2
B	823	HIS	CYS	conflict	UNP Q63HQ2
B	824	HIS	GLY	conflict	UNP Q63HQ2
B	825	HIS	ASN	conflict	UNP Q63HQ2
B	826	HIS	TYR	conflict	UNP Q63HQ2
B	827	HIS	CYS	conflict	UNP Q63HQ2
B	828	GLY	LEU	conflict	UNP Q63HQ2
B	829	SER	ASN	conflict	UNP Q63HQ2
B	830	ALA	THR	conflict	UNP Q63HQ2
B	1010	ASN	-	expression tag	UNP Q63HQ2
B	1011	ILE	-	expression tag	UNP Q63HQ2
B	1012	ASN	-	expression tag	UNP Q63HQ2
B	1013	THR	-	expression tag	UNP Q63HQ2
B	1014	CYS	-	expression tag	UNP Q63HQ2
B	1015	GLY	-	expression tag	UNP Q63HQ2
B	1016	ALA	-	expression tag	UNP Q63HQ2
B	1017	LYS	-	expression tag	UNP Q63HQ2
B	1018	ALA	-	expression tag	UNP Q63HQ2
B	1019	ALA	-	expression tag	UNP Q63HQ2
B	1020	ALA	-	expression tag	UNP Q63HQ2
A	820	GLY	GLN	conflict	UNP Q63HQ2
A	821	SER	LYS	conflict	UNP Q63HQ2
A	822	HIS	GLU	conflict	UNP Q63HQ2

Continued on next page...

Continued from previous page...

Chain	Residue	Modelled	Actual	Comment	Reference
A	823	HIS	CYS	conflict	UNP Q63HQ2
A	824	HIS	GLY	conflict	UNP Q63HQ2
A	825	HIS	ASN	conflict	UNP Q63HQ2
A	826	HIS	TYR	conflict	UNP Q63HQ2
A	827	HIS	CYS	conflict	UNP Q63HQ2
A	828	GLY	LEU	conflict	UNP Q63HQ2
A	829	SER	ASN	conflict	UNP Q63HQ2
A	830	ALA	THR	conflict	UNP Q63HQ2
A	1010	ASN	-	expression tag	UNP Q63HQ2
A	1011	ILE	-	expression tag	UNP Q63HQ2
A	1012	ASN	-	expression tag	UNP Q63HQ2
A	1013	THR	-	expression tag	UNP Q63HQ2
A	1014	CYS	-	expression tag	UNP Q63HQ2
A	1015	GLY	-	expression tag	UNP Q63HQ2
A	1016	ALA	-	expression tag	UNP Q63HQ2
A	1017	LYS	-	expression tag	UNP Q63HQ2
A	1018	ALA	-	expression tag	UNP Q63HQ2
A	1019	ALA	-	expression tag	UNP Q63HQ2
A	1020	ALA	-	expression tag	UNP Q63HQ2

- Molecule 2 is 2-acetamido-2-deoxy-beta-D-glucopyranose (three-letter code: NAG) (formula: $C_8H_{15}NO_6$).



Mol	Chain	Residues	Atoms			ZeroOcc	AltConf	
			Total	C	N			O
2	B	1	14	8	1	5	0	0

- Molecule 3 is SULFATE ION (three-letter code: SO4) (formula: O₄S).



Mol	Chain	Residues	Atoms			ZeroOcc	AltConf
3	B	1	Total	O	S	0	0
			5	4	1		
3	B	1	Total	O	S	0	0
			5	4	1		
3	B	1	Total	O	S	0	0
			5	4	1		
3	B	1	Total	O	S	0	0
			5	4	1		
3	B	1	Total	O	S	0	0
			5	4	1		
3	B	1	Total	O	S	0	0
			5	4	1		
3	B	1	Total	O	S	0	0
			5	4	1		
3	A	1	Total	O	S	0	0
			5	4	1		
3	A	1	Total	O	S	0	0
			5	4	1		
3	A	1	Total	O	S	0	0
			5	4	1		

Continued on next page...

Continued from previous page...

Mol	Chain	Residues	Atoms			ZeroOcc	AltConf
3	A	1	Total	O	S	0	0
			5	4	1		
3	A	1	Total	O	S	0	0
			5	4	1		
3	A	1	Total	O	S	0	0
			5	4	1		
3	A	1	Total	O	S	0	0
			5	4	1		
3	A	1	Total	O	S	0	0
			5	4	1		

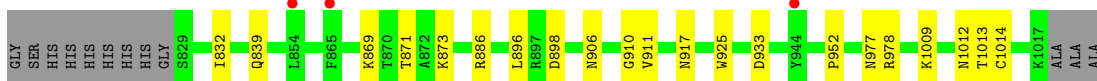
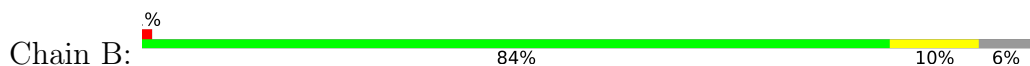
- Molecule 4 is water.

Mol	Chain	Residues	Atoms		ZeroOcc	AltConf
4	B	80	Total	O	0	0
			80	80		
4	A	58	Total	O	0	0
			58	58		

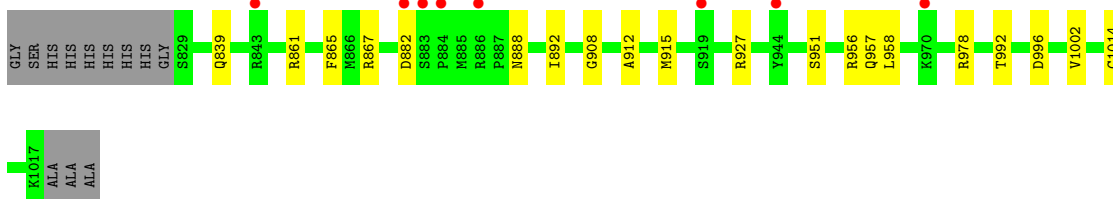
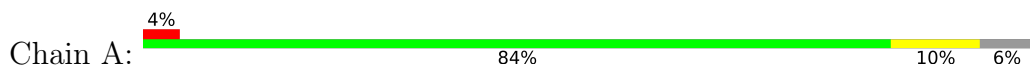
3 Residue-property plots [i](#)

These plots are drawn for all protein, RNA, DNA and oligosaccharide chains in the entry. The first graphic for a chain summarises the proportions of the various outlier classes displayed in the second graphic. The second graphic shows the sequence view annotated by issues in geometry and electron density. Residues are color-coded according to the number of geometric quality criteria for which they contain at least one outlier: green = 0, yellow = 1, orange = 2 and red = 3 or more. A red dot above a residue indicates a poor fit to the electron density ($RSRZ > 2$). Stretches of 2 or more consecutive residues without any outlier are shown as a green connector. Residues present in the sample, but not in the model, are shown in grey.

- Molecule 1: Pikachurin



- Molecule 1: Pikachurin



4 Data and refinement statistics

Property	Value	Source
Space group	C 2 2 21	Depositor
Cell constants a, b, c, α , β , γ	73.81Å 103.82Å 133.53Å 90.00° 90.00° 90.00°	Depositor
Resolution (Å)	48.38 – 2.10 48.38 – 2.10	Depositor EDS
% Data completeness (in resolution range)	99.9 (48.38-2.10) 99.9 (48.38-2.10)	Depositor EDS
R_{merge}	0.10	Depositor
R_{sym}	(Not available)	Depositor
$\langle I/\sigma(I) \rangle$ ¹	1.96 (at 2.10Å)	Xtrriage
Refinement program	PHENIX 1.20_4459	Depositor
R, R_{free}	0.207 , 0.246 0.206 , 0.244	Depositor DCC
R_{free} test set	1492 reflections (4.93%)	wwPDB-VP
Wilson B-factor (Å ²)	39.9	Xtrriage
Anisotropy	0.479	Xtrriage
Bulk solvent k_{sol} (e/Å ³), B_{sol} (Å ²)	0.36 , 47.6	EDS
L-test for twinning ²	$\langle L \rangle = 0.49$, $\langle L^2 \rangle = 0.32$	Xtrriage
Estimated twinning fraction	No twinning to report.	Xtrriage
F_o, F_c correlation	0.95	EDS
Total number of atoms	3225	wwPDB-VP
Average B, all atoms (Å ²)	50.0	wwPDB-VP

Xtrriage's analysis on translational NCS is as follows: *The largest off-origin peak in the Patterson function is 6.02% of the height of the origin peak. No significant pseudotranslation is detected.*

¹Intensities estimated from amplitudes.

²Theoretical values of $\langle |L| \rangle$, $\langle L^2 \rangle$ for acentric reflections are 0.5, 0.333 respectively for untwinned datasets, and 0.375, 0.2 for perfectly twinned datasets.

5 Model quality

5.1 Standard geometry

Bond lengths and bond angles in the following residue types are not validated in this section: SO4, NAG

The Z score for a bond length (or angle) is the number of standard deviations the observed value is removed from the expected value. A bond length (or angle) with $|Z| > 5$ is considered an outlier worth inspection. RMSZ is the root-mean-square of all Z scores of the bond lengths (or angles).

Mol	Chain	Bond lengths		Bond angles	
		RMSZ	# Z >5	RMSZ	# Z >5
1	A	0.27	0/1552	0.58	0/2091
1	B	0.27	0/1522	0.58	0/2050
All	All	0.27	0/3074	0.58	0/4141

There are no bond length outliers.

There are no bond angle outliers.

There are no chirality outliers.

There are no planarity outliers.

5.2 Too-close contacts

In the following table, the Non-H and H(model) columns list the number of non-hydrogen atoms and hydrogen atoms in the chain respectively. The H(added) column lists the number of hydrogen atoms added and optimized by MolProbity. The Clashes column lists the number of clashes within the asymmetric unit, whereas Symm-Clashes lists symmetry-related clashes.

Mol	Chain	Non-H	H(model)	H(added)	Clashes	Symm-Clashes
1	A	1499	0	1516	13	0
1	B	1484	0	1488	17	0
2	B	14	0	13	0	0
3	A	40	0	0	0	0
3	B	50	0	0	4	0
4	A	58	0	0	3	0
4	B	80	0	0	7	0
All	All	3225	0	3017	29	0

The all-atom clashscore is defined as the number of clashes found per 1000 atoms (including hydrogen atoms). The all-atom clashscore for this structure is 5.

The worst 5 of 29 close contacts within the same asymmetric unit are listed below, sorted by their clash magnitude.

Atom-1	Atom-2	Interatomic distance (Å)	Clash overlap (Å)
1:A:882:ASP:OD2	4:A:1201:HOH:O	1.90	0.90
3:B:1105:SO4:O3	4:B:1201:HOH:O	1.92	0.88
3:B:1107:SO4:O3	4:B:1202:HOH:O	1.96	0.82
1:B:896:LEU:O	4:B:1203:HOH:O	2.00	0.79
1:B:871:THR:OG1	4:B:1204:HOH:O	2.05	0.75

There are no symmetry-related clashes.

5.3 Torsion angles [i](#)

5.3.1 Protein backbone [i](#)

In the following table, the Percentiles column shows the percent Ramachandran outliers of the chain as a percentile score with respect to all X-ray entries followed by that with respect to entries of similar resolution.

The Analysed column shows the number of residues for which the backbone conformation was analysed, and the total number of residues.

Mol	Chain	Analysed	Favoured	Allowed	Outliers	Percentiles	
1	A	196/201 (98%)	193 (98%)	3 (2%)	0	100	100
1	B	192/201 (96%)	186 (97%)	6 (3%)	0	100	100
All	All	388/402 (96%)	379 (98%)	9 (2%)	0	100	100

There are no Ramachandran outliers to report.

5.3.2 Protein sidechains [i](#)

In the following table, the Percentiles column shows the percent sidechain outliers of the chain as a percentile score with respect to all X-ray entries followed by that with respect to entries of similar resolution.

The Analysed column shows the number of residues for which the sidechain conformation was analysed, and the total number of residues.

Mol	Chain	Analysed	Rotameric	Outliers	Percentiles	
1	A	165/163 (101%)	163 (99%)	2 (1%)	71	77

Continued on next page...

Continued from previous page...

Mol	Chain	Analysed	Rotameric	Outliers	Percentiles	
1	B	161/163 (99%)	161 (100%)	0	100	100
All	All	326/326 (100%)	324 (99%)	2 (1%)	86	90

All (2) residues with a non-rotameric sidechain are listed below:

Mol	Chain	Res	Type
1	A	956	ARG
1	A	957	GLN

Sometimes sidechains can be flipped to improve hydrogen bonding and reduce clashes. There are no such sidechains identified.

5.3.3 RNA [i](#)

There are no RNA molecules in this entry.

5.4 Non-standard residues in protein, DNA, RNA chains [i](#)

There are no non-standard protein/DNA/RNA residues in this entry.

5.5 Carbohydrates [i](#)

There are no monosaccharides in this entry.

5.6 Ligand geometry [i](#)

19 ligands are modelled in this entry.

In the following table, the Counts columns list the number of bonds (or angles) for which Mogul statistics could be retrieved, the number of bonds (or angles) that are observed in the model and the number of bonds (or angles) that are defined in the Chemical Component Dictionary. The Link column lists molecule types, if any, to which the group is linked. The Z score for a bond length (or angle) is the number of standard deviations the observed value is removed from the expected value. A bond length (or angle) with $|Z| > 2$ is considered an outlier worth inspection. RMSZ is the root-mean-square of all Z scores of the bond lengths (or angles).

Mol	Type	Chain	Res	Link	Bond lengths			Bond angles		
					Counts	RMSZ	$\# Z > 2$	Counts	RMSZ	$\# Z > 2$
3	SO4	B	1105	-	4,4,4	0.17	0	6,6,6	0.31	0
3	SO4	A	1105	-	4,4,4	0.14	0	6,6,6	0.06	0

Mol	Type	Chain	Res	Link	Bond lengths			Bond angles		
					Counts	RMSZ	# Z > 2	Counts	RMSZ	# Z > 2
3	SO4	B	1111	-	4,4,4	0.13	0	6,6,6	0.07	0
2	NAG	B	1101	1	14,14,15	0.18	0	17,19,21	0.37	0
3	SO4	B	1108	-	4,4,4	0.15	0	6,6,6	0.05	0
3	SO4	A	1101	-	4,4,4	0.16	0	6,6,6	0.11	0
3	SO4	A	1106	-	4,4,4	0.15	0	6,6,6	0.08	0
3	SO4	B	1106	-	4,4,4	0.14	0	6,6,6	0.05	0
3	SO4	A	1104	-	4,4,4	0.17	0	6,6,6	0.08	0
3	SO4	B	1110	-	4,4,4	0.14	0	6,6,6	0.07	0
3	SO4	A	1103	-	4,4,4	0.14	0	6,6,6	0.08	0
3	SO4	A	1102	-	4,4,4	0.15	0	6,6,6	0.08	0
3	SO4	B	1104	-	4,4,4	0.12	0	6,6,6	0.14	0
3	SO4	B	1109	-	4,4,4	0.14	0	6,6,6	0.10	0
3	SO4	B	1103	-	4,4,4	0.14	0	6,6,6	0.07	0
3	SO4	A	1107	-	4,4,4	0.15	0	6,6,6	0.05	0
3	SO4	B	1107	-	4,4,4	0.13	0	6,6,6	0.07	0
3	SO4	A	1108	-	4,4,4	0.14	0	6,6,6	0.05	0
3	SO4	B	1102	-	4,4,4	0.13	0	6,6,6	0.08	0

In the following table, the Chirals column lists the number of chiral outliers, the number of chiral centers analysed, the number of these observed in the model and the number defined in the Chemical Component Dictionary. Similar counts are reported in the Torsion and Rings columns. '-' means no outliers of that kind were identified.

Mol	Type	Chain	Res	Link	Chirals	Torsions	Rings
2	NAG	B	1101	1	-	2/6/23/26	0/1/1/1

There are no bond length outliers.

There are no bond angle outliers.

There are no chirality outliers.

All (2) torsion outliers are listed below:

Mol	Chain	Res	Type	Atoms
2	B	1101	NAG	C4-C5-C6-O6
2	B	1101	NAG	O5-C5-C6-O6

There are no ring outliers.

2 monomers are involved in 4 short contacts:

Mol	Chain	Res	Type	Clashes	Symm-Clashes
3	B	1105	SO4	3	0

Continued on next page...

Continued from previous page...

Mol	Chain	Res	Type	Clashes	Symm-Clashes
3	B	1107	SO4	1	0

5.7 Other polymers [i](#)

There are no such residues in this entry.

5.8 Polymer linkage issues [i](#)

There are no chain breaks in this entry.

6 Fit of model and data [i](#)

6.1 Protein, DNA and RNA chains [i](#)

In the following table, the column labelled ‘#RSRZ> 2’ contains the number (and percentage) of RSRZ outliers, followed by percent RSRZ outliers for the chain as percentile scores relative to all X-ray entries and entries of similar resolution. The OWAB column contains the minimum, median, 95th percentile and maximum values of the occupancy-weighted average B-factor per residue. The column labelled ‘Q< 0.9’ lists the number of (and percentage) of residues with an average occupancy less than 0.9.

Mol	Chain	Analysed	<RSRZ>	#RSRZ>2	OWAB(Å ²)	Q<0.9
1	A	189/201 (94%)	0.27	8 (4%) 36 42	36, 48, 75, 97	0
1	B	189/201 (94%)	0.30	3 (1%) 72 75	34, 44, 65, 82	0
All	All	378/402 (94%)	0.29	11 (2%) 51 57	34, 46, 71, 97	0

The worst 5 of 11 RSRZ outliers are listed below:

Mol	Chain	Res	Type	RSRZ
1	A	884	PRO	4.4
1	A	944	TYR	2.9
1	A	883	SER	2.8
1	A	919	SER	2.8
1	A	843[A]	ARG	2.7

6.2 Non-standard residues in protein, DNA, RNA chains [i](#)

There are no non-standard protein/DNA/RNA residues in this entry.

6.3 Carbohydrates [i](#)

There are no monosaccharides in this entry.

6.4 Ligands [i](#)

In the following table, the Atoms column lists the number of modelled atoms in the group and the number defined in the chemical component dictionary. The B-factors column lists the minimum, median, 95th percentile and maximum values of B factors of atoms in the group. The column labelled ‘Q< 0.9’ lists the number of atoms with occupancy less than 0.9.

Mol	Type	Chain	Res	Atoms	RSCC	RSR	B-factors(\AA^2)	Q<0.9
2	NAG	B	1101	14/15	0.79	0.45	63,82,89,91	0
3	SO4	B	1104	5/5	0.79	0.17	55,60,82,94	0
3	SO4	A	1108	5/5	0.83	0.32	83,85,103,105	0
3	SO4	B	1111	5/5	0.84	0.21	80,87,99,107	0
3	SO4	A	1107	5/5	0.86	0.27	80,90,94,104	0
3	SO4	B	1110	5/5	0.86	0.39	89,97,109,111	0
3	SO4	B	1109	5/5	0.90	0.24	60,62,81,85	0
3	SO4	B	1105	5/5	0.91	0.24	59,65,80,82	0
3	SO4	B	1107	5/5	0.93	0.14	64,67,84,88	0
3	SO4	A	1104	5/5	0.94	0.14	64,69,74,81	0
3	SO4	B	1103	5/5	0.94	0.10	67,87,92,96	0
3	SO4	B	1106	5/5	0.94	0.12	79,88,101,102	0
3	SO4	B	1102	5/5	0.95	0.29	63,72,77,81	0
3	SO4	A	1105	5/5	0.96	0.22	77,81,93,106	0
3	SO4	A	1101	5/5	0.96	0.10	58,59,73,75	0
3	SO4	B	1108	5/5	0.96	0.11	66,68,89,94	0
3	SO4	A	1102	5/5	0.97	0.16	67,76,79,84	0
3	SO4	A	1103	5/5	0.97	0.10	56,61,65,80	0
3	SO4	A	1106	5/5	0.98	0.12	46,49,58,61	0

6.5 Other polymers [i](#)

There are no such residues in this entry.