



Full wwPDB X-ray Structure Validation Report ⓘ

May 13, 2020 – 08:53 am BST

PDB ID : 3ZEU
Title : Structure of a Salmonella typhimurium YgjD-YeaZ heterodimer bound to ATPgammaS
Authors : Nichols, C.E.; Lamb, H.K.; Thompson, P.; El Omari, K.; Lockyer, M.; Charles, I.; Hawkins, A.R.; Stammers, D.K.
Deposited on : 2012-12-07
Resolution : 1.65 Å(reported)

This is a Full wwPDB X-ray Structure Validation Report for a publicly released PDB entry.

We welcome your comments at validation@mail.wwpdb.org

A user guide is available at

<https://www.wwpdb.org/validation/2017/XrayValidationReportHelp>

with specific help available everywhere you see the ⓘ symbol.

The following versions of software and data (see [references ⓘ](#)) were used in the production of this report:

MolProbity : 4.02b-467
Mogul : 1.8.5 (274361), CSD as541be (2020)
Xtriage (Phenix) : 1.13
EDS : 2.11
buster-report : 1.1.7 (2018)
Percentile statistics : 20191225.v01 (using entries in the PDB archive December 25th 2019)
Refmac : 5.8.0158
CCP4 : 7.0.044 (Gargrove)
Ideal geometry (proteins) : Engh & Huber (2001)
Ideal geometry (DNA, RNA) : Parkinson et al. (1996)
Validation Pipeline (wwPDB-VP) : 2.11

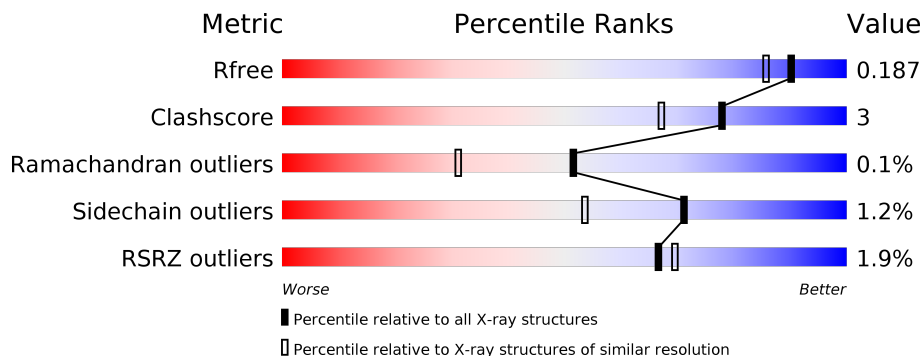
1 Overall quality at a glance

The following experimental techniques were used to determine the structure:

X-RAY DIFFRACTION

The reported resolution of this entry is 1.65 Å.

Percentile scores (ranging between 0-100) for global validation metrics of the entry are shown in the following graphic. The table shows the number of entries on which the scores are based.



Metric	Whole archive (#Entries)	Similar resolution (#Entries, resolution range(Å))
R_{free}	130704	1827 (1.66-1.66)
Clashscore	141614	1931 (1.66-1.66)
Ramachandran outliers	138981	1891 (1.66-1.66)
Sidechain outliers	138945	1891 (1.66-1.66)
RSRZ outliers	127900	1791 (1.66-1.66)

The table below summarises the geometric issues observed across the polymeric chains and their fit to the electron density. The red, orange, yellow and green segments on the lower bar indicate the fraction of residues that contain outliers for ≥ 3 , 2, 1 and 0 types of geometric quality criteria respectively. A grey segment represents the fraction of residues that are not modelled. The numeric value for each fraction is indicated below the corresponding segment, with a dot representing fractions $\leq 5\%$. The upper red bar (where present) indicates the fraction of residues that have poor fit to the electron density. The numeric value is given above the bar.

Mol	Chain	Length	Quality of chain
1	A	236	 3% 90% 10%
1	D	236	 2% 89% 10%
2	B	337	 % 93% 6%
2	E	337	 % 93% 6%

The following table lists non-polymeric compounds, carbohydrate monomers and non-standard residues in protein, DNA, RNA chains that are outliers for geometric or electron-density-fit crite-

ria:

Mol	Type	Chain	Res	Chirality	Geometry	Clashes	Electron density
3	CL	A	1231	-	-	X	-

2 Entry composition i

There are 8 unique types of molecules in this entry. The entry contains 9769 atoms, of which 0 are hydrogens and 0 are deuteriums.

In the tables below, the ZeroOcc column contains the number of atoms modelled with zero occupancy, the AltConf column contains the number of residues with at least one atom in alternate conformation and the Trace column contains the number of residues modelled with at most 2 atoms.

- Molecule 1 is a protein called PUTATIVE M22 PEPTIDASE YEAZ.

Mol	Chain	Residues	Atoms					ZeroOcc	AltConf	Trace	
			Total	C	N	O	S				Se
1	A	230	1818	1156	310	331	14	7	0	12	0
1	D	230	1840	1164	319	337	13	7	0	16	0

There are 12 discrepancies between the modelled and reference sequences:

Chain	Residue	Modelled	Actual	Comment	Reference
A	1	MET	MSE	microheterogeneity	UNP E8X8J1
A	41	MET	MSE	microheterogeneity	UNP E8X8J1
A	89	MET	MSE	microheterogeneity	UNP E8X8J1
A	98	MET	MSE	microheterogeneity	UNP E8X8J1
A	119	MET	MSE	microheterogeneity	UNP E8X8J1
A	194	MET	MSE	microheterogeneity	UNP E8X8J1
D	1	MET	MSE	microheterogeneity	UNP E8X8J1
D	41	MET	MSE	microheterogeneity	UNP E8X8J1
D	89	MET	MSE	microheterogeneity	UNP E8X8J1
D	98	MET	MSE	microheterogeneity	UNP E8X8J1
D	119	MET	MSE	microheterogeneity	UNP E8X8J1
D	194	MET	MSE	microheterogeneity	UNP E8X8J1

- Molecule 2 is a protein called PROBABLE TRNA THREONYLCARBAMOYLADENOSINE BIOSYNTHESIS PROTEIN GCP.

Mol	Chain	Residues	Atoms					ZeroOcc	AltConf	Trace
			Total	C	N	O	S			
2	B	337	2554	1623	439	473	19	0	7	0
2	E	337	2569	1629	443	478	19	0	9	0

- Molecule 3 is CHLORIDE ION (three-letter code: CL) (formula: Cl).

Mol	Chain	Residues	Atoms	ZeroOcc	AltConf
3	B	2	Total Cl 2 2	0	0
3	A	1	Total Cl 1 1	0	0
3	E	1	Total Cl 1 1	0	0

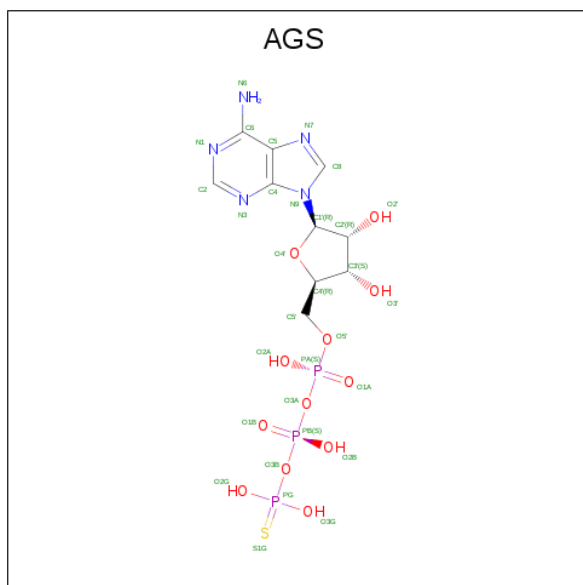
- Molecule 4 is ZINC ION (three-letter code: ZN) (formula: Zn).

Mol	Chain	Residues	Atoms	ZeroOcc	AltConf
4	B	1	Total Zn 1 1	0	0
4	E	1	Total Zn 1 1	0	0

- Molecule 5 is MAGNESIUM ION (three-letter code: MG) (formula: Mg).

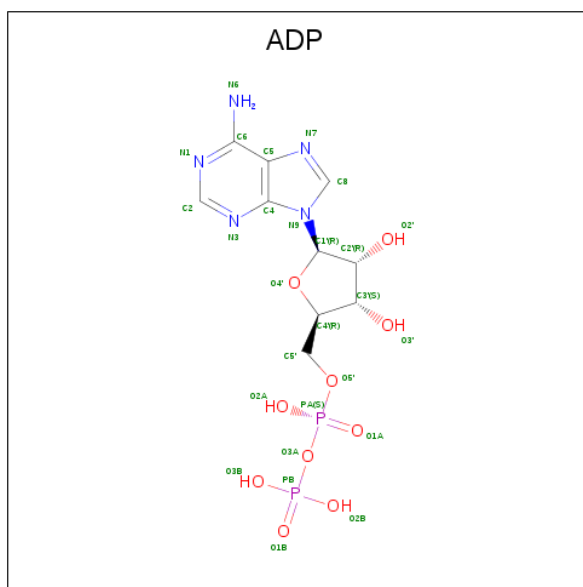
Mol	Chain	Residues	Atoms	ZeroOcc	AltConf
5	B	2	Total Mg 2 2	0	0
5	E	2	Total Mg 2 2	0	0

- Molecule 6 is PHOSPHOTHIOPHOSPHORIC ACID-ADENYLATE ESTER (three-letter code: AGS) (formula: C₁₀H₁₆N₅O₁₂P₃S).



Mol	Chain	Residues	Atoms					ZeroOcc	AltConf	
6	B	1	Total	C	N	O	P	S	0	1
			31	10	5	12	3	1		
6	E	1	Total	C	N	O	P	S	0	1
			31	10	5	12	3	1		

- Molecule 7 is ADENOSINE-5'-DIPHOSPHATE (three-letter code: ADP) (formula: $C_{10}H_{15}N_5O_{10}P_2$).



Mol	Chain	Residues	Atoms					ZeroOcc	AltConf
7	B	1	Total	C	N	O	P	0	1
			27	10	5	10	2		
7	E	1	Total	C	N	O	P	0	1
			27	10	5	10	2		

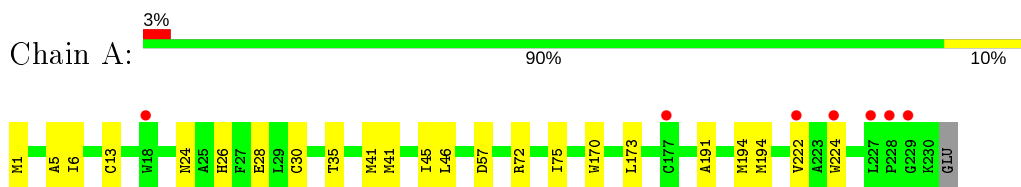
- Molecule 8 is water.

Mol	Chain	Residues	Atoms		ZeroOcc	AltConf
8	A	185	Total	O	0	0
			185	185		
8	B	265	Total	O	0	0
			265	265		
8	D	162	Total	O	0	0
			162	162		
8	E	250	Total	O	0	0
			250	250		

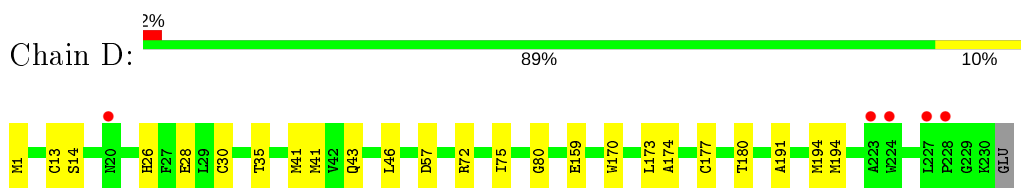
3 Residue-property plots [i](#)

These plots are drawn for all protein, RNA and DNA chains in the entry. The first graphic for a chain summarises the proportions of the various outlier classes displayed in the second graphic. The second graphic shows the sequence view annotated by issues in geometry and electron density. Residues are color-coded according to the number of geometric quality criteria for which they contain at least one outlier: green = 0, yellow = 1, orange = 2 and red = 3 or more. A red dot above a residue indicates a poor fit to the electron density ($RSRZ > 2$). Stretches of 2 or more consecutive residues without any outlier are shown as a green connector. Residues present in the sample, but not in the model, are shown in grey.

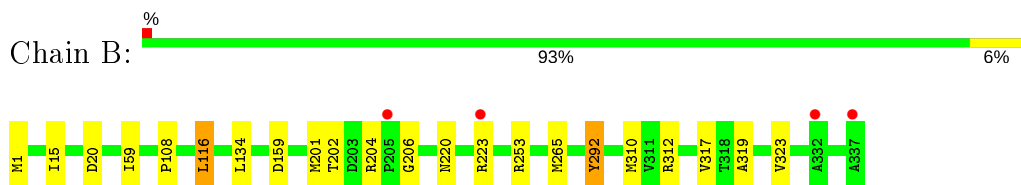
- Molecule 1: PUTATIVE M22 PEPTIDASE YEAZ



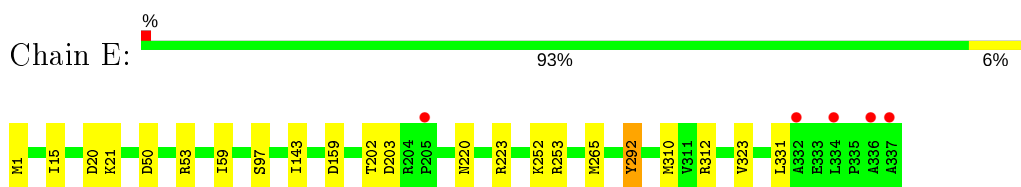
- Molecule 1: PUTATIVE M22 PEPTIDASE YEAZ



- Molecule 2: PROBABLE TRNA THREONYLCARBAMOYLADENOSINE BIOSYNTHESIS PROTEIN GCP



- Molecule 2: PROBABLE TRNA THREONYLCARBAMOYLADENOSINE BIOSYNTHESIS PROTEIN GCP



4 Data and refinement statistics

Property	Value	Source
Space group	P 1	Depositor
Cell constants a, b, c, α , β , γ	61.21Å 68.08Å 87.62Å 107.66° 92.63° 116.45°	Depositor
Resolution (Å)	29.09 – 1.65 42.62 – 1.65	Depositor EDS
% Data completeness (in resolution range)	95.9 (29.09-1.65) 95.9 (42.62-1.65)	Depositor EDS
R_{merge}	0.07	Depositor
R_{sym}	(Not available)	Depositor
$\langle I/\sigma(I) \rangle$ ¹	1.98 (at 1.65Å)	Xtrriage
Refinement program	PHENIX (PHENIX.REFINE: 1.8_1069)	Depositor
R, R_{free}	0.159 , 0.186 0.160 , 0.187	Depositor DCC
R_{free} test set	6813 reflections (5.03%)	wwPDB-VP
Wilson B-factor (Å ²)	14.7	Xtrriage
Anisotropy	0.107	Xtrriage
Bulk solvent k_{sol} (e/Å ³), B_{sol} (Å ²)	0.36 , 50.8	EDS
L-test for twinning ²	$\langle L \rangle = 0.50$, $\langle L^2 \rangle = 0.34$	Xtrriage
Estimated twinning fraction	0.049 for h,-h-k,-l	Xtrriage
F_o, F_c correlation	0.96	EDS
Total number of atoms	9769	wwPDB-VP
Average B, all atoms (Å ²)	19.0	wwPDB-VP

Xtrriage's analysis on translational NCS is as follows: *The largest off-origin peak in the Patterson function is 5.99% of the height of the origin peak. No significant pseudotranslation is detected.*

¹Intensities estimated from amplitudes.

²Theoretical values of $\langle |L| \rangle$, $\langle L^2 \rangle$ for acentric reflections are 0.5, 0.333 respectively for untwinned datasets, and 0.375, 0.2 for perfectly twinned datasets.

5 Model quality [i](#)

5.1 Standard geometry [i](#)

Bond lengths and bond angles in the following residue types are not validated in this section: ZN, AGS, MG, ADP, CL

The Z score for a bond length (or angle) is the number of standard deviations the observed value is removed from the expected value. A bond length (or angle) with $|Z| > 5$ is considered an outlier worth inspection. RMSZ is the root-mean-square of all Z scores of the bond lengths (or angles).

Mol	Chain	Bond lengths		Bond angles	
		RMSZ	# Z >5	RMSZ	# Z >5
1	A	0.34	0/1843	0.54	0/2486
1	D	0.34	0/1865	0.55	0/2515
2	B	0.34	0/2603	0.53	0/3525
2	E	0.35	0/2618	0.53	0/3547
All	All	0.34	0/8929	0.54	0/12073

There are no bond length outliers.

There are no bond angle outliers.

There are no chirality outliers.

There are no planarity outliers.

5.2 Too-close contacts [i](#)

In the following table, the Non-H and H(model) columns list the number of non-hydrogen atoms and hydrogen atoms in the chain respectively. The H(added) column lists the number of hydrogen atoms added and optimized by MolProbity. The Clashes column lists the number of clashes within the asymmetric unit, whereas Symm-Clashes lists symmetry related clashes.

Mol	Chain	Non-H	H(model)	H(added)	Clashes	Symm-Clashes
1	A	1818	0	1771	14	0
1	D	1840	0	1779	13	0
2	B	2554	0	2552	12	0
2	E	2569	0	2557	13	0
3	A	1	0	0	2	0
3	B	2	0	0	0	0
3	E	1	0	0	0	0
4	B	1	0	0	0	0
4	E	1	0	0	0	0

Continued on next page...

Continued from previous page...

Mol	Chain	Non-H	H(model)	H(added)	Clashes	Symm-Clashes
5	B	2	0	0	0	0
5	E	2	0	0	0	0
6	B	31	0	11	0	0
6	E	31	0	12	0	0
7	B	27	0	11	0	0
7	E	27	0	11	0	0
8	A	185	0	0	2	0
8	B	265	0	0	0	0
8	D	162	0	0	0	0
8	E	250	0	0	1	0
All	All	9769	0	8704	51	0

The all-atom clashscore is defined as the number of clashes found per 1000 atoms (including hydrogen atoms). The all-atom clashscore for this structure is 3.

All (51) close contacts within the same asymmetric unit are listed below, sorted by their clash magnitude.

Atom-1	Atom-2	Interatomic distance (Å)	Clash overlap (Å)
1:A:5:ALA:HB1	1:A:194[A]:MSE:HE3	1.47	0.93
1:A:13:CYS:HB2	1:A:30[B]:CYS:SG	2.16	0.84
3:A:1231:CL:CL	8:A:2129:HOH:O	2.39	0.78
1:D:13:CYS:HB2	1:D:30[B]:CYS:SG	2.27	0.74
2:E:20:ASP:HB3	2:E:310[B]:MET:SD	2.29	0.72
2:B:20:ASP:HB3	2:B:310[B]:MET:SD	2.29	0.72
3:A:1231:CL:CL	8:A:2089:HOH:O	2.44	0.71
1:A:26:HIS:HD2	1:A:41[A]:MSE:HE3	1.55	0.71
2:B:202:THR:O	2:B:253:ARG:NH2	2.25	0.70
2:B:116:LEU:HG	2:B:134:LEU:HD21	1.74	0.69
2:E:50:ASP:OD1	2:E:53[B]:ARG:NH1	2.32	0.63
1:D:26:HIS:HD2	1:D:41[A]:MSE:HE3	1.62	0.62
1:D:159:GLU:HG2	1:D:180:THR:HB	1.84	0.58
2:E:220:ASN:OD1	2:E:223:ARG:NH1	2.38	0.57
2:B:265[A]:MET:HG3	2:B:292:TYR:HB3	1.88	0.55
1:D:26:HIS:CD2	1:D:41[A]:MSE:HE3	2.40	0.55
2:E:265[A]:MET:SD	2:E:292:TYR:HD2	2.29	0.55
1:A:26:HIS:CD2	1:A:41[A]:MSE:HE3	2.40	0.55
1:D:1[C]:MET:N	1:D:57:ASP:OD2	2.37	0.54
1:A:191:ALA:HA	1:A:194[A]:MSE:HE2	1.90	0.54
1:A:1[C]:MET:N	1:A:57:ASP:OD2	2.38	0.53
1:D:191:ALA:HA	1:D:194[B]:MSE:HG3	1.91	0.51
1:D:35:THR:HB	2:E:323:VAL:HB	1.92	0.50

Continued on next page...

Continued from previous page...

Atom-1	Atom-2	Interatomic distance (Å)	Clash overlap (Å)
1:D:28:GLU:HG3	1:D:30[A]:CYS:SG	2.51	0.50
2:B:265[A]:MET:SD	2:B:292:TYR:HD2	2.35	0.49
1:D:174:ALA:HB1	1:D:177:CYS:SG	2.53	0.48
2:B:201:MET:HA	2:B:204:ARG:HG3	1.95	0.48
1:A:28:GLU:HG3	1:A:30[A]:CYS:SG	2.53	0.48
1:A:35:THR:HB	2:B:323:VAL:HB	1.95	0.47
1:A:222:VAL:HG12	1:A:224[B]:TRP:H	1.78	0.47
1:A:6:ILE:O	1:A:194[A]:MSE:HE1	2.14	0.47
2:E:202:THR:O	2:E:253:ARG:NH2	2.48	0.47
1:A:24:ASN:O	1:A:45:ILE:HD11	2.15	0.46
1:D:72:ARG:HA	1:D:75:ILE:HG22	1.97	0.46
2:E:312:ARG:HD3	2:E:312:ARG:HA	1.81	0.46
2:B:220:ASN:OD1	2:B:223:ARG:NH1	2.49	0.45
1:D:14:SER:HA	1:D:41[A]:MSE:HE1	1.97	0.45
2:B:312:ARG:HD2	2:B:317:VAL:HG21	1.99	0.44
2:E:1[B]:MET:N	2:E:20:ASP:OD1	2.47	0.44
2:E:265[A]:MET:HG3	2:E:292:TYR:HB3	2.00	0.44
1:A:170:TRP:HB2	1:A:173:LEU:HG	1.99	0.44
2:B:15:ILE:HG21	2:B:59:ILE:HA	1.99	0.44
2:E:252:LYS:HE2	8:E:2226:HOH:O	2.20	0.42
2:B:108:PRO:HG3	2:B:319:ALA:HB2	2.02	0.42
1:A:1[B]:MET:N	1:A:1[B]:MET:SD	2.80	0.42
2:B:1[A]:MET:SD	2:B:310[A]:MET:SD	3.18	0.41
1:A:72:ARG:HA	1:A:75:ILE:HG22	2.03	0.41
1:D:80:GLY:HA3	2:E:97:SER:OG	2.20	0.41
2:E:143:ILE:HD13	2:E:331:LEU:HD23	2.01	0.41
2:E:15:ILE:HG21	2:E:59:ILE:HA	2.03	0.40
1:D:170:TRP:HB2	1:D:173:LEU:HG	2.03	0.40

There are no symmetry-related clashes.

5.3 Torsion angles [\(i\)](#)

5.3.1 Protein backbone [\(i\)](#)

In the following table, the Percentiles column shows the percent Ramachandran outliers of the chain as a percentile score with respect to all X-ray entries followed by that with respect to entries of similar resolution.

The Analysed column shows the number of residues for which the backbone conformation was analysed, and the total number of residues.

Mol	Chain	Analysed	Favoured	Allowed	Outliers	Percentiles	
1	A	230/236 (98%)	223 (97%)	7 (3%)	0	100	100
1	D	233/236 (99%)	226 (97%)	7 (3%)	0	100	100
2	B	341/337 (101%)	334 (98%)	6 (2%)	1 (0%)	41	22
2	E	343/337 (102%)	338 (98%)	5 (2%)	0	100	100
All	All	1147/1146 (100%)	1121 (98%)	25 (2%)	1 (0%)	51	31

All (1) Ramachandran outliers are listed below:

Mol	Chain	Res	Type
2	B	206	GLY

5.3.2 Protein sidechains [i](#)

In the following table, the Percentiles column shows the percent sidechain outliers of the chain as a percentile score with respect to all X-ray entries followed by that with respect to entries of similar resolution.

The Analysed column shows the number of residues for which the sidechain conformation was analysed, and the total number of residues.

Mol	Chain	Analysed	Rotameric	Outliers	Percentiles	
1	A	170/173 (98%)	169 (99%)	1 (1%)	86	76
1	D	173/173 (100%)	170 (98%)	3 (2%)	60	39
2	B	254/258 (98%)	251 (99%)	3 (1%)	71	53
2	E	256/258 (99%)	252 (98%)	4 (2%)	62	41
All	All	853/862 (99%)	842 (99%)	11 (1%)	71	50

All (11) residues with a non-rotameric sidechain are listed below:

Mol	Chain	Res	Type
1	A	46	LEU
2	B	116	LEU
2	B	159	ASP
2	B	292	TYR
1	D	43[A]	GLN
1	D	43[B]	GLN
1	D	46	LEU
2	E	21	LYS
2	E	159	ASP
2	E	203	ASP

Continued on next page...

Continued from previous page...

Mol	Chain	Res	Type
2	E	292	TYR

Some sidechains can be flipped to improve hydrogen bonding and reduce clashes. There are no such sidechains identified.

5.3.3 RNA [i](#)

There are no RNA molecules in this entry.

5.4 Non-standard residues in protein, DNA, RNA chains [i](#)

There are no non-standard protein/DNA/RNA residues in this entry.

5.5 Carbohydrates [i](#)

There are no carbohydrates in this entry.

5.6 Ligand geometry [i](#)

Of 14 ligands modelled in this entry, 10 are monoatomic - leaving 4 for Mogul analysis.

In the following table, the Counts columns list the number of bonds (or angles) for which Mogul statistics could be retrieved, the number of bonds (or angles) that are observed in the model and the number of bonds (or angles) that are defined in the Chemical Component Dictionary. The Link column lists molecule types, if any, to which the group is linked. The Z score for a bond length (or angle) is the number of standard deviations the observed value is removed from the expected value. A bond length (or angle) with $|Z| > 2$ is considered an outlier worth inspection. RMSZ is the root-mean-square of all Z scores of the bond lengths (or angles).

Mol	Type	Chain	Res	Link	Bond lengths			Bond angles		
					Counts	RMSZ	# Z > 2	Counts	RMSZ	# Z > 2
6	AGS	E	1341[A]	4	26,33,33	1.90	6 (23%)	26,52,52	1.51	3 (11%)
7	ADP	E	1342[B]	4	24,29,29	1.63	6 (25%)	29,45,45	1.44	3 (10%)
6	AGS	B	1342[A]	4	26,33,33	1.91	6 (23%)	26,52,52	1.55	4 (15%)
7	ADP	B	1343[B]	4	24,29,29	1.65	6 (25%)	29,45,45	1.48	5 (17%)

In the following table, the Chirals column lists the number of chiral outliers, the number of chiral centers analysed, the number of these observed in the model and the number defined in the Chemical Component Dictionary. Similar counts are reported in the Torsion and Rings columns. '-' means no outliers of that kind were identified.

Mol	Type	Chain	Res	Link	Chirals	Torsions	Rings
6	AGS	E	1341[A]	4	-	2/17/38/38	0/3/3/3
7	ADP	E	1342[B]	4	-	2/12/32/32	0/3/3/3
6	AGS	B	1342[A]	4	-	1/17/38/38	0/3/3/3
7	ADP	B	1343[B]	4	-	2/12/32/32	0/3/3/3

All (24) bond length outliers are listed below:

Mol	Chain	Res	Type	Atoms	Z	Observed(Å)	Ideal(Å)
6	E	1341[A]	AGS	PG-S1G	6.10	2.03	1.90
6	B	1342[A]	AGS	PG-S1G	5.96	2.03	1.90
7	E	1342[B]	ADP	C2'-C1'	-3.97	1.47	1.53
7	B	1343[B]	ADP	C2'-C1'	-3.96	1.47	1.53
6	E	1341[A]	AGS	C2'-C1'	-3.73	1.48	1.53
6	B	1342[A]	AGS	C2'-C1'	-3.68	1.48	1.53
7	B	1343[B]	ADP	O3'-C3'	-2.91	1.36	1.43
7	E	1342[B]	ADP	O3'-C3'	-2.81	1.36	1.43
6	B	1342[A]	AGS	O3'-C3'	-2.72	1.36	1.43
7	B	1343[B]	ADP	C2'-C3'	-2.53	1.46	1.53
7	B	1343[B]	ADP	O2'-C2'	-2.50	1.37	1.43
7	E	1342[B]	ADP	C2'-C3'	-2.48	1.46	1.53
7	E	1342[B]	ADP	C6-N6	2.43	1.42	1.34
7	B	1343[B]	ADP	C6-N6	2.43	1.42	1.34
7	E	1342[B]	ADP	O2'-C2'	-2.42	1.37	1.43
6	E	1341[A]	AGS	O3'-C3'	-2.38	1.37	1.43
6	B	1342[A]	AGS	C6-N6	2.37	1.42	1.34
6	E	1341[A]	AGS	C6-N6	2.35	1.42	1.34
6	B	1342[A]	AGS	O2'-C2'	-2.34	1.37	1.43
6	E	1341[A]	AGS	O2'-C2'	-2.25	1.37	1.43
7	E	1342[B]	ADP	O4'-C1'	2.21	1.44	1.41
7	B	1343[B]	ADP	O4'-C1'	2.19	1.44	1.41
6	B	1342[A]	AGS	C2'-C3'	-2.18	1.47	1.53
6	E	1341[A]	AGS	C2'-C3'	-2.14	1.47	1.53

All (15) bond angle outliers are listed below:

Mol	Chain	Res	Type	Atoms	Z	Observed(°)	Ideal(°)
6	B	1342[A]	AGS	N3-C2-N1	-4.91	121.01	128.68
6	E	1341[A]	AGS	N3-C2-N1	-4.83	121.12	128.68
7	B	1343[B]	ADP	N3-C2-N1	-4.64	121.42	128.68
7	E	1342[B]	ADP	N3-C2-N1	-4.63	121.45	128.68
7	B	1343[B]	ADP	PA-O3A-PB	-3.11	122.16	132.83
6	E	1341[A]	AGS	O4'-C1'-C2'	-3.00	102.54	106.93

Continued on next page...

Continued from previous page...

Mol	Chain	Res	Type	Atoms	Z	Observed(°)	Ideal(°)
7	E	1342[B]	ADP	PA-O3A-PB	-2.92	122.79	132.83
6	B	1342[A]	AGS	C1'-N9-C4	-2.63	122.02	126.64
6	B	1342[A]	AGS	O4'-C1'-C2'	-2.56	103.19	106.93
7	B	1343[B]	ADP	O5'-C5'-C4'	2.40	117.26	108.99
6	B	1342[A]	AGS	C3'-C2'-C1'	2.21	104.30	100.98
6	E	1341[A]	AGS	C1'-N9-C4	-2.15	122.87	126.64
7	B	1343[B]	ADP	C4-C5-N7	-2.14	107.16	109.40
7	E	1342[B]	ADP	C4-C5-N7	-2.07	107.24	109.40
7	B	1343[B]	ADP	C1'-N9-C4	-2.01	123.11	126.64

There are no chirality outliers.

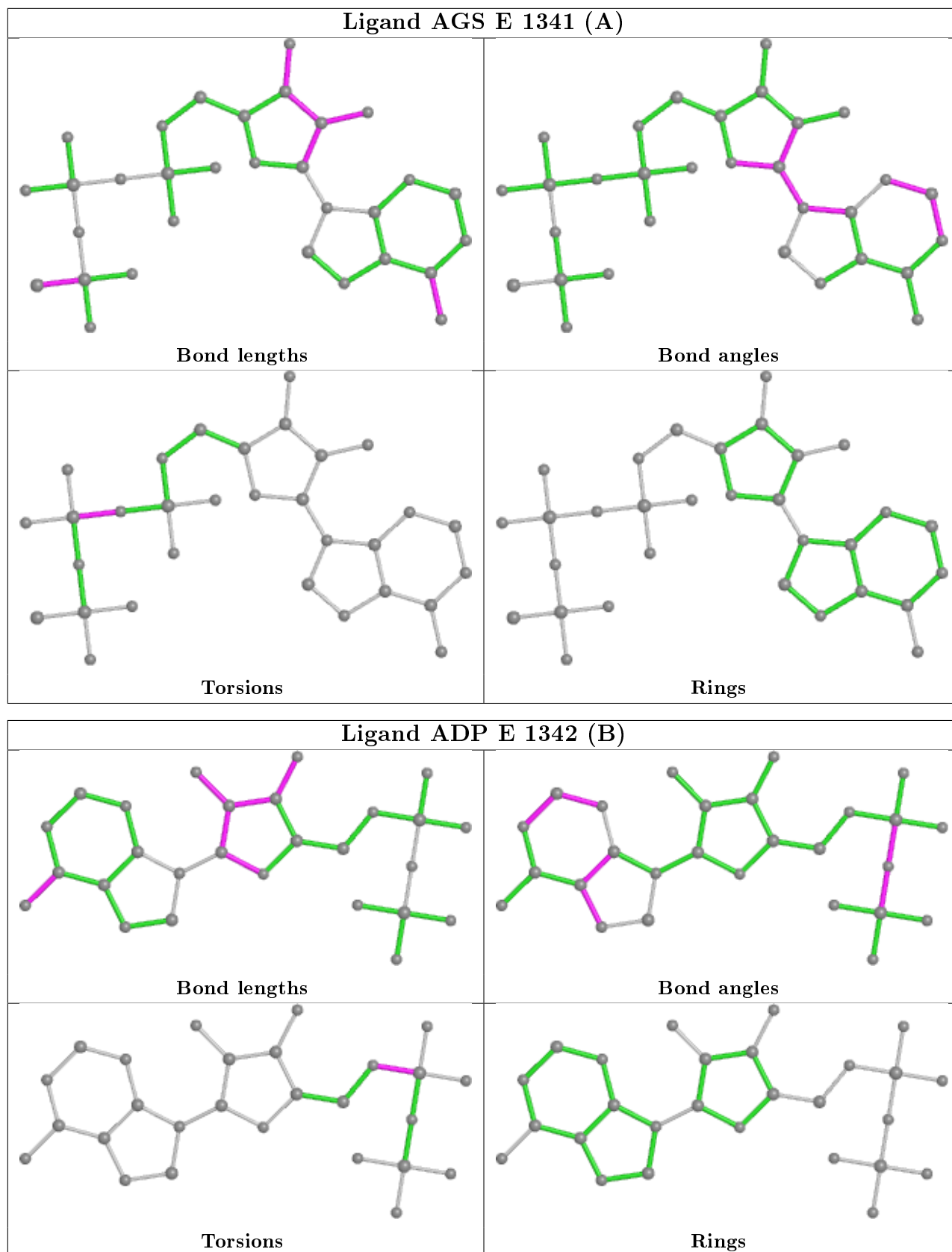
All (7) torsion outliers are listed below:

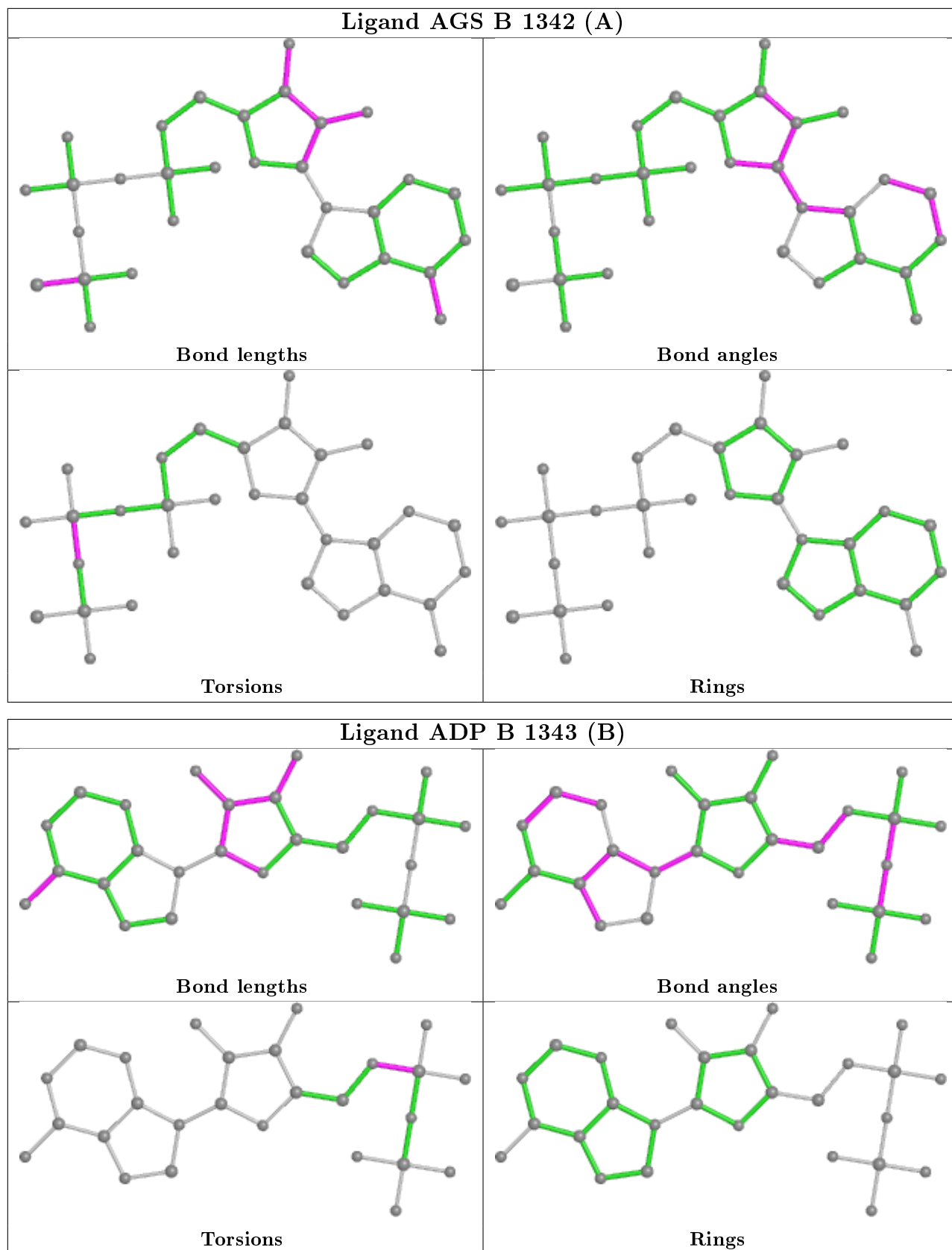
Mol	Chain	Res	Type	Atoms
7	B	1343[B]	ADP	C5'-O5'-PA-O3A
7	E	1342[B]	ADP	C5'-O5'-PA-O3A
7	B	1343[B]	ADP	C5'-O5'-PA-O2A
7	E	1342[B]	ADP	C5'-O5'-PA-O2A
6	B	1342[A]	AGS	PG-O3B-PB-O2B
6	E	1341[A]	AGS	PA-O3A-PB-O1B
6	E	1341[A]	AGS	PA-O3A-PB-O2B

There are no ring outliers.

No monomer is involved in short contacts.

The following is a two-dimensional graphical depiction of Mogul quality analysis of bond lengths, bond angles, torsion angles, and ring geometry for all instances of the Ligand of Interest. In addition, ligands with molecular weight > 250 and outliers as shown on the validation Tables will also be included. For torsion angles, if less than 5% of the Mogul distribution of torsion angles is within 10 degrees of the torsion angle in question, then that torsion angle is considered an outlier. Any bond that is central to one or more torsion angles identified as an outlier by Mogul will be highlighted in the graph. For rings, the root-mean-square deviation (RMSD) between the ring in question and similar rings identified by Mogul is calculated over all ring torsion angles. If the average RMSD is greater than 60 degrees and the minimal RMSD between the ring in question and any Mogul-identified rings is also greater than 60 degrees, then that ring is considered an outlier. The outliers are highlighted in purple. The color gray indicates Mogul did not find sufficient equivalents in the CSD to analyse the geometry.





5.7 Other polymers [i](#)

There are no such residues in this entry.

5.8 Polymer linkage issues [i](#)

There are no chain breaks in this entry.

6 Fit of model and data [i](#)

6.1 Protein, DNA and RNA chains [i](#)

In the following table, the column labelled ‘#RSRZ> 2’ contains the number (and percentage) of RSRZ outliers, followed by percent RSRZ outliers for the chain as percentile scores relative to all X-ray entries and entries of similar resolution. The OWAB column contains the minimum, median, 95th percentile and maximum values of the occupancy-weighted average B-factor per residue. The column labelled ‘Q< 0.9’ lists the number of (and percentage) of residues with an average occupancy less than 0.9.

Mol	Chain	Analysed	<RSRZ>	#RSRZ>2	OWAB(Å ²)	Q<0.9
1	A	225/236 (95%)	-0.25	7 (3%) 49 49	10, 17, 38, 46	0
1	D	225/236 (95%)	-0.26	5 (2%) 62 63	9, 17, 39, 48	0
2	B	337/337 (100%)	-0.18	4 (1%) 79 81	9, 16, 34, 51	0
2	E	337/337 (100%)	-0.23	5 (1%) 73 77	9, 15, 30, 48	0
All	All	1124/1146 (98%)	-0.23	21 (1%) 66 69	9, 16, 35, 51	0

All (21) RSRZ outliers are listed below:

Mol	Chain	Res	Type	RSRZ
2	E	332	ALA	6.9
2	B	332	ALA	5.8
1	A	224[A]	TRP	5.2
1	D	224[A]	TRP	4.5
2	E	337	ALA	4.2
1	A	229	GLY	3.9
2	B	205	PRO	3.8
1	A	228	PRO	3.1
2	B	223	ARG	2.9
2	E	336	ALA	2.9
1	D	228	PRO	2.8
1	A	18	TRP	2.7
1	D	223[A]	ALA	2.6
1	A	222	VAL	2.4
2	B	337	ALA	2.4
1	D	20	ASN	2.3
1	A	227	LEU	2.3
2	E	205	PRO	2.1
1	D	227	LEU	2.1
1	A	177	CYS	2.1
2	E	334	LEU	2.1

6.2 Non-standard residues in protein, DNA, RNA chains [i](#)

There are no non-standard protein/DNA/RNA residues in this entry.

6.3 Carbohydrates [i](#)

There are no carbohydrates in this entry.

6.4 Ligands [i](#)

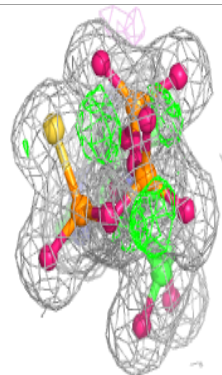
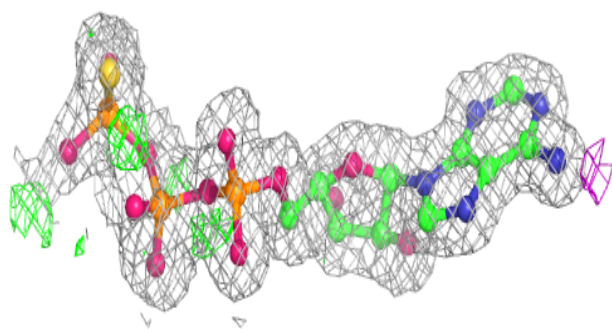
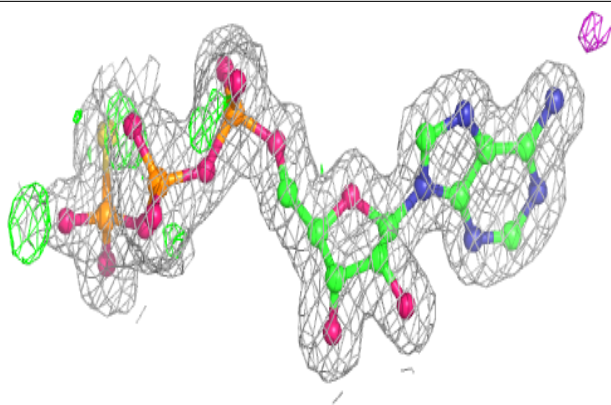
In the following table, the Atoms column lists the number of modelled atoms in the group and the number defined in the chemical component dictionary. The B-factors column lists the minimum, median, 95th percentile and maximum values of B factors of atoms in the group. The column labelled 'Q< 0.9' lists the number of atoms with occupancy less than 0.9.

Mol	Type	Chain	Res	Atoms	RSCC	RSR	B-factors(Å ²)	Q<0.9
3	CL	A	1231	1/1	0.88	0.08	51,51,51,51	0
3	CL	B	1338	1/1	0.95	0.07	40,40,40,40	0
5	MG	E	1380	1/1	0.96	0.05	36,36,36,36	0
3	CL	E	1338	1/1	0.96	0.06	32,32,32,32	0
3	CL	B	1341	1/1	0.97	0.09	31,31,31,31	0
6	AGS	B	1342[A]	31/31	0.98	0.08	11,15,26,29	31
7	ADP	B	1343[B]	27/27	0.98	0.08	12,15,21,26	27
7	ADP	E	1342[B]	27/27	0.98	0.07	11,14,20,25	27
6	AGS	E	1341[A]	31/31	0.98	0.07	10,13,25,26	31
5	MG	B	1380	1/1	0.99	0.08	34,34,34,34	0
5	MG	B	1340	1/1	0.99	0.04	15,15,15,15	0
5	MG	E	1340	1/1	0.99	0.03	15,15,15,15	0
4	ZN	E	1339	1/1	1.00	0.05	16,16,16,16	0
4	ZN	B	1339	1/1	1.00	0.06	17,17,17,17	0

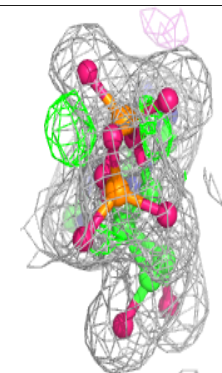
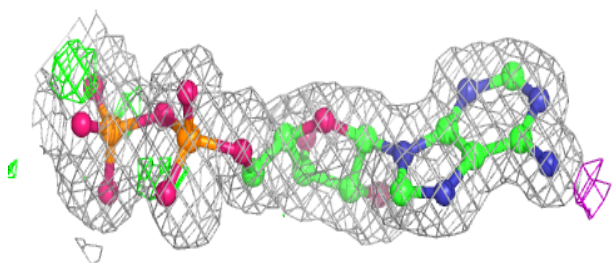
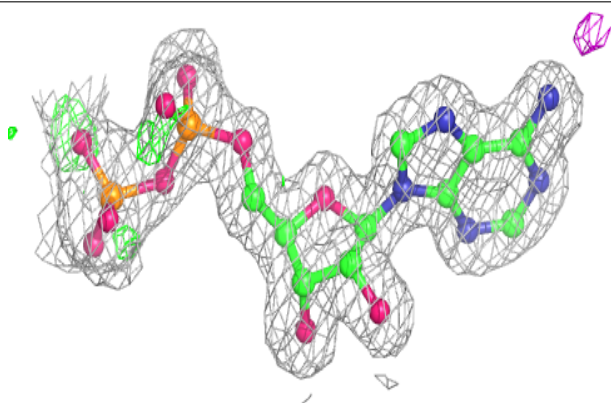
The following is a graphical depiction of the model fit to experimental electron density of all instances of the Ligand of Interest. In addition, ligands with molecular weight > 250 and outliers as shown on the geometry validation Tables will also be included. Each fit is shown from different orientation to approximate a three-dimensional view.

Electron density around AGS B 1342 (A):

$2mF_o-DF_c$ (at 0.7 rmsd) in gray
 mF_o-DF_c (at 3 rmsd) in purple (negative)
and green (positive)

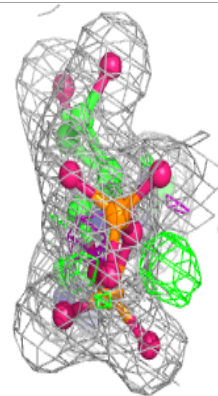
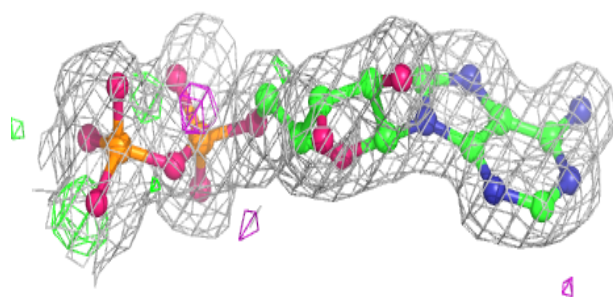
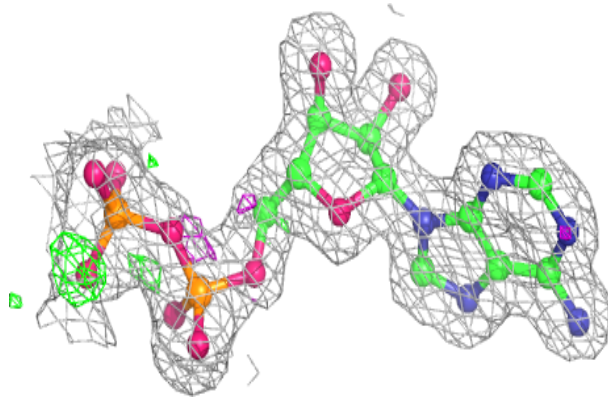
**Electron density around ADP B 1343 (B):**

$2mF_o-DF_c$ (at 0.7 rmsd) in gray
 mF_o-DF_c (at 3 rmsd) in purple (negative)
and green (positive)

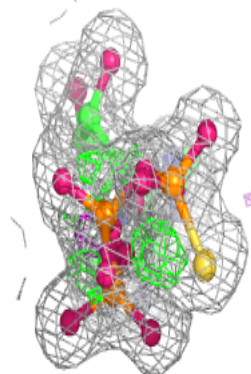
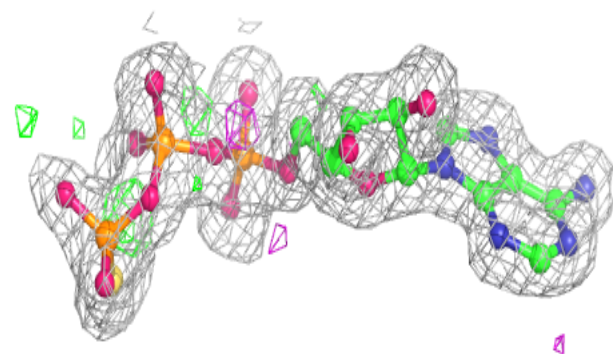
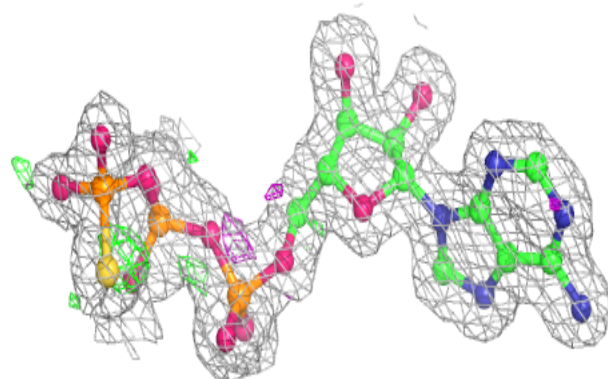


Electron density around ADP E 1342 (B):

$2mF_o-DF_c$ (at 0.7 rmsd) in gray
 mF_o-DF_c (at 3 rmsd) in purple (negative)
and green (positive)

**Electron density around AGS E 1341 (A):**

$2mF_o-DF_c$ (at 0.7 rmsd) in gray
 mF_o-DF_c (at 3 rmsd) in purple (negative)
and green (positive)



6.5 Other polymers

There are no such residues in this entry.