



Full wwPDB X-ray Structure Validation Report ⓘ

Nov 14, 2023 – 01:38 PM JST

PDB ID : 5ZFK
Title : UDP Glucose alpha tetrahydrobiopterin glycosyltransferase from *Synechococcus* species PCC 7942 - UDP-BH2 complex
Authors : Killivalavan, A.; Lee, K.H.
Deposited on : 2018-03-06
Resolution : 1.75 Å(reported)

This is a Full wwPDB X-ray Structure Validation Report for a publicly released PDB entry.

We welcome your comments at validation@mail.wwpdb.org

A user guide is available at

<https://www.wwpdb.org/validation/2017/XrayValidationReportHelp>

with specific help available everywhere you see the ⓘ symbol.

The types of validation reports are described at

<http://www.wwpdb.org/validation/2017/FAQs#types>.

The following versions of software and data (see [references ⓘ](#)) were used in the production of this report:

MolProbity : 4.02b-467
Mogul : 1.8.5 (274361), CSD as541be (2020)
Xtriage (Phenix) : 1.13
EDS : 2.36
buster-report : 1.1.7 (2018)
Percentile statistics : 20191225.v01 (using entries in the PDB archive December 25th 2019)
Refmac : 5.8.0158
CCP4 : 7.0.044 (Gargrove)
Ideal geometry (proteins) : Engh & Huber (2001)
Ideal geometry (DNA, RNA) : Parkinson et al. (1996)
Validation Pipeline (wwPDB-VP) : 2.36

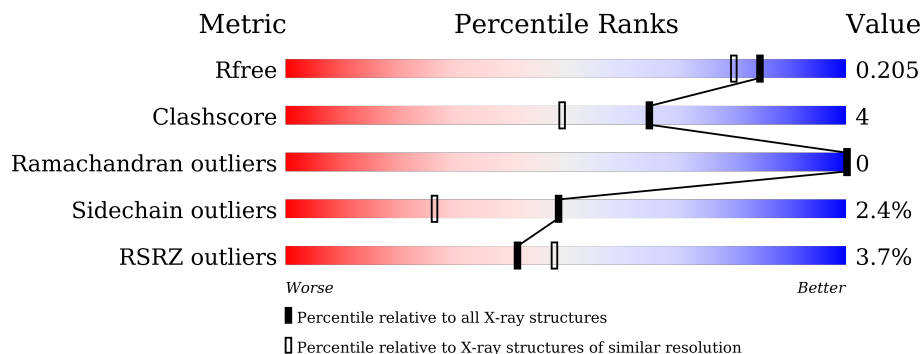
1 Overall quality at a glance

The following experimental techniques were used to determine the structure:

X-RAY DIFFRACTION

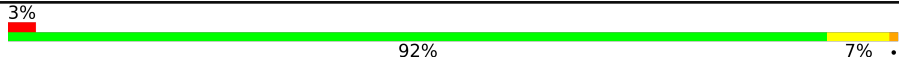

The reported resolution of this entry is 1.75 Å.

Percentile scores (ranging between 0-100) for global validation metrics of the entry are shown in the following graphic. The table shows the number of entries on which the scores are based.



Metric	Whole archive (#Entries)	Similar resolution (#Entries, resolution range(Å))
R_{free}	130704	2340 (1.76-1.76)
Clashscore	141614	2466 (1.76-1.76)
Ramachandran outliers	138981	2437 (1.76-1.76)
Sidechain outliers	138945	2437 (1.76-1.76)
RSRZ outliers	127900	2298 (1.76-1.76)

The table below summarises the geometric issues observed across the polymeric chains and their fit to the electron density. The red, orange, yellow and green segments of the lower bar indicate the fraction of residues that contain outliers for ≥ 3 , 2, 1 and 0 types of geometric quality criteria respectively. A grey segment represents the fraction of residues that are not modelled. The numeric value for each fraction is indicated below the corresponding segment, with a dot representing fractions $\leq 5\%$. The upper red bar (where present) indicates the fraction of residues that have poor fit to the electron density. The numeric value is given above the bar.

Mol	Chain	Length	Quality of chain
1	A	354	 3% 92% 7%
2	B	353	 5% 88% 11%

2 Entry composition [i](#)

There are 5 unique types of molecules in this entry. The entry contains 5872 atoms, of which 0 are hydrogens and 0 are deuteriums.

In the tables below, the ZeroOcc column contains the number of atoms modelled with zero occupancy, the AltConf column contains the number of residues with at least one atom in alternate conformation and the Trace column contains the number of residues modelled with at most 2 atoms.

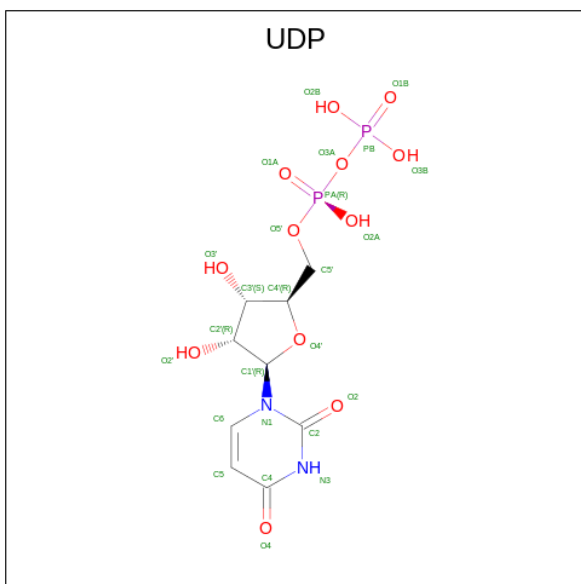
- Molecule 1 is a protein called UDP-glucose:tetrahydrobiopterin glucosyltransferase.

Mol	Chain	Residues	Atoms						ZeroOcc	AltConf	Trace
			Total	C	N	O	S	Se			
1	A	354	2698	1724	471	494	5	4	0	1	0

- Molecule 2 is a protein called UDP-glucose:tetrahydrobiopterin glucosyltransferase.

Mol	Chain	Residues	Atoms						ZeroOcc	AltConf	Trace
			Total	C	N	O	S	Se			
2	B	353	2696	1725	468	494	5	4	0	2	0

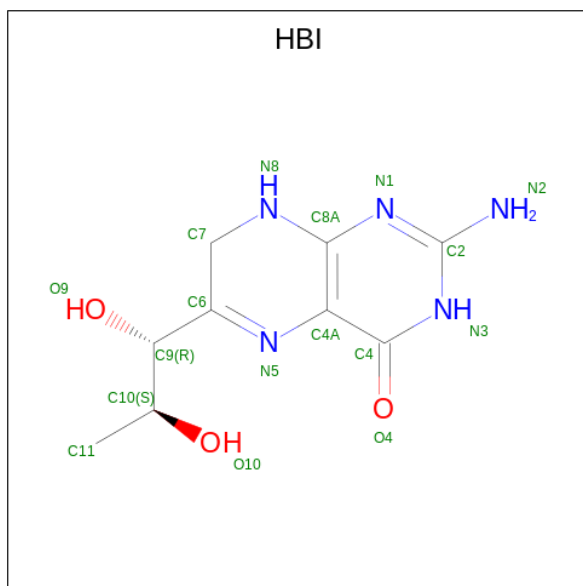
- Molecule 3 is URIDINE-5'-DIPHOSPHATE (three-letter code: UDP) (formula: C₉H₁₄N₂O₁₂P₂) (labeled as "Ligand of Interest" by depositor).



Mol	Chain	Residues	Atoms					ZeroOcc	AltConf
			Total	C	N	O	P		
3	A	1	25	9	2	12	2	0	0

- Molecule 4 is 7,8-DIHYDROBIOPTERIN (three-letter code: HBI) (formula: C₉H₁₃N₅O₃)

(labeled as "Ligand of Interest" by depositor).



Mol	Chain	Residues	Atoms				ZeroOcc	AltConf
4	A	1	Total	C	N	O	0	0
			17	9	5	3		
4	B	1	Total	C	N	O	0	0
			17	9	5	3		

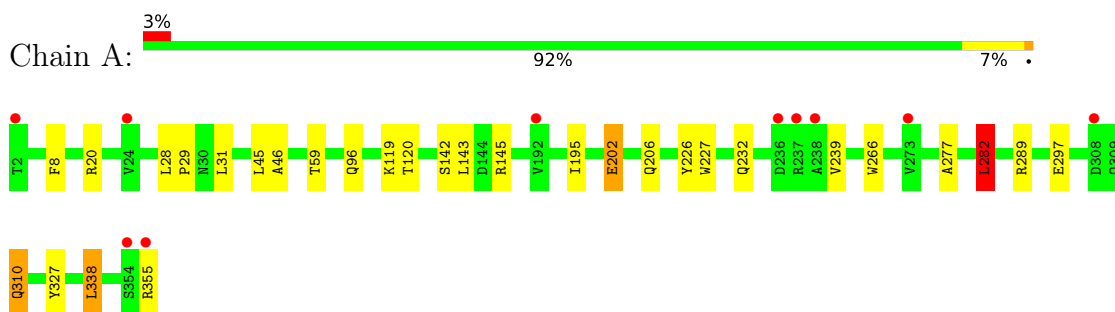
- Molecule 5 is water.

Mol	Chain	Residues	Atoms		ZeroOcc	AltConf
5	A	245	Total	O	0	0
			245	245		
5	B	174	Total	O	0	0
			174	174		

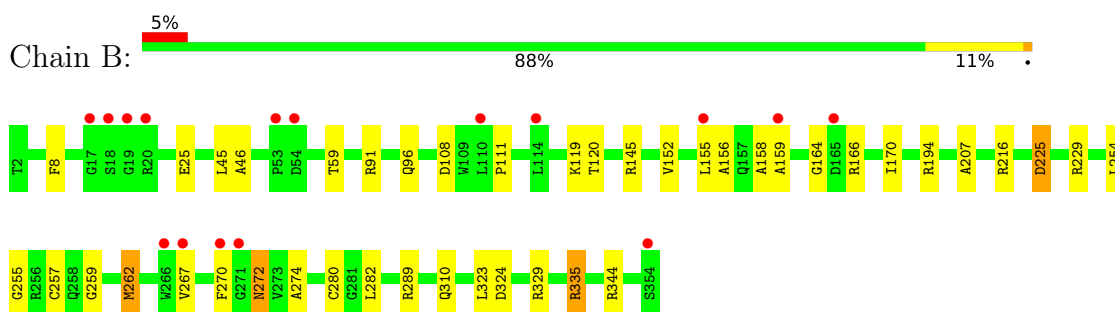
3 Residue-property plots [i](#)

These plots are drawn for all protein, RNA, DNA and oligosaccharide chains in the entry. The first graphic for a chain summarises the proportions of the various outlier classes displayed in the second graphic. The second graphic shows the sequence view annotated by issues in geometry and electron density. Residues are color-coded according to the number of geometric quality criteria for which they contain at least one outlier: green = 0, yellow = 1, orange = 2 and red = 3 or more. A red dot above a residue indicates a poor fit to the electron density ($RSRZ > 2$). Stretches of 2 or more consecutive residues without any outlier are shown as a green connector. Residues present in the sample, but not in the model, are shown in grey.

- Molecule 1: UDP-glucose:tetrahydrobiopterin glucosyltransferase



- Molecule 2: UDP-glucose:tetrahydrobiopterin glucosyltransferase



4 Data and refinement statistics i

Property	Value	Source
Space group	C 1 2 1	Depositor
Cell constants a, b, c, α , β , γ	168.37Å 79.98Å 53.83Å 90.00° 90.96° 90.00°	Depositor
Resolution (Å)	50.00 – 1.75 32.89 – 1.75	Depositor EDS
% Data completeness (in resolution range)	99.3 (50.00-1.75) 99.3 (32.89-1.75)	Depositor EDS
R_{merge}	(Not available)	Depositor
R_{sym}	(Not available)	Depositor
$\langle I/\sigma(I) \rangle$ ¹	1.87 (at 1.75Å)	Xtrriage
Refinement program	REFMAC 5.8.0158	Depositor
R, R_{free}	0.159 , 0.200 0.170 , 0.205	Depositor DCC
R_{free} test set	3646 reflections (5.07%)	wwPDB-VP
Wilson B-factor (Å ²)	24.4	Xtrriage
Anisotropy	0.008	Xtrriage
Bulk solvent k_{sol} (e/Å ³), B_{sol} (Å ²)	0.39 , 44.4	EDS
L-test for twinning ²	$\langle L \rangle = 0.49$, $\langle L^2 \rangle = 0.33$	Xtrriage
Estimated twinning fraction	0.023 for -h,-k,l	Xtrriage
F_o, F_c correlation	0.97	EDS
Total number of atoms	5872	wwPDB-VP
Average B, all atoms (Å ²)	29.0	wwPDB-VP

Xtrriage's analysis on translational NCS is as follows: *The largest off-origin peak in the Patterson function is 5.01% of the height of the origin peak. No significant pseudotranslation is detected.*

¹Intensities estimated from amplitudes.

²Theoretical values of $\langle |L| \rangle$, $\langle L^2 \rangle$ for acentric reflections are 0.5, 0.333 respectively for untwinned datasets, and 0.375, 0.2 for perfectly twinned datasets.

5 Model quality [i](#)

5.1 Standard geometry [i](#)

Bond lengths and bond angles in the following residue types are not validated in this section: HBI, UDP

The Z score for a bond length (or angle) is the number of standard deviations the observed value is removed from the expected value. A bond length (or angle) with $|Z| > 5$ is considered an outlier worth inspection. RMSZ is the root-mean-square of all Z scores of the bond lengths (or angles).

Mol	Chain	Bond lengths		Bond angles	
		RMSZ	# Z >5	RMSZ	# Z >5
1	A	0.98	0/2766	1.06	14/3770 (0.4%)
2	B	0.95	0/2767	1.06	18/3773 (0.5%)
All	All	0.96	0/5533	1.06	32/7543 (0.4%)

Chiral center outliers are detected by calculating the chiral volume of a chiral center and verifying if the center is modelled as a planar moiety or with the opposite hand. A planarity outlier is detected by checking planarity of atoms in a peptide group, atoms in a mainchain group or atoms of a sidechain that are expected to be planar.

Mol	Chain	#Chirality outliers	#Planarity outliers
2	B	0	1

There are no bond length outliers.

All (32) bond angle outliers are listed below:

Mol	Chain	Res	Type	Atoms	Z	Observed(°)	Ideal(°)
1	A	282	LEU	CB-CG-CD1	-10.82	92.60	111.00
2	B	91	ARG	NE-CZ-NH2	-9.21	115.70	120.30
2	B	145	ARG	NE-CZ-NH1	8.85	124.73	120.30
2	B	335	ARG	NE-CZ-NH1	8.38	124.49	120.30
1	A	20	ARG	NE-CZ-NH2	-8.14	116.23	120.30
2	B	335	ARG	NE-CZ-NH2	-8.12	116.24	120.30
1	A	282	LEU	CB-CG-CD2	-7.86	97.63	111.00
1	A	289	ARG	NE-CZ-NH1	7.37	123.98	120.30
2	B	329	ARG	NE-CZ-NH1	7.15	123.88	120.30
1	A	282	LEU	CA-CB-CG	-7.00	99.19	115.30
2	B	45	LEU	CA-CB-CG	6.97	131.33	115.30
2	B	8	PHE	CB-CG-CD1	6.88	125.61	120.80
2	B	262	MSE	CG-SE-CE	6.47	113.14	98.90
1	A	20	ARG	NE-CZ-NH1	6.36	123.48	120.30

Continued on next page...

Continued from previous page...

Mol	Chain	Res	Type	Atoms	Z	Observed(°)	Ideal(°)
1	A	338	LEU	CB-CG-CD1	6.33	121.76	111.00
1	A	289	ARG	NE-CZ-NH2	-6.17	117.22	120.30
1	A	45	LEU	CA-CB-CG	6.07	129.25	115.30
1	A	282	LEU	CB-CA-C	-5.98	98.84	110.20
2	B	166	ARG	NE-CZ-NH2	-5.91	117.35	120.30
2	B	216	ARG	NE-CZ-NH2	-5.89	117.36	120.30
2	B	289	ARG	NE-CZ-NH1	5.81	123.21	120.30
2	B	8	PHE	CB-CG-CD2	-5.77	116.76	120.80
2	B	145	ARG	NE-CZ-NH2	-5.62	117.49	120.30
2	B	289	ARG	NE-CZ-NH2	-5.54	117.53	120.30
2	B	324	ASP	CB-CG-OD1	5.47	123.22	118.30
2	B	329	ARG	NE-CZ-NH2	-5.37	117.62	120.30
1	A	143	LEU	CA-CB-CG	5.34	127.58	115.30
1	A	20	ARG	CG-CD-NE	-5.25	100.79	111.80
2	B	229	ARG	NE-CZ-NH2	-5.17	117.71	120.30
2	B	194	ARG	CG-CD-NE	-5.11	101.07	111.80
1	A	31	LEU	CB-CG-CD2	5.08	119.64	111.00
1	A	8	PHE	CB-CG-CD1	5.03	124.32	120.80

There are no chirality outliers.

All (1) planarity outliers are listed below:

Mol	Chain	Res	Type	Group
2	B	270	PHE	Peptide

5.2 Too-close contacts [\(i\)](#)

In the following table, the Non-H and H(model) columns list the number of non-hydrogen atoms and hydrogen atoms in the chain respectively. The H(added) column lists the number of hydrogen atoms added and optimized by MolProbity. The Clashes column lists the number of clashes within the asymmetric unit, whereas Symm-Clashes lists symmetry-related clashes.

Mol	Chain	Non-H	H(model)	H(added)	Clashes	Symm-Clashes
1	A	2698	0	2670	16	0
2	B	2696	0	2674	28	0
3	A	25	0	11	0	0
4	A	17	0	13	0	0
4	B	17	0	13	0	0
5	A	245	0	0	3	1
5	B	174	0	0	2	0
All	All	5872	0	5381	44	1

The all-atom clashscore is defined as the number of clashes found per 1000 atoms (including hydrogen atoms). The all-atom clashscore for this structure is 4.

All (44) close contacts within the same asymmetric unit are listed below, sorted by their clash magnitude.

Atom-1	Atom-2	Interatomic distance (Å)	Clash overlap (Å)
2:B:225:ASP:OD1	5:B:701:HOH:O	1.73	1.06
2:B:280:CYS:HB2	2:B:282[A]:LEU:CD1	1.95	0.96
1:A:96:GLN:HE22	1:A:119:LYS:H	1.36	0.73
2:B:280:CYS:HB2	2:B:282[A]:LEU:HD11	1.68	0.73
1:A:355:ARG:NH2	5:A:501:HOH:O	2.23	0.72
1:A:145:ARG:HD3	5:A:691:HOH:O	1.89	0.72
2:B:254:LEU:O	2:B:282[A]:LEU:HD21	1.90	0.71
2:B:254:LEU:O	2:B:282[A]:LEU:CD2	2.38	0.71
2:B:280:CYS:HB2	2:B:282[A]:LEU:HD12	1.73	0.70
2:B:96:GLN:HE22	2:B:119:LYS:H	1.44	0.64
2:B:255:GLY:HA2	2:B:282[A]:LEU:HD11	1.79	0.64
2:B:158:ALA:O	2:B:164:GLY:HA3	1.99	0.63
1:A:96:GLN:HE22	1:A:119:LYS:N	2.00	0.59
2:B:280:CYS:CB	2:B:282[A]:LEU:HD11	2.32	0.59
2:B:257:CYS:O	2:B:282[A]:LEU:HD23	2.04	0.58
2:B:259:GLY:CA	2:B:282[B]:LEU:HD11	2.34	0.57
2:B:152:VAL:HG21	2:B:158:ALA:HB2	1.87	0.56
2:B:96:GLN:HE22	2:B:119:LYS:N	2.05	0.55
2:B:335:ARG:HD2	5:B:863:HOH:O	2.06	0.54
2:B:272:ASN:N	2:B:272:ASN:OD1	2.40	0.53
1:A:297:GLU:OE1	1:A:327:TYR:OH	2.25	0.53
1:A:206:GLN:HB3	1:A:310:GLN:NE2	2.24	0.52
2:B:259:GLY:N	2:B:282[B]:LEU:HD11	2.24	0.52
1:A:355:ARG:NH1	5:A:505:HOH:O	2.43	0.51
2:B:254:LEU:O	2:B:282[A]:LEU:HD22	2.09	0.51
2:B:156:ALA:O	2:B:159:ALA:N	2.43	0.50
2:B:262:MSE:SE	2:B:274:ALA:HB2	2.62	0.49
1:A:277:ALA:HB1	1:A:282:LEU:HB3	1.96	0.48
2:B:207:ALA:N	2:B:310[B]:GLN:HE22	2.11	0.47
1:A:206:GLN:CB	1:A:310:GLN:HE22	2.27	0.47
2:B:155:LEU:O	2:B:158:ALA:HB3	2.14	0.46
2:B:96:GLN:NE2	2:B:120:THR:H	2.14	0.46
1:A:206:GLN:HB3	1:A:310:GLN:HE22	1.82	0.45
1:A:96:GLN:NE2	1:A:120:THR:H	2.15	0.45
1:A:28:LEU:HB3	1:A:29:PRO:HD3	2.00	0.44
1:A:202:GLU:OE1	1:A:226:TYR:OH	2.26	0.43
2:B:170:ILE:O	2:B:344:ARG:NE	2.50	0.43

Continued on next page...

Continued from previous page...

Atom-1	Atom-2	Interatomic distance (Å)	Clash overlap (Å)
1:A:46:ALA:O	1:A:59:THR:HA	2.19	0.42
1:A:28:LEU:C	1:A:28:LEU:HD23	2.41	0.41
2:B:46:ALA:O	2:B:59:THR:HA	2.21	0.41
2:B:257:CYS:O	2:B:282[B]:LEU:HD13	2.20	0.41
2:B:108:ASP:O	2:B:111:PRO:HD2	2.21	0.41
1:A:195:ILE:HG21	1:A:227:TRP:CE3	2.56	0.40

All (1) symmetry-related close contacts are listed below. The label for Atom-2 includes the symmetry operator and encoded unit-cell translations to be applied.

Atom-1	Atom-2	Interatomic distance (Å)	Clash overlap (Å)
5:A:577:HOH:O	5:A:577:HOH:O[2_656]	1.90	0.30

5.3 Torsion angles [i](#)

5.3.1 Protein backbone [i](#)

In the following table, the Percentiles column shows the percent Ramachandran outliers of the chain as a percentile score with respect to all X-ray entries followed by that with respect to entries of similar resolution.

The Analysed column shows the number of residues for which the backbone conformation was analysed, and the total number of residues.

Mol	Chain	Analysed	Favoured	Allowed	Outliers	Percentiles	
1	A	353/354 (100%)	348 (99%)	5 (1%)	0	100	100
2	B	353/353 (100%)	345 (98%)	8 (2%)	0	100	100
All	All	706/707 (100%)	693 (98%)	13 (2%)	0	100	100

There are no Ramachandran outliers to report.

5.3.2 Protein sidechains [i](#)

In the following table, the Percentiles column shows the percent sidechain outliers of the chain as a percentile score with respect to all X-ray entries followed by that with respect to entries of similar resolution.

The Analysed column shows the number of residues for which the sidechain conformation was analysed, and the total number of residues.

Mol	Chain	Analysed	Rotameric	Outliers	Percentiles	
1	A	275/271 (102%)	267 (97%)	8 (3%)	42	19
2	B	276/270 (102%)	271 (98%)	5 (2%)	59	40
All	All	551/541 (102%)	538 (98%)	13 (2%)	49	26

All (13) residues with a non-rotameric sidechain are listed below:

Mol	Chain	Res	Type
1	A	142	SER
1	A	202	GLU
1	A	232	GLN
1	A	239	VAL
1	A	266	TRP
1	A	282	LEU
1	A	310	GLN
1	A	338	LEU
2	B	25	GLU
2	B	225	ASP
2	B	267	VAL
2	B	272	ASN
2	B	323	LEU

Sometimes sidechains can be flipped to improve hydrogen bonding and reduce clashes. All (9) such sidechains are listed below:

Mol	Chain	Res	Type
1	A	37	GLN
1	A	96	GLN
1	A	232	GLN
1	A	242	GLN
1	A	310	GLN
2	B	96	GLN
2	B	206	GLN
2	B	258	GLN
2	B	331	GLN

5.3.3 RNA

There are no RNA molecules in this entry.

5.4 Non-standard residues in protein, DNA, RNA chains [i](#)

There are no non-standard protein/DNA/RNA residues in this entry.

5.5 Carbohydrates [i](#)

There are no monosaccharides in this entry.

5.6 Ligand geometry [i](#)

3 ligands are modelled in this entry.

In the following table, the Counts columns list the number of bonds (or angles) for which Mogul statistics could be retrieved, the number of bonds (or angles) that are observed in the model and the number of bonds (or angles) that are defined in the Chemical Component Dictionary. The Link column lists molecule types, if any, to which the group is linked. The Z score for a bond length (or angle) is the number of standard deviations the observed value is removed from the expected value. A bond length (or angle) with $|Z| > 2$ is considered an outlier worth inspection. RMSZ is the root-mean-square of all Z scores of the bond lengths (or angles).

Mol	Type	Chain	Res	Link	Bond lengths			Bond angles		
					Counts	RMSZ	# Z > 2	Counts	RMSZ	# Z > 2
4	HBI	A	402	-	13,18,18	1.67	3 (23%)	14,26,26	2.27	6 (42%)
3	UDP	A	401	-	24,26,26	1.26	3 (12%)	37,40,40	1.49	6 (16%)
4	HBI	B	600	-	13,18,18	1.99	3 (23%)	14,26,26	2.27	3 (21%)

In the following table, the Chirals column lists the number of chiral outliers, the number of chiral centers analysed, the number of these observed in the model and the number defined in the Chemical Component Dictionary. Similar counts are reported in the Torsion and Rings columns. '-' means no outliers of that kind were identified.

Mol	Type	Chain	Res	Link	Chirals	Torsions	Rings
4	HBI	A	402	-	-	0/4/17/17	0/2/2/2
3	UDP	A	401	-	-	2/16/32/32	0/2/2/2
4	HBI	B	600	-	-	2/4/17/17	0/2/2/2

All (9) bond length outliers are listed below:

Mol	Chain	Res	Type	Atoms	Z	Observed(Å)	Ideal(Å)
4	B	600	HBI	C6-N5	5.39	1.35	1.28
4	A	402	HBI	C6-N5	3.83	1.33	1.28
3	A	401	UDP	C4-N3	-3.52	1.32	1.38

Continued on next page...

Continued from previous page...

Mol	Chain	Res	Type	Atoms	Z	Observed(Å)	Ideal(Å)
4	B	600	HBI	C2-N1	3.38	1.41	1.35
4	A	402	HBI	O9-C9	2.70	1.47	1.42
3	A	401	UDP	C2-N3	-2.32	1.33	1.38
4	B	600	HBI	C4A-C8A	2.18	1.47	1.41
4	A	402	HBI	C2-N3	2.14	1.39	1.35
3	A	401	UDP	C6-C5	2.00	1.39	1.35

All (15) bond angle outliers are listed below:

Mol	Chain	Res	Type	Atoms	Z	Observed(°)	Ideal(°)
4	B	600	HBI	C2-N3-C4	4.67	123.35	115.93
4	A	402	HBI	C8A-C4A-C4	4.57	117.52	114.53
4	B	600	HBI	C8A-C4A-C4	4.40	117.41	114.53
4	B	600	HBI	C4A-C4-N3	-4.01	117.94	123.43
3	A	401	UDP	O4-C4-C5	-4.00	118.13	125.16
3	A	401	UDP	C5-C4-N3	3.86	120.61	114.84
4	A	402	HBI	O9-C9-C10	-3.47	99.55	110.06
4	A	402	HBI	C4A-C4-N3	-3.21	119.04	123.43
3	A	401	UDP	C4-N3-C2	-2.87	122.79	126.58
4	A	402	HBI	C2-N1-C8A	2.84	120.90	114.54
4	A	402	HBI	C2-N3-C4	2.75	120.30	115.93
3	A	401	UDP	O2-C2-N1	-2.65	119.27	122.79
3	A	401	UDP	N3-C2-N1	2.59	118.33	114.89
3	A	401	UDP	O5'-C5'-C4'	-2.05	101.93	108.99
4	A	402	HBI	N1-C2-N3	-2.03	122.24	125.42

There are no chirality outliers.

All (4) torsion outliers are listed below:

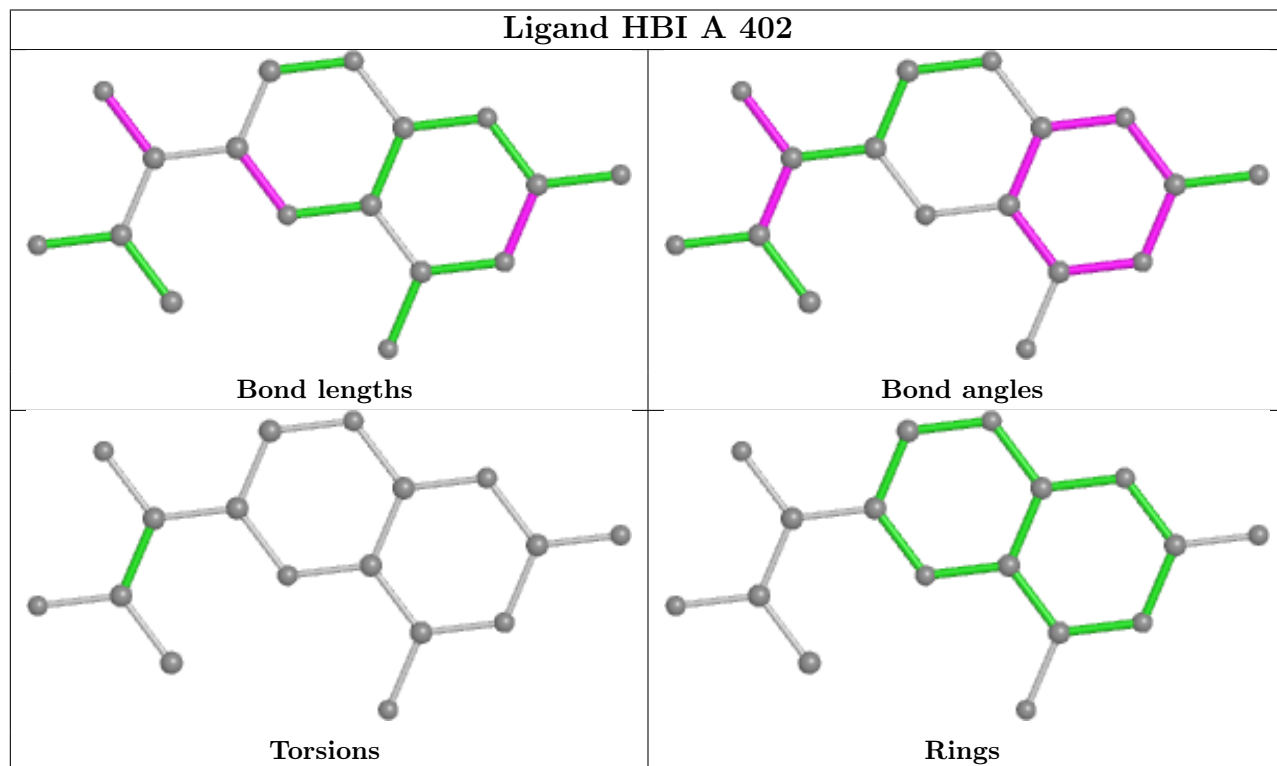
Mol	Chain	Res	Type	Atoms
4	B	600	HBI	C11-C10-C9-C6
3	A	401	UDP	PB-O3A-PA-O5'
4	B	600	HBI	O10-C10-C9-C6
3	A	401	UDP	O4'-C4'-C5'-O5'

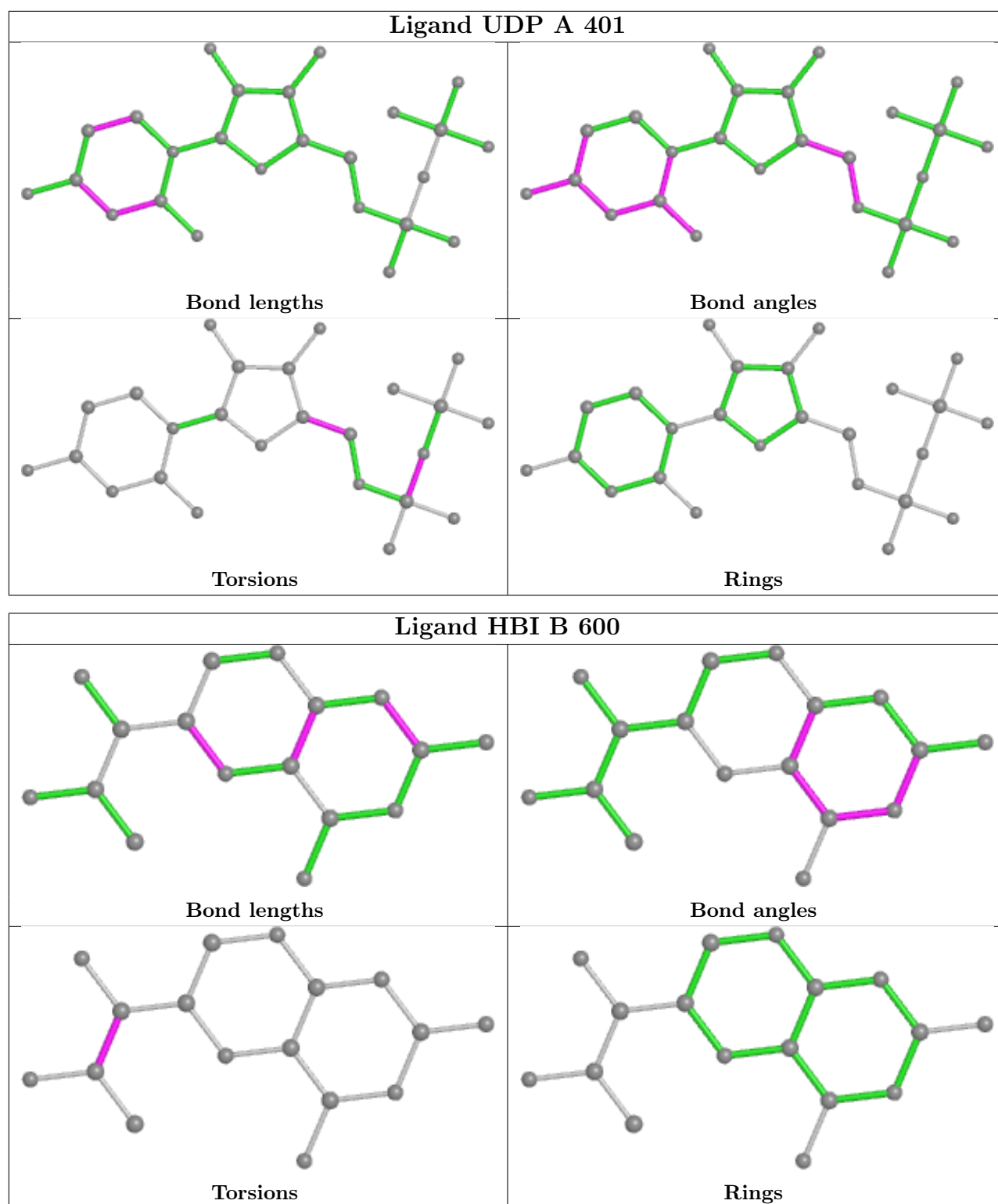
There are no ring outliers.

No monomer is involved in short contacts.

The following is a two-dimensional graphical depiction of Mogul quality analysis of bond lengths, bond angles, torsion angles, and ring geometry for all instances of the Ligand of Interest. In addition, ligands with molecular weight > 250 and outliers as shown on the validation Tables will also be included. For torsion angles, if less than 5% of the Mogul distribution of torsion angles is

within 10 degrees of the torsion angle in question, then that torsion angle is considered an outlier. Any bond that is central to one or more torsion angles identified as an outlier by Mogul will be highlighted in the graph. For rings, the root-mean-square deviation (RMSD) between the ring in question and similar rings identified by Mogul is calculated over all ring torsion angles. If the average RMSD is greater than 60 degrees and the minimal RMSD between the ring in question and any Mogul-identified rings is also greater than 60 degrees, then that ring is considered an outlier. The outliers are highlighted in purple. The color gray indicates Mogul did not find sufficient equivalents in the CSD to analyse the geometry.





5.7 Other polymers [i](#)

There are no such residues in this entry.

5.8 Polymer linkage issues

There are no chain breaks in this entry.

6 Fit of model and data

6.1 Protein, DNA and RNA chains

In the following table, the column labelled ‘#RSRZ > 2’ contains the number (and percentage) of RSRZ outliers, followed by percent RSRZ outliers for the chain as percentile scores relative to all X-ray entries and entries of similar resolution. The OWAB column contains the minimum, median, 95th percentile and maximum values of the occupancy-weighted average B-factor per residue. The column labelled ‘Q < 0.9’ lists the number of (and percentage) of residues with an average occupancy less than 0.9.

Mol	Chain	Analysed	<RSRZ>	#RSRZ>2	OWAB(Å ²)	Q<0.9
1	A	350/354 (98%)	-0.03	10 (2%) 51 57	15, 24, 40, 86	0
2	B	349/353 (98%)	0.06	16 (4%) 32 38	17, 29, 49, 80	0
All	All	699/707 (98%)	0.02	26 (3%) 41 48	15, 26, 45, 86	0

All (26) RSRZ outliers are listed below:

Mol	Chain	Res	Type	RSRZ
2	B	18	SER	5.4
1	A	237	ARG	5.0
1	A	355	ARG	4.7
1	A	354	SER	4.6
2	B	270	PHE	4.6
2	B	20	ARG	3.9
2	B	271	GLY	3.7
1	A	238	ALA	3.4
2	B	267	VAL	3.2
1	A	273	VAL	3.2
2	B	266	TRP	3.1
2	B	155	LEU	3.1
1	A	236	ASP	3.0
2	B	354	SER	3.0
2	B	53	PRO	2.7
1	A	24	VAL	2.5
1	A	2	THR	2.5
2	B	19	GLY	2.5
2	B	165	ASP	2.4
2	B	110	LEU	2.4
2	B	159	ALA	2.2
1	A	192	VAL	2.2
2	B	54	ASP	2.2
2	B	17	GLY	2.2

Continued on next page...

Continued from previous page...

Mol	Chain	Res	Type	RSRZ
2	B	114	LEU	2.1
1	A	308	ASP	2.1

6.2 Non-standard residues in protein, DNA, RNA chains [i](#)

There are no non-standard protein/DNA/RNA residues in this entry.

6.3 Carbohydrates [i](#)

There are no monosaccharides in this entry.

6.4 Ligands [i](#)

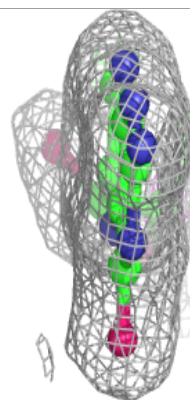
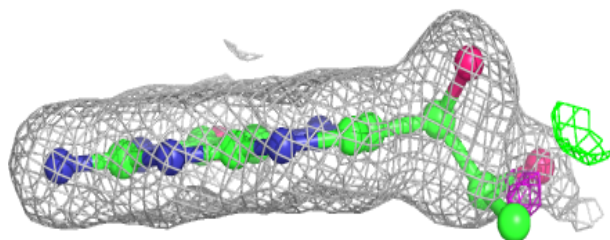
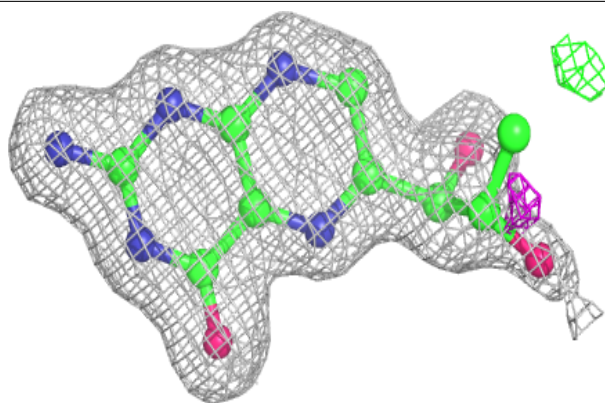
In the following table, the Atoms column lists the number of modelled atoms in the group and the number defined in the chemical component dictionary. The B-factors column lists the minimum, median, 95th percentile and maximum values of B factors of atoms in the group. The column labelled 'Q < 0.9' lists the number of atoms with occupancy less than 0.9.

Mol	Type	Chain	Res	Atoms	RSCC	RSR	B-factors(Å ²)	Q<0.9
4	HBI	B	600	17/17	0.95	0.07	24,30,52,57	0
4	HBI	A	402	17/17	0.97	0.11	17,19,40,42	0
3	UDP	A	401	25/25	0.99	0.11	18,20,21,22	0

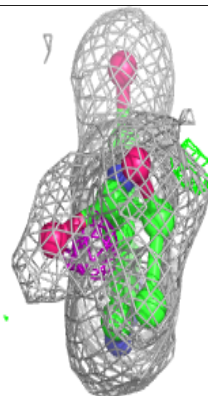
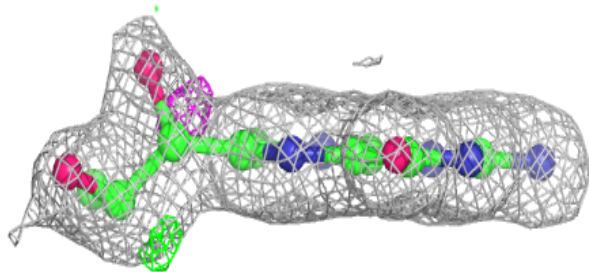
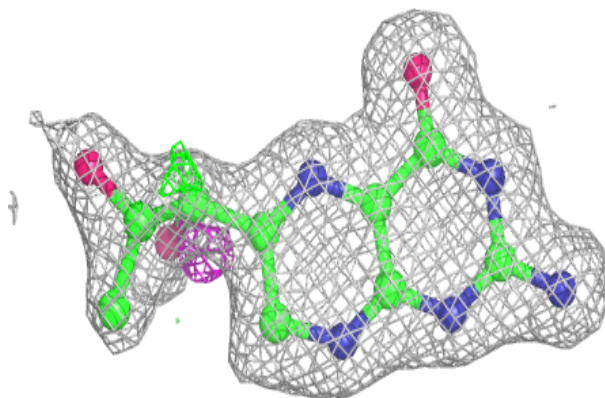
The following is a graphical depiction of the model fit to experimental electron density of all instances of the Ligand of Interest. In addition, ligands with molecular weight > 250 and outliers as shown on the geometry validation Tables will also be included. Each fit is shown from different orientation to approximate a three-dimensional view.

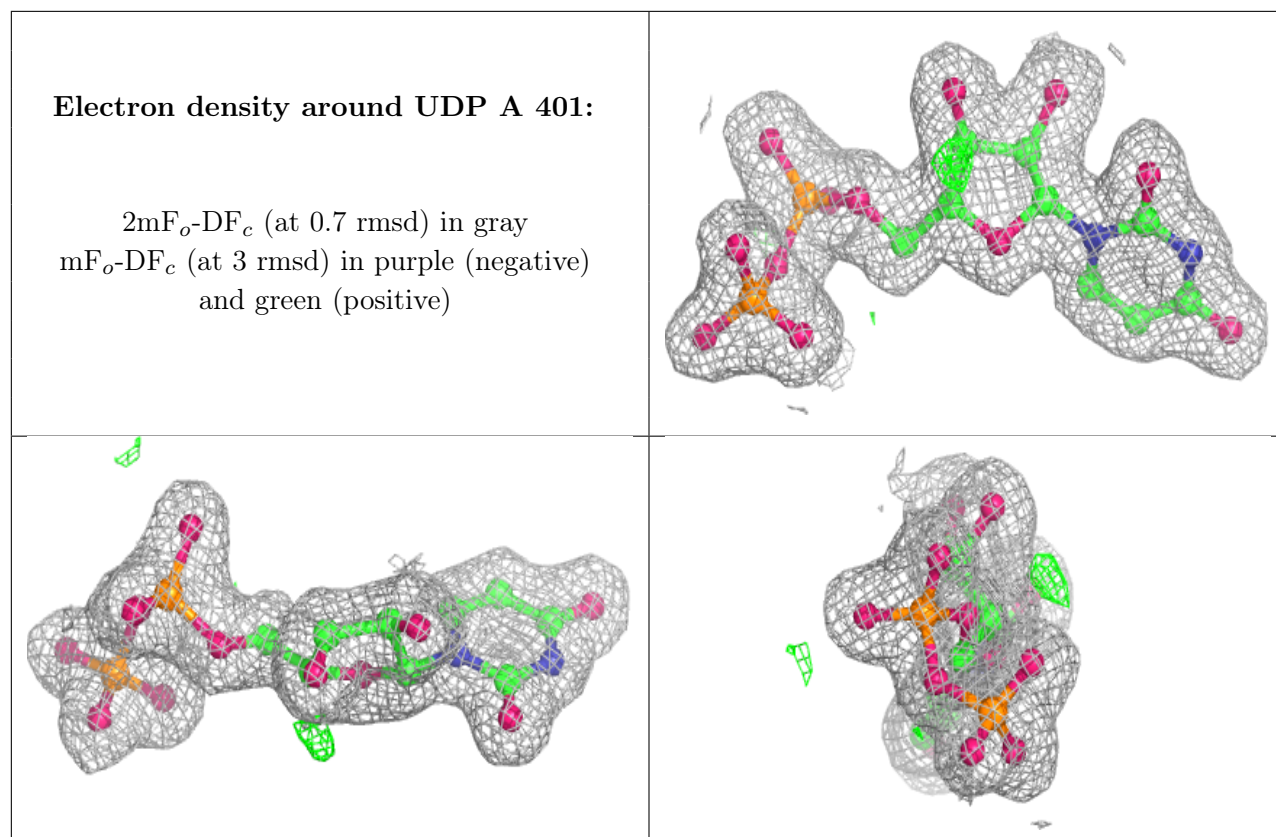
Electron density around HBI B 600:

$2mF_o-DF_c$ (at 0.7 rmsd) in gray
 mF_o-DF_c (at 3 rmsd) in purple (negative)
and green (positive)

**Electron density around HBI A 402:**

$2mF_o-DF_c$ (at 0.7 rmsd) in gray
 mF_o-DF_c (at 3 rmsd) in purple (negative)
and green (positive)





6.5 Other polymers [i](#)

There are no such residues in this entry.