



# Full wwPDB X-ray Structure Validation Report ⓘ

Jul 7, 2022 – 04:24 pm BST

PDB ID : 7ZF0  
Title : Crystal structure of UGT85B1 from Sorghum bicolor in complex with UDP and p-hydroxymandelonitrile  
Authors : Putkaradze, N.; Fredslund, F.; Welner, D.H.  
Deposited on : 2022-03-31  
Resolution : 1.50 Å(reported)

This is a Full wwPDB X-ray Structure Validation Report for a publicly released PDB entry.

We welcome your comments at [validation@mail.wwpdb.org](mailto:validation@mail.wwpdb.org)

A user guide is available at

<https://www.wwpdb.org/validation/2017/XrayValidationReportHelp>

with specific help available everywhere you see the ⓘ symbol.

The types of validation reports are described at <http://www.wwpdb.org/validation/2017/FAQs#types>.

---

The following versions of software and data (see [references ⓘ](#)) were used in the production of this report:

MolProbity : 4.02b-467  
Mogul : 1.8.4, CSD as541be (2020)  
Xtrriage (Phenix) : 1.13  
EDS : 2.29  
buster-report : 1.1.7 (2018)  
Percentile statistics : 20191225.v01 (using entries in the PDB archive December 25th 2019)  
Refmac : 5.8.0267  
CCP4 : 7.1.010 (Gargrove)  
Ideal geometry (proteins) : Engh & Huber (2001)  
Ideal geometry (DNA, RNA) : Parkinson et al. (1996)  
Validation Pipeline (wwPDB-VP) : 2.29

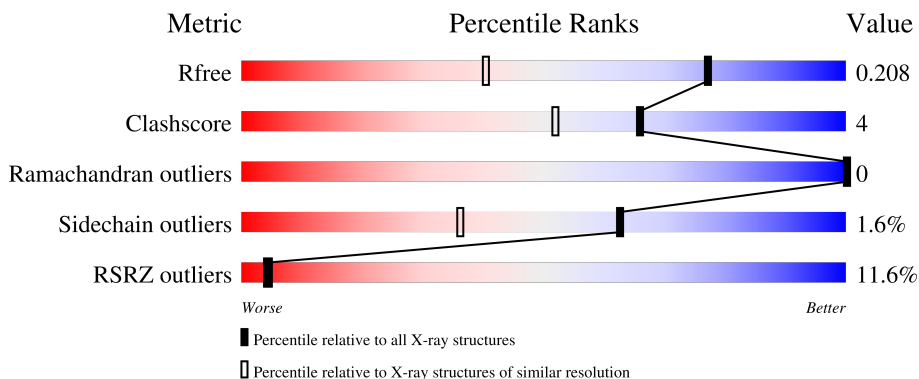
# 1 Overall quality at a glance

The following experimental techniques were used to determine the structure:

*X-RAY DIFFRACTION*

The reported resolution of this entry is 1.50 Å.

Percentile scores (ranging between 0-100) for global validation metrics of the entry are shown in the following graphic. The table shows the number of entries on which the scores are based.



Metric	Whole archive (#Entries)	Similar resolution (#Entries, resolution range(Å))
$R_{free}$	130704	2936 (1.50-1.50)
Clashscore	141614	3144 (1.50-1.50)
Ramachandran outliers	138981	3066 (1.50-1.50)
Sidechain outliers	138945	3064 (1.50-1.50)
RSRZ outliers	127900	2884 (1.50-1.50)

The table below summarises the geometric issues observed across the polymeric chains and their fit to the electron density. The red, orange, yellow and green segments of the lower bar indicate the fraction of residues that contain outliers for  $\geq 3$ , 2, 1 and 0 types of geometric quality criteria respectively. A grey segment represents the fraction of residues that are not modelled. The numeric value for each fraction is indicated below the corresponding segment, with a dot representing fractions  $\leq 5\%$ . The upper red bar (where present) indicates the fraction of residues that have poor fit to the electron density. The numeric value is given above the bar.

Mol	Chain	Length	Quality of chain
1	A	498	

The following table lists non-polymeric compounds, carbohydrate monomers and non-standard residues in protein, DNA, RNA chains that are outliers for geometric or electron-density-fit criteria:

Mol	Type	Chain	Res	Chirality	Geometry	Clashes	Electron density
3	EDO	A	511	-	-	X	-

## 2 Entry composition [i](#)

There are 5 unique types of molecules in this entry. The entry contains 7668 atoms, of which 3668 are hydrogens and 0 are deuteriums.

In the tables below, the ZeroOcc column contains the number of atoms modelled with zero occupancy, the AltConf column contains the number of residues with at least one atom in alternate conformation and the Trace column contains the number of residues modelled with at most 2 atoms.

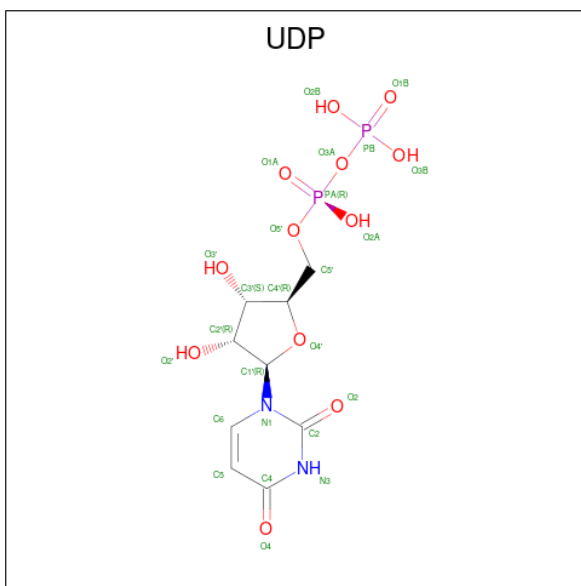
- Molecule 1 is a protein called Cyanohydrin beta-glucosyltransferase.

Mol	Chain	Residues	Atoms					ZeroOcc	AltConf	Trace	
			Total	C	H	N	O				S
1	A	474	7191	2281	3592	636	659	23	0	0	0

There are 6 discrepancies between the modelled and reference sequences:

Chain	Residue	Modelled	Actual	Comment	Reference
A	493	HIS	-	expression tag	UNP Q9SBL1
A	494	HIS	-	expression tag	UNP Q9SBL1
A	495	HIS	-	expression tag	UNP Q9SBL1
A	496	HIS	-	expression tag	UNP Q9SBL1
A	497	HIS	-	expression tag	UNP Q9SBL1
A	498	HIS	-	expression tag	UNP Q9SBL1

- Molecule 2 is URIDINE-5'-DIPHOSPHATE (three-letter code: UDP) (formula:  $C_9H_{14}N_2O_{12}P_2$ ) (labeled as "Ligand of Interest" by depositor).



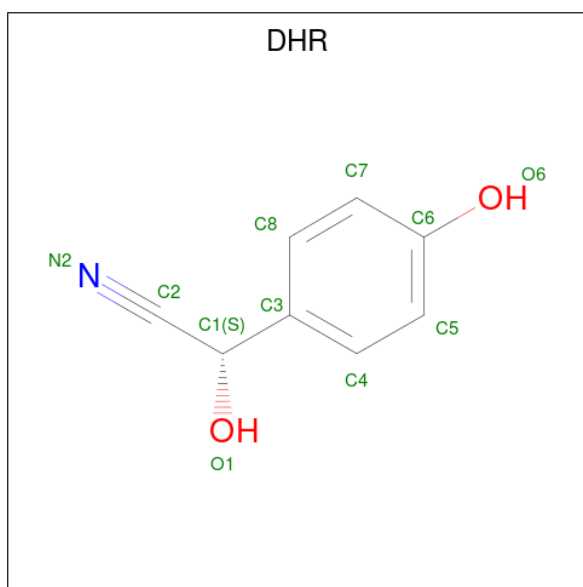
Mol	Chain	Residues	Atoms					ZeroOcc	AltConf	
			Total	C	H	N	O			P
2	A	1	36	9	11	2	12	2	0	0

- Molecule 3 is 1,2-ETHANEDIOL (three-letter code: EDO) (formula: C<sub>2</sub>H<sub>6</sub>O<sub>2</sub>).



Mol	Chain	Residues	Atoms				ZeroOcc	AltConf
			Total	C	H	O		
3	A	1	10	2	6	2	0	0
3	A	1	10	2	6	2	0	0
3	A	1	10	2	6	2	0	0
3	A	1	10	2	6	2	0	0
3	A	1	10	2	6	2	0	0
3	A	1	10	2	6	2	0	0
3	A	1	10	2	6	2	0	0
3	A	1	10	2	6	2	0	0
3	A	1	10	2	6	2	0	0

- Molecule 4 is (2S)-HYDROXY(4-HYDROXYPHENYL)ETHANENITRILE (three-letter code: DHR) (formula: C<sub>8</sub>H<sub>7</sub>NO<sub>2</sub>) (labeled as "Ligand of Interest" by depositor).



Mol	Chain	Residues	Atoms					ZeroOcc	AltConf
			Total	C	H	N	O		
4	A	1	18	8	7	1	2	0	0

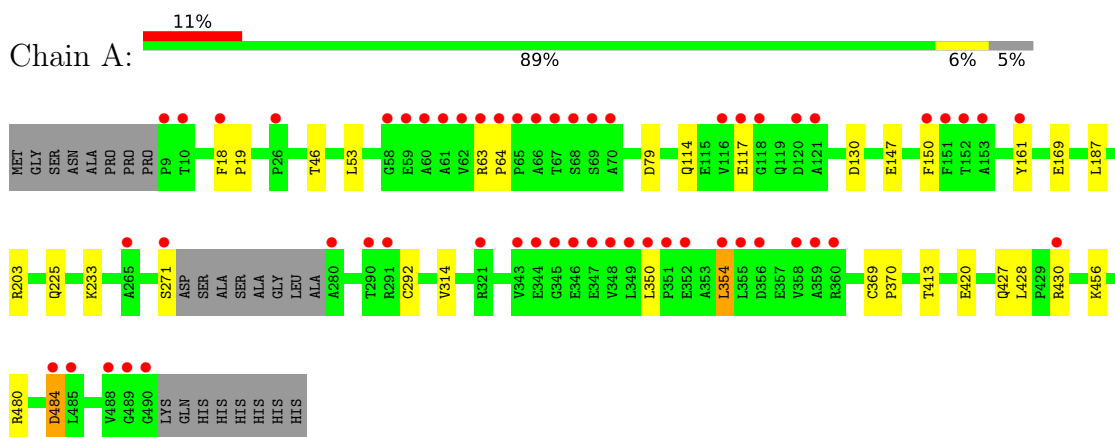
- Molecule 5 is water.

Mol	Chain	Residues	Atoms			ZeroOcc	AltConf
			Total	H	O		
5	A	329	333	4	329	0	0

### 3 Residue-property plots [i](#)

These plots are drawn for all protein, RNA, DNA and oligosaccharide chains in the entry. The first graphic for a chain summarises the proportions of the various outlier classes displayed in the second graphic. The second graphic shows the sequence view annotated by issues in geometry and electron density. Residues are color-coded according to the number of geometric quality criteria for which they contain at least one outlier: green = 0, yellow = 1, orange = 2 and red = 3 or more. A red dot above a residue indicates a poor fit to the electron density ( $RSRZ > 2$ ). Stretches of 2 or more consecutive residues without any outlier are shown as a green connector. Residues present in the sample, but not in the model, are shown in grey.

- Molecule 1: Cyanohydrin beta-glucosyltransferase



## 4 Data and refinement statistics

Property	Value	Source
Space group	P 21 21 21	Depositor
Cell constants a, b, c, $\alpha$ , $\beta$ , $\gamma$	76.63Å 91.38Å 92.75Å 90.00° 90.00° 90.00°	Depositor
Resolution (Å)	45.69 – 1.50 45.69 – 1.50	Depositor EDS
% Data completeness (in resolution range)	99.5 (45.69-1.50) 90.8 (45.69-1.50)	Depositor EDS
$R_{merge}$	(Not available)	Depositor
$R_{sym}$	(Not available)	Depositor
$\langle I/\sigma(I) \rangle$ <sup>1</sup>	0.25 (at 1.50Å)	Xtrriage
Refinement program	PHENIX 1.19_4092	Depositor
R, $R_{free}$	0.189 , 0.210 0.186 , 0.208	Depositor DCC
$R_{free}$ test set	5139 reflections (4.90%)	wwPDB-VP
Wilson B-factor (Å <sup>2</sup> )	25.7	Xtrriage
Anisotropy	0.316	Xtrriage
Bulk solvent $k_{sol}$ (e/Å <sup>3</sup> ), $B_{sol}$ (Å <sup>2</sup> )	(Not available) , (Not available)	EDS
L-test for twinning <sup>2</sup>	$\langle  L  \rangle = 0.49$ , $\langle L^2 \rangle = 0.33$	Xtrriage
Estimated twinning fraction	0.008 for -h,l,k	Xtrriage
$F_o, F_c$ correlation	0.97	EDS
Total number of atoms	7668	wwPDB-VP
Average B, all atoms (Å <sup>2</sup> )	42.0	wwPDB-VP

Xtrriage's analysis on translational NCS is as follows: *The largest off-origin peak in the Patterson function is 5.39% of the height of the origin peak. No significant pseudotranslation is detected.*

<sup>1</sup>Intensities estimated from amplitudes.

<sup>2</sup>Theoretical values of  $\langle |L| \rangle$ ,  $\langle L^2 \rangle$  for acentric reflections are 0.5, 0.333 respectively for untwinned datasets, and 0.375, 0.2 for perfectly twinned datasets.

## 5 Model quality [i](#)

### 5.1 Standard geometry [i](#)

Bond lengths and bond angles in the following residue types are not validated in this section: UDP, DHR, EDO

The Z score for a bond length (or angle) is the number of standard deviations the observed value is removed from the expected value. A bond length (or angle) with  $|Z| > 5$  is considered an outlier worth inspection. RMSZ is the root-mean-square of all Z scores of the bond lengths (or angles).

Mol	Chain	Bond lengths		Bond angles	
		RMSZ	# $ Z  > 5$	RMSZ	# $ Z  > 5$
1	A	0.52	1/3679 (0.0%)	0.71	1/5010 (0.0%)

All (1) bond length outliers are listed below:

Mol	Chain	Res	Type	Atoms	Z	Observed(Å)	Ideal(Å)
1	A	292	CYS	CB-SG	-5.01	1.73	1.81

All (1) bond angle outliers are listed below:

Mol	Chain	Res	Type	Atoms	Z	Observed(°)	Ideal(°)
1	A	130	ASP	CB-CG-OD1	5.43	123.19	118.30

There are no chirality outliers.

There are no planarity outliers.

### 5.2 Too-close contacts [i](#)

In the following table, the Non-H and H(model) columns list the number of non-hydrogen atoms and hydrogen atoms in the chain respectively. The H(added) column lists the number of hydrogen atoms added and optimized by MolProbity. The Clashes column lists the number of clashes within the asymmetric unit, whereas Symm-Clashes lists symmetry-related clashes.

Mol	Chain	Non-H	H(model)	H(added)	Clashes	Symm-Clashes
1	A	3599	3592	3591	25	0
2	A	25	11	11	1	0
3	A	36	54	54	12	0
4	A	11	7	7	0	0
5	A	329	4	0	11	2
All	All	4000	3668	3663	29	2



The all-atom clashscore is defined as the number of clashes found per 1000 atoms (including hydrogen atoms). The all-atom clashscore for this structure is 4.

All (29) close contacts within the same asymmetric unit are listed below, sorted by their clash magnitude.

Atom-1	Atom-2	Interatomic distance (Å)	Clash overlap (Å)
3:A:511:EDO:O1	5:A:601:HOH:O	1.60	0.97
1:A:169:GLU:OE2	5:A:602:HOH:O	1.95	0.83
1:A:114:GLN:OE1	5:A:603:HOH:O	2.08	0.71
1:A:114:GLN:NE2	5:A:606:HOH:O	2.27	0.66
1:A:480:ARG:HE	1:A:484:ASP:CG	2.02	0.63
1:A:147:GLU:HG3	3:A:511:EDO:H21	1.81	0.63
1:A:314:VAL:HG22	3:A:504:EDO:O1	2.04	0.58
1:A:420:GLU:OE2	5:A:604:HOH:O	2.17	0.58
1:A:147:GLU:OE2	3:A:511:EDO:H21	2.09	0.53
3:A:510:EDO:H21	5:A:631:HOH:O	2.10	0.52
1:A:480:ARG:HD2	1:A:484:ASP:HB3	1.93	0.51
3:A:510:EDO:C2	5:A:631:HOH:O	2.59	0.49
1:A:233:LYS:CG	3:A:511:EDO:H11	2.43	0.49
1:A:53:LEU:HD11	5:A:713:HOH:O	2.15	0.46
1:A:161:TYR:CE2	3:A:509:EDO:H22	2.50	0.46
1:A:46:THR:HB	1:A:79:ASP:OD2	2.16	0.46
1:A:430:ARG:HD3	5:A:666:HOH:O	2.14	0.45
1:A:187:LEU:HB3	1:A:203:ARG:HB3	1.98	0.45
1:A:369:CYS:HB2	1:A:370:PRO:HD2	1.99	0.45
2:A:501:UDP:O1A	3:A:502:EDO:H12	2.17	0.44
1:A:225:GLN:OE1	3:A:509:EDO:H11	2.18	0.44
1:A:117:GLU:HG3	5:A:630:HOH:O	2.19	0.42
1:A:350:LEU:HD13	1:A:354:LEU:CD2	2.50	0.42
1:A:233:LYS:HE2	3:A:511:EDO:H11	2.02	0.42
1:A:114:GLN:CD	5:A:606:HOH:O	2.56	0.41
1:A:427:GLN:HG2	1:A:428:LEU:O	2.20	0.41
1:A:233:LYS:HG3	3:A:511:EDO:H11	2.04	0.41
1:A:63:ARG:HB3	1:A:64:PRO:CD	2.51	0.40
1:A:18:PHE:CD1	1:A:19:PRO:HD2	2.56	0.40

All (2) symmetry-related close contacts are listed below. The label for Atom-2 includes the symmetry operator and encoded unit-cell translations to be applied.

Atom-1	Atom-2	Interatomic distance (Å)	Clash overlap (Å)
5:A:923:HOH:O	5:A:929:HOH:O[2_565]	1.98	0.22
5:A:866:HOH:O	5:A:882:HOH:O[2_564]	2.17	0.03

## 5.3 Torsion angles [i](#)

### 5.3.1 Protein backbone [i](#)

In the following table, the Percentiles column shows the percent Ramachandran outliers of the chain as a percentile score with respect to all X-ray entries followed by that with respect to entries of similar resolution.

The Analysed column shows the number of residues for which the backbone conformation was analysed, and the total number of residues.

Mol	Chain	Analysed	Favoured	Allowed	Outliers	Percentiles
1	A	470/498 (94%)	460 (98%)	10 (2%)	0	100 100

There are no Ramachandran outliers to report.

### 5.3.2 Protein sidechains [i](#)

In the following table, the Percentiles column shows the percent sidechain outliers of the chain as a percentile score with respect to all X-ray entries followed by that with respect to entries of similar resolution.

The Analysed column shows the number of residues for which the sidechain conformation was analysed, and the total number of residues.

Mol	Chain	Analysed	Rotameric	Outliers	Percentiles
1	A	374/392 (95%)	368 (98%)	6 (2%)	62 36

All (6) residues with a non-rotameric sidechain are listed below:

Mol	Chain	Res	Type
1	A	150	PHE
1	A	271	SER
1	A	354	LEU
1	A	413	THR
1	A	456	LYS
1	A	484	ASP

Sometimes sidechains can be flipped to improve hydrogen bonding and reduce clashes. There are no such sidechains identified.

### 5.3.3 RNA [i](#)

There are no RNA molecules in this entry.

## 5.4 Non-standard residues in protein, DNA, RNA chains [i](#)

There are no non-standard protein/DNA/RNA residues in this entry.

## 5.5 Carbohydrates [i](#)

There are no monosaccharides in this entry.

## 5.6 Ligand geometry [i](#)

11 ligands are modelled in this entry.

In the following table, the Counts columns list the number of bonds (or angles) for which Mogul statistics could be retrieved, the number of bonds (or angles) that are observed in the model and the number of bonds (or angles) that are defined in the Chemical Component Dictionary. The Link column lists molecule types, if any, to which the group is linked. The Z score for a bond length (or angle) is the number of standard deviations the observed value is removed from the expected value. A bond length (or angle) with  $|Z| > 2$  is considered an outlier worth inspection. RMSZ is the root-mean-square of all Z scores of the bond lengths (or angles).

Mol	Type	Chain	Res	Link	Bond lengths			Bond angles		
					Counts	RMSZ	# $ Z  > 2$	Counts	RMSZ	# $ Z  > 2$
3	EDO	A	507	-	3,3,3	0.49	0	2,2,2	0.53	0
2	UDP	A	501	-	24,26,26	0.55	0	37,40,40	0.56	0
3	EDO	A	510	-	3,3,3	0.44	0	2,2,2	0.40	0
3	EDO	A	509	-	3,3,3	0.51	0	2,2,2	0.33	0
3	EDO	A	505	-	3,3,3	0.42	0	2,2,2	0.57	0
3	EDO	A	511	-	3,3,3	0.50	0	2,2,2	0.31	0
4	DHR	A	508	-	11,11,11	0.85	1 (9%)	13,14,14	1.31	2 (15%)
3	EDO	A	506	-	3,3,3	0.39	0	2,2,2	0.48	0
3	EDO	A	503	-	3,3,3	0.55	0	2,2,2	0.66	0
3	EDO	A	504	-	3,3,3	0.55	0	2,2,2	0.32	0
3	EDO	A	502	-	3,3,3	0.44	0	2,2,2	0.40	0

In the following table, the Chirals column lists the number of chiral outliers, the number of chiral centers analysed, the number of these observed in the model and the number defined in the Chemical Component Dictionary. Similar counts are reported in the Torsion and Rings columns. '-' means no outliers of that kind were identified.

Mol	Type	Chain	Res	Link	Chirals	Torsions	Rings
3	EDO	A	507	-	-	1/1/1/1	-
2	UDP	A	501	-	-	2/16/32/32	0/2/2/2
3	EDO	A	510	-	-	0/1/1/1	-

*Continued on next page...*

Continued from previous page...

Mol	Type	Chain	Res	Link	Chirals	Torsions	Rings
3	EDO	A	509	-	-	0/1/1/1	-
3	EDO	A	505	-	-	0/1/1/1	-
3	EDO	A	511	-	-	1/1/1/1	-
4	DHR	A	508	-	-	0/4/6/6	0/1/1/1
3	EDO	A	506	-	-	1/1/1/1	-
3	EDO	A	503	-	-	0/1/1/1	-
3	EDO	A	504	-	-	1/1/1/1	-
3	EDO	A	502	-	-	0/1/1/1	-

All (1) bond length outliers are listed below:

Mol	Chain	Res	Type	Atoms	Z	Observed(Å)	Ideal(Å)
4	A	508	DHR	C1-C2	2.08	1.53	1.48

All (2) bond angle outliers are listed below:

Mol	Chain	Res	Type	Atoms	Z	Observed(°)	Ideal(°)
4	A	508	DHR	C3-C1-C2	-2.55	107.36	111.69
4	A	508	DHR	C5-C4-C3	-2.19	119.00	121.20

There are no chirality outliers.

All (6) torsion outliers are listed below:

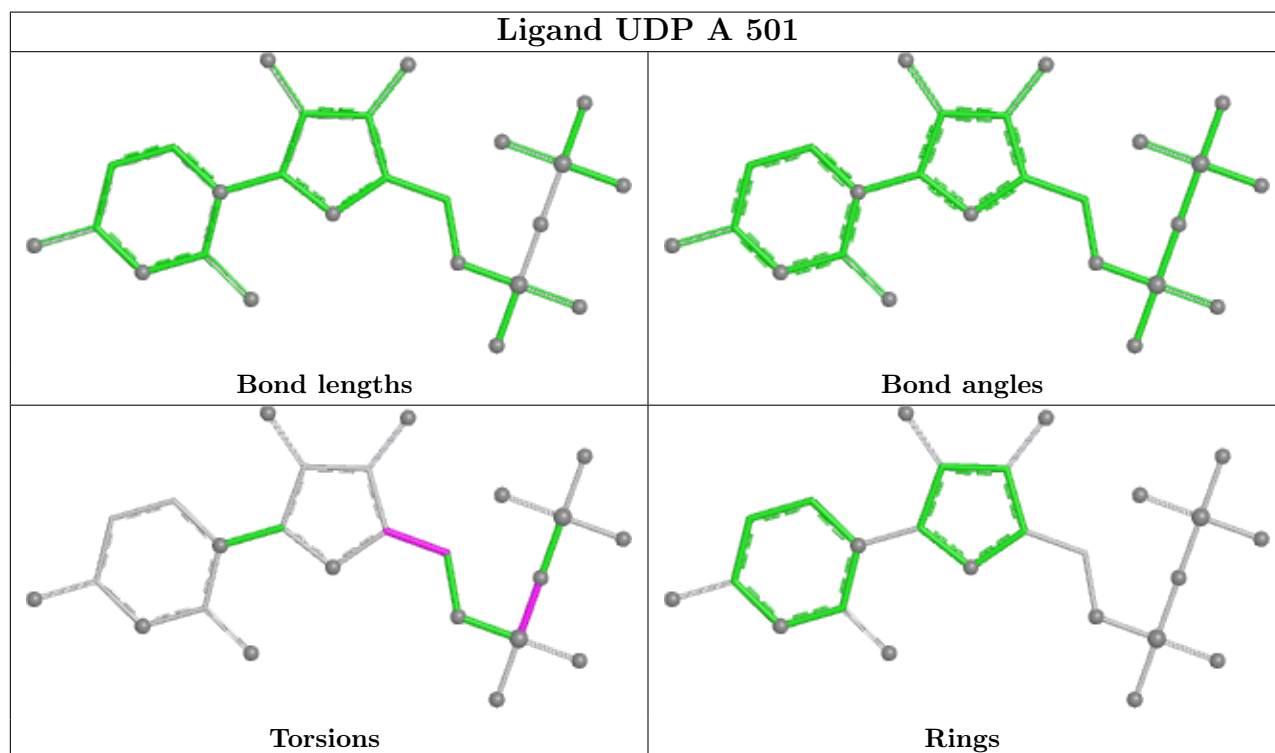
Mol	Chain	Res	Type	Atoms
2	A	501	UDP	PB-O3A-PA-O5'
3	A	511	EDO	O1-C1-C2-O2
3	A	506	EDO	O1-C1-C2-O2
3	A	507	EDO	O1-C1-C2-O2
3	A	504	EDO	O1-C1-C2-O2
2	A	501	UDP	O4'-C4'-C5'-O5'

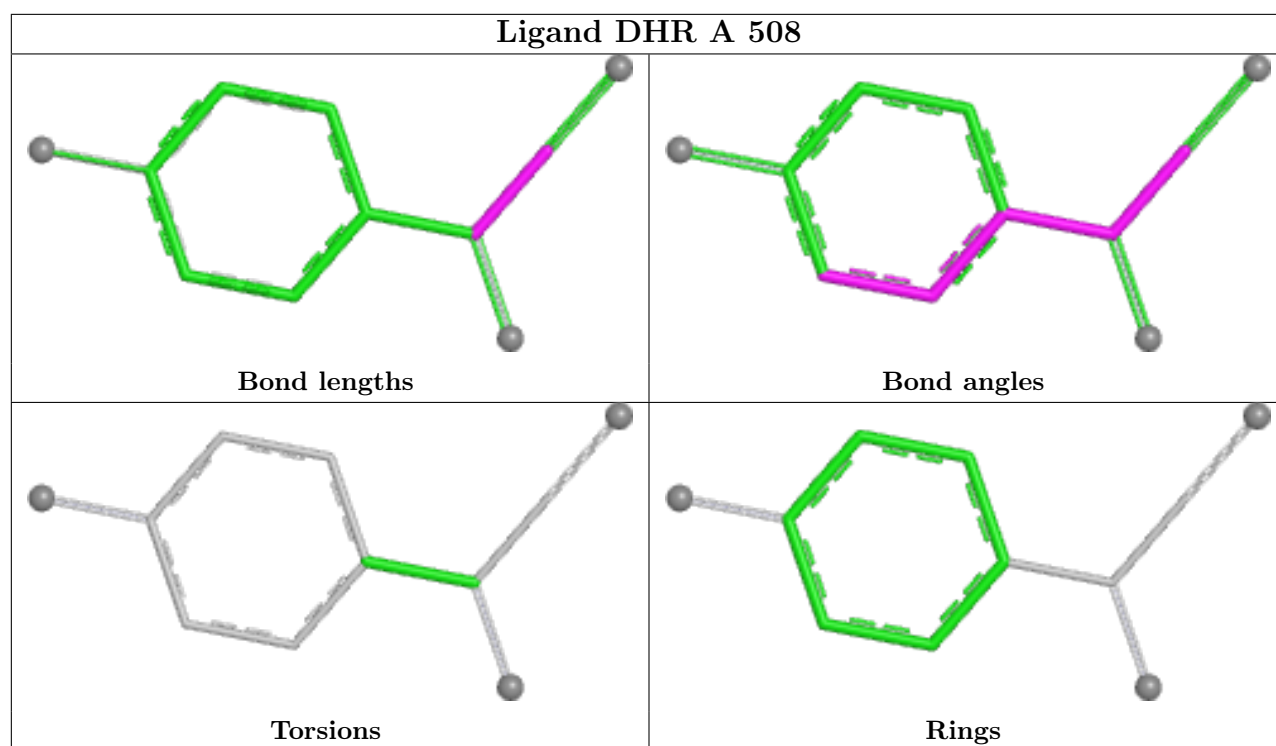
There are no ring outliers.

6 monomers are involved in 12 short contacts:

Mol	Chain	Res	Type	Clashes	Symm-Clashes
2	A	501	UDP	1	0
3	A	510	EDO	2	0
3	A	509	EDO	2	0
3	A	511	EDO	6	0
3	A	504	EDO	1	0
3	A	502	EDO	1	0

The following is a two-dimensional graphical depiction of Mogul quality analysis of bond lengths, bond angles, torsion angles, and ring geometry for all instances of the Ligand of Interest. In addition, ligands with molecular weight > 250 and outliers as shown on the validation Tables will also be included. For torsion angles, if less than 5% of the Mogul distribution of torsion angles is within 10 degrees of the torsion angle in question, then that torsion angle is considered an outlier. Any bond that is central to one or more torsion angles identified as an outlier by Mogul will be highlighted in the graph. For rings, the root-mean-square deviation (RMSD) between the ring in question and similar rings identified by Mogul is calculated over all ring torsion angles. If the average RMSD is greater than 60 degrees and the minimal RMSD between the ring in question and any Mogul-identified rings is also greater than 60 degrees, then that ring is considered an outlier. The outliers are highlighted in purple. The color gray indicates Mogul did not find sufficient equivalents in the CSD to analyse the geometry.





## 5.7 Other polymers [i](#)

There are no such residues in this entry.

## 5.8 Polymer linkage issues [i](#)

There are no chain breaks in this entry.

## 6 Fit of model and data

### 6.1 Protein, DNA and RNA chains

In the following table, the column labelled ‘#RSRZ> 2’ contains the number (and percentage) of RSRZ outliers, followed by percent RSRZ outliers for the chain as percentile scores relative to all X-ray entries and entries of similar resolution. The OWAB column contains the minimum, median, 95<sup>th</sup> percentile and maximum values of the occupancy-weighted average B-factor per residue. The column labelled ‘Q< 0.9’ lists the number of (and percentage) of residues with an average occupancy less than 0.9.

Mol	Chain	Analysed	<RSRZ>	#RSRZ>2	OWAB(Å <sup>2</sup> )	Q<0.9
1	A	474/498 (95%)	0.57	55 (11%) <b>4</b> <b>4</b>	24, 33, 70, 124	0

All (55) RSRZ outliers are listed below:

Mol	Chain	Res	Type	RSRZ
1	A	67	THR	12.2
1	A	68	SER	12.2
1	A	490	GLY	11.3
1	A	349	LEU	11.0
1	A	489	GLY	10.5
1	A	65	PRO	10.5
1	A	66	ALA	10.0
1	A	488	VAL	7.5
1	A	9	PRO	6.5
1	A	346	GLU	6.1
1	A	348	VAL	6.0
1	A	69	SER	5.7
1	A	347	GLU	5.7
1	A	60	ALA	5.5
1	A	70	ALA	4.9
1	A	63	ARG	4.9
1	A	280	ALA	4.9
1	A	120	ASP	4.8
1	A	484	ASP	4.6
1	A	485	LEU	4.1
1	A	350	LEU	4.0
1	A	116	VAL	4.0
1	A	58	GLY	3.9
1	A	290	THR	3.8
1	A	355	LEU	3.8
1	A	64	PRO	3.8
1	A	352	GLU	3.7

*Continued on next page...*

*Continued from previous page...*

Mol	Chain	Res	Type	RSRZ
1	A	117	GLU	3.6
1	A	345	GLY	3.4
1	A	59	GLU	3.4
1	A	150	PHE	3.2
1	A	430	ARG	3.1
1	A	151	PHE	3.1
1	A	358	VAL	3.0
1	A	18	PHE	2.9
1	A	118	GLY	2.9
1	A	61	ALA	2.9
1	A	343	VAL	2.8
1	A	360	ARG	2.8
1	A	359	ALA	2.8
1	A	161	TYR	2.8
1	A	291	ARG	2.6
1	A	351	PRO	2.6
1	A	10	THR	2.5
1	A	271	SER	2.4
1	A	62	VAL	2.4
1	A	121	ALA	2.2
1	A	26	PRO	2.2
1	A	265	ALA	2.2
1	A	344	GLU	2.1
1	A	321	ARG	2.1
1	A	354	LEU	2.1
1	A	153	ALA	2.1
1	A	152	THR	2.0
1	A	356	ASP	2.0

## 6.2 Non-standard residues in protein, DNA, RNA chains [i](#)

There are no non-standard protein/DNA/RNA residues in this entry.

## 6.3 Carbohydrates [i](#)

There are no monosaccharides in this entry.

## 6.4 Ligands [i](#)

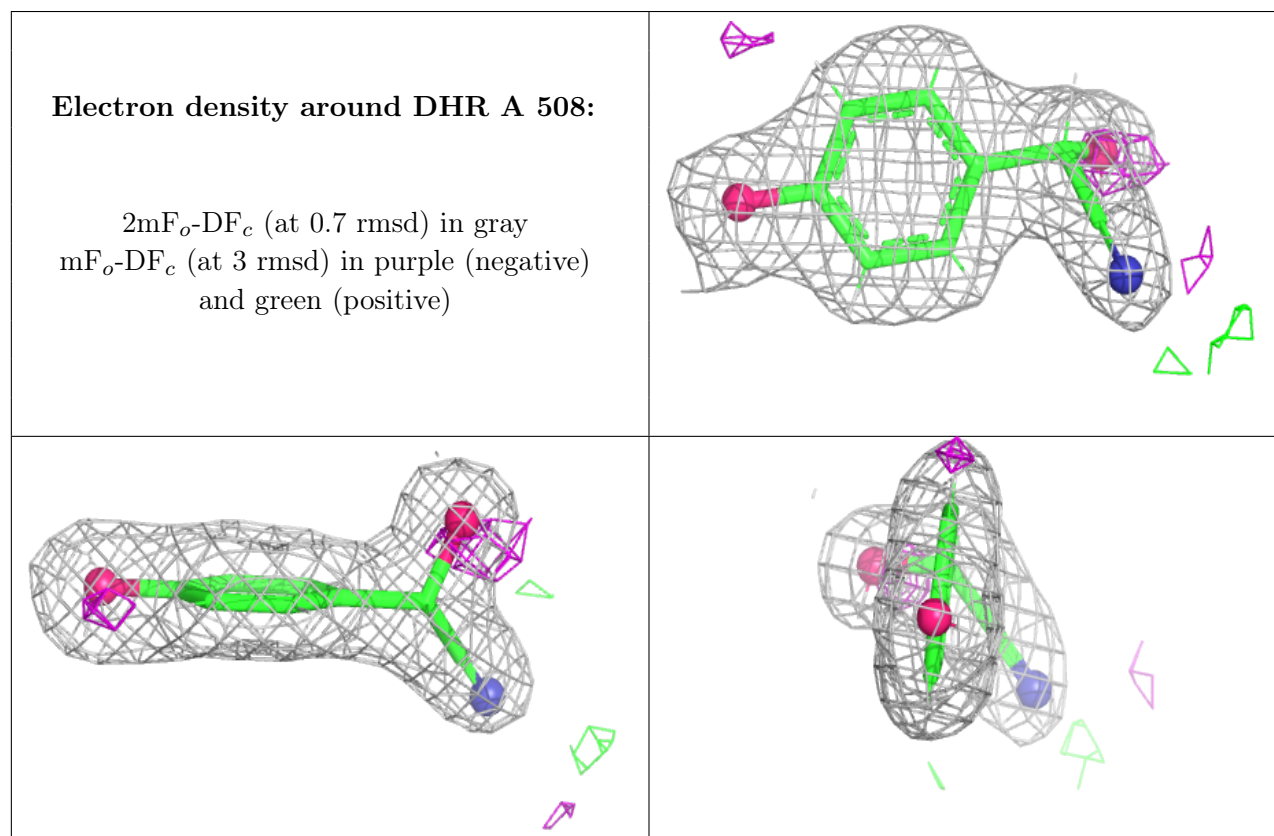
In the following table, the Atoms column lists the number of modelled atoms in the group and the number defined in the chemical component dictionary. The B-factors column lists the minimum,

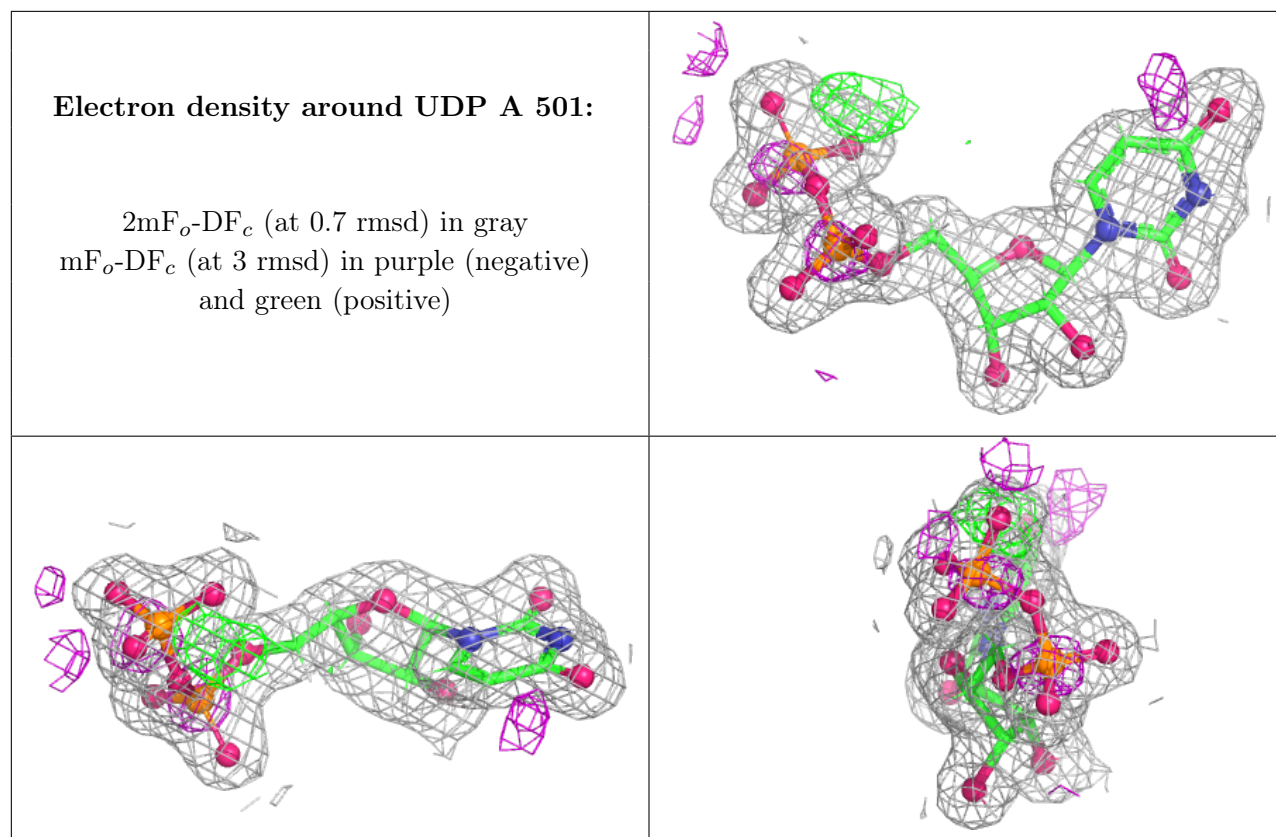


median, 95<sup>th</sup> percentile and maximum values of B factors of atoms in the group. The column labelled 'Q< 0.9' lists the number of atoms with occupancy less than 0.9.

Mol	Type	Chain	Res	Atoms	RSCC	RSR	B-factors(Å <sup>2</sup> )	Q<0.9
3	EDO	A	503	4/4	0.71	0.30	44,55,67,67	0
3	EDO	A	505	4/4	0.81	0.34	51,69,92,110	0
3	EDO	A	511	4/4	0.81	0.43	41,49,57,69	0
3	EDO	A	504	4/4	0.87	0.36	47,56,61,74	0
3	EDO	A	510	4/4	0.88	0.26	47,57,60,65	0
3	EDO	A	507	4/4	0.88	0.34	36,55,67,67	0
3	EDO	A	502	4/4	0.90	0.14	34,43,50,52	0
3	EDO	A	506	4/4	0.91	0.23	45,55,66,78	0
3	EDO	A	509	4/4	0.94	0.15	28,36,43,43	0
4	DHR	A	508	11/11	0.95	0.19	24,34,46,49	0
2	UDP	A	501	25/25	0.98	0.10	27,34,41,44	0

The following is a graphical depiction of the model fit to experimental electron density of all instances of the Ligand of Interest. In addition, ligands with molecular weight > 250 and outliers as shown on the geometry validation Tables will also be included. Each fit is shown from different orientation to approximate a three-dimensional view.





## 6.5 Other polymers [i](#)

There are no such residues in this entry.