



## Full wwPDB EM Validation Report ⓘ

Nov 18, 2022 – 04:12 am GMT

PDB ID : 7ZFW  
EMDB ID : EMD-14704  
Title : Structure of human 80S ribosome obtained from ssDNA coated grid  
Authors : Hrebik, D.; Plevka, P.  
Deposited on : 2022-04-01  
Resolution : 3.80 Å (reported)  
Based on initial model : 6QZP

This is a Full wwPDB EM Validation Report for a publicly released PDB entry.

We welcome your comments at [validation@mail.wwpdb.org](mailto:validation@mail.wwpdb.org)

A user guide is available at

<https://www.wwpdb.org/validation/2017/EMValidationReportHelp>

with specific help available everywhere you see the ⓘ symbol.

The types of validation reports are described at

<http://www.wwpdb.org/validation/2017/FAQs#types>.

---

The following versions of software and data (see [references ⓘ](#)) were used in the production of this report:

EMDB validation analysis : 0.0.1.dev43  
Mogul : 1.8.4, CSD as541be (2020)  
MolProbity : 4.02b-467  
Percentile statistics : 20191225.v01 (using entries in the PDB archive December 25th 2019)  
MapQ : 1.9.9  
Ideal geometry (proteins) : Engh & Huber (2001)  
Ideal geometry (DNA, RNA) : Parkinson et al. (1996)  
Validation Pipeline (wwPDB-VP) : 2.31.2



## 2 Entry composition

There is only 1 type of molecule in this entry. The entry contains 13188 atoms, of which 0 are hydrogens and 0 are deuteriums.

In the tables below, the AltConf column contains the number of residues with at least one atom in alternate conformation and the Trace column contains the number of residues modelled with at most 2 atoms.

- Molecule 1 is a RNA chain called RNA (615-MER).

Mol	Chain	Residues	Atoms					AltConf	Trace
			Total	C	N	O	P		
1	L5	615	13188	5871	2443	4260	614	0	0



U C C C G A G G C C C U D U C C C A G U D C C G C C G G A G G G C C A C C A C C G G C C C G G C C G  
G G G A G U G G C C A G C A C G A A G C C G A C C G U D U D A G G A C C C G A A C C G A G A U G G U G A A C C C G G C A  
G G C C G A A G C C C A G A A A A A C U C U G G C A A G G C C G U U C C G A A C C G G U C C U G A A A A U C G G U C  
G U C C G A C C U G G G A G A A A G G G C C U U G G A A G C C A A U C C G U U A A A C C A U U C C U C C U C G  
A A G U U U C C C U C A G G A U A A G A C U G G G C C G U D U C C A G C C C G A C C C G A C C G C C A G C C A G U U C  
C G G U A A A G C C C A A A U G A U A U A G A G G G C C U U G G G C C C G A A A C C G A U U C C U A A A C U U  
U A A A U G G G U U A A A G A A G C C C C G G C C U C C G C C G G G C C U G G G A A C C G G A A C C U U C C U A G  
U G G C C A C U U U U G G U A A A G C A A A A C C U G G G C C C U G C C G G G A A C C C G G A A C C G G G U A A G G C  
G C C C G A U G C C C A C G C C U C C A A C C C C C C C A A G G G U U U G G A A C C C A A A G U U A G A C C A A C  
G G U G C C A U G A A G U C C A A G U C C A A C C C U D U A A C C G G A A G C C G G A A C C A A C C C C C C C C  
U A G C C C U G A A A A A G A G A A U G G C C G G A G C C G G U C C G G G C C A A C C A A C C C C C C C C C C  
G A G A G U G G A A G G A G C C G G G G G C C C C G A G C C C G G G C  
G G C C G C U D U G C C G G G U A A G C C U U A A A A G C C U D A A G G A A G C C C C C C C C C C C C C C C C C C  
A G A U C U U G G U G G U A A G U A A A A U C C A  
G U C C A A U G U G A A A C A G C C A A G U U U A  
U U C C G A A G G G A A C G G C C G G C C A A U U C  
A G A U C C C C G G A A C C G G G A A G G C C G G G C  
A C C G A A C C C G G A A G A A G G C C G G G G G C  
A G G C  
U C C C G G C C G G G G C  
U C C C G G C  
G U U G G A A C A A A U G G U A A G G G A A G C C A A G C  
U G G C C U A A G G G C U D U G G G U U C C A G C  
G A C C A G G A A C C G G A C C U U U A  
U G A C C G C G A U U U C  
G C G G G U A A A C G G C C G G G A A A C U A



## 4 Experimental information

Property	Value	Source
EM reconstruction method	SINGLE PARTICLE	Depositor
Imposed symmetry	POINT, C1	Depositor
Number of particles used	66372	Depositor
Resolution determination method	FSC 0.143 CUT-OFF	Depositor
CTF correction method	PHASE FLIPPING AND AMPLITUDE CORRECTION	Depositor
Microscope	FEI TITAN KRIOS	Depositor
Voltage (kV)	300	Depositor
Electron dose ( $e^-/\text{\AA}^2$ )	64	Depositor
Minimum defocus (nm)	300	Depositor
Maximum defocus (nm)	1700	Depositor
Magnification	75000	Depositor
Image detector	FEI FALCON III (4k x 4k)	Depositor
Maximum map value	0.089	Depositor
Minimum map value	-0.028	Depositor
Average map value	0.002	Depositor
Map value standard deviation	0.012	Depositor
Recommended contour level	0.03	Depositor
Map size (Å)	321.00003, 321.00003, 321.00003	wwPDB
Map dimensions	300, 300, 300	wwPDB
Map angles (°)	90.0, 90.0, 90.0	wwPDB
Pixel spacing (Å)	1.07, 1.07, 1.07	Depositor

## 5 Model quality i

### 5.1 Standard geometry i

Bond lengths and bond angles in the following residue types are not validated in this section: 2MG, OMG, A2M

The Z score for a bond length (or angle) is the number of standard deviations the observed value is removed from the expected value. A bond length (or angle) with  $|Z| > 5$  is considered an outlier worth inspection. RMSZ is the root-mean-square of all Z scores of the bond lengths (or angles).

Mol	Chain	Bond lengths		Bond angles	
		RMSZ	# Z  >5	RMSZ	# Z  >5
1	L5	0.41	0/14676	0.91	22/22900 (0.1%)

There are no bond length outliers.

All (22) bond angle outliers are listed below:

Mol	Chain	Res	Type	Atoms	Z	Observed(°)	Ideal(°)
1	L5	485	C	N1-C2-O2	12.82	126.59	118.90
1	L5	485	C	C2-N1-C1'	11.73	131.70	118.80
1	L5	485	C	N3-C2-O2	-10.62	114.47	121.90
1	L5	485	C	C6-N1-C2	-8.57	116.87	120.30
1	L5	485	C	C6-N1-C1'	-7.87	111.36	120.80
1	L5	209	U	C2-N1-C1'	7.59	126.81	117.70
1	L5	504	G	C2'-C3'-O3'	6.97	124.86	113.70
1	L5	209	U	N1-C2-O2	6.88	127.62	122.80
1	L5	233	U	N3-C2-O2	-6.62	117.56	122.20
1	L5	233	U	N1-C2-O2	6.54	127.38	122.80
1	L5	485	C	C5-C6-N1	6.32	124.16	121.00
1	L5	209	U	N3-C2-O2	-6.11	117.92	122.20
1	L5	112	C	N1-C2-O2	6.01	122.51	118.90
1	L5	511	C	N1-C2-O2	5.91	122.45	118.90
1	L5	511	C	N3-C2-O2	-5.65	117.94	121.90
1	L5	449	C	N1-C2-O2	5.63	122.28	118.90
1	L5	511	C	C6-N1-C2	-5.50	118.10	120.30
1	L5	406	C	P-O3'-C3'	5.38	126.16	119.70
1	L5	274	C	N1-C2-O2	5.33	122.09	118.90
1	L5	209	U	C6-N1-C1'	-5.21	113.91	121.20
1	L5	704	C	N1-C2-O2	5.16	121.99	118.90
1	L5	112	C	N3-C2-O2	-5.01	118.39	121.90

There are no chirality outliers.



There are no planarity outliers.

## 5.2 Too-close contacts

In the following table, the Non-H and H(model) columns list the number of non-hydrogen atoms and hydrogen atoms in the chain respectively. The H(added) column lists the number of hydrogen atoms added and optimized by MolProbity. The Clashes column lists the number of clashes within the asymmetric unit, whereas Symm-Clashes lists symmetry-related clashes.

Mol	Chain	Non-H	H(model)	H(added)	Clashes	Symm-Clashes
1	L5	13188	0	6679	52	0
All	All	13188	0	6679	52	0

The all-atom clashscore is defined as the number of clashes found per 1000 atoms (including hydrogen atoms). The all-atom clashscore for this structure is 3.

All (52) close contacts within the same asymmetric unit are listed below, sorted by their clash magnitude.

Atom-1	Atom-2	Interatomic distance (Å)	Clash overlap (Å)
1:L5:182:G:N2	1:L5:255:C:HO2'	1.85	0.73
1:L5:169:G:N2	1:L5:171:U:H3	1.87	0.73
1:L5:455:C:H6	1:L5:455:C:O5'	1.77	0.67
1:L5:73:A:H8	1:L5:73:A:H5''	1.61	0.66
1:L5:166:C:H6	1:L5:166:C:O5'	1.78	0.66
1:L5:256:G:H8	1:L5:256:G:O5'	1.79	0.64
1:L5:180:C:H6	1:L5:180:C:H3'	1.64	0.62
1:L5:182:G:N1	1:L5:255:C:O2'	2.32	0.62
1:L5:182:G:N2	1:L5:255:C:O2'	2.32	0.62
1:L5:168:C:H6	1:L5:168:C:O5'	1.83	0.60
1:L5:489:C:H42	1:L5:664:G:H1	1.53	0.55
1:L5:258:G:H2'	1:L5:259:C:C6	2.43	0.54
1:L5:180:C:H3'	1:L5:180:C:C6	2.43	0.54
1:L5:180:C:C6	1:L5:180:C:C3'	2.93	0.52
1:L5:702:U:O5'	1:L5:702:U:H6	1.93	0.52
1:L5:388:A:H1'	1:L5:403:G:N2	2.24	0.51
1:L5:138:G:H2'	1:L5:139:G:H8	1.76	0.51
1:L5:125:C:H2'	1:L5:126:C:C6	2.47	0.50
1:L5:270:U:H2'	1:L5:271:C:C6	2.47	0.50
1:L5:504:G:N3	1:L5:504:G:H2'	2.27	0.49
1:L5:461:G:H2'	1:L5:462:G:H8	1.77	0.49
1:L5:458:C:H2'	1:L5:459:C:C6	2.48	0.49
1:L5:73:A:H8	1:L5:73:A:C5'	2.23	0.48

*Continued on next page...*

Continued from previous page...

Atom-1	Atom-2	Interatomic distance (Å)	Clash overlap (Å)
1:L5:179:G:H8	1:L5:179:G:O5'	1.97	0.48
1:L5:139:G:H2'	1:L5:140:G:C8	2.48	0.47
1:L5:190:G:H2'	1:L5:191:G:H8	1.80	0.47
1:L5:178:C:H6	1:L5:178:C:H5''	1.80	0.47
1:L5:390:C:H42	1:L5:401:G:H1	1.63	0.46
1:L5:167:C:H6	1:L5:167:C:O5'	1.98	0.46
1:L5:254:G:H2'	1:L5:255:C:O5'	2.17	0.45
1:L5:467:U:H5	1:L5:686:A:H61	1.63	0.45
1:L5:158:A:H5''	1:L5:159:C:H2'	1.97	0.45
1:L5:256:G:OP2	1:L5:256:G:C8	2.70	0.45
1:L5:197:A:N3	1:L5:222:C:O2'	2.48	0.44
1:L5:685:C:OP2	1:L5:685:C:C6	2.70	0.44
1:L5:128:C:H6	1:L5:128:C:O5'	2.00	0.44
1:L5:370:U:H6	1:L5:370:U:O5'	2.00	0.44
1:L5:685:C:H4'	1:L5:686:A:C4	2.53	0.43
1:L5:254:G:C6	1:L5:255:C:C2	3.07	0.43
1:L5:73:A:C5'	1:L5:73:A:C8	3.02	0.43
1:L5:481:G:H1	1:L5:673:C:H42	1.67	0.42
1:L5:139:G:H2'	1:L5:140:G:H8	1.85	0.42
1:L5:502:C:OP2	1:L5:502:C:H4'	2.18	0.42
1:L5:131:C:O2	1:L5:138:G:N2	2.52	0.42
1:L5:120:A:H2'	1:L5:149:A:H61	1.85	0.41
1:L5:119:G:H5''	1:L5:119:G:H8	1.85	0.41
1:L5:490:C:H1'	1:L5:666:G:H1	1.84	0.41
1:L5:267:G:H2'	1:L5:268:G:H8	1.86	0.41
1:L5:223:G:H4'	1:L5:225:G:N7	2.36	0.41
1:L5:106:A:O2'	1:L5:335:A:N3	2.47	0.40
1:L5:512:U:H2'	1:L5:513:U:H4'	2.04	0.40
1:L5:182:G:C2	1:L5:255:C:O2'	2.60	0.40

There are no symmetry-related clashes.

## 5.3 Torsion angles [i](#)

### 5.3.1 Protein backbone [i](#)

There are no protein molecules in this entry.

### 5.3.2 Protein sidechains [i](#)

There are no protein molecules in this entry.

## 5.3.3 RNA ⓘ

Mol	Chain	Analysed	Backbone Outliers	Pucker Outliers
1	L5	612/3774 (16%)	168 (27%)	6 (0%)

All (168) RNA backbone outliers are listed below:

Mol	Chain	Res	Type
1	L5	2	G
1	L5	4	G
1	L5	6	C
1	L5	17	A
1	L5	25	A
1	L5	26	C
1	L5	30	C
1	L5	39	A
1	L5	42	A
1	L5	48	G
1	L5	56	A
1	L5	58	G
1	L5	59	A
1	L5	64	A
1	L5	65	A
1	L5	66	A
1	L5	67	C
1	L5	69	A
1	L5	72	C
1	L5	73	A
1	L5	74	G
1	L5	91	G
1	L5	98	A
1	L5	104	G
1	L5	106	A
1	L5	108	A
1	L5	109	G
1	L5	110	C
1	L5	117	C
1	L5	119	G
1	L5	120	A
1	L5	122	U
1	L5	126	C
1	L5	132	G
1	L5	133	C
1	L5	134	G

*Continued on next page...*

*Continued from previous page...*

<b>Mol</b>	<b>Chain</b>	<b>Res</b>	<b>Type</b>
1	L5	135	G
1	L5	136	C
1	L5	137	G
1	L5	139	G
1	L5	141	C
1	L5	142	G
1	L5	143	C
1	L5	144	G
1	L5	152	U
1	L5	159	C
1	L5	165	A
1	L5	172	C
1	L5	177	G
1	L5	180	C
1	L5	181	C
1	L5	183	C
1	L5	184	U
1	L5	185	C
1	L5	187	U
1	L5	188	G
1	L5	189	G
1	L5	200	U
1	L5	207	G
1	L5	209	U
1	L5	210	C
1	L5	212	A
1	L5	216	C
1	L5	218	A
1	L5	219	G
1	L5	225	G
1	L5	233	U
1	L5	234	G
1	L5	255	C
1	L5	256	G
1	L5	257	C
1	L5	259	C
1	L5	261	G
1	L5	262	G
1	L5	265	C
1	L5	269	G
1	L5	271	C
1	L5	274	C

*Continued on next page...*

*Continued from previous page...*

<b>Mol</b>	<b>Chain</b>	<b>Res</b>	<b>Type</b>
1	L5	276	C
1	L5	278	G
1	L5	280	G
1	L5	297	U
1	L5	306	A
1	L5	315	G
1	L5	316	U
1	L5	340	C
1	L5	341	G
1	L5	344	A
1	L5	345	C
1	L5	349	A
1	L5	370	U
1	L5	386	A
1	L5	387	G
1	L5	388	A
1	L5	398	A2M
1	L5	407	A
1	L5	408	A
1	L5	409	G
1	L5	410	A
1	L5	411	G
1	L5	412	G
1	L5	413	G
1	L5	417	G
1	L5	418	A
1	L5	440	U
1	L5	449	C
1	L5	450	G
1	L5	452	A
1	L5	453	G
1	L5	454	U
1	L5	456	C
1	L5	457	G
1	L5	461	G
1	L5	465	G
1	L5	467	U
1	L5	484	U
1	L5	485	C
1	L5	486	C
1	L5	489	C
1	L5	493	G

*Continued on next page...*

*Continued from previous page...*

<b>Mol</b>	<b>Chain</b>	<b>Res</b>	<b>Type</b>
1	L5	494	U
1	L5	496	G
1	L5	497	G
1	L5	498	C
1	L5	499	G
1	L5	500	G
1	L5	501	C
1	L5	502	C
1	L5	503	C
1	L5	505	G
1	L5	509	A
1	L5	510	U
1	L5	511	C
1	L5	512	U
1	L5	513	U
1	L5	514	U
1	L5	515	C
1	L5	516	C
1	L5	517	C
1	L5	518	G
1	L5	519	C
1	L5	643	C
1	L5	644	G
1	L5	646	G
1	L5	653	U
1	L5	654	C
1	L5	656	C
1	L5	657	C
1	L5	659	G
1	L5	665	C
1	L5	666	G
1	L5	667	A
1	L5	668	C
1	L5	670	G
1	L5	673	C
1	L5	676	C
1	L5	685	C
1	L5	686	A
1	L5	687	U
1	L5	691	C
1	L5	693	C
1	L5	696	C

*Continued on next page...*

Continued from previous page...

Mol	Chain	Res	Type
1	L5	697	G
1	L5	701	G
1	L5	703	G
1	L5	704	C
1	L5	708	G
1	L5	731	G

All (6) RNA pucker outliers are listed below:

Mol	Chain	Res	Type
1	L5	58	G
1	L5	73	A
1	L5	385	A
1	L5	406	C
1	L5	417	G
1	L5	504	G

## 5.4 Non-standard residues in protein, DNA, RNA chains [i](#)

3 non-standard protein/DNA/RNA residues are modelled in this entry.

In the following table, the Counts columns list the number of bonds (or angles) for which Mogul statistics could be retrieved, the number of bonds (or angles) that are observed in the model and the number of bonds (or angles) that are defined in the Chemical Component Dictionary. The Link column lists molecule types, if any, to which the group is linked. The Z score for a bond length (or angle) is the number of standard deviations the observed value is removed from the expected value. A bond length (or angle) with  $|Z| > 2$  is considered an outlier worth inspection. RMSZ is the root-mean-square of all Z scores of the bond lengths (or angles).

Mol	Type	Chain	Res	Link	Bond lengths			Bond angles		
					Counts	RMSZ	# Z  > 2	Counts	RMSZ	# Z  > 2
1	OMG	L5	373	1	18,26,27	1.00	1 (5%)	19,38,41	1.16	2 (10%)
1	2MG	L5	729	1	18,26,27	0.90	1 (5%)	16,38,41	1.16	2 (12%)
1	A2M	L5	398	1	18,25,26	1.02	1 (5%)	18,36,39	1.27	2 (11%)

In the following table, the Chirals column lists the number of chiral outliers, the number of chiral centers analysed, the number of these observed in the model and the number defined in the Chemical Component Dictionary. Similar counts are reported in the Torsion and Rings columns. '-' means no outliers of that kind were identified.

Mol	Type	Chain	Res	Link	Chirals	Torsions	Rings
1	OMG	L5	373	1	-	0/5/27/28	0/3/3/3

Continued on next page...

Continued from previous page...

Mol	Type	Chain	Res	Link	Chirals	Torsions	Rings
1	2MG	L5	729	1	-	3/5/27/28	0/3/3/3
1	A2M	L5	398	1	-	2/5/27/28	0/3/3/3

All (3) bond length outliers are listed below:

Mol	Chain	Res	Type	Atoms	Z	Observed(Å)	Ideal(Å)
1	L5	373	OMG	C6-N1	-2.87	1.33	1.37
1	L5	729	2MG	C6-N1	-2.53	1.34	1.37
1	L5	398	A2M	C5-C4	2.30	1.47	1.40

All (6) bond angle outliers are listed below:

Mol	Chain	Res	Type	Atoms	Z	Observed(°)	Ideal(°)
1	L5	398	A2M	N3-C2-N1	-3.41	123.36	128.68
1	L5	398	A2M	C4-C5-N7	-2.77	106.52	109.40
1	L5	373	OMG	C5-C6-N1	2.53	118.42	113.95
1	L5	729	2MG	C5-C6-N1	2.47	118.31	113.95
1	L5	729	2MG	C8-N7-C5	2.33	107.43	102.99
1	L5	373	OMG	C8-N7-C5	2.29	107.34	102.99

There are no chirality outliers.

All (5) torsion outliers are listed below:

Mol	Chain	Res	Type	Atoms
1	L5	729	2MG	N1-C2-N2-CM2
1	L5	729	2MG	N3-C2-N2-CM2
1	L5	398	A2M	O4'-C4'-C5'-O5'
1	L5	398	A2M	C3'-C4'-C5'-O5'
1	L5	729	2MG	O4'-C4'-C5'-O5'

There are no ring outliers.

No monomer is involved in short contacts.

## 5.5 Carbohydrates

There are no monosaccharides in this entry.



## 5.6 Ligand geometry [i](#)

There are no ligands in this entry.

## 5.7 Other polymers [i](#)

There are no such residues in this entry.

## 5.8 Polymer linkage issues [i](#)

The following chains have linkage breaks:

Mol	Chain	Number of breaks
1	L5	1

All chain breaks are listed below:

Model	Chain	Residue-1	Atom-1	Residue-2	Atom-2	Distance (Å)
1	L5	519:C	O3'	642:G	P	17.50

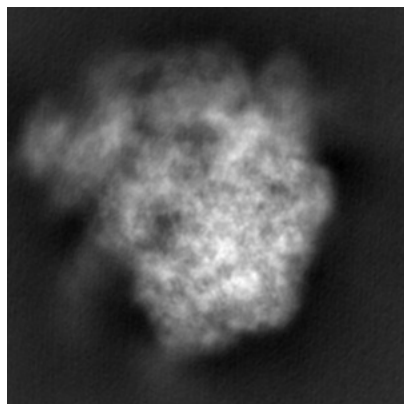
## 6 Map visualisation [i](#)

This section contains visualisations of the EMDB entry EMD-14704. These allow visual inspection of the internal detail of the map and identification of artifacts.

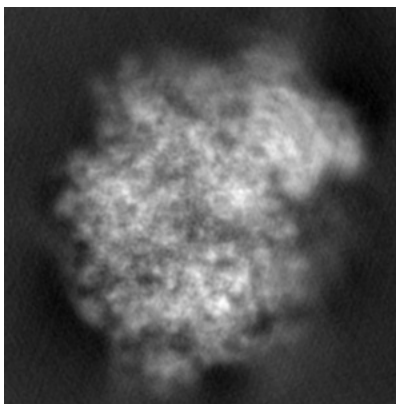
Images derived from a raw map, generated by summing the deposited half-maps, are presented below the corresponding image components of the primary map to allow further visual inspection and comparison with those of the primary map.

### 6.1 Orthogonal projections [i](#)

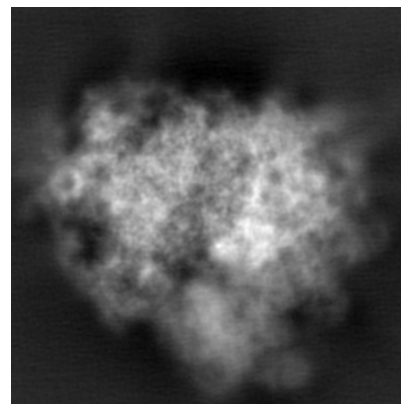
#### 6.1.1 Primary map



X

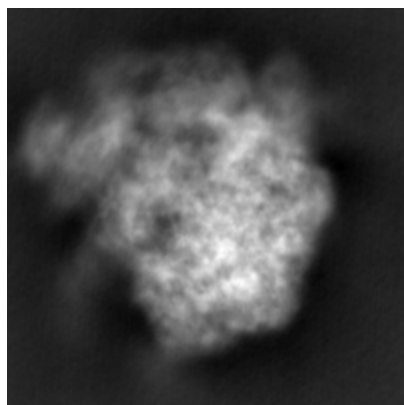


Y

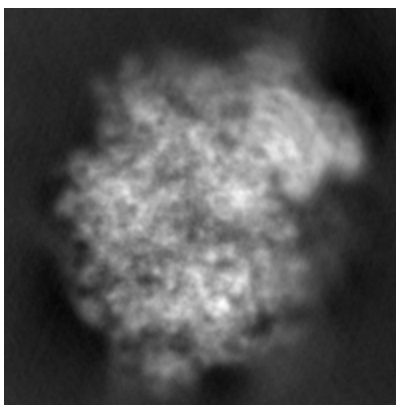


Z

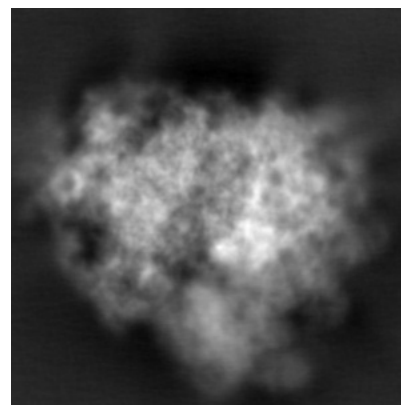
#### 6.1.2 Raw map



X



Y

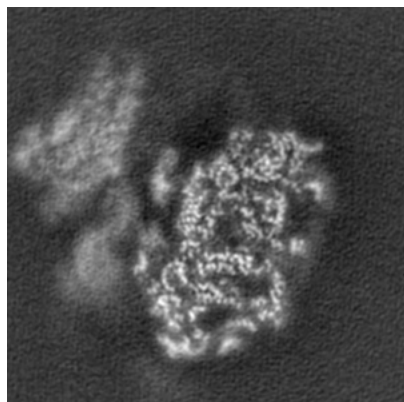


Z

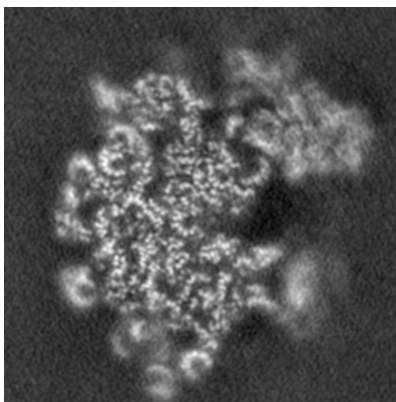
The images above show the map projected in three orthogonal directions.

## 6.2 Central slices [i](#)

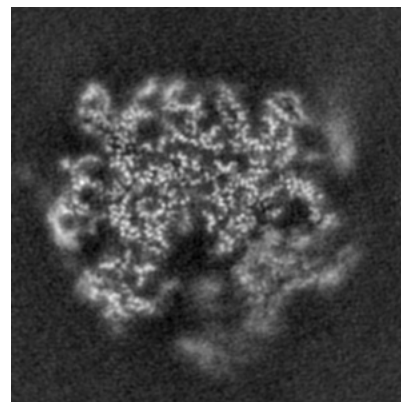
### 6.2.1 Primary map



X Index: 150

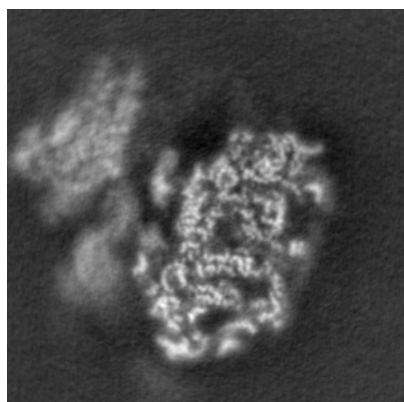


Y Index: 150

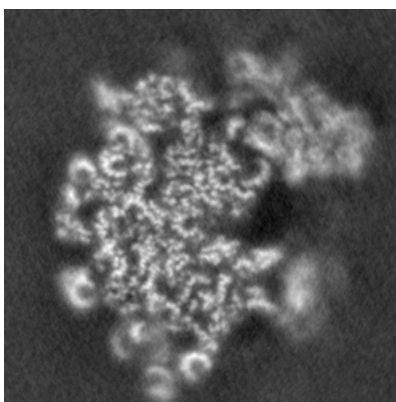


Z Index: 150

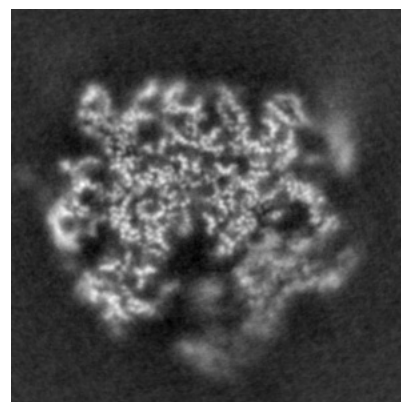
### 6.2.2 Raw map



X Index: 150



Y Index: 150

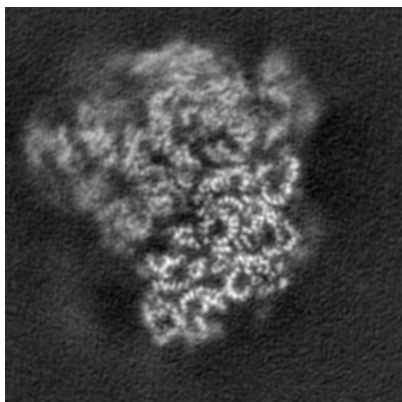


Z Index: 150

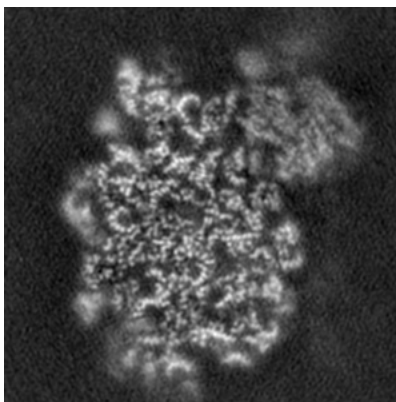
The images above show central slices of the map in three orthogonal directions.

## 6.3 Largest variance slices [i](#)

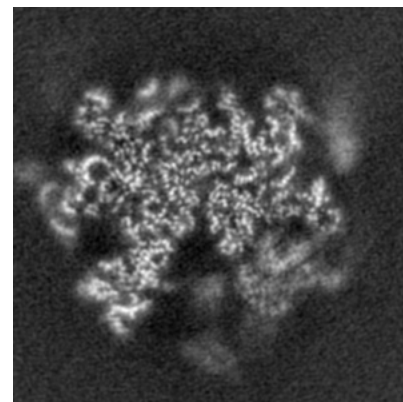
### 6.3.1 Primary map



X Index: 186

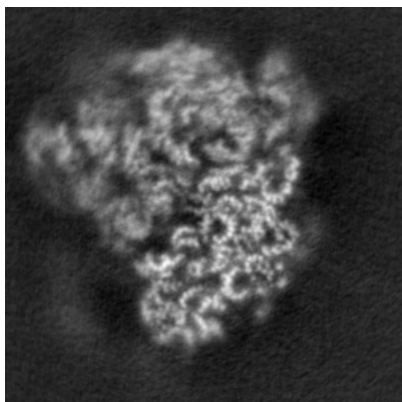


Y Index: 169

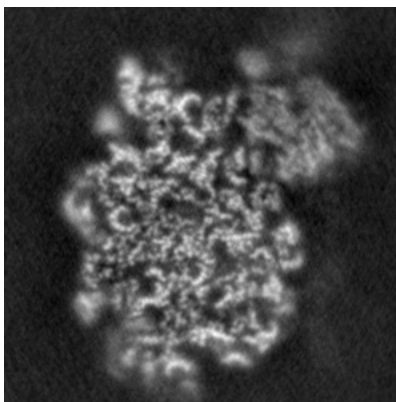


Z Index: 145

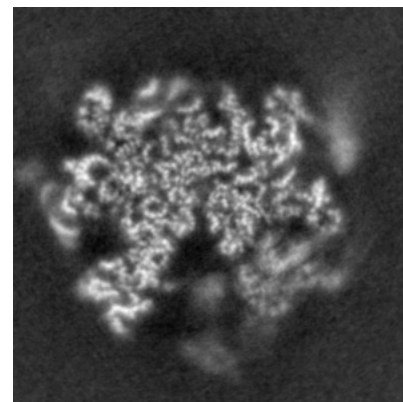
### 6.3.2 Raw map



X Index: 185



Y Index: 169



Z Index: 146

The images above show the largest variance slices of the map in three orthogonal directions.

## 6.4 Orthogonal surface views [i](#)

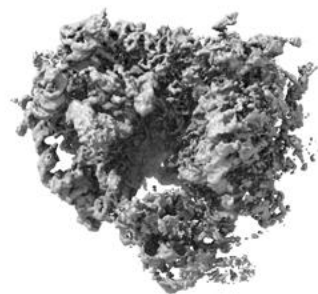
### 6.4.1 Primary map



X



Y



Z

The images above show the 3D surface view of the map at the recommended contour level 0.03. These images, in conjunction with the slice images, may facilitate assessment of whether an appropriate contour level has been provided.

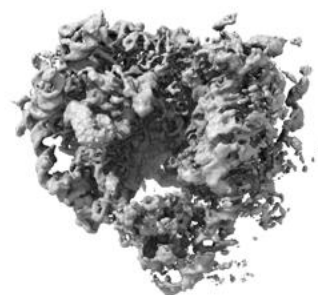
### 6.4.2 Raw map



X



Y



Z

These images show the 3D surface of the raw map. The raw map's contour level was selected so that its surface encloses the same volume as the primary map does at its recommended contour level.

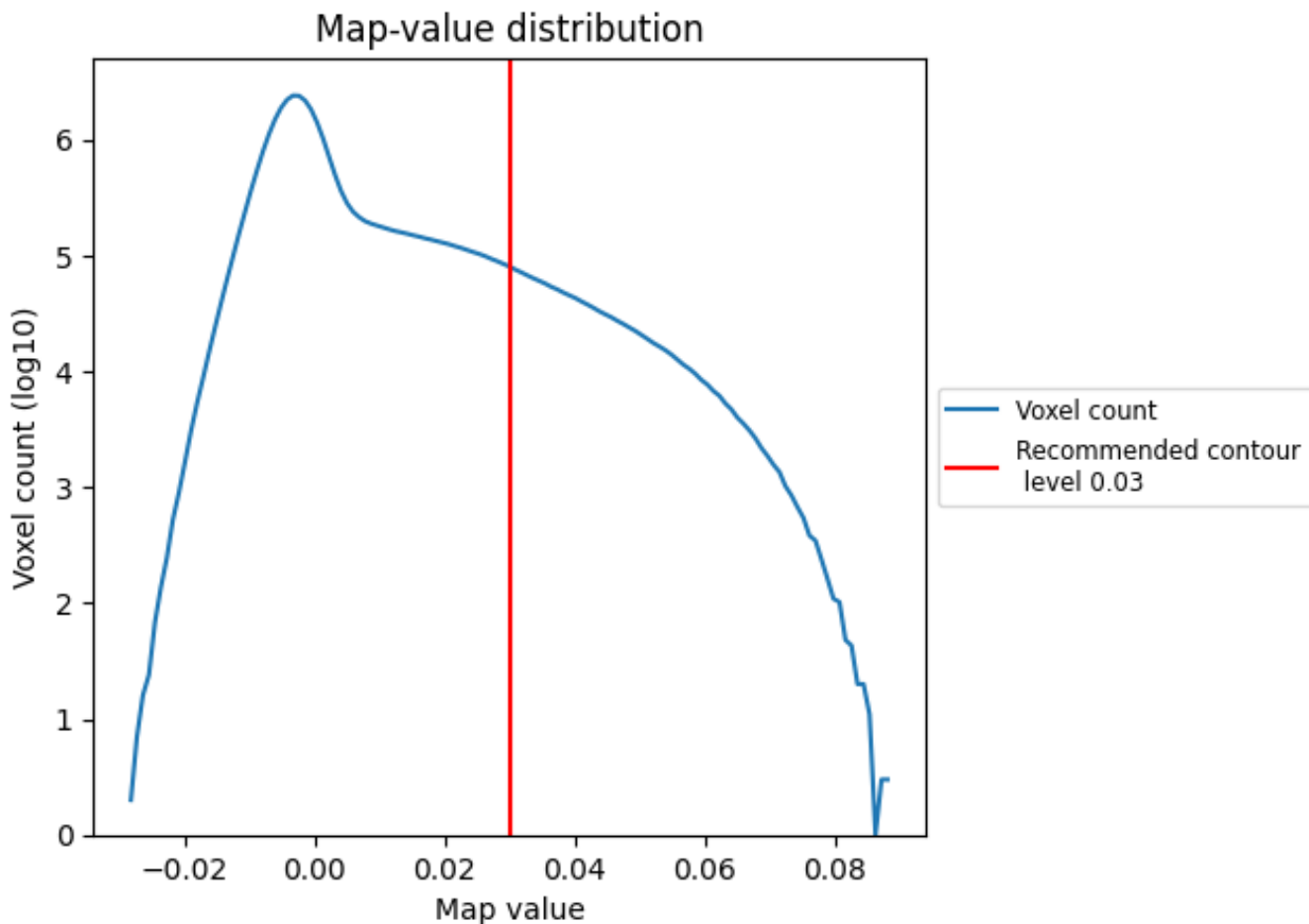
## 6.5 Mask visualisation [i](#)

This section was not generated. No masks/segmentation were deposited.

## 7 Map analysis [i](#)

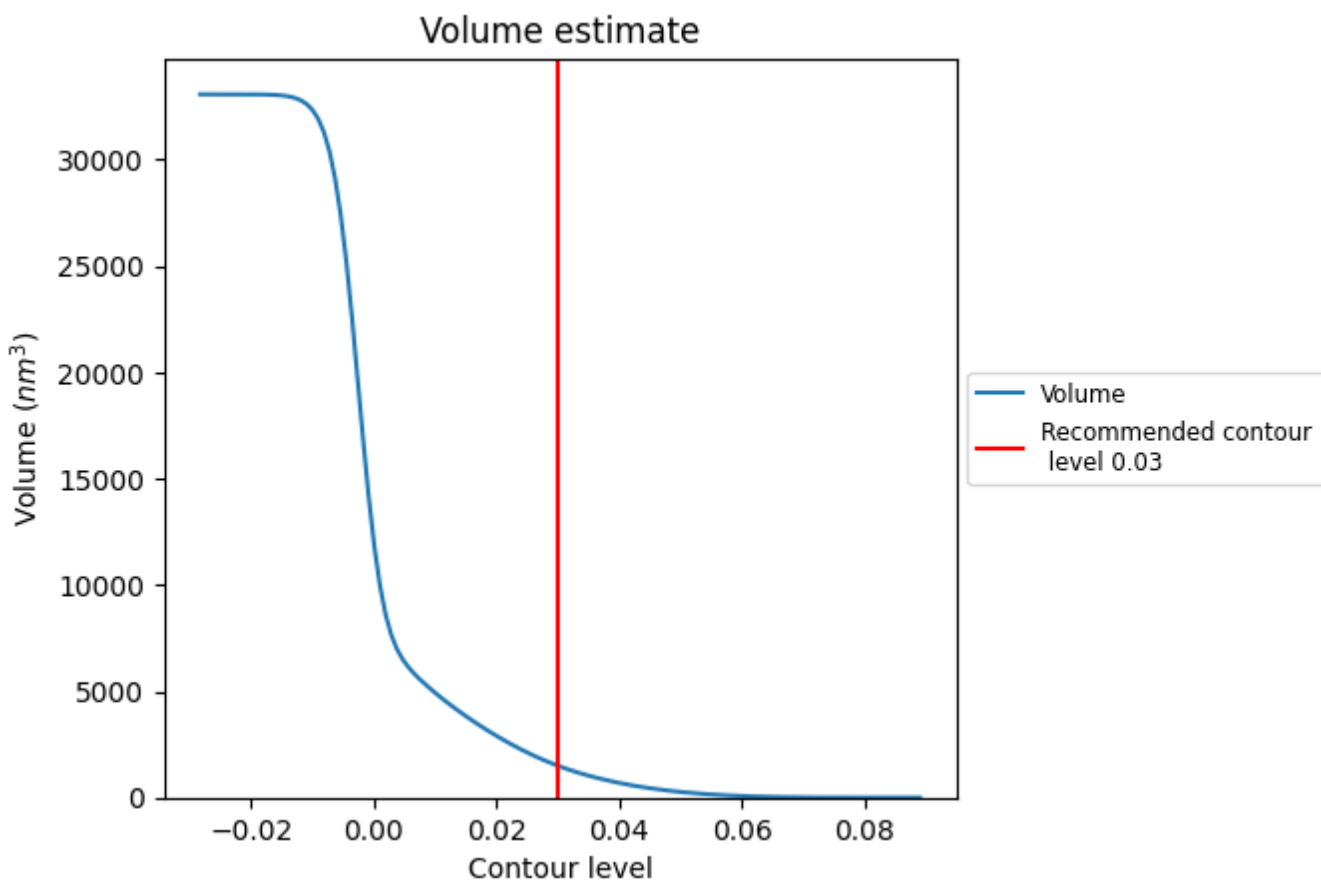
This section contains the results of statistical analysis of the map.

### 7.1 Map-value distribution [i](#)



The map-value distribution is plotted in 128 intervals along the x-axis. The y-axis is logarithmic. A spike in this graph at zero usually indicates that the volume has been masked.

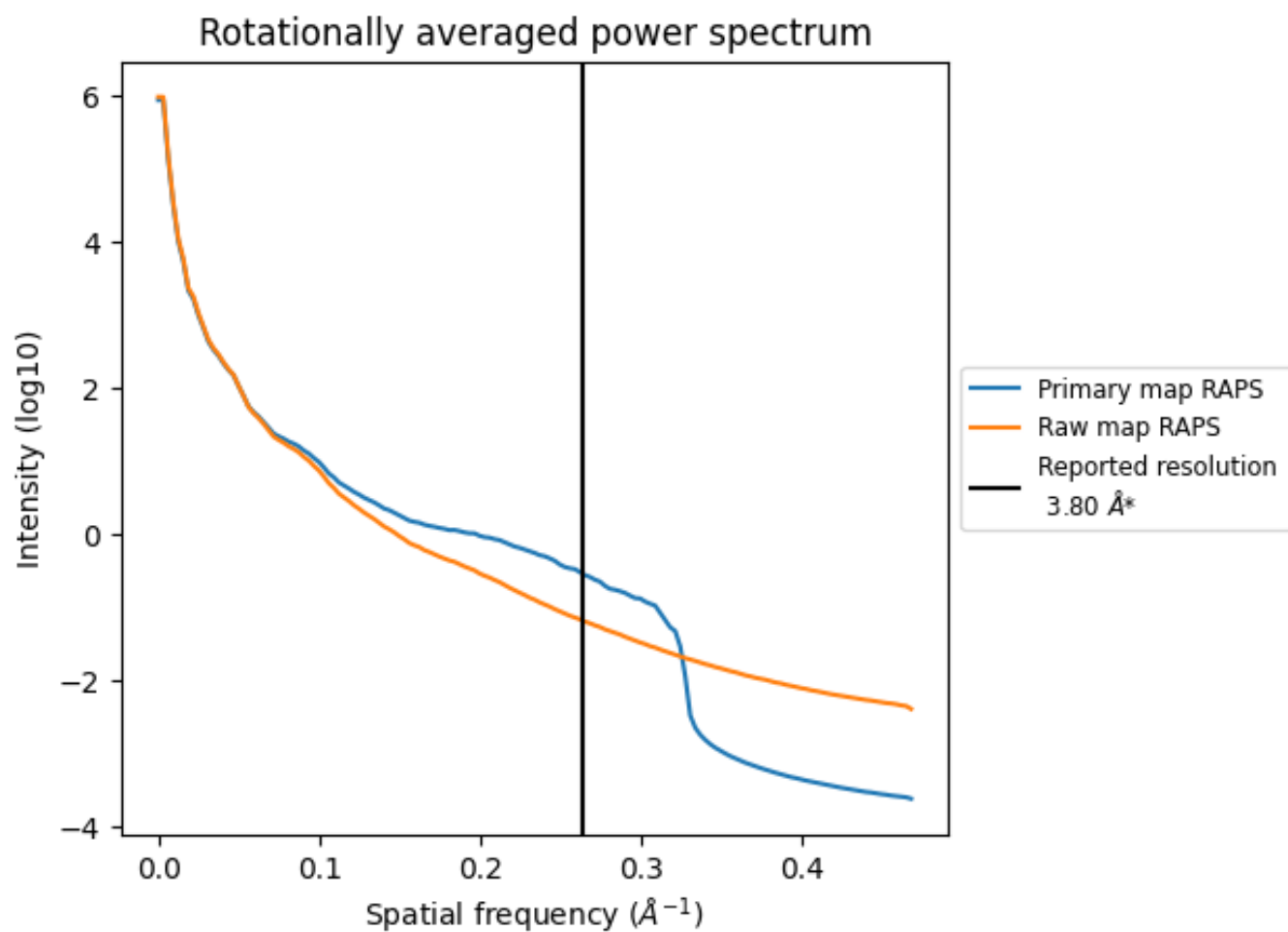
## 7.2 Volume estimate [i](#)



The volume at the recommended contour level is 1499 nm<sup>3</sup>; this corresponds to an approximate mass of 1354 kDa.

The volume estimate graph shows how the enclosed volume varies with the contour level. The recommended contour level is shown as a vertical line and the intersection between the line and the curve gives the volume of the enclosed surface at the given level.

### 7.3 Rotationally averaged power spectrum i



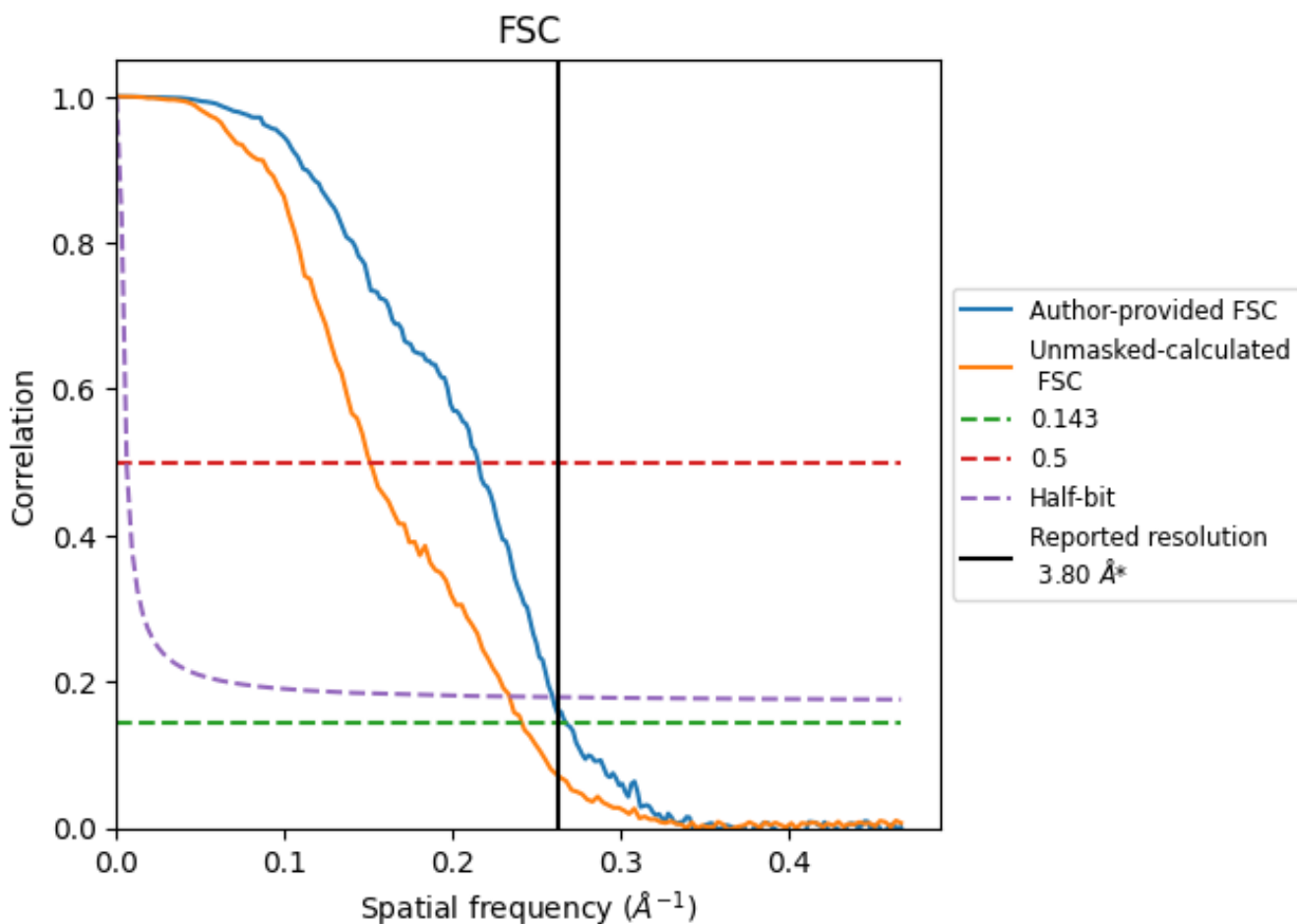
\*Reported resolution corresponds to spatial frequency of 0.263 Å<sup>-1</sup>



## 8 Fourier-Shell correlation [i](#)

Fourier-Shell Correlation (FSC) is the most commonly used method to estimate the resolution of single-particle and subtomogram-averaged maps. The shape of the curve depends on the imposed symmetry, mask and whether or not the two 3D reconstructions used were processed from a common reference. The reported resolution is shown as a black line. A curve is displayed for the half-bit criterion in addition to lines showing the 0.143 gold standard cut-off and 0.5 cut-off.

### 8.1 FSC [i](#)



\*Reported resolution corresponds to spatial frequency of 0.263 Å<sup>-1</sup>

## 8.2 Resolution estimates [i](#)

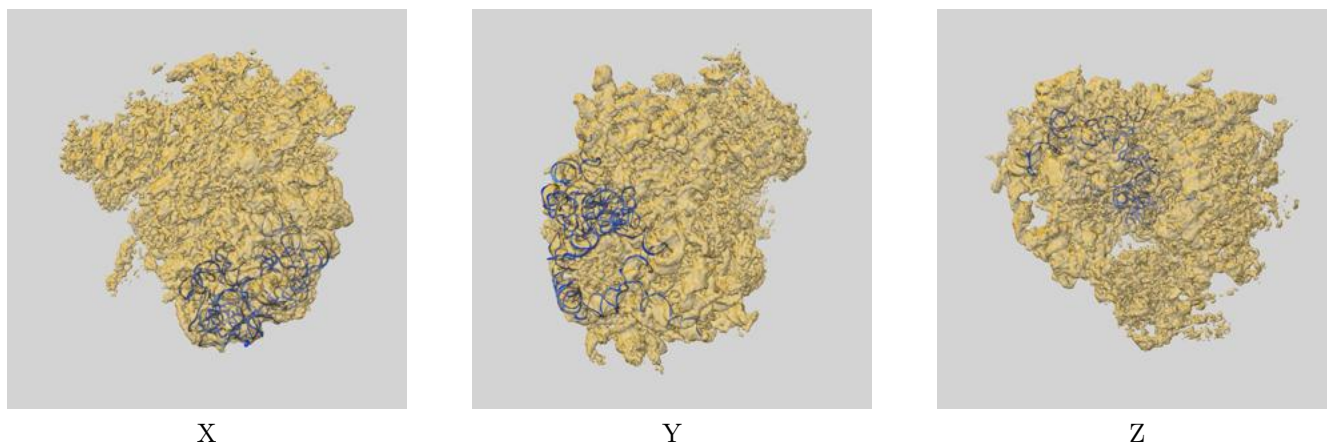
Resolution estimate (Å)	Estimation criterion (FSC cut-off)		
	0.143	0.5	Half-bit
Reported by author	3.80	-	-
Author-provided FSC curve	3.73	4.64	3.84
Unmasked-calculated*	4.14	6.62	4.27

\*Resolution estimate based on FSC curve calculated by comparison of deposited half-maps.

## 9 Map-model fit [i](#)

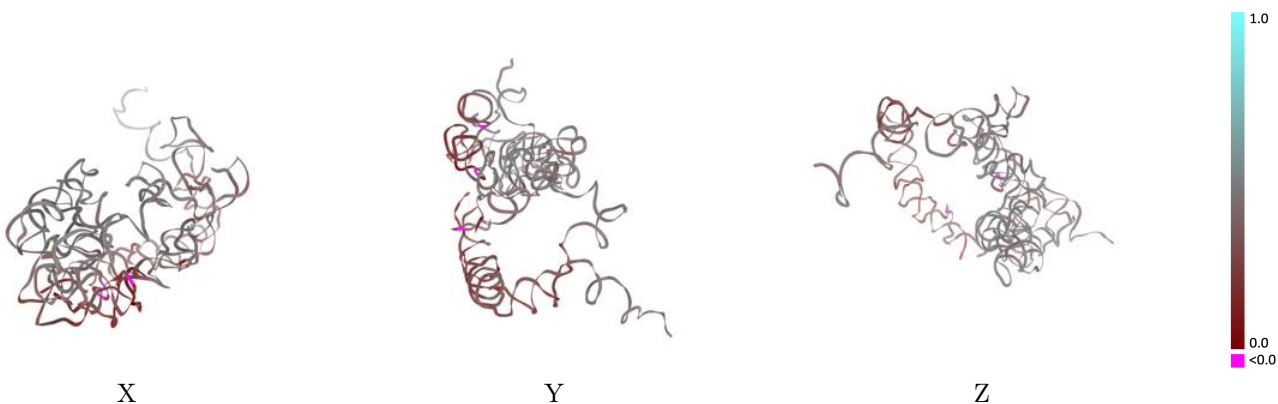
This section contains information regarding the fit between EMDB map EMD-14704 and PDB model 7ZFW. Per-residue inclusion information can be found in section [3](#) on page [4](#).

### 9.1 Map-model overlay [i](#)



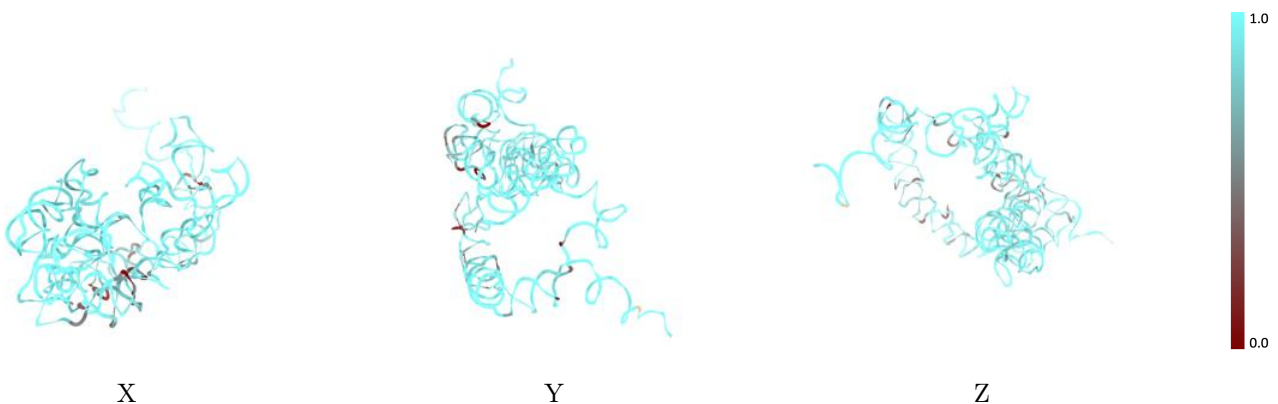
The images above show the 3D surface view of the map at the recommended contour level 0.03 at 50% transparency in yellow overlaid with a ribbon representation of the model coloured in blue. These images allow for the visual assessment of the quality of fit between the atomic model and the map.

## 9.2 Q-score mapped to coordinate model [\(i\)](#)



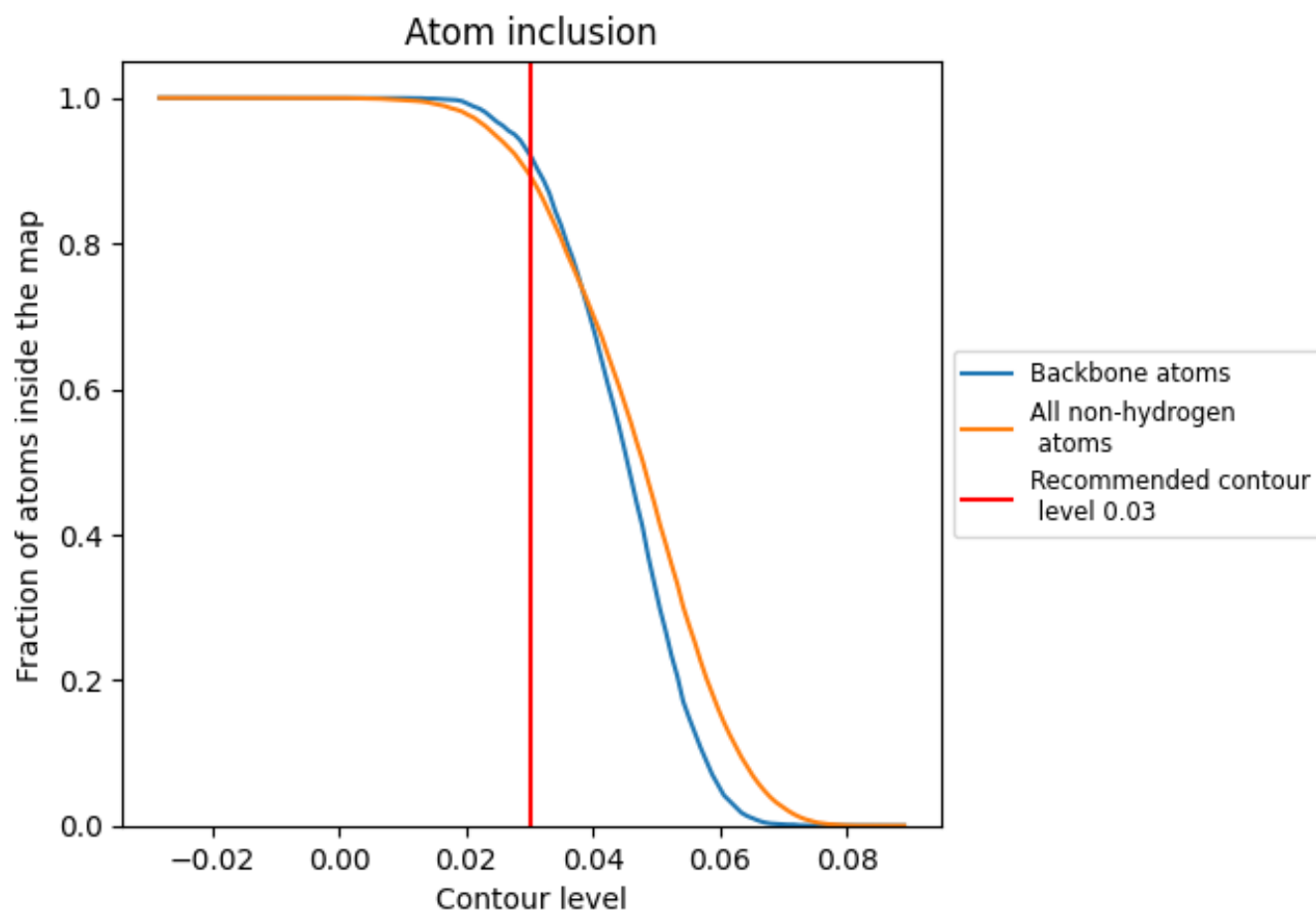
The images above show the model with each residue coloured according to its Q-score. This shows their resolvability in the map with higher Q-score values reflecting better resolvability. Please note: Q-score is calculating the resolvability of atoms, and thus high values are only expected at resolutions at which atoms can be resolved. Low Q-score values may therefore be expected for many entries.

## 9.3 Atom inclusion mapped to coordinate model [\(i\)](#)



The images above show the model with each residue coloured according to its atom inclusion. This shows to what extent they are inside the map at the recommended contour level (0.03).


## 9.4 Atom inclusion [i](#)



At the recommended contour level, 92% of all backbone atoms, 89% of all non-hydrogen atoms, are inside the map.

## 9.5 Map-model fit summary [i](#)

The table lists the average atom inclusion at the recommended contour level (0.03) and Q-score for the entire model and for each chain.

Chain	Atom inclusion	Q-score
All	 0.8944	 0.3800
L5	 0.8944	 0.3800

