



wwPDB X-ray Structure Validation Summary Report ⓘ

Nov 14, 2023 – 03:14 PM JST

PDB ID : 5ZIE
Title : Crystal structure of Legionella pneumophila aminopeptidase A in complex with aspartic acid
Authors : Marapaka, A.K.; Addlagatta, A.
Deposited on : 2018-03-14
Resolution : 2.00 Å(reported)

This is a wwPDB X-ray Structure Validation Summary Report for a publicly released PDB entry.

We welcome your comments at validation@mail.wwpdb.org

A user guide is available at

<https://www.wwpdb.org/validation/2017/XrayValidationReportHelp>

with specific help available everywhere you see the ⓘ symbol.

The types of validation reports are described at

<http://www.wwpdb.org/validation/2017/FAQs#types>.

The following versions of software and data (see [references ⓘ](#)) were used in the production of this report:

MolProbity : 4.02b-467
Mogul : 1.8.5 (274361), CSD as541be (2020)
Xtriage (Phenix) : 1.13
EDS : 2.36
Percentile statistics : 20191225.v01 (using entries in the PDB archive December 25th 2019)
Refmac : 5.8.0158
CCP4 : 7.0.044 (Gargrove)
Ideal geometry (proteins) : Engh & Huber (2001)
Ideal geometry (DNA, RNA) : Parkinson et al. (1996)
Validation Pipeline (wwPDB-VP) : 2.36

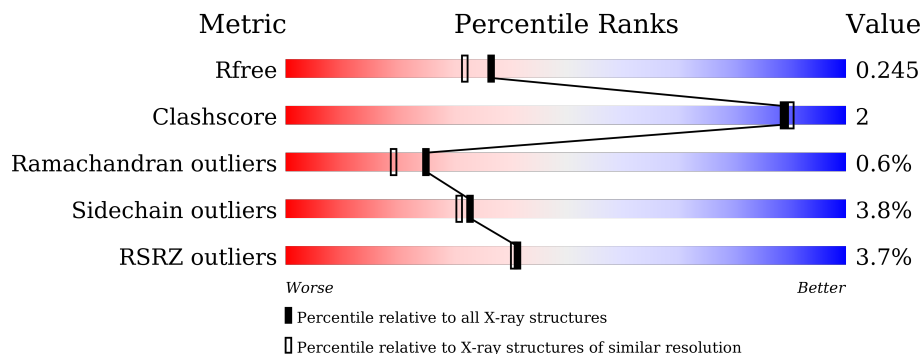
1 Overall quality at a glance

The following experimental techniques were used to determine the structure:

X-RAY DIFFRACTION

The reported resolution of this entry is 2.00 Å.

Percentile scores (ranging between 0-100) for global validation metrics of the entry are shown in the following graphic. The table shows the number of entries on which the scores are based.



Metric	Whole archive (#Entries)	Similar resolution (#Entries, resolution range(Å))
R_{free}	130704	8085 (2.00-2.00)
Clashscore	141614	9178 (2.00-2.00)
Ramachandran outliers	138981	9054 (2.00-2.00)
Sidechain outliers	138945	9053 (2.00-2.00)
RSRZ outliers	127900	7900 (2.00-2.00)

The table below summarises the geometric issues observed across the polymeric chains and their fit to the electron density. The red, orange, yellow and green segments of the lower bar indicate the fraction of residues that contain outliers for ≥ 3 , 2, 1 and 0 types of geometric quality criteria respectively. A grey segment represents the fraction of residues that are not modelled. The numeric value for each fraction is indicated below the corresponding segment, with a dot representing fractions $\leq 5\%$. The upper red bar (where present) indicates the fraction of residues that have poor fit to the electron density. The numeric value is given above the bar.

Mol	Chain	Length	Quality of chain
1	A	921	 4% 83% 9% • 8%
1	B	921	 2% 84% 7% • 8%

2 Entry composition [i](#)

There are 3 unique types of molecules in this entry. The entry contains 13907 atoms, of which 0 are hydrogens and 0 are deuteriums.

In the tables below, the ZeroOcc column contains the number of atoms modelled with zero occupancy, the AltConf column contains the number of residues with at least one atom in alternate conformation and the Trace column contains the number of residues modelled with at most 2 atoms.

- Molecule 1 is a protein called Aminopeptidase N.

Mol	Chain	Residues	Atoms					ZeroOcc	AltConf	Trace
			Total	C	N	O	S			
1	A	850	6836	4384	1117	1307	28	0	5	0
1	B	850	6828	4380	1113	1308	27	0	4	0

There are 42 discrepancies between the modelled and reference sequences:

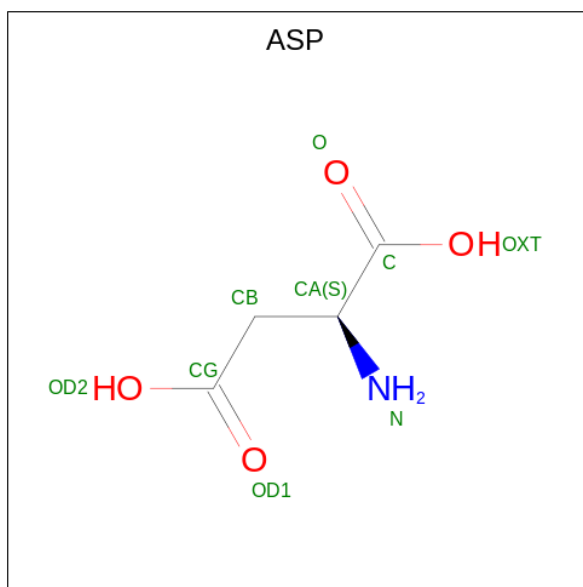
Chain	Residue	Modelled	Actual	Comment	Reference
A	-20	MET	-	initiating methionine	UNP Q5ZVE3
A	-19	GLY	-	expression tag	UNP Q5ZVE3
A	-18	SER	-	expression tag	UNP Q5ZVE3
A	-17	SER	-	expression tag	UNP Q5ZVE3
A	-16	HIS	-	expression tag	UNP Q5ZVE3
A	-15	HIS	-	expression tag	UNP Q5ZVE3
A	-14	HIS	-	expression tag	UNP Q5ZVE3
A	-13	HIS	-	expression tag	UNP Q5ZVE3
A	-12	HIS	-	expression tag	UNP Q5ZVE3
A	-11	HIS	-	expression tag	UNP Q5ZVE3
A	-10	SER	-	expression tag	UNP Q5ZVE3
A	-9	SER	-	expression tag	UNP Q5ZVE3
A	-8	GLY	-	expression tag	UNP Q5ZVE3
A	-7	LEU	-	expression tag	UNP Q5ZVE3
A	-6	VAL	-	expression tag	UNP Q5ZVE3
A	-5	PRO	-	expression tag	UNP Q5ZVE3
A	-4	ARG	-	expression tag	UNP Q5ZVE3
A	-3	GLY	-	expression tag	UNP Q5ZVE3
A	-2	SER	-	expression tag	UNP Q5ZVE3
A	-1	HIS	-	expression tag	UNP Q5ZVE3
A	0	MET	-	expression tag	UNP Q5ZVE3
B	-20	MET	-	initiating methionine	UNP Q5ZVE3
B	-19	GLY	-	expression tag	UNP Q5ZVE3
B	-18	SER	-	expression tag	UNP Q5ZVE3
B	-17	SER	-	expression tag	UNP Q5ZVE3

Continued on next page...

Continued from previous page...

Chain	Residue	Modelled	Actual	Comment	Reference
B	-16	HIS	-	expression tag	UNP Q5ZVE3
B	-15	HIS	-	expression tag	UNP Q5ZVE3
B	-14	HIS	-	expression tag	UNP Q5ZVE3
B	-13	HIS	-	expression tag	UNP Q5ZVE3
B	-12	HIS	-	expression tag	UNP Q5ZVE3
B	-11	HIS	-	expression tag	UNP Q5ZVE3
B	-10	SER	-	expression tag	UNP Q5ZVE3
B	-9	SER	-	expression tag	UNP Q5ZVE3
B	-8	GLY	-	expression tag	UNP Q5ZVE3
B	-7	LEU	-	expression tag	UNP Q5ZVE3
B	-6	VAL	-	expression tag	UNP Q5ZVE3
B	-5	PRO	-	expression tag	UNP Q5ZVE3
B	-4	ARG	-	expression tag	UNP Q5ZVE3
B	-3	GLY	-	expression tag	UNP Q5ZVE3
B	-2	SER	-	expression tag	UNP Q5ZVE3
B	-1	HIS	-	expression tag	UNP Q5ZVE3
B	0	MET	-	expression tag	UNP Q5ZVE3

- Molecule 2 is ASPARTIC ACID (three-letter code: ASP) (formula: C₄H₇NO₄).



Mol	Chain	Residues	Atoms				ZeroOcc	AltConf
2	A	1	Total	C	N	O	0	0
			9	4	1	4		
2	B	1	Total	C	N	O	0	0
			9	4	1	4		

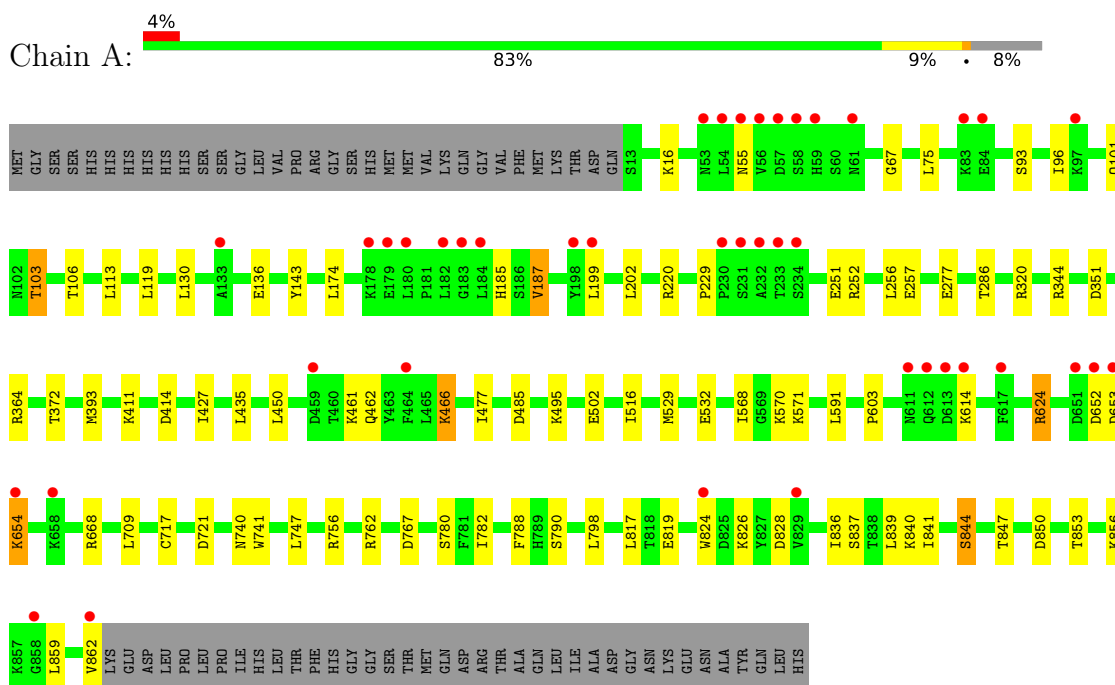
- Molecule 3 is water.

Mol	Chain	Residues	Atoms		ZeroOcc	AltConf
3	A	103	Total 103	O 103	0	0
3	B	122	Total 122	O 122	0	0

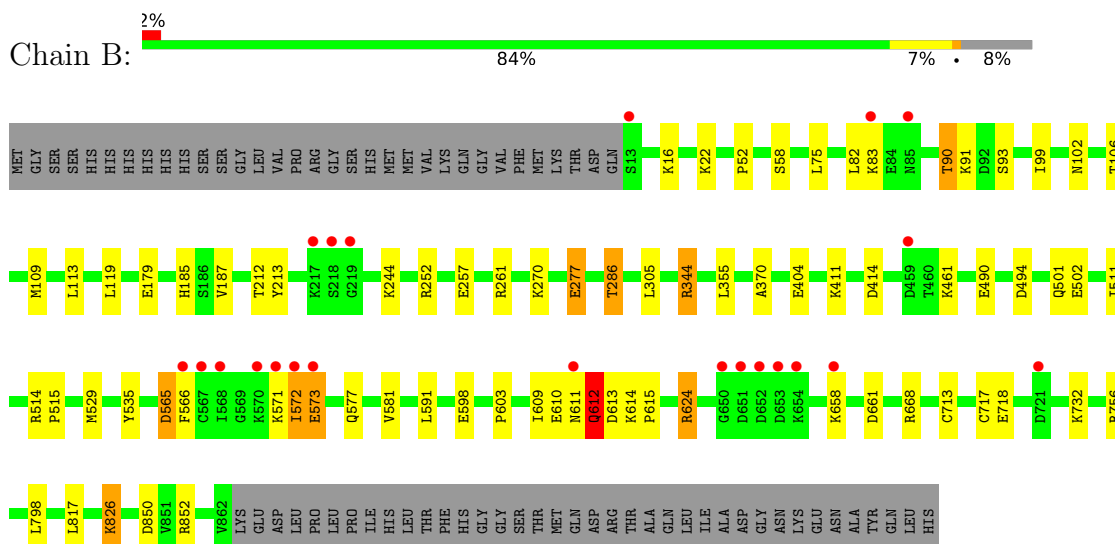
3 Residue-property plots [i](#)

These plots are drawn for all protein, RNA, DNA and oligosaccharide chains in the entry. The first graphic for a chain summarises the proportions of the various outlier classes displayed in the second graphic. The second graphic shows the sequence view annotated by issues in geometry and electron density. Residues are color-coded according to the number of geometric quality criteria for which they contain at least one outlier: green = 0, yellow = 1, orange = 2 and red = 3 or more. A red dot above a residue indicates a poor fit to the electron density ($RSRZ > 2$). Stretches of 2 or more consecutive residues without any outlier are shown as a green connector. Residues present in the sample, but not in the model, are shown in grey.

- Molecule 1: Aminopeptidase N



- Molecule 1: Aminopeptidase N



4 Data and refinement statistics

Property	Value	Source
Space group	P 1 21 1	Depositor
Cell constants a, b, c, α , β , γ	70.95Å 102.51Å 111.24Å 90.00° 90.52° 90.00°	Depositor
Resolution (Å)	33.89 – 2.00 33.89 – 2.00	Depositor EDS
% Data completeness (in resolution range)	99.3 (33.89-2.00) 99.4 (33.89-2.00)	Depositor EDS
R_{merge}	0.06	Depositor
R_{sym}	(Not available)	Depositor
$\langle I/\sigma(I) \rangle$ ¹	3.13 (at 2.00Å)	Xtrriage
Refinement program	REFMAC 5.8.0135	Depositor
R, R_{free}	0.178 , 0.240 0.186 , 0.245	Depositor DCC
R_{free} test set	5473 reflections (5.14%)	wwPDB-VP
Wilson B-factor (Å ²)	37.2	Xtrriage
Anisotropy	0.025	Xtrriage
Bulk solvent k_{sol} (e/Å ³), B_{sol} (Å ²)	0.38 , 44.0	EDS
L-test for twinning ²	$\langle L \rangle = 0.50$, $\langle L^2 \rangle = 0.34$	Xtrriage
Estimated twinning fraction	0.017 for h,-k,-l	Xtrriage
F_o, F_c correlation	0.96	EDS
Total number of atoms	13907	wwPDB-VP
Average B, all atoms (Å ²)	43.0	wwPDB-VP

Xtrriage's analysis on translational NCS is as follows: *The largest off-origin peak in the Patterson function is 4.45% of the height of the origin peak. No significant pseudotranslation is detected.*

¹Intensities estimated from amplitudes.

²Theoretical values of $\langle |L| \rangle$, $\langle L^2 \rangle$ for acentric reflections are 0.5, 0.333 respectively for untwinned datasets, and 0.375, 0.2 for perfectly twinned datasets.

5 Model quality [i](#)

5.1 Standard geometry [i](#)

The Z score for a bond length (or angle) is the number of standard deviations the observed value is removed from the expected value. A bond length (or angle) with $|Z| > 5$ is considered an outlier worth inspection. RMSZ is the root-mean-square of all Z scores of the bond lengths (or angles).

Mol	Chain	Bond lengths		Bond angles	
		RMSZ	# $ Z > 5$	RMSZ	# $ Z > 5$
1	A	0.83	2/6987 (0.0%)	0.92	22/9459 (0.2%)
1	B	0.86	0/6979	0.94	20/9449 (0.2%)
All	All	0.85	2/13966 (0.0%)	0.93	42/18908 (0.2%)

Chiral center outliers are detected by calculating the chiral volume of a chiral center and verifying if the center is modelled as a planar moiety or with the opposite hand. A planarity outlier is detected by checking planarity of atoms in a peptide group, atoms in a mainchain group or atoms of a sidechain that are expected to be planar.

Mol	Chain	#Chirality outliers	#Planarity outliers
1	A	0	1

All (2) bond length outliers are listed below:

Mol	Chain	Res	Type	Atoms	Z	Observed(Å)	Ideal(Å)
1	A	741	TRP	CB-CG	-5.71	1.40	1.50
1	A	136	GLU	CD-OE1	-5.11	1.20	1.25

The worst 5 of 42 bond angle outliers are listed below:

Mol	Chain	Res	Type	Atoms	Z	Observed(°)	Ideal(°)
1	B	668	ARG	NE-CZ-NH2	-14.62	112.99	120.30
1	A	668	ARG	NE-CZ-NH2	-13.50	113.55	120.30
1	A	668	ARG	NE-CZ-NH1	11.30	125.95	120.30
1	B	668	ARG	NE-CZ-NH1	11.21	125.91	120.30
1	B	624	ARG	NE-CZ-NH1	9.09	124.84	120.30

There are no chirality outliers.

All (1) planarity outliers are listed below:

Mol	Chain	Res	Type	Group
1	A	229	PRO	Peptide

5.2 Too-close contacts [i](#)

In the following table, the Non-H and H(model) columns list the number of non-hydrogen atoms and hydrogen atoms in the chain respectively. The H(added) column lists the number of hydrogen atoms added and optimized by MolProbity. The Clashes column lists the number of clashes within the asymmetric unit, whereas Symm-Clashes lists symmetry-related clashes.

Mol	Chain	Non-H	H(model)	H(added)	Clashes	Symm-Clashes
1	A	6836	0	6825	29	0
1	B	6828	0	6814	23	0
2	A	9	0	3	0	0
2	B	9	0	3	1	0
3	A	103	0	0	0	0
3	B	122	0	0	0	0
All	All	13907	0	13645	51	0

The all-atom clashscore is defined as the number of clashes found per 1000 atoms (including hydrogen atoms). The all-atom clashscore for this structure is 2.

The worst 5 of 51 close contacts within the same asymmetric unit are listed below, sorted by their clash magnitude.

Atom-1	Atom-2	Interatomic distance (Å)	Clash overlap (Å)
1:B:535:TYR:OH	1:B:565:ASP:OD2	1.96	0.82
1:A:466:LYS:O	1:A:466:LYS:HE2	1.98	0.64
1:B:571:LYS:O	1:B:573:GLU:N	2.33	0.62
1:B:212:THR:HG21	1:B:244:LYS:HZ3	1.71	0.55
1:A:75:LEU:HD21	1:A:96:ILE:HD12	1.90	0.54

There are no symmetry-related clashes.

5.3 Torsion angles [i](#)

5.3.1 Protein backbone [i](#)

In the following table, the Percentiles column shows the percent Ramachandran outliers of the chain as a percentile score with respect to all X-ray entries followed by that with respect to entries of similar resolution.

The Analysed column shows the number of residues for which the backbone conformation was analysed, and the total number of residues.

Mol	Chain	Analysed	Favoured	Allowed	Outliers	Percentiles
1	A	853/921 (93%)	824 (97%)	26 (3%)	3 (0%)	34 30

Continued on next page...

Continued from previous page...

Mol	Chain	Analysed	Favoured	Allowed	Outliers	Percentiles
1	B	852/921 (92%)	820 (96%)	25 (3%)	7 (1%)	19 13
All	All	1705/1842 (93%)	1644 (96%)	51 (3%)	10 (1%)	25 19

5 of 10 Ramachandran outliers are listed below:

Mol	Chain	Res	Type
1	A	653	ASP
1	B	572	ILE
1	B	612	GLN
1	B	613	ASP
1	A	55	ASN

5.3.2 Protein sidechains [i](#)

In the following table, the Percentiles column shows the percent sidechain outliers of the chain as a percentile score with respect to all X-ray entries followed by that with respect to entries of similar resolution.

The Analysed column shows the number of residues for which the sidechain conformation was analysed, and the total number of residues.

Mol	Chain	Analysed	Rotameric	Outliers	Percentiles
1	A	759/816 (93%)	730 (96%)	29 (4%)	33 31
1	B	758/816 (93%)	729 (96%)	29 (4%)	33 31
All	All	1517/1632 (93%)	1459 (96%)	58 (4%)	33 31

5 of 58 residues with a non-rotameric sidechain are listed below:

Mol	Chain	Res	Type
1	A	856	LYS
1	B	817	LEU
1	B	106	THR
1	B	732	LYS
1	B	610	GLU

Sometimes sidechains can be flipped to improve hydrogen bonding and reduce clashes. All (1) such sidechains are listed below:

Mol	Chain	Res	Type
1	A	59	HIS

5.3.3 RNA [i](#)

There are no RNA molecules in this entry.

5.4 Non-standard residues in protein, DNA, RNA chains [i](#)

There are no non-standard protein/DNA/RNA residues in this entry.

5.5 Carbohydrates [i](#)

There are no monosaccharides in this entry.

5.6 Ligand geometry [i](#)

2 ligands are modelled in this entry.

In the following table, the Counts columns list the number of bonds (or angles) for which Mogul statistics could be retrieved, the number of bonds (or angles) that are observed in the model and the number of bonds (or angles) that are defined in the Chemical Component Dictionary. The Link column lists molecule types, if any, to which the group is linked. The Z score for a bond length (or angle) is the number of standard deviations the observed value is removed from the expected value. A bond length (or angle) with $|Z| > 2$ is considered an outlier worth inspection. RMSZ is the root-mean-square of all Z scores of the bond lengths (or angles).

Mol	Type	Chain	Res	Link	Bond lengths			Bond angles		
					Counts	RMSZ	# Z > 2	Counts	RMSZ	# Z > 2
2	ASP	B	911	-	6,8,8	1.98	3 (50%)	8,10,10	2.97	4 (50%)
2	ASP	A	911	-	6,8,8	1.34	0	8,10,10	1.88	3 (37%)

In the following table, the Chirals column lists the number of chiral outliers, the number of chiral centers analysed, the number of these observed in the model and the number defined in the Chemical Component Dictionary. Similar counts are reported in the Torsion and Rings columns. '-' means no outliers of that kind were identified.

Mol	Type	Chain	Res	Link	Chirals	Torsions	Rings
2	ASP	B	911	-	-	2/8/8/8	-
2	ASP	A	911	-	-	6/8/8/8	-

All (3) bond length outliers are listed below:

Mol	Chain	Res	Type	Atoms	Z	Observed(Å)	Ideal(Å)
2	B	911	ASP	OXT-C	-3.18	1.20	1.30

Continued on next page...

Continued from previous page...

Mol	Chain	Res	Type	Atoms	Z	Observed(Å)	Ideal(Å)
2	B	911	ASP	CB-CG	2.73	1.58	1.51
2	B	911	ASP	OD2-CG	-2.34	1.22	1.30

The worst 5 of 7 bond angle outliers are listed below:

Mol	Chain	Res	Type	Atoms	Z	Observed(°)	Ideal(°)
2	B	911	ASP	OXT-C-O	-6.23	109.95	124.09
2	A	911	ASP	OXT-C-O	-3.69	115.70	124.09
2	B	911	ASP	OD2-CG-CB	3.35	124.81	114.07
2	B	911	ASP	OXT-C-CA	3.24	124.43	113.38
2	B	911	ASP	OD2-CG-OD1	-2.68	116.62	123.30

There are no chirality outliers.

5 of 8 torsion outliers are listed below:

Mol	Chain	Res	Type	Atoms
2	A	911	ASP	C-CA-CB-CG
2	A	911	ASP	OXT-C-CA-N
2	A	911	ASP	O-C-CA-N
2	A	911	ASP	N-CA-CB-CG
2	B	911	ASP	N-CA-CB-CG

There are no ring outliers.

1 monomer is involved in 1 short contact:

Mol	Chain	Res	Type	Clashes	Symm-Clashes
2	B	911	ASP	1	0

5.7 Other polymers [i](#)

There are no such residues in this entry.

5.8 Polymer linkage issues [i](#)

There are no chain breaks in this entry.

6 Fit of model and data [i](#)

6.1 Protein, DNA and RNA chains [i](#)

In the following table, the column labelled ‘#RSRZ > 2’ contains the number (and percentage) of RSRZ outliers, followed by percent RSRZ outliers for the chain as percentile scores relative to all X-ray entries and entries of similar resolution. The OWAB column contains the minimum, median, 95th percentile and maximum values of the occupancy-weighted average B-factor per residue. The column labelled ‘Q < 0.9’ lists the number of (and percentage) of residues with an average occupancy less than 0.9.

Mol	Chain	Analysed	<RSRZ>	#RSRZ>2	OWAB(Å ²)	Q<0.9
1	A	850/921 (92%)	0.14	41 (4%) 30 29	26, 41, 71, 121	0
1	B	850/921 (92%)	-0.05	22 (2%) 56 54	27, 38, 64, 111	0
All	All	1700/1842 (92%)	0.04	63 (3%) 41 41	26, 40, 69, 121	0

The worst 5 of 63 RSRZ outliers are listed below:

Mol	Chain	Res	Type	RSRZ
1	A	56	VAL	7.7
1	A	651	ASP	6.9
1	A	55	ASN	6.2
1	B	653	ASP	6.2
1	B	650	GLY	4.9

6.2 Non-standard residues in protein, DNA, RNA chains [i](#)

There are no non-standard protein/DNA/RNA residues in this entry.

6.3 Carbohydrates [i](#)

There are no monosaccharides in this entry.

6.4 Ligands [i](#)

In the following table, the Atoms column lists the number of modelled atoms in the group and the number defined in the chemical component dictionary. The B-factors column lists the minimum, median, 95th percentile and maximum values of B factors of atoms in the group. The column labelled ‘Q < 0.9’ lists the number of atoms with occupancy less than 0.9.

Mol	Type	Chain	Res	Atoms	RSCC	RSR	B-factors(\AA^2)	Q<0.9
2	ASP	A	911	9/9	0.94	0.23	37,46,50,52	0
2	ASP	B	911	9/9	0.94	0.26	33,42,46,49	0

6.5 Other polymers [i](#)

There are no such residues in this entry.