



# Full wwPDB X-ray Structure Validation Report ⓘ

Jun 24, 2024 – 08:47 PM EDT

PDB ID : 6ZMJ  
Title : Crystal structure of human GFAT-1 R203H  
Authors : Ruegenberg, S.; Mayr, F.; Miethe, S.; Atanassov, I.; Baumann, U.; Denzel, M.S.  
Deposited on : 2020-07-02  
Resolution : 2.77 Å(reported)

This is a Full wwPDB X-ray Structure Validation Report for a publicly released PDB entry.

We welcome your comments at [validation@mail.wwpdb.org](mailto:validation@mail.wwpdb.org)

A user guide is available at

<https://www.wwpdb.org/validation/2017/XrayValidationReportHelp>

with specific help available everywhere you see the ⓘ symbol.

The types of validation reports are described at

<http://www.wwpdb.org/validation/2017/FAQs#types>.

---

The following versions of software and data (see [references ⓘ](#)) were used in the production of this report:

MolProbity : 4.02b-467  
Mogul : 2022.3.0, CSD as543be (2022)  
Xtriage (Phenix) : 1.20.1  
EDS : 2.37.1  
buster-report : 1.1.7 (2018)  
Percentile statistics : 20191225.v01 (using entries in the PDB archive December 25th 2019)  
Refmac : 5.8.0158  
CCP4 : 7.0.044 (Gargrove)  
Ideal geometry (proteins) : Engh & Huber (2001)  
Ideal geometry (DNA, RNA) : Parkinson et al. (1996)  
Validation Pipeline (wwPDB-VP) : 2.37.1

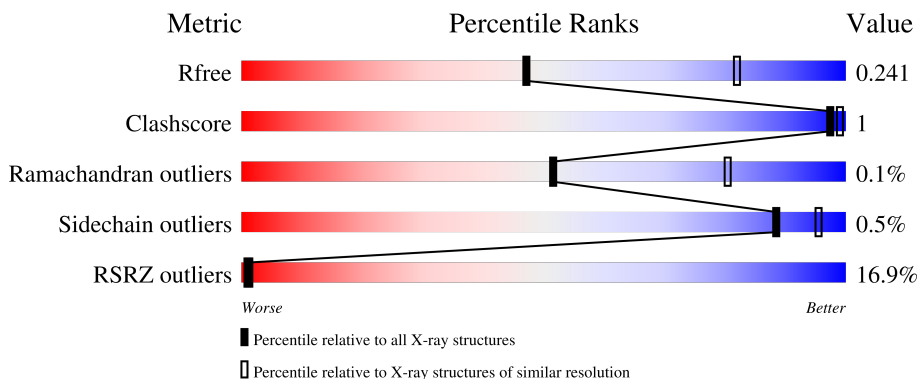
# 1 Overall quality at a glance

The following experimental techniques were used to determine the structure:

*X-RAY DIFFRACTION*

The reported resolution of this entry is 2.77 Å.

Percentile scores (ranging between 0-100) for global validation metrics of the entry are shown in the following graphic. The table shows the number of entries on which the scores are based.



Metric	Whole archive (#Entries)	Similar resolution (#Entries, resolution range(Å))
$R_{free}$	130704	4107 (2.80-2.76)
Clashscore	141614	4575 (2.80-2.76)
Ramachandran outliers	138981	4487 (2.80-2.76)
Sidechain outliers	138945	4489 (2.80-2.76)
RSRZ outliers	127900	4027 (2.80-2.76)

The table below summarises the geometric issues observed across the polymeric chains and their fit to the electron density. The red, orange, yellow and green segments of the lower bar indicate the fraction of residues that contain outliers for  $\geq 3$ , 2, 1 and 0 types of geometric quality criteria respectively. A grey segment represents the fraction of residues that are not modelled. The numeric value for each fraction is indicated below the corresponding segment, with a dot representing fractions  $\leq 5\%$ . The upper red bar (where present) indicates the fraction of residues that have poor fit to the electron density. The numeric value is given above the bar.

Mol	Chain	Length	Quality of chain
1	A	687	
1	B	687	

## 2 Entry composition

There are 4 unique types of molecules in this entry. The entry contains 20660 atoms, of which 10331 are hydrogens and 0 are deuteriums.

In the tables below, the ZeroOcc column contains the number of atoms modelled with zero occupancy, the AltConf column contains the number of residues with at least one atom in alternate conformation and the Trace column contains the number of residues modelled with at most 2 atoms.

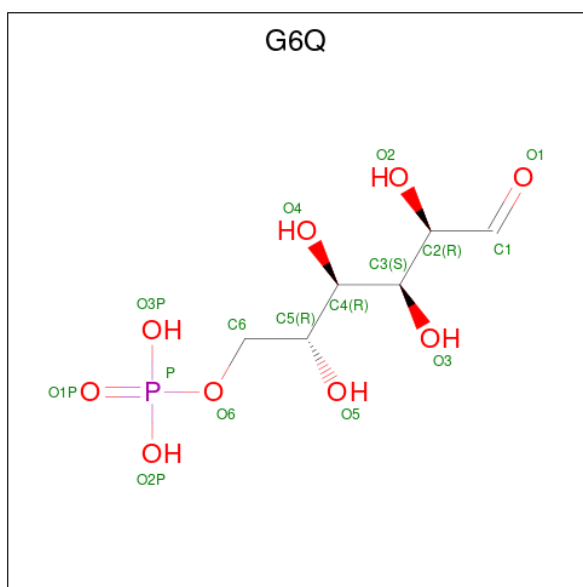
- Molecule 1 is a protein called Glutamine--fructose-6-phosphate aminotransferase [isomerizing] 1.

Mol	Chain	Residues	Atoms						ZeroOcc	AltConf	Trace
			Total	C	H	N	O	S			
1	A	649	10266	3241	5137	891	965	32	0	0	0
1	B	649	10298	3246	5160	892	968	32	0	0	0

There are 14 discrepancies between the modelled and reference sequences:

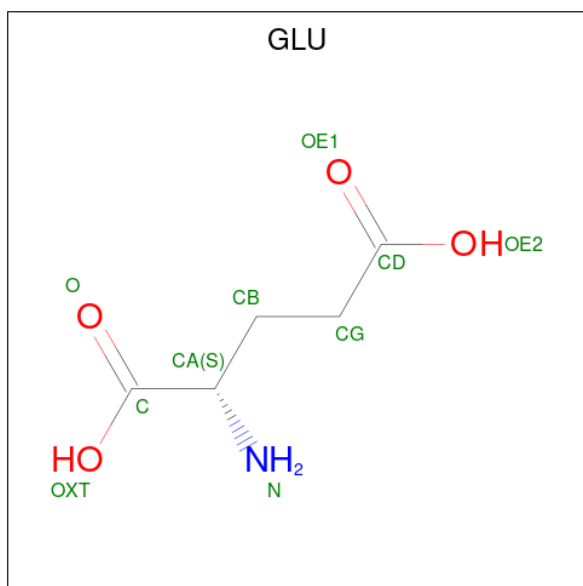
Chain	Residue	Modelled	Actual	Comment	Reference
A	203	HIS	ARG	engineered mutation	UNP Q06210
A	294F	HIS	-	insertion	UNP Q06210
A	294G	HIS	-	insertion	UNP Q06210
A	294H	HIS	-	insertion	UNP Q06210
A	294I	HIS	-	insertion	UNP Q06210
A	294J	HIS	-	insertion	UNP Q06210
A	294K	HIS	-	insertion	UNP Q06210
B	203	HIS	ARG	engineered mutation	UNP Q06210
B	293G	HIS	-	insertion	UNP Q06210
B	293H	HIS	-	insertion	UNP Q06210
B	293I	HIS	-	insertion	UNP Q06210
B	293J	HIS	-	insertion	UNP Q06210
B	293K	HIS	-	insertion	UNP Q06210
B	293L	HIS	-	insertion	UNP Q06210

- Molecule 2 is GLUCOSE-6-PHOSPHATE (three-letter code: G6Q) (formula: C<sub>6</sub>H<sub>13</sub>O<sub>9</sub>P).



Mol	Chain	Residues	Atoms					ZeroOcc	AltConf
2	A	1	Total	C	H	O	P	0	0
			29	6	13	9	1		
2	B	1	Total	C	H	O	P	0	0
			29	6	13	9	1		

- Molecule 3 is GLUTAMIC ACID (three-letter code: GLU) (formula:  $C_5H_9NO_4$ ).



Mol	Chain	Residues	Atoms					ZeroOcc	AltConf
3	A	1	Total	C	H	N	O	0	0
			18	5	8	1	4		

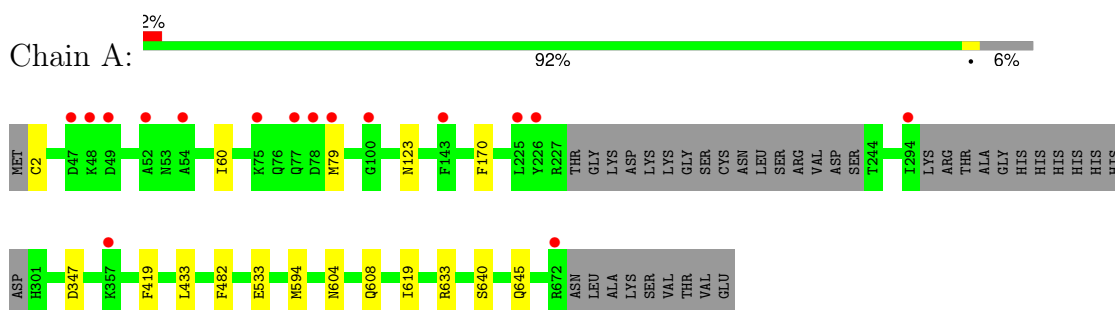
- Molecule 4 is water.

<b>Mol</b>	<b>Chain</b>	<b>Residues</b>	<b>Atoms</b>		<b>ZeroOcc</b>	<b>AltConf</b>
4	A	12	Total 12	O 12	0	0
4	B	8	Total 8	O 8	0	0

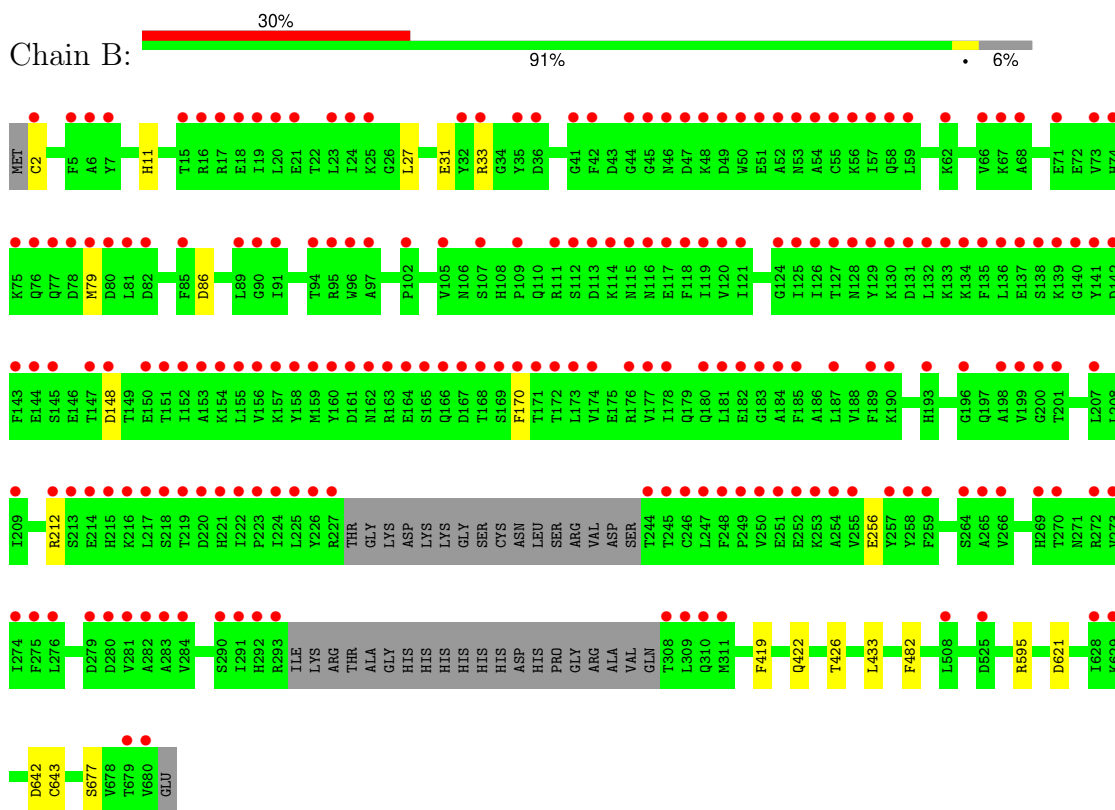
### 3 Residue-property plots [i](#)

These plots are drawn for all protein, RNA, DNA and oligosaccharide chains in the entry. The first graphic for a chain summarises the proportions of the various outlier classes displayed in the second graphic. The second graphic shows the sequence view annotated by issues in geometry and electron density. Residues are color-coded according to the number of geometric quality criteria for which they contain at least one outlier: green = 0, yellow = 1, orange = 2 and red = 3 or more. A red dot above a residue indicates a poor fit to the electron density ( $RSRZ > 2$ ). Stretches of 2 or more consecutive residues without any outlier are shown as a green connector. Residues present in the sample, but not in the model, are shown in grey.

- Molecule 1: Glutamine--fructose-6-phosphate aminotransferase [isomerizing] 1



- Molecule 1: Glutamine--fructose-6-phosphate aminotransferase [isomerizing] 1



## 4 Data and refinement statistics

Property	Value	Source
Space group	P 41 21 2	Depositor
Cell constants a, b, c, $\alpha$ , $\beta$ , $\gamma$	152.77Å 152.77Å 164.81Å 90.00° 90.00° 90.00°	Depositor
Resolution (Å)	48.65 – 2.77 48.97 – 2.77	Depositor EDS
% Data completeness (in resolution range)	99.8 (48.65-2.77) 95.5 (48.97-2.77)	Depositor EDS
$R_{merge}$	(Not available)	Depositor
$R_{sym}$	(Not available)	Depositor
$\langle I/\sigma(I) \rangle$ <sup>1</sup>	1.19 (at 2.77Å)	Xtrriage
Refinement program	PHENIX dev_2499	Depositor
R, $R_{free}$	0.201 , 0.239 0.207 , 0.241	Depositor DCC
$R_{free}$ test set	1993 reflections (4.00%)	wwPDB-VP
Wilson B-factor (Å <sup>2</sup> )	56.3	Xtrriage
Anisotropy	0.266	Xtrriage
Bulk solvent $k_{sol}$ (e/Å <sup>3</sup> ), $B_{sol}$ (Å <sup>2</sup> )	0.36 , 43.8	EDS
L-test for twinning <sup>2</sup>	$\langle  L  \rangle = 0.46$ , $\langle L^2 \rangle = 0.29$	Xtrriage
Estimated twinning fraction	No twinning to report.	Xtrriage
$F_o, F_c$ correlation	0.94	EDS
Total number of atoms	20660	wwPDB-VP
Average B, all atoms (Å <sup>2</sup> )	104.0	wwPDB-VP

Xtrriage's analysis on translational NCS is as follows: *The largest off-origin peak in the Patterson function is 2.78% of the height of the origin peak. No significant pseudotranslation is detected.*

<sup>1</sup>Intensities estimated from amplitudes.

<sup>2</sup>Theoretical values of  $\langle |L| \rangle$ ,  $\langle L^2 \rangle$  for acentric reflections are 0.5, 0.333 respectively for untwinned datasets, and 0.375, 0.2 for perfectly twinned datasets.

## 5 Model quality

### 5.1 Standard geometry

Bond lengths and bond angles in the following residue types are not validated in this section: G6Q

The Z score for a bond length (or angle) is the number of standard deviations the observed value is removed from the expected value. A bond length (or angle) with  $|Z| > 5$  is considered an outlier worth inspection. RMSZ is the root-mean-square of all Z scores of the bond lengths (or angles).

Mol	Chain	Bond lengths		Bond angles	
		RMSZ	# Z  >5	RMSZ	# Z  >5
1	A	0.24	0/5219	0.42	0/7045
1	B	0.24	0/5227	0.42	0/7055
All	All	0.24	0/10446	0.42	0/14100

There are no bond length outliers.

There are no bond angle outliers.

There are no chirality outliers.

There are no planarity outliers.

### 5.2 Too-close contacts

In the following table, the Non-H and H(model) columns list the number of non-hydrogen atoms and hydrogen atoms in the chain respectively. The H(added) column lists the number of hydrogen atoms added and optimized by MolProbity. The Clashes column lists the number of clashes within the asymmetric unit, whereas Symm-Clashes lists symmetry-related clashes.

Mol	Chain	Non-H	H(model)	H(added)	Clashes	Symm-Clashes
1	A	5129	5137	5135	7	0
1	B	5138	5160	5158	10	0
2	A	16	13	11	0	0
2	B	16	13	11	2	0
3	A	10	8	5	0	0
4	A	12	0	0	0	0
4	B	8	0	0	0	0
All	All	10329	10331	10320	17	0

The all-atom clashscore is defined as the number of clashes found per 1000 atoms (including hydrogen atoms). The all-atom clashscore for this structure is 1.



All (17) close contacts within the same asymmetric unit are listed below, sorted by their clash magnitude.

Atom-1	Atom-2	Interatomic distance (Å)	Clash overlap (Å)
1:A:640:SER:N	1:A:645:GLN:OE1	2.27	0.67
1:A:604:ASN:OD1	1:A:608:GLN:NE2	2.31	0.62
1:A:2:CYS:N	1:A:123:ASN:OD1	2.37	0.57
1:B:642:ASP:OD1	1:B:643:CYS:N	2.39	0.55
1:A:533:GLU:OE1	1:A:633:ARG:NE	2.39	0.55
1:B:595:ARG:NE	1:B:621:ASP:OD2	2.39	0.50
1:B:422:GLN:N	2:B:701:G6Q:O1P	2.43	0.48
1:B:212:ARG:NH2	1:B:256:GLU:OE1	2.43	0.47
1:A:594:MET:HE1	1:A:619:ILE:HG22	1.98	0.46
1:A:419:PHE:CZ	1:A:433:LEU:HA	2.51	0.45
1:B:426:THR:OG1	2:B:701:G6Q:O3P	2.30	0.44
1:B:11:HIS:N	1:B:86:ASP:O	2.50	0.44
1:B:27:LEU:O	1:B:31:GLU:N	2.52	0.43
1:A:60:ILE:HD11	1:A:79:MET:HE1	1.99	0.42
1:B:419:PHE:CZ	1:B:433:LEU:HA	2.55	0.42
1:B:2:CYS:N	1:B:33:ARG:O	2.53	0.41
1:B:148:ASP:OD1	1:B:148:ASP:N	2.52	0.40

There are no symmetry-related clashes.

## 5.3 Torsion angles [i](#)

### 5.3.1 Protein backbone [i](#)

In the following table, the Percentiles column shows the percent Ramachandran outliers of the chain as a percentile score with respect to all X-ray entries followed by that with respect to entries of similar resolution.

The Analysed column shows the number of residues for which the backbone conformation was analysed, and the total number of residues.

Mol	Chain	Analysed	Favoured	Allowed	Outliers	Percentiles	
1	A	643/687 (94%)	627 (98%)	16 (2%)	0	100	100
1	B	643/687 (94%)	606 (94%)	36 (6%)	1 (0%)	47	76
All	All	1286/1374 (94%)	1233 (96%)	52 (4%)	1 (0%)	51	80

All (1) Ramachandran outliers are listed below:

Mol	Chain	Res	Type
1	B	677	SER

### 5.3.2 Protein sidechains [i](#)

In the following table, the Percentiles column shows the percent sidechain outliers of the chain as a percentile score with respect to all X-ray entries followed by that with respect to entries of similar resolution.

The Analysed column shows the number of residues for which the sidechain conformation was analysed, and the total number of residues.

Mol	Chain	Analysed	Rotameric	Outliers	Percentiles	
1	A	564/601 (94%)	561 (100%)	3 (0%)	88	95
1	B	568/601 (94%)	565 (100%)	3 (0%)	88	95
All	All	1132/1202 (94%)	1126 (100%)	6 (0%)	88	95

All (6) residues with a non-rotameric sidechain are listed below:

Mol	Chain	Res	Type
1	A	170	PHE
1	A	347	ASP
1	A	482	PHE
1	B	79	MET
1	B	170	PHE
1	B	482	PHE

Sometimes sidechains can be flipped to improve hydrogen bonding and reduce clashes. There are no such sidechains identified.

### 5.3.3 RNA [i](#)

There are no RNA molecules in this entry.

## 5.4 Non-standard residues in protein, DNA, RNA chains [i](#)

There are no non-standard protein/DNA/RNA residues in this entry.

### 5.5 Carbohydrates [i](#)

There are no monosaccharides in this entry.

## 5.6 Ligand geometry

3 ligands are modelled in this entry.

In the following table, the Counts columns list the number of bonds (or angles) for which Mogul statistics could be retrieved, the number of bonds (or angles) that are observed in the model and the number of bonds (or angles) that are defined in the Chemical Component Dictionary. The Link column lists molecule types, if any, to which the group is linked. The Z score for a bond length (or angle) is the number of standard deviations the observed value is removed from the expected value. A bond length (or angle) with  $|Z| > 2$  is considered an outlier worth inspection. RMSZ is the root-mean-square of all Z scores of the bond lengths (or angles).

Mol	Type	Chain	Res	Link	Bond lengths			Bond angles		
					Counts	RMSZ	# Z  > 2	Counts	RMSZ	# Z  > 2
2	G6Q	B	701	-	14,15,15	0.37	0	19,21,21	0.69	1 (5%)
2	G6Q	A	701	-	14,15,15	0.37	0	19,21,21	0.71	1 (5%)
3	GLU	A	702	-	8,9,9	1.08	1 (12%)	8,11,11	1.19	1 (12%)

In the following table, the Chirals column lists the number of chiral outliers, the number of chiral centers analysed, the number of these observed in the model and the number defined in the Chemical Component Dictionary. Similar counts are reported in the Torsion and Rings columns. '-' means no outliers of that kind were identified.

Mol	Type	Chain	Res	Link	Chirals	Torsions	Rings
2	G6Q	B	701	-	-	8/19/20/20	-
2	G6Q	A	701	-	-	4/19/20/20	-
3	GLU	A	702	-	-	3/9/9/9	-

All (1) bond length outliers are listed below:

Mol	Chain	Res	Type	Atoms	Z	Observed(Å)	Ideal(Å)
3	A	702	GLU	OXT-C	-2.21	1.23	1.30

All (3) bond angle outliers are listed below:

Mol	Chain	Res	Type	Atoms	Z	Observed(°)	Ideal(°)
3	A	702	GLU	OXT-C-O	-2.67	118.01	124.08
2	B	701	G6Q	O2-C2-C3	2.18	114.56	109.46
2	A	701	G6Q	O2-C2-C3	2.09	114.35	109.46

There are no chirality outliers.

All (15) torsion outliers are listed below:

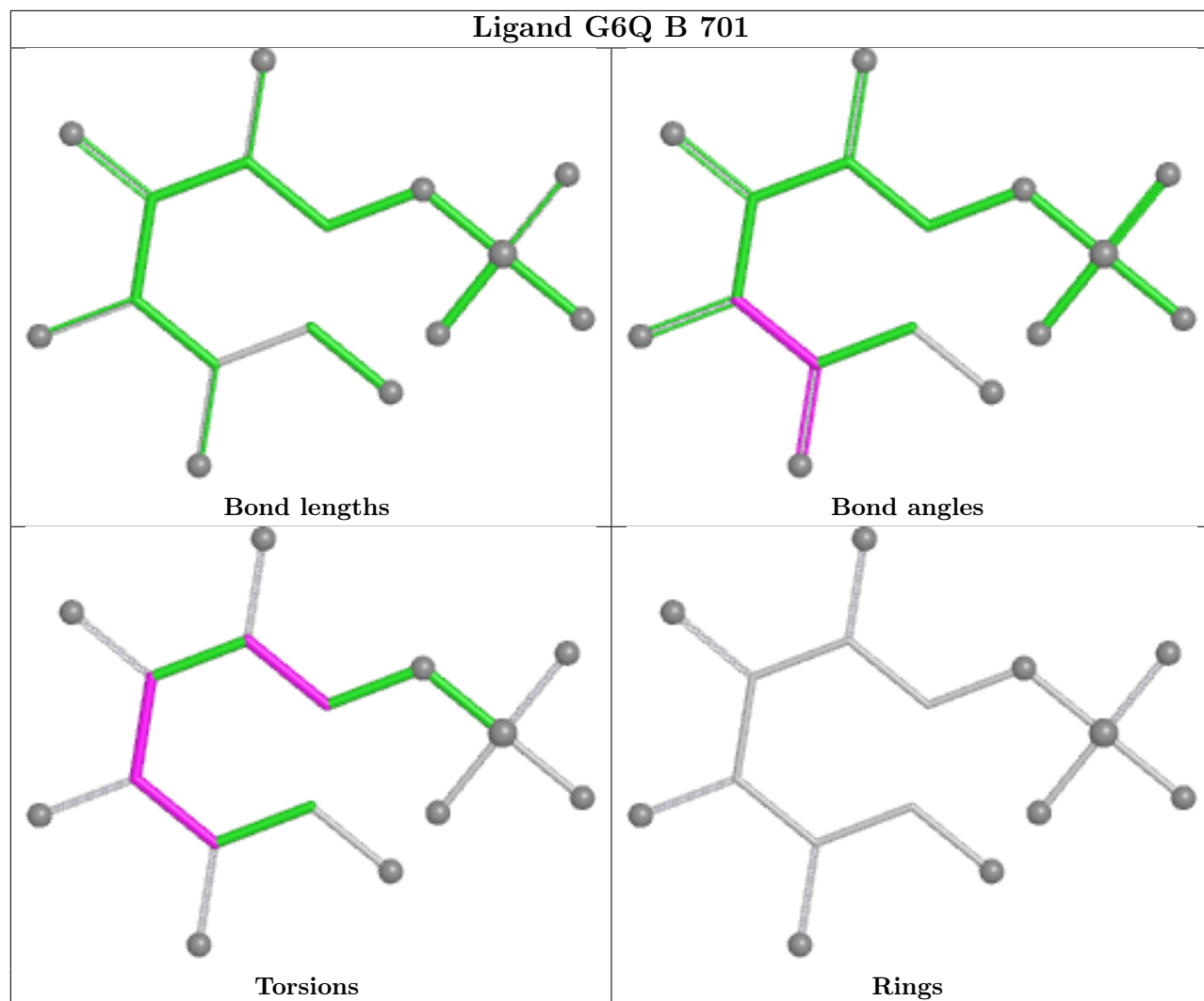
Mol	Chain	Res	Type	Atoms
2	A	701	G6Q	C1-C2-C3-C4
2	A	701	G6Q	C1-C2-C3-O3
2	A	701	G6Q	O2-C2-C3-C4
2	A	701	G6Q	O2-C2-C3-O3
2	B	701	G6Q	O2-C2-C3-O3
2	B	701	G6Q	C2-C3-C4-O4
2	B	701	G6Q	C2-C3-C4-C5
2	B	701	G6Q	O3-C3-C4-C5
2	B	701	G6Q	O3-C3-C4-O4
2	B	701	G6Q	C4-C5-C6-O6
2	B	701	G6Q	C1-C2-C3-O3
3	A	702	GLU	OE2-CD-CG-CB
3	A	702	GLU	OE1-CD-CG-CB
3	A	702	GLU	OXT-C-CA-N
2	B	701	G6Q	O2-C2-C3-C4

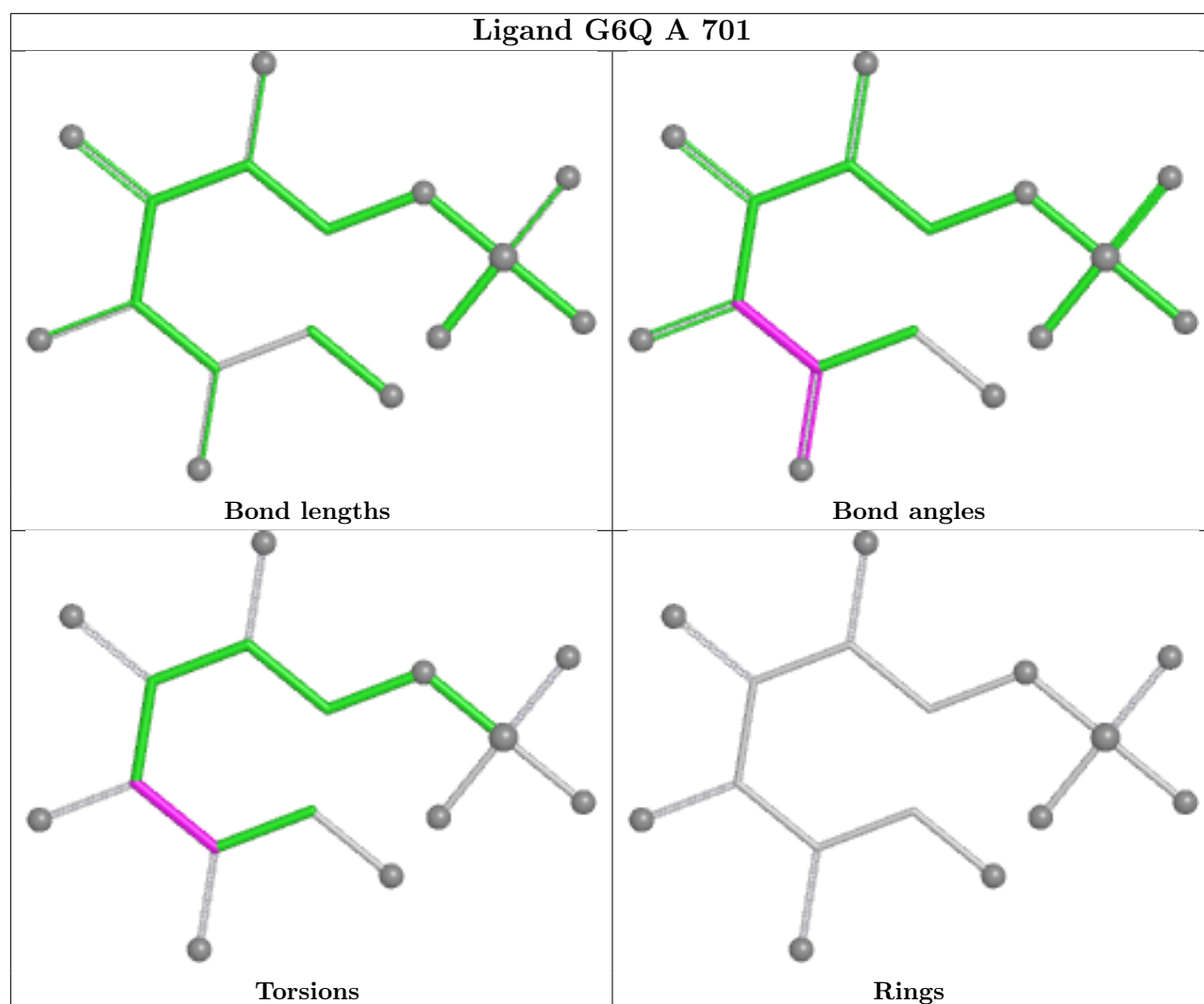
There are no ring outliers.

1 monomer is involved in 2 short contacts:

Mol	Chain	Res	Type	Clashes	Symm-Clashes
2	B	701	G6Q	2	0

The following is a two-dimensional graphical depiction of Mogul quality analysis of bond lengths, bond angles, torsion angles, and ring geometry for all instances of the Ligand of Interest. In addition, ligands with molecular weight > 250 and outliers as shown on the validation Tables will also be included. For torsion angles, if less than 5% of the Mogul distribution of torsion angles is within 10 degrees of the torsion angle in question, then that torsion angle is considered an outlier. Any bond that is central to one or more torsion angles identified as an outlier by Mogul will be highlighted in the graph. For rings, the root-mean-square deviation (RMSD) between the ring in question and similar rings identified by Mogul is calculated over all ring torsion angles. If the average RMSD is greater than 60 degrees and the minimal RMSD between the ring in question and any Mogul-identified rings is also greater than 60 degrees, then that ring is considered an outlier. The outliers are highlighted in purple. The color gray indicates Mogul did not find sufficient equivalents in the CSD to analyse the geometry.





## 5.7 Other polymers [i](#)

There are no such residues in this entry.

## 5.8 Polymer linkage issues [i](#)

There are no chain breaks in this entry.

## 6 Fit of model and data

### 6.1 Protein, DNA and RNA chains

In the following table, the column labelled ‘#RSRZ > 2’ contains the number (and percentage) of RSRZ outliers, followed by percent RSRZ outliers for the chain as percentile scores relative to all X-ray entries and entries of similar resolution. The OWAB column contains the minimum, median, 95<sup>th</sup> percentile and maximum values of the occupancy-weighted average B-factor per residue. The column labelled ‘Q < 0.9’ lists the number of (and percentage) of residues with an average occupancy less than 0.9.

Mol	Chain	Analysed	<RSRZ>	#RSRZ>2	OWAB(Å <sup>2</sup> )	Q<0.9
1	A	649/687 (94%)	0.23	16 (2%) 57 52	37, 60, 114, 176	0
1	B	649/687 (94%)	1.78	204 (31%) 0 0	39, 89, 254, 344	0
All	All	1298/1374 (94%)	1.01	220 (16%) 1 1	37, 68, 225, 344	0

All (220) RSRZ outliers are listed below:

Mol	Chain	Res	Type	RSRZ
1	B	155	LEU	11.9
1	B	153	ALA	11.0
1	B	170	PHE	10.9
1	B	225	LEU	10.7
1	B	223	PRO	10.3
1	B	75	LYS	10.3
1	B	129	TYR	10.3
1	B	46	ASN	10.1
1	B	73	VAL	9.9
1	B	6	ALA	9.7
1	B	78	ASP	9.6
1	B	154	LYS	9.4
1	B	177	VAL	9.1
1	B	24	ILE	9.1
1	B	47	ASP	8.8
1	B	19	ILE	8.8
1	B	77	GLN	8.7
1	B	20	LEU	8.5
1	B	127	THR	8.4
1	B	111	ARG	8.2
1	B	281	VAL	8.1
1	B	143	PHE	7.8
1	B	258	TYR	7.8
1	B	245	THR	7.4

*Continued on next page...*

*Continued from previous page...*

<b>Mol</b>	<b>Chain</b>	<b>Res</b>	<b>Type</b>	<b>RSRZ</b>
1	B	15	THR	7.4
1	B	160	TYR	7.4
1	B	176	ARG	7.3
1	B	58	GLN	7.3
1	B	45	GLY	7.3
1	B	156	VAL	7.2
1	B	291	ILE	7.1
1	B	130	LYS	7.1
1	B	52	ALA	7.0
1	B	201	THR	7.0
1	B	249	PRO	6.8
1	B	41	GLY	6.8
1	B	221	HIS	6.8
1	B	174	VAL	6.7
1	B	114	LYS	6.6
1	B	259	PHE	6.5
1	B	145	SER	6.4
1	B	57	ILE	6.4
1	B	140	GLY	6.3
1	B	222	ILE	6.3
1	B	79	MET	6.2
1	B	54	ALA	6.2
1	B	250	VAL	6.2
1	B	171	THR	6.2
1	B	128	ASN	6.1
1	B	173	LEU	6.1
1	B	55	CYS	6.1
1	B	158	TYR	6.0
1	B	217	LEU	6.0
1	B	292	HIS	6.0
1	B	246	CYS	6.0
1	B	74	HIS	5.9
1	B	115	ASN	5.9
1	B	272	ARG	5.8
1	B	220	ASP	5.8
1	B	215	HIS	5.8
1	B	51	GLU	5.7
1	B	159	MET	5.6
1	B	157	LYS	5.5
1	B	309	LEU	5.5
1	B	168	THR	5.4
1	B	251	GLU	5.4

*Continued on next page...*



*Continued from previous page...*

<b>Mol</b>	<b>Chain</b>	<b>Res</b>	<b>Type</b>	<b>RSRZ</b>
1	B	169	SER	5.2
1	B	120	VAL	5.1
1	B	62	LYS	5.1
1	B	213	SER	5.1
1	B	161	ASP	5.1
1	B	152	ILE	5.0
1	B	49	ASP	4.9
1	B	135	PHE	4.9
1	B	293	ARG	4.9
1	B	56	LYS	4.9
1	B	59	LEU	4.8
1	B	134	LYS	4.8
1	B	42	PHE	4.8
1	B	137	GLU	4.7
1	B	53	ASN	4.7
1	B	167	ASP	4.7
1	B	226	TYR	4.7
1	B	91	ILE	4.7
1	B	151	THR	4.6
1	B	183	GLY	4.6
1	B	133	LYS	4.6
1	B	139	LYS	4.6
1	A	48	LYS	4.6
1	B	48	LYS	4.5
1	B	116	ASN	4.5
1	B	182	GLU	4.5
1	B	7	TYR	4.4
1	B	150	GLU	4.4
1	B	44	GLY	4.4
1	B	76	GLN	4.4
1	B	94	THR	4.4
1	B	308	THR	4.4
1	B	166	GLN	4.3
1	B	200	GLY	4.3
1	B	81	LEU	4.3
1	B	244	THR	4.3
1	B	132	LEU	4.2
1	B	248	PHE	4.2
1	B	274	ILE	4.1
1	B	16	ARG	4.1
1	B	199	VAL	4.1
1	B	266	VAL	4.1

*Continued on next page...*

*Continued from previous page...*

<b>Mol</b>	<b>Chain</b>	<b>Res</b>	<b>Type</b>	<b>RSRZ</b>
1	B	141	TYR	4.0
1	B	172	THR	4.0
1	B	82	ASP	4.0
1	B	275	PHE	4.0
1	B	247	LEU	4.0
1	B	214	GLU	4.0
1	B	50	TRP	3.9
1	B	119	ILE	3.9
1	B	189	PHE	3.9
1	B	107	SER	3.9
1	B	216	LYS	3.9
1	B	112	SER	3.8
1	B	218	SER	3.8
1	A	79	MET	3.8
1	B	164	GLU	3.7
1	B	125	ILE	3.7
1	B	224	ILE	3.7
1	A	49	ASP	3.7
1	B	35	TYR	3.7
1	B	90	GLY	3.7
1	B	118	PHE	3.6
1	B	5	PHE	3.6
1	B	185	PHE	3.6
1	B	131	ASP	3.6
1	B	190	LYS	3.6
1	B	270	THR	3.5
1	B	207	LEU	3.5
1	A	52	ALA	3.5
1	B	276	LEU	3.5
1	B	196	GLY	3.5
1	B	80	ASP	3.4
1	A	77	GLN	3.4
1	B	219	THR	3.4
1	B	33	ARG	3.4
1	B	71	GLU	3.4
1	B	36	ASP	3.4
1	B	180	GLN	3.3
1	B	273	VAL	3.3
1	B	85	PHE	3.2
1	B	209	ILE	3.2
1	B	311	MET	3.2
1	B	269	HIS	3.2

*Continued on next page...*

*Continued from previous page...*

<b>Mol</b>	<b>Chain</b>	<b>Res</b>	<b>Type</b>	<b>RSRZ</b>
1	B	138	SER	3.2
1	B	142	ASP	3.1
1	B	198	ALA	3.1
1	B	680	VAL	3.1
1	B	148	ASP	3.1
1	B	124	GLY	3.0
1	B	264	SER	3.0
1	B	136	LEU	3.0
1	B	162	ASN	3.0
1	B	629	LYS	3.0
1	B	2	CYS	2.9
1	A	78	ASP	2.8
1	B	121	ILE	2.8
1	B	21	GLU	2.8
1	B	628	ILE	2.8
1	B	68	ALA	2.8
1	A	75	LYS	2.7
1	B	254	ALA	2.7
1	B	23	LEU	2.7
1	B	96	TRP	2.7
1	B	257	TYR	2.7
1	A	54	ALA	2.7
1	B	109	PRO	2.7
1	B	163	ARG	2.6
1	B	126	ILE	2.6
1	B	282	ALA	2.6
1	A	47	ASP	2.6
1	B	25	LYS	2.6
1	B	67	LYS	2.6
1	A	672	ARG	2.6
1	B	32	TYR	2.6
1	B	89	LEU	2.5
1	B	193	HIS	2.5
1	B	279	ASP	2.5
1	B	144	GLU	2.5
1	B	117	GLU	2.5
1	B	227	ARG	2.5
1	B	97	ALA	2.5
1	B	252	GLU	2.5
1	B	147	THR	2.4
1	B	290	SER	2.4
1	B	284	VAL	2.4

*Continued on next page...*

*Continued from previous page...*

Mol	Chain	Res	Type	RSRZ
1	A	294	ILE	2.4
1	B	679	THR	2.4
1	B	66	VAL	2.4
1	A	226	TYR	2.3
1	B	18	GLU	2.3
1	B	178	ILE	2.3
1	B	105	VAL	2.3
1	B	95	ARG	2.3
1	B	310	GLN	2.3
1	B	508	LEU	2.3
1	B	165	SER	2.2
1	B	187	LEU	2.2
1	B	265	ALA	2.2
1	B	283	ALA	2.2
1	B	212	ARG	2.2
1	B	255	VAL	2.2
1	B	102	PRO	2.2
1	B	113	ASP	2.2
1	A	225	LEU	2.1
1	B	184	ALA	2.1
1	B	181	LEU	2.1
1	A	100	GLY	2.1
1	B	253	LYS	2.1
1	B	525	ASP	2.1
1	A	357	LYS	2.1
1	B	17	ARG	2.1
1	B	280	ASP	2.0
1	A	143	PHE	2.0

## 6.2 Non-standard residues in protein, DNA, RNA chains [i](#)

There are no non-standard protein/DNA/RNA residues in this entry.

## 6.3 Carbohydrates [i](#)

There are no monosaccharides in this entry.

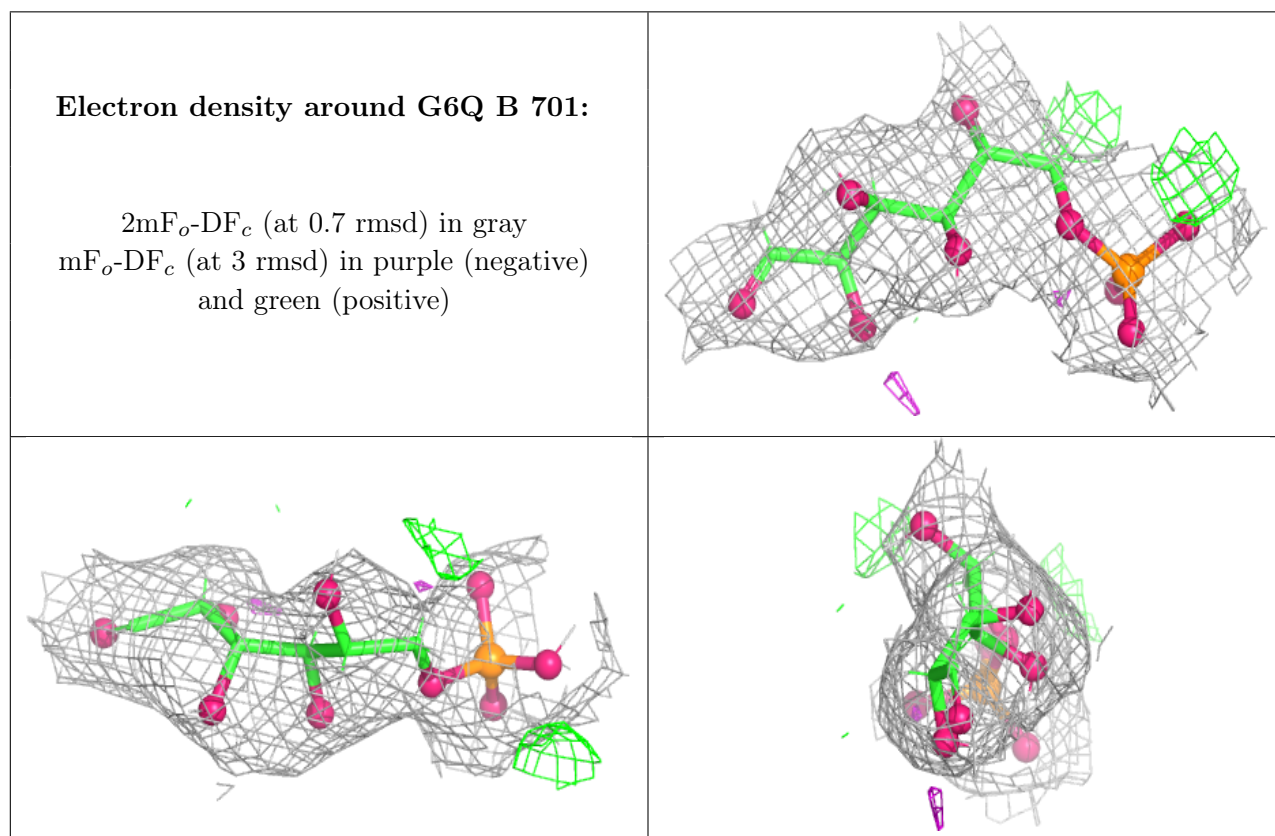
## 6.4 Ligands [i](#)

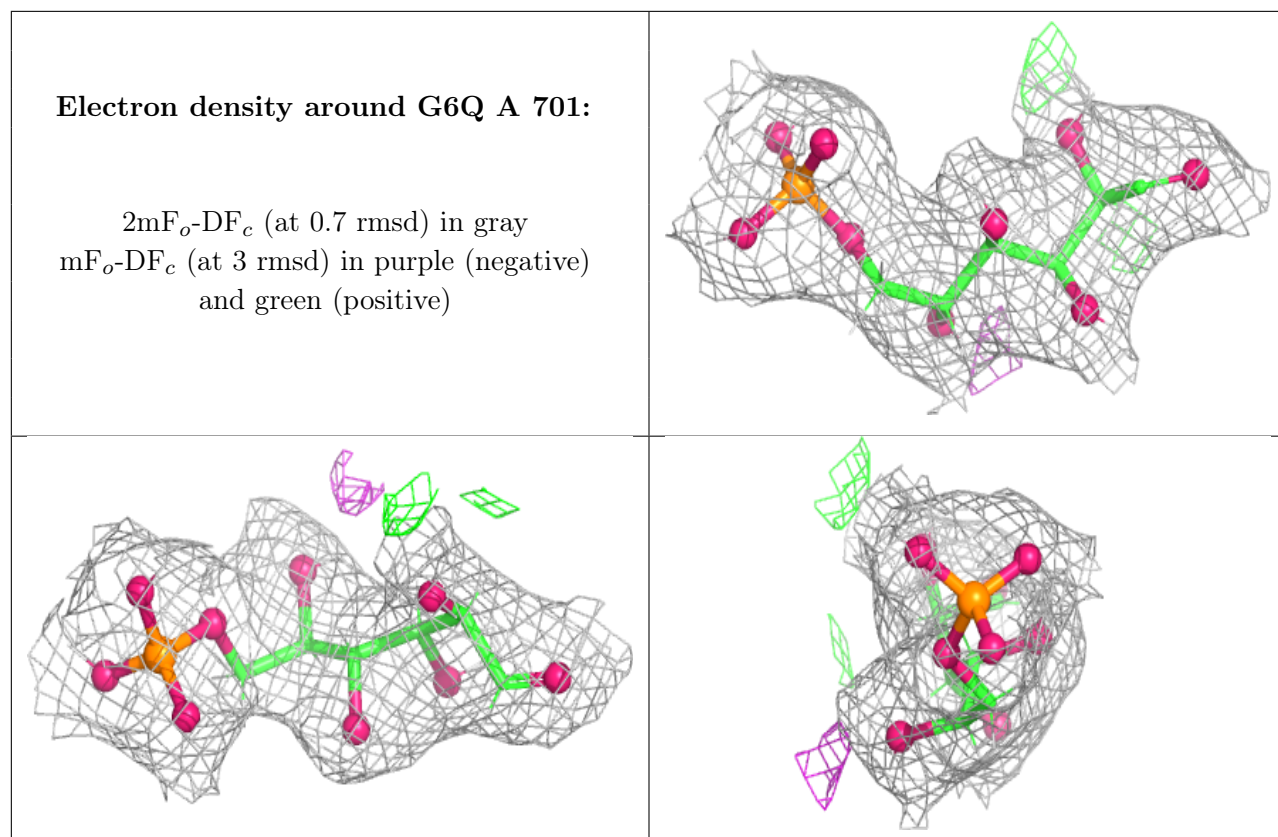
In the following table, the Atoms column lists the number of modelled atoms in the group and the number defined in the chemical component dictionary. The B-factors column lists the minimum,

median, 95<sup>th</sup> percentile and maximum values of B factors of atoms in the group. The column labelled 'Q < 0.9' lists the number of atoms with occupancy less than 0.9.

Mol	Type	Chain	Res	Atoms	RSCC	RSR	B-factors(Å <sup>2</sup> )	Q<0.9
3	GLU	A	702	10/10	0.94	0.23	78,85,102,102	0
2	G6Q	B	701	16/16	0.97	0.27	45,60,72,77	0
2	G6Q	A	701	16/16	0.97	0.27	44,50,60,63	0

The following is a graphical depiction of the model fit to experimental electron density of all instances of the Ligand of Interest. In addition, ligands with molecular weight > 250 and outliers as shown on the geometry validation Tables will also be included. Each fit is shown from different orientation to approximate a three-dimensional view.





## 6.5 Other polymers [i](#)

There are no such residues in this entry.