



Full wwPDB X-ray Structure Validation Report ⓘ

Jun 19, 2024 – 06:05 AM EDT

PDB ID : 3ZNK
Title : H5 Haemagglutinin in Complex with 6-O-Sulfo-2,3-Sialyllactosamine (Sulfated 3'SLN)
Authors : Xiong, X.; Tuzikov, A.; Coombs, P.; Martin, S.R.; Walker, P.A.; Gamblin, S.J.; Bovin, N.; Skehel, J.J.
Deposited on : 2013-02-15
Resolution : 2.71 Å(reported)

This is a Full wwPDB X-ray Structure Validation Report for a publicly released PDB entry.

We welcome your comments at validation@mail.wwpdb.org

A user guide is available at

<https://www.wwpdb.org/validation/2017/XrayValidationReportHelp>

with specific help available everywhere you see the ⓘ symbol.

The types of validation reports are described at

<http://www.wwpdb.org/validation/2017/FAQs#types>.

The following versions of software and data (see [references ⓘ](#)) were used in the production of this report:

MolProbity : 4.02b-467
Mogul : 2022.3.0, CSD as543be (2022)
Xtrriage (Phenix) : 1.20.1
EDS : 2.37.1
Percentile statistics : 20191225.v01 (using entries in the PDB archive December 25th 2019)
Refmac : 5.8.0158
CCP4 : 7.0.044 (Gargrove)
Ideal geometry (proteins) : Engh & Huber (2001)
Ideal geometry (DNA, RNA) : Parkinson et al. (1996)
Validation Pipeline (wwPDB-VP) : 2.37.1

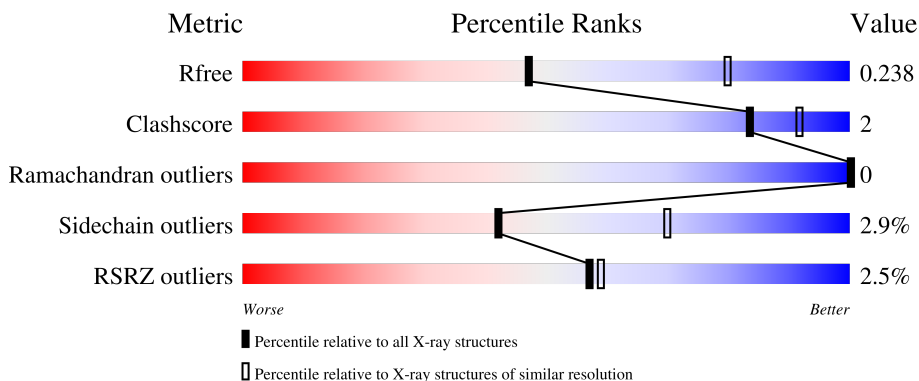
1 Overall quality at a glance

The following experimental techniques were used to determine the structure:

X-RAY DIFFRACTION

The reported resolution of this entry is 2.71 Å.

Percentile scores (ranging between 0-100) for global validation metrics of the entry are shown in the following graphic. The table shows the number of entries on which the scores are based.



Metric	Whole archive (#Entries)	Similar resolution (#Entries, resolution range(Å))
R_{free}	130704	3359 (2.74-2.70)
Clashscore	141614	3686 (2.74-2.70)
Ramachandran outliers	138981	3622 (2.74-2.70)
Sidechain outliers	138945	3623 (2.74-2.70)
RSRZ outliers	127900	3276 (2.74-2.70)

The table below summarises the geometric issues observed across the polymeric chains and their fit to the electron density. The red, orange, yellow and green segments of the lower bar indicate the fraction of residues that contain outliers for ≥ 3 , 2, 1 and 0 types of geometric quality criteria respectively. A grey segment represents the fraction of residues that are not modelled. The numeric value for each fraction is indicated below the corresponding segment, with a dot representing fractions $\leq 5\%$. The upper red bar (where present) indicates the fraction of residues that have poor fit to the electron density. The numeric value is given above the bar.

Mol	Chain	Length	Quality of chain
1	A	326	 2% 90% 8%
1	C	326	 6% 90% 8%
1	E	326	 2% 90% 8%
2	B	166	 % 89% 8%
2	D	166	 % 90% 8%

Continued on next page...

Continued from previous page...

Mol	Chain	Length	Quality of chain
2	F	166	 % 89% 8% ..
3	G	3	 67% 33%
3	H	3	 67% 33%
3	I	3	 67% 33%

The following table lists non-polymeric compounds, carbohydrate monomers and non-standard residues in protein, DNA, RNA chains that are outliers for geometric or electron-density-fit criteria:

Mol	Type	Chain	Res	Chirality	Geometry	Clashes	Electron density
4	NAG	A	1165	X	-	-	-
4	NAG	B	1154	X	-	-	-
4	NAG	D	1154	X	-	-	-
4	NAG	F	1154	X	-	-	-

2 Entry composition [i](#)

There are 6 unique types of molecules in this entry. The entry contains 12112 atoms, of which 0 are hydrogens and 0 are deuteriums.

In the tables below, the ZeroOcc column contains the number of atoms modelled with zero occupancy, the AltConf column contains the number of residues with at least one atom in alternate conformation and the Trace column contains the number of residues modelled with at most 2 atoms.

- Molecule 1 is a protein called HAEMAGGLUTININ.

Mol	Chain	Residues	Atoms					ZeroOcc	AltConf	Trace
			Total	C	N	O	S			
1	A	321	2547	1609	439	484	15	0	0	0
1	C	321	2547	1609	439	484	15	0	0	0
1	E	321	2547	1609	439	484	15	0	0	0

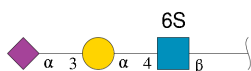
There are 3 discrepancies between the modelled and reference sequences:

Chain	Residue	Modelled	Actual	Comment	Reference
A	325	THR	ARG	conflict	UNP Q6DQ34
C	325	THR	ARG	conflict	UNP Q6DQ34
E	325	THR	ARG	conflict	UNP Q6DQ34

- Molecule 2 is a protein called HAEMAGGLUTININ.

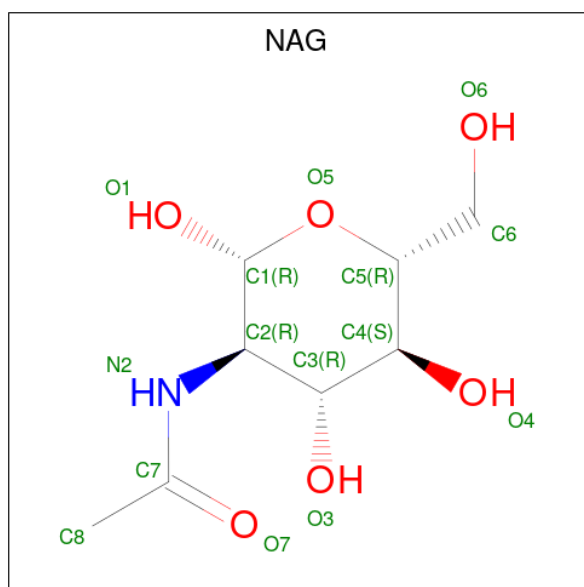
Mol	Chain	Residues	Atoms					ZeroOcc	AltConf	Trace
			Total	C	N	O	S			
2	B	163	1318	822	227	261	8	0	0	0
2	D	163	1318	822	227	261	8	0	0	0
2	F	163	1318	822	227	261	8	0	0	0

- Molecule 3 is an oligosaccharide called N-acetyl-alpha-neuraminic acid-(2-3)-alpha-D-galactopyranose-(1-4)-2-acetamido-2-deoxy-6-O-sulfo-beta-D-glucopyranose.



Mol	Chain	Residues	Atoms				ZeroOcc	AltConf	Trace	
3	G	3	Total	C	N	O	S	0	0	0
			50	25	2	22	1			
3	H	3	Total	C	N	O	S	0	0	0
			50	25	2	22	1			
3	I	3	Total	C	N	O	S	0	0	0
			50	25	2	22	1			

- Molecule 4 is 2-acetamido-2-deoxy-beta-D-glucopyranose (three-letter code: NAG) (formula: $C_8H_{15}NO_6$).



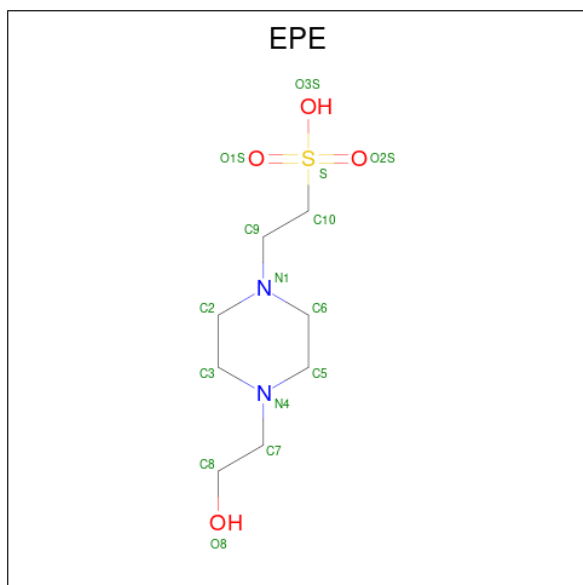
Mol	Chain	Residues	Atoms				ZeroOcc	AltConf
4	A	1	Total	C	N	O	0	0
			14	8	1	5		
4	A	1	Total	C	N	O	0	0
			14	8	1	5		
4	B	1	Total	C	N	O	0	0
			14	8	1	5		
4	C	1	Total	C	N	O	0	0
			14	8	1	5		
4	C	1	Total	C	N	O	0	0
			14	8	1	5		
4	D	1	Total	C	N	O	0	0
			14	8	1	5		
4	E	1	Total	C	N	O	0	0
			14	8	1	5		
4	E	1	Total	C	N	O	0	0
			14	8	1	5		

Continued on next page...

Continued from previous page...

Mol	Chain	Residues	Atoms				ZeroOcc	AltConf
4	F	1	Total	C	N	O	0	0
			14	8	1	5		

- Molecule 5 is 4-(2-HYDROXYETHYL)-1-PIPERAZINE ETHANESULFONIC ACID (three-letter code: EPE) (formula: C₈H₁₈N₂O₄S).



Mol	Chain	Residues	Atoms					ZeroOcc	AltConf
5	B	1	Total	C	N	O	S	0	0
			15	8	2	4	1		
5	D	1	Total	C	N	O	S	0	0
			15	8	2	4	1		
5	F	1	Total	C	N	O	S	0	0
			15	8	2	4	1		

- Molecule 6 is water.

Mol	Chain	Residues	Atoms		ZeroOcc	AltConf
6	A	43	Total	O	0	0
			43	43		
6	B	28	Total	O	0	0
			28	28		
6	C	39	Total	O	0	0
			39	39		
6	D	26	Total	O	0	0
			26	26		
6	E	38	Total	O	0	0
			38	38		

Continued on next page...

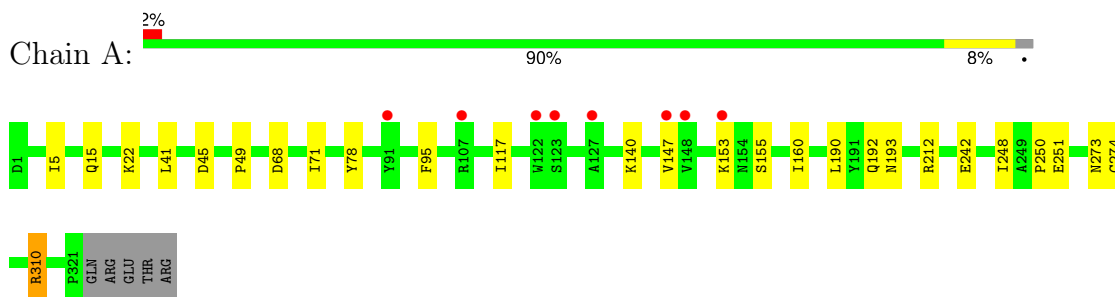
Continued from previous page...

Mol	Chain	Residues	Atoms		ZeroOcc	AltConf
6	F	22	Total	O	0	0
			22	22		

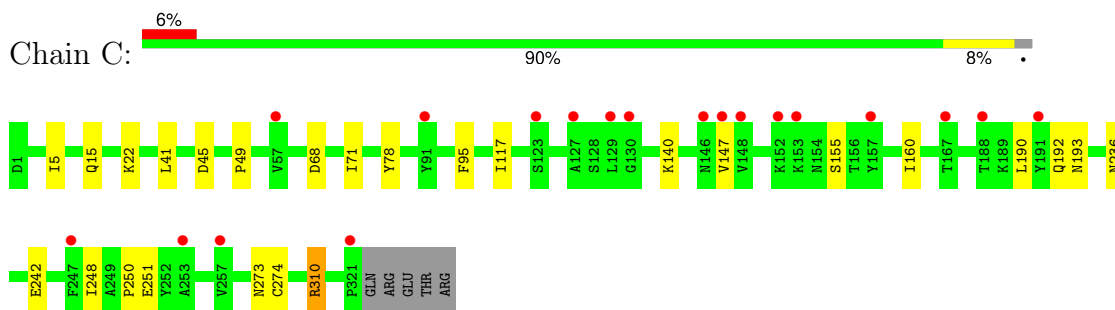
3 Residue-property plots [i](#)

These plots are drawn for all protein, RNA, DNA and oligosaccharide chains in the entry. The first graphic for a chain summarises the proportions of the various outlier classes displayed in the second graphic. The second graphic shows the sequence view annotated by issues in geometry and electron density. Residues are color-coded according to the number of geometric quality criteria for which they contain at least one outlier: green = 0, yellow = 1, orange = 2 and red = 3 or more. A red dot above a residue indicates a poor fit to the electron density ($RSRZ > 2$). Stretches of 2 or more consecutive residues without any outlier are shown as a green connector. Residues present in the sample, but not in the model, are shown in grey.

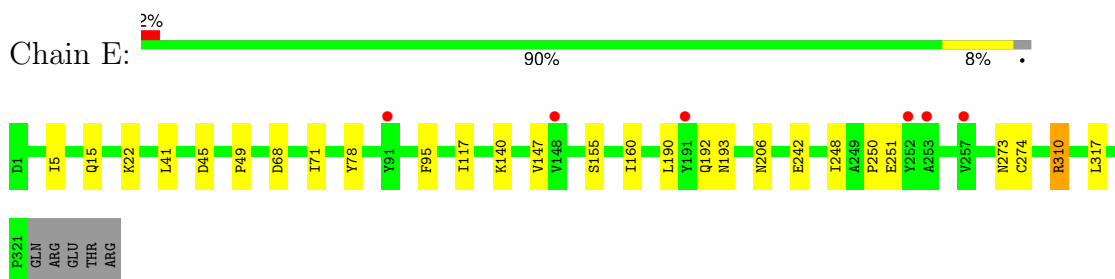
- Molecule 1: HAEMAGGLUTININ



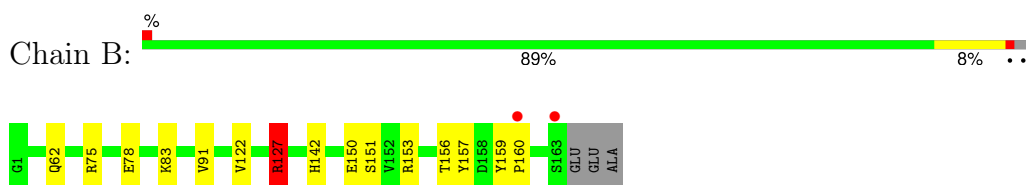
- Molecule 1: HAEMAGGLUTININ




- Molecule 1: HAEMAGGLUTININ



- Molecule 2: HAEMAGGLUTININ




- Molecule 2: HAEMAGGLUTININ

Chain D:  90% 8% ..

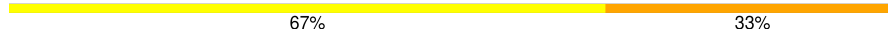


- Molecule 2: HAEMAGGLUTININ

Chain F:  89% 8% ..

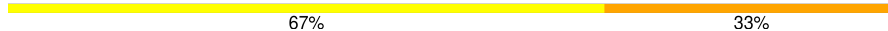


- Molecule 3: N-acetyl-alpha-neuraminic acid-(2-3)-alpha-D-galactopyranose-(1-4)-2-acetamido-2-deoxy-6-O-sulfo-beta-D-glucopyranose

Chain G:  67% 33%

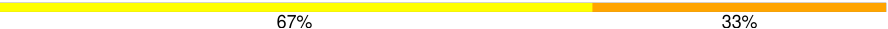


- Molecule 3: N-acetyl-alpha-neuraminic acid-(2-3)-alpha-D-galactopyranose-(1-4)-2-acetamido-2-deoxy-6-O-sulfo-beta-D-glucopyranose

Chain H:  67% 33%



- Molecule 3: N-acetyl-alpha-neuraminic acid-(2-3)-alpha-D-galactopyranose-(1-4)-2-acetamido-2-deoxy-6-O-sulfo-beta-D-glucopyranose

Chain I:  67% 33%



4 Data and refinement statistics i

Property	Value	Source
Space group	C 1 2 1	Depositor
Cell constants a, b, c, α , β , γ	175.34Å 101.23Å 160.80Å 90.00° 111.31° 90.00°	Depositor
Resolution (Å)	43.06 – 2.71 43.02 – 2.71	Depositor EDS
% Data completeness (in resolution range)	73.2 (43.06-2.71) 73.3 (43.02-2.71)	Depositor EDS
R_{merge}	0.10	Depositor
R_{sym}	(Not available)	Depositor
$\langle I/\sigma(I) \rangle$ ¹	0.93 (at 2.69Å)	Xtrriage
Refinement program	REFMAC 5.7.0032	Depositor
R, R_{free}	0.222 , 0.237 0.226 , 0.238	Depositor DCC
R_{free} test set	2662 reflections (5.07%)	wwPDB-VP
Wilson B-factor (Å ²)	37.8	Xtrriage
Anisotropy	0.038	Xtrriage
Bulk solvent k_{sol} (e/Å ³), B_{sol} (Å ²)	0.32 , 13.6	EDS
L-test for twinning ²	$\langle L \rangle = 0.50$, $\langle L^2 \rangle = 0.33$	Xtrriage
Estimated twinning fraction	0.448 for $1/2^*h-3/2^*k,-1/2^*h-1/2^*k,-1/2^*h+1/2^*k-1$ 0.448 for $1/2^*h+3/2^*k,1/2^*h-1/2^*k,-1/2^*h-1/2^*k-1$	Xtrriage
F_o, F_c correlation	0.90	EDS
Total number of atoms	12112	wwPDB-VP
Average B, all atoms (Å ²)	53.0	wwPDB-VP

Xtrriage's analysis on translational NCS is as follows: *The largest off-origin peak in the Patterson function is 5.63% of the height of the origin peak. No significant pseudotranslation is detected.*

¹Intensities estimated from amplitudes.

²Theoretical values of $\langle |L| \rangle$, $\langle L^2 \rangle$ for acentric reflections are 0.5, 0.333 respectively for untwinned datasets, and 0.375, 0.2 for perfectly twinned datasets.

5 Model quality [i](#)

5.1 Standard geometry [i](#)

Bond lengths and bond angles in the following residue types are not validated in this section: GLA, NAG, SIA, EPE, NGS

The Z score for a bond length (or angle) is the number of standard deviations the observed value is removed from the expected value. A bond length (or angle) with $|Z| > 5$ is considered an outlier worth inspection. RMSZ is the root-mean-square of all Z scores of the bond lengths (or angles).

Mol	Chain	Bond lengths		Bond angles	
		RMSZ	# Z >5	RMSZ	# Z >5
1	A	0.30	0/2609	0.51	0/3545
1	C	0.30	0/2609	0.51	0/3545
1	E	0.30	0/2609	0.51	0/3545
2	B	0.33	0/1345	0.52	1/1810 (0.1%)
2	D	0.33	0/1345	0.51	1/1810 (0.1%)
2	F	0.33	0/1345	0.51	1/1810 (0.1%)
All	All	0.31	0/11862	0.51	3/16065 (0.0%)

There are no bond length outliers.

All (3) bond angle outliers are listed below:

Mol	Chain	Res	Type	Atoms	Z	Observed(°)	Ideal(°)
2	F	127	ARG	NE-CZ-NH1	5.45	123.03	120.30
2	D	127	ARG	NE-CZ-NH1	5.30	122.95	120.30
2	B	127	ARG	NE-CZ-NH1	5.20	122.90	120.30

There are no chirality outliers.

There are no planarity outliers.

5.2 Too-close contacts [i](#)

In the following table, the Non-H and H(model) columns list the number of non-hydrogen atoms and hydrogen atoms in the chain respectively. The H(added) column lists the number of hydrogen atoms added and optimized by MolProbity. The Clashes column lists the number of clashes within the asymmetric unit, whereas Symm-Clashes lists symmetry-related clashes.

Mol	Chain	Non-H	H(model)	H(added)	Clashes	Symm-Clashes
1	A	2547	0	2490	11	0
1	C	2547	0	2490	11	0

Continued on next page...

Continued from previous page...

Mol	Chain	Non-H	H(model)	H(added)	Clashes	Symm-Clashes
1	E	2547	0	2490	12	0
2	B	1318	0	1223	9	0
2	D	1318	0	1223	8	0
2	F	1318	0	1223	10	0
3	G	50	0	35	1	0
3	H	50	0	35	1	0
3	I	50	0	35	1	0
4	A	28	0	26	1	0
4	B	14	0	13	0	0
4	C	28	0	26	2	0
4	D	14	0	13	0	0
4	E	28	0	26	1	0
4	F	14	0	13	0	0
5	B	15	0	18	0	0
5	D	15	0	18	0	0
5	F	15	0	18	0	0
6	A	43	0	0	0	0
6	B	28	0	0	0	0
6	C	39	0	0	0	0
6	D	26	0	0	0	0
6	E	38	0	0	0	0
6	F	22	0	0	1	0
All	All	12112	0	11415	56	0

The all-atom clashscore is defined as the number of clashes found per 1000 atoms (including hydrogen atoms). The all-atom clashscore for this structure is 2.

All (56) close contacts within the same asymmetric unit are listed below, sorted by their clash magnitude.

Atom-1	Atom-2	Interatomic distance (Å)	Clash overlap (Å)
1:A:212:ARG:NH1	1:E:206:ASN:O	2.17	0.77
1:C:22:LYS:HE2	4:C:1023:NAG:H82	1.72	0.70
1:A:22:LYS:HE2	4:A:1023:NAG:H82	1.72	0.70
1:E:5:ILE:HD11	2:F:122:VAL:HG21	1.77	0.65
1:E:22:LYS:HE2	4:E:1023:NAG:H82	1.79	0.65
1:A:5:ILE:HD11	2:B:122:VAL:HG21	1.79	0.63
1:C:5:ILE:HD11	2:D:122:VAL:HG21	1.80	0.62
2:B:127:ARG:HH11	2:B:127:ARG:HG2	1.65	0.62
2:F:127:ARG:HH11	2:F:127:ARG:HG2	1.65	0.62
2:F:156:THR:O	2:F:156:THR:HG22	2.00	0.61
2:D:127:ARG:HG2	2:D:127:ARG:HH11	1.65	0.61

Continued on next page...

Continued from previous page...

Atom-1	Atom-2	Interatomic distance (Å)	Clash overlap (Å)
2:D:156:THR:HG22	2:D:156:THR:O	2.00	0.61
2:B:156:THR:O	2:B:156:THR:HG22	2.00	0.60
1:A:117:ILE:HB	1:A:250:PRO:O	2.04	0.58
1:C:117:ILE:HB	1:C:250:PRO:O	2.04	0.57
2:B:151:SER:OG	2:B:157:TYR:HA	2.05	0.57
2:F:151:SER:OG	2:F:157:TYR:HA	2.05	0.56
2:D:151:SER:OG	2:D:157:TYR:HA	2.05	0.56
1:E:117:ILE:HB	1:E:250:PRO:O	2.04	0.56
2:B:75:ARG:NH1	2:B:78:GLU:OE1	2.40	0.55
2:D:75:ARG:NH1	2:D:78:GLU:OE1	2.39	0.55
2:F:75:ARG:NH1	2:F:78:GLU:OE1	2.39	0.55
2:B:150:GLU:OE1	2:B:153:ARG:NH1	2.44	0.51
2:F:142:HIS:HE2	2:F:157:TYR:HH	1.58	0.51
2:F:150:GLU:OE1	2:F:153:ARG:NH1	2.43	0.50
2:D:150:GLU:OE1	2:D:153:ARG:NH1	2.43	0.50
2:B:159:TYR:HB3	2:B:160:PRO:HD3	1.96	0.47
2:F:159:TYR:HB3	2:F:160:PRO:HD3	1.96	0.47
1:A:147:VAL:HB	1:A:248:ILE:HG22	1.97	0.46
1:A:68:ASP:O	1:A:71:ILE:HG22	2.16	0.46
1:C:147:VAL:HB	1:C:248:ILE:HG22	1.98	0.46
1:C:160:ILE:O	1:C:242:GLU:HA	2.16	0.45
1:E:68:ASP:O	1:E:71:ILE:HG22	2.16	0.45
2:D:159:TYR:HB3	2:D:160:PRO:HD3	1.96	0.45
1:A:160:ILE:O	1:A:242:GLU:HA	2.16	0.45
1:E:147:VAL:HB	1:E:248:ILE:HG22	1.97	0.45
1:E:160:ILE:O	1:E:242:GLU:HA	2.16	0.45
1:C:68:ASP:O	1:C:71:ILE:HG22	2.16	0.45
1:A:15:GLN:O	1:A:310:ARG:NH2	2.50	0.45
1:C:190:LEU:HD21	3:H:3:SIA:O10	2.18	0.44
1:C:15:GLN:O	1:C:310:ARG:NH2	2.50	0.44
1:C:155:SER:HB3	1:C:192:GLN:OE1	2.18	0.43
1:E:15:GLN:O	1:E:310:ARG:NH2	2.50	0.43
2:B:91:VAL:HG13	6:F:2019:HOH:O	2.19	0.43
1:E:155:SER:HB3	1:E:192:GLN:OE1	2.19	0.43
1:A:155:SER:HB3	1:A:192:GLN:OE1	2.19	0.42
1:E:190:LEU:HD21	3:I:3:SIA:O10	2.19	0.42
2:B:142:HIS:HE2	2:B:157:TYR:HH	1.61	0.42
1:E:317:LEU:HB3	2:F:111:HIS:CG	2.55	0.42
1:A:190:LEU:HD21	3:G:3:SIA:O10	2.20	0.41
1:C:236:ASN:OD1	4:C:1165:NAG:H2	2.20	0.41
1:E:49:PRO:HB3	1:E:78:TYR:CZ	2.56	0.41

Continued on next page...

Continued from previous page...

Atom-1	Atom-2	Interatomic distance (Å)	Clash overlap (Å)
2:D:142:HIS:NE2	2:D:157:TYR:OH	2.49	0.40
2:F:156:THR:O	2:F:156:THR:CG2	2.69	0.40
1:A:49:PRO:HB3	1:A:78:TYR:CZ	2.56	0.40
1:C:49:PRO:HB3	1:C:78:TYR:CZ	2.56	0.40

There are no symmetry-related clashes.

5.3 Torsion angles [i](#)

5.3.1 Protein backbone [i](#)

In the following table, the Percentiles column shows the percent Ramachandran outliers of the chain as a percentile score with respect to all X-ray entries followed by that with respect to entries of similar resolution.

The Analysed column shows the number of residues for which the backbone conformation was analysed, and the total number of residues.

Mol	Chain	Analysed	Favoured	Allowed	Outliers	Percentiles	
1	A	319/326 (98%)	306 (96%)	13 (4%)	0	100	100
1	C	319/326 (98%)	306 (96%)	13 (4%)	0	100	100
1	E	319/326 (98%)	306 (96%)	13 (4%)	0	100	100
2	B	161/166 (97%)	158 (98%)	3 (2%)	0	100	100
2	D	161/166 (97%)	158 (98%)	3 (2%)	0	100	100
2	F	161/166 (97%)	158 (98%)	3 (2%)	0	100	100
All	All	1440/1476 (98%)	1392 (97%)	48 (3%)	0	100	100

There are no Ramachandran outliers to report.

5.3.2 Protein sidechains [i](#)

In the following table, the Percentiles column shows the percent sidechain outliers of the chain as a percentile score with respect to all X-ray entries followed by that with respect to entries of similar resolution.

The Analysed column shows the number of residues for which the sidechain conformation was analysed, and the total number of residues.

Mol	Chain	Analysed	Rotameric	Outliers	Percentiles	
1	A	289/294 (98%)	279 (96%)	10 (4%)	36	63
1	C	289/294 (98%)	280 (97%)	9 (3%)	40	68
1	E	289/294 (98%)	280 (97%)	9 (3%)	40	68
2	B	139/141 (99%)	136 (98%)	3 (2%)	52	78
2	D	139/141 (99%)	136 (98%)	3 (2%)	52	78
2	F	139/141 (99%)	136 (98%)	3 (2%)	52	78
All	All	1284/1305 (98%)	1247 (97%)	37 (3%)	42	70

All (37) residues with a non-rotameric sidechain are listed below:

Mol	Chain	Res	Type
1	A	41	LEU
1	A	45	ASP
1	A	95	PHE
1	A	140	LYS
1	A	153	LYS
1	A	193	ASN
1	A	251	GLU
1	A	273	ASN
1	A	274	CYS
1	A	310	ARG
2	B	62	GLN
2	B	83	LYS
2	B	127	ARG
1	C	41	LEU
1	C	45	ASP
1	C	95	PHE
1	C	140	LYS
1	C	193	ASN
1	C	251	GLU
1	C	273	ASN
1	C	274	CYS
1	C	310	ARG
2	D	62	GLN
2	D	83	LYS
2	D	127	ARG
1	E	41	LEU
1	E	45	ASP
1	E	95	PHE
1	E	140	LYS
1	E	193	ASN

Continued on next page...

Continued from previous page...

Mol	Chain	Res	Type
1	E	251	GLU
1	E	273	ASN
1	E	274	CYS
1	E	310	ARG
2	F	62	GLN
2	F	83	LYS
2	F	127	ARG

Sometimes sidechains can be flipped to improve hydrogen bonding and reduce clashes. All (7) such sidechains are listed below:

Mol	Chain	Res	Type
2	B	15	GLN
1	C	96	ASN
1	C	154	ASN
2	D	15	GLN
1	E	138	GLN
1	E	154	ASN
2	F	15	GLN

5.3.3 RNA [i](#)

There are no RNA molecules in this entry.

5.4 Non-standard residues in protein, DNA, RNA chains [i](#)

There are no non-standard protein/DNA/RNA residues in this entry.

5.5 Carbohydrates [i](#)

9 monosaccharides are modelled in this entry.

In the following table, the Counts columns list the number of bonds (or angles) for which Mogul statistics could be retrieved, the number of bonds (or angles) that are observed in the model and the number of bonds (or angles) that are defined in the Chemical Component Dictionary. The Link column lists molecule types, if any, to which the group is linked. The Z score for a bond length (or angle) is the number of standard deviations the observed value is removed from the expected value. A bond length (or angle) with $|Z| > 2$ is considered an outlier worth inspection. RMSZ is the root-mean-square of all Z scores of the bond lengths (or angles).

Mol	Type	Chain	Res	Link	Bond lengths			Bond angles		
					Counts	RMSZ	# Z > 2	Counts	RMSZ	# Z > 2
3	NGS	G	1	3	19,19,19	0.57	0	27,28,28	1.27	3 (11%)
3	GLA	G	2	3	11,11,12	0.43	0	15,15,17	1.49	3 (20%)
3	SIA	G	3	3	20,20,21	0.55	0	21,28,31	1.15	2 (9%)
3	NGS	H	1	3	19,19,19	0.58	0	27,28,28	1.27	2 (7%)
3	GLA	H	2	3	11,11,12	0.38	0	15,15,17	1.48	3 (20%)
3	SIA	H	3	3	20,20,21	0.59	0	21,28,31	1.17	2 (9%)
3	NGS	I	1	3	19,19,19	0.57	0	27,28,28	1.37	3 (11%)
3	GLA	I	2	3	11,11,12	0.48	0	15,15,17	1.55	3 (20%)
3	SIA	I	3	3	20,20,21	0.56	0	21,28,31	1.13	2 (9%)

In the following table, the Chirals column lists the number of chiral outliers, the number of chiral centers analysed, the number of these observed in the model and the number defined in the Chemical Component Dictionary. Similar counts are reported in the Torsion and Rings columns. '-' means no outliers of that kind were identified.

Mol	Type	Chain	Res	Link	Chirals	Torsions	Rings
3	NGS	G	1	3	-	3/10/30/30	0/1/1/1
3	GLA	G	2	3	-	2/2/19/22	0/1/1/1
3	SIA	G	3	3	-	0/18/34/38	0/1/1/1
3	NGS	H	1	3	-	0/10/30/30	0/1/1/1
3	GLA	H	2	3	-	2/2/19/22	0/1/1/1
3	SIA	H	3	3	-	1/18/34/38	0/1/1/1
3	NGS	I	1	3	-	2/10/30/30	0/1/1/1
3	GLA	I	2	3	-	2/2/19/22	0/1/1/1
3	SIA	I	3	3	-	2/18/34/38	0/1/1/1

There are no bond length outliers.

All (23) bond angle outliers are listed below:

Mol	Chain	Res	Type	Atoms	Z	Observed(°)	Ideal(°)
3	I	1	NGS	C1-C2-N2	-4.86	105.10	110.73
3	I	2	GLA	C1-C2-C3	4.30	115.90	109.64
3	G	2	GLA	C1-C2-C3	3.89	115.31	109.64
3	H	2	GLA	C1-C2-C3	3.73	115.07	109.64
3	G	1	NGS	C1-C2-N2	-3.58	106.58	110.73
3	H	3	SIA	C4-C5-N5	-3.52	103.51	110.44
3	H	1	NGS	C1-C2-N2	-3.41	106.77	110.73
3	G	3	SIA	C4-C5-N5	-3.33	103.88	110.44

Continued on next page...

Continued from previous page...

Mol	Chain	Res	Type	Atoms	Z	Observed(°)	Ideal(°)
3	I	3	SIA	C4-C5-N5	-3.12	104.29	110.44
3	H	1	NGS	C3-C2-N2	-2.83	105.41	110.62
3	G	1	NGS	O6-C6-C5	2.80	112.57	107.57
3	G	2	GLA	O3-C3-C2	-2.38	105.21	110.05
3	G	3	SIA	O1B-C1-C2	2.30	118.70	112.71
3	H	2	GLA	O3-C3-C2	-2.29	105.38	110.05
3	I	3	SIA	O1B-C1-C2	2.29	118.67	112.71
3	I	1	NGS	O6-C6-C5	2.28	111.63	107.57
3	H	3	SIA	O1B-C1-C2	2.27	118.63	112.71
3	I	2	GLA	O3-C3-C2	-2.21	105.54	110.05
3	I	1	NGS	O4-C4-C3	2.17	115.49	110.38
3	I	2	GLA	O5-C5-C6	2.10	111.75	107.66
3	G	2	GLA	O5-C5-C6	2.09	111.72	107.66
3	H	2	GLA	C1-O5-C5	2.09	114.98	112.19
3	G	1	NGS	O4-C4-C3	2.04	115.19	110.38

There are no chirality outliers.

All (14) torsion outliers are listed below:

Mol	Chain	Res	Type	Atoms
3	H	2	GLA	O5-C5-C6-O6
3	G	2	GLA	O5-C5-C6-O6
3	I	2	GLA	O5-C5-C6-O6
3	G	2	GLA	C4-C5-C6-O6
3	H	2	GLA	C4-C5-C6-O6
3	I	2	GLA	C4-C5-C6-O6
3	G	1	NGS	C6-O6-S-O8
3	I	1	NGS	C6-O6-S-O8
3	I	3	SIA	C6-C7-C8-O8
3	G	1	NGS	O5-C5-C6-O6
3	G	1	NGS	C4-C5-C6-O6
3	I	1	NGS	C4-C5-C6-O6
3	I	3	SIA	O7-C7-C8-C9
3	H	3	SIA	C6-C7-C8-O8

There are no ring outliers.

3 monomers are involved in 3 short contacts:

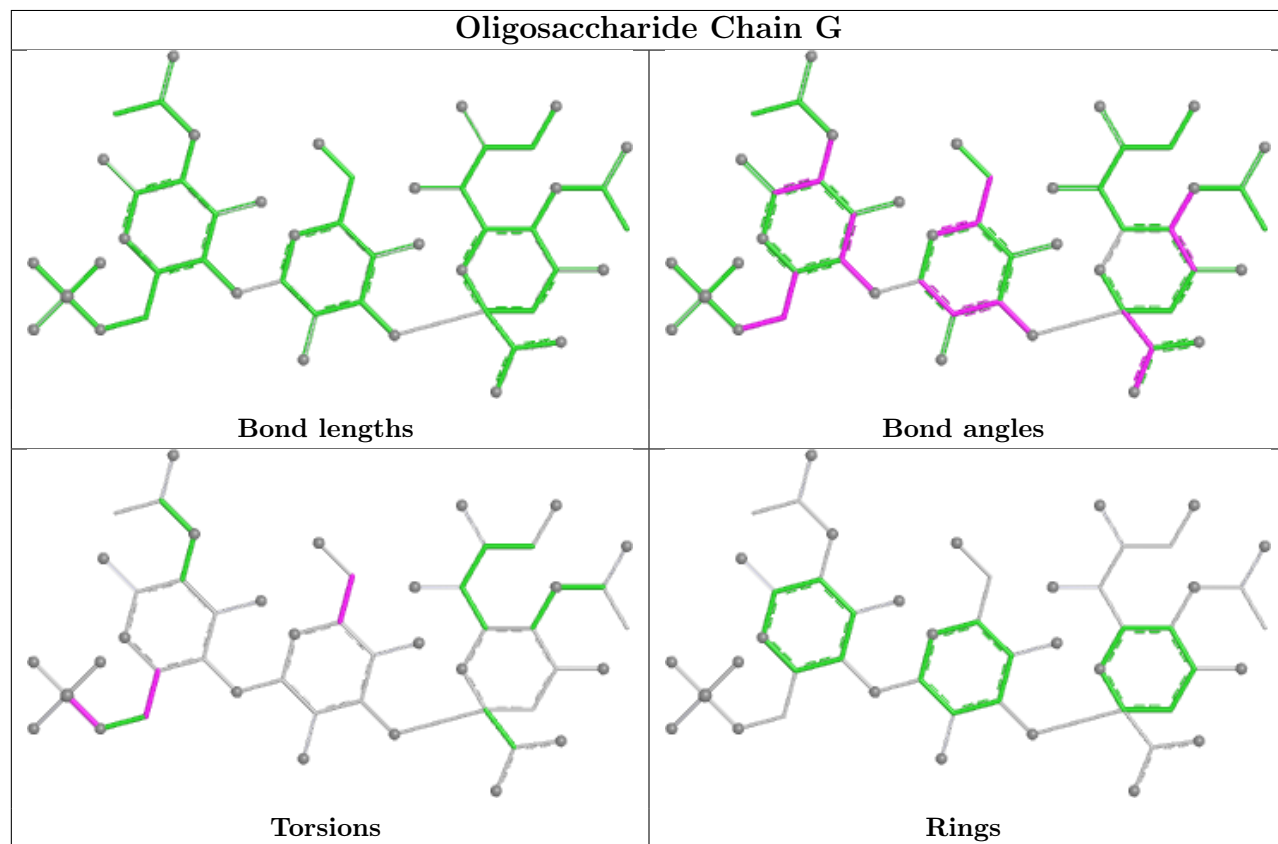
Mol	Chain	Res	Type	Clashes	Symm-Clashes
3	H	3	SIA	1	0
3	I	3	SIA	1	0

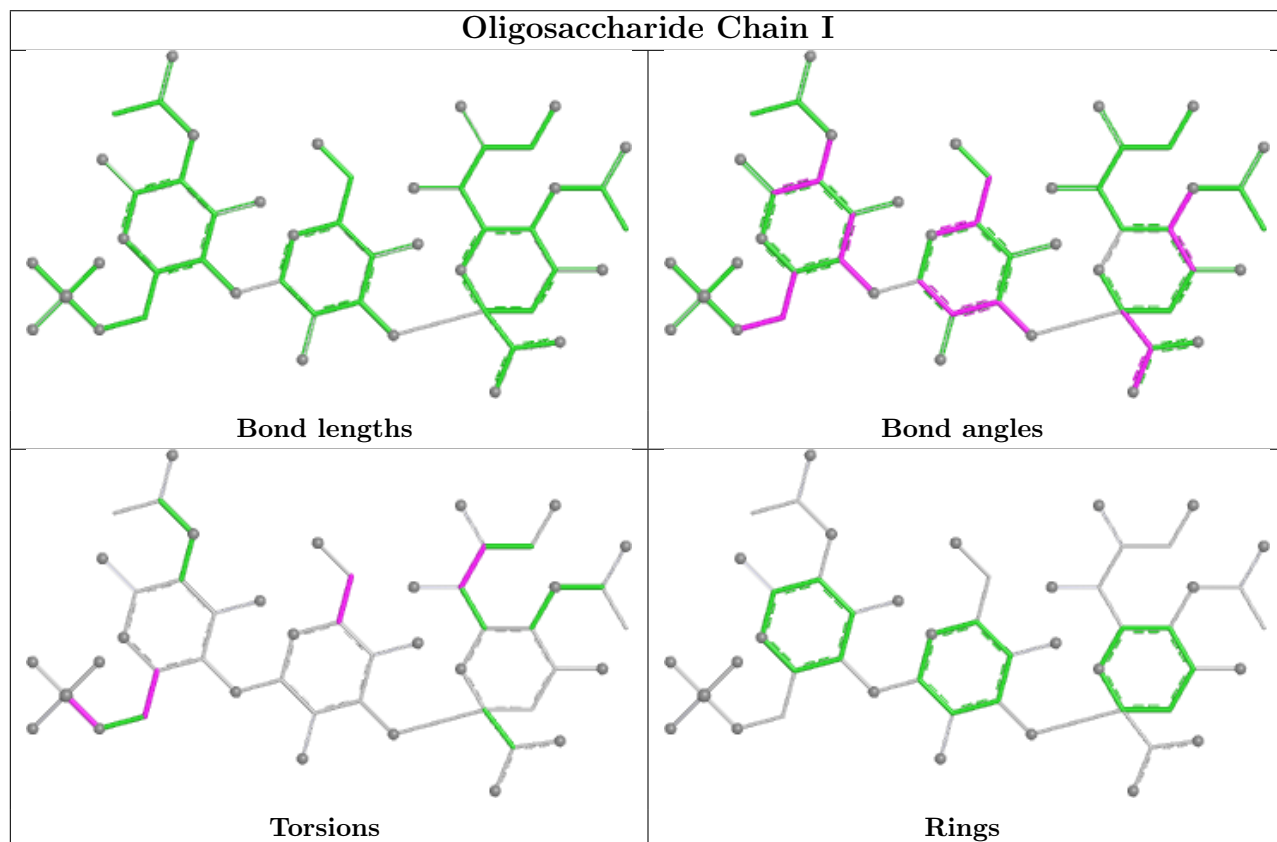
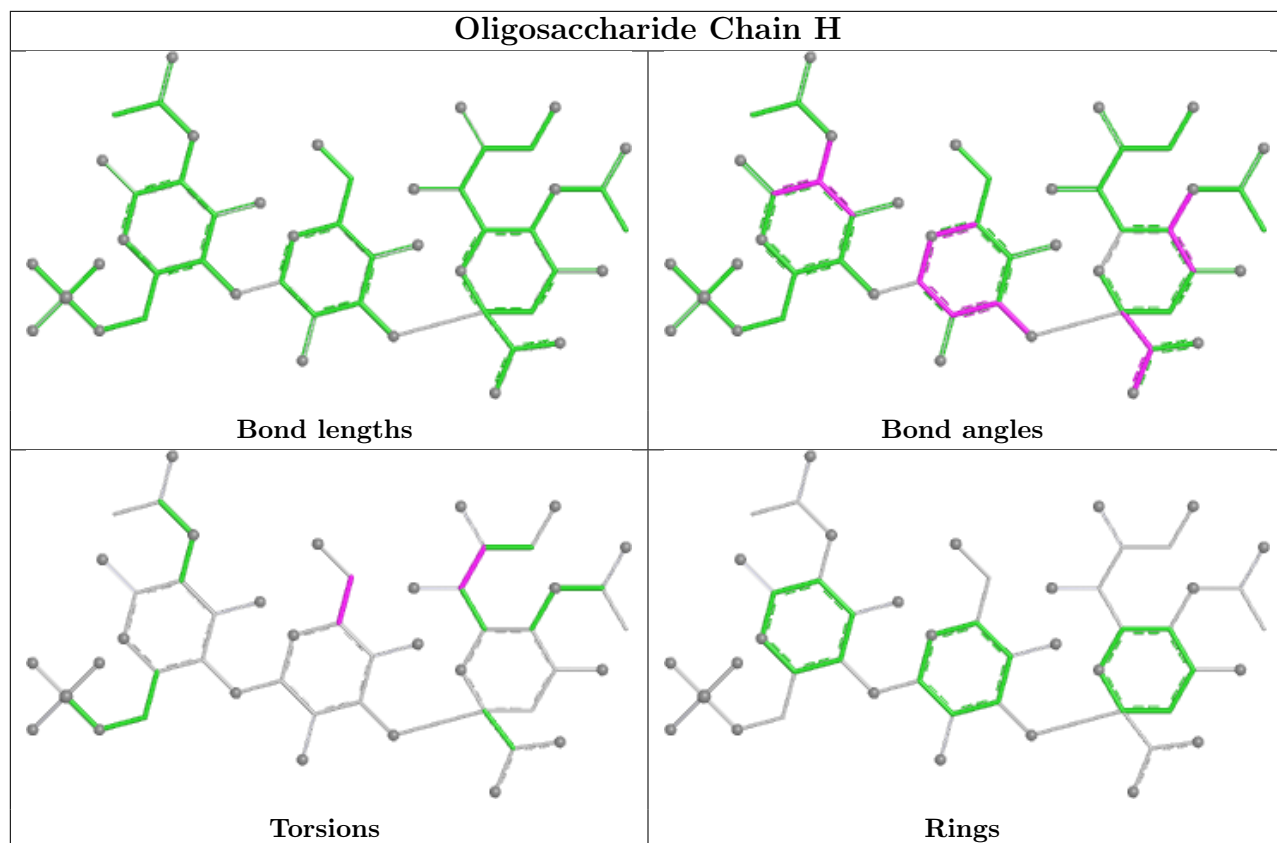
Continued on next page...

Continued from previous page...

Mol	Chain	Res	Type	Clashes	Symm-Clashes
3	G	3	SIA	1	0

The following is a two-dimensional graphical depiction of Mogul quality analysis of bond lengths, bond angles, torsion angles, and ring geometry for oligosaccharide.





5.6 Ligand geometry

12 ligands are modelled in this entry.

In the following table, the Counts columns list the number of bonds (or angles) for which Mogul statistics could be retrieved, the number of bonds (or angles) that are observed in the model and the number of bonds (or angles) that are defined in the Chemical Component Dictionary. The Link column lists molecule types, if any, to which the group is linked. The Z score for a bond length (or angle) is the number of standard deviations the observed value is removed from the expected value. A bond length (or angle) with $|Z| > 2$ is considered an outlier worth inspection. RMSZ is the root-mean-square of all Z scores of the bond lengths (or angles).

Mol	Type	Chain	Res	Link	Bond lengths			Bond angles		
					Counts	RMSZ	# Z > 2	Counts	RMSZ	# Z > 2
5	EPE	D	1164	-	15,15,15	2.28	1 (6%)	19,20,20	2.61	7 (36%)
5	EPE	B	1164	-	15,15,15	1.96	1 (6%)	19,20,20	2.82	10 (52%)
4	NAG	C	1023	1	14,14,15	0.56	0	17,19,21	1.06	1 (5%)
4	NAG	F	1154	2	14,14,15	0.44	0	17,19,21	1.53	1 (5%)
4	NAG	D	1154	2	14,14,15	0.56	0	17,19,21	1.24	1 (5%)
4	NAG	A	1165	1	14,14,15	0.75	0	17,19,21	1.38	2 (11%)
4	NAG	E	1165	1	14,14,15	0.77	0	17,19,21	1.43	2 (11%)
4	NAG	A	1023	1	14,14,15	0.51	0	17,19,21	1.07	1 (5%)
4	NAG	E	1023	1	14,14,15	0.50	0	17,19,21	1.10	1 (5%)
5	EPE	F	1164	-	15,15,15	2.15	1 (6%)	19,20,20	2.77	8 (42%)
4	NAG	B	1154	2	14,14,15	0.57	0	17,19,21	1.15	1 (5%)
4	NAG	C	1165	1	14,14,15	0.69	0	17,19,21	1.33	1 (5%)

In the following table, the Chirals column lists the number of chiral outliers, the number of chiral centers analysed, the number of these observed in the model and the number defined in the Chemical Component Dictionary. Similar counts are reported in the Torsion and Rings columns. '-' means no outliers of that kind were identified.

Mol	Type	Chain	Res	Link	Chirals	Torsions	Rings
5	EPE	D	1164	-	-	6/9/19/19	0/1/1/1
5	EPE	B	1164	-	-	5/9/19/19	0/1/1/1
4	NAG	F	1154	2	1/1/5/7	0/6/23/26	0/1/1/1
4	NAG	C	1023	1	-	2/6/23/26	0/1/1/1
4	NAG	D	1154	2	1/1/5/7	0/6/23/26	0/1/1/1
4	NAG	A	1165	1	1/1/5/7	1/6/23/26	0/1/1/1
4	NAG	E	1165	1	-	1/6/23/26	0/1/1/1
4	NAG	A	1023	1	-	0/6/23/26	0/1/1/1
4	NAG	E	1023	1	-	3/6/23/26	0/1/1/1

Continued on next page...

Continued from previous page...

Mol	Type	Chain	Res	Link	Chirals	Torsions	Rings
5	EPE	F	1164	-	-	4/9/19/19	0/1/1/1
4	NAG	B	1154	2	1/1/5/7	2/6/23/26	0/1/1/1
4	NAG	C	1165	1	-	1/6/23/26	0/1/1/1

All (3) bond length outliers are listed below:

Mol	Chain	Res	Type	Atoms	Z	Observed(Å)	Ideal(Å)
5	D	1164	EPE	C10-S	-8.50	1.65	1.77
5	F	1164	EPE	C10-S	-7.95	1.66	1.77
5	B	1164	EPE	C10-S	-7.19	1.67	1.77

All (36) bond angle outliers are listed below:

Mol	Chain	Res	Type	Atoms	Z	Observed(°)	Ideal(°)
5	F	1164	EPE	C5-N4-C3	6.70	123.28	108.84
5	D	1164	EPE	C5-N4-C3	5.58	120.85	108.84
5	B	1164	EPE	C6-N1-C2	5.29	120.24	108.84
5	D	1164	EPE	C6-N1-C2	5.12	119.88	108.84
4	F	1154	NAG	C1-O5-C5	5.02	118.91	112.19
5	F	1164	EPE	C6-N1-C2	4.49	118.50	108.84
5	D	1164	EPE	C9-N1-C2	4.38	122.92	111.24
5	F	1164	EPE	C5-C6-N1	-4.30	101.99	110.65
5	B	1164	EPE	C9-N1-C6	4.12	122.23	111.24
5	B	1164	EPE	C7-N4-C3	4.05	122.02	111.24
5	F	1164	EPE	C9-N1-C2	3.98	121.85	111.24
5	B	1164	EPE	C5-N4-C3	3.87	117.18	108.84
5	B	1164	EPE	C2-C3-N4	-3.77	103.05	110.65
5	B	1164	EPE	C3-C2-N1	-3.72	103.15	110.65
4	D	1154	NAG	C1-O5-C5	3.64	117.06	112.19
5	B	1164	EPE	C7-N4-C5	3.59	120.79	111.24
5	D	1164	EPE	C7-N4-C3	3.45	120.43	111.24
5	B	1164	EPE	O1S-S-C10	3.44	111.92	106.73
4	A	1165	NAG	C2-N2-C7	3.30	127.32	122.90
4	B	1154	NAG	C1-O5-C5	3.17	116.44	112.19
5	F	1164	EPE	C9-N1-C6	3.15	119.64	111.24
4	E	1165	NAG	C2-N2-C7	3.15	127.12	122.90
4	A	1023	NAG	C1-O5-C5	3.06	116.29	112.19
5	F	1164	EPE	O3S-S-C10	2.94	111.76	106.00
5	F	1164	EPE	C7-N4-C5	2.89	118.94	111.24
5	D	1164	EPE	C7-N4-C5	2.81	118.72	111.24
5	D	1164	EPE	C5-C6-N1	-2.79	105.02	110.65
4	C	1165	NAG	C2-N2-C7	2.78	126.63	122.90

Continued on next page...

Continued from previous page...

Mol	Chain	Res	Type	Atoms	Z	Observed(°)	Ideal(°)
4	C	1023	NAG	C1-O5-C5	2.55	115.60	112.19
5	F	1164	EPE	C7-N4-C3	2.46	117.78	111.24
5	B	1164	EPE	C9-N1-C2	2.36	117.52	111.24
4	E	1023	NAG	O5-C5-C6	2.34	112.22	107.66
5	B	1164	EPE	O3S-S-C10	2.27	110.44	106.00
5	D	1164	EPE	C9-N1-C6	2.24	117.21	111.24
4	E	1165	NAG	O3-C3-C2	2.22	114.02	109.40
4	A	1165	NAG	O5-C5-C4	-2.08	105.76	110.83

All (4) chirality outliers are listed below:

Mol	Chain	Res	Type	Atom
4	A	1165	NAG	C1
4	B	1154	NAG	C1
4	D	1154	NAG	C1
4	F	1154	NAG	C1

All (25) torsion outliers are listed below:

Mol	Chain	Res	Type	Atoms
5	B	1164	EPE	C9-C10-S-O2S
5	B	1164	EPE	C9-C10-S-O3S
5	D	1164	EPE	C10-C9-N1-C2
5	D	1164	EPE	N4-C7-C8-O8
5	F	1164	EPE	C10-C9-N1-C6
4	E	1023	NAG	O5-C5-C6-O6
5	B	1164	EPE	C8-C7-N4-C3
4	E	1023	NAG	C4-C5-C6-O6
4	B	1154	NAG	O5-C5-C6-O6
5	D	1164	EPE	C9-C10-S-O3S
4	B	1154	NAG	C4-C5-C6-O6
5	F	1164	EPE	N4-C7-C8-O8
4	A	1165	NAG	C3-C2-N2-C7
4	C	1165	NAG	C3-C2-N2-C7
4	E	1165	NAG	C3-C2-N2-C7
5	B	1164	EPE	C10-C9-N1-C6
5	F	1164	EPE	C8-C7-N4-C3
5	B	1164	EPE	C9-C10-S-O1S
5	D	1164	EPE	C9-C10-S-O1S
5	D	1164	EPE	C9-C10-S-O2S
5	F	1164	EPE	S-C10-C9-N1
4	C	1023	NAG	C4-C5-C6-O6

Continued on next page...

Continued from previous page...

Mol	Chain	Res	Type	Atoms
4	C	1023	NAG	O5-C5-C6-O6
5	D	1164	EPE	C8-C7-N4-C3
4	E	1023	NAG	C1-C2-N2-C7

There are no ring outliers.

4 monomers are involved in 4 short contacts:

Mol	Chain	Res	Type	Clashes	Symm-Clashes
4	C	1023	NAG	1	0
4	A	1023	NAG	1	0
4	E	1023	NAG	1	0
4	C	1165	NAG	1	0

5.7 Other polymers [i](#)

There are no such residues in this entry.

5.8 Polymer linkage issues [i](#)

There are no chain breaks in this entry.

6 Fit of model and data

6.1 Protein, DNA and RNA chains

In the following table, the column labelled ‘#RSRZ > 2’ contains the number (and percentage) of RSRZ outliers, followed by percent RSRZ outliers for the chain as percentile scores relative to all X-ray entries and entries of similar resolution. The OWAB column contains the minimum, median, 95th percentile and maximum values of the occupancy-weighted average B-factor per residue. The column labelled ‘Q < 0.9’ lists the number of (and percentage) of residues with an average occupancy less than 0.9.

Mol	Chain	Analysed	<RSRZ>	#RSRZ>2	OWAB(Å ²)	Q<0.9
1	A	321/326 (98%)	0.30	8 (2%) 57 59	22, 64, 88, 109	0
1	C	321/326 (98%)	0.37	19 (5%) 22 21	20, 64, 90, 109	0
1	E	321/326 (98%)	0.33	6 (1%) 66 69	21, 63, 87, 108	0
2	B	163/166 (98%)	0.23	2 (1%) 79 80	12, 35, 65, 93	0
2	D	163/166 (98%)	0.19	1 (0%) 89 90	12, 35, 63, 92	0
2	F	163/166 (98%)	0.24	1 (0%) 89 90	12, 38, 65, 89	0
All	All	1452/1476 (98%)	0.29	37 (2%) 57 59	12, 55, 87, 109	0

All (37) RSRZ outliers are listed below:

Mol	Chain	Res	Type	RSRZ
1	A	91	TYR	4.9
1	C	253	ALA	3.6
1	A	127	ALA	3.6
1	E	191	TYR	3.5
1	C	129	LEU	3.5
1	C	153	LYS	3.4
1	C	167	THR	3.4
2	F	160	PRO	3.4
1	A	123	SER	3.2
2	B	163	SER	3.0
2	B	160	PRO	3.0
1	C	127	ALA	2.9
1	C	152	LYS	2.9
1	C	148	VAL	2.9
1	A	122	TRP	2.8
1	A	153	LYS	2.8
1	A	107	ARG	2.8
1	C	191	TYR	2.7
2	D	160	PRO	2.6

Continued on next page...

Continued from previous page...

Mol	Chain	Res	Type	RSRZ
1	A	147	VAL	2.5
1	C	123	SER	2.5
1	A	148	VAL	2.5
1	C	130	GLY	2.5
1	C	157	TYR	2.4
1	C	247	PHE	2.4
1	E	253	ALA	2.3
1	E	148	VAL	2.3
1	C	91	TYR	2.3
1	C	57	VAL	2.3
1	C	257	VAL	2.1
1	E	257	VAL	2.1
1	C	188	THR	2.1
1	C	147	VAL	2.1
1	E	91	TYR	2.1
1	E	252	TYR	2.1
1	C	146	ASN	2.0
1	C	321	PRO	2.0

6.2 Non-standard residues in protein, DNA, RNA chains [i](#)

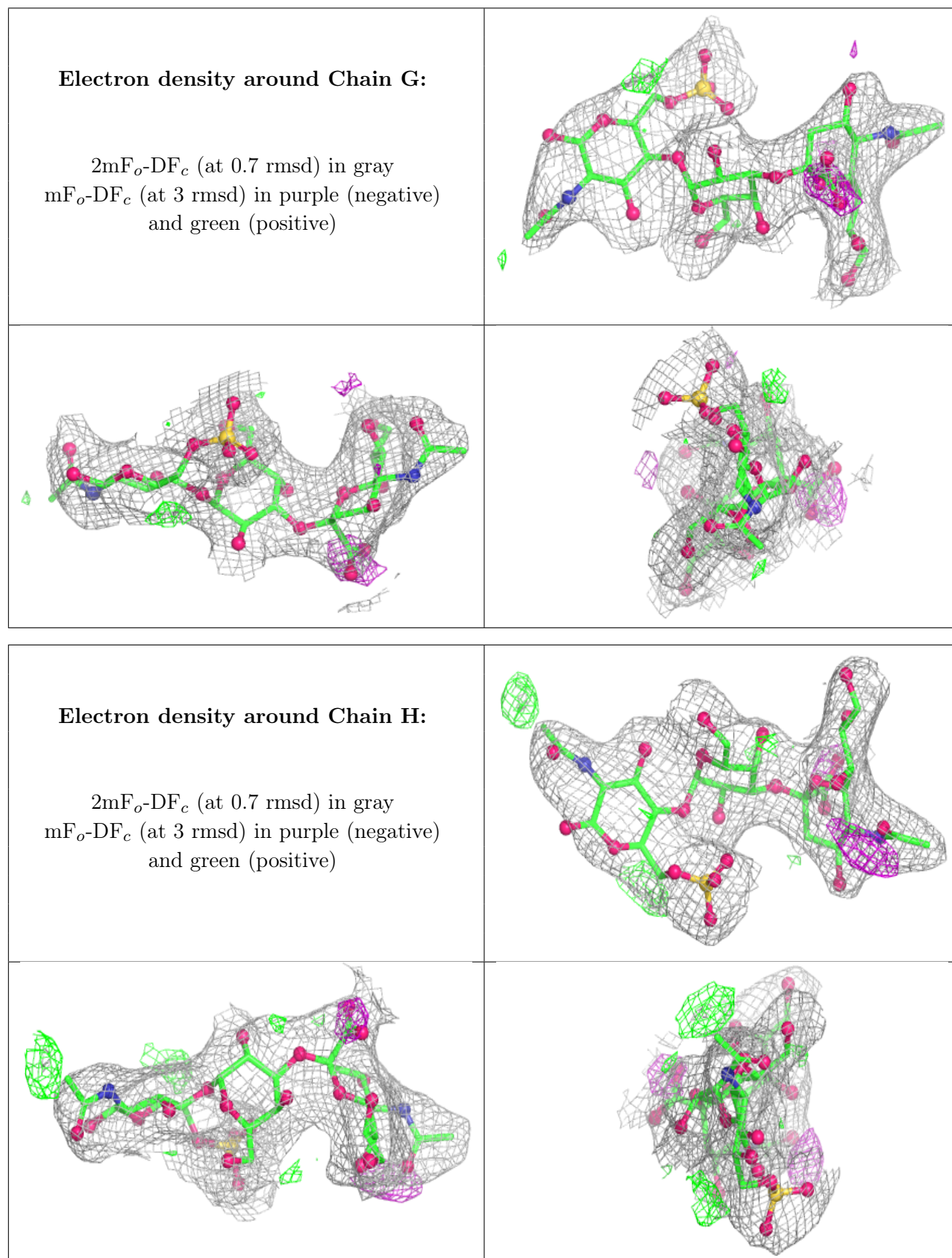
There are no non-standard protein/DNA/RNA residues in this entry.

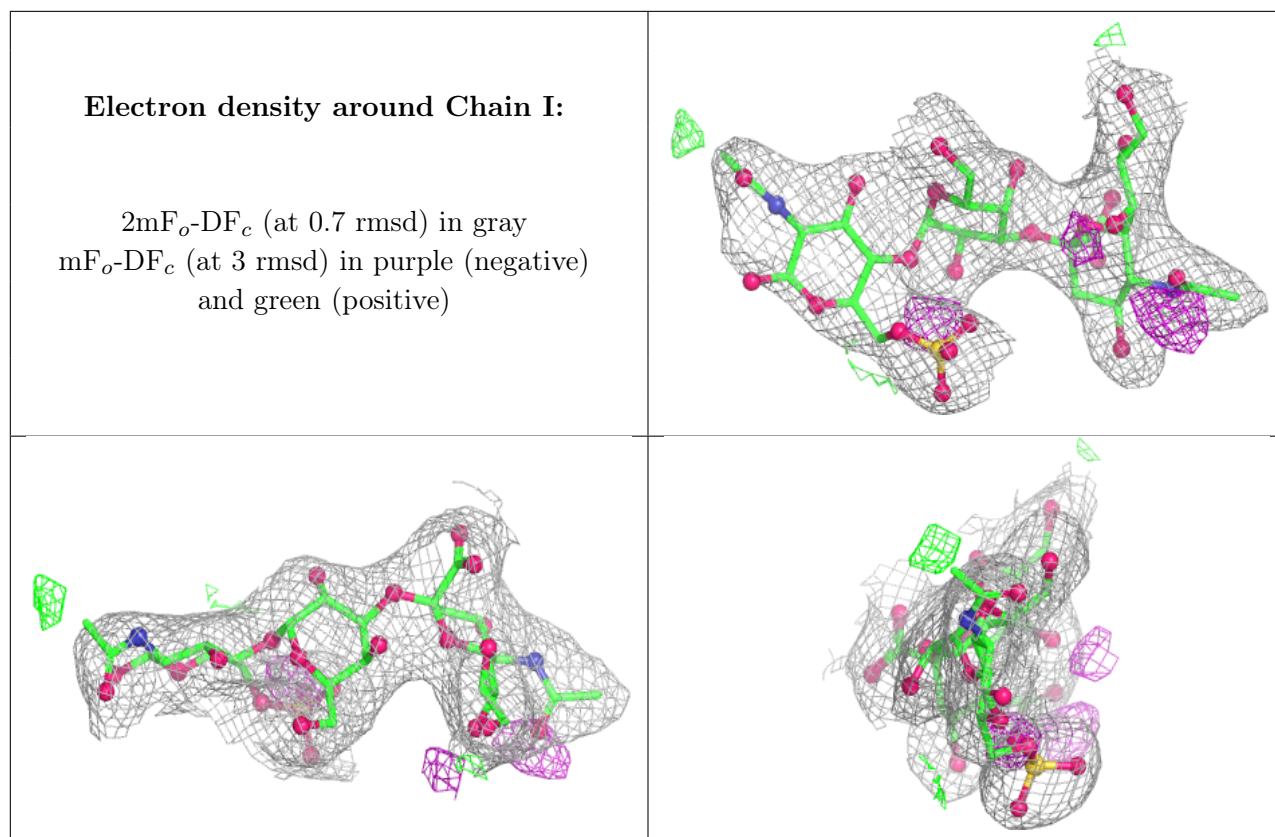
6.3 Carbohydrates [i](#)

In the following table, the Atoms column lists the number of modelled atoms in the group and the number defined in the chemical component dictionary. The B-factors column lists the minimum, median, 95th percentile and maximum values of B factors of atoms in the group. The column labelled 'Q< 0.9' lists the number of atoms with occupancy less than 0.9.

Mol	Type	Chain	Res	Atoms	RSCC	RSR	B-factors(Å ²)	Q<0.9
3	NGS	I	1	19/19	0.86	0.19	76,84,98,99	0
3	GLA	G	2	11/12	0.87	0.12	61,67,71,73	0
3	NGS	G	1	19/19	0.87	0.15	78,84,96,96	0
3	GLA	H	2	11/12	0.89	0.12	60,67,70,72	0
3	GLA	I	2	11/12	0.89	0.15	57,64,68,70	0
3	NGS	H	1	19/19	0.90	0.14	77,83,92,94	0
3	SIA	G	3	20/21	0.91	0.23	53,55,65,66	0
3	SIA	H	3	20/21	0.92	0.20	50,53,63,65	0
3	SIA	I	3	20/21	0.92	0.17	48,52,58,59	0

The following is a graphical depiction of the model fit to experimental electron density for oligosaccharide. Each fit is shown from different orientation to approximate a three-dimensional view.





6.4 Ligands [i](#)

In the following table, the Atoms column lists the number of modelled atoms in the group and the number defined in the chemical component dictionary. The B-factors column lists the minimum, median, 95th percentile and maximum values of B factors of atoms in the group. The column labelled 'Q< 0.9' lists the number of atoms with occupancy less than 0.9.

Mol	Type	Chain	Res	Atoms	RSCC	RSR	B-factors(\AA^2)	Q<0.9
5	EPE	D	1164	15/15	0.82	0.33	63,67,82,83	0
4	NAG	F	1154	14/15	0.83	0.21	44,48,52,52	0
4	NAG	B	1154	14/15	0.85	0.23	44,51,53,54	0
4	NAG	E	1165	14/15	0.85	0.17	35,39,47,50	0
4	NAG	C	1165	14/15	0.86	0.19	38,43,51,54	0
4	NAG	D	1154	14/15	0.89	0.17	40,45,47,48	0
5	EPE	B	1164	15/15	0.89	0.33	55,58,72,74	0
4	NAG	A	1165	14/15	0.89	0.17	34,38,45,46	0
5	EPE	F	1164	15/15	0.89	0.35	58,59,70,72	0
4	NAG	E	1023	14/15	0.92	0.14	37,44,45,46	0
4	NAG	A	1023	14/15	0.93	0.15	34,40,42,44	0
4	NAG	C	1023	14/15	0.94	0.13	35,41,42,43	0

6.5 Other polymers [i](#)

There are no such residues in this entry.